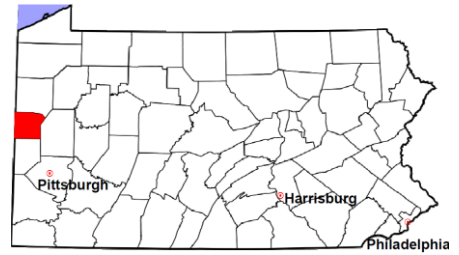


# Lawrence County

2011 Population Estimate: 90,535  
 Class of County: 5th  
 No. of Common Pleas Court Judgeships: 4



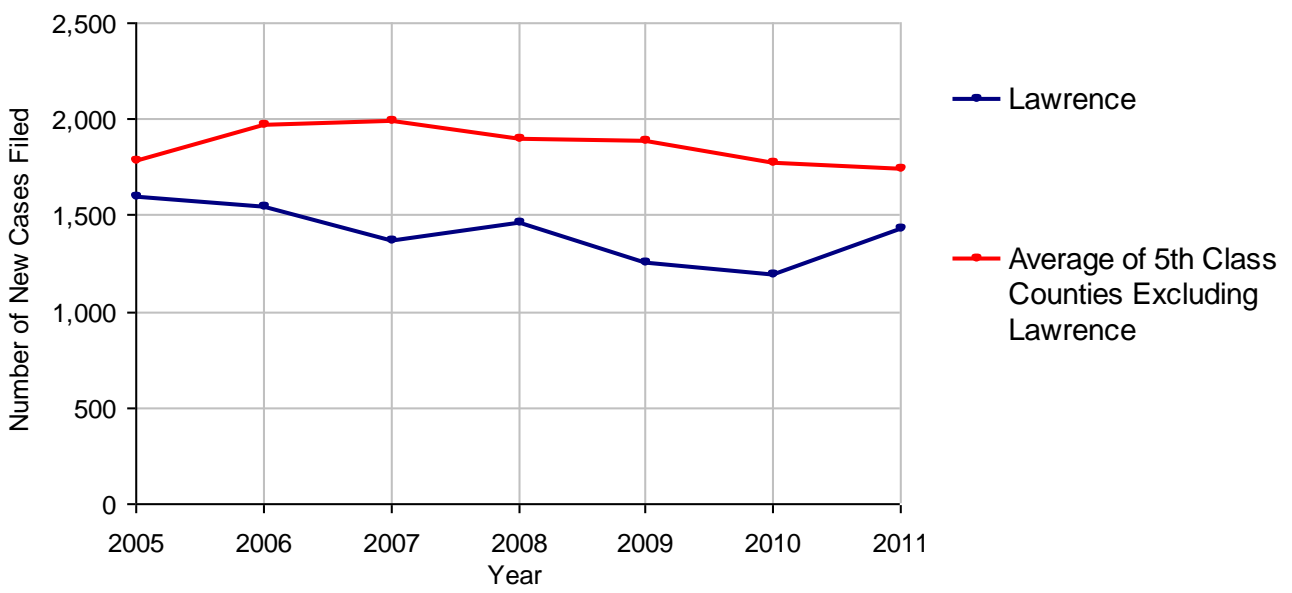
| <b>2011 Criminal</b>                   | <b>No. of Cases</b> |
|--|---------------------|
| Cases Pending 1/1/2011                 | 656                 |
| New Cases Filed in 2011                | 1,444               |
| Reopened Cases                         | 146                 |
| <b>Cases Available for Disposition</b> | <b>2,246</b>        |
| <b>Disposed by:</b>                    |                     |
| Withdrawn/Dismissed                    | 171 11.2%           |
| ARD                                    | 283 18.5%           |
| Guilty Plea                            | 946 61.7%           |
| Non-Jury Trial                         | 4 0.3%              |
| Jury Trial                             | 10 0.7%             |
| Inactive                               | 63 4.1%             |
| Other                                  | 56 3.7%             |
| <b>Total Cases Disposed</b>            | <b>1,533 100.0%</b> |
| <b>Cases Pending 12/31/2011</b>        | <b>713</b>          |
| Cases Awaiting Sentencing              | 244                 |



| <b>Age of Pending Cases as of 12/31/2011</b> |            |               |
|--|------------|---------------|
| 0-60 Days                                    | 201        | 28.2%         |
| 61-120 Days                                  | 213        | 29.9%         |
| 121-180 Days                                 | 135        | 18.9%         |
| 181-240 Days                                 | 48         | 6.7%          |
| 241-300 Days                                 | 39         | 5.5%          |
| 301-360 Days                                 | 18         | 2.5%          |
| Over 360 Days                                | 59         | 8.3%          |
| <b>Total</b>                                 | <b>713</b> | <b>100.0%</b> |

Data provided by CPCMS

**Criminal New Cases Filed, 2005-2011**

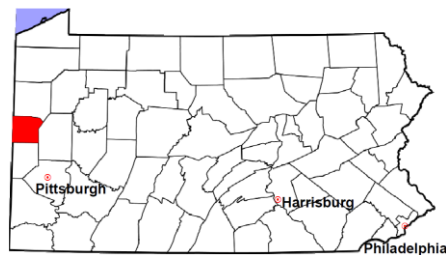


# Lawrence County

2011 Population Estimate: 90,535

Class of County: 5th

No. of Common Pleas Court Judgeships: 4



## 2011 Criminal - New Cases by Case Type

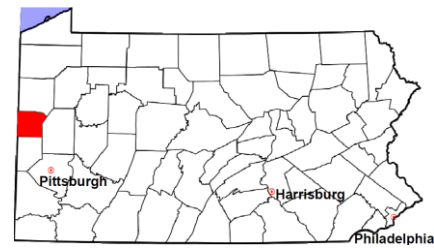


| Case Type               | Felony       | Misdemeanor  | Summary /Ungraded | Total         |
|-------------------------|--------------|--------------|-------------------|---------------|
| Person                  | 137          | 79           | 0                 | 216           |
| Property                | 338          | 262          | 4                 | 604           |
| Drug                    | 71           | 46           | 0                 | 117           |
| Weapon                  | 16           | 4            | 0                 | 20            |
| Public Order            | 55           | 72           | 12                | 139           |
| Motor Vehicle - DWI/DUI | 0            | 340          | 0                 | 340           |
| Motor Vehicle - Other   | 1            | 3            | 0                 | 4             |
| Other                   | 3            | 1            | 0                 | 4             |
| <b>Total</b>            | <b>621</b>   | <b>807</b>   | <b>16</b>         | <b>1,444</b>  |
|                         | <b>43.0%</b> | <b>55.9%</b> | <b>1.1%</b>       | <b>100.0%</b> |

Data provided by CPCMS

# Lawrence County

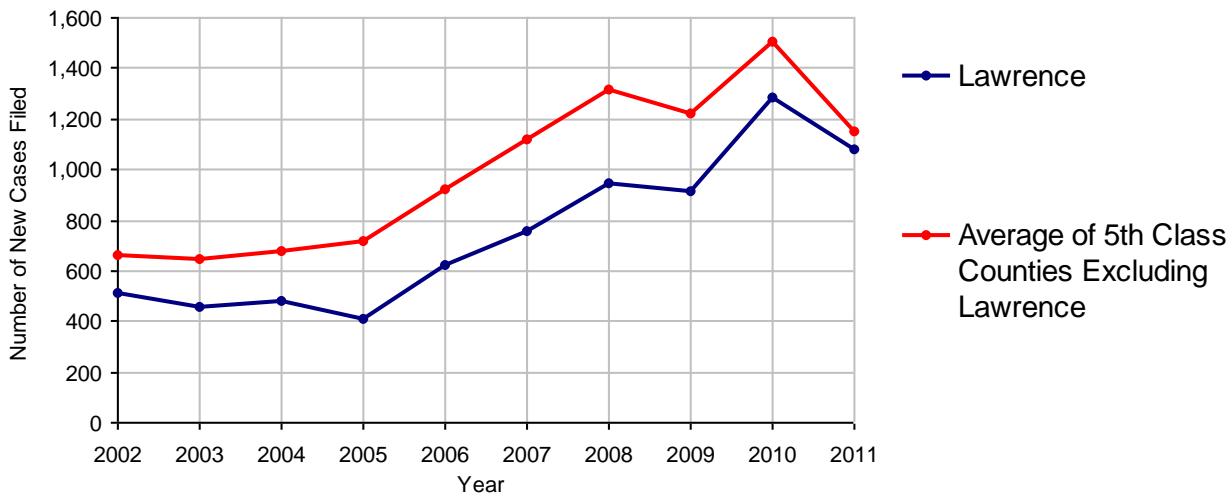
2011 Population Estimate: 90,535  
 Class of County: 5th  
 No. of Common Pleas Court Judgeships: 4



| 2011 Civil                            | Civil Action | Other      | Total        |
|---------------------------------------|--------------|------------|--------------|
| Cases Pending 1/1/2011                | 76           | 169        | 245          |
| Docketed Cases                        | 675          | 408        | 1,083        |
| Arbitration Appeals                   | 4            | 3          | 7            |
| Transferred In                        | 0            | 9          | 9            |
| Returned to Active                    | 0            | 1          | 1            |
| <b>Cases Available for Processing</b> | <b>755</b>   | <b>590</b> | <b>1,345</b> |
| Disposed By:                          |              |            |              |
| Default Judgments                     | 188          | 57         | 245          |
| Cases Decided by Arbitration Board    | 18           | 20         | 38           |
| Dispositive Motions                   | 9            | 11         | 20           |
| Settlements                           | 40           | 30         | 70           |
| Moved to Inactive Status              | 5            | 3          | 8            |
| Transferred/Withdrawn                 | 30           | 26         | 56           |
| Pa.R.J.A. 1901 Administrative Purge   | 22           | 84         | 106          |
| Other                                 | 401          | 136        | 537          |
| Jury Trial                            | 5            | 5          | 10           |
| Non-Jury Trial                        | 2            | 0          | 2            |
| <b>Total Cases Disposed</b>           | <b>720</b>   | <b>372</b> | <b>1,092</b> |
| <b>Cases Pending 12/31/2011</b>       | <b>35</b>    | <b>218</b> | <b>253</b>   |

| Age of Pending Cases as of 12/31/2011 (Civil Action Only) |           |               |
|---|-----------|---------------|
| 0-6 months  | 24        | 68.6%         |
| 7-12 months   | 3         | 8.6%          |
| 13-18 months  | 5         | 14.3%         |
| 19-24 months  | 1         | 2.9%          |
| 25-30 months  | 0         |               |
| 31-36 months  | 1         | 2.9%          |
| 37-42 months  | 0         |               |
| 43-48 months  | 0         |               |
| 49-54 months  | 0         |               |
| 55-60 months  | 0         |               |
| 61-66 months  | 0         |               |
| 67-72 months  | 0         |               |
| Over 72 months  | 1         | 2.9%          |
| <b>Total</b>  | <b>35</b> | <b>100.0%</b> |

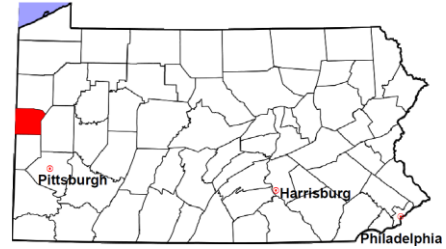
Docketed Cases, 2002-2011



Note: Prior to June 2010, docketed cases under the "Other" category were not reported. The reporting of these cases starting from June 2010 may contribute to an increase in docketed cases from 2009 to 2010.

# Lawrence County

2011 Population Estimate: 90,535  
 Class of County: 5th  
 No. of Common Pleas Court Judgeships: 4



## 2011 Civil - Docketed Cases Listed by Case Type

### TORT (does not include mass tort)

|                          |    |
|--------------------------|----|
| Intentional              | 5  |
| Malicious Prosecution    | 2  |
| Motor Vehicle            | 90 |
| Nuisance                 | 0  |
| Premise Liability        | 16 |
| Product Liability        | 1  |
| Slander/Libel/Defamation | 1  |
| Other                    | 20 |

### MASS TORT

|                      |   |
|----------------------|---|
| Asbestos             | 1 |
| Tobacco              | 0 |
| Toxic Tort - DES     | 0 |
| Toxic Tort - Implant | 0 |
| Toxic Waste          | 0 |
| Other                | 0 |

### PROFESSIONAL LIABILITY

|                     |    |
|---------------------|----|
| Dental              | 0  |
| Legal               | 1  |
| Medical Malpractice | 18 |
| Other               | 2  |

### CONTRACT

(does not include judgments)

|                           |     |
|---------------------------|-----|
| Buyer Plaintiff           | 18  |
| Debt Collection:          |     |
| Credit Card               | 321 |
| Debt Collection: Other    | 133 |
| Employment Dispute:       |     |
| Discrimination            | 1   |
| Employment Dispute: Other | 6   |
| Other                     | 32  |

### REAL PROPERTY

|                                  |     |
|----------------------------------|-----|
| Ejectment*                       | 36  |
| Eminent Domain/<br>Condemnation* | 3   |
| Ground Rent                      | 0   |
| Landlord/Tenant Dispute          | 7   |
| Mortgage Forclosure:             |     |
| Residential*                     | 209 |
| Commercial*                      | 8   |
| Partition of Real Property*      | 2   |
| Quiet Title*                     | 7   |
| Other*                           | 4   |

### CIVIL APPEALS

*Administrative Agencies*

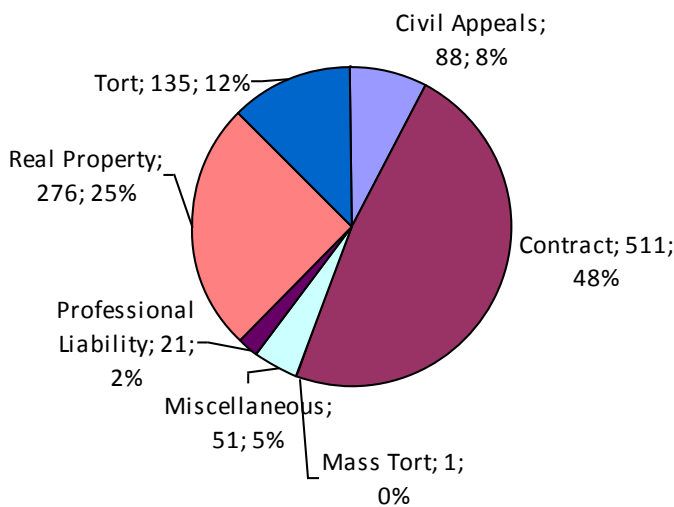
|                           |    |
|---------------------------|----|
| Board of Assessment*      | 22 |
| Board of Elections*       | 2  |
| Dept. of Transportation*  | 24 |
| Zoning Board*             | 2  |
| Statutory Appeal - Other* | 2  |
| Other*                    | 36 |

### MISCELLANEOUS

|  |    |
|--|----|
| Common Law/<br>Statutory Arbitration*        | 0  |
| Declaratory Judgment*                        | 4  |
| Mandamus*                                    | 3  |
| Non-Domestic Relations<br>Restraining Order* | 0  |
| Quo Warranto*                                | 0  |
| Replevin*                                    | 6  |
| Other*                                       | 38 |

**TOTAL DOCKETED CASES:**  
**1,083**

\* Civil Other



### Of the Docketed Cases:

|                     |    |      |
|---------------------|----|------|
| Pro Se Filings:     | 11 | 1.0% |
| Class Action Suits: | 0  |      |
| MDJ Appeals:        | 48 | 4.4% |

# Lawrence County

2011 Population Estimate: 90,535  
 Class of County: 5th  
 No. of Common Pleas Court Judgeships: 4



## 2011 Protection From Abuse

**No. of  
Petitions**

|                         |     |
|-------------------------|-----|
| Cases Pending 1/1/2011  | 26  |
| New Cases Filed in 2011 | 447 |

*Of these, Petitions Requesting Temporary Orders: 447 (100.0%)  
 Temporary Orders DENIED: 11 (2.5%), Temporary Orders GRANTED: 436 (97.5%)*

### Cases Available for Processing 473

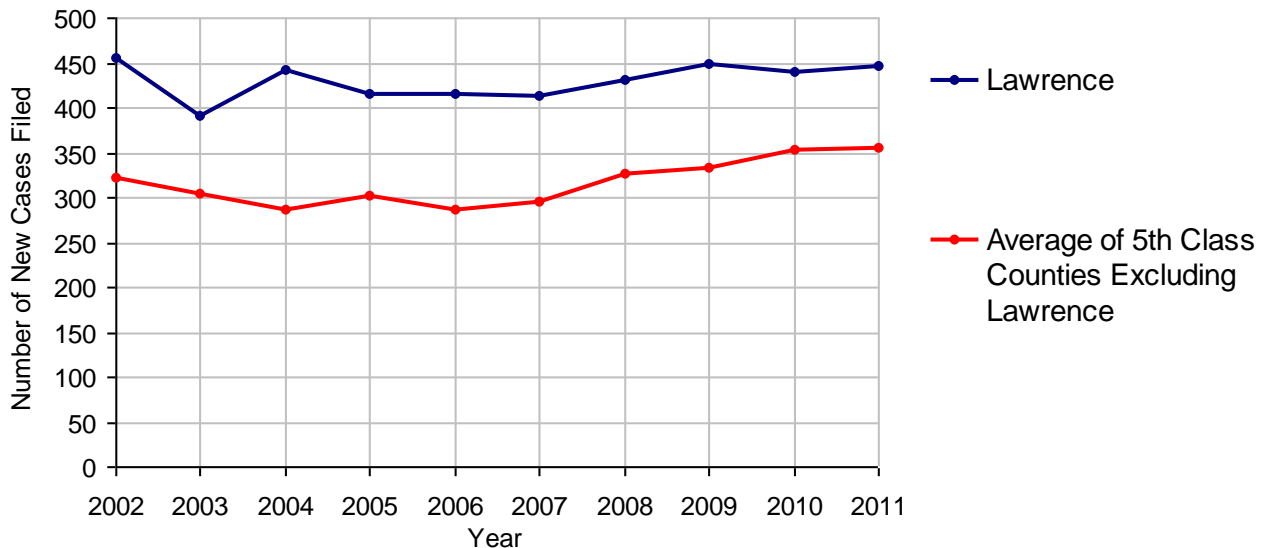
Processed By:

|  |     |       |
|--|-----|-------|
| Temporary Order DENIED After Ex Parte Hearing and No Evidentiary Hearing Scheduled | 10  | 2.3%  |
| Temporary Order DISMISSED After Evidentiary Hearing and No Final Order Entered     | 56  | 13.1% |
| Final Order DENIED After Evidentiary Hearing Before a Judge                        | 13  | 3.0%  |
| Final Order GRANTED After Evidentiary Hearing Before a Judge                       | 66  | 15.4% |
| Plaintiff Did Not Appear For Evidentiary Hearing                                   | 121 | 28.3% |
| Final Order by STIPULATION OR AGREEMENT Between the Parties                        | 97  | 22.7% |
| Petition WITHDRAWN by Plaintiff  | 65  | 15.2% |
| TRANSFERRED to Another Jurisdiction  | 0   |       |
| DECEASED Party   | 0   |       |
| Other  | 0   |       |

### Cases Processed 428 100.0%

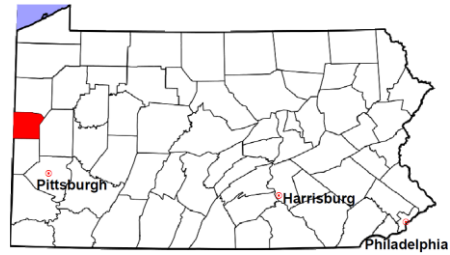
### Cases Pending 12/31/2011 45

**PFA New Cases Filed, 2002-2011**

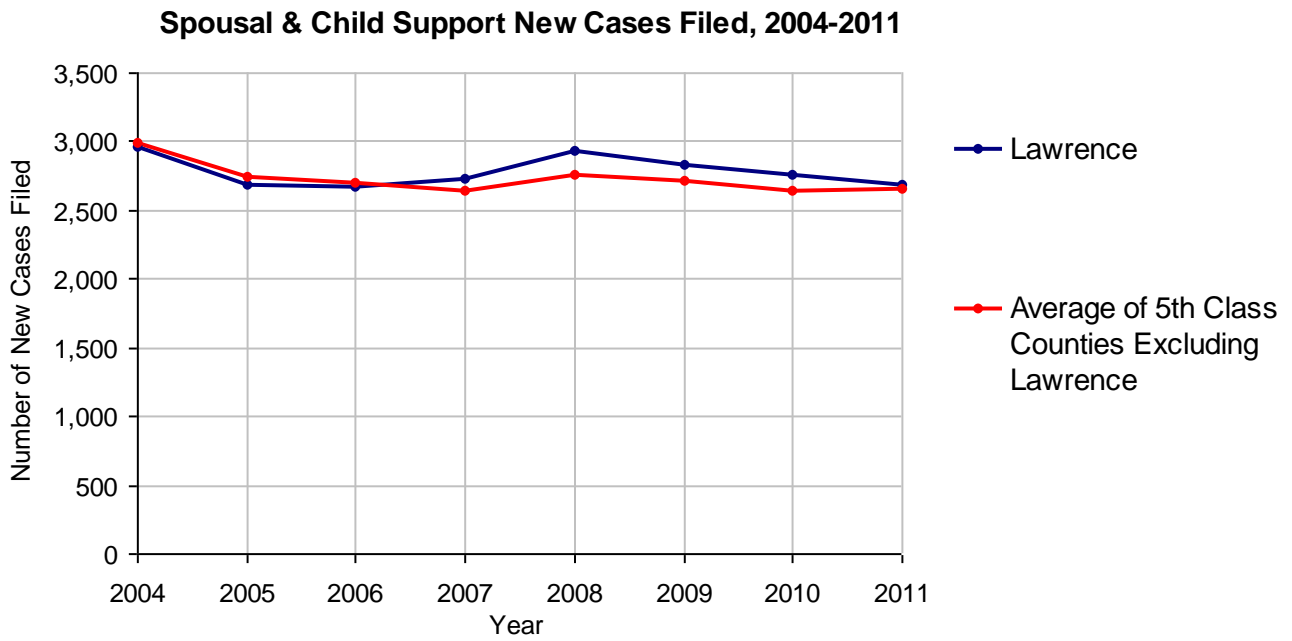


# Lawrence County

2011 Population Estimate: 90,535  
 Class of County: 5th  
 No. of Common Pleas Court Judgeships: 4



| <b>2011 Spousal &amp; Child Support</b> | <b>No. of Petitions</b> |               |
|---|-------------------------|---------------|
| Cases Pending 1/1/2011                  | 503                     |               |
| New Cases Filed in 2011                 | 2,682                   |               |
| Dockets Transferred In (+)              | 22                      |               |
| Dockets Transferred Out (-)             | 21                      |               |
| <b>Cases Available for Processing</b>   | <b>3,186</b>            |               |
| Processed By:                           |                         |               |
| Judge                                   | 91                      | 3.4%          |
| Intake Officer                          | 2,577                   | 96.6%         |
| Hearing Officer                         | 0                       |               |
| Other                                   | 1                       | <0.1%         |
| <b>Cases Processed</b>                  | <b>2,669</b>            | <b>100.0%</b> |
| <b>Cases Pending 12/31/2011</b>         | <b>517</b>              |               |

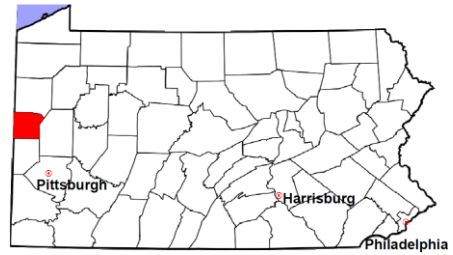


# Lawrence County

2011 Population Estimate: 90,535

Class of County: 5th

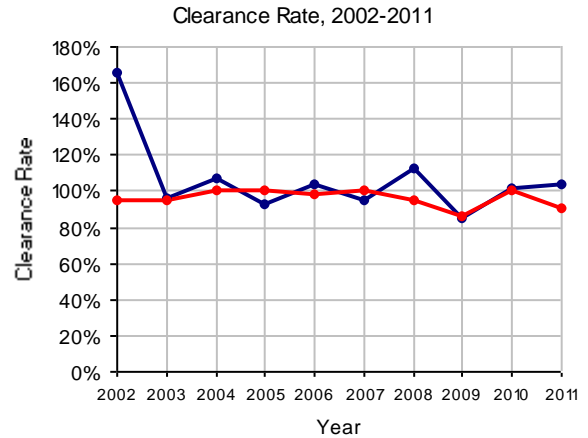
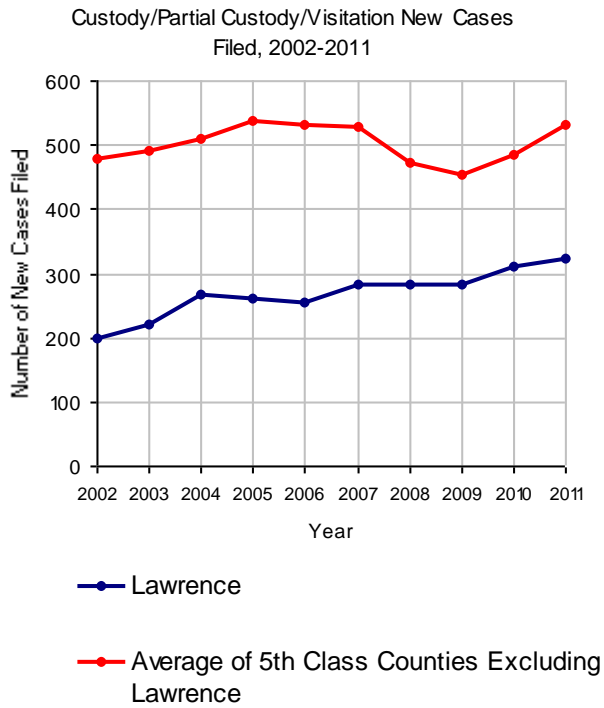
No. of Common Pleas Court Judgeships: 4



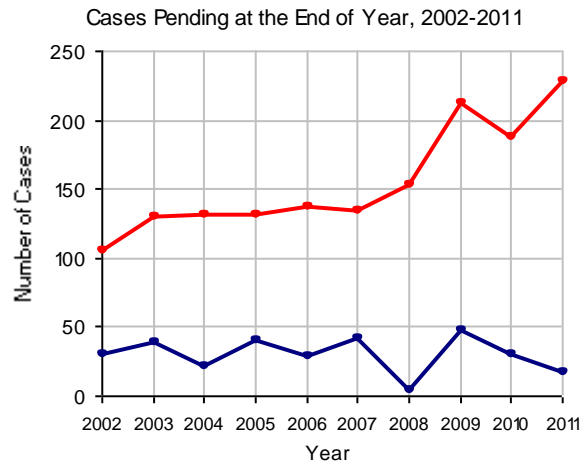
## 2011 Custody/Partial Custody/Visitation

No. of  
Petitions

|                                       |                   |
|---------------------------------------|-------------------|
| Cases Pending 1/1/2011                | 30                |
| New Cases Filed in 2011               | 322               |
| <b>Cases Available for Processing</b> | <b>352</b>        |
| Processed By:                         |                   |
| Judge                                 | 330 98.8%         |
| Non-Judicial Officer                  | 0                 |
| Other                                 | 4 1.2%            |
| <b>Cases Processed</b>                | <b>334 100.0%</b> |
| <b>Cases Pending 12/31/2011</b>       | <b>18</b>         |

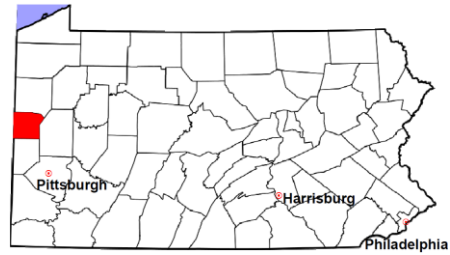


Note: Clearance Rate = Cases Processed / New Cases Filed



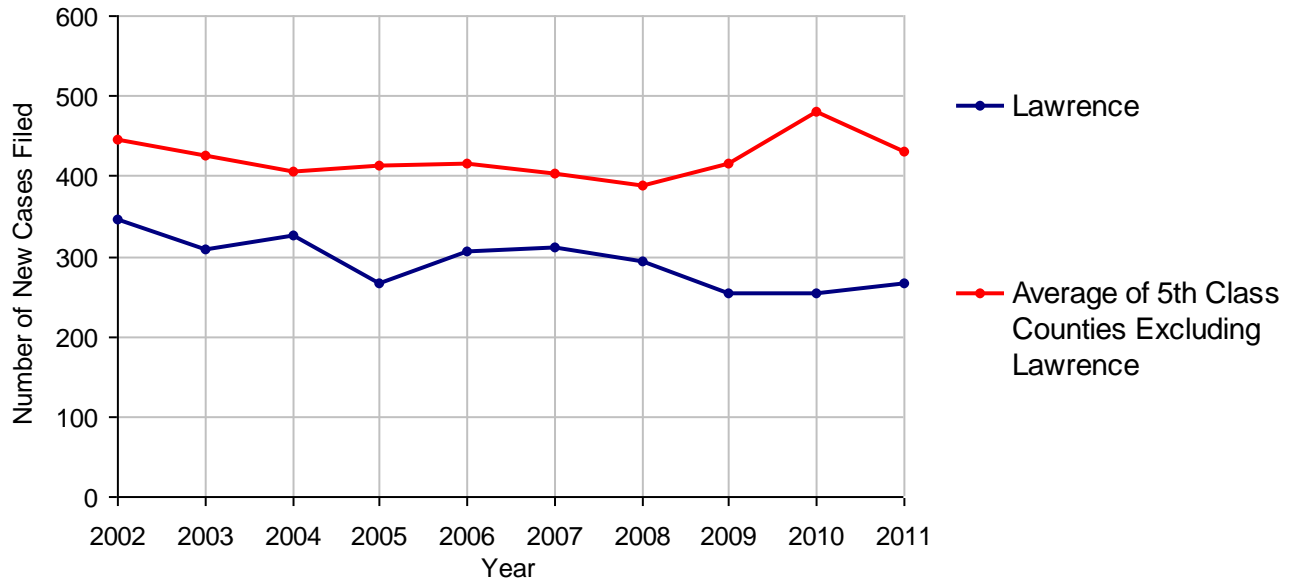
# Lawrence County

2011 Population Estimate: 90,535  
 Class of County: 5th  
 No. of Common Pleas Court Judgeships: 4



| <b>2011 Divorce</b>                   | <b>No. of Petitions</b> |               |
|---------------------------------------|-------------------------|---------------|
| Cases Pending 1/1/2011                | 250                     |               |
| New Cases Filed in 2011               | 266                     |               |
| <b>Cases Available for Processing</b> | <b>516</b>              |               |
| Processed By:                         |                         |               |
| Contested Before a Judge              | 95                      | 34.8%         |
| Contested Before a Master             | 0                       |               |
| Uncontested                           | 140                     | 51.3%         |
| Other                                 | 38                      | 13.9%         |
| <b>Cases Processed</b>                | <b>273</b>              | <b>100.0%</b> |
| <b>Cases Pending 12/31/2011</b>       | <b>243</b>              |               |

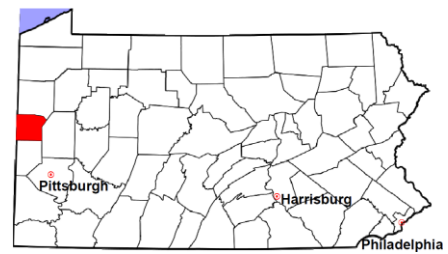
**Divorce New Cases Filed, 2002-2011**





# Lawrence County

2011 Population Estimate: 90,535  
 Class of County: 5th  
 No. of Common Pleas Court Judgeships: 4



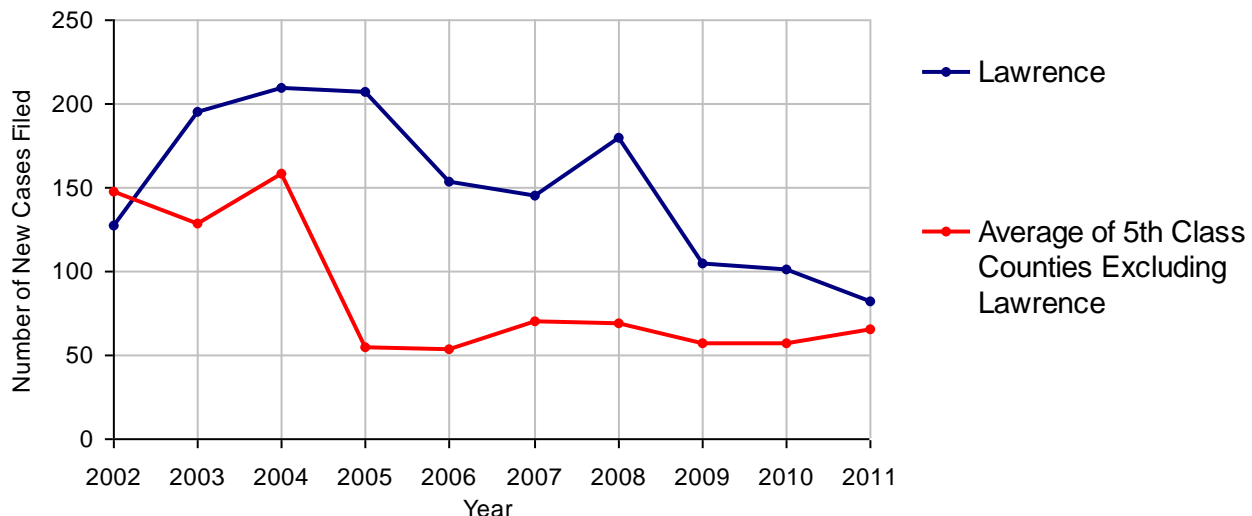
## 2011 Juvenile Dependency - Active Dependent Inventory



|   | Abuse/<br>Neglect | Status<br>Offenses | Total     |
|---|-------------------|--------------------|-----------|
| Cases Pending 1/1/2011                          | 13                | 0                  | 13        |
| New Petitions Filed in 2011                     | 82                | 0                  | 82        |
| Other   | 0                 | 0                  | 0         |
| <b>Total Petitions Available for Processing</b> | <b>95</b>         | <b>0</b>           | <b>95</b> |
| Processed by:                                   |                   |                    |           |
| Adjudicated Dependent                           |                   |                    |           |
| Judge   | 0                 | 0                  | 0         |
| Master  | 51                | 0                  | 51        |
| Adjudicated NOT Dependent                       |                   |                    |           |
| Judge   | 2                 | 0                  | 2         |
| Master  | 1                 | 0                  | 1         |
| Withdrawn/Dismissed/Inactive                    | 0                 | 0                  | 0         |
| Other   | 22                | 0                  | 22        |
| <b>Total Petitions Processed</b>                | <b>76</b>         | <b>0</b>           | <b>76</b> |
| <b>Cases Pending 12/31/2011</b>                 | <b>19</b>         | <b>0</b>           | <b>19</b> |

Data provided by CPCMS

Abuse/Neglect and Status Offenses New Cases Filed, 2002-2011



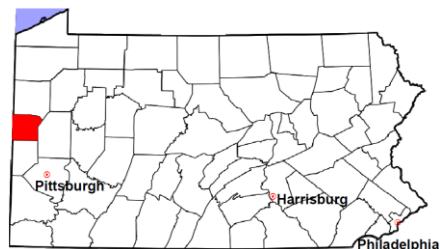
Note: Dependency data for 2002-2010 were collected manually. Dependency data for 2011 were provided by CPCMS.

# Lawrence County

2011 Population Estimate: 90,535

Class of County: 5th

No. of Common Pleas Court Judgeships: 4



## 2011 Juvenile Dependency - Adjudicated Dependent Inventory



|   | Abuse/<br>Neglect | Status<br>Offenses | Total      |               |
|---|-------------------|--------------------|------------|---------------|
| Cases Pending 1/1/2011                              | 129               | 0                  | 129        |               |
| New Adjudicated Dependent Cases                     | 51                | 0                  | 51         |               |
| Other   | 11                | 0                  | 11         |               |
| <b>Total Adjudicated Dependent Cases</b>            | <b>191</b>        | <b>0</b>           | <b>191</b> |               |
| <b><u>Court Supervision Terminated:</u></b>         |                   |                    |            |               |
| Family Reunification                                | 30                | 0                  | 30         | 46.9%         |
| Adoption  | 18                | 0                  | 18         | 28.1%         |
| Placement with a Relative/Guardian                  | 9                 | 0                  | 9          | 14.1%         |
| Aged Out  | 6                 | 0                  | 6          | 9.4%          |
| Other Permanency Outcomes*                          | 0                 | 0                  | 0          |               |
| Other**   | 1                 | 0                  | 1          | 1.6%          |
| <b>Total Adjudicated Dependent Cases Terminated</b> | <b>64</b>         | <b>0</b>           | <b>64</b>  | <b>100.0%</b> |
| <b>Cases Pending 12/31/2011</b>                     | <b>127</b>        | <b>0</b>           | <b>127</b> |               |

Data provided by CPCMS

\* Other Permanency Outcomes include: adjudicated delinquent, death due to natural causes, emancipation, permanent living arrangement, and parent has come forward.

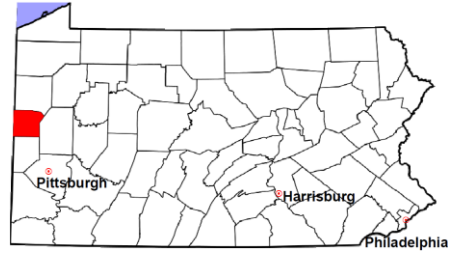
\*\* Other includes cases where Court Supervision is terminated due to transfer out of jurisdiction, withdrawal and administrative closures.

# Lawrence County

2011 Population Estimate: 90,535

Class of County: 5th

No. of Common Pleas Court Judgeships: 4

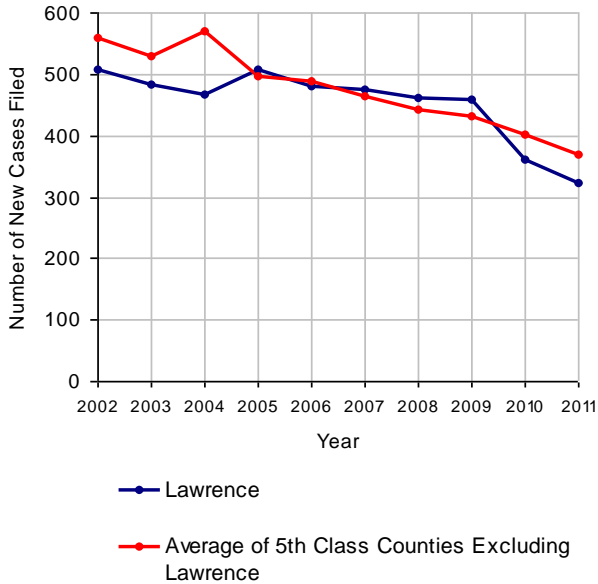


## 2011 Juvenile Delinquency

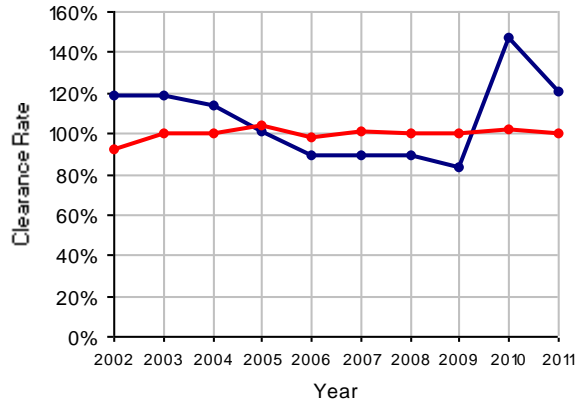
**No. of Cases**

|                                       |                   |
|---------------------------------------|-------------------|
| Cases Pending 1/1/2011                | 151               |
| New Cases Filed in 2011               | 323               |
| <b>Cases Available for Processing</b> | <b>474</b>        |
| Processed By:                         |                   |
| Judge                                 | 172 44.1%         |
| <b>Non-Judicial Officer</b>           | <b>218 55.9%</b>  |
| Other                                 | 0                 |
| <b>Cases Processed</b>                | <b>390 100.0%</b> |
| <b>Cases Pending 12/31/2011</b>       | <b>84</b>         |

Juvenile Delinquency New Cases Filed, 2002-2011

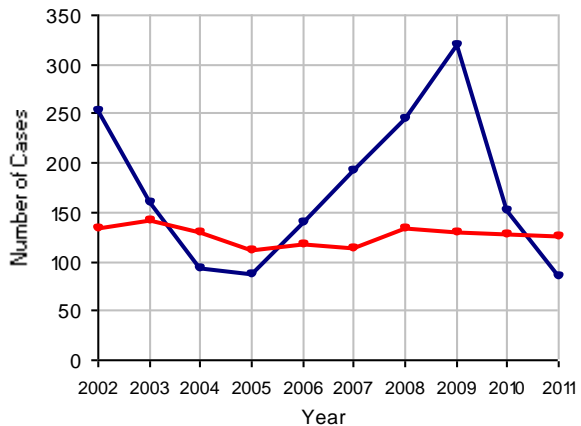


Clearance Rate, 2002-2011



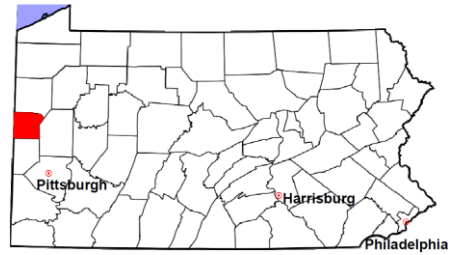
Note: Clearance Rate = Cases Processed / New Cases Filed

Cases Pending at the End of Year, 2002-2011



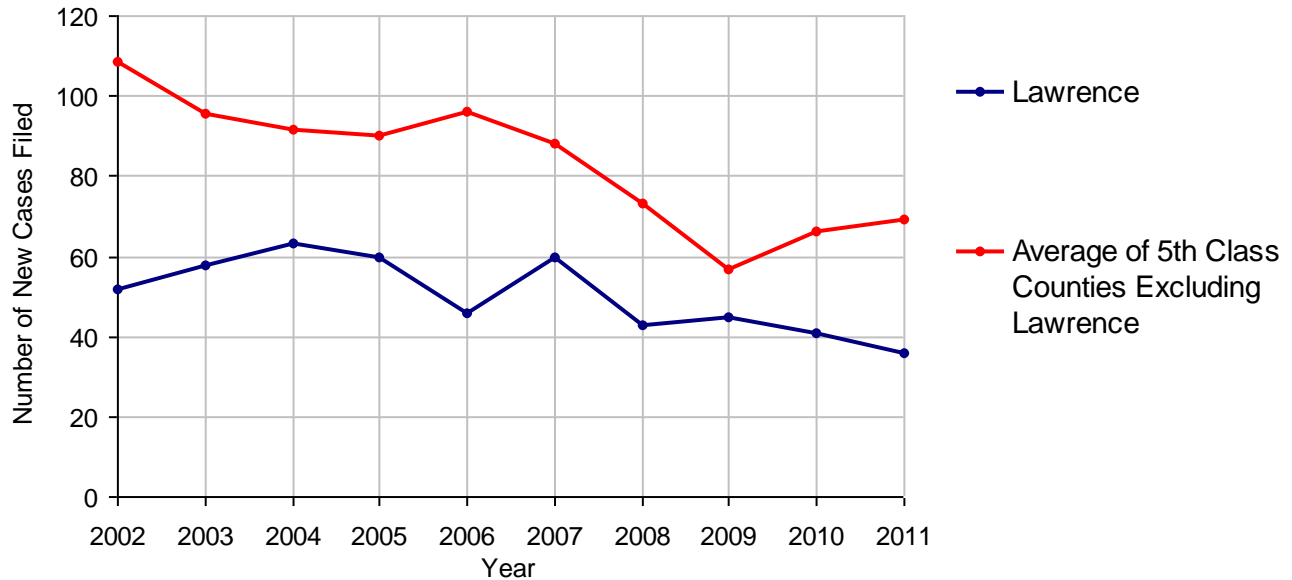
# Lawrence County

2011 Population Estimate: 90,535  
 Class of County: 5th  
 No. of Common Pleas Court Judgeships: 4



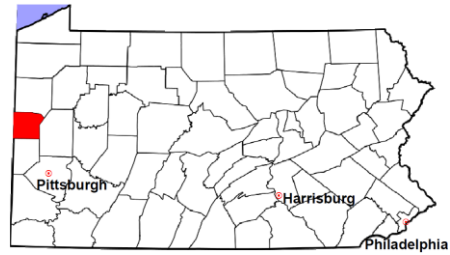
| <b>2011 Accounts</b>                    | <b>No. of Cases</b> |               |
|---|---------------------|---------------|
| Cases Pending 1/1/2011                  | 31                  |               |
| New Cases Filed in 2011                 | 36                  |               |
| <b>Cases Available for Processing</b>   | <b>67</b>           |               |
| Processed By:                           |                     |               |
| Contested before a Judge                | 0                   |               |
| Contested before a Non-judicial Officer | 1                   | 3.0%          |
| Uncontested                             | 27                  | 81.8%         |
| Other                                   | 5                   | 15.2%         |
| <b>Cases Processed</b>                  | <b>33</b>           | <b>100.0%</b> |
| <b>Cases Pending 12/31/2011</b>         | <b>34</b>           |               |

**Accounts New Cases Filed, 2002-2011**



# Lawrence County

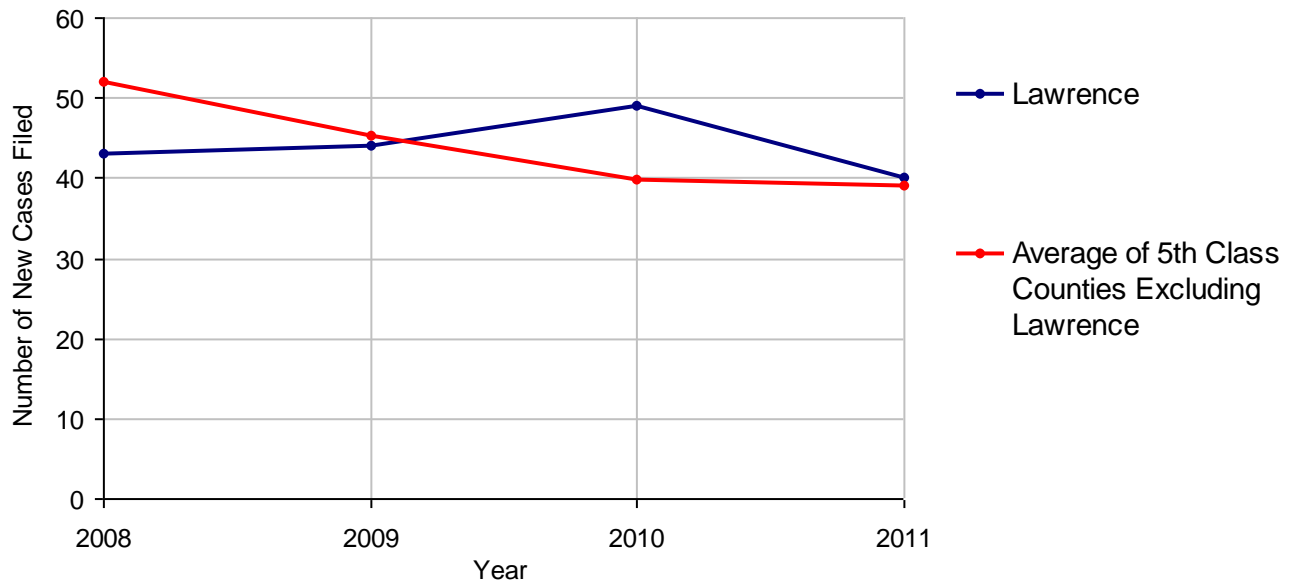
2011 Population Estimate: 90,535  
 Class of County: 5th  
 No. of Common Pleas Court Judgeships: 4



| <b>2011 Adoptions</b>                 |         | <b>No. of Cases</b> |               |
|---------------------------------------|---------|---------------------|---------------|
| Cases Pending 1/1/2011                |         | 27                  |               |
| New Cases Filed in 2011               |         | 40                  |               |
| <b>Cases Available for Processing</b> |         | <b>67</b>           |               |
| Processed By:                         |         |                     |               |
| Contested before a Judge              | Granted | 1                   | 2.4%          |
|                                       | Denied  | 0                   |               |
| Uncontested                           | Granted | 41                  | 97.6%         |
|                                       | Denied  | 0                   |               |
| Other                                 |         | 0                   |               |
| <b>Cases Processed</b>                |         | <b>42</b>           | <b>100.0%</b> |
| <b>Cases Pending 12/31/2011</b>       |         | <b>25</b>           |               |

(R) - Revised

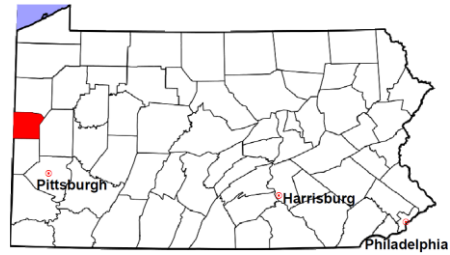
**Adoptions New Cases Filed, 2008-2011**



Note: Prior to 2008, each petition was counted as one new case, regardless of the number of children listed on the petition. Starting in 2008, each child listed on a petition is counted as a separate case. Therefore, statistics for the years since 2008 should not be compared to those for the years prior to 2008.

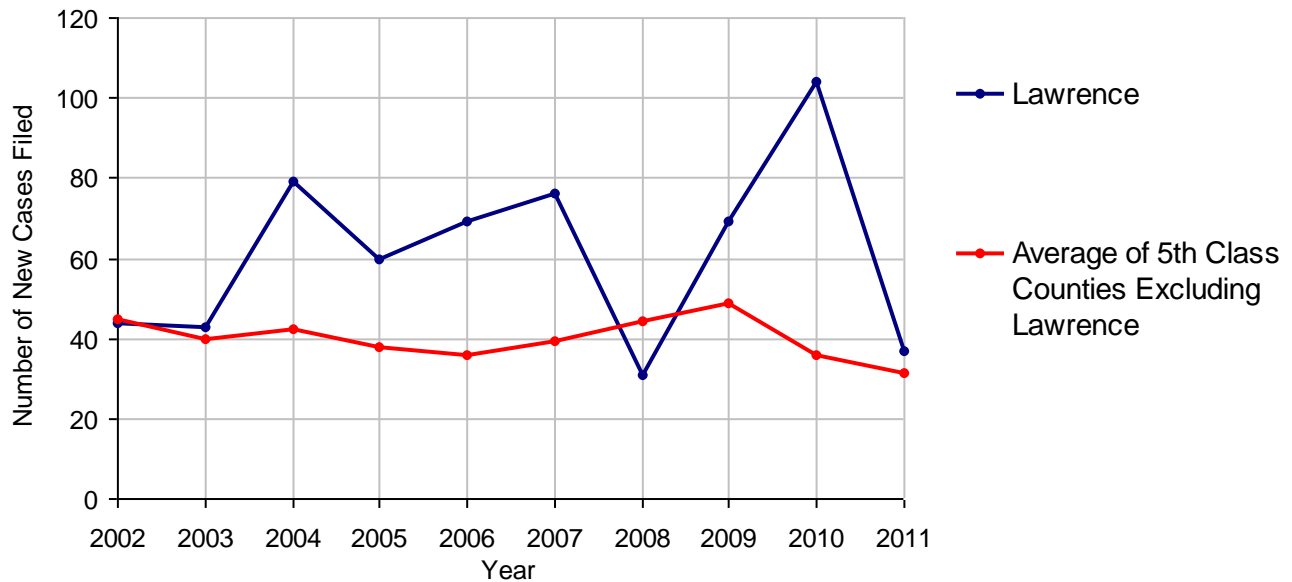
# Lawrence County

2011 Population Estimate: 90,535  
 Class of County: 5th  
 No. of Common Pleas Court Judgeships: 4



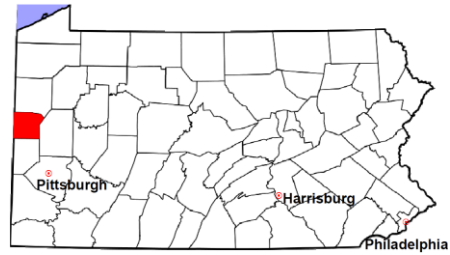
| 2011 Relinquishments/Terminations     | No. of Cases     |
|---------------------------------------|------------------|
| Cases Pending 1/1/2011                | 79               |
| New Cases Filed in 2011               | 37               |
| <b>Cases Available for Processing</b> | <b>116</b>       |
| Processed By:                         |                  |
| Contested before a Judge              | 0                |
| Uncontested                           | 56 100.0%        |
| Other                                 | 0                |
| <b>Cases Processed</b>                | <b>56 100.0%</b> |
| <b>Cases Pending 12/31/2011</b>       | <b>60</b>        |

Relinquishments/Terminations New Cases Filed, 2002-2011



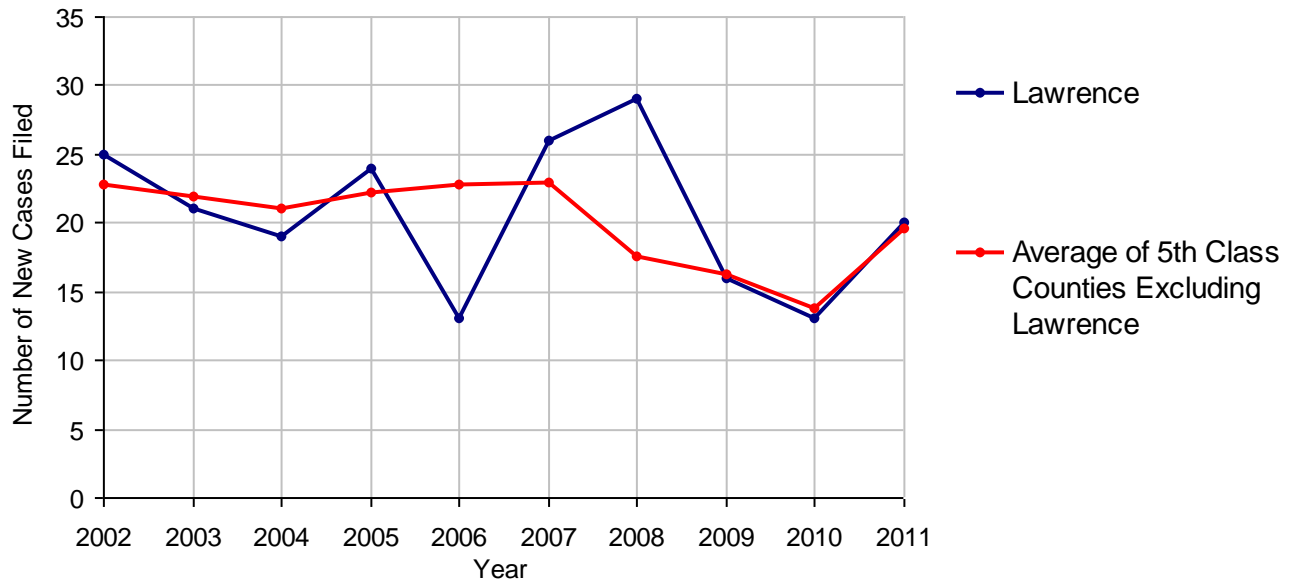
# Lawrence County

2011 Population Estimate: 90,535  
 Class of County: 5th  
 No. of Common Pleas Court Judgeships: 4



| <b>2011 Appointment of Guardians</b>  | <b>No. of Cases</b> |               |
|---------------------------------------|---------------------|---------------|
| Cases Pending 1/1/2011                | 56                  |               |
| New Cases Filed in 2011               | 20                  |               |
| <b>Cases Available for Processing</b> | <b>76</b>           |               |
| Processed By:                         |                     |               |
| Contested before a Judge              | 0                   |               |
| Uncontested                           | 17                  | 94.4%         |
| Other                                 | 1                   | 5.6%          |
| <b>Cases Processed</b>                | <b>18</b>           | <b>100.0%</b> |
| <b>Cases Pending 12/31/2011</b>       | <b>58</b>           |               |

**Appointment of Guardians New Cases Filed, 2002-2011**

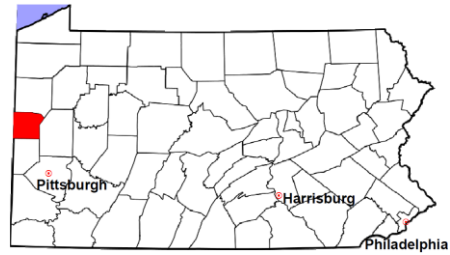


# Lawrence County

2011 Population Estimate: 90,535

Class of County: 5th

No. of Common Pleas Court Judgeships: 4



---

## 2011 Jury Activity and Performance Measures

---

|                                       |       |
|---------------------------------------|-------|
| A. Juror Days                         | 2,362 |
| B. Number Sent to Voir Dire           | 1,001 |
| Voir Dire Attendance Rate (B/A * 100) | 42.4% |
| C. Number of Jurors Selected          | 328   |
| Juror Selection Rate (C/B * 100)      | 32.8% |

---

Note: In mid-2011, AOPC began utilizing the National Center for State Courts' Jury Managers' Toolbox for collecting jury data. This has resulted in limited jury performance measures being reported for 2011. Additional data will be available in 2012.