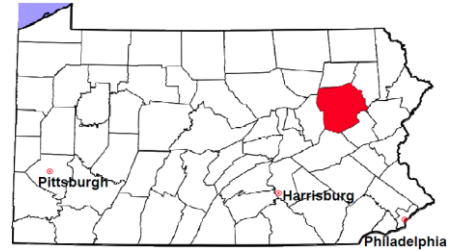


Luzerne County

2011 Population Estimate: 320,651
 Class of County: 3rd
 No. of Common Pleas Court Judgeships: 10



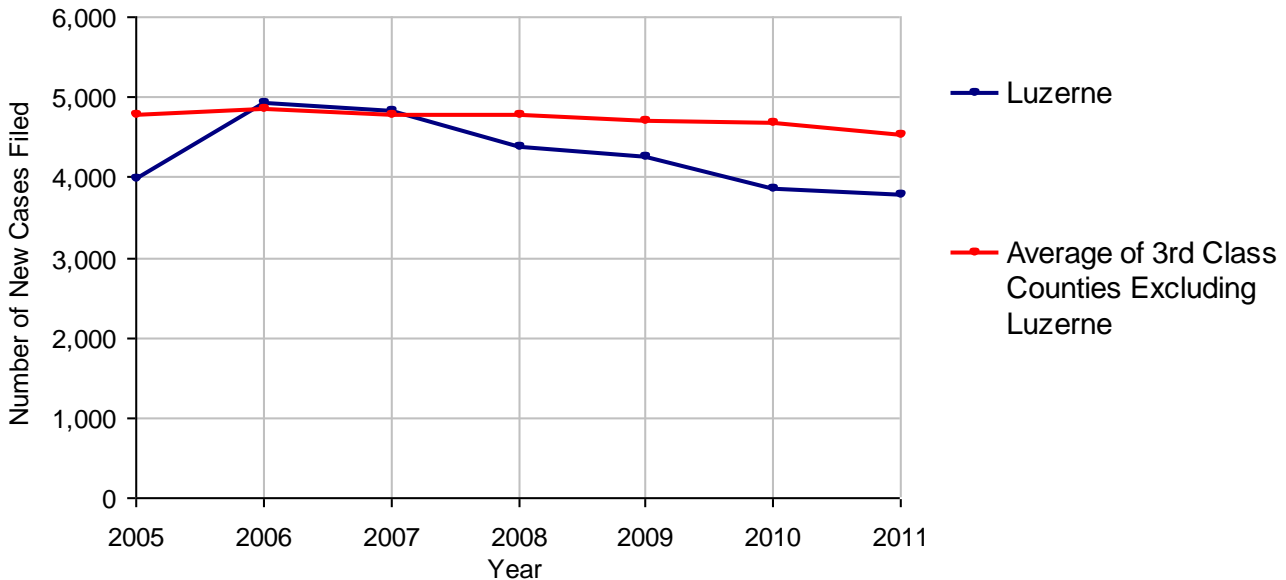
2011 Criminal	No. of Cases
Cases Pending 1/1/2011	2,133
New Cases Filed in 2011	3,806
Reopened Cases	261
Cases Available for Disposition	6,200
Disposed by:	
Withdrawn/Dismissed	207 5.6%
ARD	636 17.2%
Guilty Plea	2,361 63.9%
Non-Jury Trial	12 0.3%
Jury Trial	53 1.4%
Inactive	322 8.7%
Other	102 2.8%
Total Cases Disposed	3,693 100.0%
Cases Pending 12/31/2011	2,507
Cases Awaiting Sentencing	202



Age of Pending Cases as of 12/31/2011		
0-60 Days	642	25.6%
61-120 Days	560	22.3%
121-180 Days	334	13.3%
181-240 Days	273	10.9%
241-300 Days	243	9.7%
301-360 Days	144	5.7%
Over 360 Days	311	12.4%
Total	2,507	100.0%

Data provided by CPCMS

Criminal New Cases Filed, 2005-2011

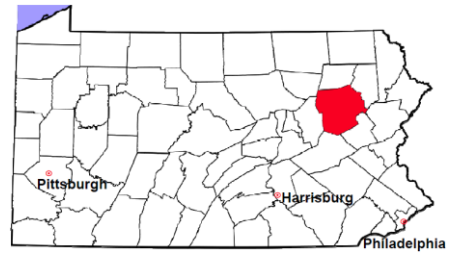


Luzerne County

2011 Population Estimate: 320,651

Class of County: 3rd

No. of Common Pleas Court Judgeships: 10



2011 Criminal - New Cases by Case Type



Case Type	Felony	Misdemeanor	Summary /Ungraded	Total
Person	184	266	2	452
Property	550	656	24	1,230
Drug	249	200	1	450
Weapon	36	24	0	60
Public Order	146	320	4	470
Motor Vehicle - DWI/DUI	0	1,133	0	1,133
Motor Vehicle - Other	0	10	0	10
Other	1	0	0	1
Total	1,166	2,609	31	3,806
	30.6%	68.5%	0.8%	100.0%

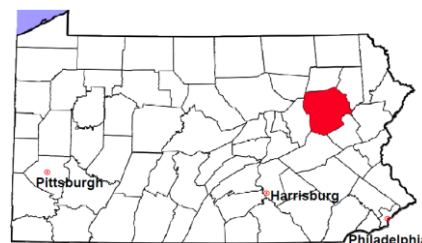
Data provided by CPCMS

Luzerne County

2011 Population Estimate: 320,651

Class of County: 3rd

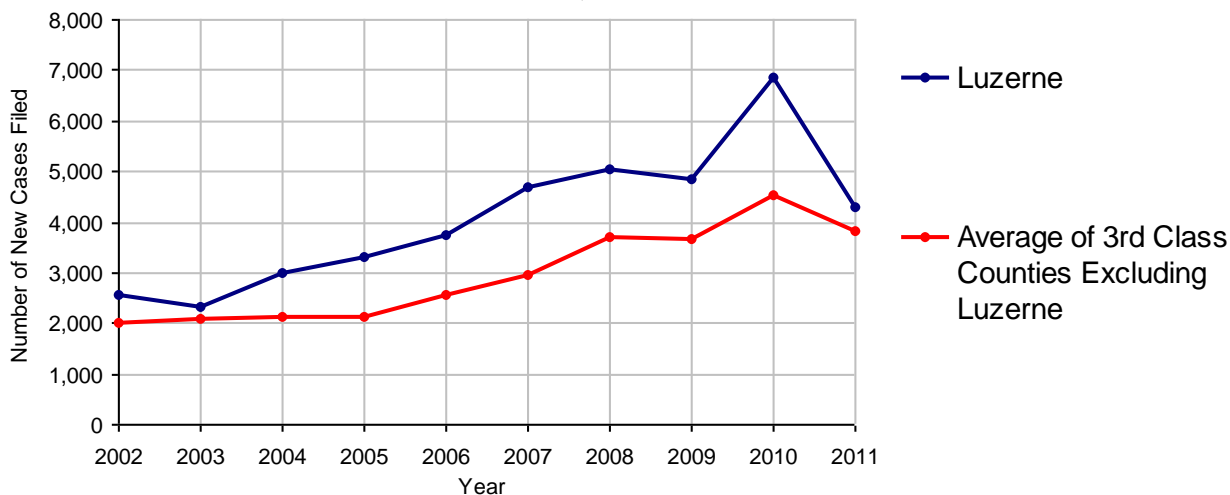
No. of Common Pleas Court Judgeships: 10



2011 Civil	Civil Action	Other	Total
Cases Pending 1/1/2011	337	1,017	1,354
Docketed Cases	3,177	1,111	4,288
Arbitration Appeals	312	30	342
Transferred In	11	0	11
Returned to Active	0	0	0
Cases Available for Processing	3,837	2,158	5,995
Disposed By:			
Default Judgments	1,103	937	2,040
Cases Decided by Arbitration Board	182	43	225
Dispositive Motions	0	0	0
Settlements	291	163	454
Moved to Inactive Status	0	0	0
Transferred/Withdrawn	17	8	25
Pa.R.J.A. 1901 Administrative Purge	0	0	0
Other	1,699	575	2,274
Jury Trial	31	2	33
Non-Jury Trial	31	1	32
Total Cases Disposed	3,354	1,729	5,083
Cases Pending 12/31/2011	483	429	912

Age of Pending Cases as of 12/31/2011 (Civil Action Only)		
0-6 months	119	24.6%
7-12 months	74	15.3%
13-18 months	46	9.5%
19-24 months	39	8.1%
25-30 months	22	4.6%
31-36 months	26	5.4%
37-42 months	24	5.0%
43-48 months	18	3.7%
49-54 months	19	3.9%
55-60 months	18	3.7%
61-66 months	14	2.9%
67-72 months	15	3.1%
Over 72 months	49	10.1%
Total	483	100.0%

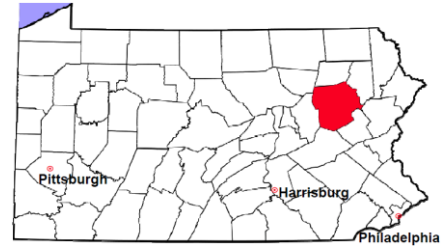
Docketed Cases, 2002-2011



Note: Prior to June 2010, docketed cases under the "Other" category were not reported. The reporting of these cases starting from June 2010 may contribute to an increase in docketed cases from 2009 to 2010.

Luzerne County

2011 Population Estimate: 320,651
 Class of County: 3rd
 No. of Common Pleas Court Judgeships: 10



2011 Civil - Docketed Cases Listed by Case Type

TORT (does not include mass tort)

Intentional	12
Malicious Prosecution	1
Motor Vehicle	327
Nuisance	3
Premise Liability	64
Product Liability	7
Slander/Libel/Defamation	3
Other	1,653

MASS TORT

Asbestos	0
Tobacco	0
Toxic Tort - DES	0
Toxic Tort - Implant	0
Toxic Waste	0
Other	1

PROFESSIONAL LIABILITY

Dental	0
Legal	3
Medical Malpractice	47
Other	3

CONTRACT

(does not include judgments)

Buyer Plaintiff	15
Debt Collection:	
Credit Card	657
Other	290
Employment Dispute:	
Discrimination	0
Other	3
Other	78

REAL PROPERTY

Ejectment*	132
Eminent Domain/ Condemnation*	9
Ground Rent	0
Landlord/Tenant Dispute	10
Mortgage Forclosures:	
Residential*	393
Commercial*	0
Partition of Real Property*	6
Quiet Title*	63
Other*	77

CIVIL APPEALS

Administrative Agencies

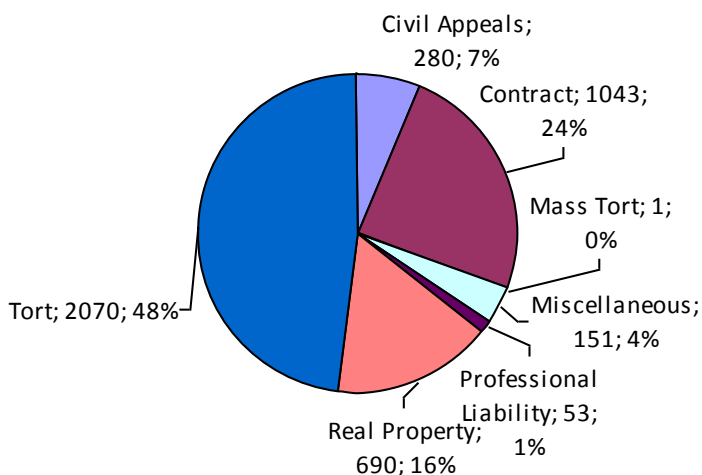
Board of Assessment*	97
Board of Elections*	21
Dept. of Transportation*	66
Zoning Board*	13
Statutory Appeal - Other*	10
Other*	73

MISCELLANEOUS

Common Law/ Statutory Arbitration*	0
Declaratory Judgment*	19
Mandamus*	1
Non-Domestic Relations Restraining Order*	3
Quo Warranto*	0
Replevin*	18
Other*	110

TOTAL DOCKETED CASES: 4,288

* Civil Other



Of the Docketed Cases:

Pro Se Filings:	54	1.3%
Class Action Suits:	0	
MDJ Appeals:	184	4.3%

Luzerne County

2011 Population Estimate: 320,651
 Class of County: 3rd
 No. of Common Pleas Court Judgeships: 10



2011 Protection From Abuse

**No. of
Petitions**

Cases Pending 1/1/2011 24

New Cases Filed in 2011 1,221

Of these, Petitions Requesting Temporary Orders: 1,221 (100.0%)

Temporary Orders DENIED: 66 (5.4%), Temporary Orders GRANTED: 1,155 (94.6%)

Cases Available for Processing 1,245

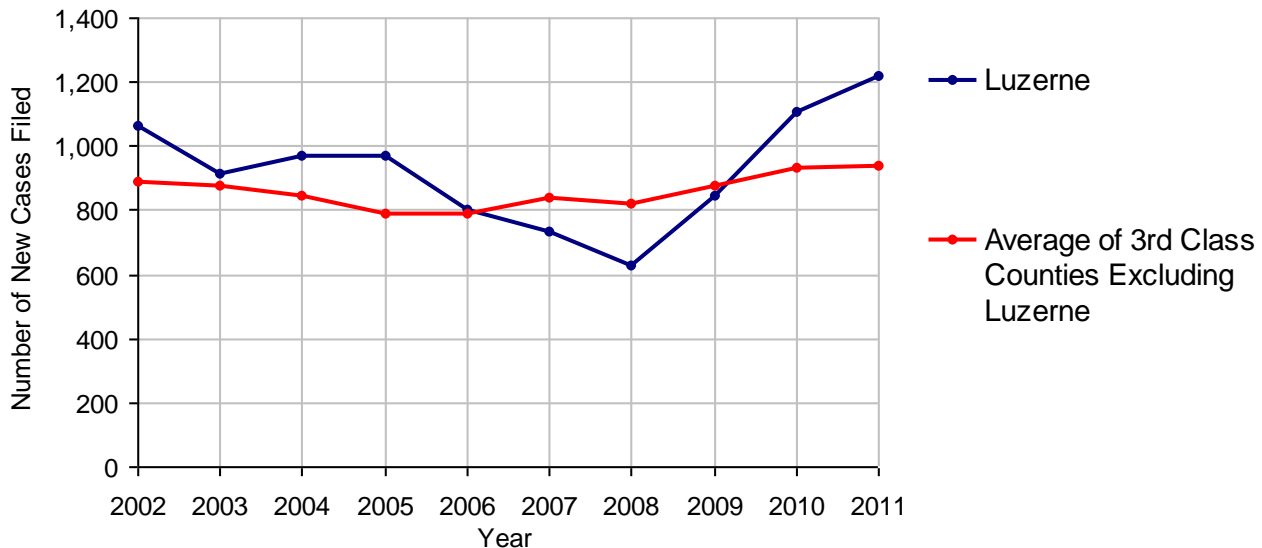
Processed By:

Temporary Order DENIED After Ex Parte Hearing and No Evidentiary Hearing Scheduled	0	
Temporary Order DISMISSED After Evidentiary Hearing and No Final Order Entered	32	2.6%
Final Order DENIED After Evidentiary Hearing Before a Judge	33	2.7%
Final Order GRANTED After Evidentiary Hearing Before a Judge	263	21.3%
Plaintiff Did Not Appear For Evidentiary Hearing	189	15.3%
Final Order by STIPULATION OR AGREEMENT Between the Parties	426	34.5%
Petition WITHDRAWN by Plaintiff	293	23.7%
TRANSFERRED to Another Jurisdiction	0	
DECEASED Party	0	
Other	0	

Cases Processed 1,236 100.0%

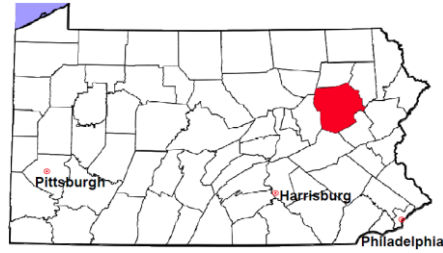
Cases Pending 12/31/2011 9

PFA New Cases Filed, 2002-2011

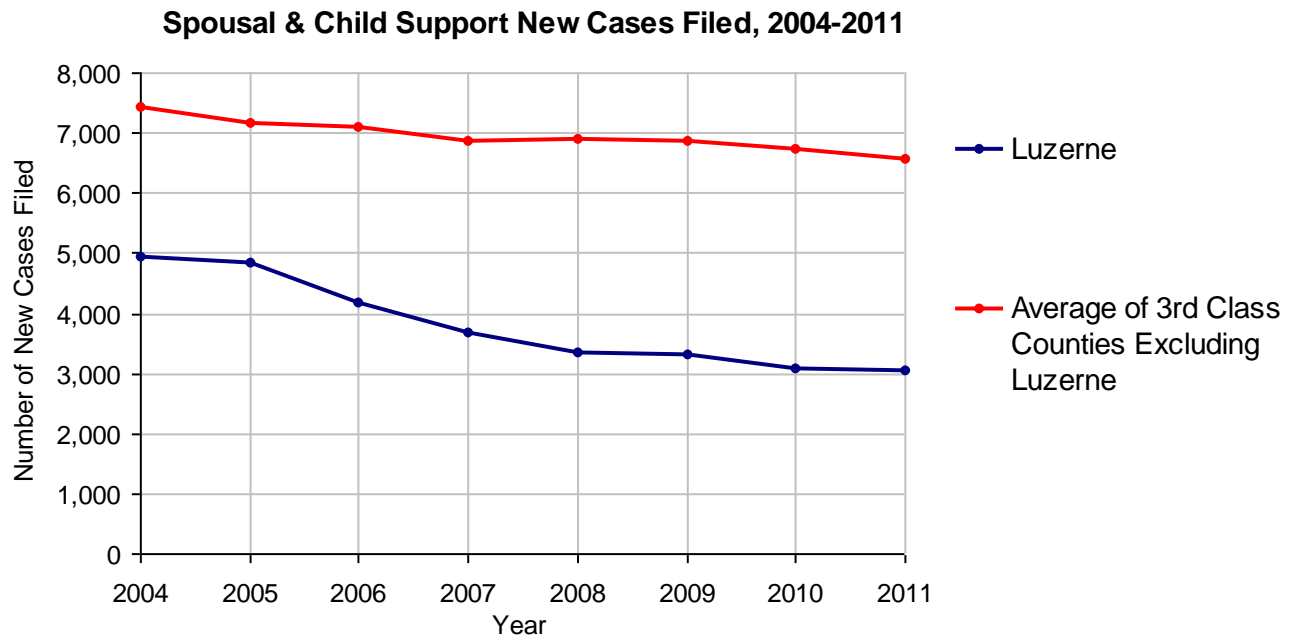


Luzerne County

2011 Population Estimate: 320,651
 Class of County: 3rd
 No. of Common Pleas Court Judgeships: 10



2011 Spousal & Child Support	No. of Petitions	
Cases Pending 1/1/2011	851	
New Cases Filed in 2011	3,064	
Dockets Transferred In (+)	34	
Dockets Transferred Out (-)	27	
Cases Available for Processing	3,922	
Processed By:		
Judge	55	1.8%
Intake Officer	3,024	97.5%
Hearing Officer	20	0.6%
Other	2	0.1%
Cases Processed	3,101	100.0%
Cases Pending 12/31/2011	821	

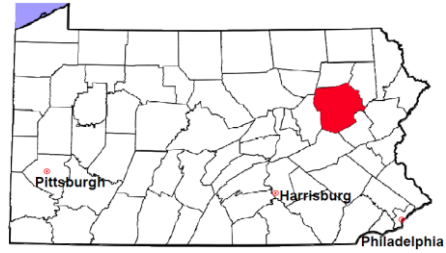


Luzerne County

2011 Population Estimate: 320,651

Class of County: 3rd

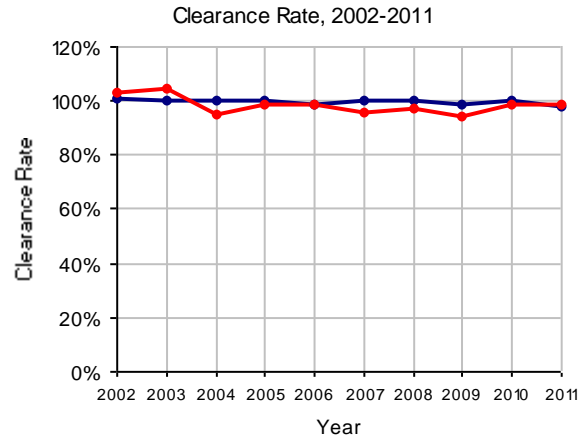
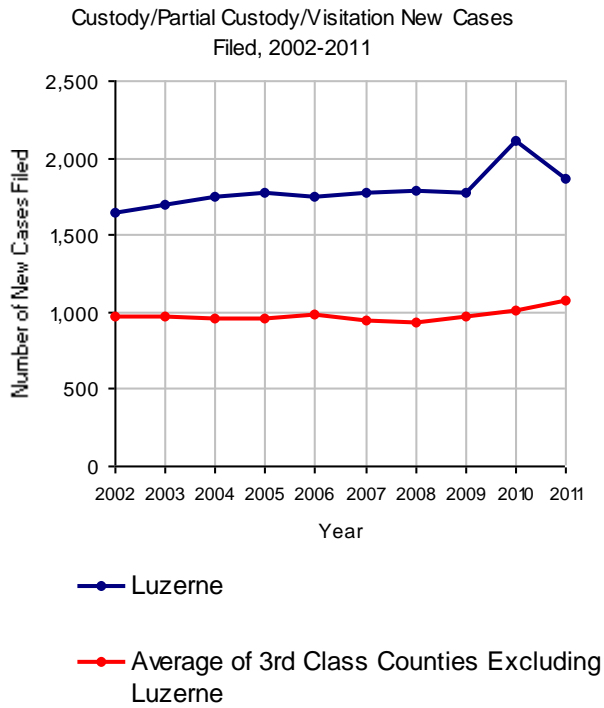
No. of Common Pleas Court Judgeships: 10



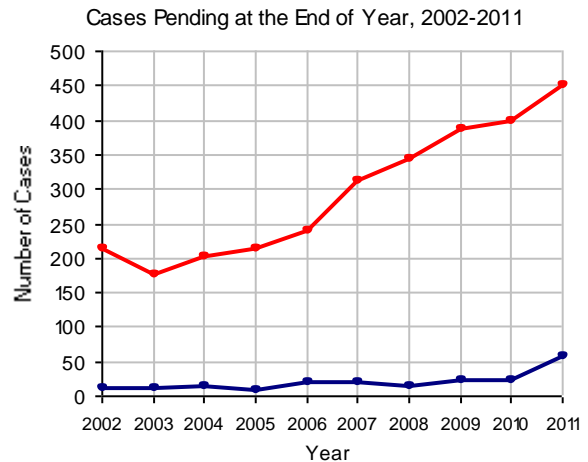
2011 Custody/Partial Custody/Visitation

No. of
Petitions

Cases Pending 1/1/2011	23
New Cases Filed in 2011	1,867
Cases Available for Processing	1,890
Processed By:	
Judge	326 17.8%
Non-Judicial Officer	1,506 82.2%
Other	0
Cases Processed	1,832 100.0%
Cases Pending 12/31/2011	58

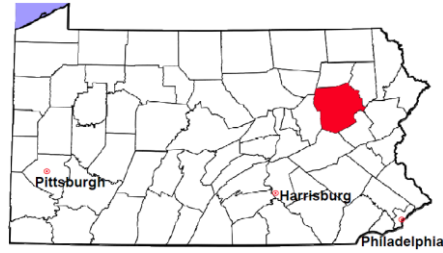


Note: Clearance Rate = Cases Processed / New Cases Filed



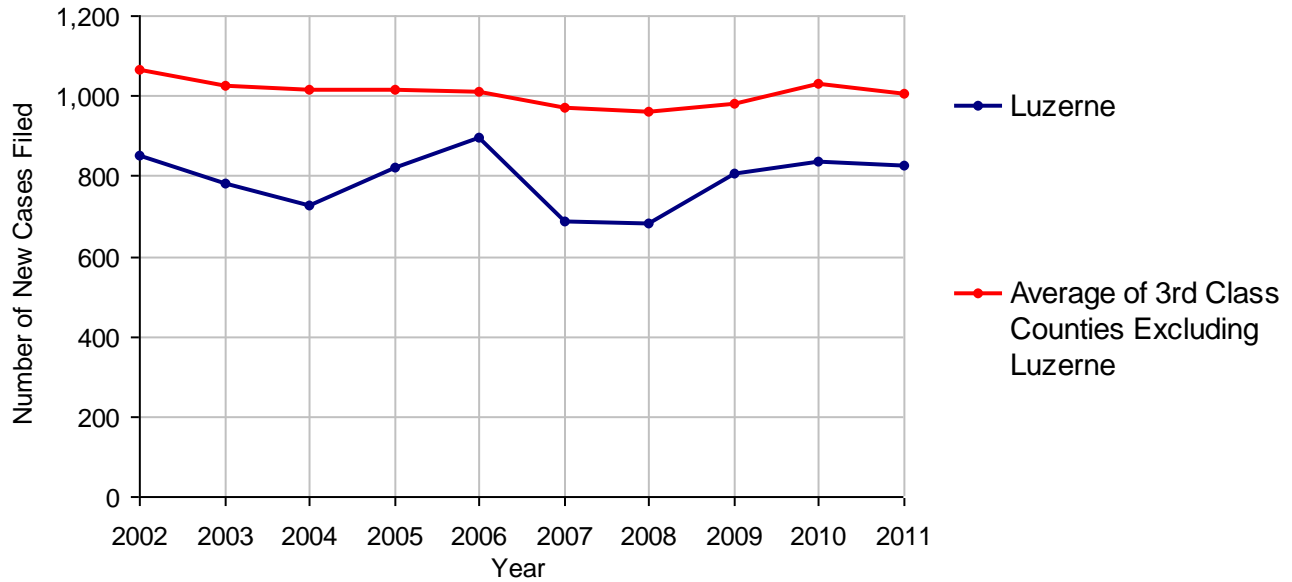
Luzerne County

2011 Population Estimate: 320,651
 Class of County: 3rd
 No. of Common Pleas Court Judgeships: 10



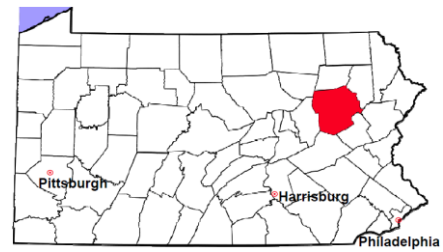
2011 Divorce	No. of Petitions	
Cases Pending 1/1/2011	363	
New Cases Filed in 2011	825	
Cases Available for Processing	1,188	
Processed By:		
Contested Before a Judge	35	4.4%
Contested Before a Master	728	91.5%
Uncontested	0	
Other	33	4.1%
Cases Processed	796	100.0%
Cases Pending 12/31/2011	392	

Divorce New Cases Filed, 2002-2011



Luzerne County

2011 Population Estimate: 320,651
 Class of County: 3rd
 No. of Common Pleas Court Judgeships: 10



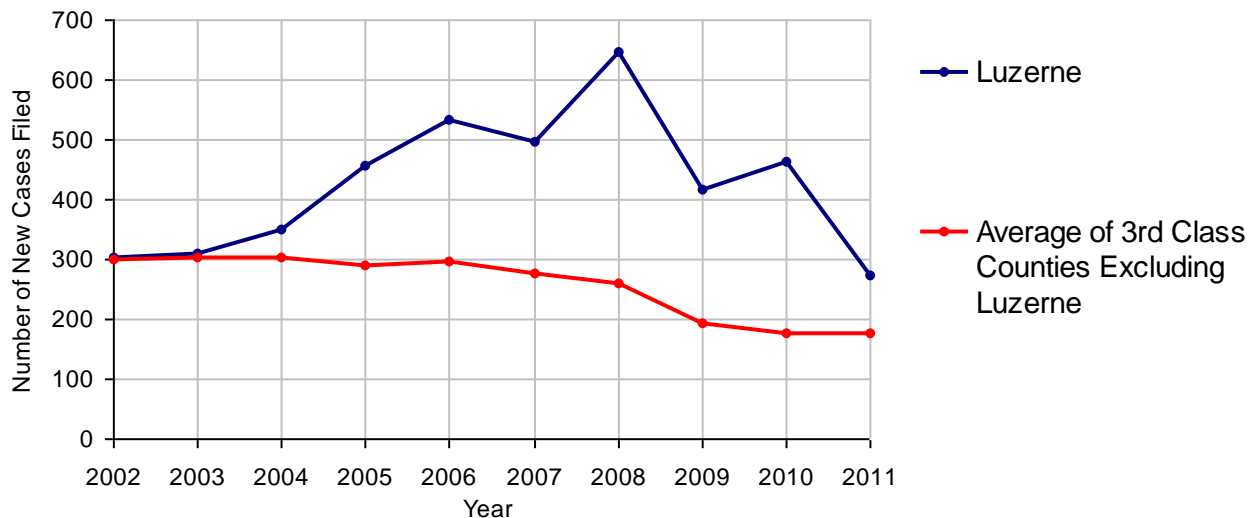
2011 Juvenile Dependency - Active Dependent Inventory



	Abuse/ Neglect	Status Offenses	Total
Cases Pending 1/1/2011	28	1	29
New Petitions Filed in 2011	265	10	275
Other	3	0	3
Total Petitions Available for Processing	296	11	307
Processed by:			
Adjudicated Dependent			
Judge	108	6	114
Master	53	0	53
Adjudicated NOT Dependent			
Judge	31	3	34
Master	8	0	8
Withdrawn/Dismissed/Inactive	4	0	4
Other	30	1	31
Total Petitions Processed	234	10	244
Cases Pending 12/31/2011	62	1	63

Data provided by CPCMS

Abuse/Neglect and Status Offenses New Cases Filed, 2002-2011



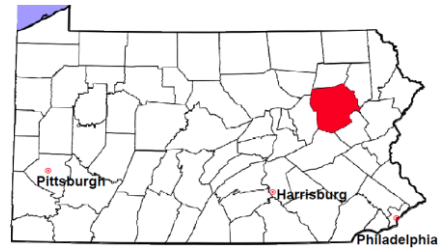
Note: Dependency data for 2002-2010 were collected manually. Dependency data for 2011 were provided by CPCMS.

Luzerne County

2011 Population Estimate: 320,651

Class of County: 3rd

No. of Common Pleas Court Judgeships: 10



2011 Juvenile Dependency - Adjudicated Dependent Inventory

	Abuse/ Neglect	Status Offenses	Total	
Cases Pending 1/1/2011	971	17	988	
New Adjudicated Dependent Cases	161	6	167	
Other	67	0	67	
Total Adjudicated Dependent Cases	1,199	23	1,222	
<u>Court Supervision Terminated:</u>				
Family Reunification	97	5	102	29.7%
Adoption	77	0	77	22.4%
Placement with a Relative/Guardian	86	6	92	26.8%
Aged Out	40	0	40	11.7%
Other Permanency Outcomes*	6	1	7	2.0%
Other**	25	0	25	7.3%
Total Adjudicated Dependent Cases Terminated	331	12	343	100.0%
Cases Pending 12/31/2011	868	11	879	

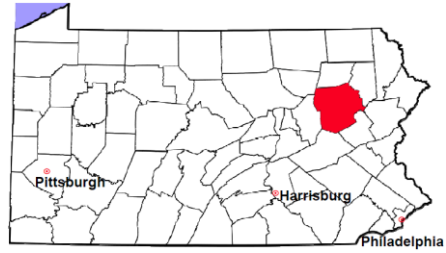
Data provided by CPCMS

* Other Permanency Outcomes include: adjudicated delinquent, death due to natural causes, emancipation, permanent living arrangement, and parent has come forward.

** Other includes cases where Court Supervision is terminated due to transfer out of jurisdiction, withdrawal and administrative closures.

Luzerne County

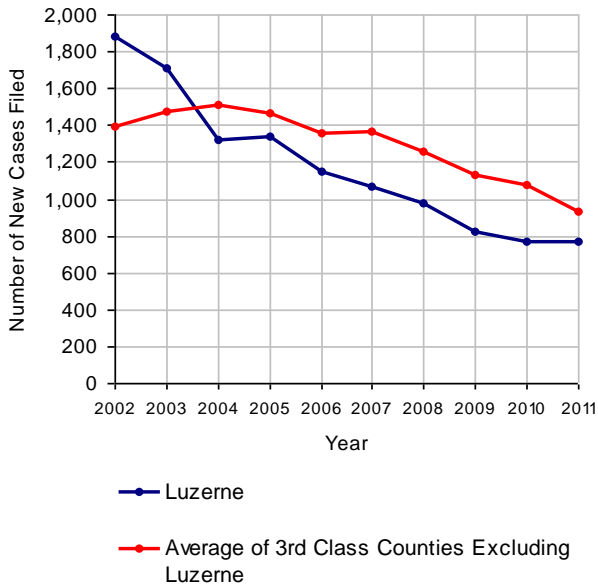
2011 Population Estimate: 320,651
 Class of County: 3rd
 No. of Common Pleas Court Judgeships: 10



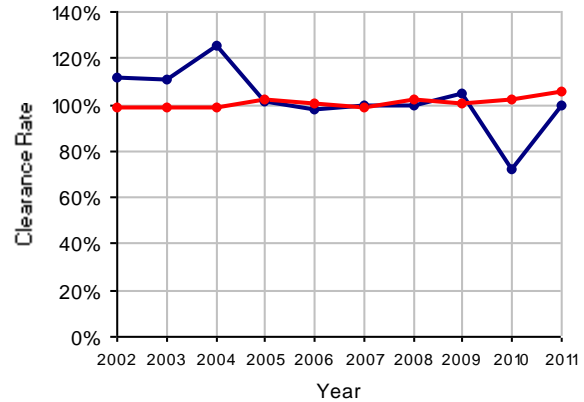
2011 Juvenile Delinquency

	No. of Cases
Cases Pending 1/1/2011	248
New Cases Filed in 2011	773
Cases Available for Processing	1,021
Processed By:	
Judge	255 33.2%
Non-Judicial Officer	485 63.2%
Other	27 3.5%
Cases Processed	767 100.0%
Cases Pending 12/31/2011	254

Juvenile Delinquency New Cases Filed, 2002-2011

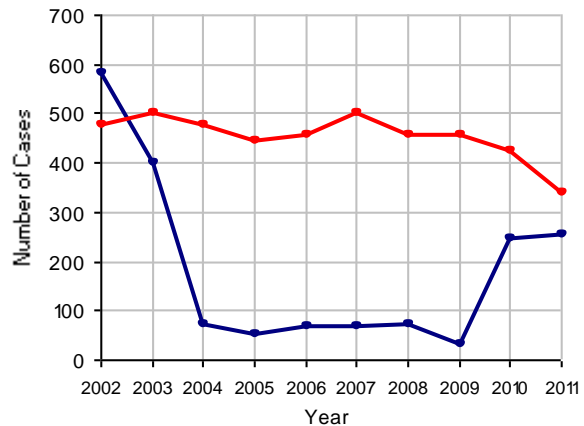


Clearance Rate, 2002-2011



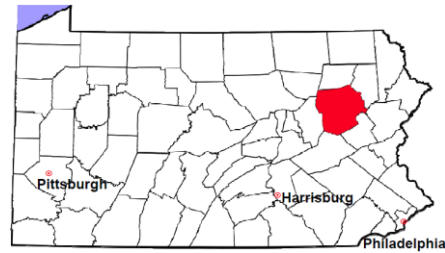
Note: Clearance Rate = Cases Processed / New Cases Filed

Cases Pending at the End of Year, 2002-2011



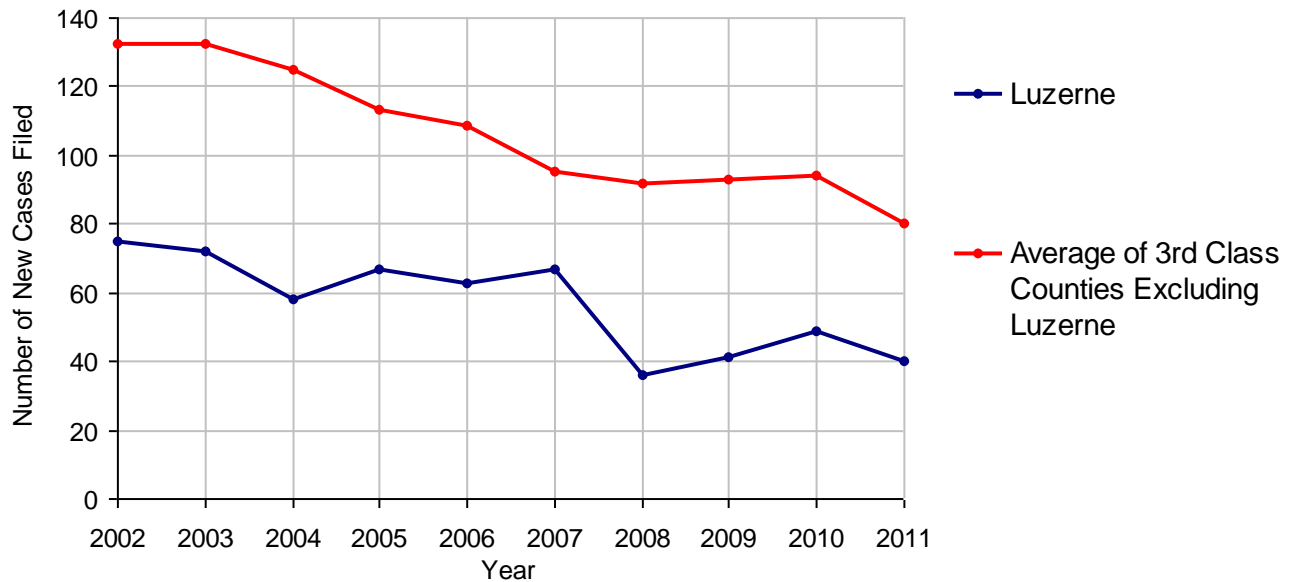
Luzerne County

2011 Population Estimate: 320,651
 Class of County: 3rd
 No. of Common Pleas Court Judgeships: 10



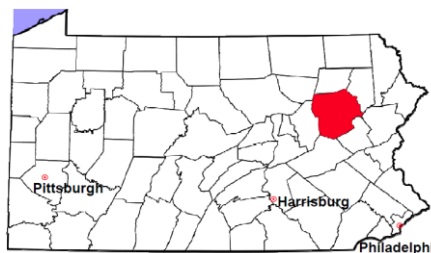
2011 Accounts	No. of Cases	
Cases Pending 1/1/2011	0	
New Cases Filed in 2011	40	
Cases Available for Processing	40	
Processed By:		
Contested before a Judge	0	
Contested before a Non-judicial Officer	0	
Uncontested	40	100.0%
Other	0	
Cases Processed	40	100.0%
Cases Pending 12/31/2011	0	

Accounts New Cases Filed, 2002-2011



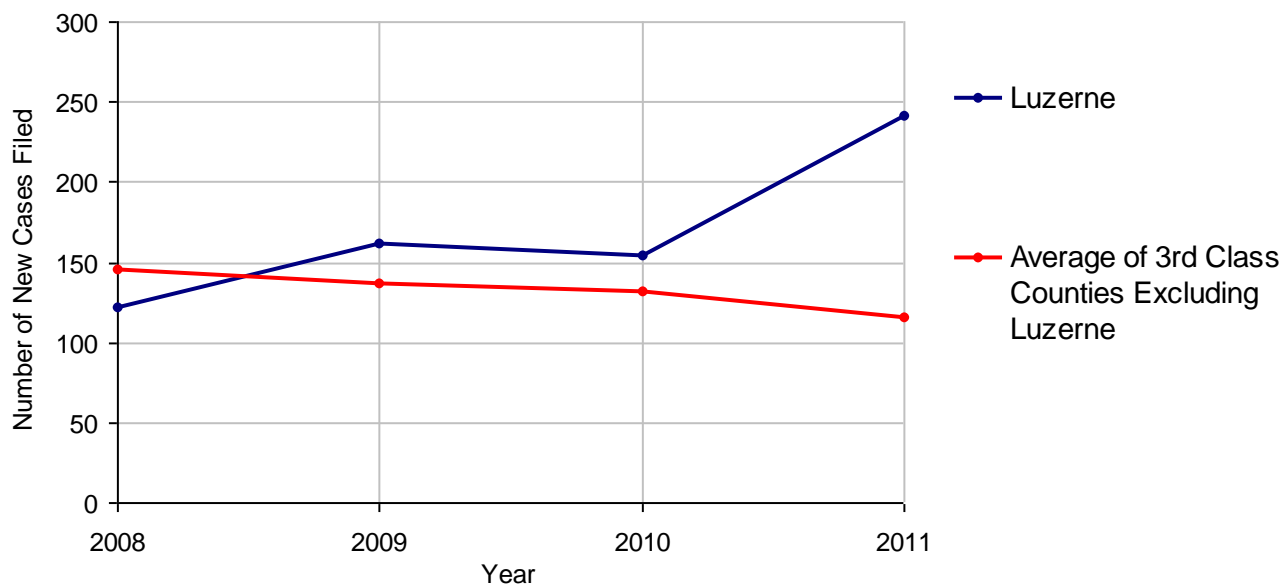
Luzerne County

2011 Population Estimate: 320,651
 Class of County: 3rd
 No. of Common Pleas Court Judgeships: 10



2011 Adoptions		No. of Cases	
Cases Pending 1/1/2011		3	
New Cases Filed in 2011		241	
Cases Available for Processing		244	
Processed By:			
Contested before a Judge	Granted	0	
	Denied	0	
Uncontested	Granted	153	100.0%
	Denied	0	
Other		0	
Cases Processed		153	100.0%
Cases Pending 12/31/2011		91	

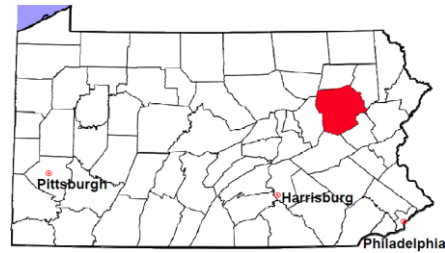
Adoptions New Cases Filed, 2008-2011



Note: Prior to 2008, each petition was counted as one new case, regardless of the number of children listed on the petition. Starting in 2008, each child listed on a petition is counted as a separate case. Therefore, statistics for the years since 2008 should not be compared to those for the years prior to 2008.

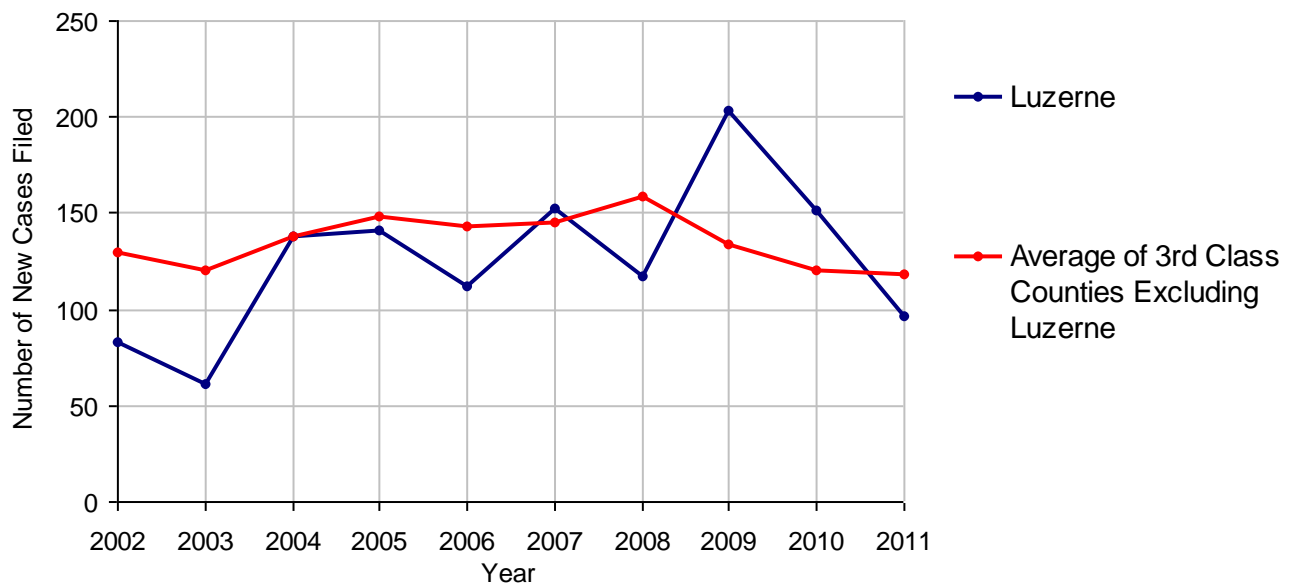
Luzerne County

2011 Population Estimate: 320,651
 Class of County: 3rd
 No. of Common Pleas Court Judgeships: 10



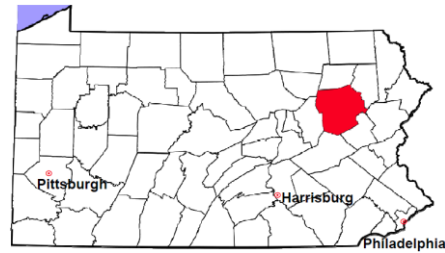
2011 Relinquishments/Terminations		No. of Cases
Cases Pending 1/1/2011		70
New Cases Filed in 2011		96
Cases Available for Processing		166
Processed By:		
Contested before a Judge	134	100.0%
Uncontested	0	
Other	0	
Cases Processed	134	100.0%
Cases Pending 12/31/2011		32

Relinquishments/Terminations New Cases Filed, 2002-2011



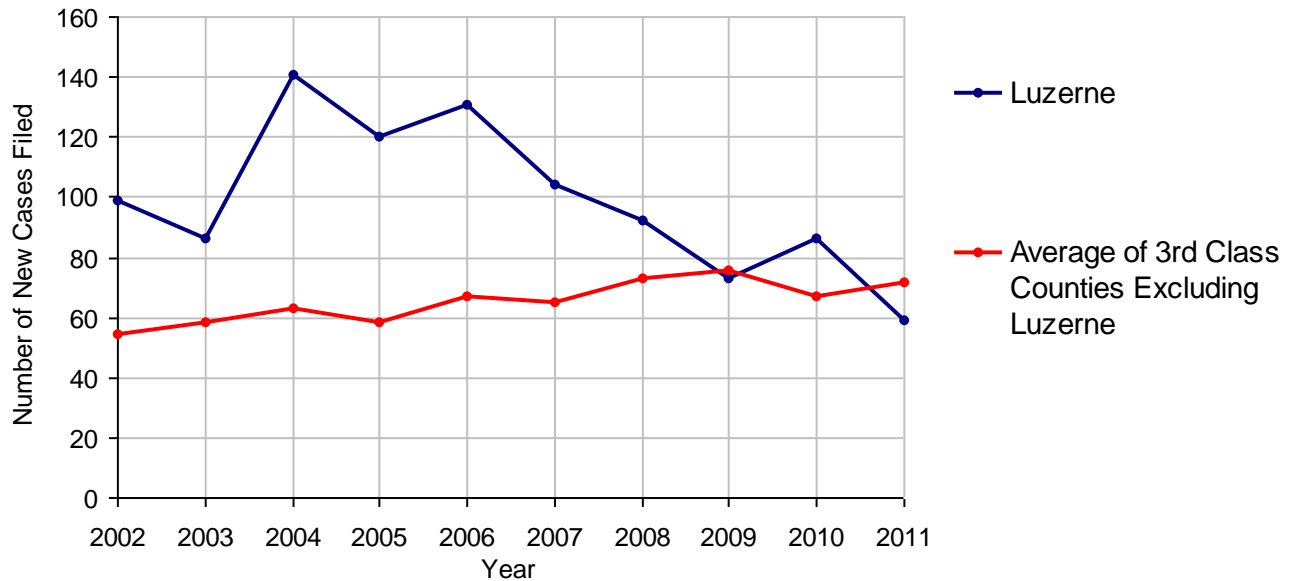
Luzerne County

2011 Population Estimate: 320,651
 Class of County: 3rd
 No. of Common Pleas Court Judgeships: 10



2011 Appointment of Guardians		No. of Cases
Cases Pending 1/1/2011		0
New Cases Filed in 2011		59
Cases Available for Processing		59
Processed By:		
Contested before a Judge		0
Uncontested	59	100.0%
Other		0
Cases Processed	59	100.0%
Cases Pending 12/31/2011		0

Appointment of Guardians New Cases Filed, 2002-2011

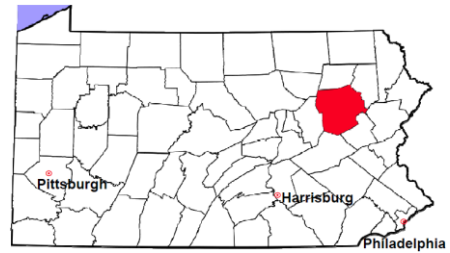


Luzerne County

2011 Population Estimate: 320,651

Class of County: 3rd

No. of Common Pleas Court Judgeships: 10



2011 Jury Activity and Performance Measures

A. Juror Days	11,665	
B. Number Sent to Voir Dire	4,259	
Voir Dire Attendance Rate (B/A * 100)		36.5%
C. Number of Jurors Selected	1,286	
Juror Selection Rate (C/B * 100)		30.2%

Note: In mid-2011, AOPC began utilizing the National Center for State Courts' Jury Managers' Toolbox for collecting jury data. This has resulted in limited jury performance measures being reported for 2011. Additional data will be available in 2012.