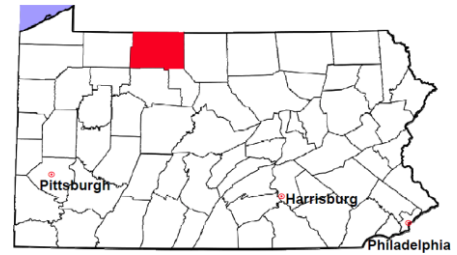


# McKean County

2011 Population Estimate: 43,222

Class of County: 6th

No. of Common Pleas Court Judgeships: 2



2011 Criminal	No. of Cases
---------------	--------------

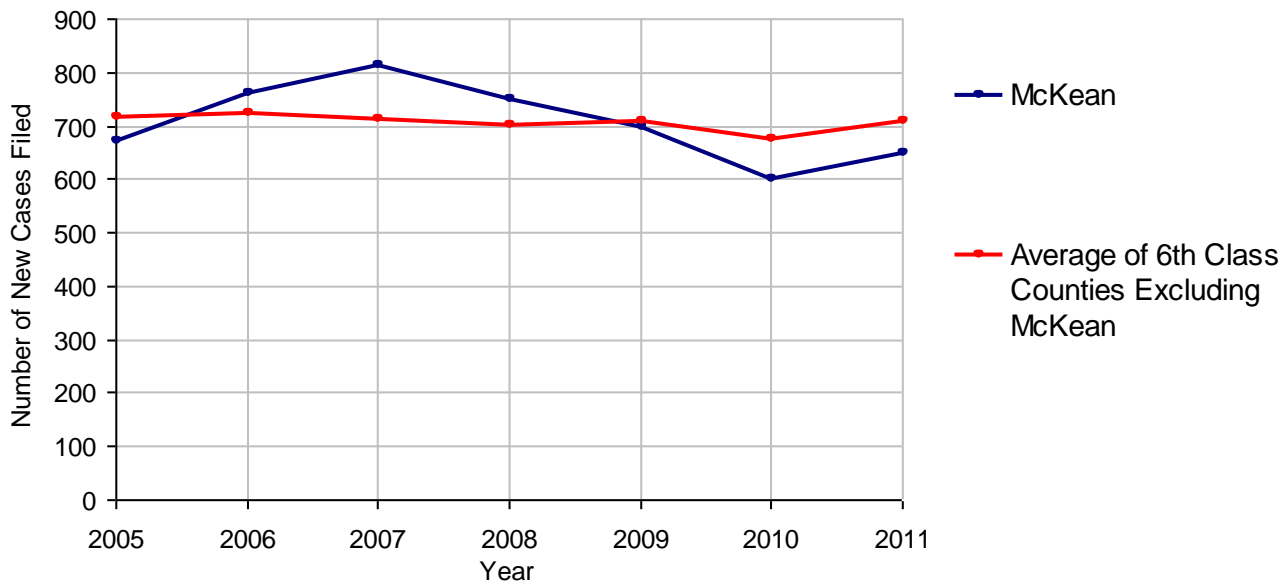
Cases Pending 1/1/2011	283
New Cases Filed in 2011	650
Reopened Cases	42
<b>Cases Available for Disposition</b>	<b>975</b>
<b>Disposed by:</b>	
Withdrawn/Dismissed	45 5.8%
ARD	68 8.8%
Guilty Plea	519 67.1%
Non-Jury Trial	18 2.3%
Jury Trial	20 2.6%
Inactive	20 2.6%
Other	84 10.9%
<b>Total Cases Disposed</b>	<b>774 100.0%</b>
<b>Cases Pending 12/31/2011</b>	<b>201</b>
Cases Awaiting Sentencing	40



Age of Pending Cases as of 12/31/2011		
0-60 Days	86	42.8%
61-120 Days	45	22.4%
121-180 Days	19	9.5%
181-240 Days	10	5.0%
241-300 Days	9	4.5%
301-360 Days	3	1.5%
Over 360 Days	29	14.4%
<b>Total</b>	<b>201</b>	<b>100.0%</b>

Data provided by CPCMS

**Criminal New Cases Filed, 2005-2011**

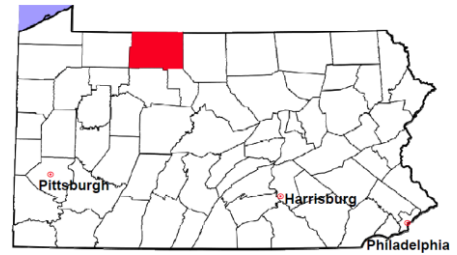


# McKean County

2011 Population Estimate: 43,222

Class of County: 6th

No. of Common Pleas Court Judgeships: 2



## 2011 Criminal - New Cases by Case Type



Case Type	Felony	Misdemeanor	Summary /Ungraded	Total
Person	33	80	0	113
Property	96	96	0	192
Drug	49	36	0	85
Weapon	4	2	0	6
Public Order	20	29	0	49
Motor Vehicle - DWI/DUI	0	202	0	202
Motor Vehicle - Other	0	2	0	2
Other	1	0	0	1
<b>Total</b>	<b>203</b>	<b>447</b>	<b>0</b>	<b>650</b>
	<b>31.2%</b>	<b>68.8%</b>		<b>100.0%</b>

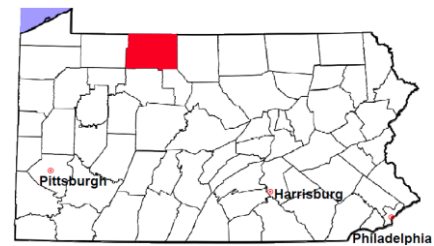
Data provided by CPCMS

# McKean County

2011 Population Estimate: 43,222

Class of County: 6th

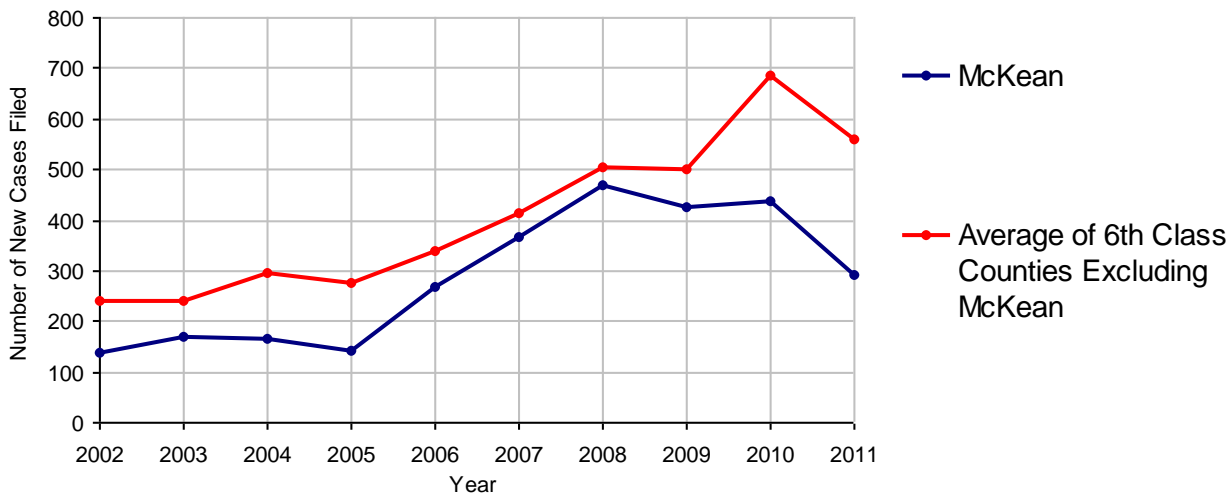
No. of Common Pleas Court Judgeships: 2



<b>2011 Civil</b>	<b>Civil Action</b>	<b>Other</b>	<b>Total</b>
Cases Pending 1/1/2011	134	94	228
Docketed Cases	191	99	290
Arbitration Appeals	0	0	0
Transferred In	0	0	0
Returned to Active	0	0	0
<b>Cases Available for Processing</b>	<b>325</b>	<b>193</b>	<b>518</b>
Disposed By:			
Default Judgments	108	28	136
Cases Decided by Arbitration Board	0	0	0
Dispositive Motions	0	0	0
Settlements	46	29	75
Moved to Inactive Status	0	0	0
Transferred/Withdrawn	1	0	1
Pa.R.J.A. 1901 Administrative Purge	0	0	0
Other	35	18	53
Jury Trial	0	0	0
Non-Jury Trial	0	0	0
<b>Total Cases Disposed</b>	<b>190</b>	<b>75</b>	<b>265</b>
<b>Cases Pending 12/31/2011</b>	<b>135</b>	<b>118</b>	<b>253</b>

Age of Pending Cases as of 12/31/2011 (Civil Action Only)		
0-6 months	54	40.0%
7-12 months	45	33.3%
13-18 months	34	25.2%
19-24 months	1	0.7%
25-30 months	0	
31-36 months	0	
37-42 months	1	0.7%
43-48 months	0	
49-54 months	0	
55-60 months	0	
61-66 months	0	
67-72 months	0	
Over 72 months	0	
<b>Total</b>	<b>135</b>	<b>100.0%</b>

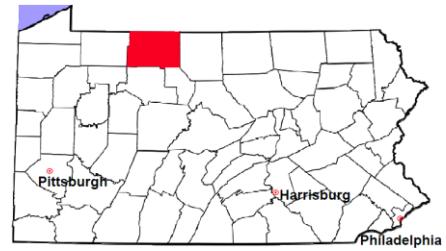
Docketed Cases, 2002-2011



Note: Prior to June 2010, docketed cases under the "Other" category were not reported. The reporting of these cases starting from June 2010 may contribute to an increase in docketed cases from 2009 to 2010.

# McKean County

2011 Population Estimate: 43,222  
 Class of County: 6th  
 No. of Common Pleas Court Judgeships: 2



## 2011 Civil - Docketed Cases Listed by Case Type

### TORT (does not include mass tort)

Intentional	1
Malicious Prosecution	1
Motor Vehicle	23
Nuisance	0
Premise Liability	1
Product Liability	1
Slander/Libel/Defamation	0
Other	8

### MASS TORT

Asbestos	0
Tobacco	0
Toxic Tort - DES	0
Toxic Tort - Implant	0
Toxic Waste	0
Other	0

### PROFESSIONAL LIABILITY

Dental	0
Legal	0
Medical Malpractice	2
Other	0

### CONTRACT

(does not include judgments)

Buyer Plaintiff	1
Debt Collection:	
Credit Card	97
Other	47
Employment Dispute:	
Discrimination	0
Other	8

### REAL PROPERTY

Ejectment*	9
Eminent Domain/ Condemnation*	2
Ground Rent	0
Landlord/Tenant Dispute	1
Mortgage Forclosures:	
Residential*	42
Commercial*	4
Partition of Real Property*	2
Quiet Title*	6
Other*	1

### CIVIL APPEALS

*Administrative Agencies*

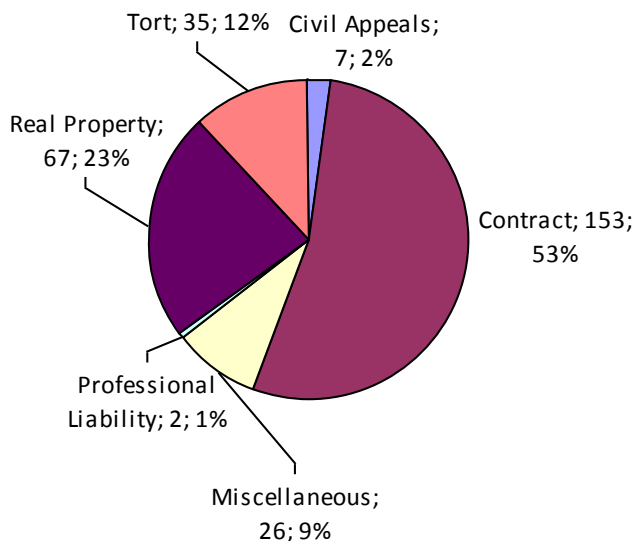
Board of Assessment*	0
Board of Elections*	0
Dept. of Transportation*	6
Zoning Board*	0
Statutory Appeal - Other*	0
Other*	1

### MISCELLANEOUS

Common Law/ Statutory Arbitration*	0
Declaratory Judgment*	5
Mandamus*	1
Non-Domestic Relations Restraining Order*	0
Quo Warranto*	0
Replevin*	1
Other*	19

**TOTAL DOCKETED CASES: 290**

\* Civil Other



### Of the Docketed Cases:

Pro Se Filings:	0
Class Action Suits:	0
MDJ Appeals:	18 6.2%

# McKean County

2011 Population Estimate: 43,222  
 Class of County: 6th  
 No. of Common Pleas Court Judgeships: 2



## 2011 Protection From Abuse

**No. of  
Petitions**

Cases Pending 1/1/2011	10
New Cases Filed in 2011	51

*Of these, Petitions Requesting Temporary Orders: 51 (100.0%)  
 Temporary Orders DENIED: 0 (0.0%), Temporary Orders GRANTED: 51 (100.0%)*

### Cases Available for Processing 61

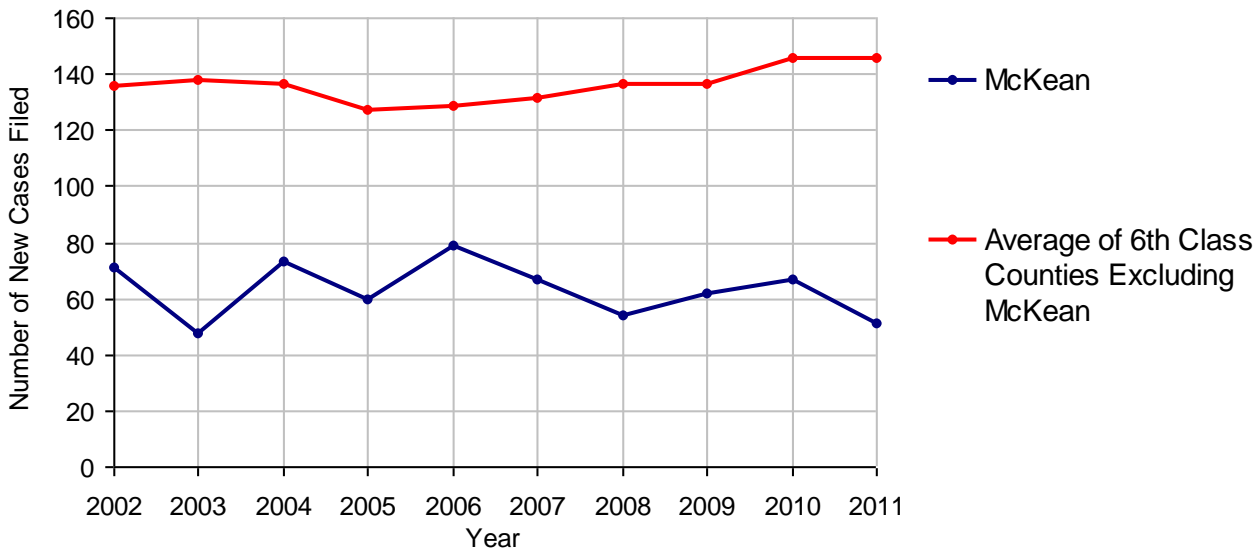
Processed By:

Temporary Order DENIED After Ex Parte Hearing and No Evidentiary Hearing Scheduled	0	
Temporary Order DISMISSED After Evidentiary Hearing and No Final Order Entered	10	16.4%
Final Order DENIED After Evidentiary Hearing Before a Judge	1	1.6%
Final Order GRANTED After Evidentiary Hearing Before a Judge	31	50.8%
Plaintiff Did Not Appear For Evidentiary Hearing	0	
Final Order by STIPULATION OR AGREEMENT Between the Parties	5	8.2%
Petition WITHDRAWN by Plaintiff	14	23.0%
TRANSFERRED to Another Jurisdiction	0	
DECEASED Party	0	
Other	0	

### Cases Processed 61 100.0%

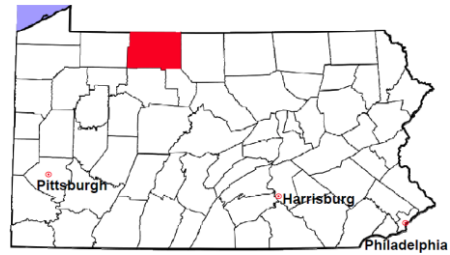
### Cases Pending 12/31/2011 0

**PFA New Cases Filed, 2002-2011**

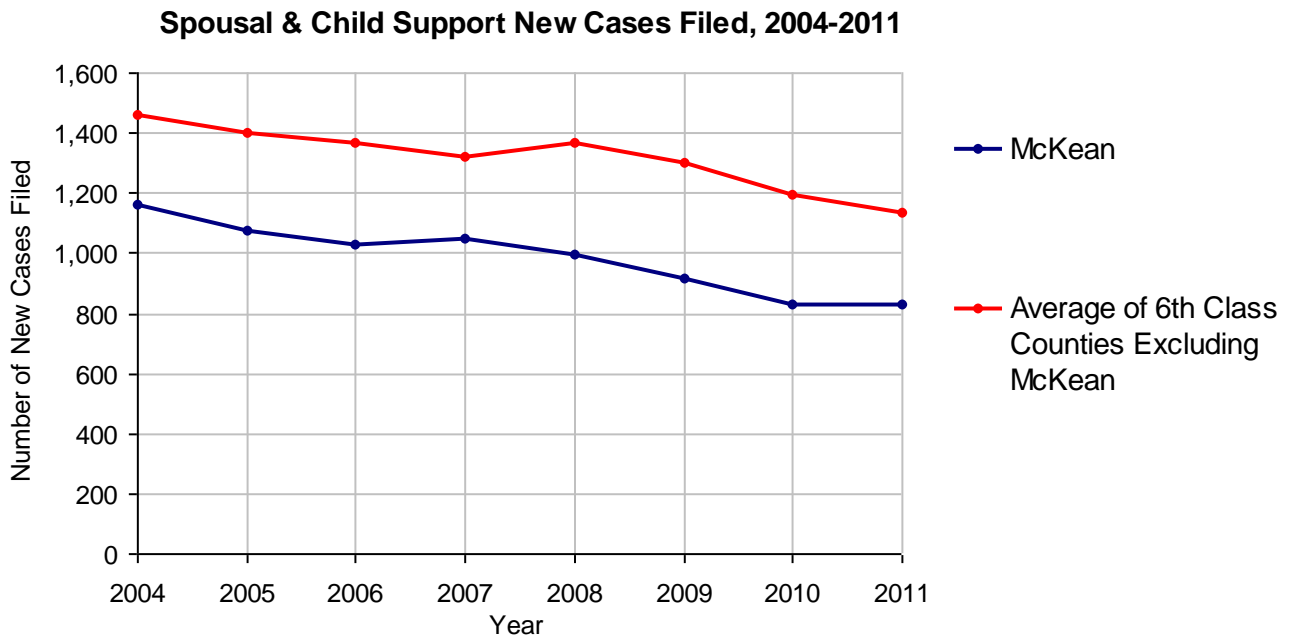


# McKean County

2011 Population Estimate: 43,222  
 Class of County: 6th  
 No. of Common Pleas Court Judgeships: 2



<b>2011 Spousal &amp; Child Support</b>	<b>No. of Petitions</b>	
Cases Pending 1/1/2011	164	
New Cases Filed in 2011	827	
Dockets Transferred In (+)	3	
Dockets Transferred Out (-)	8	
<b>Cases Available for Processing</b>	<b>986</b>	
Processed By:		
Judge	26	3.1%
Intake Officer	262	31.2%
Hearing Officer	551	65.7%
Other	0	
<b>Cases Processed</b>	<b>839</b>	<b>100.0%</b>
<b>Cases Pending 12/31/2011</b>	<b>147</b>	

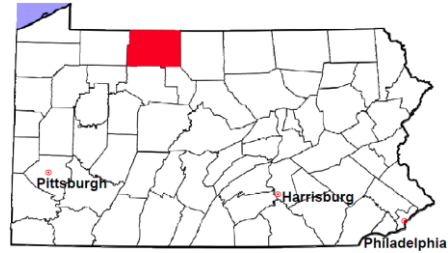


# McKean County

2011 Population Estimate: 43,222

Class of County: 6th

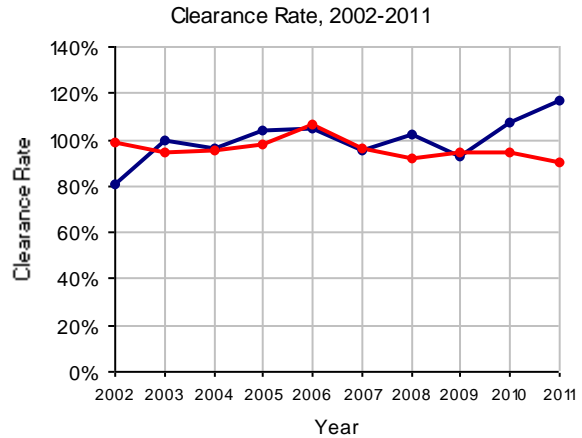
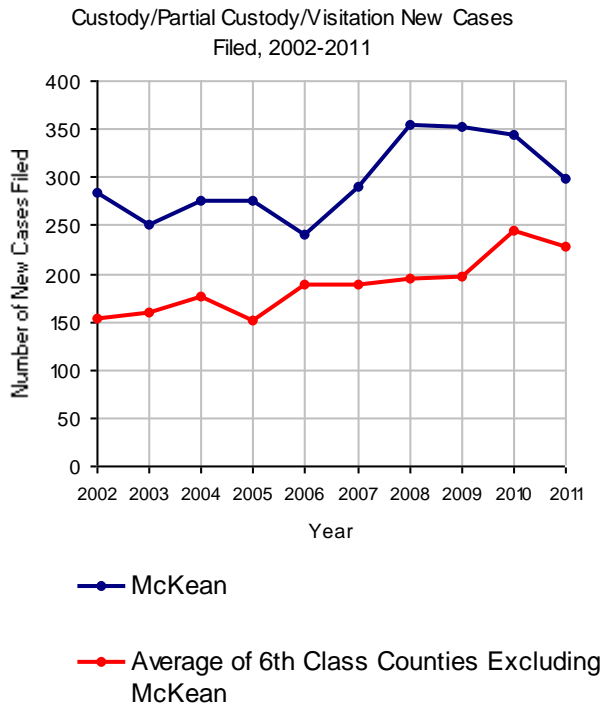
No. of Common Pleas Court Judgeships: 2



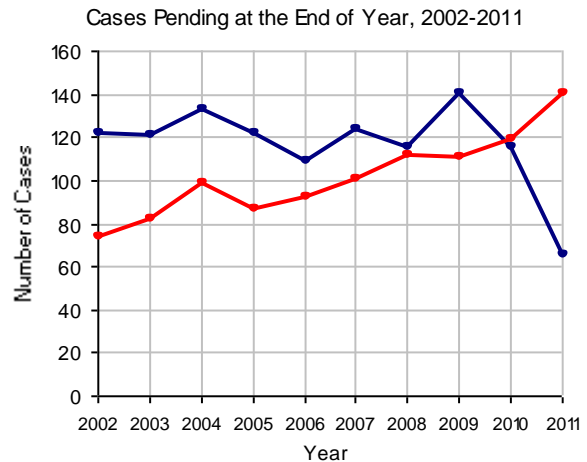
## 2011 Custody/Partial Custody/Visitation

No. of  
Petitions

Cases Pending 1/1/2011	116
New Cases Filed in 2011	298
<b>Cases Available for Processing</b>	<b>414</b>
Processed By:	
Judge	134 38.5%
Non-Judicial Officer	156 44.8%
Other	58 16.7%
<b>Cases Processed</b>	<b>348 100.0%</b>
<b>Cases Pending 12/31/2011</b>	<b>66</b>

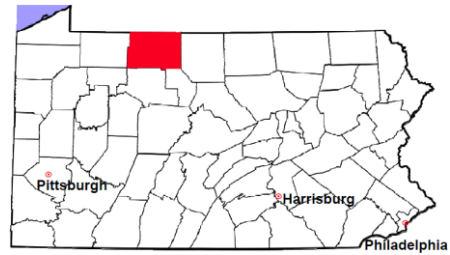


Note: Clearance Rate = Cases Processed / New Cases Filed



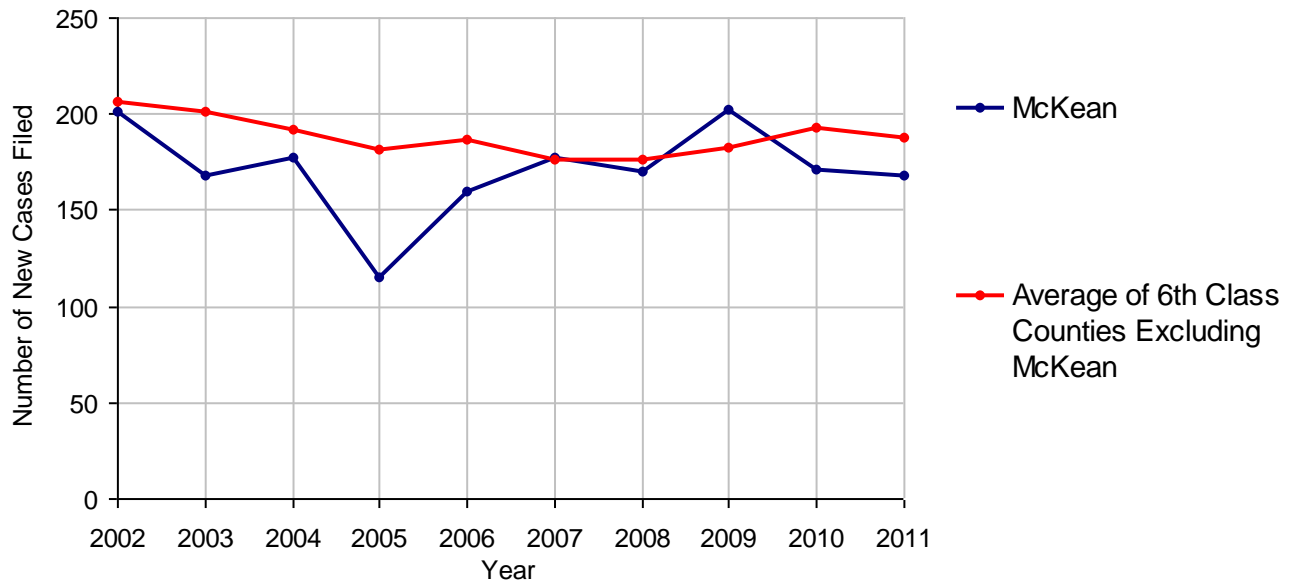
# McKean County

2011 Population Estimate: 43,222  
 Class of County: 6th  
 No. of Common Pleas Court Judgeships: 2



<b>2011 Divorce</b>	<b>No. of Petitions</b>	
Cases Pending 1/1/2011	141	
New Cases Filed in 2011	168	
<b>Cases Available for Processing</b>	<b>309</b>	
Processed By:		
Contested Before a Judge	0	
Contested Before a Master	41	22.8%
Uncontested	130	72.2%
Other	9	5.0%
<b>Cases Processed</b>	<b>180</b>	<b>100.0%</b>
<b>Cases Pending 12/31/2011</b>	<b>129</b>	

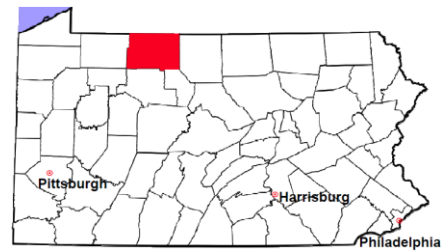
**Divorce New Cases Filed, 2002-2011**





# McKean County

2011 Population Estimate: 43,222  
 Class of County: 6th  
 No. of Common Pleas Court Judgeships: 2



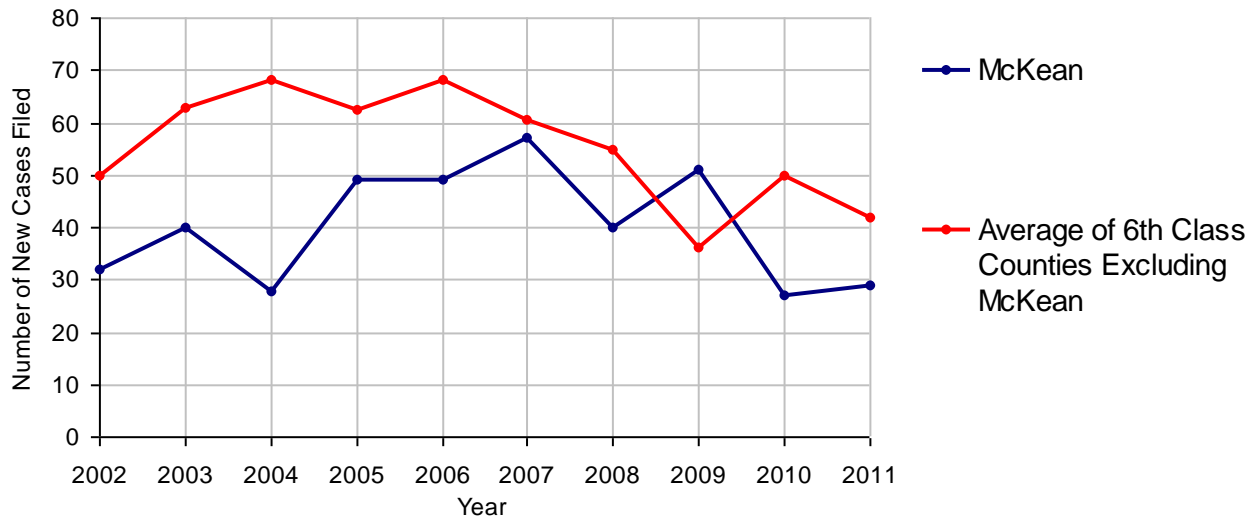
## 2011 Juvenile Dependency - Active Dependent Inventory



	Abuse/ Neglect	Status Offenses	Total
Cases Pending 1/1/2011	7	0	7
New Petitions Filed in 2011	29	0	29
Other	0	0	0
<b>Total Petitions Available for Processing</b>	<b>36</b>	<b>0</b>	<b>36</b>
Processed by:			
Adjudicated Dependent			
Judge	20	0	20
Master	0	0	0
Adjudicated NOT Dependent			
Judge	1	0	1
Master	0	0	0
Withdrawn/Dismissed/Inactive	0	0	0
Other	13	0	13
<b>Total Petitions Processed</b>	<b>34</b>	<b>0</b>	<b>34</b>
<b>Cases Pending 12/31/2011</b>	<b>2</b>	<b>0</b>	<b>2</b>

Data provided by CPCMS

Abuse/Neglect and Status Offenses New Cases Filed, 2002-2011



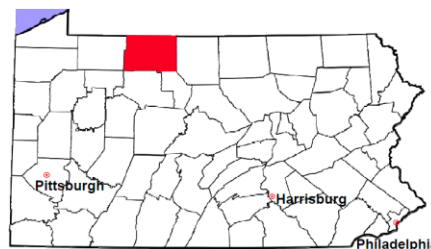
Note: Dependency data for 2002-2010 were collected manually. Dependency data for 2011 were provided by CPCMS.

# McKean County

2011 Population Estimate: 43,222

Class of County: 6th

No. of Common Pleas Court Judgeships: 2



## 2011 Juvenile Dependency - Adjudicated Dependent Inventory



	Abuse/ Neglect	Status Offenses	Total	
Cases Pending 1/1/2011	72	0	72	
New Adjudicated Dependent Cases	20	0	20	
Other	8	0	8	
<b>Total Adjudicated Dependent Cases</b>	<b>100</b>	<b>0</b>	<b>100</b>	
<b><u>Court Supervision Terminated:</u></b>				
Family Reunification	1	0	1	5.6%
Adoption	0	0	0	
Placement with a Relative/Guardian	2	0	2	11.1%
Aged Out	0	0	0	
Other Permanency Outcomes*	0	0	0	
Other**	15	0	15	83.3%
<b>Total Adjudicated Dependent Cases Terminated</b>	<b>18</b>	<b>0</b>	<b>18</b>	<b>100.0%</b>
<b>Cases Pending 12/31/2011</b>	<b>82</b>	<b>0</b>	<b>82</b>	

Data provided by CPCMS

\* Other Permanency Outcomes include: adjudicated delinquent, death due to natural causes, emancipation, permanent living arrangement, and parent has come forward.

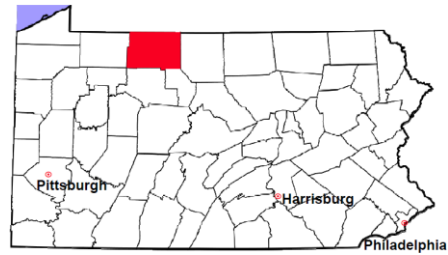
\*\* Other includes cases where Court Supervision is terminated due to transfer out of jurisdiction, withdrawal and administrative closures.

# McKean County

2011 Population Estimate: 43,222

Class of County: 6th

No. of Common Pleas Court Judgeships: 2

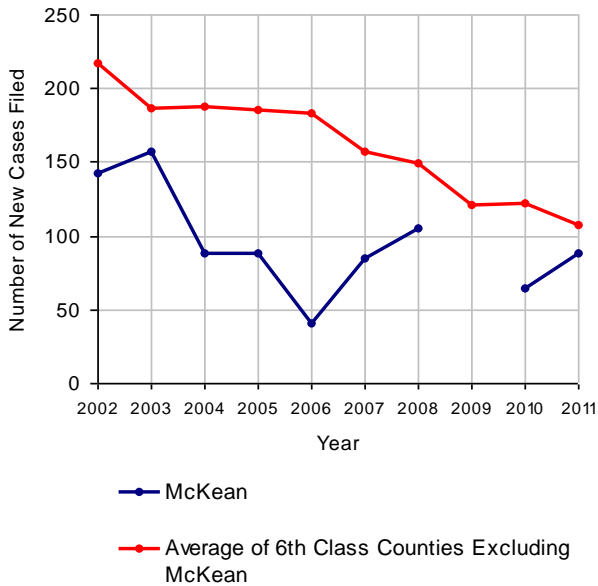


## 2011 Juvenile Delinquency

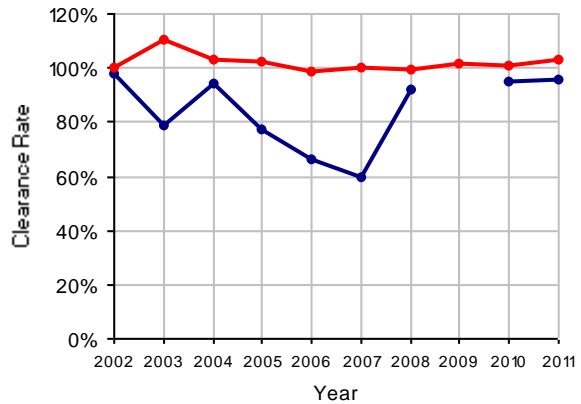
**No. of Cases**

Cases Pending 1/1/2011	18
New Cases Filed in 2011	88
<b>Cases Available for Processing</b>	<b>106</b>
Processed By:	
Judge	27 32.1%
<b>Non-Judicial Officer</b>	<b>40 47.6%</b>
Other	17 20.2%
<b>Cases Processed</b>	<b>84 100.0%</b>
<b>Cases Pending 12/31/2011</b>	<b>22</b>

Juvenile Delinquency New Cases Filed, 2002-2011

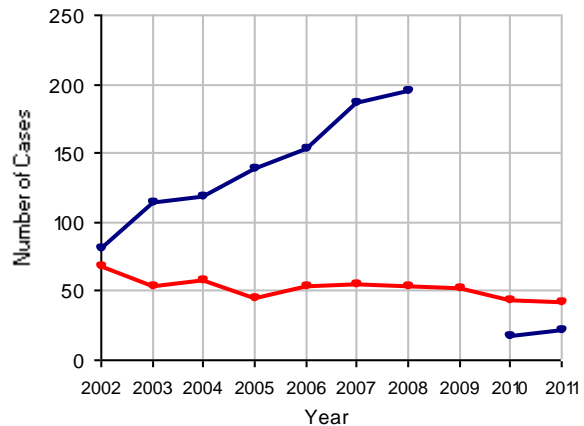


Clearance Rate, 2002-2011



Note: Clearance Rate = Cases Processed / New Cases Filed

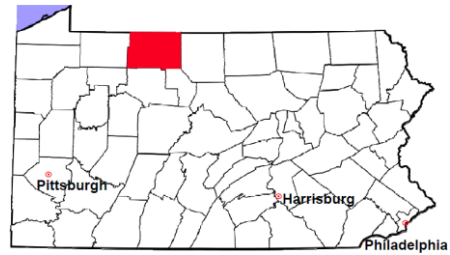
Cases Pending at the End of Year, 2002-2011



Note: Data for 2009 are not available.

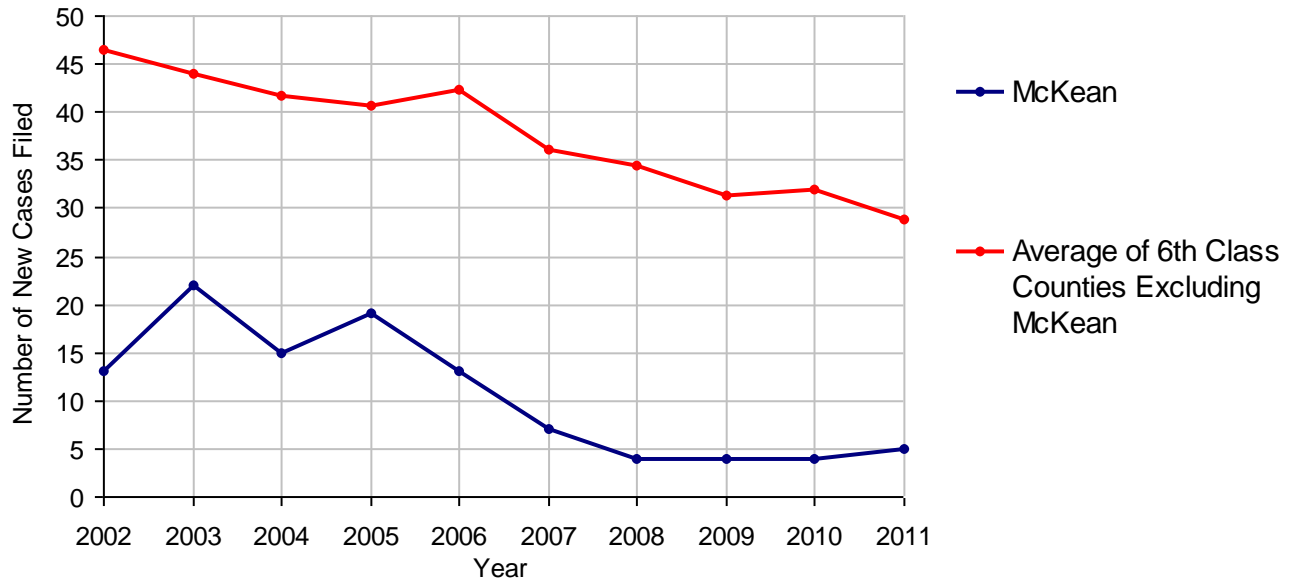
# McKean County

2011 Population Estimate: 43,222  
 Class of County: 6th  
 No. of Common Pleas Court Judgeships: 2



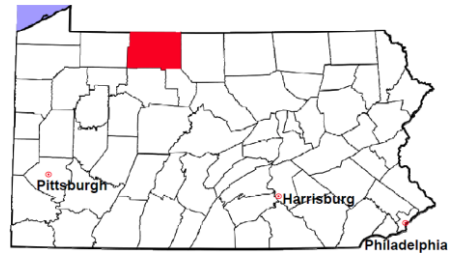
<b>2011 Accounts</b>	<b>No. of Cases</b>
Cases Pending 1/1/2011	12
New Cases Filed in 2011	5
<b>Cases Available for Processing</b>	<b>17</b>
Processed By:	
Contested before a Judge	0
Contested before a Non-judicial Officer	0
Uncontested	3 100.0%
Other	0
<b>Cases Processed</b>	<b>3 100.0%</b>
<b>Cases Pending 12/31/2011</b>	<b>14</b>

**Accounts New Cases Filed, 2002-2011**



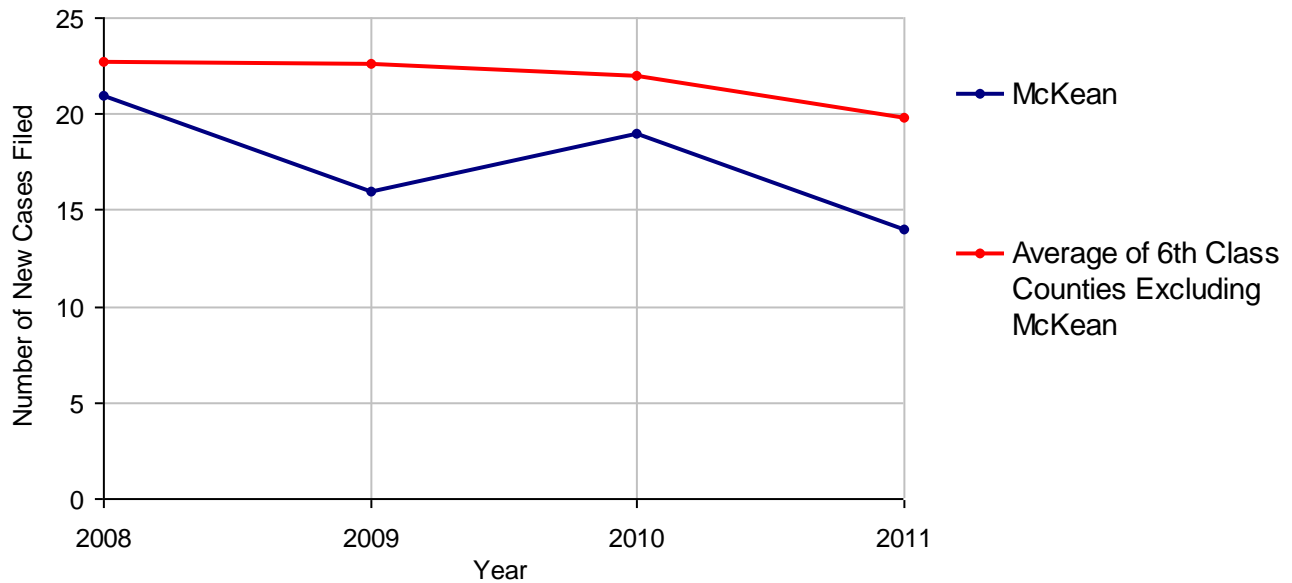
# McKean County

2011 Population Estimate: 43,222  
 Class of County: 6th  
 No. of Common Pleas Court Judgeships: 2



<b>2011 Adoptions</b>		<b>No. of Cases</b>	
Cases Pending 1/1/2011		25	
New Cases Filed in 2011		14	
<b>Cases Available for Processing</b>		<b>39</b>	
Processed By:			
Contested before a Judge	Granted	0	
	Denied	0	
Uncontested	Granted	15	100.0%
	Denied	0	
Other		0	
<b>Cases Processed</b>		<b>15</b>	<b>100.0%</b>
<b>Cases Pending 12/31/2011</b>		<b>24</b>	

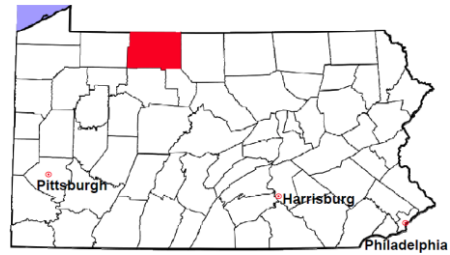
**Adoptions New Cases Filed, 2008-2011**



Note: Prior to 2008, each petition was counted as one new case, regardless of the number of children listed on the petition. Starting in 2008, each child listed on a petition is counted as a separate case. Therefore, statistics for the years since 2008 should not be compared to those for the years prior to 2008.

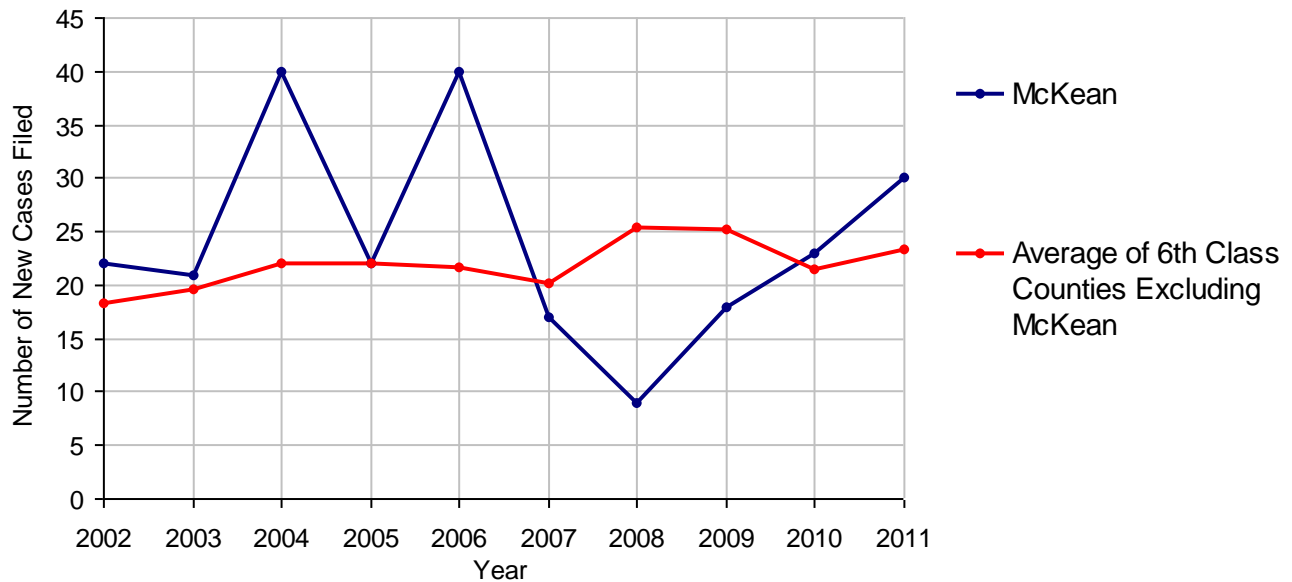
# McKean County

2011 Population Estimate: 43,222  
 Class of County: 6th  
 No. of Common Pleas Court Judgeships: 2



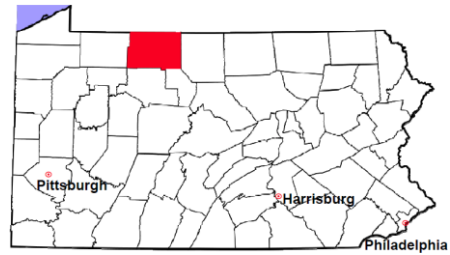
2011 Relinquishments/Terminations	No. of Cases
Cases Pending 1/1/2011	54
New Cases Filed in 2011	30
<b>Cases Available for Processing</b>	<b>84</b>
Processed By:	
Contested before a Judge	0
Uncontested	23 100.0%
Other	0
<b>Cases Processed</b>	<b>23 100.0%</b>
<b>Cases Pending 12/31/2011</b>	<b>61</b>

Relinquishments/Terminations New Cases Filed, 2002-2011



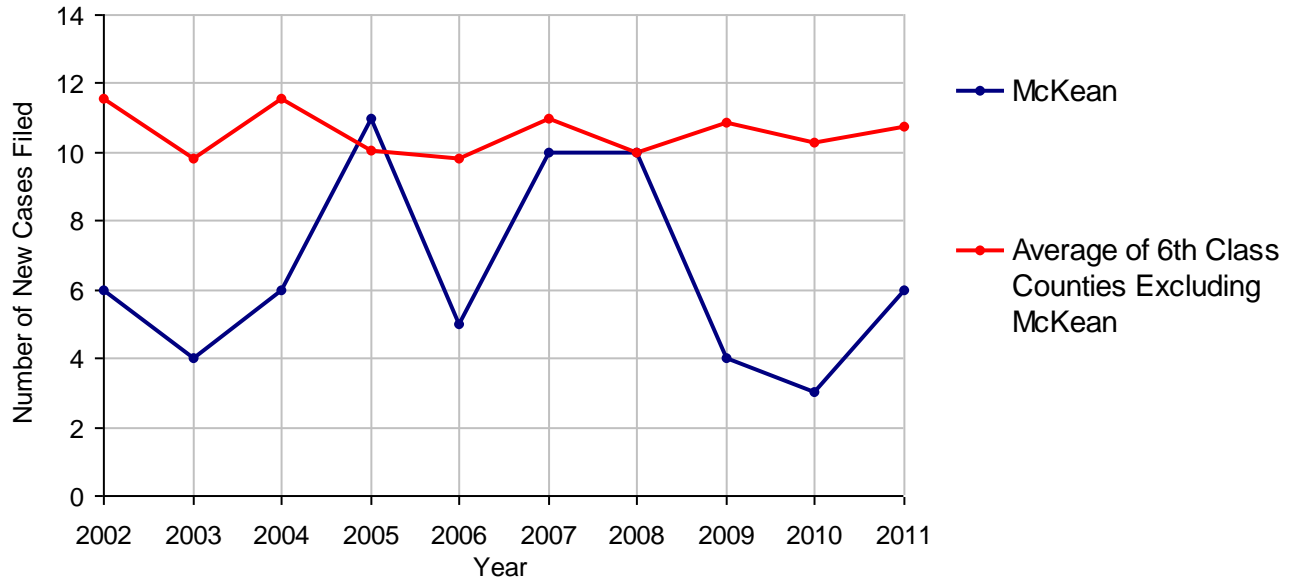
# McKean County

2011 Population Estimate: 43,222  
 Class of County: 6th  
 No. of Common Pleas Court Judgeships: 2



<b>2011 Appointment of Guardians</b>		<b>No. of Cases</b>
Cases Pending 1/1/2011		14
New Cases Filed in 2011		6
<b>Cases Available for Processing</b>		<b>20</b>
Processed By:		
Contested before a Judge		0
Uncontested	3	60.0%
Other	2	40.0%
<b>Cases Processed</b>	<b>5</b>	<b>100.0%</b>
<b>Cases Pending 12/31/2011</b>		<b>15</b>

**Appointment of Guardians New Cases Filed, 2002-2011**

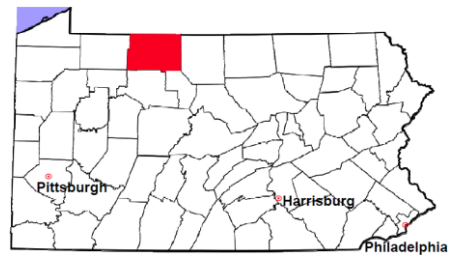


# McKean County

2011 Population Estimate: 43,222

Class of County: 6th

No. of Common Pleas Court Judgeships: 2



---

## 2011 Jury Activity and Performance Measures

---

A. Juror Days	1,402	
B. Number Sent to Voir Dire	1,402	
Voir Dire Attendance Rate (B/A * 100)		100.0%
C. Number of Jurors Selected	290	
Juror Selection Rate (C/B * 100)		20.7%

---

Note: In mid-2011, AOPC began utilizing the National Center for State Courts' Jury Managers' Toolbox for collecting jury data. This has resulted in limited jury performance measures being reported for 2011. Additional data will be available in 2012.