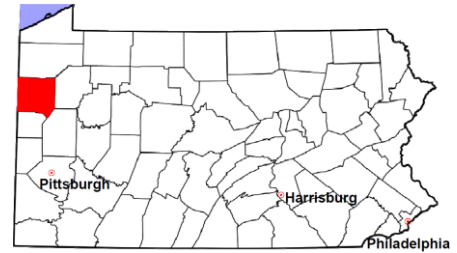


Mercer County

2011 Population Estimate: 116,205
 Class of County: 5th
 No. of Common Pleas Court Judgeships: 4



2011 Criminal No. of Cases

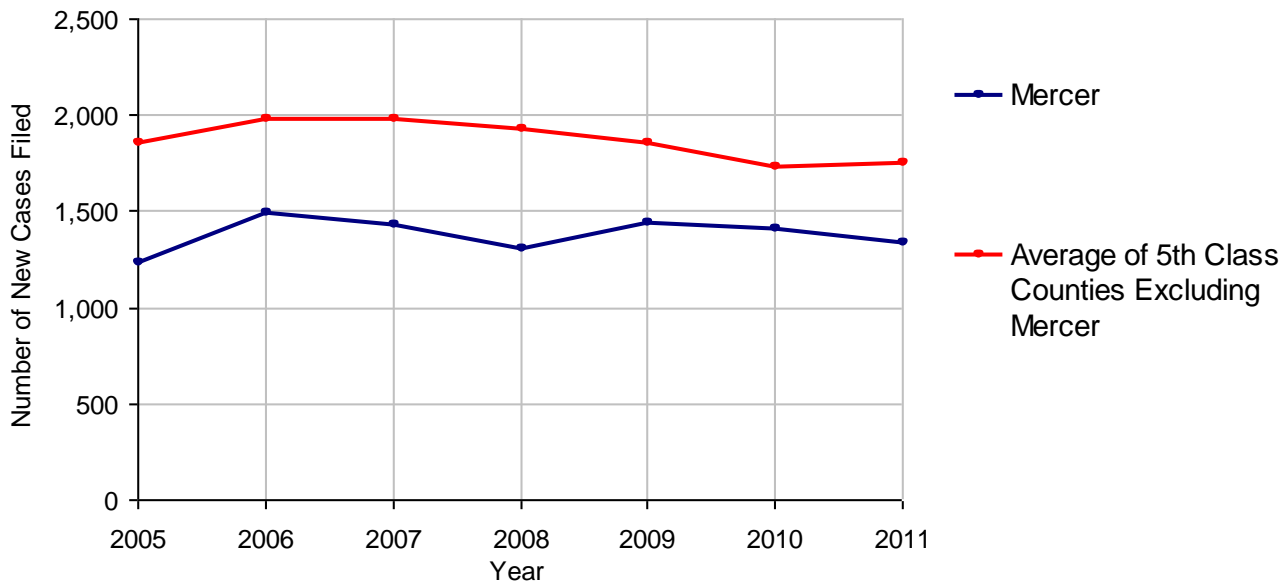
Cases Pending 1/1/2011	876
New Cases Filed in 2011	1,347
Reopened Cases	92
Cases Available for Disposition	2,315
Disposed by:	
Withdrawn/Dismissed	242 16.4%
ARD	283 19.2%
Guilty Plea	833 56.4%
Non-Jury Trial	9 0.6%
Jury Trial	15 1.0%
Inactive	31 2.1%
Other	63 4.3%
Total Cases Disposed	1,476 100.0%
Cases Pending 12/31/2011	839
Cases Awaiting Sentencing	126



Age Range	Count	Percentage
0-60 Days	233	27.8%
61-120 Days	214	25.5%
121-180 Days	201	24.0%
181-240 Days	84	10.0%
241-300 Days	29	3.5%
301-360 Days	31	3.7%
Over 360 Days	47	5.6%
Total	839	100.0%

Data provided by CPCMS

Criminal New Cases Filed, 2005-2011

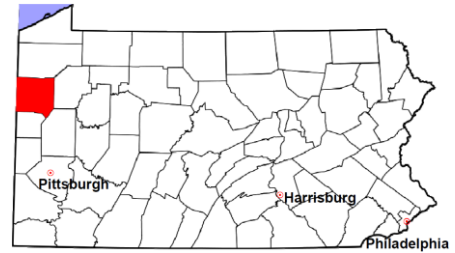


Mercer County

2011 Population Estimate: 116,205

Class of County: 5th

No. of Common Pleas Court Judgeships: 4



2011 Criminal - New Cases by Case Type

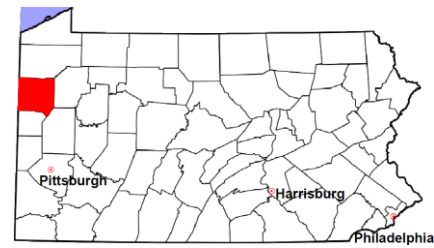


Case Type	Felony	Misdemeanor	Summary /Ungraded	Total
Person	118	82	0	200
Property	324	181	3	508
Drug	40	88	1	129
Weapon	18	5	0	23
Public Order	51	66	0	117
Motor Vehicle - DWI/DUI	0	368	0	368
Motor Vehicle - Other	0	2	0	2
Other	0	0	0	0
Total	551	792	4	1,347
	40.9%	58.8%	0.3%	100.0%

Data provided by CPCMS

Mercer County

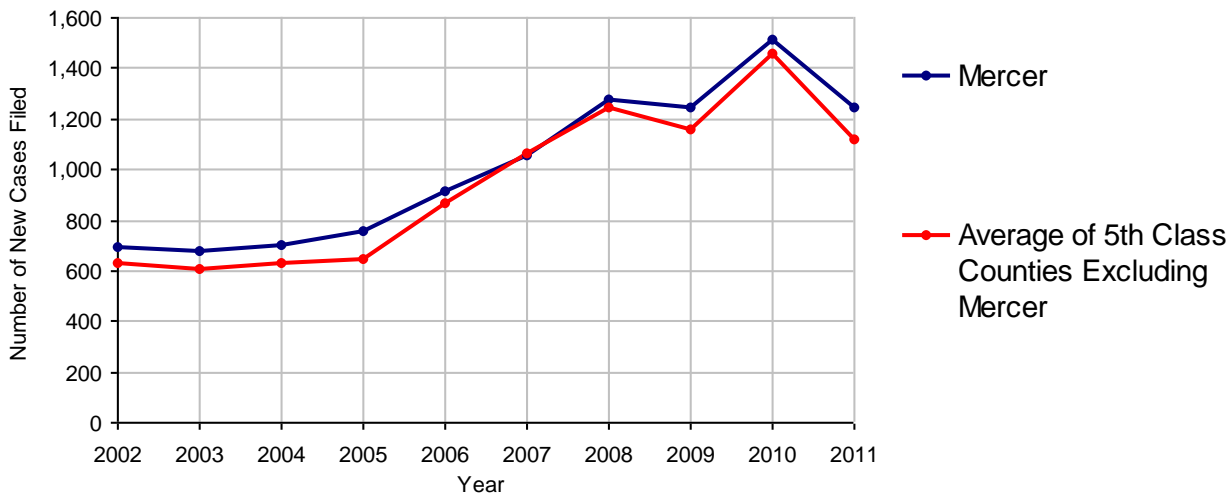
2011 Population Estimate: 116,205
 Class of County: 5th
 No. of Common Pleas Court Judgeships: 4



2011 Civil	Civil Action	Other	Total
Cases Pending 1/1/2011	474	268	742
Docketed Cases	860	385	1,245
Arbitration Appeals	0	0	0
Transferred In	0	0	0
Returned to Active	0	0	0
Cases Available for Processing	1,334	653	1,987
Disposed By:			
Default Judgments	468	180	648
Cases Decided by Arbitration Board	0	0	0
Dispositive Motions	4	16	20
Settlements	199	73	272
Moved to Inactive Status	0	0	0
Transferred/Withdrawn	5	2	7
Pa.R.J.A. 1901 Administrative Purge	0	0	0
Other	0	0	0
Jury Trial	0	0	0
Non-Jury Trial	0	0	0
Total Cases Disposed	676	271	947
Cases Pending 12/31/2011	658	382	1,040

Age of Pending Cases as of 12/31/2011 (Civil Action Only)		
0-6 months	329	50.0%
7-12 months	173	26.3%
13-18 months	155	23.6%
19-24 months	1	0.2%
25-30 months	0	
31-36 months	0	
37-42 months	0	
43-48 months	0	
49-54 months	0	
55-60 months	0	
61-66 months	0	
67-72 months	0	
Over 72 months	0	
Total	658	100.0%

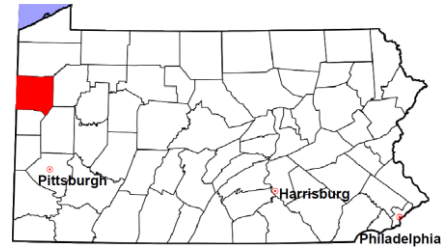
Docketed Cases, 2002-2011



Note: Prior to June 2010, docketed cases under the "Other" category were not reported. The reporting of these cases starting from June 2010 may contribute to an increase in docketed cases from 2009 to 2010.

Mercer County

2011 Population Estimate: 116,205
 Class of County: 5th
 No. of Common Pleas Court Judgeships: 4



2011 Civil - Docketed Cases Listed by Case Type

TORT (does not include mass tort)

Intentional	3
Malicious Prosecution	0
Motor Vehicle	83
Nuisance	1
Premise Liability	25
Product Liability	0
Slander/Libel/Defamation	2
Other	34

MASS TORT

Asbestos	0
Tobacco	0
Toxic Tort - DES	0
Toxic Tort - Implant	0
Toxic Waste	0
Other	1

PROFESSIONAL LIABILITY

Dental	0
Legal	0
Medical Malpractice	17
Other	2

CONTRACT

(does not include judgments)

Buyer Plaintiff	8
Debt Collection:	
Credit Card	339
Other	285
Employment Dispute:	
Discrimination	1
Other	3
Other	41

REAL PROPERTY

Ejectment*	35
Eminent Domain/ Condemnation*	6
Ground Rent	0
Landlord/Tenant Dispute	15
Mortgage Forclosures:	
Residential*	212
Commercial*	18
Partition of Real Property*	3
Quiet Title*	15
Other*	6

CIVIL APPEALS

Administrative Agencies

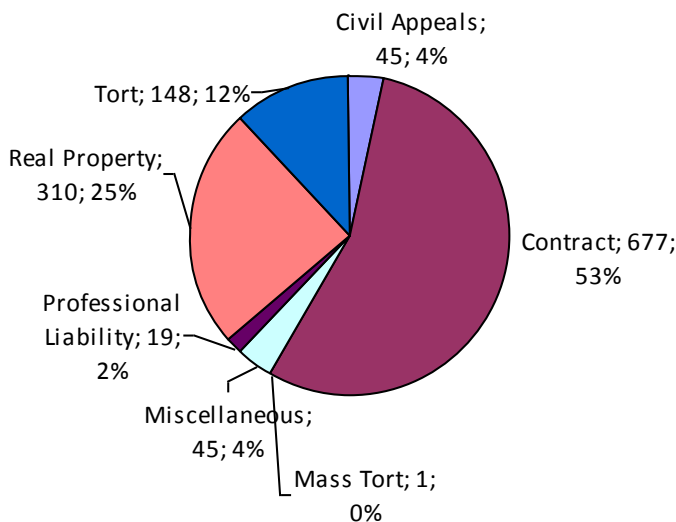
Board of Assessment*	7
Board of Elections*	0
Dept. of Transportation*	24
Zoning Board*	2
Statutory Appeal - Other*	2
Other*	10

MISCELLANEOUS

Common Law/ Statutory Arbitration*	0
Declaratory Judgment*	0
Mandamus*	1
Non-Domestic Relations Restraining Order*	0
Quo Warranto*	0
Replevin*	5
Other*	39

TOTAL DOCKETED CASES:
1,245

* Civil Other



Of the Docketed Cases:

Pro Se Filings:	24	1.9%
Class Action Suits:	7	0.6%
MDJ Appeals:	65	5.2%

Mercer County

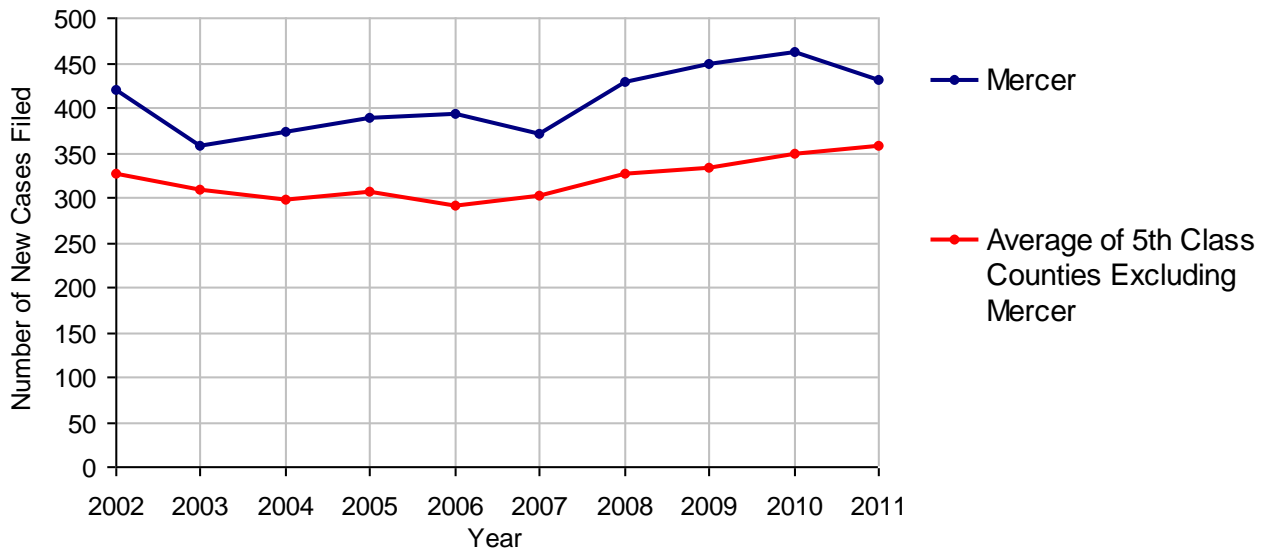
2011 Population Estimate: 116,205
 Class of County: 5th
 No. of Common Pleas Court Judgeships: 4



2011 Protection From Abuse

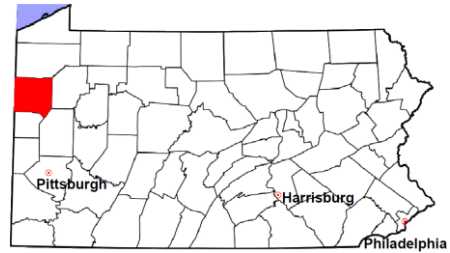
	No. of Petitions
Cases Pending 1/1/2011	15
New Cases Filed in 2011	432
<i>Of these, Petitions Requesting Temporary Orders: 432 (100.0%)</i>	
<i>Temporary Orders DENIED: 40 (9.3%), Temporary Orders GRANTED: 392 (90.7%)</i>	
Cases Available for Processing	447
Processed By:	
Temporary Order DENIED After Ex Parte Hearing and No Evidentiary Hearing Scheduled	3 0.7%
Temporary Order DISMISSED After Evidentiary Hearing and No Final Order Entered	0
Final Order DENIED After Evidentiary Hearing Before a Judge	45 10.5%
Final Order GRANTED After Evidentiary Hearing Before a Judge	51 11.9%
Plaintiff Did Not Appear For Evidentiary Hearing	42 9.8%
Final Order by STIPULATION OR AGREEMENT Between the Parties	117 27.3%
Petition WITHDRAWN by Plaintiff	168 39.3%
TRANSFERRED to Another Jurisdiction	0
DECEASED Party	0
Other	2 0.5%
Cases Processed	428 100.0%
Cases Pending 12/31/2011	19

PFA New Cases Filed, 2002-2011

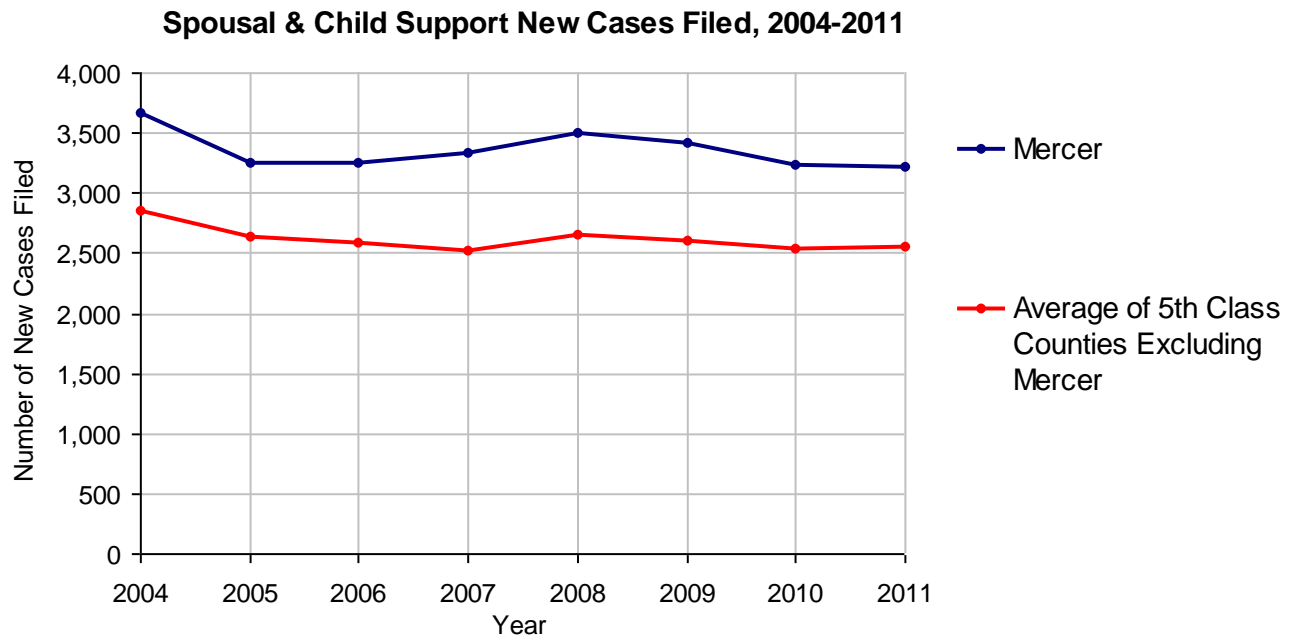


Mercer County

2011 Population Estimate: 116,205
 Class of County: 5th
 No. of Common Pleas Court Judgeships: 4



2011 Spousal & Child Support	No. of Petitions	
Cases Pending 1/1/2011	557	
New Cases Filed in 2011	3,223	
Dockets Transferred In (+)	18	
Dockets Transferred Out (-)	18	
Cases Available for Processing	3,780	
Processed By:		
Judge	149	4.9%
Intake Officer	2,908	95.1%
Hearing Officer	0	
Other	0	
Cases Processed	3,057	100.0%
Cases Pending 12/31/2011	723	

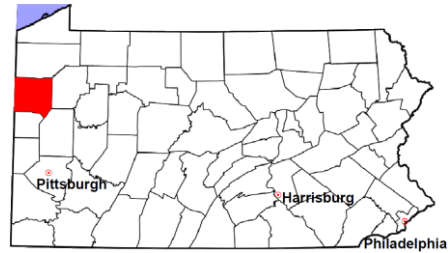


Mercer County

2011 Population Estimate: 116,205

Class of County: 5th

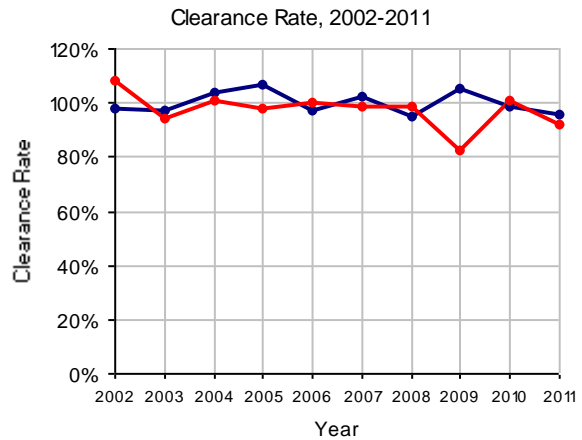
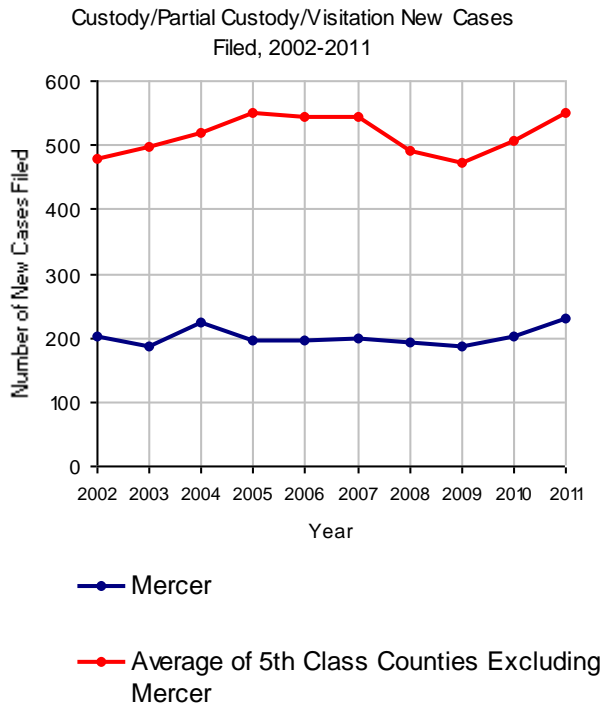
No. of Common Pleas Court Judgeships: 4



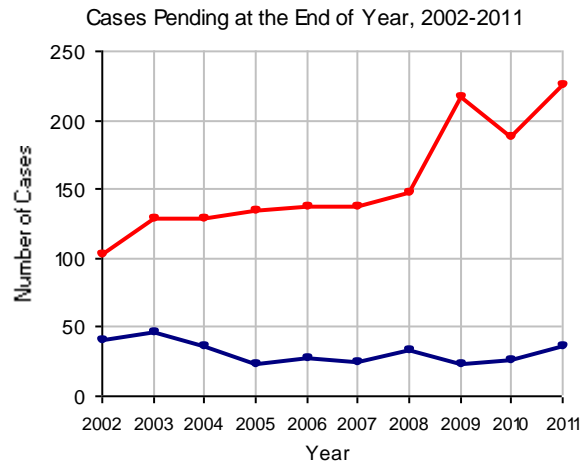
2011 Custody/Partial Custody/Visitation

No. of
Petitions

Cases Pending 1/1/2011	26
New Cases Filed in 2011	229
Cases Available for Processing	255
Processed By:	
Judge	101 46.1%
Non-Judicial Officer	106 48.4%
Other	12 5.5%
Cases Processed	219 100.0%
Cases Pending 12/31/2011	36

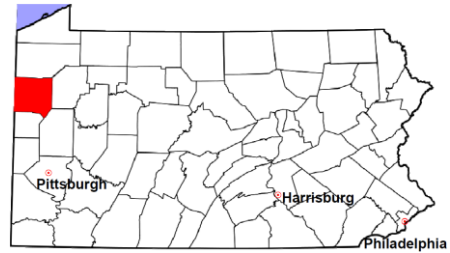


Note: Clearance Rate = Cases Processed / New Cases Filed



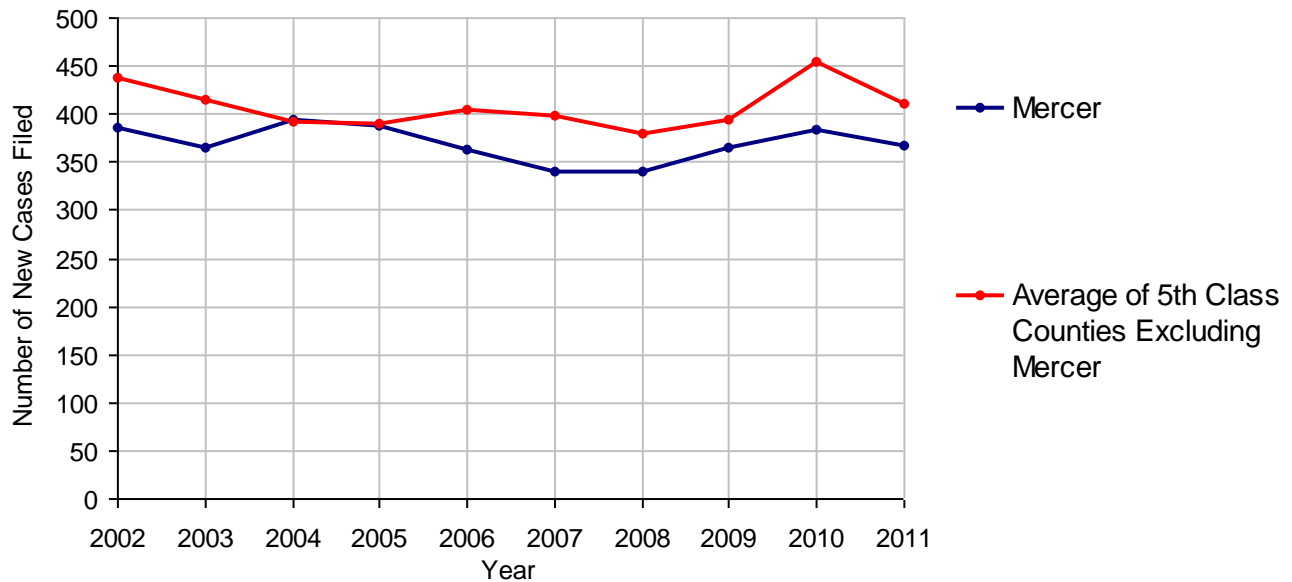
Mercer County

2011 Population Estimate: 116,205
 Class of County: 5th
 No. of Common Pleas Court Judgeships: 4



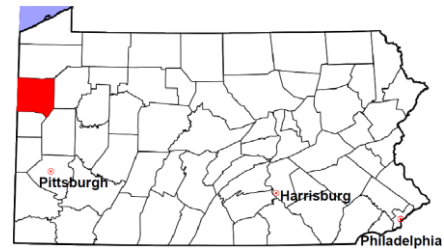
2011 Divorce	No. of Petitions	
Cases Pending 1/1/2011	522	
New Cases Filed in 2011	367	
Cases Available for Processing	889	
Processed By:		
Contested Before a Judge	1	0.3%
Contested Before a Master	37	9.5%
Uncontested	304	78.1%
Other	47	12.1%
Cases Processed	389	100.0%
Cases Pending 12/31/2011	500	

Divorce New Cases Filed, 2002-2011



Mercer County

2011 Population Estimate: 116,205
 Class of County: 5th
 No. of Common Pleas Court Judgeships: 4



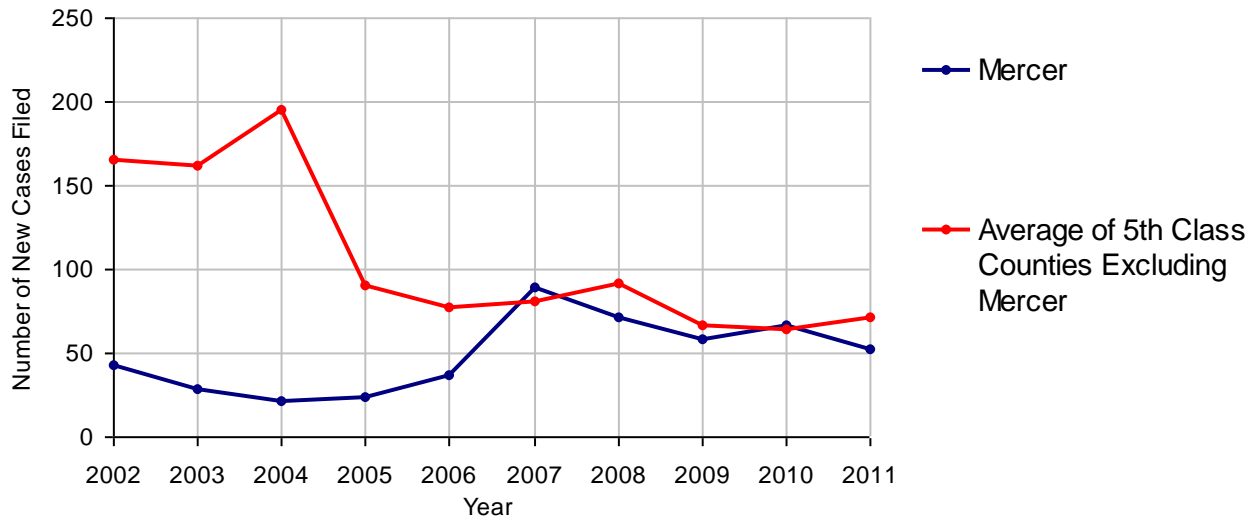
2011 Juvenile Dependency - Active Dependent Inventory



	Abuse/ Neglect	Status Offenses	Total
Cases Pending 1/1/2011	6	0	6
New Petitions Filed in 2011	39	13	52
Other	2	2	4
Total Petitions Available for Processing	47	15	62
Processed by:			
Adjudicated Dependent			
Judge	22	6	28
Master	0	0	0
Adjudicated NOT Dependent			
Judge	3	0	3
Master	0	0	0
Withdrawn/Dismissed/Inactive	2	0	2
Other	13	7	20
Total Petitions Processed	40	13	53
Cases Pending 12/31/2011	7	2	9

Data provided by CPCMS

Abuse/Neglect and Status Offenses New Cases Filed, 2002-2011



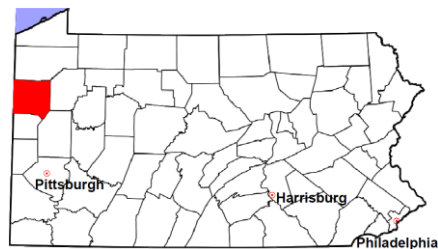
Note: Dependency data for 2002-2010 were collected manually. Dependency data for 2011 were provided by CPCMS.

Mercer County

2011 Population Estimate: 116,205

Class of County: 5th

No. of Common Pleas Court Judgeships: 4



2011 Juvenile Dependency - Adjudicated Dependent Inventory



	Abuse/ Neglect	Status Offenses	Total	
Cases Pending 1/1/2011	118	17	135	
New Adjudicated Dependent Cases	22	6	28	
Other	18	8	26	
Total Adjudicated Dependent Cases	158	31	189	
<u>Court Supervision Terminated:</u>				
Family Reunification	10	2	12	29.3%
Adoption	1	0	1	2.4%
Placement with a Relative/Guardian	10	4	14	34.1%
Aged Out	3	0	3	7.3%
Other Permanency Outcomes*	0	0	0	
Other**	8	3	11	26.8%
Total Adjudicated Dependent Cases Terminated	32	9	41	100.0%
Cases Pending 12/31/2011	126	22	148	

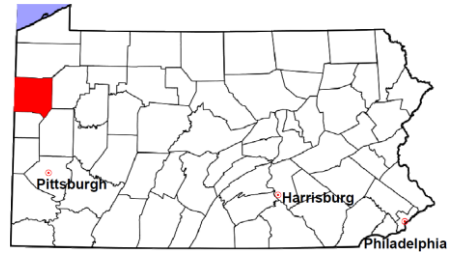
Data provided by CPCMS

* Other Permanency Outcomes include: adjudicated delinquent, death due to natural causes, emancipation, permanent living arrangement, and parent has come forward.

** Other includes cases where Court Supervision is terminated due to transfer out of jurisdiction, withdrawal and administrative closures.

Mercer County

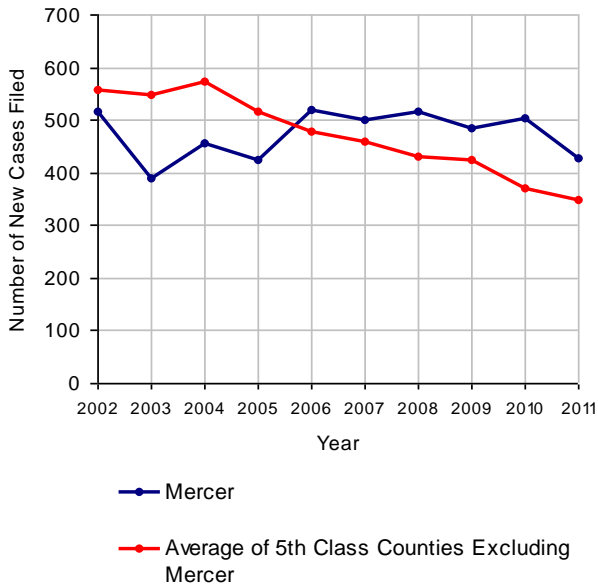
2011 Population Estimate: 116,205
 Class of County: 5th
 No. of Common Pleas Court Judgeships: 4



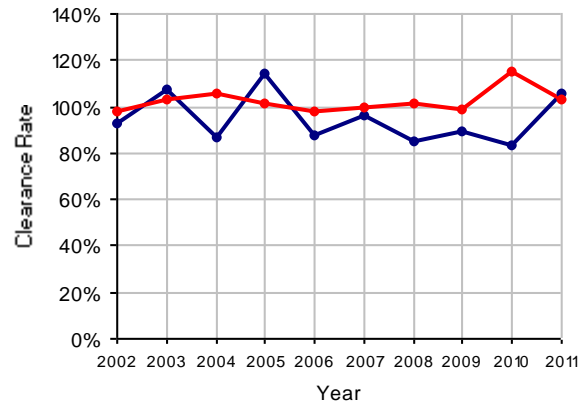
2011 Juvenile Delinquency

	No. of Cases
Cases Pending 1/1/2011	396
New Cases Filed in 2011	427
Cases Available for Processing	823
Processed By:	
Judge	338 74.8%
Non-Judicial Officer	113 25.0%
Other	1 0.2%
Cases Processed	452 100.0%
Cases Pending 12/31/2011	371

Juvenile Delinquency New Cases Filed, 2002-2011

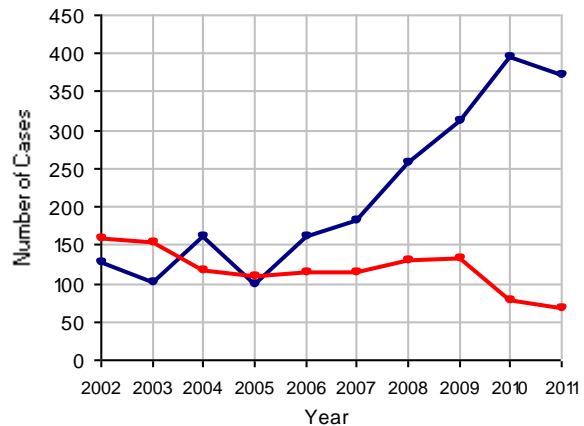


Clearance Rate, 2002-2011



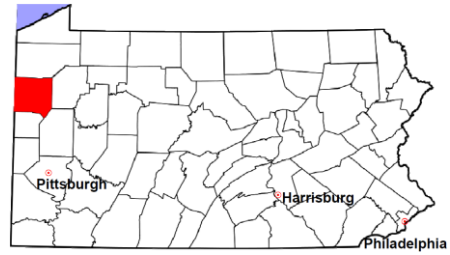
Note: Clearance Rate = Cases Processed / New Cases Filed

Cases Pending at the End of Year, 2002-2011



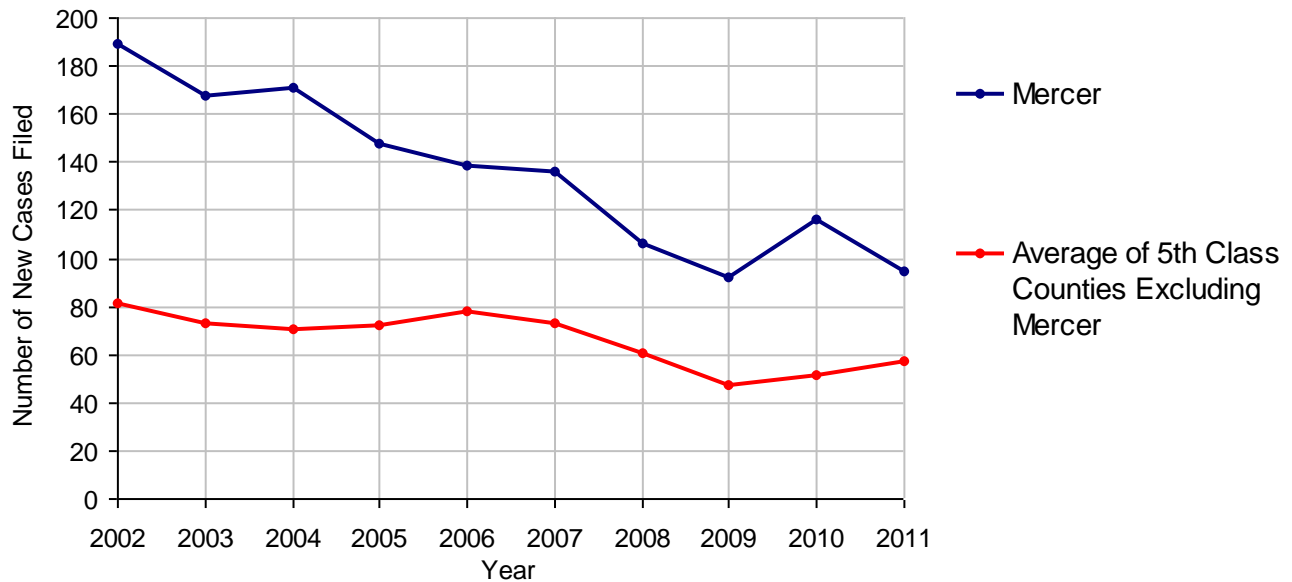
Mercer County

2011 Population Estimate: 116,205
 Class of County: 5th
 No. of Common Pleas Court Judgeships: 4



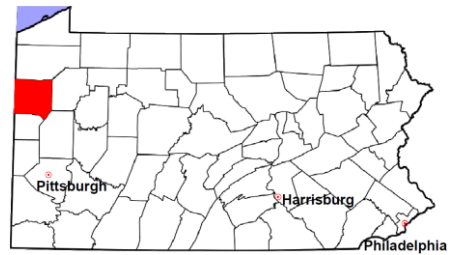
2011 Accounts	No. of Cases	
Cases Pending 1/1/2011	39	
New Cases Filed in 2011	95	
Cases Available for Processing	134	
Processed By:		
Contested before a Judge	0	
Contested before a Non-judicial Officer	1	1.1%
Uncontested	92	97.9%
Other	1	1.1%
Cases Processed	94	100.0%
Cases Pending 12/31/2011	40	

Accounts New Cases Filed, 2002-2011



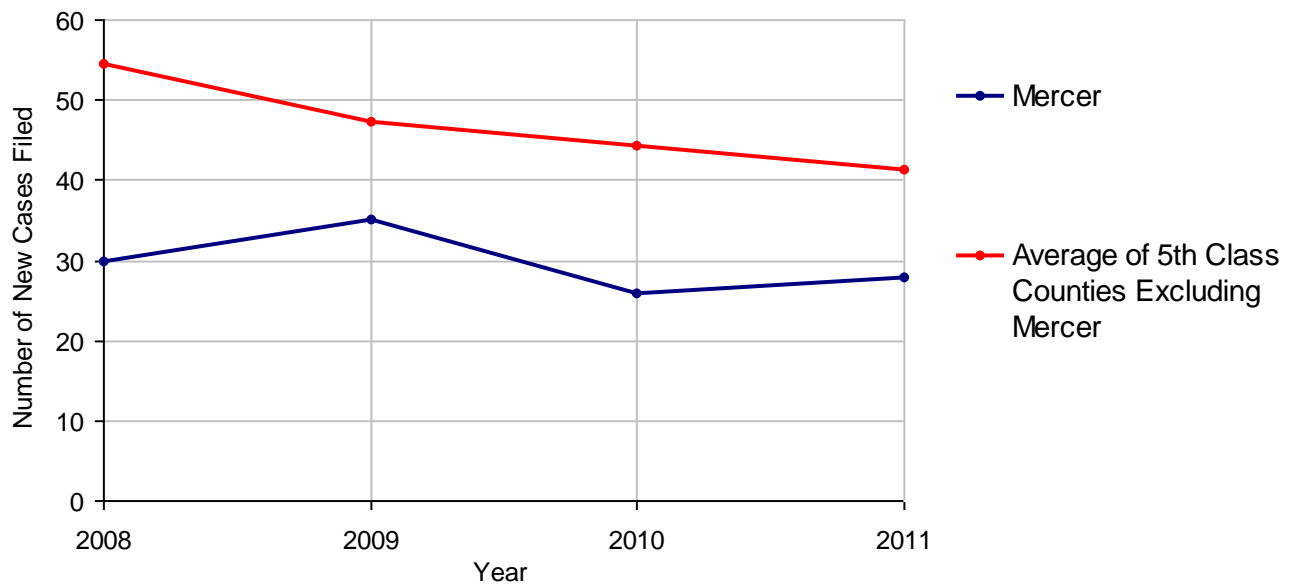
Mercer County

2011 Population Estimate: 116,205
 Class of County: 5th
 No. of Common Pleas Court Judgeships: 4



2011 Adoptions		No. of Cases	
Cases Pending 1/1/2011		12	
New Cases Filed in 2011		28	
Cases Available for Processing		40	
Processed By:			
Contested before a Judge	Granted	0	
	Denied	0	
Uncontested	Granted	26	92.9%
	Denied	0	
Other		2	7.1%
Cases Processed		28	100.0%
Cases Pending 12/31/2011		12	

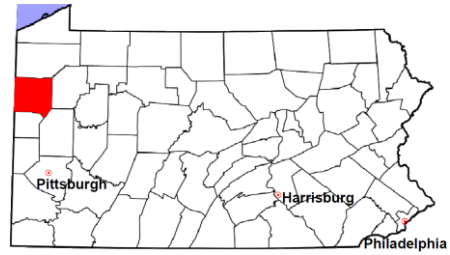
Adoptions New Cases Filed, 2008-2011



Note: Prior to 2008, each petition was counted as one new case, regardless of the number of children listed on the petition. Starting in 2008, each child listed on a petition is counted as a separate case. Therefore, statistics for the years since 2008 should not be compared to those for the years prior to 2008.

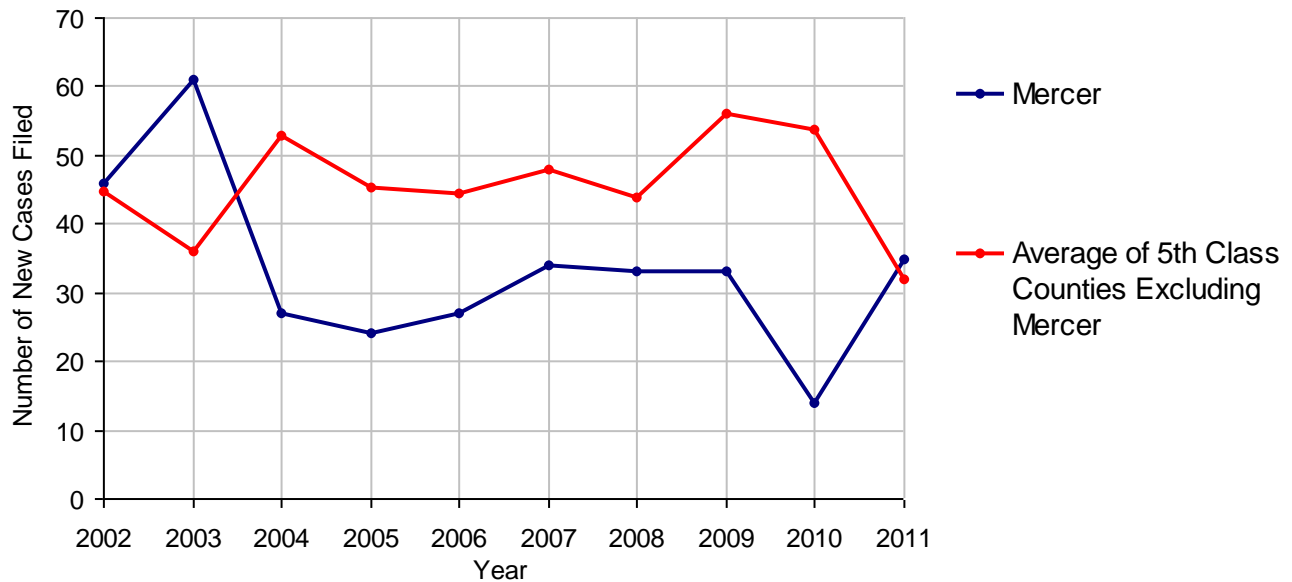
Mercer County

2011 Population Estimate: 116,205
 Class of County: 5th
 No. of Common Pleas Court Judgeships: 4



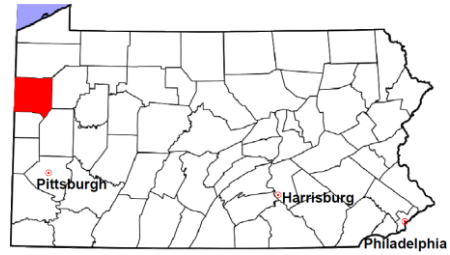
2011 Relinquishments/Terminations		No. of Cases
Cases Pending 1/1/2011		9
New Cases Filed in 2011		35
Cases Available for Processing		44
Processed By:		
Contested before a Judge		0
Uncontested	35	100.0%
Other		0
Cases Processed	35	100.0%
Cases Pending 12/31/2011		9

Relinquishments/Terminations New Cases Filed, 2002-2011



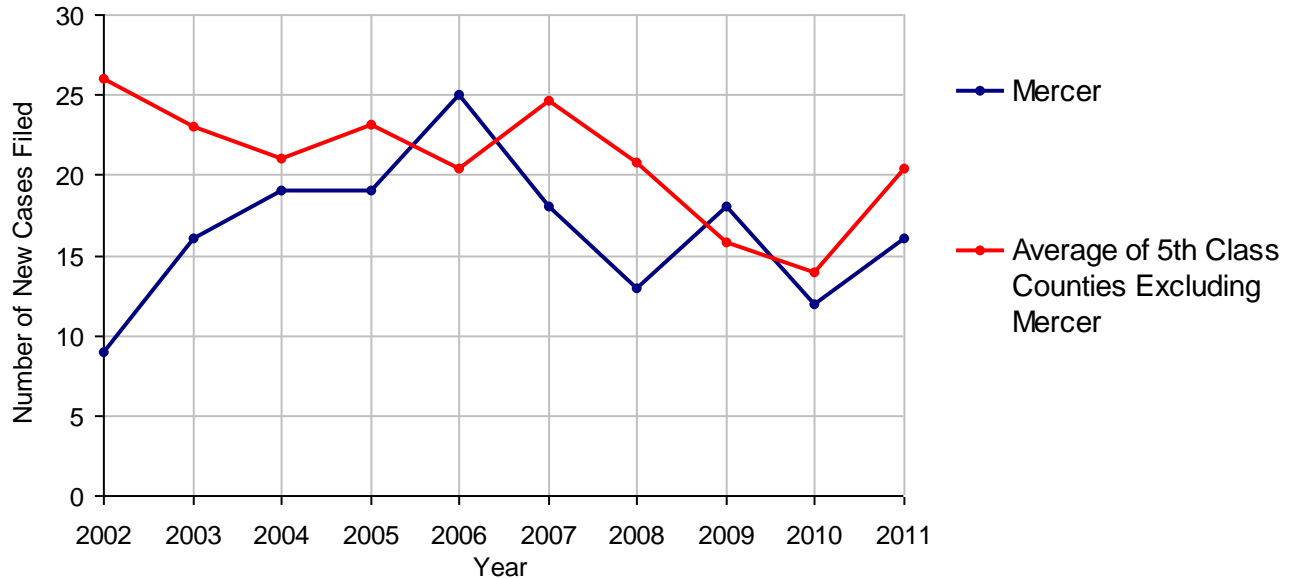
Mercer County

2011 Population Estimate: 116,205
 Class of County: 5th
 No. of Common Pleas Court Judgeships: 4



2011 Appointment of Guardians		No. of Cases	
Cases Pending 1/1/2011		9	
New Cases Filed in 2011		16	
Cases Available for Processing		25	
Processed By:			
Contested before a Judge		0	
Uncontested		13	92.9%
Other		1	7.1%
Cases Processed		14	100.0%
Cases Pending 12/31/2011		11	

Appointment of Guardians New Cases Filed, 2002-2011

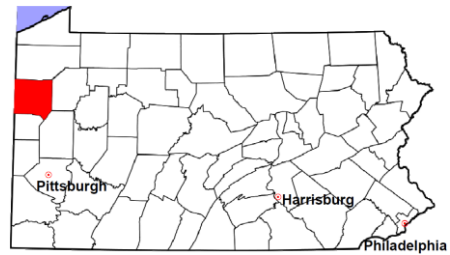


Mercer County

2011 Population Estimate: 116,205

Class of County: 5th

No. of Common Pleas Court Judgeships: 4



2011 Jury Activity and Performance Measures

A. Juror Days	2,959
B. Number Sent to Voir Dire	1,690
Voir Dire Attendance Rate (B/A * 100)	57.1%
C. Number of Jurors Selected	406
Juror Selection Rate (C/B * 100)	24.0%

Note: In mid-2011, AOPC began utilizing the National Center for State Courts' Jury Managers' Toolbox for collecting jury data. This has resulted in limited jury performance measures being reported for 2011. Additional data will be available in 2012.