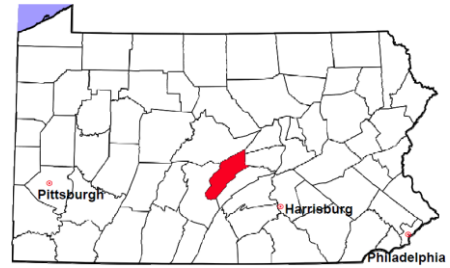


Mifflin County

2011 Population Estimate: 46,858
 Class of County: 6th
 No. of Common Pleas Court Judgeships: 2



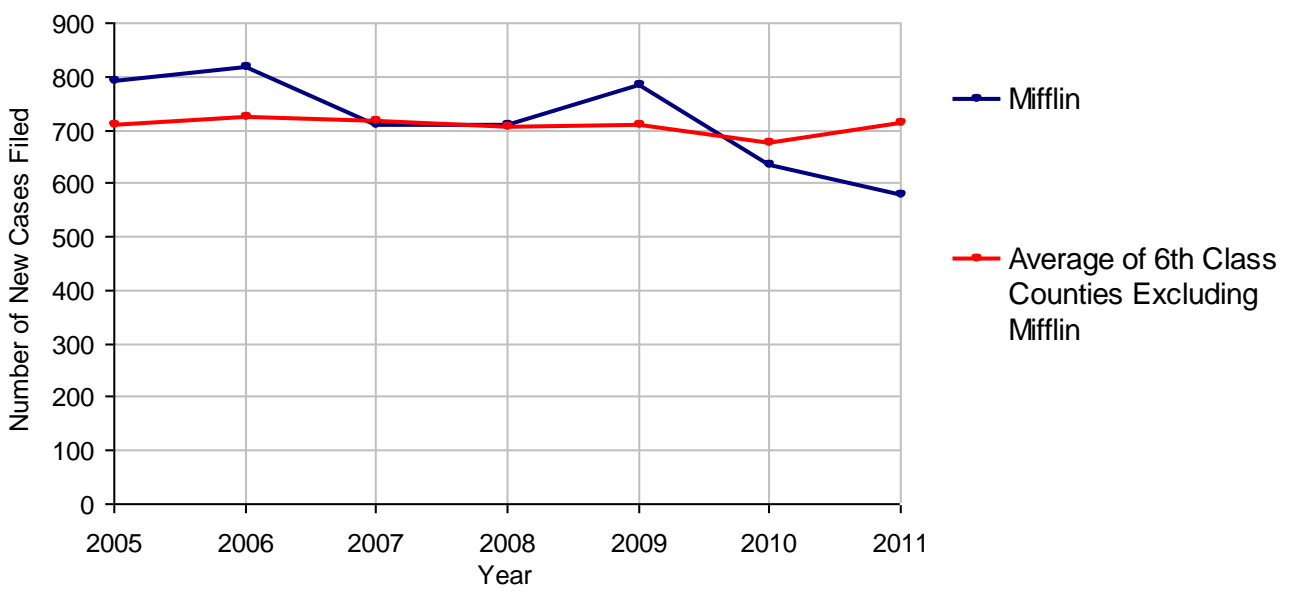
2011 Criminal	No. of Cases
Cases Pending 1/1/2011	159
New Cases Filed in 2011	579
Reopened Cases	15
Cases Available for Disposition	753
Disposed by:	
Withdrawn/Dismissed	37 6.4%
ARD	119 20.6%
Guilty Plea	404 69.8%
Non-Jury Trial	1 0.2%
Jury Trial	10 1.7%
Inactive	4 0.7%
Other	4 0.7%
Total Cases Disposed	579 100.0%
Cases Pending 12/31/2011	174
Cases Awaiting Sentencing	5



Age of Pending Cases as of 12/31/2011		
0-60 Days	74	42.5%
61-120 Days	27	15.5%
121-180 Days	18	10.3%
181-240 Days	13	7.5%
241-300 Days	14	8.0%
301-360 Days	4	2.3%
Over 360 Days	24	13.8%
Total	174	100.0%

Data provided by CPCMS

Criminal New Cases Filed, 2005-2011

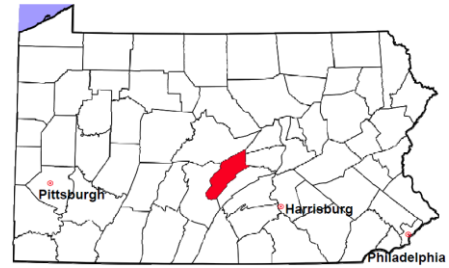


Mifflin County

2011 Population Estimate: 46,858

Class of County: 6th

No. of Common Pleas Court Judgeships: 2



2011 Criminal - New Cases by Case Type

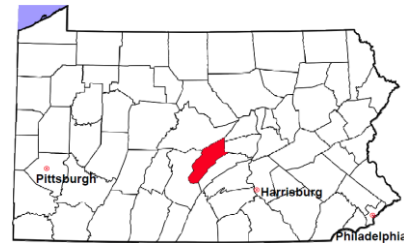


Case Type	Felony	Misdemeanor	Summary /Ungraded	Total
Person	35	89	0	124
Property	81	107	0	188
Drug	23	51	0	74
Weapon	5	2	0	7
Public Order	12	26	0	38
Motor Vehicle - DWI/DUI	0	145	0	145
Motor Vehicle - Other	0	3	0	3
Other	0	0	0	0
Total	156	423	0	579
	26.9%	73.1%		100.0%

Data provided by CPCMS

Mifflin County

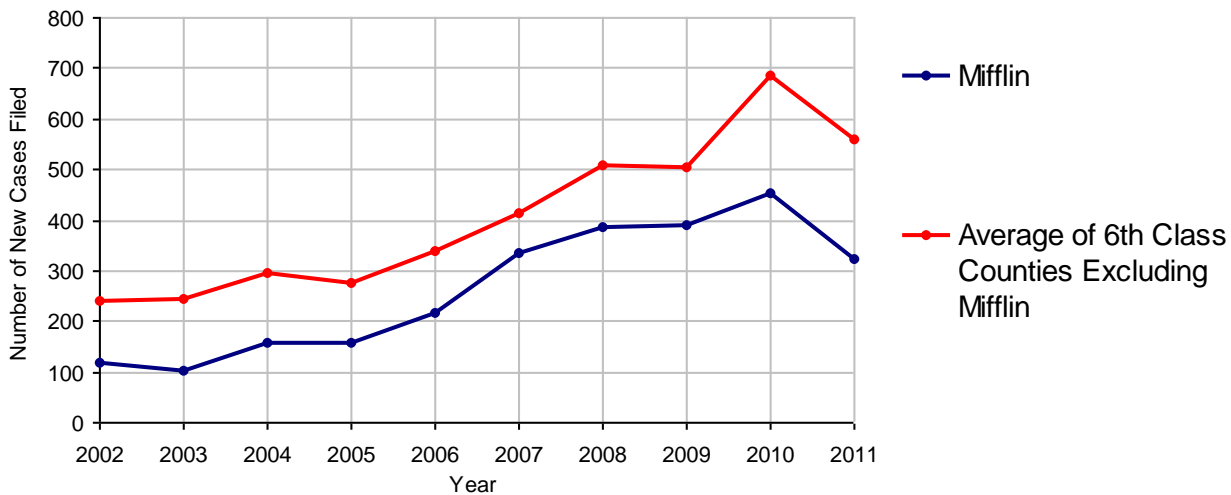
2011 Population Estimate: 46,858
 Class of County: 6th
 No. of Common Pleas Court Judgeships: 2



2011 Civil	Civil Action	Other	Total
Cases Pending 1/1/2011	139	67	206
Docketed Cases	199	125	324
Arbitration Appeals	0	0	0
Transferred In	0	0	0
Returned to Active	2	1	3
Cases Available for Processing	340	193	533
Disposed By:			
Default Judgments	103	53	156
Cases Decided by Arbitration Board	0	0	0
Dispositive Motions	1	1	2
Settlements	48	20	68
Moved to Inactive Status	1	2	3
Transferred/Withdrawn	0	0	0
Pa.R.J.A. 1901 Administrative Purge	0	0	0
Other	15	18	33
Jury Trial	2	0	2
Non-Jury Trial	0	0	0
Total Cases Disposed	170	94	264
Cases Pending 12/31/2011	170	99	269

Age of Pending Cases as of 12/31/2011 (Civil Action Only)		
0-6 months	35	20.6%
7-12 months	52	30.6%
13-18 months	61	35.9%
19-24 months	12	7.1%
25-30 months	3	1.8%
31-36 months	2	1.2%
37-42 months	2	1.2%
43-48 months	0	
49-54 months	0	
55-60 months	0	
61-66 months	0	
67-72 months	1	0.6%
Over 72 months	2	1.2%
Total	170	100.0%

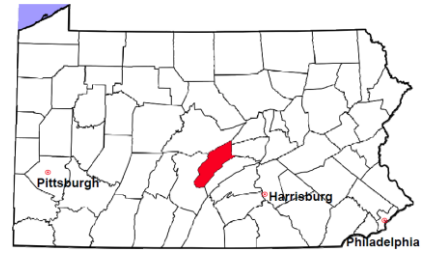
Docketed Cases, 2002-2011



Note: Prior to June 2010, docketed cases under the "Other" category were not reported. The reporting of these cases starting from June 2010 may contribute to an increase in docketed cases from 2009 to 2010.

Mifflin County

2011 Population Estimate: 46,858
 Class of County: 6th
 No. of Common Pleas Court Judgeships: 2



2011 Civil - Docketed Cases Listed by Case Type

TORT (does not include mass tort)

Intentional	2
Malicious Prosecution	0
Motor Vehicle	19
Nuisance	0
Premise Liability	2
Product Liability	1
Slander/Libel/Defamation	0
Other	3

MASS TORT

Asbestos	0
Tobacco	0
Toxic Tort - DES	0
Toxic Tort - Implant	0
Toxic Waste	0
Other	0

PROFESSIONAL LIABILITY

Dental	0
Legal	0
Medical Malpractice	3
Other	2

CONTRACT

(does not include judgments)

Buyer Plaintiff	0
Debt Collection:	
Credit Card	90
Other	45
Employment Dispute:	
Discrimination	0
Other	2
Other	7

REAL PROPERTY

Ejectment*	12
Eminent Domain/ Condemnation*	0
Ground Rent	0
Landlord/Tenant Dispute	23
Mortgage Forclosures:	
Residential*	63
Commercial*	11
Partition of Real Property*	0
Quiet Title*	1
Other*	5

CIVIL APPEALS

Administrative Agencies

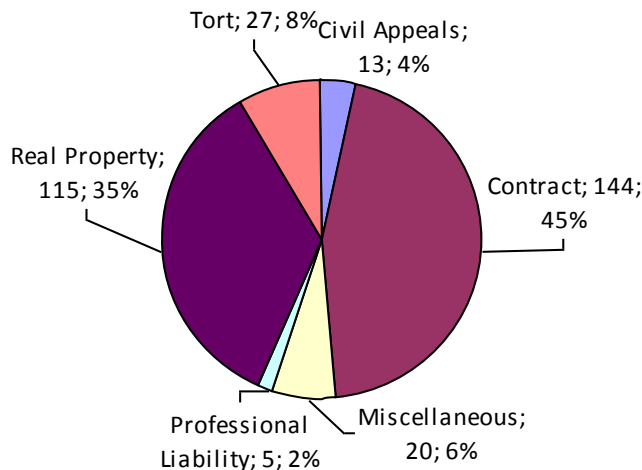
Board of Assessment*	2
Board of Elections*	0
Dept. of Transportation*	7
Zoning Board*	0
Statutory Appeal - Other*	1
Other*	3

MISCELLANEOUS

Common Law/ Statutory Arbitration*	0
Declaratory Judgment*	2
Mandamus*	0
Non-Domestic Relations Restraining Order*	0
Quo Warranto*	0
Replevin*	3
Other*	15

TOTAL DOCKETED CASES: 324

* Civil Other



Of the Docketed Cases:

Pro Se Filings:	9	2.8%
Class Action Suits:	1	0.3%
MDJ Appeals:	14	4.3%

Mifflin County

2011 Population Estimate: 46,858

Class of County: 6th

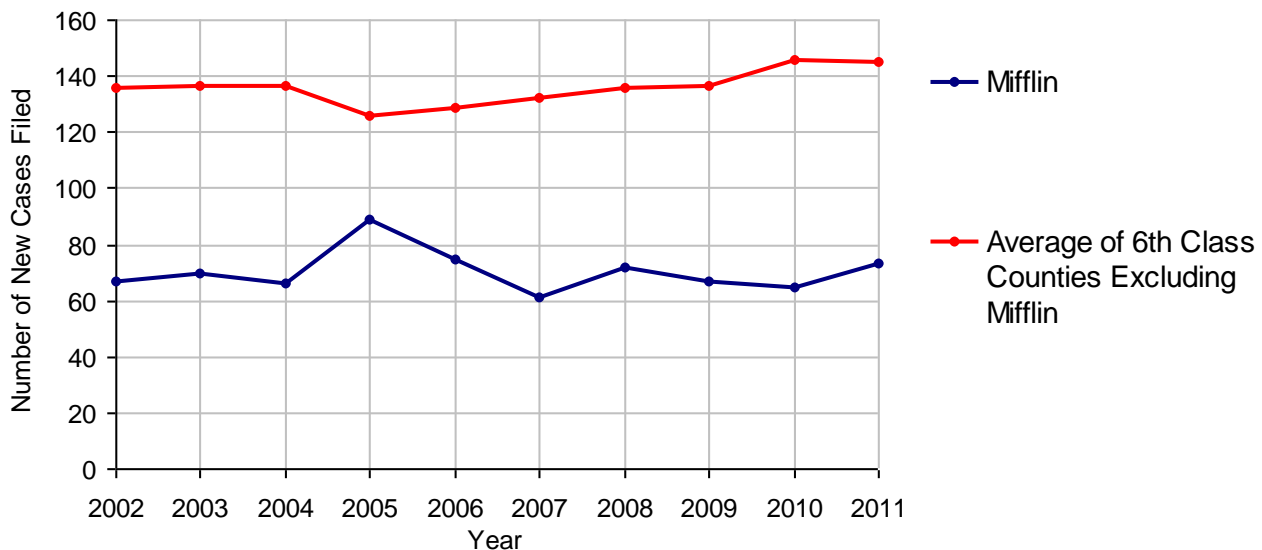
No. of Common Pleas Court Judgeships: 2



2011 Protection From Abuse

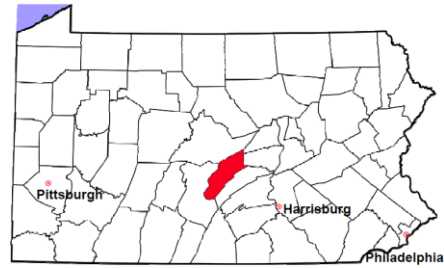
	No. of Petitions
Cases Pending 1/1/2011	5
New Cases Filed in 2011	73
<i>Of these, Petitions Requesting Temporary Orders: 73 (100.0%)</i>	
<i>Temporary Orders DENIED: 0 (0.0%), Temporary Orders GRANTED: 73 (100.0%)</i>	
Cases Available for Processing	78
Processed By:	
Temporary Order DENIED After Ex Parte Hearing and No Evidentiary Hearing Scheduled	0
Temporary Order DISMISSED After Evidentiary Hearing and No Final Order Entered	0
Final Order DENIED After Evidentiary Hearing Before a Judge	1 1.4%
Final Order GRANTED After Evidentiary Hearing Before a Judge	20 28.2%
Plaintiff Did Not Appear For Evidentiary Hearing	3 4.2%
Final Order by STIPULATION OR AGREEMENT Between the Parties	32 45.1%
Petition WITHDRAWN by Plaintiff	15 21.1%
TRANSFERRED to Another Jurisdiction	0
DECEASED Party	0
Other	0
Cases Processed	71 100.0%
Cases Pending 12/31/2011	7

PFA New Cases Filed, 2002-2011

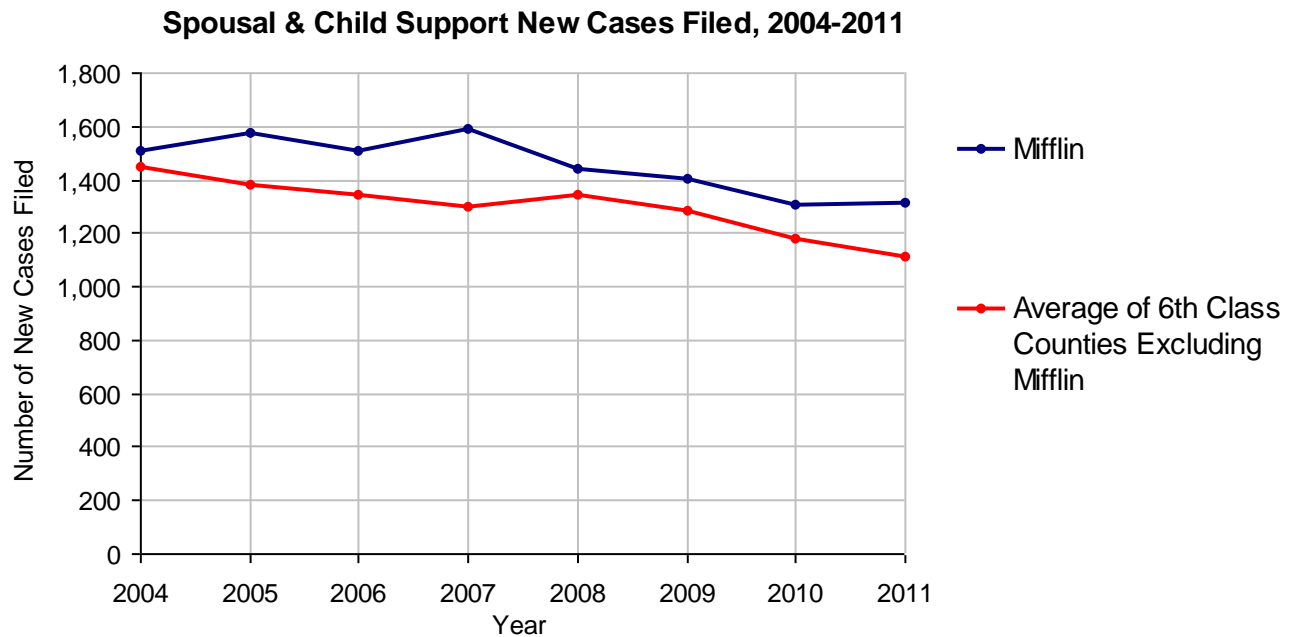


Mifflin County

2011 Population Estimate: 46,858
 Class of County: 6th
 No. of Common Pleas Court Judgeships: 2



2011 Spousal & Child Support	No. of Petitions	
Cases Pending 1/1/2011	176	
New Cases Filed in 2011	1,317	
Dockets Transferred In (+)	14	
Dockets Transferred Out (-)	30	
Cases Available for Processing	1,477	
Processed By:		
Judge	40	3.0%
Intake Officer	1,286	97.0%
Hearing Officer	0	
Other	0	
Cases Processed	1,326	100.0%
Cases Pending 12/31/2011	151	

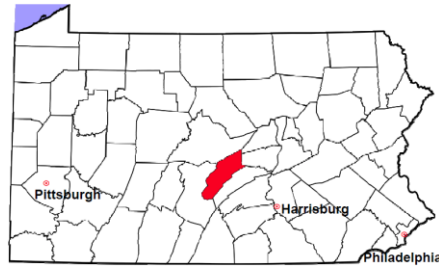


Mifflin County

2011 Population Estimate: 46,858

Class of County: 6th

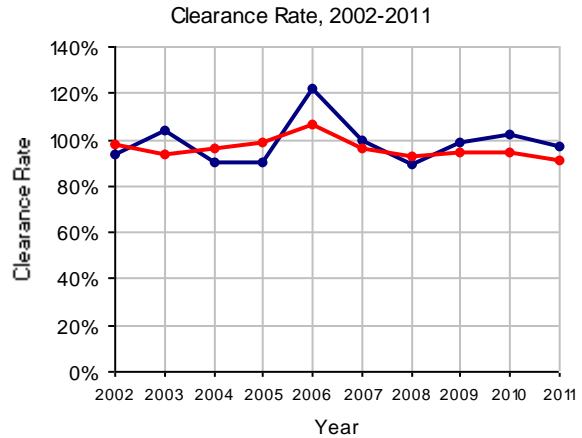
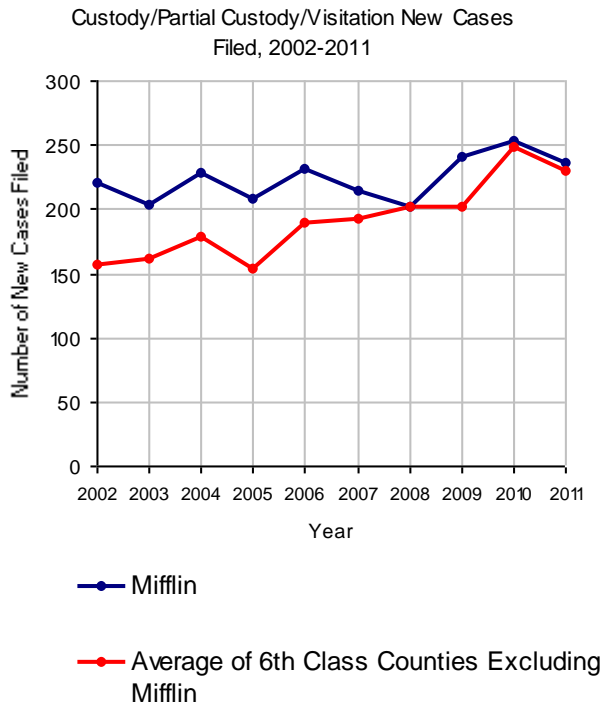
No. of Common Pleas Court Judgeships: 2



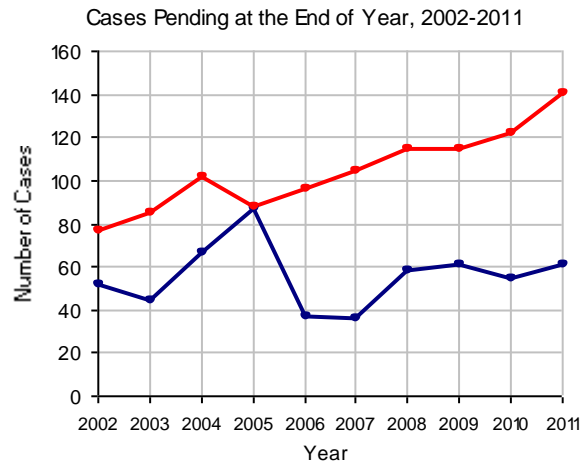
2011 Custody/Partial Custody/Visitation

No. of
Petitions

Cases Pending 1/1/2011	55
New Cases Filed in 2011	236
Cases Available for Processing	291
Processed By:	
Judge	121 52.6%
Non-Judicial Officer	0
Other	109 47.4%
Cases Processed	230 100.0%
Cases Pending 12/31/2011	61

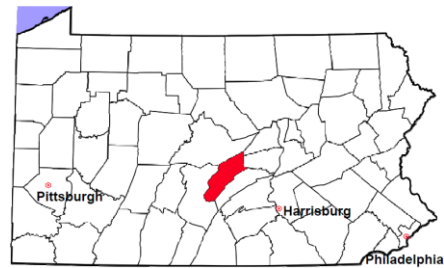


Note: Clearance Rate = Cases Processed / New Cases Filed



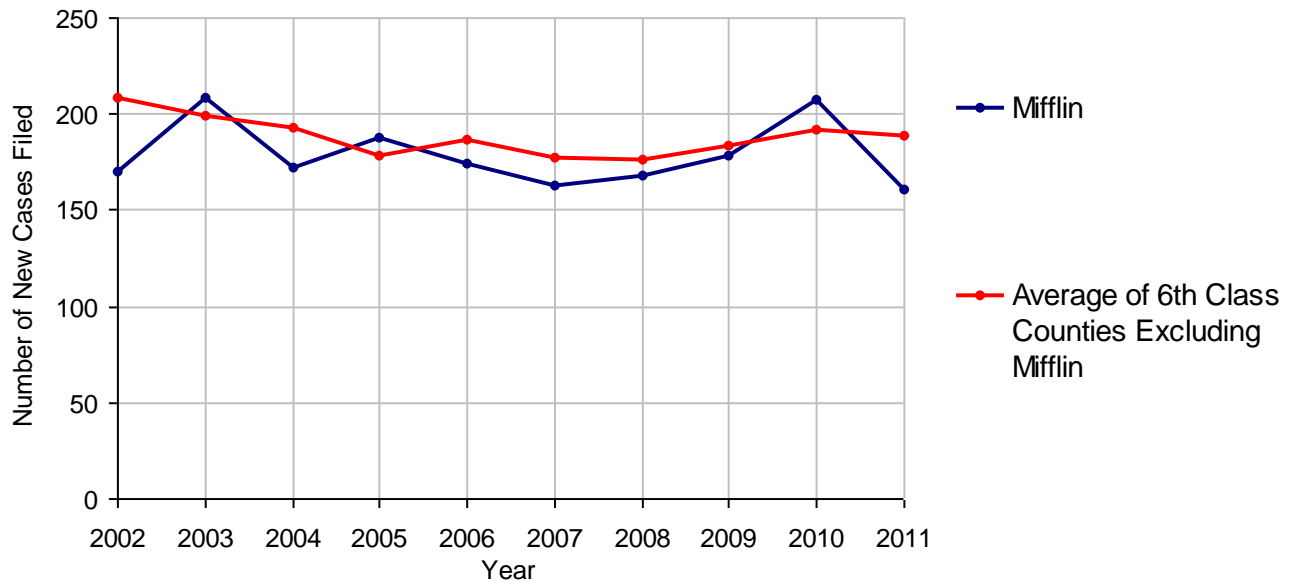
Mifflin County

2011 Population Estimate: 46,858
 Class of County: 6th
 No. of Common Pleas Court Judgeships: 2



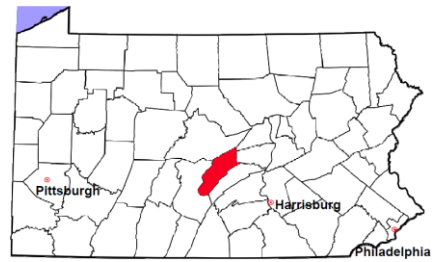
2011 Divorce	No. of Petitions	
Cases Pending 1/1/2011	218	
New Cases Filed in 2011	161	
Cases Available for Processing	379	
Processed By:		
Contested Before a Judge	0	
Contested Before a Master	0	
Uncontested	151	100.0%
Other	0	
Cases Processed	151	100.0%
Cases Pending 12/31/2011	228	

Divorce New Cases Filed, 2002-2011



Mifflin County

2011 Population Estimate: 46,858
 Class of County: 6th
 No. of Common Pleas Court Judgeships: 2



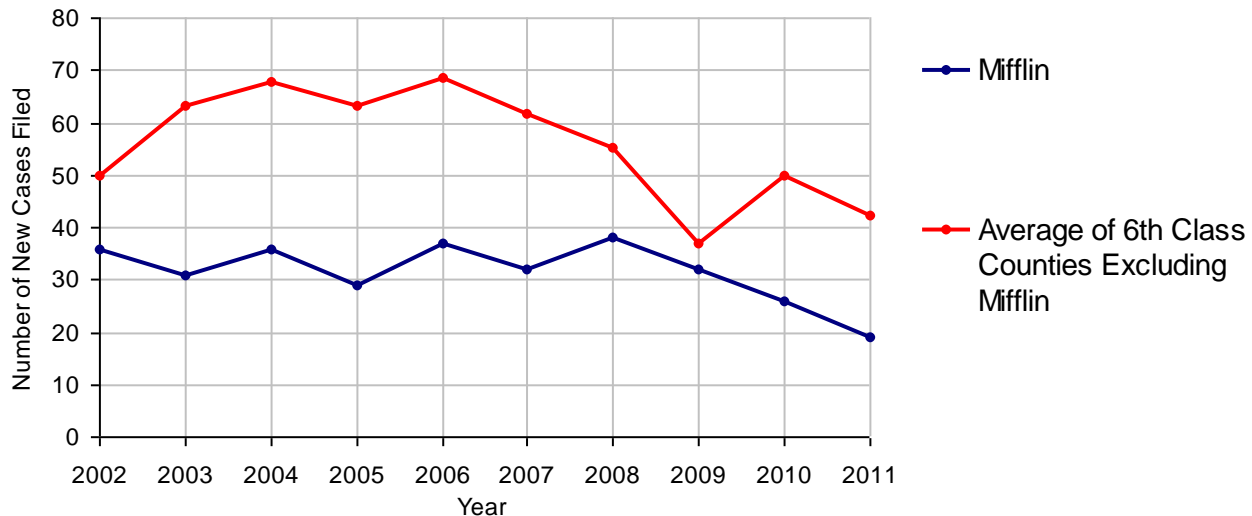
2011 Juvenile Dependency - Active Dependent Inventory



	Abuse/ Neglect	Status Offenses	Total
Cases Pending 1/1/2011	3	0	3
New Petitions Filed in 2011	19	0	19
Other	1	0	1
Total Petitions Available for Processing	23	0	23
Processed by:			
Adjudicated Dependent			
Judge	18	0	18
Master	0	0	0
Adjudicated NOT Dependent			
Judge	0	0	0
Master	0	0	0
Withdrawn/Dismissed/Inactive	2	0	2
Other	1	0	1
Total Petitions Processed	21	0	21
Cases Pending 12/31/2011	2	0	2

Data provided by CPCMS

Abuse/Neglect and Status Offenses New Cases Filed, 2002-2011



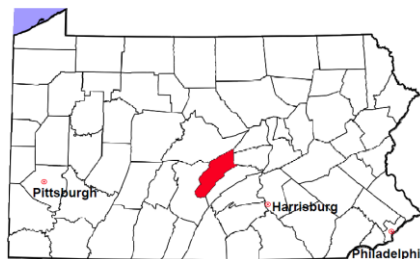
Note: Dependency data for 2002-2010 were collected manually. Dependency data for 2011 were provided by CPCMS.

Mifflin County

2011 Population Estimate: 46,858

Class of County: 6th

No. of Common Pleas Court Judgeships: 2



2011 Juvenile Dependency - Adjudicated Dependent Inventory



	Abuse/ Neglect	Status Offenses	Total	
Cases Pending 1/1/2011	52	0	52	
New Adjudicated Dependent Cases	18	0	18	
Other	2	0	2	
Total Adjudicated Dependent Cases	72	0	72	
<u>Court Supervision Terminated:</u>				
Family Reunification	3	0	3	14.3%
Adoption	11	0	11	52.4%
Placement with a Relative/Guardian	3	0	3	14.3%
Aged Out	2	0	2	9.5%
Other Permanency Outcomes*	0	0	0	
Other**	2	0	2	9.5%
Total Adjudicated Dependent Cases Terminated	21	0	21	100.0%
Cases Pending 12/31/2011	51	0	51	

Data provided by CPCMS

* Other Permanency Outcomes include: adjudicated delinquent, death due to natural causes, emancipation, permanent living arrangement, and parent has come forward.

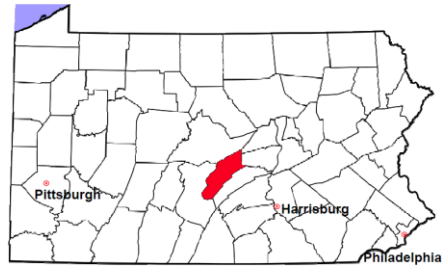
** Other includes cases where Court Supervision is terminated due to transfer out of jurisdiction, withdrawal and administrative closures.

Mifflin County

2011 Population Estimate: 46,858

Class of County: 6th

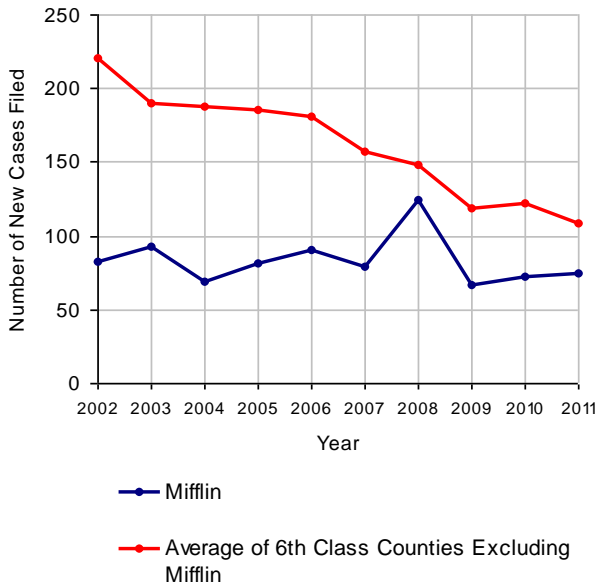
No. of Common Pleas Court Judgeships: 2



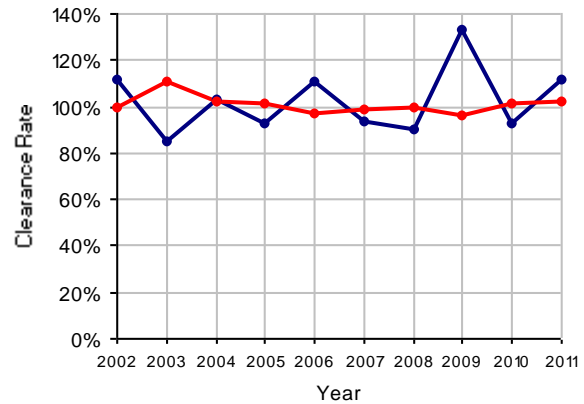
2011 Juvenile Delinquency

	No. of Cases
Cases Pending 1/1/2011	18
New Cases Filed in 2011	75
Cases Available for Processing	93
Processed By:	
Judge	56 66.7%
Non-Judicial Officer	22 26.2%
Other	6 7.1%
Cases Processed	84 100.0%
Cases Pending 12/31/2011	9

Juvenile Delinquency New Cases Filed, 2002-2011

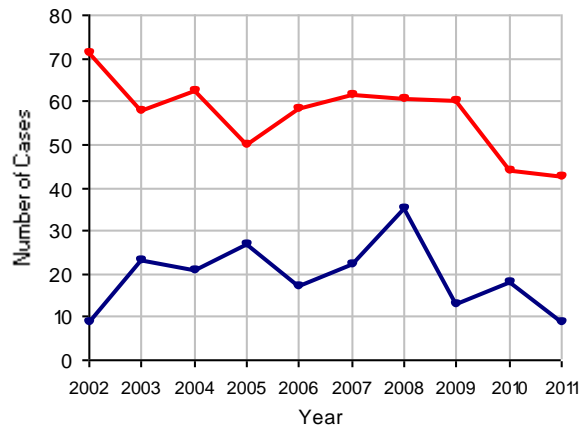


Clearance Rate, 2002-2011



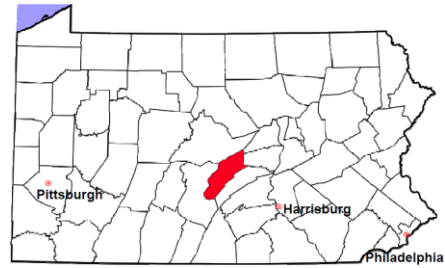
Note: Clearance Rate = Cases Processed / New Cases Filed

Cases Pending at the End of Year, 2002-2011



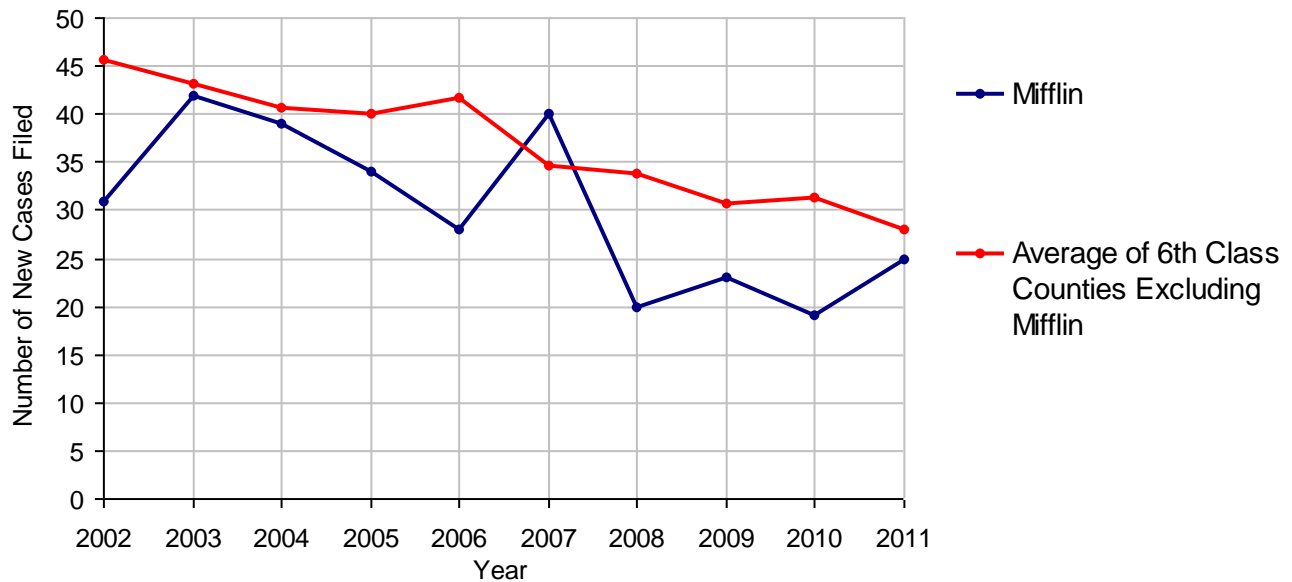
Mifflin County

2011 Population Estimate: 46,858
 Class of County: 6th
 No. of Common Pleas Court Judgeships: 2



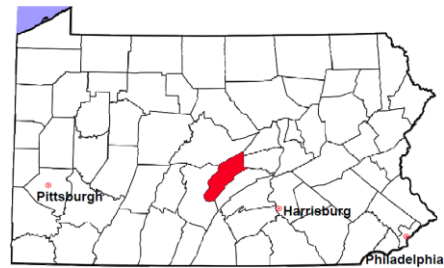
2011 Accounts	No. of Cases
Cases Pending 1/1/2011	3
New Cases Filed in 2011	25
Cases Available for Processing	28
Processed By:	
Contested before a Judge	1 4.0%
Contested before a Non-judicial Officer	0
Uncontested	24 96.0%
Other	0
Cases Processed	25 100.0%
Cases Pending 12/31/2011	3

Accounts New Cases Filed, 2002-2011



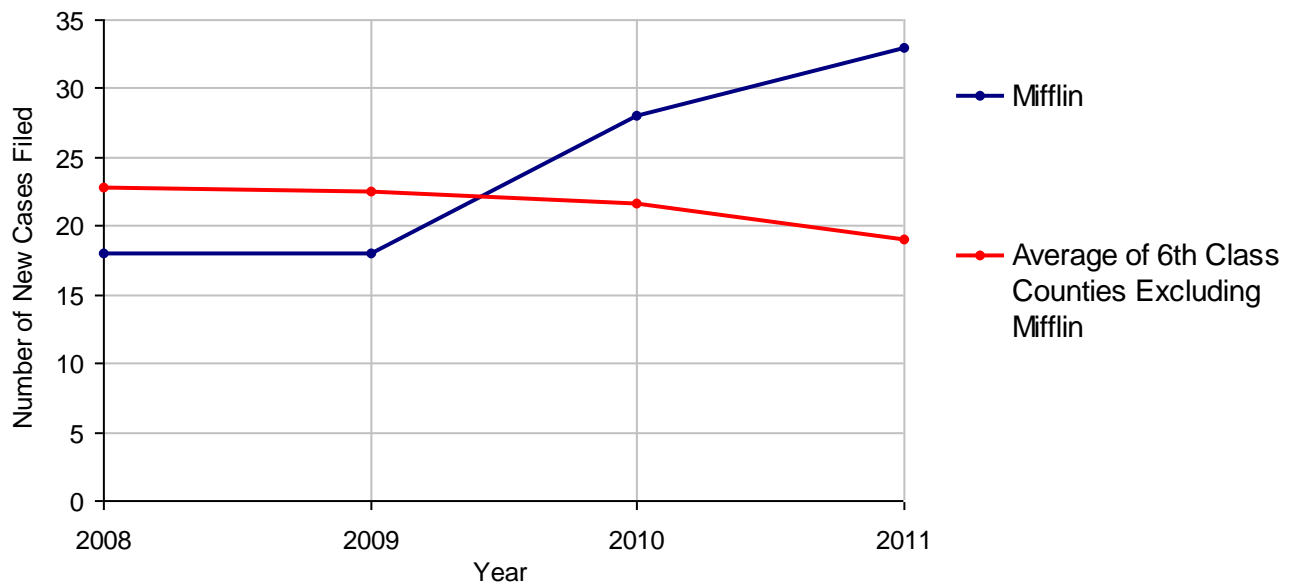
Mifflin County

2011 Population Estimate: 46,858
 Class of County: 6th
 No. of Common Pleas Court Judgeships: 2



2011 Adoptions		No. of Cases	
Cases Pending 1/1/2011		3	
New Cases Filed in 2011		33	
Cases Available for Processing		36	
Processed By:			
Contested before a Judge	Granted	17	53.1%
	Denied	0	
Uncontested	Granted	15	46.9%
	Denied	0	
Other		0	
Cases Processed		32	100.0%
Cases Pending 12/31/2011		4	

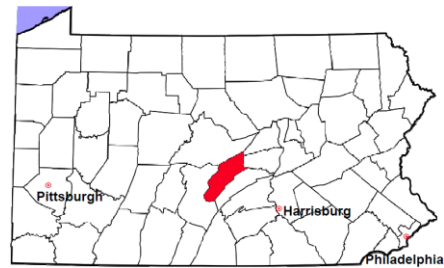
Adoptions New Cases Filed, 2008-2011



Note: Prior to 2008, each petition was counted as one new case, regardless of the number of children listed on the petition. Starting in 2008, each child listed on a petition is counted as a separate case. Therefore, statistics for the years since 2008 should not be compared to those for the years prior to 2008.

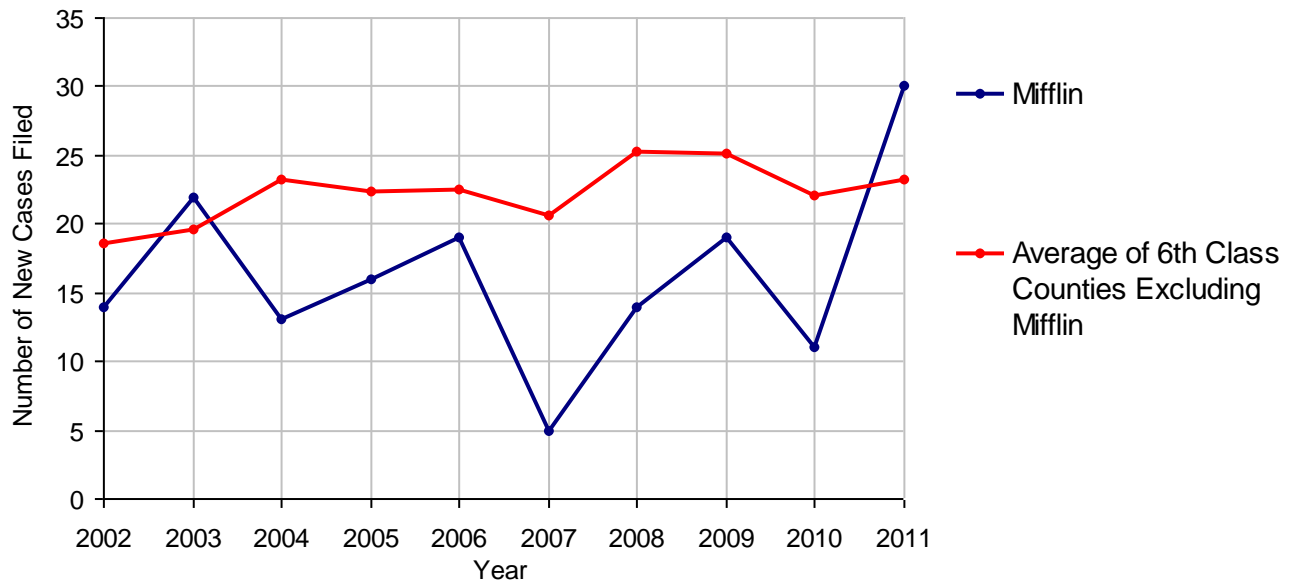
Mifflin County

2011 Population Estimate: 46,858
 Class of County: 6th
 No. of Common Pleas Court Judgeships: 2



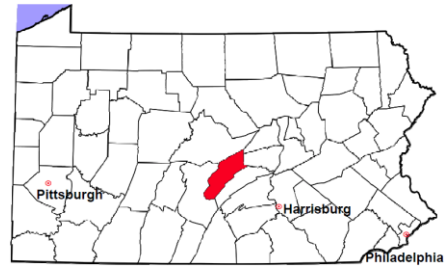
2011 Relinquishments/Terminations		No. of Cases
Cases Pending 1/1/2011		1
New Cases Filed in 2011		30
Cases Available for Processing		31
Processed By:		
Contested before a Judge	14	51.9%
Uncontested	13	48.1%
Other	0	
Cases Processed	27	100.0%
Cases Pending 12/31/2011		4

Relinquishments/Terminations New Cases Filed, 2002-2011



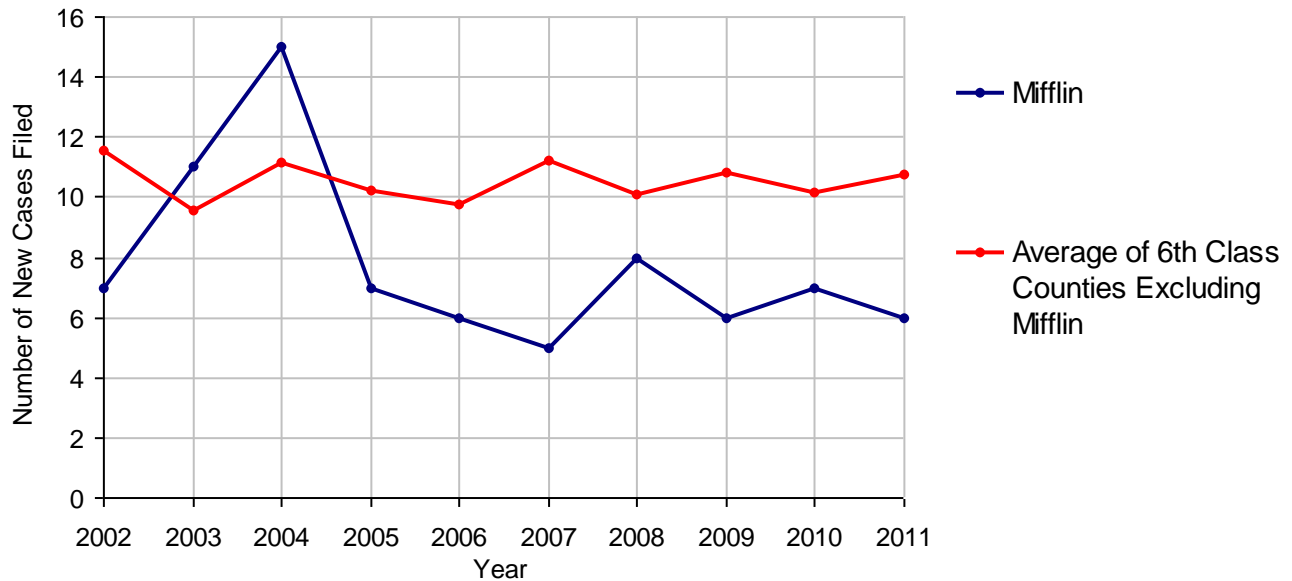
Mifflin County

2011 Population Estimate: 46,858
 Class of County: 6th
 No. of Common Pleas Court Judgeships: 2



2011 Appointment of Guardians		No. of Cases
Cases Pending 1/1/2011		2
New Cases Filed in 2011		6
Cases Available for Processing		8
Processed By:		
Contested before a Judge		0
Uncontested	4	80.0%
Other	1	20.0%
Cases Processed	5	100.0%
Cases Pending 12/31/2011		3

Appointment of Guardians New Cases Filed, 2002-2011

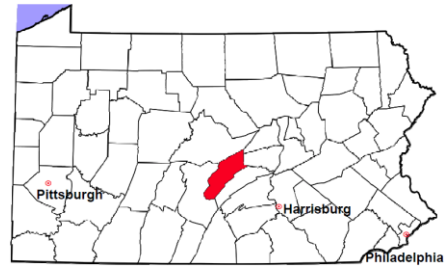


Mifflin County

2011 Population Estimate: 46,858

Class of County: 6th

No. of Common Pleas Court Judgeships: 2



2011 Jury Activity and Performance Measures

A. Juror Days	626
B. Number Sent to Voir Dire	580
Voir Dire Attendance Rate (B/A * 100)	92.7%
C. Number of Jurors Selected	253
Juror Selection Rate (C/B * 100)	43.6%

Note: In mid-2011, AOPC began utilizing the National Center for State Courts' Jury Managers' Toolbox for collecting jury data. This has resulted in limited jury performance measures being reported for 2011. Additional data will be available in 2012.