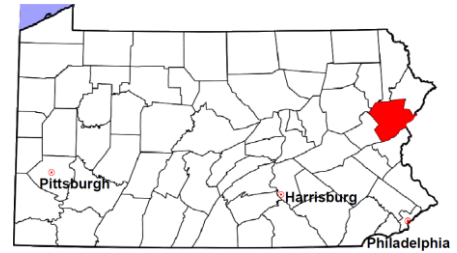


Monroe County

2011 Population Estimate: 169,882
 Class of County: 4th
 No. of Common Pleas Court Judgeships: 6



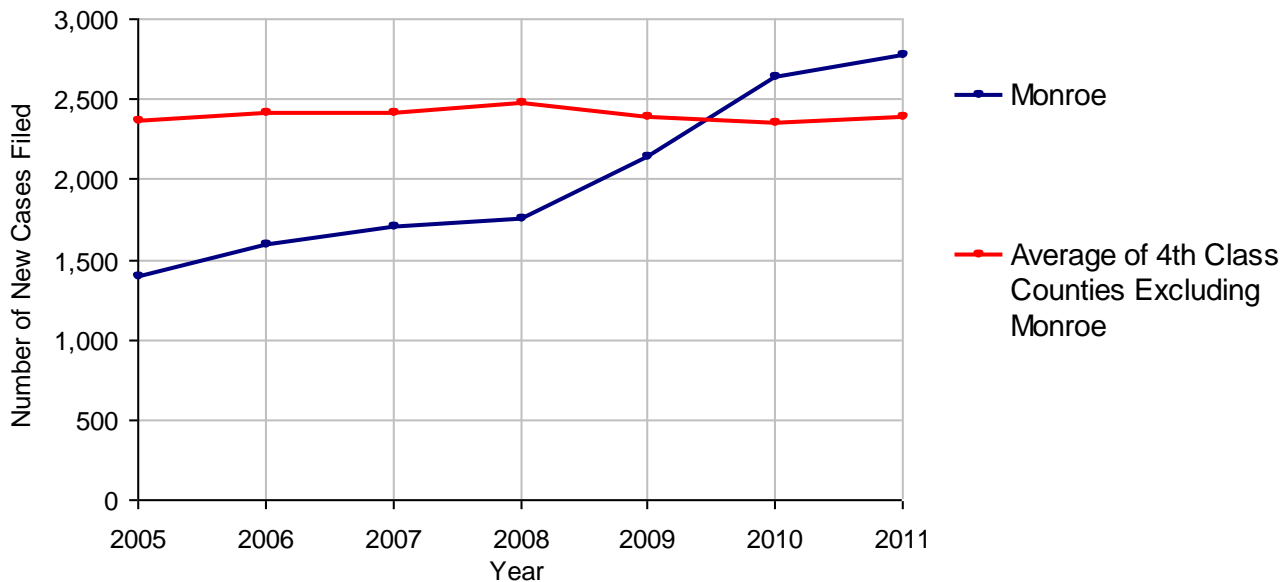
2011 Criminal	No. of Cases
Cases Pending 1/1/2011	1,269
New Cases Filed in 2011	2,795
Reopened Cases	111
Cases Available for Disposition	4,175
Disposed by:	
Withdrawn/Dismissed	102 3.7%
ARD	1,018 37.4%
Guilty Plea	1,292 47.5%
Non-Jury Trial	7 0.3%
Jury Trial	37 1.4%
Inactive	111 4.1%
Other	155 5.7%
Total Cases Disposed	2,722 100.0%
Cases Pending 12/31/2011	1,453
Cases Awaiting Sentencing	248



Age of Pending Cases as of 12/31/2011		
0-60 Days	421	29.0%
61-120 Days	392	27.0%
121-180 Days	232	16.0%
181-240 Days	109	7.5%
241-300 Days	78	5.4%
301-360 Days	50	3.4%
Over 360 Days	171	11.8%
Total	1,453	100.0%

Data provided by CPCMS

Criminal New Cases Filed, 2005-2011

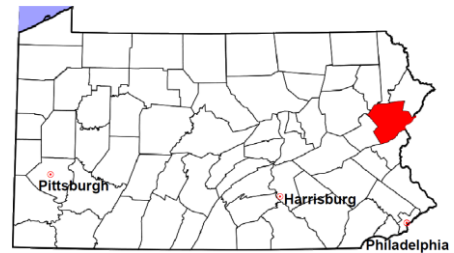


Monroe County

2011 Population Estimate: 169,882

Class of County: 4th

No. of Common Pleas Court Judgeships: 6



2011 Criminal - New Cases by Case Type

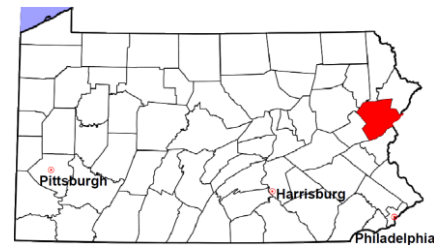


Case Type	Felony	Misdemeanor	Summary /Ungraded	Total
Person	141	159	5	305
Property	298	240	8	546
Drug	173	145	3	321
Weapon	26	11	0	37
Public Order	118	99	0	217
Motor Vehicle - DWI/DUI	0	1,343	0	1,343
Motor Vehicle - Other	1	11	1	13
Other	12	1	0	13
Total	769	2,009	17	2,795
	27.5%	71.9%	0.6%	100.0%

Data provided by CPCMS

Monroe County

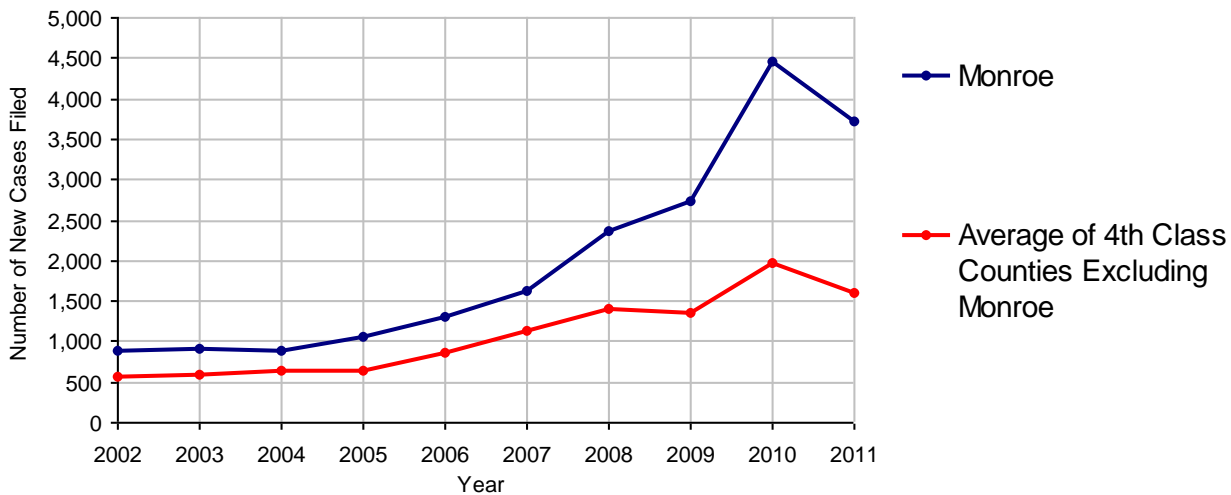
2011 Population Estimate: 169,882
 Class of County: 4th
 No. of Common Pleas Court Judgeships: 6



2011 Civil	Civil Action	Other	Total
Cases Pending 1/1/2011	1,896	1,613	3,509
Docketed Cases	1,965	1,747	3,712
Arbitration Appeals	16	0	16
Transferred In	14	0	14
Returned to Active	0	0	0
Cases Available for Processing	3,891	3,360	7,251
Disposed By:			
Default Judgments	1,257	0	1,257
Cases Decided by Arbitration Board	180	0	180
Dispositive Motions	0	0	0
Settlements	30	0	30
Moved to Inactive Status	3	0	3
Transferred/Withdrawn	1	0	1
Pa.R.J.A. 1901 Administrative Purge	0	0	0
Other	41	0	41
Jury Trial	4	0	4
Non-Jury Trial	9	0	9
Total Cases Disposed	1,525	0	1,525
Cases Pending 12/31/2011	2,366	3,360	5,726

Age of Pending Cases as of 12/31/2011 (Civil Action Only)		
0-6 months	2,366	100.0%
7-12 months	0	
13-18 months	0	
19-24 months	0	
25-30 months	0	
31-36 months	0	
37-42 months	0	
43-48 months	0	
49-54 months	0	
55-60 months	0	
61-66 months	0	
67-72 months	0	
Over 72 months	0	
Total	2,366	100.0%

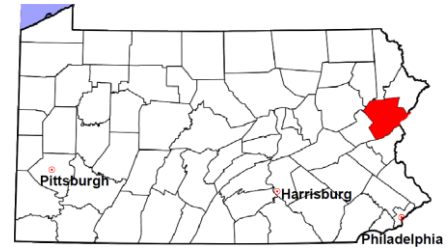
Docketed Cases, 2002-2011



Note: Prior to June 2010, docketed cases under the "Other" category were not reported. The reporting of these cases starting from June 2010 may contribute to an increase in docketed cases from 2009 to 2010.

Monroe County

2011 Population Estimate: 169,882
 Class of County: 4th
 No. of Common Pleas Court Judgeships: 6



2011 Civil - Docketed Cases Listed by Case Type

TORT (does not include mass tort)

Intentional	3
Malicious Prosecution	0
Motor Vehicle	275
Nuisance	1
Premise Liability	63
Product Liability	2
Slander/Libel/Defamation	1
Other	49

MASS TORT

Asbestos	0
Tobacco	0
Toxic Tort - DES	0
Toxic Tort - Implant	0
Toxic Waste	0
Other	0

PROFESSIONAL LIABILITY

Dental	0
Legal	0
Medical Malpractice	20
Other	4

CONTRACT

(does not include judgments)

Buyer Plaintiff	14
Debt Collection:	
Credit Card	1,044
Other	383
Employment Dispute:	
Discrimination	5
Other	4
Other	58

REAL PROPERTY

Ejectment*	129
Eminent Domain/ Condemnation*	21
Ground Rent	3
Landlord/Tenant Dispute	36
Mortgage Forclosures:	
Residential*	1,257
Commercial*	25
Partition of Real Property*	3
Quiet Title*	51
Other*	30

CIVIL APPEALS

Administrative Agencies

Board of Assessment*	28
Board of Elections*	0
Dept. of Transportation*	41
Zoning Board*	6
Statutory Appeal - Other*	5
Other*	55

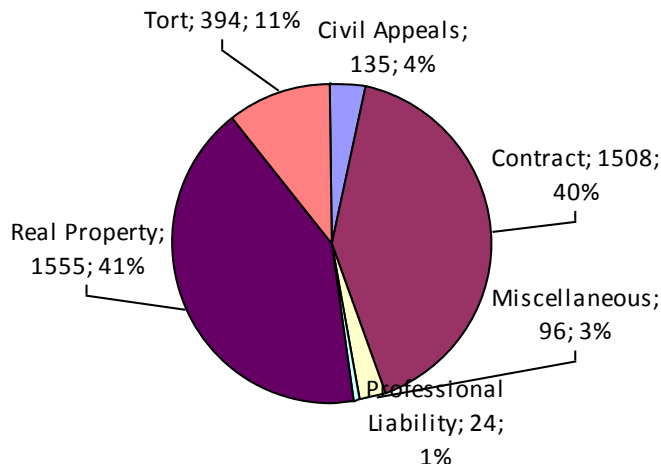
MISCELLANEOUS

Common Law/ Statutory Arbitration*	0
Declaratory Judgment*	10
Mandamus*	3
Non-Domestic Relations Restraining Order*	0
Quo Warranto*	0
Replevin*	36
Other*	47

TOTAL DOCKETED CASES:

3,712

* Civil Other



Of the Docketed Cases:

Pro Se Filings:	65	1.8%
Class Action Suits:	0	
MDJ Appeals:	157	4.2%

Monroe County

2011 Population Estimate: 169,882
 Class of County: 4th
 No. of Common Pleas Court Judgeships: 6

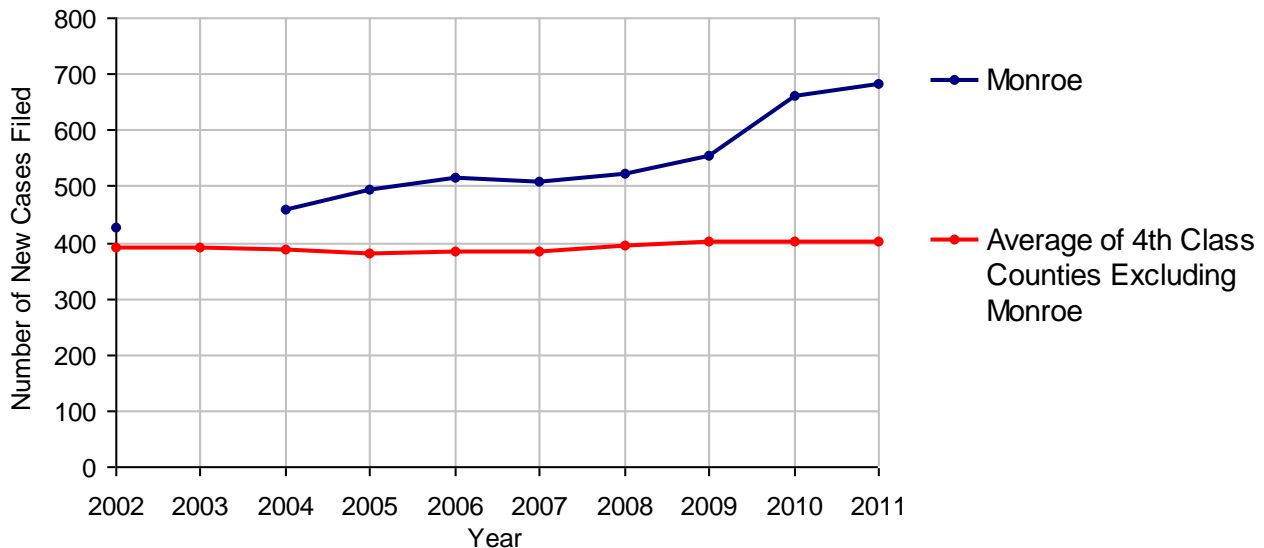


2011 Protection From Abuse

**No. of
Petitions**

Cases Pending 1/1/2011	6
New Cases Filed in 2011	682
<i>Of these, Petitions Requesting Temporary Orders: 682 (100.0%)</i>	
<i>Temporary Orders DENIED: 0 (0.0%), Temporary Orders GRANTED: 682 (100.0%)</i>	
Cases Available for Processing	688
Processed By:	
Temporary Order DENIED After Ex Parte Hearing and No Evidentiary Hearing Scheduled	0
Temporary Order DISMISSED After Evidentiary Hearing and No Final Order Entered	0
Final Order DENIED After Evidentiary Hearing Before a Judge	78 11.5%
Final Order GRANTED After Evidentiary Hearing Before a Judge	93 13.7%
Plaintiff Did Not Appear For Evidentiary Hearing	240 35.2%
Final Order by STIPULATION OR AGREEMENT Between the Parties	181 26.6%
Petition WITHDRAWN by Plaintiff	88 12.9%
TRANSFERRED to Another Jurisdiction	0
DECEASED Party	1 0.1%
Other	0
Cases Processed	681 100.0%
Cases Pending 12/31/2011	7

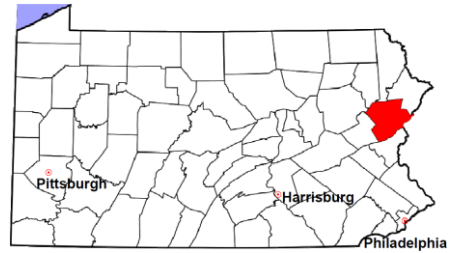
PFA New Cases Filed, 2002-2011



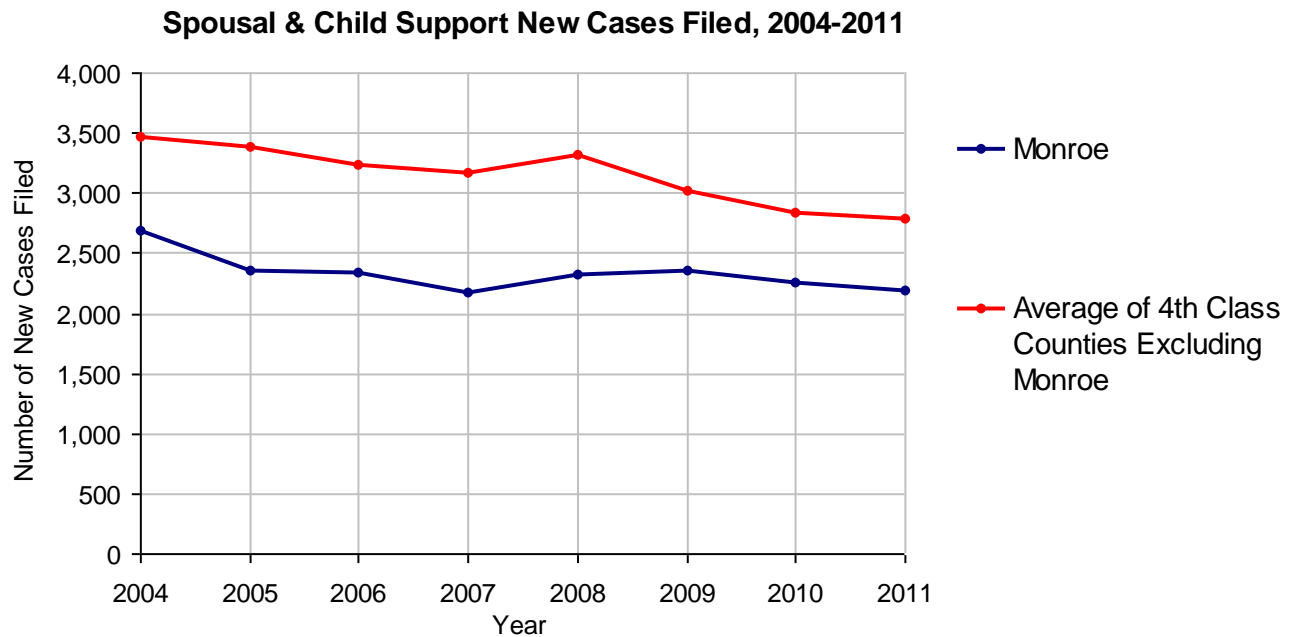
Note: PFA data for 2003 are not available.

Monroe County

2011 Population Estimate: 169,882
 Class of County: 4th
 No. of Common Pleas Court Judgeships: 6



2011 Spousal & Child Support	No. of Petitions	
Cases Pending 1/1/2011	546	
New Cases Filed in 2011	2,199	
Dockets Transferred In (+)	27	
Dockets Transferred Out (-)	57	
Cases Available for Processing	2,715	
Processed By:		
Judge	8	0.4%
Intake Officer	2,142	95.1%
Hearing Officer	102	4.5%
Other	0	
Cases Processed	2,252	100.0%
Cases Pending 12/31/2011	463	

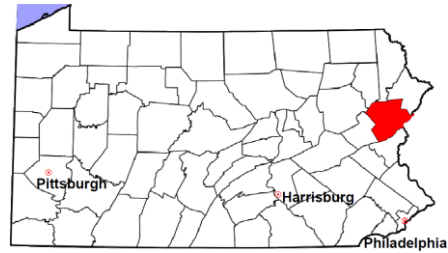


Monroe County

2011 Population Estimate: 169,882

Class of County: 4th

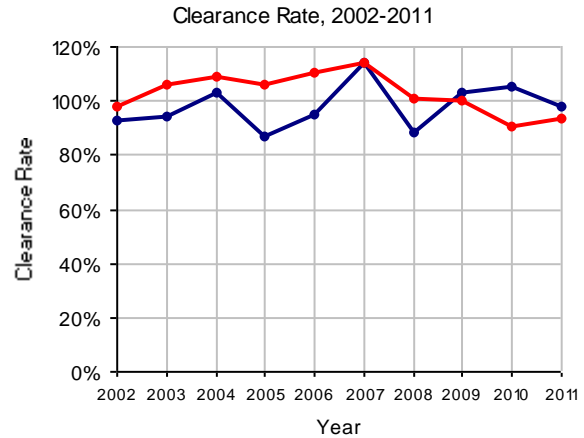
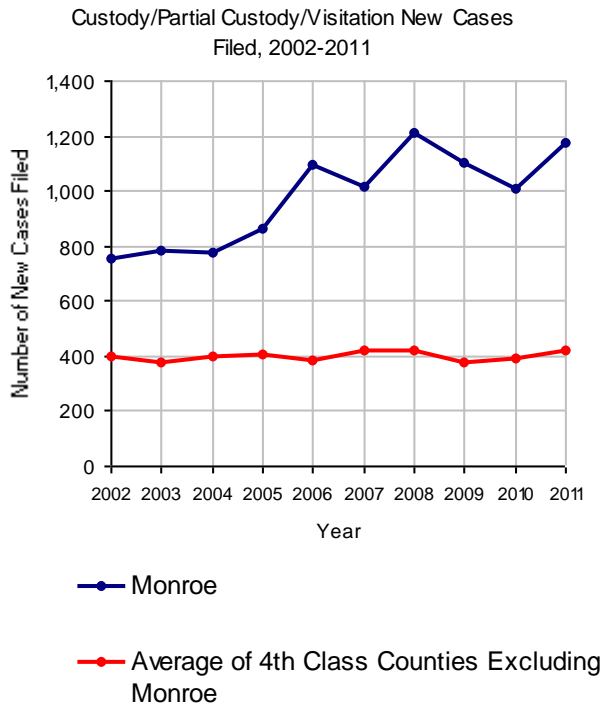
No. of Common Pleas Court Judgeships: 6



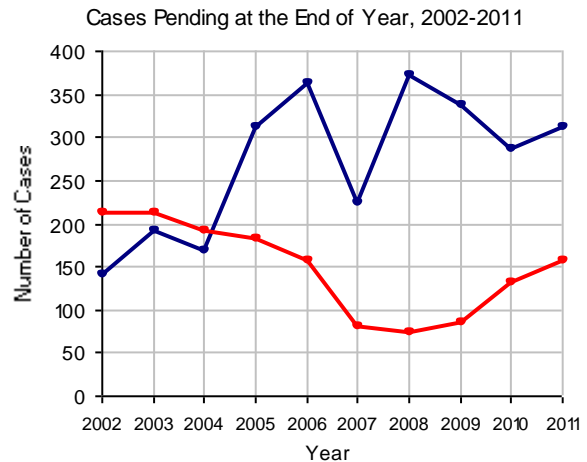
2011 Custody/Partial Custody/Visitation

No. of
Petitions

Cases Pending 1/1/2011	286
New Cases Filed in 2011	1,173
Cases Available for Processing	1,459
Processed By:	
Judge	140 12.2%
Non-Judicial Officer	894 77.9%
Other	113 9.9%
Cases Processed	1,147 100.0%
Cases Pending 12/31/2011	312

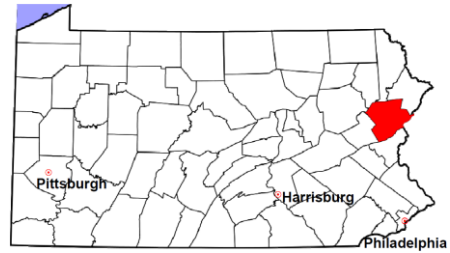


Note: Clearance Rate = Cases Processed / New Cases Filed



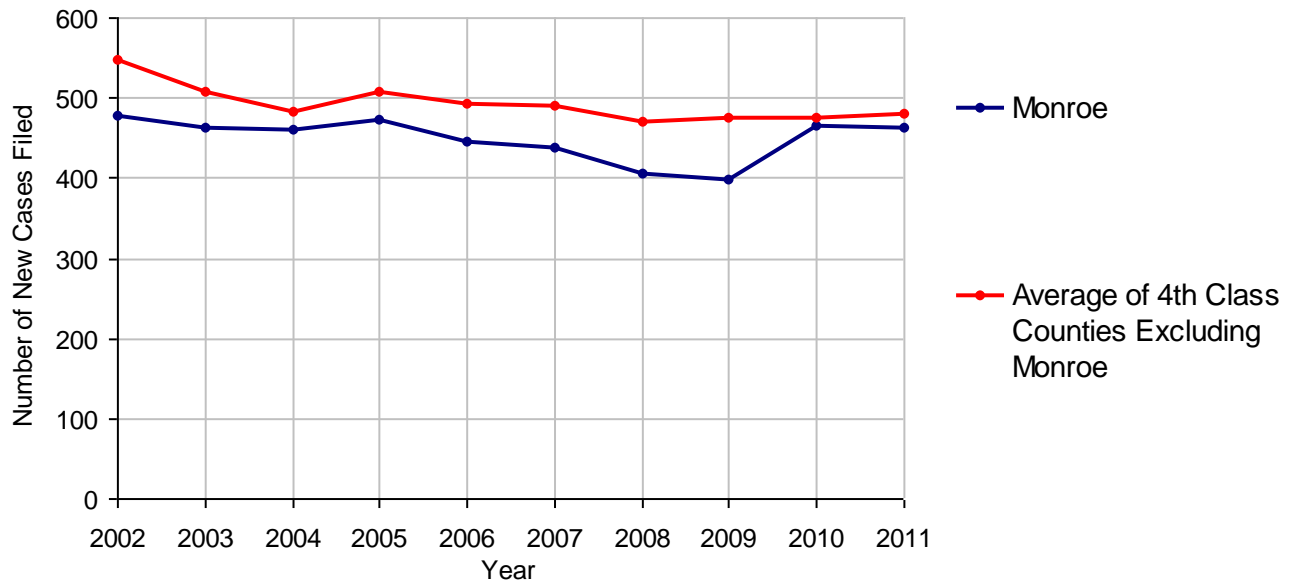
Monroe County

2011 Population Estimate: 169,882
 Class of County: 4th
 No. of Common Pleas Court Judgeships: 6



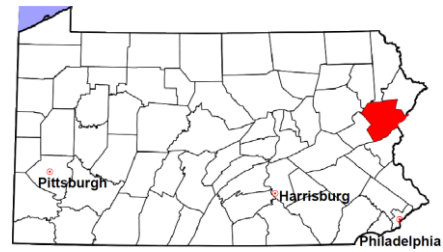
2011 Divorce	No. of Petitions	
Cases Pending 1/1/2011	1,112	
New Cases Filed in 2011	464	
Cases Available for Processing	1,576	
Processed By:		
Contested Before a Judge	125	31.3%
Contested Before a Master	79	19.8%
Uncontested	191	47.9%
Other	4	1.0%
Cases Processed	399	100.0%
Cases Pending 12/31/2011	1,177	

Divorce New Cases Filed, 2002-2011



Monroe County

2011 Population Estimate: 169,882
 Class of County: 4th
 No. of Common Pleas Court Judgeships: 6



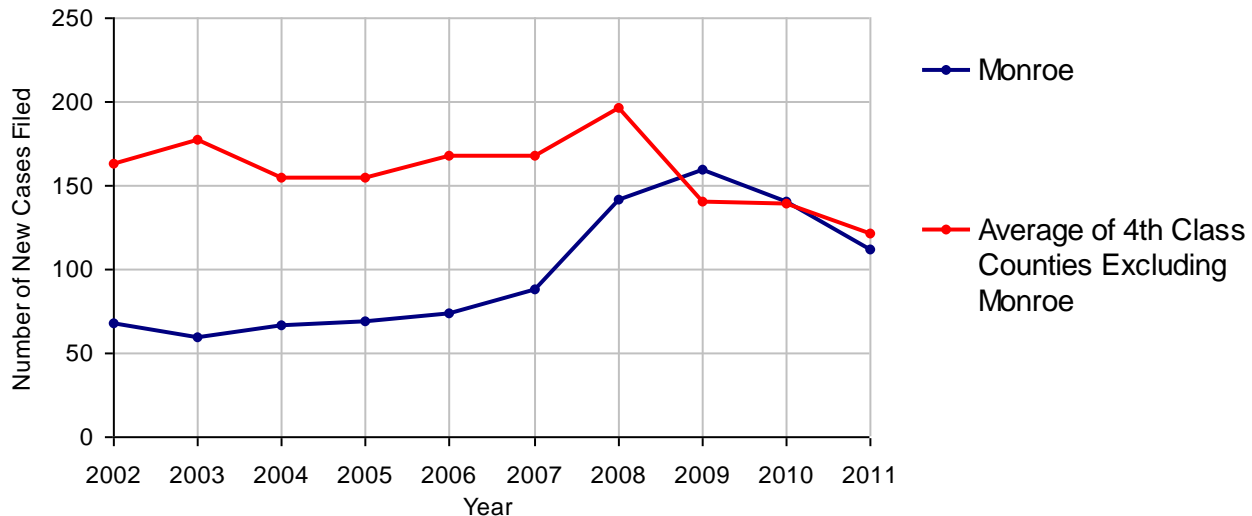
2011 Juvenile Dependency - Active Dependent Inventory



	Abuse/ Neglect	Status Offenses	Total
Cases Pending 1/1/2011	3	0	3
New Petitions Filed in 2011	111	1	112
Other	0	0	0
Total Petitions Available for Processing	114	1	115
Processed by:			
Adjudicated Dependent			
Judge	101	0	101
Master	0	0	0
Adjudicated NOT Dependent			
Judge	2	0	2
Master	0	0	0
Withdrawn/Dismissed/Inactive	0	0	0
Other	9	1	10
Total Petitions Processed	112	1	113
Cases Pending 12/31/2011	2	0	2

Data provided by CPCMS

Abuse/Neglect and Status Offenses New Cases Filed, 2002-2011



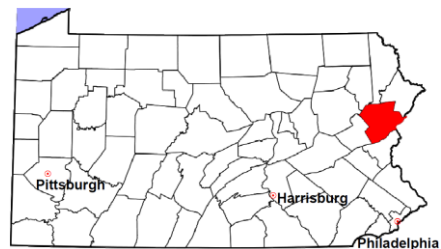
Note: Dependency data for 2002-2010 were collected manually. Dependency data for 2011 were provided by CPCMS.

Monroe County

2011 Population Estimate: 169,882

Class of County: 4th

No. of Common Pleas Court Judgeships: 6



2011 Juvenile Dependency - Adjudicated Dependent Inventory

	Abuse/ Neglect	Status Offenses	Total	
Cases Pending 1/1/2011	175	1	176	
New Adjudicated Dependent Cases	101	0	101	
Other	4	0	4	
Total Adjudicated Dependent Cases	280	1	281	
<u>Court Supervision Terminated:</u>				
Family Reunification	57	1	58	47.2%
Adoption	31	0	31	25.2%
Placement with a Relative/Guardian	12	0	12	9.8%
Aged Out	17	0	17	13.8%
Other Permanency Outcomes*	3	0	3	2.4%
Other**	2	0	2	1.6%
Total Adjudicated Dependent Cases Terminated	122	1	123	100.0%
Cases Pending 12/31/2011	158	0	158	

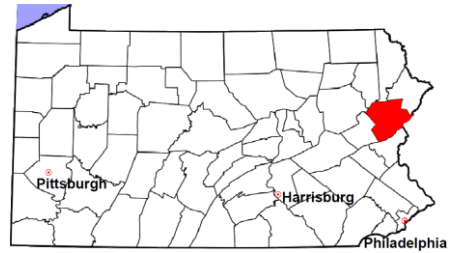
Data provided by CPCMS

* Other Permanency Outcomes include: adjudicated delinquent, death due to natural causes, emancipation, permanent living arrangement, and parent has come forward.

** Other includes cases where Court Supervision is terminated due to transfer out of jurisdiction, withdrawal and administrative closures.

Monroe County

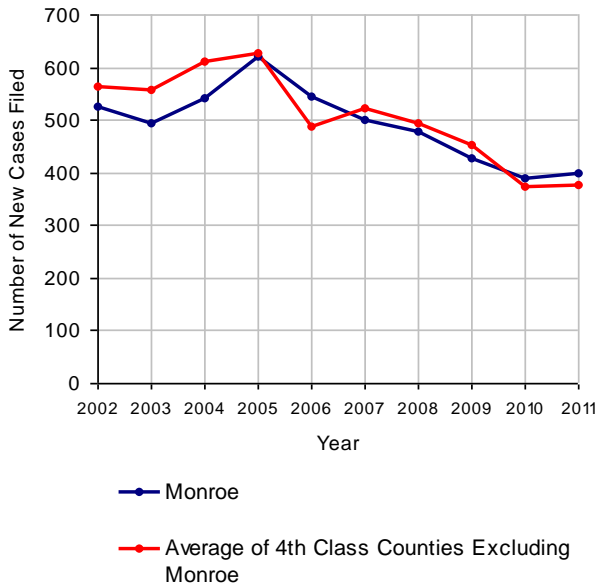
2011 Population Estimate: 169,882
 Class of County: 4th
 No. of Common Pleas Court Judgeships: 6



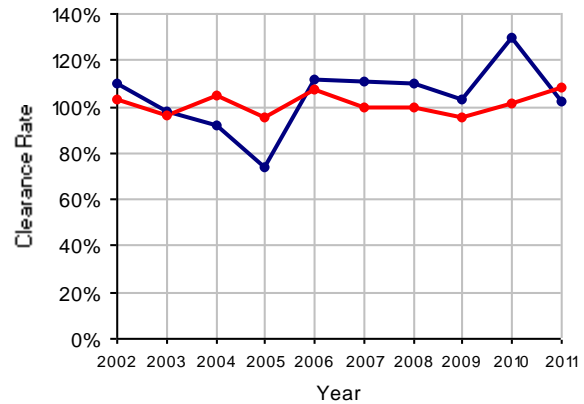
2011 Juvenile Delinquency

	No. of Cases
Cases Pending 1/1/2011	116
New Cases Filed in 2011	399
Cases Available for Processing	515
Processed By:	
Judge	177 43.3%
Non-Judicial Officer	183 44.7%
Other	49 12.0%
Cases Processed	409 100.0%
Cases Pending 12/31/2011	106

Juvenile Delinquency New Cases Filed, 2002-2011

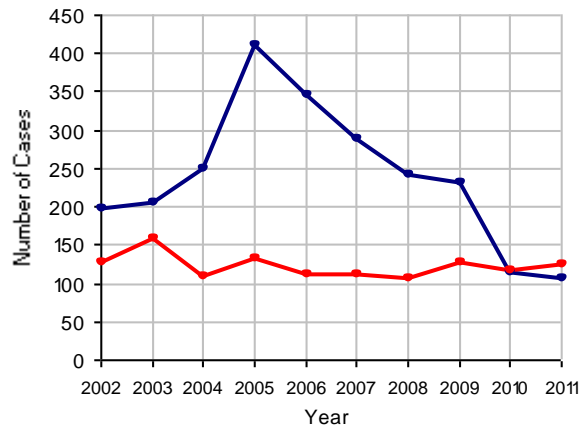


Clearance Rate, 2002-2011



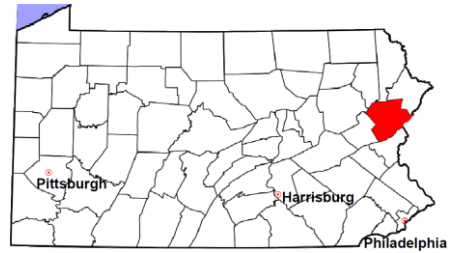
Note: Clearance Rate = Cases Processed / New Cases Filed

Cases Pending at the End of Year, 2002-2011



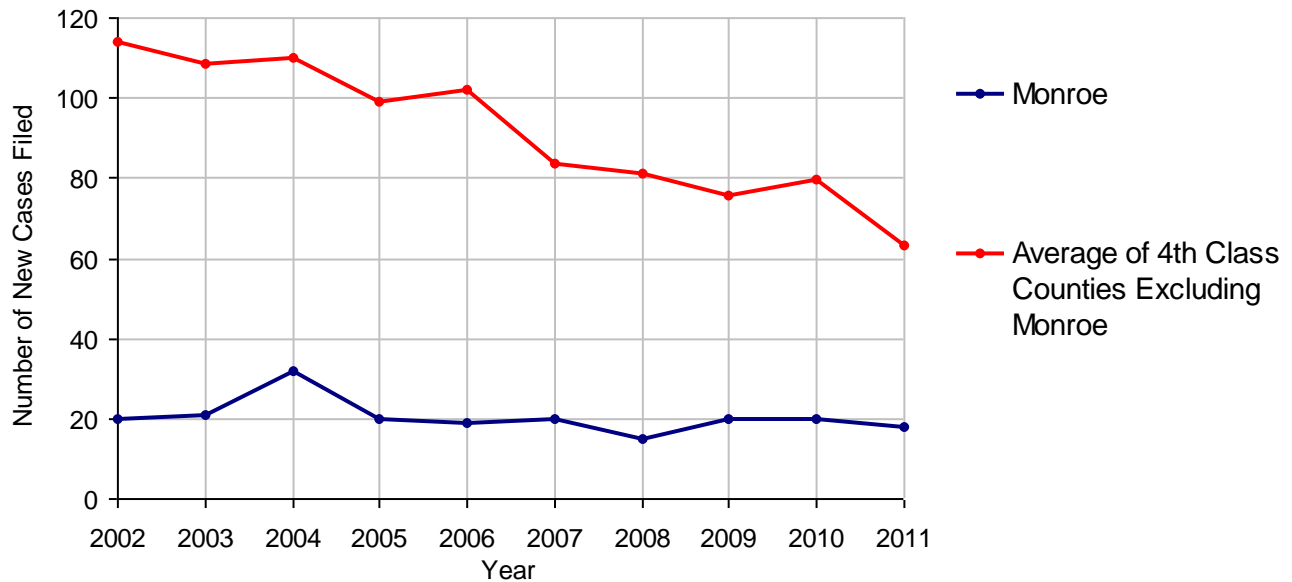
Monroe County

2011 Population Estimate: 169,882
 Class of County: 4th
 No. of Common Pleas Court Judgeships: 6



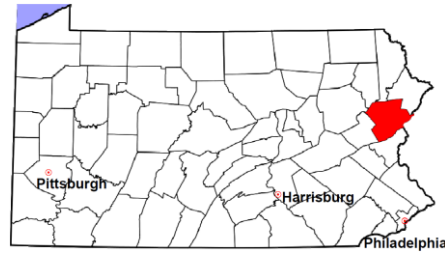
2011 Accounts	No. of Cases	
Cases Pending 1/1/2011	16	
New Cases Filed in 2011	18	
Cases Available for Processing	34	
Processed By:		
Contested before a Judge	6	21.4%
Contested before a Non-judicial Officer	0	
Uncontested	22	78.6%
Other	0	
Cases Processed	28	100.0%
Cases Pending 12/31/2011	6	

Accounts New Cases Filed, 2002-2011



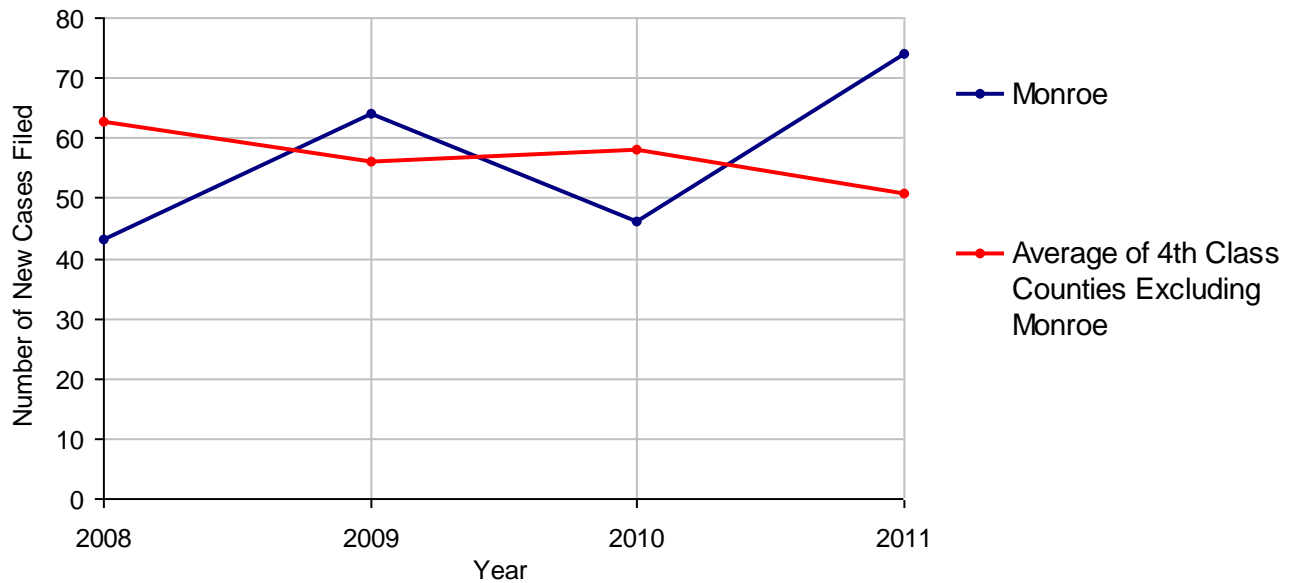
Monroe County

2011 Population Estimate: 169,882
 Class of County: 4th
 No. of Common Pleas Court Judgeships: 6



2011 Adoptions		No. of Cases	
Cases Pending 1/1/2011		3	
New Cases Filed in 2011		74	
Cases Available for Processing		77	
Processed By:			
Contested before a Judge	Granted	3	4.3%
	Denied	0	
Uncontested	Granted	61	87.1%
	Denied	2	2.9%
Other		4	5.7%
Cases Processed		70	100.0%
Cases Pending 12/31/2011		7	

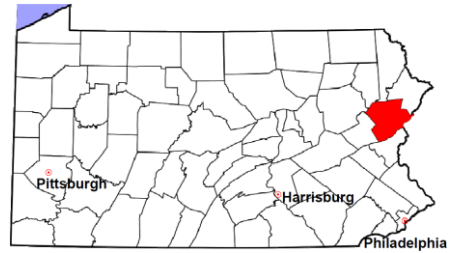
Adoptions New Cases Filed, 2008-2011



Note: Prior to 2008, each petition was counted as one new case, regardless of the number of children listed on the petition. Starting in 2008, each child listed on a petition is counted as a separate case. Therefore, statistics for the years since 2008 should not be compared to those for the years prior to 2008.

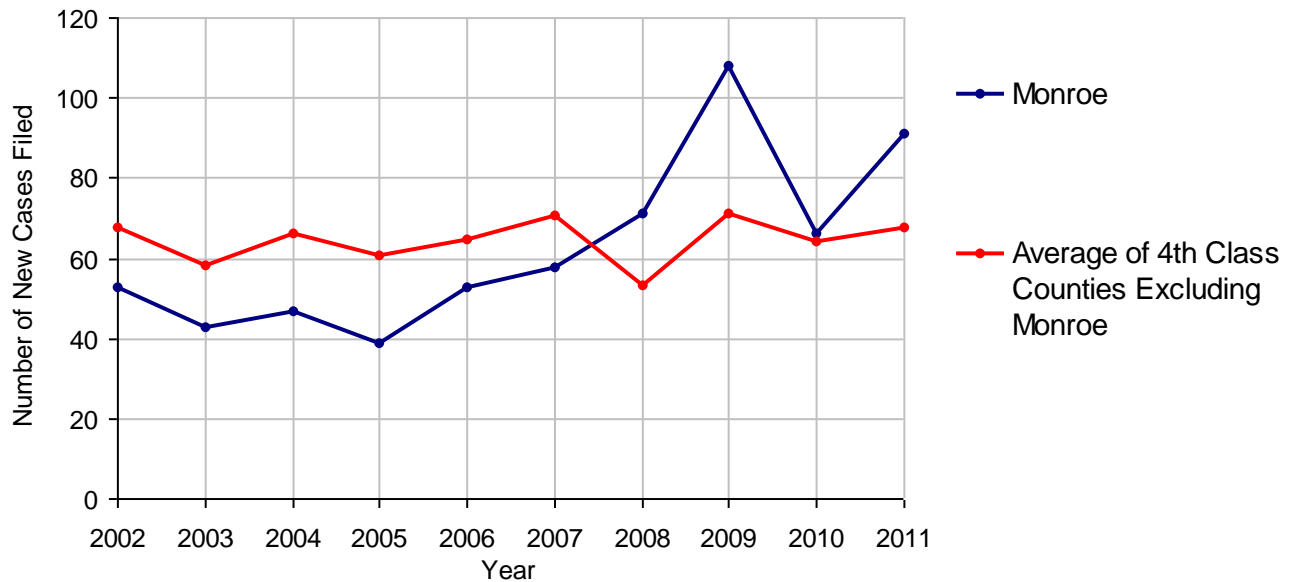
Monroe County

2011 Population Estimate: 169,882
 Class of County: 4th
 No. of Common Pleas Court Judgeships: 6



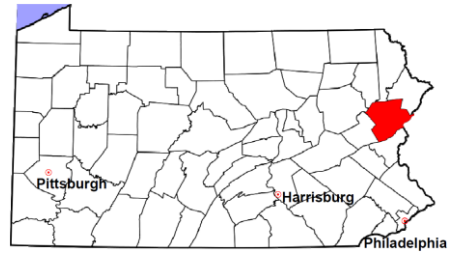
2011 Relinquishments/Terminations	No. of Cases
Cases Pending 1/1/2011	14
New Cases Filed in 2011	91
Cases Available for Processing	105
Processed By:	
Contested before a Judge	2 2.9%
Uncontested	56 81.2%
Other	11 15.9%
Cases Processed	69 100.0%
Cases Pending 12/31/2011	36

Relinquishments/Terminations New Cases Filed, 2002-2011



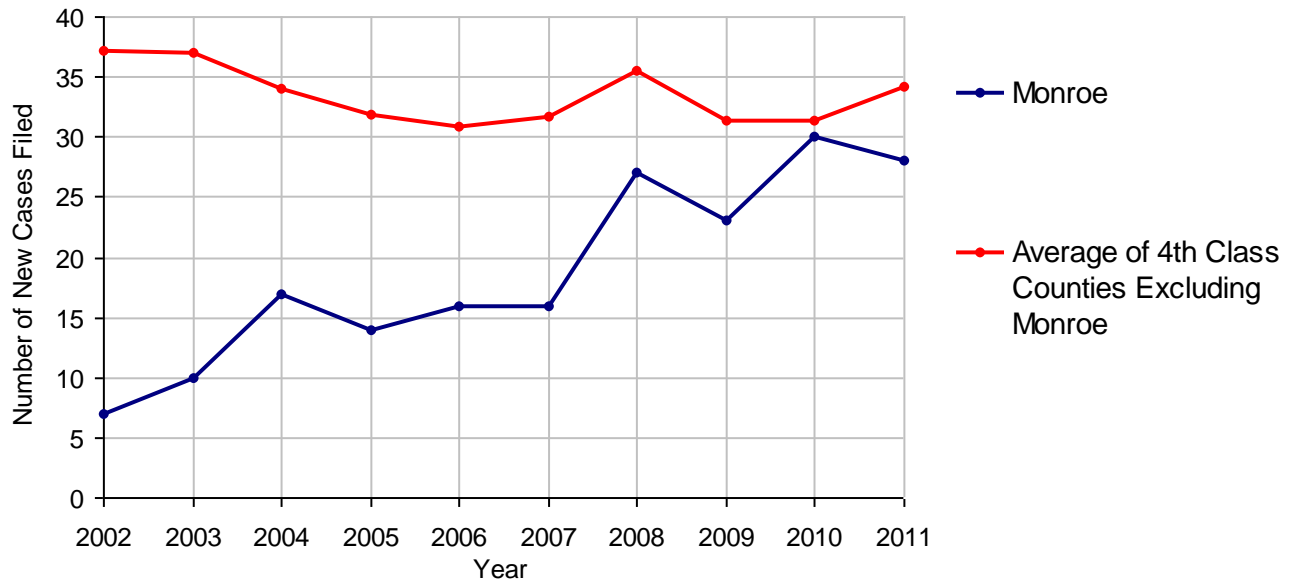
Monroe County

2011 Population Estimate: 169,882
 Class of County: 4th
 No. of Common Pleas Court Judgeships: 6



2011 Appointment of Guardians	No. of Cases
Cases Pending 1/1/2011	4
New Cases Filed in 2011	28
Cases Available for Processing	32
Processed By:	
Contested before a Judge	1 3.4%
Uncontested	24 82.8%
Other	4 13.8%
Cases Processed	29 100.0%
Cases Pending 12/31/2011	3

Appointment of Guardians New Cases Filed, 2002-2011

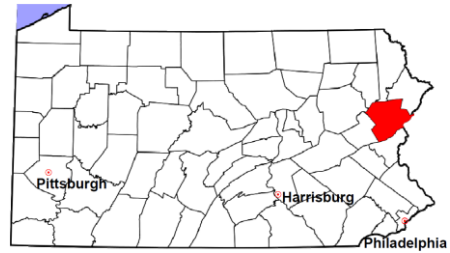


Monroe County

2011 Population Estimate: 169,882

Class of County: 4th

No. of Common Pleas Court Judgeships: 6



2011 Jury Activity and Performance Measures

A. Juror Days	2,175	
B. Number Sent to Voir Dire	2,197	
Voir Dire Attendance Rate (B/A * 100)		101.0%
C. Number of Jurors Selected	786	
Juror Selection Rate (C/B * 100)		35.8%

Note: In mid-2011, AOPC began utilizing the National Center for State Courts' Jury Managers' Toolbox for collecting jury data. This has resulted in limited jury performance measures being reported for 2011. Additional data will be available in 2012.