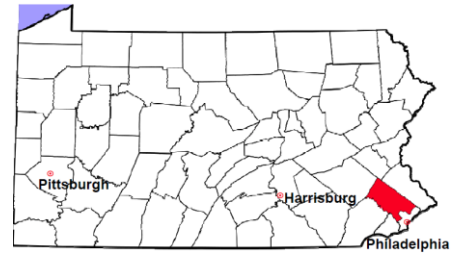


# Montgomery County

2011 Population Estimate: 804,210  
 Class of County: 2A  
 No. of Common Pleas Court Judgeships: 23

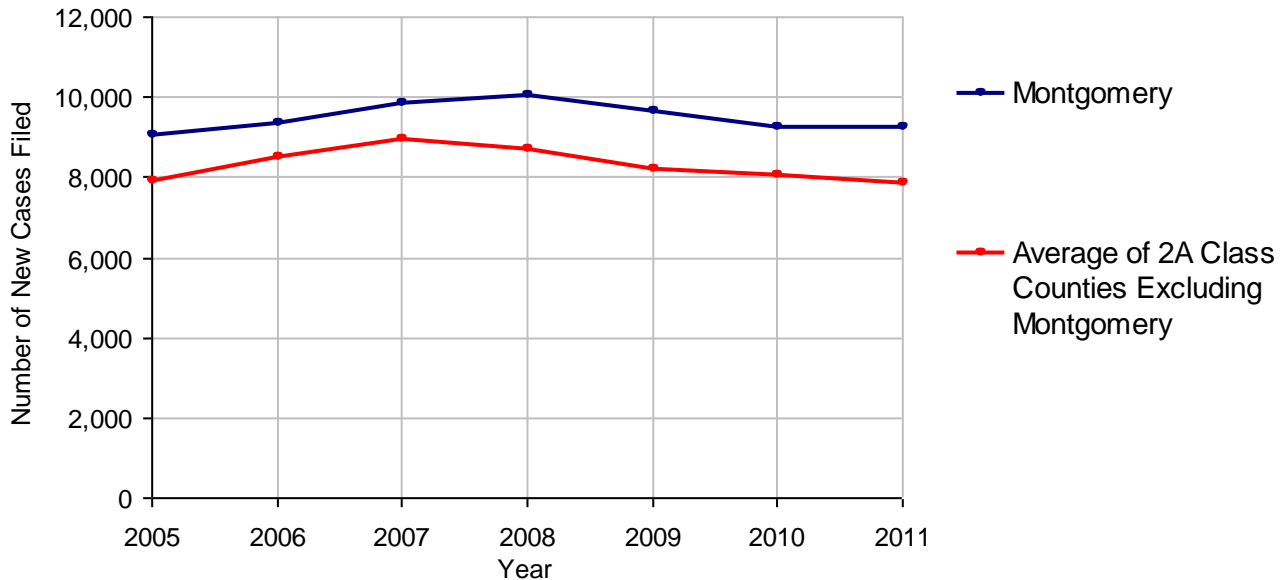


<b>2011 Criminal</b>	<b>No. of Cases</b>	
Cases Pending 1/1/2011	4,534	
New Cases Filed in 2011	9,304	
Reopened Cases	489	
<b>Cases Available for Disposition</b>	<b>14,327</b>	
<b>Disposed by:</b>		
Withdrawn/Dismissed	192	2.1%
ARD	1,671	18.5%
Guilty Plea	6,413	71.1%
Non-Jury Trial	98	1.1%
Jury Trial	39	0.4%
Inactive	510	5.7%
Other	100	1.1%
<b>Total Cases Disposed</b>	<b>9,023</b>	<b>100.0%</b>
<b>Cases Pending 12/31/2011</b>	<b>5,304</b>	
Cases Awaiting Sentencing	331	

<b>Age of Pending Cases as of 12/31/2011</b>		
0-60 Days	1,641	30.9%
61-120 Days	1,194	22.5%
121-180 Days	891	16.8%
181-240 Days	545	10.3%
241-300 Days	373	7.0%
301-360 Days	223	4.2%
Over 360 Days	437	8.2%
<b>Total</b>	<b>5,304</b>	<b>100.0%</b>

Data provided by CPCMS

**Criminal New Cases Filed, 2005-2011**

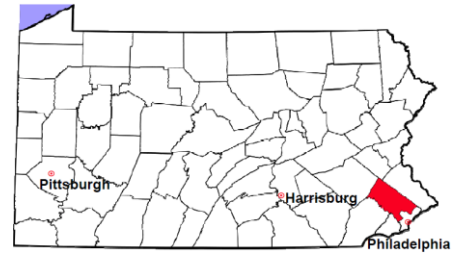


# Montgomery County

2011 Population Estimate: 804,210

Class of County: 2A

No. of Common Pleas Court Judgeships: 23



## 2011 Criminal - New Cases by Case Type



Case Type	Felony	Misdemeanor	Summary /Ungraded	Total
Person	456	710	2	1,168
Property	1,379	1,364	13	2,756
Drug	478	1,161	0	1,639
Weapon	80	31	0	111
Public Order	239	524	7	770
Motor Vehicle - DWI/DUI	0	2,807	0	2,807
Motor Vehicle - Other	1	49	0	50
Other	2	1	0	3
<b>Total</b>	<b>2,635</b>	<b>6,647</b>	<b>22</b>	<b>9,304</b>
	<b>28.3%</b>	<b>71.4%</b>	<b>0.2%</b>	<b>100.0%</b>

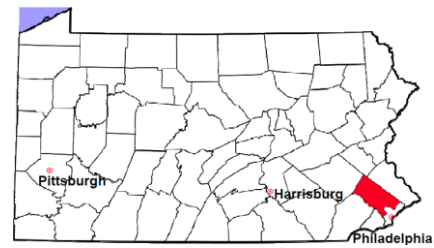
Data provided by CPCMS

# Montgomery County

2011 Population Estimate: 804,210

Class of County: 2A

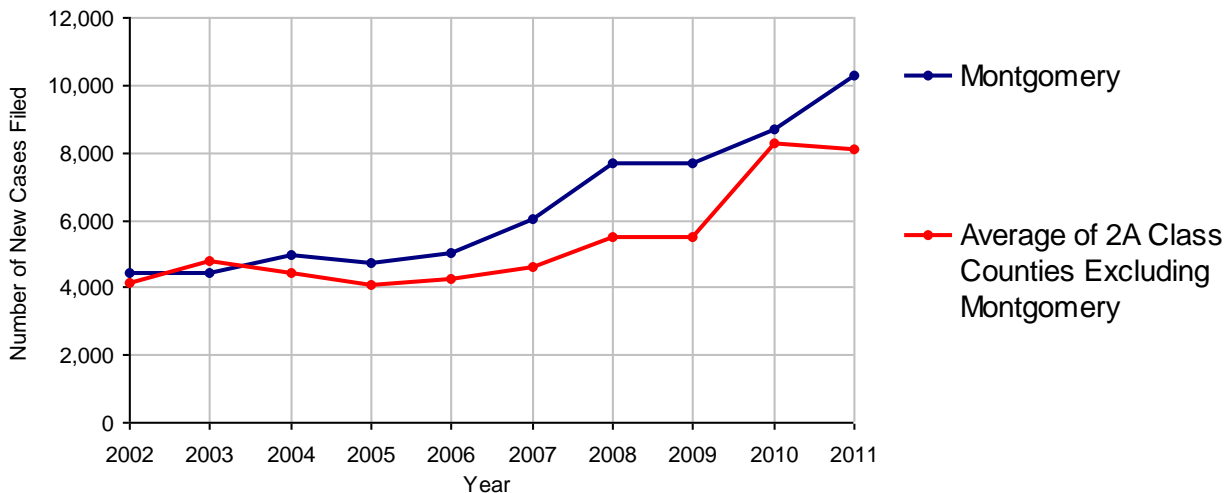
No. of Common Pleas Court Judgeships: 23



<b>2011 Civil</b>	<b>Civil Action</b>	<b>Other</b>	<b>Total</b>
Cases Pending 1/1/2011	10,041	2,956	12,997
Docketed Cases	7,028	3,284	10,312
Arbitration Appeals	96	9	105
Transferred In	72	3	75
Returned to Active	73	25	98
<b>Cases Available for Processing</b>	<b>17,310</b>	<b>6,277</b>	<b>23,587</b>
Disposed By:			
Default Judgments	2,191	935	3,126
Cases Decided by Arbitration Board	349	28	377
Dispositive Motions	3	1	4
Settlements	2,577	503	3,080
Moved to Inactive Status	0	0	0
Transferred/Withdrawn	322	94	416
Pa.R.J.A. 1901 Administrative Purge	496	127	623
Other	526	2	528
Jury Trial	26	0	26
Non-Jury Trial	8	1	9
<b>Total Cases Disposed</b>	<b>6,498</b>	<b>1,691</b>	<b>8,189</b>
<b>Cases Pending 12/31/2011</b>	<b>10,812</b>	<b>4,586</b>	<b>15,398</b>

Age of Pending Cases as of 12/31/2011 (Civil Action Only)		
0-6 months	3,040	28.1%
7-12 months	1,912	17.7%
13-18 months	1,216	11.2%
19-24 months	916	8.5%
25-30 months	925	8.6%
31-36 months	815	7.5%
37-42 months	550	5.1%
43-48 months	330	3.1%
49-54 months	280	2.6%
55-60 months	260	2.4%
61-66 months	220	2.0%
67-72 months	163	1.5%
Over 72 months	185	1.7%
<b>Total</b>	<b>10,812</b>	<b>100.0%</b>

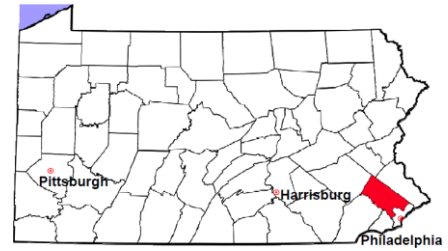
Docketed Cases, 2002-2011



Note: Prior to June 2010, docketed cases under the "Other" category were not reported. The reporting of these cases starting from June 2010 may contribute to an increase in docketed cases from 2009 to 2010.

# Montgomery County

2011 Population Estimate: 804,210  
 Class of County: 2A  
 No. of Common Pleas Court Judgeships: 23



## 2011 Civil - Docketed Cases Listed by Case Type

### TORT (does not include mass tort)

Intentional	52
Malicious Prosecution	10
Motor Vehicle	1,134
Nuisance	2
Premise Liability	362
Product Liability	29
Slander/Libel/Defamation	16
Other	292

### MASS TORT

Asbestos	1
Tobacco	0
Toxic Tort - DES	0
Toxic Tort - Implant	0
Toxic Waste	0
Other	2

### PROFESSIONAL LIABILITY

Dental	14
Legal	14
Medical Malpractice	100
Other	35

### CONTRACT

(does not include judgments)

Buyer Plaintiff	86
Debt Collection:	
Credit Card	2,861
Debt Collection: Other	1,329
Employment Dispute:	
Discrimination	5
Employment Dispute: Other	53
Other	586

### REAL PROPERTY

Ejectment*	230
Eminent Domain/ Condemnation*	28
Ground Rent	2
Landlord/Tenant Dispute	43
Mortgage Forclosures:	
Residential*	1,505
Commercial*	41
Partition of Real Property*	13
Quiet Title*	47
Other*	51

### CIVIL APPEALS

*Administrative Agencies*

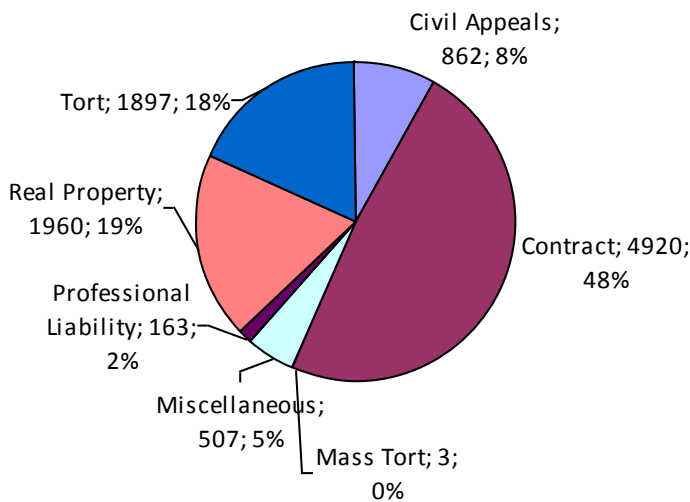
Board of Assessment*	40
Board of Elections*	123
Dept. of Transportation*	328
Zoning Board*	24
Statutory Appeal - Other*	26
Other*	321

### MISCELLANEOUS

Common Law/ Statutory Arbitration*	9
Declaratory Judgment*	50
Mandamus*	9
Non-Domestic Relations Restraining Order*	5
Quo Warranto*	0
Replevin*	30
Other*	404

**TOTAL DOCKETED CASES: 10,312**

\* Civil Other



### Of the Docketed Cases:

Pro Se Filings:	101	1.0%
Class Action Suits:	13	0.1%
MDJ Appeals:	240	2.3%

# Montgomery County

2011 Population Estimate: 804,210  
 Class of County: 2A  
 No. of Common Pleas Court Judgeships: 23



## 2011 Protection From Abuse

**No. of  
Petitions**

Cases Pending 1/1/2011 311

New Cases Filed in 2011 1,649

*Of these, Petitions Requesting Temporary Orders: 1,649 (100.0%)*

*Temporary Orders DENIED: 185 (11.2%), Temporary Orders GRANTED: 1,464 (88.8%)*

**Cases Available for Processing 1,960**

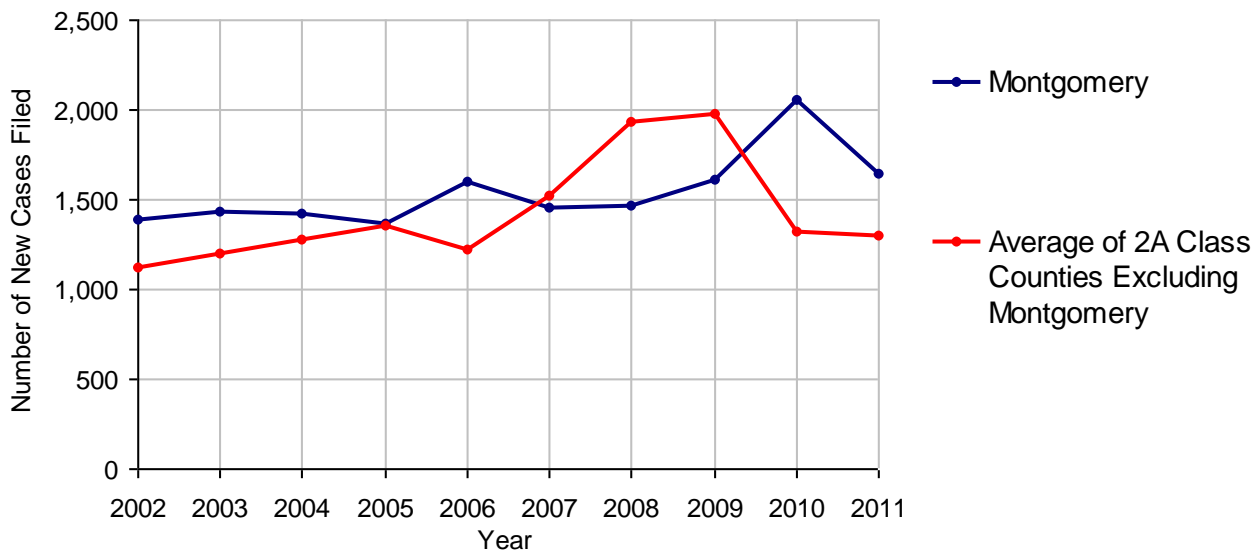
Processed By:

Temporary Order DENIED After Ex Parte Hearing and No Evidentiary Hearing Scheduled	102	6.1%
Temporary Order DISMISSED After Evidentiary Hearing and No Final Order Entered	0	
Final Order DENIED After Evidentiary Hearing Before a Judge	175	10.4%
Final Order GRANTED After Evidentiary Hearing Before a Judge	198	11.8%
Plaintiff Did Not Appear For Evidentiary Hearing	347	20.6%
Final Order by STIPULATION OR AGREEMENT Between the Parties	363	21.5%
Petition WITHDRAWN by Plaintiff	484	28.7%
TRANSFERRED to Another Jurisdiction	0	
DECEASED Party	0	
Other	16	0.9%

**Cases Processed 1,685 100.0%**

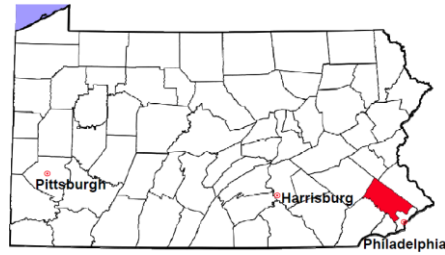
**Cases Pending 12/31/2011 275**

**PFA New Cases Filed, 2002-2011**



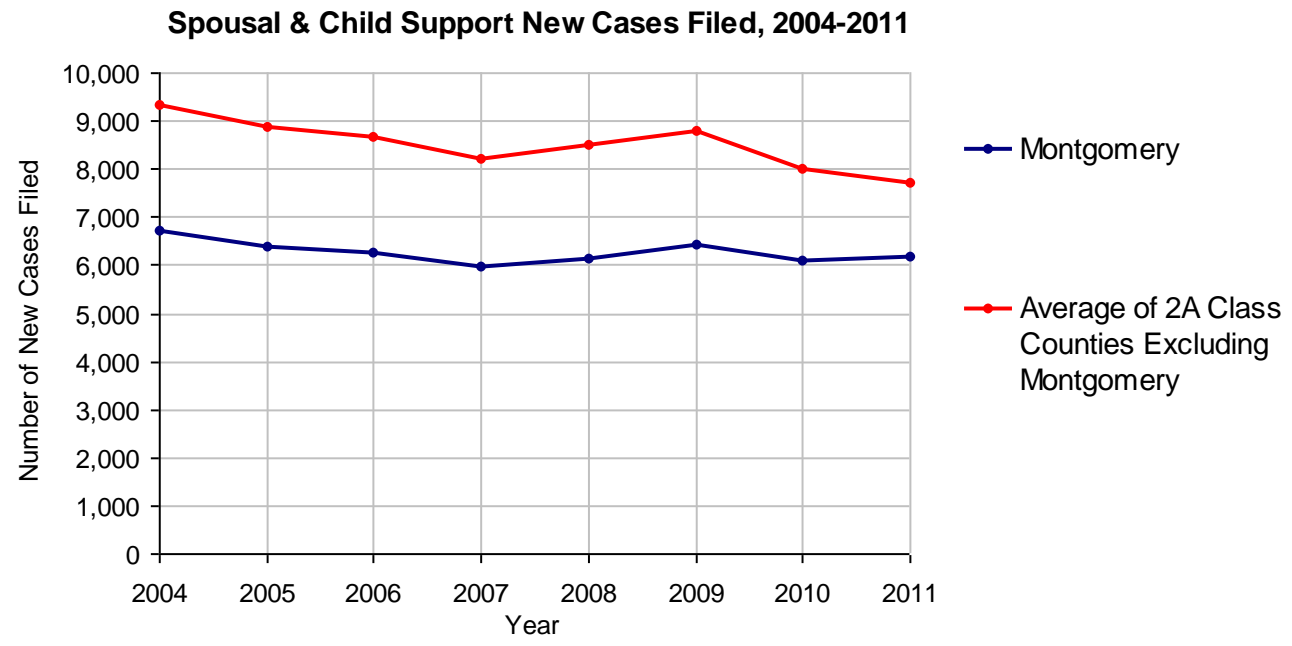
# Montgomery County

2011 Population Estimate: 804,210  
 Class of County: 2A  
 No. of Common Pleas Court Judgeships: 23



<b>2011 Spousal &amp; Child Support</b>	<b>No. of Petitions</b>	
Cases Pending 1/1/2011	1,623	
New Cases Filed in 2011	6,180	
Dockets Transferred In (+)	84	
Dockets Transferred Out (-)	79	
<b>Cases Available for Processing</b>	<b>7,808</b>	
Processed By:		
Judge	322	5.1%
Intake Officer	4,098	65.5%
Hearing Officer	1,803	28.8%
Other	36	0.6%
<b>Cases Processed</b>	<b>6,259</b>	<b>100.0%</b>
<b>Cases Pending 12/31/2011</b>	<b>1,549</b>	

Note. "Exceptions" from a Master/Conference Officer are not reported by PACSES.

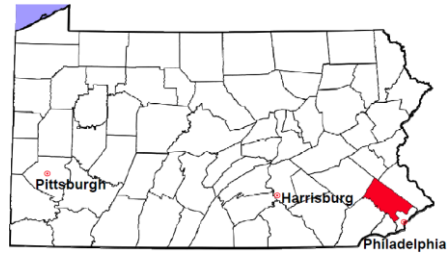


# Montgomery County

2011 Population Estimate: 804,210

Class of County: 2A

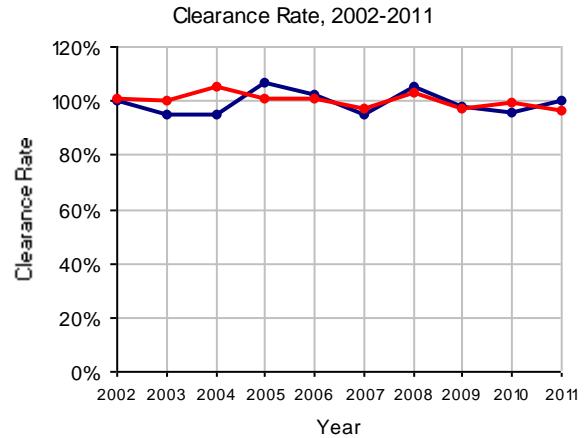
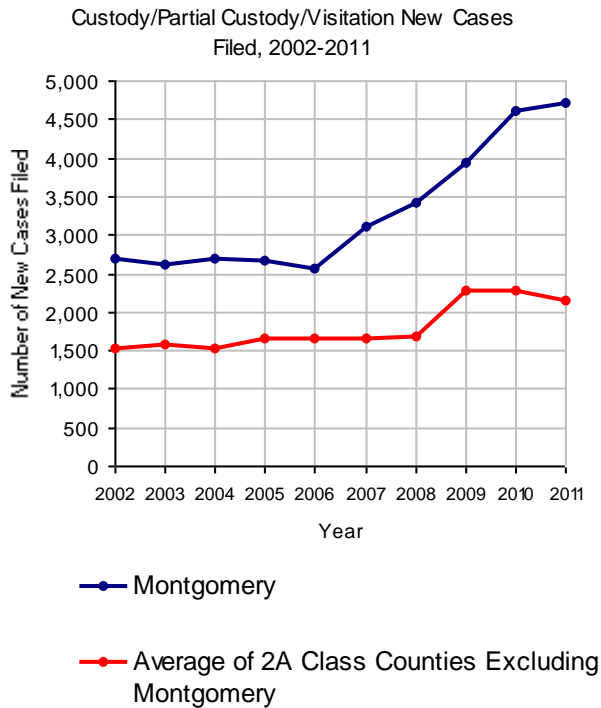
No. of Common Pleas Court Judgeships: 23



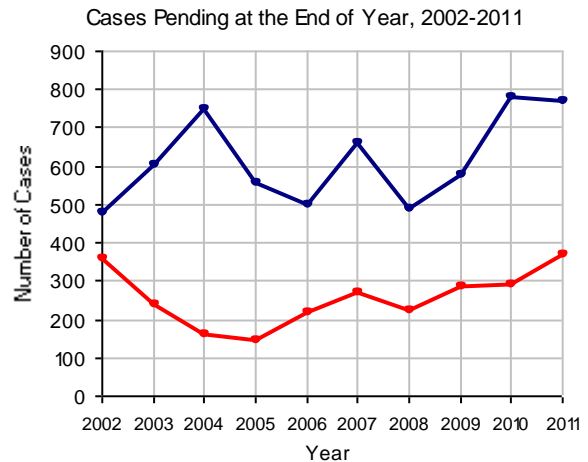
## 2011 Custody/Partial Custody/Visitation

No. of  
Petitions

Cases Pending 1/1/2011	778
New Cases Filed in 2011	4,718
<b>Cases Available for Processing</b>	<b>5,496</b>
Processed By:	
Judge	2,497 52.8%
Non-Judicial Officer	1,676 35.5%
Other	552 11.7%
<b>Cases Processed</b>	<b>4,725 100.0%</b>
<b>Cases Pending 12/31/2011</b>	<b>771</b>

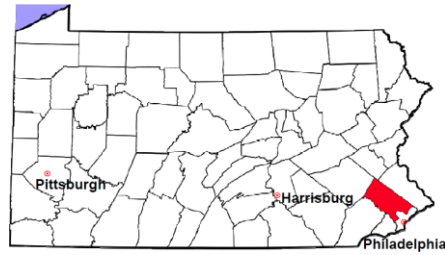


Note: Clearance Rate = Cases Processed / New Cases Filed



# Montgomery County

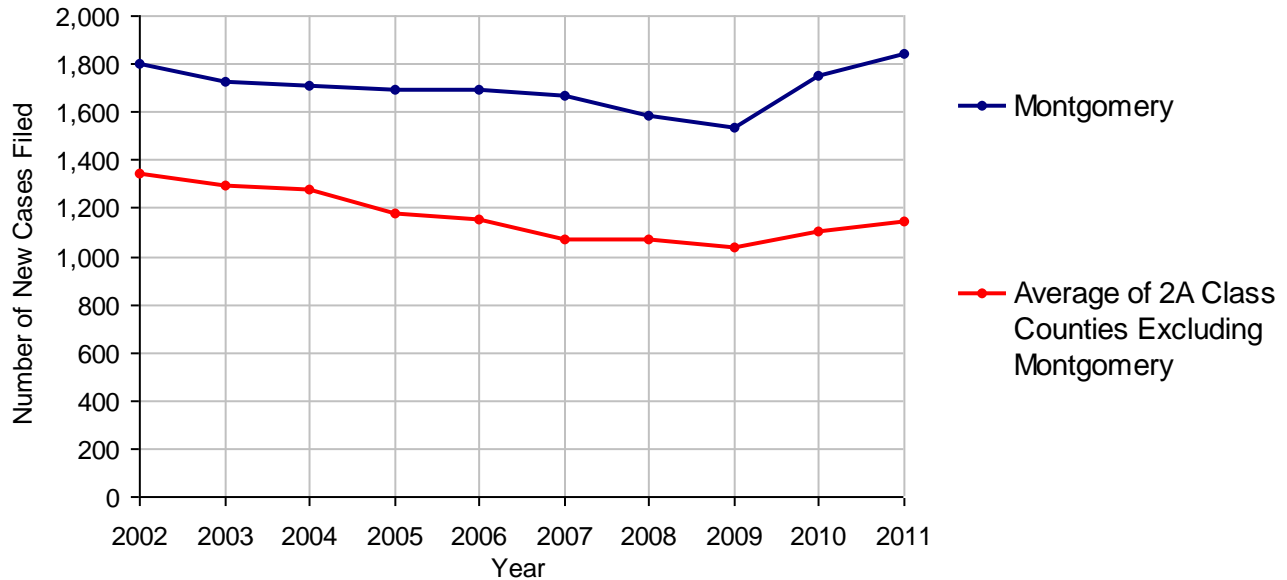
2011 Population Estimate: 804,210  
 Class of County: 2A  
 No. of Common Pleas Court Judgeships: 23



<b>2011 Divorce</b>	<b>No. of Petitions</b>	
Cases Pending 1/1/2011	2,704	
New Cases Filed in 2011	1,846	
<b>Cases Available for Processing</b>	<b>4,550</b>	
Processed By:		
Contested Before a Judge	0	
Contested Before a Master	0	
Uncontested	1,770 <sup>(O)</sup>	100.0%
Other	0	
<b>Cases Processed</b>	<b>1,770</b>	<b>100.0%</b>
<b>Cases Pending 12/31/2011</b>	<b>2,780</b>	

(O) - Overinclusive, includes cases in which a judge held an evidentiary hearing.

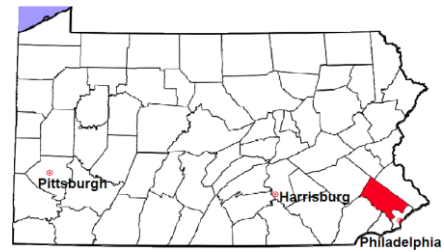
**Divorce New Cases Filed, 2002-2011**





# Montgomery County

2011 Population Estimate: 804,210  
 Class of County: 2A  
 No. of Common Pleas Court Judgeships: 23



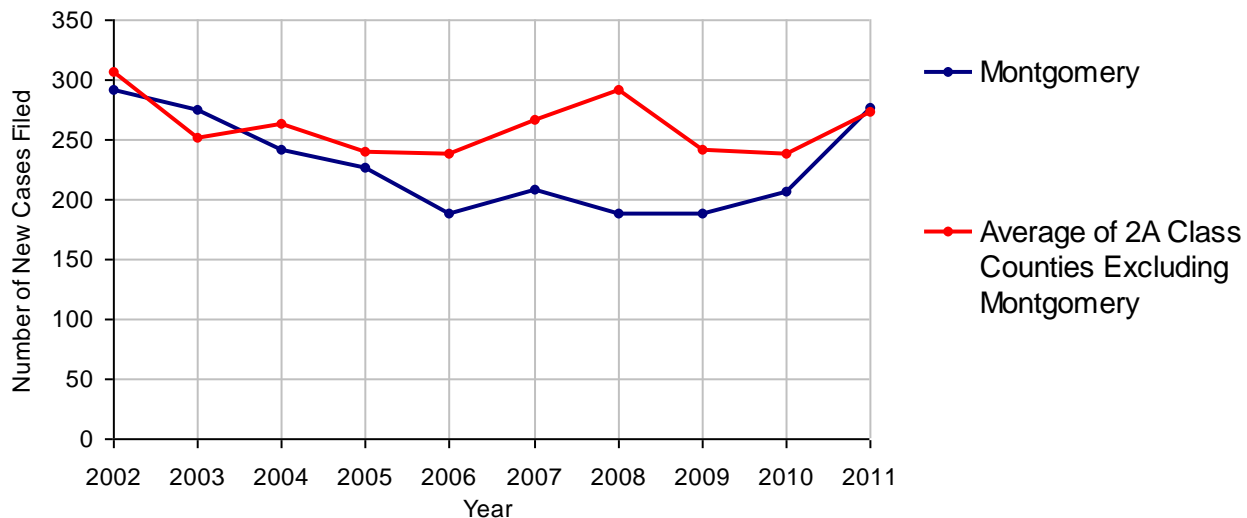
## 2011 Juvenile Dependency - Active Dependent Inventory



	Abuse/ Neglect	Status Offenses	Total
Cases Pending 1/1/2011	120	167	287
New Petitions Filed in 2011	223	54	277
Other	10	0	10
<b>Total Petitions Available for Processing</b>	<b>353</b>	<b>221</b>	<b>574</b>
Processed by:			
Adjudicated Dependent			
Judge	196	3	199
Master	9	0	9
Adjudicated NOT Dependent			
Judge	0	0	0
Master	0	0	0
Withdrawn/Dismissed/Inactive	0	0	0
Other	11	20	31
<b>Total Petitions Processed</b>	<b>216</b>	<b>23</b>	<b>239</b>
<b>Cases Pending 12/31/2011</b>	<b>137</b>	<b>198</b>	<b>335</b>

Data provided by CPCMS

Abuse/Neglect and Status Offenses New Cases Filed, 2002-2011



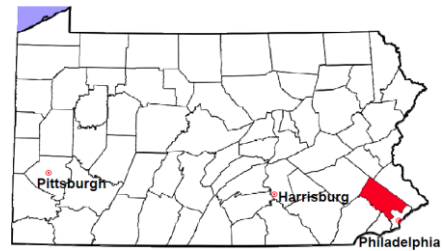
Note: Dependency data for 2002-2010 were collected manually. Dependency data for 2011 were provided by CPCMS.

# Montgomery County

2011 Population Estimate: 804,210

Class of County: 2A

No. of Common Pleas Court Judgeships: 23



## 2011 Juvenile Dependency - Adjudicated Dependent Inventory

	Abuse/ Neglect	Status Offenses	Total	
Cases Pending 1/1/2011	440	61	501	
New Adjudicated Dependent Cases	205	3	208	
Other	55	22	77	
<b>Total Adjudicated Dependent Cases</b>	<b>700</b>	<b>86</b>	<b>786</b>	
<b><u>Court Supervision Terminated:</u></b>				
Family Reunification	31	0	31	18.7%
Adoption	32	0	32	19.3%
Placement with a Relative/Guardian	60	0	60	36.1%
Aged Out	25	0	25	15.1%
Other Permanency Outcomes*	3	1	4	2.4%
Other**	13	1	14	8.4%
<b>Total Adjudicated Dependent Cases Terminated</b>	<b>164</b>	<b>2</b>	<b>166</b>	<b>100.0%</b>
<b>Cases Pending 12/31/2011</b>	<b>536</b>	<b>84</b>	<b>620</b>	

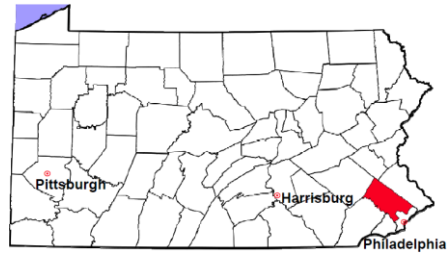
Data provided by CPCMS

\* Other Permanency Outcomes include: adjudicated delinquent, death due to natural causes, emancipation, permanent living arrangement, and parent has come forward.

\*\* Other includes cases where Court Supervision is terminated due to transfer out of jurisdiction, withdrawal and administrative closures.

# Montgomery County

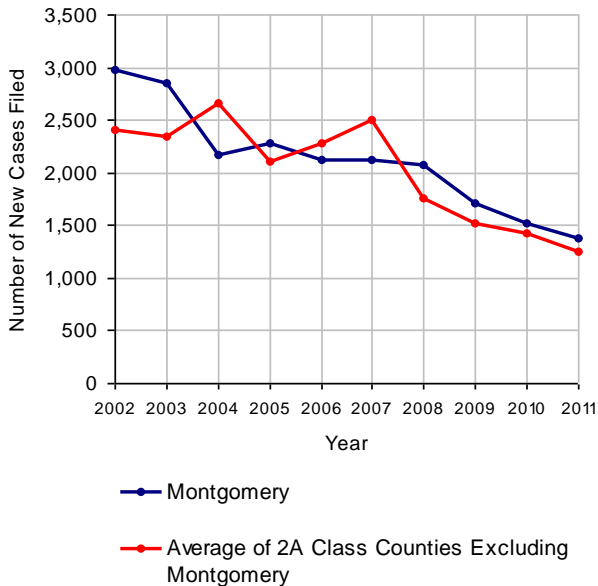
2011 Population Estimate: 804,210  
 Class of County: 2A  
 No. of Common Pleas Court Judgeships: 23



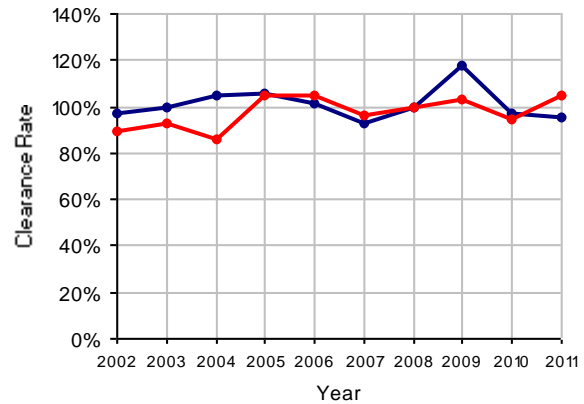
## 2011 Juvenile Delinquency

	No. of Cases
Cases Pending 1/1/2011	124
New Cases Filed in 2011	1,382
<b>Cases Available for Processing</b>	<b>1,506</b>
Processed By:	
Judge	1,004 76.1%
Non-Judicial Officer	316 23.9%
Other	0
<b>Cases Processed</b>	<b>1,320 100.0%</b>
<b>Cases Pending 12/31/2011</b>	<b>186</b>

Juvenile Delinquency New Cases Filed, 2002-2011

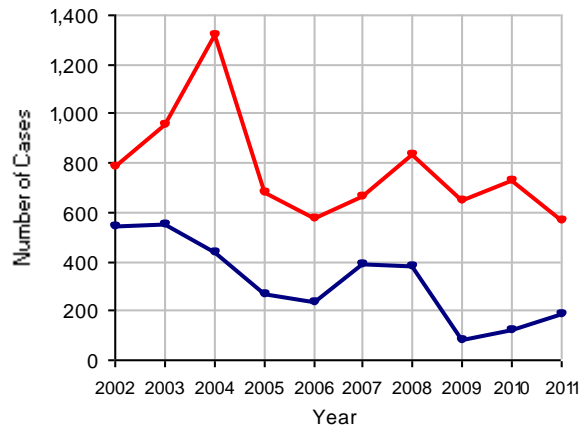


Clearance Rate, 2002-2011



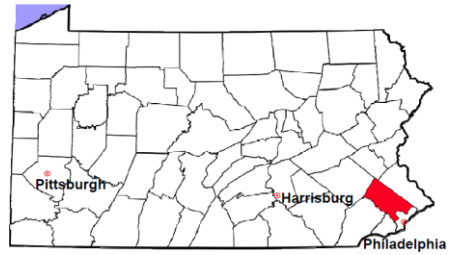
Note: Clearance Rate = Cases Processed / New Cases Filed

Cases Pending at the End of Year, 2002-2011



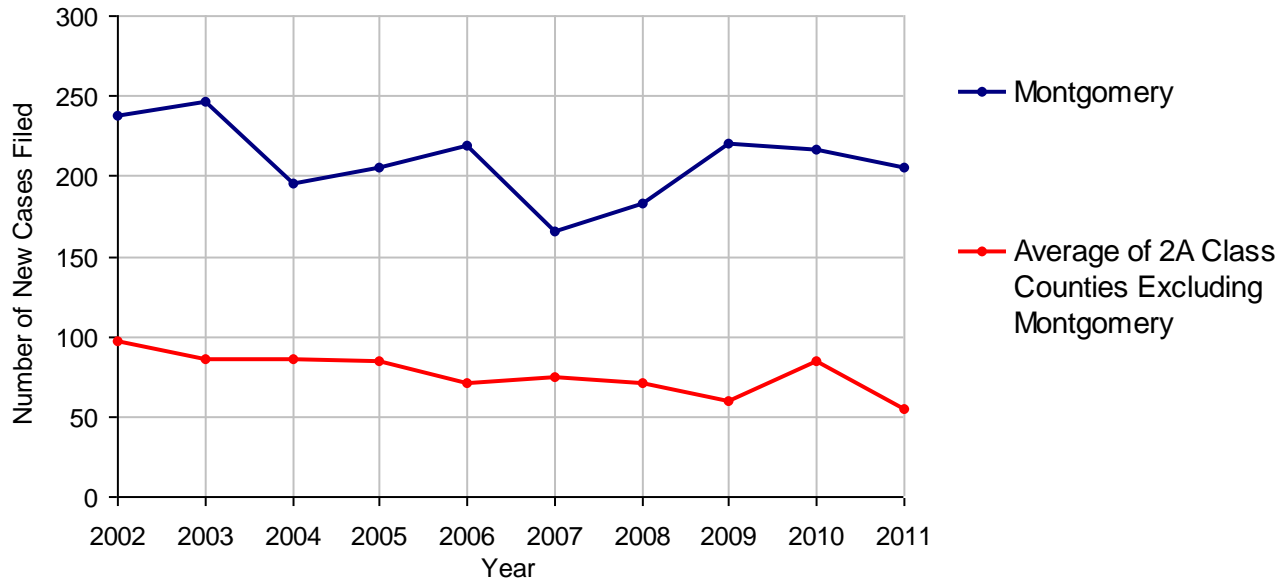
# Montgomery County

2011 Population Estimate: 804,210  
 Class of County: 2A  
 No. of Common Pleas Court Judgeships: 23



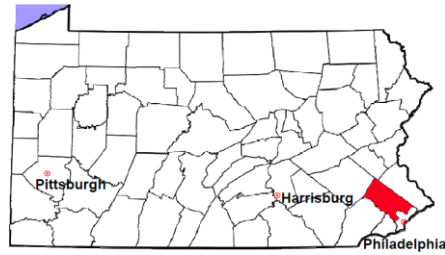
<b>2011 Accounts</b>	<b>No. of Cases</b>	
Cases Pending 1/1/2011	142	
New Cases Filed in 2011	205	
<b>Cases Available for Processing</b>	<b>347</b>	
Processed By:		
Contested before a Judge	82	31.7%
Contested before a Non-judicial Officer	0	
Uncontested	163	62.9%
Other	14	5.4%
<b>Cases Processed</b>	<b>259</b>	<b>100.0%</b>
<b>Cases Pending 12/31/2011</b>	<b>88</b>	

**Accounts New Cases Filed, 2002-2011**



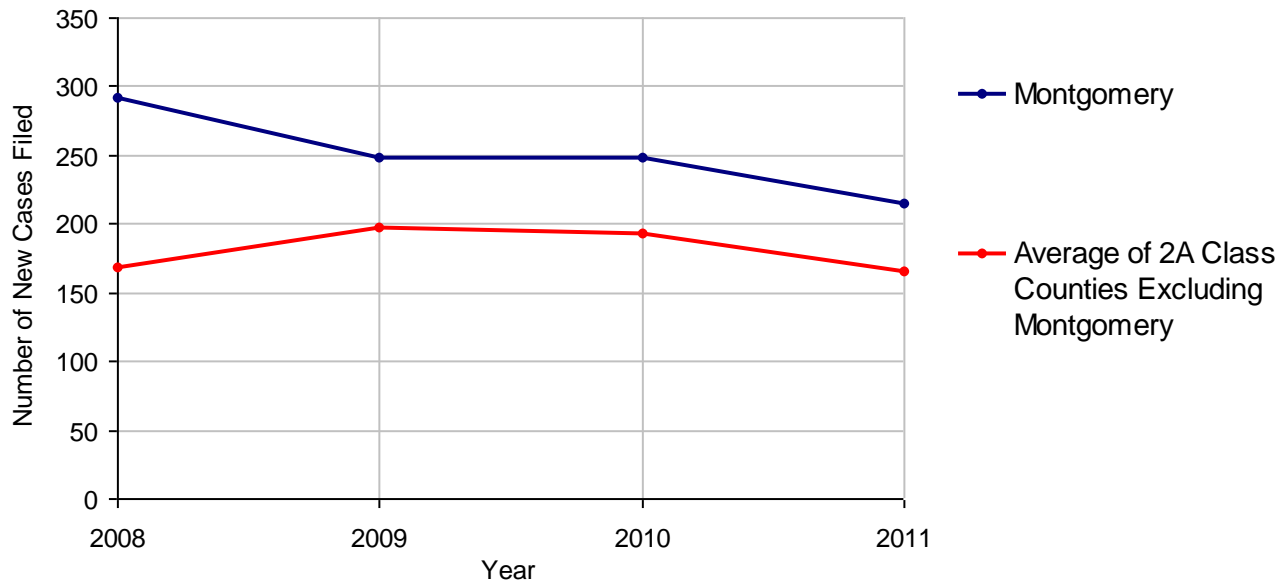
# Montgomery County

2011 Population Estimate: 804,210  
 Class of County: 2A  
 No. of Common Pleas Court Judgeships: 23



<b>2011 Adoptions</b>		<b>No. of Cases</b>	
Cases Pending 1/1/2011		7	
New Cases Filed in 2011		215	
<b>Cases Available for Processing</b>		<b>222</b>	
Processed By:			
Contested before a Judge	Granted	0	
	Denied	0	
Uncontested	Granted	215	100.0%
	Denied	0	
Other		0	
<b>Cases Processed</b>		<b>215</b>	<b>100.0%</b>
<b>Cases Pending 12/31/2011</b>		<b>7</b>	

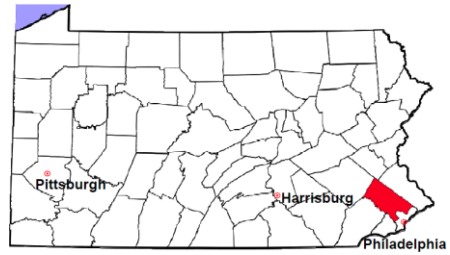
**Adoptions New Cases Filed, 2008-2011**



Note: Prior to 2008, each petition was counted as one new case, regardless of the number of children listed on the petition. Starting in 2008, each child listed on a petition is counted as a separate case. Therefore, statistics for the years since 2008 should not be compared to those for the years prior to 2008.

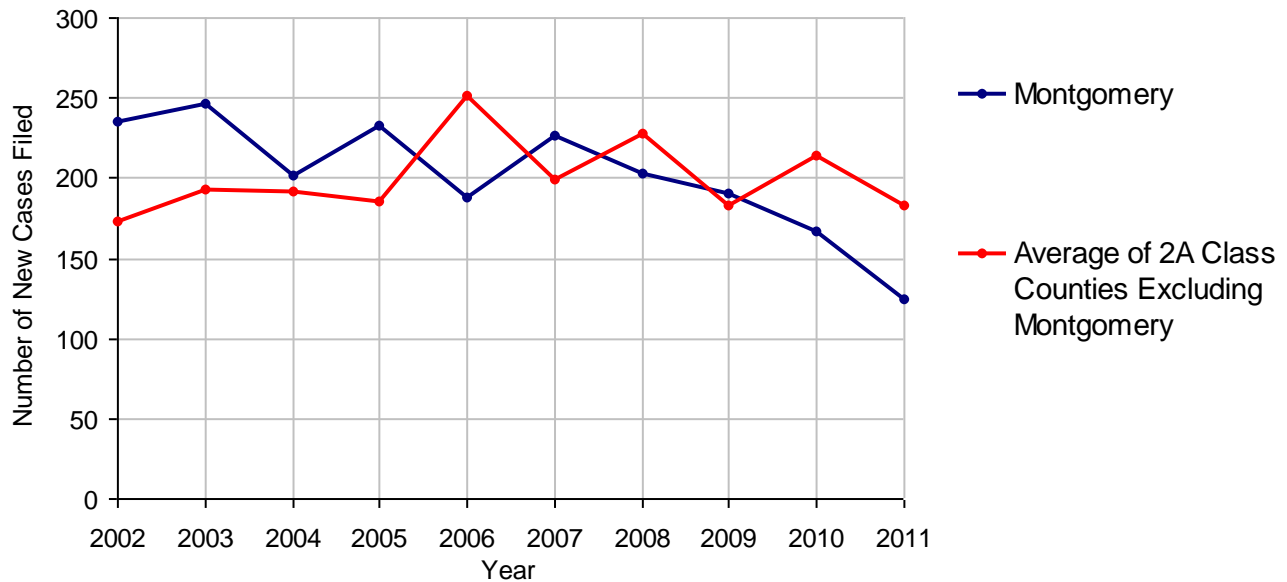
# Montgomery County

2011 Population Estimate: 804,210  
 Class of County: 2A  
 No. of Common Pleas Court Judgeships: 23



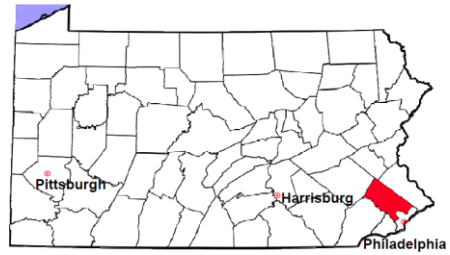
<b>2011 Relinquishments/Terminations</b>		<b>No. of Cases</b>
Cases Pending 1/1/2011		3
New Cases Filed in 2011		125
<b>Cases Available for Processing</b>		<b>128</b>
Processed By:		
Contested before a Judge	20	15.7%
Uncontested	106	83.5%
Other	1	0.8%
<b>Cases Processed</b>	<b>127</b>	<b>100.0%</b>
<b>Cases Pending 12/31/2011</b>		<b>1</b>

**Relinquishments/Terminations New Cases Filed, 2002-2011**



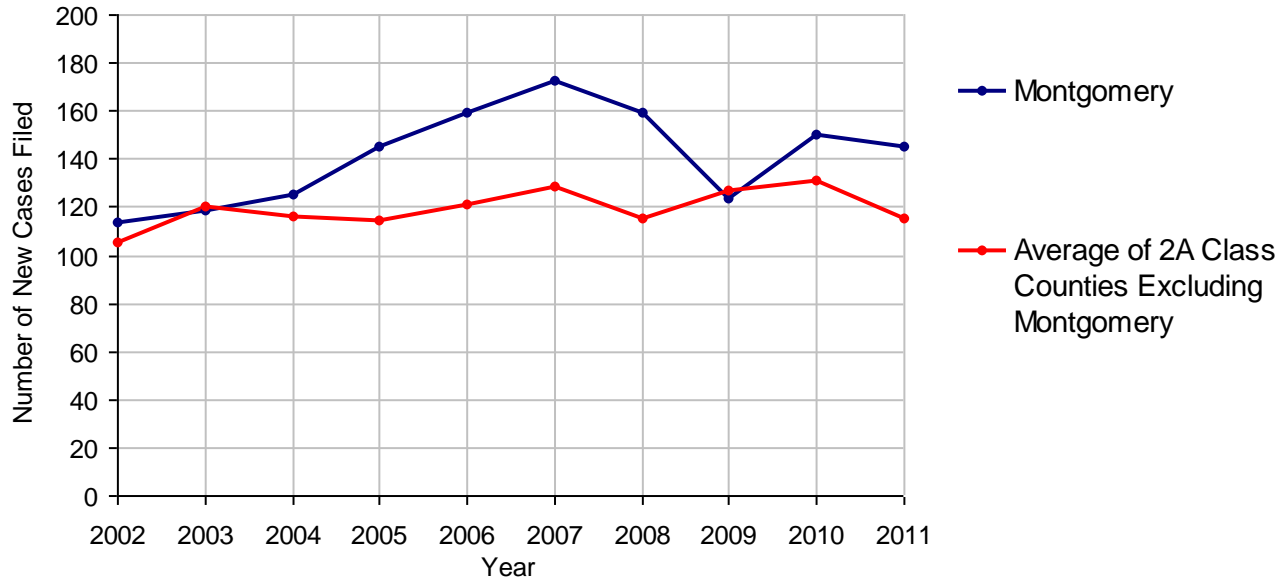
# Montgomery County

2011 Population Estimate: 804,210  
 Class of County: 2A  
 No. of Common Pleas Court Judgeships: 23



<b>2011 Appointment of Guardians</b>		<b>No. of Cases</b>
Cases Pending 1/1/2011		51
New Cases Filed in 2011		145
<b>Cases Available for Processing</b>		<b>196</b>
Processed By:		
Contested before a Judge	14	7.2%
Uncontested	155	79.5%
Other	26	13.3%
<b>Cases Processed</b>	<b>195</b>	<b>100.0%</b>
<b>Cases Pending 12/31/2011</b>		<b>1</b>

**Appointment of Guardians New Cases Filed, 2002-2011**

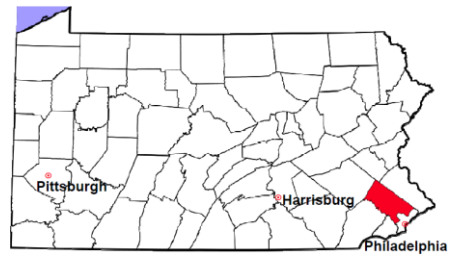


# Montgomery County

2011 Population Estimate: 804,210

Class of County: 2A

No. of Common Pleas Court Judgeships: 23



---

## 2011 Jury Activity and Performance Measures

---

A. Juror Days	9,883
B. Number Sent to Voir Dire	6,468
Voir Dire Attendance Rate (B/A * 100)	65.4%
C. Number of Jurors Selected	1,157
Juror Selection Rate (C/B * 100)	17.9%

---

Note: In mid-2011, AOPC began utilizing the National Center for State Courts' Jury Managers' Toolbox for collecting jury data. This has resulted in limited jury performance measures being reported for 2011. Additional data will be available in 2012.