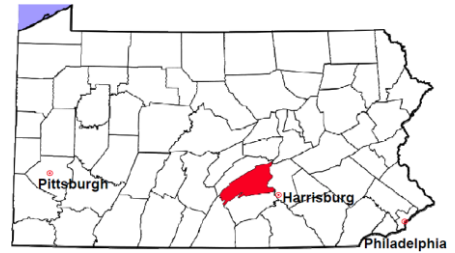


Perry County

2011 Population Estimate: 46,042
 Class of County: 6th
 No. of Common Pleas Court Judgeships: 2
 (Perry and Juniata combined)



2011 Criminal No. of Cases

Cases Pending 1/1/2011	170
New Cases Filed in 2011	548
Reopened Cases	19
Cases Available for Disposition	737

Disposed by:

Withdrawn/Dismissed	14	2.7%
ARD	69	13.1%
Guilty Plea	409	77.5%
Non-Jury Trial	6	1.1%
Jury Trial	18	3.4%
Inactive	9	1.7%
Other	3	0.6%
Total Cases Disposed	528	100.0%

Cases Pending 12/31/2011 **209**

Cases Awaiting Sentencing 24

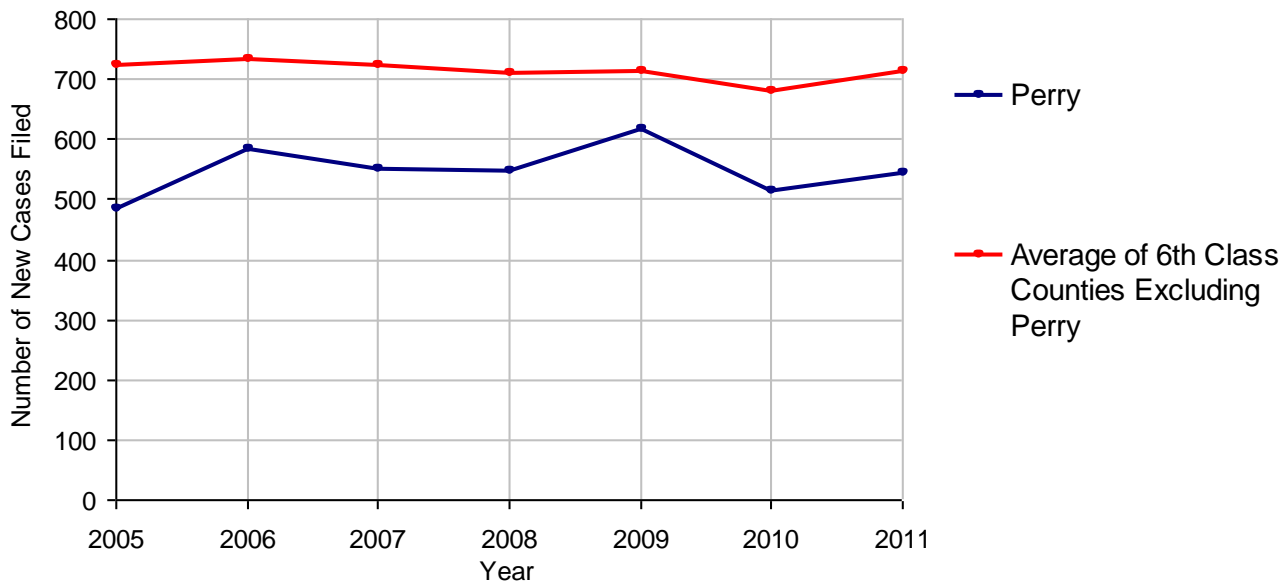
Data provided by CPCMS



Age of Pending Cases as of 12/31/2011

0-60 Days	86	41.1%
61-120 Days	65	31.1%
121-180 Days	31	14.8%
181-240 Days	6	2.9%
241-300 Days	8	3.8%
301-360 Days	3	1.4%
Over 360 Days	10	4.8%
Total	209	100.0%

Criminal New Cases Filed, 2005-2011

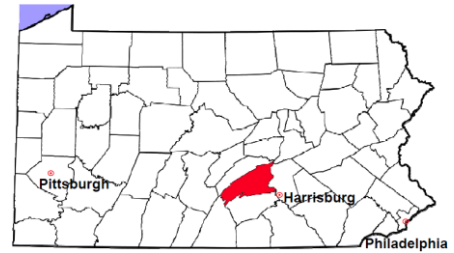


Perry County

2011 Population Estimate: 46,042

Class of County: 6th

No. of Common Pleas Court Judgeships: 2
(Perry and Juniata combined)



2011 Criminal - New Cases by Case Type



Case Type	Felony	Misdemeanor	Summary /Ungraded	Total
Person	46	82	0	128
Property	92	83	0	175
Drug	23	47	3	73
Weapon	4	1	0	5
Public Order	7	44	0	51
Motor Vehicle - DWI/DUI	0	112	0	112
Motor Vehicle - Other	0	3	0	3
Other	0	1	0	1
Total	172	373	3	548
	31.4%	68.1%	0.5%	100.0%

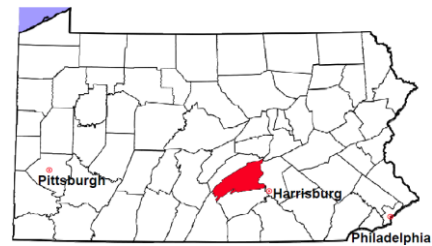
Data provided by CPCMS

Perry County

2011 Population Estimate: 46,042

Class of County: 6th

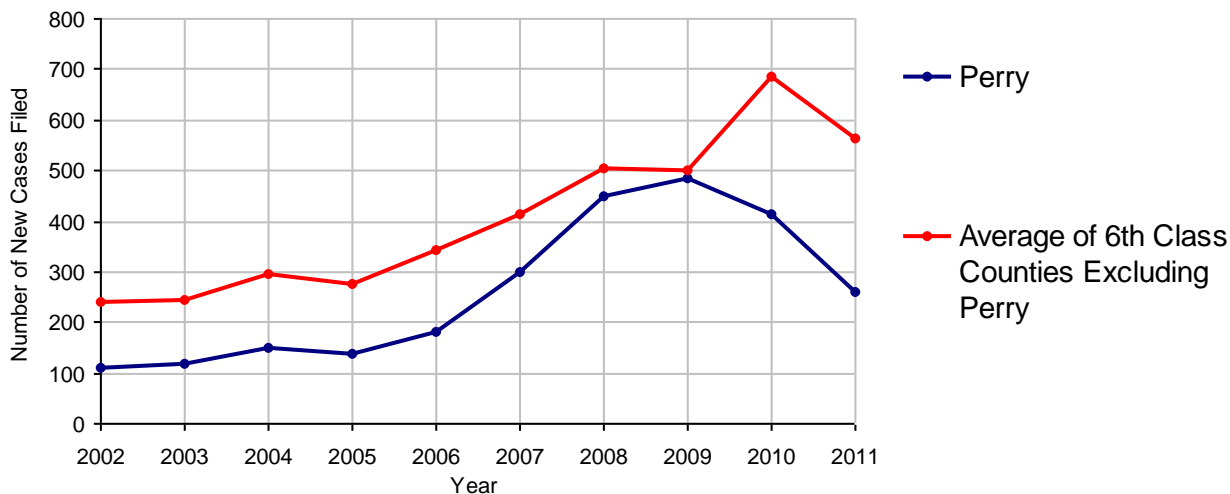
No. of Common Pleas Court Judgeships: 2
(Perry and Juniata combined)



2011 Civil	Civil Action	Other	Total
Cases Pending 1/1/2011	366	83	449
Docketed Cases	226	36	262
Arbitration Appeals	1	0	1
Transferred In	0	0	0
Returned to Active	0	0	0
Cases Available for Processing	593	119	712
Disposed By:			
Default Judgments	134	68	202
Cases Decided by Arbitration Board	1	0	1
Dispositive Motions	0	2	2
Settlements	69	28	97
Moved to Inactive Status	0	0	0
Transferred/Withdrawn	3	0	3
Pa.R.J.A. 1901 Administrative Purge	0	0	0
Other	49	2	51
Jury Trial	0	0	0
Non-Jury Trial	0	0	0
Total Cases Disposed	256	100	356
Cases Pending 12/31/2011	337	19	356

Age of Pending Cases as of 12/31/2011 (Civil Action Only)		
0-6 months	86	25.5%
7-12 months	32	9.5%
13-18 months	49	14.5%
19-24 months	25	7.4%
25-30 months	31	9.2%
31-36 months	31	9.2%
37-42 months	23	6.8%
43-48 months	14	4.2%
49-54 months	8	2.4%
55-60 months	5	1.5%
61-66 months	7	2.1%
67-72 months	7	2.1%
Over 72 months	19	5.6%
Total	337	100.0%

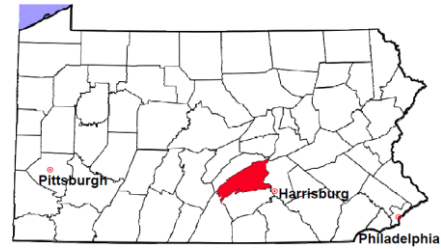
Docketed Cases, 2002-2011



Note: Prior to June 2010, docketed cases under the "Other" category were not reported. The reporting of these cases starting from June 2010 may contribute to an increase in docketed cases from 2009 to 2010.

Perry County

2011 Population Estimate: 46,042
 Class of County: 6th
 No. of Common Pleas Court Judgeships: 2
 (Perry and Juniata combined)



2011 Civil - Docketed Cases Listed by Case Type

TORT (does not include mass tort)

Intentional	0
Malicious Prosecution	1
Motor Vehicle	16
Nuisance	1
Premise Liability	7
Product Liability	1
Slander/Libel/Defamation	0
Other	7

MASS TORT

Asbestos	0
Tobacco	0
Toxic Tort - DES	0
Toxic Tort - Implant	0
Toxic Waste	0
Other	0

PROFESSIONAL LIABILITY

Dental	0
Legal	0
Medical Malpractice	0
Other	0

CONTRACT

(does not include judgments)

Buyer Plaintiff	2
Debt Collection:	
Credit Card	121
Other	66
Employment Dispute:	
Discrimination	0
Other	4

REAL PROPERTY

Ejectment*	10
Eminent Domain/ Condemnation*	0
Ground Rent	0
Landlord/Tenant Dispute	0
Mortgage Forclosures:	
Residential*	2
Commercial*	1
Partition of Real Property*	2
Quiet Title*	1
Other*	1

CIVIL APPEALS

Administrative Agencies

Board of Assessment*	0
Board of Elections*	0
Dept. of Transportation*	2
Zoning Board*	0
Statutory Appeal - Other*	1
Other*	2

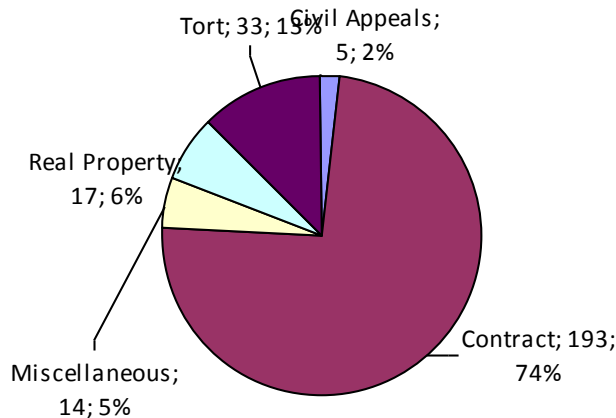
MISCELLANEOUS

Common Law/ Statutory Arbitration*	0
Declaratory Judgment*	1
Mandamus*	2
Non-Domestic Relations Restraining Order*	0
Quo Warranto*	0
Replevin*	6
Other*	5

TOTAL DOCKETED CASES:

262

* Civil Other



Of the Docketed Cases:

Pro Se Filings:	0
Class Action Suits:	0
MDJ Appeals:	0

Perry County

2011 Population Estimate: 46,042
 Class of County: 6th
 No. of Common Pleas Court Judgeships: 2
 (Perry and Juniata combined)



2011 Protection From Abuse

**No. of
Petitions**

Cases Pending 1/1/2011	30
New Cases Filed in 2011	91

*Of these, Petitions Requesting Temporary Orders: 91 (100.0%)
 Temporary Orders DENIED: 11 (12.1%), Temporary Orders GRANTED: 80 (87.9%)*

Cases Available for Processing 121

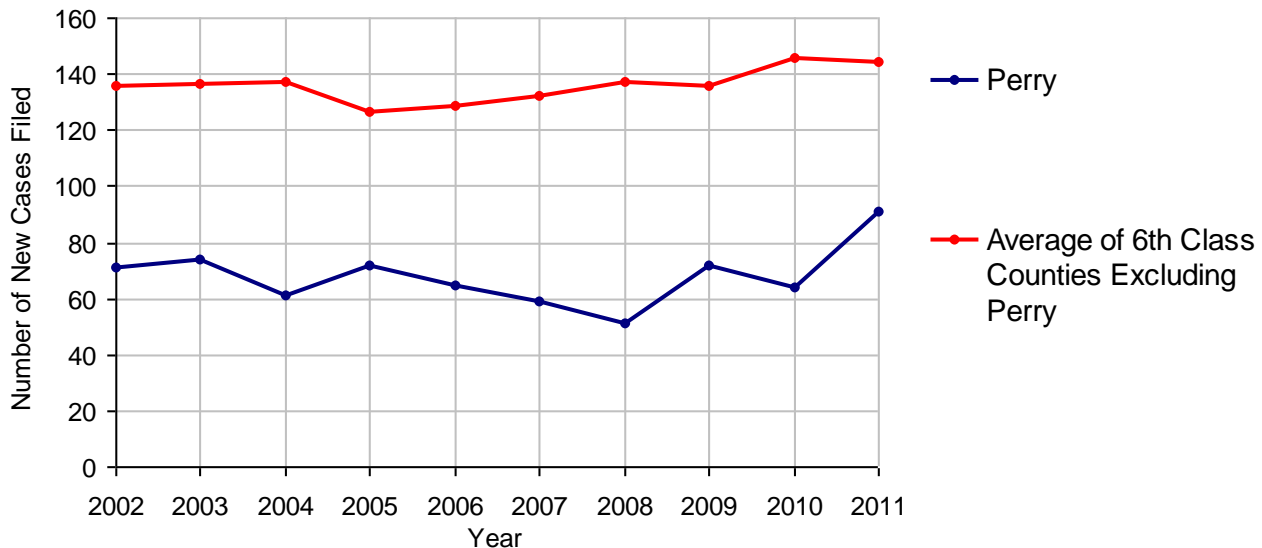
Processed By:

Temporary Order DENIED After Ex Parte Hearing and No Evidentiary Hearing Scheduled	2	2.4%
Temporary Order DISMISSED After Evidentiary Hearing and No Final Order Entered	4	4.8%
Final Order DENIED After Evidentiary Hearing Before a Judge	1	1.2%
Final Order GRANTED After Evidentiary Hearing Before a Judge	26	31.0%
Plaintiff Did Not Appear For Evidentiary Hearing	1	1.2%
Final Order by STIPULATION OR AGREEMENT Between the Parties	32	38.1%
Petition WITHDRAWN by Plaintiff	18	21.4%
TRANSFERRED to Another Jurisdiction	0	
DECEASED Party	0	
Other	0	

Cases Processed 84 100.0%

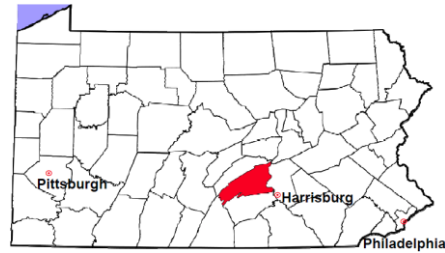
Cases Pending 12/31/2011 37

PFA New Cases Filed, 2002-2011

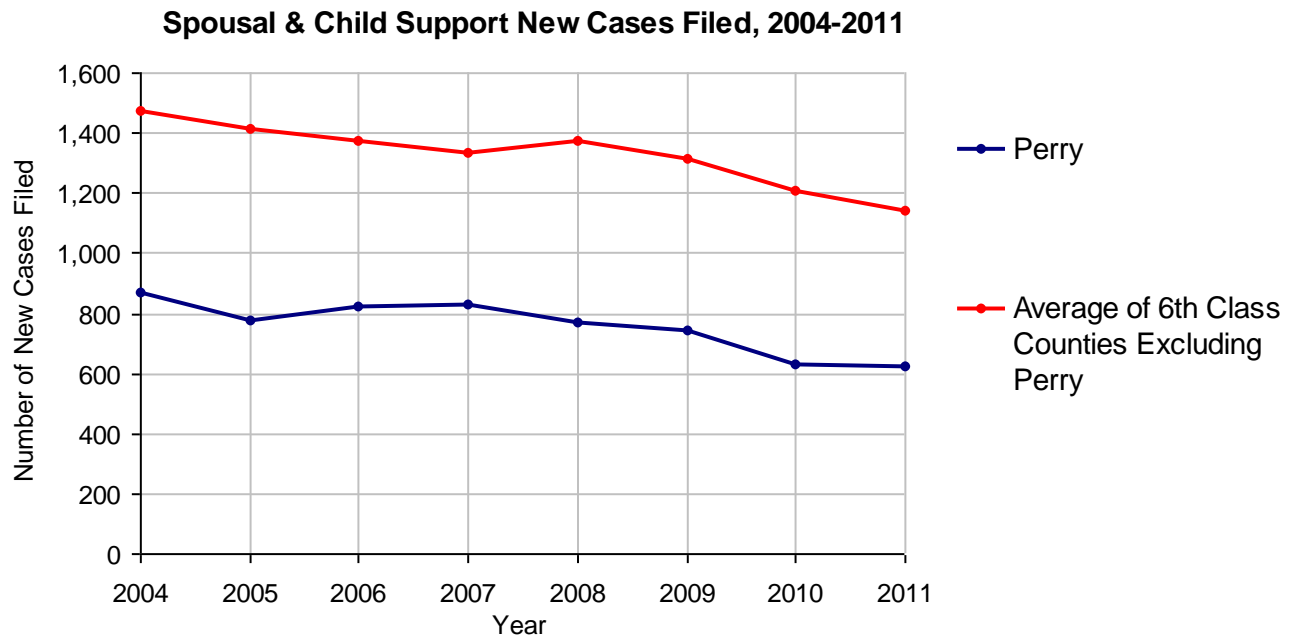


Perry County

2011 Population Estimate: 46,042
 Class of County: 6th
 No. of Common Pleas Court Judgeships: 2
 (Perry and Juniata combined)



2011 Spousal & Child Support	No. of Petitions	
Cases Pending 1/1/2011	136	
New Cases Filed in 2011	624	
Dockets Transferred In (+)	9	
Dockets Transferred Out (-)	19	
Cases Available for Processing	750	
Processed By:		
Judge	38	7.1%
Intake Officer	501	92.9%
Hearing Officer	0	
Other	0	
Cases Processed	539	100.0%
Cases Pending 12/31/2011	211	

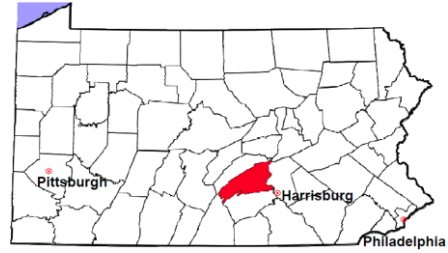


Perry County

2011 Population Estimate: 46,042

Class of County: 6th

No. of Common Pleas Court Judgeships: 2
(Perry and Juniata combined)



2011 Custody/Partial Custody/Visitation

No. of
Petitions

Cases Pending 1/1/2011

400

New Cases Filed in 2011

202

Cases Available for Processing

602

Processed By:

Judge

151

97.4%

Non-Judicial Officer

1

0.6%

Other

3

1.9%

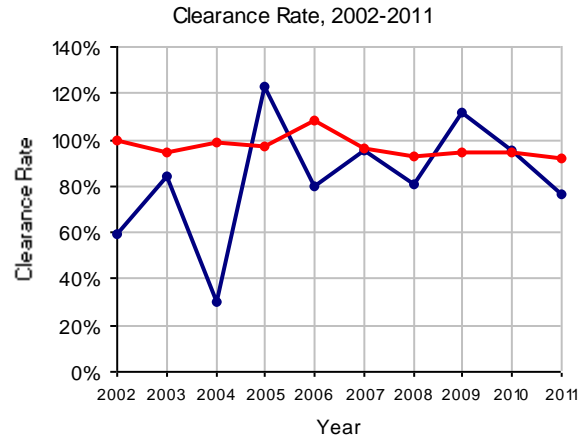
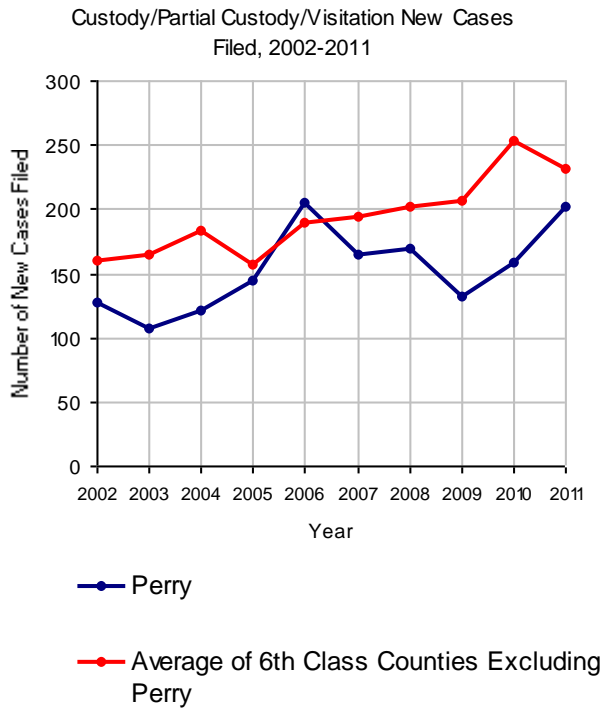
Cases Processed

155

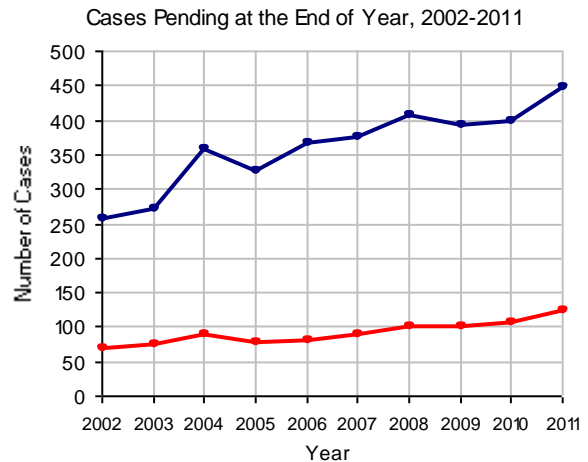
100.0%

Cases Pending 12/31/2011

447

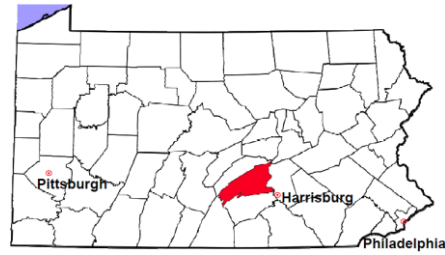


Note: Clearance Rate = Cases Processed / New Cases Filed



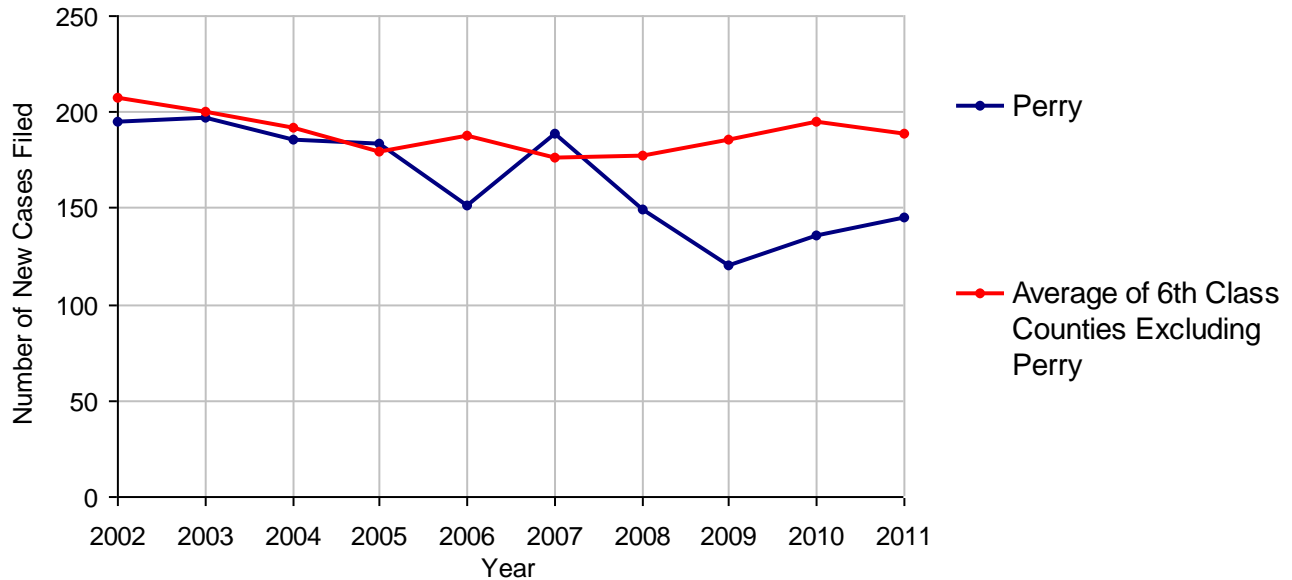
Perry County

2011 Population Estimate: 46,042
 Class of County: 6th
 No. of Common Pleas Court Judgeships: 2
 (Perry and Juniata combined)



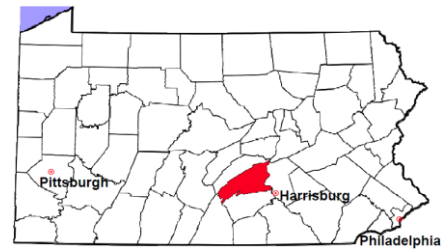
2011 Divorce	No. of Petitions	
Cases Pending 1/1/2011	256	
New Cases Filed in 2011	145	
Cases Available for Processing	401	
Processed By:		
Contested Before a Judge	0	
Contested Before a Master	4	2.9%
Uncontested	133	95.0%
Other	3	2.1%
Cases Processed	140	100.0%
Cases Pending 12/31/2011	261	

Divorce New Cases Filed, 2002-2011



Perry County

2011 Population Estimate: 46,042
 Class of County: 6th
 No. of Common Pleas Court Judgeships: 2
 (Perry and Juniata combined)



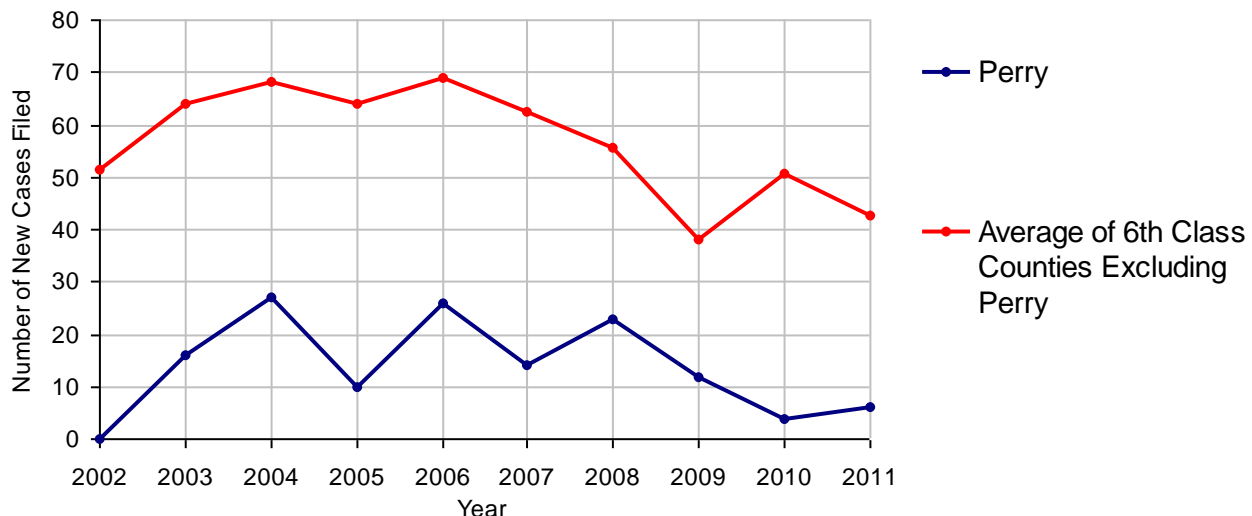
2011 Juvenile Dependency - Active Dependent Inventory



	Abuse/ Neglect	Status Offenses	Total
Cases Pending 1/1/2011	2	0	2
New Petitions Filed in 2011	6	0	6
Other	0	0	0
Total Petitions Available for Processing	8	0	8
Processed by:			
Adjudicated Dependent			
Judge	6	0	6
Master	0	0	0
Adjudicated NOT Dependent			
Judge	0	0	0
Master	0	0	0
Withdrawn/Dismissed/Inactive	0	0	0
Other	2	0	2
Total Petitions Processed	8	0	8
Cases Pending 12/31/2011	0	0	0

Data provided by CPCMS

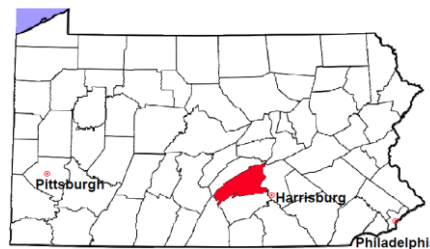
Abuse/Neglect and Status Offenses New Cases Filed, 2002-2011



Note: Dependency data for 2002-2010 were collected manually. Dependency data for 2011 were provided by CPCMS.

Perry County

2011 Population Estimate: 46,042
 Class of County: 6th
 No. of Common Pleas Court Judgeships: 2
 (Perry and Juniata combined)



2011 Juvenile Dependency - Adjudicated Dependent Inventory



	Abuse/ Neglect	Status Offenses	Total	
Cases Pending 1/1/2011	25	1	26	
New Adjudicated Dependent Cases	6	0	6	
Other	4	0	4	
Total Adjudicated Dependent Cases	35	1	36	
<u>Court Supervision Terminated:</u>				
Family Reunification	1	0	1	5.3%
Adoption	5	0	5	26.3%
Placement with a Relative/Guardian	4	0	4	21.1%
Aged Out	6	1	7	36.8%
Other Permanency Outcomes*	0	0	0	
Other**	2	0	2	10.5%
Total Adjudicated Dependent Cases Terminated	18	1	19	100.0%
Cases Pending 12/31/2011	17	0	17	

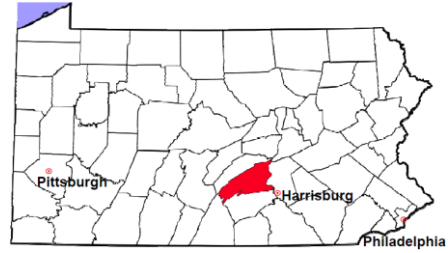
Data provided by CPCMS

* Other Permanency Outcomes include: adjudicated delinquent, death due to natural causes, emancipation, permanent living arrangement, and parent has come forward.

** Other includes cases where Court Supervision is terminated due to transfer out of jurisdiction, withdrawal and administrative closures.

Perry County

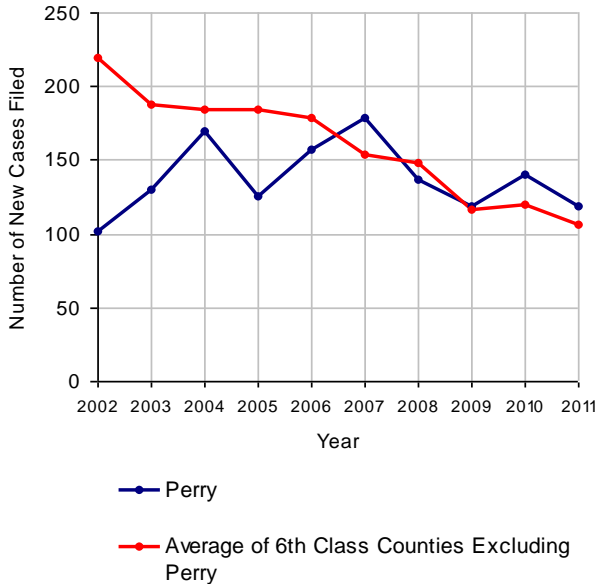
2011 Population Estimate: 46,042
 Class of County: 6th
 No. of Common Pleas Court Judgeships: 2
 (Perry and Juniata combined)



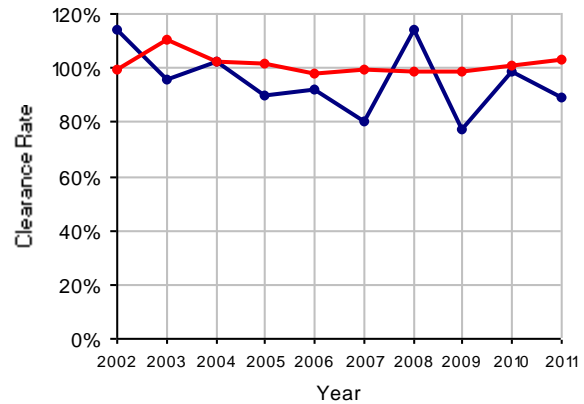
2011 Juvenile Delinquency

	No. of Cases
Cases Pending 1/1/2011	68
New Cases Filed in 2011	119
Cases Available for Processing	187
Processed By:	
Judge	56 52.8%
Non-Judicial Officer	27 25.5%
Other	23 21.7%
Cases Processed	106 100.0%
Cases Pending 12/31/2011	81

Juvenile Delinquency New Cases Filed, 2002-2011

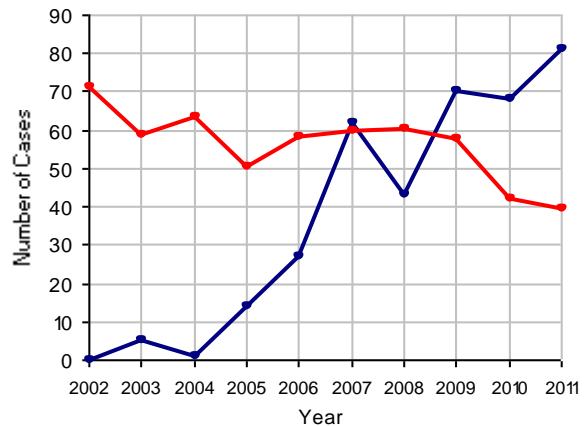


Clearance Rate, 2002-2011



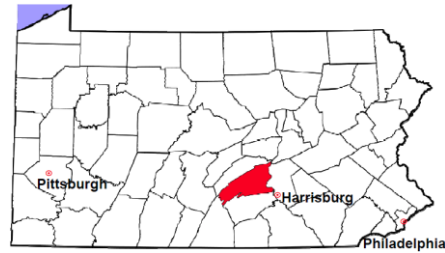
Note: Clearance Rate = Cases Processed / New Cases Filed

Cases Pending at the End of Year, 2002-2011



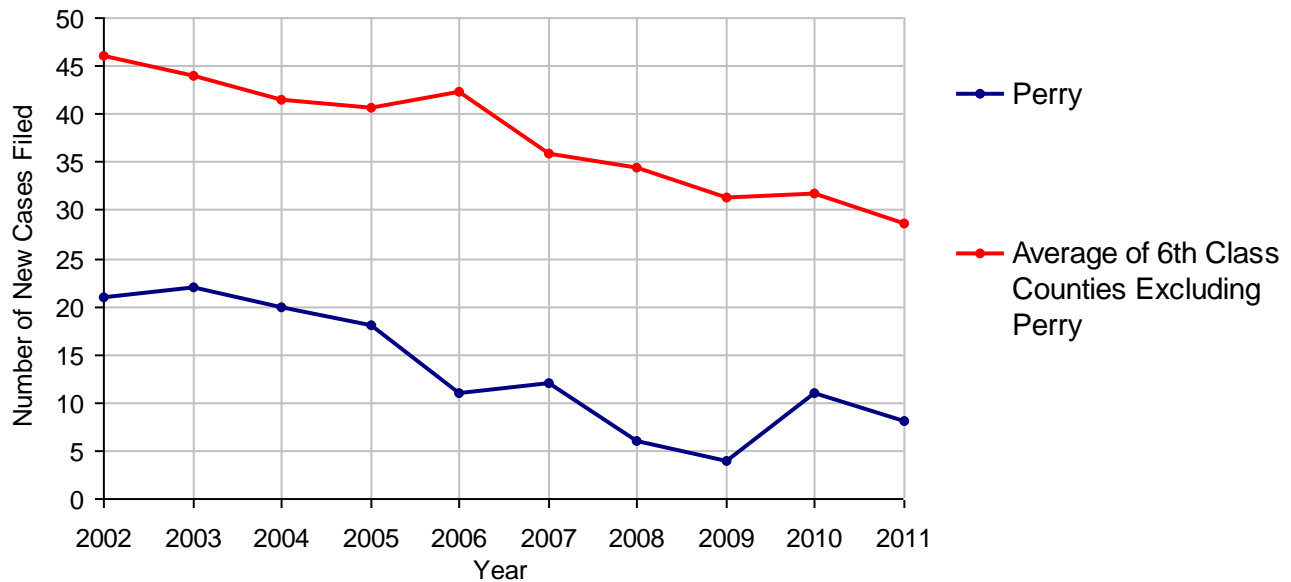
Perry County

2011 Population Estimate: 46,042
 Class of County: 6th
 No. of Common Pleas Court Judgeships: 2
 (Perry and Juniata combined)



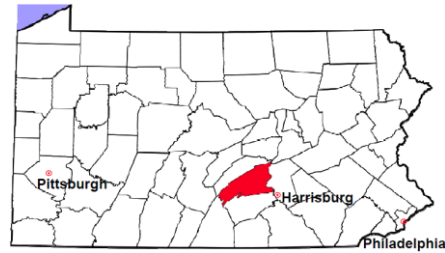
2011 Accounts	No. of Cases
Cases Pending 1/1/2011	1
New Cases Filed in 2011	8
Cases Available for Processing	9
Processed By:	
Contested before a Judge	0
Contested before a Non-judicial Officer	0
Uncontested	8 100.0%
Other	0
Cases Processed	8 100.0%
Cases Pending 12/31/2011	1

Accounts New Cases Filed, 2002-2011



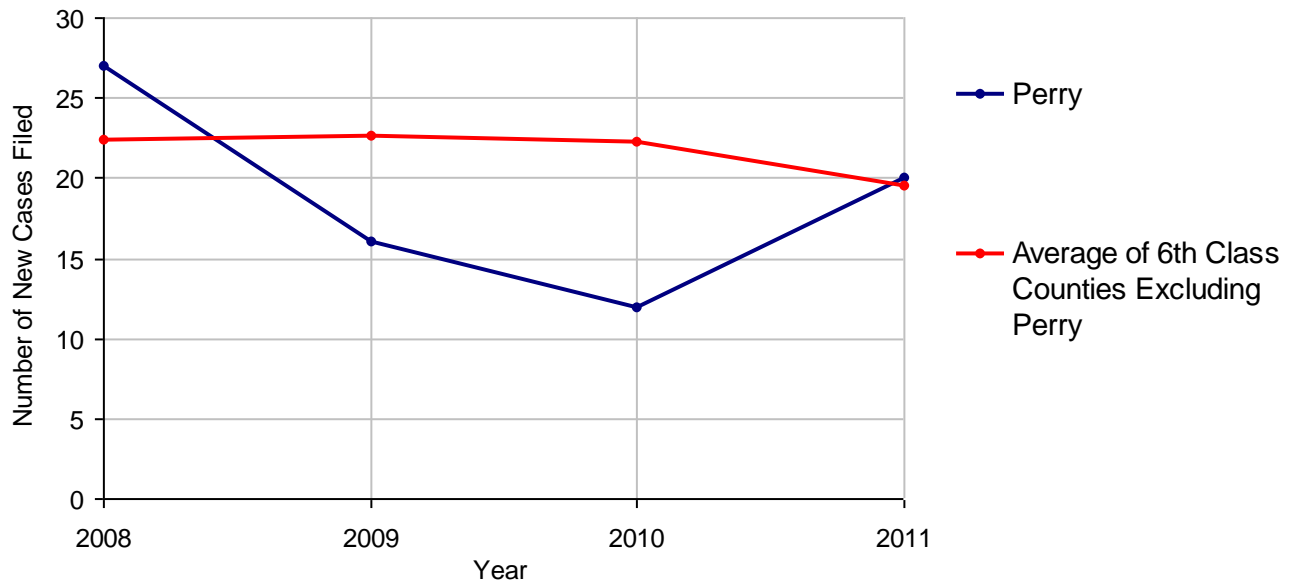
Perry County

2011 Population Estimate: 46,042
 Class of County: 6th
 No. of Common Pleas Court Judgeships: 2
 (Perry and Juniata combined)



2011 Adoptions		No. of Cases	
Cases Pending 1/1/2011		1	
New Cases Filed in 2011		20	
Cases Available for Processing		21	
Processed By:			
Contested before a Judge	Granted	0	
	Denied	0	
Uncontested	Granted	21	100.0%
	Denied	0	
Other		0	
Cases Processed		21	100.0%
Cases Pending 12/31/2011		0	

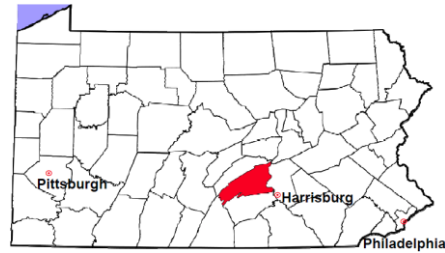
Adoptions New Cases Filed, 2008-2011



Note: Prior to 2008, each petition was counted as one new case, regardless of the number of children listed on the petition. Starting in 2008, each child listed on a petition is counted as a separate case. Therefore, statistics for the years since 2008 should not be compared to those for the years prior to 2008.

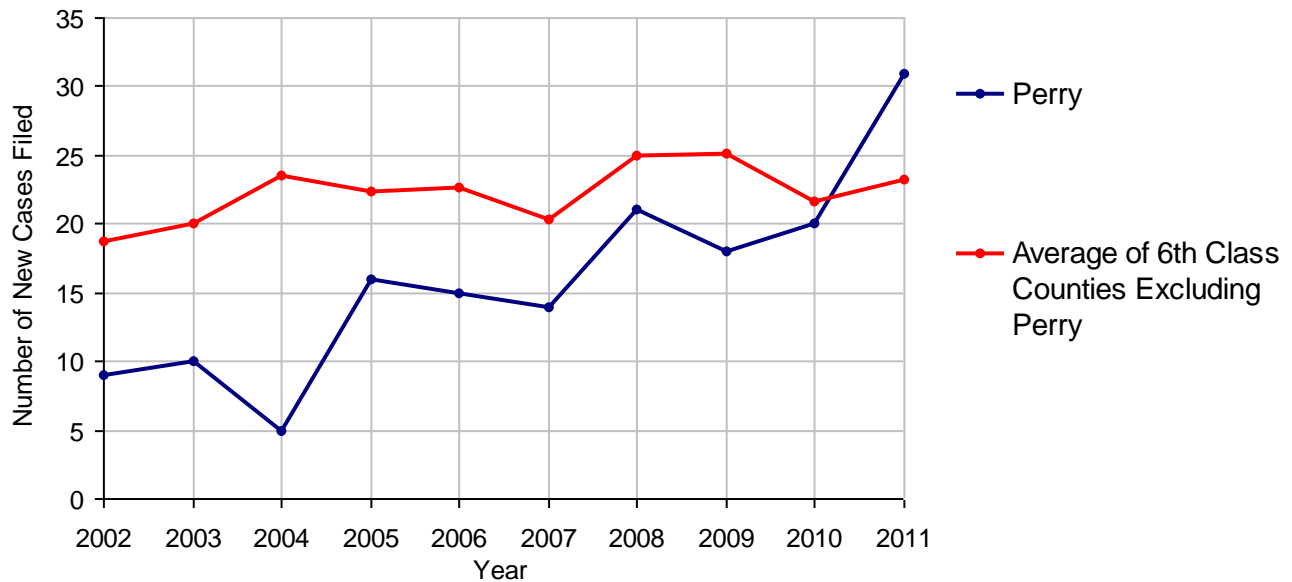
Perry County

2011 Population Estimate: 46,042
 Class of County: 6th
 No. of Common Pleas Court Judgeships: 2
 (Perry and Juniata combined)



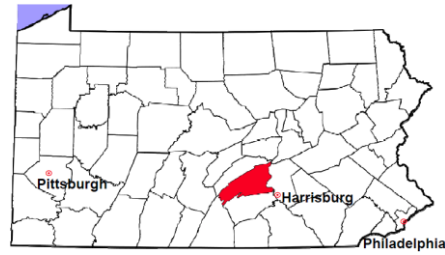
2011 Relinquishments/Terminations	No. of Cases
Cases Pending 1/1/2011	11
New Cases Filed in 2011	31
Cases Available for Processing	42
Processed By:	
Contested before a Judge	6 18.2%
Uncontested	25 75.8%
Other	2 6.1%
Cases Processed	33 100.0%
Cases Pending 12/31/2011	9

Relinquishments/Terminations New Cases Filed, 2002-2011



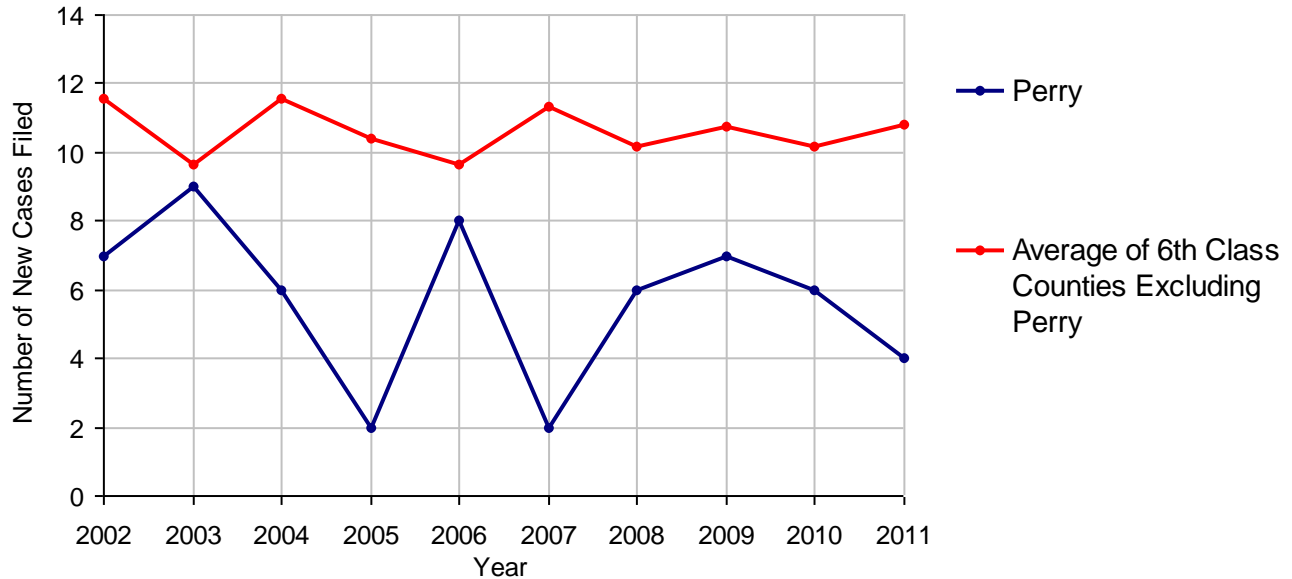
Perry County

2011 Population Estimate: 46,042
 Class of County: 6th
 No. of Common Pleas Court Judgeships: 2
 (Perry and Juniata combined)



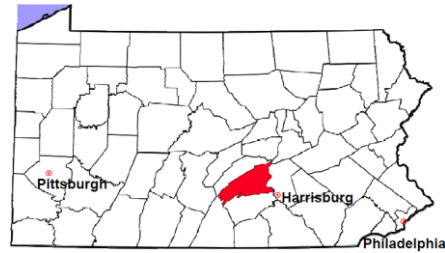
2011 Appointment of Guardians		No. of Cases
Cases Pending 1/1/2011		0
New Cases Filed in 2011		4
Cases Available for Processing		4
Processed By:		
Contested before a Judge		0
Uncontested	1	33.3%
Other	2	66.7%
Cases Processed	3	100.0%
Cases Pending 12/31/2011		1

Appointment of Guardians New Cases Filed, 2002-2011



Perry County

2011 Population Estimate: 46,042
Class of County: 6th
No. of Common Pleas Court Judgeships: 2
(Perry and Juniata combined)



2011 Jury Activity and Performance Measures

A. Juror Days	1,219
B. Number Sent to Voir Dire	1,135
Voir Dire Attendance Rate (B/A * 100)	93.1%
C. Number of Jurors Selected	521
Juror Selection Rate (C/B * 100)	45.9%

Note: In mid-2011, AOPC began utilizing the National Center for State Courts' Jury Managers' Toolbox for collecting jury data. This has resulted in limited jury performance measures being reported for 2011. Additional data will be available in 2012.