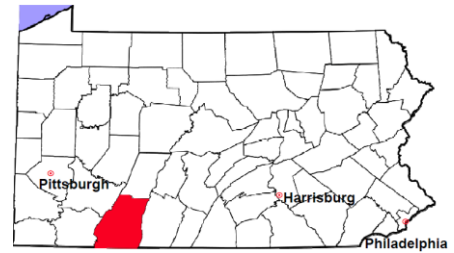


Somerset County

2011 Population Estimate: 77,405

Class of County: 6th

No. of Common Pleas Court Judgeships: 3



2011 Criminal	No. of Cases
---------------	--------------

Cases Pending 1/1/2011	537
New Cases Filed in 2011	794
Reopened Cases	39
Cases Available for Disposition	1,370

Disposed by:

Withdrawn/Dismissed	93	11.3%
ARD	103	12.5%
Guilty Plea	507	61.8%
Non-Jury Trial	2	0.2%
Jury Trial	5	0.6%
Inactive	33	4.0%
Other	78	9.5%
Total Cases Disposed	821	100.0%

Cases Pending 12/31/2011 **549**

Cases Awaiting Sentencing 117

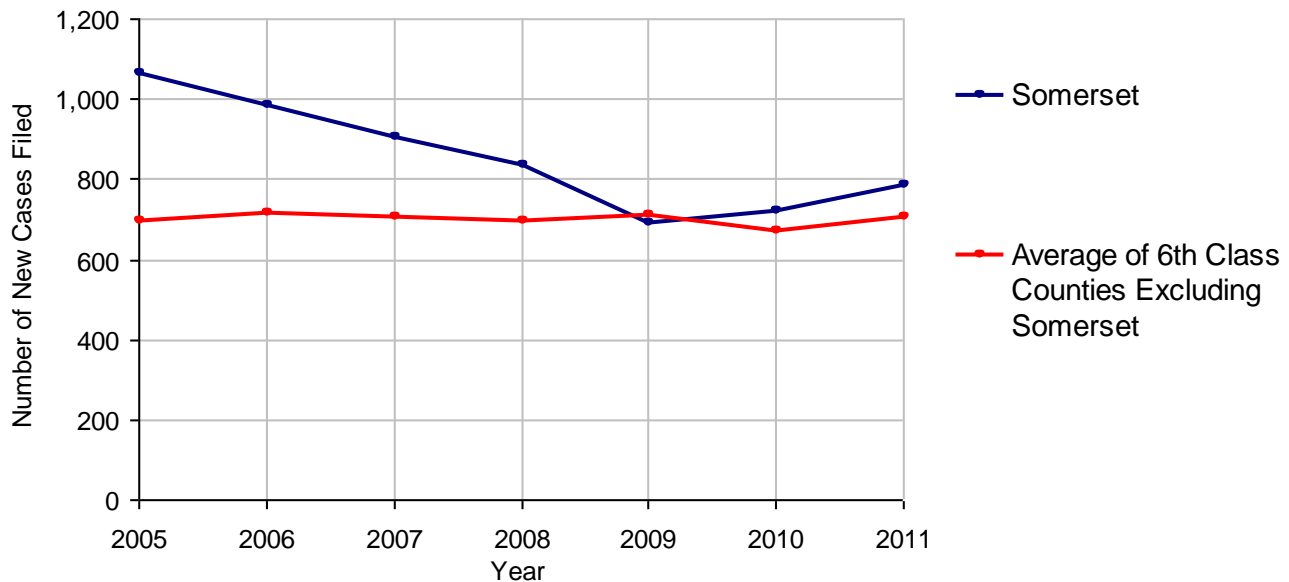
Data provided by CPCMS



Age of Pending Cases as of 12/31/2011

0-60 Days	129	23.5%
61-120 Days	124	22.6%
121-180 Days	68	12.4%
181-240 Days	38	6.9%
241-300 Days	36	6.6%
301-360 Days	13	2.4%
Over 360 Days	141	25.7%
Total	549	100.0%

Criminal New Cases Filed, 2005-2011

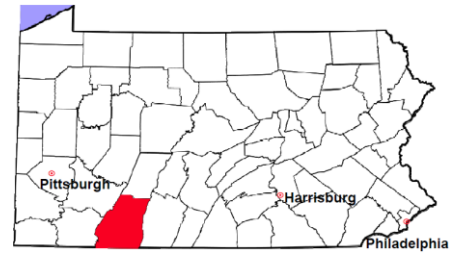


Somerset County

2011 Population Estimate: 77,405

Class of County: 6th

No. of Common Pleas Court Judgeships: 3



2011 Criminal - New Cases by Case Type

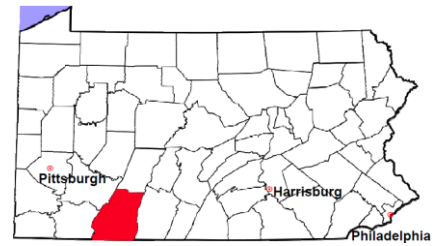


Case Type	Felony	Misdemeanor	Summary /Ungraded	Total
Person	60	61	0	121
Property	157	126	2	285
Drug	40	46	0	86
Weapon	2	0	0	2
Public Order	31	66	0	97
Motor Vehicle - DWI/DUI	0	198	1	199
Motor Vehicle - Other	0	3	0	3
Other	1	0	0	1
Total	291	500	3	794
	36.6%	63.0%	0.4%	100.0%

Data provided by CPCMS

Somerset County

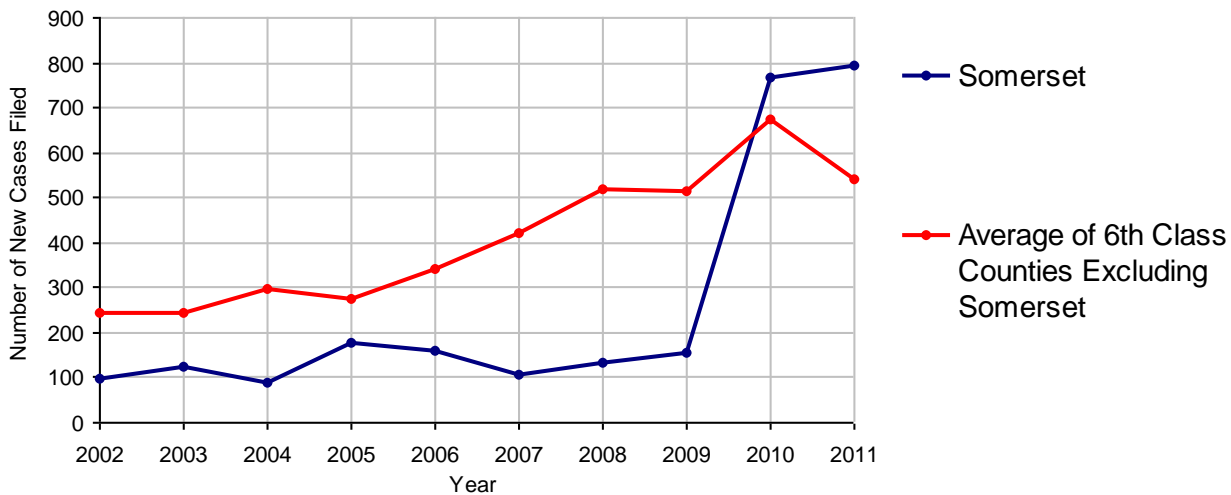
2011 Population Estimate: 77,405
 Class of County: 6th
 No. of Common Pleas Court Judgeships: 3



2011 Civil	Civil Action	Other	Total
Cases Pending 1/1/2011	701	1,186	1,887
Docketed Cases	526	268	794
Arbitration Appeals	1	4	5
Transferred In	0	1	1
Returned to Active	2	3	5
Cases Available for Processing	1,230	1,462	2,692
Disposed By:			
Default Judgments	189	95	284
Cases Decided by Arbitration Board	5	11	16
Dispositive Motions	33	25	58
Settlements	262	149	411
Moved to Inactive Status	6	0	6
Transferred/Withdrawn	15	25	40
Pa.R.J.A. 1901 Administrative Purge	79	354	433
Other	7	20	27
Jury Trial	2	0	2
Non-Jury Trial	0	0	0
Total Cases Disposed	598	679	1,277
Cases Pending 12/31/2011	632	783	1,415

Age of Pending Cases as of 12/31/2011 (Civil Action Only)		
0-6 months	223	35.3%
7-12 months	109	17.2%
13-18 months	107	16.9%
19-24 months	20	3.2%
25-30 months	24	3.8%
31-36 months	25	4.0%
37-42 months	13	2.1%
43-48 months	11	1.7%
49-54 months	12	1.9%
55-60 months	7	1.1%
61-66 months	6	0.9%
67-72 months	15	2.4%
Over 72 months	60	9.5%
Total	632	100.0%

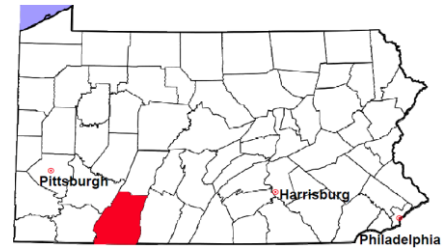
Docketed Cases, 2002-2011



Note: Prior to June 2010, docketed cases under the "Other" category were not reported. The reporting of these cases starting from June 2010 may contribute to an increase in docketed cases from 2009 to 2010.

Somerset County

2011 Population Estimate: 77,405
 Class of County: 6th
 No. of Common Pleas Court Judgeships: 3



2011 Civil - Docketed Cases Listed by Case Type

TORT (does not include mass tort)

Intentional	5
Malicious Prosecution	0
Motor Vehicle	31
Nuisance	0
Premise Liability	12
Product Liability	2
Slander/Libel/Defamation	0
Other	25

MASS TORT

Asbestos	0
Tobacco	0
Toxic Tort - DES	0
Toxic Tort - Implant	0
Toxic Waste	0
Other	0

PROFESSIONAL LIABILITY

Dental	0
Legal	0
Medical Malpractice	4
Other	1

CONTRACT

(does not include judgments)

Buyer Plaintiff	8
Debt Collection:	
Credit Card	285
Debt Collection: Other	100
Employment Dispute:	
Discrimination	1
Employment Dispute: Other	3
Other	34

REAL PROPERTY

Ejectment*	11
Eminent Domain/ Condemnation*	17
Ground Rent	0
Landlord/Tenant Dispute	15
Mortgage Forclosures:	
Residential*	93
Commercial*	5
Partition of Real Property*	3
Quiet Title*	4
Other*	20

CIVIL APPEALS

Administrative Agencies

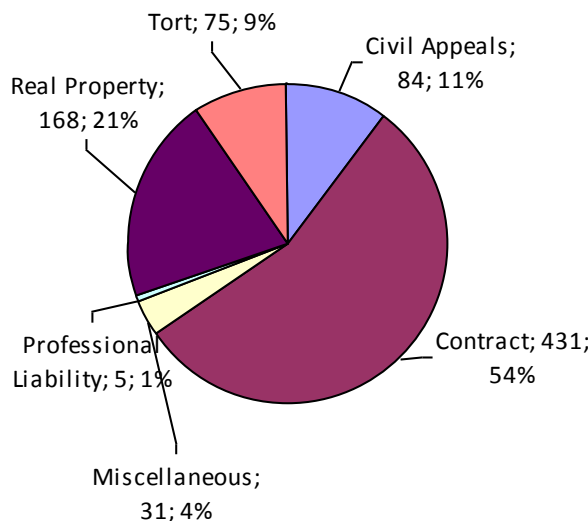
Board of Assessment*	3
Board of Elections*	0
Dept. of Transportation*	37
Zoning Board*	2
Statutory Appeal - Other*	1
Other*	41

MISCELLANEOUS

Common Law/ Statutory Arbitration*	1
Declaratory Judgment*	6
Mandamus*	1
Non-Domestic Relations Restraining Order*	1
Quo Warranto*	0
Replevin*	2
Other*	20

TOTAL DOCKETED CASES: 794

* Civil Other



Of the Docketed Cases:

Pro Se Filings:	18	2.3%
Class Action Suits:	0	
MDJ Appeals:	70	8.8%

Somerset County

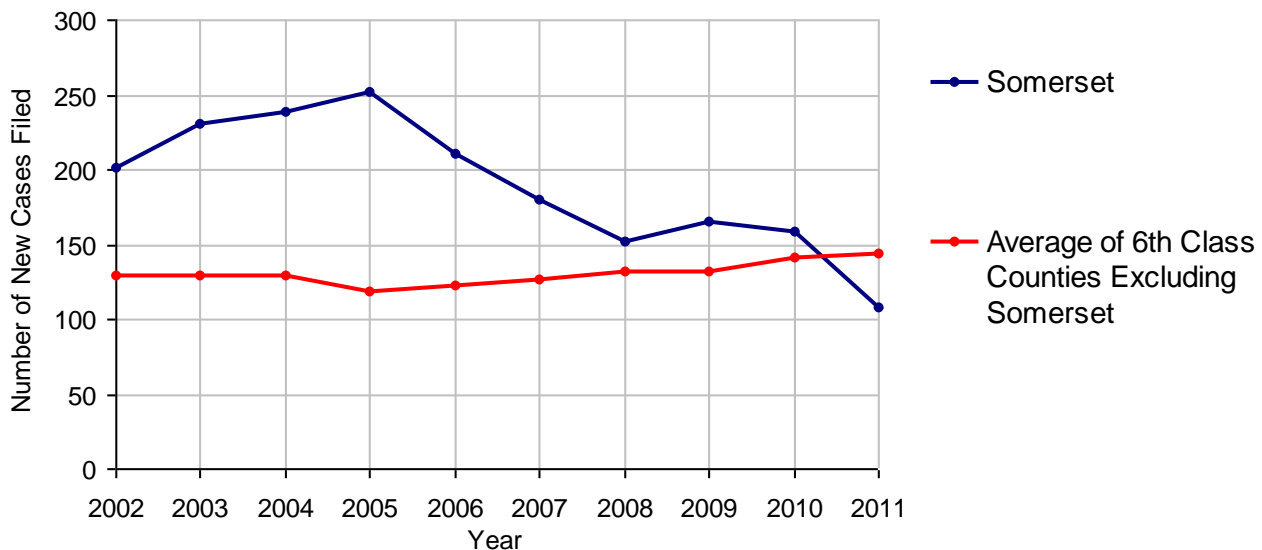
2011 Population Estimate: 77,405
 Class of County: 6th
 No. of Common Pleas Court Judgeships: 3



2011 Protection From Abuse

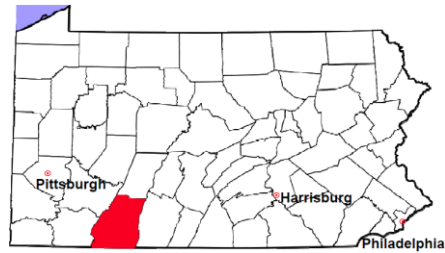
	No. of Petitions
Cases Pending 1/1/2011	23
New Cases Filed in 2011	108
<i>Of these, Petitions Requesting Temporary Orders: 108 (100.0%)</i>	
<i>Temporary Orders DENIED: 9 (8.3%), Temporary Orders GRANTED: 99 (91.7%)</i>	
Cases Available for Processing	131
Processed By:	
Temporary Order DENIED After Ex Parte Hearing and No Evidentiary Hearing Scheduled	0
Temporary Order DISMISSED After Evidentiary Hearing and No Final Order Entered	12 10.3%
Final Order DENIED After Evidentiary Hearing Before a Judge	1 0.9%
Final Order GRANTED After Evidentiary Hearing Before a Judge	14 12.0%
Plaintiff Did Not Appear For Evidentiary Hearing	14 12.0%
Final Order by STIPULATION OR AGREEMENT Between the Parties	29 24.8%
Petition WITHDRAWN by Plaintiff	39 33.3%
TRANSFERRED to Another Jurisdiction	0
DECEASED Party	0
Other	8 6.8%
Cases Processed	117 100.0%
Cases Pending 12/31/2011	14

PFA New Cases Filed, 2002-2011

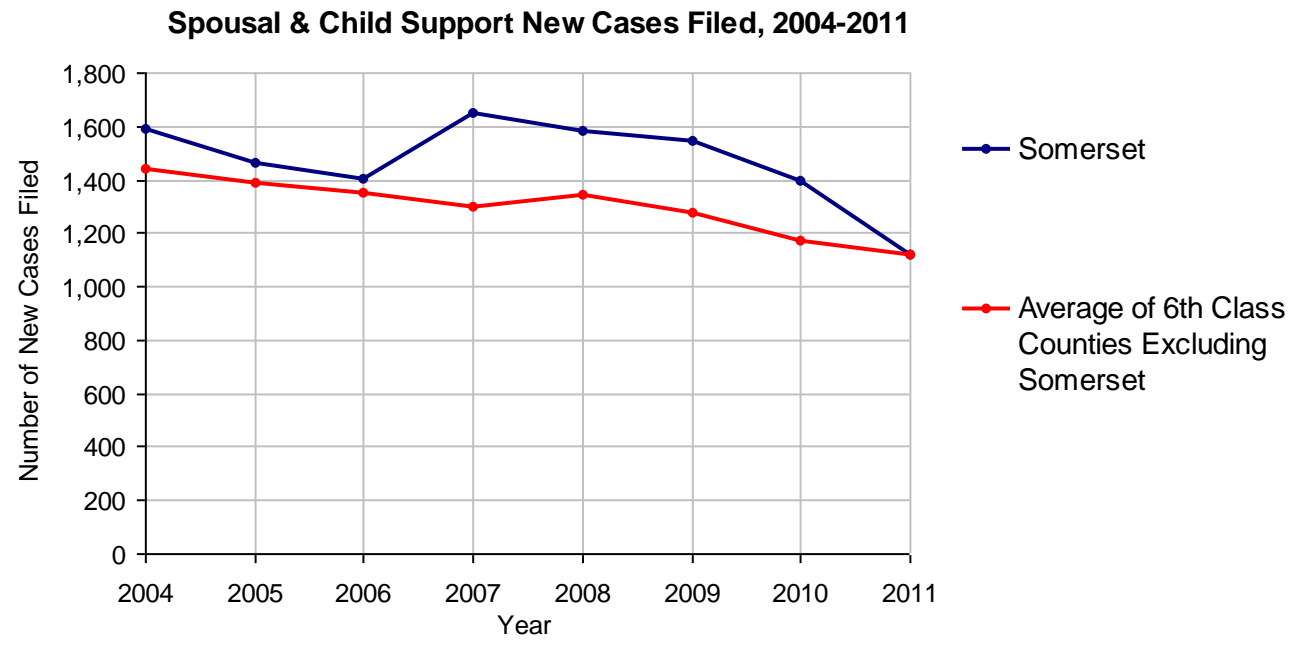


Somerset County

2011 Population Estimate: 77,405
 Class of County: 6th
 No. of Common Pleas Court Judgeships: 3



2011 Spousal & Child Support	No. of Petitions	
Cases Pending 1/1/2011	252	
New Cases Filed in 2011	1,118	
Dockets Transferred In (+)	16	
Dockets Transferred Out (-)	17	
Cases Available for Processing	1,369	
Processed By:		
Judge	30	2.7%
Intake Officer	1,026	90.6%
Hearing Officer	76	6.7%
Other	0	
Cases Processed	1,132	100.0%
Cases Pending 12/31/2011	237	

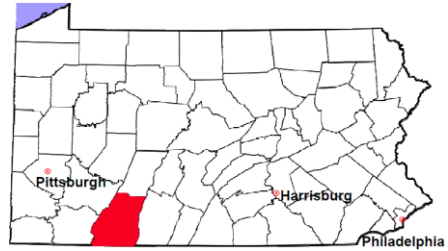


Somerset County

2011 Population Estimate: 77,405

Class of County: 6th

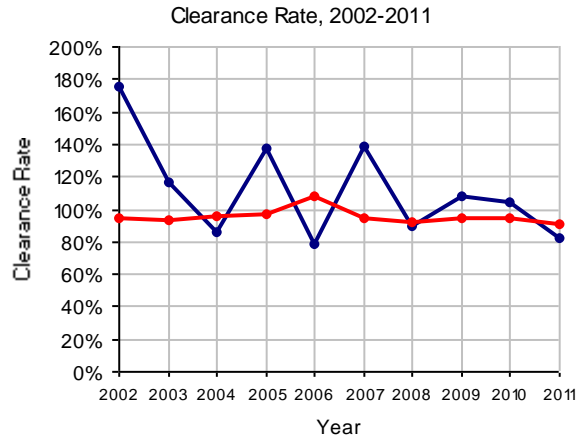
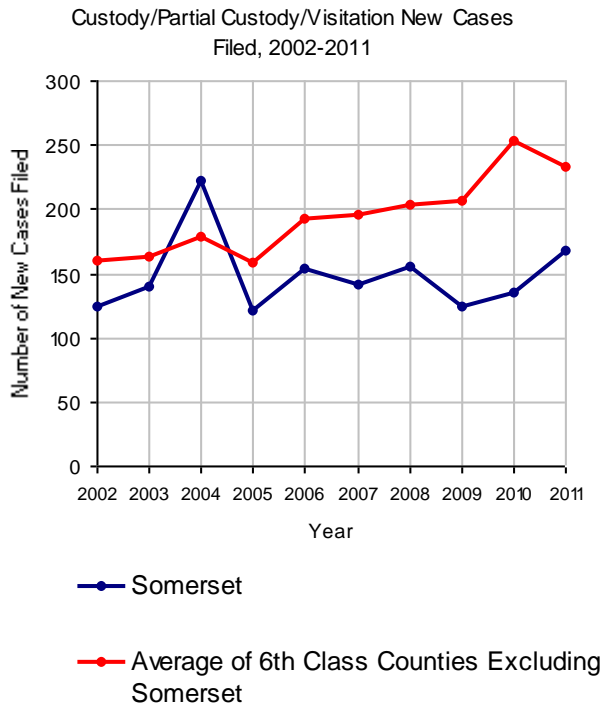
No. of Common Pleas Court Judgeships: 3



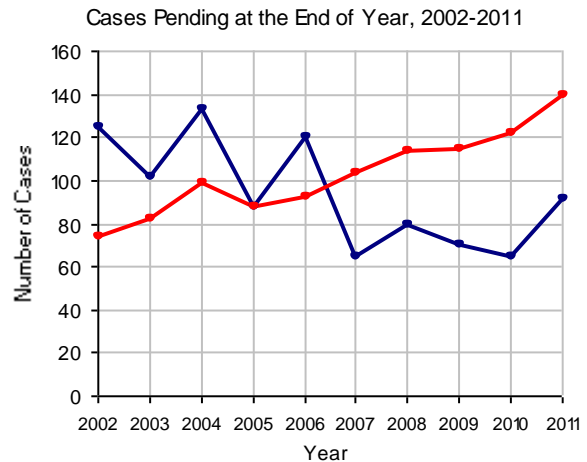
2011 Custody/Partial Custody/Visitation

No. of
Petitions

Cases Pending 1/1/2011	62
New Cases Filed in 2011	168
Cases Available for Processing	230
Processed By:	
Judge	23 16.7%
Non-Judicial Officer	61 44.2%
Other	54 39.1%
Cases Processed	138 100.0%
Cases Pending 12/31/2011	92

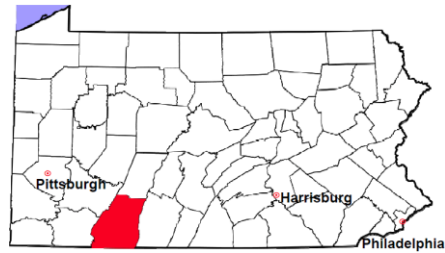


Note: Clearance Rate = Cases Processed / New Cases Filed



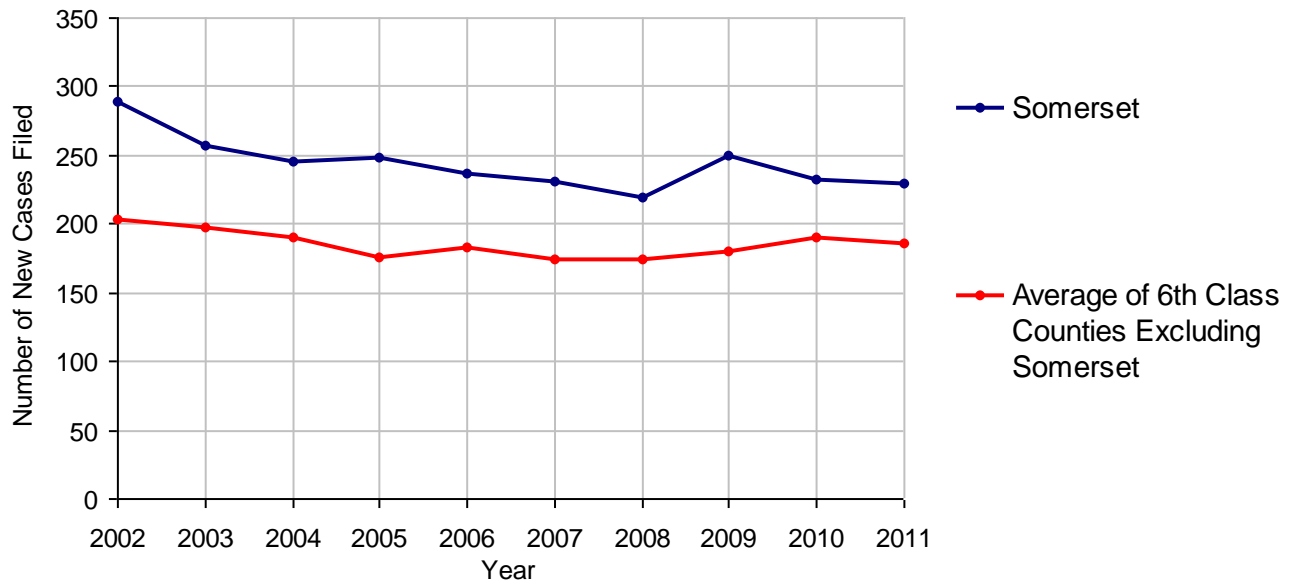
Somerset County

2011 Population Estimate: 77,405
 Class of County: 6th
 No. of Common Pleas Court Judgeships: 3



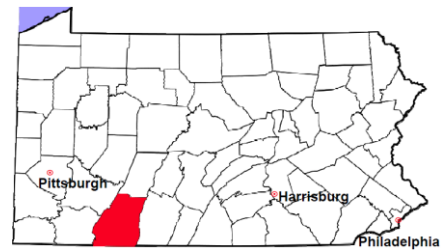
2011 Divorce	No. of Petitions	
Cases Pending 1/1/2011	663	
New Cases Filed in 2011	229	
Cases Available for Processing	892	
Processed By:		
Contested Before a Judge	0	
Contested Before a Master	0	
Uncontested	224	99.6%
Other	1	0.4%
Cases Processed	225	100.0%
Cases Pending 12/31/2011	667	

Divorce New Cases Filed, 2002-2011



Somerset County

2011 Population Estimate: 77,405
 Class of County: 6th
 No. of Common Pleas Court Judgeships: 3



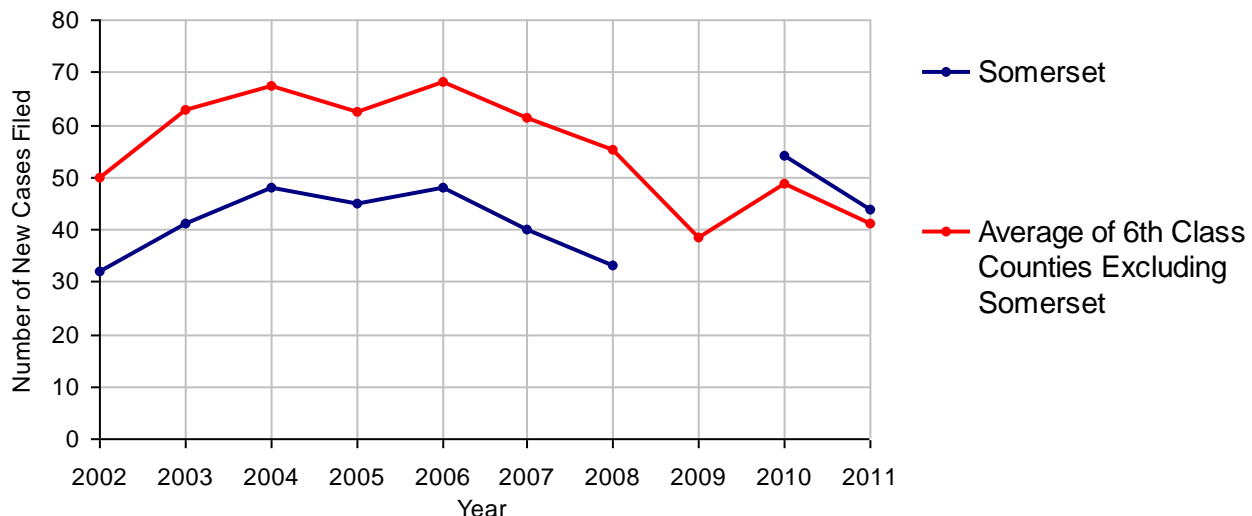
2011 Juvenile Dependency - Active Dependent Inventory



	Abuse/ Neglect	Status Offenses	Total
Cases Pending 1/1/2011	4	0	4
New Petitions Filed in 2011	37	7	44
Other	2	0	2
Total Petitions Available for Processing	43	7	50
Processed by:			
Adjudicated Dependent			
Judge	20	6	26
Master	0	0	0
Adjudicated NOT Dependent			
Judge	3	0	3
Master	0	0	0
Withdrawn/Dismissed/Inactive	12	1	13
Other	5	0	5
Total Petitions Processed	40	7	47
Cases Pending 12/31/2011	3	0	3

Data provided by CPCMS

Abuse/Neglect and Status Offenses New Cases Filed, 2002-2011



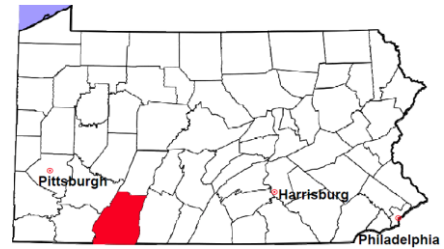
Note: (1) Dependency data for 2002-2010 were collected manually. Dependency data for 2011 were provided by CPCMS. (2) Data for 2009 are not available.

Somerset County

2011 Population Estimate: 77,405

Class of County: 6th

No. of Common Pleas Court Judgeships: 3



2011 Juvenile Dependency - Adjudicated Dependent Inventory

	Abuse/ Neglect	Status Offenses	Total	
Cases Pending 1/1/2011	82	7	89	
New Adjudicated Dependent Cases	20	6	26	
Other	2	0	2	
Total Adjudicated Dependent Cases	104	13	117	
<u>Court Supervision Terminated:</u>				
Family Reunification	20	2	22	36.7%
Adoption	5	0	5	8.3%
Placement with a Relative/Guardian	19	2	21	35.0%
Aged Out	6	1	7	11.7%
Other Permanency Outcomes*	1	1	2	3.3%
Other**	3	0	3	5.0%
Total Adjudicated Dependent Cases Terminated	54	6	60	100.0%
Cases Pending 12/31/2011	50	7	57	

Data provided by CPCMS

* Other Permanency Outcomes include: adjudicated delinquent, death due to natural causes, emancipation, permanent living arrangement, and parent has come forward.

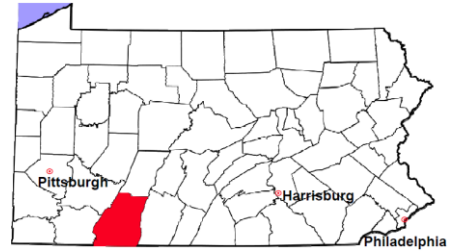
** Other includes cases where Court Supervision is terminated due to transfer out of jurisdiction, withdrawal and administrative closures.

Somerset County

2011 Population Estimate: 77,405

Class of County: 6th

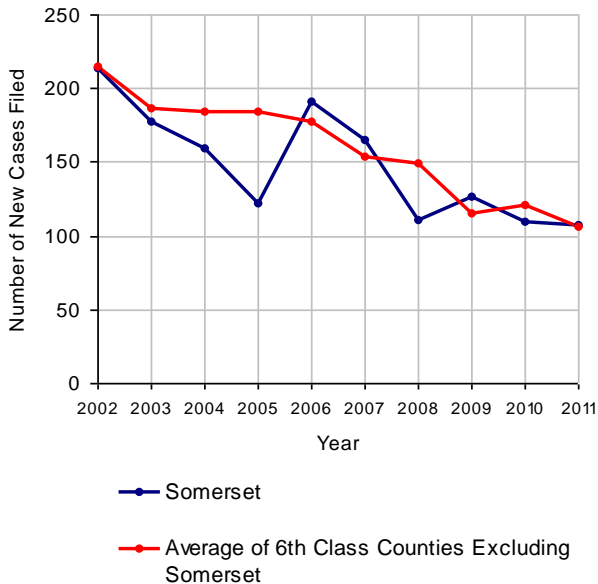
No. of Common Pleas Court Judgeships: 3



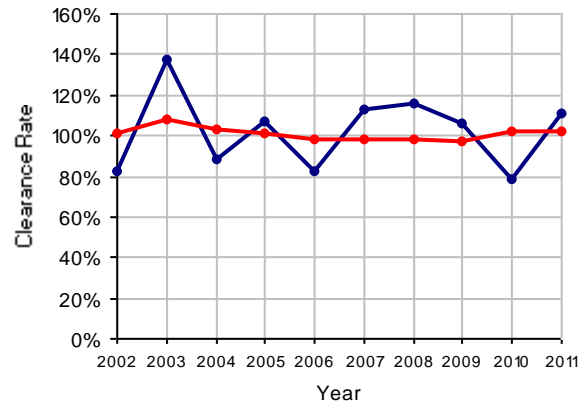
2011 Juvenile Delinquency

	No. of Cases
Cases Pending 1/1/2011	55
New Cases Filed in 2011	108
Cases Available for Processing	163
Processed By:	
Judge	99 82.5%
Non-Judicial Officer	21 17.5%
Other	0
Cases Processed	120 100.0%
Cases Pending 12/31/2011	43

Juvenile Delinquency New Cases Filed, 2002-2011

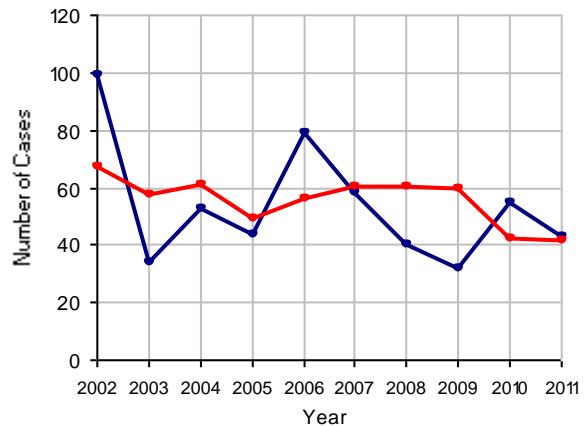


Clearance Rate, 2002-2011



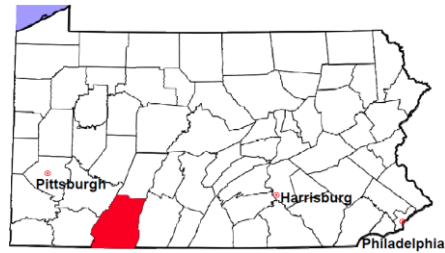
Note: Clearance Rate = Cases Processed / New Cases Filed

Cases Pending at the End of Year, 2002-2011



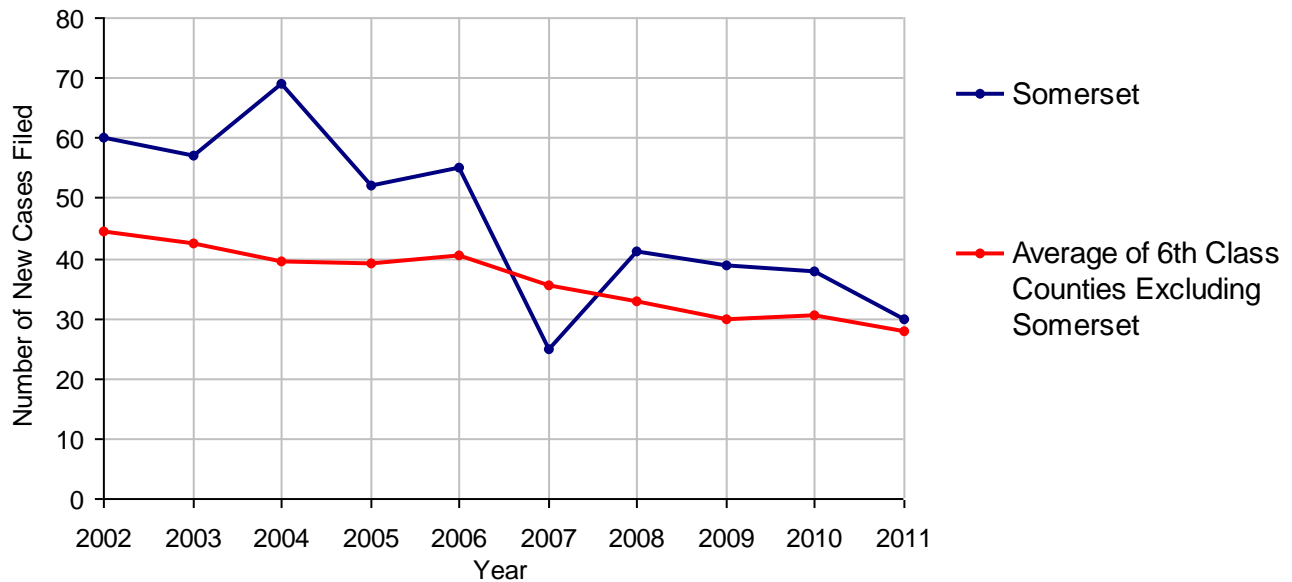
Somerset County

2011 Population Estimate: 77,405
 Class of County: 6th
 No. of Common Pleas Court Judgeships: 3



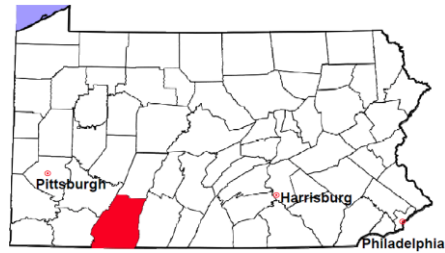
2011 Accounts	No. of Cases
Cases Pending 1/1/2011	2
New Cases Filed in 2011	30
Cases Available for Processing	32
Processed By:	
Contested before a Judge	2 7.7%
Contested before a Non-judicial Officer	7 26.9%
Uncontested	17 65.4%
Other	0
Cases Processed	26 100.0%
Cases Pending 12/31/2011	6

Accounts New Cases Filed, 2002-2011



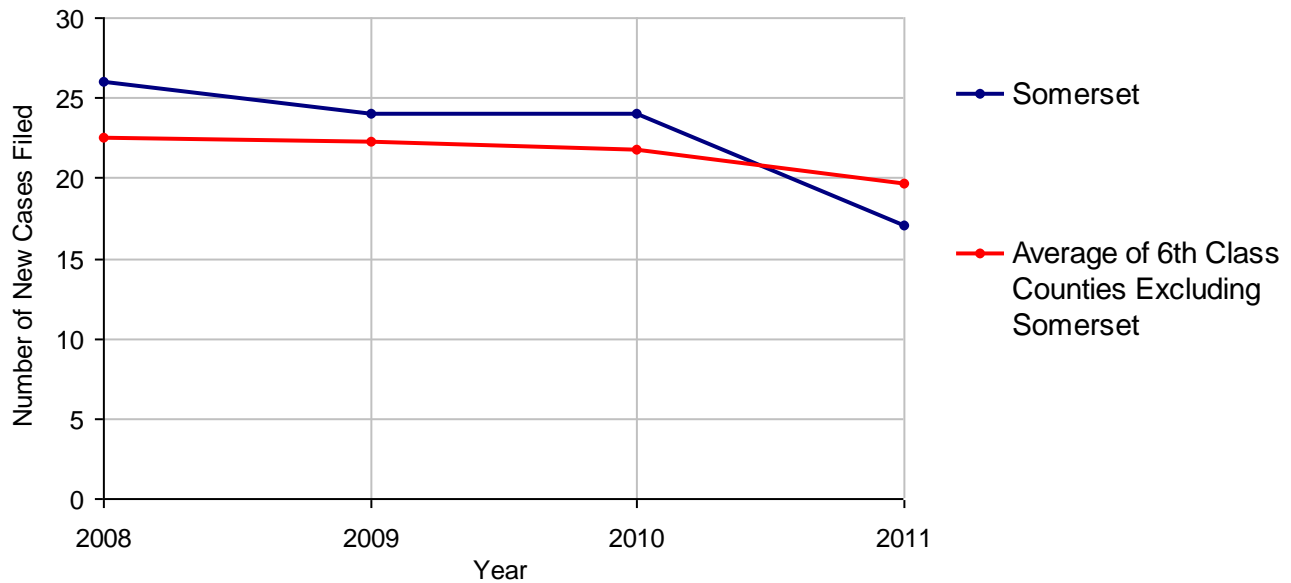
Somerset County

2011 Population Estimate: 77,405
 Class of County: 6th
 No. of Common Pleas Court Judgeships: 3



2011 Adoptions		No. of Cases	
Cases Pending 1/1/2011		2	
New Cases Filed in 2011		17	
Cases Available for Processing		19	
Processed By:			
Contested before a Judge	Granted	0	
	Denied	0	
Uncontested	Granted	17	100.0%
	Denied	0	
Other		0	
Cases Processed		17	100.0%
Cases Pending 12/31/2011		2	

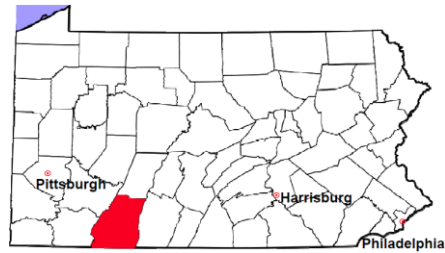
Adoptions New Cases Filed, 2008-2011



Note: Prior to 2008, each petition was counted as one new case, regardless of the number of children listed on the petition. Starting in 2008, each child listed on a petition is counted as a separate case. Therefore, statistics for the years since 2008 should not be compared to those for the years prior to 2008.

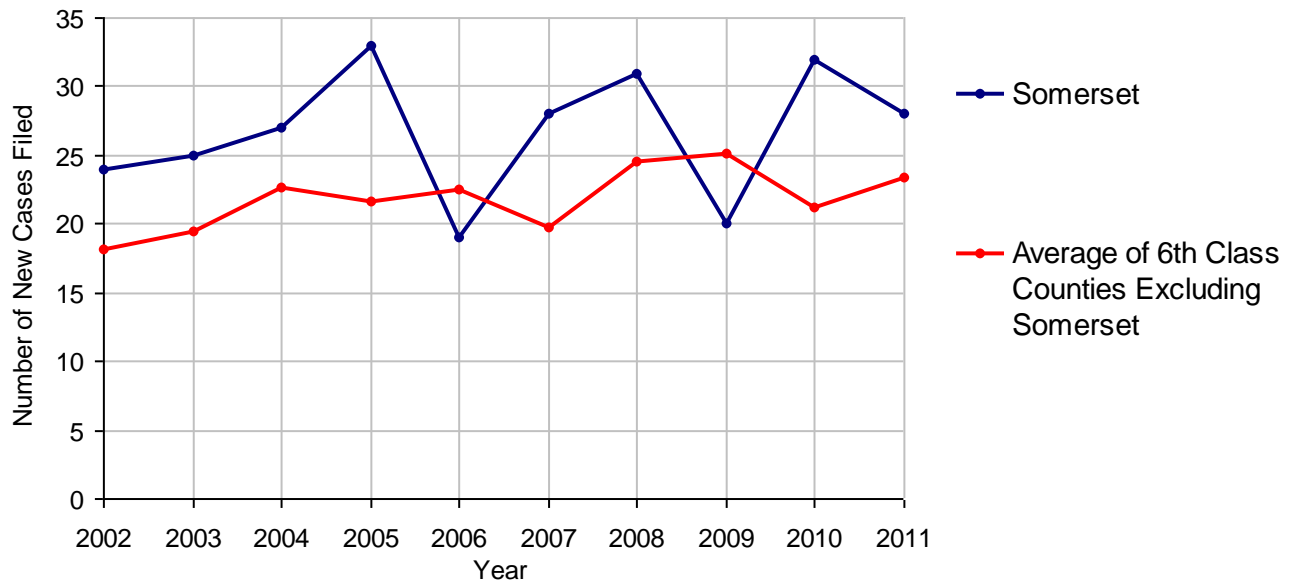
Somerset County

2011 Population Estimate: 77,405
 Class of County: 6th
 No. of Common Pleas Court Judgeships: 3



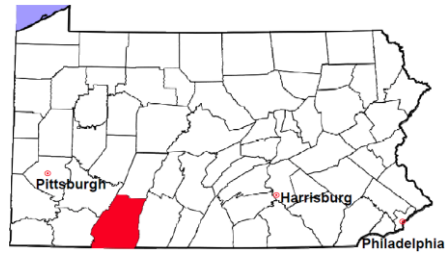
2011 Relinquishments/Terminations	No. of Cases
Cases Pending 1/1/2011	7
New Cases Filed in 2011	28
Cases Available for Processing	35
Processed By:	
Contested before a Judge	1 7.1%
Uncontested	13 92.9%
Other	0
Cases Processed	14 100.0%
Cases Pending 12/31/2011	21

Relinquishments/Terminations New Cases Filed, 2002-2011



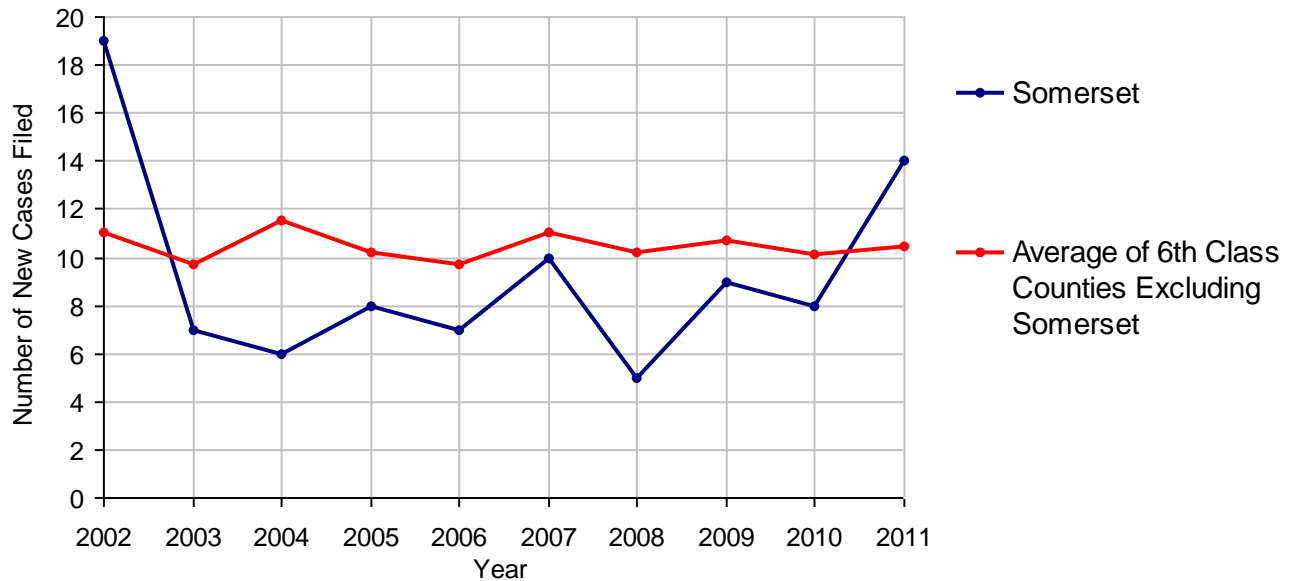
Somerset County

2011 Population Estimate: 77,405
 Class of County: 6th
 No. of Common Pleas Court Judgeships: 3



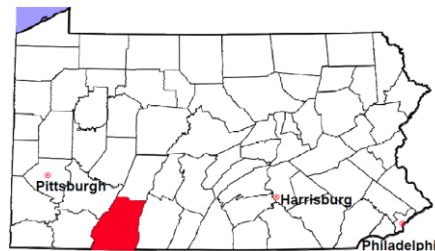
2011 Appointment of Guardians		No. of Cases
Cases Pending 1/1/2011		3
New Cases Filed in 2011		14
Cases Available for Processing		17
Processed By:		
Contested before a Judge		0
Uncontested	9	100.0%
Other		0
Cases Processed	9	100.0%
Cases Pending 12/31/2011		8

Appointment of Guardians New Cases Filed, 2002-2011



Somerset County

2011 Population Estimate: 77,405
Class of County: 6th
No. of Common Pleas Court Judgeships: 3



2011 Jury Activity and Performance Measures

A. Juror Days	897
B. Number Sent to Voir Dire	498
Voir Dire Attendance Rate (B/A * 100)	55.5%
C. Number of Jurors Selected	181
Juror Selection Rate (C/B * 100)	36.3%

Note: In mid-2011, AOPC began utilizing the National Center for State Courts' Jury Managers' Toolbox for collecting jury data. This has resulted in limited jury performance measures being reported for 2011. Additional data will be available in 2012.