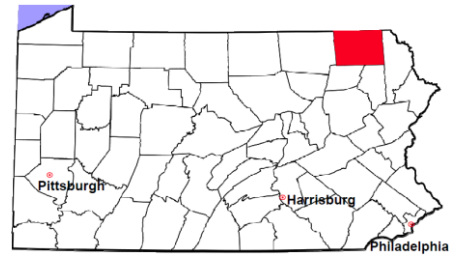


Susquehanna County

2011 Population Estimate: 43,192

Class of County: 6th

No. of Common Pleas Court Judgeships: 1



2011 Criminal	No. of Cases
---------------	--------------

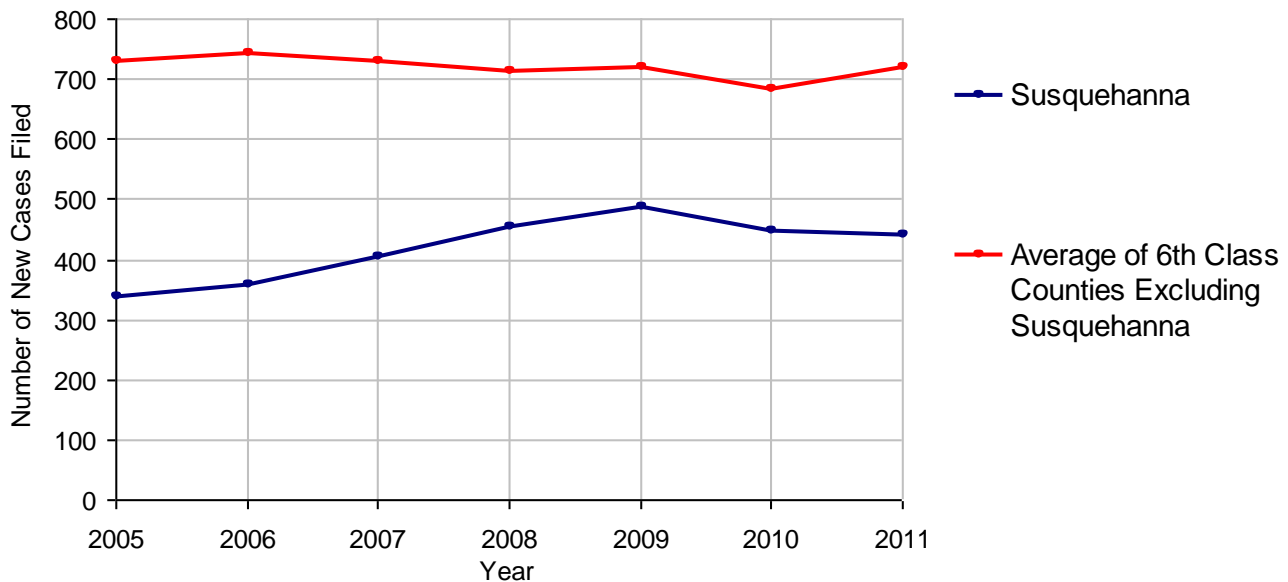
Cases Pending 1/1/2011	178
New Cases Filed in 2011	443
Reopened Cases	14
Cases Available for Disposition	635
Disposed by:	
Withdrawn/Dismissed	22 4.9%
ARD	114 25.5%
Guilty Plea	285 63.8%
Non-Jury Trial	2 0.4%
Jury Trial	2 0.4%
Inactive	10 2.2%
Other	12 2.7%
Total Cases Disposed	447 100.0%
Cases Pending 12/31/2011	188
Cases Awaiting Sentencing	36



Age of Pending Cases as of 12/31/2011		
0-60 Days	79	42.0%
61-120 Days	44	23.4%
121-180 Days	23	12.2%
181-240 Days	19	10.1%
241-300 Days	10	5.3%
301-360 Days	5	2.7%
Over 360 Days	8	4.3%
Total	188	100.0%

Data provided by CPCMS

Criminal New Cases Filed, 2005-2011

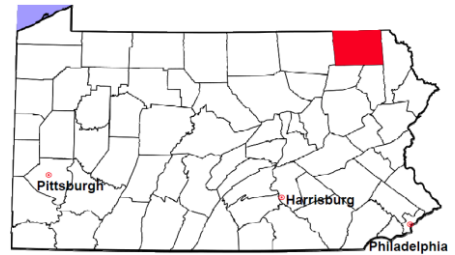


Susquehanna County

2011 Population Estimate: 43,192

Class of County: 6th

No. of Common Pleas Court Judgeships: 1



2011 Criminal - New Cases by Case Type



Case Type	Felony	Misdemeanor	Summary /Ungraded	Total
Person	34	20	1	55
Property	104	53	0	157
Drug	15	20	0	35
Weapon	1	1	0	2
Public Order	15	19	0	34
Motor Vehicle - DWI/DUI	0	158	0	158
Motor Vehicle - Other	0	0	0	0
Other	2	0	0	2
Total	171	271	1	443
	38.6%	61.2%	0.2%	100.0%

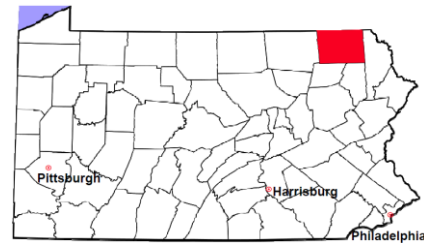
Data provided by CPCMS

Susquehanna County

2011 Population Estimate: 43,192

Class of County: 6th

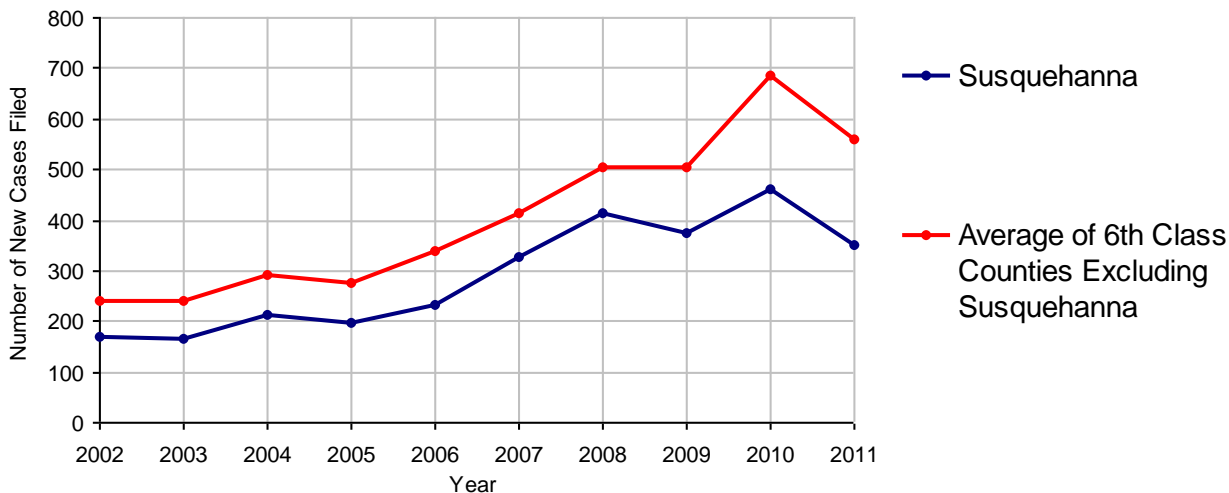
No. of Common Pleas Court Judgeships: 1



2011 Civil	Civil Action	Other	Total
Cases Pending 1/1/2011	129	108	237
Docketed Cases	231	120	351
Arbitration Appeals	0	0	0
Transferred In	0	0	0
Returned to Active	0	0	0
Cases Available for Processing	360	228	588
Disposed By:			
Default Judgments	115	37	152
Cases Decided by Arbitration Board	1	0	1
Dispositive Motions	0	0	0
Settlements	54	21	75
Moved to Inactive Status	0	0	0
Transferred/Withdrawn	0	1	1
Pa.R.J.A. 1901 Administrative Purge	0	0	0
Other	2	1	3
Jury Trial	0	0	0
Non-Jury Trial	0	0	0
Total Cases Disposed	172	60	232
Cases Pending 12/31/2011	188	168	356

Age of Pending Cases as of 12/31/2011 (Civil Action Only)		
0-6 months	85	45.2%
7-12 months	51	27.1%
13-18 months	52	27.7%
19-24 months	0	
25-30 months	0	
31-36 months	0	
37-42 months	0	
43-48 months	0	
49-54 months	0	
55-60 months	0	
61-66 months	0	
67-72 months	0	
Over 72 months	0	
Total	188	100.0%

Docketed Cases, 2002-2011



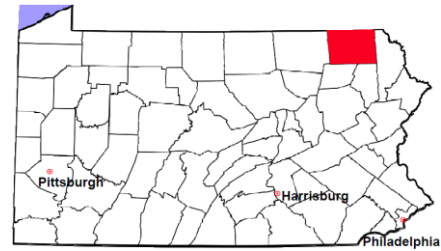
Note: Prior to June 2010, docketed cases under the "Other" category were not reported. The reporting of these cases starting from June 2010 may contribute to an increase in docketed cases from 2009 to 2010.

Susquehanna County

2011 Population Estimate: 43,192

Class of County: 6th

No. of Common Pleas Court Judgeships: 1



2011 Civil - Docketed Cases Listed by Case Type

TORT (does not include mass tort)

Intentional	1
Malicious Prosecution	0
Motor Vehicle	22
Nuisance	0
Premise Liability	6
Product Liability	1
Slander/Libel/Defamation	0
Other	3

MASS TORT

Asbestos	0
Tobacco	0
Toxic Tort - DES	0
Toxic Tort - Implant	0
Toxic Waste	0
Other	0

PROFESSIONAL LIABILITY

Dental	0
Legal	0
Medical Malpractice	0
Other	0

CONTRACT

(does not include judgments)

Buyer Plaintiff	2
Debt Collection:	
Credit Card	131
Other	45
Employment Dispute:	
Discrimination	0
Other	4
Other	13

REAL PROPERTY

Ejectment*	8
Eminent Domain/ Condemnation*	0
Ground Rent	0
Landlord/Tenant Dispute	3
Mortgage Forclosures:	
Residential*	61
Commercial*	1
Partition of Real Property*	6
Quiet Title*	12
Other*	9

CIVIL APPEALS

Administrative Agencies

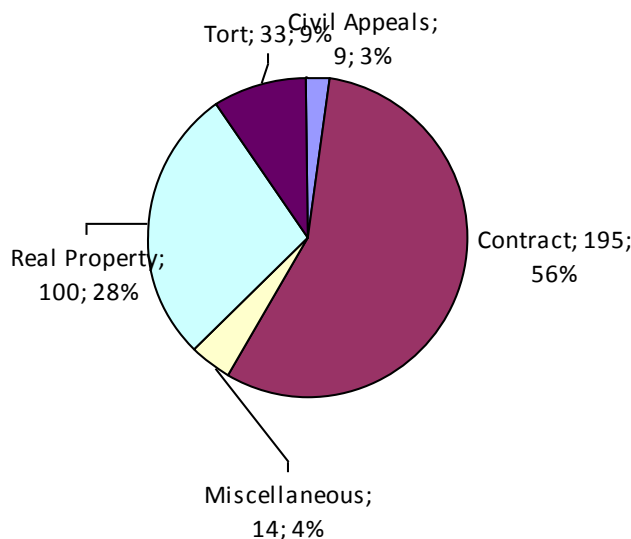
Board of Assessment*	0
Board of Elections*	0
Dept. of Transportation*	0
Zoning Board*	2
Statutory Appeal - Other*	1
Other*	6

MISCELLANEOUS

Common Law/ Statutory Arbitration*	0
Declaratory Judgment*	2
Mandamus*	0
Non-Domestic Relations Restraining Order*	0
Quo Warranto*	0
Replevin*	7
Other*	5

TOTAL DOCKETED CASES: 351

* Civil Other



Of the Docketed Cases:

Pro Se Filings:	0
Class Action Suits:	0
MDJ Appeals:	0

Susquehanna County

2011 Population Estimate: 43,192
 Class of County: 6th
 No. of Common Pleas Court Judgeships: 1

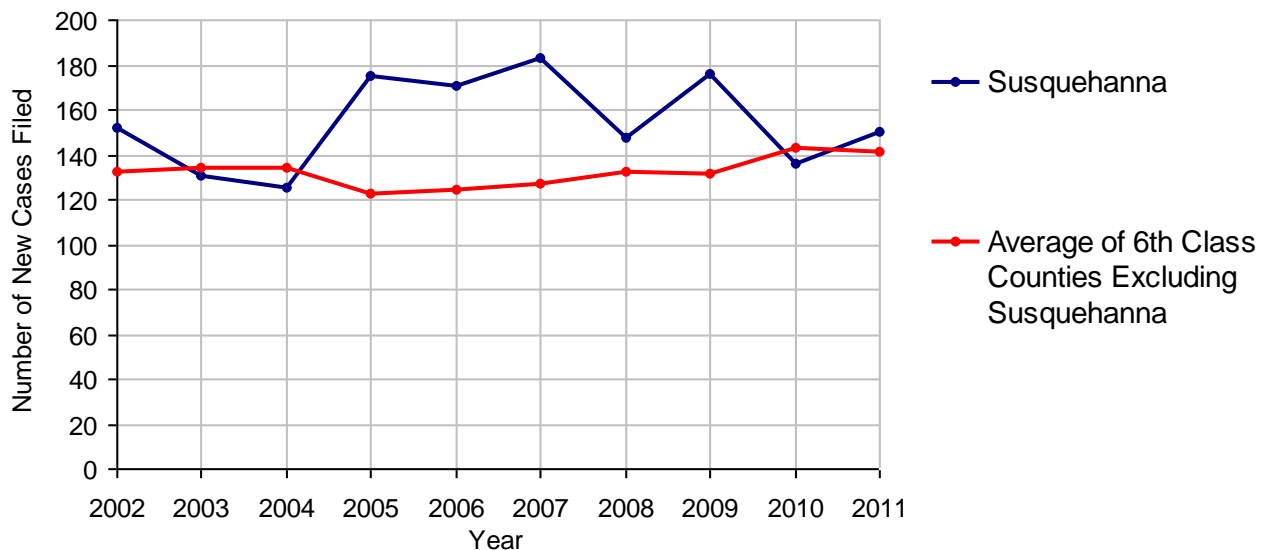


2011 Protection From Abuse

	No. of Petitions
Cases Pending 1/1/2011	8 (R)
New Cases Filed in 2011	150
<i>Of these, Petitions Requesting Temporary Orders: 150 (100.0%)</i>	
<i>Temporary Orders DENIED: 24 (16.0%), Temporary Orders GRANTED: 126 (84.0%)</i>	
Cases Available for Processing	158
Processed By:	
Temporary Order DENIED After Ex Parte Hearing and No Evidentiary Hearing Scheduled	23 16.1%
Temporary Order DISMISSED After Evidentiary Hearing and No Final Order Entered	0
Final Order DENIED After Evidentiary Hearing Before a Judge	13 9.1%
Final Order GRANTED After Evidentiary Hearing Before a Judge	49 34.3%
Plaintiff Did Not Appear For Evidentiary Hearing	6 4.2%
Final Order by STIPULATION OR AGREEMENT Between the Parties	27 18.9%
Petition WITHDRAWN by Plaintiff	23 16.1%
TRANSFERRED to Another Jurisdiction	1 0.7%
DECEASED Party	0
Other	1 0.7%
Cases Processed	143 100.0%
Cases Pending 12/31/2011	15

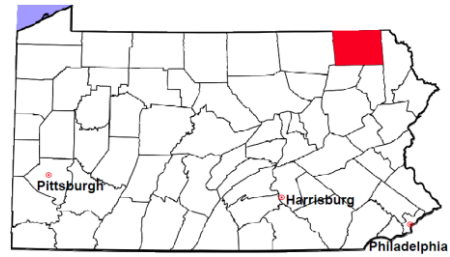
(R) - Revised

PFA New Cases Filed, 2002-2011

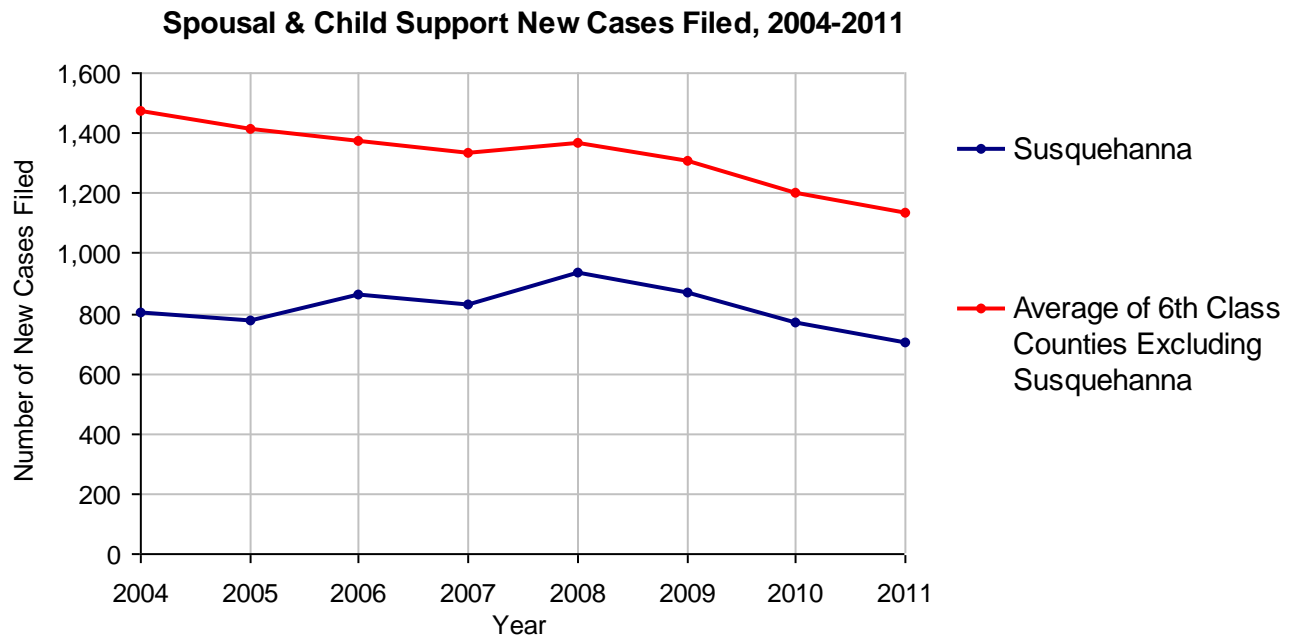


Susquehanna County

2011 Population Estimate: 43,192
 Class of County: 6th
 No. of Common Pleas Court Judgeships: 1



2011 Spousal & Child Support	No. of Petitions	
Cases Pending 1/1/2011	133	
New Cases Filed in 2011	703	
Dockets Transferred In (+)	5	
Dockets Transferred Out (-)	6	
Cases Available for Processing	835	
Processed By:		
Judge	5	0.7%
Intake Officer	644	88.0%
Hearing Officer	83	11.3%
Other	0	
Cases Processed	732	100.0%
Cases Pending 12/31/2011	103	

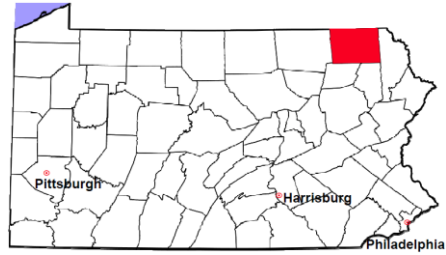


Susquehanna County

2011 Population Estimate: 43,192

Class of County: 6th

No. of Common Pleas Court Judgeships: 1



2011 Custody/Partial Custody/Visitation

No. of
Petitions

Cases Pending 1/1/2011

175

New Cases Filed in 2011

46

Cases Available for Processing

221

Processed By:

Judge

33

100.0%

Non-Judicial Officer

0

Other

0

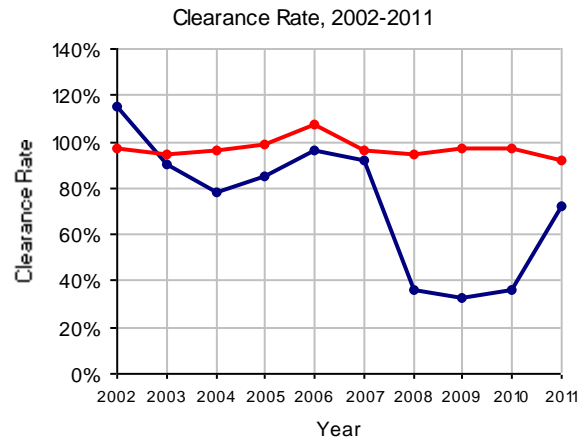
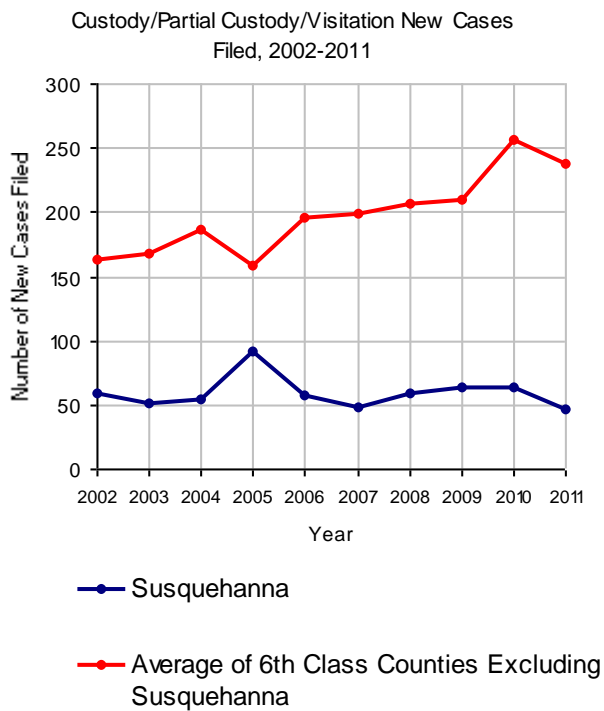
Cases Processed

33

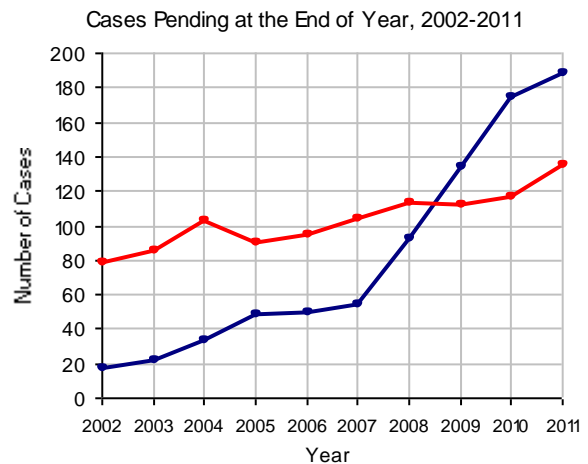
100.0%

Cases Pending 12/31/2011

188

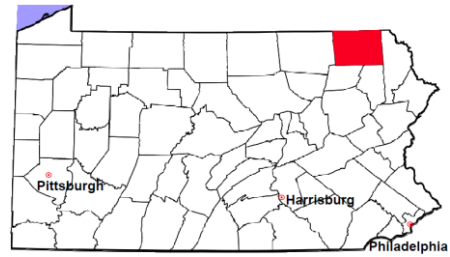


Note: Clearance Rate = Cases Processed / New Cases Filed



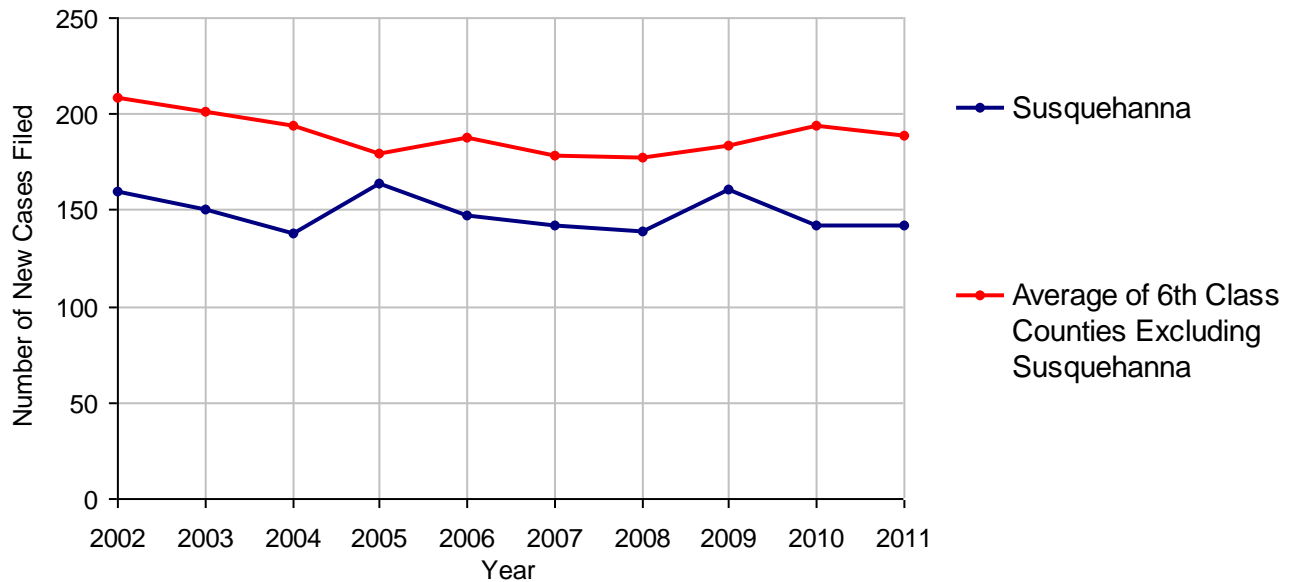
Susquehanna County

2011 Population Estimate: 43,192
 Class of County: 6th
 No. of Common Pleas Court Judgeships: 1



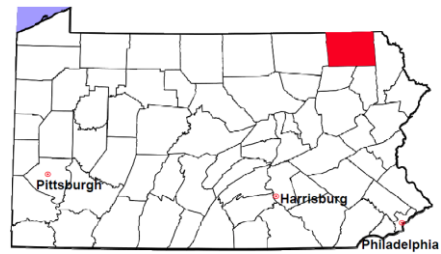
2011 Divorce	No. of Petitions	
Cases Pending 1/1/2011	254	
New Cases Filed in 2011	142	
Cases Available for Processing	396	
Processed By:		
Contested Before a Judge	67	56.3%
Contested Before a Master	7	5.9%
Uncontested	39	32.8%
Other	6	5.0%
Cases Processed	119	100.0%
Cases Pending 12/31/2011	277	

Divorce New Cases Filed, 2002-2011



Susquehanna County

2011 Population Estimate: 43,192
 Class of County: 6th
 No. of Common Pleas Court Judgeships: 1



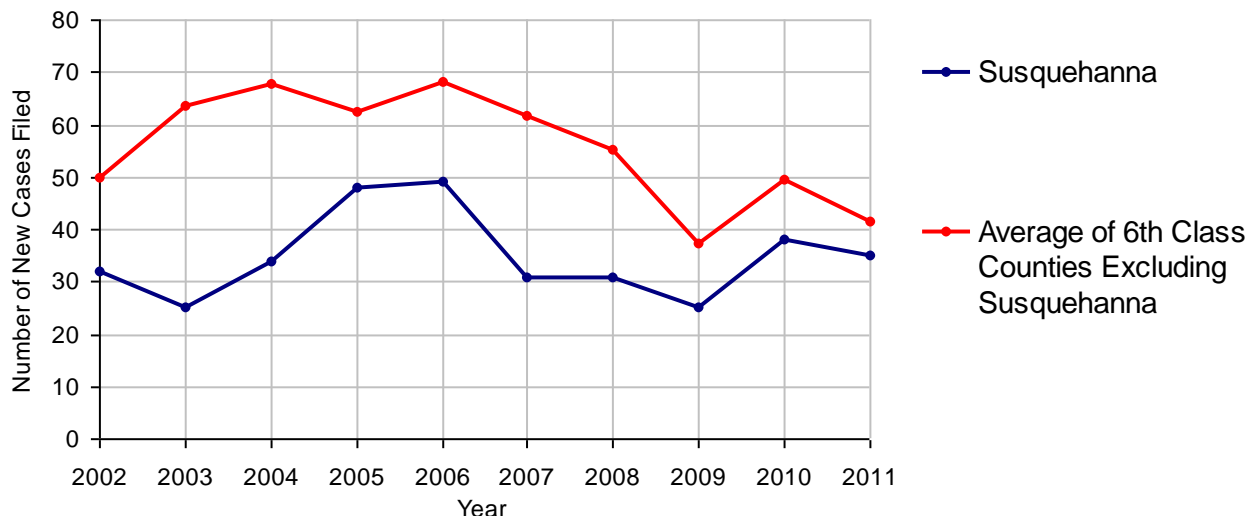
2011 Juvenile Dependency - Active Dependent Inventory



	Abuse/ Neglect	Status Offenses	Total
Cases Pending 1/1/2011	1	0	1
New Petitions Filed in 2011	35	0	35
Other	1	0	1
Total Petitions Available for Processing	37	0	37
Processed by:			
Adjudicated Dependent			
Judge	32	0	32
Master	0	0	0
Adjudicated NOT Dependent			
Judge	0	0	0
Master	0	0	0
Withdrawn/Dismissed/Inactive	4	0	4
Other	1	0	1
Total Petitions Processed	37	0	37
Cases Pending 12/31/2011	0	0	0

Data provided by CPCMS

Abuse/Neglect and Status Offenses New Cases Filed, 2002-2011



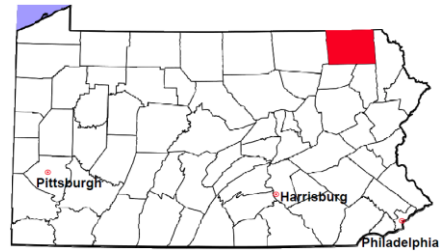
Note: Dependency data for 2002-2010 were collected manually. Dependency data for 2011 were provided by CPCMS.

Susquehanna County

2011 Population Estimate: 43,192

Class of County: 6th

No. of Common Pleas Court Judgeships: 1



2011 Juvenile Dependency - Adjudicated Dependent Inventory

	Abuse/ Neglect	Status Offenses	Total	
Cases Pending 1/1/2011	36	4	40	
New Adjudicated Dependent Cases	32	0	32	
Other	1	0	1	
Total Adjudicated Dependent Cases	69	4	73	
<u>Court Supervision Terminated:</u>				
Family Reunification	8	1	9	37.5%
Adoption	4	1	5	20.8%
Placement with a Relative/Guardian	3	0	3	12.5%
Aged Out	5	0	5	20.8%
Other Permanency Outcomes*	0	0	0	
Other**	2	0	2	8.3%
Total Adjudicated Dependent Cases Terminated	22	2	24	100.0%
Cases Pending 12/31/2011	47	2	49	

Data provided by CPCMS

* Other Permanency Outcomes include: adjudicated delinquent, death due to natural causes, emancipation, permanent living arrangement, and parent has come forward.

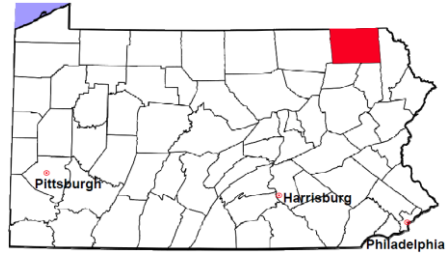
** Other includes cases where Court Supervision is terminated due to transfer out of jurisdiction, withdrawal and administrative closures.

Susquehanna County

2011 Population Estimate: 43,192

Class of County: 6th

No. of Common Pleas Court Judgeships: 1

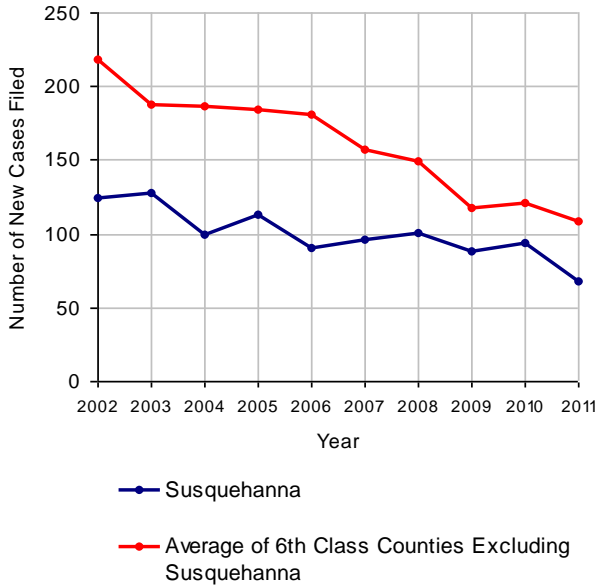


2011 Juvenile Delinquency

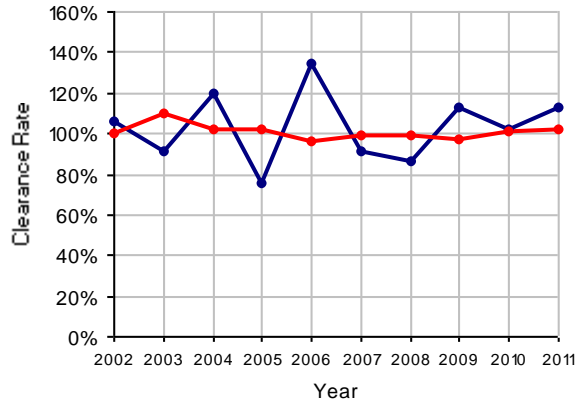
No. of Cases

Cases Pending 1/1/2011	24
New Cases Filed in 2011	68
Cases Available for Processing	92
Processed By:	
Judge	26 33.8%
Non-Judicial Officer	24 31.2%
Other	27 35.1%
Cases Processed	77 100.0%
Cases Pending 12/31/2011	15

Juvenile Delinquency New Cases Filed, 2002-2011

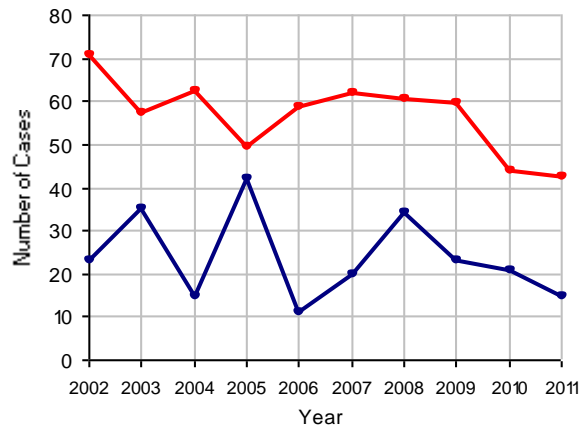


Clearance Rate, 2002-2011



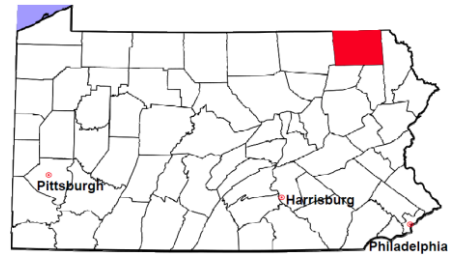
Note: Clearance Rate = Cases Processed / New Cases Filed

Cases Pending at the End of Year, 2002-2011



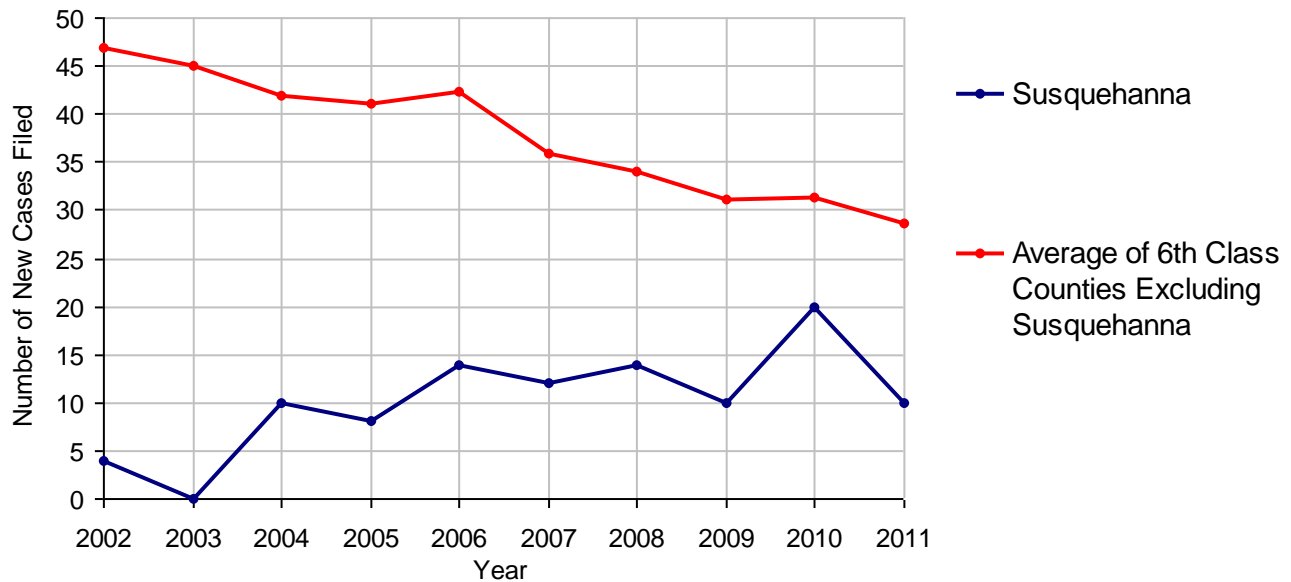
Susquehanna County

2011 Population Estimate: 43,192
 Class of County: 6th
 No. of Common Pleas Court Judgeships: 1



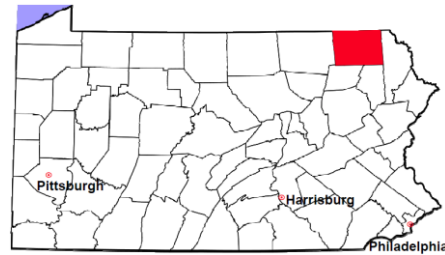
2011 Accounts	No. of Cases	
Cases Pending 1/1/2011	9	
New Cases Filed in 2011	10	
Cases Available for Processing	19	
Processed By:		
Contested before a Judge	1	8.3%
Contested before a Non-judicial Officer	0	
Uncontested	11	91.7%
Other	0	
Cases Processed	12	100.0%
Cases Pending 12/31/2011	7	

Accounts New Cases Filed, 2002-2011



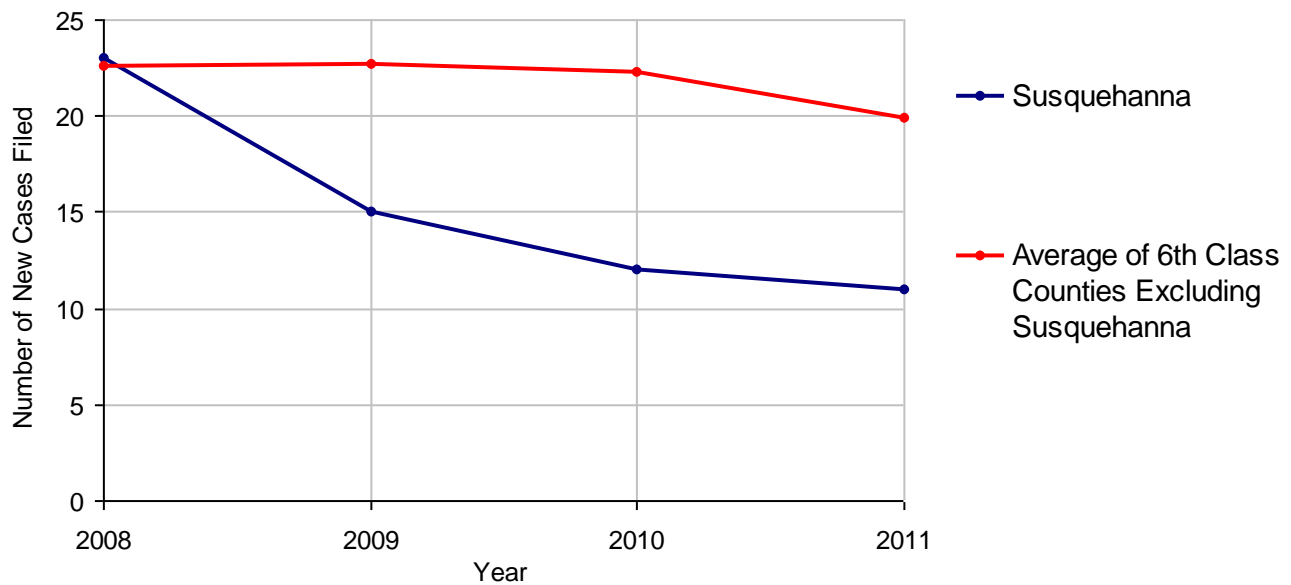
Susquehanna County

2011 Population Estimate: 43,192
 Class of County: 6th
 No. of Common Pleas Court Judgeships: 1



2011 Adoptions		No. of Cases	
Cases Pending 1/1/2011		1	
New Cases Filed in 2011		11	
Cases Available for Processing		12	
Processed By:			
Contested before a Judge	Granted	0	
	Denied	0	
Uncontested	Granted	12	100.0%
	Denied	0	
Other		0	
Cases Processed		12	100.0%
Cases Pending 12/31/2011		0	

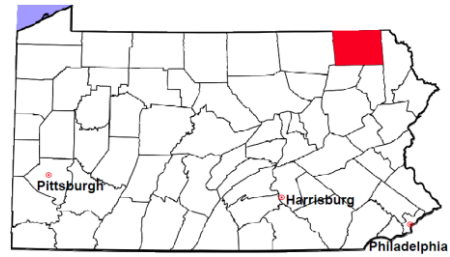
Adoptions New Cases Filed, 2008-2011



Note: Prior to 2008, each petition was counted as one new case, regardless of the number of children listed on the petition. Starting in 2008, each child listed on a petition is counted as a separate case. Therefore, statistics for the years since 2008 should not be compared to those for the years prior to 2008.

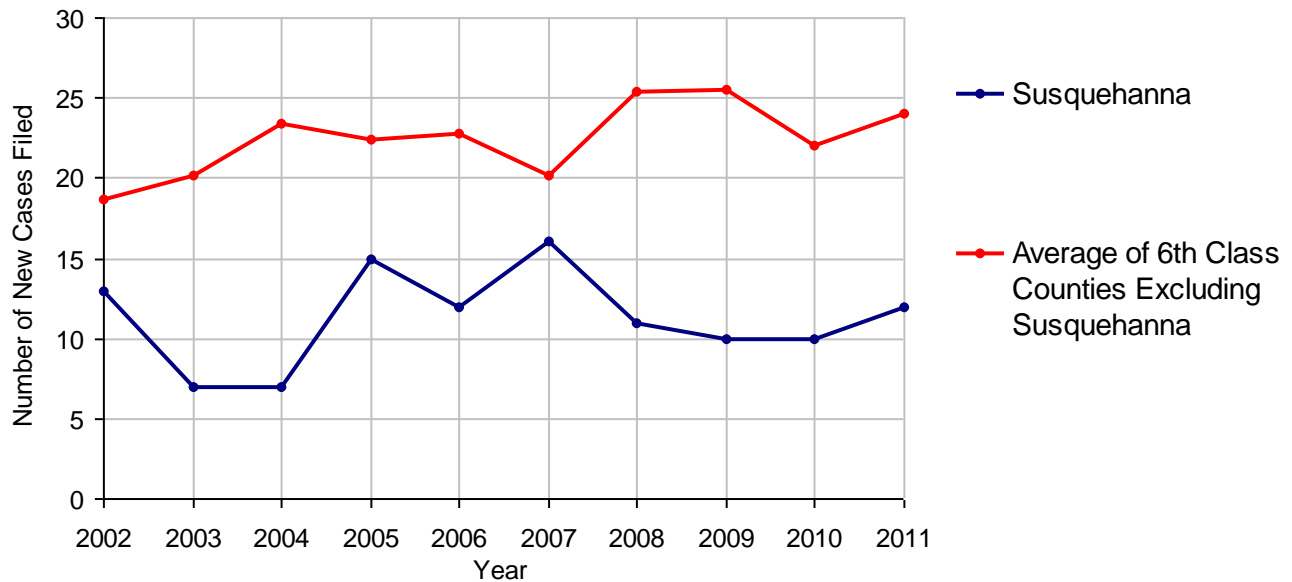
Susquehanna County

2011 Population Estimate: 43,192
 Class of County: 6th
 No. of Common Pleas Court Judgeships: 1



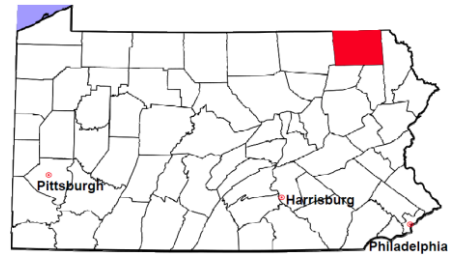
2011 Relinquishments/Terminations	No. of Cases
Cases Pending 1/1/2011	10
New Cases Filed in 2011	12
Cases Available for Processing	22
Processed By:	
Contested before a Judge	3 30.0%
Uncontested	4 40.0%
Other	3 30.0%
Cases Processed	10 100.0%
Cases Pending 12/31/2011	12

Relinquishments/Terminations New Cases Filed, 2002-2011



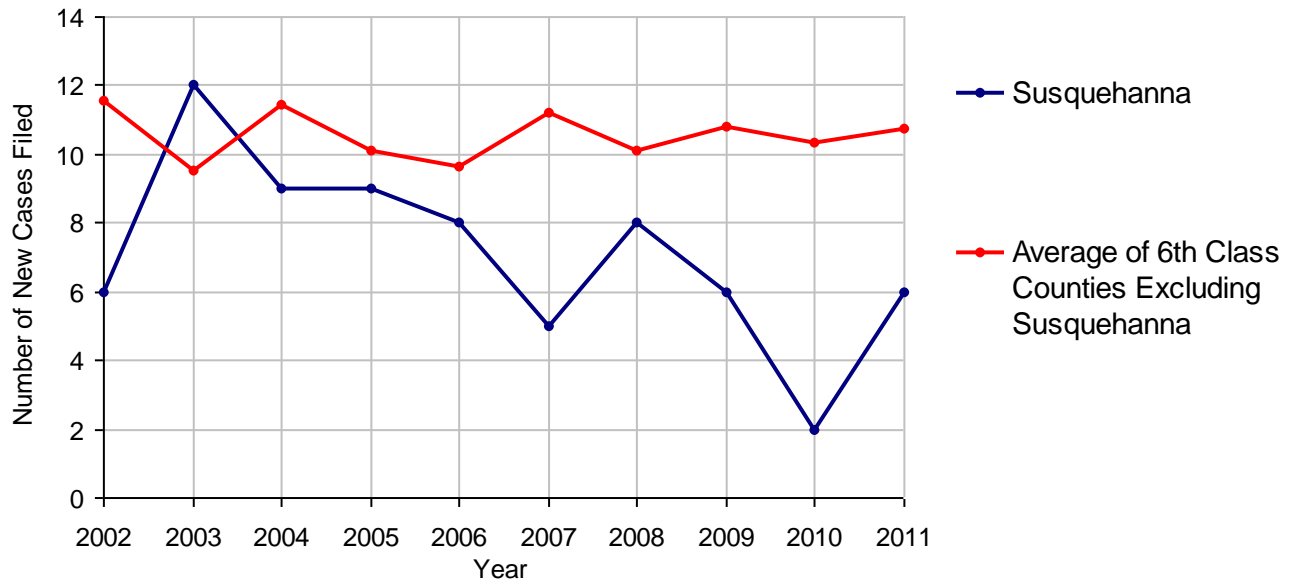
Susquehanna County

2011 Population Estimate: 43,192
 Class of County: 6th
 No. of Common Pleas Court Judgeships: 1



2011 Appointment of Guardians		No. of Cases
Cases Pending 1/1/2011		0
New Cases Filed in 2011		6
Cases Available for Processing		6
Processed By:		
Contested before a Judge		0
Uncontested	3	50.0%
Other	3	50.0%
Cases Processed	6	100.0%
Cases Pending 12/31/2011		0

Appointment of Guardians New Cases Filed, 2002-2011

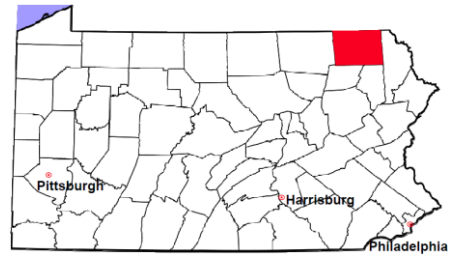


Susquehanna County

2011 Population Estimate: 43,192

Class of County: 6th

No. of Common Pleas Court Judgeships: 1



2011 Jury Activity and Performance Measures

A. Juror Days	292
B. Number Sent to Voir Dire	208
Voir Dire Attendance Rate (B/A * 100)	71.2%
C. Number of Jurors Selected	83
Juror Selection Rate (C/B * 100)	39.9%

Note: In mid-2011, AOPC began utilizing the National Center for State Courts' Jury Managers' Toolbox for collecting jury data. This has resulted in limited jury performance measures being reported for 2011. Additional data will be available in 2012.