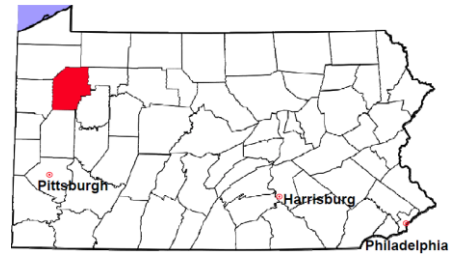


# Venango County

2011 Population Estimate: 54,683

Class of County: 6th

No. of Common Pleas Court Judgeships: 2



2011 Criminal	No. of Cases
---------------	--------------

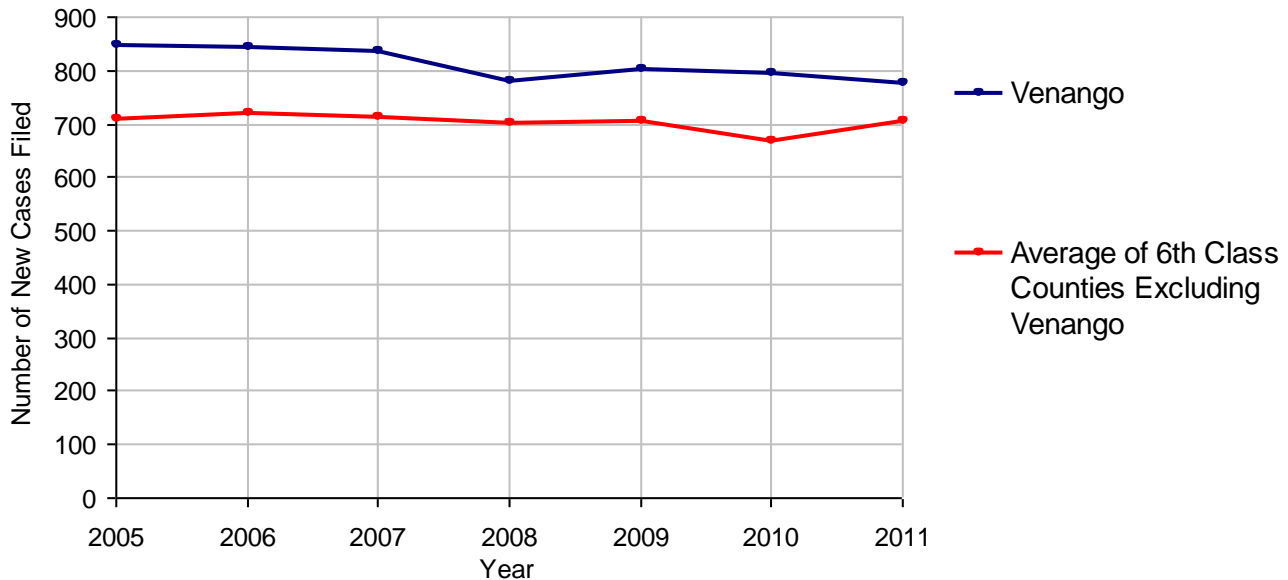
Cases Pending 1/1/2011	299
New Cases Filed in 2011	787
Reopened Cases	34
<b>Cases Available for Disposition</b>	<b>1,120</b>
<b>Disposed by:</b>	
Withdrawn/Dismissed	35 4.1%
ARD	165 19.2%
Guilty Plea	570 66.2%
Non-Jury Trial	15 1.7%
Jury Trial	26 3.0%
Inactive	4 0.5%
Other	46 5.3%
<b>Total Cases Disposed</b>	<b>861 100.0%</b>
<b>Cases Pending 12/31/2011</b>	<b>259</b>
Cases Awaiting Sentencing	62



Age of Pending Cases as of 12/31/2011		
0-60 Days	110	42.5%
61-120 Days	77	29.7%
121-180 Days	26	10.0%
181-240 Days	14	5.4%
241-300 Days	8	3.1%
301-360 Days	6	2.3%
Over 360 Days	18	6.9%
<b>Total</b>	<b>259</b>	<b>100.0%</b>

Data provided by CPCMS

**Criminal New Cases Filed, 2005-2011**

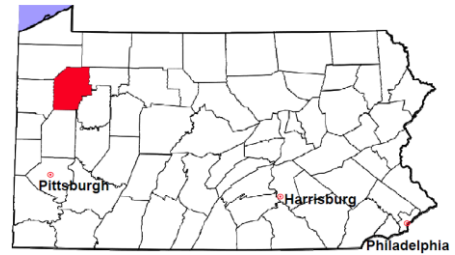


# Venango County

2011 Population Estimate: 54,683

Class of County: 6th

No. of Common Pleas Court Judgeships: 2



## 2011 Criminal - New Cases by Case Type



Case Type	Felony	Misdemeanor	Summary /Ungraded	Total
Person	52	80	0	132
Property	119	110	1	230
Drug	41	52	1	94
Weapon	3	2	0	5
Public Order	24	45	0	69
Motor Vehicle - DWI/DUI	0	249	1	250
Motor Vehicle - Other	2	5	0	7
Other	0	0	0	0
<b>Total</b>	<b>241</b>	<b>543</b>	<b>3</b>	<b>787</b>
	<b>30.6%</b>	<b>69.0%</b>	<b>0.4%</b>	<b>100.0%</b>

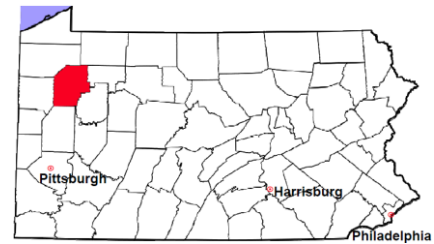
Data provided by CPCMS

# Venango County

2011 Population Estimate: 54,683

Class of County: 6th

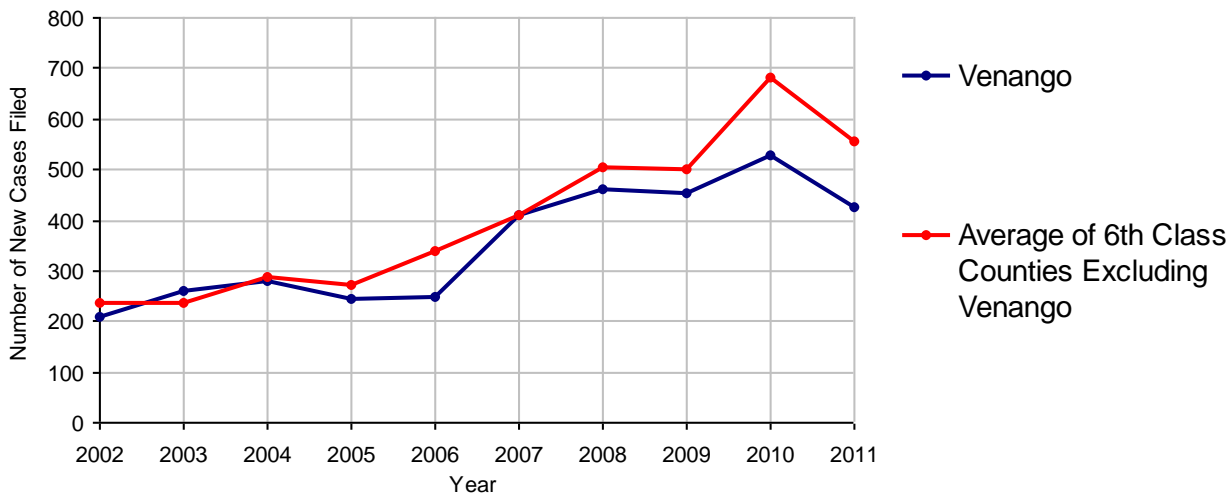
No. of Common Pleas Court Judgeships: 2



<b>2011 Civil</b>	<b>Civil Action</b>	<b>Other</b>	<b>Total</b>
Cases Pending 1/1/2011	186	266	452
Docketed Cases	257	167	424
Arbitration Appeals	0	0	0
Transferred In	0	0	0
Returned to Active	0	0	0
<b>Cases Available for Processing</b>	<b>443</b>	<b>433</b>	<b>876</b>
Disposed By:			
Default Judgments	148	55	203
Cases Decided by Arbitration Board	0	0	0
Dispositive Motions	0	0	0
Settlements	6	0	6
Moved to Inactive Status	0	0	0
Transferred/Withdrawn	0	0	0
Pa.R.J.A. 1901 Administrative Purge	0	0	0
Other	67	39	106
Jury Trial	0	0	0
Non-Jury Trial	0	0	0
<b>Total Cases Disposed</b>	<b>221</b>	<b>94</b>	<b>315</b>
<b>Cases Pending 12/31/2011</b>	<b>222</b>	<b>339</b>	<b>561</b>

Age of Pending Cases as of 12/31/2011 (Civil Action Only)		
0-6 months	106	47.7%
7-12 months	53	23.9%
13-18 months	49	22.1%
19-24 months	13	5.9%
25-30 months	0	
31-36 months	0	
37-42 months	0	
43-48 months	0	
49-54 months	0	
55-60 months	0	
61-66 months	0	
67-72 months	0	
Over 72 months	1	0.5%
<b>Total</b>	<b>222</b>	<b>100.0%</b>

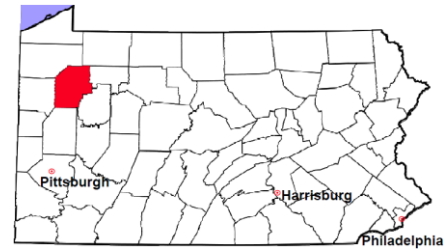
Docketed Cases, 2002-2011



Note: Prior to June 2010, docketed cases under the "Other" category were not reported. The reporting of these cases starting from June 2010 may contribute to an increase in docketed cases from 2009 to 2010.

# Venango County

2011 Population Estimate: 54,683  
 Class of County: 6th  
 No. of Common Pleas Court Judgeships: 2



## 2011 Civil - Docketed Cases Listed by Case Type

### TORT (does not include mass tort)

Intentional	0
Malicious Prosecution	0
Motor Vehicle	30
Nuisance	0
Premise Liability	1
Product Liability	0
Slander/Libel/Defamation	0
Other	5

### MASS TORT

Asbestos	0
Tobacco	0
Toxic Tort - DES	0
Toxic Tort - Implant	0
Toxic Waste	0
Other	2

### PROFESSIONAL LIABILITY

Dental	0
Legal	0
Medical Malpractice	0
Other	0

### CONTRACT

(does not include judgments)

Buyer Plaintiff	2
Debt Collection:	
Credit Card	143
Debt Collection: Other	49
Employment Dispute:	
Discrimination	1
Employment Dispute: Other	0
Other	23

### REAL PROPERTY

Ejectment*	10
Eminent Domain/ Condemnation*	3
Ground Rent	0
Landlord/Tenant Dispute	1
Mortgage Forclosures:	
Residential*	54
Commercial*	37
Partition of Real Property*	3
Quiet Title*	7
Other*	2

### CIVIL APPEALS

*Administrative Agencies*

Board of Assessment*	4
Board of Elections*	0
Dept. of Transportation*	10
Zoning Board*	1
Statutory Appeal - Other*	1
Other*	0

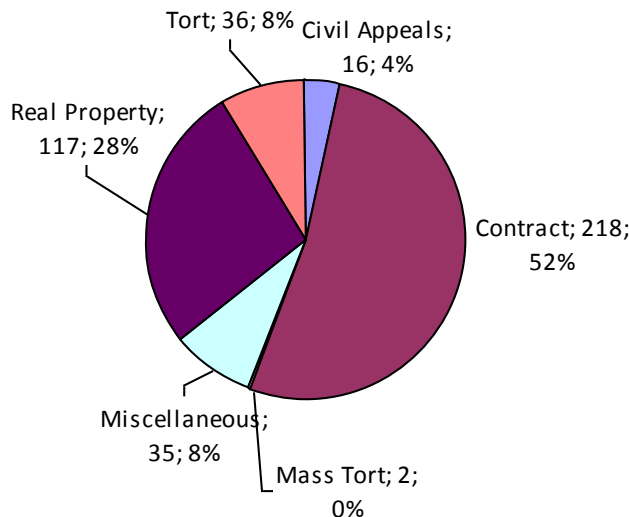
### MISCELLANEOUS

Common Law/ Statutory Arbitration*	0
Declaratory Judgment*	3
Mandamus*	1
Non-Domestic Relations Restraining Order*	0
Quo Warranto*	0
Replevin*	3
Other*	28

### **TOTAL DOCKETED CASES:**

**424**

\* Civil Other



### **Of the Docketed Cases:**

Pro Se Filings:	0
Class Action Suits:	0
MDJ Appeals:	11 2.6%

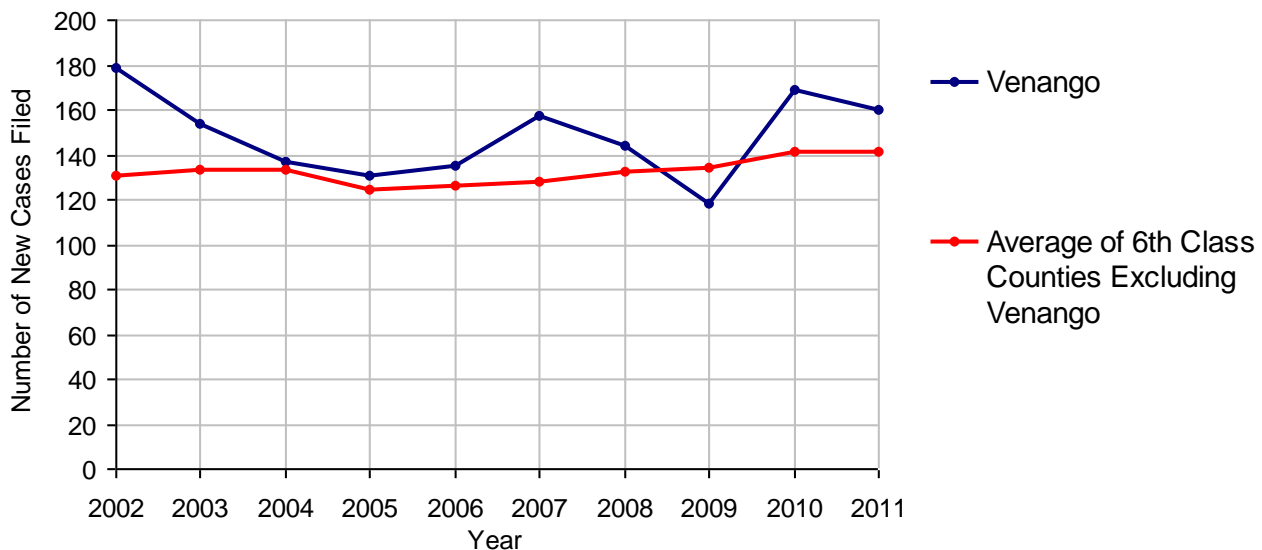
# Venango County

2011 Population Estimate: 54,683  
 Class of County: 6th  
 No. of Common Pleas Court Judgeships: 2



<b>2011 Protection From Abuse</b>	<b>No. of Petitions</b>
Cases Pending 1/1/2011	17
New Cases Filed in 2011	160
<i>Of these, Petitions Requesting Temporary Orders: 157 (98.1%)</i>	
<i>Temporary Orders DENIED: 2 (1.3%), Temporary Orders GRANTED: 155 (98.7%)</i>	
<b>Cases Available for Processing</b>	<b>177</b>
Processed By:	
Temporary Order DENIED After Ex Parte Hearing and No Evidentiary Hearing Scheduled	5 4.2%
Temporary Order DISMISSED After Evidentiary Hearing and No Final Order Entered	0
Final Order DENIED After Evidentiary Hearing Before a Judge	0
Final Order GRANTED After Evidentiary Hearing Before a Judge	108 91.5%
Plaintiff Did Not Appear For Evidentiary Hearing	0
Final Order by STIPULATION OR AGREEMENT Between the Parties	1 0.8%
Petition WITHDRAWN by Plaintiff	2 1.7%
TRANSFERRED to Another Jurisdiction	0
DECEASED Party	1 0.8%
Other	1 0.8%
<b>Cases Processed</b>	<b>118 100.0%</b>
<b>Cases Pending 12/31/2011</b>	<b>59</b>

**PFA New Cases Filed, 2002-2011**

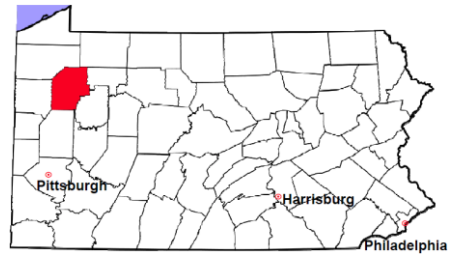


# Venango County

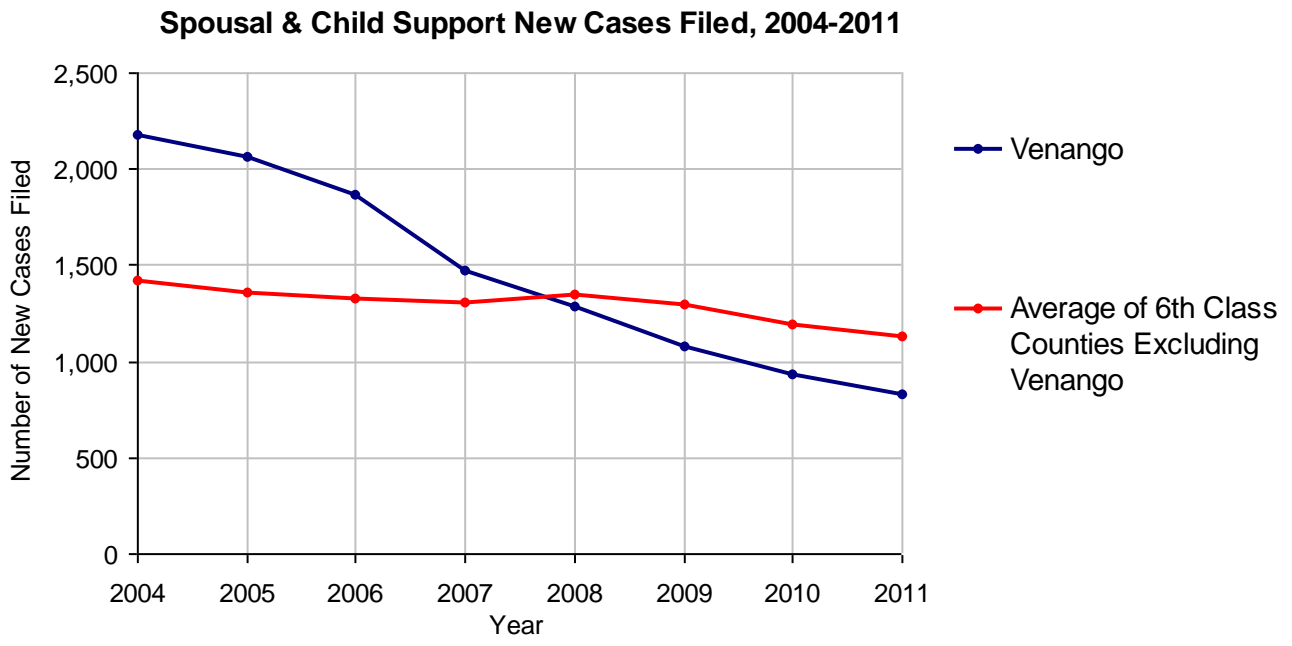
2011 Population Estimate: 54,683

Class of County: 6th

No. of Common Pleas Court Judgeships: 2



<b>2011 Spousal &amp; Child Support</b>	<b>No. of Petitions</b>	
Cases Pending 1/1/2011	137	
New Cases Filed in 2011	833	
Dockets Transferred In (+)	8	
Dockets Transferred Out (-)	22	
<b>Cases Available for Processing</b>	<b>956</b>	
Processed By:		
Judge	3	0.4%
Intake Officer	740	87.8%
Hearing Officer	100	11.9%
Other	0	
<b>Cases Processed</b>	<b>843</b>	<b>100.0%</b>
<b>Cases Pending 12/31/2011</b>	<b>113</b>	

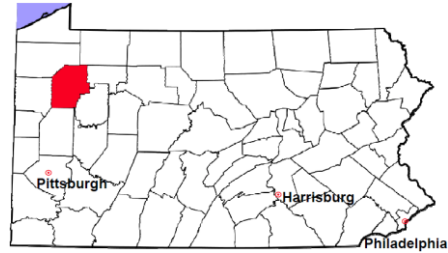


# Venango County

2011 Population Estimate: 54,683

Class of County: 6th

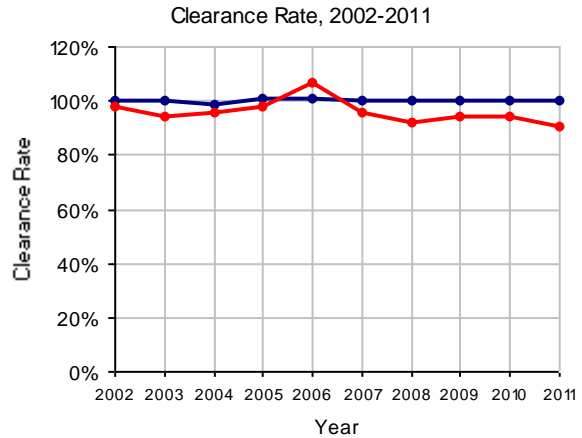
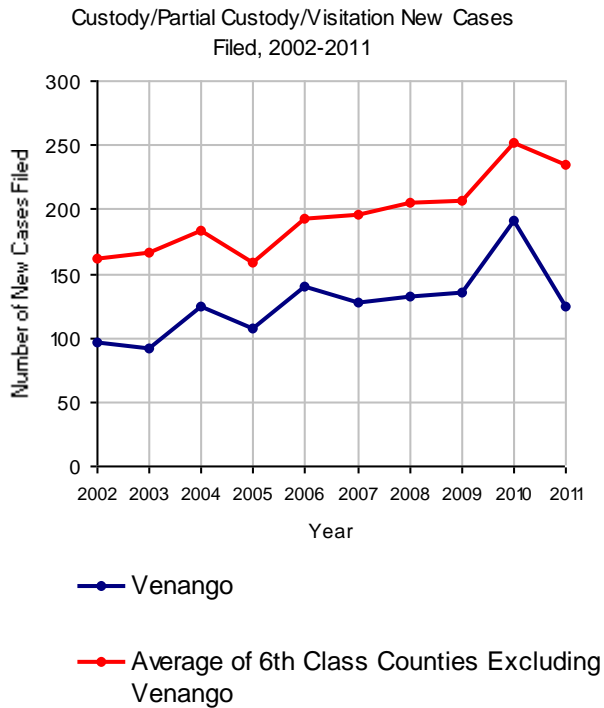
No. of Common Pleas Court Judgeships: 2



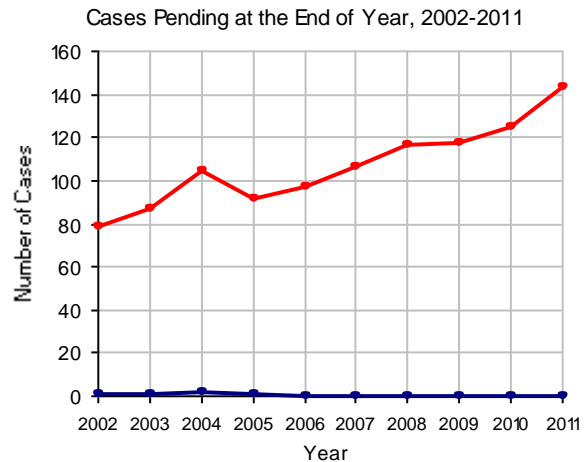
## 2011 Custody/Partial Custody/Visitation

No. of  
Petitions

Cases Pending 1/1/2011	0
New Cases Filed in 2011	124
<b>Cases Available for Processing</b>	<b>124</b>
Processed By:	
Judge	104 83.9%
Non-Judicial Officer	20 16.1%
Other	0
<b>Cases Processed</b>	<b>124 100.0%</b>
<b>Cases Pending 12/31/2011</b>	<b>0</b>

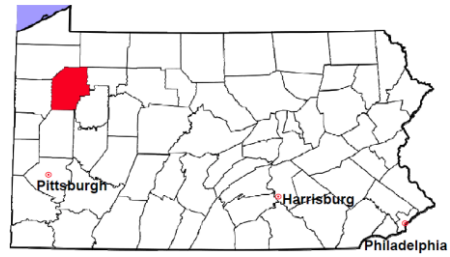


Note: Clearance Rate = Cases Processed / New Cases Filed



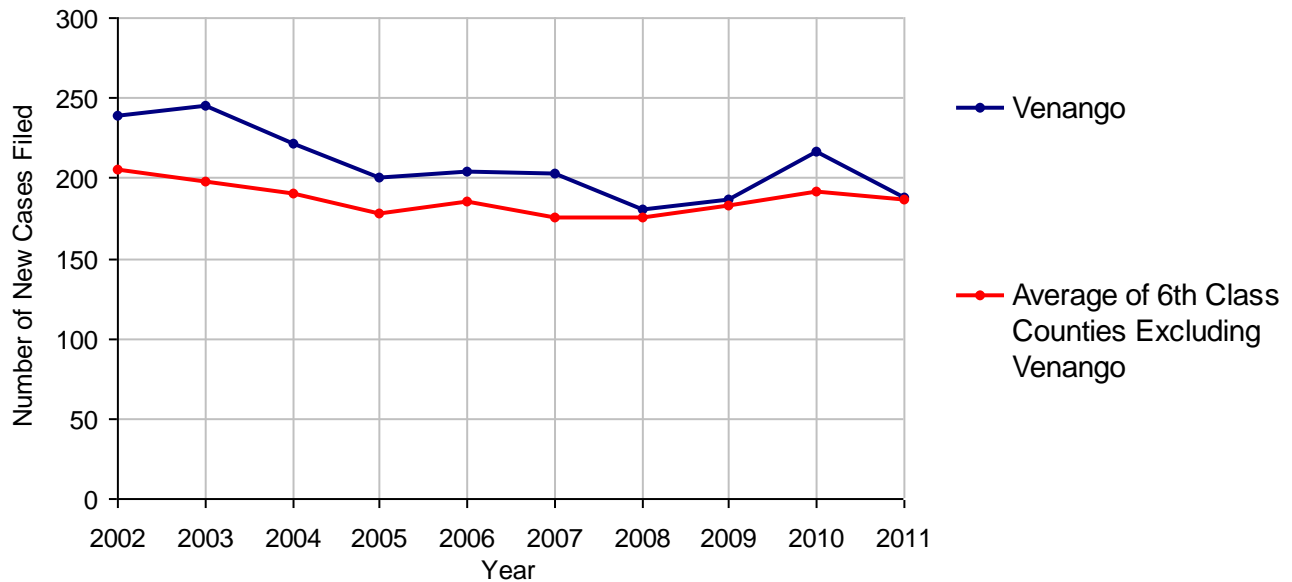
# Venango County

2011 Population Estimate: 54,683  
 Class of County: 6th  
 No. of Common Pleas Court Judgeships: 2



<b>2011 Divorce</b>	<b>No. of Petitions</b>	
Cases Pending 1/1/2011	124	
New Cases Filed in 2011	188	
<b>Cases Available for Processing</b>	<b>312</b>	
Processed By:		
Contested Before a Judge	3	1.7%
Contested Before a Master	17	9.8%
Uncontested	153	88.4%
Other	0	
<b>Cases Processed</b>	<b>173</b>	<b>100.0%</b>
<b>Cases Pending 12/31/2011</b>	<b>139</b>	

**Divorce New Cases Filed, 2002-2011**



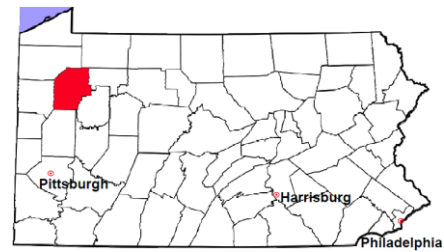


# Venango County

2011 Population Estimate: 54,683

Class of County: 6th

No. of Common Pleas Court Judgeships: 2



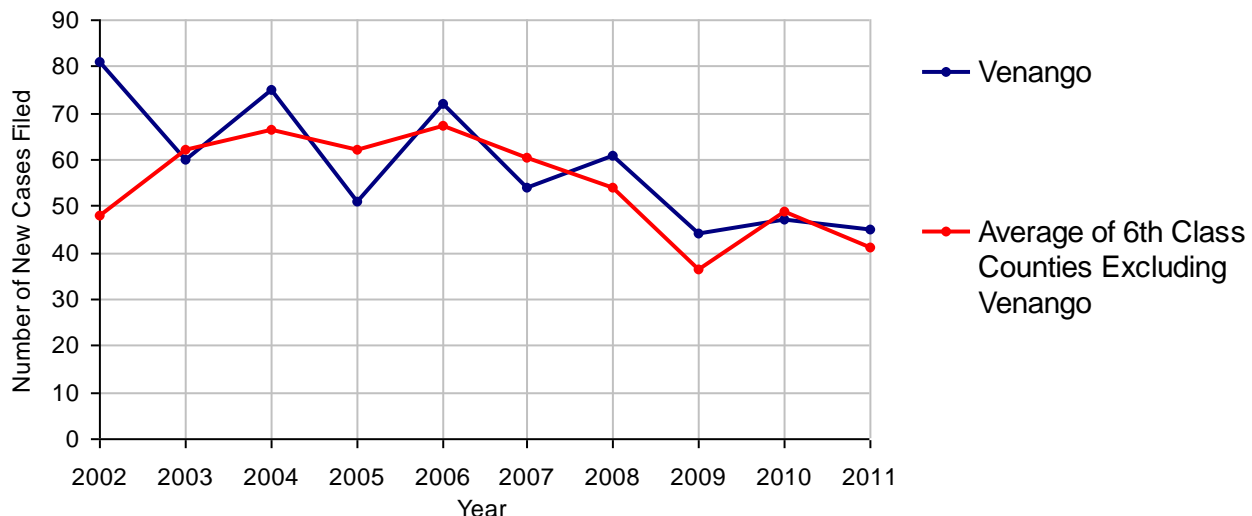
## 2011 Juvenile Dependency - Active Dependent Inventory



	Abuse/ Neglect	Status Offenses	Total
Cases Pending 1/1/2011	6	2	8
New Petitions Filed in 2011	37	8	45
Other	7	4	11
<b>Total Petitions Available for Processing</b>	<b>50</b>	<b>14</b>	<b>64</b>
Processed by:			
Adjudicated Dependent			
Judge	21	9	30
Master	0	0	0
Adjudicated NOT Dependent			
Judge	0	0	0
Master	0	0	0
Withdrawn/Dismissed/Inactive	0	0	0
Other	14	5	19
<b>Total Petitions Processed</b>	<b>35</b>	<b>14</b>	<b>49</b>
<b>Cases Pending 12/31/2011</b>	<b>15</b>	<b>0</b>	<b>15</b>

Data provided by CPCMS

Abuse/Neglect and Status Offenses New Cases Filed, 2002-2011



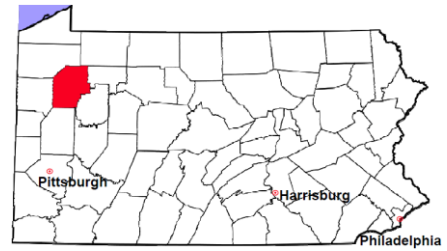
Note: Dependency data for 2002-2010 were collected manually. Dependency data for 2011 were provided by CPCMS.

# Venango County

2011 Population Estimate: 54,683

Class of County: 6th

No. of Common Pleas Court Judgeships: 2



## 2011 Juvenile Dependency - Adjudicated Dependent Inventory

	Abuse/ Neglect	Status Offenses	Total	
Cases Pending 1/1/2011	60	11	71	
New Adjudicated Dependent Cases	21	9	30	
Other	13	9	22	
<b>Total Adjudicated Dependent Cases</b>	<b>94</b>	<b>29</b>	<b>123</b>	
<b><u>Court Supervision Terminated:</u></b>				
Family Reunification	0	0	0	
Adoption	0	0	0	
Placement with a Relative/Guardian	22	5	27	60.0%
Aged Out	4	0	4	8.9%
Other Permanency Outcomes*	0	0	0	
Other**	8	6	14	31.1%
<b>Total Adjudicated Dependent Cases Terminated</b>	<b>34</b>	<b>11</b>	<b>45</b>	<b>100.0%</b>
<b>Cases Pending 12/31/2011</b>	<b>60</b>	<b>18</b>	<b>78</b>	

Data provided by CPCMS

\* Other Permanency Outcomes include: adjudicated delinquent, death due to natural causes, emancipation, permanent living arrangement, and parent has come forward.

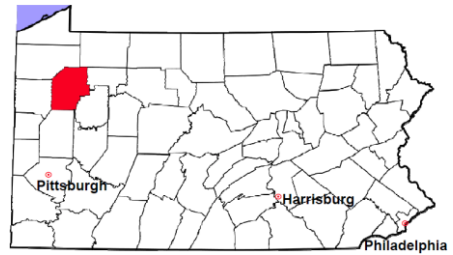
\*\* Other includes cases where Court Supervision is terminated due to transfer out of jurisdiction, withdrawal and administrative closures.

# Venango County

2011 Population Estimate: 54,683

Class of County: 6th

No. of Common Pleas Court Judgeships: 2



## 2011 Juvenile Delinquency

**No. of Cases**

Cases Pending 1/1/2011 121

New Cases Filed in 2011 109

**Cases Available for Processing 230**

Processed By:

Judge 64 39.5%

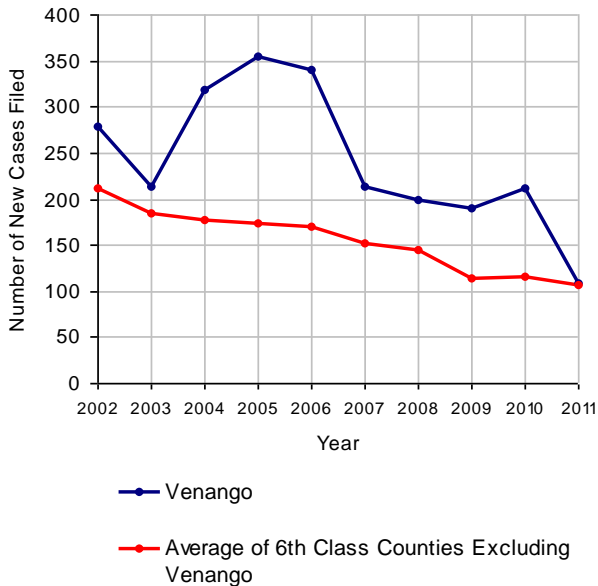
**Non-Judicial Officer 43 26.5%**

Other 55 34.0%

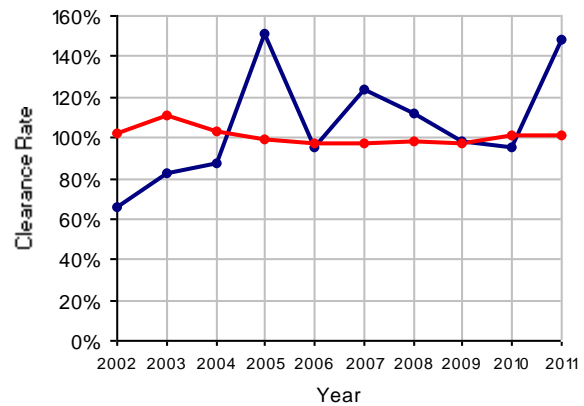
**Cases Processed 162 100.0%**

**Cases Pending 12/31/2011 68**

Juvenile Delinquency New Cases Filed, 2002-2011

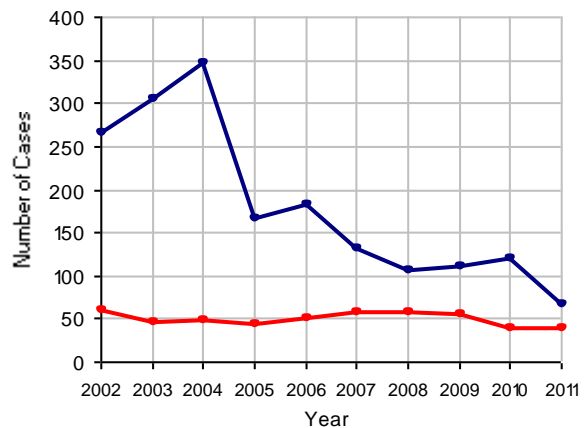


Clearance Rate, 2002-2011



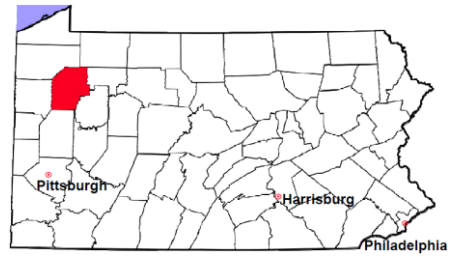
Note: Clearance Rate = Cases Processed / New Cases Filed

Cases Pending at the End of Year, 2002-2011



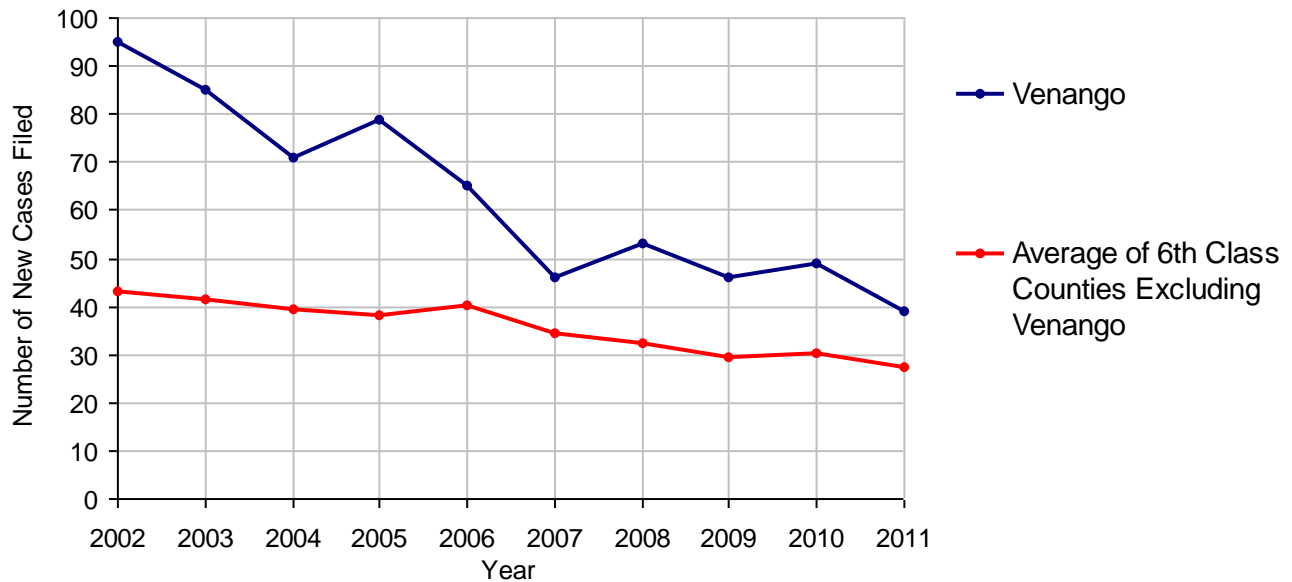
# Venango County

2011 Population Estimate: 54,683  
 Class of County: 6th  
 No. of Common Pleas Court Judgeships: 2



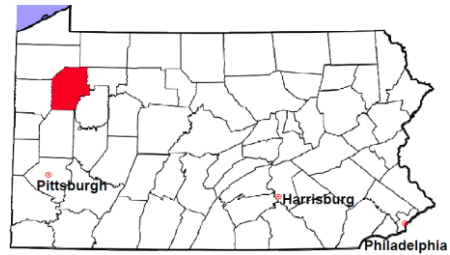
<b>2011 Accounts</b>	<b>No. of Cases</b>	
Cases Pending 1/1/2011	11	
New Cases Filed in 2011	39	
<b>Cases Available for Processing</b>	<b>50</b>	
Processed By:		
Contested before a Judge	0	
Contested before a Non-judicial Officer	0	
Uncontested	38	100.0%
Other	0	
<b>Cases Processed</b>	<b>38</b>	<b>100.0%</b>
<b>Cases Pending 12/31/2011</b>	<b>12</b>	

**Accounts New Cases Filed, 2002-2011**



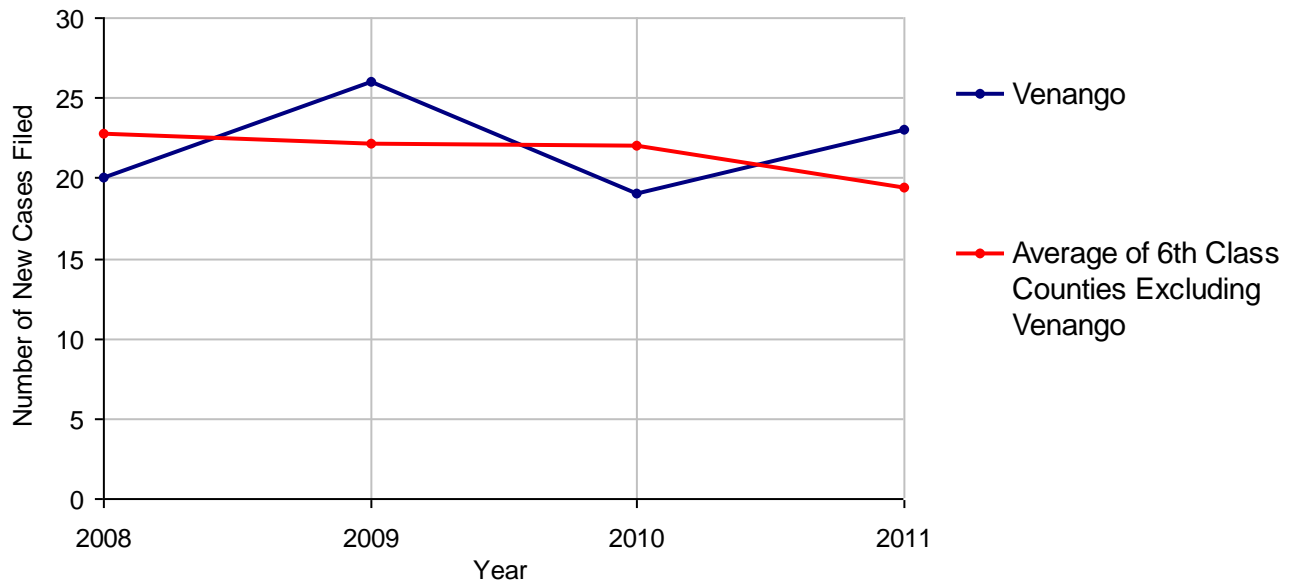
# Venango County

2011 Population Estimate: 54,683  
 Class of County: 6th  
 No. of Common Pleas Court Judgeships: 2



2011 Adoptions		No. of Cases	
Cases Pending 1/1/2011		6	
New Cases Filed in 2011		23	
<b>Cases Available for Processing</b>		<b>29</b>	
Processed By:			
Contested before a Judge	Granted	0	
	Denied	0	
Uncontested	Granted	22	100.0%
	Denied	0	
Other		0	
<b>Cases Processed</b>		<b>22</b>	<b>100.0%</b>
<b>Cases Pending 12/31/2011</b>		<b>7</b>	

Adoptions New Cases Filed, 2008-2011



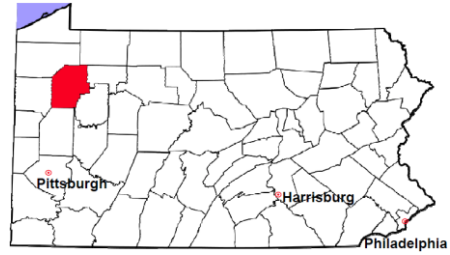
Note: Prior to 2008, each petition was counted as one new case, regardless of the number of children listed on the petition. Starting in 2008, each child listed on a petition is counted as a separate case. Therefore, statistics for the years since 2008 should not be compared to those for the years prior to 2008.

# Venango County

2011 Population Estimate: 54,683

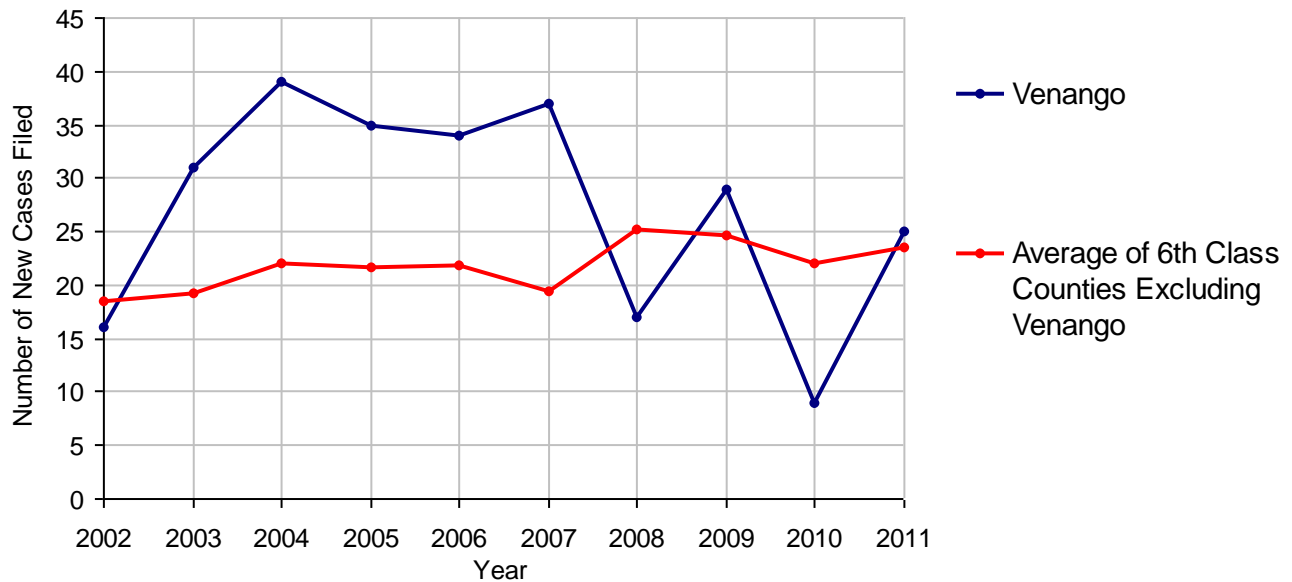
Class of County: 6th

No. of Common Pleas Court Judgeships: 2



<b>2011 Relinquishments/Terminations</b>		<b>No. of Cases</b>
Cases Pending 1/1/2011		12
New Cases Filed in 2011		25
<b>Cases Available for Processing</b>		<b>37</b>
Processed By:		
Contested before a Judge		0
Uncontested		20 100.0%
Other		0
<b>Cases Processed</b>		<b>20 100.0%</b>
<b>Cases Pending 12/31/2011</b>		<b>17</b>

**Relinquishments/Terminations New Cases Filed, 2002-2011**

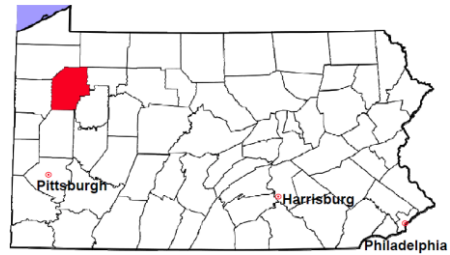


# Venango County

2011 Population Estimate: 54,683

Class of County: 6th

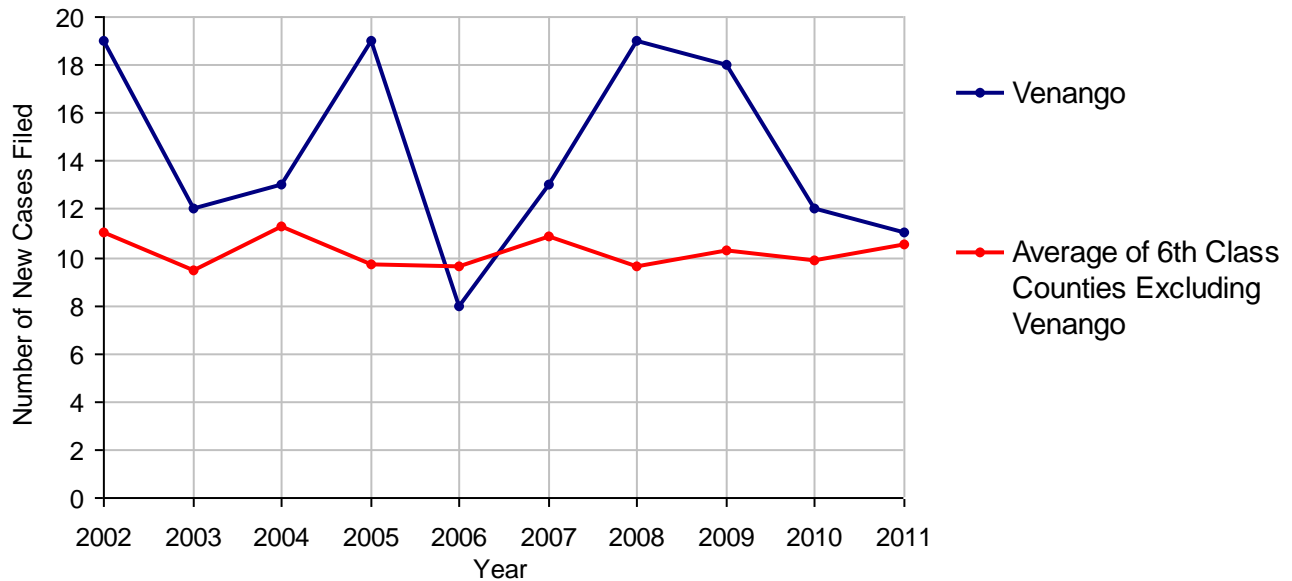
No. of Common Pleas Court Judgeships: 2



## 2011 Appointment of Guardians

	No. of Cases	
Cases Pending 1/1/2011	7	
New Cases Filed in 2011	11	
<b>Cases Available for Processing</b>	<b>18</b>	
Processed By:		
Contested before a Judge	0	
Uncontested	10	100.0%
Other	0	
<b>Cases Processed</b>	<b>10</b>	<b>100.0%</b>
<b>Cases Pending 12/31/2011</b>	<b>8</b>	

Appointment of Guardians New Cases Filed, 2002-2011

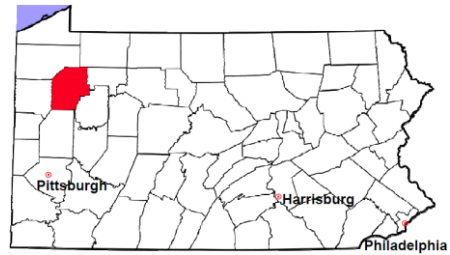


# Venango County

2011 Population Estimate: 54,683

Class of County: 6th

No. of Common Pleas Court Judgeships: 2



---

## 2011 Jury Activity and Performance Measures

---

A. Juror Days	1,552
B. Number Sent to Voir Dire	1,476
Voir Dire Attendance Rate (B/A * 100)	95.1%
C. Number of Jurors Selected	491
Juror Selection Rate (C/B * 100)	33.3%

---

Note: In mid-2011, AOPC began utilizing the National Center for State Courts' Jury Managers' Toolbox for collecting jury data. This has resulted in limited jury performance measures being reported for 2011. Additional data will be available in 2012.