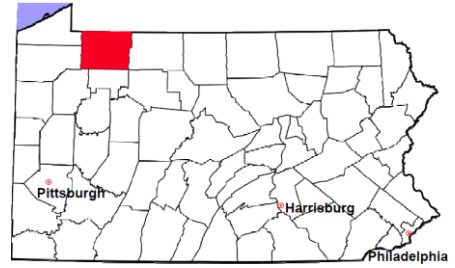


Warren County

2011 Population Estimate: 41,441
 Class of County: 6th
 No. of Common Pleas Court Judgeships: 2
 (Warren and Forest combined)



2011 Criminal No. of Cases

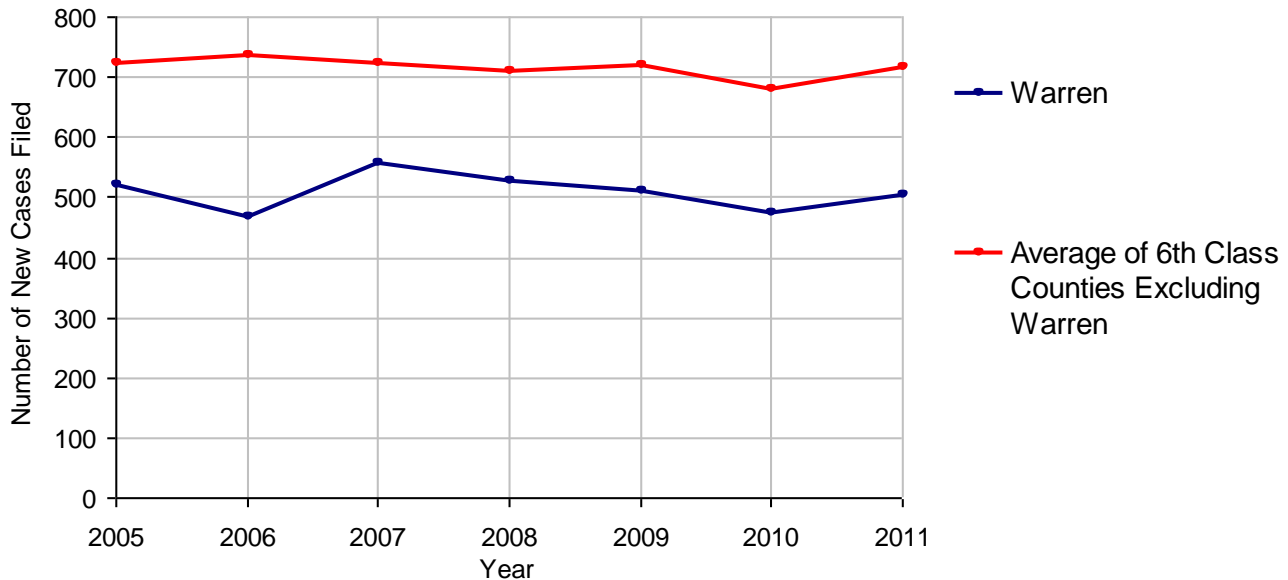
Cases Pending 1/1/2011	163
New Cases Filed in 2011	503
Reopened Cases	26
Cases Available for Disposition	692
Disposed by:	
Withdrawn/Dismissed	35 7.3%
ARD	90 18.8%
Guilty Plea	306 63.9%
Non-Jury Trial	5 1.0%
Jury Trial	10 2.1%
Inactive	9 1.9%
Other	24 5.0%
Total Cases Disposed	479 100.0%
Cases Pending 12/31/2011	213
Cases Awaiting Sentencing	13



Age of Pending Cases as of 12/31/2011		
0-60 Days	89	41.8%
61-120 Days	58	27.2%
121-180 Days	29	13.6%
181-240 Days	13	6.1%
241-300 Days	6	2.8%
301-360 Days	7	3.3%
Over 360 Days	11	5.2%
Total	213	100.0%

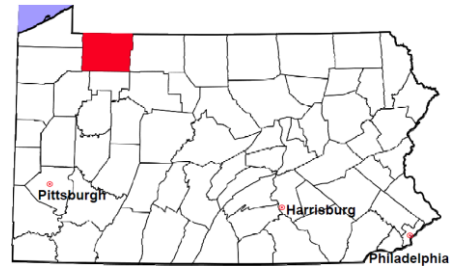
Data provided by CPCMS

Criminal New Cases Filed, 2005-2011



Warren County

2011 Population Estimate: 41,441
 Class of County: 6th
 No. of Common Pleas Court Judgeships: 2
 (Warren and Forest combined)



2011 Criminal - New Cases by Case Type

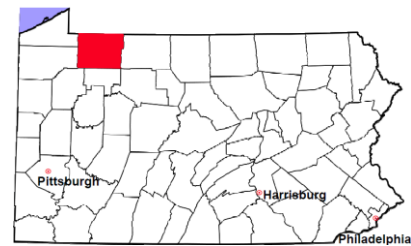


Case Type	Felony	Misdemeanor	Summary /Ungraded	Total
Person	49	63	0	112
Property	96	74	0	170
Drug	23	15	1	39
Weapon	3	1	0	4
Public Order	32	21	0	53
Motor Vehicle - DWI/DUI	0	124	0	124
Motor Vehicle - Other	1	0	0	1
Other	0	0	0	0
Total	204	298	1	503
	40.6%	59.2%	0.2%	100.0%

Data provided by CPCMS

Warren County

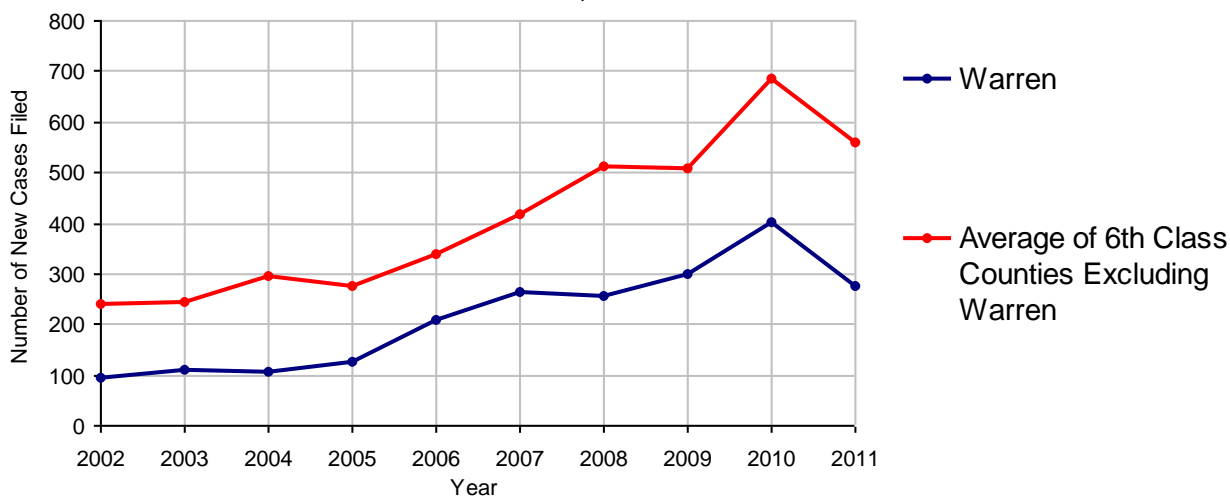
2011 Population Estimate: 41,441
 Class of County: 6th
 No. of Common Pleas Court Judgeships: 2
 (Warren and Forest combined)



2011 Civil	Civil Action	Other	Total
Cases Pending 1/1/2011	307	266	573
Docketed Cases	175	100	275
Arbitration Appeals	0	0	0
Transferred In	0	0	0
Returned to Active	0	0	0
Cases Available for Processing	482	366	848
Disposed By:			
Default Judgments	118	37	155
Cases Decided by Arbitration Board	6	2	8
Dispositive Motions	0	0	0
Settlements	66	35	101
Moved to Inactive Status	2	15	17
Transferred/Withdrawn	3	1	4
Pa.R.J.A. 1901 Administrative Purge	0	0	0
Other	10	13	23
Jury Trial	1	0	1
Non-Jury Trial	0	1	1
Total Cases Disposed	206	104	310
Cases Pending 12/31/2011	276	262	538

Age of Pending Cases as of 12/31/2011 (Civil Action Only)		
0-6 months	59	21.4%
7-12 months	46	16.7%
13-18 months	27	9.8%
19-24 months	21	7.6%
25-30 months	20	7.2%
31-36 months	32	11.6%
37-42 months	23	8.3%
43-48 months	23	8.3%
49-54 months	18	6.5%
55-60 months	3	1.1%
61-66 months	0	
67-72 months	0	
Over 72 months	4	1.4%
Total	276	100.0%

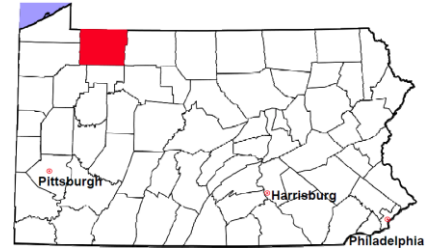
Docketed Cases, 2002-2011



Note: Prior to June 2010, docketed cases under the "Other" category were not reported. The reporting of these cases starting from June 2010 may contribute to an increase in docketed cases from 2009 to 2010.

Warren County

2011 Population Estimate: 41,441
 Class of County: 6th
 No. of Common Pleas Court Judgeships: 2
 (Warren and Forest combined)



2011 Civil - Docketed Cases Listed by Case Type

TORT (does not include mass tort)

Intentional	1
Malicious Prosecution	0
Motor Vehicle	13
Nuisance	0
Premise Liability	4
Product Liability	2
Slander/Libel/Defamation	0
Other	7

MASS TORT

Asbestos	0
Tobacco	0
Toxic Tort - DES	0
Toxic Tort - Implant	0
Toxic Waste	0
Other	1

PROFESSIONAL LIABILITY

Dental	0
Legal	0
Medical Malpractice	1
Other	1

CONTRACT

(does not include judgments)

Buyer Plaintiff	1
Debt Collection:	
Credit Card	91
Other	39
Employment Dispute:	
Discrimination	0
Other	2
Other	12

REAL PROPERTY

Ejectment*	3
Eminent Domain/ Condemnation*	2
Ground Rent	0
Landlord/Tenant Dispute	0
Mortgage Forclosures:	
Residential*	53
Commercial*	14
Partition of Real Property*	1
Quiet Title*	6
Other*	4

CIVIL APPEALS

Administrative Agencies

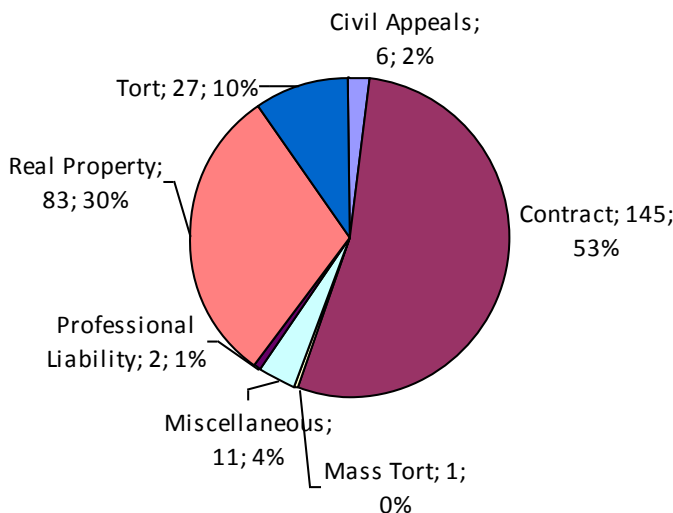
Board of Assessment*	2
Board of Elections*	1
Dept. of Transportation*	1
Zoning Board*	0
Statutory Appeal - Other*	0
Other*	2

MISCELLANEOUS

Common Law/ Statutory Arbitration*	0
Declaratory Judgment*	3
Mandamus*	1
Non-Domestic Relations Restraining Order*	0
Quo Warranto*	0
Replevin*	2
Other*	5

TOTAL DOCKETED CASES: 275

* Civil Other



Of the Docketed Cases:

Pro Se Filings:	0
Class Action Suits:	0
MDJ Appeals:	0

Warren County

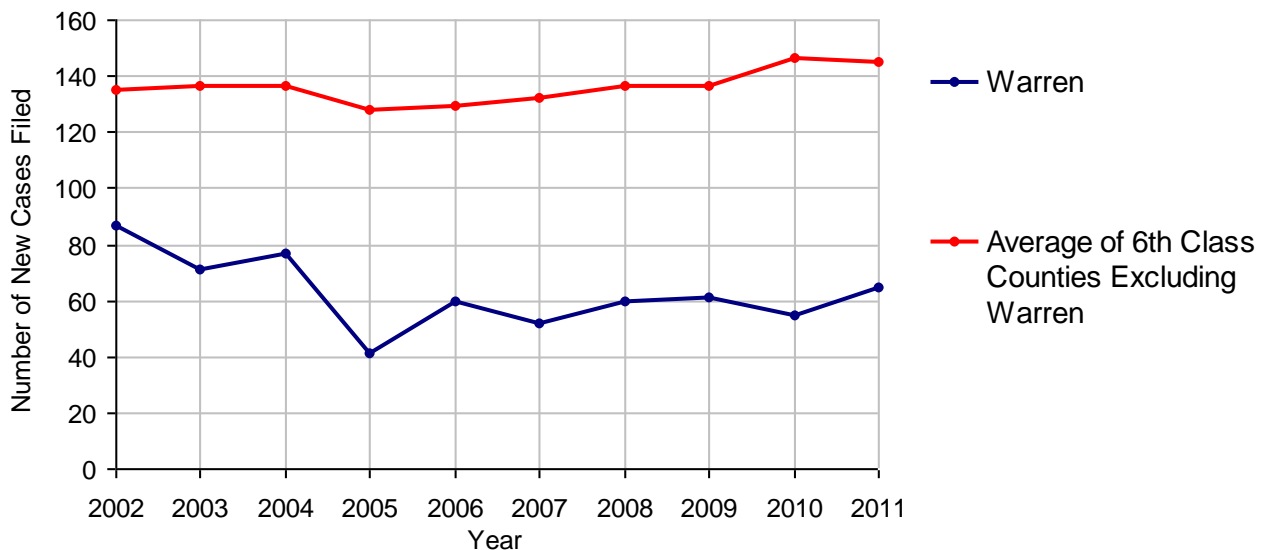
2011 Population Estimate: 41,441
 Class of County: 6th
 No. of Common Pleas Court Judgeships: 2
 (Warren and Forest combined)



2011 Protection From Abuse

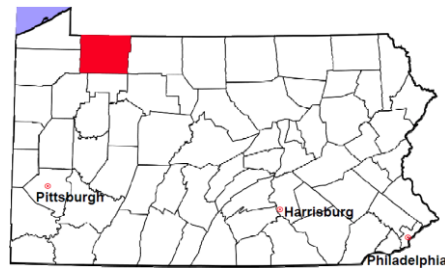
	No. of Petitions
Cases Pending 1/1/2011	2
New Cases Filed in 2011	65
<i>Of these, Petitions Requesting Temporary Orders: 65 (100.0%)</i>	
<i>Temporary Orders DENIED: 6 (9.2%), Temporary Orders GRANTED: 59 (90.8%)</i>	
Cases Available for Processing	67
Processed By:	
Temporary Order DENIED After Ex Parte Hearing and No Evidentiary Hearing Scheduled	6 9.2%
Temporary Order DISMISSED After Evidentiary Hearing and No Final Order Entered	1 1.5%
Final Order DENIED After Evidentiary Hearing Before a Judge	3 4.6%
Final Order GRANTED After Evidentiary Hearing Before a Judge	10 15.4%
Plaintiff Did Not Appear For Evidentiary Hearing	0
Final Order by STIPULATION OR AGREEMENT Between the Parties	36 55.4%
Petition WITHDRAWN by Plaintiff	9 13.8%
TRANSFERRED to Another Jurisdiction	0
DECEASED Party	0
Other	0
Cases Processed	65 100.0%
Cases Pending 12/31/2011	2

PFA New Cases Filed, 2002-2011

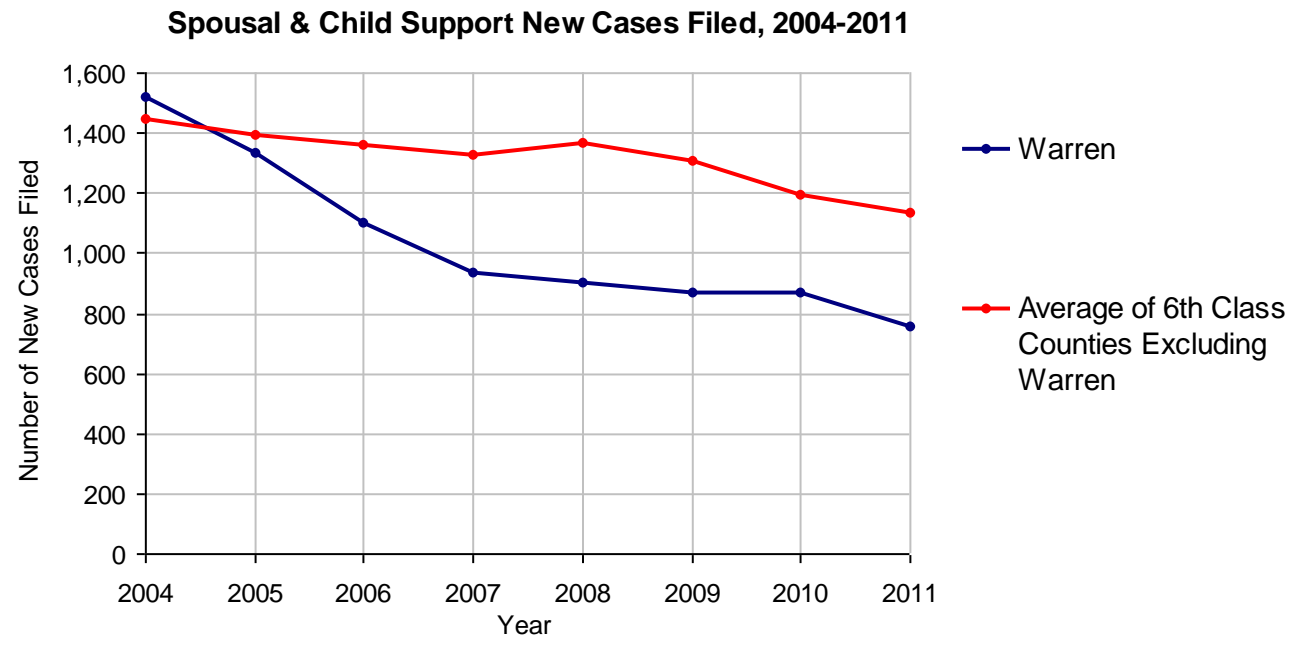


Warren County

2011 Population Estimate: 41,441
 Class of County: 6th
 No. of Common Pleas Court Judgeships: 2
 (Warren and Forest combined)



2011 Spousal & Child Support	No. of Petitions	
Cases Pending 1/1/2011	141	
New Cases Filed in 2011	760	
Dockets Transferred In (+)	14	
Dockets Transferred Out (-)	10	
Cases Available for Processing	905	
Processed By:		
Judge	12	1.5%
Intake Officer	727	91.1%
Hearing Officer	59	7.4%
Other	0	
Cases Processed	798	100.0%
Cases Pending 12/31/2011	107	

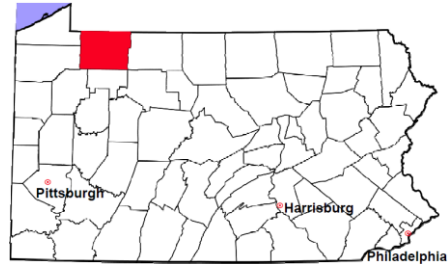


Warren County

2011 Population Estimate: 41,441

Class of County: 6th

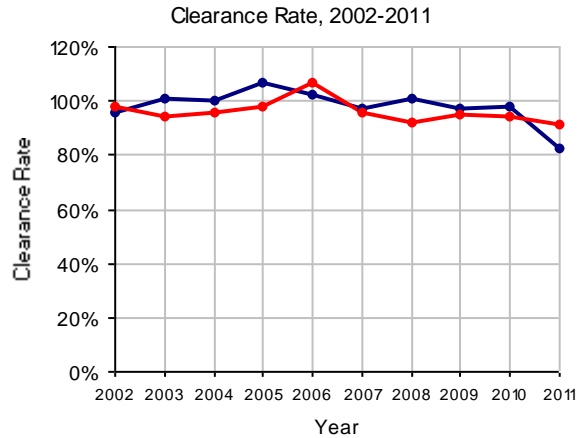
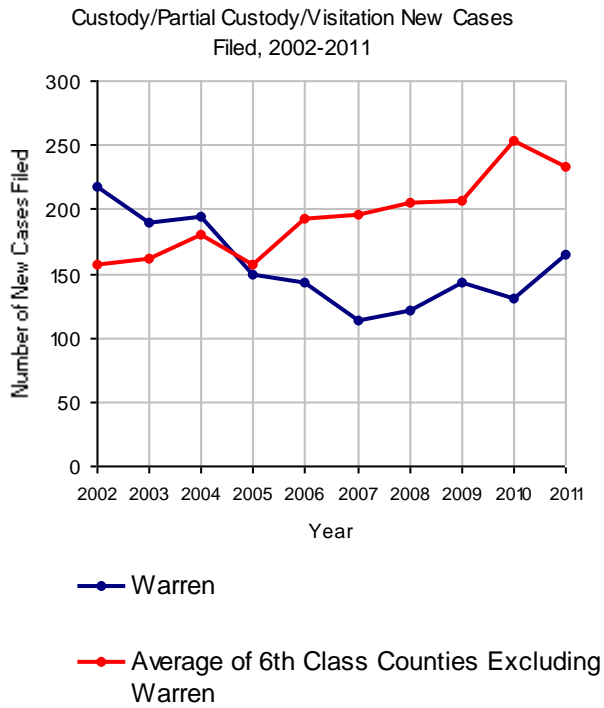
No. of Common Pleas Court Judgeships: 2
(Warren and Forest combined)



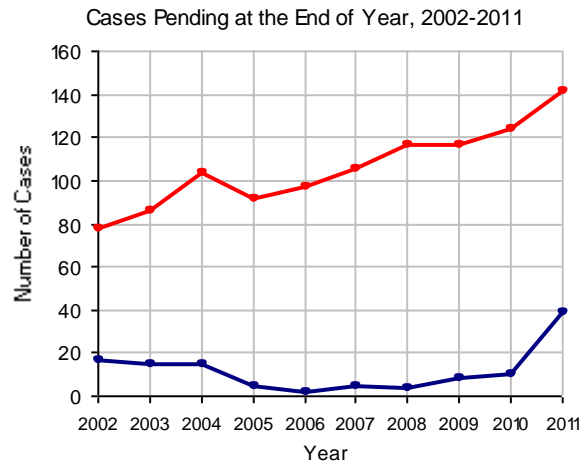
2011 Custody/Partial Custody/Visitation

No. of
Petitions

Cases Pending 1/1/2011	10
New Cases Filed in 2011	165
Cases Available for Processing	175
Processed By:	
Judge	37 27.2%
Non-Judicial Officer	86 63.2%
Other	13 9.6%
Cases Processed	136 100.0%
Cases Pending 12/31/2011	39

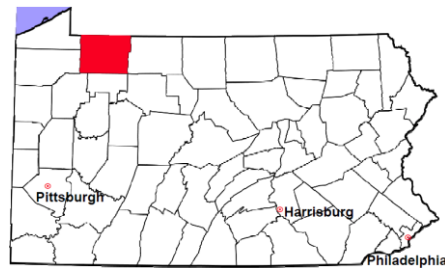


Note: Clearance Rate = Cases Processed / New Cases Filed



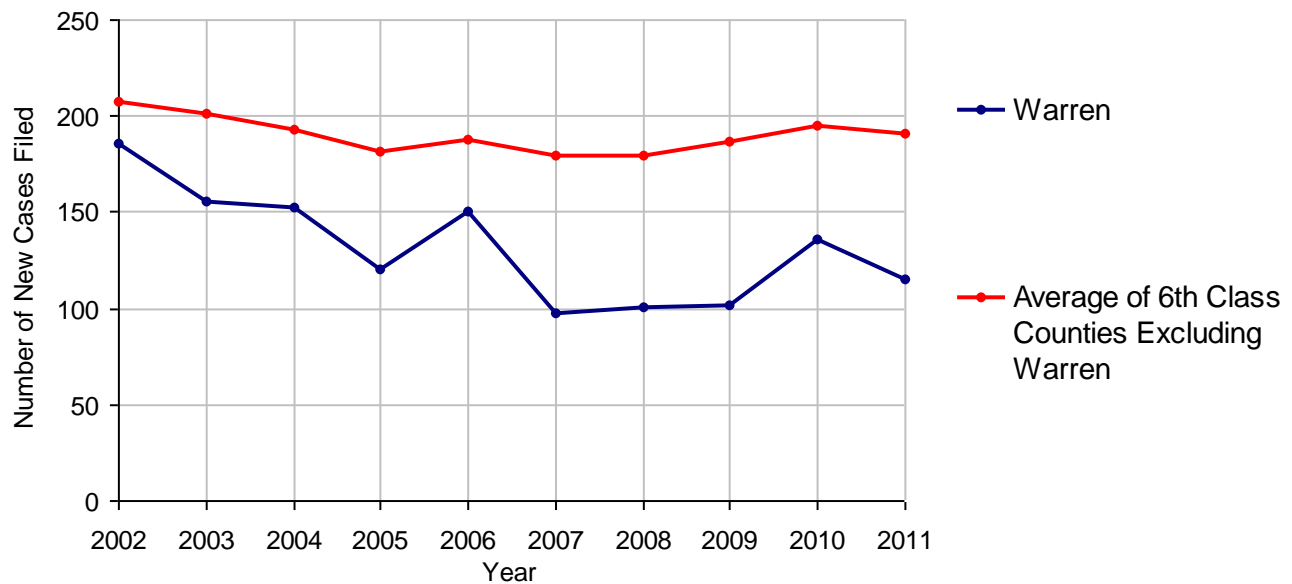
Warren County

2011 Population Estimate: 41,441
 Class of County: 6th
 No. of Common Pleas Court Judgeships: 2
 (Warren and Forest combined)



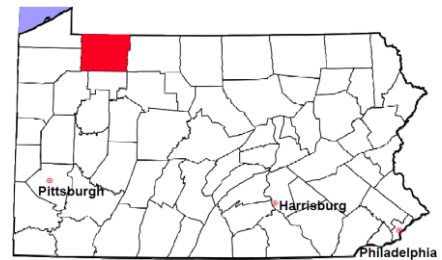
2011 Divorce	No. of Petitions	
Cases Pending 1/1/2011	225	
New Cases Filed in 2011	115	
Cases Available for Processing	340	
Processed By:		
Contested Before a Judge	7	6.7%
Contested Before a Master	0	
Uncontested	96	91.4%
Other	2	1.9%
Cases Processed	105	100.0%
Cases Pending 12/31/2011	235	

Divorce New Cases Filed, 2002-2011



Warren County

2011 Population Estimate: 41,441
 Class of County: 6th
 No. of Common Pleas Court Judgeships: 2
 (Warren and Forest combined)



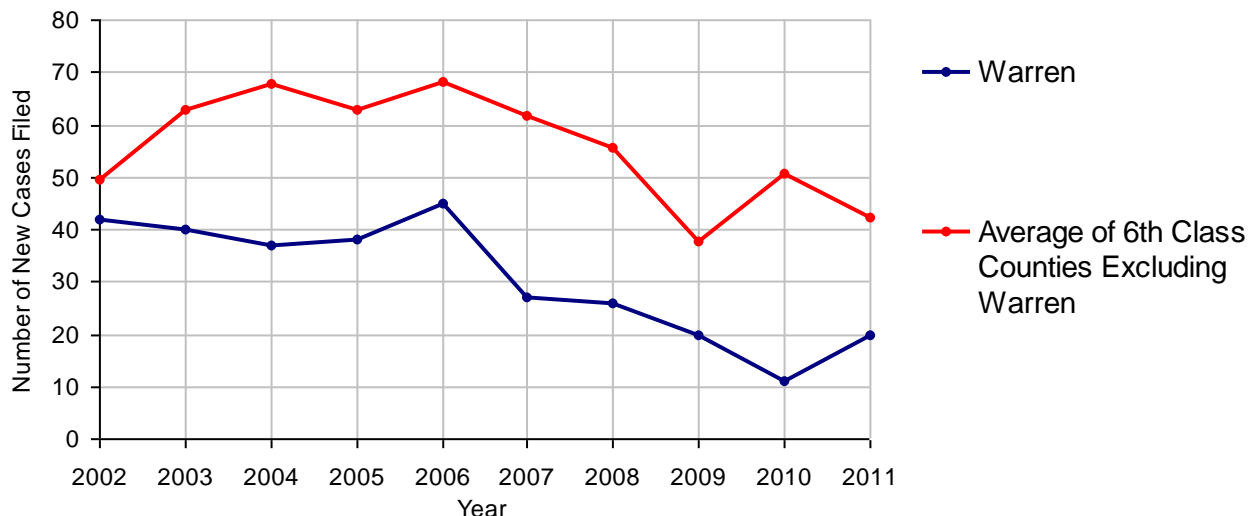
2011 Juvenile Dependency - Active Dependent Inventory



	Abuse/ Neglect	Status Offenses	Total
Cases Pending 1/1/2011	2	0	2
New Petitions Filed in 2011	19	1	20
Other	4	0	4
Total Petitions Available for Processing	25	1	26
Processed by:			
Adjudicated Dependent			
Judge	14	1	15
Master	0	0	0
Adjudicated NOT Dependent			
Judge	3	0	3
Master	0	0	0
Withdrawn/Dismissed/Inactive	0	0	0
Other	6	0	6
Total Petitions Processed	23	1	24
Cases Pending 12/31/2011	2	0	2

Data provided by CPCMS

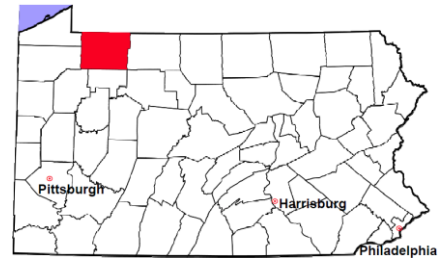
Abuse/Neglect and Status Offenses New Cases Filed, 2002-2011



Note: Dependency data for 2002-2010 were collected manually. Dependency data for 2011 were provided by CPCMS.

Warren County

2011 Population Estimate: 41,441
 Class of County: 6th
 No. of Common Pleas Court Judgeships: 2
 (Warren and Forest combined)



2011 Juvenile Dependency - Adjudicated Dependent Inventory

	Abuse/ Neglect	Status Offenses	Total	
Cases Pending 1/1/2011	28	3	31	
New Adjudicated Dependent Cases	14	1	15	
Other	3	0	3	
Total Adjudicated Dependent Cases	45	4	49	
<u>Court Supervision Terminated:</u>				
Family Reunification	0	0	0	
Adoption	8	0	8	40.0%
Placement with a Relative/Guardian	4	1	5	25.0%
Aged Out	2	0	2	10.0%
Other Permanency Outcomes*	0	1	1	5.0%
Other**	4	0	4	20.0%
Total Adjudicated Dependent Cases Terminated	18	2	20	100.0%
Cases Pending 12/31/2011	27	2	29	

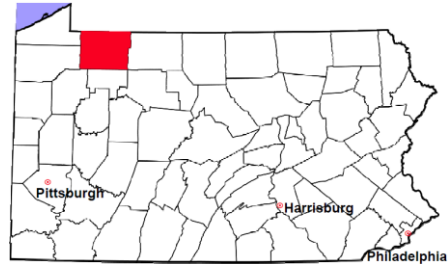
Data provided by CPCMS

* Other Permanency Outcomes include: adjudicated delinquent, death due to natural causes, emancipation, permanent living arrangement, and parent has come forward.

** Other includes cases where Court Supervision is terminated due to transfer out of jurisdiction, withdrawal and administrative closures.

Warren County

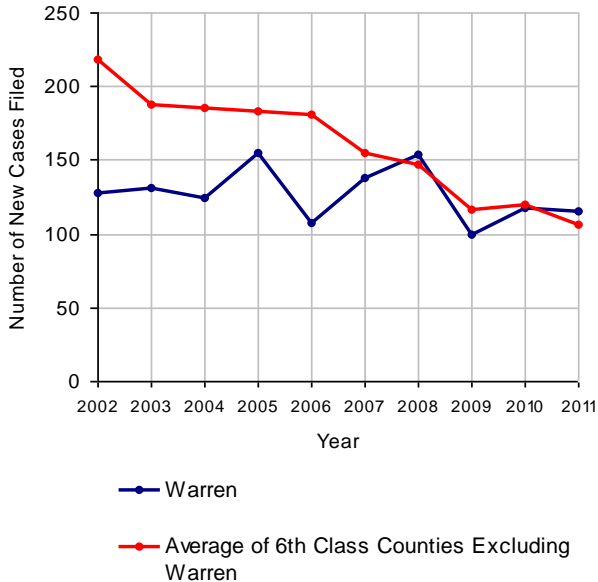
2011 Population Estimate: 41,441
 Class of County: 6th
 No. of Common Pleas Court Judgeships: 2
 (Warren and Forest combined)



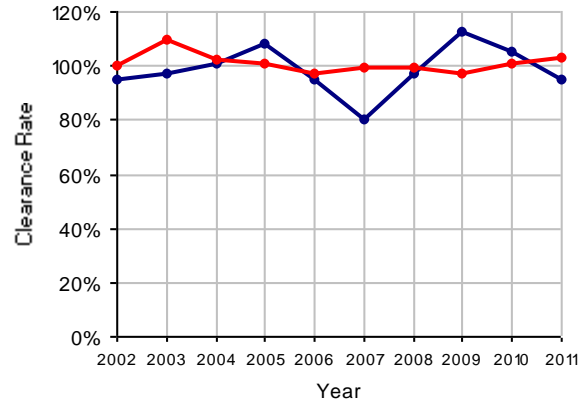
2011 Juvenile Delinquency

	No. of Cases
Cases Pending 1/1/2011	28
New Cases Filed in 2011	115
Cases Available for Processing	143
Processed By:	
Judge	48 44.0%
Non-Judicial Officer	54 49.5%
Other	7 6.4%
Cases Processed	109 100.0%
Cases Pending 12/31/2011	34

Juvenile Delinquency New Cases Filed, 2002-2011

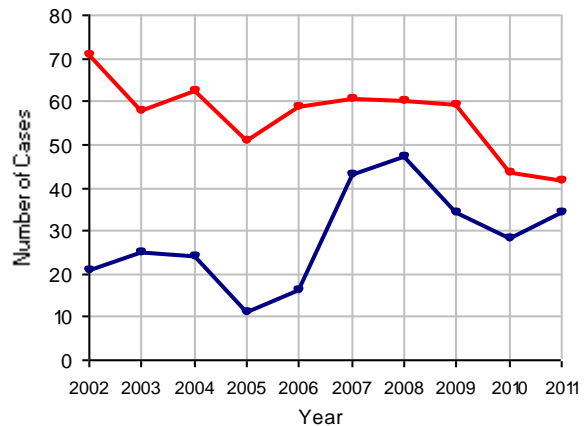


Clearance Rate, 2002-2011



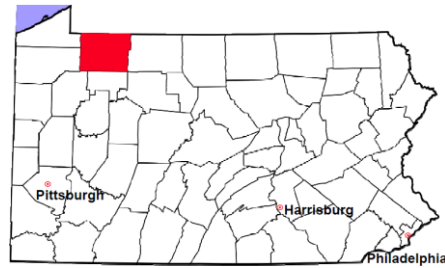
Note: Clearance Rate = Cases Processed / New Cases Filed

Cases Pending at the End of Year, 2002-2011



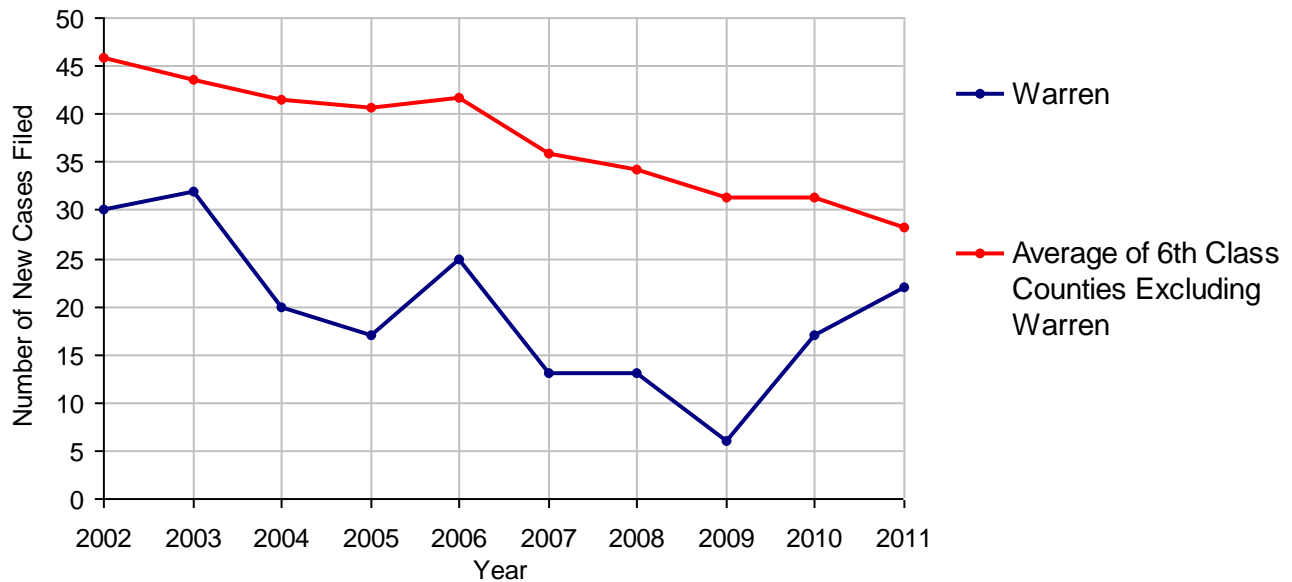
Warren County

2011 Population Estimate: 41,441
 Class of County: 6th
 No. of Common Pleas Court Judgeships: 2
 (Warren and Forest combined)



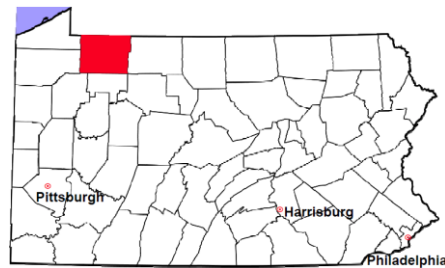
2011 Accounts	No. of Cases	
Cases Pending 1/1/2011	1	
New Cases Filed in 2011	22	
Cases Available for Processing	23	
Processed By:		
Contested before a Judge	0	
Contested before a Non-judicial Officer	0	
Uncontested	21	100.0%
Other	0	
Cases Processed	21	100.0%
Cases Pending 12/31/2011	2	

Accounts New Cases Filed, 2002-2011



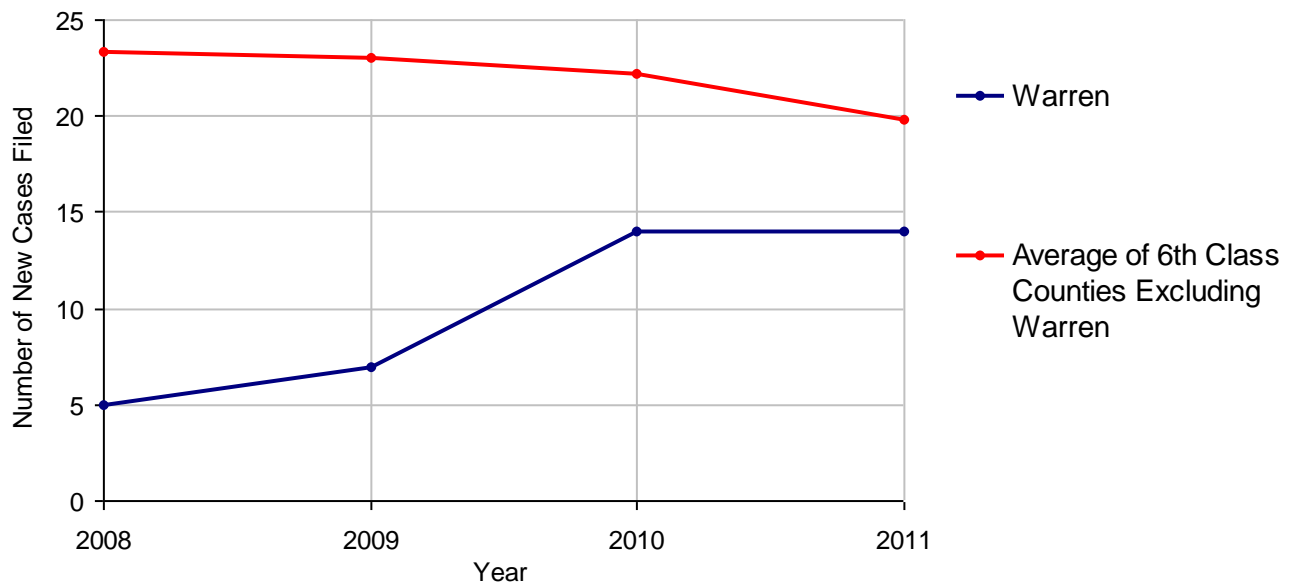
Warren County

2011 Population Estimate: 41,441
 Class of County: 6th
 No. of Common Pleas Court Judgeships: 2
 (Warren and Forest combined)



2011 Adoptions		No. of Cases	
Cases Pending 1/1/2011		4	
New Cases Filed in 2011		14	
Cases Available for Processing		18	
Processed By:			
Contested before a Judge	Granted	1	16.7%
	Denied	0	
Uncontested	Granted	5	83.3%
	Denied	0	
Other		0	
Cases Processed		6 100.0%	
Cases Pending 12/31/2011		12	

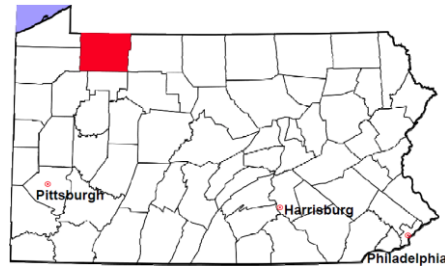
Adoptions New Cases Filed, 2008-2011



Note: Prior to 2008, each petition was counted as one new case, regardless of the number of children listed on the petition. Starting in 2008, each child listed on a petition is counted as a separate case. Therefore, statistics for the years since 2008 should not be compared to those for the years prior to 2008.

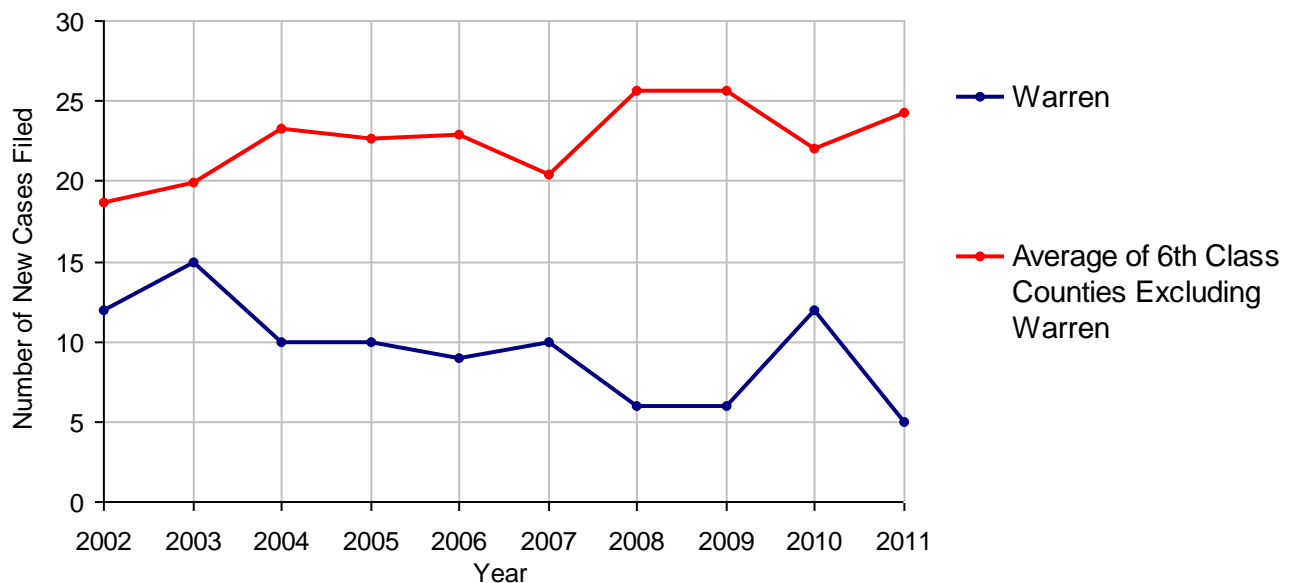
Warren County

2011 Population Estimate: 41,441
 Class of County: 6th
 No. of Common Pleas Court Judgeships: 2
 (Warren and Forest combined)



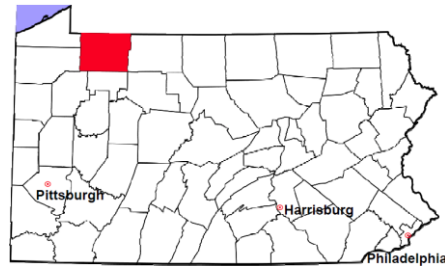
2011 Relinquishments/Terminations	No. of Cases
Cases Pending 1/1/2011	2
New Cases Filed in 2011	5
Cases Available for Processing	7
Processed By:	
Contested before a Judge	0
Uncontested	6 100.0%
Other	0
Cases Processed	6 100.0%
Cases Pending 12/31/2011	1

Relinquishments/Terminations New Cases Filed, 2002-2011



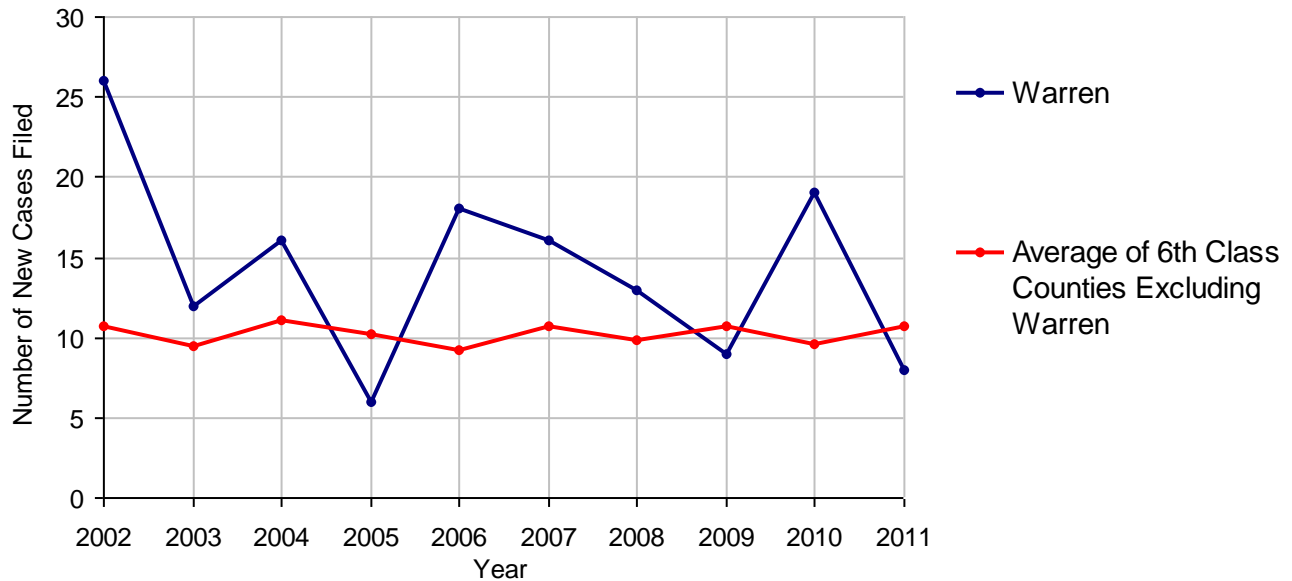
Warren County

2011 Population Estimate: 41,441
 Class of County: 6th
 No. of Common Pleas Court Judgeships: 2
 (Warren and Forest combined)



2011 Appointment of Guardians	No. of Cases
Cases Pending 1/1/2011	10
New Cases Filed in 2011	8
Cases Available for Processing	18
Processed By:	
Contested before a Judge	0
Uncontested	10 100.0%
Other	0
Cases Processed	10 100.0%
Cases Pending 12/31/2011	8

Appointment of Guardians New Cases Filed, 2002-2011

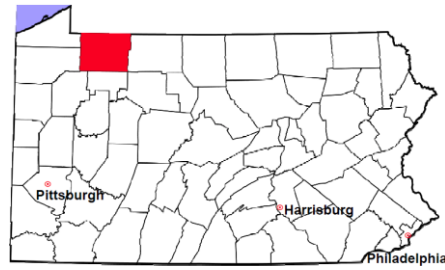


Warren County

2011 Population Estimate: 41,441

Class of County: 6th

No. of Common Pleas Court Judgeships: 2
(Warren and Forest combined)



2011 Jury Activity and Performance Measures

A. Juror Days	611
B. Number Sent to Voir Dire	682
Voir Dire Attendance Rate (B/A * 100)	111.6%
C. Number of Jurors Selected	232
Juror Selection Rate (C/B * 100)	34.0%

Note: In mid-2011, AOPC began utilizing the National Center for State Courts' Jury Managers' Toolbox for collecting jury data. This has resulted in limited jury performance measures being reported for 2011. Additional data will be available in 2012.