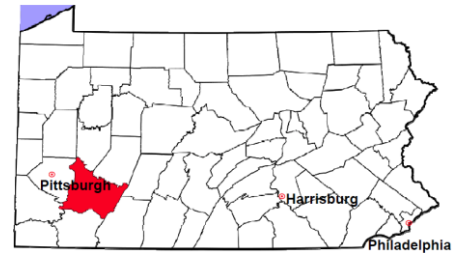


Westmoreland County

2011 Population Estimate: 364,471

Class of County: 3rd

No. of Common Pleas Court Judgeships: 11



2011 Criminal - New Cases by Case Type



Case Type	Felony	Misdemeanor	Summary /Ungraded	Total
Person	282	453	0	735
Property	790	778	6	1,574
Drug	364	540	4	908
Weapon	45	27	0	72
Public Order	96	322	0	418
Motor Vehicle - DWI/DUI	0	1,157	0	1,157
Motor Vehicle - Other	1	28	0	29
Other	0	0	0	0
Total	1,578	3,305	10	4,893
	32.3%	67.5%	0.2%	100.0%

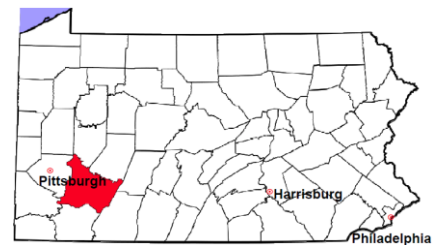
Data provided by CPCMS

Westmoreland County

2011 Population Estimate: 364,471

Class of County: 3rd

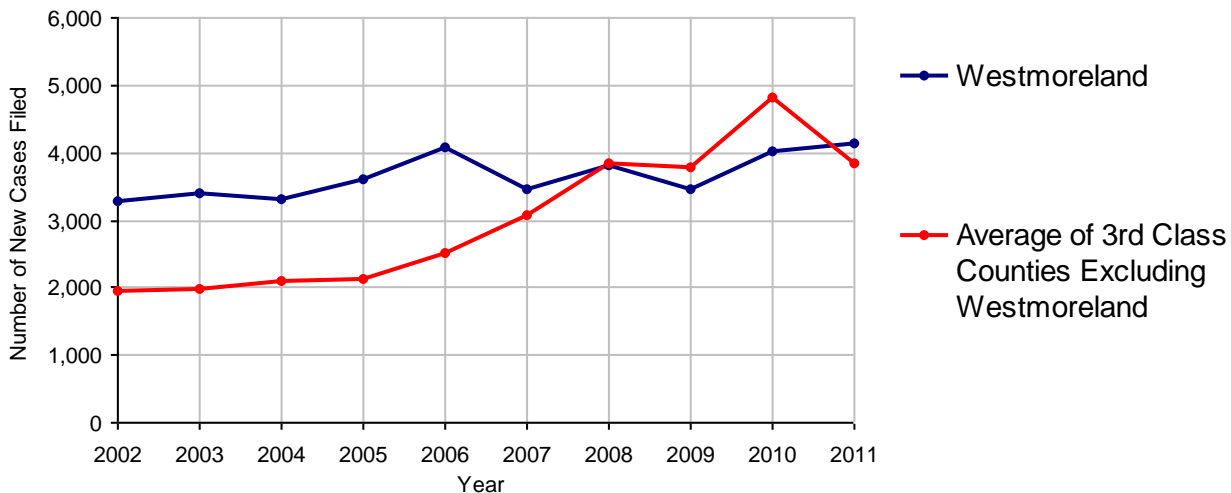
No. of Common Pleas Court Judgeships: 11



2011 Civil	Civil Action	Other	Total
Cases Pending 1/1/2011	1,940	17,122	19,062
Docketed Cases	2,297	1,829	4,126
Arbitration Appeals	3	22	25
Transferred In	6	0	6
Returned to Active	9	10	19
Cases Available for Processing	4,255	18,983	23,238
Disposed By:			
Default Judgments	468	195	663
Cases Decided by Arbitration Board	81	49	130
Dispositive Motions	15	23	38
Settlements	224	315	539
Moved to Inactive Status	89	113	202
Transferred/Withdrawn	35	30	65
Pa.R.J.A. 1901 Administrative Purge	0	0	0
Other	8	16	24
Jury Trial	14	62	76
Non-Jury Trial	6	21	27
Total Cases Disposed	940	824	1,764
Cases Pending 12/31/2011	3,315	18,159	21,474

Age of Pending Cases as of 12/31/2011 (Civil Action Only)		
0-6 months	1,065	32.1%
7-12 months	908	27.4%
13-18 months	1,030	31.1%
19-24 months	29	0.9%
25-30 months	11	0.3%
31-36 months	19	0.6%
37-42 months	7	0.2%
43-48 months	11	0.3%
49-54 months	17	0.5%
55-60 months	16	0.5%
61-66 months	23	0.7%
67-72 months	13	0.4%
Over 72 months	166	5.0%
Total	3,315	100.0%

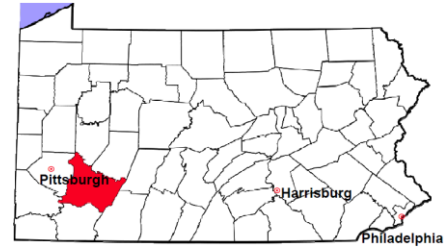
Docketed Cases, 2002-2011



Note: Prior to June 2010, docketed cases under the "Other" category were not reported. The reporting of these cases starting from June 2010 may contribute to an increase in docketed cases from 2009 to 2010.

Westmoreland County

2011 Population Estimate: 364,471
 Class of County: 3rd
 No. of Common Pleas Court Judgeships: 11



2011 Civil - Docketed Cases Listed by Case Type

TORT (does not include mass tort)

Intentional	15
Malicious Prosecution	2
Motor Vehicle	310
Nuisance	2
Premise Liability	97
Product Liability	5
Slander/Libel/Defamation	3
Other	92

MASS TORT

Asbestos	11
Tobacco	0
Toxic Tort - DES	0
Toxic Tort - Implant	0
Toxic Waste	0
Other	1

PROFESSIONAL LIABILITY

Dental	0
Legal	0
Medical Malpractice	107
Other	6

CONTRACT

(does not include judgments)

Buyer Plaintiff	24
Debt Collection:	
Credit Card	1,037
Other	432
Employment Dispute:	
Discrimination	8
Other	0
Other	123

REAL PROPERTY

Ejectment*	98
Eminent Domain/ Condemnation*	171
Ground Rent	0
Landlord/Tenant Dispute	22
Mortgage Forclosures:	
Residential*	596
Commercial*	14
Partition of Real Property*	8
Quiet Title*	26
Other*	276

CIVIL APPEALS

Administrative Agencies

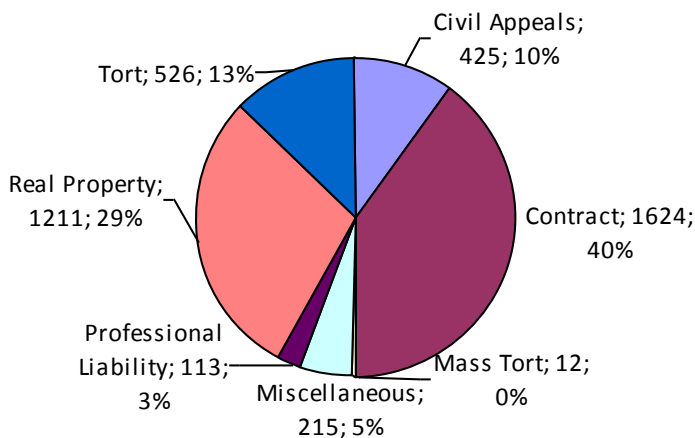
Board of Assessment*	20
Board of Elections*	2
Dept. of Transportation*	151
Zoning Board*	0
Statutory Appeal - Other*	215
Other*	37

MISCELLANEOUS

Common Law/ Statutory Arbitration*	13
Declaratory Judgment*	12
Mandamus*	2
Non-Domestic Relations Restraining Order*	1
Quo Warranto*	0
Replevin*	23
Other*	164

TOTAL DOCKETED CASES:
4,126

* Civil Other



Of the Docketed Cases:

Pro Se Filings:	202	4.9%
Class Action Suits:	1	<0.1%
MDJ Appeals:	392	9.5%

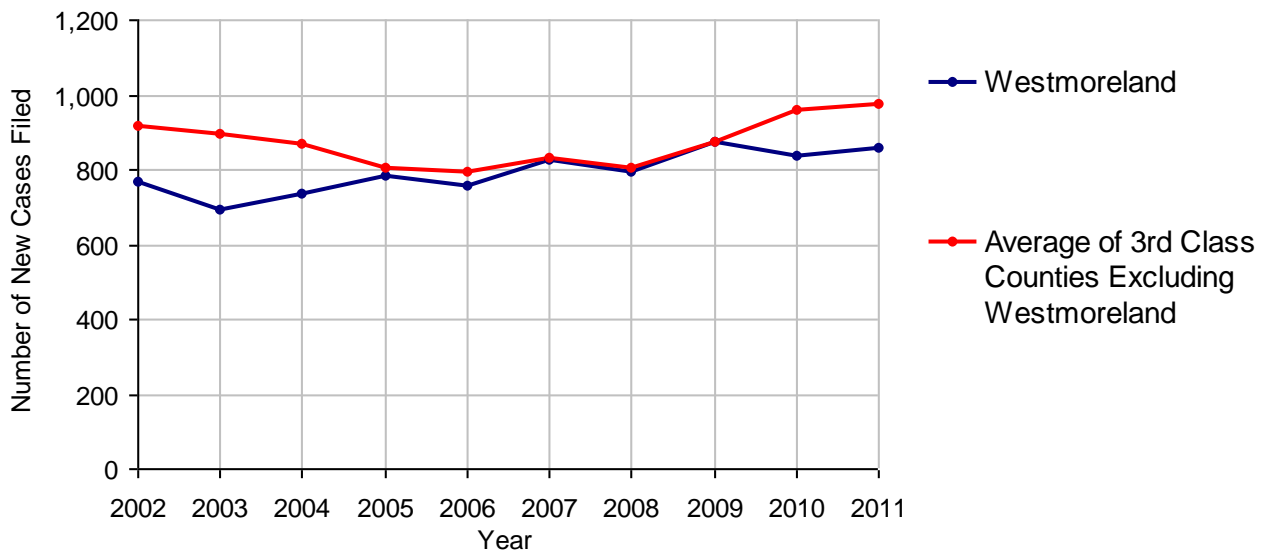
Westmoreland County

2011 Population Estimate: 364,471
 Class of County: 3rd
 No. of Common Pleas Court Judgeships: 11



2011 Protection From Abuse	No. of Petitions
Cases Pending 1/1/2011	158
New Cases Filed in 2011	860
<i>Of these, Petitions Requesting Temporary Orders: 860 (100.0%)</i>	
<i>Temporary Orders DENIED: 12 (1.4%), Temporary Orders GRANTED: 848 (98.6%)</i>	
Cases Available for Processing	1,018
Processed By:	
Temporary Order DENIED After Ex Parte Hearing and No Evidentiary Hearing Scheduled	12 1.2%
Temporary Order DISMISSED After Evidentiary Hearing and No Final Order Entered	220 22.5%
Final Order DENIED After Evidentiary Hearing Before a Judge	56 5.7%
Final Order GRANTED After Evidentiary Hearing Before a Judge	163 16.7%
Plaintiff Did Not Appear For Evidentiary Hearing	89 9.1%
Final Order by STIPULATION OR AGREEMENT Between the Parties	190 19.4%
Petition WITHDRAWN by Plaintiff	205 21.0%
TRANSFERRED to Another Jurisdiction	0
DECEASED Party	1 0.1%
Other	42 4.3%
Cases Processed	978 100.0%
Cases Pending 12/31/2011	40

PFA New Cases Filed, 2002-2011

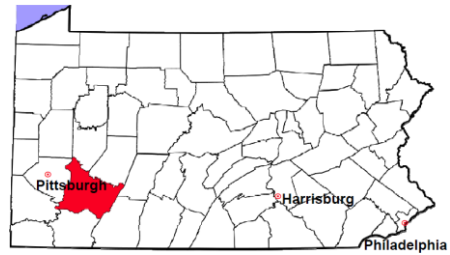


Westmoreland County

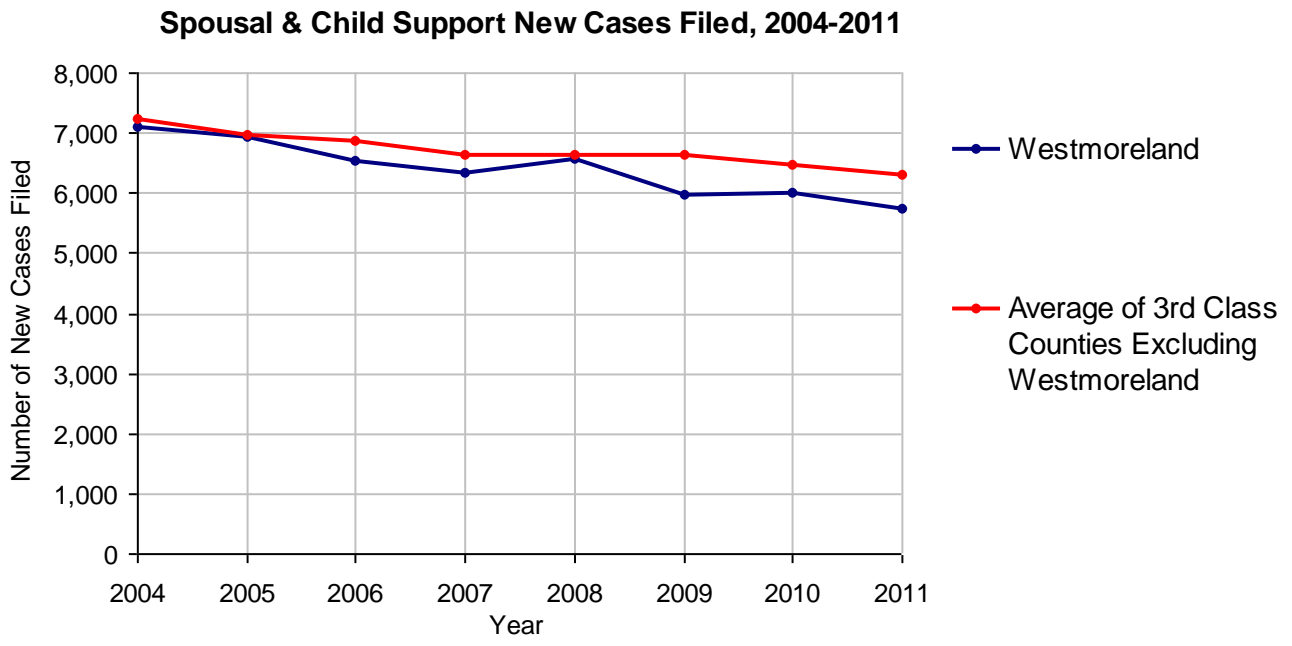
2011 Population Estimate: 364,471

Class of County: 3rd

No. of Common Pleas Court Judgeships: 11



2011 Spousal & Child Support	No. of Petitions	
Cases Pending 1/1/2011	1,067	
New Cases Filed in 2011	5,750	
Dockets Transferred In (+)	67	
Dockets Transferred Out (-)	37	
Cases Available for Processing	6,847	
Processed By:		
Judge	48	0.8%
Intake Officer	5,540	96.1%
Hearing Officer	176	3.1%
Other	1	<0.1%
Cases Processed	5,765	100.0%
Cases Pending 12/31/2011	1,082	

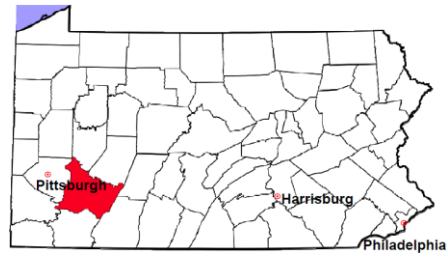


Westmoreland County

2011 Population Estimate: 364,471

Class of County: 3rd

No. of Common Pleas Court Judgeships: 11



2011 Custody/Partial Custody/Visitation

No. of
Petitions

Cases Pending 1/1/2011

682

New Cases Filed in 2011

1,243

Cases Available for Processing

1,925

Processed By:

Judge

345

29.2%

Non-Judicial Officer

576

48.8%

Other

259

21.9%

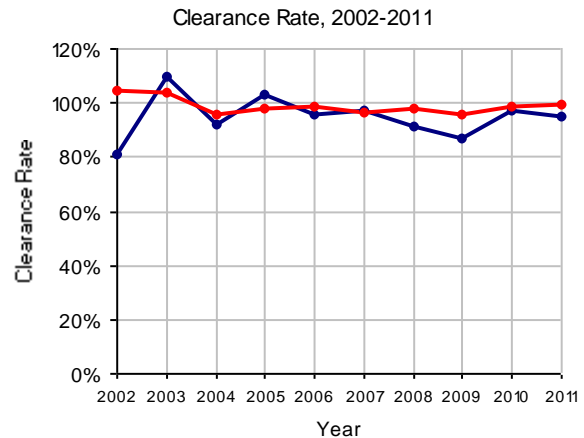
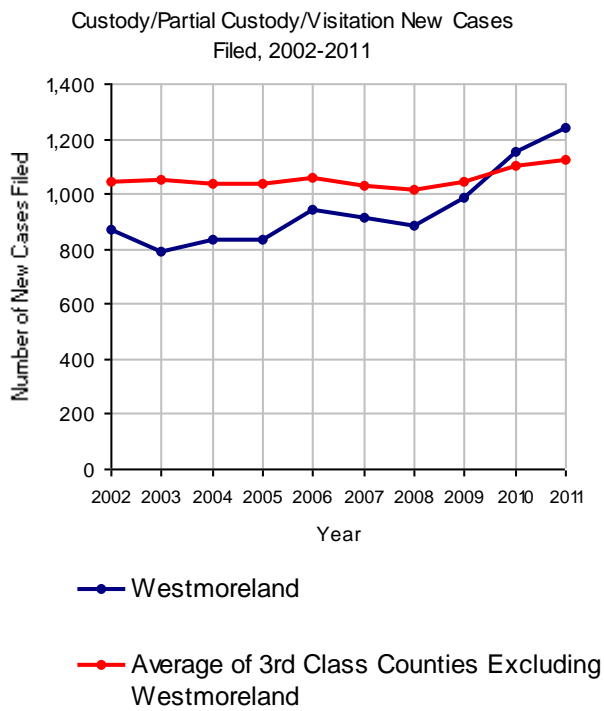
Cases Processed

1,180

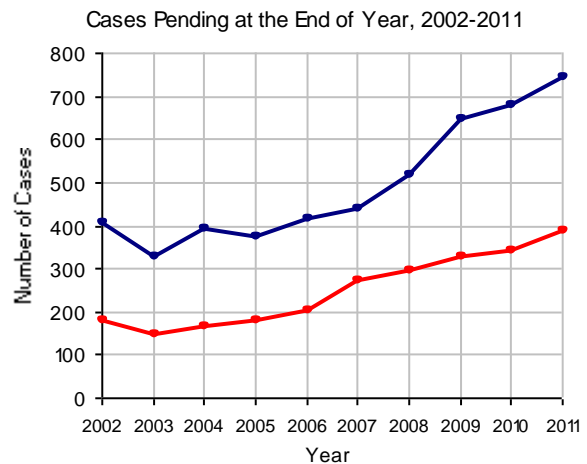
100.0%

Cases Pending 12/31/2011

745

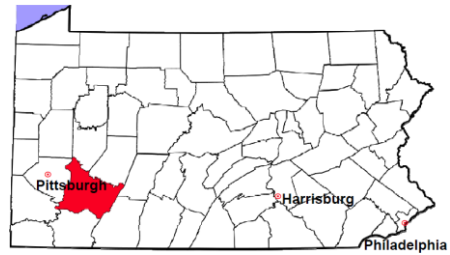


Note: Clearance Rate = Cases Processed / New Cases Filed



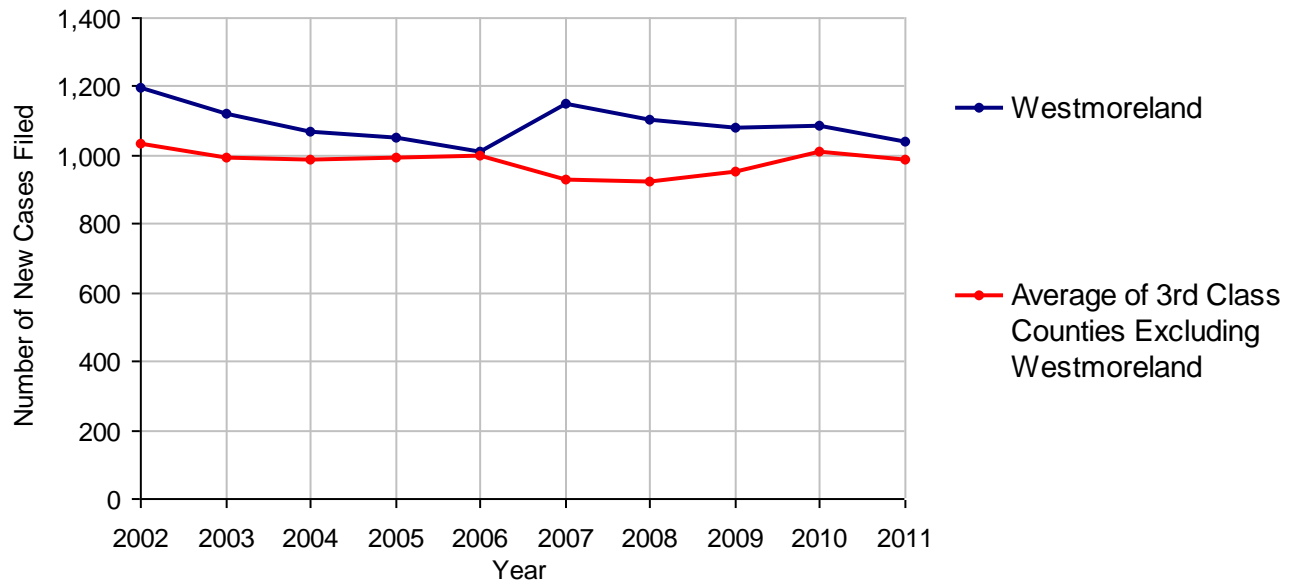
Westmoreland County

2011 Population Estimate: 364,471
 Class of County: 3rd
 No. of Common Pleas Court Judgeships: 11



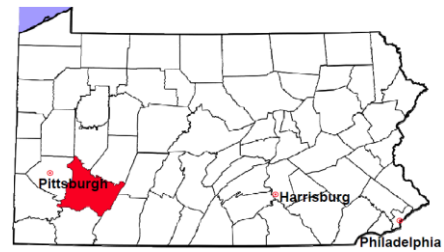
2011 Divorce	No. of Petitions	
Cases Pending 1/1/2011	3,433	
New Cases Filed in 2011	1,041	
Cases Available for Processing	4,474	
Processed By:		
Contested Before a Judge	7	0.4%
Contested Before a Master	97	5.3%
Uncontested	822	44.9%
Other	904	49.4%
Cases Processed	1,830	100.0%
Cases Pending 12/31/2011	2,644	

Divorce New Cases Filed, 2002-2011



Westmoreland County

2011 Population Estimate: 364,471
 Class of County: 3rd
 No. of Common Pleas Court Judgeships: 11



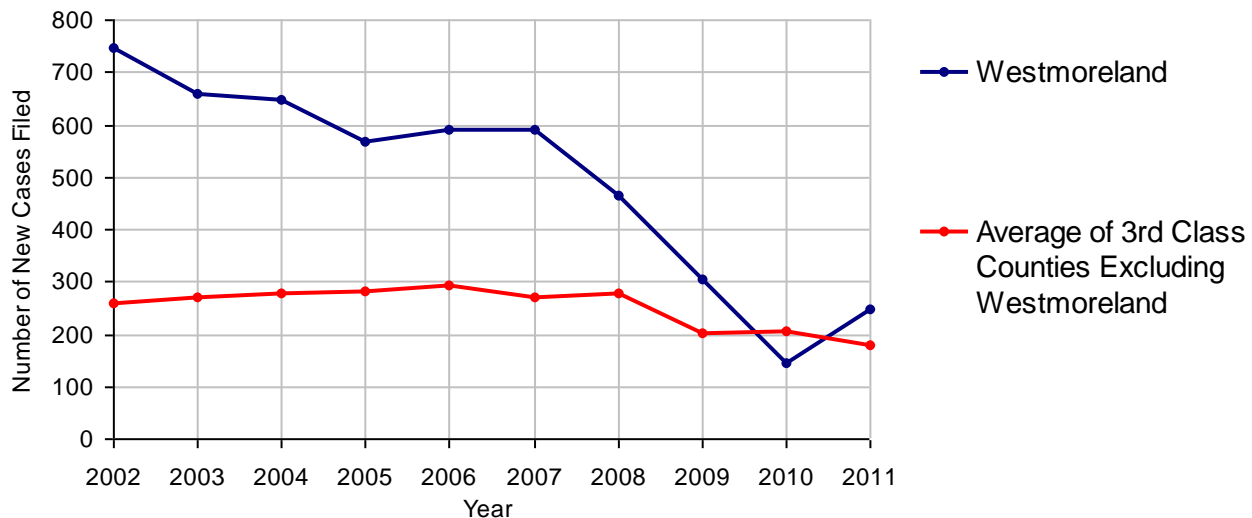
2011 Juvenile Dependency - Active Dependent Inventory



	Abuse/ Neglect	Status Offenses	Total
Cases Pending 1/1/2011	10	0	10
New Petitions Filed in 2011	194	55	249
Other	5	1	6
Total Petitions Available for Processing	209	56	265
Processed by:			
Adjudicated Dependent			
Judge	11	0	11
Master	133	39	172
Adjudicated NOT Dependent			
Judge	1	0	1
Master	0	0	0
Withdrawn/Dismissed/Inactive	10	1	11
Other	24	6	30
Total Petitions Processed	179	46	225
Cases Pending 12/31/2011	30	10	40

Data provided by CPCMS

Abuse/Neglect and Status Offenses New Cases Filed, 2002-2011



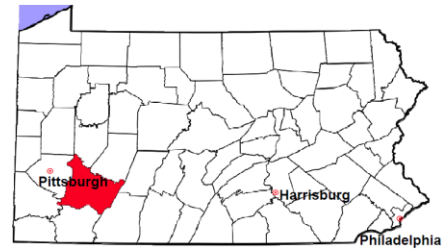
Note: Dependency data for 2002-2010 were collected manually. Dependency data for 2011 were provided by CPCMS.

Westmoreland County

2011 Population Estimate: 364,471

Class of County: 3rd

No. of Common Pleas Court Judgeships: 11



2011 Juvenile Dependency - Adjudicated Dependent Inventory

	Abuse/ Neglect	Status Offenses	Total	
Cases Pending 1/1/2011	204	19	223	
New Adjudicated Dependent Cases	144	39	183	
Other	5	2	7	
Total Adjudicated Dependent Cases	353	60	413	
<u>Court Supervision Terminated:</u>				
Family Reunification	21	15	36	22.5%
Adoption	45	0	45	28.1%
Placement with a Relative/Guardian	48	3	51	31.9%
Aged Out	14	1	15	9.4%
Other Permanency Outcomes*	4	3	7	4.4%
Other**	5	1	6	3.8%
Total Adjudicated Dependent Cases Terminated	137	23	160	100.0%
Cases Pending 12/31/2011	216	37	253	

Data provided by CPCMS

* Other Permanency Outcomes include: adjudicated delinquent, death due to natural causes, emancipation, permanent living arrangement, and parent has come forward.

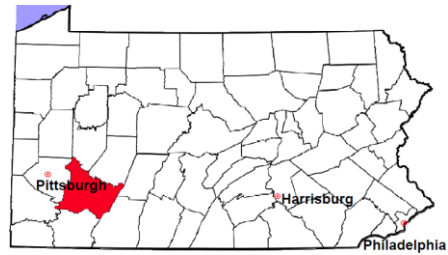
** Other includes cases where Court Supervision is terminated due to transfer out of jurisdiction, withdrawal and administrative closures.

Westmoreland County

2011 Population Estimate: 364,471

Class of County: 3rd

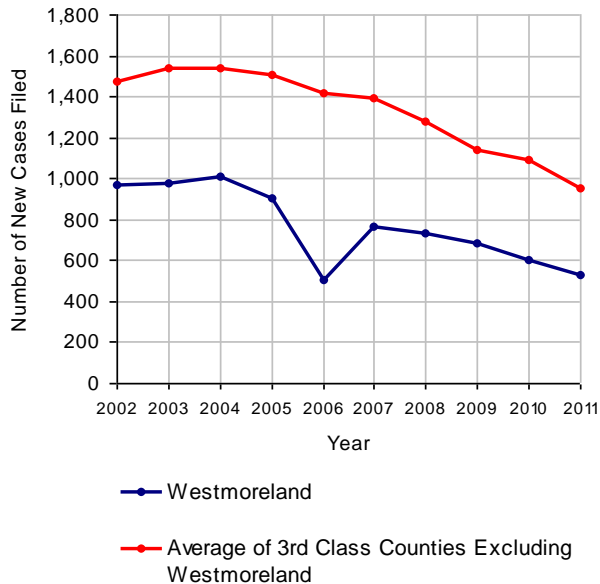
No. of Common Pleas Court Judgeships: 11



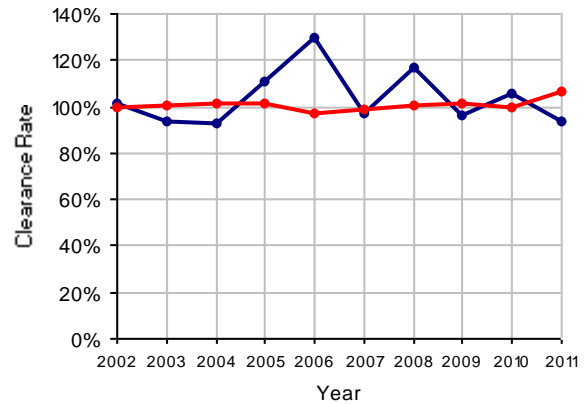
2011 Juvenile Delinquency

	No. of Cases
Cases Pending 1/1/2011	91
New Cases Filed in 2011	532
Cases Available for Processing	623
Processed By:	
Judge	174 34.9%
Non-Judicial Officer	293 58.8%
Other	31 6.2%
Cases Processed	498 100.0%
Cases Pending 12/31/2011	125

Juvenile Delinquency New Cases Filed, 2002-2011

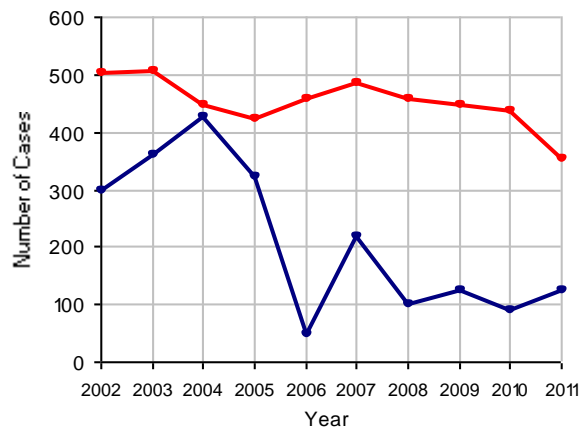


Clearance Rate, 2002-2011



Note: Clearance Rate = Cases Processed / New Cases Filed

Cases Pending at the End of Year, 2002-2011

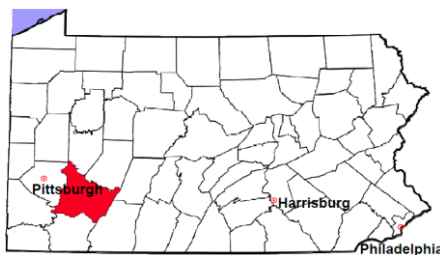


Westmoreland County

2011 Population Estimate: 364,471

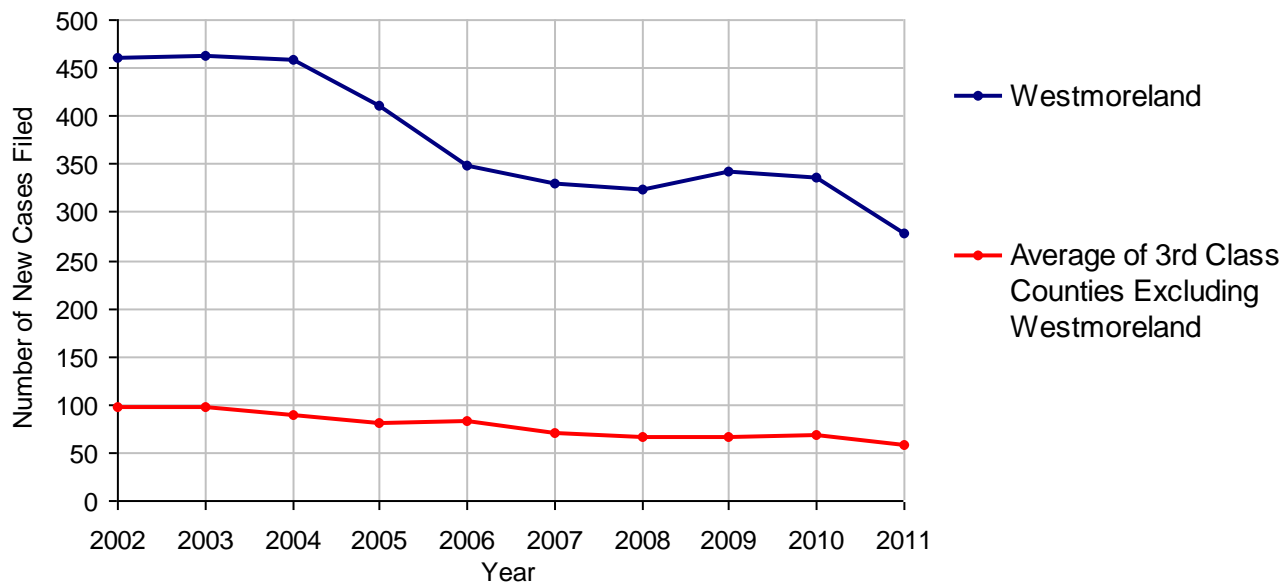
Class of County: 3rd

No. of Common Pleas Court Judgeships: 11



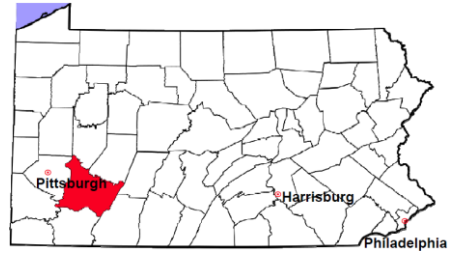
2011 Accounts	No. of Cases	
Cases Pending 1/1/2011	101	
New Cases Filed in 2011	278	
Cases Available for Processing	379	
Processed By:		
Contested before a Judge	5	1.9%
Contested before a Non-judicial Officer	0	
Uncontested	255	96.2%
Other	5	1.9%
Cases Processed	265	100.0%
Cases Pending 12/31/2011	114	

Accounts New Cases Filed, 2002-2011



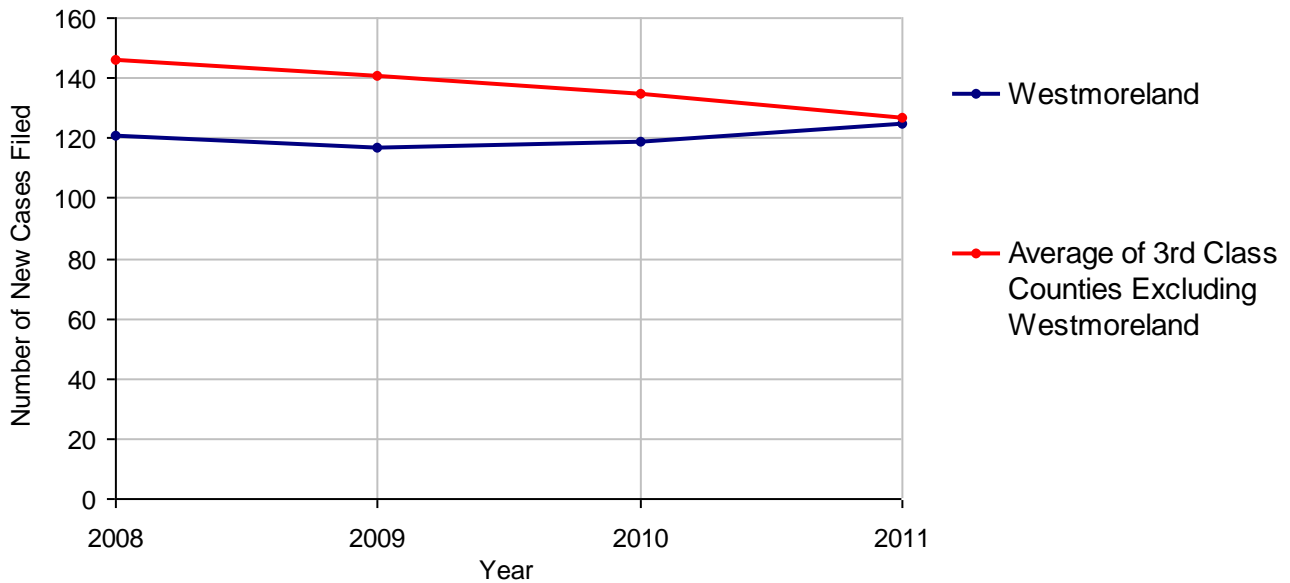
Westmoreland County

2011 Population Estimate: 364,471
 Class of County: 3rd
 No. of Common Pleas Court Judgeships: 11



2011 Adoptions		No. of Cases	
Cases Pending 1/1/2011		21	
New Cases Filed in 2011		125	
Cases Available for Processing		146	
Processed By:			
Contested before a Judge	Granted	0	
	Denied	0	
Uncontested	Granted	139	99.3%
	Denied	0	
Other		1	0.7%
Cases Processed		140	100.0%
Cases Pending 12/31/2011		6	

Adoptions New Cases Filed, 2008-2011



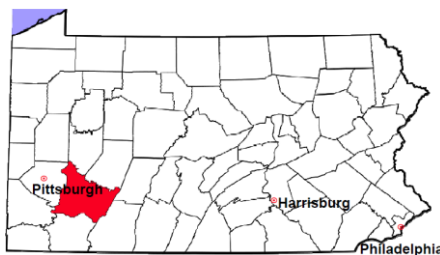
Note: Prior to 2008, each petition was counted as one new case, regardless of the number of children listed on the petition. Starting in 2008, each child listed on a petition is counted as a separate case. Therefore, statistics for the years since 2008 should not be compared to those for the years prior to 2008.

Westmoreland County

2011 Population Estimate: 364,471

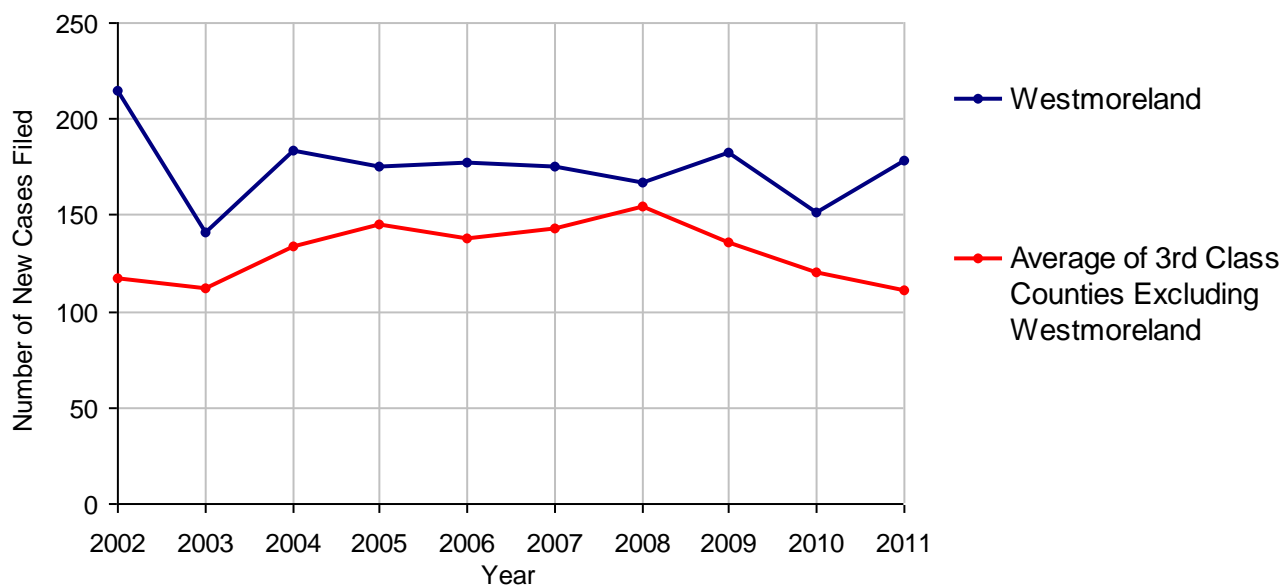
Class of County: 3rd

No. of Common Pleas Court Judgeships: 11



2011 Relinquishments/Terminations	No. of Cases	
Cases Pending 1/1/2011	59	
New Cases Filed in 2011	178	
Cases Available for Processing	237	
Processed By:		
Contested before a Judge	32	17.0%
Uncontested	148	78.7%
Other	8	4.3%
Cases Processed	188	100.0%
Cases Pending 12/31/2011	49	

Relinquishments/Terminations New Cases Filed, 2002-2011

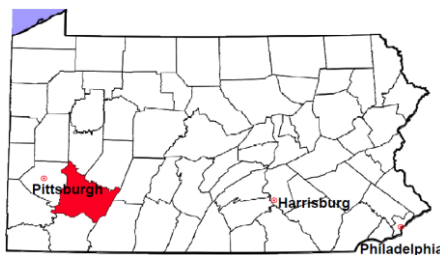


Westmoreland County

2011 Population Estimate: 364,471

Class of County: 3rd

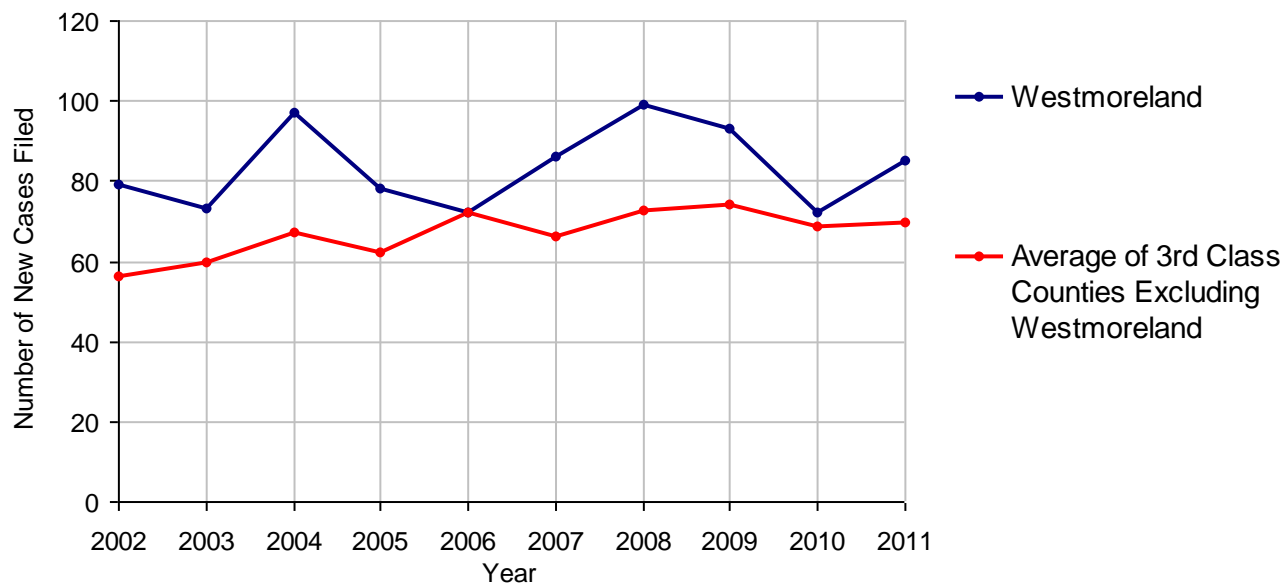
No. of Common Pleas Court Judgeships: 11



2011 Appointment of Guardians

	No. of Cases	
Cases Pending 1/1/2011	80	
New Cases Filed in 2011	85	
Cases Available for Processing	165	
Processed By:		
Contested before a Judge	0	
Uncontested	64	78.0%
Other	18	22.0%
Cases Processed	82	100.0%
Cases Pending 12/31/2011	83	

Appointment of Guardians New Cases Filed, 2002-2011

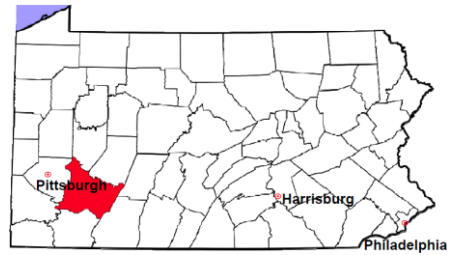


Westmoreland County

2011 Population Estimate: 364,471

Class of County: 3rd

No. of Common Pleas Court Judgeships: 11



2011 Jury Activity and Performance Measures

A. Juror Days	4,679
B. Number Sent to Voir Dire	2,675
Voir Dire Attendance Rate (B/A * 100)	57.2%
C. Number of Jurors Selected	833
Juror Selection Rate (C/B * 100)	31.1%

Note: In mid-2011, AOPC began utilizing the National Center for State Courts' Jury Managers' Toolbox for collecting jury data. This has resulted in limited jury performance measures being reported for 2011. Additional data will be available in 2012.