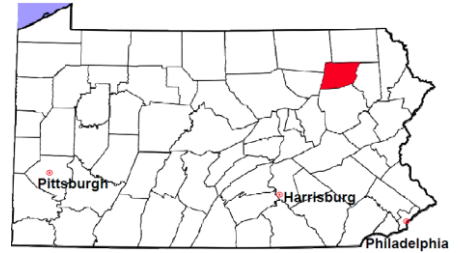


Wyoming County

2011 Population Estimate: 28,406
 Class of County: 7th
 No. of Common Pleas Court Judgeships: 1
 (Wyoming and Sullivan combined)



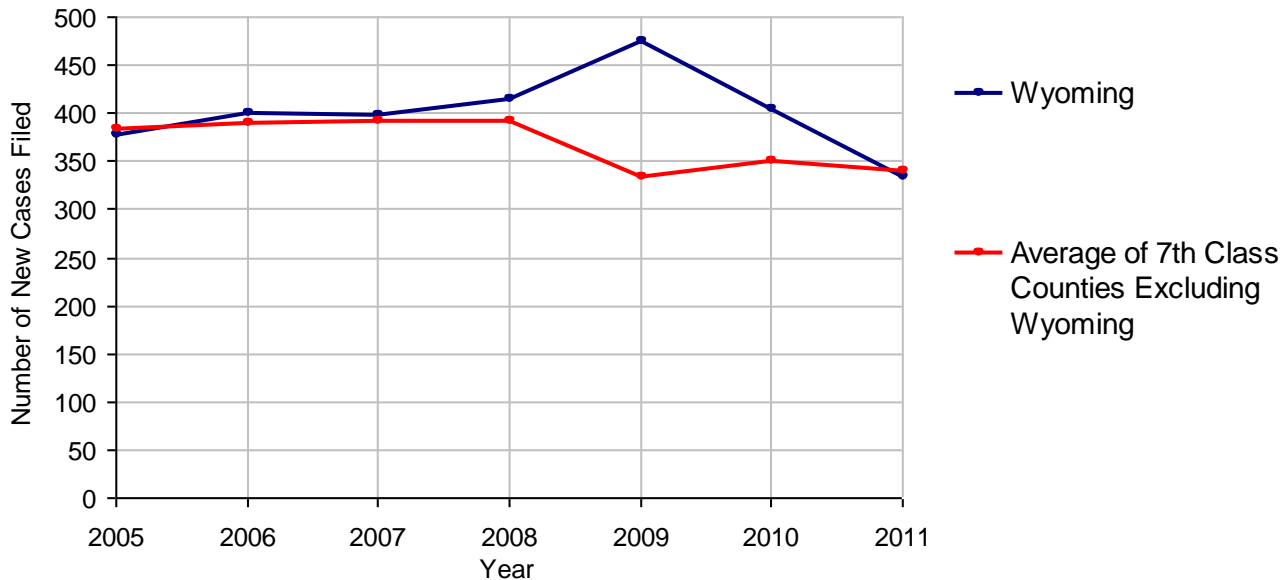
2011 Criminal No. of Cases

Cases Pending 1/1/2011	218	
New Cases Filed in 2011	335	
Reopened Cases	17	
Cases Available for Disposition	570	
Disposed by:		
Withdrawn/Dismissed	30	8.1%
ARD	81	21.8%
Guilty Plea	239	64.4%
Non-Jury Trial	1	0.3%
Jury Trial	4	1.1%
Inactive	4	1.1%
Other	12	3.2%
Total Cases Disposed	371	100.0%
Cases Pending 12/31/2011	199	
Cases Awaiting Sentencing	37	

Age of Pending Cases as of 12/31/2011		
0-60 Days	63	31.7%
61-120 Days	43	21.6%
121-180 Days	26	13.1%
181-240 Days	10	5.0%
241-300 Days	11	5.5%
301-360 Days	6	3.0%
Over 360 Days	40	20.1%
Total	199	100.0%

Data provided by CPCMS

Criminal New Cases Filed, 2005-2011

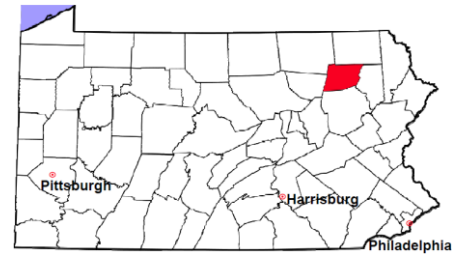


Wyoming County

2011 Population Estimate: 28,406

Class of County: 7th

No. of Common Pleas Court Judgeships: 1
(Wyoming and Sullivan combined)



2011 Criminal - New Cases by Case Type



Case Type	Felony	Misdemeanor	Summary /Ungraded	Total
Person	14	37	0	51
Property	56	39	0	95
Drug	4	13	0	17
Weapon	3	0	0	3
Public Order	21	26	0	47
Motor Vehicle - DWI/DUI	0	121	0	121
Motor Vehicle - Other	0	1	0	1
Other	0	0	0	0
Total	98	237	0	335
	29.3%	70.7%		100.0%

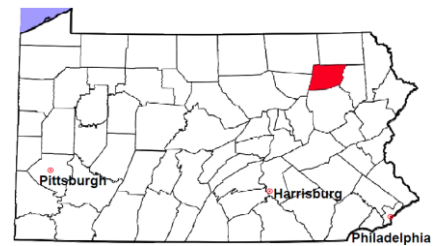
Data provided by CPCMS

Wyoming County

2011 Population Estimate: 28,406

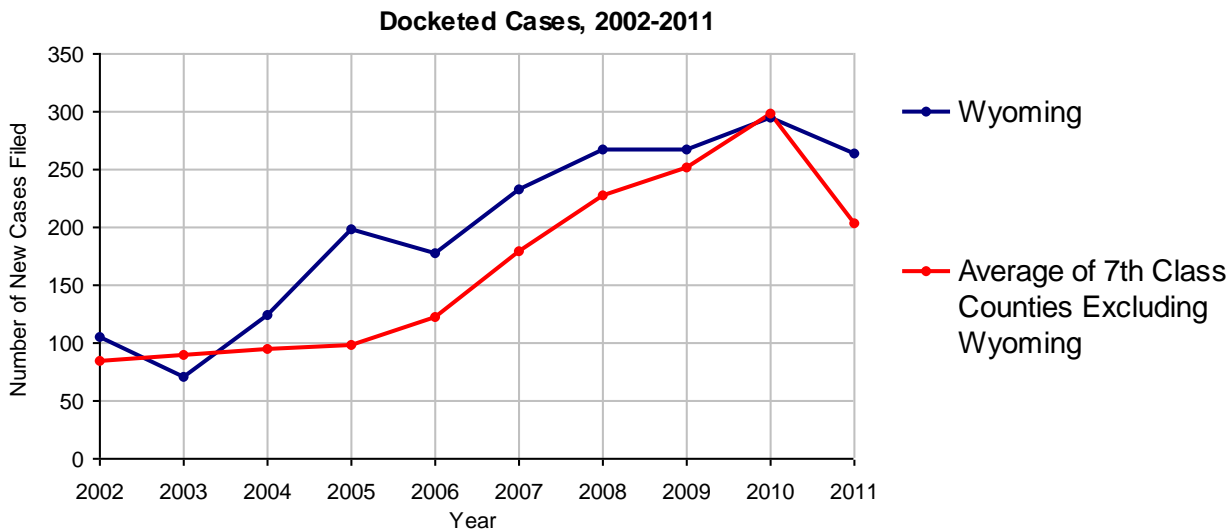
Class of County: 7th

No. of Common Pleas Court Judgeships: 1
(Wyoming and Sullivan combined)



2011 Civil	Civil Action	Other	Total
Cases Pending 1/1/2011	127	50	177
Docketed Cases	166	97	263
Arbitration Appeals	0	0	0
Transferred In	0	0	0
Returned to Active	11	0	11
Cases Available for Processing	304	147	451
Disposed By:			
Default Judgments	0	0	0
Cases Decided by Arbitration Board	0	0	0
Dispositive Motions	54	9	63
Settlements	19	4	23
Moved to Inactive Status	0	0	0
Transferred/Withdrawn	3	3	6
Pa.R.J.A. 1901 Administrative Purge	0	0	0
Other	0	0	0
Jury Trial	1	0	1
Non-Jury Trial	2	0	2
Total Cases Disposed	79	16	95
Cases Pending 12/31/2011	225	131	356

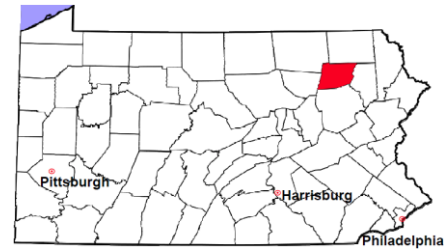
Age of Pending Cases as of 12/31/2011 (Civil Action Only)		
0-6 months	62	27.6%
7-12 months	72	32.0%
13-18 months	90	40.0%
19-24 months	1	0.4%
25-30 months	0	
31-36 months	0	
37-42 months	0	
43-48 months	0	
49-54 months	0	
55-60 months	0	
61-66 months	0	
67-72 months	0	
Over 72 months	0	
Total	225	100.0%



Note: Prior to June 2010, docketed cases under the "Other" category were not reported. The reporting of these cases starting from June 2010 may contribute to an increase in docketed cases from 2009 to 2010.

Wyoming County

2011 Population Estimate: 28,406
 Class of County: 7th
 No. of Common Pleas Court Judgeships: 1
 (Wyoming and Sullivan combined)



2011 Civil - Docketed Cases Listed by Case Type

TORT (does not include mass tort)

Intentional	0
Malicious Prosecution	1
Motor Vehicle	21
Nuisance	0
Premise Liability	1
Product Liability	1
Slander/Libel/Defamation	1
Other	4

MASS TORT

Asbestos	0
Tobacco	0
Toxic Tort - DES	0
Toxic Tort - Implant	0
Toxic Waste	0
Other	0

PROFESSIONAL LIABILITY

Dental	0
Legal	0
Medical Malpractice	0
Other	0

CONTRACT

(does not include judgments)

Buyer Plaintiff	0
Debt Collection:	
Credit Card	113
Other	16
Employment Dispute:	
Discrimination	1
Other	6

REAL PROPERTY

Ejectment*	12
Eminent Domain/ Condemnation*	3
Ground Rent	0
Landlord/Tenant Dispute	1
Mortgage Forclosures:	
Residential*	47
Commercial*	1
Partition of Real Property*	1
Quiet Title*	6
Other*	1

CIVIL APPEALS

Administrative Agencies

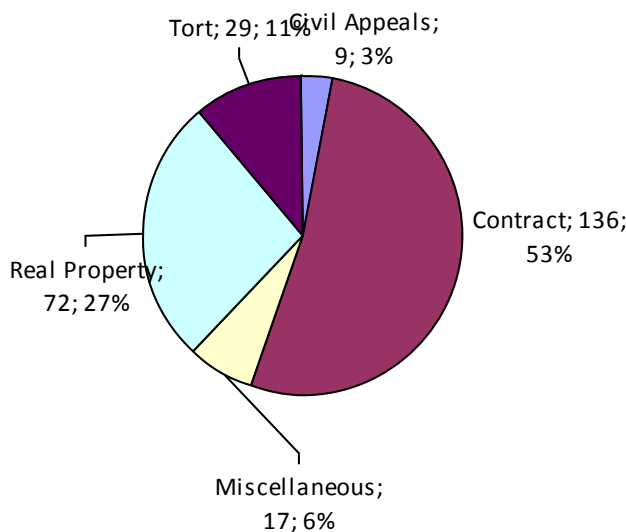
Board of Assessment*	1
Board of Elections*	0
Dept. of Transportation*	5
Zoning Board*	0
Statutory Appeal - Other*	0
Other*	3

MISCELLANEOUS

Common Law/ Statutory Arbitration*	0
Declaratory Judgment*	4
Mandamus*	0
Non-Domestic Relations Restraining Order*	0
Quo Warranto*	0
Replevin*	2
Other*	11

TOTAL DOCKETED CASES: 263

* Civil Other



Of the Docketed Cases:

Pro Se Filings:	4	1.5%
Class Action Suits:	0	
MDJ Appeals:	5	1.9%

Wyoming County



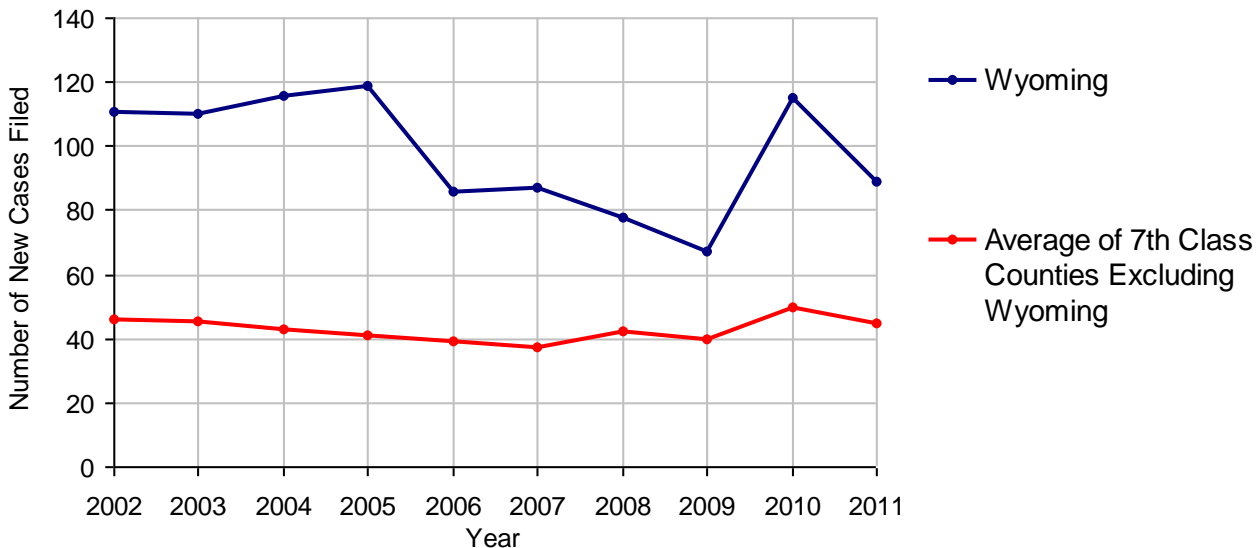
2011 Population Estimate: 28,406
 Class of County: 7th
 No. of Common Pleas Court Judgeships: 1
 (Wyoming and Sullivan combined)

2011 Protection From Abuse

**No. of
Petitions**

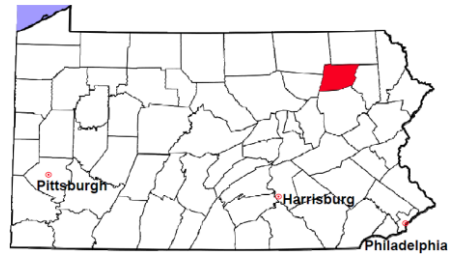
Cases Pending 1/1/2011	9
New Cases Filed in 2011	89
<i>Of these, Petitions Requesting Temporary Orders: 89 (100.0%)</i>	
<i>Temporary Orders DENIED: 4 (4.5%), Temporary Orders GRANTED: 85 (95.5%)</i>	
Cases Available for Processing	98
Processed By:	
Temporary Order DENIED After Ex Parte Hearing and No Evidentiary Hearing Scheduled	4 4.7%
Temporary Order DISMISSED After Evidentiary Hearing and No Final Order Entered	17 19.8%
Final Order DENIED After Evidentiary Hearing Before a Judge	0
Final Order GRANTED After Evidentiary Hearing Before a Judge	33 38.4%
Plaintiff Did Not Appear For Evidentiary Hearing	0
Final Order by STIPULATION OR AGREEMENT Between the Parties	14 16.3%
Petition WITHDRAWN by Plaintiff	18 20.9%
TRANSFERRED to Another Jurisdiction	0
DECEASED Party	0
Other	0
Cases Processed	86 100.0%
Cases Pending 12/31/2011	12

PFA New Cases Filed, 2002-2011

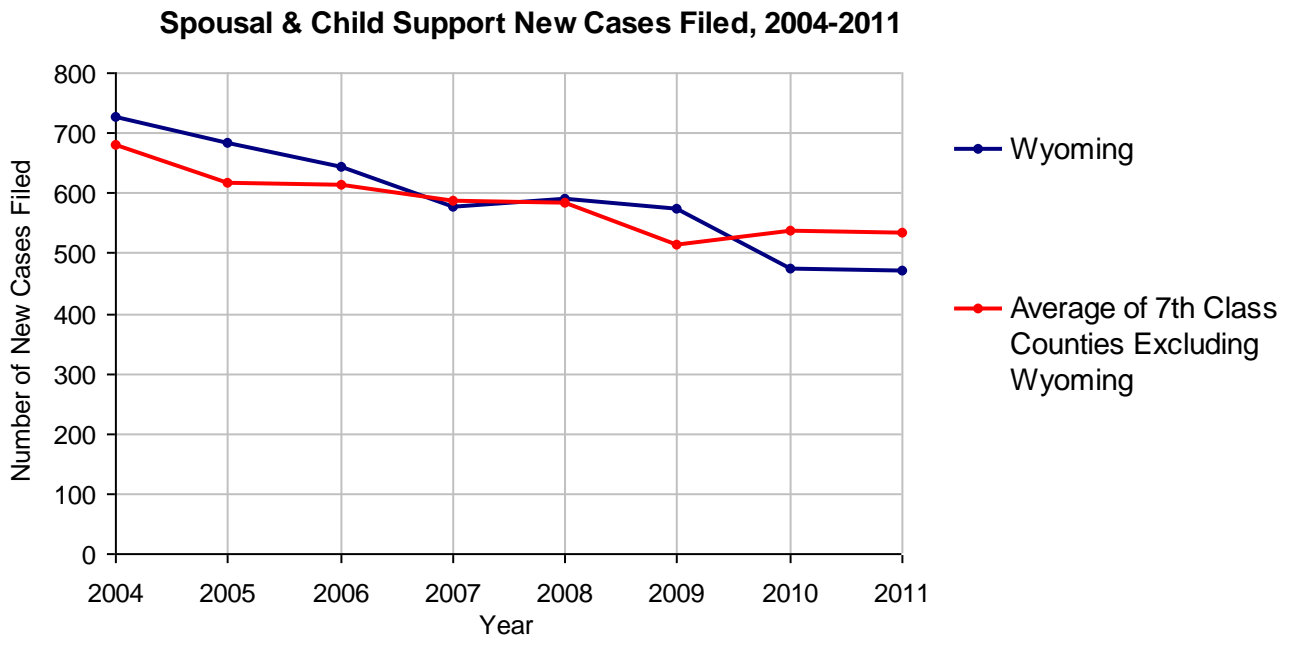


Wyoming County

2011 Population Estimate: 28,406
 Class of County: 7th
 No. of Common Pleas Court Judgeships: 1
 (Wyoming and Sullivan combined)



2011 Spousal & Child Support	No. of Petitions	
Cases Pending 1/1/2011	68	
New Cases Filed in 2011	470	
Dockets Transferred In (+)	10	
Dockets Transferred Out (-)	14	
Cases Available for Processing	534	
Processed By:		
Judge	14	3.1%
Intake Officer	441	96.7%
Hearing Officer	1	0.2%
Other	0	
Cases Processed	456	100.0%
Cases Pending 12/31/2011	78	

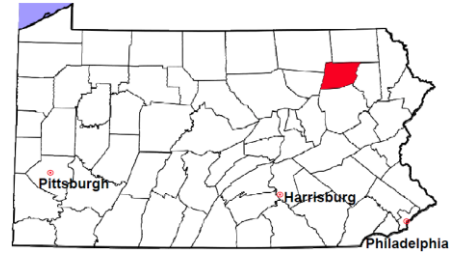


Wyoming County

2011 Population Estimate: 28,406

Class of County: 7th

No. of Common Pleas Court Judgeships: 1
(Wyoming and Sullivan combined)



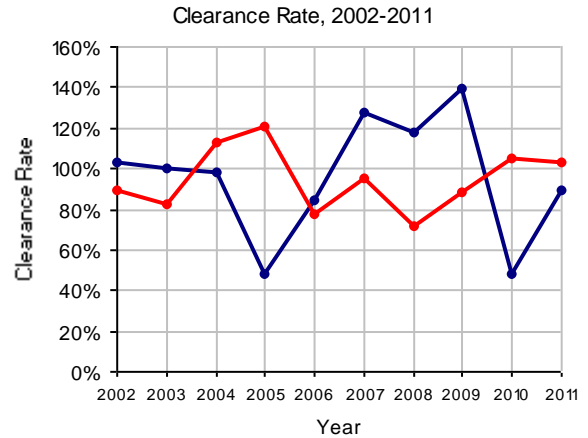
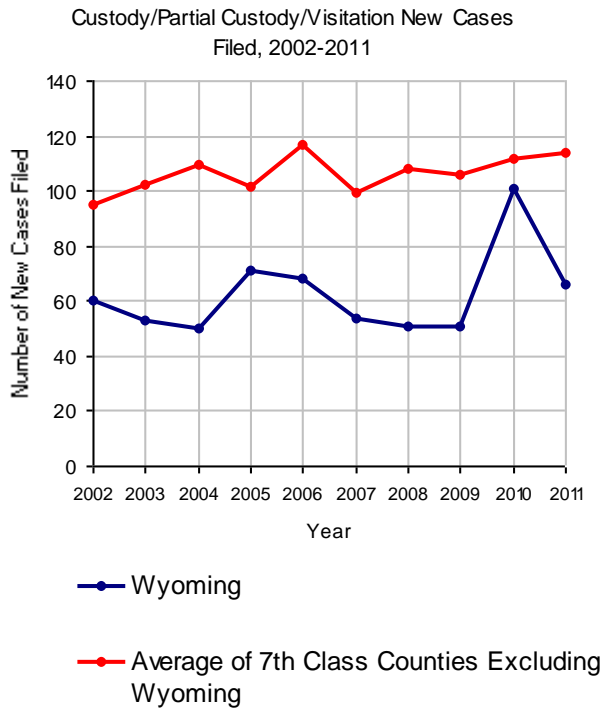
2011 Custody/Partial Custody/Visitation

No. of
Petitions

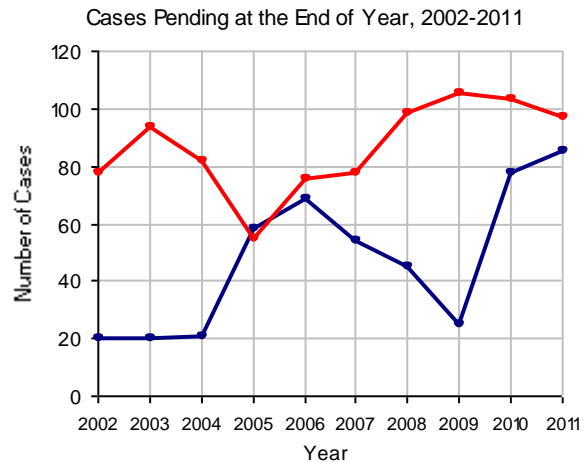
Cases Pending 1/1/2011	78
New Cases Filed in 2011	66
Cases Available for Processing	144

Processed By:

Judge	58	98.3%
Non-Judicial Officer	1	1.7%
Other	0	
Cases Processed	59	100.0%
Cases Pending 12/31/2011	85	

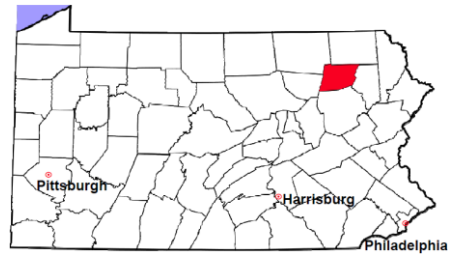


Note: Clearance Rate = Cases Processed / New Cases Filed



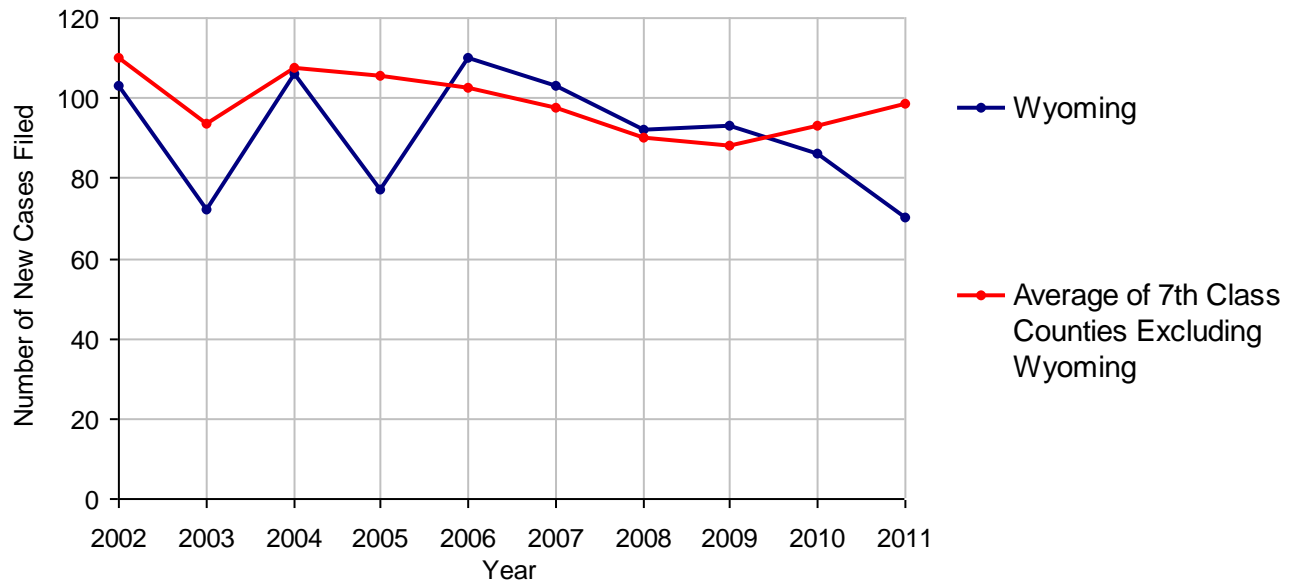
Wyoming County

2011 Population Estimate: 28,406
 Class of County: 7th
 No. of Common Pleas Court Judgeships: 1
 (Wyoming and Sullivan combined)



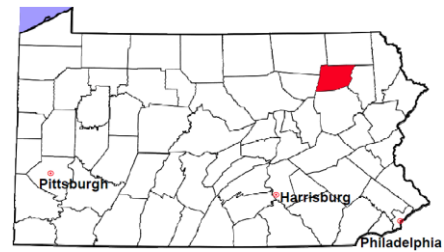
2011 Divorce	No. of Petitions	
Cases Pending 1/1/2011	217	
New Cases Filed in 2011	70	
Cases Available for Processing	287	
Processed By:		
Contested Before a Judge	2	3.5%
Contested Before a Master	12	21.1%
Uncontested	43	75.4%
Other	0	
Cases Processed	57	100.0%
Cases Pending 12/31/2011	230	

Divorce New Cases Filed, 2002-2011



Wyoming County

2011 Population Estimate: 28,406
 Class of County: 7th
 No. of Common Pleas Court Judgeships: 1
 (Wyoming and Sullivan combined)



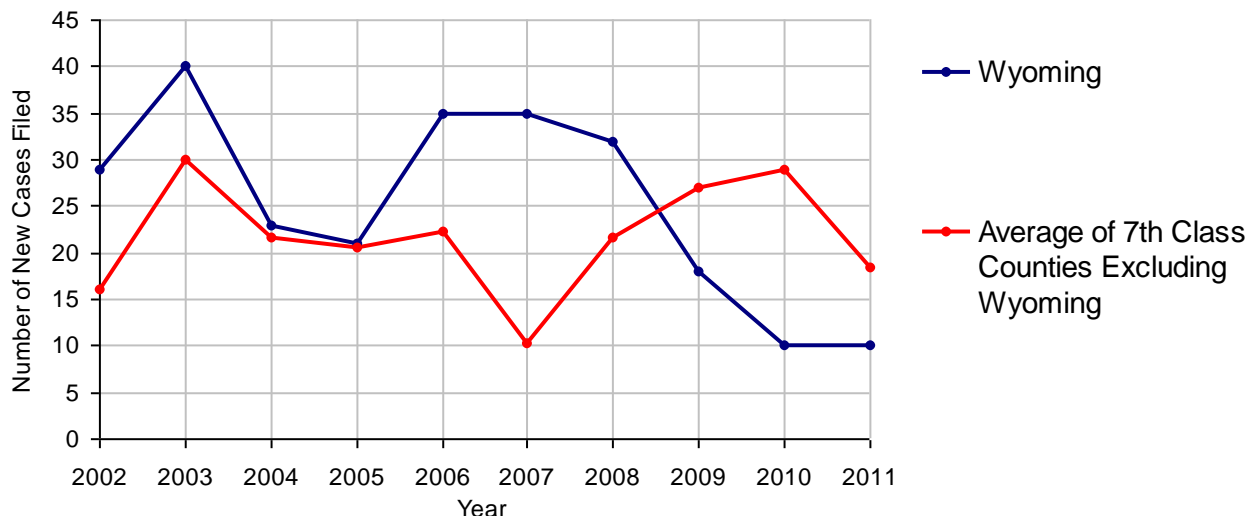
2011 Juvenile Dependency - Active Dependent Inventory



	Abuse/ Neglect	Status Offenses	Total
Cases Pending 1/1/2011	6	0	6
New Petitions Filed in 2011	10	0	10
Other	2	0	2
Total Petitions Available for Processing	18	0	18
Processed by:			
Adjudicated Dependent			
Judge	6	0	6
Master	0	0	0
Adjudicated NOT Dependent			
Judge	0	0	0
Master	0	0	0
Withdrawn/Dismissed/Inactive	0	0	0
Other	4	0	4
Total Petitions Processed	10	0	10
Cases Pending 12/31/2011	8	0	8

Data provided by CPCMS

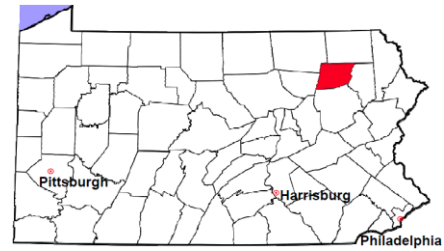
Abuse/Neglect and Status Offenses New Cases Filed, 2002-2011



Note: Dependency data for 2002-2010 were collected manually. Dependency data for 2011 were provided by CPCMS.

Wyoming County

2011 Population Estimate: 28,406
 Class of County: 7th
 No. of Common Pleas Court Judgeships: 1
 (Wyoming and Sullivan combined)



2011 Juvenile Dependency - Adjudicated Dependent Inventory

	Abuse/ Neglect	Status Offenses	Total	
Cases Pending 1/1/2011	16	0	16	
New Adjudicated Dependent Cases	6	0	6	
Other	4	0	4	
Total Adjudicated Dependent Cases	26	0	26	
<u>Court Supervision Terminated:</u>				
Family Reunification	2	0	2	15.4%
Adoption	5	0	5	38.5%
Placement with a Relative/Guardian	4	0	4	30.8%
Aged Out	0	0	0	
Other Permanency Outcomes*	0	0	0	
Other**	2	0	2	15.4%
Total Adjudicated Dependent Cases Terminated	13	0	13	100.0%
Cases Pending 12/31/2011	13	0	13	

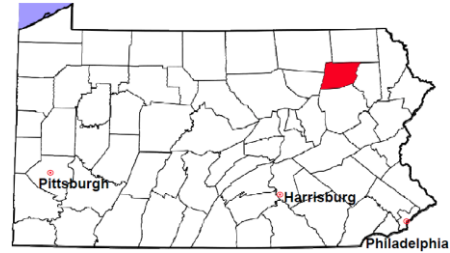
Data provided by CPCMS

* Other Permanency Outcomes include: adjudicated delinquent, death due to natural causes, emancipation, permanent living arrangement, and parent has come forward.

** Other includes cases where Court Supervision is terminated due to transfer out of jurisdiction, withdrawal and administrative closures.

Wyoming County

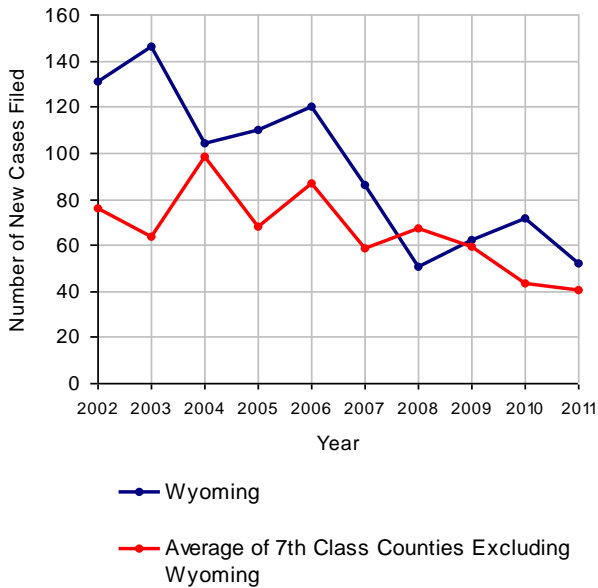
2011 Population Estimate: 28,406
 Class of County: 7th
 No. of Common Pleas Court Judgeships: 1
 (Wyoming and Sullivan combined)



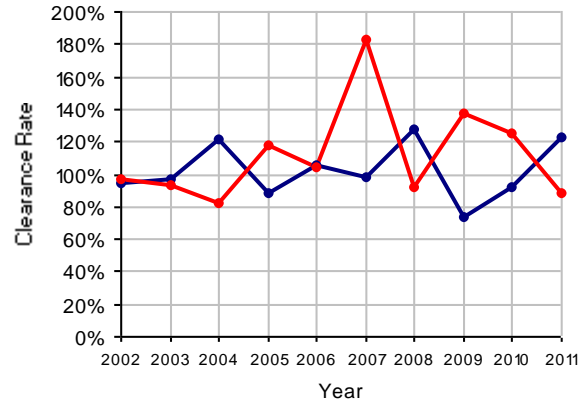
2011 Juvenile Delinquency

	No. of Cases
Cases Pending 1/1/2011	24
New Cases Filed in 2011	52
Cases Available for Processing	76
Processed By:	
Judge	51 79.7%
Non-Judicial Officer	0
Other	13 20.3%
Cases Processed	64 100.0%
Cases Pending 12/31/2011	12

Juvenile Delinquency New Cases Filed, 2002-2011

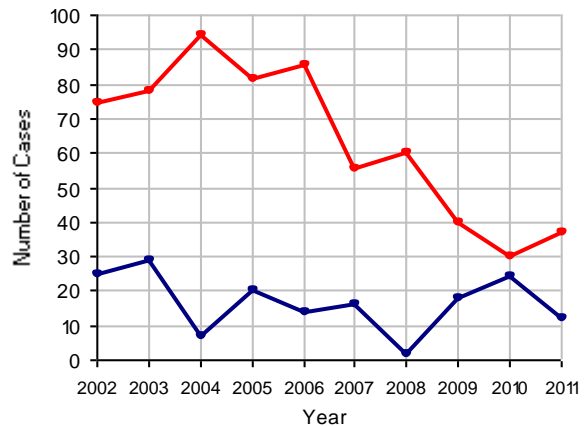


Clearance Rate, 2002-2011



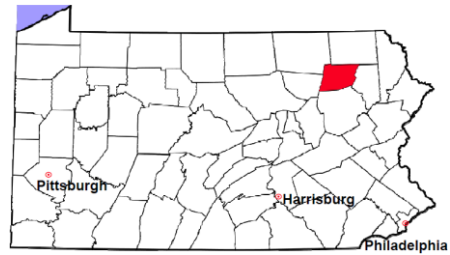
Note: Clearance Rate = Cases Processed / New Cases Filed

Cases Pending at the End of Year, 2002-2011



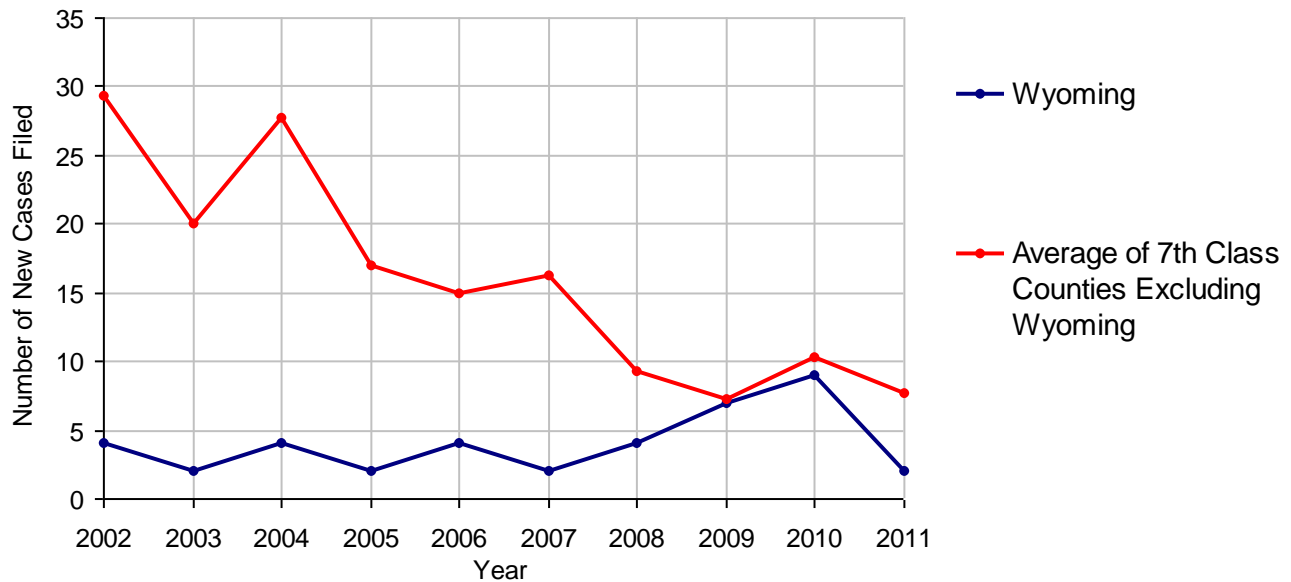
Wyoming County

2011 Population Estimate: 28,406
 Class of County: 7th
 No. of Common Pleas Court Judgeships: 1
 (Wyoming and Sullivan combined)



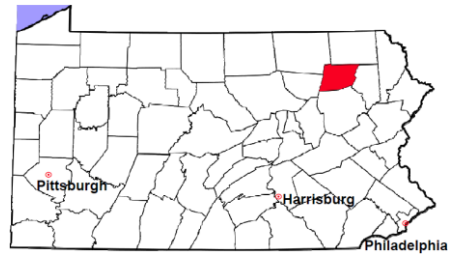
2011 Accounts	No. of Cases	
Cases Pending 1/1/2011	0	
New Cases Filed in 2011	2	
Cases Available for Processing	2	
Processed By:		
Contested before a Judge	0	
Contested before a Non-judicial Officer	0	
Uncontested	2	100.0%
Other	0	
Cases Processed	2	100.0%
Cases Pending 12/31/2011	0	

Accounts New Cases Filed, 2002-2011



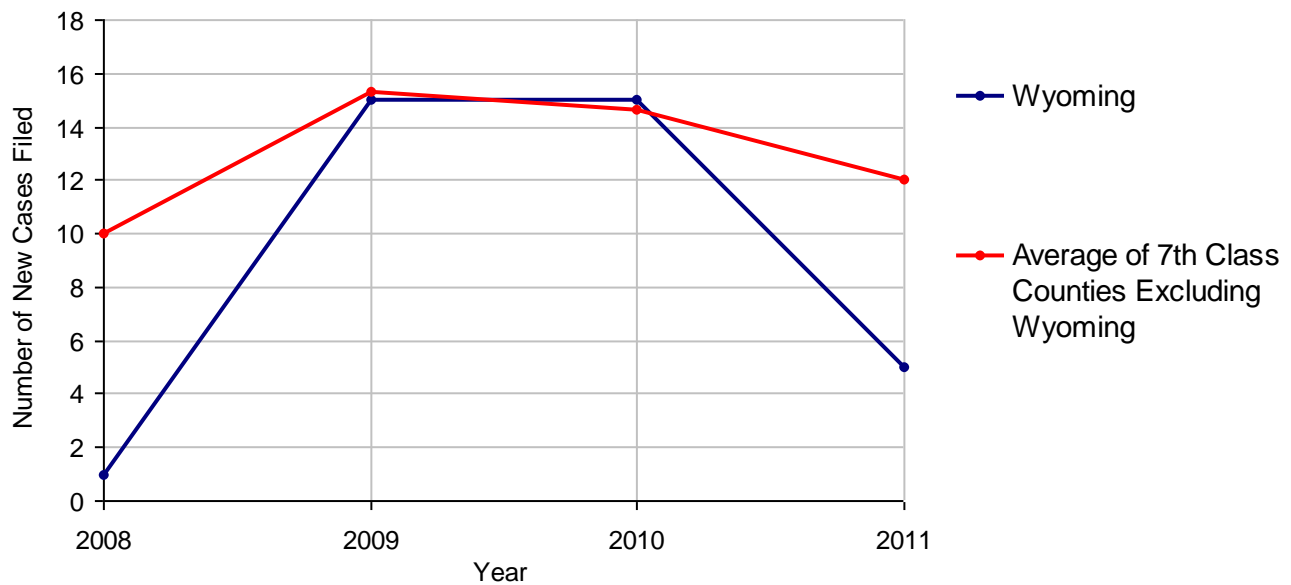
Wyoming County

2011 Population Estimate: 28,406
 Class of County: 7th
 No. of Common Pleas Court Judgeships: 1
 (Wyoming and Sullivan combined)



2011 Adoptions		No. of Cases	
Cases Pending 1/1/2011		3	
New Cases Filed in 2011		5	
Cases Available for Processing		8	
Processed By:			
Contested before a Judge	Granted	0	
	Denied	0	
Uncontested	Granted	6	100.0%
	Denied	0	
Other		0	
Cases Processed		6	100.0%
Cases Pending 12/31/2011		2	

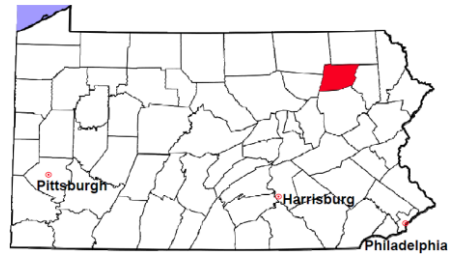
Adoptions New Cases Filed, 2008-2011



Note: Prior to 2008, each petition was counted as one new case, regardless of the number of children listed on the petition. Starting in 2008, each child listed on a petition is counted as a separate case. Therefore, statistics for the years since 2008 should not be compared to those for the years prior to 2008.

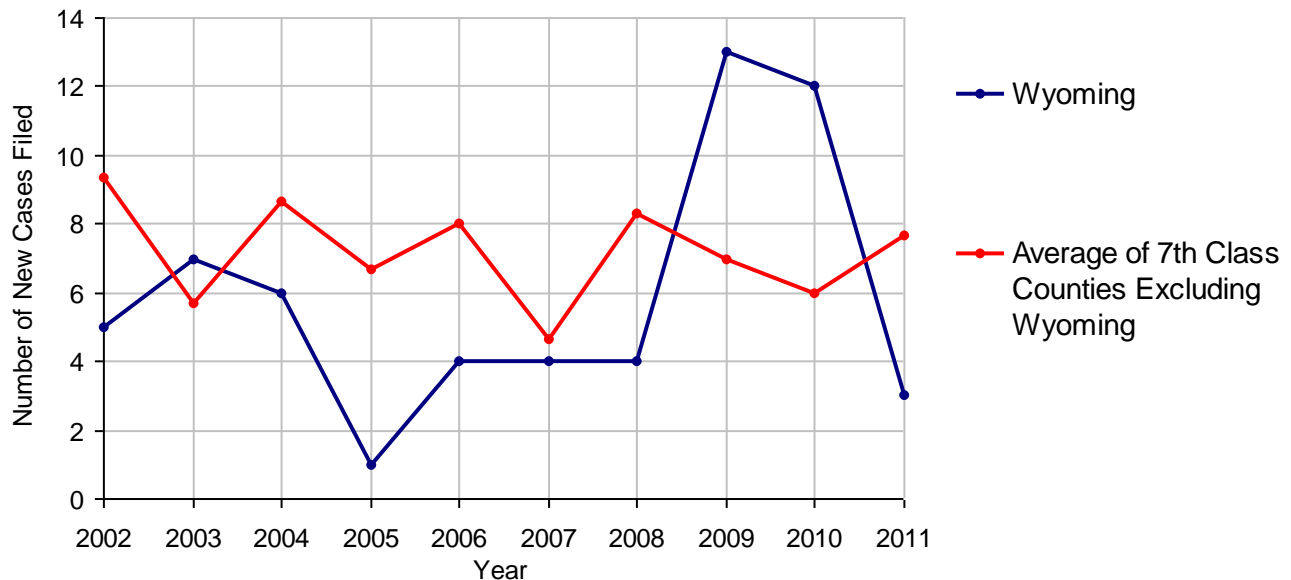
Wyoming County

2011 Population Estimate: 28,406
 Class of County: 7th
 No. of Common Pleas Court Judgeships: 1
 (Wyoming and Sullivan combined)



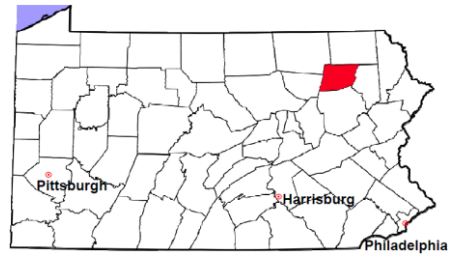
2011 Relinquishments/Terminations	No. of Cases
Cases Pending 1/1/2011	12
New Cases Filed in 2011	3
Cases Available for Processing	15
Processed By:	
Contested before a Judge	0
Uncontested	13 100.0%
Other	0
Cases Processed	13 100.0%
Cases Pending 12/31/2011	2

Relinquishments/Terminations New Cases Filed, 2002-2011



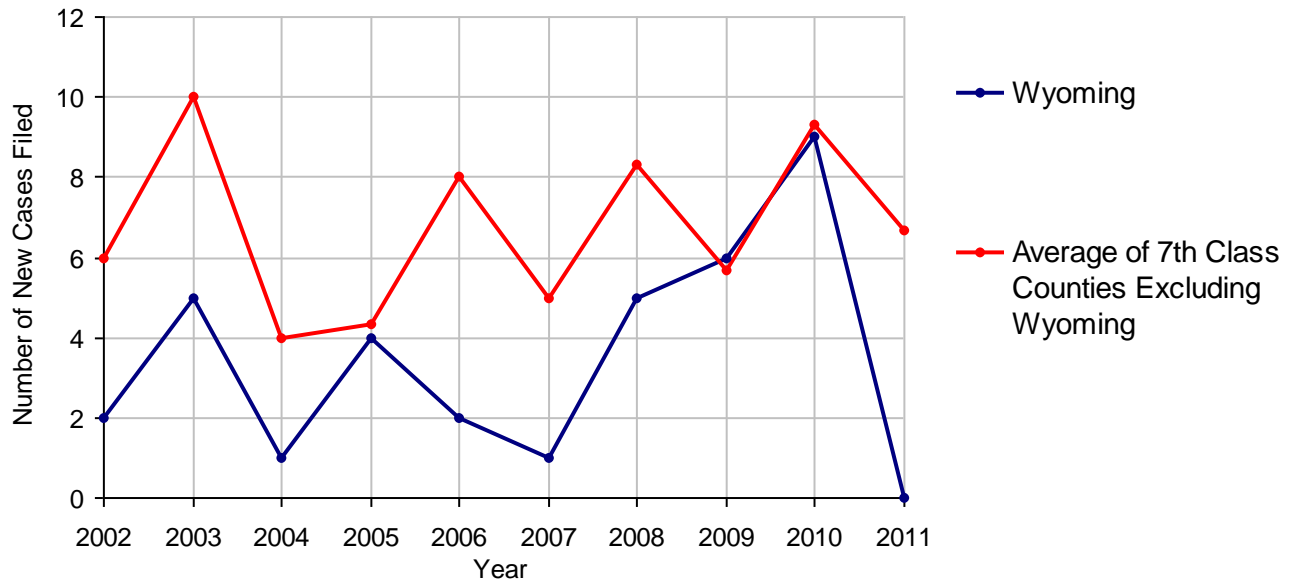
Wyoming County

2011 Population Estimate: 28,406
 Class of County: 7th
 No. of Common Pleas Court Judgeships: 1
 (Wyoming and Sullivan combined)



2011 Appointment of Guardians		No. of Cases
Cases Pending 1/1/2011		8
New Cases Filed in 2011		0
Cases Available for Processing		8
Processed By:		
Contested before a Judge		0
Uncontested		8 100.0%
Other		0
Cases Processed		8 100.0%
Cases Pending 12/31/2011		0

Appointment of Guardians New Cases Filed, 2002-2011

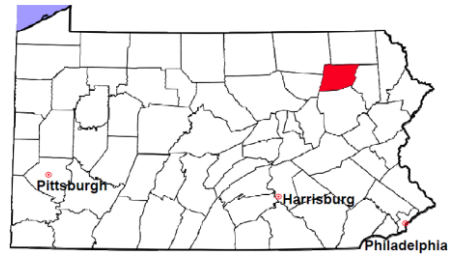


Wyoming County

2011 Population Estimate: 28,406

Class of County: 7th

No. of Common Pleas Court Judgeships: 1
(Wyoming and Sullivan combined)



2011 Jury Activity and Performance Measures

A. Juror Days	390
B. Number Sent to Voir Dire	160
Voir Dire Attendance Rate (B/A * 100)	41.0%
C. Number of Jurors Selected	68
Juror Selection Rate (C/B * 100)	42.5%

Note: In mid-2011, AOPC began utilizing the National Center for State Courts' Jury Managers' Toolbox for collecting jury data. This has resulted in limited jury performance measures being reported for 2011. Additional data will be available in 2012.