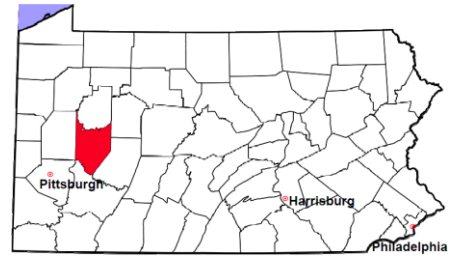


Armstrong County

2012 Population Estimate: 68,409

Class of County: 6th

No. of Common Pleas Court Judgeships: 2



2012 Criminal	No. of Cases
---------------	--------------

Cases Pending 1/1/2012	395
New Cases Filed in 2012	866
Reopened Cases	44
Cases Available for Disposition	1,305
Disposed by:	
Withdrawn/Dismissed	90 10.2%
ARD	237 26.9%
Guilty Plea	500 56.8%
Non-Jury Trial	3 0.3%
Jury Trial	14 1.6%
Inactive	13 1.5%
Other	23 2.6%
Total Cases Disposed	880 100.0%
Cases Pending 12/31/2012	425
Cases Awaiting Sentencing	83

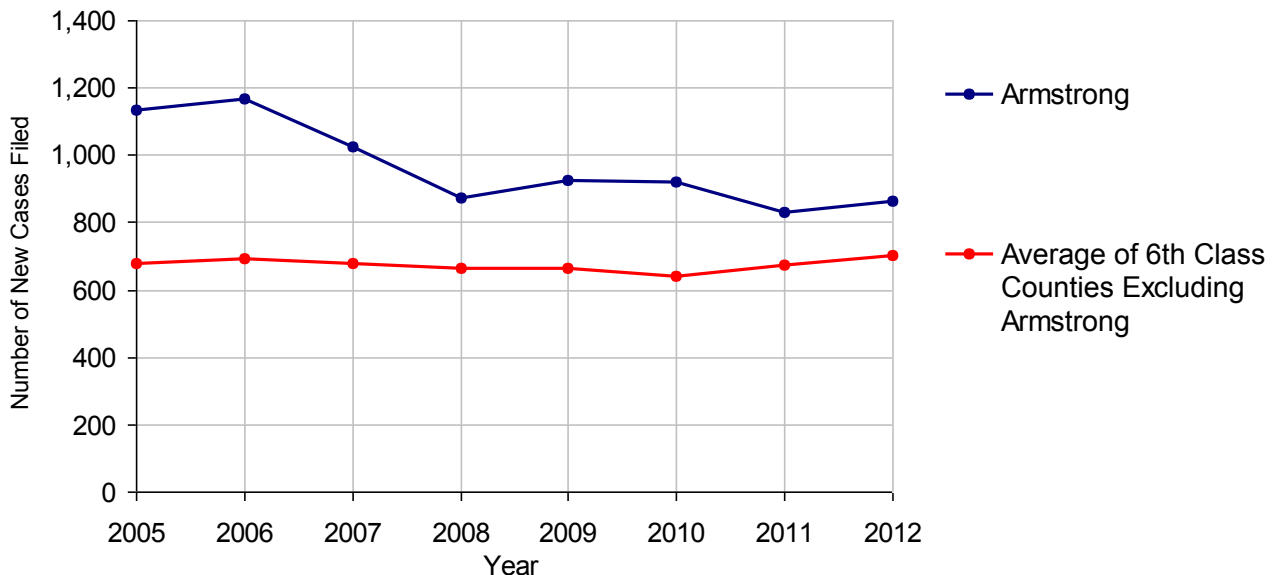


Age of Pending Cases as of 12/31/2012

0-60 Days	140	32.9%
61-120 Days	117	27.5%
121-180 Days	81	19.1%
181-240 Days	18	4.2%
241-300 Days	15	3.5%
301-360 Days	9	2.1%
Over 360 Days	45	10.6%
Total	425	100.0%

Data provided by CPCMS

Criminal New Cases Filed, 2005-2012

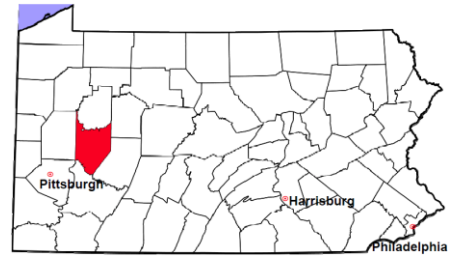


Armstrong County

2012 Population Estimate: 68,409

Class of County: 6th

No. of Common Pleas Court Judgeships: 2



2012 Criminal - New Cases by Case Type



Case Type	Felony	Misdemeanor	Summary /Ungraded	Total
Person	51	57	0	108
Property	137	139	1	277
Drug	51	83	0	134
Weapon	4	3	0	7
Public Order	16	49	2	67
Motor Vehicle - DWI/DUI	0	263	2	265
Motor Vehicle - Other	0	8	0	8
Other	0	0	0	0
Total	259	602	5	866
	29.9%	69.5%	0.6%	100.0%

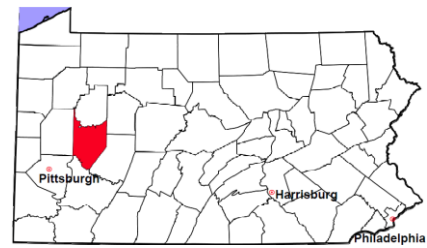
Data provided by CPCMS

Armstrong County

2012 Population Estimate: 68,409

Class of County: 6th

No. of Common Pleas Court Judgeships: 2

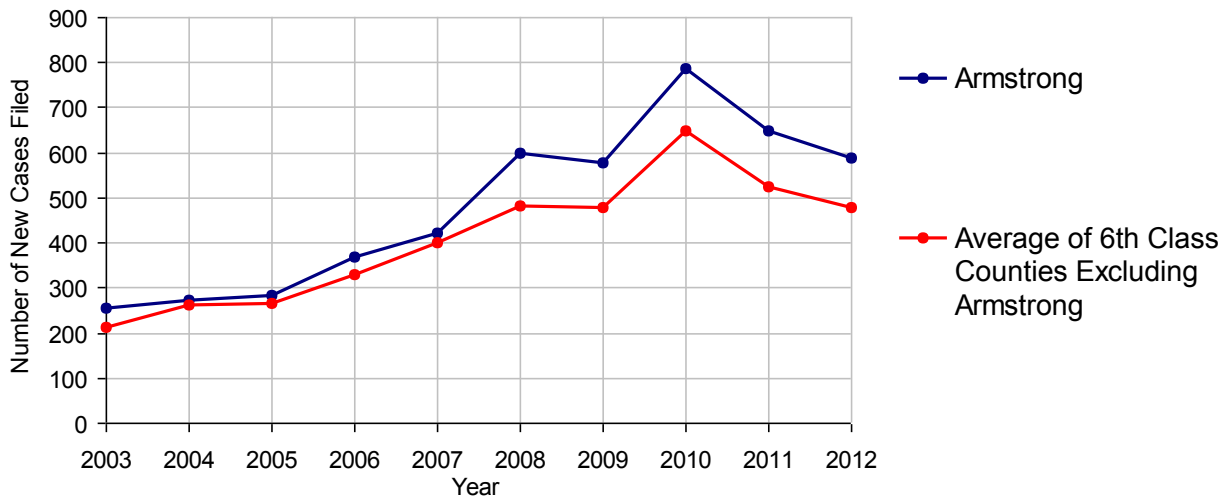


2012 Civil	Civil Action	Other	Total
Cases Pending 1/1/2012	491	410	901
Docketed Cases	326	262	588
Arbitration Appeals	0	0	0
Transferred In	1	0	1
Returned to Active	0	0	0
Cases Available for Processing	818	672	1,490
Disposed By:			
Default Judgments	140	130	270
Cases Decided by Arbitration Board	13	3	16
Dispositive Motions	15	43	58
Settlements	31	19	50
Moved to Inactive Status	0	0	0
Transferred/Withdrawn	20	5	25
Administrative Purge	66	81	147
Other	166	107	273
Jury Trial	2	0	2
Non-Jury Trial	0	1	1
Total Cases Disposed	453	389	842
Cases Pending 12/31/2012	365	283	648

Age of Pending Cases as of 12/31/2012 (Civil Action Only)

0-6 months	101	27.7%
7-12 months	67	18.4%
13-18 months	43	11.8%
19-24 months	55	15.1%
25-30 months	36	9.9%
31-36 months	25	6.8%
37-42 months	9	2.5%
43-48 months	6	1.6%
49-54 months	2	0.5%
55-60 months	4	1.1%
61-66 months	2	0.5%
67-72 months	2	0.5%
Over 72 months	13	3.6%
Total	365	100.0%

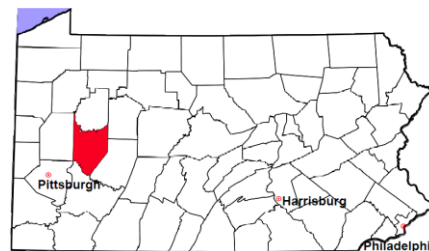
Docketed Cases, 2003-2012



Note: Prior to June 2010, docketed cases under the "Other" category were not reported. The inclusion of these cases starting from June 2010 may contribute to an increase in docketed cases from 2009 to 2010.

Armstrong County

2012 Population Estimate: 68,409
 Class of County: 6th
 No. of Common Pleas Court Judgeships: 2



2012 Civil - Docketed Cases Listed by Case Type

TORT	64	10.9%
<i>(does not include mass tort)</i>		
Intentional	4	
Malicious Prosecution	1	
Motor Vehicle	37	
Nuisance	2	
Premise Liability	7	
Product Liability	2	
Slander/Libel/Defamation	0	
Other	11	
MASS TORT	0	
Asbestos	0	
Tobacco	0	
Toxic Tort - DES	0	
Toxic Tort - Implant	0	
Toxic Waste	0	
Other	0	
PROFESSIONAL LIABILITY	8	1.4%
Dental	0	
Legal	0	
Medical Malpractice	8	
Other	0	
CONTRACT	248	42.2%
<i>(does not include judgments)</i>		
Buyer Plaintiff	4	
Debt Collection: Credit Card	143	
Debt Collection: Other	79	
Employment Dispute:		
Employment Dispute: Discriminatio	1	
Employment Dispute: Other	2	
Other	19	

REAL PROPERTY	207	35.2%
Ejectment*	17	
Eminent Domain/Condemnation	8	
Ground Rent	1	
Landlord/Tenant Dispute	5	
Mortgage Foreclosure:		
Residential*	148	
Commercial*	4	
Partition of Real Property*	1	
Quiet Title*	8	
Other*	15	
CIVIL APPEALS	32	5.4%
<i>- Administrative Agencies</i>		
Board of Assessment*	4	
Board of Elections*	0	
Dept. of Transportation*	20	
Zoning Board*	2	
Statutory Appeal - Other*	2	
Other*	4	
MISCELLANEOUS	29	4.9%
Common Law/		
Statutory Arbitration*	0	
Declaratory Judgment*	5	
Mandamus*	0	
Non-Domestic Relations		
Restraining Order*	0	
Quo Warranto*	0	
Replevin*	4	
Other*	20	
TOTAL DOCKETED CASES:	588	100%

Of the Docketed Cases:

Pro Se Filings: 21 3.6% Class Action Suits: 0 MDJ Appeals: 37 6.3%

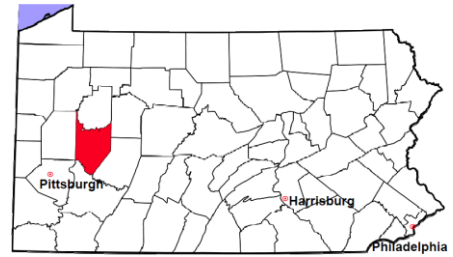
* Civil Other

Armstrong County

2012 Population Estimate: 68,409

Class of County: 6th

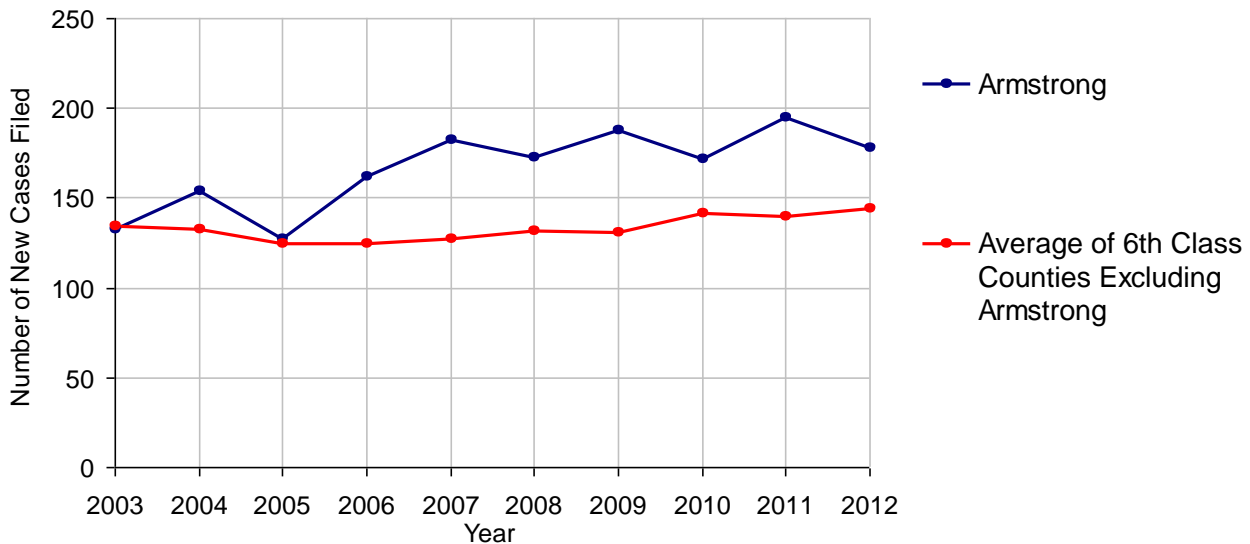
No. of Common Pleas Court Judgeships: 2



2012 Protection From Abuse

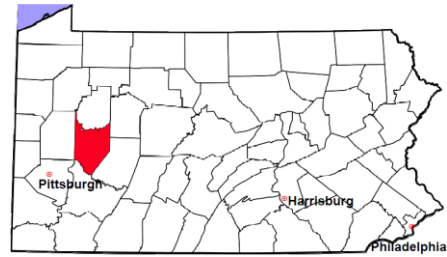
	No. of Petitions
Cases Pending 1/1/2012	9
New Cases Filed in 2012	178
<i>Of these, Petitions Requesting Temporary Orders: 178 (100.0%)</i>	
<i>Temporary Orders DENIED: 2 (1.1%), Temporary Orders GRANTED: 176 (98.9%)</i>	
Cases Available for Processing	187
Processed By:	
Temporary Order DENIED After Ex Parte Hearing and No Evidentiary Hearing Scheduled	0
Temporary Order DISMISSED After Evidentiary Hearing and No Final Order Entered	7 4.1%
Final Order DENIED After Evidentiary Hearing Before a Judge	6 3.6%
Final Order GRANTED After Evidentiary Hearing Before a Judge	11 6.5%
Plaintiff Did Not Appear For Evidentiary Hearing	11 6.5%
Final Order by STIPULATION OR AGREEMENT Between the Parties	75 44.4%
Petition WITHDRAWN by Plaintiff	45 26.6%
TRANSFERRED to Another Jurisdiction	0
DECEASED Party	0
Other	14 8.3%
Cases Processed	169 100.0%
Cases Pending 12/31/2012	18

PFA New Cases Filed, 2003-2012



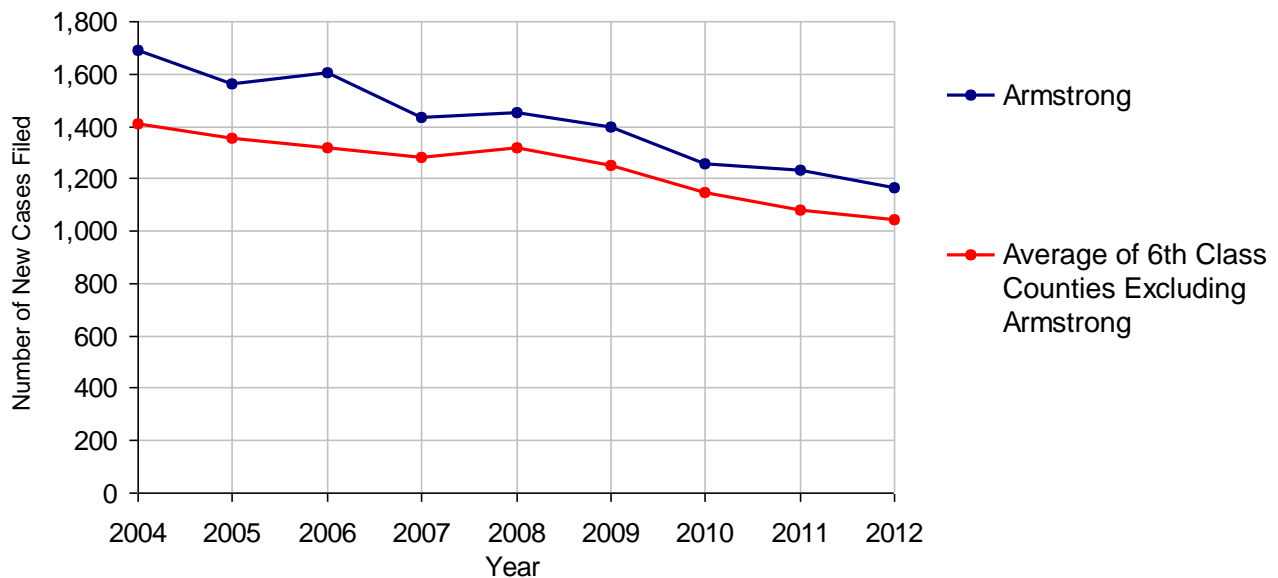
Armstrong County

2012 Population Estimate: 68,409
 Class of County: 6th
 No. of Common Pleas Court Judgeships: 2



2012 Spousal & Child Support	No. of Petitions	
Cases Pending 1/1/2012	115	
New Cases Filed in 2012	1,168	
Dockets Transferred In (+)	9	
Dockets Transferred Out (-)	5	
Cases Available for Processing	1,287	
Processed By:		
Judge	14	1.2%
Intake Officer	1,017	89.2%
Hearing Officer	109	9.6%
Other	0	
Cases Processed	1,140	100.0%
Cases Pending 12/31/2012	147	

Spousal & Child Support New Cases Filed, 2004-2012

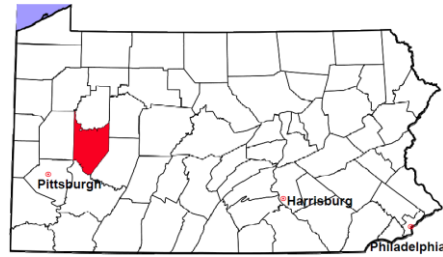


Armstrong County

2012 Population Estimate: 68,409

Class of County: 6th

No. of Common Pleas Court Judgeships: 2

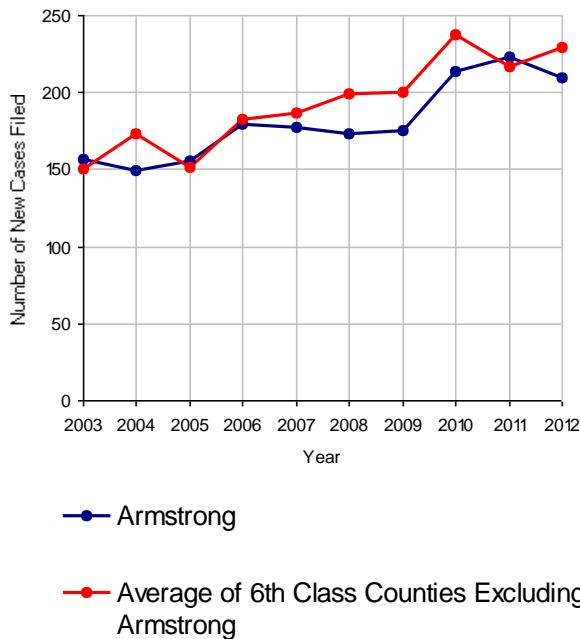


2012 Custody/Partial Custody/Visitation

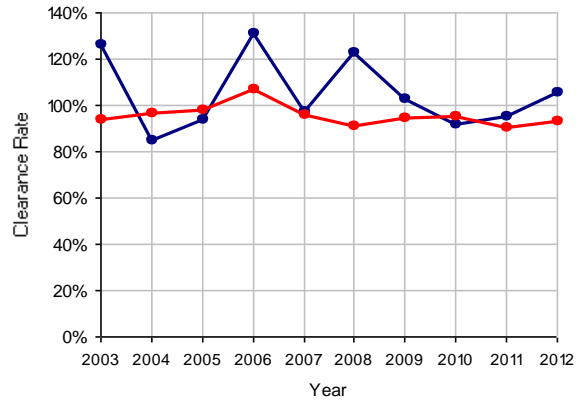
No. of Petitions

Cases Pending 1/1/2012	120
New Cases Filed in 2012	210
Cases Available for Processing	330
Processed By:	
Judge	54 24.3%
Non-Judicial Officer	0
Other	168 75.7%
Cases Processed	222 100.0%
Cases Pending 12/31/2012	108

Custody/Partial Custody/Visitation New Cases Filed, 2003-2012

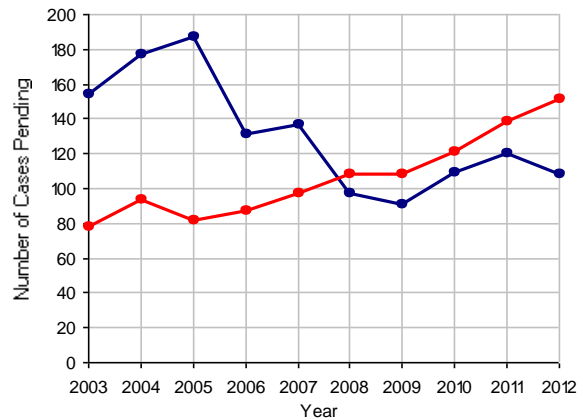


Clearance Rate, 2003-2012



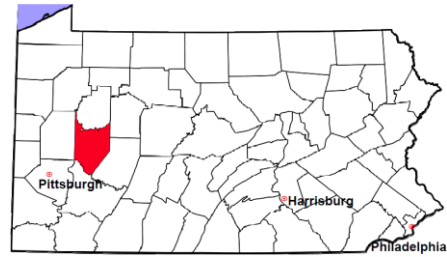
Note: Clearance Rate = Cases Processed / New Cases Filed

Cases Pending at the End of Year, 2003-2012



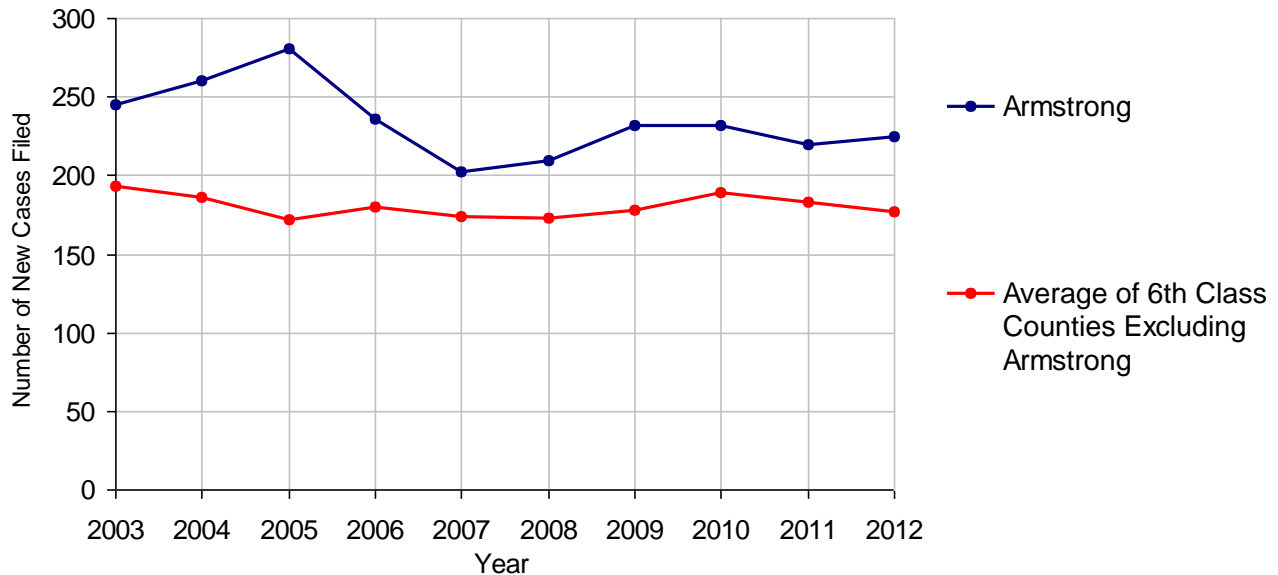
Armstrong County

2012 Population Estimate: 68,409
 Class of County: 6th
 No. of Common Pleas Court Judgeships: 2



2012 Divorce	No. of Petitions	
Cases Pending 1/1/2012	112	
New Cases Filed in 2012	225	
Cases Available for Processing	337	
Processed By:		
Contested Before a Judge	0	
Contested Before a Master	31	15.1%
Uncontested	174	84.9%
Other	0	
Cases Processed	205	100.0%
Cases Pending 12/31/2012	132	

Divorce New Cases Filed, 2003-2012

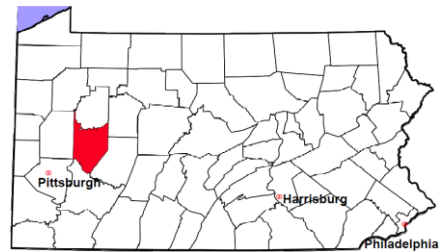


Armstrong County

2012 Population Estimate: 68,409

Class of County: 6th

No. of Common Pleas Court Judgeships: 2



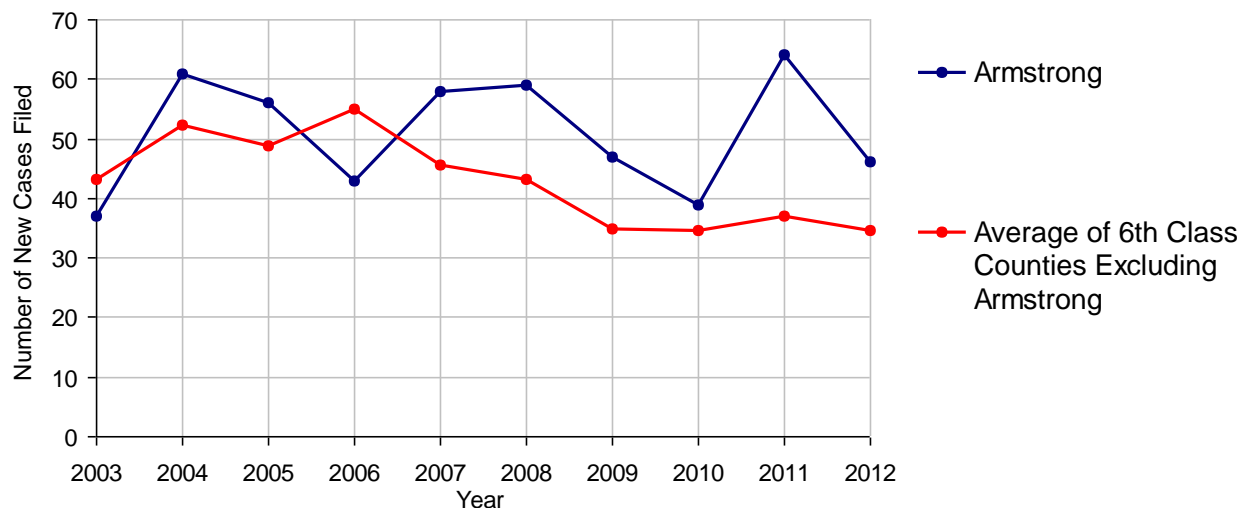
2012 Juvenile Dependency - Active Dependent Inventory



	Abuse/ Neglect	Status Offenses	Total
Cases Pending 1/1/2012	6	0	6
New Petitions Filed in 2012	31	15	46
Other	0	0	0
Total Petitions Available for Processing	37	15	52
Processed by:			
Adjudicated Dependent			
Judge	23	10	33
Master	0	0	0
Adjudicated NOT Dependent			
Judge	0	0	0
Master	0	0	0
Withdrawn/Dismissed/Inactive	11	0	11
Other	3	1	4
Total Petitions Processed	37	11	48
Cases Pending 12/31/2012	0	4	4

Data provided by CPCMS

Abuse/Neglect and Status Offenses New Cases Filed, 2003-2012



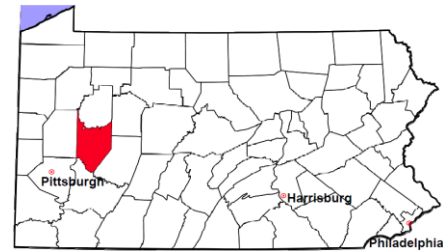
Note: Dependency data for 2002-2010 were collected manually. Dependency data for 2011 and 2012 were provided by CPCMS.

Armstrong County

2012 Population Estimate: 68,409

Class of County: 6th

No. of Common Pleas Court Judgeships: 2



2012 Juvenile Dependency - Adjudicated Dependent Inventory



	Abuse/ Neglect	Status Offenses	Total
Cases Pending 1/1/2012	64	24	88
New Adjudicated Dependent Cases	23	10	33
Other	3	0	3
Total Adjudicated Dependent Cases	90	34	124

Court Supervision Terminated:

Family Reunification	6	13.6%	1	7.1%	7	12.1%
Adoption	8	18.2%	0		8	13.8%
Placement with a Relative/Guardian	23	52.3%	10	71.4%	33	56.9%
Aged Out	2	4.5%	0		2	3.4%
Other Permanency Outcomes*	2	4.5%	2	14.3%	4	6.9%
Other**	3	6.8%	1	7.1%	4	6.9%
Total Adjudicated Dependent Cases Terminated	44	100.0%	14	100.0%	58	100.0%
Cases Pending 12/31/2012	46		20		66	

Data provided by CPCMS

* Other Permanency Outcomes include: adjudicated delinquent, death due to natural causes, death due to negligence, emancipation, permanent living arrangement, and parent has come forward.

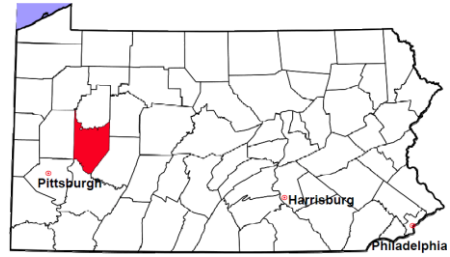
** Other includes cases where court supervision is terminated due to transfer out of jurisdiction, withdrawal and administrative closure.

Armstrong County

2012 Population Estimate: 68,409

Class of County: 6th

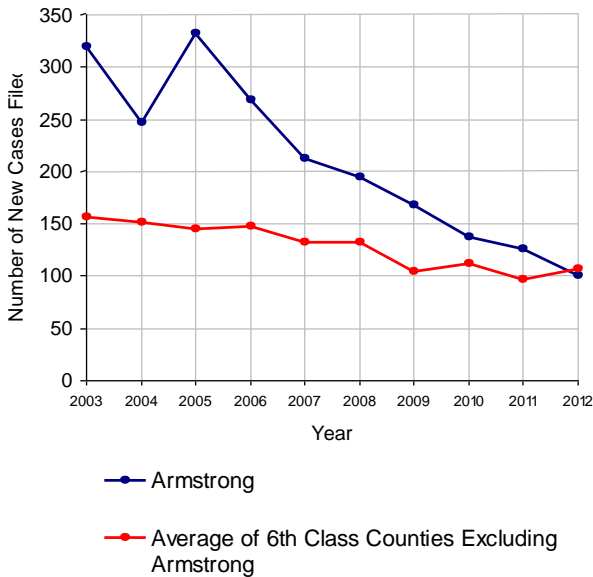
No. of Common Pleas Court Judgeships: 2



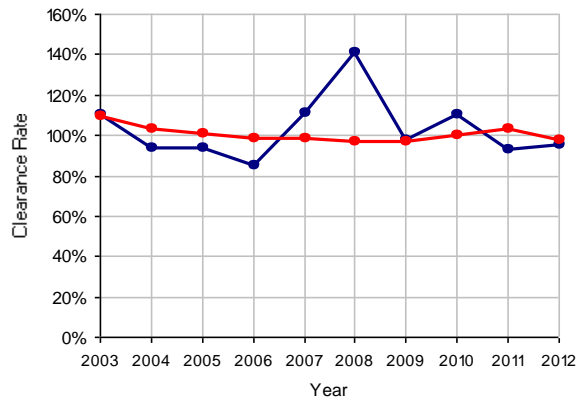
2012 Juvenile Delinquency

	No. of Cases
Cases Pending 1/1/2012	34
New Cases Filed in 2012	100
Cases Available for Processing	134
Processed By:	
Judge	53 55.8%
Non-Judicial Officer	39 41.1%
Other	3 3.2%
Cases Processed	95 100.0%
Cases Pending 12/31/2012	39

Juvenile Delinquency New Cases Filed, 2003-2012

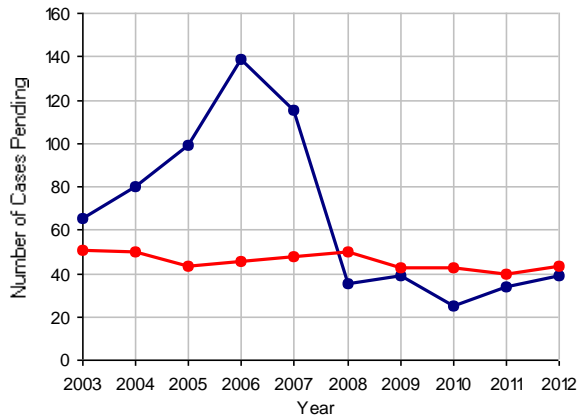


Clearance Rate, 2003-2012



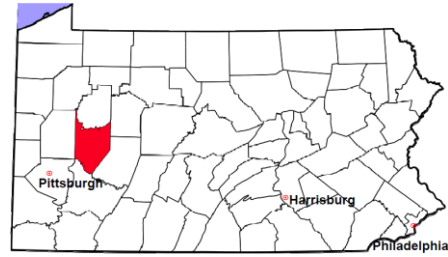
Note: Clearance Rate = Cases Processed / New Cases Filed

Cases Pending at the End of Year, 2003-2012



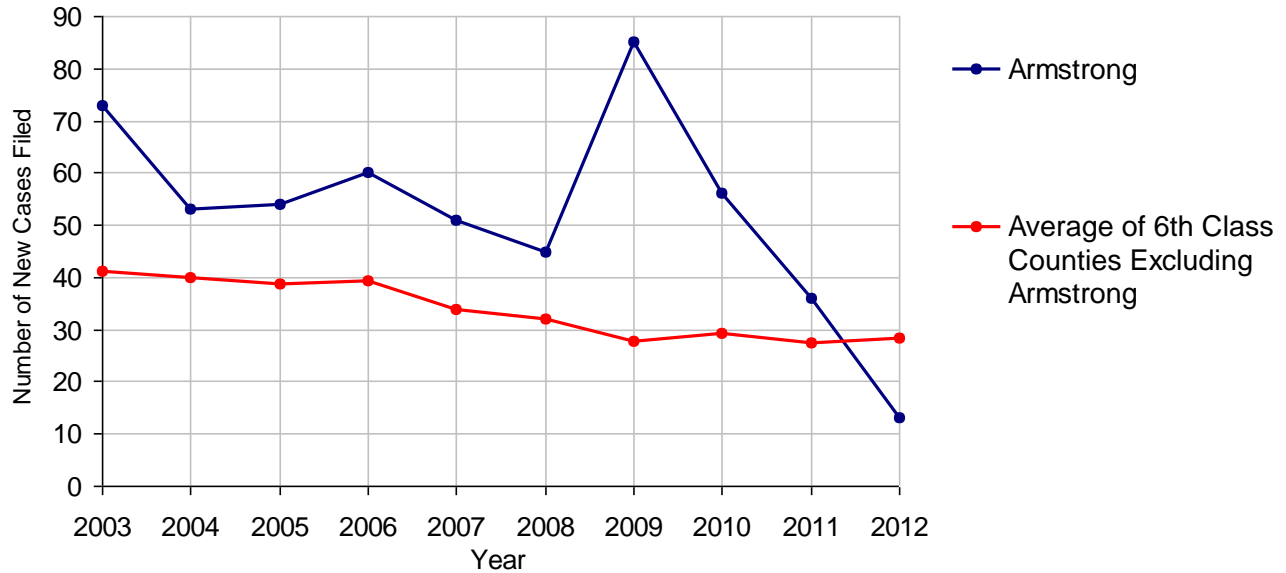
Armstrong County

2012 Population Estimate: 68,409
 Class of County: 6th
 No. of Common Pleas Court Judgeships: 2



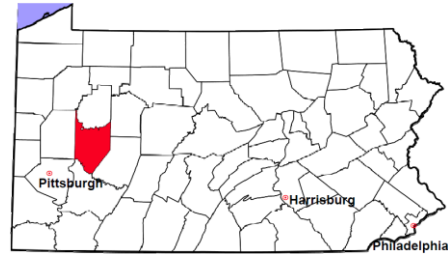
2012 Accounts	No. of Cases	
Cases Pending 1/1/2012	14	
New Cases Filed in 2012	13	
Cases Available for Processing	27	
Processed By:		
Contested before a Judge	0	
Contested before a Non-judicial Officer	0	
Uncontested	13	86.7%
Other	2	13.3%
Cases Processed	15	100.0%
Cases Pending 12/31/2012	12	

Accounts New Cases Filed, 2003-2012



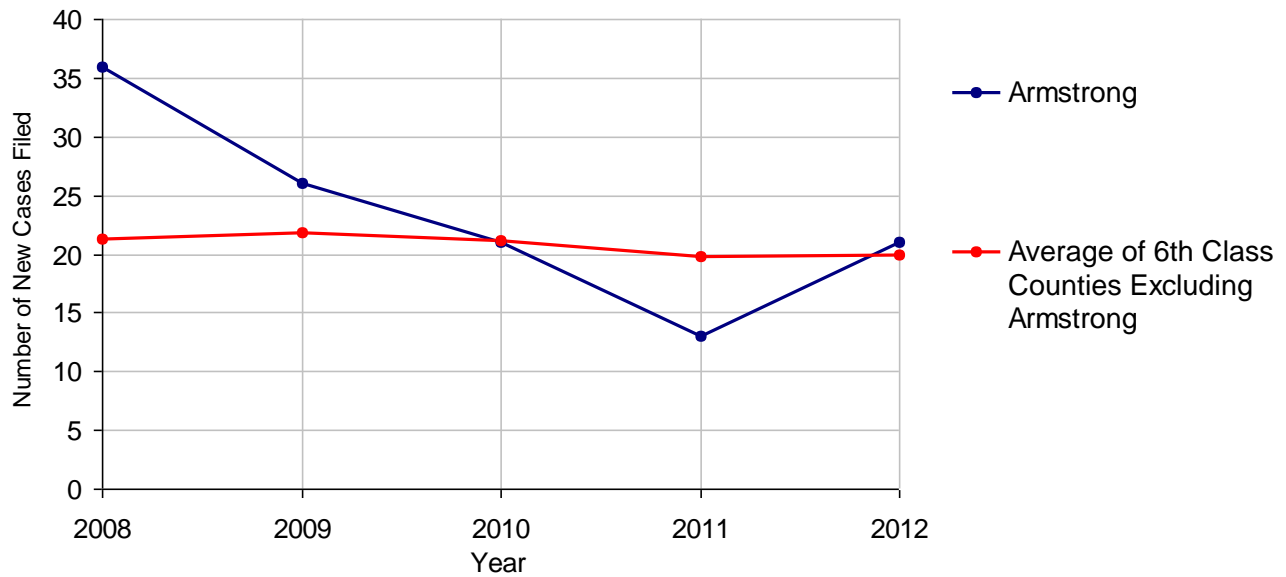
Armstrong County

2012 Population Estimate: 68,409
 Class of County: 6th
 No. of Common Pleas Court Judgeships: 2



2012 Adoptions		No. of Cases	
Cases Pending 1/1/2012		9	
New Cases Filed in 2012		21	
Cases Available for Processing		30	
Processed By:			
Contested before a Judge	Granted	0	
	Denied	0	
Uncontested	Granted	20	87.0%
	Denied	0	
Other		3	13.0%
Cases Processed		23	100.0%
Cases Pending 12/31/2012		7	

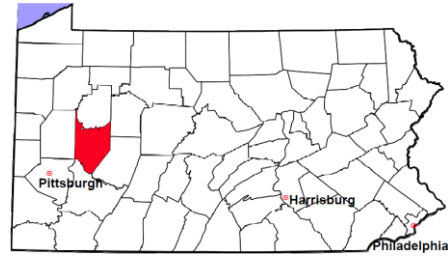
Adoptions New Cases Filed, 2008-2012



Note: Prior to 2008, each petition was counted as one new case, regardless of the number of children listed on the petition. Starting in 2008, each child listed on a petition is counted as a separate case. Therefore, statistics since 2008 should not be compared to statistics prior to 2008.

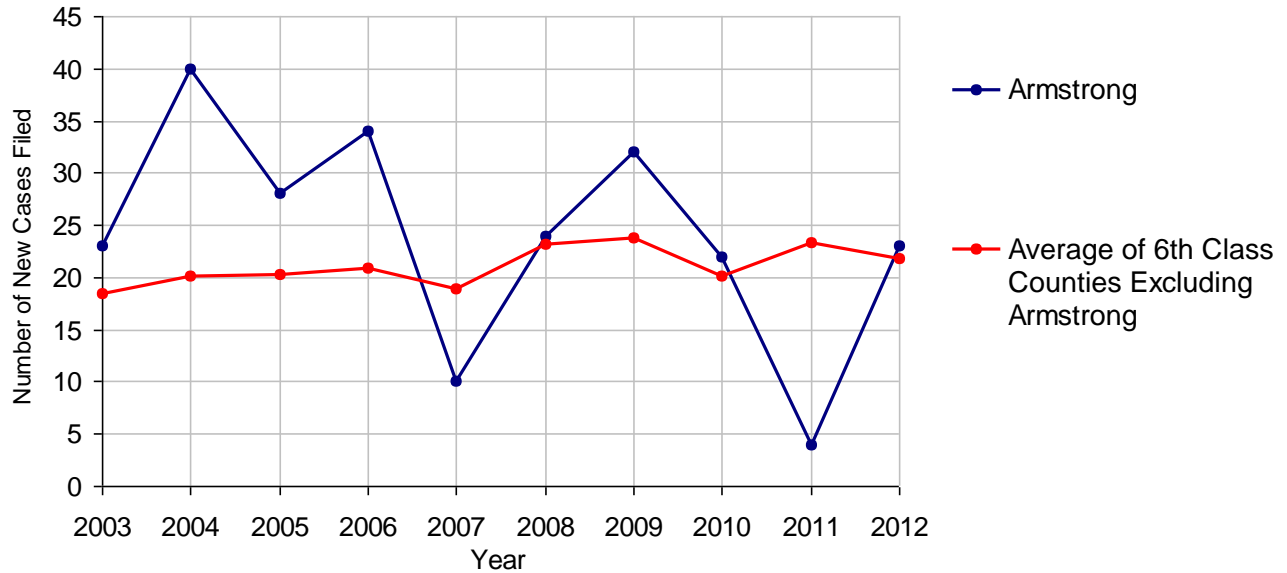
Armstrong County

2012 Population Estimate: 68,409
 Class of County: 6th
 No. of Common Pleas Court Judgeships: 2



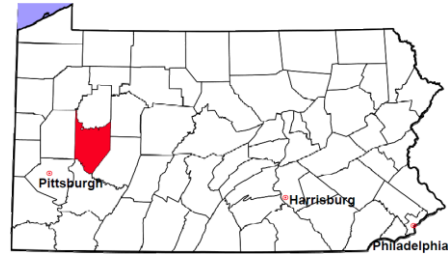
2012 Relinquishments/Terminations		No. of Cases
Cases Pending 1/1/2012		9
New Cases Filed in 2012		23
Cases Available for Processing		32
Processed By:		
Contested before a Judge		0
Uncontested	13	100.0%
Other		0
Cases Processed	13	100.0%
Cases Pending 12/31/2012		19

Relinquishments/Terminations New Cases Filed, 2003-2012



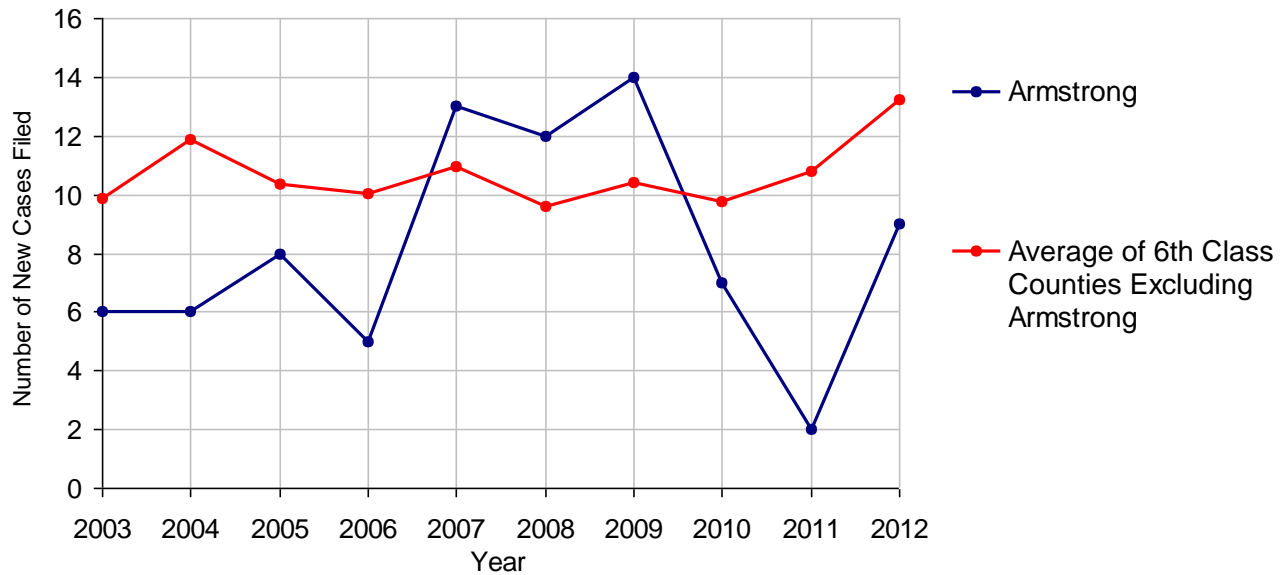
Armstrong County

2012 Population Estimate: 68,409
 Class of County: 6th
 No. of Common Pleas Court Judgeships: 2



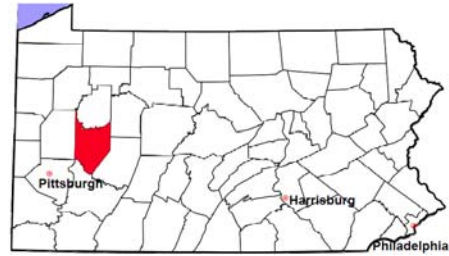
2012 Appointment of Guardians	No. of Cases
Cases Pending 1/1/2012	4
New Cases Filed in 2012	9
Cases Available for Processing	13
Processed By:	
Contested before a Judge	0
Uncontested	5 100.0%
Other	0
Cases Processed	5 100.0%
Cases Pending 12/31/2012	8

Appointment of Guardians New Cases Filed, 2003-2012



Armstrong County

2012 Population Estimate: 68,409
 Class of County: 6th
 No. of Common Pleas Court Judgeships: 2



2012 Jury Yield and Utilization

Jury Yield

Qualification Questionnaires/Summonses Mailed:	3,009	A		
Returned Undeliverable:	364	B	12.1%	Of Qualification Questionnaires/Summonses Mailed
Not Responded to:	395	C	13.1%	
the Number of Prospective Jurors:				
Disqualified:	37	D	1.2%	
Exempted:	24	E	0.8%	
Excused:	895	F	29.7%	
Deferred to New Term:	158	G	5.3%	
Deferred from Previous Term:	154	H	5.1%	
Total Number of Qualified Jurors Available for Service:	1,290	I	42.9%	

I=A-B-C-D-E-F-G+H

Jury Utilization

the Number of Jurors:				
Reporting for Service:	1,024		79.4%	Of Jurors Qualified and Available
Told Not to Report for Service:	504		39.1%	
Sent to Courtroom for Jury Selection (Voir Dire):	744		72.7%	Of Jurors Reporting for Service
Impanelled or Sworn (jurors/alternates):	252		24.6%	
Removed for Cause/Hardship:	236			
Removed by Peremptory Challenge:	193			

Jury Costs

Total Annual Budget for Juror Operations:	\$24,760.00	J
Average Cost Per Juror:	\$8.23	K

K=J/A

In mid-2011, AOPC began utilizing the National Center for State Courts' Jury Managers' Toolbox for collecting jury data. In 2012, the counties began providing additional jury data which included information about the summoning practices in the counties. With this additional data, we can now see not only how many citizens come to our courthouses every day in anticipation of serving on a jury, but the number of citizens actually summonsed and the number of those summonsed who are exempt, excused or disqualified from service. With this wider view of the jury process, we can determine the efficiency with which our courts operate, and with the assistance of the Jury Managers' Toolbox find guidance in streamlining the jury summonsing practices.