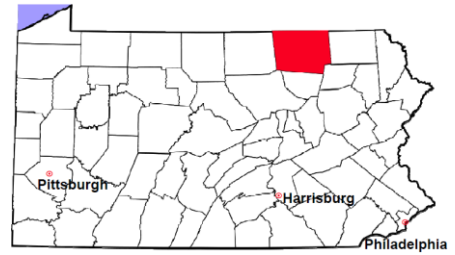


Bradford County

2012 Population Estimate: 62,792

Class of County: 6th

No. of Common Pleas Court Judgeships: 2



2012 Criminal	No. of Cases
---------------	--------------

Cases Pending 1/1/2012	306
New Cases Filed in 2012	889
Reopened Cases	54
Cases Available for Disposition	1,249
Disposed by:	
Withdrawn/Dismissed	45 4.7%
ARD	210 22.1%
Guilty Plea	591 62.1%
Non-Jury Trial	12 1.3%
Jury Trial	16 1.7%
Inactive	27 2.8%
Other	50 5.3%
Total Cases Disposed	951 100.0%
Cases Pending 12/31/2012	298
Cases Awaiting Sentencing	86

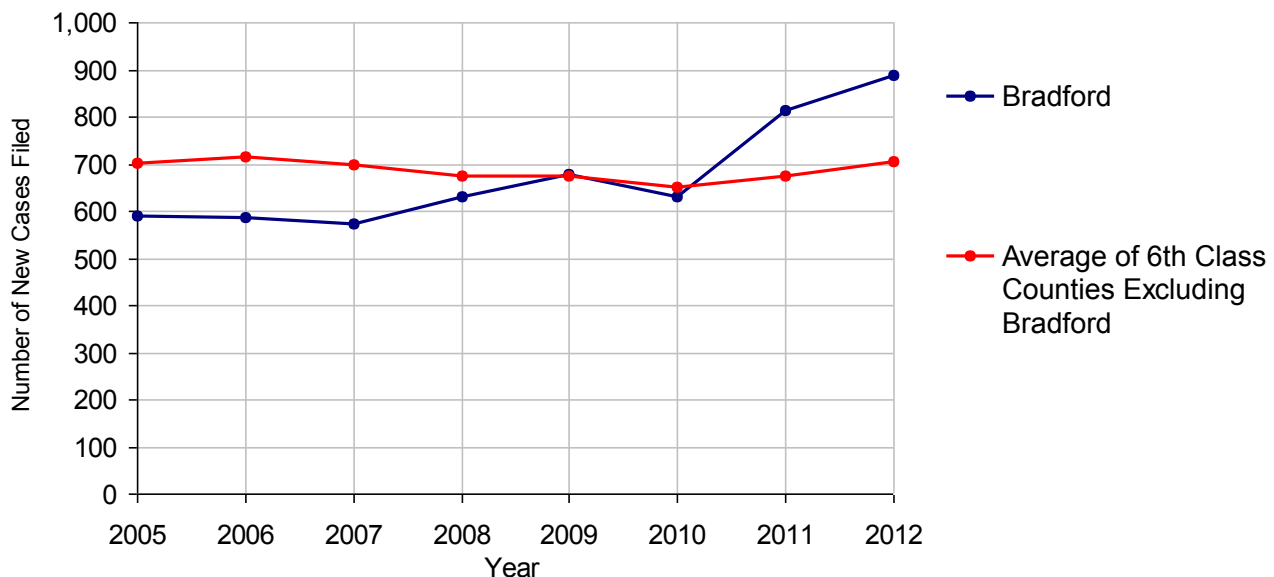


Age of Pending Cases as of 12/31/2012

0-60 Days	160	53.7%
61-120 Days	89	29.9%
121-180 Days	37	12.4%
181-240 Days	6	2.0%
241-300 Days	3	1.0%
301-360 Days	2	0.7%
Over 360 Days	1	0.3%
Total	298	100.0%

Data provided by CPCMS

Criminal New Cases Filed, 2005-2012

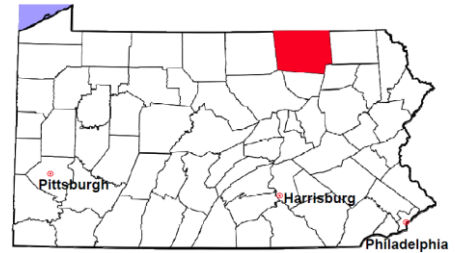


Bradford County

2012 Population Estimate: 62,792

Class of County: 6th

No. of Common Pleas Court Judgeships: 2



2012 Criminal - New Cases by Case Type

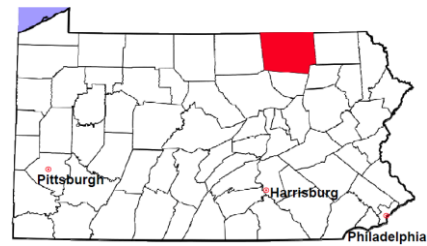


Case Type	Felony	Misdemeanor	Summary /Ungraded	Total
Person	76	45	0	121
Property	156	96	1	253
Drug	65	44	0	109
Weapon	8	3	0	11
Public Order	27	53	0	80
Motor Vehicle - DWI/DUI	0	312	0	312
Motor Vehicle - Other	0	2	0	2
Other	1	0	0	1
Total	333	555	1	889
	37.5%	62.4%	0.1%	100.0%

Data provided by CPCMS

Bradford County

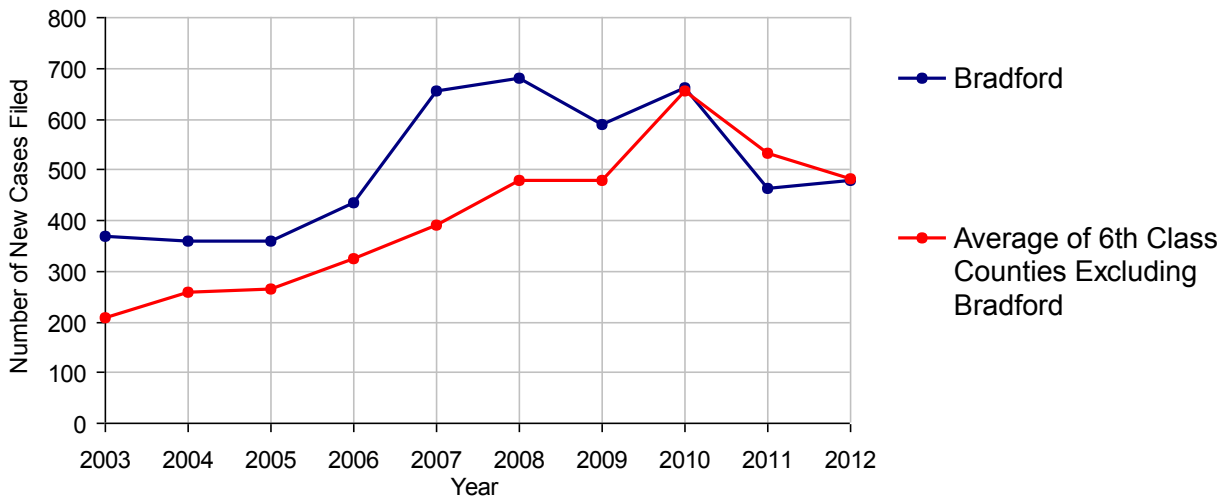
2012 Population Estimate: 62,792
 Class of County: 6th
 No. of Common Pleas Court Judgeships: 2



2012 Civil	Civil Action	Other	Total
Cases Pending 1/1/2012	471	236	707
Docketed Cases	301	179	480
Arbitration Appeals	1	0	1
Transferred In	2	0	2
Returned to Active	6	0	6
Cases Available for Processing	781	415	1,196
Disposed By:			
Default Judgments	153	80	233
Cases Decided by Arbitration Board	7	4	11
Dispositive Motions	13	46	59
Settlements	105	66	171
Moved to Inactive Status	3	2	5
Transferred/Withdrawn	18	8	26
Administrative Purge	96	8	104
Other	0	0	0
Jury Trial	1	1	2
Non-Jury Trial	6	1	7
Total Cases Disposed	402	216	618
Cases Pending 12/31/2012	379	199	578

Age of Pending Cases as of 12/31/2012 (Civil Action Only)		
0-6 months	120	31.7%
7-12 months	68	17.9%
13-18 months	43	11.3%
19-24 months	35	9.2%
25-30 months	39	10.3%
31-36 months	23	6.1%
37-42 months	19	5.0%
43-48 months	11	2.9%
49-54 months	6	1.6%
55-60 months	3	0.8%
61-66 months	5	1.3%
67-72 months	2	0.5%
Over 72 months	5	1.3%
Total	379	100.0%

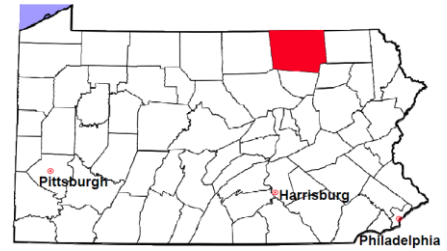
Docketed Cases, 2003-2012



Note: Prior to June 2010, docketed cases under the "Other" category were not reported. The inclusion of these cases starting from June 2010 may contribute to an increase in docketed cases from 2009 to 2010.

Bradford County

2012 Population Estimate: 62,792
 Class of County: 6th
 No. of Common Pleas Court Judgeships: 2



2012 Civil - Docketed Cases Listed by Case Type

TORT	68	14.2%
<i>(does not include mass tort)</i>		
Intentional	4	
Malicious Prosecution	0	
Motor Vehicle	39	
Nuisance	1	
Premise Liability	9	
Product Liability	0	
Slander/Libel/Defamation	1	
Other	14	
MASS TORT	0	
Asbestos	0	
Tobacco	0	
Toxic Tort - DES	0	
Toxic Tort - Implant	0	
Toxic Waste	0	
Other	0	
PROFESSIONAL LIABILITY	8	1.7%
Dental	0	
Legal	2	
Medical Malpractice	5	
Other	1	
CONTRACT	219	45.6%
<i>(does not include judgments)</i>		
Buyer Plaintiff	7	
Debt Collection: Credit Card	96	
Debt Collection: Other	104	
Employment Dispute:		
Employment Dispute: Discriminatio	0	
Employment Dispute: Other	0	
Other	12	

REAL PROPERTY	93	19.4%
Ejectment*	5	
Eminent Domain/Condemnation	0	
Ground Rent	0	
Landlord/Tenant Dispute	6	
Mortgage Foreclosure:		
Residential*	65	
Commercial*	2	
Partition of Real Property*	3	
Quiet Title*	12	
Other*	0	
CIVIL APPEALS	50	10.4%
<i>- Administrative Agencies</i>		
Board of Assessment*	1	
Board of Elections*	0	
Dept. of Transportation*	18	
Zoning Board*	1	
Statutory Appeal - Other*	0	
Other*	30	
MISCELLANEOUS	42	8.8%
Common Law/		
Statutory Arbitration*	0	
Declaratory Judgment*	8	
Mandamus*	3	
Non-Domestic Relations		
Restraining Order*	0	
Quo Warranto*	0	
Replevin*	6	
Other*	25	
TOTAL DOCKETED CASES:	480	100%

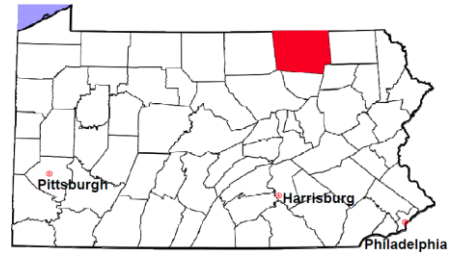
Of the Docketed Cases:

Pro Se Filings: 13 2.7% Class Action Suits: 0 MDJ Appeals: 35 7.3%

* Civil Other

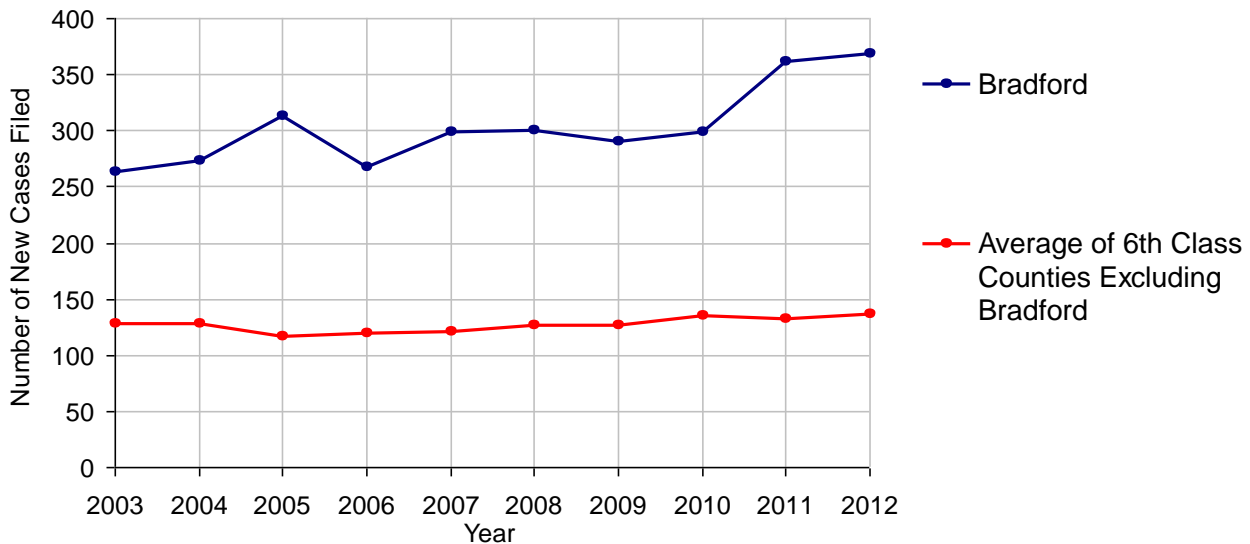
Bradford County

2012 Population Estimate: 62,792
 Class of County: 6th
 No. of Common Pleas Court Judgeships: 2



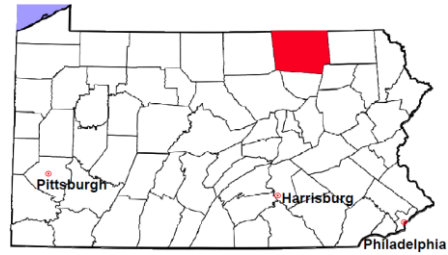
2012 Protection From Abuse	No. of Petitions
Cases Pending 1/1/2012	23
New Cases Filed in 2012	369
<i>Of these, Petitions Requesting Temporary Orders: 369 (100.0%)</i>	
<i>Temporary Orders DENIED: 69 (18.7%), Temporary Orders GRANTED: 300 (81.3%)</i>	
Cases Available for Processing	392
Processed By:	
Temporary Order DENIED After Ex Parte Hearing and No Evidentiary Hearing Scheduled	65 18.3%
Temporary Order DISMISSED After Evidentiary Hearing and No Final Order Entered	0
Final Order DENIED After Evidentiary Hearing Before a Judge	13 3.7%
Final Order GRANTED After Evidentiary Hearing Before a Judge	64 18.0%
Plaintiff Did Not Appear For Evidentiary Hearing	82 23.0%
Final Order by STIPULATION OR AGREEMENT Between the Parties	29 8.1%
Petition WITHDRAWN by Plaintiff	102 28.7%
TRANSFERRED to Another Jurisdiction	1 0.3%
DECEASED Party	0
Other	0
Cases Processed	356 100.0%
Cases Pending 12/31/2012	36

PFA New Cases Filed, 2003-2012



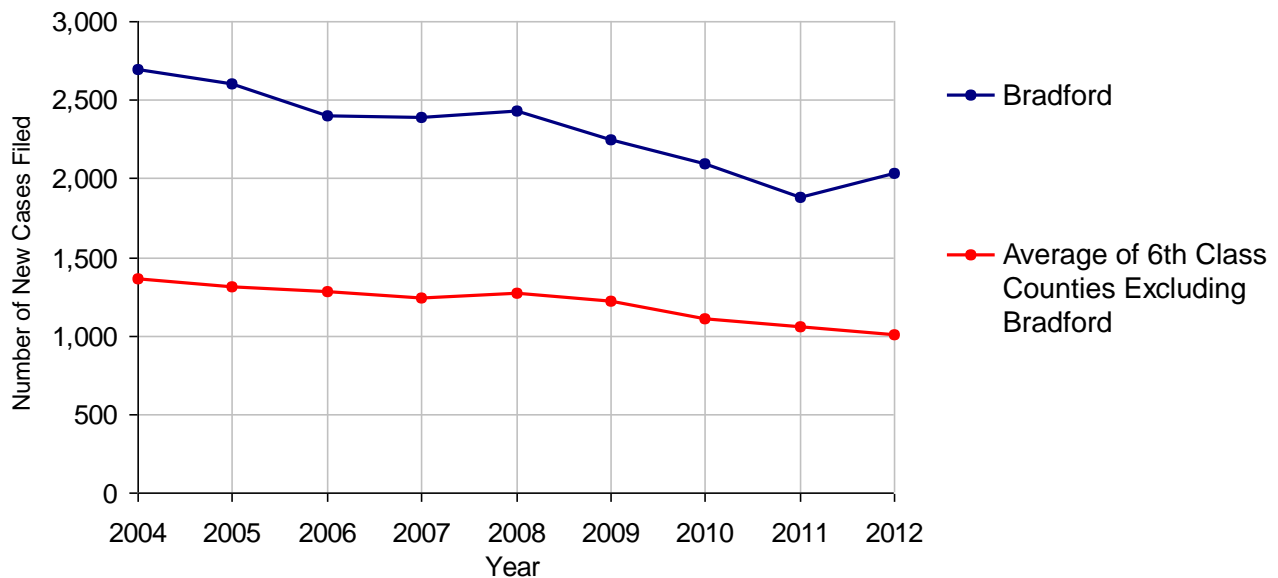
Bradford County

2012 Population Estimate: 62,792
 Class of County: 6th
 No. of Common Pleas Court Judgeships: 2



2012 Spousal & Child Support	No. of Petitions	
Cases Pending 1/1/2012	257	
New Cases Filed in 2012	2,037	
Dockets Transferred In (+)	10	
Dockets Transferred Out (-)	13	
Cases Available for Processing	2,291	
Processed By:		
Judge	145	7.5%
Intake Officer	1,307	67.4%
Hearing Officer	487	25.1%
Other	0	
Cases Processed	1,939	100.0%
Cases Pending 12/31/2012	352	

Spousal & Child Support New Cases Filed, 2004-2012

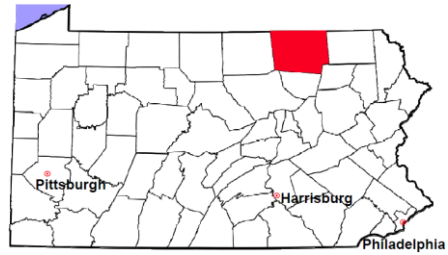


Bradford County

2012 Population Estimate: 62,792

Class of County: 6th

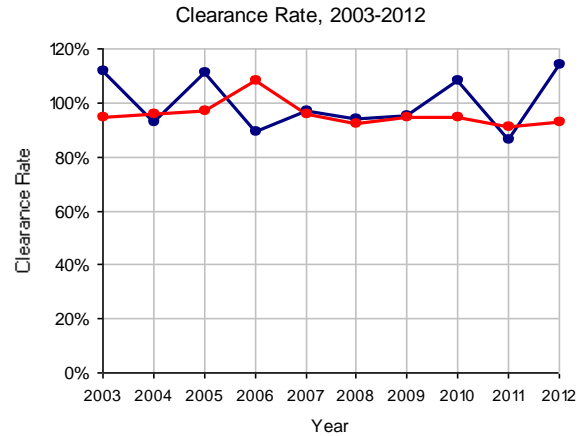
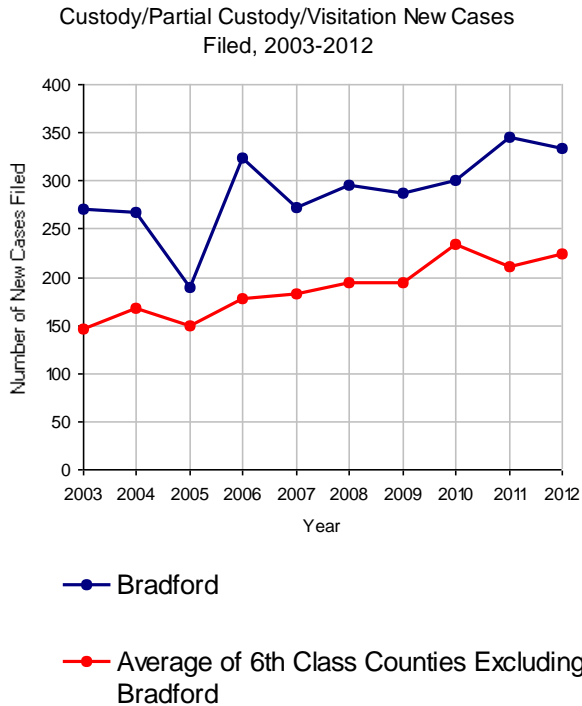
No. of Common Pleas Court Judgeships: 2



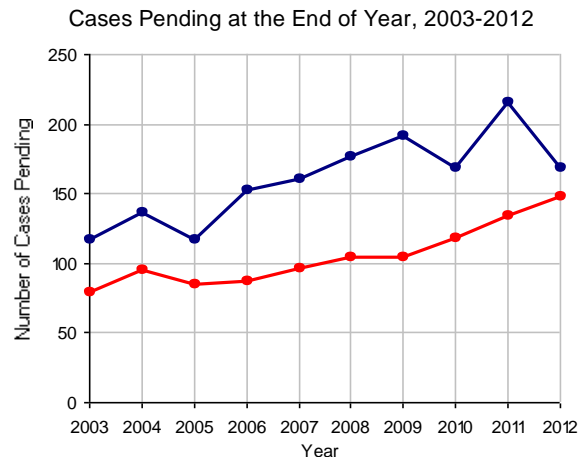
2012 Custody/Partial Custody/Visitation

No. of Petitions

Cases Pending 1/1/2012	216
New Cases Filed in 2012	334
Cases Available for Processing	550
Processed By:	
Judge	65 17.1%
Non-Judicial Officer	50 13.1%
Other	266 69.8%
Cases Processed	381 100.0%
Cases Pending 12/31/2012	169

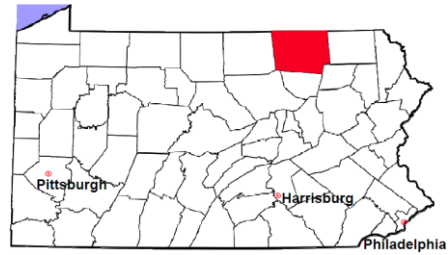


Note: Clearance Rate = Cases Processed / New Cases Filed



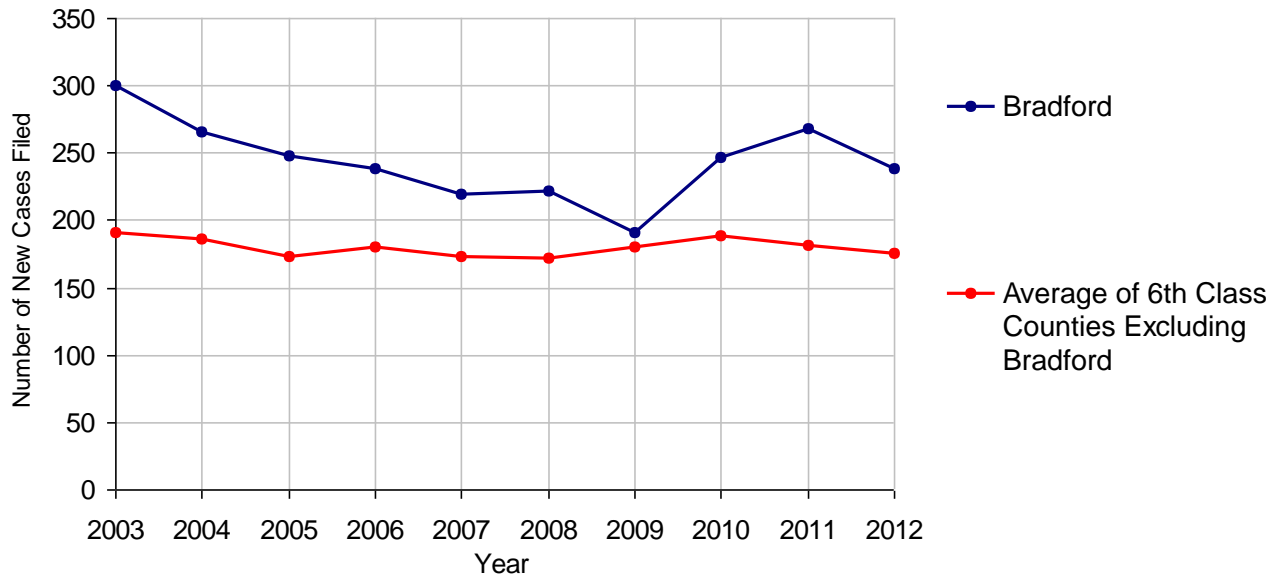
Bradford County

2012 Population Estimate: 62,792
 Class of County: 6th
 No. of Common Pleas Court Judgeships: 2



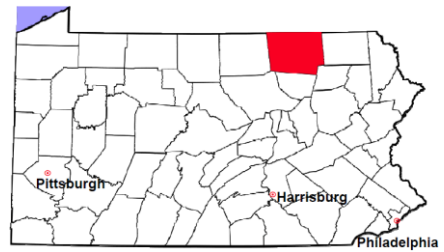
2012 Divorce	No. of Petitions	
Cases Pending 1/1/2012	326	
New Cases Filed in 2012	239	
Cases Available for Processing	565	
Processed By:		
Contested Before a Judge	0	
Contested Before a Master	2	0.8%
Uncontested	227	86.0%
Other	35	13.3%
Cases Processed	264	100.0%
Cases Pending 12/31/2012	301	

Divorce New Cases Filed, 2003-2012



Bradford County

2012 Population Estimate: 62,792
 Class of County: 6th
 No. of Common Pleas Court Judgeships: 2



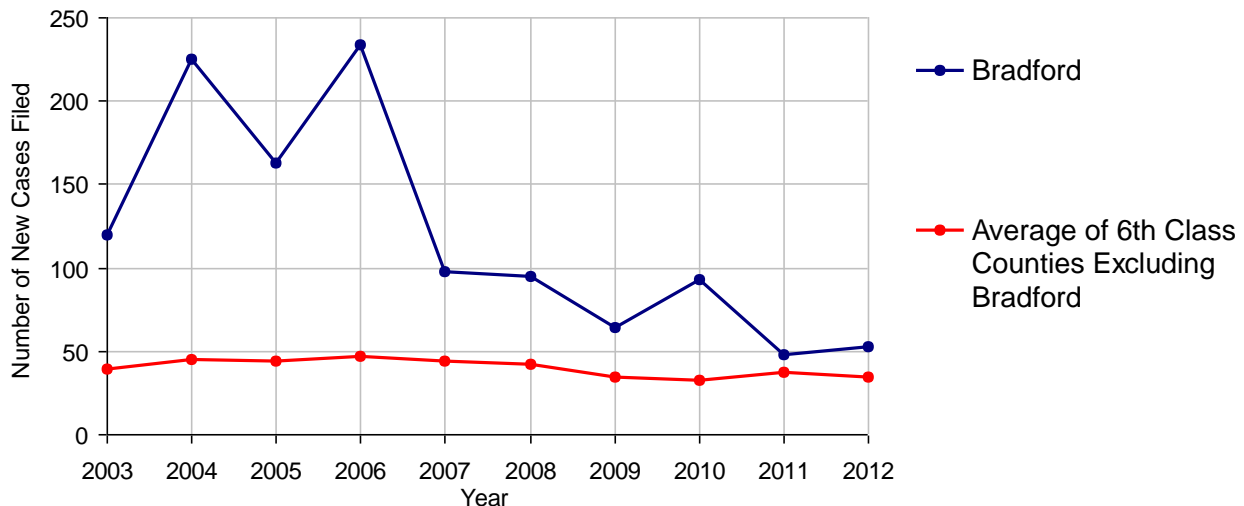
2012 Juvenile Dependency - Active Dependent Inventory



	Abuse/ Neglect	Status Offenses	Total
Cases Pending 1/1/2012	8	0	8
New Petitions Filed in 2012	53	0	53
Other	5	0	5
Total Petitions Available for Processing	66	0	66
Processed by:			
Adjudicated Dependent			
Judge	4	0	4
Master	35	0	35
Adjudicated NOT Dependent			
Judge	0	0	0
Master	8	0	8
Withdrawn/Dismissed/Inactive	2	0	2
Other	10	0	10
Total Petitions Processed	59	0	59
Cases Pending 12/31/2012	7	0	7

Data provided by CPCMS

Abuse/Neglect and Status Offenses New Cases Filed, 2003-2012



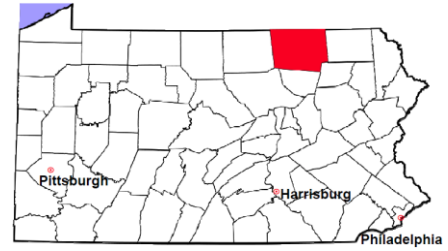
Note: Dependency data for 2002-2010 were collected manually. Dependency data for 2011 and 2012 were provided by CPCMS.

Bradford County

2012 Population Estimate: 62,792

Class of County: 6th

No. of Common Pleas Court Judgeships: 2



2012 Juvenile Dependency - Adjudicated Dependent Inventory



	Abuse/ Neglect	Status Offenses	Total
Cases Pending 1/1/2012	105	9	114
New Adjudicated Dependent Cases	39	0	39
Other	7	0	7
Total Adjudicated Dependent Cases	151	9	160
<u>Court Supervision Terminated:</u>			
Family Reunification	6 9.8%	0	6 9.4%
Adoption	18 29.5%	1 33.3%	19 29.7%
Placement with a Relative/Guardian	19 31.1%	0	19 29.7%
Aged Out	8 13.1%	2 66.7%	10 15.6%
Other Permanency Outcomes*	1 1.6%	0	1 1.6%
Other**	9 14.8%	0	9 14.1%
Total Adjudicated Dependent Cases Terminated	61 100.0%	3 100.0%	64 100.0%
Cases Pending 12/31/2012	90	6	96

Data provided by CPCMS

* Other Permanency Outcomes include: adjudicated delinquent, death due to natural causes, death due to negligence, emancipation, permanent living arrangement, and parent has come forward.

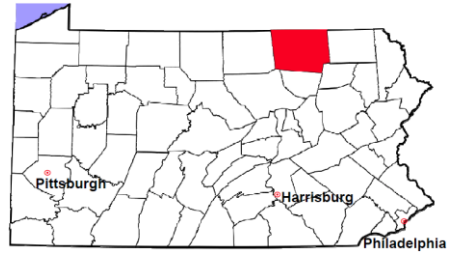
** Other includes cases where court supervision is terminated due to transfer out of jurisdiction, withdrawal and administrative closure.

Bradford County

2012 Population Estimate: 62,792

Class of County: 6th

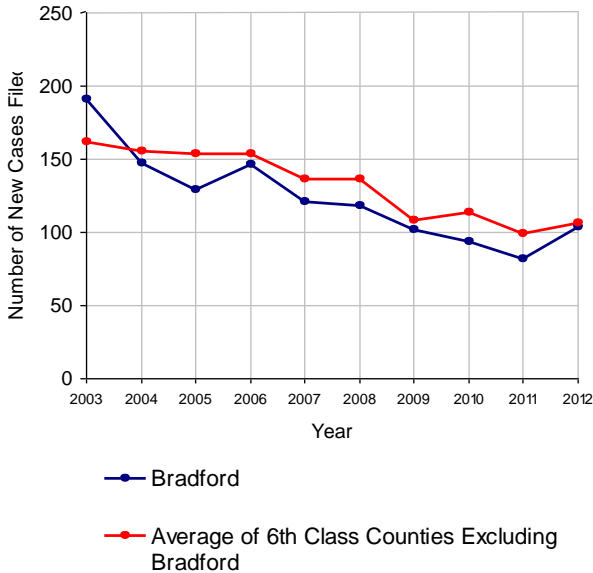
No. of Common Pleas Court Judgeships: 2



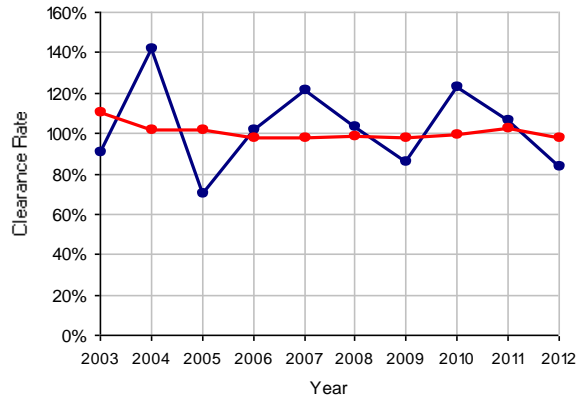
2012 Juvenile Delinquency

	No. of Cases
Cases Pending 1/1/2012	11
New Cases Filed in 2012	104
Cases Available for Processing	115
Processed By:	
Judge	12 13.8%
Non-Judicial Officer	74 85.1%
Other	1 1.1%
Cases Processed	87 100.0%
Cases Pending 12/31/2012	28

Juvenile Delinquency New Cases Filed, 2003-2012

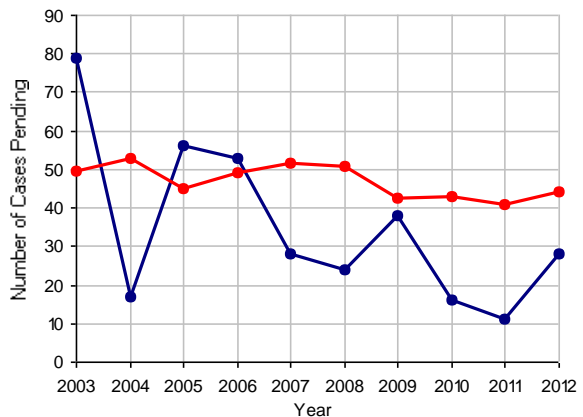


Clearance Rate, 2003-2012



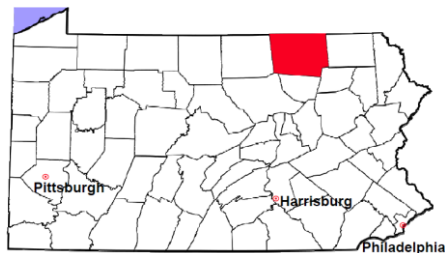
Note: Clearance Rate = Cases Processed / New Cases Filed

Cases Pending at the End of Year, 2003-2012



Bradford County

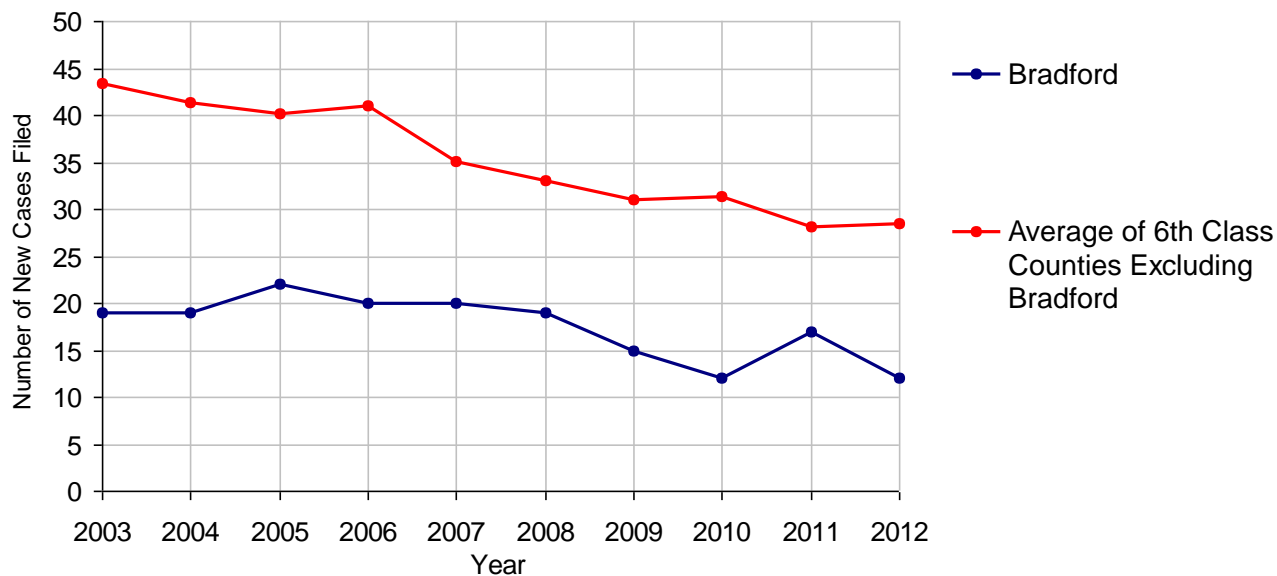
2012 Population Estimate: 62,792
 Class of County: 6th
 No. of Common Pleas Court Judgeships: 2



2012 Accounts

	No. of Cases	
Cases Pending 1/1/2012	3	
New Cases Filed in 2012	12	
Cases Available for Processing	15	
Processed By:		
Contested before a Judge	0	
Contested before a Non-judicial Officer	0	
Uncontested	12	100.0%
Other	0	
Cases Processed	12	100.0%
Cases Pending 12/31/2012	3	

Accounts New Cases Filed, 2003-2012

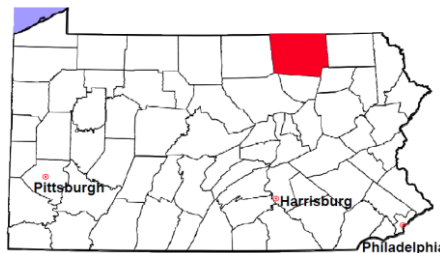


Bradford County

2012 Population Estimate: 62,792

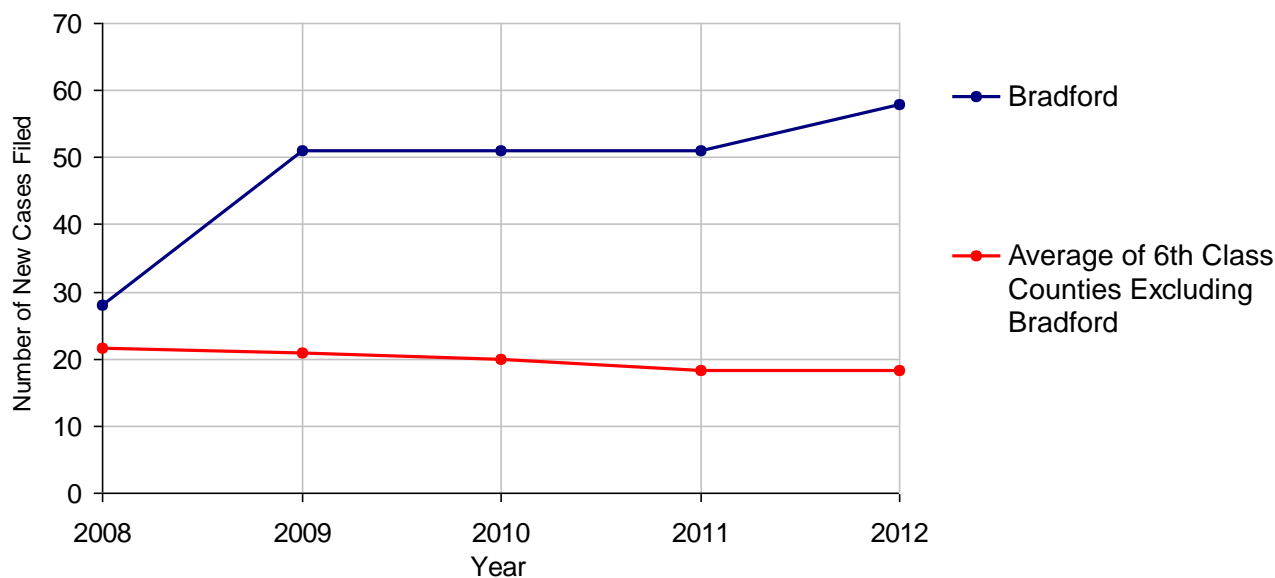
Class of County: 6th

No. of Common Pleas Court Judgeships: 2



2012 Adoptions		No. of Cases	
Cases Pending 1/1/2012		0	
New Cases Filed in 2012		58	
Cases Available for Processing		58	
Processed By:			
Contested before a Judge	Granted	0	
	Denied	0	
Uncontested	Granted	54	100.0%
	Denied	0	
Other		0	
Cases Processed		54	100.0%
Cases Pending 12/31/2012		4	

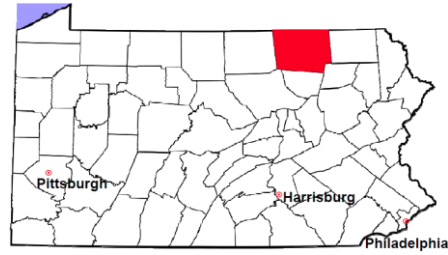
Adoptions New Cases Filed, 2008-2012



Note: Prior to 2008, each petition was counted as one new case, regardless of the number of children listed on the petition. Starting in 2008, each child listed on a petition is counted as a separate case. Therefore, statistics since 2008 should not be compared to statistics prior to 2008.

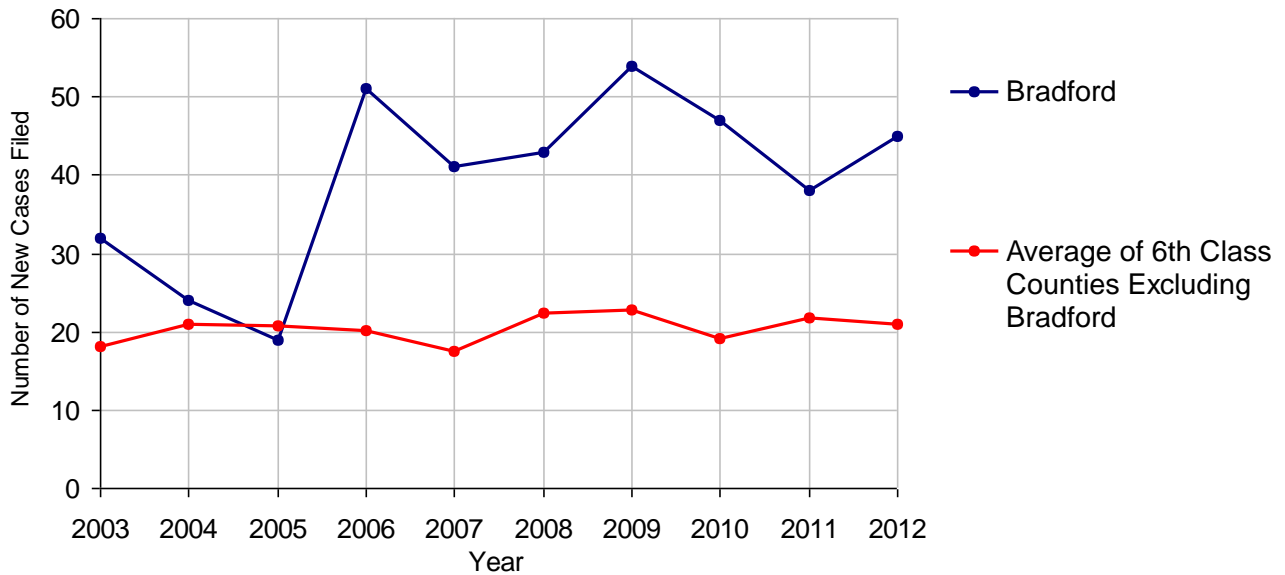
Bradford County

2012 Population Estimate: 62,792
 Class of County: 6th
 No. of Common Pleas Court Judgeships: 2



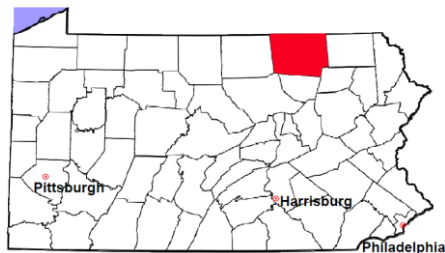
2012 Relinquishments/Terminations	No. of Cases	
Cases Pending 1/1/2012	9	
New Cases Filed in 2012	45	
Cases Available for Processing	54	
Processed By:		
Contested before a Judge	8	18.2%
Uncontested	36	81.8%
Other	0	
Cases Processed	44	100.0%
Cases Pending 12/31/2012	10	

Relinquishments/Terminations New Cases Filed, 2003-2012



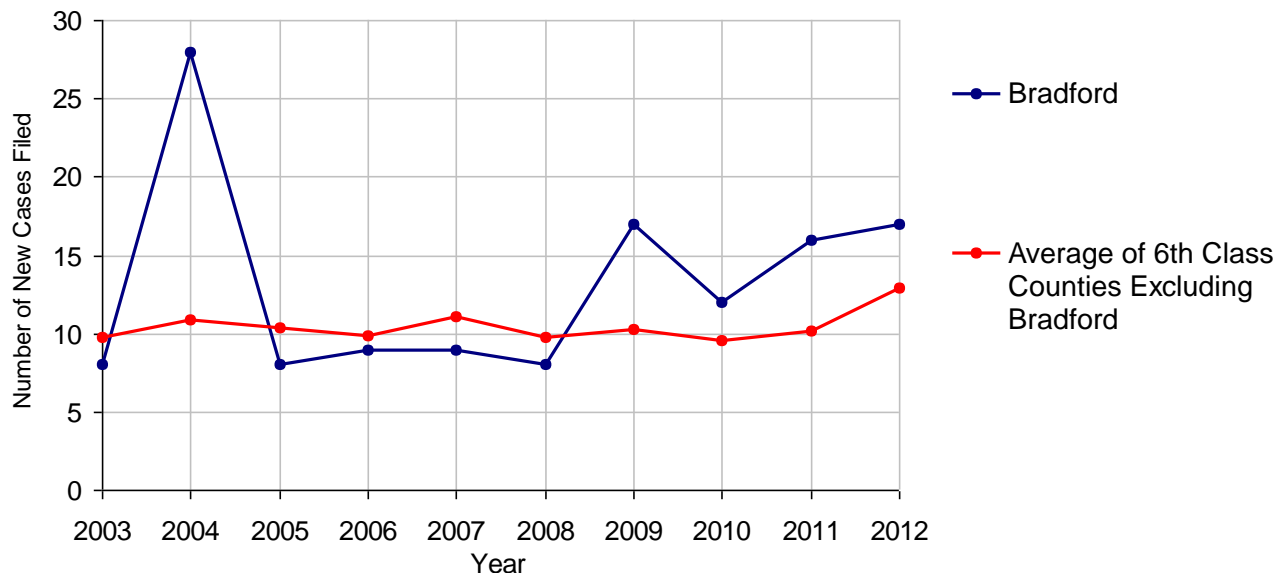
Bradford County

2012 Population Estimate: 62,792
 Class of County: 6th
 No. of Common Pleas Court Judgeships: 2



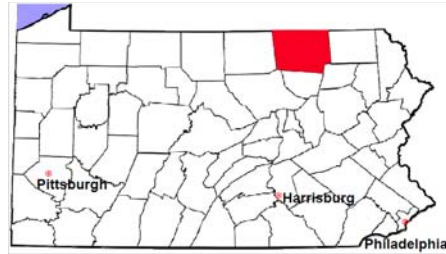
2012 Appointment of Guardians		No. of Cases
Cases Pending 1/1/2012		1
New Cases Filed in 2012		17
Cases Available for Processing		18
Processed By:		
Contested before a Judge		0
Uncontested	14	82.4%
Other	3	17.6%
Cases Processed	17	100.0%
Cases Pending 12/31/2012		1

Appointment of Guardians New Cases Filed, 2003-2012



Bradford County

2012 Population Estimate: 62,792
 Class of County: 6th
 No. of Common Pleas Court Judgeships: 2



2012 Jury Yield and Utilization

Jury Yield

Qualification Questionnaires/Summonses Mailed:	2,225	A		
Returned Undeliverable:	214	B	9.6%	Of Qualification Questionnaires/Summonses Mailed
Not Responded to:	132	C	5.9%	
the Number of Prospective Jurors:				
Disqualified:	187	D	8.4%	
Exempted:	15	E	0.7%	
Excused:	248	F	11.1%	
Deferred to New Term:	303	G	13.6%	
Deferred from Previous Term:	378	H	17.0%	
Total Number of Qualified Jurors Available for Service:	1,504	I	67.6%	

$I = A - B - C - D - E - F - G + H$

Jury Utilization

the Number of Jurors:			
Reporting for Service:	964	64.1%	Of Jurors Qualified and Available
Told Not to Report for Service:	0		
Sent to Courtroom for Jury Selection (Voir Dire):	907	94.1%	Of Jurors Reporting for Service
Impanelled or Sworn (jurors/alternates):	262	27.2%	
Removed for Cause/Hardship:	62		
Removed by Peremptory Challenge:	240		

Jury Costs

Total Annual Budget for Juror Operations:	\$107,080.00	J
Average Cost Per Juror:	\$48.13	K

$K = J/A$

In mid-2011, AOPC began utilizing the National Center for State Courts' Jury Managers' Toolbox for collecting jury data. In 2012, the counties began providing additional jury data which included information about the summoning practices in the counties. With this additional data, we can now see not only how many citizens come to our courthouses every day in anticipation of serving on a jury, but the number of citizens actually summonsed and the number of those summonsed who are exempt, excused or disqualified from service. With this wider view of the jury process, we can determine the efficiency with which our courts operate, and with the assistance of the Jury Managers' Toolbox find guidance in streamlining the jury summoning practices.