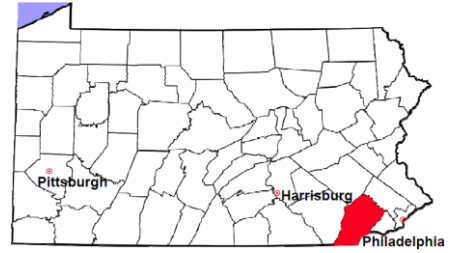


Chester County

2012 Population Estimate: 506,575
 Class of County: 3rd
 No. of Common Pleas Court Judgeships: 13

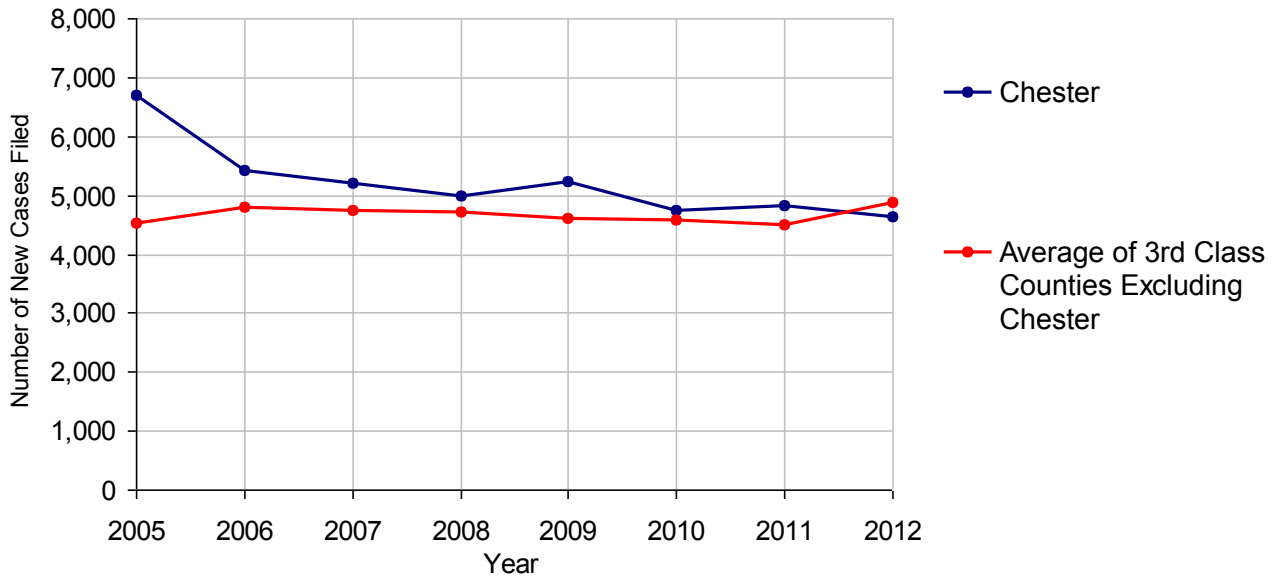


2012 Criminal	No. of Cases	
Cases Pending 1/1/2012	1,566	
New Cases Filed in 2012	4,639	
Reopened Cases	305	
Cases Available for Disposition	6,510	
Disposed by:		
Withdrawn/Dismissed	145	2.9%
ARD	1,175	23.6%
Guilty Plea	3,350	67.4%
Non-Jury Trial	39	0.8%
Jury Trial	39	0.8%
Inactive	148	3.0%
Other	76	1.5%
Total Cases Disposed	4,972	100.0%
Cases Pending 12/31/2012	1,538	
Cases Awaiting Sentencing	90	

Age of Pending Cases as of 12/31/2012		
0-60 Days	691	44.9%
61-120 Days	440	28.6%
121-180 Days	208	13.5%
181-240 Days	85	5.5%
241-300 Days	34	2.2%
301-360 Days	26	1.7%
Over 360 Days	54	3.5%
Total	1,538	100.0%

Data provided by CPCMS

Criminal New Cases Filed, 2005-2012

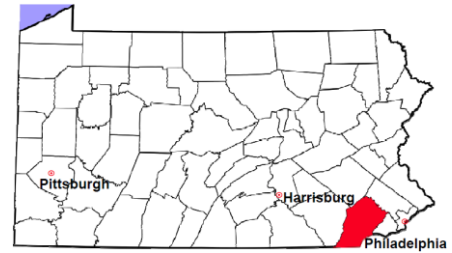


Chester County

2012 Population Estimate: 506,575

Class of County: 3rd

No. of Common Pleas Court Judgeships: 13



2012 Criminal - New Cases by Case Type



Case Type	Felony	Misdemeanor	Summary /Ungraded	Total
Person	397	360	2	759
Property	651	338	8	997
Drug	255	395	0	650
Weapon	33	23	0	56
Public Order	101	156	3	260
Motor Vehicle - DWI/DUI	0	1,892	1	1,893
Motor Vehicle - Other	1	20	2	23
Other	0	1	0	1
Total	1,438	3,185	16	4,639
	31.0%	68.7%	0.3%	100.0%

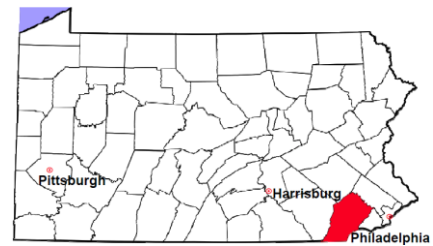
Data provided by CPCMS

Chester County

2012 Population Estimate: 506,575

Class of County: 3rd

No. of Common Pleas Court Judgeships: 13

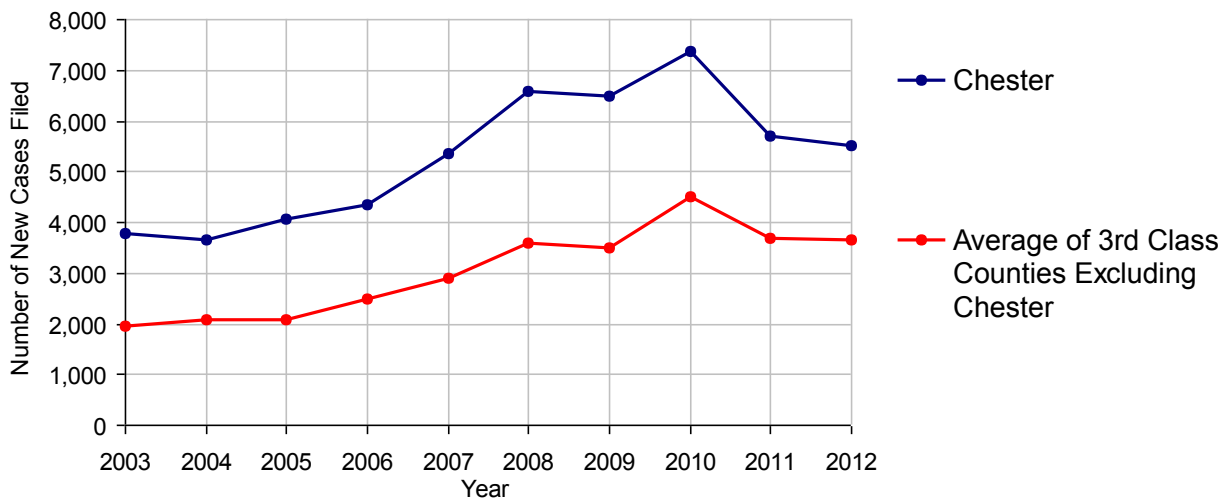


2012 Civil	Civil Action	Other	Total
Cases Pending 1/1/2012	3,240	1,639	4,879
Docketed Cases	3,058	2,441	5,499
Arbitration Appeals	87	25	112
Transferred In	31	0	31
Returned to Active	26	39	65
Cases Available for Processing	6,442	4,144	10,586
Disposed By:			
Default Judgments	1,239	1,018	2,257
Cases Decided by Arbitration Board	310	112	422
Dispositive Motions	622	378	1,000
Settlements	1,015	480	1,495
Moved to Inactive Status	68	56	124
Transferred/Withdrawn	214	95	309
Administrative Purge	74	27	101
Other	38	31	69
Jury Trial	42	16	58
Non-Jury Trial	27	7	34
Total Cases Disposed	3,649	2,220	5,869
Cases Pending 12/31/2012	2,793	1,924	4,717

Age of Pending Cases as of 12/31/2012 (Civil Action Only)

0-6 months	1,173	42.0%
7-12 months	478	17.1%
13-18 months	242	8.7%
19-24 months	143	5.1%
25-30 months	120	4.3%
31-36 months	77	2.8%
37-42 months	68	2.4%
43-48 months	76	2.7%
49-54 months	183	6.6%
55-60 months	130	4.7%
61-66 months	33	1.2%
67-72 months	15	0.5%
Over 72 months	55	2.0%
Total	2,793	100.0%

Docketed Cases, 2003-2012



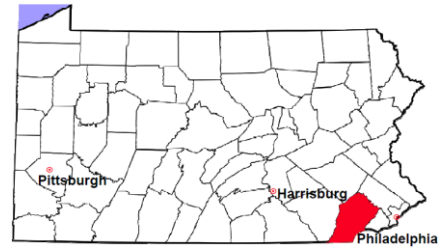
Note: Prior to June 2010, docketed cases under the "Other" category were not reported. The inclusion of these cases starting from June 2010 may contribute to an increase in docketed cases from 2009 to 2010.

Chester County

2012 Population Estimate: 506,575

Class of County: 3rd

No. of Common Pleas Court Judgeships: 13



2012 Civil - Docketed Cases Listed by Case Type

TORT 751 13.7%

(does not include mass tort)

Intentional	23
Malicious Prosecution	2
Motor Vehicle	434
Nuisance	6
Premise Liability	133
Product Liability	10
Slander/Libel/Defamation	11
Other	132

MASS TORT 0

Asbestos	0
Tobacco	0
Toxic Tort - DES	0
Toxic Tort - Implant	0
Toxic Waste	0
Other	0

PROFESSIONAL LIABILITY 58 1.1%

Dental	5
Legal	11
Medical Malpractice	37
Other	5

CONTRACT 2,237 40.7%

(does not include judgments)

Buyer Plaintiff	34
Debt Collection: Credit Card	1,066
Debt Collection: Other	795
Employment Dispute:	
Employment Dispute: Discriminatio	6
Employment Dispute: Other	25
Other	311

REAL PROPERTY 1,410 25.6%

Ejectment*	111
Eminent Domain/Condemnation	5
Ground Rent	0
Landlord/Tenant Dispute	12
Mortgage Foreclosure:	
Residential*	1,197
Commercial*	15
Partition of Real Property*	8
Quiet Title*	24
Other*	38

CIVIL APPEALS 806 14.7%

- Administrative Agencies

Board of Assessment*	148
Board of Elections*	1
Dept. of Transportation*	153
Zoning Board*	37
Statutory Appeal - Other*	14
Other*	453

MISCELLANEOUS 237 4.3%

Common Law/	
Statutory Arbitration*	4
Declaratory Judgment*	25
Mandamus*	2
Non-Domestic Relations	
Restraining Order*	0
Quo Warranto*	1
Replevin*	29
Other*	176

TOTAL DOCKETED CASES: 5,499 100%

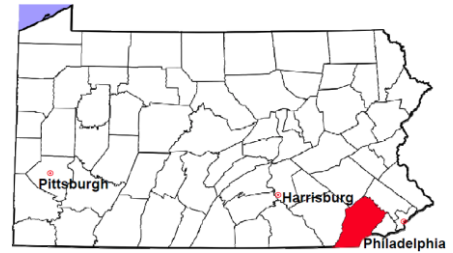
Of the Docketed Cases:

Pro Se Filings:	189	3.4%	Class Action Suits:	5	0.1%	MDJ Appeals:	453	8.2%
-----------------	-----	------	---------------------	---	------	--------------	-----	------

* Civil Other

Chester County

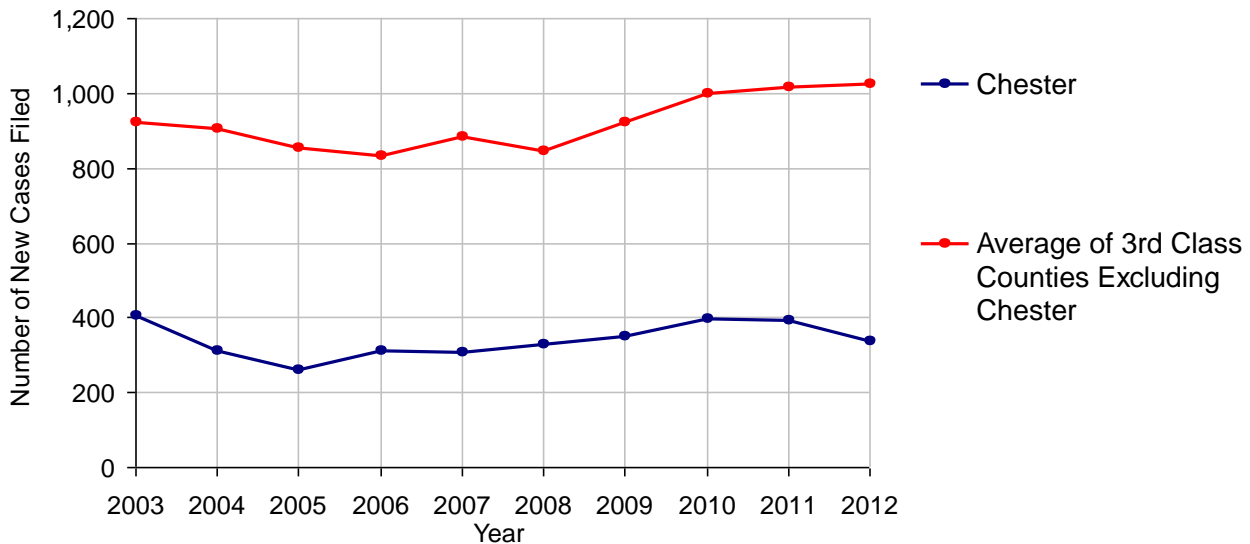
2012 Population Estimate: 506,575
 Class of County: 3rd
 No. of Common Pleas Court Judgeships: 13



2012 Protection From Abuse

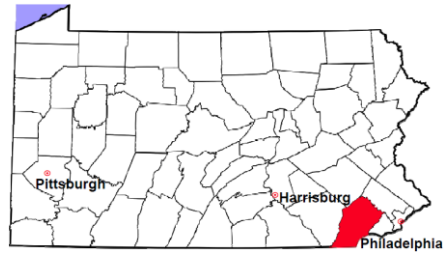
	No. of Petitions
Cases Pending 1/1/2012	26
New Cases Filed in 2012	337
<i>Of these, Petitions Requesting Temporary Orders: 337 (100.0%)</i>	
<i>Temporary Orders DENIED: 21 (6.2%), Temporary Orders GRANTED: 316 (93.8%)</i>	
Cases Available for Processing	363
Processed By:	
Temporary Order DENIED After Ex Parte Hearing and No Evidentiary Hearing Scheduled	3 1.0%
Temporary Order DISMISSED After Evidentiary Hearing and No Final Order Entered	28 9.5%
Final Order DENIED After Evidentiary Hearing Before a Judge	14 4.7%
Final Order GRANTED After Evidentiary Hearing Before a Judge	49 16.6%
Plaintiff Did Not Appear For Evidentiary Hearing	8 2.7%
Final Order by STIPULATION OR AGREEMENT Between the Parties	90 30.4%
Petition WITHDRAWN by Plaintiff	104 35.1%
TRANSFERRED to Another Jurisdiction	0
DECEASED Party	0
Other	0
Cases Processed	296 100.0%
Cases Pending 12/31/2012	67

PFA New Cases Filed, 2003-2012



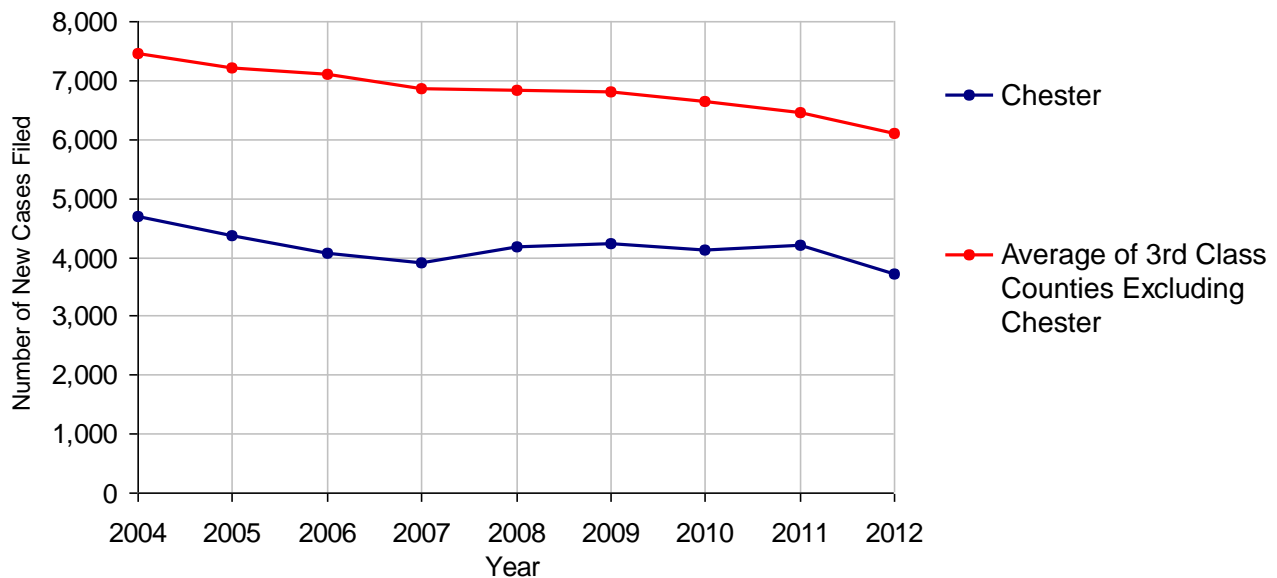
Chester County

2012 Population Estimate: 506,575
 Class of County: 3rd
 No. of Common Pleas Court Judgeships: 13



2012 Spousal & Child Support	No. of Petitions	
Cases Pending 1/1/2012	1,216	
New Cases Filed in 2012	3,722	
Dockets Transferred In (+)	71	
Dockets Transferred Out (-)	101	
Cases Available for Processing	4,908	
Processed By:		
Judge	209	5.6%
Intake Officer	3,356	89.2%
Hearing Officer	195	5.2%
Other	1	<0.1%
Cases Processed	3,761	100.0%
Cases Pending 12/31/2012	1,147	

Spousal & Child Support New Cases Filed, 2004-2012

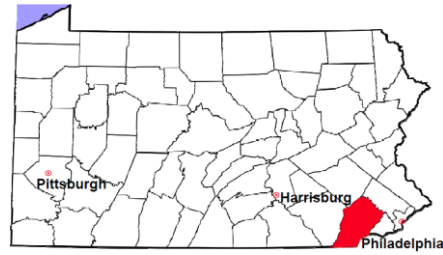


Chester County

2012 Population Estimate: 506,575

Class of County: 3rd

No. of Common Pleas Court Judgeships: 13



2012 Custody/Partial Custody/Visitation

No. of
Petitions

Cases Pending 1/1/2012

1,976

New Cases Filed in 2012

1,132

Cases Available for Processing

3,108

Processed By:

Judge

75

8.1%

Non-Judicial Officer

576

62.0%

Other

278

29.9%

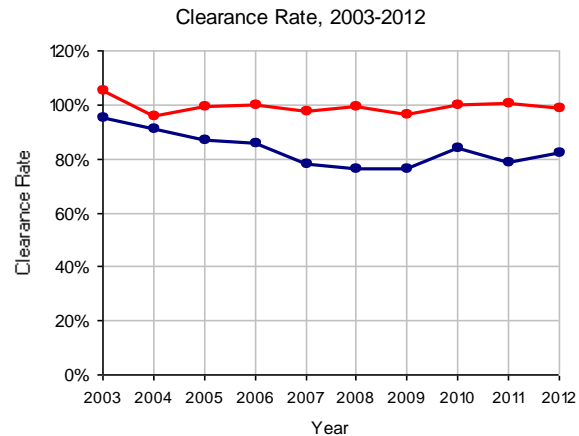
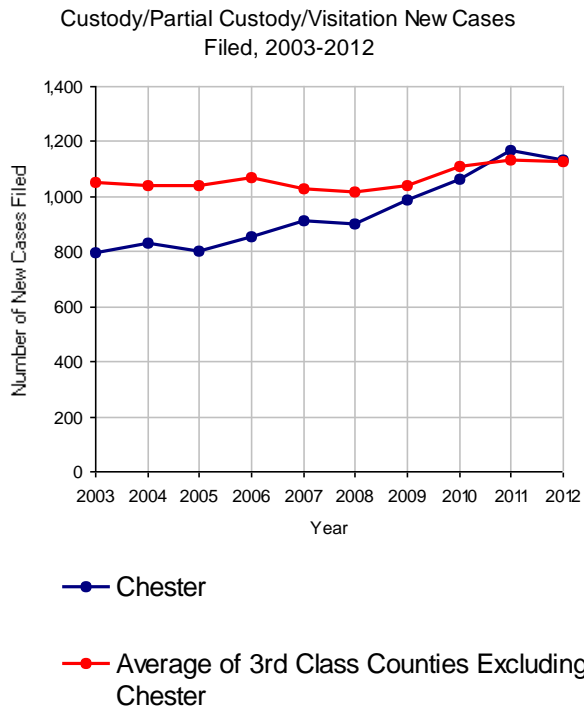
Cases Processed

929

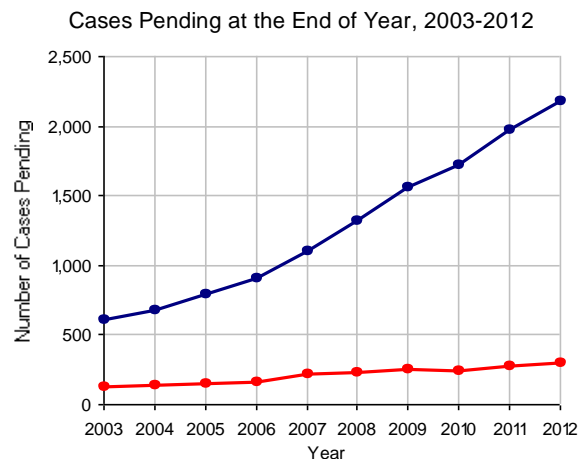
100.0%

Cases Pending 12/31/2012

2,179



Note: Clearance Rate = Cases Processed / New Cases Filed

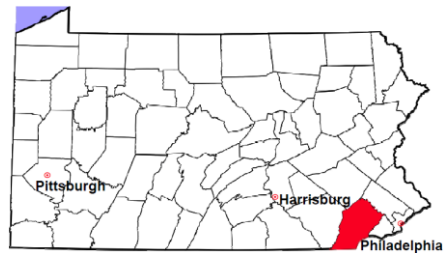


Chester County

2012 Population Estimate: 506,575

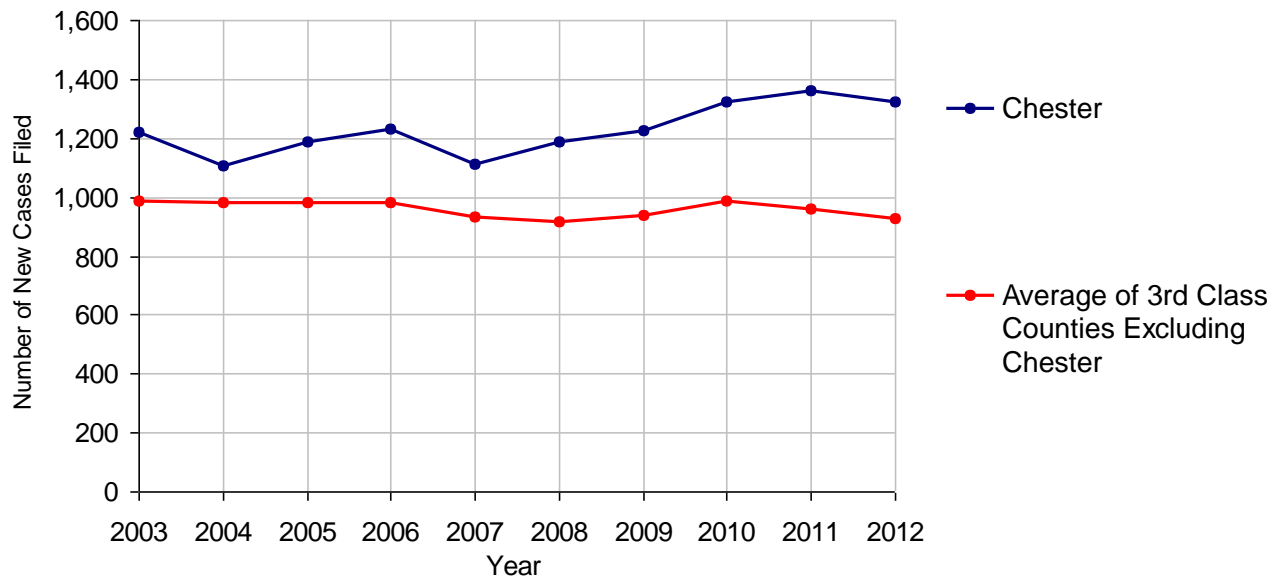
Class of County: 3rd

No. of Common Pleas Court Judgeships: 13



2012 Divorce	No. of Petitions	
Cases Pending 1/1/2012	2,064	
New Cases Filed in 2012	1,322	
Cases Available for Processing	3,386	
Processed By:		
Contested Before a Judge	77	5.4%
Contested Before a Master	194	13.7%
Uncontested	896	63.3%
Other	249	17.6%
Cases Processed	1,416	100.0%
Cases Pending 12/31/2012	1,970	

Divorce New Cases Filed, 2003-2012

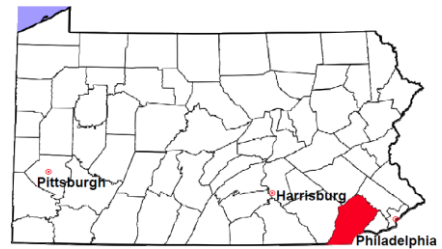


Chester County

2012 Population Estimate: 506,575

Class of County: 3rd

No. of Common Pleas Court Judgeships: 13



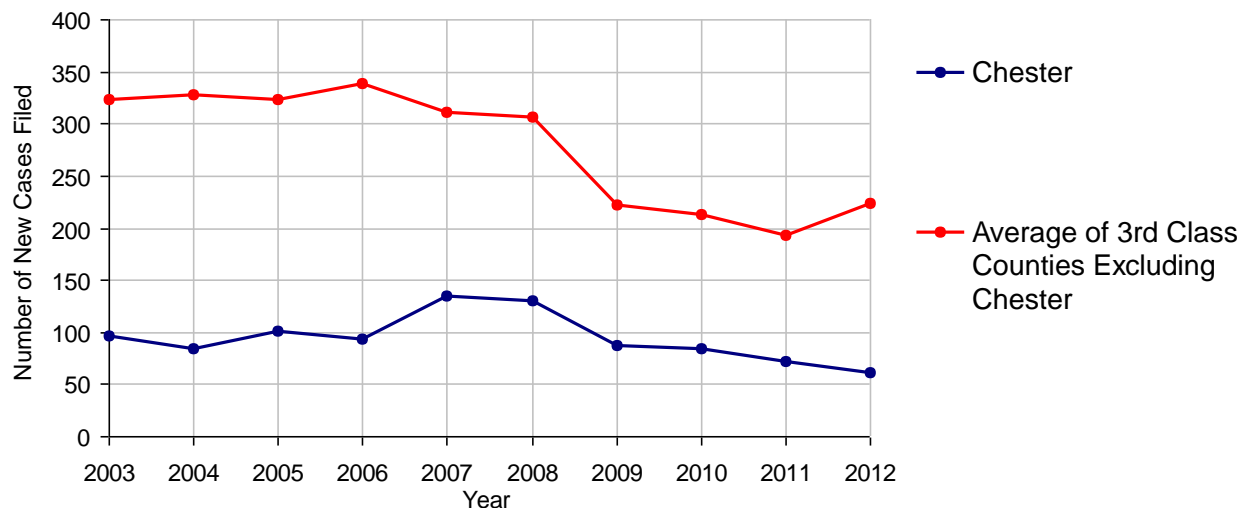
2012 Juvenile Dependency - Active Dependent Inventory



	Abuse/ Neglect	Status Offenses	Total
Cases Pending 1/1/2012	4	0	4
New Petitions Filed in 2012	49	12	61
Other	0	0	0
Total Petitions Available for Processing	53	12	65
Processed by:			
Adjudicated Dependent			
Judge	5	0	5
Master	31	9	40
Adjudicated NOT Dependent			
Judge	1	0	1
Master	2	0	2
Withdrawn/Dismissed/Inactive	1	0	1
Other	6	0	6
Total Petitions Processed	46	9	55
Cases Pending 12/31/2012	7	3	10

Data provided by CPCMS

Abuse/Neglect and Status Offenses New Cases Filed, 2003-2012



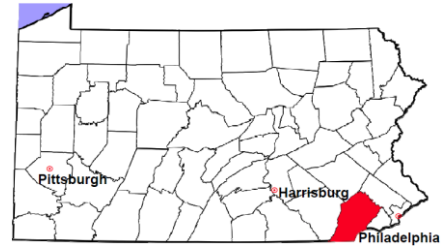
Note: Dependency data for 2002-2010 were collected manually. Dependency data for 2011 and 2012 were provided by CPCMS.

Chester County

2012 Population Estimate: 506,575

Class of County: 3rd

No. of Common Pleas Court Judgeships: 13



2012 Juvenile Dependency - Adjudicated Dependent Inventory



	Abuse/ Neglect	Status Offenses	Total
Cases Pending 1/1/2012	168	18	186
New Adjudicated Dependent Cases	36	9	45
Other	9	0	9
Total Adjudicated Dependent Cases	213	27	240
<u>Court Supervision Terminated:</u>			
Family Reunification	0	1 14.3%	1 1.5%
Adoption	10 17.2%	0	10 15.4%
Placement with a Relative/Guardian	31 53.4%	6 85.7%	37 56.9%
Aged Out	9 15.5%	0	9 13.8%
Other Permanency Outcomes*	3 5.2%	0	3 4.6%
Other**	5 8.6%	0	5 7.7%
Total Adjudicated Dependent Cases Terminated	58 100.0%	7 100.0%	65 100.0%
Cases Pending 12/31/2012	155	20	175

Data provided by CPCMS

* Other Permanency Outcomes include: adjudicated delinquent, death due to natural causes, death due to negligence, emancipation, permanent living arrangement, and parent has come forward.

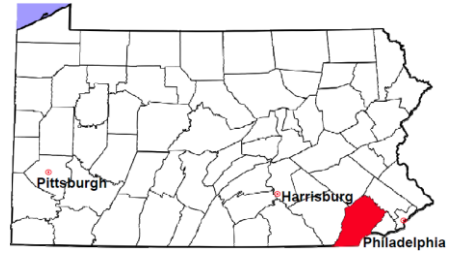
** Other includes cases where court supervision is terminated due to transfer out of jurisdiction, withdrawal and administrative closure.

Chester County

2012 Population Estimate: 506,575

Class of County: 3rd

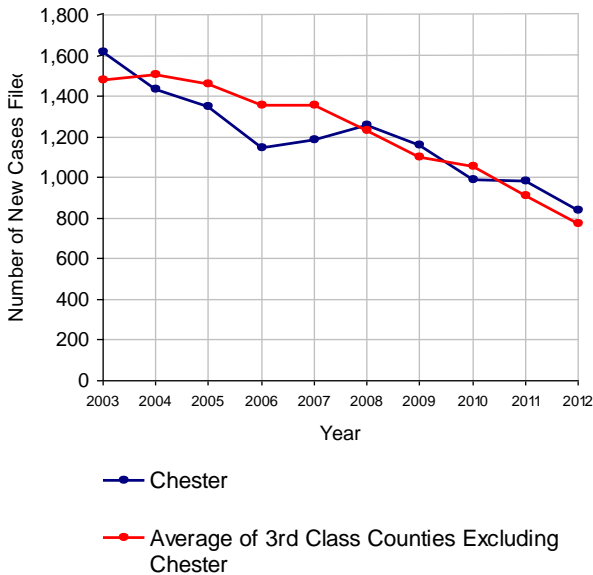
No. of Common Pleas Court Judgeships: 13



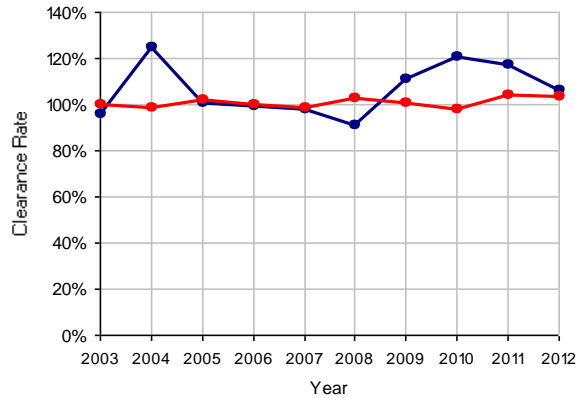
2012 Juvenile Delinquency

	No. of Cases
Cases Pending 1/1/2012	652
New Cases Filed in 2012	836
Cases Available for Processing	1,488
Processed By:	
Judge	183 20.6%
Non-Judicial Officer	572 64.3%
Other	134 15.1%
Cases Processed	889 100.0%
Cases Pending 12/31/2012	599

Juvenile Delinquency New Cases Filed, 2003-2012

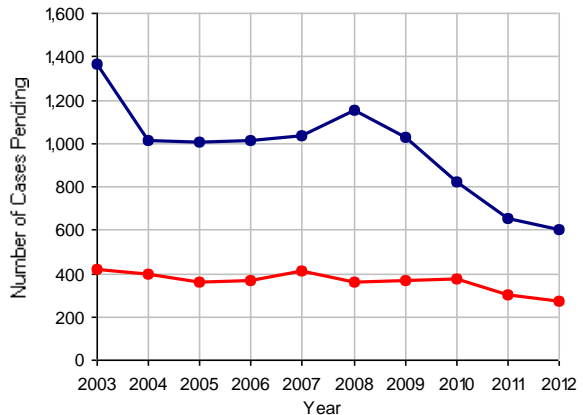


Clearance Rate, 2003-2012



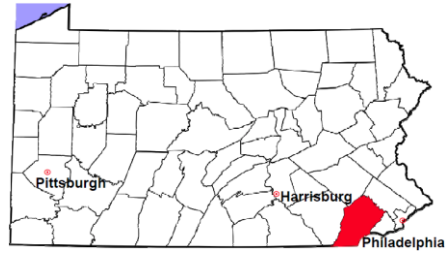
Note: Clearance Rate = Cases Processed / New Cases Filed

Cases Pending at the End of Year, 2003-2012



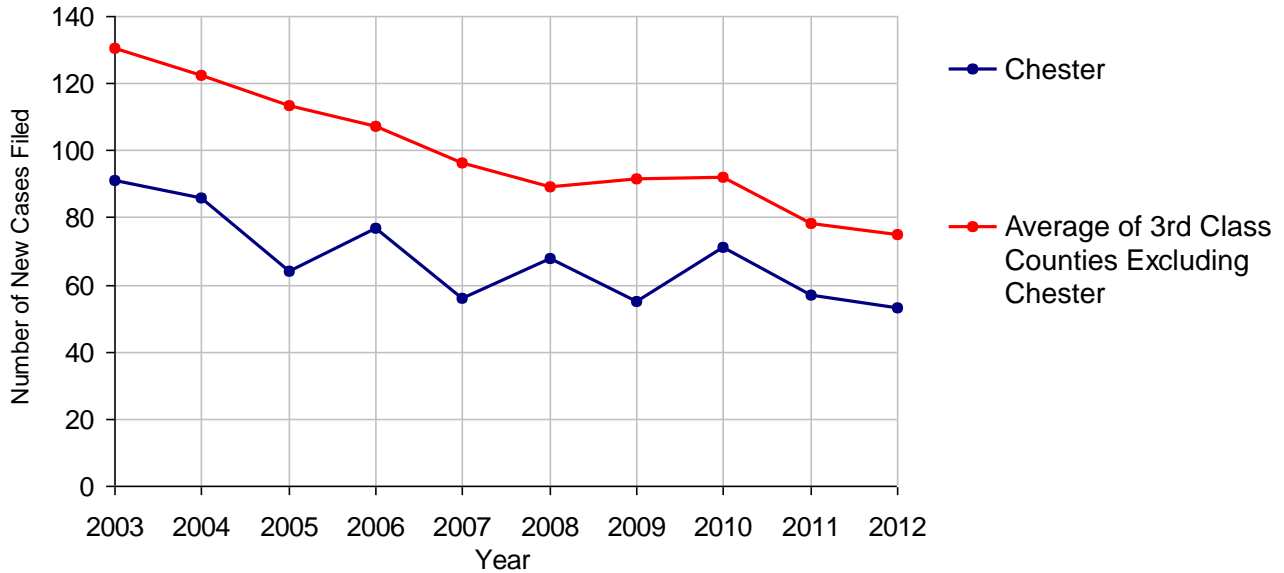
Chester County

2012 Population Estimate: 506,575
 Class of County: 3rd
 No. of Common Pleas Court Judgeships: 13



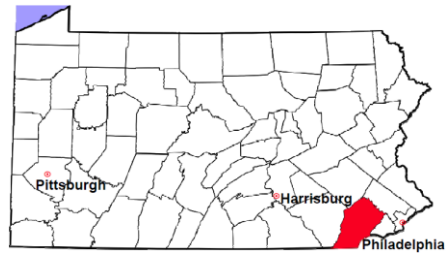
2012 Accounts	No. of Cases	
Cases Pending 1/1/2012	24	
New Cases Filed in 2012	53	
Cases Available for Processing	77	
Processed By:		
Contested before a Judge	12	22.2%
Contested before a Non-judicial Officer	0	
Uncontested	35	64.8%
Other	7	13.0%
Cases Processed	54	100.0%
Cases Pending 12/31/2012	23	

Accounts New Cases Filed, 2003-2012



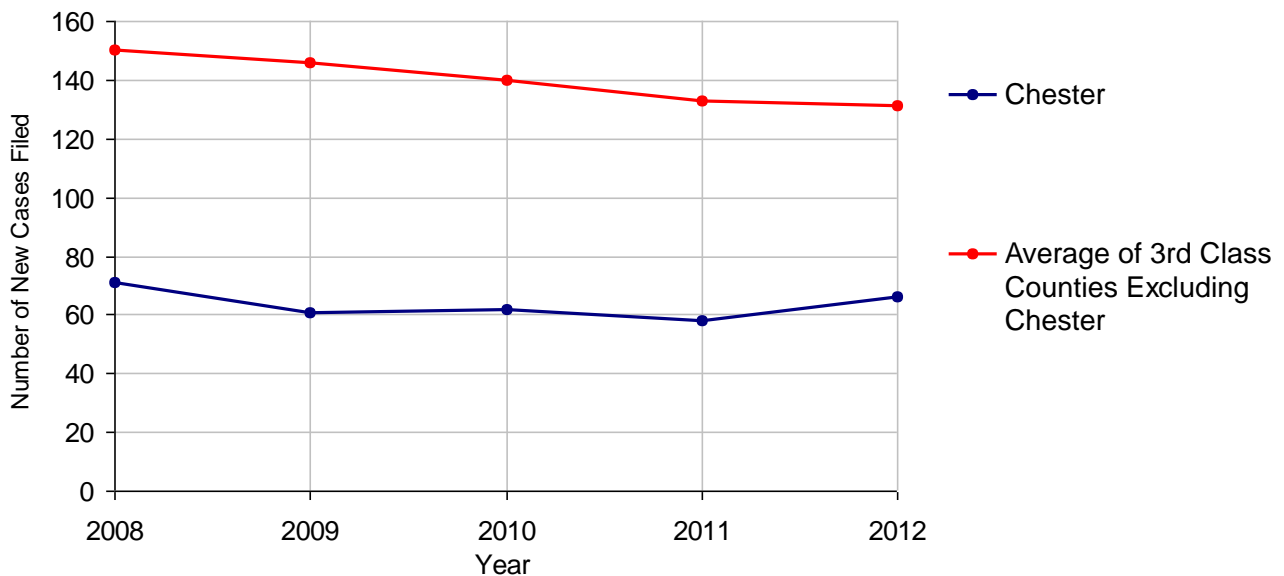
Chester County

2012 Population Estimate: 506,575
 Class of County: 3rd
 No. of Common Pleas Court Judgeships: 13



2012 Adoptions		No. of Cases	
Cases Pending 1/1/2012		11	
New Cases Filed in 2012		66	
Cases Available for Processing		77	
Processed By:			
Contested before a Judge	Granted	0	
	Denied	0	
Uncontested	Granted	54	98.2%
	Denied	0	
Other		1	1.8%
Cases Processed		55	100.0%
Cases Pending 12/31/2012		22	

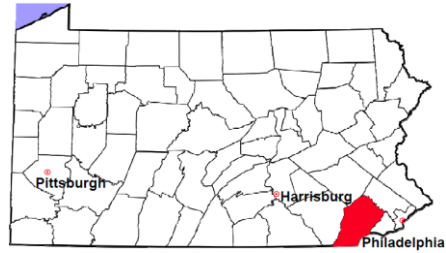
Adoptions New Cases Filed, 2008-2012



Note: Prior to 2008, each petition was counted as one new case, regardless of the number of children listed on the petition. Starting in 2008, each child listed on a petition is counted as a separate case. Therefore, statistics since 2008 should not be compared to statistics prior to 2008.

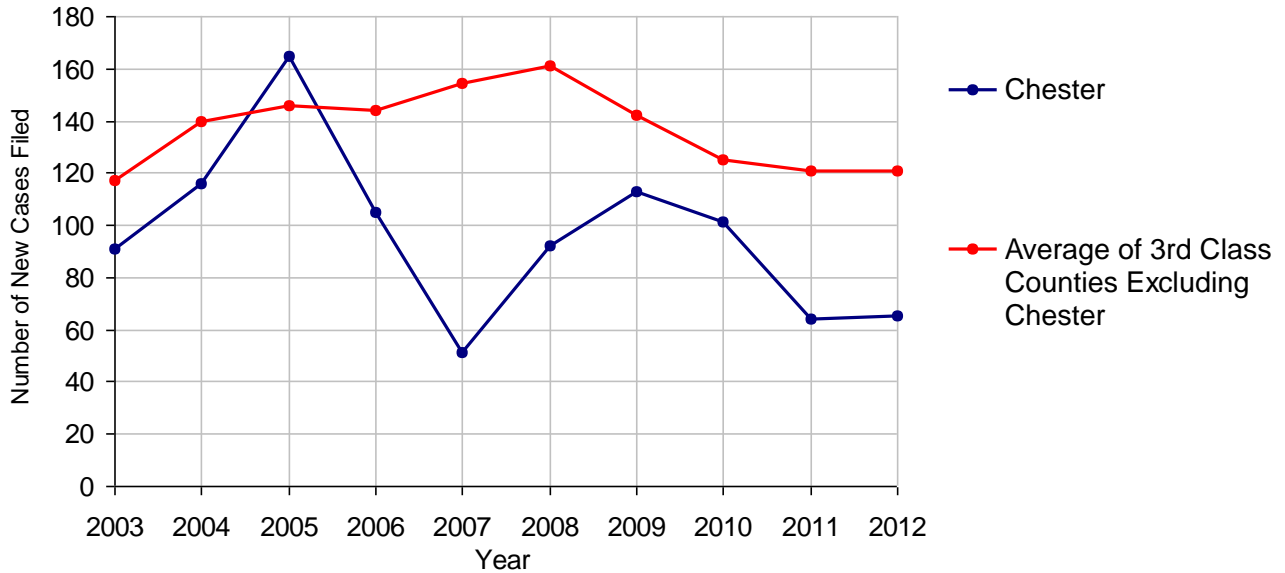
Chester County

2012 Population Estimate: 506,575
 Class of County: 3rd
 No. of Common Pleas Court Judgeships: 13



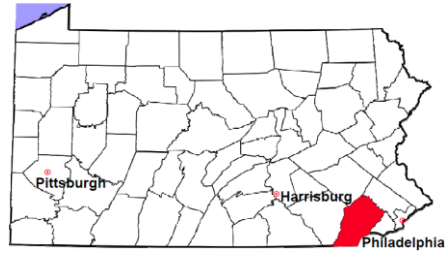
2012 Relinquishments/Terminations	No. of Cases
Cases Pending 1/1/2012	18
New Cases Filed in 2012	65
Cases Available for Processing	83
Processed By:	
Contested before a Judge	20 38.5%
Uncontested	31 59.6%
Other	1 1.9%
Cases Processed	52 100.0%
Cases Pending 12/31/2012	31

Relinquishments/Terminations New Cases Filed, 2003-2012



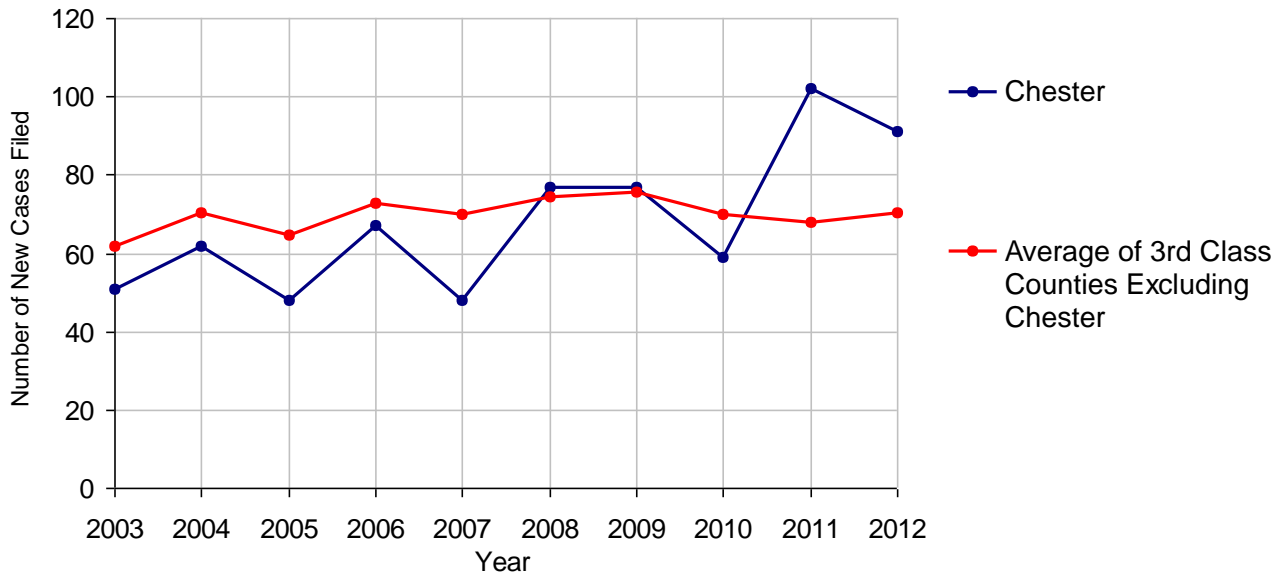
Chester County

2012 Population Estimate: 506,575
 Class of County: 3rd
 No. of Common Pleas Court Judgeships: 13



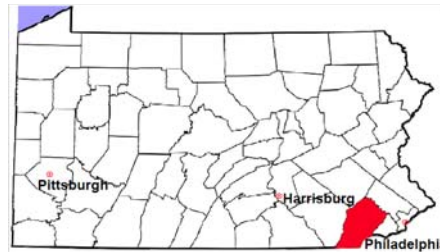
2012 Appointment of Guardians	No. of Cases
Cases Pending 1/1/2012	22
New Cases Filed in 2012	91
Cases Available for Processing	113
Processed By:	
Contested before a Judge	6 6.6%
Uncontested	71 78.0%
Other	14 15.4%
Cases Processed	91 100.0%
Cases Pending 12/31/2012	22

Appointment of Guardians New Cases Filed, 2003-2012



Chester County

2012 Population Estimate: 506,575
 Class of County: 3rd
 No. of Common Pleas Court Judgeships: 13



2012 Jury Yield and Utilization

Jury Yield

Qualification Questionnaires/Summonses Mailed:	33,300	A		
Returned Undeliverable:	1,376	B	4.1%	Of Qualification Questionnaires/Summonses Mailed
Not Responded to:	649	C	1.9%	
the Number of Prospective Jurors:				
Disqualified:	2,089	D	6.3%	
Exempted:	5,108	E	15.3%	
Excused:	3,092	F	9.3%	
Deferred to New Term:	2,073	G	6.2%	
Deferred from Previous Term:	2,524	H	7.6%	
Total Number of Qualified Jurors Available for Service:	21,437	I	64.4%	

I=A-B-C-D-E-F-G+H

Jury Utilization

the Number of Jurors:				
Reporting for Service:	5,538		25.8%	Of Jurors Qualified and Available
Told Not to Report for Service:	10,884		50.8%	
Sent to Courtroom for Jury Selection (Voir Dire):	4,041		73.0%	Of Jurors Reporting for Service
Impanelled or Sworn (jurors/alternates):	1,127		20.4%	
Removed for Cause/Hardship:	655			
Removed by Peremptory Challenge:	1,103			

Jury Costs

Total Annual Budget for Juror Operations:	\$586,899.00	J
Average Cost Per Juror:	\$17.62	K

K=J/A

In mid-2011, AOPC began utilizing the National Center for State Courts' Jury Managers' Toolbox for collecting jury data. In 2012, the counties began providing additional jury data which included information about the summoning practices in the counties. With this additional data, we can now see not only how many citizens come to our courthouses every day in anticipation of serving on a jury, but the number of citizens actually summoned and the number of those summonsed who are exempt, excused or disqualified from service. With this wider view of the jury process, we can determine the efficiency with which our courts operate, and with the assistance of the Jury Managers' Toolbox find guidance in streamlining the jury summoning practices.