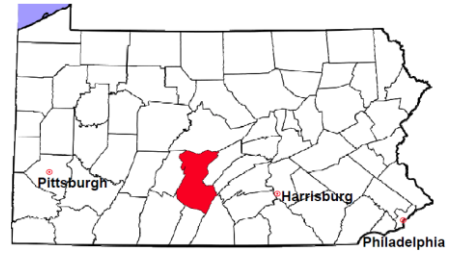


Huntingdon County

2012 Population Estimate: 45,943

Class of County: 6th

No. of Common Pleas Court Judgeships: 1



2012 Criminal	No. of Cases
---------------	--------------

Cases Pending 1/1/2012	262
New Cases Filed in 2012	687
Reopened Cases	23
Cases Available for Disposition	972
Disposed by:	
Withdrawn/Dismissed	33 4.8%
ARD	146 21.2%
Guilty Plea	455 65.9%
Non-Jury Trial	5 0.7%
Jury Trial	6 0.9%
Inactive	7 1.0%
Other	38 5.5%
Total Cases Disposed	690 100.0%
Cases Pending 12/31/2012	282
Cases Awaiting Sentencing	37

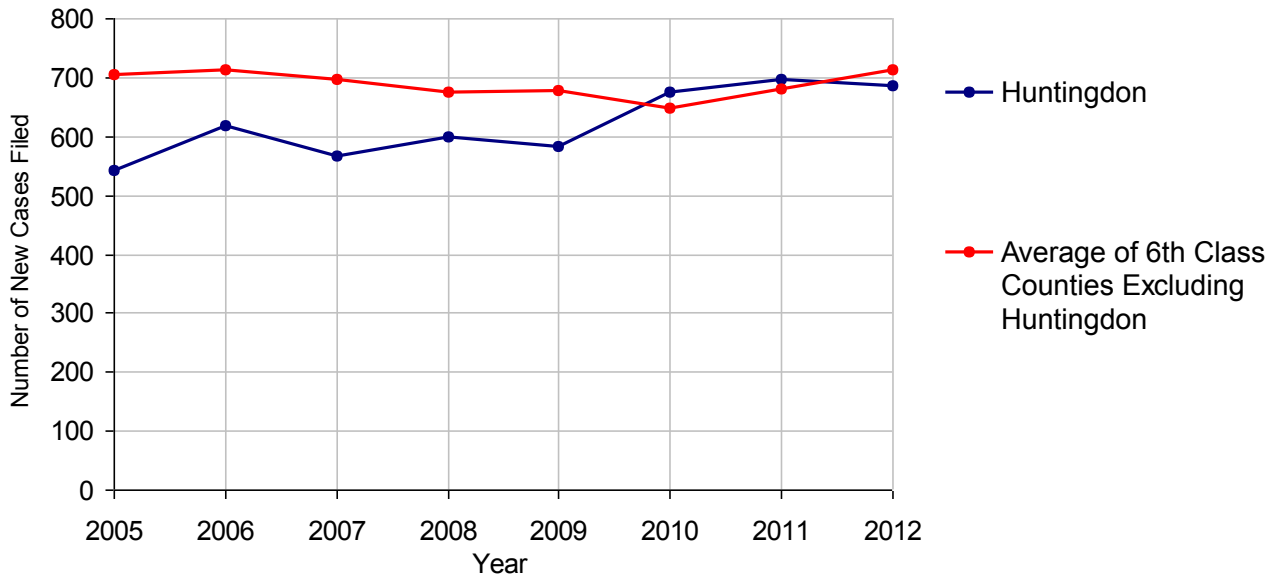


Age of Pending Cases as of 12/31/2012

0-60 Days	108	38.3%
61-120 Days	63	22.3%
121-180 Days	33	11.7%
181-240 Days	12	4.3%
241-300 Days	11	3.9%
301-360 Days	18	6.4%
Over 360 Days	37	13.1%
Total	282	100.0%

Data provided by CPCMS

Criminal New Cases Filed, 2005-2012

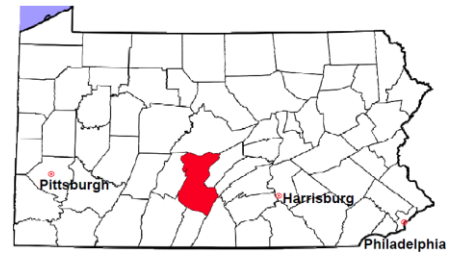


Huntingdon County

2012 Population Estimate: 45,943

Class of County: 6th

No. of Common Pleas Court Judgeships: 1



2012 Criminal - New Cases by Case Type



Case Type	Felony	Misdemeanor	Summary /Ungraded	Total
Person	65	72	0	137
Property	67	139	0	206
Drug	55	64	0	119
Weapon	8	3	0	11
Public Order	18	61	0	79
Motor Vehicle - DWI/DUI	0	133	0	133
Motor Vehicle - Other	0	1	0	1
Other	0	1	0	1
Total	213	474	0	687
	31.0%	69.0%		100.0%

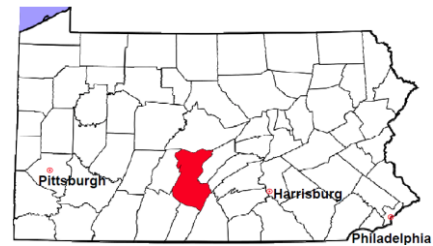
Data provided by CPCMS

Huntingdon County

2012 Population Estimate: 45,943

Class of County: 6th

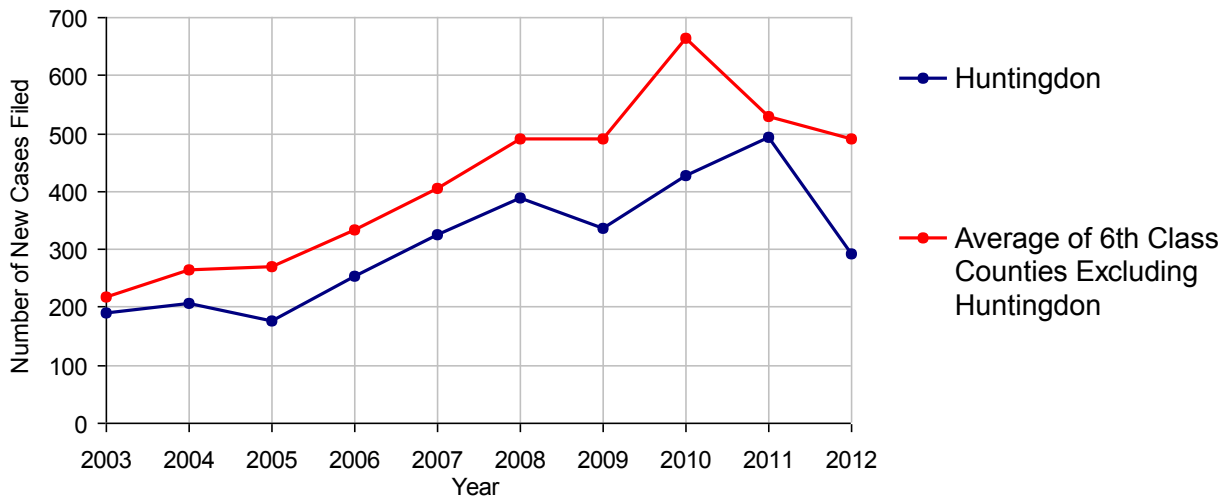
No. of Common Pleas Court Judgeships: 1



2012 Civil	Civil Action	Other	Total
Cases Pending 1/1/2012	160	300	460
Docketed Cases	161	130	291
Arbitration Appeals	0	0	0
Transferred In	0	0	0
Returned to Active	1	5	6
Cases Available for Processing	322	435	757
Disposed By:			
Default Judgments	54	44	98
Cases Decided by Arbitration Board	1	1	2
Dispositive Motions	6	5	11
Settlements	37	25	62
Moved to Inactive Status	0	0	0
Transferred/Withdrawn	0	1	1
Administrative Purge	0	0	0
Other	8	5	13
Jury Trial	0	0	0
Non-Jury Trial	0	0	0
Total Cases Disposed	106	81	187
Cases Pending 12/31/2012	216	354	570

Age of Pending Cases as of 12/31/2012 (Civil Action Only)		
0-6 months	50	23.1%
7-12 months	49	22.7%
13-18 months	43	19.9%
19-24 months	34	15.7%
25-30 months	40	18.5%
31-36 months	0	
37-42 months	0	
43-48 months	0	
49-54 months	0	
55-60 months	0	
61-66 months	0	
67-72 months	0	
Over 72 months	0	
Total	216	100.0%

Docketed Cases, 2003-2012



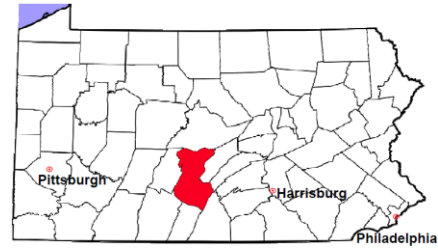
Note: Prior to June 2010, docketed cases under the "Other" category were not reported. The inclusion of these cases starting from June 2010 may contribute to an increase in docketed cases from 2009 to 2010.

Huntingdon County

2012 Population Estimate: 45,943

Class of County: 6th

No. of Common Pleas Court Judgeships: 1



2012 Civil - Docketed Cases Listed by Case Type

TORT 51 17.5%

(does not include mass tort)

Intentional	3
Malicious Prosecution	1
Motor Vehicle	24
Nuisance	1
Premise Liability	6
Product Liability	3
Slander/Libel/Defamation	2
Other	11

MASS TORT 0

Asbestos	0
Tobacco	0
Toxic Tort - DES	0
Toxic Tort - Implant	0
Toxic Waste	0
Other	0

PROFESSIONAL LIABILITY 5 1.7%

Dental	0
Legal	2
Medical Malpractice	3
Other	0

CONTRACT 99 34.0%

(does not include judgments)

Buyer Plaintiff	3
Debt Collection: Credit Card	53
Debt Collection: Other	36
Employment Dispute:	
Employment Dispute: Discriminatio	2
Employment Dispute: Other	0
Other	5

REAL PROPERTY 104 35.7%

Ejectment*	5
Eminent Domain/Condemnation	5
Ground Rent	0
Landlord/Tenant Dispute	6
Mortgage Foreclosure:	
Residential*	68
Commercial*	1
Partition of Real Property*	6
Quiet Title*	9
Other*	4

CIVIL APPEALS 16 5.5%

- Administrative Agencies

Board of Assessment*	2
Board of Elections*	0
Dept. of Transportation*	5
Zoning Board*	0
Statutory Appeal - Other*	0
Other*	9

MISCELLANEOUS 16 5.5%

Common Law/	
Statutory Arbitration*	2
Declaratory Judgment*	3
Mandamus*	0
Non-Domestic Relations	
Restraining Order*	1
Quo Warranto*	0
Replevin*	0
Other*	10

TOTAL DOCKETED CASES: 291 100%

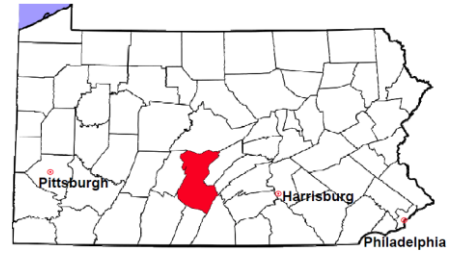
Of the Docketed Cases:

Pro Se Filings:	25	8.6%	Class Action Suits:	0	MDJ Appeals:	21	7.2%
-----------------	----	------	---------------------	---	--------------	----	------

* Civil Other

Huntingdon County

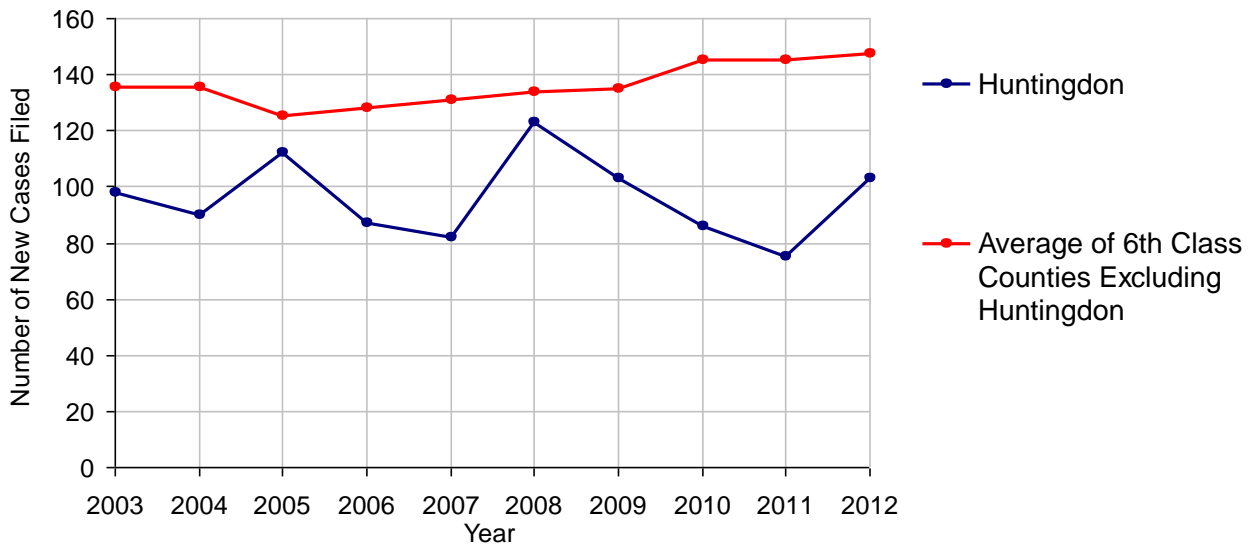
2012 Population Estimate: 45,943
 Class of County: 6th
 No. of Common Pleas Court Judgeships: 1



2012 Protection From Abuse

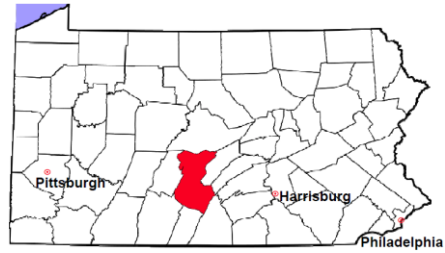
	No. of Petitions
Cases Pending 1/1/2012	15
New Cases Filed in 2012	103
<i>Of these, Petitions Requesting Temporary Orders: 103 (100.0%)</i>	
<i>Temporary Orders DENIED: 1 (1.0%), Temporary Orders GRANTED: 102 (99.0%)</i>	
Cases Available for Processing	118
Processed By:	
Temporary Order DENIED After Ex Parte Hearing and No Evidentiary Hearing Scheduled	6 6.1%
Temporary Order DISMISSED After Evidentiary Hearing and No Final Order Entered	12 12.2%
Final Order DENIED After Evidentiary Hearing Before a Judge	4 4.1%
Final Order GRANTED After Evidentiary Hearing Before a Judge	10 10.2%
Plaintiff Did Not Appear For Evidentiary Hearing	3 3.1%
Final Order by STIPULATION OR AGREEMENT Between the Parties	41 41.8%
Petition WITHDRAWN by Plaintiff	10 10.2%
TRANSFERRED to Another Jurisdiction	0
DECEASED Party	6 6.1%
Other	6 6.1%
Cases Processed	98 100.0%
Cases Pending 12/31/2012	20

PFA New Cases Filed, 2003-2012



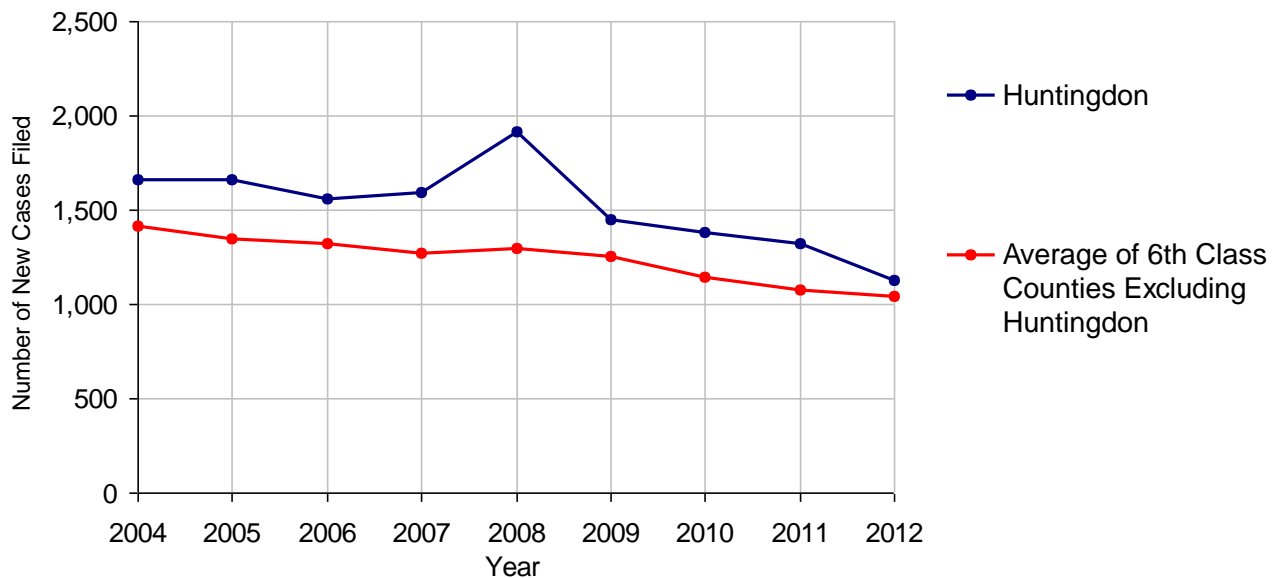
Huntingdon County

2012 Population Estimate: 45,943
 Class of County: 6th
 No. of Common Pleas Court Judgeships: 1



2012 Spousal & Child Support	No. of Petitions	
Cases Pending 1/1/2012	223	
New Cases Filed in 2012	1,126	
Dockets Transferred In (+)	217	
Dockets Transferred Out (-)	27	
Cases Available for Processing	1,539	
Processed By:		
Judge	29	2.1%
Intake Officer	1,345	97.8%
Hearing Officer	0	
Other	1	0.1%
Cases Processed	1,375	100.0%
Cases Pending 12/31/2012	164	

Spousal & Child Support New Cases Filed, 2004-2012

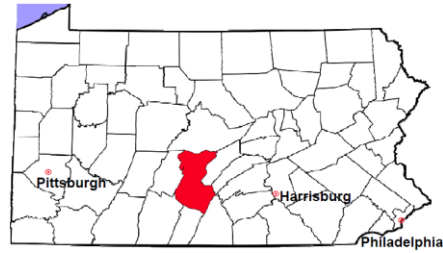


Huntingdon County

2012 Population Estimate: 45,943

Class of County: 6th

No. of Common Pleas Court Judgeships: 1

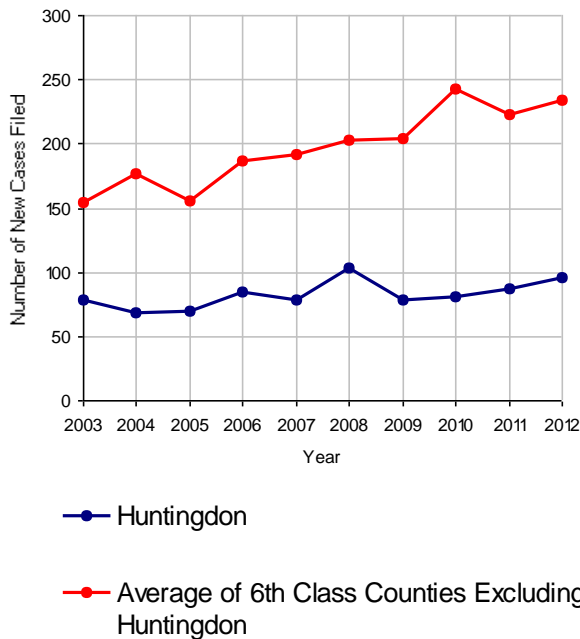


2012 Custody/Partial Custody/Visitation

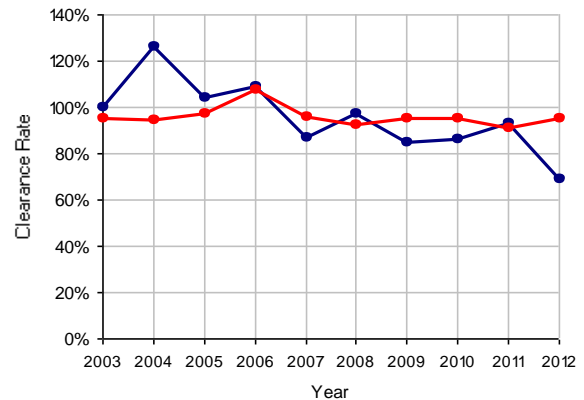
No. of Petitions

Cases Pending 1/1/2012	86
New Cases Filed in 2012	96
Cases Available for Processing	182
Processed By:	
Judge	66 100.0%
Non-Judicial Officer	0
Other	0
Cases Processed	66 100.0%
Cases Pending 12/31/2012	116

Custody/Partial Custody/Visitation New Cases Filed, 2003-2012

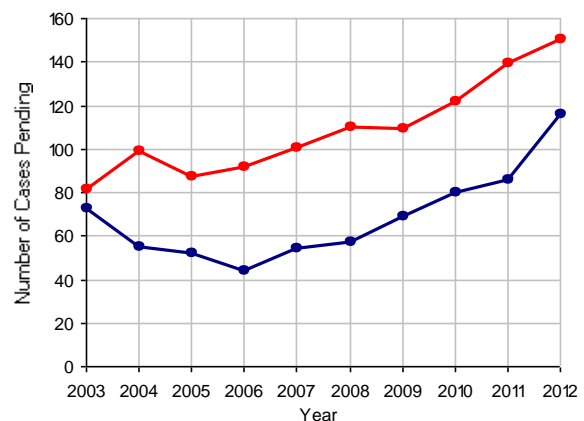


Clearance Rate, 2003-2012



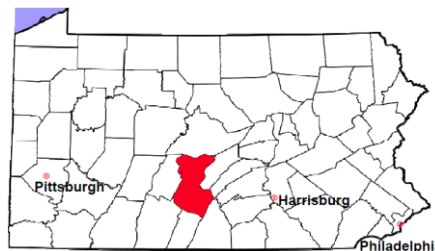
Note: Clearance Rate = Cases Processed / New Cases Filed

Cases Pending at the End of Year, 2003-2012



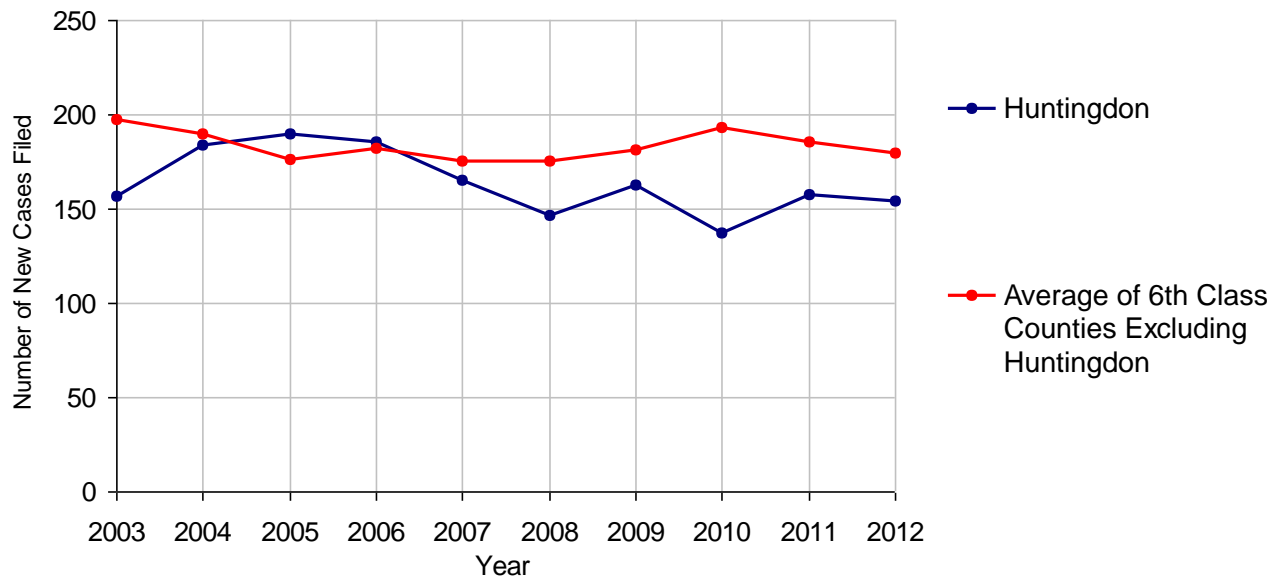
Huntingdon County

2012 Population Estimate: 45,943
 Class of County: 6th
 No. of Common Pleas Court Judgeships: 1



2012 Divorce	No. of Petitions	
Cases Pending 1/1/2012	282	
New Cases Filed in 2012	154	
Cases Available for Processing	436	
Processed By:		
Contested Before a Judge	44	20.0%
Contested Before a Master	0	
Uncontested	108	49.1%
Other	68	30.9%
Cases Processed	220	100.0%
Cases Pending 12/31/2012	216	

Divorce New Cases Filed, 2003-2012

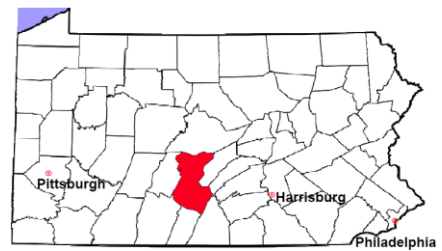


Huntingdon County

2012 Population Estimate: 45,943

Class of County: 6th

No. of Common Pleas Court Judgeships: 1



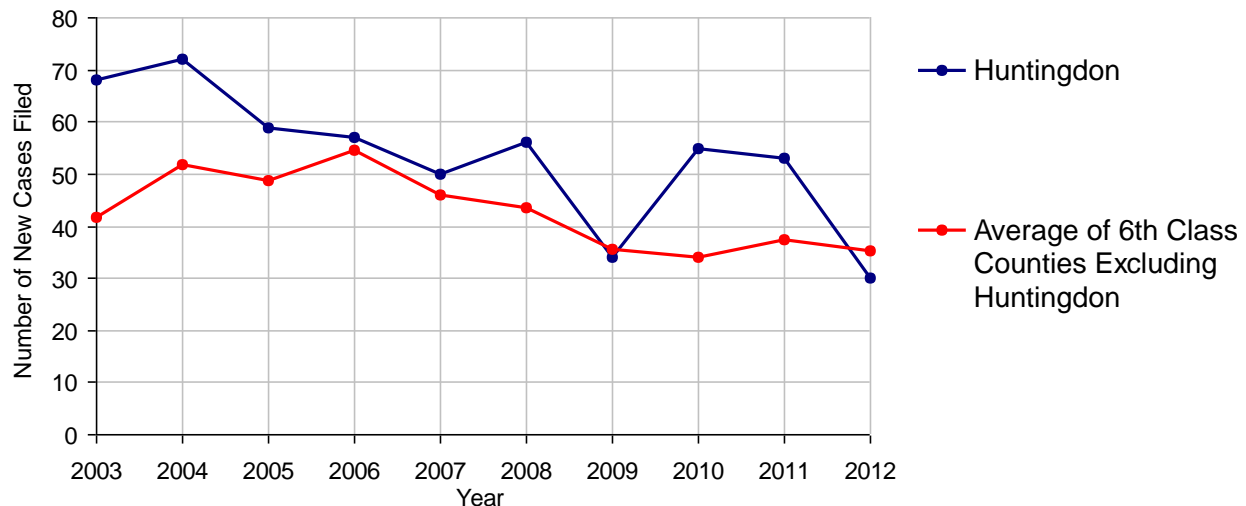
2012 Juvenile Dependency - Active Dependent Inventory



	Abuse/ Neglect	Status Offenses	Total
Cases Pending 1/1/2012	9	0	9
New Petitions Filed in 2012	24	6	30
Other	0	1	1
Total Petitions Available for Processing	33	7	40
Processed by:			
Adjudicated Dependent			
Judge	24	7	31
Master	0	0	0
Adjudicated NOT Dependent			
Judge	0	0	0
Master	0	0	0
Withdrawn/Dismissed/Inactive	4	0	4
Other	3	0	3
Total Petitions Processed	31	7	38
Cases Pending 12/31/2012	2	0	2

Data provided by CPCMS

Abuse/Neglect and Status Offenses New Cases Filed, 2003-2012



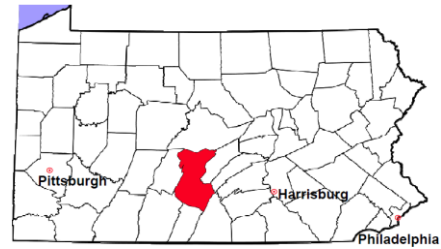
Note: Dependency data for 2002-2010 were collected manually. Dependency data for 2011 and 2012 were provided by CPCMS.

Huntingdon County

2012 Population Estimate: 45,943

Class of County: 6th

No. of Common Pleas Court Judgeships: 1



2012 Juvenile Dependency - Adjudicated Dependent Inventory



	Abuse/ Neglect	Status Offenses	Total
Cases Pending 1/1/2012	29	1	30
New Adjudicated Dependent Cases	24	7	31
Other	1	0	1
Total Adjudicated Dependent Cases	54	8	62
<u>Court Supervision Terminated:</u>			
Family Reunification	8 32.0%	1 16.7%	9 29.0%
Adoption	0	0	0
Placement with a Relative/Guardian	12 48.0%	4 66.7%	16 51.6%
Aged Out	2 8.0%	0	2 6.5%
Other Permanency Outcomes*	2 8.0%	0	2 6.5%
Other**	1 4.0%	1 16.7%	2 6.5%
Total Adjudicated Dependent Cases Terminated	25 100.0%	6 100.0%	31 100.0%
Cases Pending 12/31/2012	29	2	31

Data provided by CPCMS

* Other Permanency Outcomes include: adjudicated delinquent, death due to natural causes, death due to negligence, emancipation, permanent living arrangement, and parent has come forward.

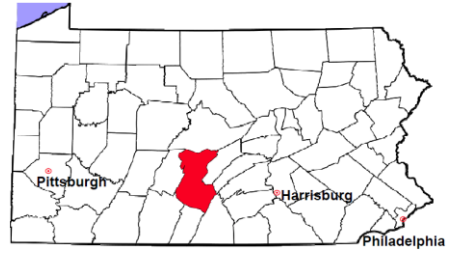
** Other includes cases where court supervision is terminated due to transfer out of jurisdiction, withdrawal and administrative closure.

Huntingdon County

2012 Population Estimate: 45,943

Class of County: 6th

No. of Common Pleas Court Judgeships: 1

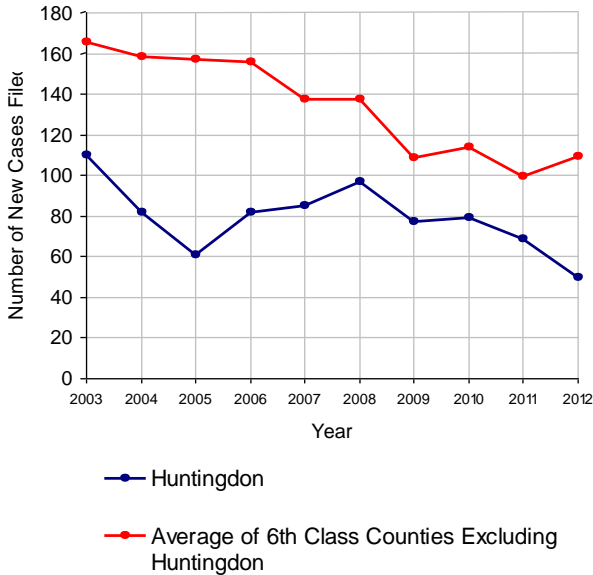


2012 Juvenile Delinquency

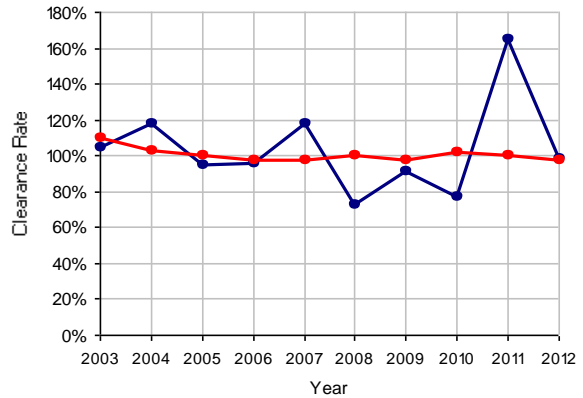
	No. of Cases
Cases Pending 1/1/2012	15
New Cases Filed in 2012	50
Cases Available for Processing	65
Processed By:	
Judge	49 (O) 100.0%
Non-Judicial Officer	0
Other	0
Cases Processed	49 100.0%
Cases Pending 12/31/2012	16

(O) - Overinclusive, includes consent decrees.

Juvenile Delinquency New Cases Filed, 2003-2012

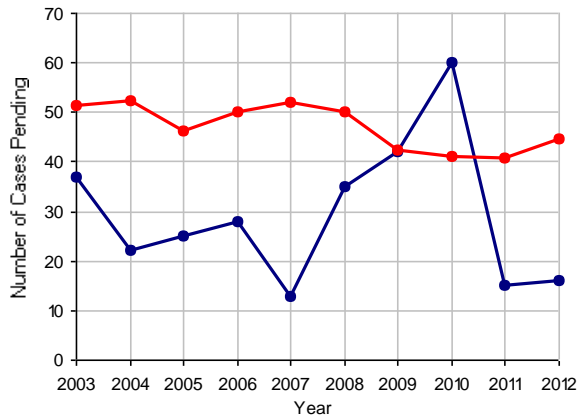


Clearance Rate, 2003-2012



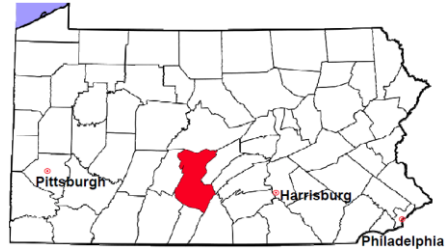
Note: Clearance Rate = Cases Processed / New Cases Filed

Cases Pending at the End of Year, 2003-2012



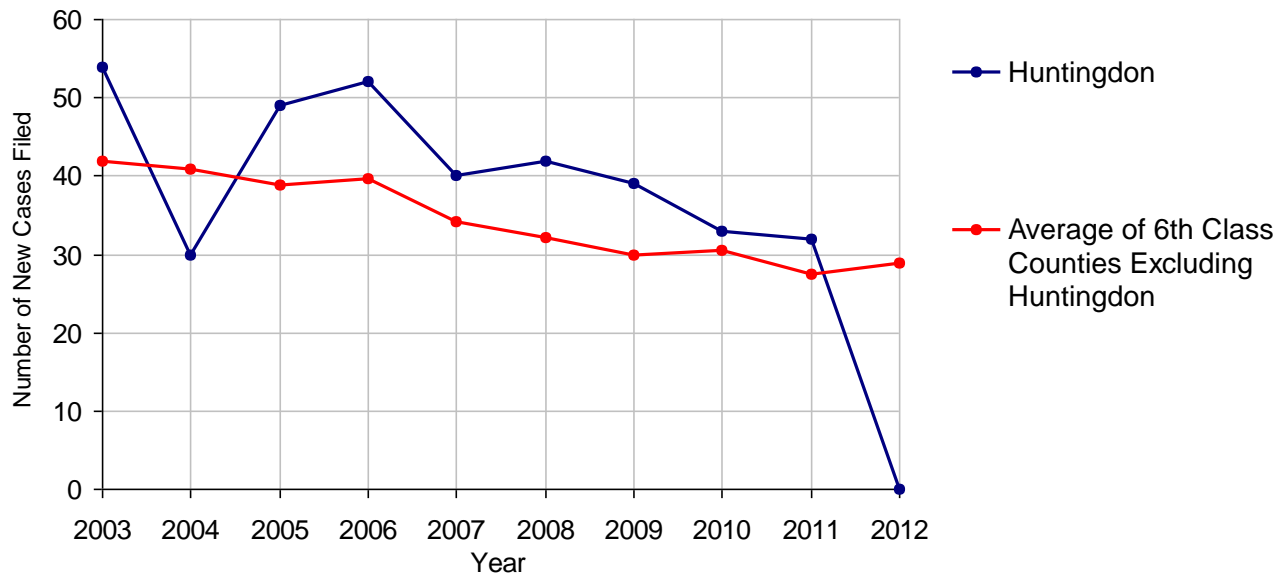
Huntingdon County

2012 Population Estimate: 45,943
 Class of County: 6th
 No. of Common Pleas Court Judgeships: 1



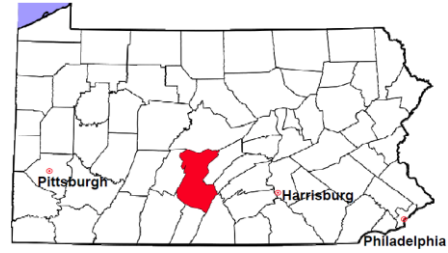
2012 Accounts	No. of Cases	
Cases Pending 1/1/2012	1	
New Cases Filed in 2012	0	
Cases Available for Processing	1	
Processed By:		
Contested before a Judge	0	
Contested before a Non-judicial Officer	0	
Uncontested	1	100.0%
Other	0	
Cases Processed	1	100.0%
Cases Pending 12/31/2012	0	

Accounts New Cases Filed, 2003-2012



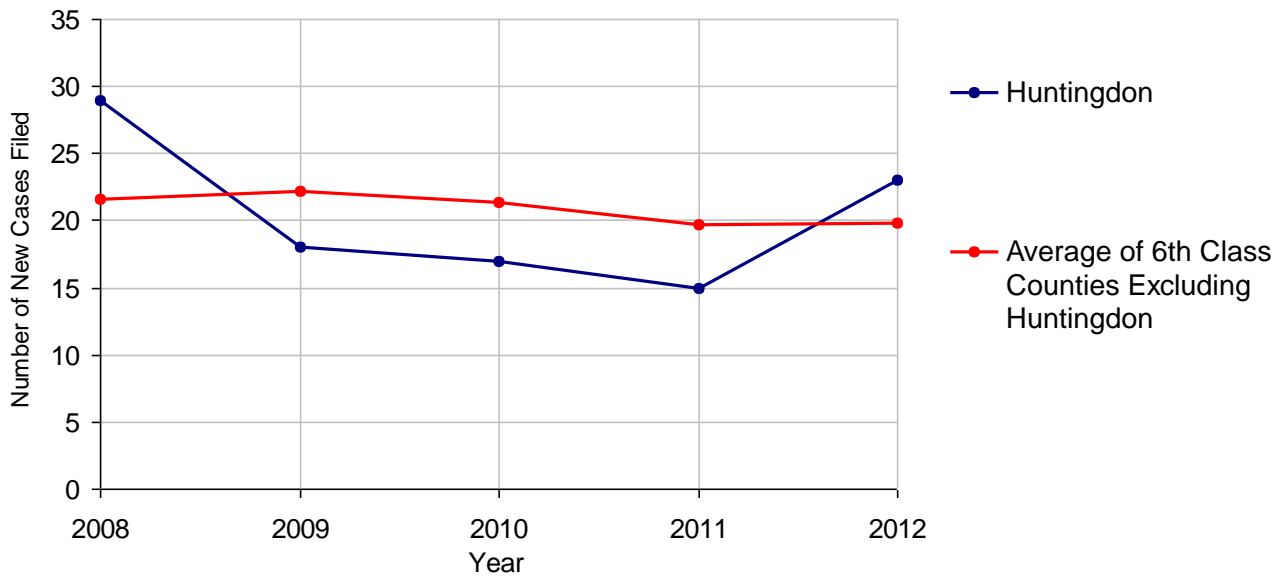
Huntingdon County

2012 Population Estimate: 45,943
 Class of County: 6th
 No. of Common Pleas Court Judgeships: 1



2012 Adoptions		No. of Cases	
Cases Pending 1/1/2012		26	
New Cases Filed in 2012		23	
Cases Available for Processing		49	
Processed By:			
Contested before a Judge	Granted	1	5.3%
	Denied	0	
Uncontested	Granted	17	89.5%
	Denied	1	5.3%
Other		0	
Cases Processed		19	100.0%
Cases Pending 12/31/2012		30	

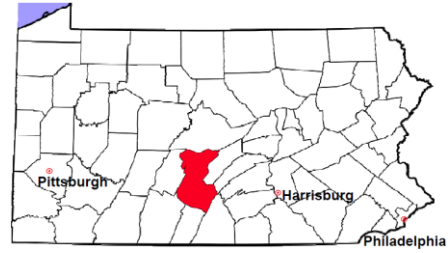
Adoptions New Cases Filed, 2008-2012



Note: Prior to 2008, each petition was counted as one new case, regardless of the number of children listed on the petition. Starting in 2008, each child listed on a petition is counted as a separate case. Therefore, statistics since 2008 should not be compared to statistics prior to 2008.

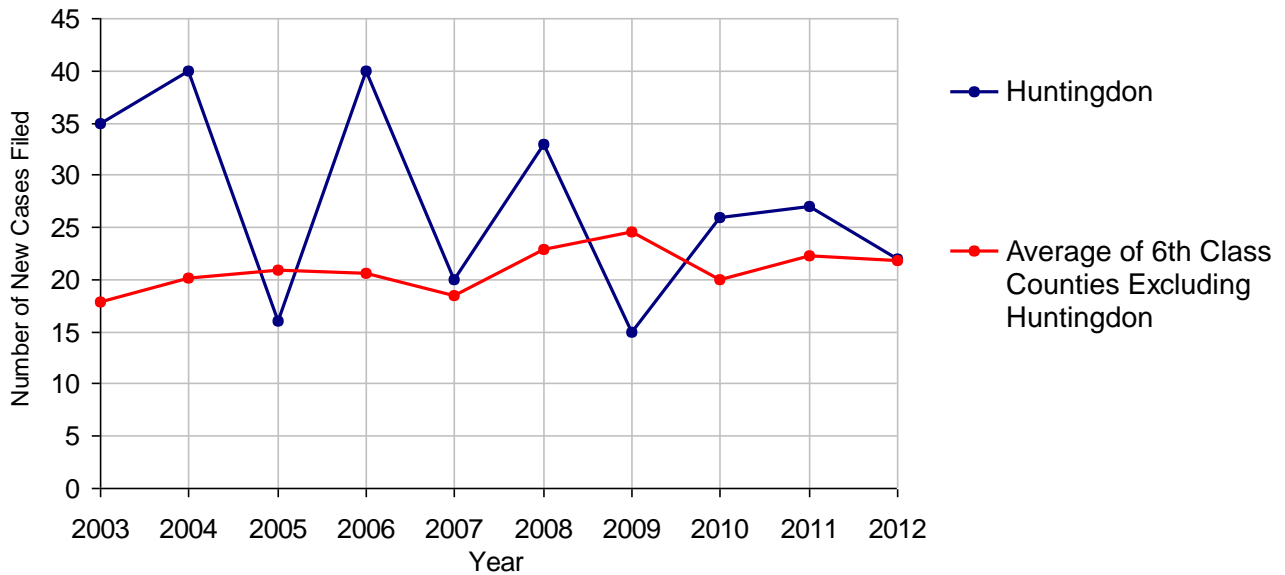
Huntingdon County

2012 Population Estimate: 45,943
 Class of County: 6th
 No. of Common Pleas Court Judgeships: 1



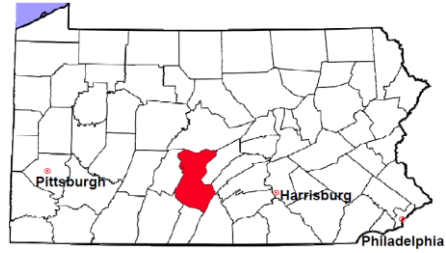
2012 Relinquishments/Terminations	No. of Cases
Cases Pending 1/1/2012	71
New Cases Filed in 2012	22
Cases Available for Processing	93
Processed By:	
Contested before a Judge	2 9.1%
Uncontested	18 81.8%
Other	2 9.1%
Cases Processed	22 100.0%
Cases Pending 12/31/2012	71

Relinquishments/Terminations New Cases Filed, 2003-2012



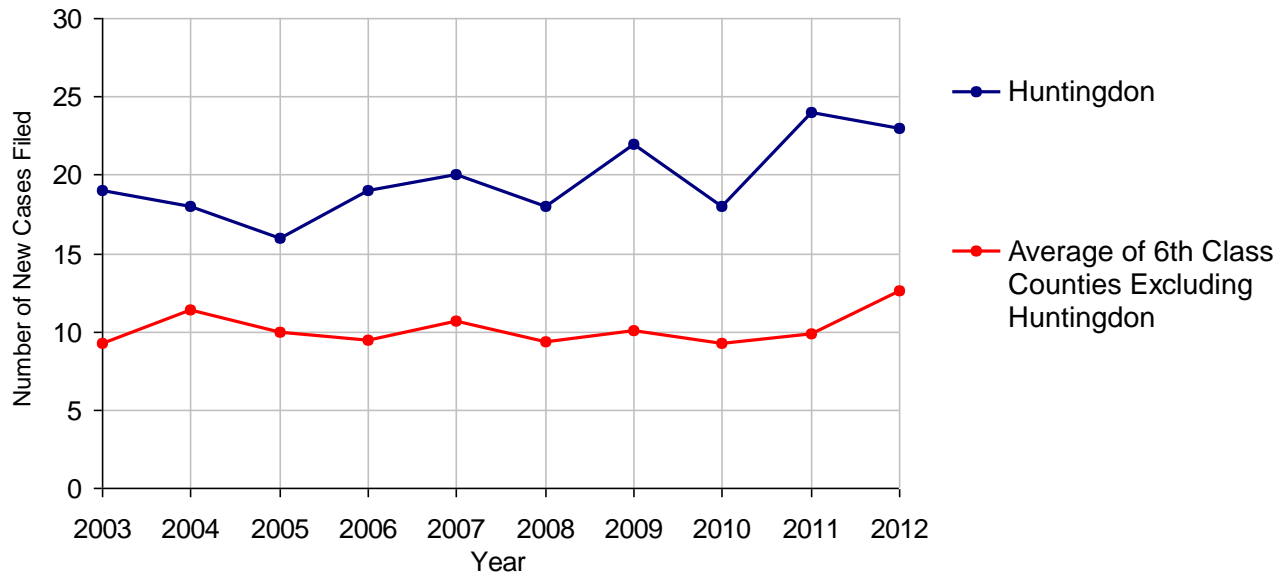
Huntingdon County

2012 Population Estimate: 45,943
 Class of County: 6th
 No. of Common Pleas Court Judgeships: 1



2012 Appointment of Guardians		No. of Cases
Cases Pending 1/1/2012		67
New Cases Filed in 2012		23
Cases Available for Processing		90
Processed By:		
Contested before a Judge	1	6.7%
Uncontested	12	80.0%
Other	2	13.3%
Cases Processed	15	100.0%
Cases Pending 12/31/2012		75

Appointment of Guardians New Cases Filed, 2003-2012

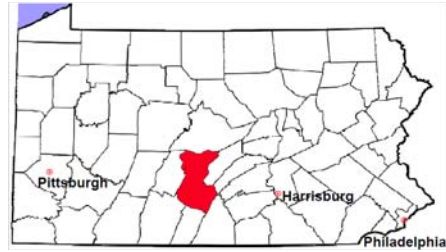


Huntingdon County

2012 Population Estimate: 45,943

Class of County: 6th

No. of Common Pleas Court Judgeships: 1



2012 Jury Yield and Utilization

Jury Yield

Qualification Questionnaires/Summonses Mailed:	900	A		
Returned Undeliverable:	118	B	13.1%	Of Qualification Questionnaires/Summonses Mailed
Not Responded to:	165	C	18.3%	
the Number of Prospective Jurors:				
Disqualified:	147	D	16.3%	
Exempted:	17	E	1.9%	
Excused:	8	F	0.9%	
Deferred to New Term:	0	G		
Deferred from Previous Term:	0	H		
Total Number of Qualified Jurors Available for Service:	445	I	49.4%	

$I = A - B - C - D - E - F - G + H$

Jury Utilization

the Number of Jurors:			
Reporting for Service:	445	100.0%	Of Jurors Qualified and Available
Told Not to Report for Service:	0		
Sent to Courtroom for Jury Selection (Voir Dire):	389	87.4%	Of Jurors Reporting for Service
Impanelled or Sworn (jurors/alternates):	111	24.9%	
Removed for Cause/Hardship:	0		
Removed by Peremptory Challenge:	0		

Jury Costs

Total Annual Budget for Juror Operations:	\$38,475.00	J
Average Cost Per Juror:	\$42.75	K

$K = J/A$

In mid-2011, AOPC began utilizing the National Center for State Courts' Jury Managers' Toolbox for collecting jury data. In 2012, the counties began providing additional jury data which included information about the summoning practices in the counties. With this additional data, we can now see not only how many citizens come to our courthouses every day in anticipation of serving on a jury, but the number of citizens actually summonsed and the number of those summonsed who are exempt, excused or disqualified from service. With this wider view of the jury process, we can determine the efficiency with which our courts operate, and with the assistance of the Jury Managers' Toolbox find guidance in streamlining the jury summoning practices.