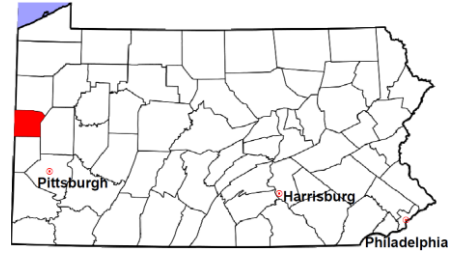


Lawrence County

2012 Population Estimate: 89,871
 Class of County: 5th
 No. of Common Pleas Court Judgeships: 4



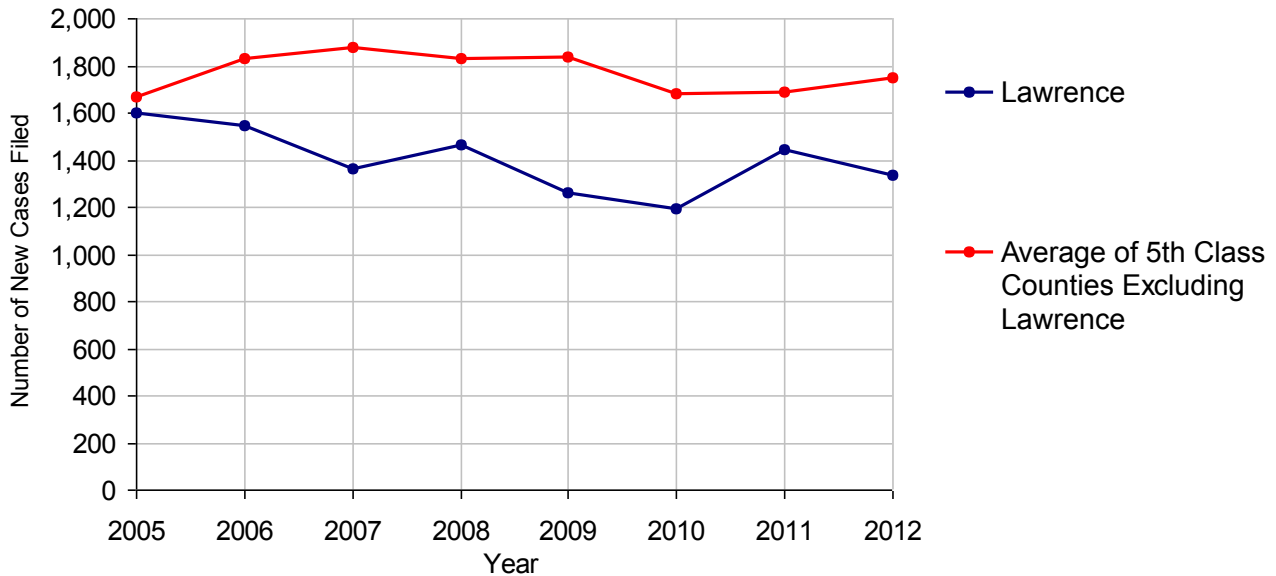
2012 Criminal	No. of Cases
Cases Pending 1/1/2012	693
New Cases Filed in 2012	1,335
Reopened Cases	128
Cases Available for Disposition	2,156
Disposed by:	
Withdrawn/Dismissed	109 7.6%
ARD	280 19.4%
Guilty Plea	918 63.8%
Non-Jury Trial	2 0.1%
Jury Trial	8 0.6%
Inactive	56 3.9%
Other	67 4.7%
Total Cases Disposed	1,440 100.0%
Cases Pending 12/31/2012	716
Cases Awaiting Sentencing	229



Age of Pending Cases as of 12/31/2012		
0-60 Days	238	33.2%
61-120 Days	215	30.0%
121-180 Days	83	11.6%
181-240 Days	53	7.4%
241-300 Days	19	2.7%
301-360 Days	21	2.9%
Over 360 Days	87	12.2%
Total	716	100.0%

Data provided by CPCMS

Criminal New Cases Filed, 2005-2012

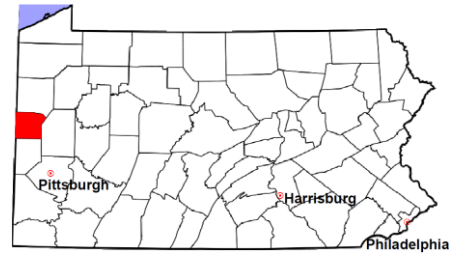


Lawrence County

2012 Population Estimate: 89,871

Class of County: 5th

No. of Common Pleas Court Judgeships: 4



2012 Criminal - New Cases by Case Type

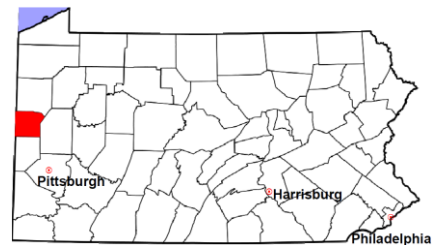


Case Type	Felony	Misdemeanor	Summary /Ungraded	Total
Person	120	83	0	203
Property	282	233	0	515
Drug	88	69	0	157
Weapon	12	3	0	15
Public Order	34	49	7	90
Motor Vehicle - DWI/DUI	0	349	0	349
Motor Vehicle - Other	0	3	0	3
Other	3	0	0	3
Total	539	789	7	1,335
	40.4%	59.1%	0.5%	100.0%

Data provided by CPCMS

Lawrence County

2012 Population Estimate: 89,871
 Class of County: 5th
 No. of Common Pleas Court Judgeships: 4

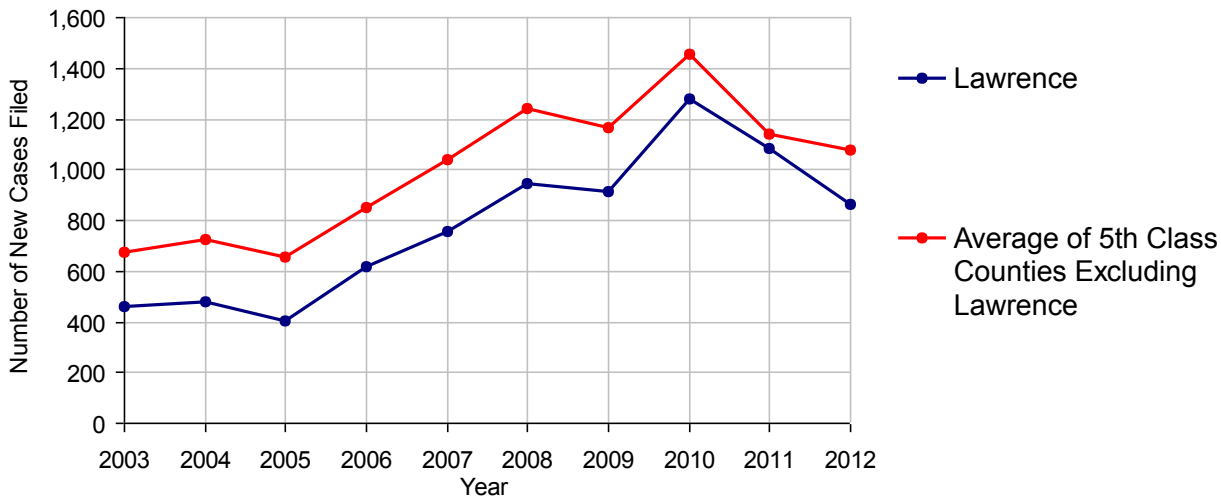


2012 Civil	Civil Action	Other	Total
Cases Pending 1/1/2012	73	262	335 (R)
Docketed Cases	497	366	863
Arbitration Appeals	6	1	7
Transferred In	0	0	0
Returned to Active	0	0	0
Cases Available for Processing	576	629	1,205
Disposed By:			
Default Judgments	131	70	201
Cases Decided by Arbitration Board	20	4	24
Dispositive Motions	12	10	22
Settlements	25	9	34
Moved to Inactive Status	5	2	7
Transferred/Withdrawn	10	5	15
Administrative Purge	20	128	148
Other	306	165	471
Jury Trial	4	0	4
Non-Jury Trial	5	2	7
Total Cases Disposed	538	395	933
Cases Pending 12/31/2012	38	234	272

Age of Pending Cases as of 12/31/2012 (Civil Action Only)		
0-6 months	22	57.9%
7-12 months	8	21.1%
13-18 months	3	7.9%
19-24 months	2	5.3%
25-30 months	2	5.3%
31-36 months	1	2.6%
37-42 months	0	
43-48 months	0	
49-54 months	0	
55-60 months	0	
61-66 months	0	
67-72 months	0	
Over 72 months	0	
Total	38	100.0%

(R) - Revised

Docketed Cases, 2003-2012



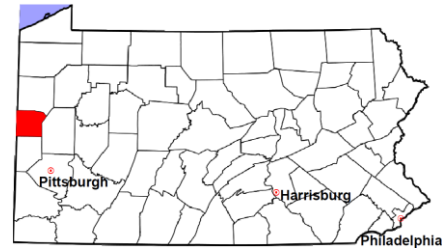
Note: Prior to June 2010, docketed cases under the "Other" category were not reported. The inclusion of these cases starting from June 2010 may contribute to an increase in docketed cases from 2009 to 2010.

Lawrence County

2012 Population Estimate: 89,871

Class of County: 5th

No. of Common Pleas Court Judgeships: 4



2012 Civil - Docketed Cases Listed by Case Type

TORT	124	14.4%	REAL PROPERTY	286	33.1%
<i>(does not include mass tort)</i>					
Intentional	4		Ejectment*	20	
Malicious Prosecution	0		Eminent Domain/Condemnation	5	
Motor Vehicle	80		Ground Rent	0	
Nuisance	0		Landlord/Tenant Dispute	4	
Premise Liability	24		Mortgage Foreclosure:		
Product Liability	3		Residential*	234	
Slander/Libel/Defamation	1		Commercial*	4	
Other	12		Partition of Real Property*	4	
MASS TORT	1	0.1%	Quiet Title*	6	
Asbestos	0		Other*	9	
Tobacco	0		CIVIL APPEALS	45	5.2%
Toxic Tort - DES	0		<i>- Administrative Agencies</i>		
Toxic Tort - Implant	0		Board of Assessment*	15	
Toxic Waste	0		Board of Elections*	1	
Other	1		Dept. of Transportation*	26	
PROFESSIONAL LIABILITY	10	1.2%	Zoning Board*	0	
Dental	3		Statutory Appeal - Other*	3	
Legal	0		Other*	0	
Medical Malpractice	7		MISCELLANEOUS	39	4.5%
Other	0		Common Law/		
CONTRACT	358	41.5%	Statutory Arbitration*	0	
<i>(does not include judgments)</i>			Declaratory Judgment*	7	
Buyer Plaintiff	8		Mandamus*	0	
Debt Collection: Credit Card	202		Non-Domestic Relations		
Debt Collection: Other	115		Restraining Order*	0	
Employment Dispute:			Quo Warranto*	0	
Employment Dispute: Discriminatio	1		Replevin*	10	
Employment Dispute: Other	0		Other*	22	
Other	32		TOTAL DOCKETED CASES:	863	100%

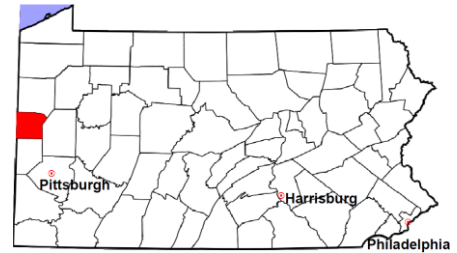
Of the Docketed Cases:

Pro Se Filings: 58 6.7% Class Action Suits: 4 0.5% MDJ Appeals: 88 10.2%

* Civil Other

Lawrence County

2012 Population Estimate: 89,871
 Class of County: 5th
 No. of Common Pleas Court Judgeships: 4



2012 Protection From Abuse

**No. of
Petitions**

Cases Pending 1/1/2012	45
New Cases Filed in 2012	512
<i>Of these, Petitions Requesting Temporary Orders: 512 (100.0%)</i>	
<i>Temporary Orders DENIED: 24 (4.7%), Temporary Orders GRANTED: 488 (95.3%)</i>	

Cases Available for Processing 557

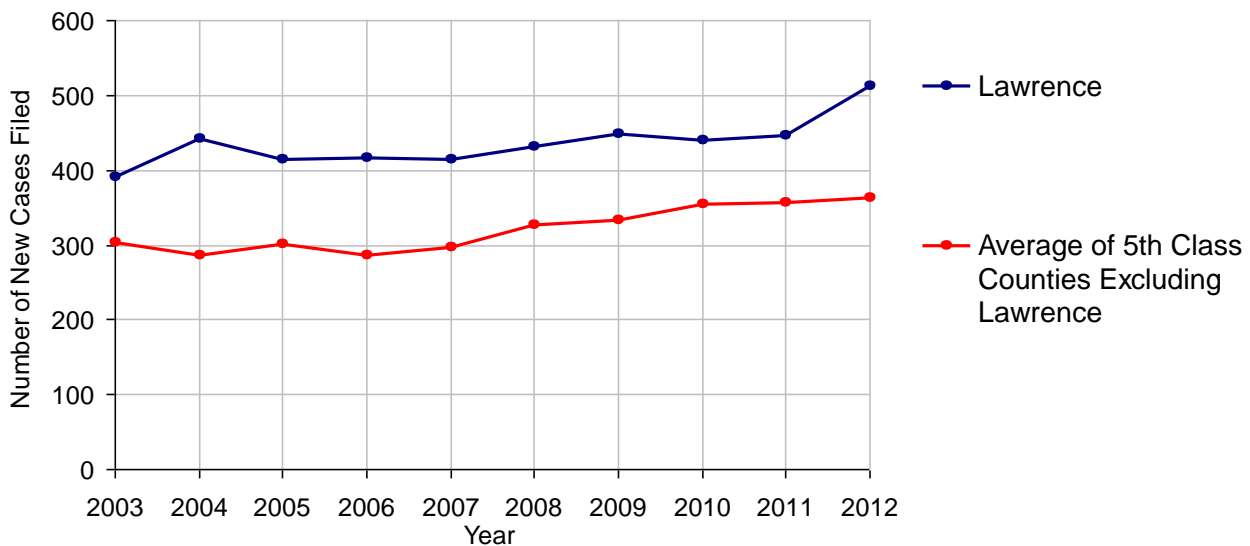
Processed By:

Temporary Order DENIED After Ex Parte Hearing and No Evidentiary Hearing Scheduled	24	4.7%
Temporary Order DISMISSED After Evidentiary Hearing and No Final Order Entered	62	12.2%
Final Order DENIED After Evidentiary Hearing Before a Judge	14	2.8%
Final Order GRANTED After Evidentiary Hearing Before a Judge	71	14.0%
Plaintiff Did Not Appear For Evidentiary Hearing	124	24.5%
Final Order by STIPULATION OR AGREEMENT Between the Parties	124	24.5%
Petition WITHDRAWN by Plaintiff	85	16.8%
TRANSFERRED to Another Jurisdiction	0	
DECEASED Party	3	0.6%
Other	0	

Cases Processed 507 100.0%

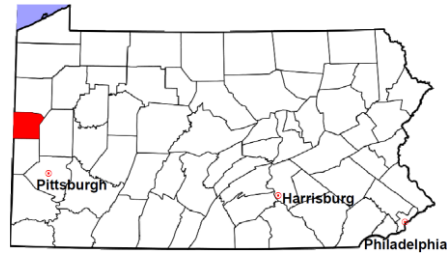
Cases Pending 12/31/2012 50

PFA New Cases Filed, 2003-2012



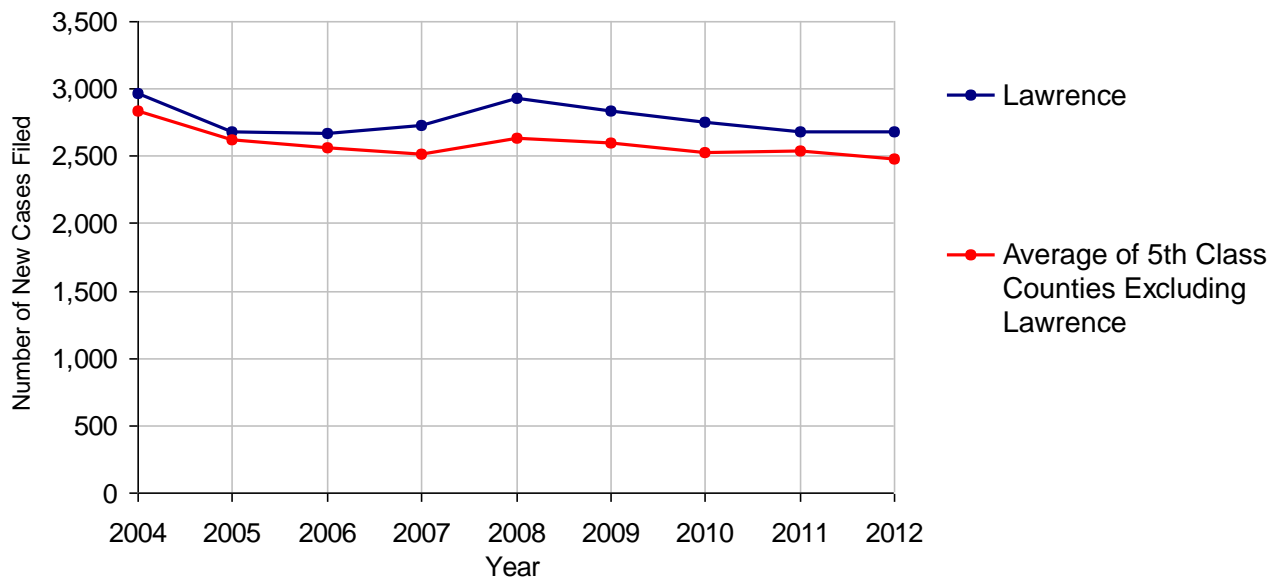
Lawrence County

2012 Population Estimate: 89,871
 Class of County: 5th
 No. of Common Pleas Court Judgeships: 4



2012 Spousal & Child Support	No. of Petitions	
Cases Pending 1/1/2012	517	
New Cases Filed in 2012	2,685	
Dockets Transferred In (+)	20	
Dockets Transferred Out (-)	27	
Cases Available for Processing	3,195	
Processed By:		
Judge	89	3.3%
Intake Officer	2,621	96.7%
Hearing Officer	0	
Other	0	
Cases Processed	2,710	100.0%
Cases Pending 12/31/2012	485	

Spousal & Child Support New Cases Filed, 2004-2012

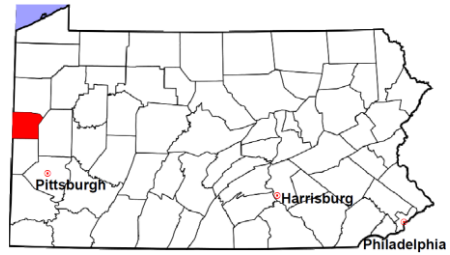


Lawrence County

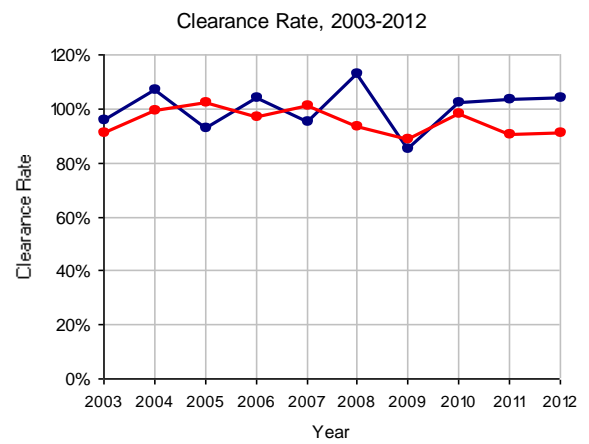
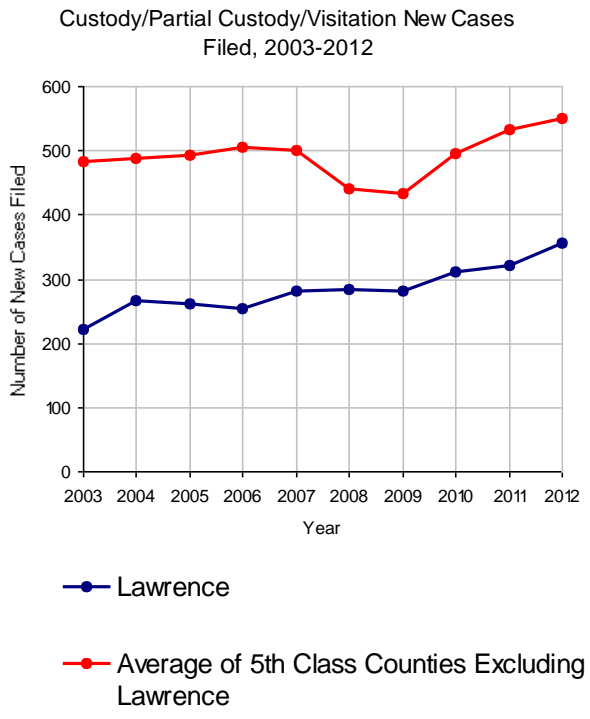
2012 Population Estimate: 89,871

Class of County: 5th

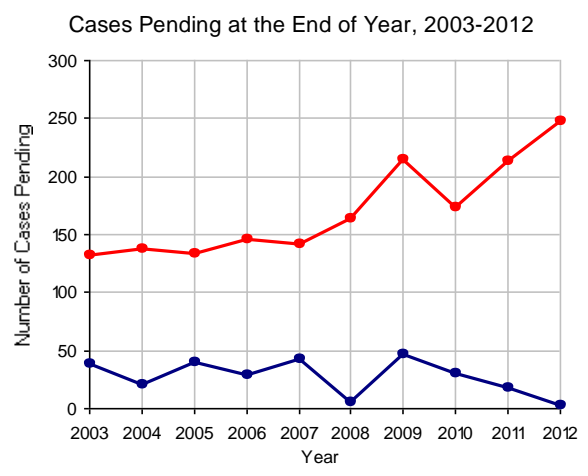
No. of Common Pleas Court Judgeships: 4



2012 Custody/Partial Custody/Visitation	No. of Petitions	
Cases Pending 1/1/2012	18	
New Cases Filed in 2012	355	
Cases Available for Processing	373	
Processed By:		
Judge	368	99.5%
Non-Judicial Officer	0	
Other	2	0.5%
Cases Processed	370	100.0%
Cases Pending 12/31/2012	3	

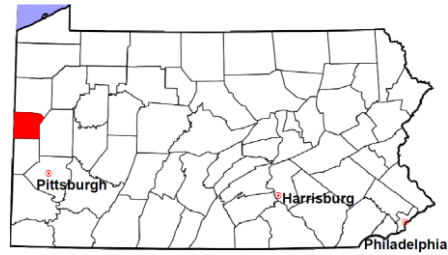


Note: Clearance Rate = Cases Processed / New Cases Filed



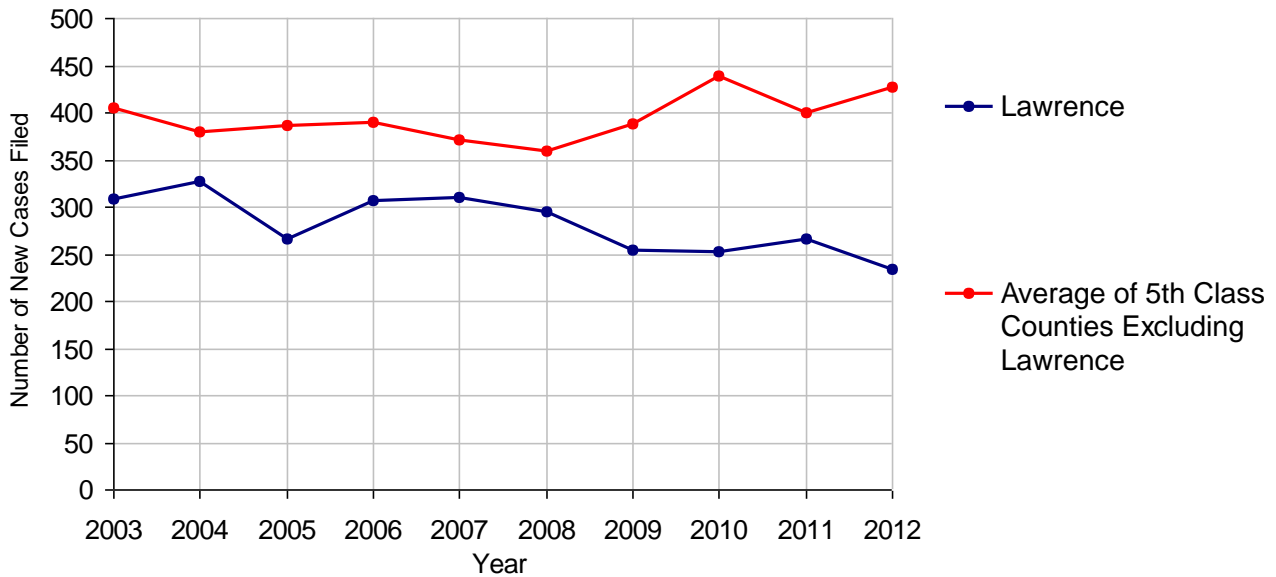
Lawrence County

2012 Population Estimate: 89,871
 Class of County: 5th
 No. of Common Pleas Court Judgeships: 4



2012 Divorce	No. of Petitions	
Cases Pending 1/1/2012	243	
New Cases Filed in 2012	234	
Cases Available for Processing	477	
Processed By:		
Contested Before a Judge	114	40.9%
Contested Before a Master	0	
Uncontested	141	50.5%
Other	24	8.6%
Cases Processed	279	100.0%
Cases Pending 12/31/2012	198	

Divorce New Cases Filed, 2003-2012

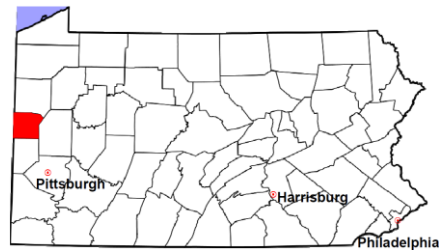


Lawrence County

2012 Population Estimate: 89,871

Class of County: 5th

No. of Common Pleas Court Judgeships: 4



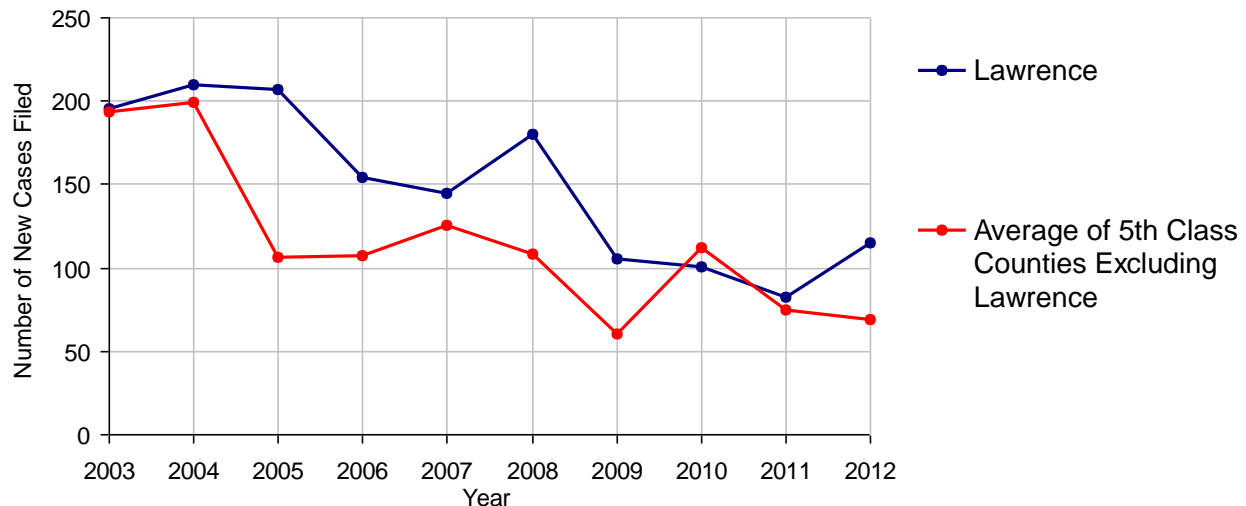
2012 Juvenile Dependency - Active Dependent Inventory



	Abuse/ Neglect	Status Offenses	Total
Cases Pending 1/1/2012	17	0	17
New Petitions Filed in 2012	114	1	115
Other	2	0	2
Total Petitions Available for Processing	133	1	134
Processed by:			
Adjudicated Dependent			
Judge	3	0	3
Master	88	1	89
Adjudicated NOT Dependent			
Judge	5	0	5
Master	1	0	1
Withdrawn/Dismissed/Inactive	0	0	0
Other	16	0	16
Total Petitions Processed	113	1	114
Cases Pending 12/31/2012	20	0	20

Data provided by CPCMS

Abuse/Neglect and Status Offenses New Cases Filed, 2003-2012



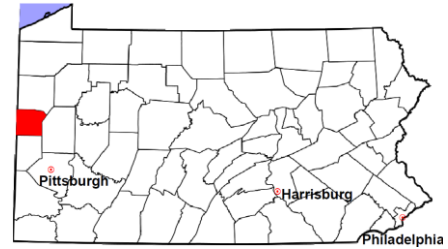
Note: Dependency data for 2002-2010 were collected manually. Dependency data for 2011 and 2012 were provided by CPCMS.

Lawrence County

2012 Population Estimate: 89,871

Class of County: 5th

No. of Common Pleas Court Judgeships: 4



2012 Juvenile Dependency - Adjudicated Dependent Inventory



	Abuse/ Neglect	Status Offenses	Total			
Cases Pending 1/1/2012	121	0	121			
New Adjudicated Dependent Cases	91	1	92			
Other	13	0	13			
Total Adjudicated Dependent Cases	225	1	226			
<u>Court Supervision Terminated:</u>						
Family Reunification	10	18.9%	0	10	18.9%	
Adoption	18	34.0%	0	18	34.0%	
Placement with a Relative/Guardian	14	26.4%	0	14	26.4%	
Aged Out	3	5.7%	0	3	5.7%	
Other Permanency Outcomes*	1	1.9%	0	1	1.9%	
Other**	7	13.2%	0	7	13.2%	
Total Adjudicated Dependent Cases Terminated	53	100.0%	0	100.0%	53	100.0%
Cases Pending 12/31/2012	172		1		173	

Data provided by CPCMS

* Other Permanency Outcomes include: adjudicated delinquent, death due to natural causes, death due to negligence, emancipation, permanent living arrangement, and parent has come forward.

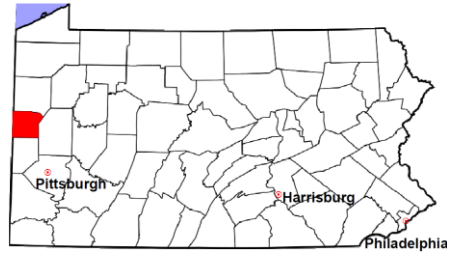
** Other includes cases where court supervision is terminated due to transfer out of jurisdiction, withdrawal and administrative closure.

Lawrence County

2012 Population Estimate: 89,871

Class of County: 5th

No. of Common Pleas Court Judgeships: 4

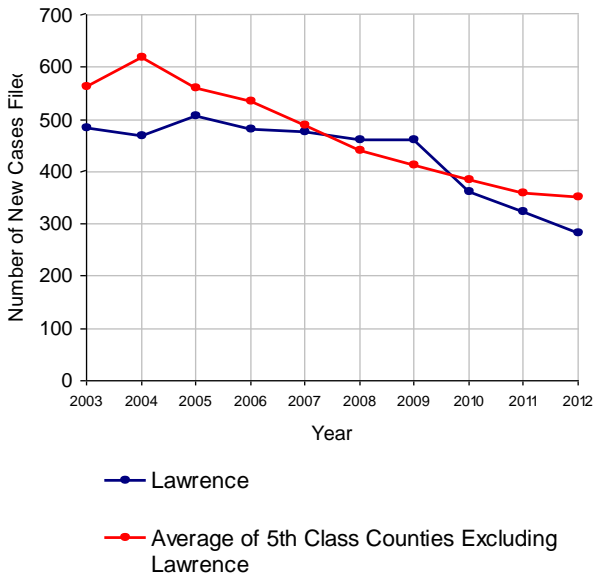


2012 Juvenile Delinquency

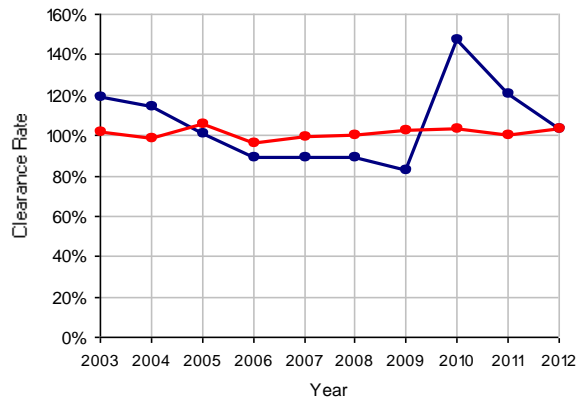
No. of Cases

Cases Pending 1/1/2012	84
New Cases Filed in 2012	283
Cases Available for Processing	367
Processed By:	
Judge	139 47.6%
Non-Judicial Officer	109 37.3%
Other	44 15.1%
Cases Processed	292 100.0%
Cases Pending 12/31/2012	75

Juvenile Delinquency New Cases Filed, 2003-2012

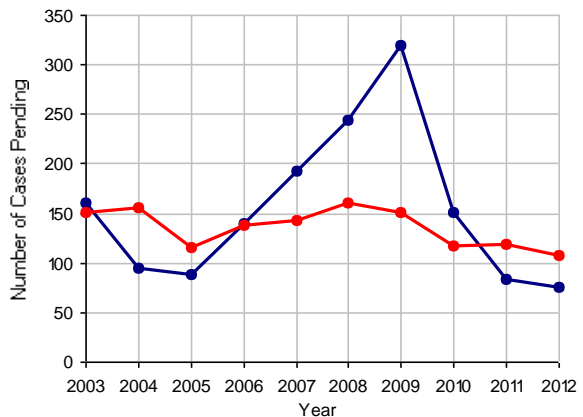


Clearance Rate, 2003-2012



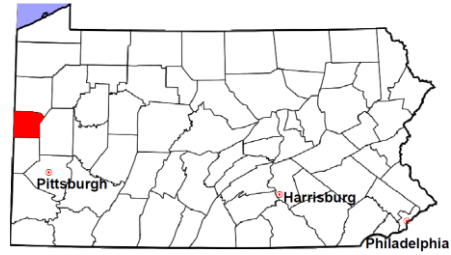
Note: Clearance Rate = Cases Processed / New Cases Filed

Cases Pending at the End of Year, 2003-2012



Lawrence County

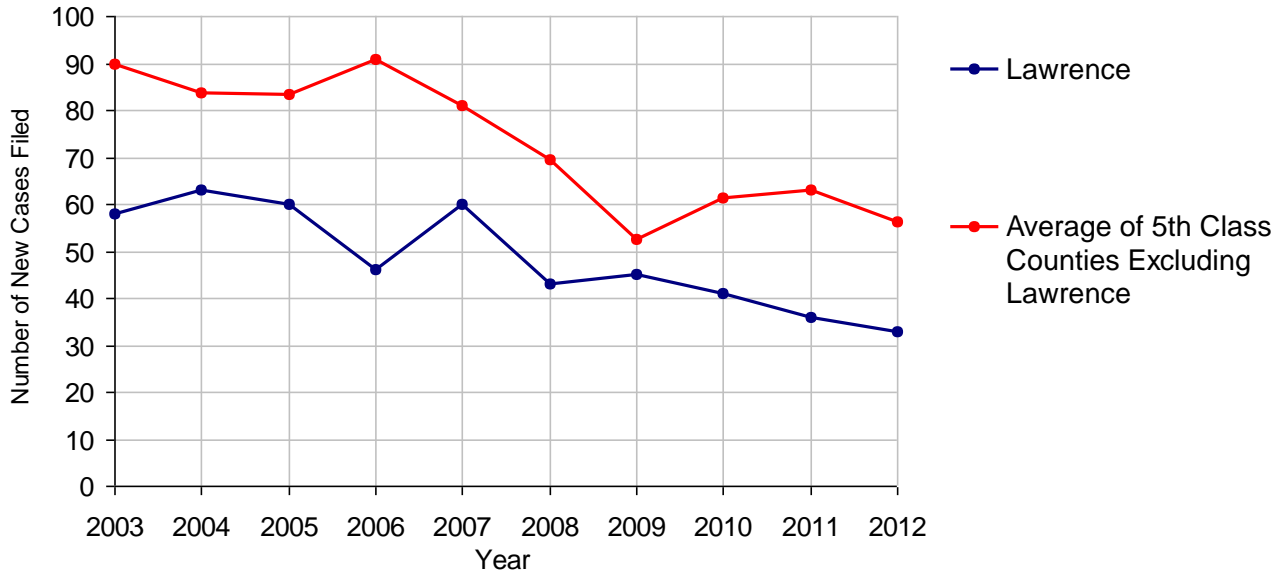
2012 Population Estimate: 89,871
 Class of County: 5th
 No. of Common Pleas Court Judgeships: 4



2012 Accounts	No. of Cases
Cases Pending 1/1/2012	27 (R)
New Cases Filed in 2012	33
Cases Available for Processing	60
Processed By:	
Contested before a Judge	0
Contested before a Non-judicial Officer	0
Uncontested	35 100.0%
Other	0
Cases Processed	35 100.0%
Cases Pending 12/31/2012	25

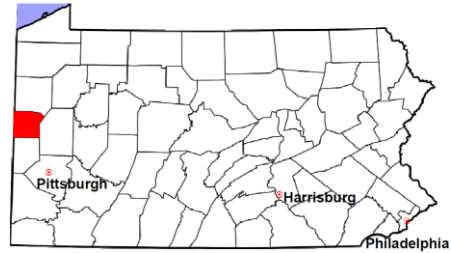
(R) - Revised

Accounts New Cases Filed, 2003-2012



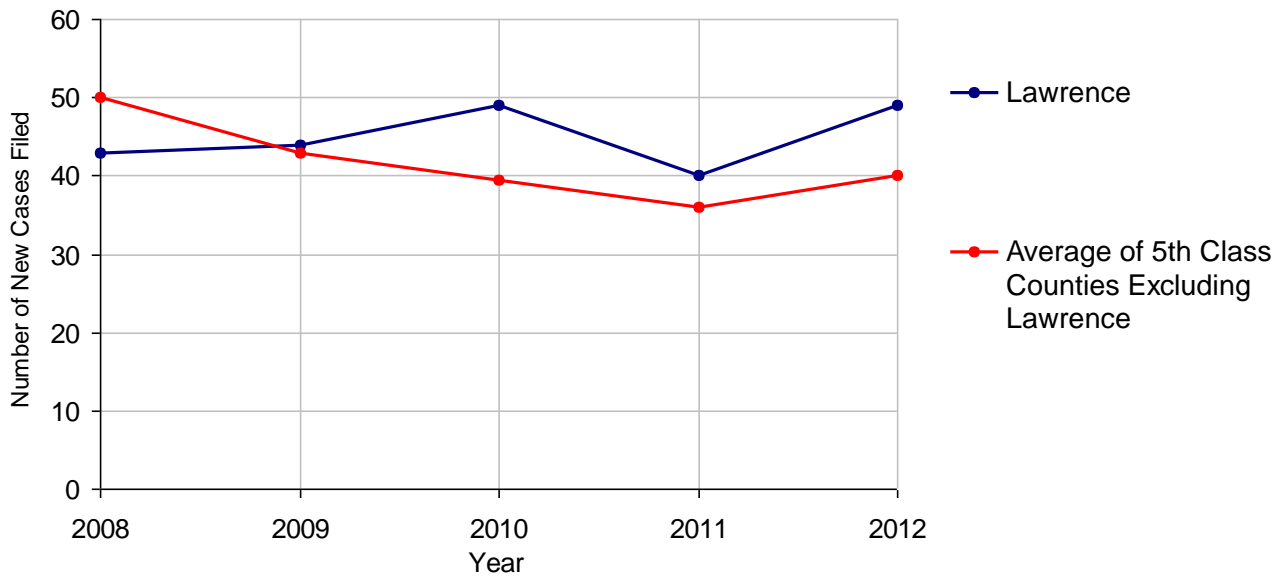
Lawrence County

2012 Population Estimate: 89,871
 Class of County: 5th
 No. of Common Pleas Court Judgeships: 4



2012 Adoptions		No. of Cases	
Cases Pending 1/1/2012		25	
New Cases Filed in 2012		49	
Cases Available for Processing		74	
Processed By:			
Contested before a Judge	Granted	1	2.1%
	Denied	0	
Uncontested	Granted	46	97.9%
	Denied	0	
Other		0	
Cases Processed		47	100.0%
Cases Pending 12/31/2012		27	

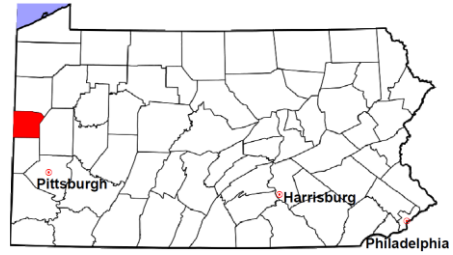
Adoptions New Cases Filed, 2008-2012



Note: Prior to 2008, each petition was counted as one new case, regardless of the number of children listed on the petition. Starting in 2008, each child listed on a petition is counted as a separate case. Therefore, statistics since 2008 should not be compared to statistics prior to 2008.

Lawrence County

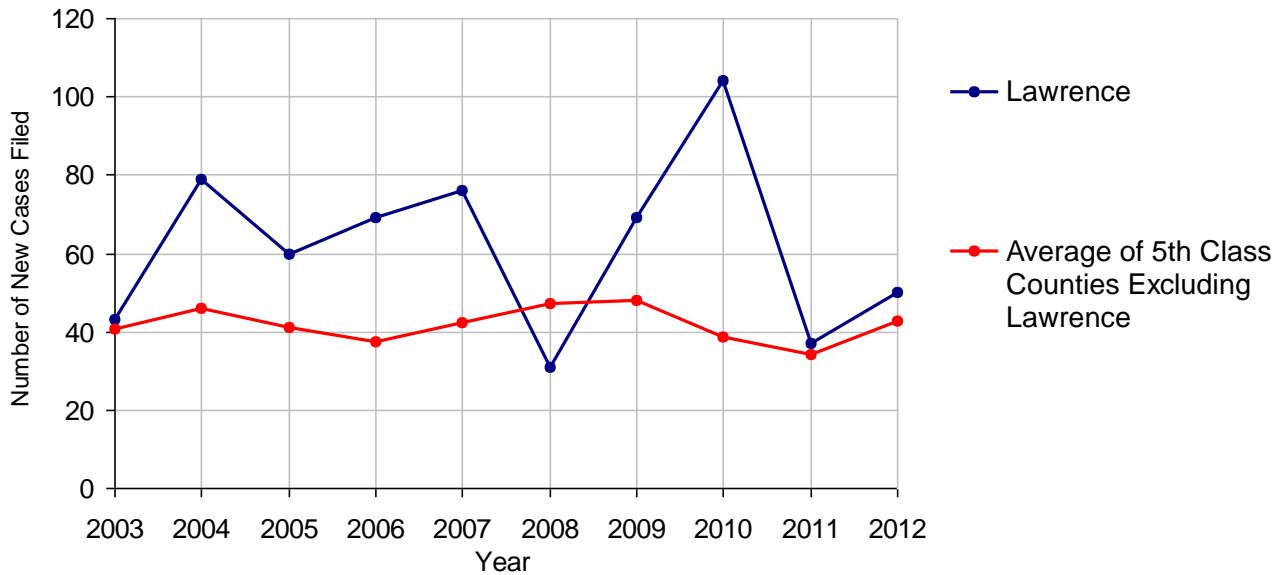
2012 Population Estimate: 89,871
 Class of County: 5th
 No. of Common Pleas Court Judgeships: 4



2012 Relinquishments/Terminations	No. of Cases	
Cases Pending 1/1/2012	78	(R)
New Cases Filed in 2012	50	
Cases Available for Processing	128	
Processed By:		
Contested before a Judge	0	
Uncontested	64	100.0%
Other	0	
Cases Processed	64	100.0%
Cases Pending 12/31/2012	64	

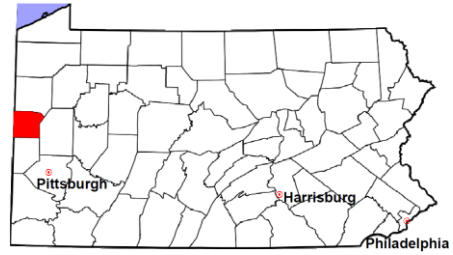
(R) - Revised

Relinquishments/Terminations New Cases Filed, 2003-2012



Lawrence County

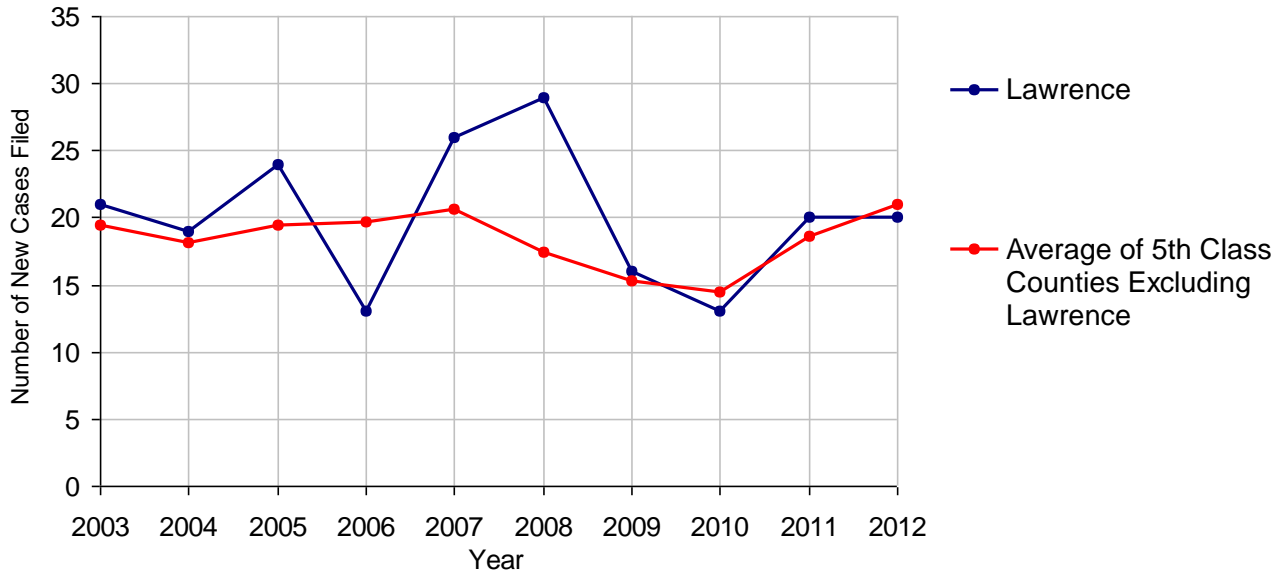
2012 Population Estimate: 89,871
 Class of County: 5th
 No. of Common Pleas Court Judgeships: 4



2012 Appointment of Guardians	No. of Cases
Cases Pending 1/1/2012	22 (R)
New Cases Filed in 2012	20
Cases Available for Processing	42
Processed By:	
Contested before a Judge	0
Uncontested	16 94.1%
Other	1 5.9%
Cases Processed	17 100.0%
Cases Pending 12/31/2012	25

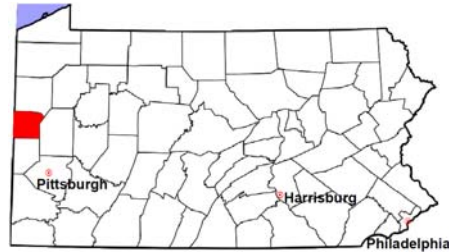
(R) - Revised

Appointment of Guardians New Cases Filed, 2003-2012



Lawrence County

2012 Population Estimate: 89,871
 Class of County: 5th
 No. of Common Pleas Court Judgeships: 4



2012 Jury Yield and Utilization

Jury Yield

Qualification Questionnaires/Summonses Mailed:	13,110	A		
Returned Undeliverable:	1,074	B	8.2%	Of Qualification Questionnaires/Summonses Mailed
Not Responded to:	464	C	3.5%	
the Number of Prospective Jurors:				
Disqualified:	746	D	5.7%	
Exempted:	160	E	1.2%	
Excused:	1,359	F	10.4%	
Deferred to New Term:	2,461	G	18.8%	
Deferred from Previous Term:	1,149	H	8.8%	
Total Number of Qualified Jurors Available for Service:	7,995	I	61.0%	

I=A-B-C-D-E-F-G+H

Jury Utilization

the Number of Jurors:				
Reporting for Service:	1,663		20.8%	Of Jurors Qualified and Available
Told Not to Report for Service:	2,302		28.8%	
Sent to Courtroom for Jury Selection (Voir Dire):	814		48.9%	Of Jurors Reporting for Service
Impanelled or Sworn (jurors/alternates):	193		11.6%	
Removed for Cause/Hardship:	261			
Removed by Peremptory Challenge:	124			

Jury Costs

Total Annual Budget for Juror Operations:	\$129,101.00	J
Average Cost Per Juror:	\$9.85	K

K=J/A

In mid-2011, AOPC began utilizing the National Center for State Courts' Jury Managers' Toolbox for collecting jury data. In 2012, the counties began providing additional jury data which included information about the summoning practices in the counties. With this additional data, we can now see not only how many citizens come to our courthouses every day in anticipation of serving on a jury, but the number of citizens actually summonsed and the number of those summonsed who are exempt, excused or disqualified from service. With this wider view of the jury process, we can determine the efficiency with which our courts operate, and with the assistance of the Jury Managers' Toolbox find guidance in streamlining the jury summonsing practices.