

Lehigh County

2012 Population Estimate: 355,245
 Class of County: 3rd
 No. of Common Pleas Court Judgeships: 10

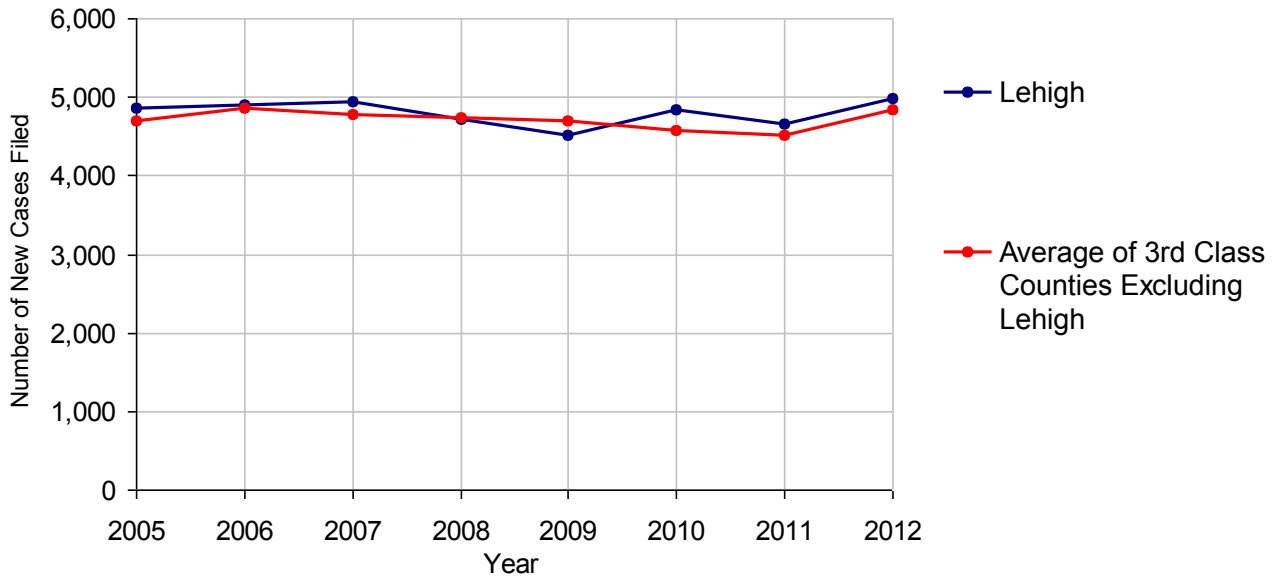


2012 Criminal	No. of Cases
Cases Pending 1/1/2012	1,538
New Cases Filed in 2012	4,979
Reopened Cases	150
Cases Available for Disposition	6,667
Disposed by:	
Withdrawn/Dismissed	142 2.8%
ARD	1,673 32.6%
Guilty Plea	3,019 58.8%
Non-Jury Trial	19 0.4%
Jury Trial	34 0.7%
Inactive	139 2.7%
Other	106 2.1%
Total Cases Disposed	5,132 100.0%
Cases Pending 12/31/2012	1,535
Cases Awaiting Sentencing	87

Age of Pending Cases as of 12/31/2012		
0-60 Days	745	48.5%
61-120 Days	437	28.5%
121-180 Days	179	11.7%
181-240 Days	68	4.4%
241-300 Days	44	2.9%
301-360 Days	26	1.7%
Over 360 Days	36	2.3%
Total	1,535	100.0%

Data provided by CPCMS

Criminal New Cases Filed, 2005-2012

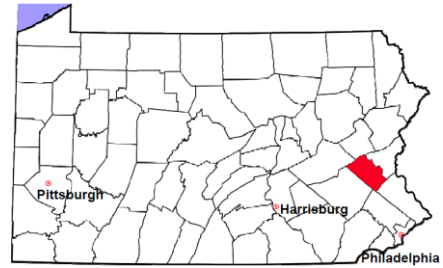


Lehigh County

2012 Population Estimate: 355,245

Class of County: 3rd

No. of Common Pleas Court Judgeships: 10



2012 Criminal - New Cases by Case Type



Case Type	Felony	Misdemeanor	Summary /Ungraded	Total
Person	258	298	0	556
Property	626	701	0	1,327
Drug	396	487	0	883
Weapon	51	26	0	77
Public Order	85	298	1	384
Motor Vehicle - DWI/DUI	0	1,715	0	1,715
Motor Vehicle - Other	4	32	1	37
Other	0	0	0	0
Total	1,420	3,557	2	4,979
	28.5%	71.4%	<0.1%	100.0%

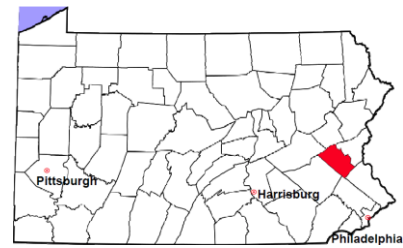
Data provided by CPCMS

Lehigh County

2012 Population Estimate: 355,245

Class of County: 3rd

No. of Common Pleas Court Judgeships: 10

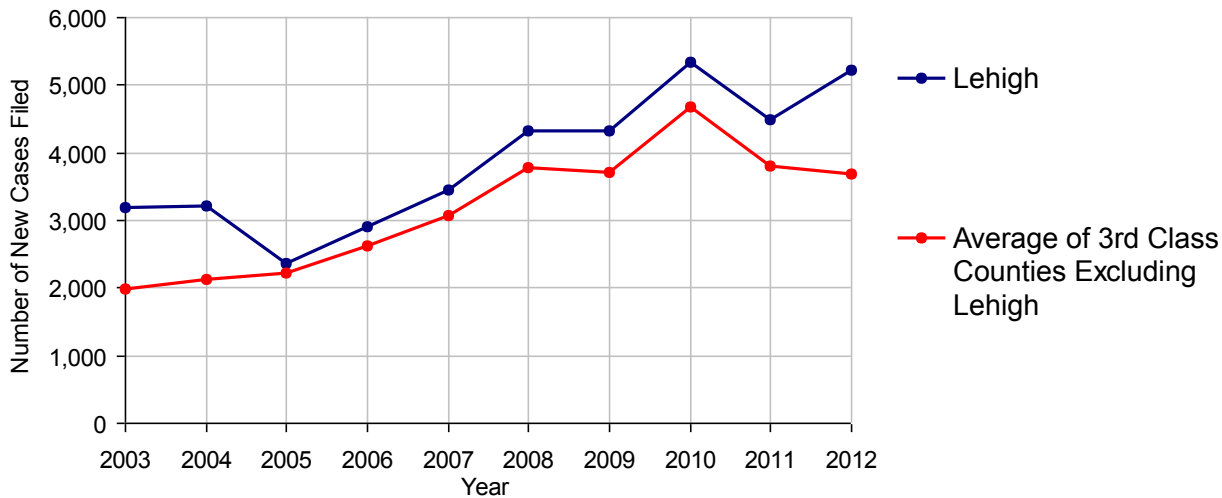


2012 Civil	Civil Action	Other	Total
Cases Pending 1/1/2012	2,052	1,130	3,182
Docketed Cases	2,570	2,648	5,218
Arbitration Appeals	50	7	57
Transferred In	26	1	27
Returned to Active	30	51	81
Cases Available for Processing	4,728	3,837	8,565
Disposed By:			
Default Judgments	769	892	1,661
Cases Decided by Arbitration Board	273	91	364
Dispositive Motions	43	79	122
Settlements	768	292	1,060
Moved to Inactive Status	87	67	154
Transferred/Withdrawn	501	335	836
Administrative Purge	90	2	92
Other	263	242	505
Jury Trial	23	0	23
Non-Jury Trial	19	20	39
Total Cases Disposed	2,836	2,020	4,856
Cases Pending 12/31/2012	1,892	1,817	3,709

Age of Pending Cases as of 12/31/2012 (Civil Action Only)

0-6 months	987	52.2%
7-12 months	392	20.7%
13-18 months	164	8.7%
19-24 months	99	5.2%
25-30 months	68	3.6%
31-36 months	43	2.3%
37-42 months	32	1.7%
43-48 months	17	0.9%
49-54 months	20	1.1%
55-60 months	11	0.6%
61-66 months	14	0.7%
67-72 months	15	0.8%
Over 72 months	30	1.6%
Total	1,892	100.0%

Docketed Cases, 2003-2012



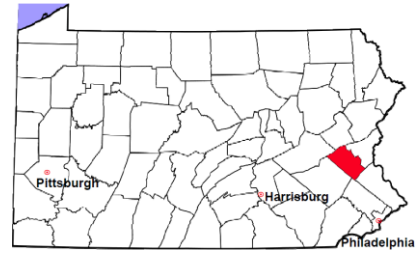
Note: Prior to June 2010, docketed cases under the "Other" category were not reported. The inclusion of these cases starting from June 2010 may contribute to an increase in docketed cases from 2009 to 2010.

Lehigh County

2012 Population Estimate: 355,245

Class of County: 3rd

No. of Common Pleas Court Judgeships: 10



2012 Civil - Docketed Cases Listed by Case Type

TORT 691 13.2%

(does not include mass tort)

Intentional	11
Malicious Prosecution	0
Motor Vehicle	429
Nuisance	2
Premise Liability	135
Product Liability	14
Slander/Libel/Defamation	6
Other	94

MASS TORT 1 <0.1%

Asbestos	0
Tobacco	0
Toxic Tort - DES	0
Toxic Tort - Implant	0
Toxic Waste	0
Other	1

PROFESSIONAL LIABILITY 66 1.3%

Dental	2
Legal	4
Medical Malpractice	58
Other	2

CONTRACT 1,761 33.7%

(does not include judgments)

Buyer Plaintiff	59
Debt Collection: Credit Card	863
Debt Collection: Other	644
Employment Dispute:	
Employment Dispute: Discriminatio	21
Employment Dispute: Other	18
Other	156

REAL PROPERTY 1,795 34.4%

Ejectment*	131
Eminent Domain/Condemnation	10
Ground Rent	0
Landlord/Tenant Dispute	51
Mortgage Forclosures:	
Residential*	1,521
Commercial*	32
Partition of Real Property*	8
Quiet Title*	24
Other*	18

CIVIL APPEALS 823 15.8%

- Administrative Agencies

Board of Assessment*	480
Board of Elections*	0
Dept. of Transportation*	122
Zoning Board*	12
Statutory Appeal - Other*	6
Other*	203

MISCELLANEOUS 81 1.6%

Common Law/	
Statutory Arbitration*	2
Declaratory Judgment*	18
Mandamus*	3
Non-Domestic Relations	
Restraining Order*	1
Quo Warranto*	1
Replevin*	28
Other*	28

TOTAL DOCKETED CASES: 5,218 100%

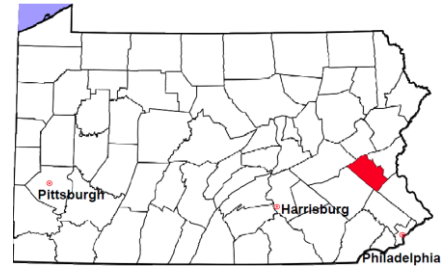
Of the Docketed Cases:

Pro Se Filings:	413	7.9%	Class Action Suits:	1	<0.1%	MDJ Appeals:	326	6.2%
-----------------	-----	------	---------------------	---	-------	--------------	-----	------

* Civil Other

Lehigh County

2012 Population Estimate: 355,245
 Class of County: 3rd
 No. of Common Pleas Court Judgeships: 10



2012 Protection From Abuse

**No. of
Petitions**

Cases Pending 1/1/2012 84

New Cases Filed in 2012 1,378

Of these, Petitions Requesting Temporary Orders: 1,378 (100.0%)

Temporary Orders DENIED: 146 (10.6%), Temporary Orders GRANTED: 1,232 (89.4%)

Cases Available for Processing 1,462

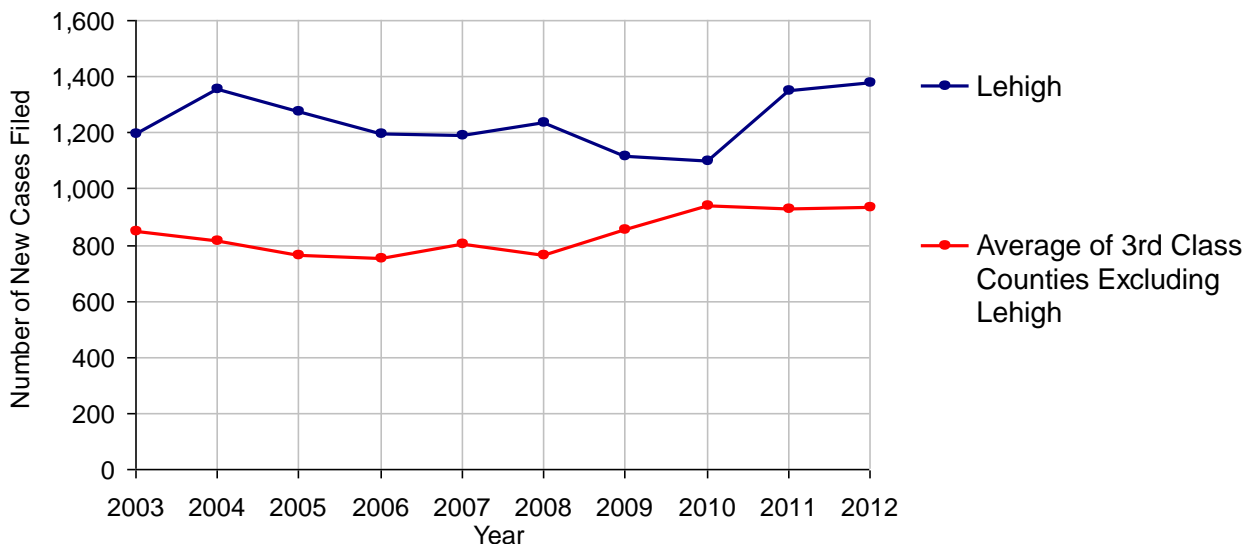
Processed By:

Temporary Order DENIED After Ex Parte Hearing and No Evidentiary Hearing Scheduled	146	10.7%
Temporary Order DISMISSED After Evidentiary Hearing and No Final Order Entered	166	12.2%
Final Order DENIED After Evidentiary Hearing Before a Judge	70	5.1%
Final Order GRANTED After Evidentiary Hearing Before a Judge	445	32.7%
Plaintiff Did Not Appear For Evidentiary Hearing	203	14.9%
Final Order by STIPULATION OR AGREEMENT Between the Parties	115	8.4%
Petition WITHDRAWN by Plaintiff	211	15.5%
TRANSFERRED to Another Jurisdiction	0	
DECEASED Party	0	
Other	5	0.4%

Cases Processed 1,361 100.0%

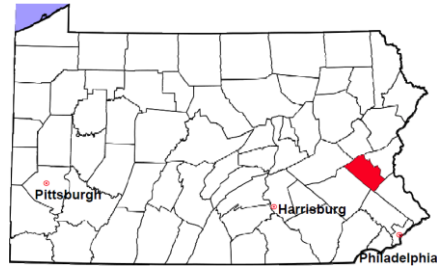
Cases Pending 12/31/2012 101

PFA New Cases Filed, 2003-2012



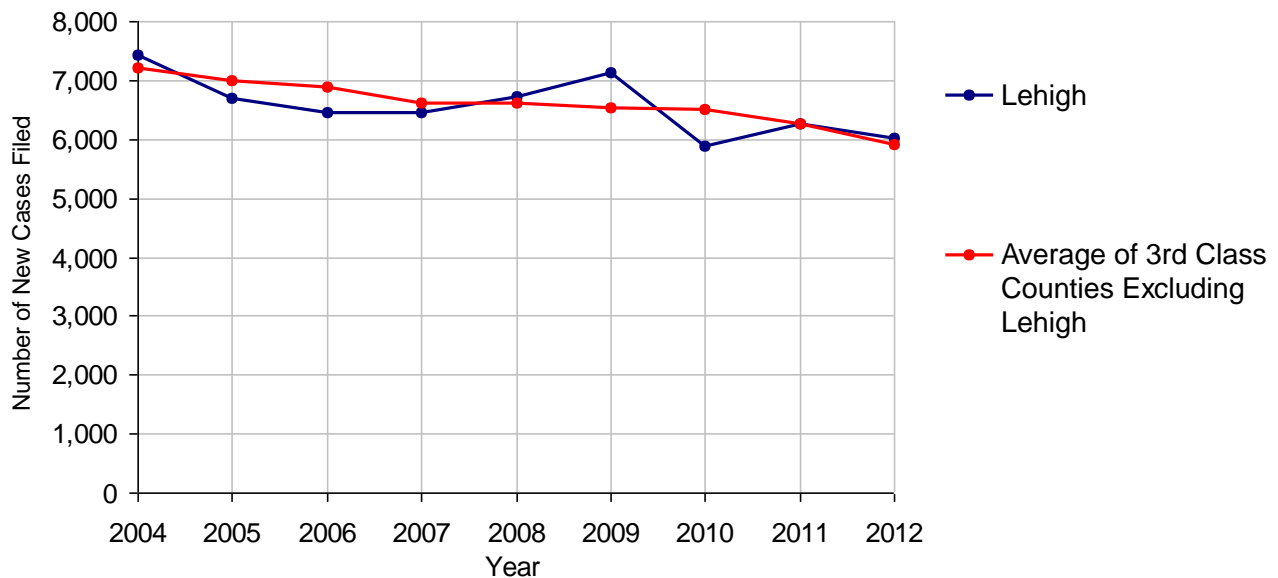
Lehigh County

2012 Population Estimate: 355,245
 Class of County: 3rd
 No. of Common Pleas Court Judgeships: 10



2012 Spousal & Child Support	No. of Petitions	
Cases Pending 1/1/2012	1,322	
New Cases Filed in 2012	6,011	
Dockets Transferred In (+)	140	
Dockets Transferred Out (-)	123	
Cases Available for Processing	7,350	
Processed By:		
Judge	80	1.3%
Intake Officer	5,714	91.6%
Hearing Officer	446	7.1%
Other	0	
Cases Processed	6,240	100.0%
Cases Pending 12/31/2012	1,110	

Spousal & Child Support New Cases Filed, 2004-2012

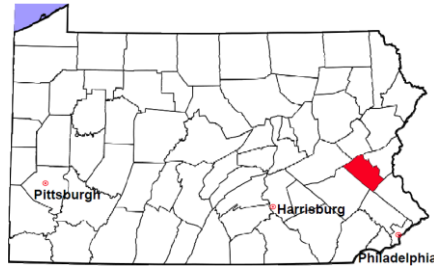


Lehigh County

2012 Population Estimate: 355,245

Class of County: 3rd

No. of Common Pleas Court Judgeships: 10



2012 Custody/Partial Custody/Visitation

No. of
Petitions

Cases Pending 1/1/2012	304
New Cases Filed in 2012	1,706
Cases Available for Processing	2,010

Processed By:

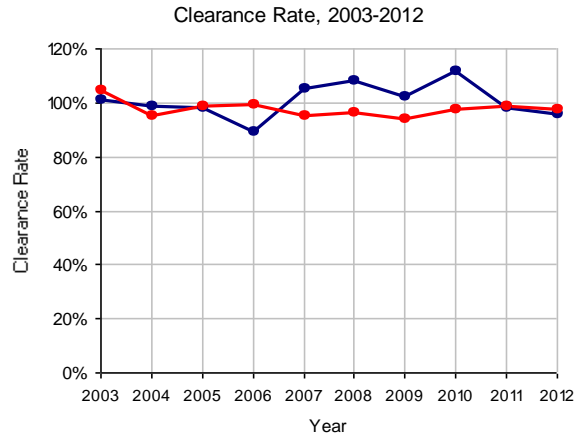
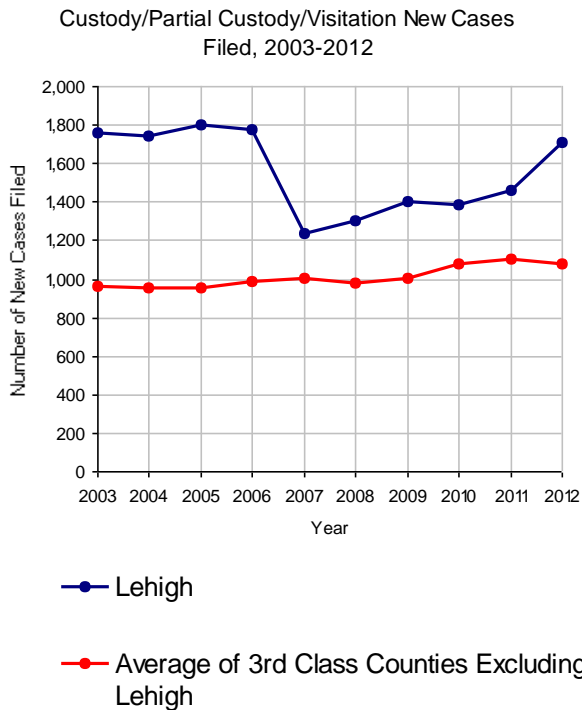
Judge	170	10.4%
Non-Judicial Officer	970	59.3%
Other	495	30.3%

Cases Processed

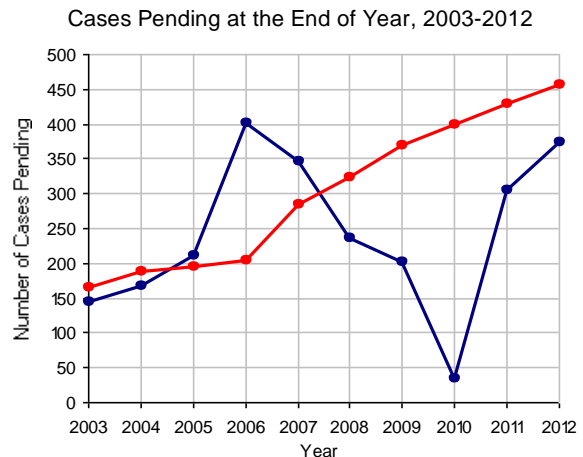
1,635 100.0%

Cases Pending 12/31/2012

375



Note: Clearance Rate = Cases Processed / New Cases Filed



Lehigh County

2012 Population Estimate: 355,245

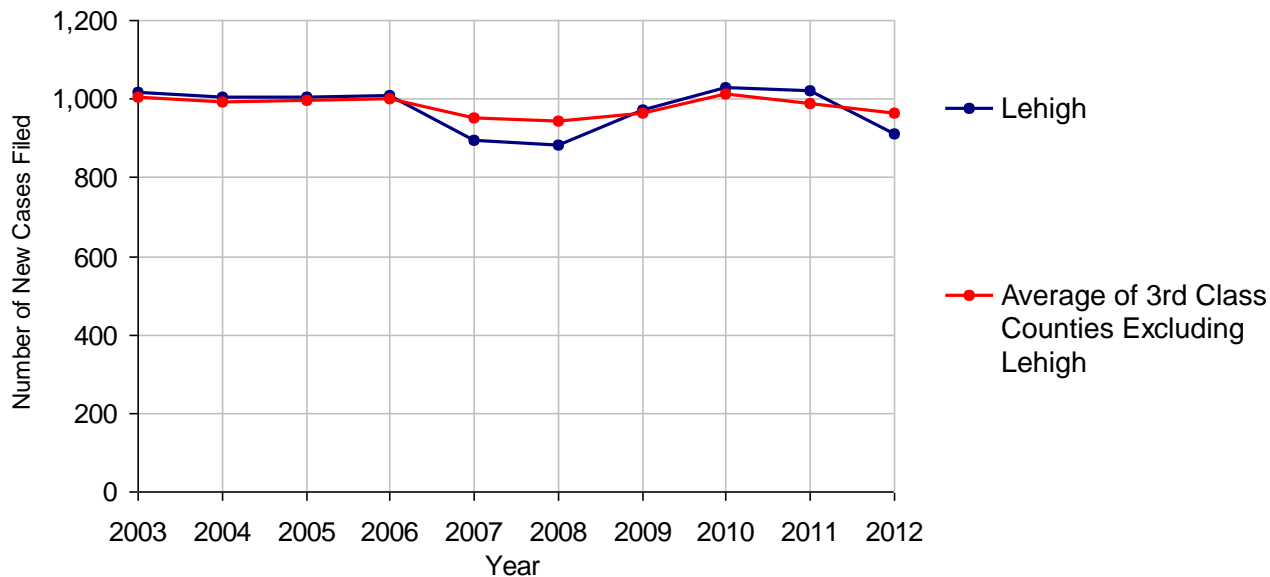
Class of County: 3rd

No. of Common Pleas Court Judgeships: 10



2012 Divorce	No. of Petitions	
Cases Pending 1/1/2012	1,735	
New Cases Filed in 2012	913	
Cases Available for Processing	2,648	
Processed By:		
Contested Before a Judge	0	
Contested Before a Master	151	13.8%
Uncontested	736	67.0%
Other	211	19.2%
Cases Processed	1,098	100.0%
Cases Pending 12/31/2012	1,550	

Divorce New Cases Filed, 2003-2012

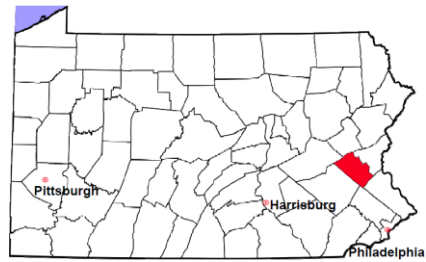


Lehigh County

2012 Population Estimate: 355,245

Class of County: 3rd

No. of Common Pleas Court Judgeships: 10



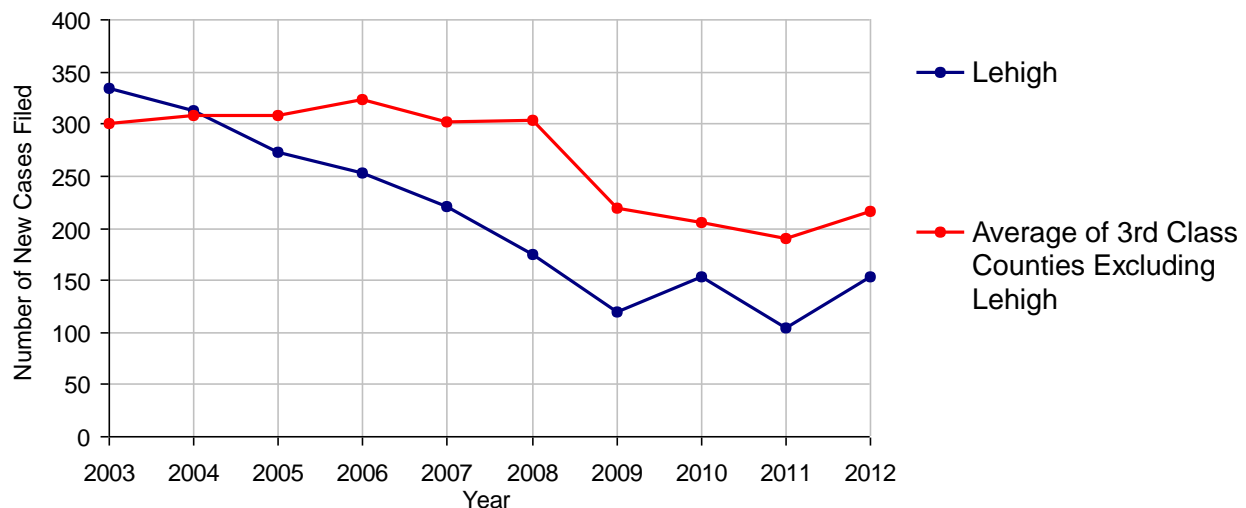
2012 Juvenile Dependency - Active Dependent Inventory



	Abuse/ Neglect	Status Offenses	Total
Cases Pending 1/1/2012	38	0	38
New Petitions Filed in 2012	153	1	154
Other	0	0	0
Total Petitions Available for Processing	191	1	192
Processed by:			
Adjudicated Dependent			
Judge	14	0	14
Master	102	0	102
Adjudicated NOT Dependent			
Judge	2	0	2
Master	14	0	14
Withdrawn/Dismissed/Inactive	44	1	45
Other	0	0	0
Total Petitions Processed	176	1	177
Cases Pending 12/31/2012	15	0	15

Data provided by CPCMS

Abuse/Neglect and Status Offenses New Cases Filed, 2003-2012



Note: Dependency data for 2002-2010 were collected manually. Dependency data for 2011 and 2012 were provided by CPCMS.

Lehigh County

2012 Population Estimate: 355,245

Class of County: 3rd

No. of Common Pleas Court Judgeships: 10



2012 Juvenile Dependency - Adjudicated Dependent Inventory



	Abuse/ Neglect	Status Offenses	Total
Cases Pending 1/1/2012	226	2	228
New Adjudicated Dependent Cases	116	0	116
Other	1	0	1
Total Adjudicated Dependent Cases	343	2	345

Court Supervision Terminated:

Family Reunification	20	18.0%	1	100.0%	21	18.8%
Adoption	57	51.4%	0		57	50.9%
Placement with a Relative/Guardian	22	19.8%	0		22	19.6%
Aged Out	7	6.3%	0		7	6.3%
Other Permanency Outcomes*	1	0.9%	0		1	0.9%
Other**	4	3.6%	0		4	3.6%
Total Adjudicated Dependent Cases Terminated	111	100.0%	1	100.0%	112	100.0%
Cases Pending 12/31/2012	232		1		233	

Data provided by CPCMS

* Other Permanency Outcomes include: adjudicated delinquent, death due to natural causes, death due to negligence, emancipation, permanent living arrangement, and parent has come forward.

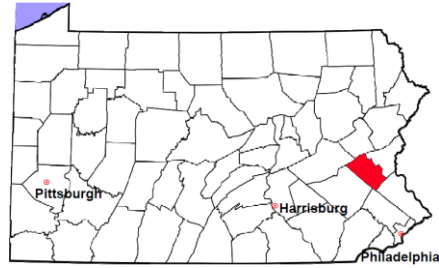
** Other includes cases where court supervision is terminated due to transfer out of jurisdiction, withdrawal and administrative closure.

Lehigh County

2012 Population Estimate: 355,245

Class of County: 3rd

No. of Common Pleas Court Judgeships: 10



2012 Juvenile Delinquency

No. of Cases

Cases Pending 1/1/2012 219

New Cases Filed in 2012 961

Cases Available for Processing 1,180

Processed By:

Judge 217 21.5%

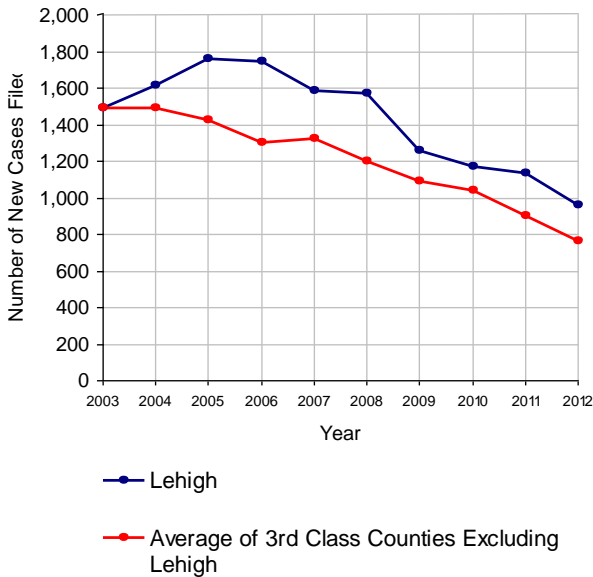
Non-Judicial Officer 595 59.1%

Other 195 19.4%

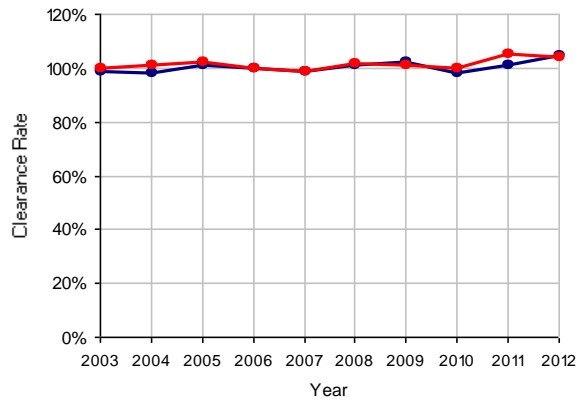
Cases Processed 1,007 100.0%

Cases Pending 12/31/2012 173

Juvenile Delinquency New Cases Filed, 2003-2012

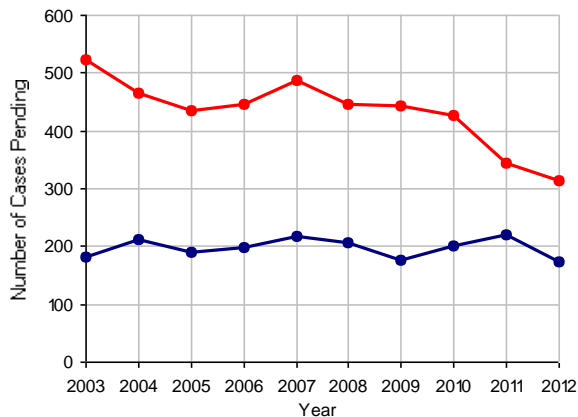


Clearance Rate, 2003-2012



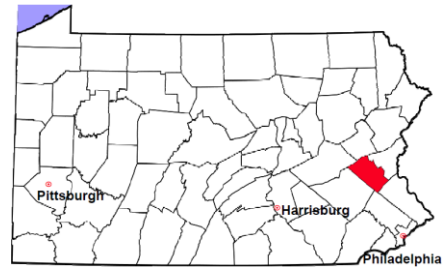
Note: Clearance Rate = Cases Processed / New Cases Filed

Cases Pending at the End of Year, 2003-2012



Lehigh County

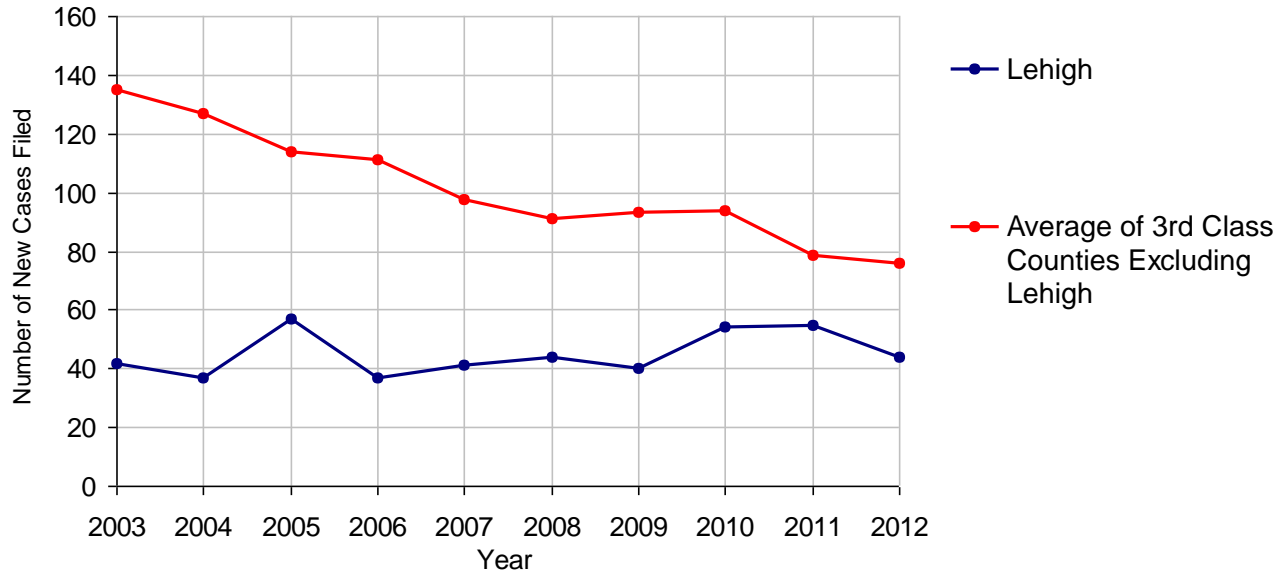
2012 Population Estimate: 355,245
 Class of County: 3rd
 No. of Common Pleas Court Judgeships: 10



2012 Accounts

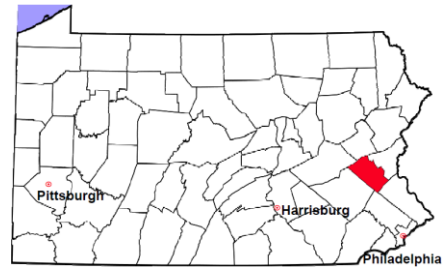
	No. of Cases	
Cases Pending 1/1/2012	25	
New Cases Filed in 2012	44	
Cases Available for Processing	69	
Processed By:		
Contested before a Judge	17	37.0%
Contested before a Non-judicial Officer	0	
Uncontested	25	54.3%
Other	4	8.7%
Cases Processed	46	100.0%
Cases Pending 12/31/2012	23	

Accounts New Cases Filed, 2003-2012



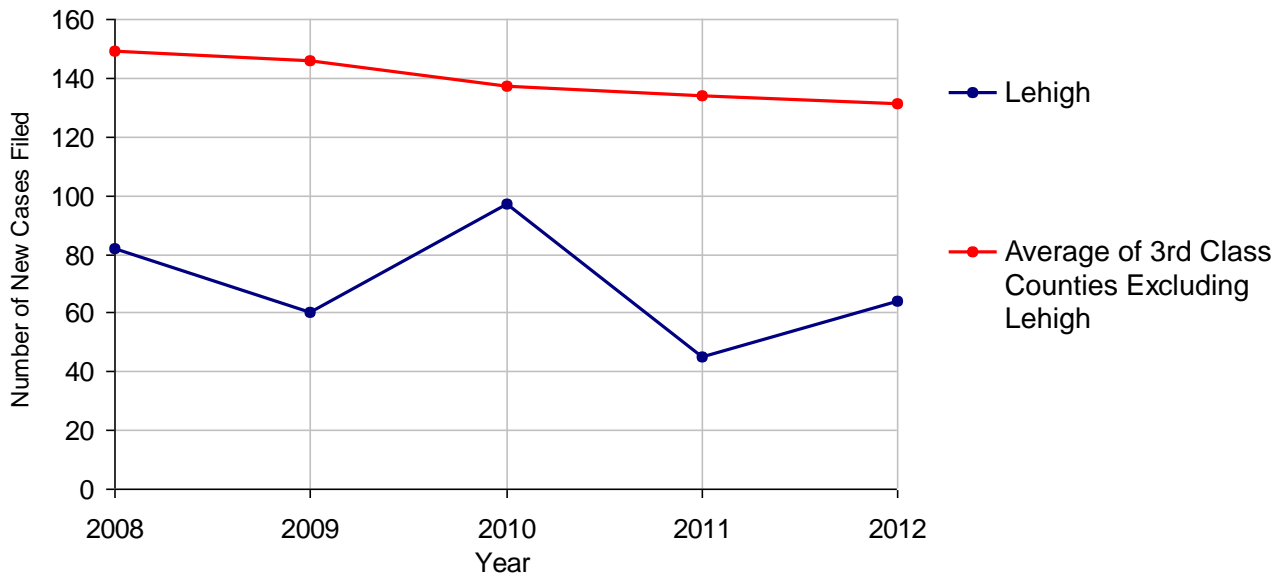
Lehigh County

2012 Population Estimate: 355,245
 Class of County: 3rd
 No. of Common Pleas Court Judgeships: 10



2012 Adoptions		No. of Cases	
Cases Pending 1/1/2012		4	
New Cases Filed in 2012		64	
Cases Available for Processing		68	
Processed By:			
Contested before a Judge	Granted	0	
	Denied	0	
Uncontested	Granted	55	100.0%
	Denied	0	
Other		0	
Cases Processed		55	100.0%
Cases Pending 12/31/2012		13	

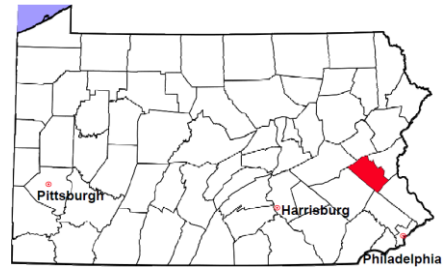
Adoptions New Cases Filed, 2008-2012



Note: Prior to 2008, each petition was counted as one new case, regardless of the number of children listed on the petition. Starting in 2008, each child listed on a petition is counted as a separate case. Therefore, statistics since 2008 should not be compared to statistics prior to 2008.

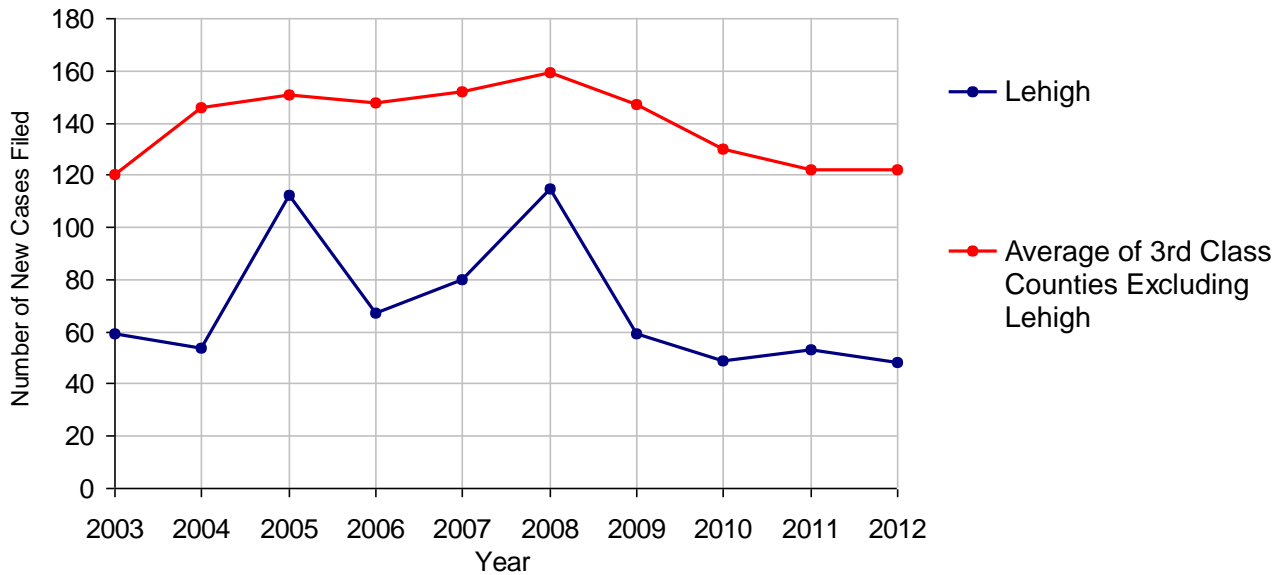
Lehigh County

2012 Population Estimate: 355,245
 Class of County: 3rd
 No. of Common Pleas Court Judgeships: 10



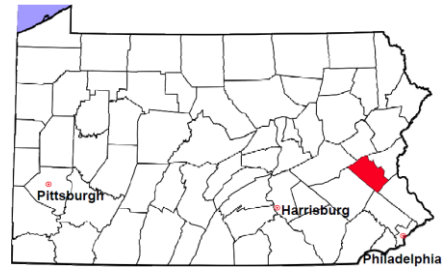
2012 Relinquishments/Terminations	No. of Cases
Cases Pending 1/1/2012	19
New Cases Filed in 2012	48
Cases Available for Processing	67
Processed By:	
Contested before a Judge	15 40.5%
Uncontested	20 54.1%
Other	2 5.4%
Cases Processed	37 100.0%
Cases Pending 12/31/2012	30

Relinquishments/Terminations New Cases Filed, 2003-2012



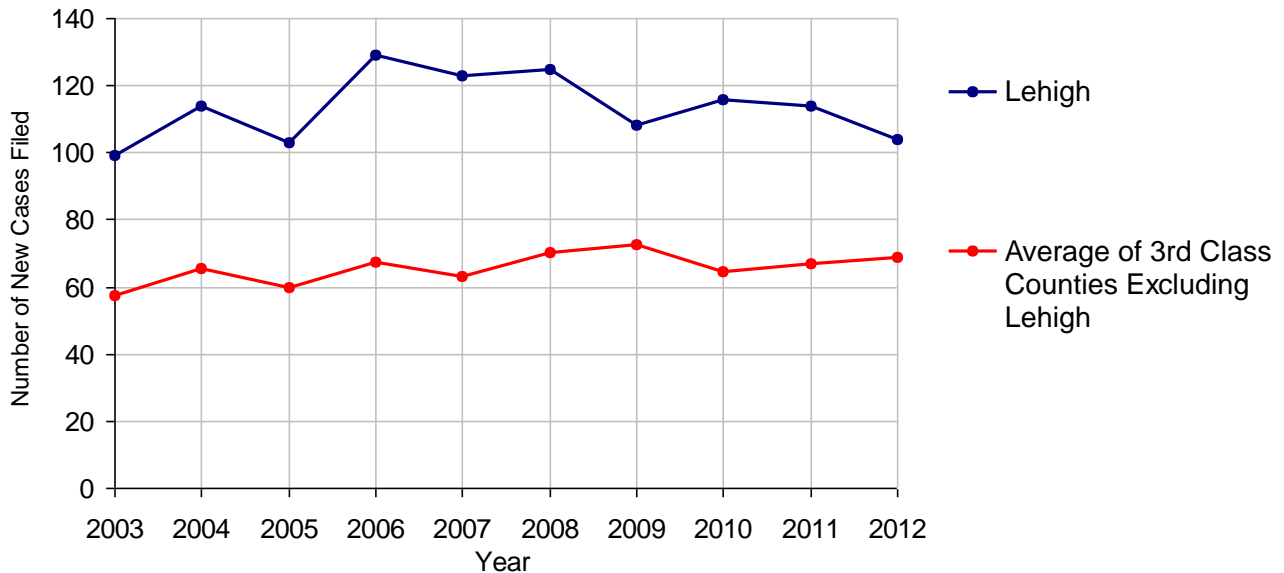
Lehigh County

2012 Population Estimate: 355,245
 Class of County: 3rd
 No. of Common Pleas Court Judgeships: 10



2012 Appointment of Guardians		No. of Cases
Cases Pending 1/1/2012		39
New Cases Filed in 2012		104
Cases Available for Processing		143
Processed By:		
Contested before a Judge	27	22.7%
Uncontested	79	66.4%
Other	13	10.9%
Cases Processed	119	100.0%
Cases Pending 12/31/2012		24

Appointment of Guardians New Cases Filed, 2003-2012



Lehigh County

2012 Population Estimate: 355,245
 Class of County: 3rd
 No. of Common Pleas Court Judgeships: 10



2012 Jury Yield and Utilization

Jury Yield

Qualification Questionnaires/Summonses Mailed:	40,140	A		
Returned Undeliverable:	5,385	B	13.4%	Of Qualification Questionnaires/Summonses Mailed
Not Responded to:	2,966	C	7.4%	
the Number of Prospective Jurors:				
Disqualified:	9,531	D	23.7%	
Exempted:	302	E	0.8%	
Excused:	3,696	F	9.2%	
Deferred to New Term:	2,221	G	5.5%	
Deferred from Previous Term:	2,400	H	6.0%	
Total Number of Qualified Jurors Available for Service:	18,439	I	45.9%	

I=A-B-C-D-E-F-G+H

Jury Utilization

the Number of Jurors:				
Reporting for Service:	4,347		23.6%	Of Jurors Qualified and Available
Told Not to Report for Service:	13,077		70.9%	
Sent to Courtroom for Jury Selection (Voir Dire):	3,089		71.1%	Of Jurors Reporting for Service
Impanelled or Sworn (jurors/alternates):	819		18.8%	
Removed for Cause/Hardship:	711			
Removed by Peremptory Challenge:	786			

Jury Costs

Total Annual Budget for Juror Operations:	\$243,778.00	J
Average Cost Per Juror:	\$6.07	K

K=J/A

In mid-2011, AOPC began utilizing the National Center for State Courts' Jury Managers' Toolbox for collecting jury data. In 2012, the counties began providing additional jury data which included information about the summoning practices in the counties. With this additional data, we can now see not only how many citizens come to our courthouses every day in anticipation of serving on a jury, but the number of citizens actually summoned and the number of those summonsed who are exempt, excused or disqualified from service. With this wider view of the jury process, we can determine the efficiency with which our courts operate, and with the assistance of the Jury Managers' Toolbox find guidance in streamlining the jury summoning practices.