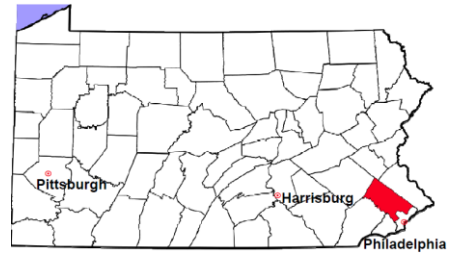


Montgomery County

2012 Population Estimate: 808,460
 Class of County: 2A
 No. of Common Pleas Court Judgeships: 23



2012 Criminal	No. of Cases
----------------------	---------------------

Cases Pending 1/1/2012	5,311
New Cases Filed in 2012	9,582
Reopened Cases	515
Cases Available for Disposition	15,408

Disposed by:

Withdrawn/Dismissed	202	2.2%
ARD	1,719	18.4%
Guilty Plea	6,626	70.9%
Non-Jury Trial	122	1.3%
Jury Trial	30	0.3%
Inactive	533	5.7%
Other	114	1.2%
Total Cases Disposed	9,346	100.0%

Cases Pending 12/31/2012	6,062
Cases Awaiting Sentencing	297

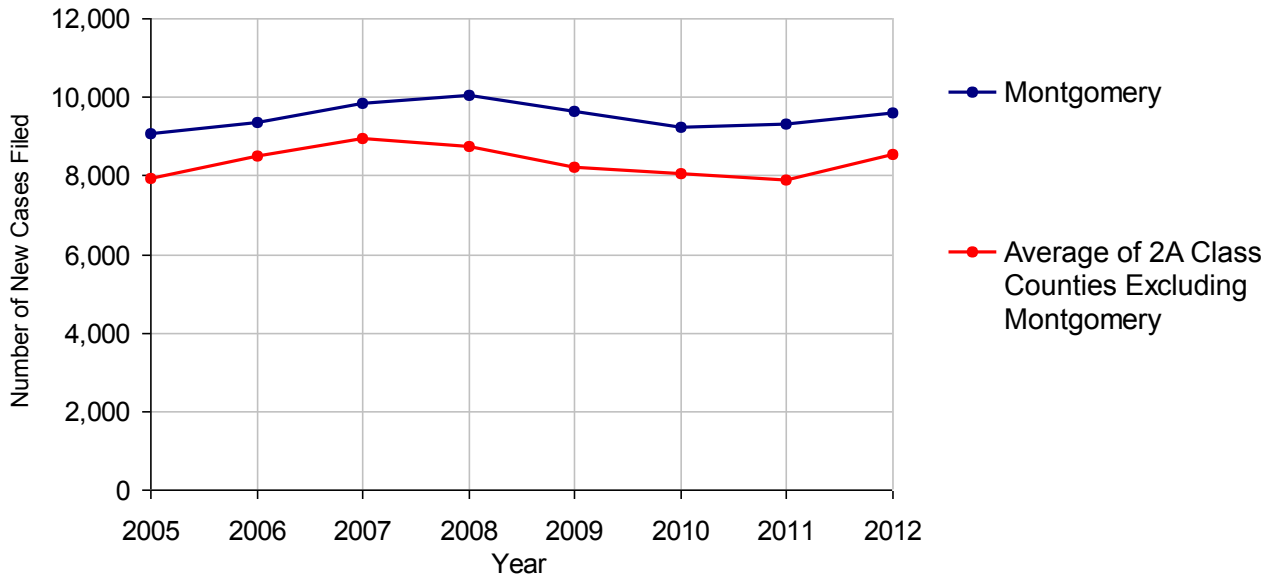
Data provided by CPCMS



Age of Pending Cases as of 12/31/2012

0-60 Days	1,589	26.2%
61-120 Days	1,390	22.9%
121-180 Days	931	15.4%
181-240 Days	636	10.5%
241-300 Days	483	8.0%
301-360 Days	315	5.2%
Over 360 Days	718	11.8%
Total	6,062	100.0%

Criminal New Cases Filed, 2005-2012

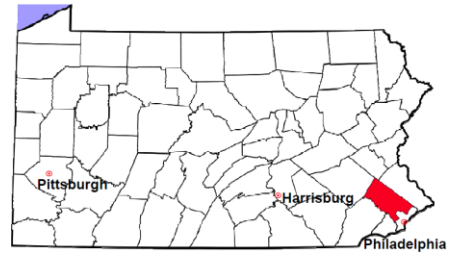


Montgomery County

2012 Population Estimate: 808,460

Class of County: 2A

No. of Common Pleas Court Judgeships: 23



2012 Criminal - New Cases by Case Type



Case Type	Felony	Misdemeanor	Summary /Ungraded	Total
Person	542	706	3	1,251
Property	1,316	1,423	15	2,754
Drug	552	1,291	1	1,844
Weapon	65	34	0	99
Public Order	205	482	6	693
Motor Vehicle - DWI/DUI	0	2,896	1	2,897
Motor Vehicle - Other	1	31	1	33
Other	10	1	0	11
Total	2,691	6,864	27	9,582
	28.1%	71.6%	0.3%	100.0%

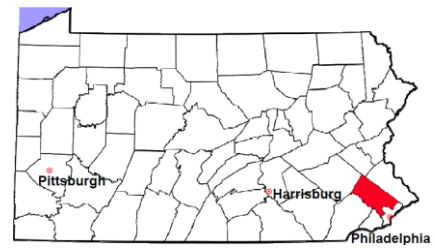
Data provided by CPCMS

Montgomery County

2012 Population Estimate: 808,460

Class of County: 2A

No. of Common Pleas Court Judgeships: 23

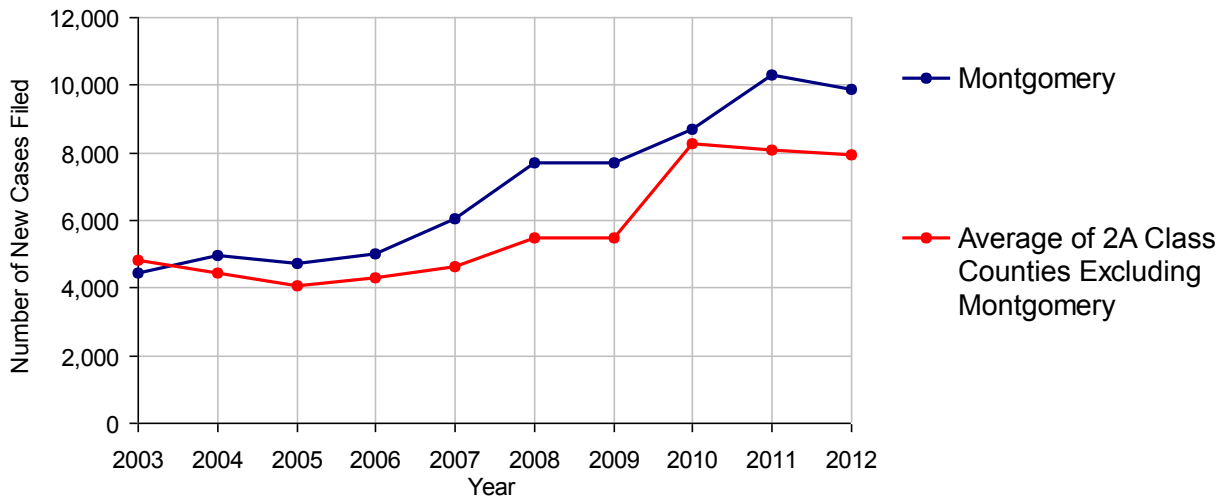


2012 Civil	Civil Action	Other	Total
Cases Pending 1/1/2012	10,812	4,586	15,398
Docketed Cases	5,980	3,874	9,854
Arbitration Appeals	92	15	107
Transferred In	118	5	123
Returned to Active	62	23	85
Cases Available for Processing	17,064	8,503	25,567
Disposed By:			
Default Judgments	1,699	1,334	3,033
Cases Decided by Arbitration Board	322	43	365
Dispositive Motions	0	0	0
Settlements	2,212	726	2,938
Moved to Inactive Status	0	0	0
Transferred/Withdrawn	342	100	442
Administrative Purge	612	110	722
Other	517	0	517
Jury Trial	42	0	42
Non-Jury Trial	12	0	12
Total Cases Disposed	5,758	2,313	8,071
Cases Pending 12/31/2012	11,306	6,190	17,496

Age of Pending Cases as of 12/31/2012 (Civil Action Only)

0-6 months	2,606	23.0%
7-12 months	1,956	17.3%
13-18 months	1,514	13.4%
19-24 months	1,417	12.5%
25-30 months	926	8.2%
31-36 months	569	5.0%
37-42 months	439	3.9%
43-48 months	424	3.8%
49-54 months	360	3.2%
55-60 months	243	2.1%
61-66 months	198	1.8%
67-72 months	193	1.7%
Over 72 months	461	4.1%
Total	11,306	100.0%

Docketed Cases, 2003-2012



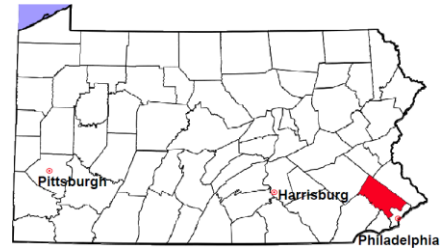
Note: Prior to June 2010, docketed cases under the "Other" category were not reported. The inclusion of these cases starting from June 2010 may contribute to an increase in docketed cases from 2009 to 2010.

Montgomery County

2012 Population Estimate: 808,460

Class of County: 2A

No. of Common Pleas Court Judgeships: 23



2012 Civil - Docketed Cases Listed by Case Type

TORT 1,956 19.8%

(does not include mass tort)

Intentional	54
Malicious Prosecution	5
Motor Vehicle	1,215
Nuisance	4
Premise Liability	314
Product Liability	30
Slander/Libel/Defamation	19
Other	315

MASS TORT 3 <0.1%

Asbestos	0
Tobacco	0
Toxic Tort - DES	0
Toxic Tort - Implant	0
Toxic Waste	0
Other	3

PROFESSIONAL LIABILITY 153 1.6%

Dental	9
Legal	18
Medical Malpractice	95
Other	31

CONTRACT 3,767 38.2%

(does not include judgments)

Buyer Plaintiff	85
Debt Collection: Credit Card	1,812
Debt Collection: Other	1,326
Employment Dispute:	
Employment Dispute: Discriminatio	2
Employment Dispute: Other	51
Other	491

REAL PROPERTY 2,584 26.2%

Ejectment*	165
Eminent Domain/Condemnation	30
Ground Rent	2
Landlord/Tenant Dispute	99
Mortgage Foreclosure:	
Residential*	2,056
Commercial*	34
Partition of Real Property*	13
Quiet Title*	30
Other*	155

CIVIL APPEALS 839 8.5%

- Administrative Agencies

Board of Assessment*	74
Board of Elections*	140
Dept. of Transportation*	277
Zoning Board*	20
Statutory Appeal - Other*	17
Other*	311

MISCELLANEOUS 552 5.6%

Common Law/	
Statutory Arbitration*	5
Declaratory Judgment*	42
Mandamus*	5
Non-Domestic Relations	
Restraining Order*	46
Quo Warranto*	0
Replevin*	25
Other*	429

TOTAL DOCKETED CASES: 9,854 100%

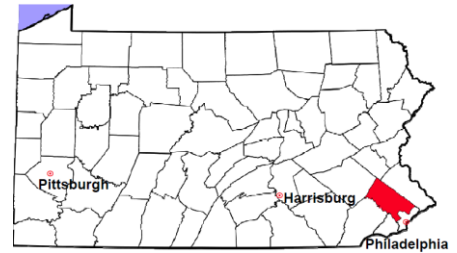
Of the Docketed Cases:

Pro Se Filings:	121	1.2%	Class Action Suits:	9	0.1%	MDJ Appeals:	277	2.8%
-----------------	-----	------	---------------------	---	------	--------------	-----	------

* Civil Other

Montgomery County

2012 Population Estimate: 808,460
 Class of County: 2A
 No. of Common Pleas Court Judgeships: 23



2012 Protection From Abuse

**No. of
Petitions**

Cases Pending 1/1/2012 275

New Cases Filed in 2012 1,498

Of these, Petitions Requesting Temporary Orders: 1,498 (100.0%)

Temporary Orders DENIED: 146 (9.7%), Temporary Orders GRANTED: 1,352 (90.3%)

Cases Available for Processing

1,773

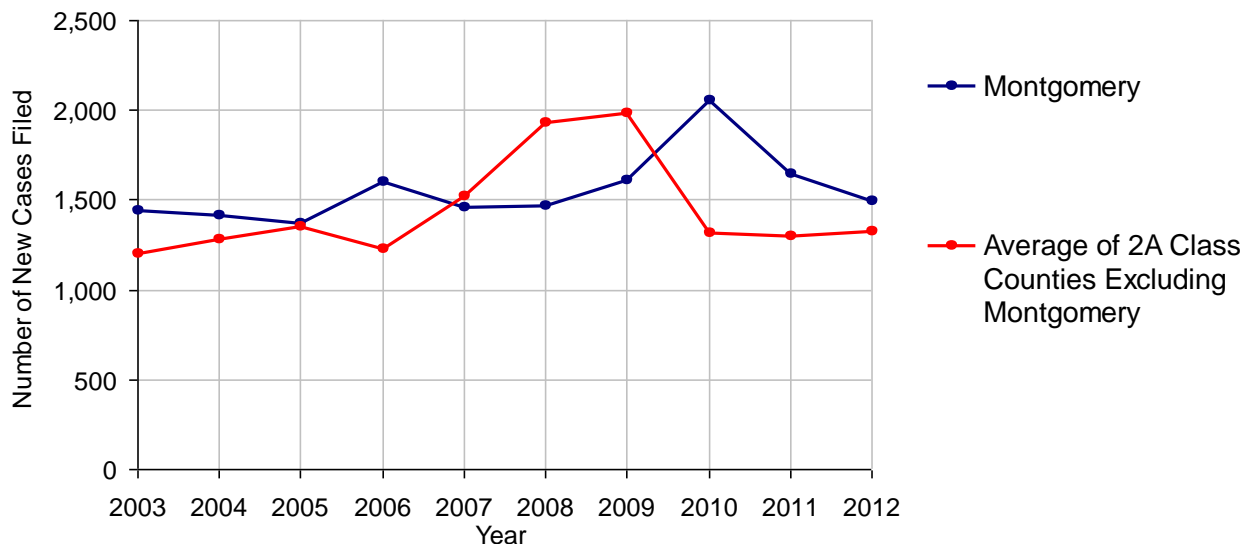
Processed By:

Temporary Order DENIED After Ex Parte Hearing and No Evidentiary Hearing Scheduled	87	5.6%
Temporary Order DISMISSED After Evidentiary Hearing and No Final Order Entered	0	
Final Order DENIED After Evidentiary Hearing Before a Judge	141	9.1%
Final Order GRANTED After Evidentiary Hearing Before a Judge	220	14.2%
Plaintiff Did Not Appear For Evidentiary Hearing	312	20.1%
Final Order by STIPULATION OR AGREEMENT Between the Parties	319	20.6%
Petition WITHDRAWN by Plaintiff	468	30.2%
TRANSFERRED to Another Jurisdiction	0	
DECEASED Party	2	0.1%
Other	0	

Cases Processed 1,549 100.0%

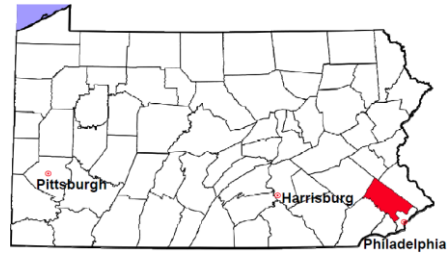
Cases Pending 12/31/2012 224

PFA New Cases Filed, 2003-2012



Montgomery County

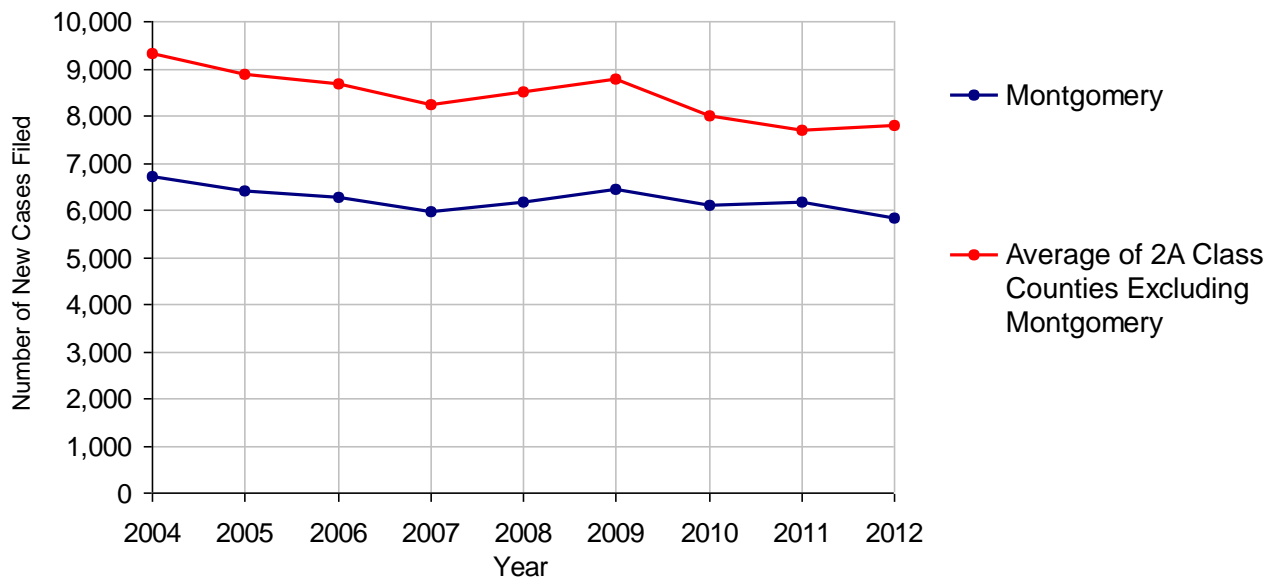
2012 Population Estimate: 808,460
 Class of County: 2A
 No. of Common Pleas Court Judgeships: 23



2012 Spousal & Child Support	No. of Petitions *	
Cases Pending 1/1/2012	1,549	
New Cases Filed in 2012	5,821	
Dockets Transferred In (+)	74	
Dockets Transferred Out (-)	72	
Cases Available for Processing	7,372	
Processed By:		
Judge	248	4.2%
Intake Officer	4,004	67.4%
Hearing Officer	1,635	27.5%
Other	56	0.9%
Cases Processed	5,943	100.0%
Cases Pending 12/31/2012	1,429	

* "Exceptions" from a Master/Conference Officer are not reported by PACES.

Spousal & Child Support New Cases Filed, 2004-2012

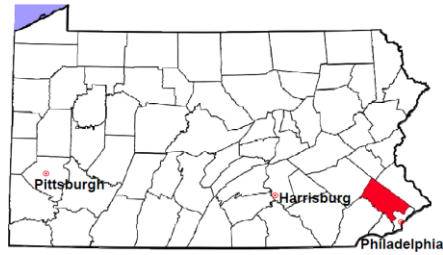


Montgomery County

2012 Population Estimate: 808,460

Class of County: 2A

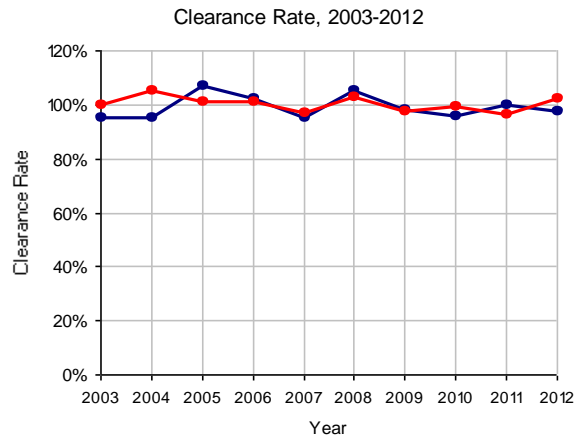
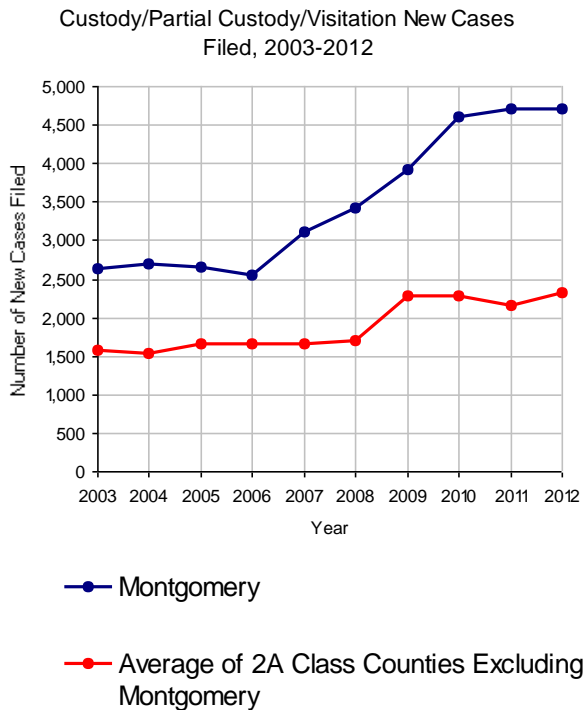
No. of Common Pleas Court Judgeships: 23



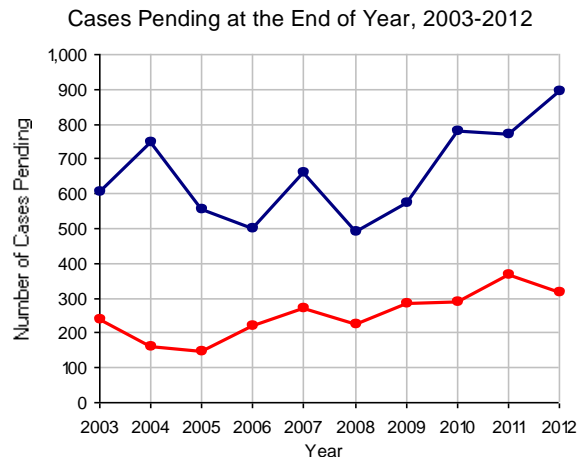
2012 Custody/Partial Custody/Visitation

No. of
Petitions

Cases Pending 1/1/2012	771
New Cases Filed in 2012	4,719
Cases Available for Processing	5,490
Processed By:	
Judge	2,631 57.2%
Non-Judicial Officer	1,559 33.9%
Other	406 8.8%
Cases Processed	4,596 100.0%
Cases Pending 12/31/2012	894

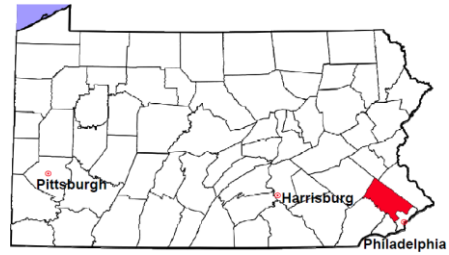


Note: Clearance Rate = Cases Processed / New Cases Filed



Montgomery County

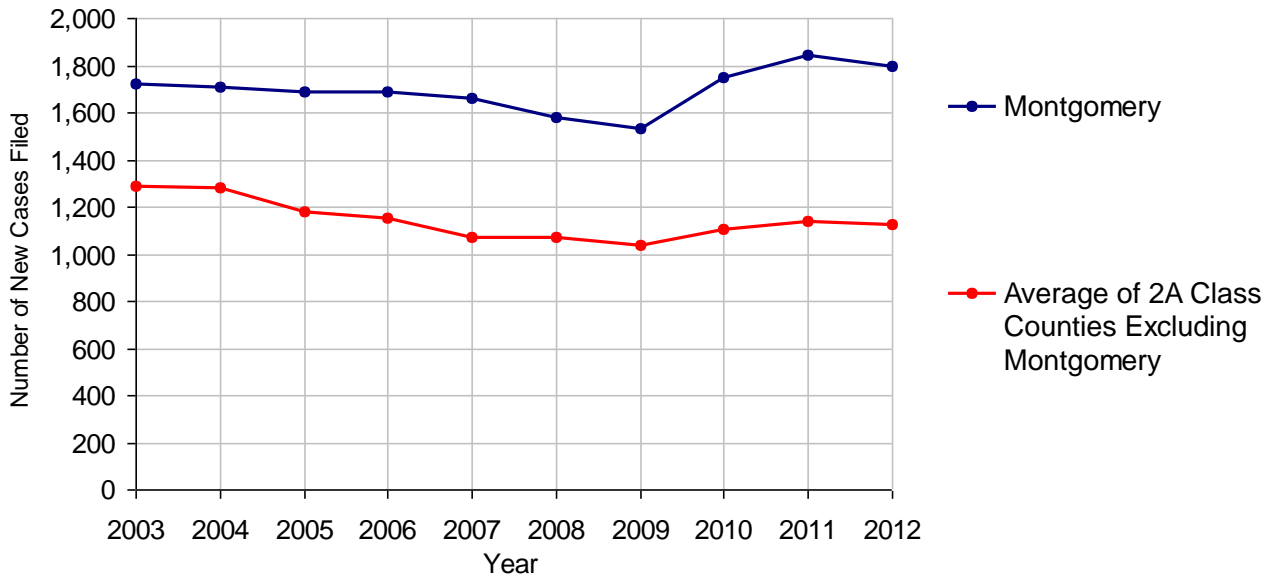
2012 Population Estimate: 808,460
 Class of County: 2A
 No. of Common Pleas Court Judgeships: 23



2012 Divorce	No. of Petitions	
Cases Pending 1/1/2012	2,780	
New Cases Filed in 2012	1,795	
Cases Available for Processing	4,575	
Processed By:		
Contested Before a Judge	0	
Contested Before a Master	0	
Uncontested	1,779 ^(O)	100.0%
Other	0	
Cases Processed	1,779	100.0%
Cases Pending 12/31/2012	2,796	

(O) - Overinclusive, includes cases in which a judge held an evidentiary hearing.

Divorce New Cases Filed, 2003-2012

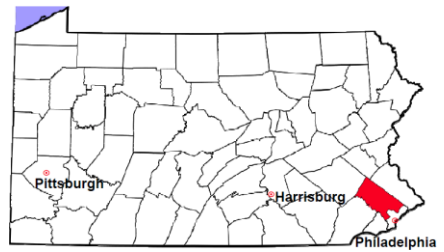


Montgomery County

2012 Population Estimate: 808,460

Class of County: 2A

No. of Common Pleas Court Judgeships: 23



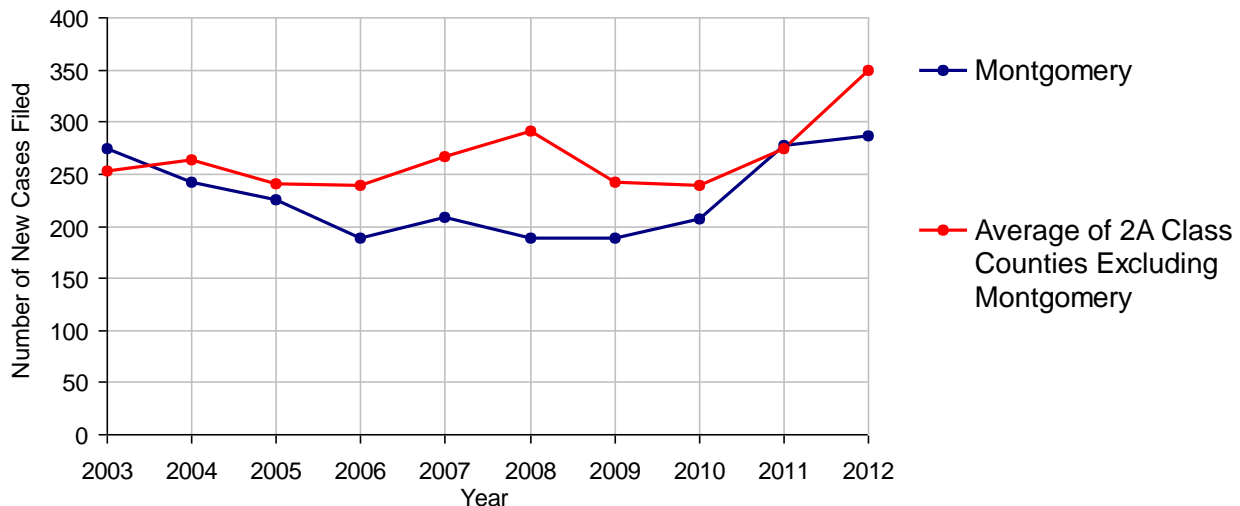
2012 Juvenile Dependency - Active Dependent Inventory



	Abuse/ Neglect	Status Offenses	Total
Cases Pending 1/1/2012	120	198	318
New Petitions Filed in 2012	261	25	286
Other	14	0	14
Total Petitions Available for Processing	395	223	618
Processed by:			
Adjudicated Dependent			
Judge	186	3	189
Master	13	0	13
Adjudicated NOT Dependent			
Judge	0	0	0
Master	0	0	0
Withdrawn/Dismissed/Inactive	0	0	0
Other	10	3	13
Total Petitions Processed	209	6	215
Cases Pending 12/31/2012	186	217	403

Data provided by CPCMS

Abuse/Neglect and Status Offenses New Cases Filed, 2003-2012



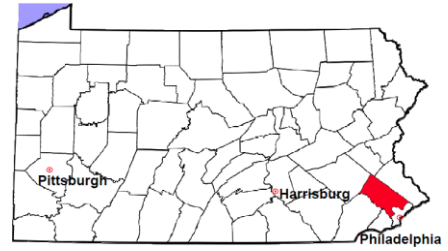
Note: Dependency data for 2002-2010 were collected manually. Dependency data for 2011 and 2012 were provided by CPCMS.

Montgomery County

2012 Population Estimate: 808,460

Class of County: 2A

No. of Common Pleas Court Judgeships: 23



2012 Juvenile Dependency - Adjudicated Dependent Inventory



	Abuse/ Neglect	Status Offenses	Total
Cases Pending 1/1/2012	491	84	575
New Adjudicated Dependent Cases	199	3	202
Other	11	3	14
Total Adjudicated Dependent Cases	701	90	791

Court Supervision Terminated:

Family Reunification	37	24.7%	0	37	23.9%	
Adoption	19	12.7%	0	19	12.3%	
Placement with a Relative/Guardian	59	39.3%	4	80.0%	63	40.6%
Aged Out	16	10.7%	1	20.0%	17	11.0%
Other Permanency Outcomes*	0		0		0	
Other**	19	12.7%	0		19	12.3%
Total Adjudicated Dependent Cases Terminated	150	100.0%	5	100.0%	155	100.0%
Cases Pending 12/31/2012	551		85		636	

Data provided by CPCMS

* Other Permanency Outcomes include: adjudicated delinquent, death due to natural causes, death due to negligence, emancipation, permanent living arrangement, and parent has come forward.

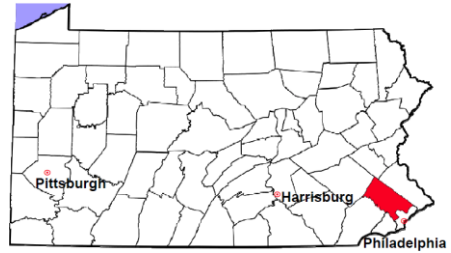
** Other includes cases where court supervision is terminated due to transfer out of jurisdiction, withdrawal and administrative closure.

Montgomery County

2012 Population Estimate: 808,460

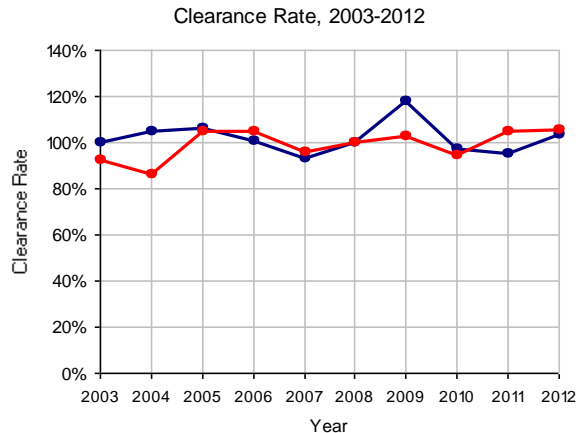
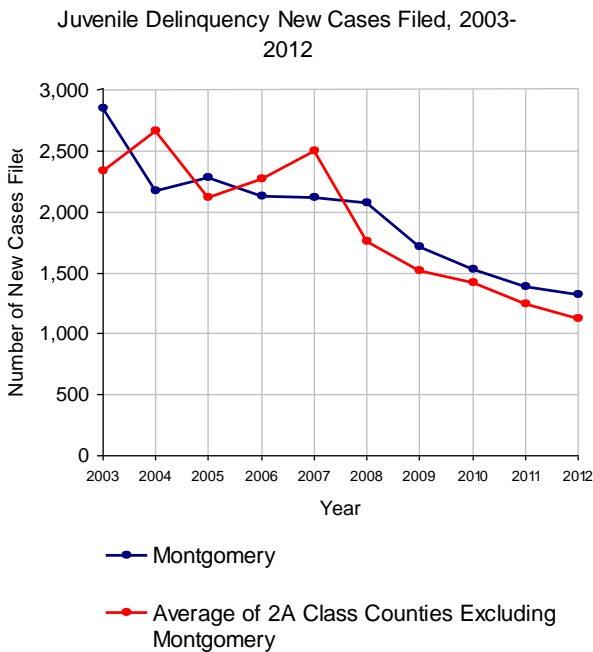
Class of County: 2A

No. of Common Pleas Court Judgeships: 23

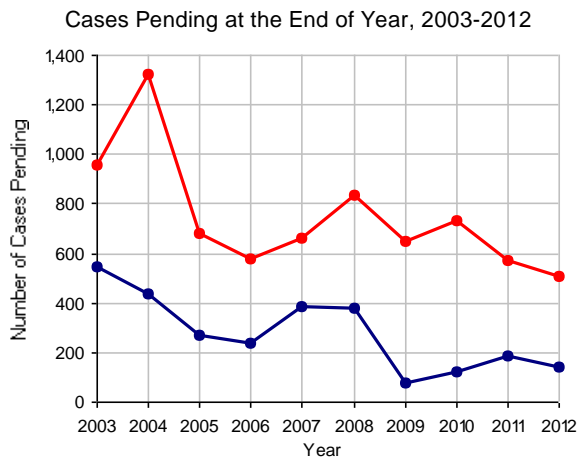


2012 Juvenile Delinquency

	No. of Cases	
Cases Pending 1/1/2012	186	
New Cases Filed in 2012	1,319	
Cases Available for Processing	1,505	
Processed By:		
Judge	1,082	79.2%
Non-Judicial Officer	284	20.8%
Other	0	
Cases Processed	1,366	100.0%
Cases Pending 12/31/2012	139	

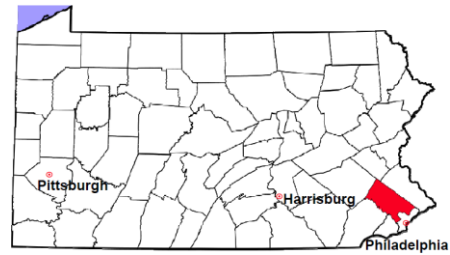


Note: Clearance Rate = Cases Processed / New Cases Filed



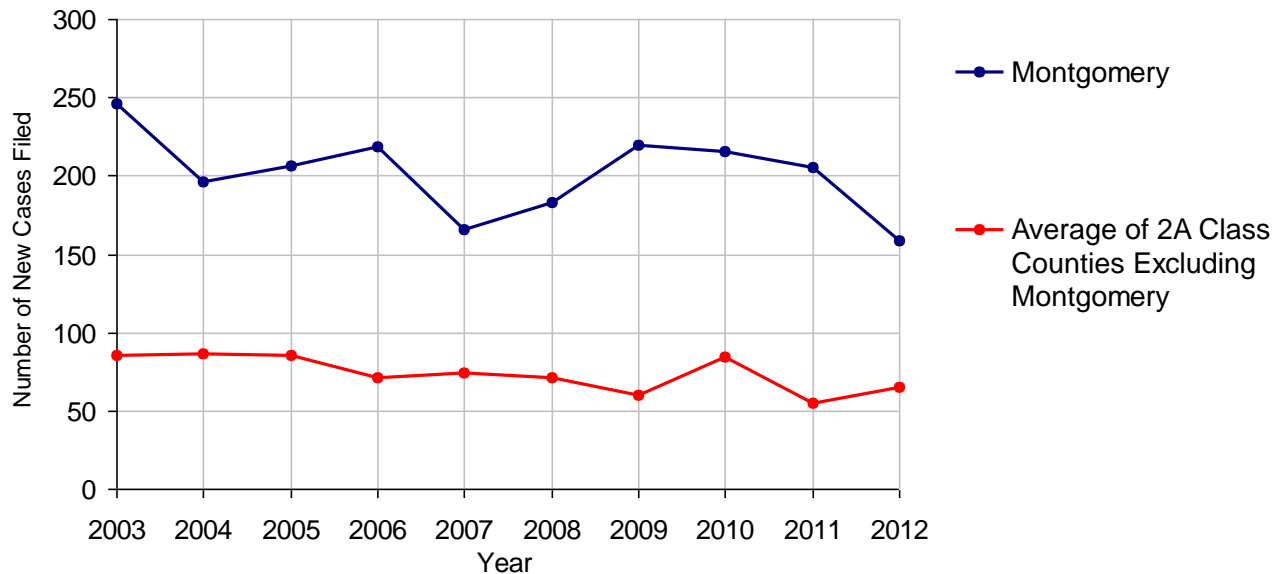
Montgomery County

2012 Population Estimate: 808,460
 Class of County: 2A
 No. of Common Pleas Court Judgeships: 23



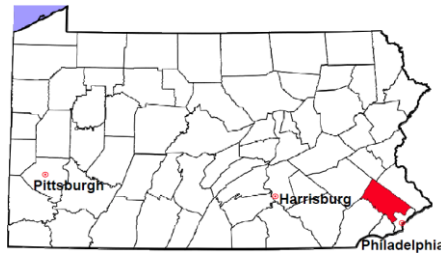
2012 Accounts	No. of Cases	
Cases Pending 1/1/2012	88	
New Cases Filed in 2012	159	
Cases Available for Processing	247	
Processed By:		
Contested before a Judge	56	29.0%
Contested before a Non-judicial Officer	0	
Uncontested	111	57.5%
Other	26	13.5%
Cases Processed	193	100.0%
Cases Pending 12/31/2012	54	

Accounts New Cases Filed, 2003-2012



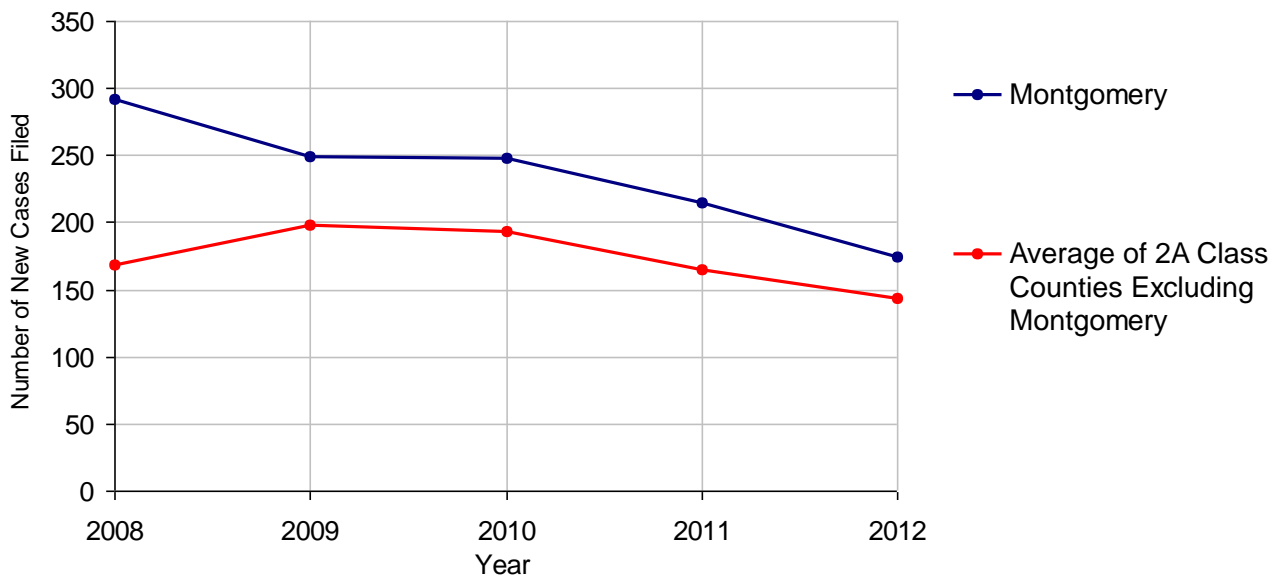
Montgomery County

2012 Population Estimate: 808,460
 Class of County: 2A
 No. of Common Pleas Court Judgeships: 23



2012 Adoptions		No. of Cases	
Cases Pending 1/1/2012		7	
New Cases Filed in 2012		175	
Cases Available for Processing		182	
Processed By:			
Contested before a Judge	Granted	0	
	Denied	0	
Uncontested	Granted	174	100.0%
	Denied	0	
Other		0	
Cases Processed		174	100.0%
Cases Pending 12/31/2012		8	

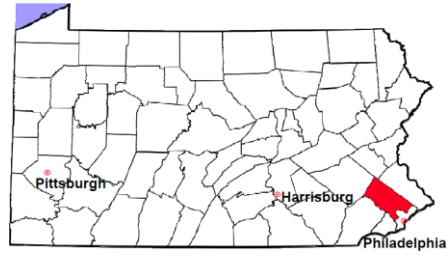
Adoptions New Cases Filed, 2008-2012



Note: Prior to 2008, each petition was counted as one new case, regardless of the number of children listed on the petition. Starting in 2008, each child listed on a petition is counted as a separate case. Therefore, statistics since 2008 should not be compared to statistics prior to 2008.

Montgomery County

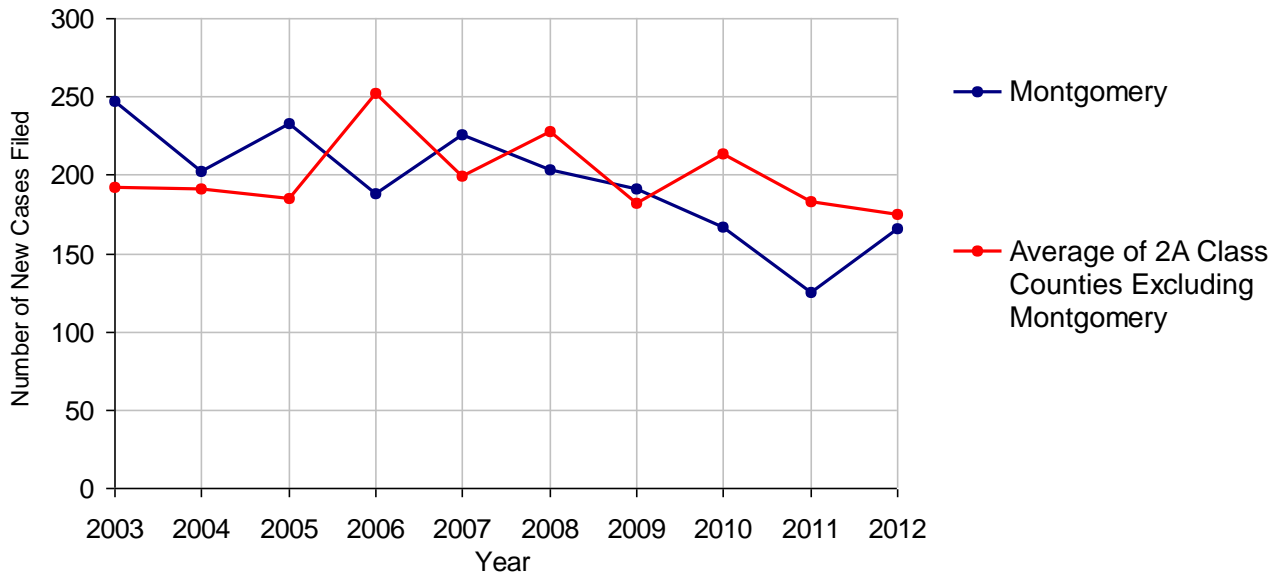
2012 Population Estimate: 808,460
 Class of County: 2A
 No. of Common Pleas Court Judgeships: 23



2012 Relinquishments/Terminations

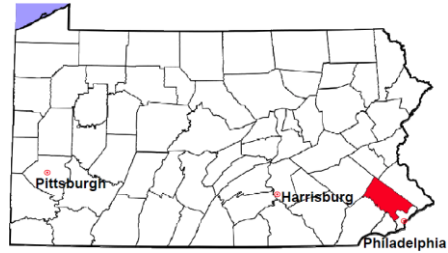
	No. of Cases	
Cases Pending 1/1/2012	1	
New Cases Filed in 2012	166	
Cases Available for Processing	167	
Processed By:		
Contested before a Judge	18	10.8%
Uncontested	149	89.2%
Other	0	
Cases Processed	167	100.0%
Cases Pending 12/31/2012	0	

Relinquishments/Terminations New Cases Filed, 2003-2012



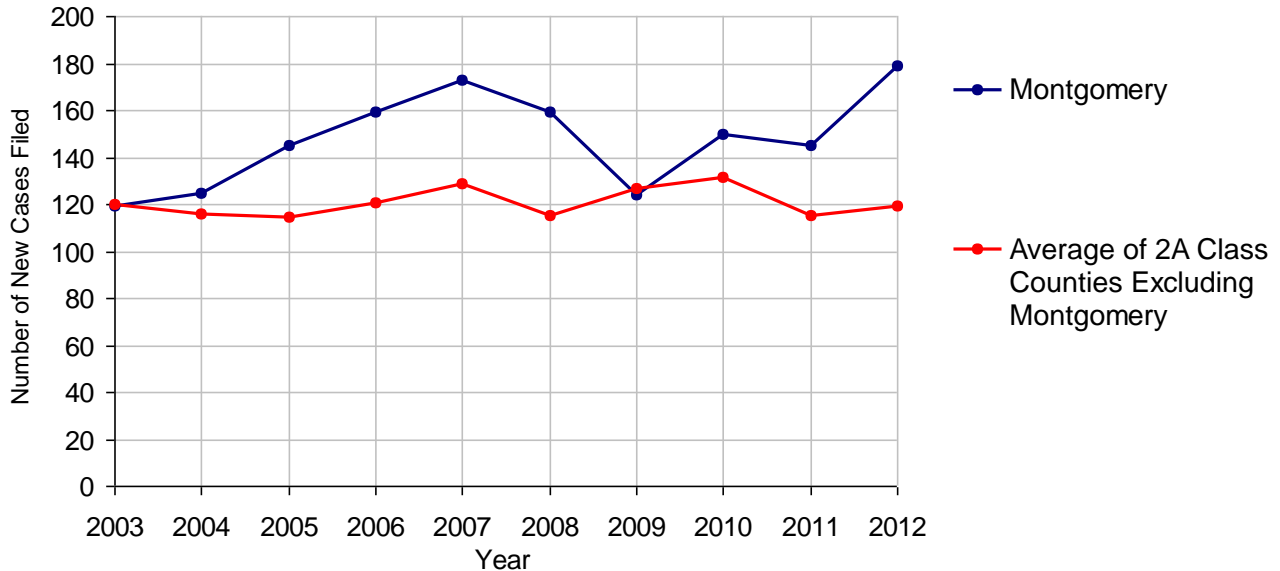
Montgomery County

2012 Population Estimate: 808,460
 Class of County: 2A
 No. of Common Pleas Court Judgeships: 23



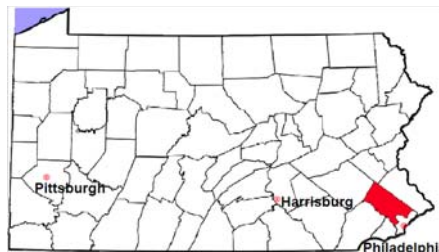
2012 Appointment of Guardians		No. of Cases	
Cases Pending 1/1/2012		1	
New Cases Filed in 2012		179	
Cases Available for Processing		180	
Processed By:			
Contested before a Judge		3	1.7%
Uncontested		159	88.8%
Other		17	9.5%
Cases Processed		179	100.0%
Cases Pending 12/31/2012		1	

Appointment of Guardians New Cases Filed, 2003-2012



Montgomery County

2012 Population Estimate: 808,460
 Class of County: 2A
 No. of Common Pleas Court Judgeships: 23



2012 Jury Yield and Utilization

Jury Yield

Qualification Questionnaires/Summonses Mailed:	80,550	A		
Returned Undeliverable:	3,604	B	4.5%	Of Qualification Questionnaires/Summonses Mailed
Not Responded to:	8,883	C	11.0%	
the Number of Prospective Jurors:				
Disqualified:	5,854	D	7.3%	
Exempted:	11,013	E	13.7%	
Excused:	3,267	F	4.1%	
Deferred to New Term:	5,967	G	7.4%	
Deferred from Previous Term:	860	H	1.1%	
Total Number of Qualified Jurors Available for Service:	42,822	I	53.2%	

I=A-B-C-D-E-F-G+H

Jury Utilization

the Number of Jurors:				
Reporting for Service:	12,185		28.5%	Of Jurors Qualified and Available
Told Not to Report for Service:	35,875		83.8%	
Sent to Courtroom for Jury Selection (Voir Dire):	7,751		63.6%	Of Jurors Reporting for Service
Impanelled or Sworn (jurors/alternates):	1,597		13.1%	
Removed for Cause/Hardship:	1,346			
Removed by Peremptory Challenge:	1,223			

Jury Costs

Total Annual Budget for Juror Operations:	\$662,501.00	J
Average Cost Per Juror:	\$8.22	K

K=J/A

In mid-2011, AOPC began utilizing the National Center for State Courts' Jury Managers' Toolbox for collecting jury data. In 2012, the counties began providing additional jury data which included information about the summoning practices in the counties. With this additional data, we can now see not only how many citizens come to our courthouses every day in anticipation of serving on a jury, but the number of citizens actually summoned and the number of those summonsed who are exempt, excused or disqualified from service. With this wider view of the jury process, we can determine the efficiency with which our courts operate, and with the assistance of the Jury Managers' Toolbox find guidance in streamlining the jury summoning practices.