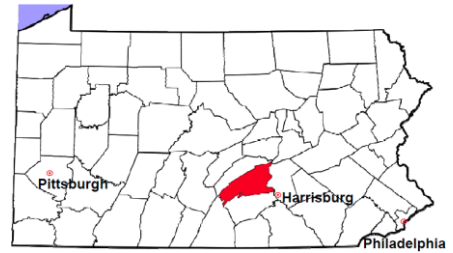


Perry County

2012 Population Estimate: 45,701
 Class of County: 6th
 No. of Common Pleas Court Judgeships: 2
 (Perry and Juniata combined)



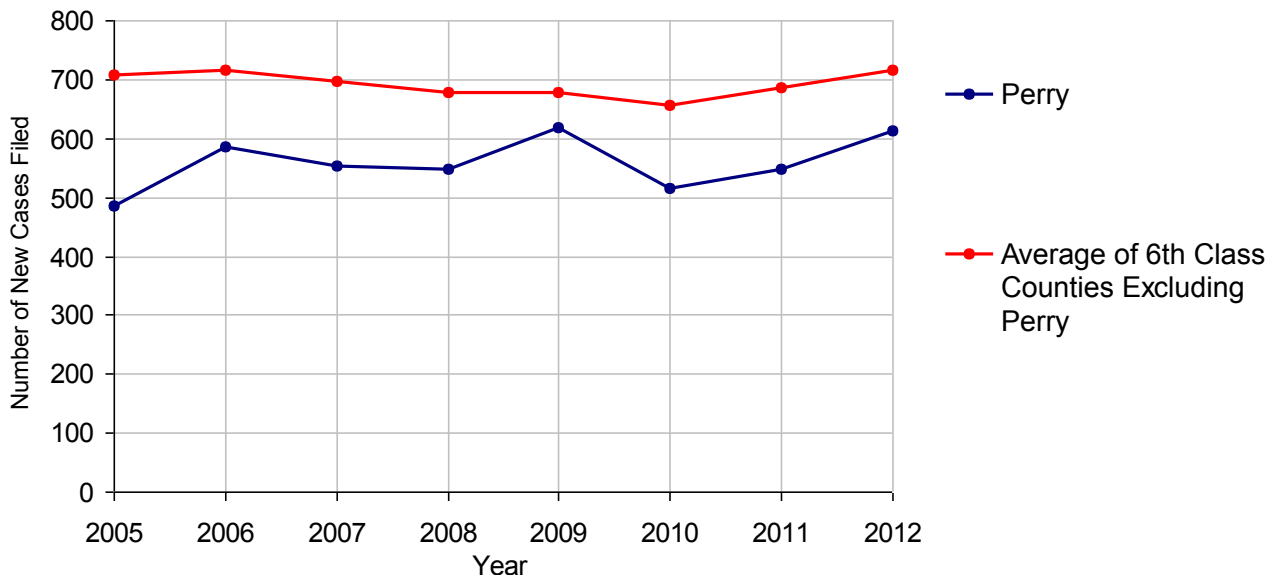
2012 Criminal	No. of Cases	
Cases Pending 1/1/2012	205	
New Cases Filed in 2012	614	
Reopened Cases	12	
Cases Available for Disposition	831	
Disposed by:		
Withdrawn/Dismissed	24	4.3%
ARD	80	14.2%
Guilty Plea	430	76.5%
Non-Jury Trial	2	0.4%
Jury Trial	7	1.2%
Inactive	8	1.4%
Other	11	2.0%
Total Cases Disposed	562	100.0%
Cases Pending 12/31/2012	269	
Cases Awaiting Sentencing	7	



Age of Pending Cases as of 12/31/2012		
0-60 Days	133	49.4%
61-120 Days	84	31.2%
121-180 Days	25	9.3%
181-240 Days	7	2.6%
241-300 Days	4	1.5%
301-360 Days	3	1.1%
Over 360 Days	13	4.8%
Total	269	100.0%

Data provided by CPCMS

Criminal New Cases Filed, 2005-2012

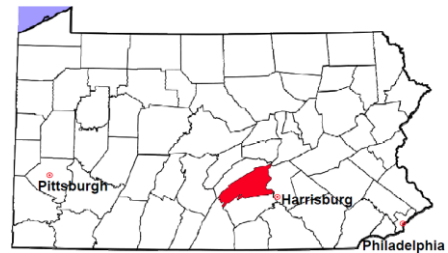


Perry County

2012 Population Estimate: 45,701

Class of County: 6th

No. of Common Pleas Court Judgeships: 2
(Perry and Juniata combined)



2012 Criminal - New Cases by Case Type

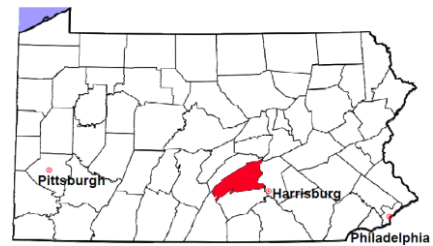


Case Type	Felony	Misdemeanor	Summary /Ungraded	Total
Person	45	74	0	119
Property	92	71	5	168
Drug	18	72	0	90
Weapon	8	3	0	11
Public Order	6	39	1	46
Motor Vehicle - DWI/DUI	0	174	0	174
Motor Vehicle - Other	0	4	0	4
Other	2	0	0	2
Total	171	437	6	614
	27.9%	71.2%	1.0%	100.0%

Data provided by CPCMS

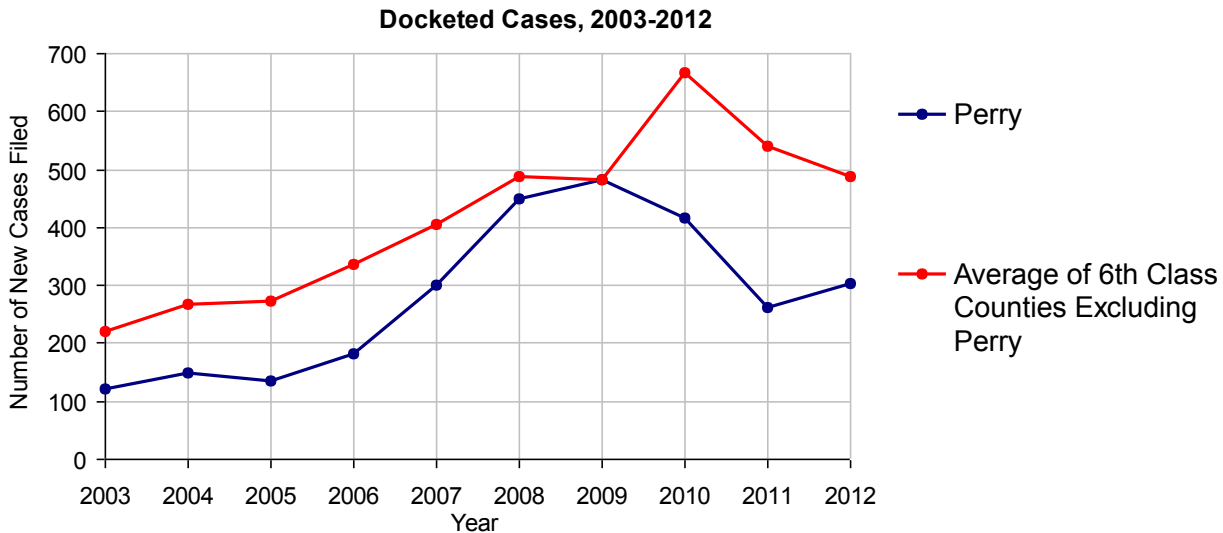
Perry County

2012 Population Estimate: 45,701
 Class of County: 6th
 No. of Common Pleas Court Judgeships: 2
 (Perry and Juniata combined)



2012 Civil	Civil Action	Other	Total
Cases Pending 1/1/2012	337	19	356
Docketed Cases	175	129	304
Arbitration Appeals	0	0	0
Transferred In	0	0	0
Returned to Active	0	0	0
Cases Available for Processing	512	148	660
Disposed By:			
Default Judgments	91	90	181
Cases Decided by Arbitration Board	3	1	4
Dispositive Motions	0	0	0
Settlements	32	21	53
Moved to Inactive Status	25	1	26
Transferred/Withdrawn	6	0	6
Administrative Purge	30	0	30
Other	19	3	22
Jury Trial	0	0	0
Non-Jury Trial	0	0	0
Total Cases Disposed	206	116	322
Cases Pending 12/31/2012	306	32	338

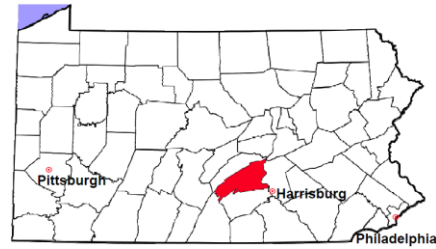
Age of Pending Cases as of 12/31/2012 (Civil Action Only)		
0-6 months	62	20.3%
7-12 months	42	13.7%
13-18 months	36	11.8%
19-24 months	26	8.5%
25-30 months	46	15.0%
31-36 months	23	7.5%
37-42 months	14	4.6%
43-48 months	14	4.6%
49-54 months	5	1.6%
55-60 months	2	0.7%
61-66 months	7	2.3%
67-72 months	5	1.6%
Over 72 months	24	7.8%
Total	306	100.0%



Note: Prior to June 2010, docketed cases under the "Other" category were not reported. The inclusion of these cases starting from June 2010 may contribute to an increase in docketed cases from 2009 to 2010.

Perry County

2012 Population Estimate: 45,701
 Class of County: 6th
 No. of Common Pleas Court Judgeships: 2
 (Perry and Juniata combined)



2012 Civil - Docketed Cases Listed by Case Type

TORT	36	11.8%
<i>(does not include mass tort)</i>		
Intentional	4	
Malicious Prosecution	0	
Motor Vehicle	22	
Nuisance	0	
Premise Liability	2	
Product Liability	2	
Slander/Libel/Defamation	1	
Other	5	
MASS TORT	0	
Asbestos	0	
Tobacco	0	
Toxic Tort - DES	0	
Toxic Tort - Implant	0	
Toxic Waste	0	
Other	0	
PROFESSIONAL LIABILITY	0	
Dental	0	
Legal	0	
Medical Malpractice	0	
Other	0	
CONTRACT	139	45.7%
<i>(does not include judgments)</i>		
Buyer Plaintiff	4	
Debt Collection: Credit Card	85	
Debt Collection: Other	42	
Employment Dispute:		
Employment Dispute: Discriminatio	0	
Employment Dispute: Other	0	
Other	8	

REAL PROPERTY	100	32.9%
Ejectment*	13	
Eminent Domain/Condemnation	0	
Ground Rent	0	
Landlord/Tenant Dispute	0	
Mortgage Foreclosure:		
Residential*	78	
Commercial*	1	
Partition of Real Property*	1	
Quiet Title*	1	
Other*	6	
CIVIL APPEALS	8	2.6%
<i>- Administrative Agencies</i>		
Board of Assessment*	1	
Board of Elections*	1	
Dept. of Transportation*	4	
Zoning Board*	2	
Statutory Appeal - Other*	0	
Other*	0	
MISCELLANEOUS	21	6.9%
Common Law/		
Statutory Arbitration*	1	
Declaratory Judgment*	6	
Mandamus*	0	
Non-Domestic Relations		
Restraining Order*	0	
Quo Warranto*	0	
Replevin*	4	
Other*	10	
TOTAL DOCKETED CASES:	304	100%

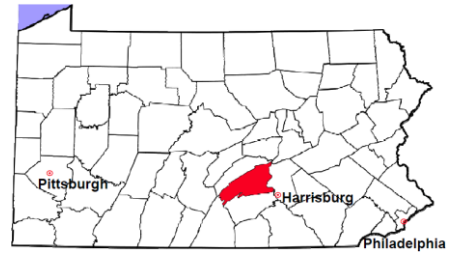
Of the Docketed Cases:

Pro Se Filings: 1 0.3% Class Action Suits: 0 MDJ Appeals: 11 3.6%

* Civil Other

Perry County

2012 Population Estimate: 45,701
 Class of County: 6th
 No. of Common Pleas Court Judgeships: 2
 (Perry and Juniata combined)



2012 Protection From Abuse

**No. of
Petitions**

Cases Pending 1/1/2012	37
New Cases Filed in 2012	80

Of these, Petitions Requesting Temporary Orders: 80 (100.0%)

Temporary Orders DENIED: 19 (23.8%), Temporary Orders GRANTED: 61 (76.3%)

Cases Available for Processing 117

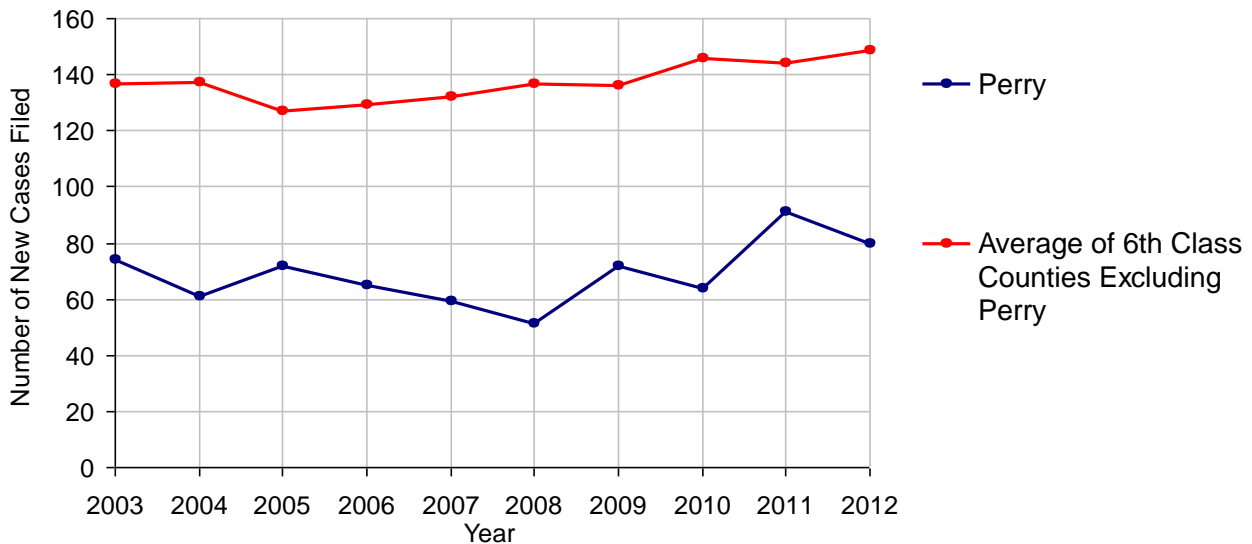
Processed By:

Temporary Order DENIED After Ex Parte Hearing and No Evidentiary Hearing Scheduled	15	17.6%
Temporary Order DISMISSED After Evidentiary Hearing and No Final Order Entered	11	12.9%
Final Order DENIED After Evidentiary Hearing Before a Judge	1	1.2%
Final Order GRANTED After Evidentiary Hearing Before a Judge	15	17.6%
Plaintiff Did Not Appear For Evidentiary Hearing	8	9.4%
Final Order by STIPULATION OR AGREEMENT Between the Parties	13	15.3%
Petition WITHDRAWN by Plaintiff	12	14.1%
TRANSFERRED to Another Jurisdiction	1	1.2%
DECEASED Party	1	1.2%
Other	8	9.4%

Cases Processed 85 100.0%

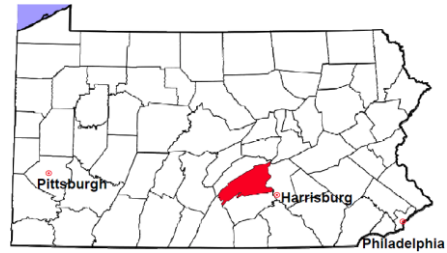
Cases Pending 12/31/2012 32

PFA New Cases Filed, 2003-2012



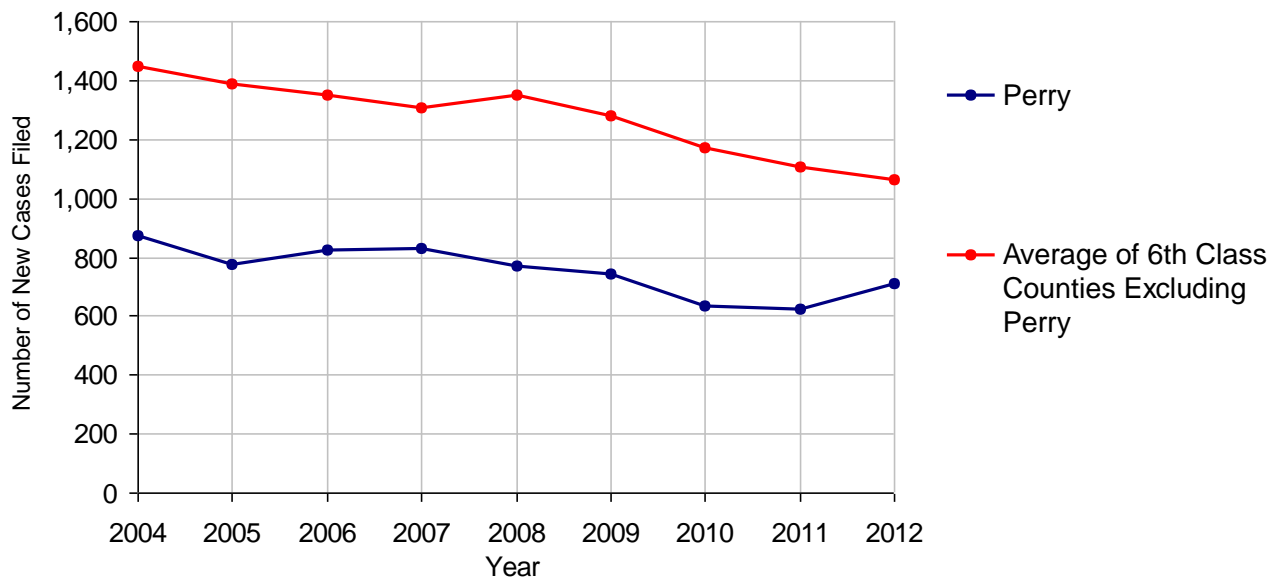
Perry County

2012 Population Estimate: 45,701
 Class of County: 6th
 No. of Common Pleas Court Judgeships: 2
 (Perry and Juniata combined)



2012 Spousal & Child Support	No. of Petitions	
Cases Pending 1/1/2012	211	
New Cases Filed in 2012	711	
Dockets Transferred In (+)	9	
Dockets Transferred Out (-)	25	
Cases Available for Processing	906	
Processed By:		
Judge	43	6.0%
Intake Officer	675	94.0%
Hearing Officer	0	
Other	0	
Cases Processed	718	100.0%
Cases Pending 12/31/2012	188	

Spousal & Child Support New Cases Filed, 2004-2012

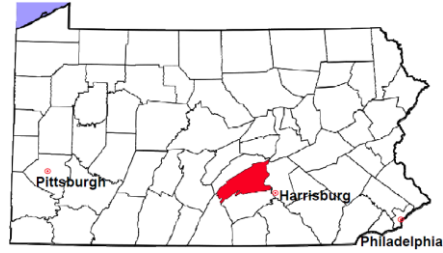


Perry County

2012 Population Estimate: 45,701

Class of County: 6th

No. of Common Pleas Court Judgeships: 2
(Perry and Juniata combined)



2012 Custody/Partial Custody/Visitation

No. of
Petitions

Cases Pending 1/1/2012

447

New Cases Filed in 2012

229

Cases Available for Processing

676

Processed By:

Judge

172

94.0%

Non-Judicial Officer

0

Other

11

6.0%

Cases Processed

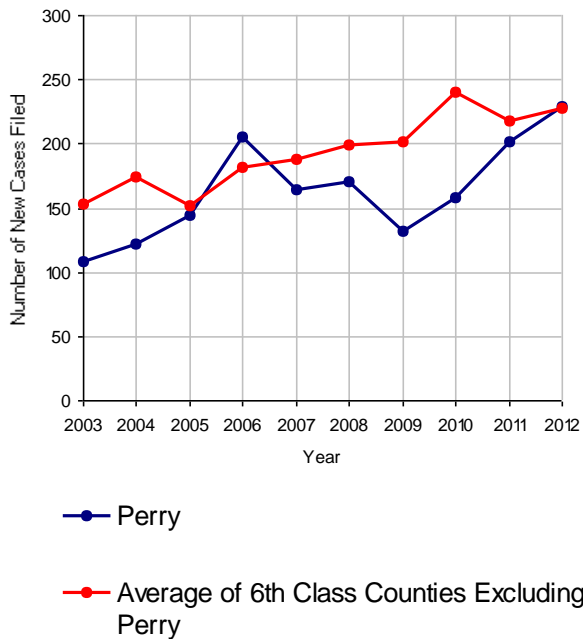
183

100.0%

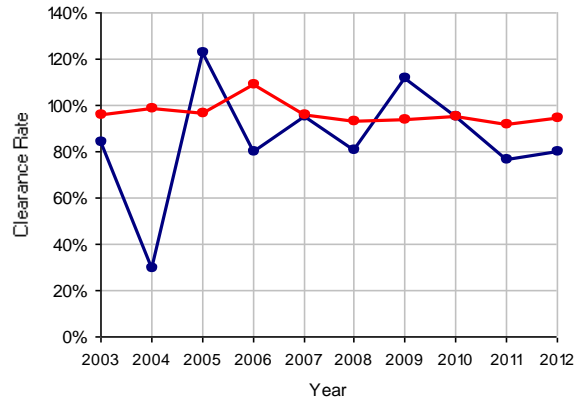
Cases Pending 12/31/2012

493

Custody/Partial Custody/Visitation New Cases Filed, 2003-2012

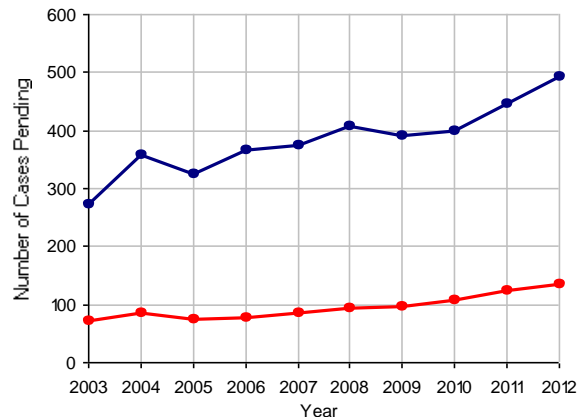


Clearance Rate, 2003-2012



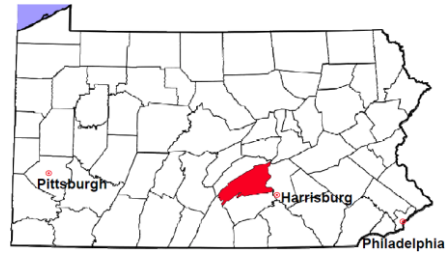
Note: Clearance Rate = Cases Processed / New Cases Filed

Cases Pending at the End of Year, 2003-2012



Perry County

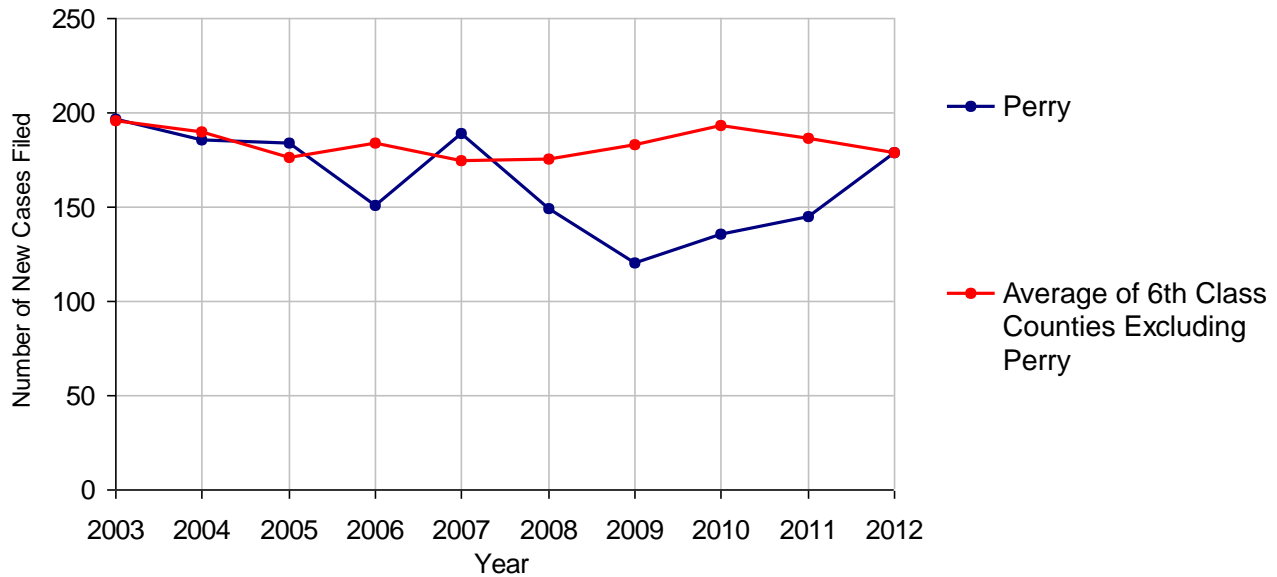
2012 Population Estimate: 45,701
 Class of County: 6th
 No. of Common Pleas Court Judgeships: 2
 (Perry and Juniata combined)



2012 Divorce

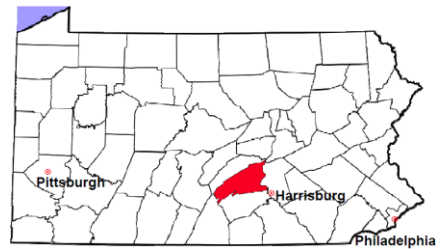
	No. of Petitions	
Cases Pending 1/1/2012	261	
New Cases Filed in 2012	179	
Cases Available for Processing	440	
Processed By:		
Contested Before a Judge	2	1.2%
Contested Before a Master	8	4.8%
Uncontested	152	90.5%
Other	6	3.6%
Cases Processed	168	100.0%
Cases Pending 12/31/2012	272	

Divorce New Cases Filed, 2003-2012



Perry County

2012 Population Estimate: 45,701
 Class of County: 6th
 No. of Common Pleas Court Judgeships: 2
 (Perry and Juniata combined)



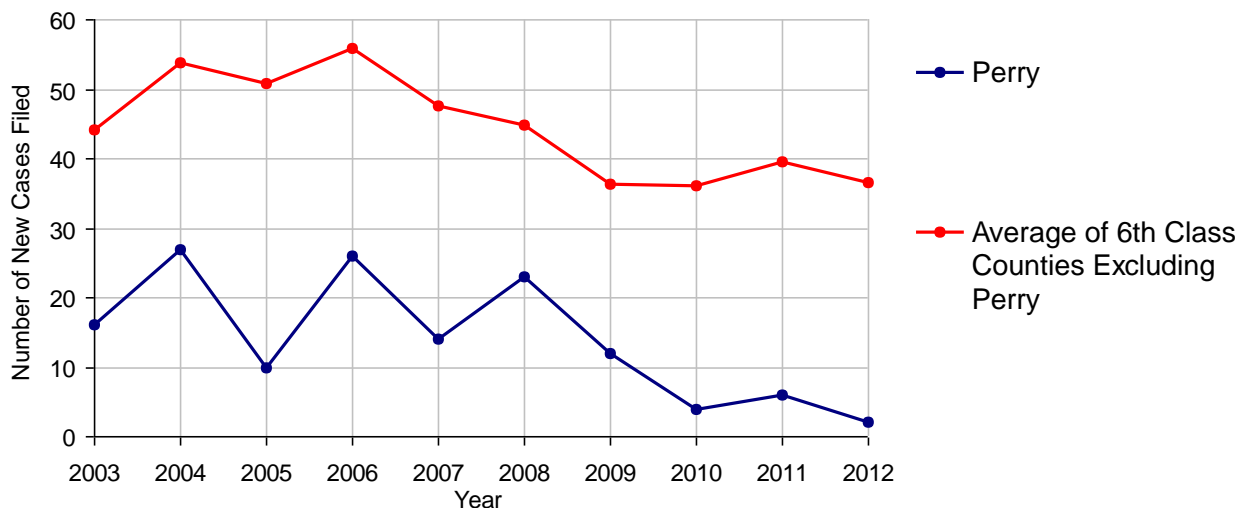
2012 Juvenile Dependency - Active Dependent Inventory



	Abuse/ Neglect	Status Offenses	Total
Cases Pending 1/1/2012	0	0	0
New Petitions Filed in 2012	1	1	2
Other	0	0	0
Total Petitions Available for Processing	1	1	2
Processed by:			
Adjudicated Dependent			
Judge	0	0	0
Master	0	0	0
Adjudicated NOT Dependent			
Judge	0	0	0
Master	0	0	0
Withdrawn/Dismissed/Inactive	0	0	0
Other	1	0	1
Total Petitions Processed	1	0	1
Cases Pending 12/31/2012	0	1	1

Data provided by CPCMS

Abuse/Neglect and Status Offenses New Cases Filed, 2003-2012



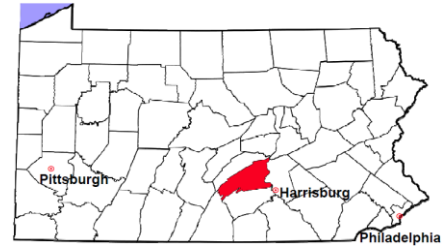
Note: Dependency data for 2002-2010 were collected manually. Dependency data for 2011 and 2012 were provided by CPCMS.

Perry County

2012 Population Estimate: 45,701

Class of County: 6th

No. of Common Pleas Court Judgeships: 2
(Perry and Juniata combined)



2012 Juvenile Dependency - Adjudicated Dependent Inventory



	Abuse/ Neglect	Status Offenses	Total
Cases Pending 1/1/2012	14	0	14
New Adjudicated Dependent Cases	0	0	0
Other	0	0	0
Total Adjudicated Dependent Cases	14	0	14
<u>Court Supervision Terminated:</u>			
Family Reunification	1 7.7%	0	1 7.7%
Adoption	5 38.5%	0	5 38.5%
Placement with a Relative/Guardian	1 7.7%	0	1 7.7%
Aged Out	2 15.4%	0	2 15.4%
Other Permanency Outcomes*	1 7.7%	0	1 7.7%
Other**	3 23.1%	0	3 23.1%
Total Adjudicated Dependent Cases Terminated	13 100.0%	0 100.0%	13 100.0%
Cases Pending 12/31/2012	1	0	1

Data provided by CPCMS

* Other Permanency Outcomes include: adjudicated delinquent, death due to natural causes, death due to negligence, emancipation, permanent living arrangement, and parent has come forward.

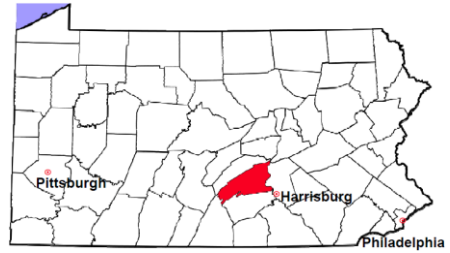
** Other includes cases where court supervision is terminated due to transfer out of jurisdiction, withdrawal and administrative closure.

Perry County

2012 Population Estimate: 45,701

Class of County: 6th

No. of Common Pleas Court Judgeships: 2
(Perry and Juniata combined)

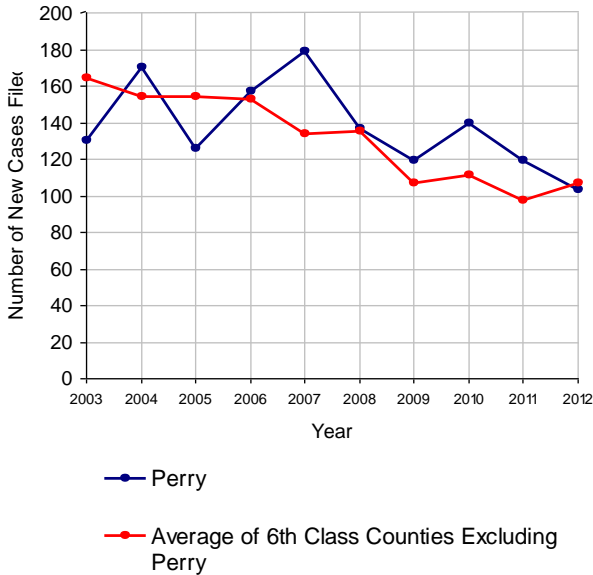


2012 Juvenile Delinquency

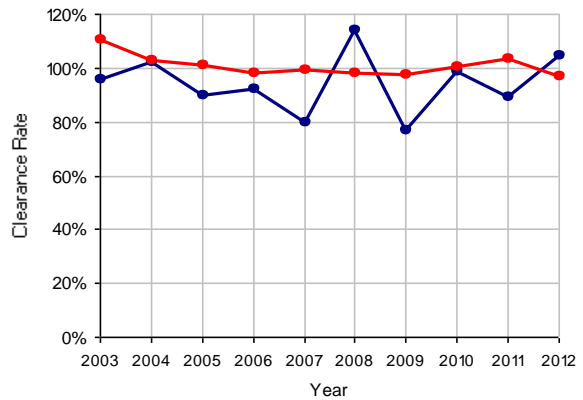
No. of Cases

Cases Pending 1/1/2012	81
New Cases Filed in 2012	103
Cases Available for Processing	184
Processed By:	
Judge	57 52.8%
Non-Judicial Officer	31 28.7%
Other	20 18.5%
Cases Processed	108 100.0%
Cases Pending 12/31/2012	76

Juvenile Delinquency New Cases Filed, 2003-2012

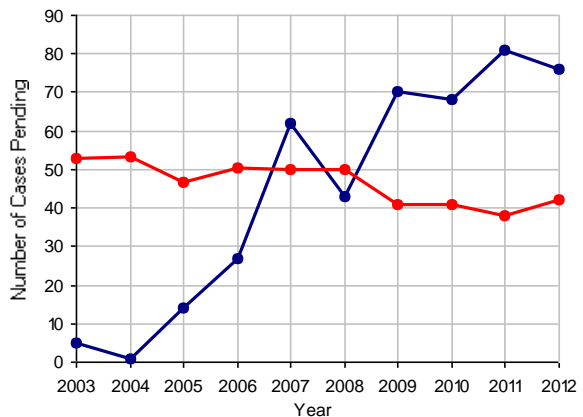


Clearance Rate, 2003-2012



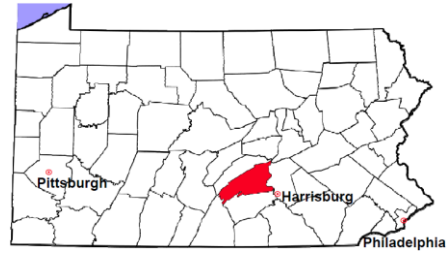
Note: Clearance Rate = Cases Processed / New Cases Filed

Cases Pending at the End of Year, 2003-2012



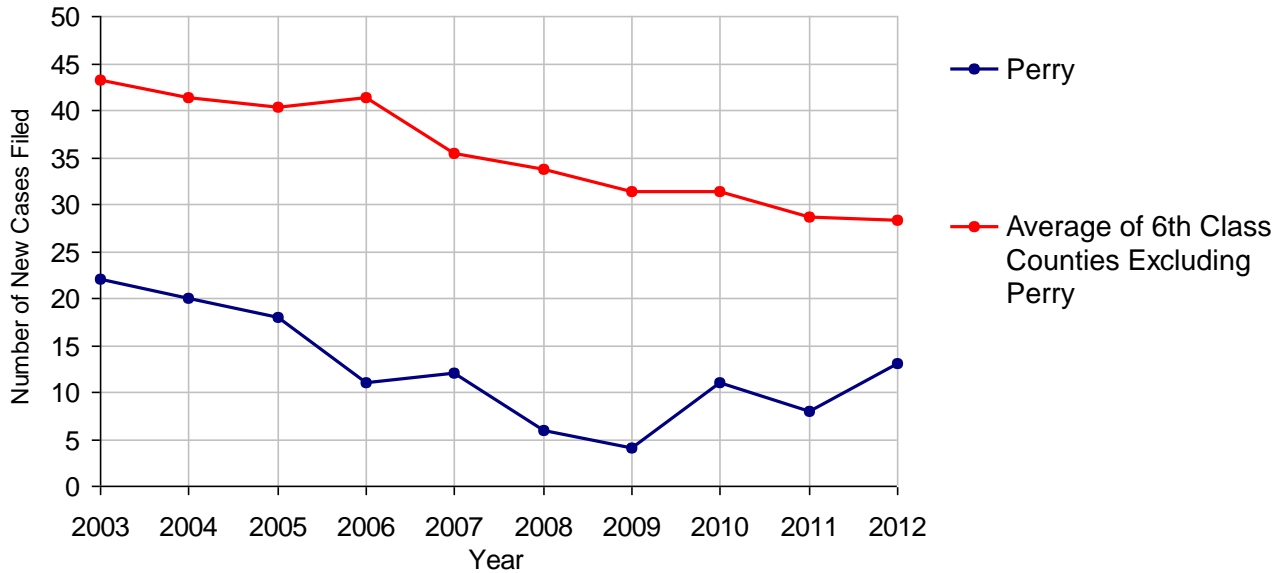
Perry County

2012 Population Estimate: 45,701
 Class of County: 6th
 No. of Common Pleas Court Judgeships: 2
 (Perry and Juniata combined)



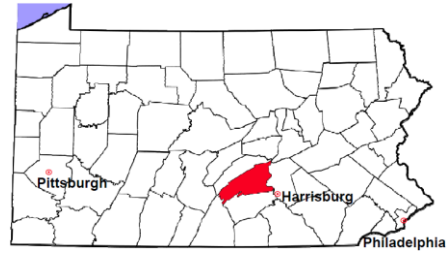
2012 Accounts	No. of Cases	
Cases Pending 1/1/2012	1	
New Cases Filed in 2012	13	
Cases Available for Processing	14	
Processed By:		
Contested before a Judge	0	
Contested before a Non-judicial Officer	0	
Uncontested	12	100.0%
Other	0	
Cases Processed	12	100.0%
Cases Pending 12/31/2012	2	

Accounts New Cases Filed, 2003-2012



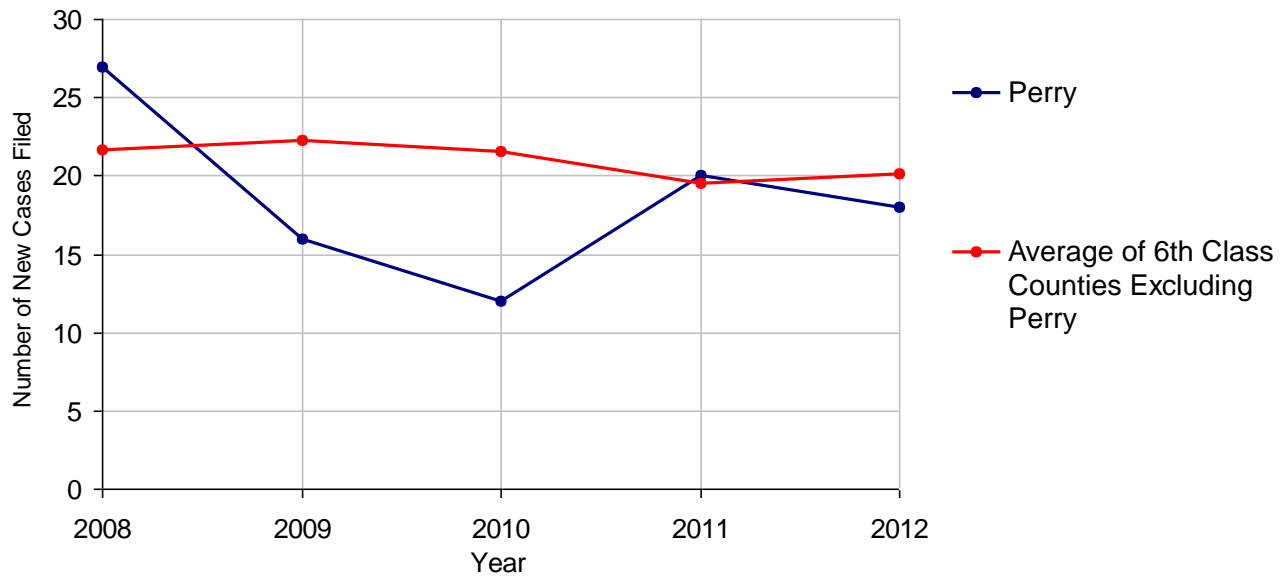
Perry County

2012 Population Estimate: 45,701
 Class of County: 6th
 No. of Common Pleas Court Judgeships: 2
 (Perry and Juniata combined)



2012 Adoptions		No. of Cases	
Cases Pending 1/1/2012		0	
New Cases Filed in 2012		18	
Cases Available for Processing		18	
Processed By:			
Contested before a Judge	Granted	0	
	Denied	0	
Uncontested	Granted	16	100.0%
	Denied	0	
Other		0	
Cases Processed		16	100.0%
Cases Pending 12/31/2012		2	

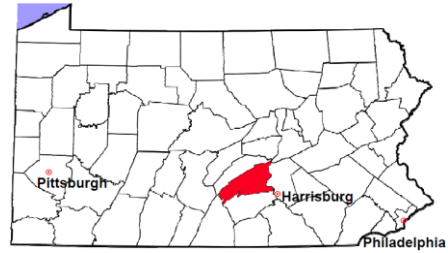
Adoptions New Cases Filed, 2008-2012



Note: Prior to 2008, each petition was counted as one new case, regardless of the number of children listed on the petition. Starting in 2008, each child listed on a petition is counted as a separate case. Therefore, statistics since 2008 should not be compared to statistics prior to 2008.

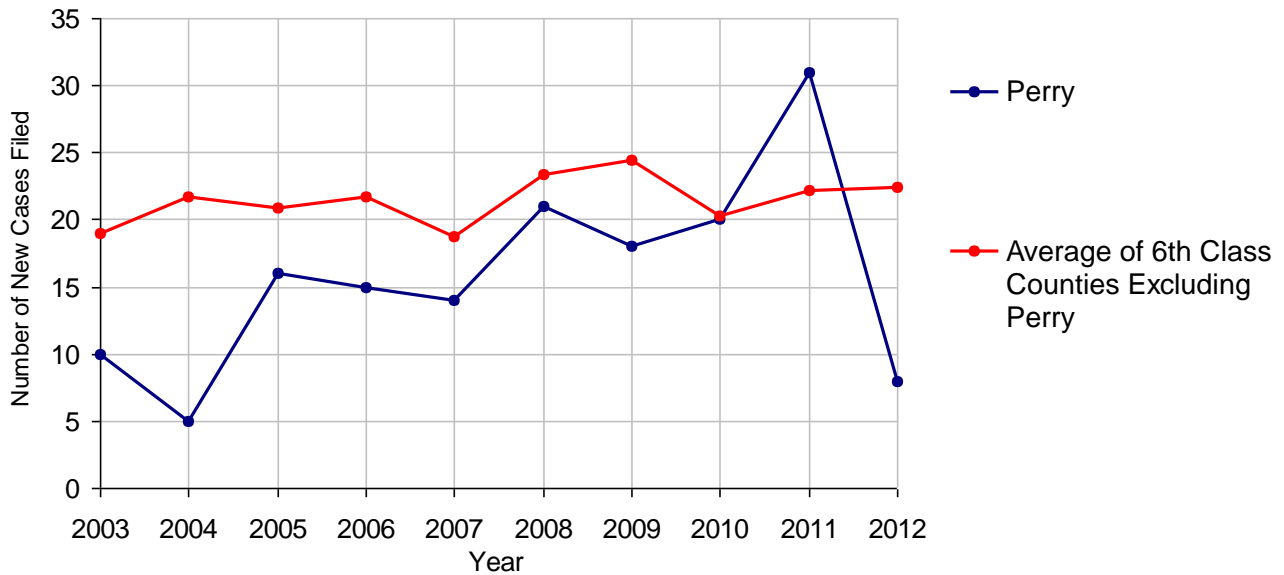
Perry County

2012 Population Estimate: 45,701
 Class of County: 6th
 No. of Common Pleas Court Judgeships: 2
 (Perry and Juniata combined)



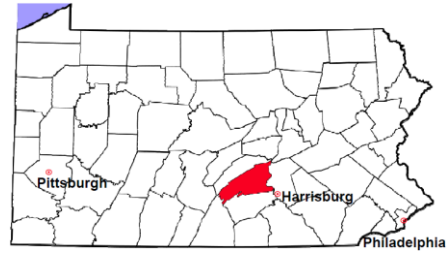
2012 Relinquishments/Terminations	No. of Cases
Cases Pending 1/1/2012	9
New Cases Filed in 2012	8
Cases Available for Processing	17
Processed By:	
Contested before a Judge	2 16.7%
Uncontested	8 66.7%
Other	2 16.7%
Cases Processed	12 100.0%
Cases Pending 12/31/2012	5

Relinquishments/Terminations New Cases Filed, 2003-2012



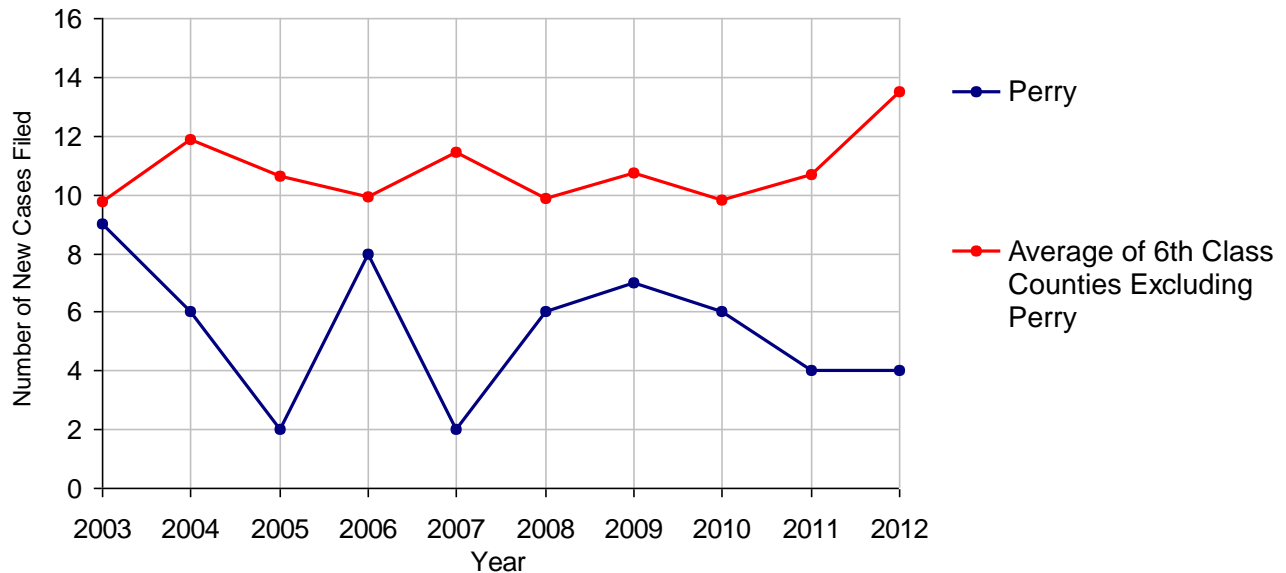
Perry County

2012 Population Estimate: 45,701
 Class of County: 6th
 No. of Common Pleas Court Judgeships: 2
 (Perry and Juniata combined)



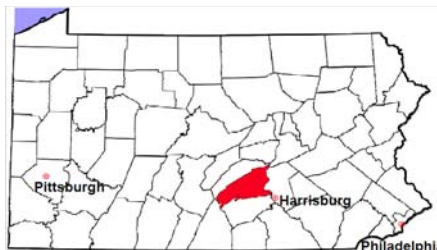
2012 Appointment of Guardians		No. of Cases	
Cases Pending 1/1/2012		1	
New Cases Filed in 2012		4	
Cases Available for Processing		5	
Processed By:			
Contested before a Judge		0	
Uncontested		1	33.3%
Other		2	66.7%
Cases Processed		3	100.0%
Cases Pending 12/31/2012		2	

Appointment of Guardians New Cases Filed, 2003-2012



Perry County

2012 Population Estimate: 45,701
 Class of County: 6th
 No. of Common Pleas Court Judgeships: 2
 (Perry and Juniata combined)



2012 Jury Yield and Utilization

Jury Yield

Qualification Questionnaires/Summonses Mailed:	1,929	A		
Returned Undeliverable:	36	B	1.9%	Of Qualification Questionnaires/Summonses Mailed
Not Responded to:	30	C	1.6%	
the Number of Prospective Jurors:				
Disqualified:	208	D	10.8%	
Exempted:	58	E	3.0%	
Excused:	84	F	4.4%	
Deferred to New Term:	270	G	14.0%	
Deferred from Previous Term:	147	H	7.6%	
Total Number of Qualified Jurors Available for Service:	1,390	I	72.1%	

I=A-B-C-D-E-F-G+H

Jury Utilization

the Number of Jurors:				
Reporting for Service:	1,200		86.3%	Of Jurors Qualified and Available
Told Not to Report for Service:	126		9.1%	
Sent to Courtroom for Jury Selection (Voir Dire):	600		50.0%	Of Jurors Reporting for Service
Impanelled or Sworn (jurors/alternates):	299		24.9%	
Removed for Cause/Hardship:	68			
Removed by Peremptory Challenge:	229			

Jury Costs

Total Annual Budget for Juror Operations:	\$48,023.00	J
Average Cost Per Juror:	\$24.90	K

K=J/A

In mid-2011, AOPC began utilizing the National Center for State Courts' Jury Managers' Toolbox for collecting jury data. In 2012, the counties began providing additional jury data which included information about the summoning practices in the counties. With this additional data, we can now see not only how many citizens come to our courthouses every day in anticipation of serving on a jury, but the number of citizens actually summonsed and the number of those summonsed who are exempt, excused or disqualified from service. With this wider view of the jury process, we can determine the efficiency with which our courts operate, and with the assistance of the Jury Managers' Toolbox find guidance in streamlining the jury summonsing practices.