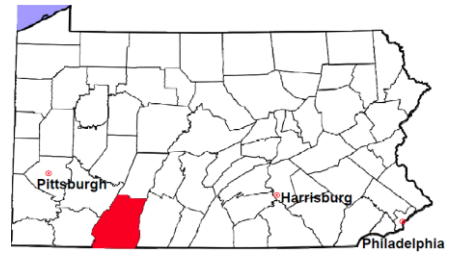


# Somerset County

2012 Population Estimate: 76,957  
 Class of County: 6th  
 No. of Common Pleas Court Judgeships: 3



## 2012 Criminal No. of Cases

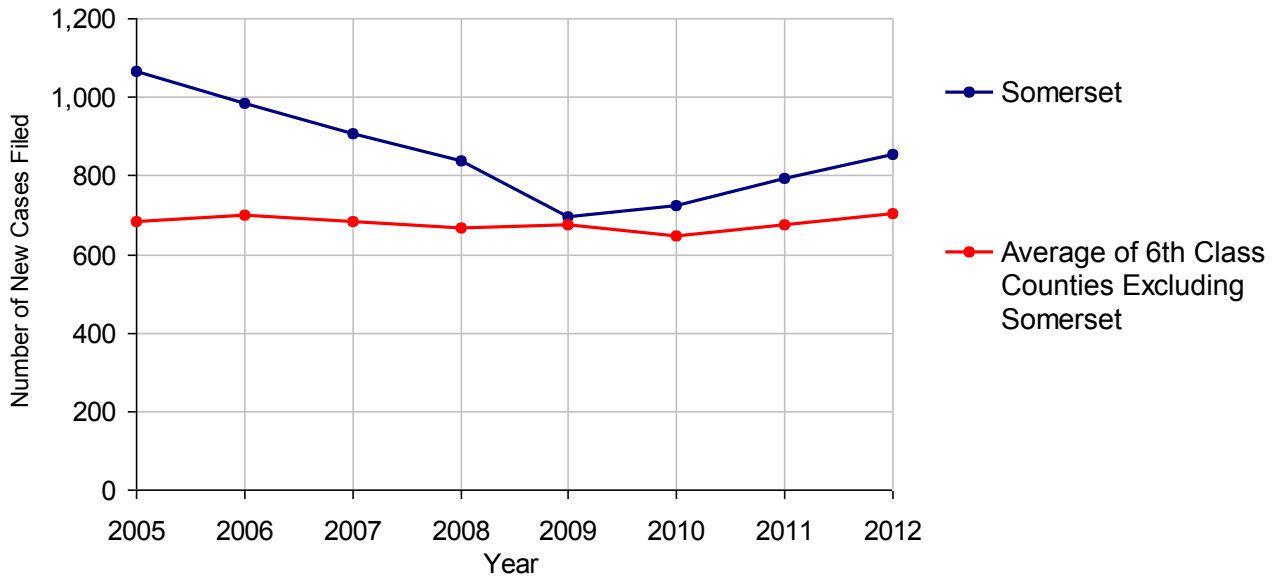
Cases Pending 1/1/2012	547
New Cases Filed in 2012	854
Reopened Cases	113
<b>Cases Available for Disposition</b>	<b>1,514</b>
<b>Disposed by:</b>	
Withdrawn/Dismissed	223 21.0%
ARD	173 16.3%
Guilty Plea	602 56.6%
Non-Jury Trial	3 0.3%
Jury Trial	7 0.7%
Inactive	33 3.1%
Other	23 2.2%
<b>Total Cases Disposed</b>	<b>1,064 100.0%</b>
<b>Cases Pending 12/31/2012</b>	<b>450</b>
Cases Awaiting Sentencing	126



0-60 Days	129	28.7%
61-120 Days	80	17.8%
121-180 Days	83	18.4%
181-240 Days	43	9.6%
241-300 Days	44	9.8%
301-360 Days	17	3.8%
Over 360 Days	54	12.0%
<b>Total</b>	<b>450</b>	<b>100.0%</b>

Data provided by CPCMS

**Criminal New Cases Filed, 2005-2012**

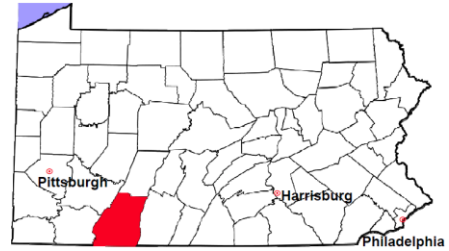


# Somerset County

2012 Population Estimate: 76,957

Class of County: 6th

No. of Common Pleas Court Judgeships: 3



## 2012 Criminal - New Cases by Case Type



Case Type	Felony	Misdemeanor	Summary /Ungraded	Total
Person	81	76	1	158
Property	156	116	0	272
Drug	38	64	0	102
Weapon	5	0	0	5
Public Order	15	60	0	75
Motor Vehicle - DWI/DUI	0	235	0	235
Motor Vehicle - Other	1	6	0	7
Other	0	0	0	0
<b>Total</b>	<b>296</b>	<b>557</b>	<b>1</b>	<b>854</b>
	<b>34.7%</b>	<b>65.2%</b>	<b>0.1%</b>	<b>100.0%</b>

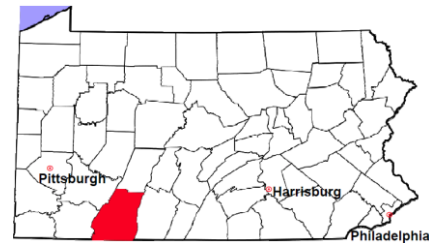
Data provided by CPCMS

# Somerset County

2012 Population Estimate: 76,957

Class of County: 6th

No. of Common Pleas Court Judgeships: 3

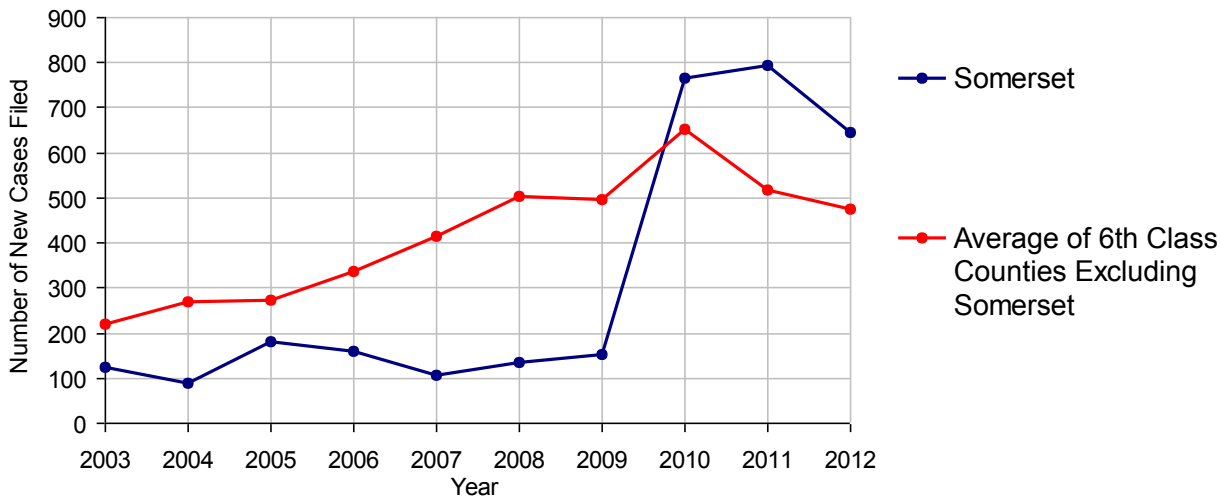


2012 Civil	Civil Action	Other	Total
Cases Pending 1/1/2012	632	783	1,415
Docketed Cases	418	228	646
Arbitration Appeals	2	1	3
Transferred In	0	0	0
Returned to Active	3	4	7
<b>Cases Available for Processing</b>	<b>1,055</b>	<b>1,016</b>	<b>2,071</b>
Disposed By:			
Default Judgments	120	75	195
Cases Decided by Arbitration Board	15	5	20
Dispositive Motions	28	17	45
Settlements	184	49	233
Moved to Inactive Status	0	0	0
Transferred/Withdrawn	17	12	29
Administrative Purge	21	54	75
Other	26	27	53
Jury Trial	2	1	3
Non-Jury Trial	1	1	2
<b>Total Cases Disposed</b>	<b>414</b>	<b>241</b>	<b>655</b>
<b>Cases Pending 12/31/2012</b>	<b>641</b>	<b>775</b>	<b>1,416</b>

## Age of Pending Cases as of 12/31/2012 (Civil Action Only)

0-6 months	151	23.6%
7-12 months	117	18.3%
13-18 months	95	14.8%
19-24 months	68	10.6%
25-30 months	73	11.4%
31-36 months	15	2.3%
37-42 months	19	3.0%
43-48 months	20	3.1%
49-54 months	9	1.4%
55-60 months	7	1.1%
61-66 months	8	1.2%
67-72 months	4	0.6%
Over 72 months	55	8.6%
<b>Total</b>	<b>641</b>	<b>100.0%</b>

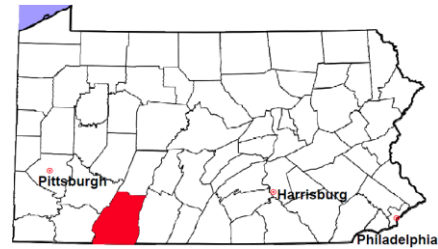
Docketed Cases, 2003-2012



Note: Prior to June 2010, docketed cases under the "Other" category were not reported. The inclusion of these cases starting from June 2010 may contribute to an increase in docketed cases from 2009 to 2010.

# Somerset County

2012 Population Estimate: 76,957  
 Class of County: 6th  
 No. of Common Pleas Court Judgeships: 3



## 2012 Civil - Docketed Cases Listed by Case Type

<b>TORT</b>	<b>85</b>	<b>13.2%</b>	<b>REAL PROPERTY</b>	<b>169</b>	<b>26.2%</b>
<i>(does not include mass tort)</i>					
Intentional	8		Ejectment*	5	
Malicious Prosecution	0		Eminent Domain/Condemnation	8	
Motor Vehicle	35		Ground Rent	0	
Nuisance	1		Landlord/Tenant Dispute	12	
Premise Liability	17		Mortgage Foreclosure:		
Product Liability	6		Residential*	123	
Slander/Libel/Defamation	1		Commercial*	1	
Other	17		Partition of Real Property*	1	
<b>MASS TORT</b>	<b>4</b>	<b>0.6%</b>	Quiet Title*	2	
Asbestos	0		Other*	17	
Tobacco	0		<b>CIVIL APPEALS</b>	<b>36</b>	<b>5.6%</b>
Toxic Tort - DES	0		<i>- Administrative Agencies</i>		
Toxic Tort - Implant	0		Board of Assessment*	1	
Toxic Waste	0		Board of Elections*	0	
Other	4		Dept. of Transportation*	25	
<b>PROFESSIONAL LIABILITY</b>	<b>8</b>	<b>1.2%</b>	Zoning Board*	0	
Dental	0		Statutory Appeal - Other*	0	
Legal	0		Other*	10	
Medical Malpractice	6		<b>MISCELLANEOUS</b>	<b>35</b>	<b>5.4%</b>
Other	2		Common Law/		
<b>CONTRACT</b>	<b>309</b>	<b>47.8%</b>	Statutory Arbitration*	0	
<i>(does not include judgments)</i>			Declaratory Judgment*	5	
Buyer Plaintiff	11		Mandamus*	1	
Debt Collection: Credit Card	188		Non-Domestic Relations		
Debt Collection: Other	73		Restraining Order*	0	
Employment Dispute:			Quo Warranto*	0	
Employment Dispute: Discriminatio	1		Replevin*	5	
Employment Dispute: Other	3		Other*	24	
Other	33		<b>TOTAL DOCKETED CASES:</b>	<b>646</b>	<b>100%</b>

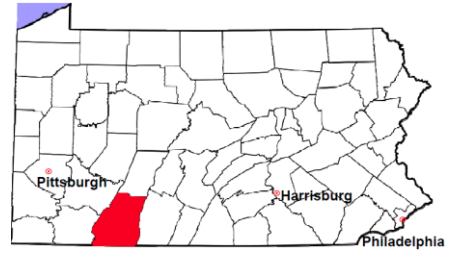
### Of the Docketed Cases:

Pro Se Filings: 32 5.0%      Class Action Suits: 1 0.2%      MDJ Appeals: 36 5.6%

\* Civil Other

# Somerset County

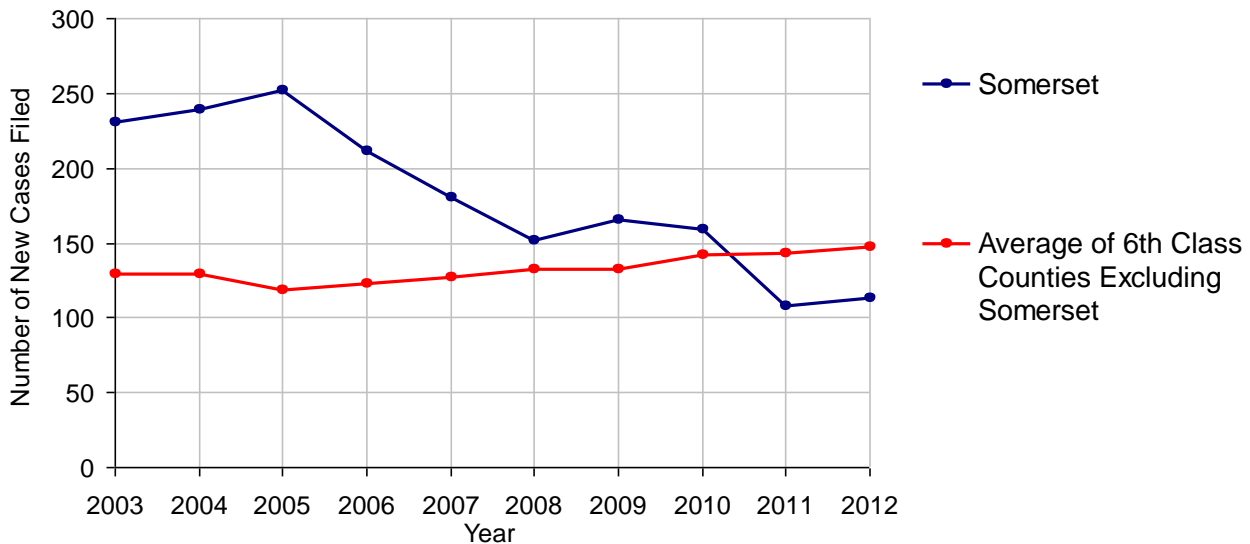
2012 Population Estimate: 76,957  
 Class of County: 6th  
 No. of Common Pleas Court Judgeships: 3



## 2012 Protection From Abuse

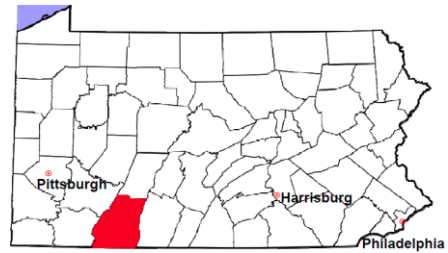
	No. of Petitions
Cases Pending 1/1/2012	14
New Cases Filed in 2012	113
<i>Of these, Petitions Requesting Temporary Orders: 113 (100.0%)</i>	
<i>Temporary Orders DENIED: 11 (9.7%), Temporary Orders GRANTED: 102 (90.3%)</i>	
<b>Cases Available for Processing</b>	<b>127</b>
Processed By:	
Temporary Order DENIED After Ex Parte Hearing and No Evidentiary Hearing Scheduled	1 0.8%
Temporary Order DISMISSED After Evidentiary Hearing and No Final Order Entered	1 0.8%
Final Order DENIED After Evidentiary Hearing Before a Judge	4 3.4%
Final Order GRANTED After Evidentiary Hearing Before a Judge	16 13.4%
Plaintiff Did Not Appear For Evidentiary Hearing	24 20.2%
Final Order by STIPULATION OR AGREEMENT Between the Parties	30 25.2%
Petition WITHDRAWN by Plaintiff	33 27.7%
TRANSFERRED to Another Jurisdiction	0
DECEASED Party	0
Other	10 8.4%
<b>Cases Processed</b>	<b>119 100.0%</b>
<b>Cases Pending 12/31/2012</b>	<b>8</b>

**PFA New Cases Filed, 2003-2012**



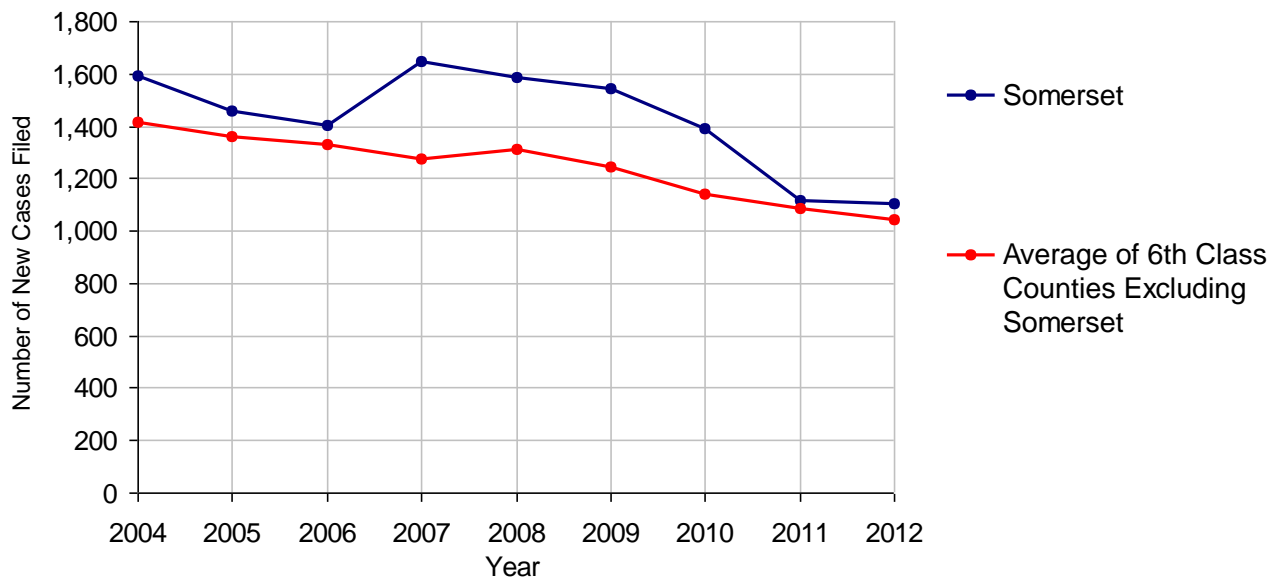
# Somerset County

2012 Population Estimate: 76,957  
 Class of County: 6th  
 No. of Common Pleas Court Judgeships: 3



<b>2012 Spousal &amp; Child Support</b>	<b>No. of Petitions</b>	
Cases Pending 1/1/2012	237	
New Cases Filed in 2012	1,105	
Dockets Transferred In (+)	13	
Dockets Transferred Out (-)	13	
<b>Cases Available for Processing</b>	<b>1,342</b>	
Processed By:		
Judge	17	1.5%
Intake Officer	1,015	92.4%
Hearing Officer	66	6.0%
Other	0	
<b>Cases Processed</b>	<b>1,098</b>	<b>100.0%</b>
<b>Cases Pending 12/31/2012</b>	<b>244</b>	

**Spousal & Child Support New Cases Filed, 2004-2012**

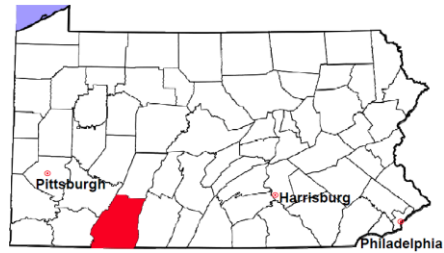


# Somerset County

2012 Population Estimate: 76,957

Class of County: 6th

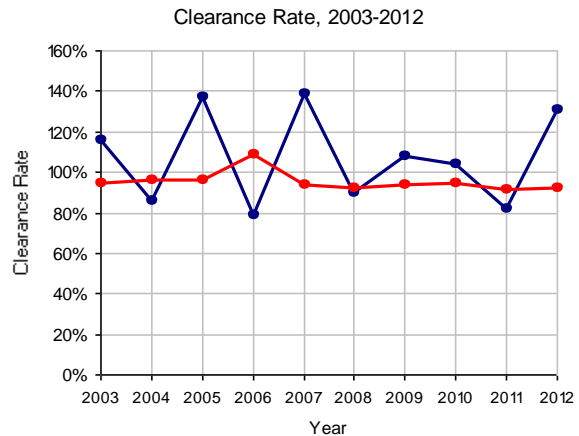
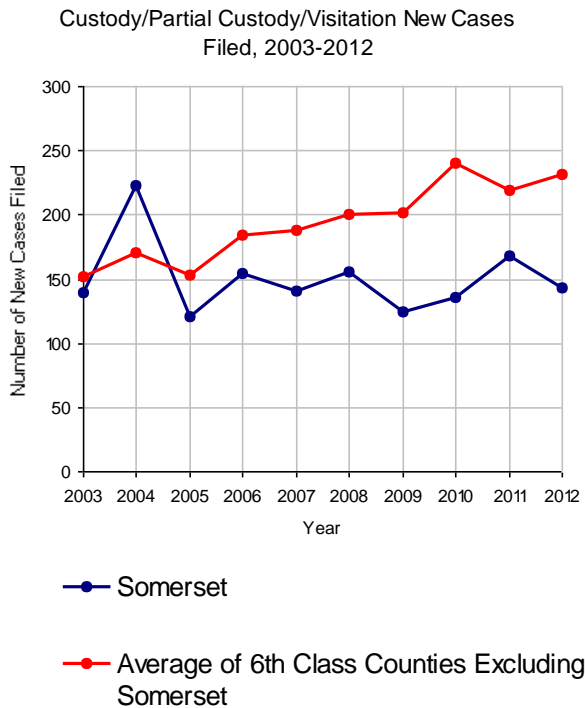
No. of Common Pleas Court Judgeships: 3



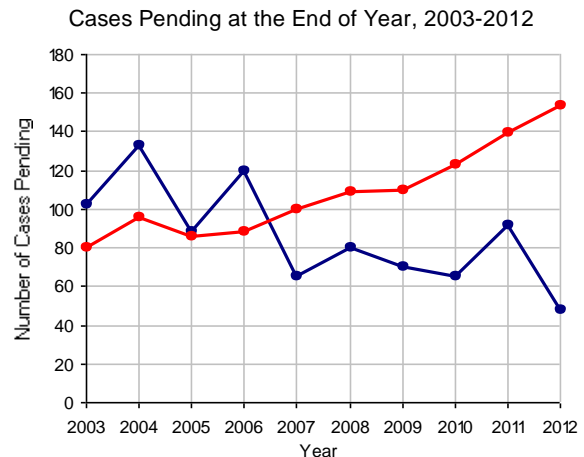
## 2012 Custody/Partial Custody/Visitation

No. of Petitions

Cases Pending 1/1/2012	92
New Cases Filed in 2012	143
<b>Cases Available for Processing</b>	<b>235</b>
Processed By:	
Judge	18 9.6%
Non-Judicial Officer	103 55.1%
Other	66 35.3%
<b>Cases Processed</b>	<b>187 100.0%</b>
<b>Cases Pending 12/31/2012</b>	<b>48</b>

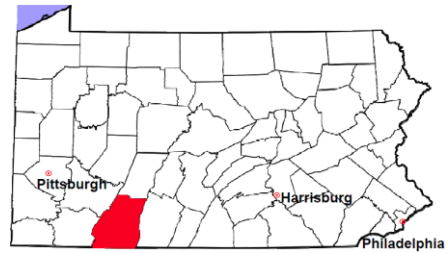


Note: Clearance Rate = Cases Processed / New Cases Filed



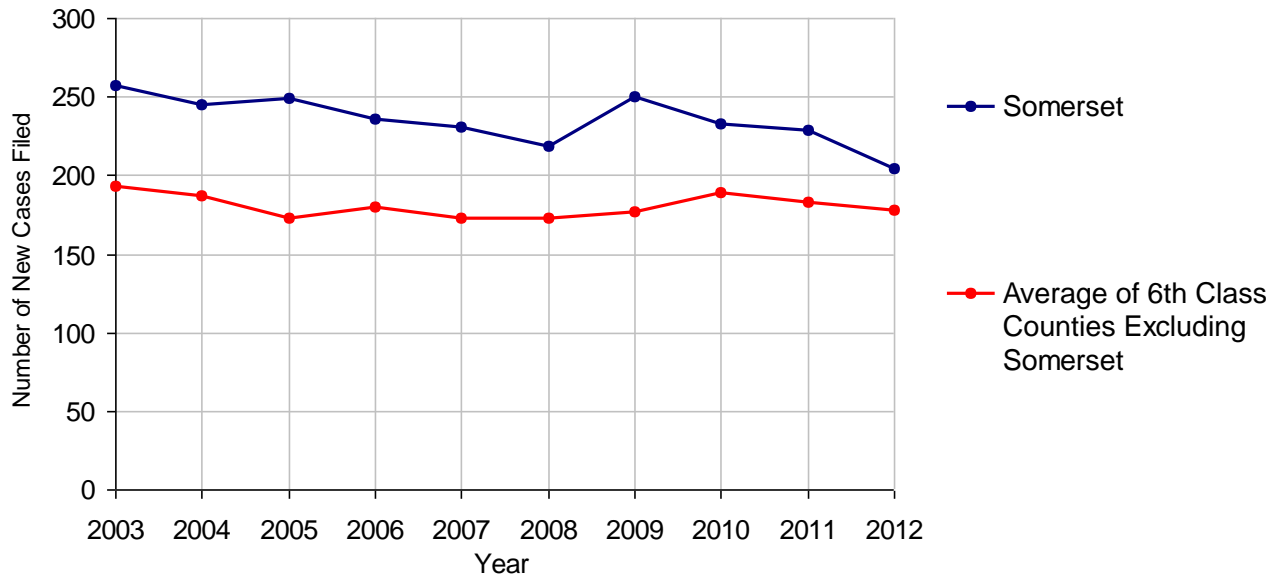
# Somerset County

2012 Population Estimate: 76,957  
 Class of County: 6th  
 No. of Common Pleas Court Judgeships: 3



<b>2012 Divorce</b>	<b>No. of Petitions</b>	
Cases Pending 1/1/2012	667	
New Cases Filed in 2012	204	
<b>Cases Available for Processing</b>	<b>871</b>	
Processed By:		
Contested Before a Judge	0	
Contested Before a Master	0	
Uncontested	183	77.2%
Other	54	22.8%
<b>Cases Processed</b>	<b>237</b>	<b>100.0%</b>
<b>Cases Pending 12/31/2012</b>	<b>634</b>	

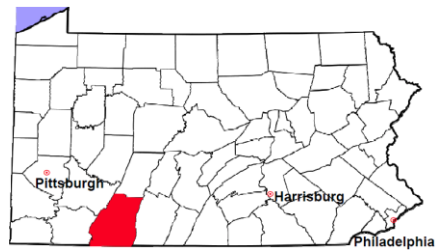
**Divorce New Cases Filed, 2003-2012**





# Somerset County

2012 Population Estimate: 76,957  
 Class of County: 6th  
 No. of Common Pleas Court Judgeships: 3



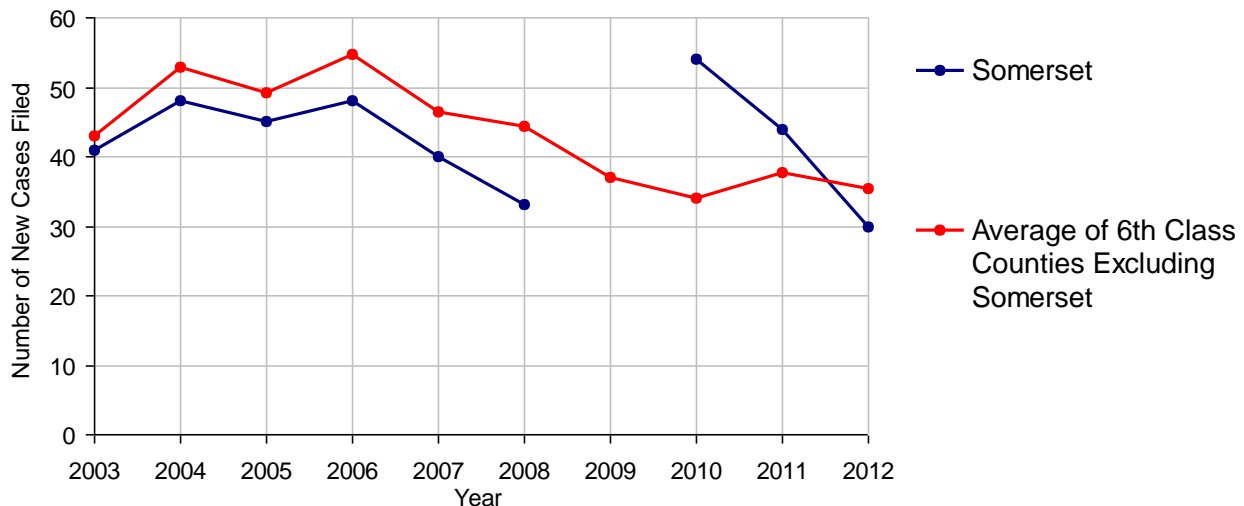
## 2012 Juvenile Dependency - Active Dependent Inventory



	Abuse/ Neglect	Status Offenses	Total
Cases Pending 1/1/2012	3	0	3
New Petitions Filed in 2012	24	6	30
Other	0	0	0
<b>Total Petitions Available for Processing</b>	<b>27</b>	<b>6</b>	<b>33</b>
Processed by:			
Adjudicated Dependent			
Judge	22	6	28
Master	0	0	0
Adjudicated NOT Dependent			
Judge	0	0	0
Master	0	0	0
Withdrawn/Dismissed/Inactive	4	0	4
Other	0	0	0
<b>Total Petitions Processed</b>	<b>26</b>	<b>6</b>	<b>32</b>
<b>Cases Pending 12/31/2012</b>	<b>1</b>	<b>0</b>	<b>1</b>

Data provided by CPCMS

Abuse/Neglect and Status Offenses New Cases Filed, 2003-2012



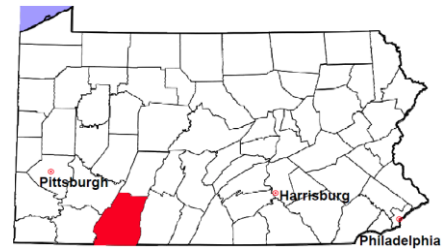
Note: (1) Dependency data for 2002-2010 were collected manually. Dependency data for 2011 and 2012 were provided by CPCMS. (2) Data for 2009 are not available.

# Somerset County

2012 Population Estimate: 76,957

Class of County: 6th

No. of Common Pleas Court Judgeships: 3



## 2012 Juvenile Dependency - Adjudicated Dependent Inventory



	Abuse/ Neglect	Status Offenses	Total
Cases Pending 1/1/2012	50	7	57
New Adjudicated Dependent Cases	22	6	28
Other	0	0	0
<b>Total Adjudicated Dependent Cases</b>	<b>72</b>	<b>13</b>	<b>85</b>
<b><u>Court Supervision Terminated:</u></b>			
Family Reunification	12 37.5%	2 50.0%	14 38.9%
Adoption	6 18.8%	0	6 16.7%
Placement with a Relative/Guardian	7 21.9%	2 50.0%	9 25.0%
Aged Out	5 15.6%	0	5 13.9%
Other Permanency Outcomes*	0	0	0
Other**	2 6.3%	0	2 5.6%
<b>Total Adjudicated Dependent Cases Terminated</b>	<b>32 100.0%</b>	<b>4 100.0%</b>	<b>36 100.0%</b>
<b>Cases Pending 12/31/2012</b>	<b>40</b>	<b>9</b>	<b>49</b>

Data provided by CPCMS

\* Other Permanency Outcomes include: adjudicated delinquent, death due to natural causes, death due to negligence, emancipation, permanent living arrangement, and parent has come forward.

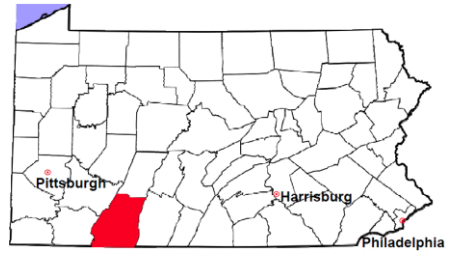
\*\* Other includes cases where court supervision is terminated due to transfer out of jurisdiction, withdrawal and administrative closure.

# Somerset County

2012 Population Estimate: 76,957

Class of County: 6th

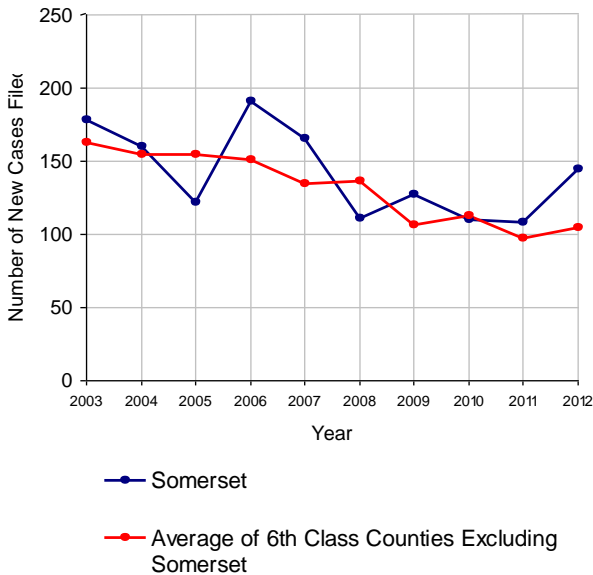
No. of Common Pleas Court Judgeships: 3



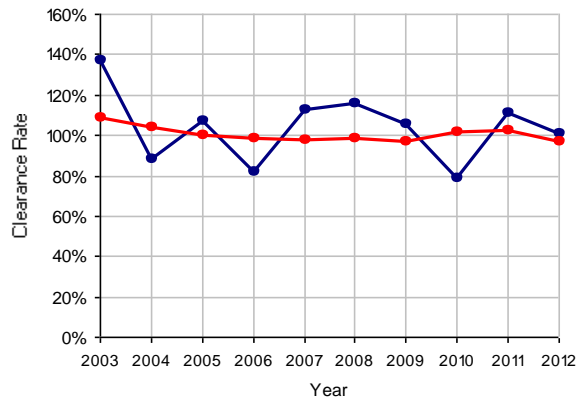
## 2012 Juvenile Delinquency

	No. of Cases	
Cases Pending 1/1/2012	43	
New Cases Filed in 2012	145	
<b>Cases Available for Processing</b>	<b>188</b>	
Processed By:		
Judge	127	87.0%
Non-Judicial Officer	19	13.0%
Other	0	
<b>Cases Processed</b>	<b>146</b>	<b>100.0%</b>
<b>Cases Pending 12/31/2012</b>	<b>42</b>	

Juvenile Delinquency New Cases Filed, 2003-2012

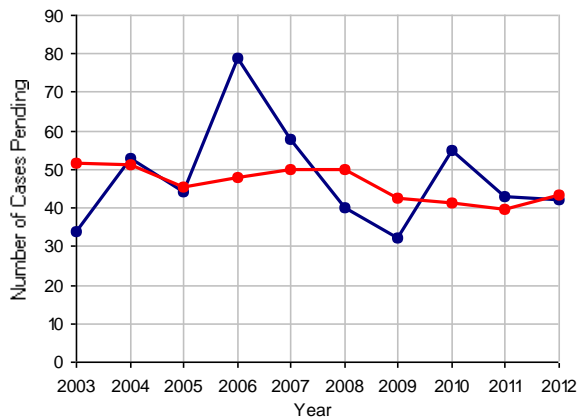


Clearance Rate, 2003-2012



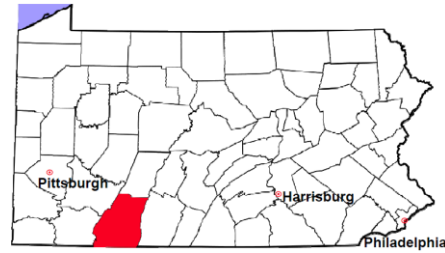
Note: Clearance Rate = Cases Processed / New Cases Filed

Cases Pending at the End of Year, 2003-2012



# Somerset County

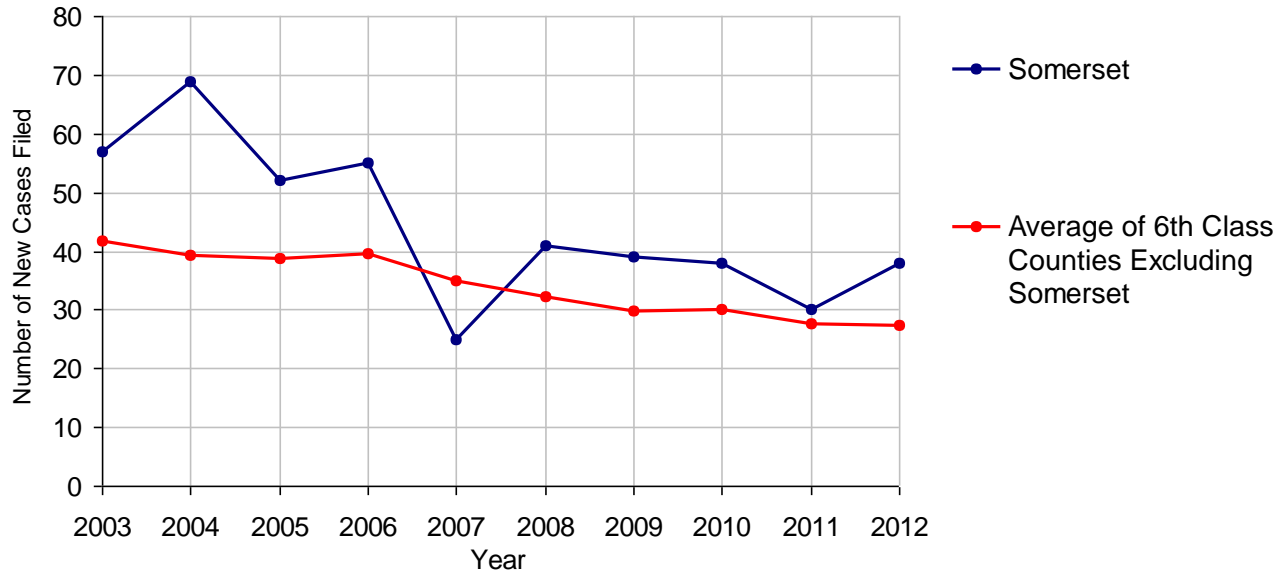
2012 Population Estimate: 76,957  
 Class of County: 6th  
 No. of Common Pleas Court Judgeships: 3



## 2012 Accounts

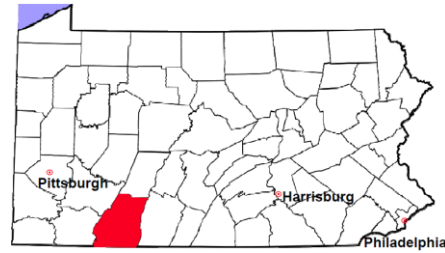
	No. of Cases	
Cases Pending 1/1/2012	6	
New Cases Filed in 2012	38	
<b>Cases Available for Processing</b>	<b>44</b>	
Processed By:		
Contested before a Judge	3	7.5%
Contested before a Non-judicial Officer	0	
Uncontested	36	90.0%
Other	1	2.5%
<b>Cases Processed</b>	<b>40</b>	<b>100.0%</b>
<b>Cases Pending 12/31/2012</b>	<b>4</b>	

Accounts New Cases Filed, 2003-2012



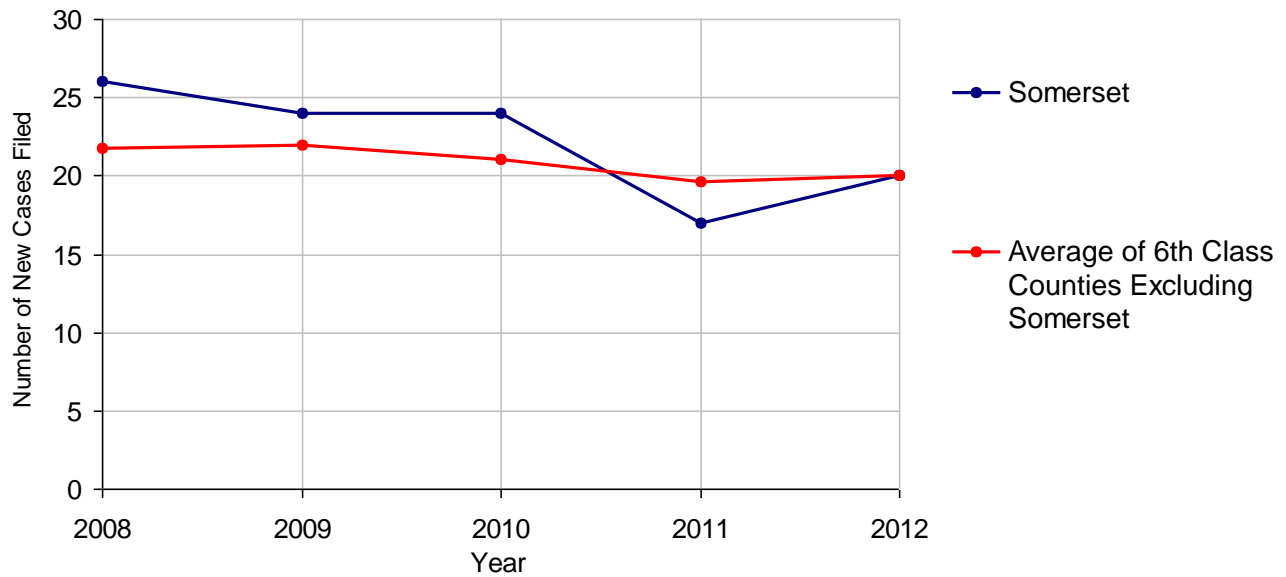
# Somerset County

2012 Population Estimate: 76,957  
 Class of County: 6th  
 No. of Common Pleas Court Judgeships: 3



<b>2012 Adoptions</b>		<b>No. of Cases</b>	
Cases Pending 1/1/2012		2	
New Cases Filed in 2012		20	
<b>Cases Available for Processing</b>		<b>22</b>	
Processed By:			
Contested before a Judge	Granted	0	
	Denied	0	
Uncontested	Granted	22	100.0%
	Denied	0	
Other		0	
<b>Cases Processed</b>		<b>22</b>	<b>100.0%</b>
<b>Cases Pending 12/31/2012</b>		<b>0</b>	

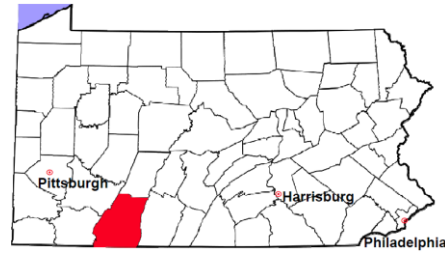
**Adoptions New Cases Filed, 2008-2012**



Note: Prior to 2008, each petition was counted as one new case, regardless of the number of children listed on the petition. Starting in 2008, each child listed on a petition is counted as a separate case. Therefore, statistics since 2008 should not be compared to statistics prior to 2008.

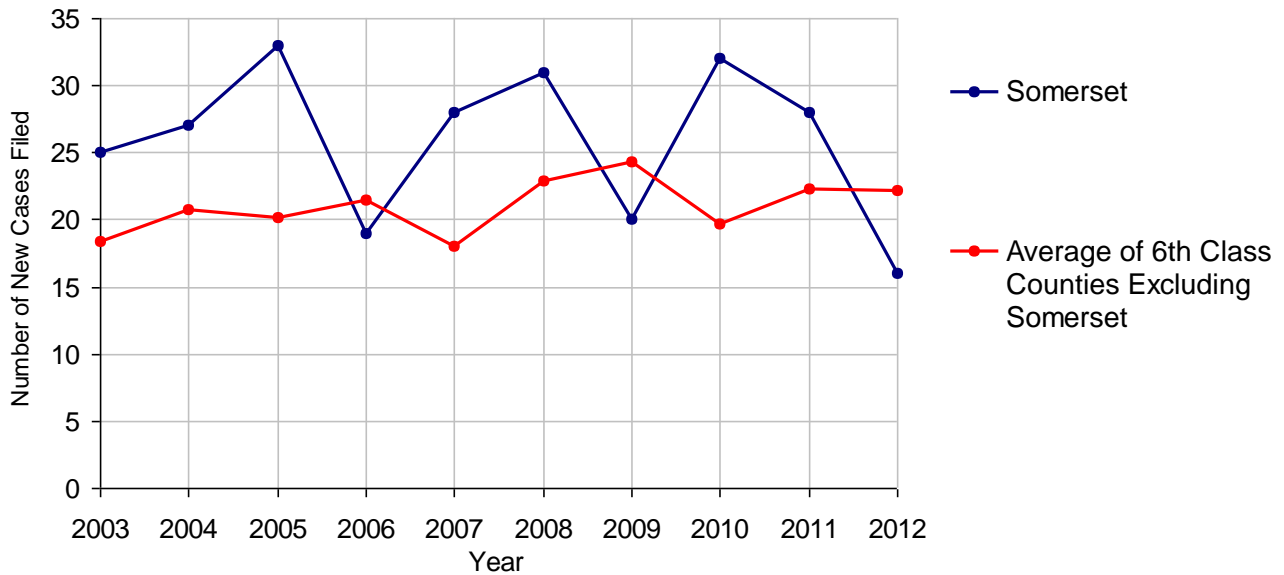
# Somerset County

2012 Population Estimate: 76,957  
 Class of County: 6th  
 No. of Common Pleas Court Judgeships: 3



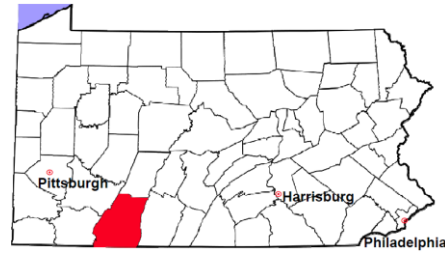
2012 Relinquishments/Terminations	No. of Cases
Cases Pending 1/1/2012	21
New Cases Filed in 2012	16
<b>Cases Available for Processing</b>	<b>37</b>
Processed By:	
Contested before a Judge	0
Uncontested	20 100.0%
Other	0
<b>Cases Processed</b>	<b>20 100.0%</b>
<b>Cases Pending 12/31/2012</b>	<b>17</b>

Relinquishments/Terminations New Cases Filed, 2003-2012



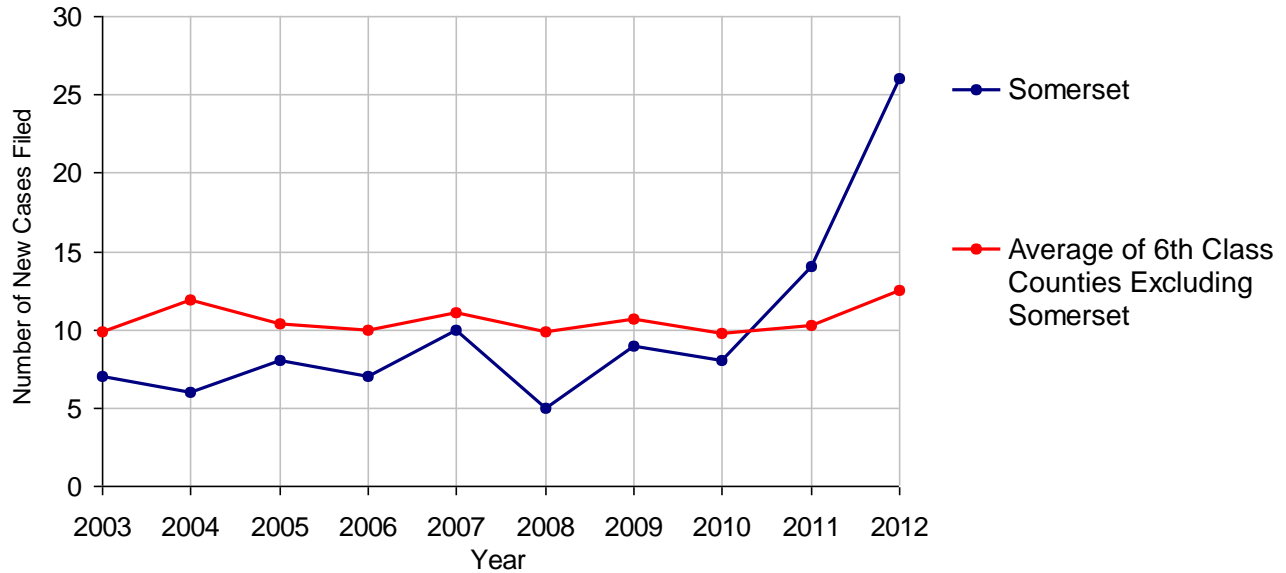
# Somerset County

2012 Population Estimate: 76,957  
 Class of County: 6th  
 No. of Common Pleas Court Judgeships: 3



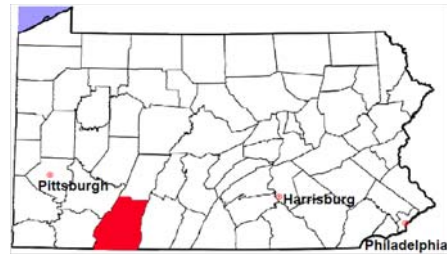
<b>2012 Appointment of Guardians</b>		<b>No. of Cases</b>
Cases Pending 1/1/2012		6
New Cases Filed in 2012		26
<b>Cases Available for Processing</b>		<b>32</b>
Processed By:		
Contested before a Judge	1	3.7%
Uncontested	26	96.3%
Other	0	
<b>Cases Processed</b>	<b>27</b>	<b>100.0%</b>
<b>Cases Pending 12/31/2012</b>		<b>5</b>

**Appointment of Guardians New Cases Filed, 2003-2012**



# Somerset County

2012 Population Estimate: 76,957  
 Class of County: 6th  
 No. of Common Pleas Court Judgeships: 3



## 2012 Jury Yield and Utilization

### Jury Yield

Qualification Questionnaires/Summonses Mailed:	3,307	A		
Returned Undeliverable:	135	B	4.1%	Of Qualification Questionnaires/Summonses Mailed
Not Responded to:	402	C	12.2%	
the Number of Prospective Jurors:				
Disqualified:	844	D	25.5%	
Exempted:	52	E	1.6%	
Excused:	1,267	F	38.3%	
Deferred to New Term:	68	G	2.1%	
Deferred from Previous Term:	93	H	2.8%	
<b>Total Number of Qualified Jurors Available for Service:</b>	<b>632</b>	<b>I</b>	<b>19.1%</b>	

*I=A-B-C-D-E-F-G+H*

### Jury Utilization

the Number of Jurors:				
Reporting for Service:	1,176		186.1%	Of Jurors Qualified and Available
Told Not to Report for Service:	1,117		176.7%	
Sent to Courtroom for Jury Selection (Voir Dire):	873		74.2%	Of Jurors Reporting for Service
Impanelled or Sworn (jurors/alternates):	235		20.0%	
Removed for Cause/Hardship:	118			
Removed by Peremptory Challenge:	170			

### Jury Costs

Total Annual Budget for Juror Operations:	\$80,450.00	J
Average Cost Per Juror:	\$24.33	K

*K=J/A*

In mid-2011, AOPC began utilizing the National Center for State Courts' Jury Managers' Toolbox for collecting jury data. In 2012, the counties began providing additional jury data which included information about the summoning practices in the counties. With this additional data, we can now see not only how many citizens come to our courthouses every day in anticipation of serving on a jury, but the number of citizens actually summonsed and the number of those summonsed who are exempt, excused or disqualified from service. With this wider view of the jury process, we can determine the efficiency with which our courts operate, and with the assistance of the Jury Managers' Toolbox find guidance in streamlining the jury summonsing practices.