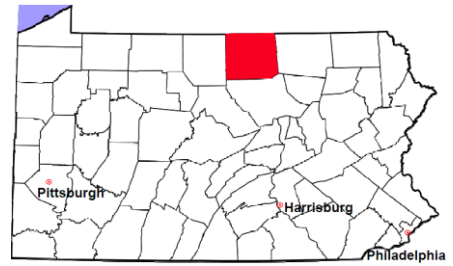


Tioga County

2012 Population Estimate: 42,577

Class of County: 6th

No. of Common Pleas Court Judgeships: 1



2012 Criminal	No. of Cases
---------------	--------------

Cases Pending 1/1/2012	278
New Cases Filed in 2012	581
Reopened Cases	56
Cases Available for Disposition	915
Disposed by:	
Withdrawn/Dismissed	52 7.5%
ARD	232 33.6%
Guilty Plea	301 43.6%
Non-Jury Trial	1 0.1%
Jury Trial	3 0.4%
Inactive	15 2.2%
Other	86 12.5%
Total Cases Disposed	690 100.0%
Cases Pending 12/31/2012	225
Cases Awaiting Sentencing	28

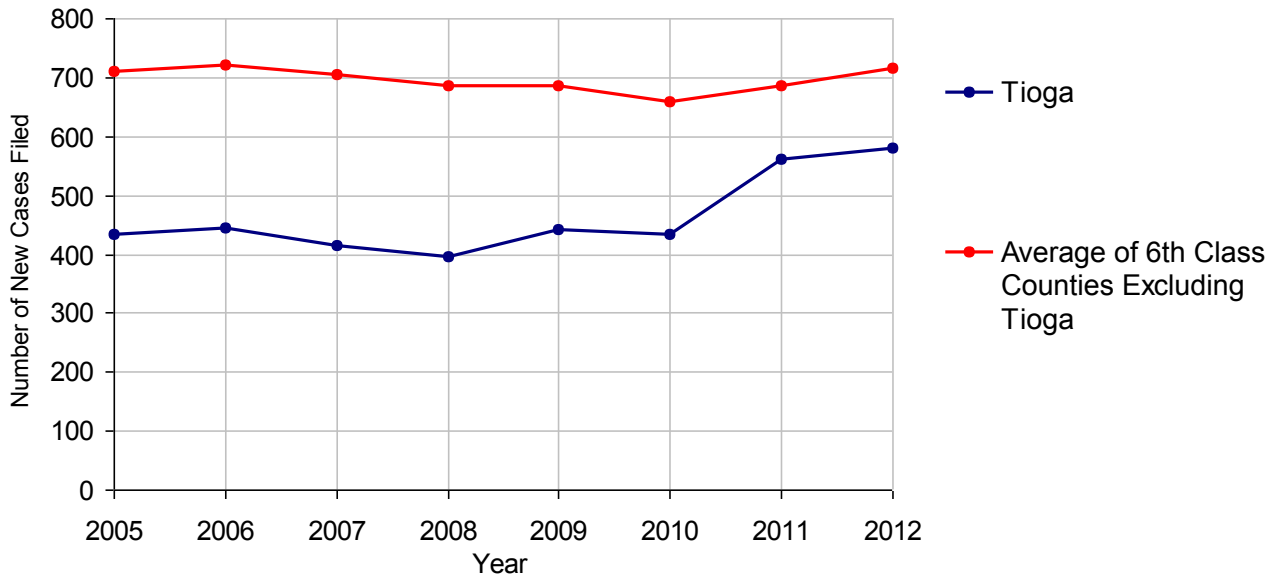


Age of Pending Cases as of 12/31/2012

0-60 Days	101	44.9%
61-120 Days	49	21.8%
121-180 Days	39	17.3%
181-240 Days	14	6.2%
241-300 Days	4	1.8%
301-360 Days	4	1.8%
Over 360 Days	14	6.2%
Total	225	100.0%

Data provided by CPCMS

Criminal New Cases Filed, 2005-2012

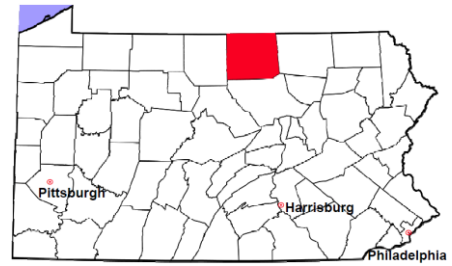


Tioga County

2012 Population Estimate: 42,577

Class of County: 6th

No. of Common Pleas Court Judgeships: 1



2012 Criminal - New Cases by Case Type



Case Type	Felony	Misdemeanor	Summary /Ungraded	Total
Person	18	46	0	64
Property	75	74	0	149
Drug	21	50	1	72
Weapon	8	6	0	14
Public Order	7	43	0	50
Motor Vehicle - DWI/DUI	0	229	0	229
Motor Vehicle - Other	0	3	0	3
Other	0	0	0	0
Total	129	451	1	581
	22.2%	77.6%	0.2%	100.0%

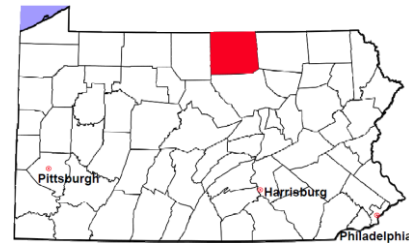
Data provided by CPCMS

Tioga County

2012 Population Estimate: 42,577

Class of County: 6th

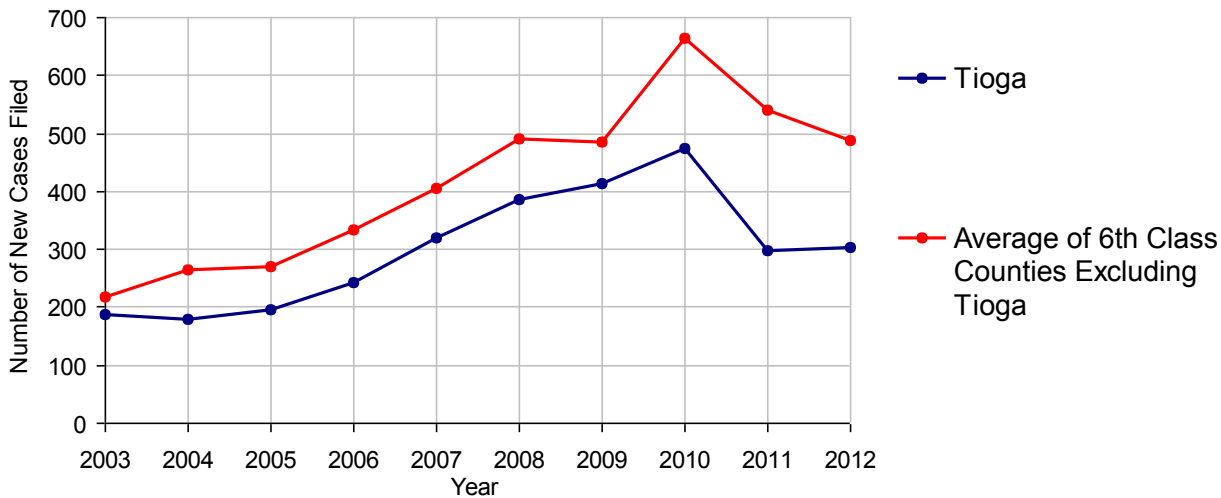
No. of Common Pleas Court Judgeships: 1



2012 Civil	Civil Action	Other	Total
Cases Pending 1/1/2012	2,176	1,318	3,494
Docketed Cases	198	106	304
Arbitration Appeals	0	0	0
Transferred In	2	0	2
Returned to Active	0	11	11
Cases Available for Processing	2,376	1,435	3,811
Disposed By:			
Default Judgments	65	11	76
Cases Decided by Arbitration Board	3	0	3
Dispositive Motions	37	5	42
Settlements	15	3	18
Moved to Inactive Status	791	377	1,168
Transferred/Withdrawn	0	1	1
Administrative Purge	0	0	0
Other	0	0	0
Jury Trial	3	0	3
Non-Jury Trial	4	1	5
Total Cases Disposed	918	398	1,316
Cases Pending 12/31/2012	1,458	1,037	2,495

Age of Pending Cases as of 12/31/2012 (Civil Action Only)		
0-6 months	82	5.6%
7-12 months	89	6.1%
13-18 months	67	4.6%
19-24 months	88	6.0%
25-30 months	140	9.6%
31-36 months	118	8.1%
37-42 months	124	8.5%
43-48 months	148	10.2%
49-54 months	120	8.2%
55-60 months	110	7.5%
61-66 months	104	7.1%
67-72 months	95	6.5%
Over 72 months	173	11.9%
Total	1,458	100.0%

Docketed Cases, 2003-2012



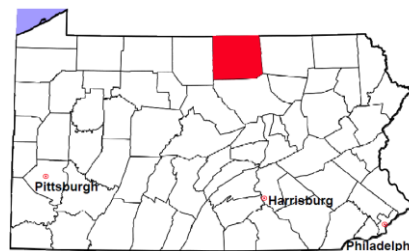
Note: Prior to June 2010, docketed cases under the "Other" category were not reported. The inclusion of these cases starting from June 2010 may contribute to an increase in docketed cases from 2009 to 2010.

Tioga County

2012 Population Estimate: 42,577

Class of County: 6th

No. of Common Pleas Court Judgeships: 1



2012 Civil - Docketed Cases Listed by Case Type

TORT 39 12.8%

(does not include mass tort)

Intentional	3
Malicious Prosecution	0
Motor Vehicle	22
Nuisance	0
Premise Liability	6
Product Liability	3
Slander/Libel/Defamation	0
Other	5

MASS TORT 0

Asbestos	0
Tobacco	0
Toxic Tort - DES	0
Toxic Tort - Implant	0
Toxic Waste	0
Other	0

PROFESSIONAL LIABILITY 3 1.0%

Dental	0
Legal	1
Medical Malpractice	1
Other	1

CONTRACT 149 49.0%

(does not include judgments)

Buyer Plaintiff	0
Debt Collection: Credit Card	71
Debt Collection: Other	71
Employment Dispute:	
Employment Dispute: Discriminatio	0
Employment Dispute: Other	1
Other	6

REAL PROPERTY 63 20.7%

Ejectment*	5
Eminent Domain/Condemnation	0
Ground Rent	0
Landlord/Tenant Dispute	7
Mortgage Forclosure:	
Residential*	25
Commercial*	3
Partition of Real Property*	3
Quiet Title*	11
Other*	9

CIVIL APPEALS 23 7.6%

- Administrative Agencies

Board of Assessment*	1
Board of Elections*	0
Dept. of Transportation*	10
Zoning Board*	1
Statutory Appeal - Other*	5
Other*	6

MISCELLANEOUS 27 8.9%

Common Law/	
Statutory Arbitration*	0
Declaratory Judgment*	3
Mandamus*	1
Non-Domestic Relations	
Restraining Order*	0
Quo Warranto*	0
Replevin*	1
Other*	22

TOTAL DOCKETED CASES: 304 100%

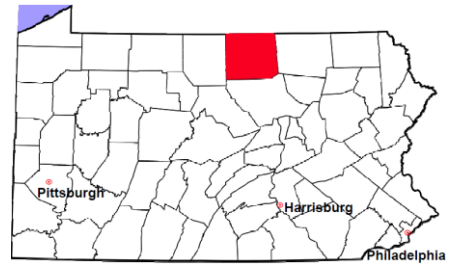
Of the Docketed Cases:

Pro Se Filings:	4	1.3%	Class Action Suits:	0	MDJ Appeals:	12	3.9%
-----------------	---	------	---------------------	---	--------------	----	------

* Civil Other

Tioga County

2012 Population Estimate: 42,577
 Class of County: 6th
 No. of Common Pleas Court Judgeships: 1

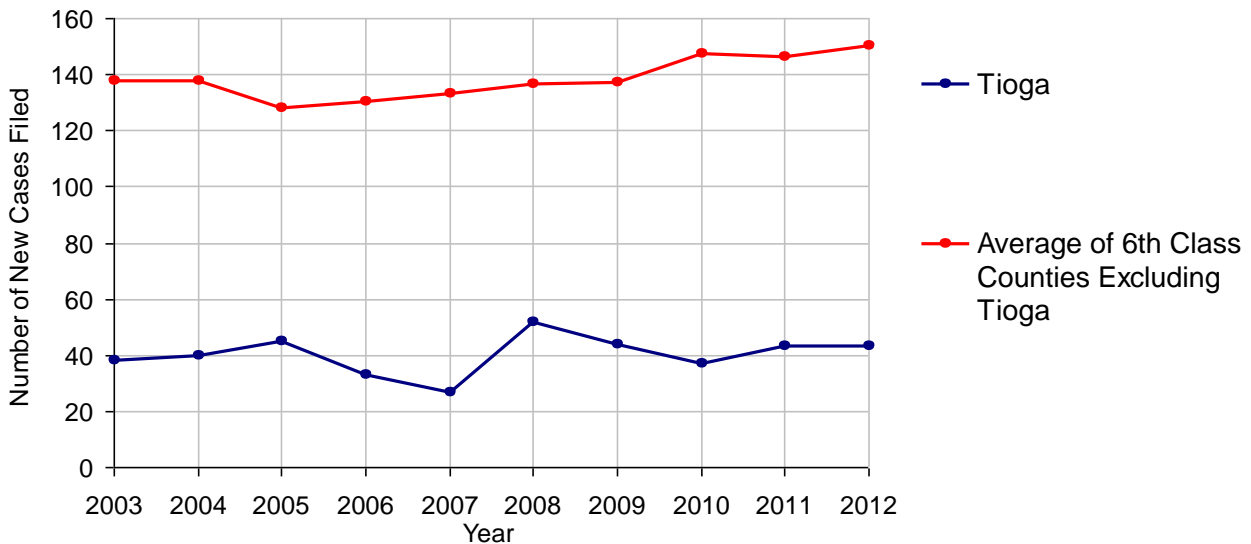


2012 Protection From Abuse

**No. of
Petitions**

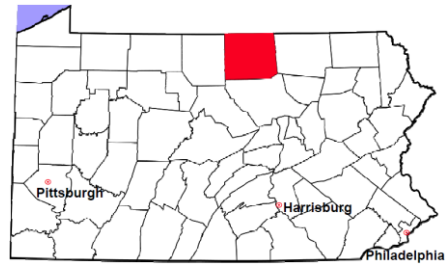
Cases Pending 1/1/2012	7
New Cases Filed in 2012	43
<i>Of these, Petitions Requesting Temporary Orders: 43 (100.0%)</i>	
<i>Temporary Orders DENIED: 0 (0.0%), Temporary Orders GRANTED: 43 (100.0%)</i>	
Cases Available for Processing	50
Processed By:	
Temporary Order DENIED After Ex Parte Hearing and No Evidentiary Hearing Scheduled	0
Temporary Order DISMISSED After Evidentiary Hearing and No Final Order Entered	0
Final Order DENIED After Evidentiary Hearing Before a Judge	0
Final Order GRANTED After Evidentiary Hearing Before a Judge	4 10.0%
Plaintiff Did Not Appear For Evidentiary Hearing	0
Final Order by STIPULATION OR AGREEMENT Between the Parties	24 60.0%
Petition WITHDRAWN by Plaintiff	12 30.0%
TRANSFERRED to Another Jurisdiction	0
DECEASED Party	0
Other	0
Cases Processed	40 100.0%
Cases Pending 12/31/2012	10

PFA New Cases Filed, 2003-2012



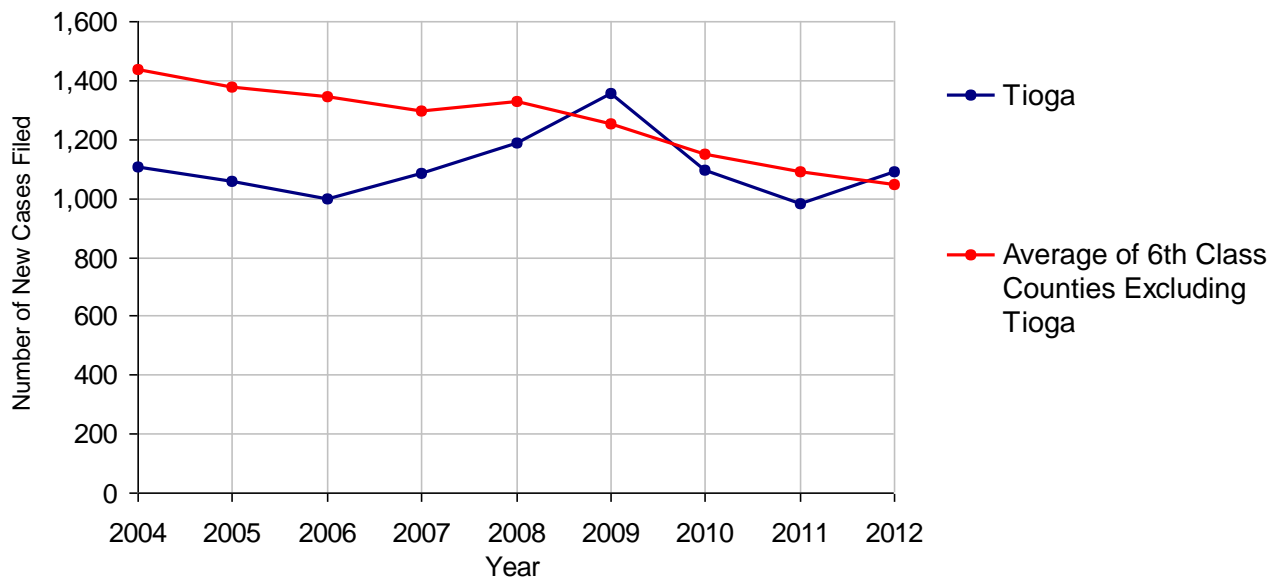
Tioga County

2012 Population Estimate: 42,577
 Class of County: 6th
 No. of Common Pleas Court Judgeships: 1



2012 Spousal & Child Support	No. of Petitions	
Cases Pending 1/1/2012	72	
New Cases Filed in 2012	1,089	
Dockets Transferred In (+)	8	
Dockets Transferred Out (-)	12	
Cases Available for Processing	1,157	
Processed By:		
Judge	40	3.8%
Intake Officer	1,001	96.1%
Hearing Officer	0	
Other	1	0.1%
Cases Processed	1,042	100.0%
Cases Pending 12/31/2012	115	

Spousal & Child Support New Cases Filed, 2004-2012

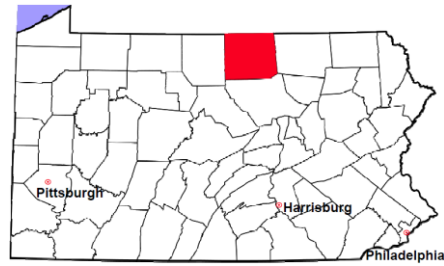


Tioga County

2012 Population Estimate: 42,577

Class of County: 6th

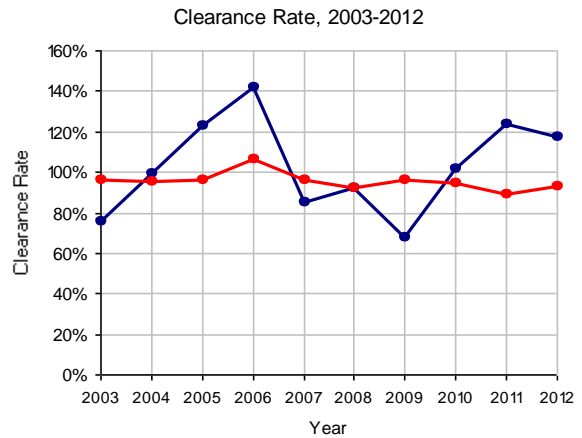
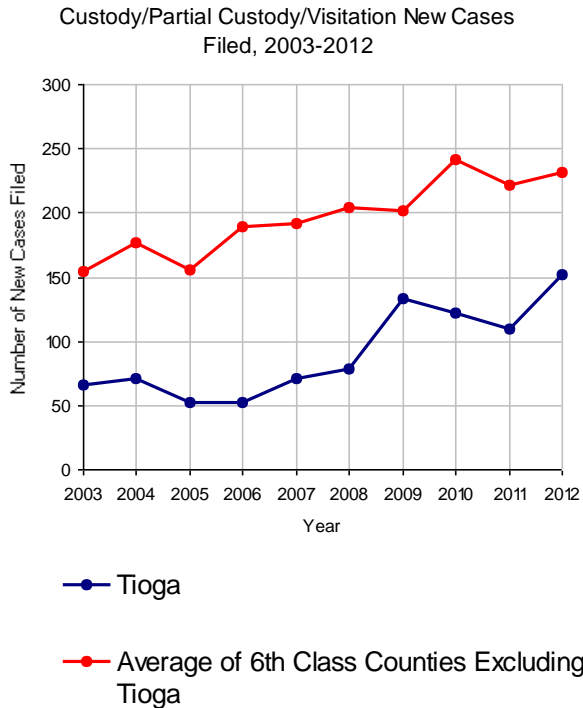
No. of Common Pleas Court Judgeships: 1



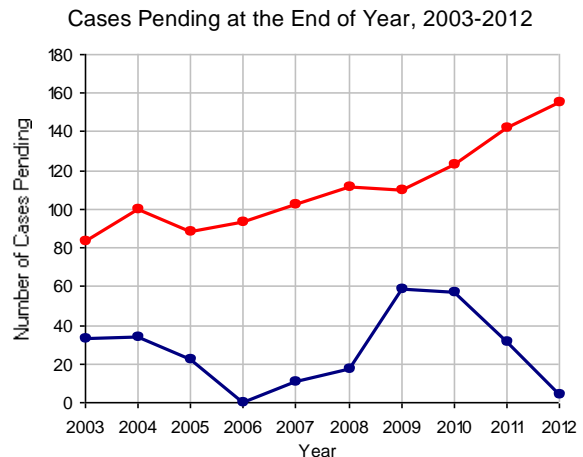
2012 Custody/Partial Custody/Visitation

No. of Petitions

Cases Pending 1/1/2012	31
New Cases Filed in 2012	152
Cases Available for Processing	183
Processed By:	
Judge	2 1.1%
Non-Judicial Officer	176 98.3%
Other	1 0.6%
Cases Processed	179 100.0%
Cases Pending 12/31/2012	4

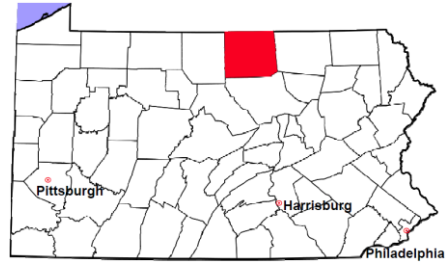


Note: Clearance Rate = Cases Processed / New Cases Filed



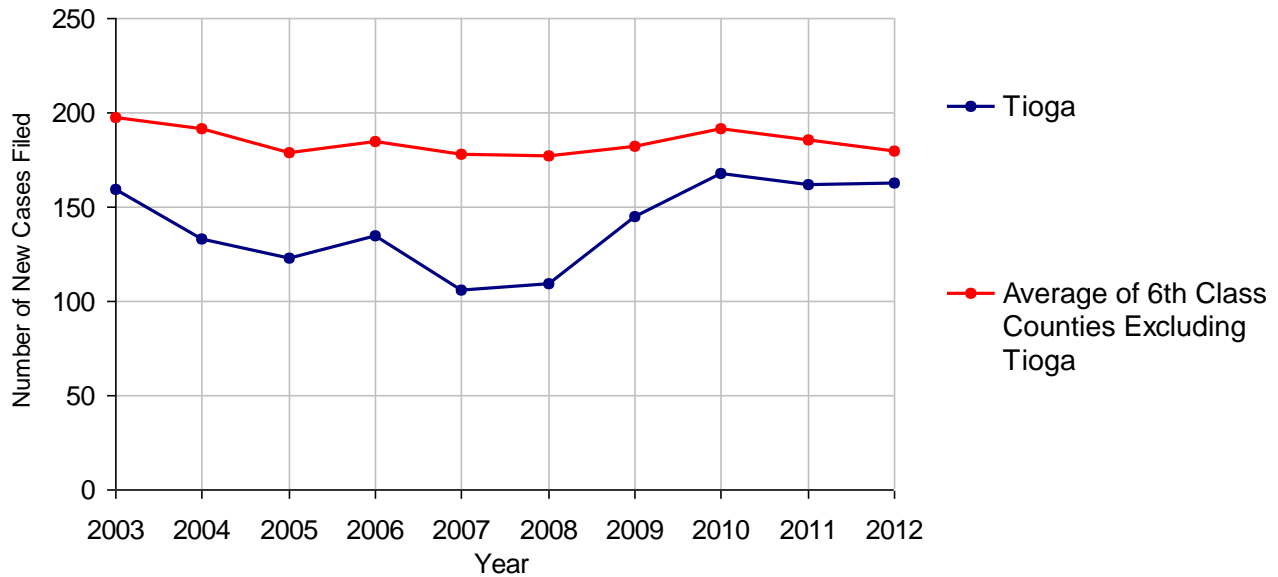
Tioga County

2012 Population Estimate: 42,577
 Class of County: 6th
 No. of Common Pleas Court Judgeships: 1



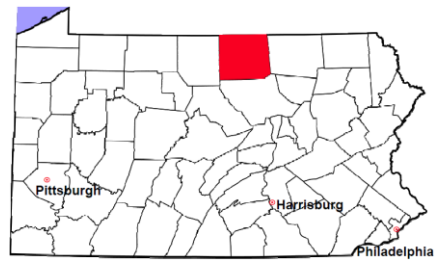
2012 Divorce	No. of Petitions	
Cases Pending 1/1/2012	71	
New Cases Filed in 2012	163	
Cases Available for Processing	234	
Processed By:		
Contested Before a Judge	0	
Contested Before a Master	0	
Uncontested	164	100.0%
Other	0	
Cases Processed	164	100.0%
Cases Pending 12/31/2012	70	

Divorce New Cases Filed, 2003-2012



Tioga County

2012 Population Estimate: 42,577
 Class of County: 6th
 No. of Common Pleas Court Judgeships: 1



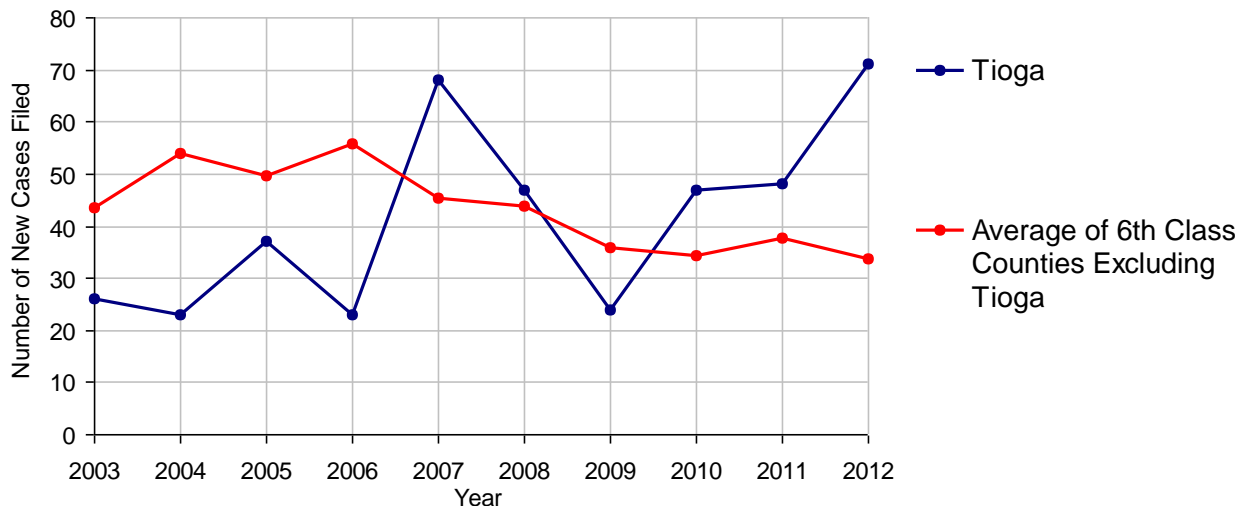
2012 Juvenile Dependency - Active Dependent Inventory



	Abuse/ Neglect	Status Offenses	Total
Cases Pending 1/1/2012	1	0	1
New Petitions Filed in 2012	71	0	71
Other	0	0	0
Total Petitions Available for Processing	72	0	72
Processed by:			
Adjudicated Dependent			
Judge	52	0	52
Master	0	0	0
Adjudicated NOT Dependent			
Judge	2	0	2
Master	0	0	0
Withdrawn/Dismissed/Inactive	0	0	0
Other	16	0	16
Total Petitions Processed	70	0	70
Cases Pending 12/31/2012	2	0	2

Data provided by CPCMS

Abuse/Neglect and Status Offenses New Cases Filed, 2003-2012



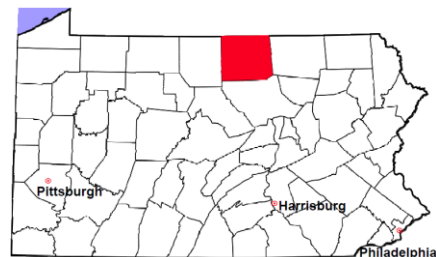
Note: Dependency data for 2002-2010 were collected manually. Dependency data for 2011 and 2012 were provided by CPCMS.

Tioga County

2012 Population Estimate: 42,577

Class of County: 6th

No. of Common Pleas Court Judgeships: 1



2012 Juvenile Dependency - Adjudicated Dependent Inventory



	Abuse/ Neglect	Status Offenses	Total
Cases Pending 1/1/2012	62	3	65
New Adjudicated Dependent Cases	52	0	52
Other	2	0	2
Total Adjudicated Dependent Cases	116	3	119

Court Supervision Terminated:

Family Reunification	1	2.7%	0	1	2.6%	
Adoption	12	32.4%	0	12	30.8%	
Placement with a Relative/Guardian	18	48.6%	1	50.0%	19	48.7%
Aged Out	5	13.5%	1	50.0%	6	15.4%
Other Permanency Outcomes*	0		0		0	
Other**	1	2.7%	0		1	2.6%
Total Adjudicated Dependent Cases Terminated	37	100.0%	2	100.0%	39	100.0%
Cases Pending 12/31/2012	79		1		80	

Data provided by CPCMS

* Other Permanency Outcomes include: adjudicated delinquent, death due to natural causes, death due to negligence, emancipation, permanent living arrangement, and parent has come forward.

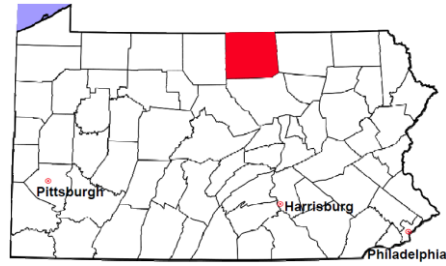
** Other includes cases where court supervision is terminated due to transfer out of jurisdiction, withdrawal and administrative closure.

Tioga County

2012 Population Estimate: 42,577

Class of County: 6th

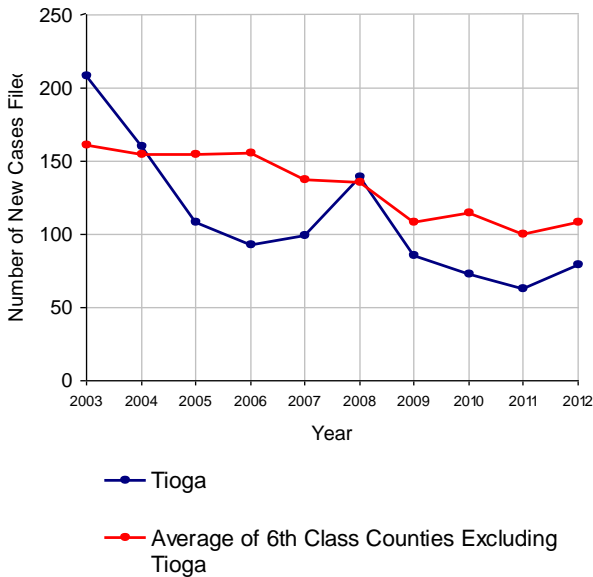
No. of Common Pleas Court Judgeships: 1



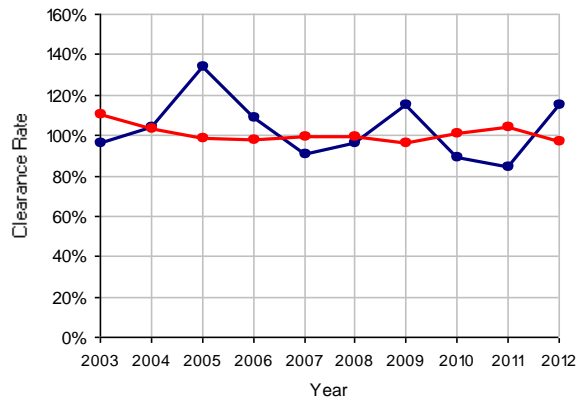
2012 Juvenile Delinquency

	No. of Cases
Cases Pending 1/1/2012	31
New Cases Filed in 2012	79
Cases Available for Processing	110
Processed By:	
Judge	72 79.1%
Non-Judicial Officer	19 20.9%
Other	0
Cases Processed	91 100.0%
Cases Pending 12/31/2012	19

Juvenile Delinquency New Cases Filed, 2003-2012

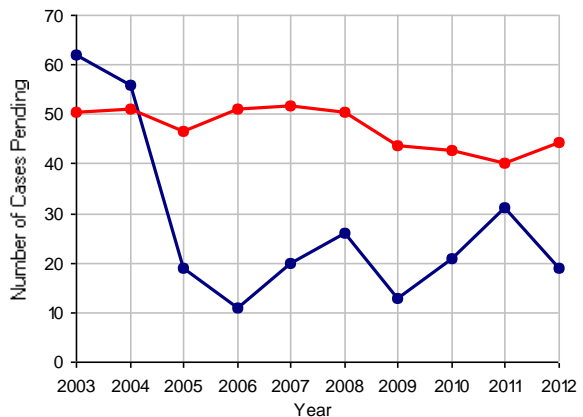


Clearance Rate, 2003-2012



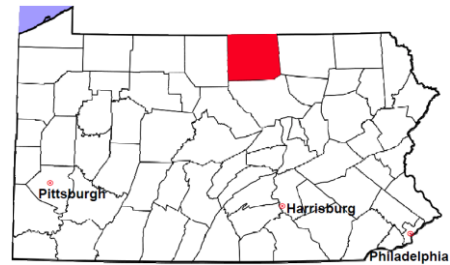
Note: Clearance Rate = Cases Processed / New Cases Filed

Cases Pending at the End of Year, 2003-2012



Tioga County

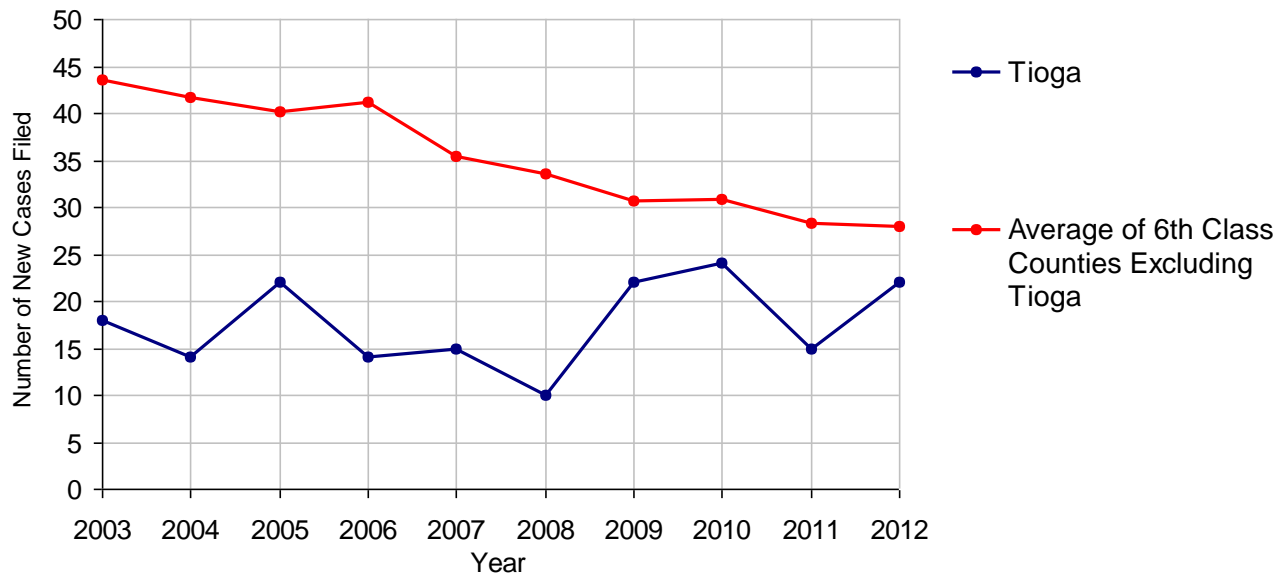
2012 Population Estimate: 42,577
 Class of County: 6th
 No. of Common Pleas Court Judgeships: 1



2012 Accounts	No. of Cases	
Cases Pending 1/1/2012	1 (R)	
New Cases Filed in 2012	22	
Cases Available for Processing	23	
Processed By:		
Contested before a Judge	0	
Contested before a Non-judicial Officer	1	4.5%
Uncontested	18	81.8%
Other	3	13.6%
Cases Processed	22	100.0%
Cases Pending 12/31/2012	1	

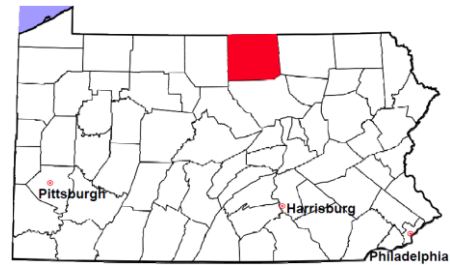
(R) - Revised

Accounts New Cases Filed, 2003-2012



Tioga County

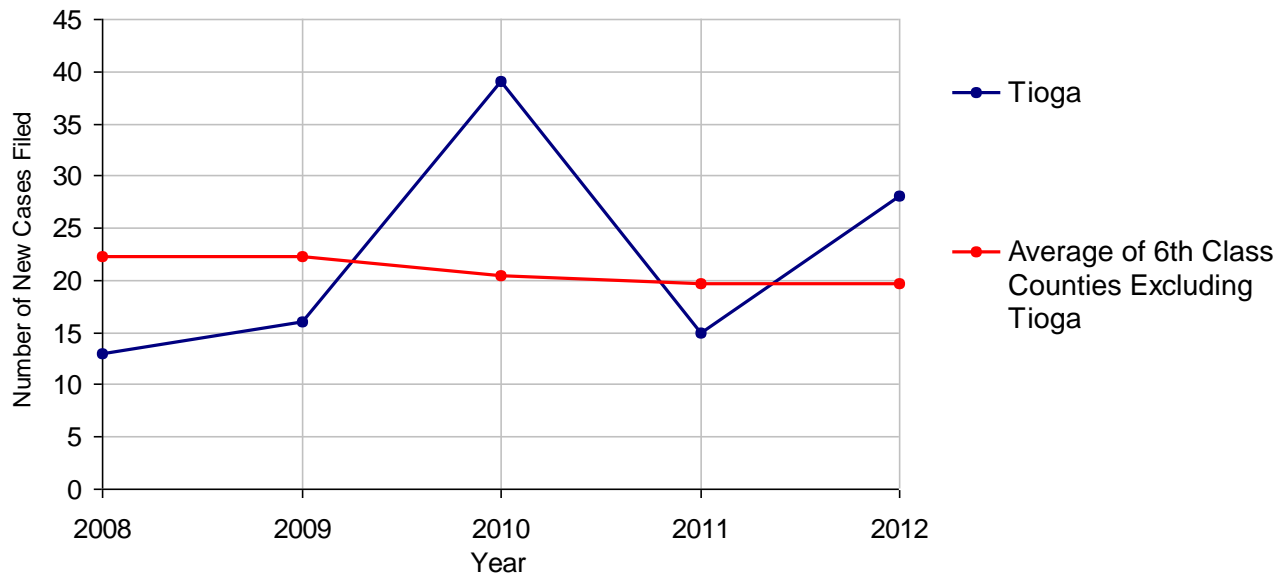
2012 Population Estimate: 42,577
 Class of County: 6th
 No. of Common Pleas Court Judgeships: 1



2012 Adoptions		No. of Cases	
Cases Pending 1/1/2012		7 (R)	
New Cases Filed in 2012		28	
Cases Available for Processing		35	
Processed By:			
Contested before a Judge	Granted	0	
	Denied	0	
Uncontested	Granted	30	93.8%
	Denied	0	
Other		2	6.3%
Cases Processed		32	100.0%
Cases Pending 12/31/2012		3	

(R) - Revised

Adoptions New Cases Filed, 2008-2012



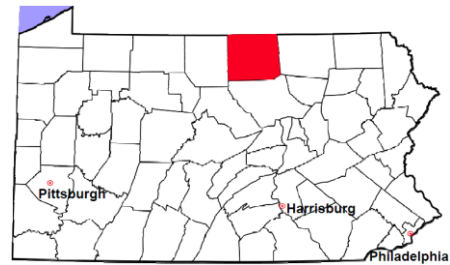
Note: Prior to 2008, each petition was counted as one new case, regardless of the number of children listed on the petition. Starting in 2008, each child listed on a petition is counted as a separate case. Therefore, statistics since 2008 should not be compared to statistics prior to 2008.

Tioga County

2012 Population Estimate: 42,577

Class of County: 6th

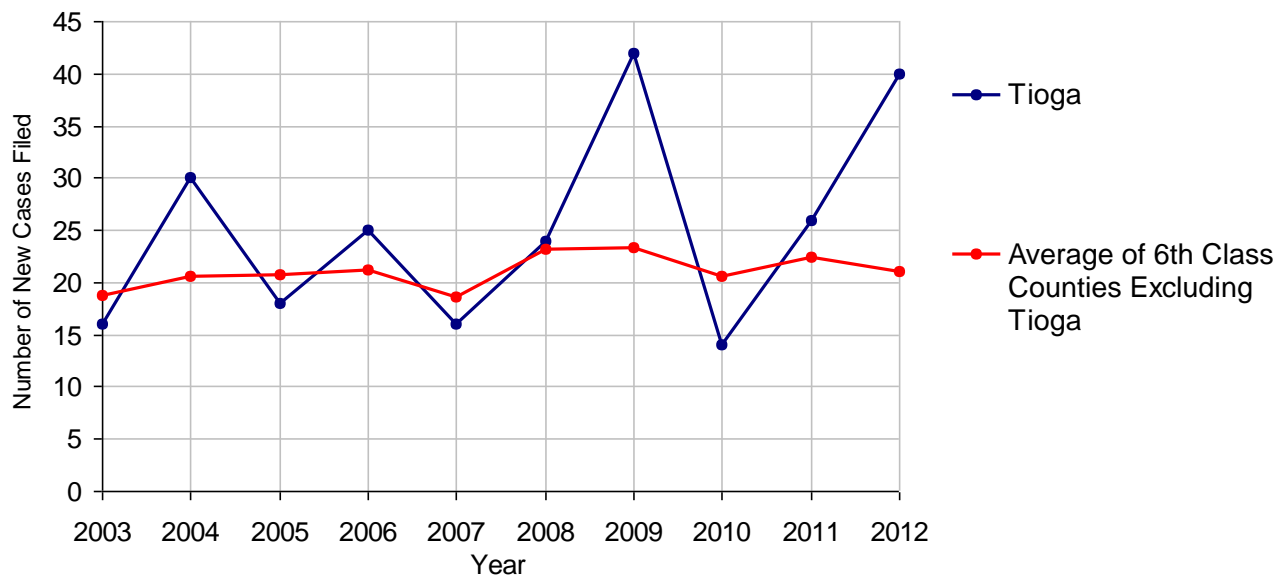
No. of Common Pleas Court Judgeships: 1



2012 Relinquishments/Terminations

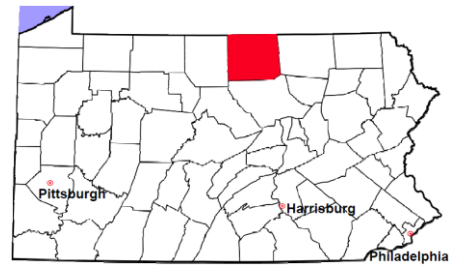
	No. of Cases	
Cases Pending 1/1/2012	8	
New Cases Filed in 2012	40	
Cases Available for Processing	48	
Processed By:		
Contested before a Judge	0	
Uncontested	22	84.6%
Other	4	15.4%
Cases Processed	26	100.0%
Cases Pending 12/31/2012	22	

Relinquishments/Terminations New Cases Filed, 2003-2012



Tioga County

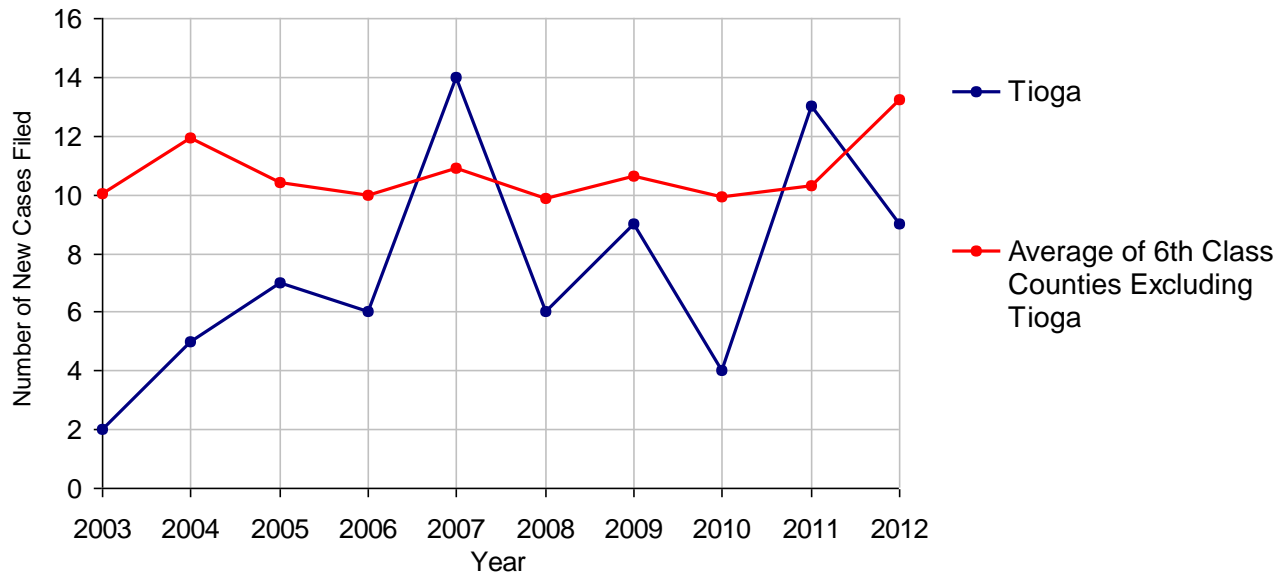
2012 Population Estimate: 42,577
 Class of County: 6th
 No. of Common Pleas Court Judgeships: 1



2012 Appointment of Guardians

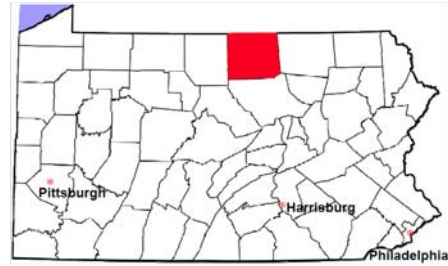
	No. of Cases	
Cases Pending 1/1/2012	1	
New Cases Filed in 2012	9	
Cases Available for Processing	10	
Processed By:		
Contested before a Judge	0	
Uncontested	10	100.0%
Other	0	
Cases Processed	10	100.0%
Cases Pending 12/31/2012	0	

Appointment of Guardians New Cases Filed, 2003-2012



Tioga County

2012 Population Estimate: 42,577
 Class of County: 6th
 No. of Common Pleas Court Judgeships: 1



2012 Jury Yield and Utilization

Jury Yield

Qualification Questionnaires/Summonses Mailed:	3,300	A		
Returned Undeliverable:	386	B	11.7%	Of Qualification Questionnaires/ Summonses Mailed
Not Responded to:	195	C	5.9%	
the Number of Prospective Jurors:				
Disqualified:	318	D	9.6%	
Exempted:	0	E		
Excused:	810	F	24.5%	
Deferred to New Term:	20	G	0.6%	
Deferred from Previous Term:	0	H		
Total Number of Qualified Jurors Available for Service:	1,571	I	47.6%	

$I = A - B - C - D - E - F - G + H$

Jury Utilization

the Number of Jurors:			
Reporting for Service:	413	26.3%	Of Jurors Qualified and Available
Told Not to Report for Service:	0		
Sent to Courtroom for Jury Selection (Voir Dire):	413	100.0%	Of Jurors Reporting for Service
Impanelled or Sworn (jurors/alternates):	96	23.2%	
Removed for Cause/Hardship:	6		
Removed by Peremptory Challenge:	78		

Jury Costs

Total Annual Budget for Juror Operations:	\$69,476.00	J
Average Cost Per Juror:	\$21.05	K

$K = J/A$

In mid-2011, AOPC began utilizing the National Center for State Courts' Jury Managers' Toolbox for collecting jury data. In 2012, the counties began providing additional jury data which included information about the summoning practices in the counties. With this additional data, we can now see not only how many citizens come to our courthouses every day in anticipation of serving on a jury, but the number of citizens actually summonsed and the number of those summonsed who are exempt, excused or disqualified from service. With this wider view of the jury process, we can determine the efficiency with which our courts operate, and with the assistance of the Jury Managers' Toolbox find guidance in streamlining the jury summonsing practices.