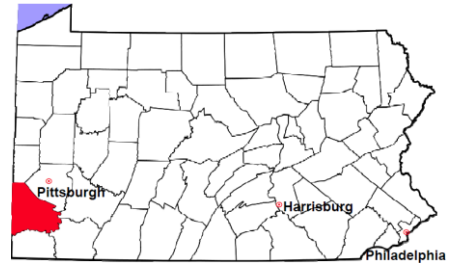


# Washington County

2012 Population Estimate: 208,716

Class of County: 4th

No. of Common Pleas Court Judgeships: 6



2012 Criminal	No. of Cases
---------------	--------------

Cases Pending 1/1/2012	1,093
New Cases Filed in 2012	3,157
Reopened Cases	141
<b>Cases Available for Disposition</b>	<b>4,391</b>

**Disposed by:**

Withdrawn/Dismissed	111	3.6%
ARD	519	16.8%
Guilty Plea	1,918	62.3%
Non-Jury Trial	7	0.2%
Jury Trial	10	0.3%
Inactive	183	5.9%
Other	333	10.8%
<b>Total Cases Disposed</b>	<b>3,081</b>	<b>100.0%</b>

<b>Cases Pending 12/31/2012</b>	<b>1,310</b>
Cases Awaiting Sentencing	26

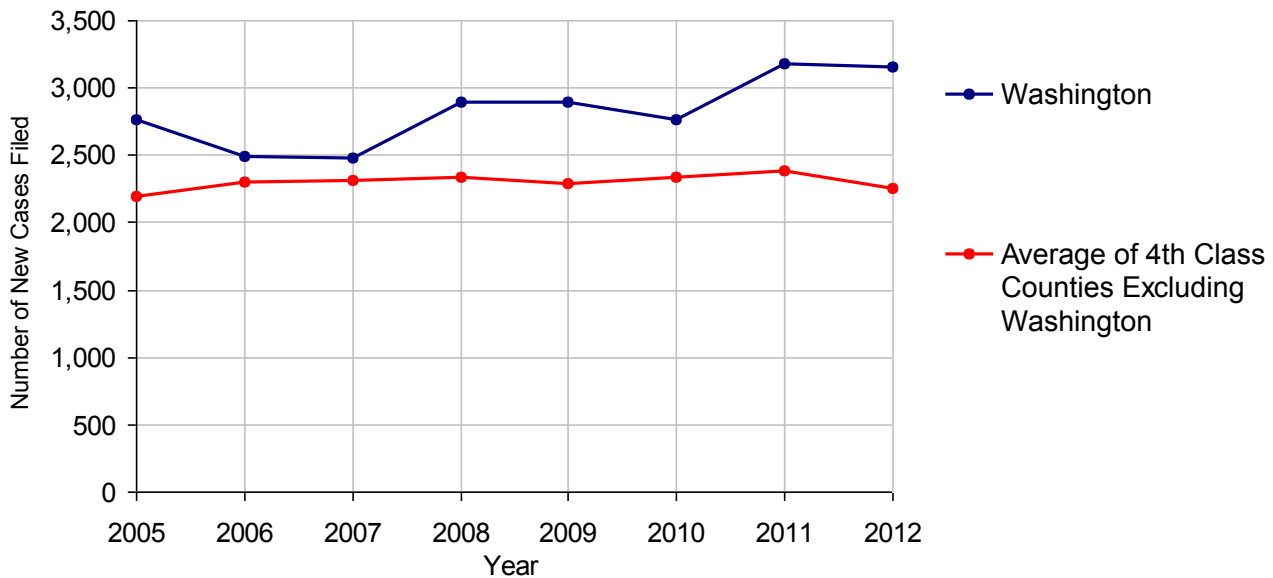
Data provided by CPCMS



**Age of Pending Cases as of 12/31/2012**

0-60 Days	463	35.3%
61-120 Days	373	28.5%
121-180 Days	223	17.0%
181-240 Days	103	7.9%
241-300 Days	52	4.0%
301-360 Days	32	2.4%
Over 360 Days	64	4.9%
<b>Total</b>	<b>1,310</b>	<b>100.0%</b>

**Criminal New Cases Filed, 2005-2012**

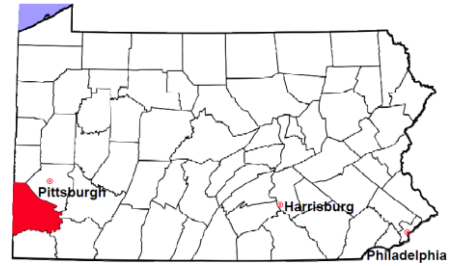


# Washington County

2012 Population Estimate: 208,716

Class of County: 4th

No. of Common Pleas Court Judgeships: 6



## 2012 Criminal - New Cases by Case Type



Case Type	Felony	Misdemeanor	Summary /Ungraded	Total
Person	180	228	24	432
Property	419	398	43	860
Drug	144	400	19	563
Weapon	26	18	3	47
Public Order	63	181	16	260
Motor Vehicle - DWI/DUI	0	960	19	979
Motor Vehicle - Other	1	13	2	16
Other	0	0	0	0
<b>Total</b>	<b>833</b>	<b>2,198</b>	<b>126</b>	<b>3,157</b>
	<b>26.4%</b>	<b>69.6%</b>	<b>4.0%</b>	<b>100.0%</b>

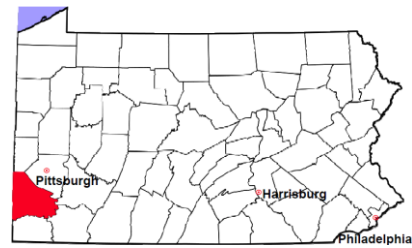
Data provided by CPCMS

# Washington County

2012 Population Estimate: 208,716

Class of County: 4th

No. of Common Pleas Court Judgeships: 6



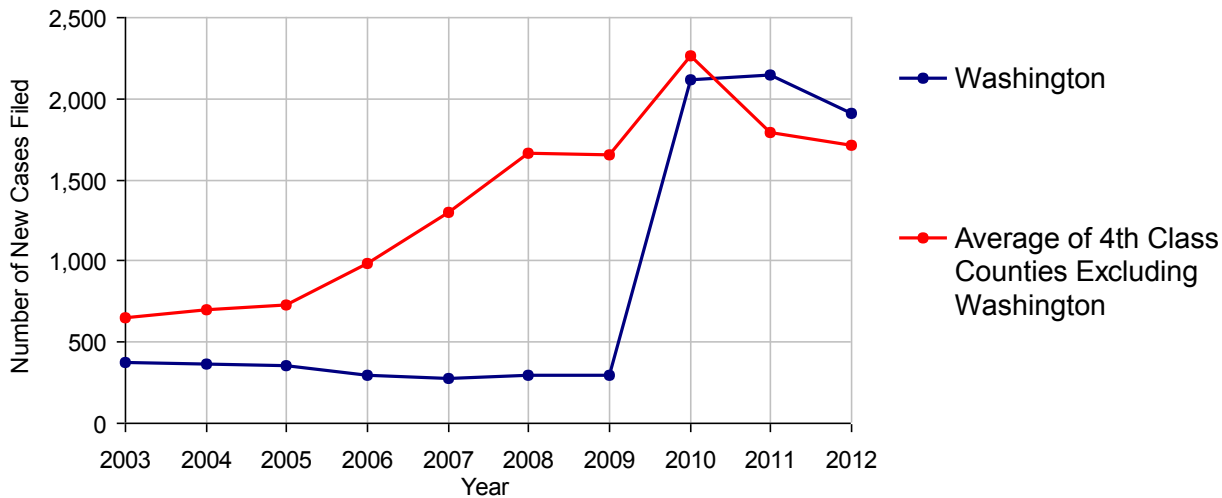
<b>2012 Civil</b>	<b>Civil Action</b>	<b>Other</b>	<b>Total</b>
Cases Pending 1/1/2012	254	1,143	1,397 (R)
Docketed Cases	722	1,189	1,911
Arbitration Appeals	7	24	31
Transferred In	0	0	0
Returned to Active	9	0	9
<b>Cases Available for Processing</b>	<b>992</b>	<b>2,356</b>	<b>3,348</b>
Disposed By:			
Default Judgments	544	146	690
Cases Decided by Arbitration Board	15	20	35
Dispositive Motions	0	17	17
Settlements	73	14	87
Moved to Inactive Status	0	0	0
Transferred/Withdrawn	65	21	86
Administrative Purge	120	338	458
Other	5	1	6
Jury Trial	8	6	14
Non-Jury Trial	8	4	12
<b>Total Cases Disposed</b>	<b>838</b>	<b>567</b>	<b>1,405</b>
<b>Cases Pending 12/31/2012</b>	<b>154</b>	<b>1,789</b>	<b>1,943</b>

### Age of Pending Cases as of 12/31/2012 (Civil Action Only)

0-6 months	55	35.7%
7-12 months	48	31.2%
13-18 months	20	13.0%
19-24 months	16	10.4%
25-30 months	7	4.5%
31-36 months	3	1.9%
37-42 months	2	1.3%
43-48 months	2	1.3%
49-54 months	0	
55-60 months	0	
61-66 months	1	0.6%
67-72 months	0	
Over 72 months	0	
<b>Total</b>	<b>154</b>	<b>100.0%</b>

(R) - Revised

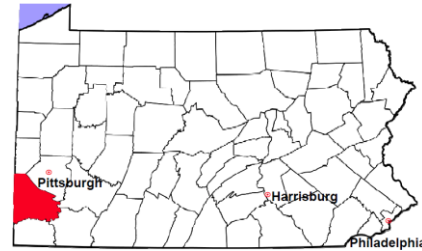
Docketed Cases, 2003-2012



Note: Prior to June 2010, docketed cases under the "Other" category were not reported. The inclusion of these cases starting from June 2010 may contribute to an increase in docketed cases from 2009 to 2010.

# Washington County

2012 Population Estimate: 208,716  
 Class of County: 4th  
 No. of Common Pleas Court Judgeships: 6



## 2012 Civil - Docketed Cases Listed by Case Type

<b>TORT</b>	<b>280</b>	<b>14.7%</b>
<i>(does not include mass tort)</i>		
Intentional	280	
Malicious Prosecution	0	
Motor Vehicle	0	
Nuisance	0	
Premise Liability	0	
Product Liability	0	
Slander/Libel/Defamation	0	
Other	0	
<b>MASS TORT</b>	<b>18</b>	<b>0.9%</b>
Asbestos	18	
Tobacco	0	
Toxic Tort - DES	0	
Toxic Tort - Implant	0	
Toxic Waste	0	
Other	0	
<b>PROFESSIONAL LIABILITY</b>	<b>38</b>	<b>2.0%</b>
Dental	0	
Legal	0	
Medical Malpractice	38	
Other	0	
<b>CONTRACT</b>	<b>354</b>	<b>18.5%</b>
<i>(does not include judgments)</i>		
Buyer Plaintiff	0	
Debt Collection: Credit Card	354	
Debt Collection: Other	0	
Employment Dispute:		
Employment Dispute: Discriminatio	0	
Employment Dispute: Other	0	
Other	0	

<b>REAL PROPERTY</b>	<b>545</b>	<b>28.5%</b>
Ejectment*	47	
Eminent Domain/Condemnation	13	
Ground Rent	0	
Landlord/Tenant Dispute	32	
Mortgage Foreclosure:		
Residential*	400	
Commercial*	0	
Partition of Real Property*	34	
Quiet Title*	17	
Other*	2	
<b>CIVIL APPEALS</b>	<b>555</b>	<b>29.0%</b>
<i>- Administrative Agencies</i>		
Board of Assessment*	107	
Board of Elections*	0	
Dept. of Transportation*	109	
Zoning Board*	3	
Statutory Appeal - Other*	0	
Other*	336	
<b>MISCELLANEOUS</b>	<b>121</b>	<b>6.3%</b>
Common Law/		
Statutory Arbitration*	66	
Declaratory Judgment*	18	
Mandamus*	1	
Non-Domestic Relations		
Restraining Order*	0	
Quo Warranto*	0	
Replevin*	15	
Other*	21	
<b>TOTAL DOCKETED CASES:</b>	<b>1,911</b>	<b>100%</b>

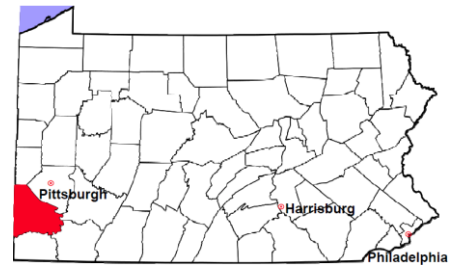
### Of the Docketed Cases:

Pro Se Filings: 41 2.1%      Class Action Suits: 0      MDJ Appeals: 334 17.5%

\* Civil Other

# Washington County

2012 Population Estimate: 208,716  
 Class of County: 4th  
 No. of Common Pleas Court Judgeships: 6



## 2012 Protection From Abuse

**No. of  
Petitions**

Cases Pending 1/1/2012 190

New Cases Filed in 2012 614

*Of these, Petitions Requesting Temporary Orders: 614 (100.0%)*

*Temporary Orders DENIED: 107 (17.4%), Temporary Orders GRANTED: 507 (82.6%)*

**Cases Available for Processing 804**

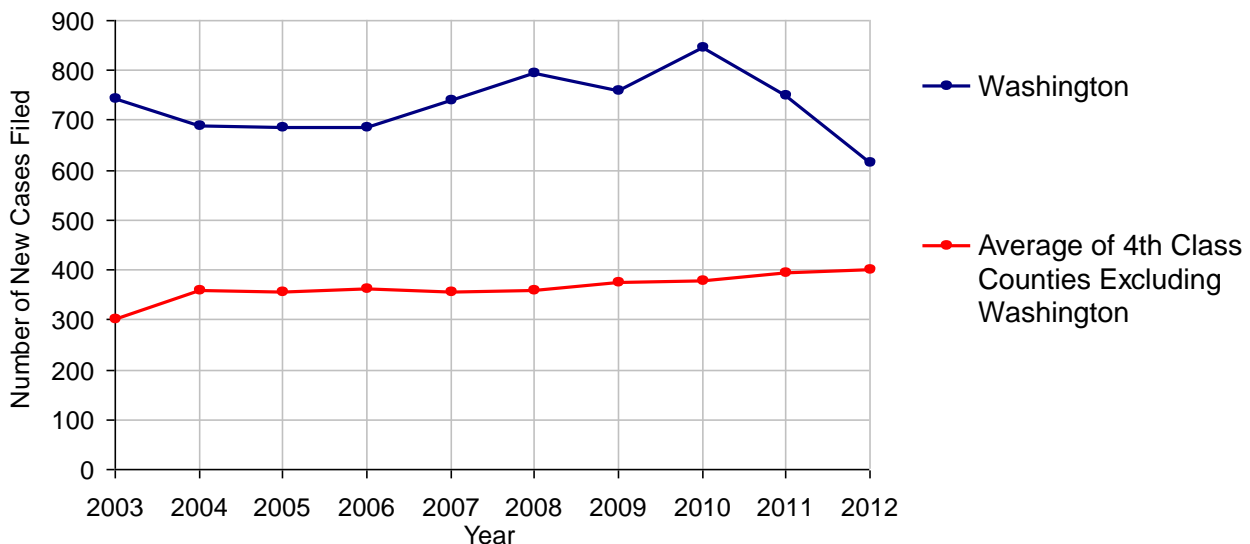
Processed By:

Temporary Order DENIED After Ex Parte Hearing and No Evidentiary Hearing Scheduled	0	
Temporary Order DISMISSED After Evidentiary Hearing and No Final Order Entered	0	
Final Order DENIED After Evidentiary Hearing Before a Judge	28	4.9%
Final Order GRANTED After Evidentiary Hearing Before a Judge	129	22.6%
Plaintiff Did Not Appear For Evidentiary Hearing	151	26.5%
Final Order by STIPULATION OR AGREEMENT Between the Parties	122	21.4%
Petition WITHDRAWN by Plaintiff	80	14.0%
TRANSFERRED to Another Jurisdiction	0	
DECEASED Party	0	
Other	60	10.5%

**Cases Processed 570 100.0%**

**Cases Pending 12/31/2012 234**

**PFA New Cases Filed, 2003-2012**

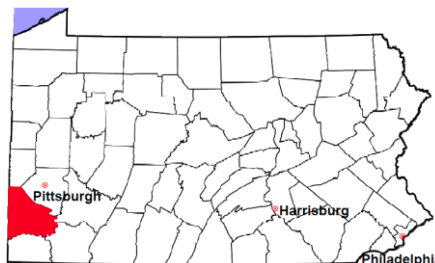


# Washington County

2012 Population Estimate: 208,716

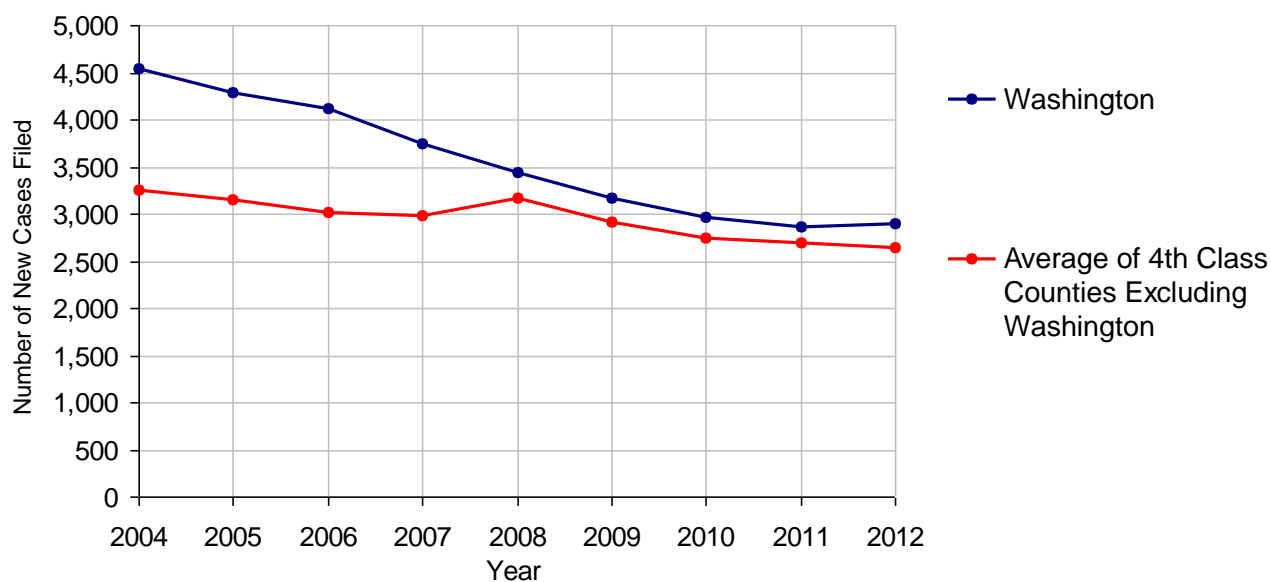
Class of County: 4th

No. of Common Pleas Court Judgeships: 6



<b>2012 Spousal &amp; Child Support</b>	<b>No. of Petitions</b>	
Cases Pending 1/1/2012	505	
New Cases Filed in 2012	2,899	
Dockets Transferred In (+)	20	
Dockets Transferred Out (-)	34	
<b>Cases Available for Processing</b>	<b>3,390</b>	
Processed By:		
Judge	46	1.6%
Intake Officer	2,630	93.2%
Hearing Officer	147	5.2%
Other	0	
<b>Cases Processed</b>	<b>2,823</b>	<b>100.0%</b>
<b>Cases Pending 12/31/2012</b>	<b>567</b>	

**Spousal & Child Support New Cases Filed, 2004-2012**



# Washington County

2012 Population Estimate: 208,716

Class of County: 4th

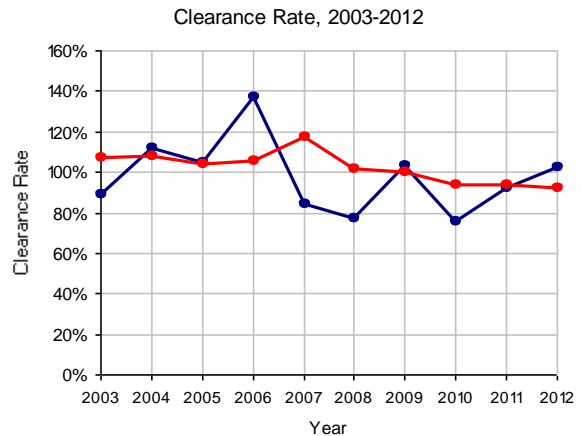
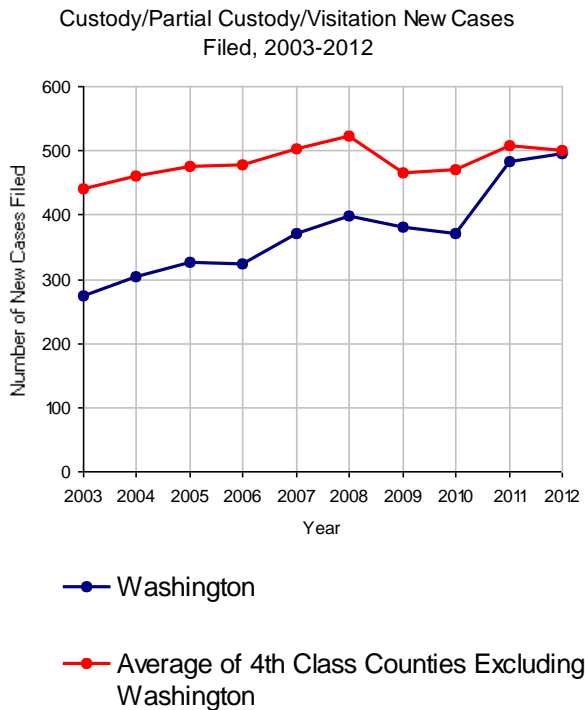
No. of Common Pleas Court Judgeships: 6



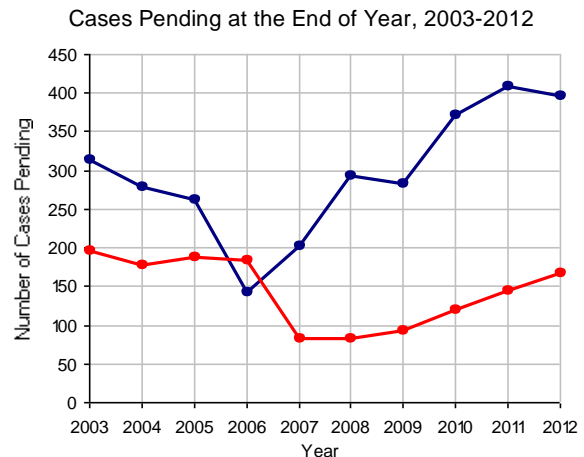
## 2012 Custody/Partial Custody/Visitation

No. of  
Petitions

Cases Pending 1/1/2012	408
New Cases Filed in 2012	495
<b>Cases Available for Processing</b>	<b>903</b>
Processed By:	
Judge	67 13.2%
Non-Judicial Officer	320 63.1%
Other	120 23.7%
<b>Cases Processed</b>	<b>507 100.0%</b>
<b>Cases Pending 12/31/2012</b>	<b>396</b>

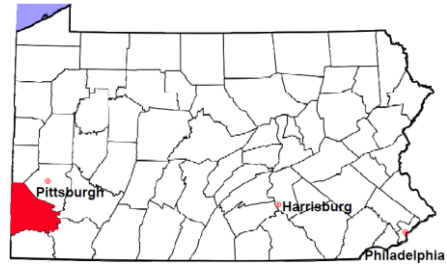


Note: Clearance Rate = Cases Processed / New Cases Filed



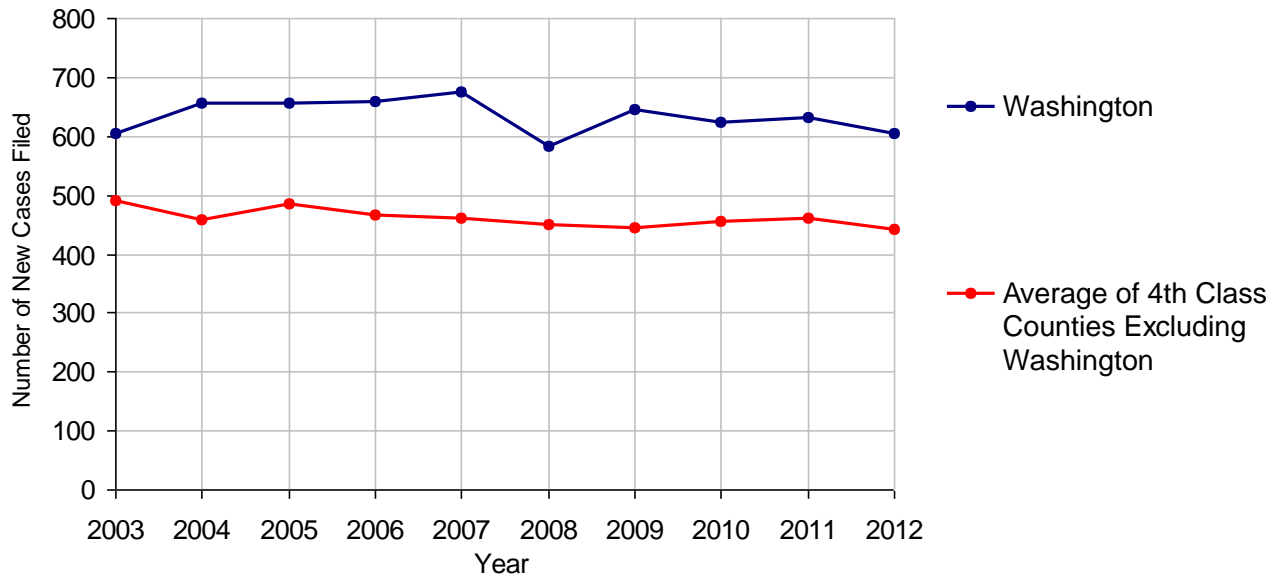
# Washington County

2012 Population Estimate: 208,716  
 Class of County: 4th  
 No. of Common Pleas Court Judgeships: 6



<b>2012 Divorce</b>	<b>No. of Petitions</b>	
Cases Pending 1/1/2012	905	
New Cases Filed in 2012	606	
<b>Cases Available for Processing</b>	<b>1,511</b>	
Processed By:		
Contested Before a Judge	9	1.6%
Contested Before a Master	85	14.8%
Uncontested	476	82.9%
Other	4	0.7%
<b>Cases Processed</b>	<b>574</b>	<b>100.0%</b>
<b>Cases Pending 12/31/2012</b>	<b>937</b>	

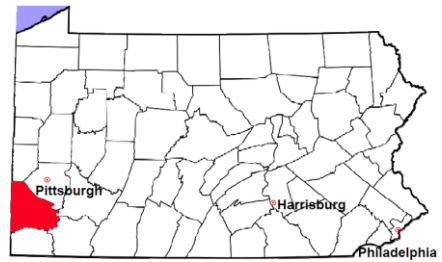
**Divorce New Cases Filed, 2003-2012**





# Washington County

2012 Population Estimate: 208,716  
 Class of County: 4th  
 No. of Common Pleas Court Judgeships: 6



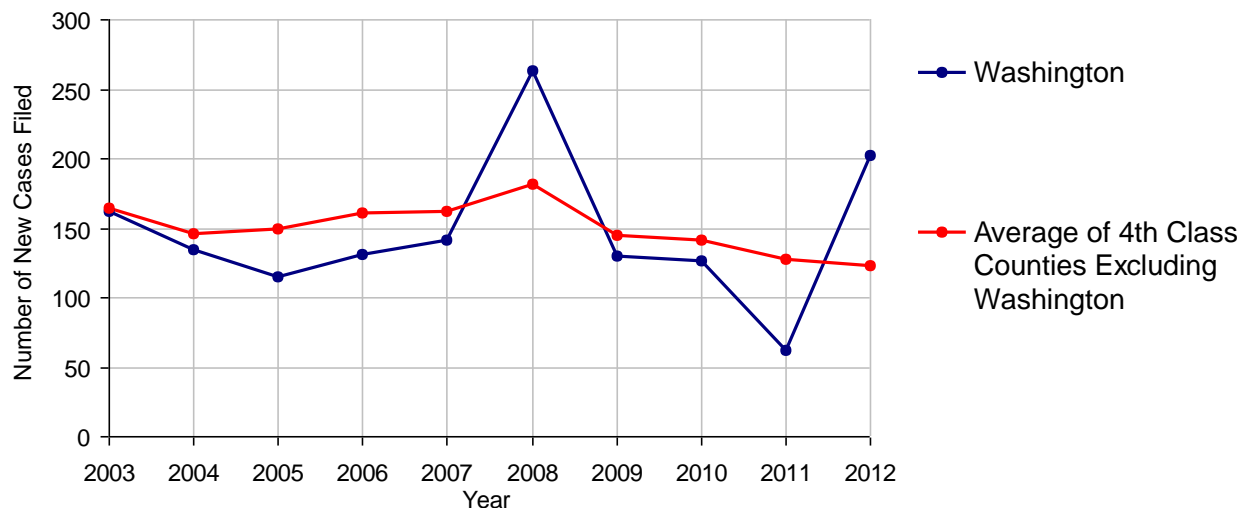
## 2012 Juvenile Dependency - Active Dependent Inventory



	Abuse/ Neglect	Status Offenses	Total
Cases Pending 1/1/2012	57	13	70
New Petitions Filed in 2012	197	5	202
Other	5	0	5
<b>Total Petitions Available for Processing</b>	<b>259</b>	<b>18</b>	<b>277</b>
Processed by:			
Adjudicated Dependent			
Judge	63	1	64
Master	40	1	41
Adjudicated NOT Dependent			
Judge	0	0	0
Master	0	0	0
Withdrawn/Dismissed/Inactive	0	0	0
Other	37	0	37
<b>Total Petitions Processed</b>	<b>140</b>	<b>2</b>	<b>142</b>
<b>Cases Pending 12/31/2012</b>	<b>119</b>	<b>16</b>	<b>135</b>

Data provided by CPCMS

Abuse/Neglect and Status Offenses New Cases Filed, 2003-2012



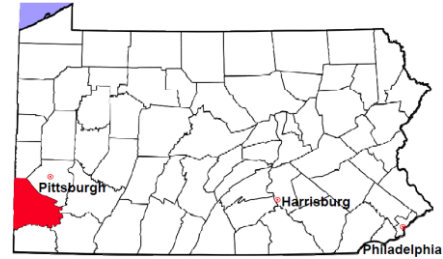
Note: (1) Dependency data for 2002-2010 were collected manually. Dependency data for 2011 and 2012 were provided by CPCMS. (2) A departmental review of cases resulted in a higher rate of case acceptance in 2008.

# Washington County

2012 Population Estimate: 208,716

Class of County: 4th

No. of Common Pleas Court Judgeships: 6



## 2012 Juvenile Dependency - Adjudicated Dependent Inventory



	Abuse/ Neglect	Status Offenses	Total
Cases Pending 1/1/2012	174	9	183
New Adjudicated Dependent Cases	103	2	105
Other	40	0	40
<b>Total Adjudicated Dependent Cases</b>	<b>317</b>	<b>11</b>	<b>328</b>
<b><u>Court Supervision Terminated:</u></b>			
Family Reunification	0	0	0
Adoption	10 21.7%	0	10 21.3%
Placement with a Relative/Guardian	7 15.2%	0	7 14.9%
Aged Out	6 13.0%	0	6 12.8%
Other Permanency Outcomes*	0	1 100.0%	1 2.1%
Other**	23 50.0%	0	23 48.9%
<b>Total Adjudicated Dependent Cases Terminated</b>	<b>46 100.0%</b>	<b>1 100.0%</b>	<b>47 100.0%</b>
<b>Cases Pending 12/31/2012</b>	<b>271</b>	<b>10</b>	<b>281</b>

Data provided by CPCMS

\* Other Permanency Outcomes include: adjudicated delinquent, death due to natural causes, death due to negligence, emancipation, permanent living arrangement, and parent has come forward.

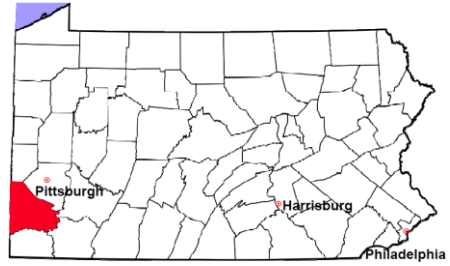
\*\* Other includes cases where court supervision is terminated due to transfer out of jurisdiction, withdrawal and administrative closure.

# Washington County

2012 Population Estimate: 208,716

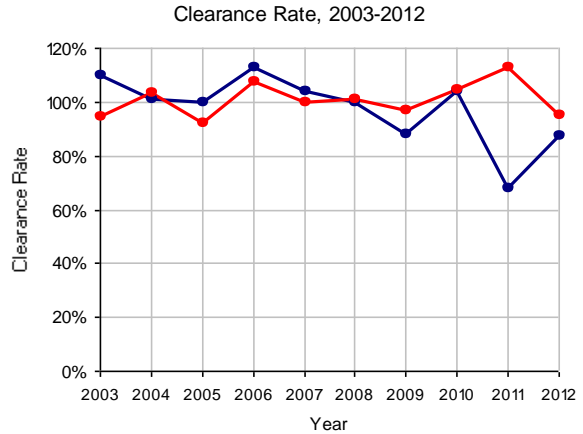
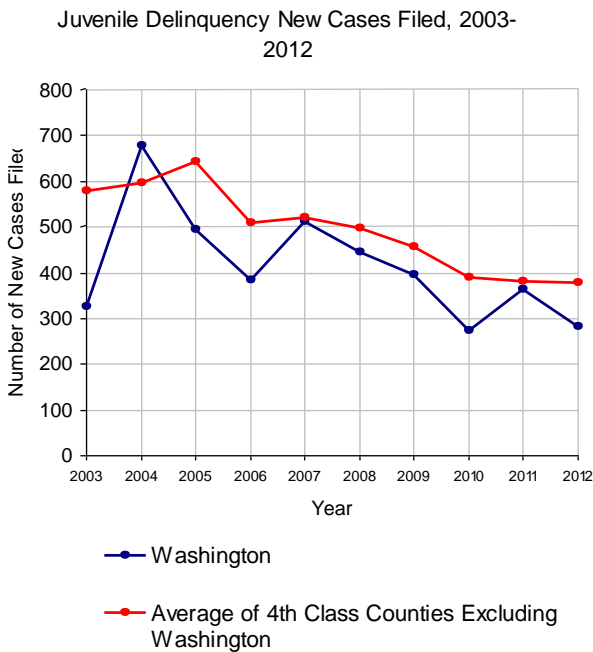
Class of County: 4th

No. of Common Pleas Court Judgeships: 6

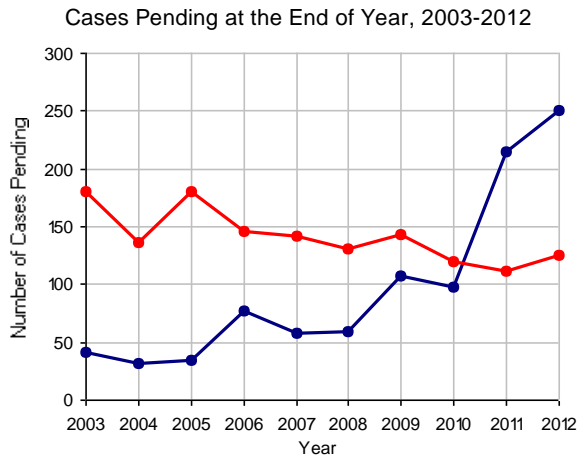


## 2012 Juvenile Delinquency

	No. of Cases
Cases Pending 1/1/2012	215
New Cases Filed in 2012	282
<b>Cases Available for Processing</b>	<b>497</b>
Processed By:	
Judge	68 27.6%
<b>Non-Judicial Officer</b>	<b>157 63.8%</b>
Other	21 8.5%
<b>Cases Processed</b>	<b>246 100.0%</b>
<b>Cases Pending 12/31/2012</b>	<b>251</b>

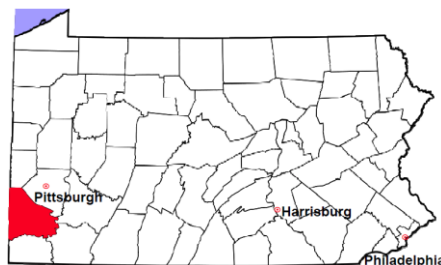


Note: Clearance Rate = Cases Processed / New Cases Filed



# Washington County

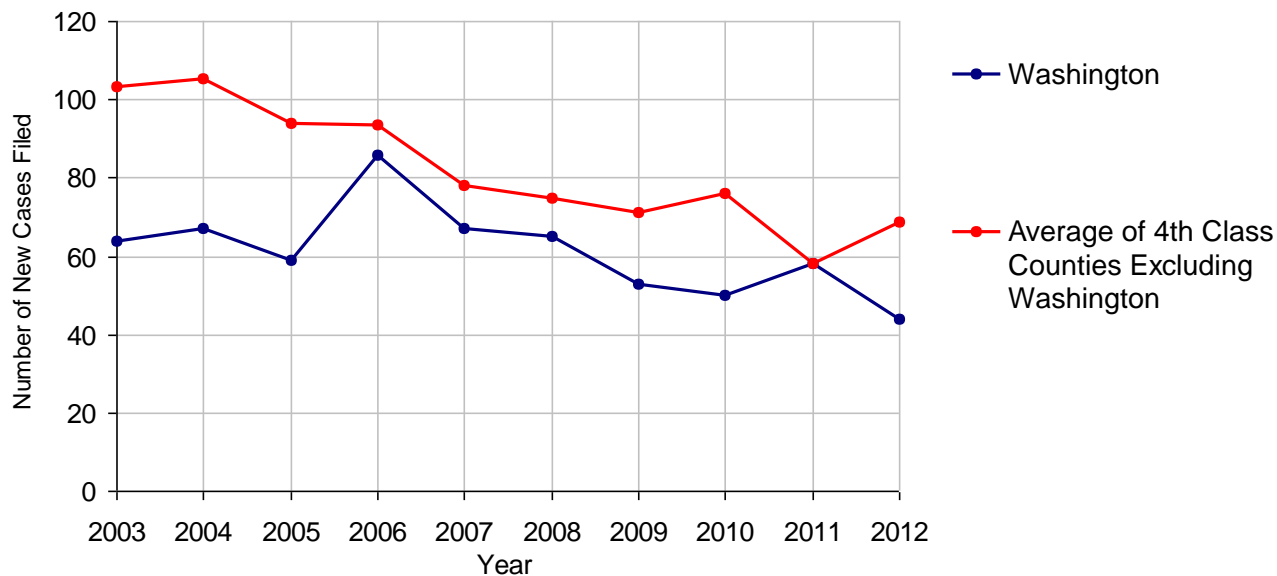
2012 Population Estimate: 208,716  
 Class of County: 4th  
 No. of Common Pleas Court Judgeships: 6



## 2012 Accounts

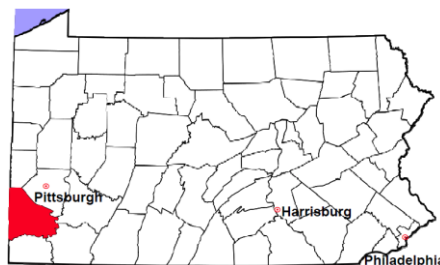
	No. of Cases	
Cases Pending 1/1/2012	66	
New Cases Filed in 2012	44	
<b>Cases Available for Processing</b>	<b>110</b>	
Processed By:		
Contested before a Judge	5	10.9%
Contested before a Non-judicial Officer	0	
Uncontested	33	71.7%
Other	8	17.4%
<b>Cases Processed</b>	<b>46</b>	<b>100.0%</b>
<b>Cases Pending 12/31/2012</b>	<b>64</b>	

Accounts New Cases Filed, 2003-2012



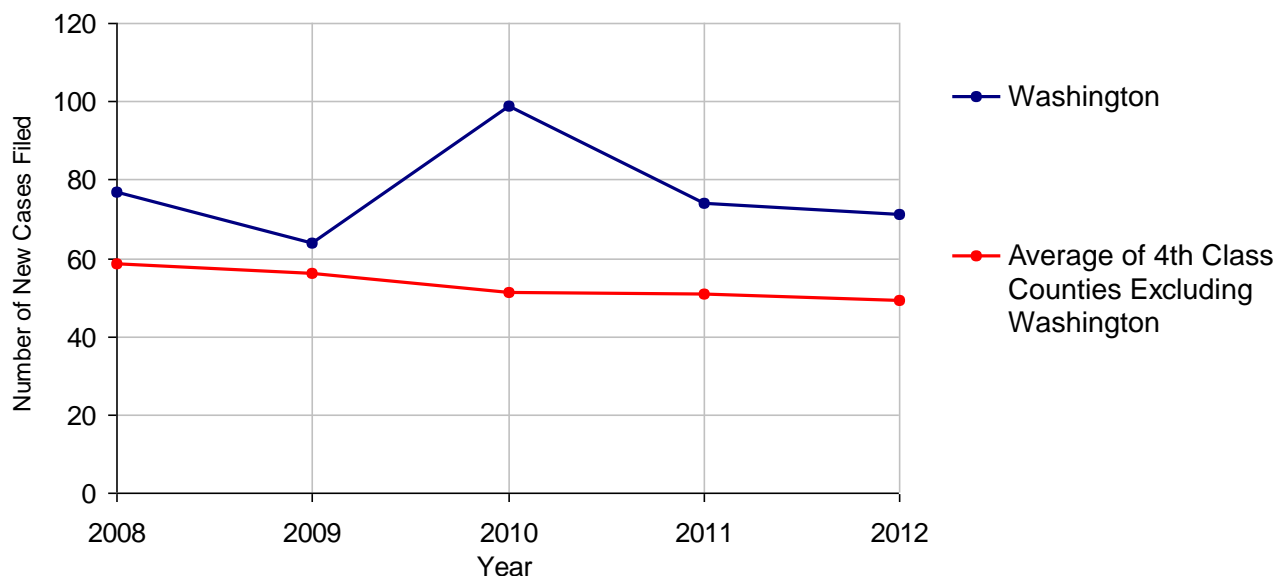
# Washington County

2012 Population Estimate: 208,716  
 Class of County: 4th  
 No. of Common Pleas Court Judgeships: 6



<b>2012 Adoptions</b>		<b>No. of Cases</b>	
Cases Pending 1/1/2012		6	
New Cases Filed in 2012		71	
<b>Cases Available for Processing</b>		<b>77</b>	
Processed By:			
Contested before a Judge	Granted	0	
	Denied	0	
Uncontested	Granted	72	97.3%
	Denied	2	2.7%
Other		0	
<b>Cases Processed</b>		<b>74</b>	<b>100.0%</b>
<b>Cases Pending 12/31/2012</b>		<b>3</b>	

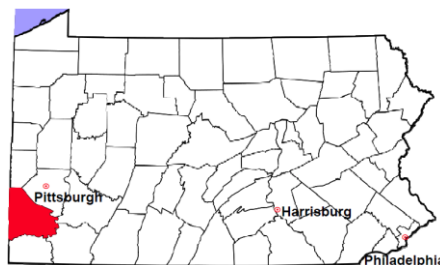
**Adoptions New Cases Filed, 2008-2012**



Note: Prior to 2008, each petition was counted as one new case, regardless of the number of children listed on the petition. Starting in 2008, each child listed on a petition is counted as a separate case. Therefore, statistics since 2008 should not be compared to statistics prior to 2008.

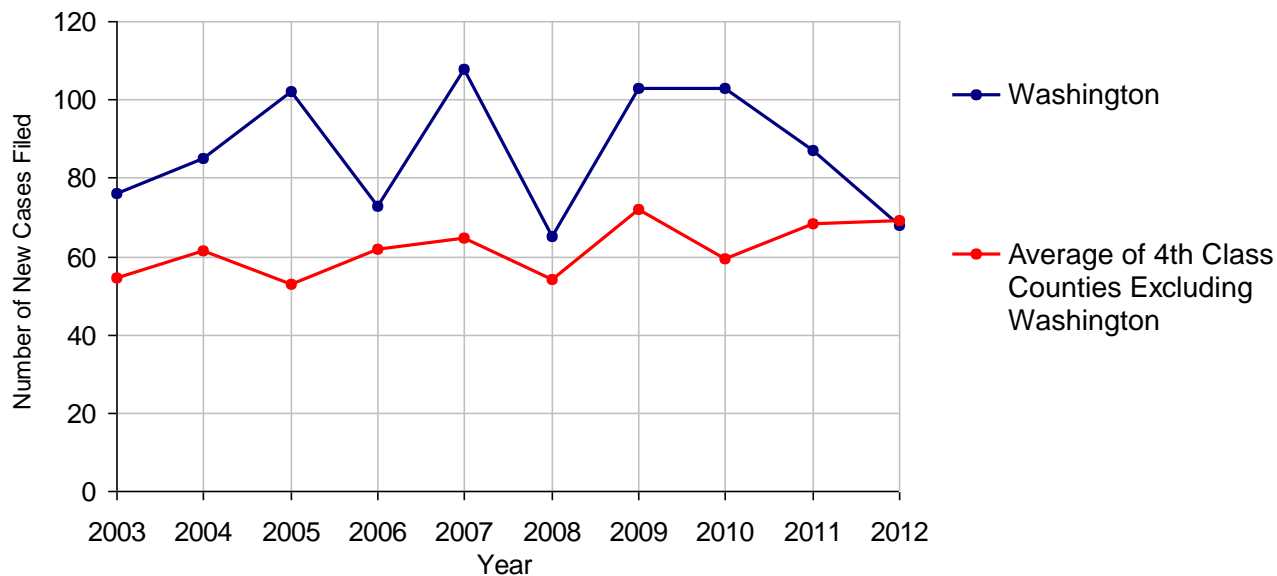
# Washington County

2012 Population Estimate: 208,716  
 Class of County: 4th  
 No. of Common Pleas Court Judgeships: 6



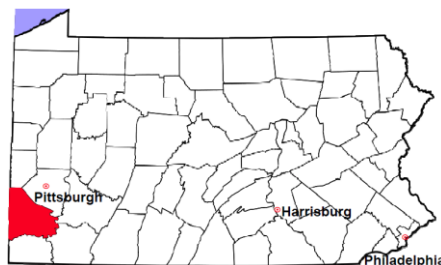
2012 Relinquishments/Terminations	No. of Cases
Cases Pending 1/1/2012	36
New Cases Filed in 2012	68
<b>Cases Available for Processing</b>	<b>104</b>
Processed By:	
Contested before a Judge	5      7.0%
Uncontested	57     80.3%
Other	9      12.7%
<b>Cases Processed</b>	<b>71    100.0%</b>
<b>Cases Pending 12/31/2012</b>	<b>33</b>

Relinquishments/Terminations New Cases Filed, 2003-2012



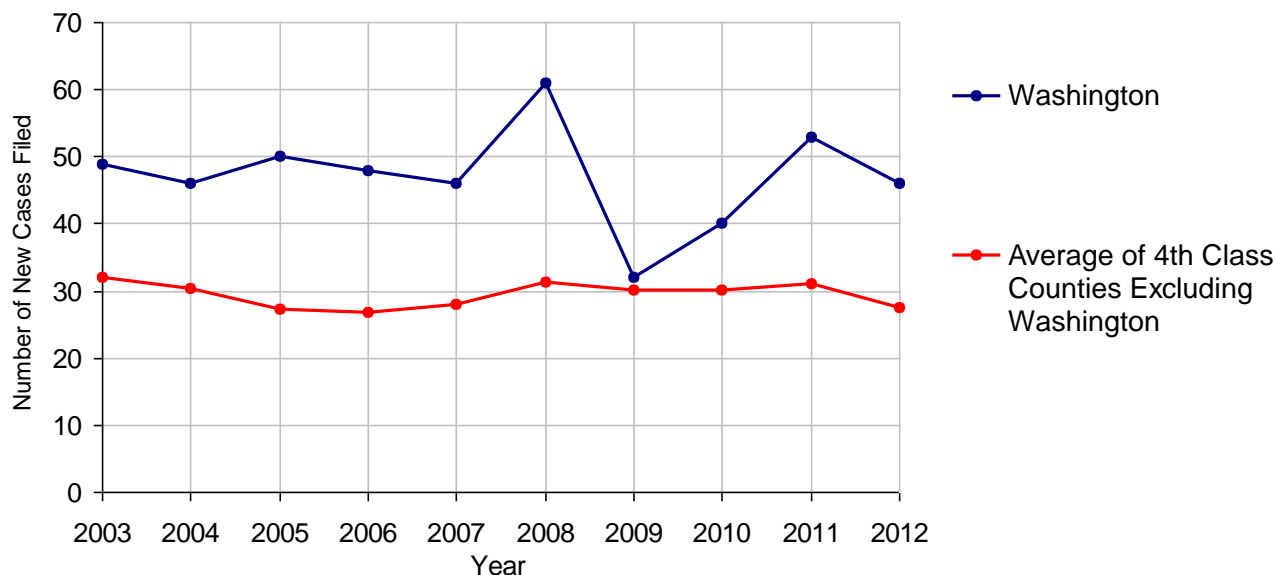
# Washington County

2012 Population Estimate: 208,716  
 Class of County: 4th  
 No. of Common Pleas Court Judgeships: 6



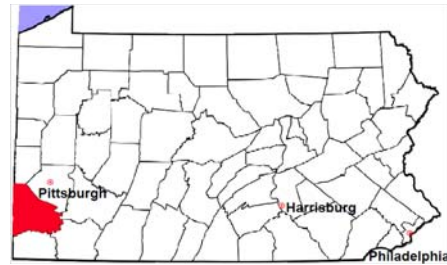
<b>2012 Appointment of Guardians</b>	<b>No. of Cases</b>
Cases Pending 1/1/2012	13
New Cases Filed in 2012	46
<b>Cases Available for Processing</b>	<b>59</b>
Processed By:	
Contested before a Judge	3    6.0%
Uncontested	39    78.0%
Other	8    16.0%
<b>Cases Processed</b>	<b>50    100.0%</b>
<b>Cases Pending 12/31/2012</b>	<b>9</b>

**Appointment of Guardians New Cases Filed, 2003-2012**



# Washington County

2012 Population Estimate: 208,716  
 Class of County: 4th  
 No. of Common Pleas Court Judgeships: 6



## 2012 Jury Yield and Utilization

### Jury Yield

Qualification Questionnaires/Summonses Mailed:	7,000	A		
Returned Undeliverable:	952	B	13.6%	Of Qualification Questionnaires/Summonses Mailed
Not Responded to:	348	C	5.0%	
the Number of Prospective Jurors:				
Disqualified:	670	D	9.6%	
Exempted:	855	E	12.2%	
Excused:	1,086	F	15.5%	
Deferred to New Term:	619	G	8.8%	
Deferred from Previous Term:	439	H	6.3%	
<b>Total Number of Qualified Jurors Available for Service:</b>	<b>2,909</b>	<b>I</b>	<b>41.6%</b>	

*I=A-B-C-D-E-F-G+H*

### Jury Utilization

the Number of Jurors:			
Reporting for Service:	1,176		40.4%
Told Not to Report for Service:	1,294		44.5%
Sent to Courtroom for Jury Selection (Voir Dire):	913		77.6%
Impanelled or Sworn (jurors/alternates):	330		28.1%
Removed for Cause/Hardship:	173		
Removed by Peremptory Challenge:	282		

### Jury Costs

Total Annual Budget for Juror Operations:	\$204,874.00	J
Average Cost Per Juror:	\$29.27	K

*K=J/A*

In mid-2011, AOPC began utilizing the National Center for State Courts' Jury Managers' Toolbox for collecting jury data. In 2012, the counties began providing additional jury data which included information about the summoning practices in the counties. With this additional data, we can now see not only how many citizens come to our courthouses every day in anticipation of serving on a jury, but the number of citizens actually summonsed and the number of those summonsed who are exempt, excused or disqualified from service. With this wider view of the jury process, we can determine the efficiency with which our courts operate, and with the assistance of the Jury Managers' Toolbox find guidance in streamlining the jury summonsing practices.