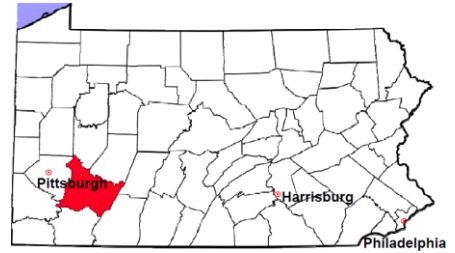


Westmoreland County

2012 Population Estimate: 363,395
 Class of County: 3rd
 No. of Common Pleas Court Judgeships: 11



2012 Criminal	No. of Cases
----------------------	---------------------

Cases Pending 1/1/2012	2,247
New Cases Filed in 2012	5,051
Reopened Cases	231
Cases Available for Disposition	7,529

Disposed by:		
Withdrawn/Dismissed	420	7.9%
ARD	1,056	20.0%
Guilty Plea	3,562	67.4%
Non-Jury Trial	26	0.5%
Jury Trial	30	0.6%
Inactive	134	2.5%
Other	56	1.1%
Total Cases Disposed	5,284	100.0%

Cases Pending 12/31/2012	2,245
Cases Awaiting Sentencing	44

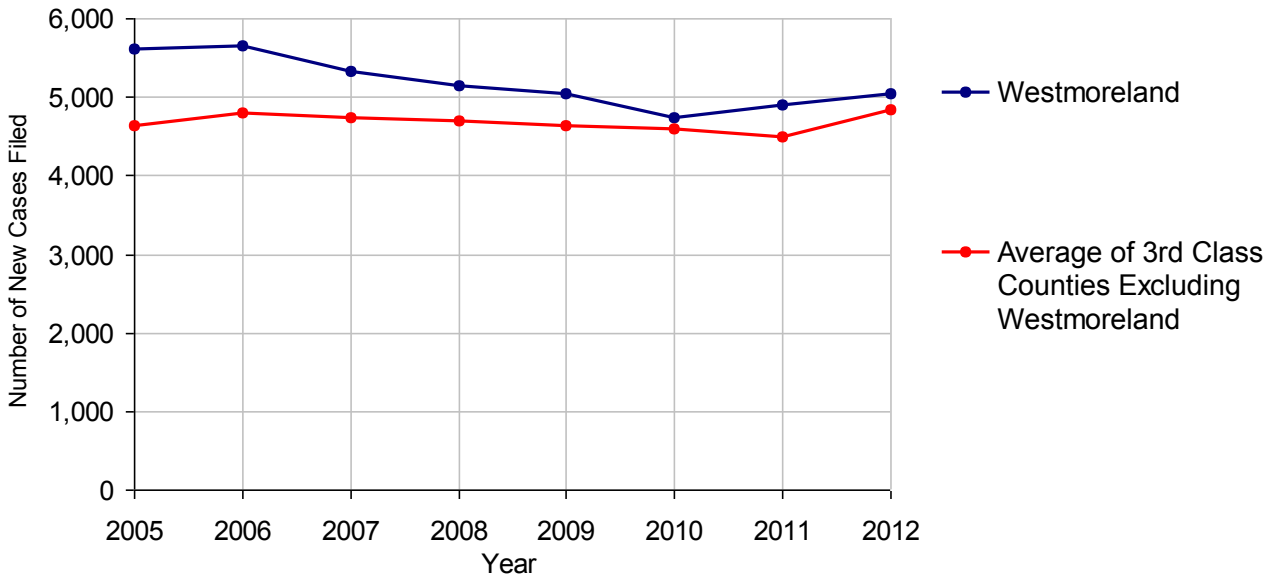
Data provided by CPCMS



Age of Pending Cases as of 12/31/2012		
--	--	--

0-60 Days	767	34.2%
61-120 Days	409	18.2%
121-180 Days	322	14.3%
181-240 Days	215	9.6%
241-300 Days	139	6.2%
301-360 Days	89	4.0%
Over 360 Days	304	13.5%
Total	2,245	100.0%

Criminal New Cases Filed, 2005-2012

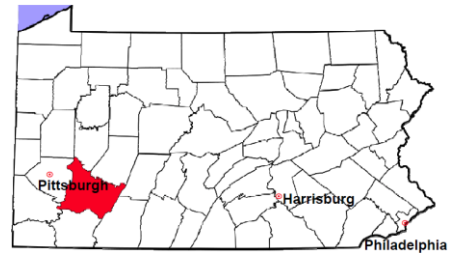


Westmoreland County

2012 Population Estimate: 363,395

Class of County: 3rd

No. of Common Pleas Court Judgeships: 11



2012 Criminal - New Cases by Case Type



Case Type	Felony	Misdemeanor	Summary /Ungraded	Total
Person	314	472	2	788
Property	823	937	7	1,767
Drug	309	578	0	887
Weapon	54	23	0	77
Public Order	109	268	1	378
Motor Vehicle - DWI/DUI	0	1,128	0	1,128
Motor Vehicle - Other	1	24	0	25
Other	0	1	0	1
Total	1,610	3,431	10	5,051
	31.9%	67.9%	0.2%	100.0%

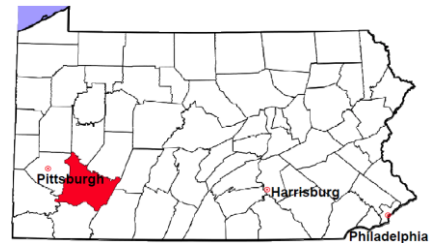
Data provided by CPCMS

Westmoreland County

2012 Population Estimate: 363,395

Class of County: 3rd

No. of Common Pleas Court Judgeships: 11



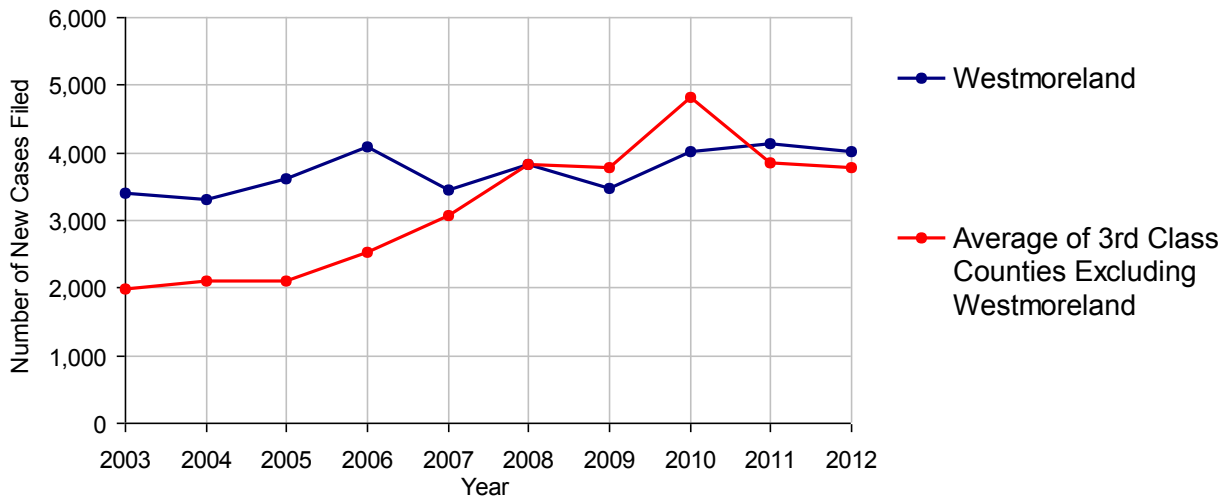
2012 Civil	Civil Action	Other	Total
Cases Pending 1/1/2012	3,375	18,144	21,519 (R)
Docketed Cases	2,004	2,017	4,021
Arbitration Appeals	19	22	41
Transferred In	1	0	1
Returned to Active	10	5	15
Cases Available for Processing	5,409	20,188	25,597
Disposed By:			
Default Judgments	505	106	611
Cases Decided by Arbitration Board	40	51	91
Dispositive Motions	60	35	95
Settlements	396	428	824
Moved to Inactive Status	49	17	66
Transferred/Withdrawn	63	34	97
Administrative Purge	0	0	0
Other	1	2	3
Jury Trial	59	54	113
Non-Jury Trial	7	10	17
Total Cases Disposed	1,180	737	1,917
Cases Pending 12/31/2012	4,229	19,451	23,680

Age of Pending Cases as of 12/31/2012 (Civil Action Only)

0-6 months	694	16.4%
7-12 months	760	18.0%
13-18 months	752	17.8%
19-24 months	786	18.6%
25-30 months	942	22.3%
31-36 months	25	0.6%
37-42 months	9	0.2%
43-48 months	16	0.4%
49-54 months	6	0.1%
55-60 months	10	0.2%
61-66 months	15	0.4%
67-72 months	16	0.4%
Over 72 months	198	4.7%
Total	4,229	100.0%

(R) - Revised

Docketed Cases, 2003-2012



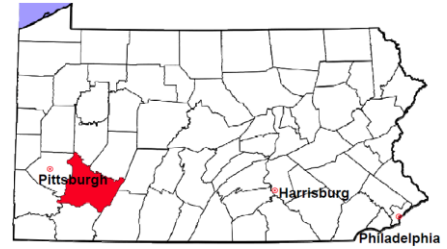
Note: Prior to June 2010, docketed cases under the "Other" category were not reported. The inclusion of these cases starting from June 2010 may contribute to an increase in docketed cases from 2009 to 2010.

Westmoreland County

2012 Population Estimate: 363,395

Class of County: 3rd

No. of Common Pleas Court Judgeships: 11



2012 Civil - Docketed Cases Listed by Case Type

TORT	526	13.1%	REAL PROPERTY	1,337	33.3%
<i>(does not include mass tort)</i>			Ejectment*	63	
Intentional	11		Eminent Domain/Condemnation	86	
Malicious Prosecution	0		Ground Rent	0	
Motor Vehicle	297		Landlord/Tenant Dispute	19	
Nuisance	1		Mortgage Foreclosure:		
Premise Liability	117		Residential*	761	
Product Liability	12		Commercial*	6	
Slander/Libel/Defamation	1		Partition of Real Property*	5	
Other	87		Quiet Title*	37	
MASS TORT	14	0.3%	Other*	360	
Asbestos	12		CIVIL APPEALS	470	11.7%
Tobacco	0		<i>- Administrative Agencies</i>		
Toxic Tort - DES	0		Board of Assessment*	23	
Toxic Tort - Implant	0		Board of Elections*	0	
Toxic Waste	0		Dept. of Transportation*	177	
Other	2		Zoning Board*	4	
PROFESSIONAL LIABILITY	73	1.8%	Statutory Appeal - Other*	221	
Dental	3		Other*	45	
Legal	7		MISCELLANEOUS	229	5.7%
Medical Malpractice	52		Common Law/		
Other	11		Statutory Arbitration*	5	
CONTRACT	1,372	34.1%	Declaratory Judgment*	20	
<i>(does not include judgments)</i>			Mandamus*	16	
Buyer Plaintiff	30		Non-Domestic Relations		
Debt Collection: Credit Card	715		Restraining Order*	3	
Debt Collection: Other	440		Quo Warranto*	0	
Employment Dispute:			Replevin*	16	
Employment Dispute: Discriminatio	12		Other*	169	
Employment Dispute: Other	0		TOTAL DOCKETED CASES:	4,021	100%
Other	175				

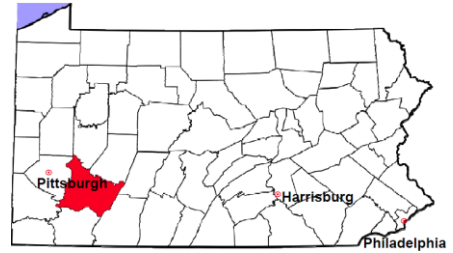
Of the Docketed Cases:

Pro Se Filings: 229 5.7% Class Action Suits: 0 MDJ Appeals: 359 8.9%

* Civil Other

Westmoreland County

2012 Population Estimate: 363,395
 Class of County: 3rd
 No. of Common Pleas Court Judgeships: 11



2012 Protection From Abuse

**No. of
Petitions**

Cases Pending 1/1/2012	40
New Cases Filed in 2012	976
<i>Of these, Petitions Requesting Temporary Orders: 976 (100.0%)</i>	
<i>Temporary Orders DENIED: 24 (2.5%), Temporary Orders GRANTED: 952 (97.5%)</i>	

Cases Available for Processing 1,016

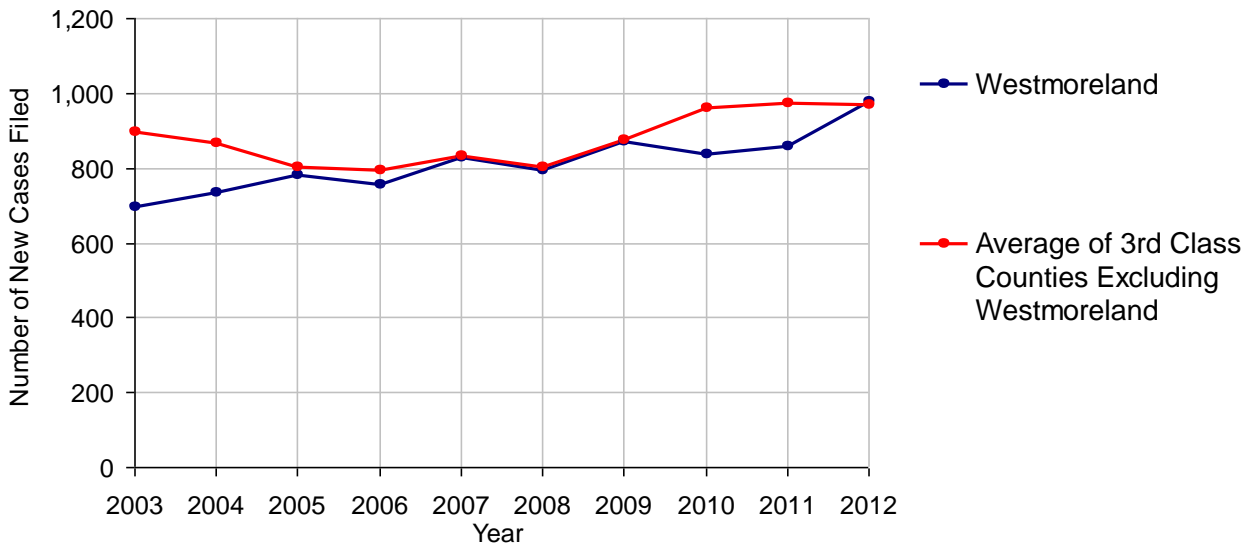
Processed By:

Temporary Order DENIED After Ex Parte Hearing and No Evidentiary Hearing Scheduled	12	1.2%
Temporary Order DISMISSED After Evidentiary Hearing and No Final Order Entered	248	24.5%
Final Order DENIED After Evidentiary Hearing Before a Judge	42	4.2%
Final Order GRANTED After Evidentiary Hearing Before a Judge	177	17.5%
Plaintiff Did Not Appear For Evidentiary Hearing	103	10.2%
Final Order by STIPULATION OR AGREEMENT Between the Parties	179	17.7%
Petition WITHDRAWN by Plaintiff	242	23.9%
TRANSFERRED to Another Jurisdiction	0	
DECEASED Party	0	
Other	8	0.8%

Cases Processed 1,011 100.0%

Cases Pending 12/31/2012 5

PFA New Cases Filed, 2003-2012

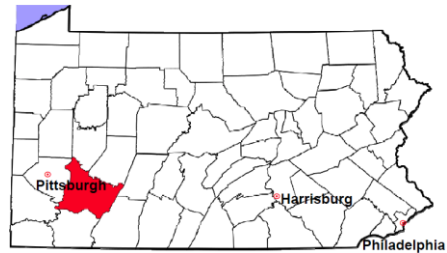


Westmoreland County

2012 Population Estimate: 363,395

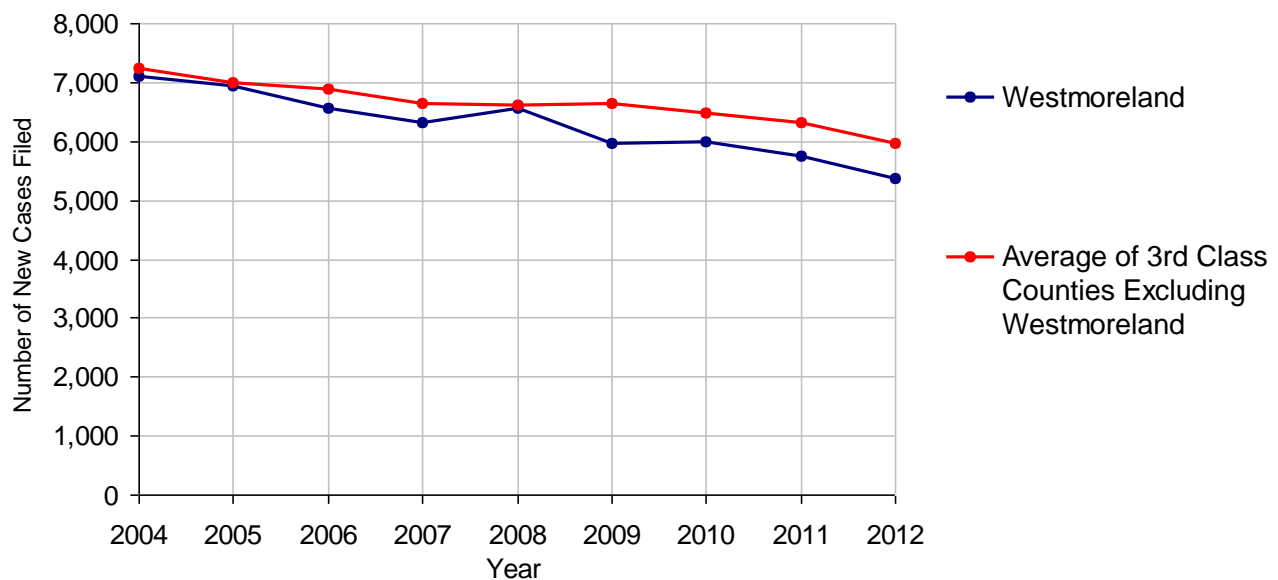
Class of County: 3rd

No. of Common Pleas Court Judgeships: 11



2012 Spousal & Child Support	No. of Petitions	
Cases Pending 1/1/2012	1,082	
New Cases Filed in 2012	5,367	
Dockets Transferred In (+)	73	
Dockets Transferred Out (-)	50	
Cases Available for Processing	6,472	
Processed By:		
Judge	38	0.7%
Intake Officer	5,183	95.6%
Hearing Officer	199	3.7%
Other	1	<0.1%
Cases Processed	5,421	100.0%
Cases Pending 12/31/2012	1,051	

Spousal & Child Support New Cases Filed, 2004-2012

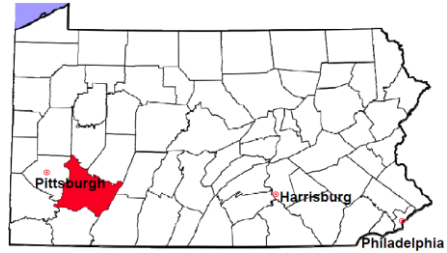


Westmoreland County

2012 Population Estimate: 363,395

Class of County: 3rd

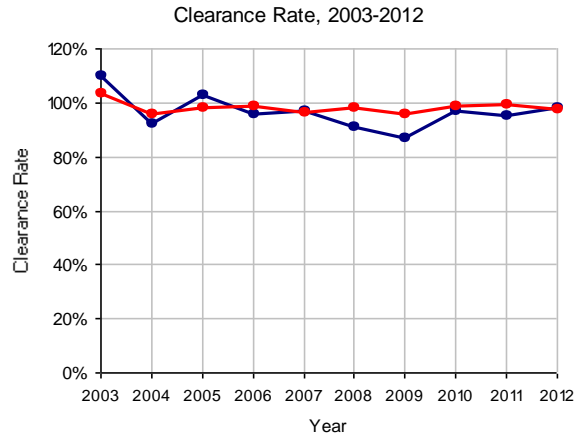
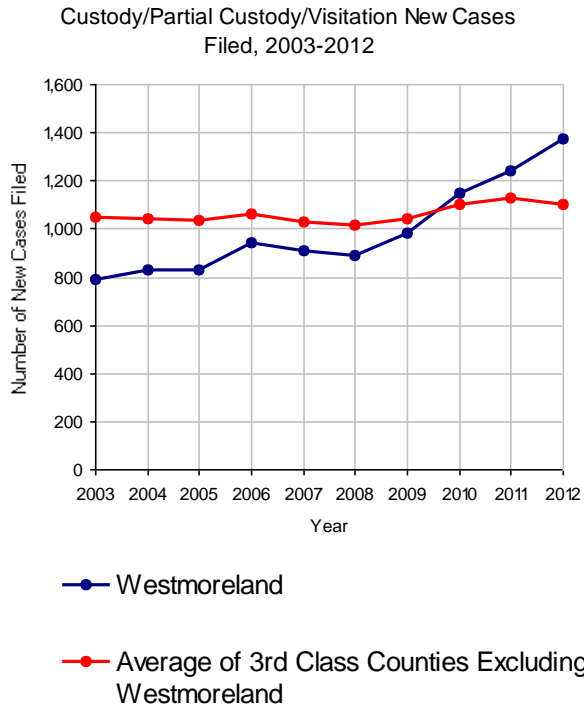
No. of Common Pleas Court Judgeships: 11



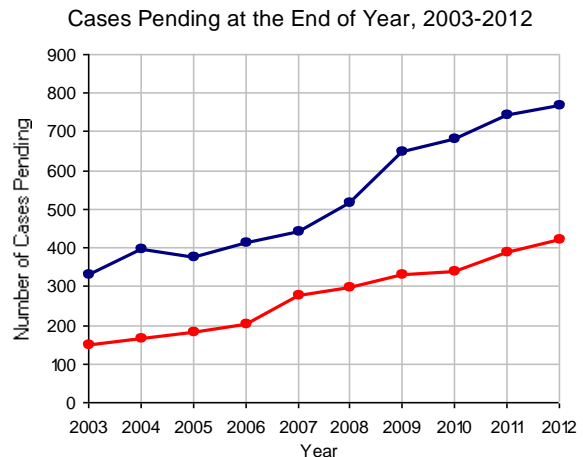
2012 Custody/Partial Custody/Visitation

No. of
Petitions

Cases Pending 1/1/2012	745
New Cases Filed in 2012	1,371
Cases Available for Processing	2,116
Processed By:	
Judge	356 26.4%
Non-Judicial Officer	666 49.4%
Other	327 24.2%
Cases Processed	1,349 100.0%
Cases Pending 12/31/2012	767



Note: Clearance Rate = Cases Processed / New Cases Filed

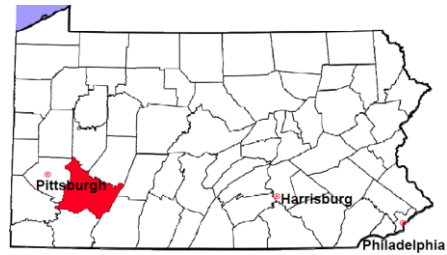


Westmoreland County

2012 Population Estimate: 363,395

Class of County: 3rd

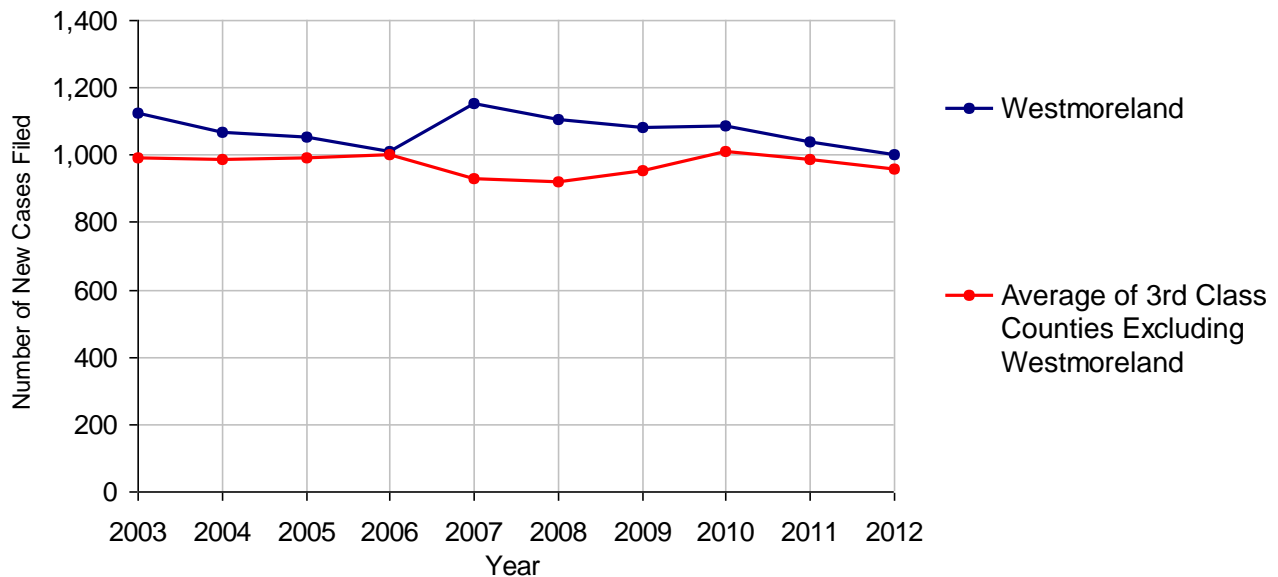
No. of Common Pleas Court Judgeships: 11



2012 Divorce

	No. of Petitions	
Cases Pending 1/1/2012	2,644	
New Cases Filed in 2012	1,002	
Cases Available for Processing	3,646	
Processed By:		
Contested Before a Judge	13	1.4%
Contested Before a Master	106	11.2%
Uncontested	794	83.9%
Other	33	3.5%
Cases Processed	946	100.0%
Cases Pending 12/31/2012	2,700	

Divorce New Cases Filed, 2003-2012

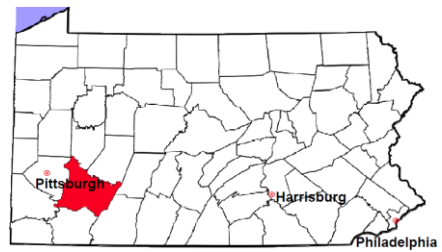


Westmoreland County

2012 Population Estimate: 363,395

Class of County: 3rd

No. of Common Pleas Court Judgeships: 11



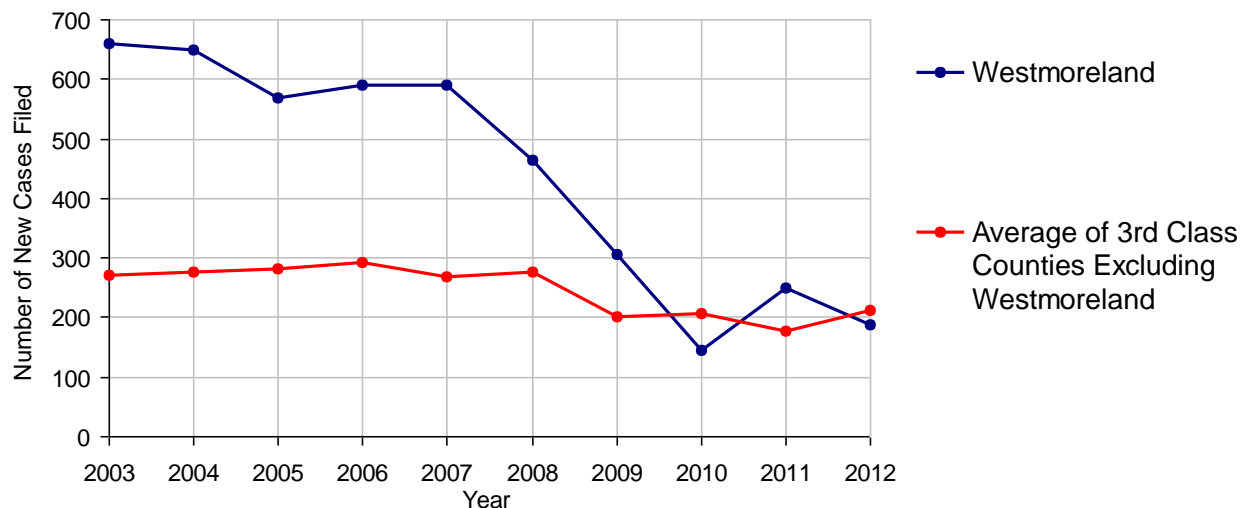
2012 Juvenile Dependency - Active Dependent Inventory



	Abuse/ Neglect	Status Offenses	Total
Cases Pending 1/1/2012	32	9	41
New Petitions Filed in 2012	150	38	188
Other	0	0	0
Total Petitions Available for Processing	182	47	229
Processed by:			
Adjudicated Dependent			
Judge	15	0	15
Master	108	27	135
Adjudicated NOT Dependent			
Judge	0	0	0
Master	6	0	6
Withdrawn/Dismissed/Inactive	39	13	52
Other	2	0	2
Total Petitions Processed	170	40	210
Cases Pending 12/31/2012	12	7	19

Data provided by CPCMS

Abuse/Neglect and Status Offenses New Cases Filed, 2003-2012



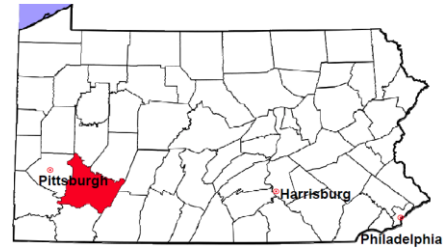
Note: Dependency data for 2002-2010 were collected manually. Dependency data for 2011 and 2012 were provided by CPCMS.

Westmoreland County

2012 Population Estimate: 363,395

Class of County: 3rd

No. of Common Pleas Court Judgeships: 11



2012 Juvenile Dependency - Adjudicated Dependent Inventory



	Abuse/ Neglect		Status Offenses		Total	
Cases Pending 1/1/2012	218		35		253	
New Adjudicated Dependent Cases	123		27		150	
Other	0		0		0	
Total Adjudicated Dependent Cases	341		62		403	
<u>Court Supervision Terminated:</u>						
Family Reunification	34	26.6%	19	52.8%	53	32.3%
Adoption	44	34.4%	0		44	26.8%
Placement with a Relative/Guardian	29	22.7%	8	22.2%	37	22.6%
Aged Out	17	13.3%	8	22.2%	25	15.2%
Other Permanency Outcomes*	4	3.1%	1	2.8%	5	3.0%
Other**	0		0		0	
Total Adjudicated Dependent Cases Terminated	128	100.0%	36	100.0%	164	100.0%
Cases Pending 12/31/2012	213		26		239	

Data provided by CPCMS

* Other Permanency Outcomes include: adjudicated delinquent, death due to natural causes, death due to negligence, emancipation, permanent living arrangement, and parent has come forward.

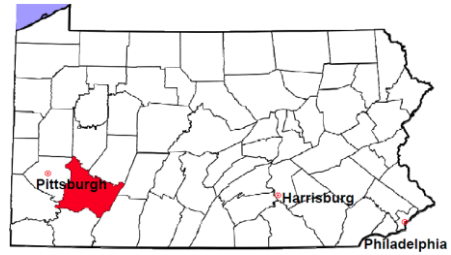
** Other includes cases where court supervision is terminated due to transfer out of jurisdiction, withdrawal and administrative closure.

Westmoreland County

2012 Population Estimate: 363,395

Class of County: 3rd

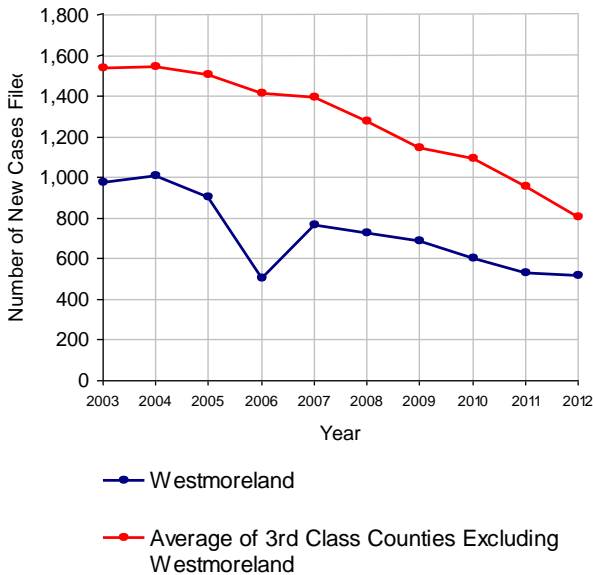
No. of Common Pleas Court Judgeships: 11



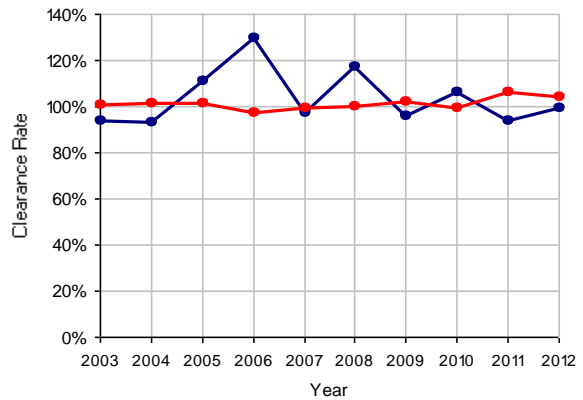
2012 Juvenile Delinquency

	No. of Cases
Cases Pending 1/1/2012	125
New Cases Filed in 2012	514
Cases Available for Processing	639
Processed By:	
Judge	164 32.0%
Non-Judicial Officer	279 54.5%
Other	69 13.5%
Cases Processed	512 100.0%
Cases Pending 12/31/2012	127

Juvenile Delinquency New Cases Filed, 2003-2012

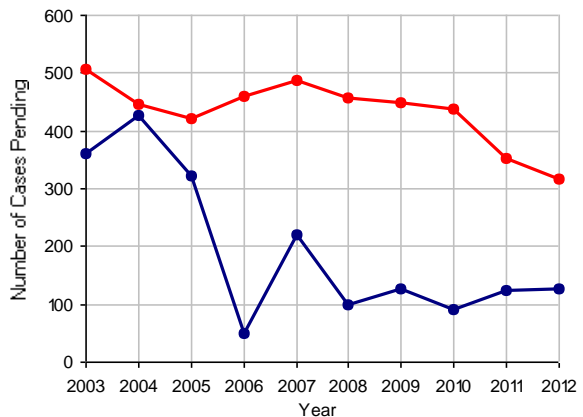


Clearance Rate, 2003-2012



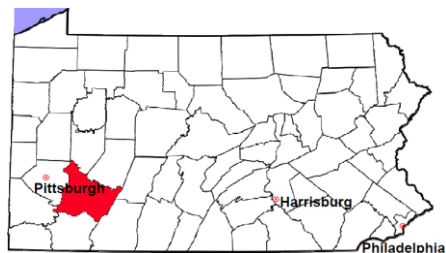
Note: Clearance Rate = Cases Processed / New Cases Filed

Cases Pending at the End of Year, 2003-2012



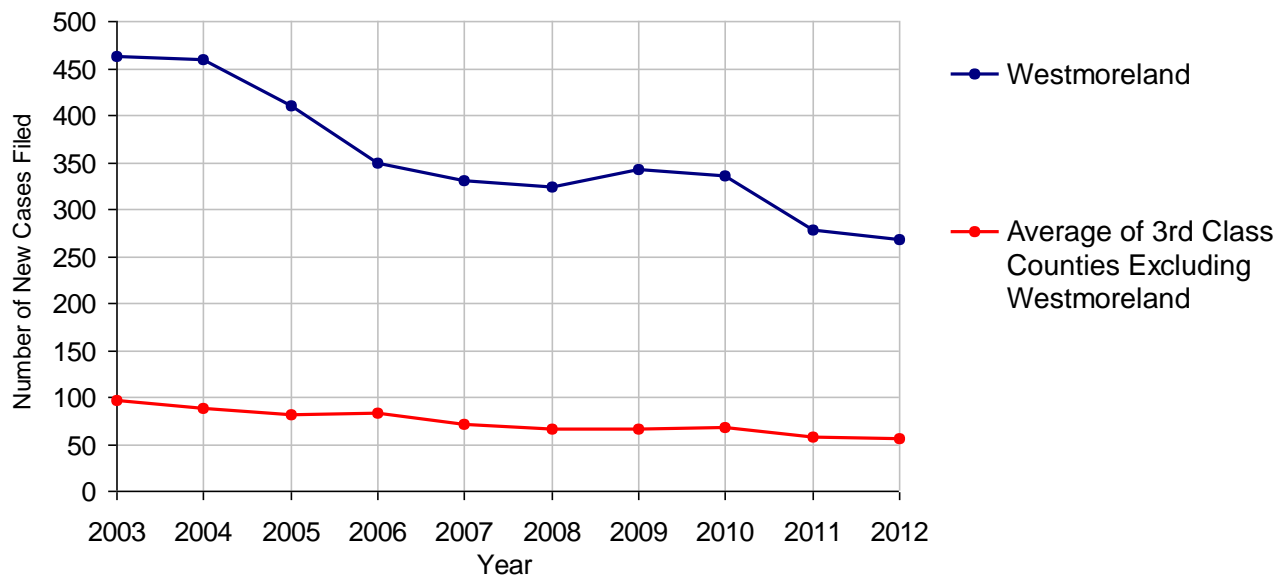
Westmoreland County

2012 Population Estimate: 363,395
 Class of County: 3rd
 No. of Common Pleas Court Judgeships: 11



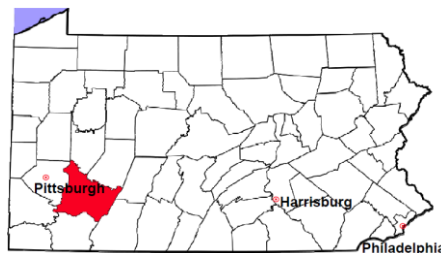
2012 Accounts	No. of Cases	
Cases Pending 1/1/2012	114	
New Cases Filed in 2012	267	
Cases Available for Processing	381	
Processed By:		
Contested before a Judge	4	1.5%
Contested before a Non-judicial Officer	0	
Uncontested	265	97.8%
Other	2	0.7%
Cases Processed	271	100.0%
Cases Pending 12/31/2012	110	

Accounts New Cases Filed, 2003-2012



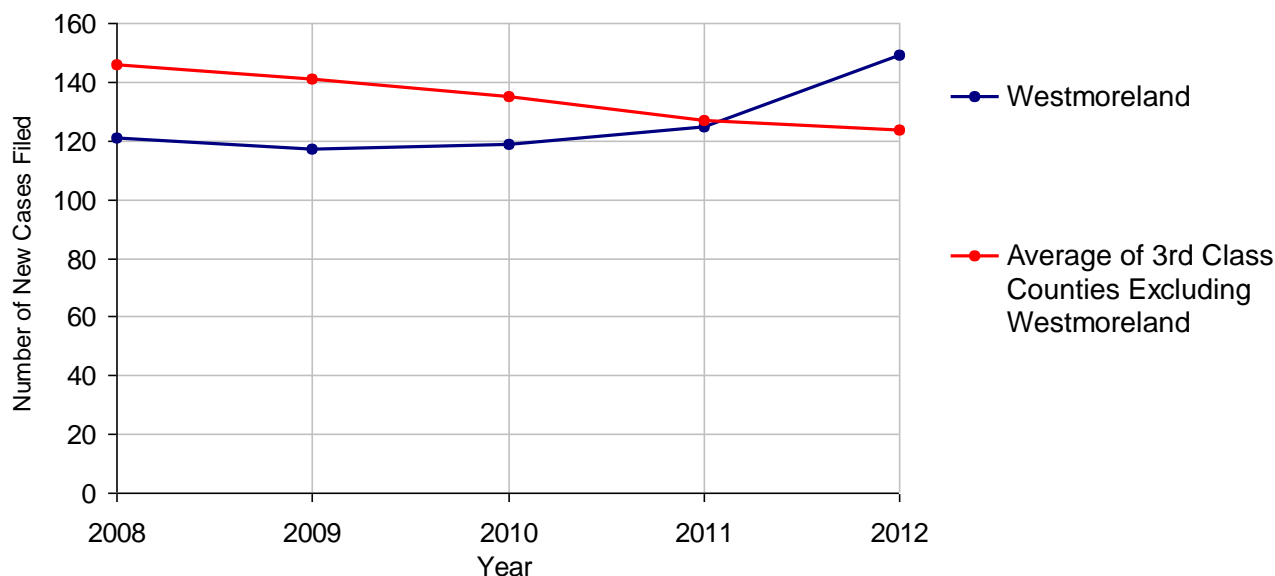
Westmoreland County

2012 Population Estimate: 363,395
 Class of County: 3rd
 No. of Common Pleas Court Judgeships: 11



2012 Adoptions		No. of Cases	
Cases Pending 1/1/2012		6	
New Cases Filed in 2012		149	
Cases Available for Processing		155	
Processed By:			
Contested before a Judge	Granted	0	
	Denied	0	
Uncontested	Granted	138	98.6%
	Denied	0	
Other		2	1.4%
Cases Processed		140	100.0%
Cases Pending 12/31/2012		15	

Adoptions New Cases Filed, 2008-2012



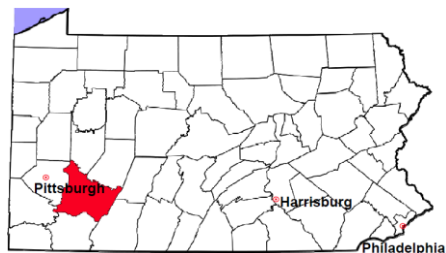
Note: Prior to 2008, each petition was counted as one new case, regardless of the number of children listed on the petition. Starting in 2008, each child listed on a petition is counted as a separate case. Therefore, statistics since 2008 should not be compared to statistics prior to 2008.

Westmoreland County

2012 Population Estimate: 363,395

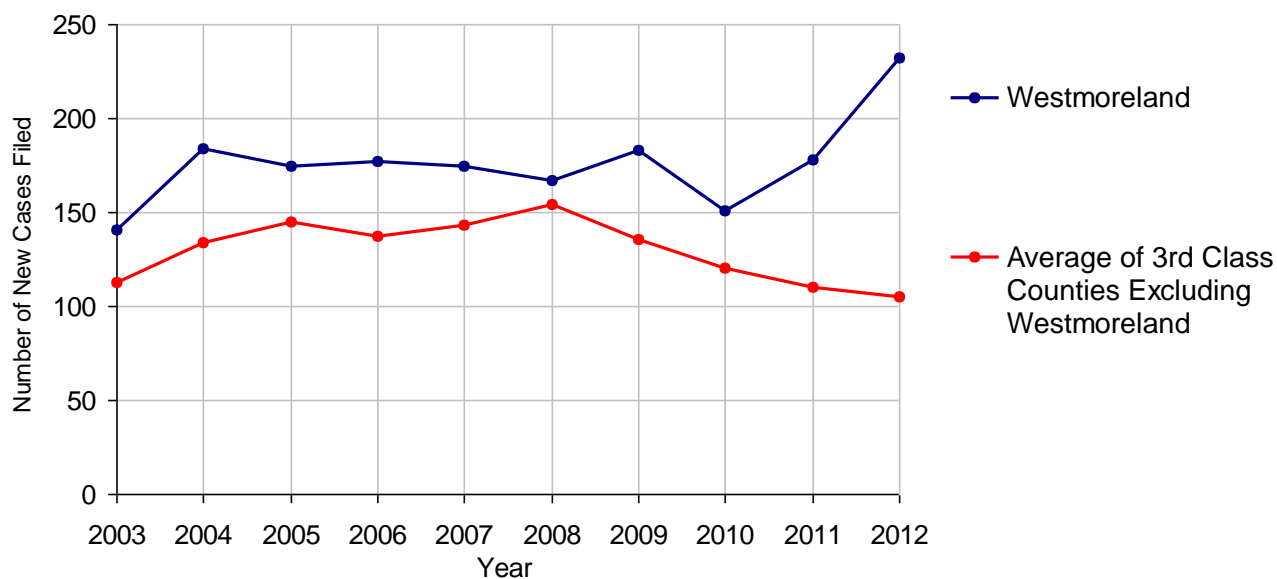
Class of County: 3rd

No. of Common Pleas Court Judgeships: 11



2012 Relinquishments/Terminations	No. of Cases	
Cases Pending 1/1/2012	49	
New Cases Filed in 2012	232	
Cases Available for Processing	281	
Processed By:		
Contested before a Judge	60	26.5%
Uncontested	162	71.7%
Other	4	1.8%
Cases Processed	226	100.0%
Cases Pending 12/31/2012	55	

Relinquishments/Terminations New Cases Filed, 2003-2012

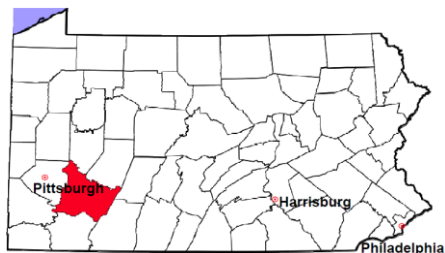


Westmoreland County

2012 Population Estimate: 363,395

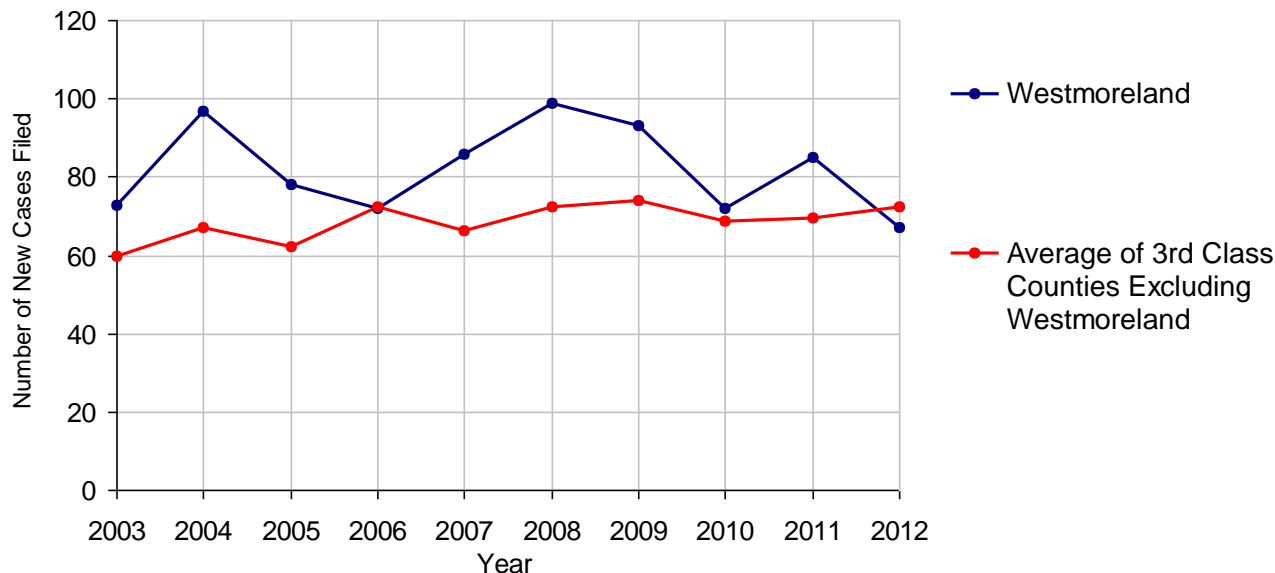
Class of County: 3rd

No. of Common Pleas Court Judgeships: 11



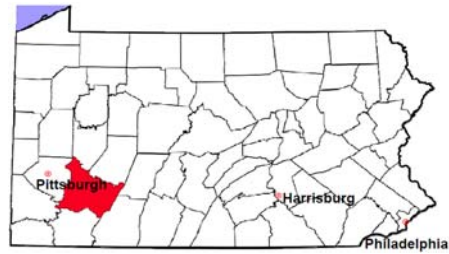
2012 Appointment of Guardians	No. of Cases	
Cases Pending 1/1/2012	83	
New Cases Filed in 2012	67	
Cases Available for Processing	150	
Processed By:		
Contested before a Judge	0	
Uncontested	53	81.5%
Other	12	18.5%
Cases Processed	65	100.0%
Cases Pending 12/31/2012	85	

Appointment of Guardians New Cases Filed, 2003-2012



Westmoreland County

2012 Population Estimate: 363,395
 Class of County: 3rd
 No. of Common Pleas Court Judgeships: 11



2012 Jury Yield and Utilization

Jury Yield

Qualification Questionnaires/Summonses Mailed:	23,801	A		
Returned Undeliverable:	1,947	B	8.2%	Of Qualification Questionnaires/Summonses Mailed
Not Responded to:	318	C	1.3%	
the Number of Prospective Jurors:				
Disqualified:	5,372	D	22.6%	
Exempted:	149	E	0.6%	
Excused:	2,579	F	10.8%	
Deferred to New Term:	2,578	G	10.8%	
Deferred from Previous Term:	2,859	H	12.0%	
Total Number of Qualified Jurors Available for Service:	13,717	I	57.6%	

I=A-B-C-D-E-F-G+H

Jury Utilization

the Number of Jurors:				
Reporting for Service:	4,738		34.5%	Of Jurors Qualified and Available
Told Not to Report for Service:	8,514		62.1%	
Sent to Courtroom for Jury Selection (Voir Dire):	2,622		55.3%	Of Jurors Reporting for Service
Impanelled or Sworn (jurors/alternates):	640		13.5%	
Removed for Cause/Hardship:	874			
Removed by Peremptory Challenge:	482			

Jury Costs

Total Annual Budget for Juror Operations:	\$1,404,577.00	J
Average Cost Per Juror:	\$59.01	K

K=J/A

In mid-2011, AOPC began utilizing the National Center for State Courts' Jury Managers' Toolbox for collecting jury data. In 2012, the counties began providing additional jury data which included information about the summoning practices in the counties. With this additional data, we can now see not only how many citizens come to our courthouses every day in anticipation of serving on a jury, but the number of citizens actually summonsed and the number of those summonsed who are exempt, excused or disqualified from service. With this wider view of the jury process, we can determine the efficiency with which our courts operate, and with the assistance of the Jury Managers' Toolbox find guidance in streamlining the jury summonsing practices.