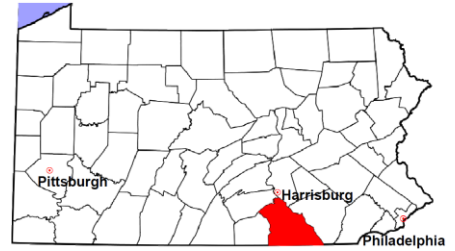


# York County

2012 Population Estimate: 437,846  
 Class of County: 3rd  
 No. of Common Pleas Court Judgeships: 15



## 2012 Criminal No. of Cases

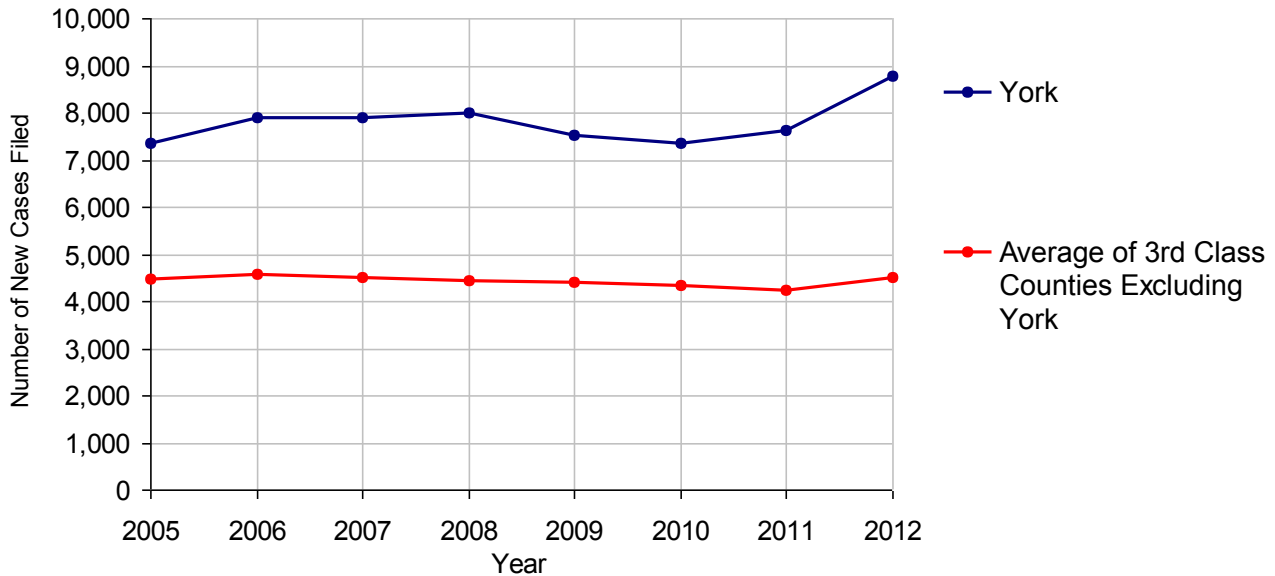
Cases Pending 1/1/2012	3,171	
New Cases Filed in 2012	8,766	
Reopened Cases	676	
<b>Cases Available for Disposition</b>	<b>12,613</b>	
<b>Disposed by:</b>		
Withdrawn/Dismissed	341	3.8%
ARD	1,630	18.1%
Guilty Plea	6,170	68.5%
Non-Jury Trial	46	0.5%
Jury Trial	138	1.5%
Inactive	399	4.4%
Other	285	3.2%
<b>Total Cases Disposed</b>	<b>9,009</b>	<b>100.0%</b>
<b>Cases Pending 12/31/2012</b>	<b>3,604</b>	
Cases Awaiting Sentencing	69	



Age of Pending Cases as of 12/31/2012		
0-60 Days	1,409	39.1%
61-120 Days	1,035	28.7%
121-180 Days	446	12.4%
181-240 Days	248	6.9%
241-300 Days	160	4.4%
301-360 Days	112	3.1%
Over 360 Days	194	5.4%
<b>Total</b>	<b>3,604</b>	<b>100.0%</b>

Data provided by CPCMS

**Criminal New Cases Filed, 2005-2012**

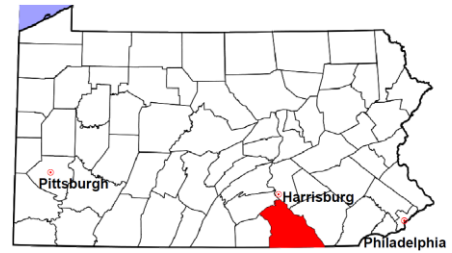


# York County

2012 Population Estimate: 437,846

Class of County: 3rd

No. of Common Pleas Court Judgeships: 15



## 2012 Criminal - New Cases by Case Type

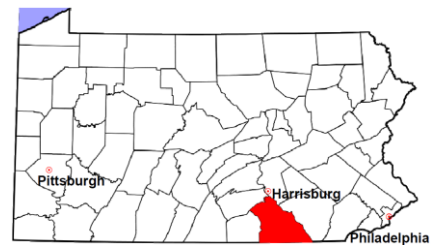


Case Type	Felony	Misdemeanor	Summary /Ungraded	Total
Person	415	615	3	1,033
Property	1,074	1,427	16	2,517
Drug	634	1,103	1	1,738
Weapon	59	43	0	102
Public Order	155	505	4	664
Motor Vehicle - DWI/DUI	0	2,678	0	2,678
Motor Vehicle - Other	2	30	1	33
Other	0	0	1	1
<b>Total</b>	<b>2,339</b>	<b>6,401</b>	<b>26</b>	<b>8,766</b>
	<b>26.7%</b>	<b>73.0%</b>	<b>0.3%</b>	<b>100.0%</b>

Data provided by CPCMS

# York County

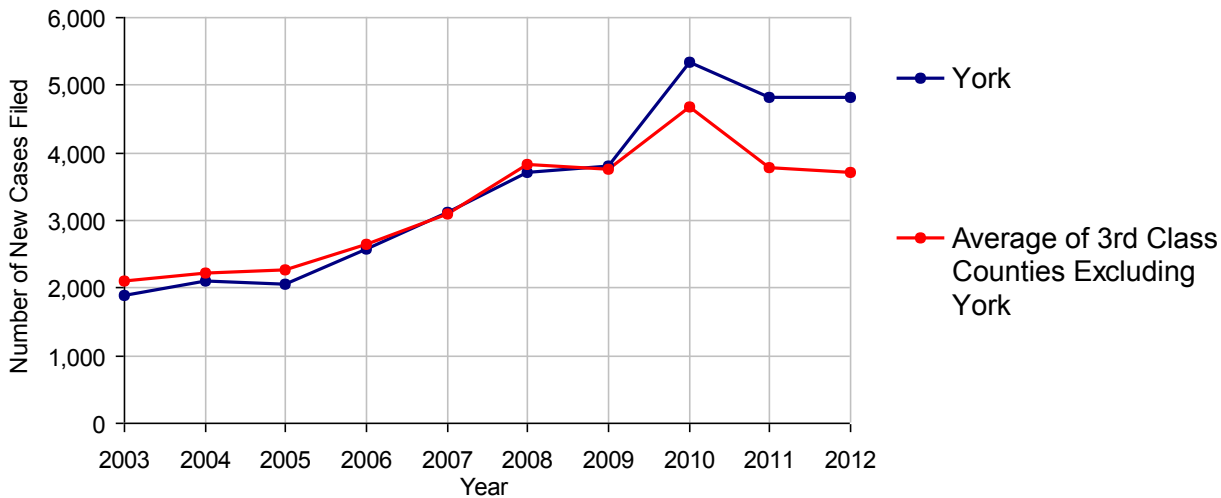
2012 Population Estimate: 437,846  
 Class of County: 3rd  
 No. of Common Pleas Court Judgeships: 15



2012 Civil	Civil Action	Other	Total
Cases Pending 1/1/2012	15,497	14,723	30,220
Docketed Cases	2,258	2,551	4,809
Arbitration Appeals	22	4	26
Transferred In	8	0	8
Returned to Active	0	0	0
<b>Cases Available for Processing</b>	<b>17,785</b>	<b>17,278</b>	<b>35,063</b>
Disposed By:			
Default Judgments	49	4,064	4,113
Cases Decided by Arbitration Board	104	15	119
Dispositive Motions	2	6	8
Settlements	12	4	16
Moved to Inactive Status	69	113	182
Transferred/Withdrawn	3	3	6
Administrative Purge	467	454	921
Other	837	449	1,286
Jury Trial	6	1	7
Non-Jury Trial	3	1	4
<b>Total Cases Disposed</b>	<b>1,552</b>	<b>5,110</b>	<b>6,662</b>
<b>Cases Pending 12/31/2012</b>	<b>16,233</b>	<b>12,168</b>	<b>28,401</b>

Age of Pending Cases as of 12/31/2012 (Civil Action Only)		
0-6 months	813	5.0%
7-12 months	951	5.9%
13-18 months	761	4.7%
19-24 months	823	5.1%
25-30 months	976	6.0%
31-36 months	1,039	6.4%
37-42 months	1,001	6.2%
43-48 months	1,048	6.5%
49-54 months	949	5.8%
55-60 months	638	3.9%
61-66 months	661	4.1%
67-72 months	453	2.8%
Over 72 months	6,120	37.7%
<b>Total</b>	<b>16,233</b>	<b>100.0%</b>

Docketed Cases, 2003-2012



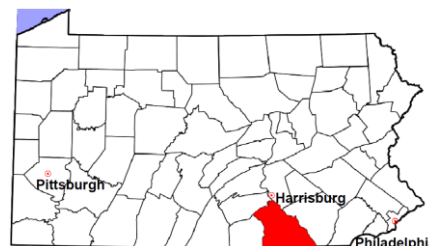
Note: Prior to June 2010, docketed cases under the "Other" category were not reported. The inclusion of these cases starting from June 2010 may contribute to an increase in docketed cases from 2009 to 2010.

# York County

2012 Population Estimate: 437,846

Class of County: 3rd

No. of Common Pleas Court Judgeships: 15



## 2012 Civil - Docketed Cases Listed by Case Type

### TORT 480 10.0%

*(does not include mass tort)*

Intentional	12
Malicious Prosecution	3
Motor Vehicle	318
Nuisance	2
Premise Liability	64
Product Liability	10
Slander/Libel/Defamation	3
Other	68

### MASS TORT 0

Asbestos	0
Tobacco	0
Toxic Tort - DES	0
Toxic Tort - Implant	0
Toxic Waste	0
Other	0

### PROFESSIONAL LIABILITY 23 0.5%

Dental	0
Legal	5
Medical Malpractice	16
Other	2

### CONTRACT 1,687 35.1%

*(does not include judgments)*

Buyer Plaintiff	40
Debt Collection: Credit Card	950
Debt Collection: Other	580
Employment Dispute:	
Employment Dispute: Discriminatio	2
Employment Dispute: Other	10
Other	105

### REAL PROPERTY 2,079 43.2%

Ejectment*	119
Eminent Domain/Condemnation	43
Ground Rent	0
Landlord/Tenant Dispute	68
Mortgage Foreclosure:	
Residential*	1,716
Commercial*	24
Partition of Real Property*	11
Quiet Title*	63
Other*	35

### CIVIL APPEALS 441 9.2%

*- Administrative Agencies*

Board of Assessment*	189
Board of Elections*	58
Dept. of Transportation*	89
Zoning Board*	11
Statutory Appeal - Other*	5
Other*	89

### MISCELLANEOUS 99 2.1%

Common Law/	
Statutory Arbitration*	1
Declaratory Judgment*	19
Mandamus*	2
Non-Domestic Relations	
Restraining Order*	1
Quo Warranto*	0
Replevin*	22
Other*	54

### TOTAL DOCKETED CASES: 4,809 100%

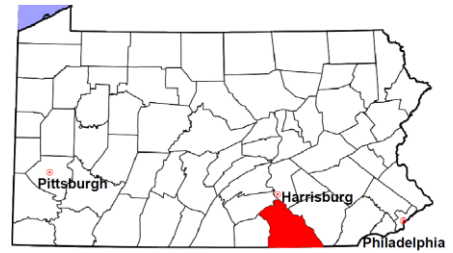
#### Of the Docketed Cases:

Pro Se Filings:	183	3.8%	Class Action Suits:	0	MDJ Appeals:	189	3.9%
-----------------	-----	------	---------------------	---	--------------	-----	------

\* Civil Other

# York County

2012 Population Estimate: 437,846  
 Class of County: 3rd  
 No. of Common Pleas Court Judgeships: 15



## 2012 Protection From Abuse

**No. of  
Petitions**

Cases Pending 1/1/2012 32

New Cases Filed in 2012 804

*Of these, Petitions Requesting Temporary Orders: 804 (100.0%)*

*Temporary Orders DENIED: 373 (46.4%), Temporary Orders GRANTED: 431 (53.6%)*

**Cases Available for Processing 836**

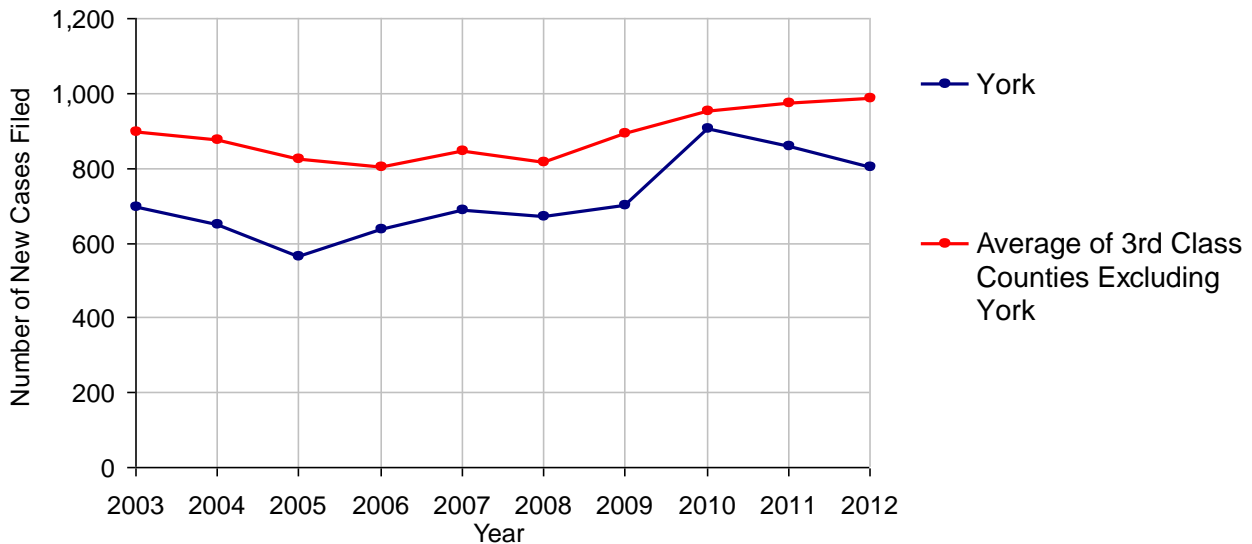
Processed By:

Temporary Order DENIED After Ex Parte Hearing and No Evidentiary Hearing Scheduled	0	
Temporary Order DISMISSED After Evidentiary Hearing and No Final Order Entered	0	
Final Order DENIED After Evidentiary Hearing Before a Judge	69	8.4%
Final Order GRANTED After Evidentiary Hearing Before a Judge	87	10.6%
Plaintiff Did Not Appear For Evidentiary Hearing	198	24.2%
Final Order by STIPULATION OR AGREEMENT Between the Parties	231	28.2%
Petition WITHDRAWN by Plaintiff	223	27.3%
TRANSFERRED to Another Jurisdiction	0	
DECEASED Party	0	
Other	10	1.2%

**Cases Processed 818 100.0%**

**Cases Pending 12/31/2012 18**

**PFA New Cases Filed, 2003-2012**

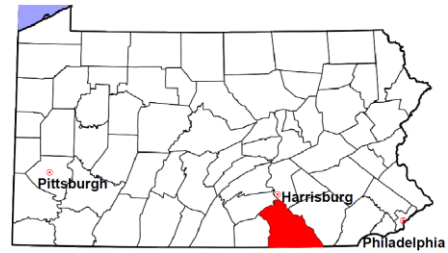


# York County

2012 Population Estimate: 437,846

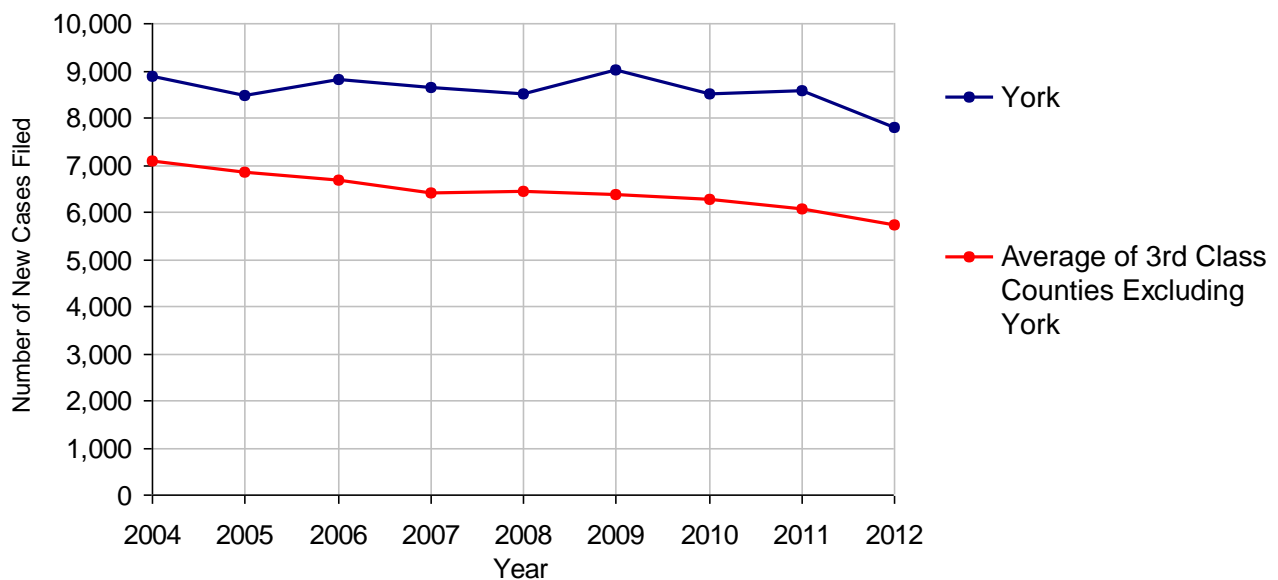
Class of County: 3rd

No. of Common Pleas Court Judgeships: 15



<b>2012 Spousal &amp; Child Support</b>	<b>No. of Petitions</b>	
Cases Pending 1/1/2012	1,623	
New Cases Filed in 2012	7,806	
Dockets Transferred In (+)	116	
Dockets Transferred Out (-)	68	
<b>Cases Available for Processing</b>	<b>9,477</b>	
Processed By:		
Judge	357	4.3%
Intake Officer	7,868	95.6%
Hearing Officer	0	
Other	1	<0.1%
<b>Cases Processed</b>	<b>8,226</b>	<b>100.0%</b>
<b>Cases Pending 12/31/2012</b>	<b>1,251</b>	

**Spousal & Child Support New Cases Filed, 2004-2012**

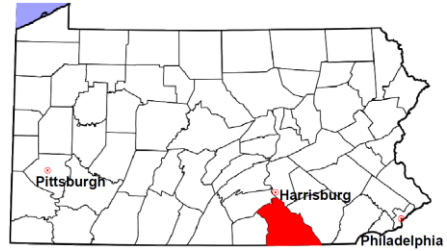


# York County

2012 Population Estimate: 437,846

Class of County: 3rd

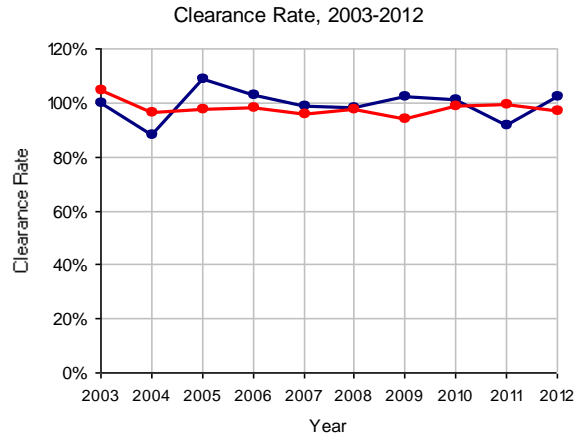
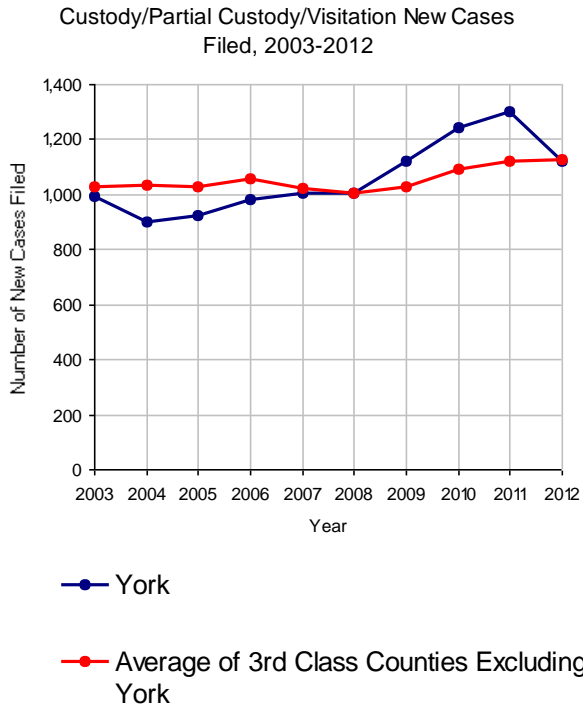
No. of Common Pleas Court Judgeships: 15



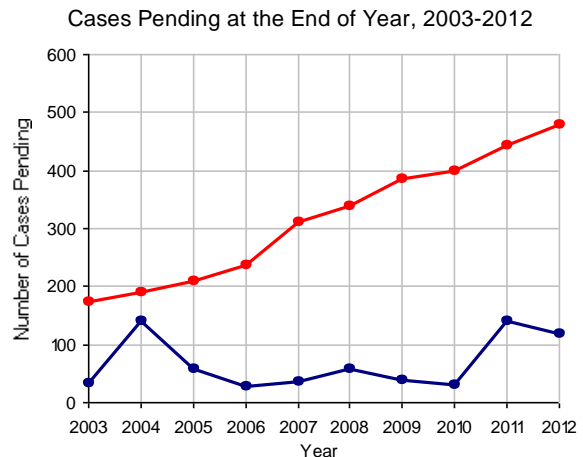
## 2012 Custody/Partial Custody/Visitation

No. of Petitions

Cases Pending 1/1/2012	141
New Cases Filed in 2012	1,119
<b>Cases Available for Processing</b>	<b>1,260</b>
Processed By:	
Judge	176 15.4%
Non-Judicial Officer	855 74.8%
Other	112 9.8%
<b>Cases Processed</b>	<b>1,143 100.0%</b>
<b>Cases Pending 12/31/2012</b>	<b>117</b>



Note: Clearance Rate = Cases Processed / New Cases Filed

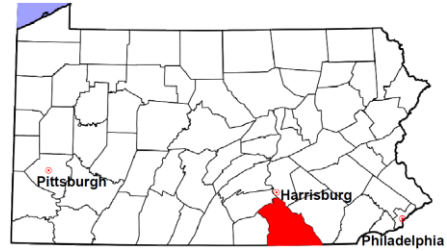


# York County

2012 Population Estimate: 437,846

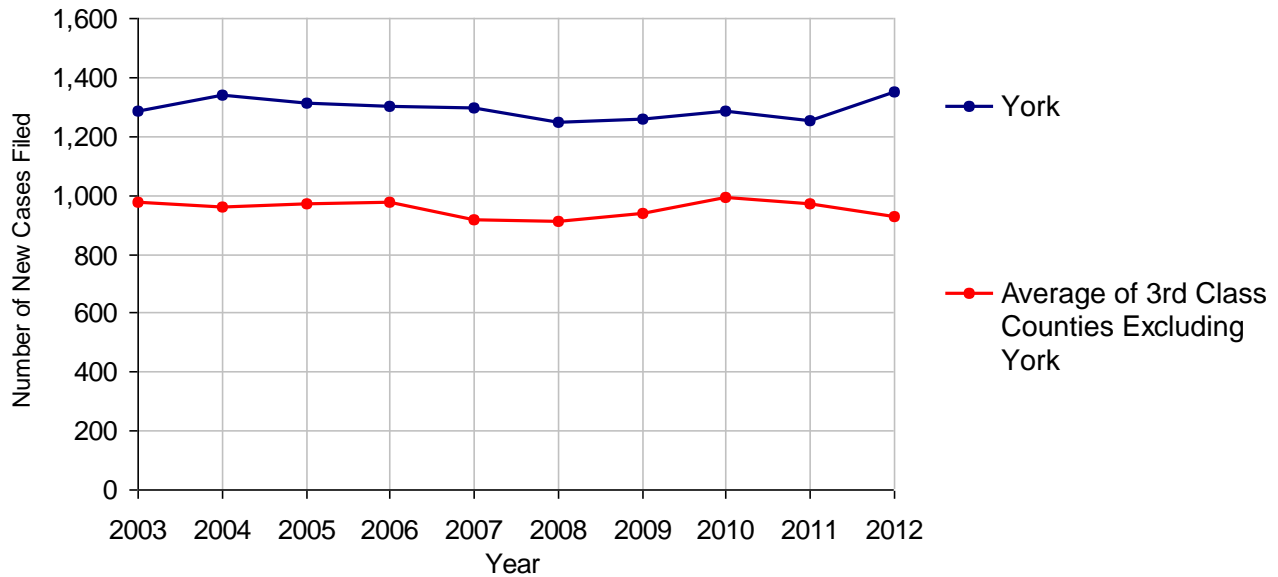
Class of County: 3rd

No. of Common Pleas Court Judgeships: 15



<b>2012 Divorce</b>	<b>No. of Petitions</b>	
Cases Pending 1/1/2012	2,984	
New Cases Filed in 2012	1,352	
<b>Cases Available for Processing</b>	<b>4,336</b>	
Processed By:		
Contested Before a Judge	53	3.2%
Contested Before a Master	3	0.2%
Uncontested	1,212	74.2%
Other	365	22.4%
<b>Cases Processed</b>	<b>1,633</b>	<b>100.0%</b>
<b>Cases Pending 12/31/2012</b>	<b>2,703</b>	

**Divorce New Cases Filed, 2003-2012**



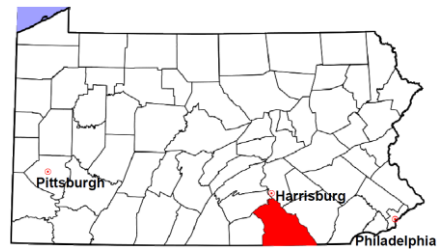


# York County

2012 Population Estimate: 437,846

Class of County: 3rd

No. of Common Pleas Court Judgeships: 15



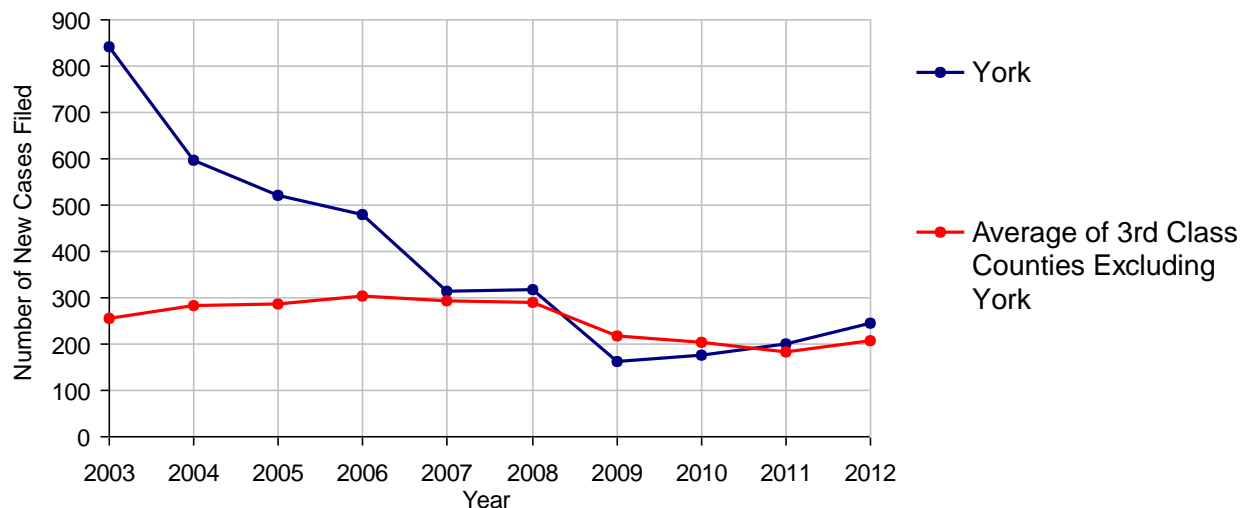
## 2012 Juvenile Dependency - Active Dependent Inventory



	Abuse/ Neglect	Status Offenses	Total
Cases Pending 1/1/2012	23	0	23
New Petitions Filed in 2012	244	0	244
Other	2	0	2
<b>Total Petitions Available for Processing</b>	<b>269</b>	<b>0</b>	<b>269</b>
Processed by:			
Adjudicated Dependent			
Judge	206	0	206
Master	0	0	0
Adjudicated NOT Dependent			
Judge	1	0	1
Master	0	0	0
Withdrawn/Dismissed/Inactive	39	0	39
Other	5	0	5
<b>Total Petitions Processed</b>	<b>251</b>	<b>0</b>	<b>251</b>
<b>Cases Pending 12/31/2012</b>	<b>18</b>	<b>0</b>	<b>18</b>

Data provided by CPCMS

Abuse/Neglect and Status Offenses New Cases Filed, 2003-2012



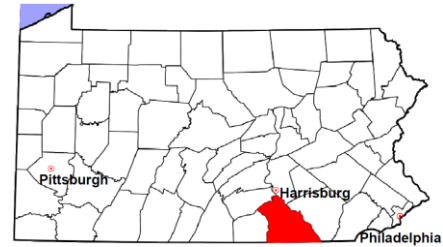
Note: Dependency data for 2002-2010 were collected manually. Dependency data for 2011 and 2012 were provided by CPCMS.

# York County

2012 Population Estimate: 437,846

Class of County: 3rd

No. of Common Pleas Court Judgeships: 15



## 2012 Juvenile Dependency - Adjudicated Dependent Inventory

	Abuse/ Neglect	Status Offenses	Total			
Cases Pending 1/1/2012	339	0	339			
New Adjudicated Dependent Cases	206	0	206			
Other	4	0	4			
<b>Total Adjudicated Dependent Cases</b>	<b>549</b>	<b>0</b>	<b>549</b>			
<b><u>Court Supervision Terminated:</u></b>						
Family Reunification	44	32.1%	0	44	32.1%	
Adoption	21	15.3%	0	21	15.3%	
Placement with a Relative/Guardian	28	20.4%	0	28	20.4%	
Aged Out	38	27.7%	0	38	27.7%	
Other Permanency Outcomes*	0		0	0		
Other**	6	4.4%	0	6	4.4%	
<b>Total Adjudicated Dependent Cases Terminated</b>	<b>137</b>	<b>100.0%</b>	<b>0</b>	<b>100.0%</b>	<b>137</b>	<b>100.0%</b>
<b>Cases Pending 12/31/2012</b>	<b>412</b>		<b>0</b>		<b>412</b>	

Data provided by CPCMS

\* Other Permanency Outcomes include: adjudicated delinquent, death due to natural causes, death due to negligence, emancipation, permanent living arrangement, and parent has come forward.

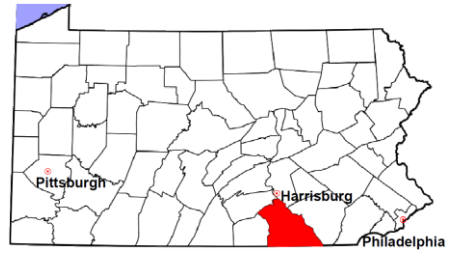
\*\* Other includes cases where court supervision is terminated due to transfer out of jurisdiction, withdrawal and administrative closure.

# York County

2012 Population Estimate: 437,846

Class of County: 3rd

No. of Common Pleas Court Judgeships: 15



## 2012 Juvenile Delinquency

**No. of Cases**

Cases Pending 1/1/2012 316

New Cases Filed in 2012 934

**Cases Available for Processing 1,250**

Processed By:

Judge 384 41.2%

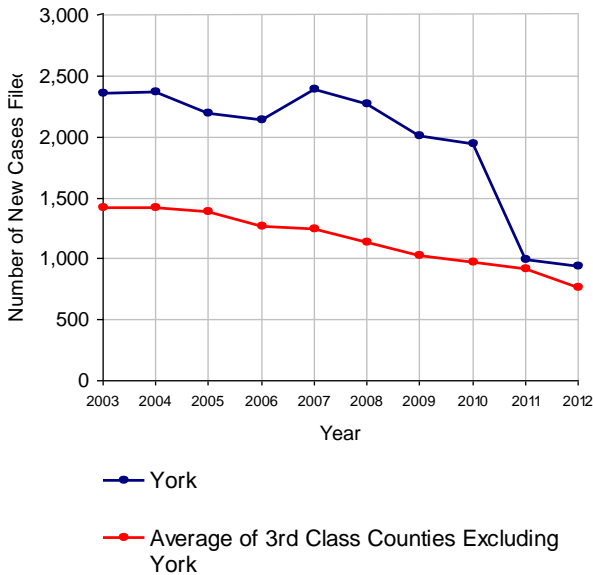
**Non-Judicial Officer 464 49.8%**

Other 84 9.0%

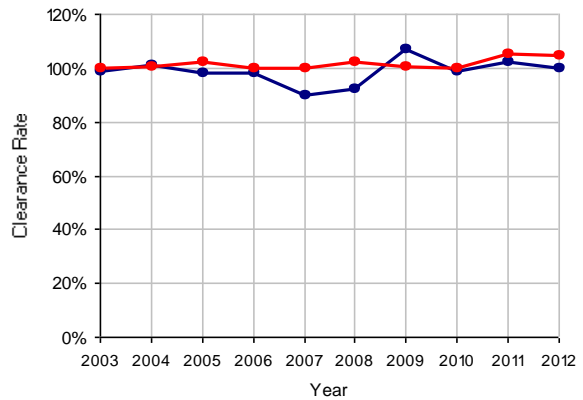
**Cases Processed 932 100.0%**

**Cases Pending 12/31/2012 318**

Juvenile Delinquency New Cases Filed, 2003-2012

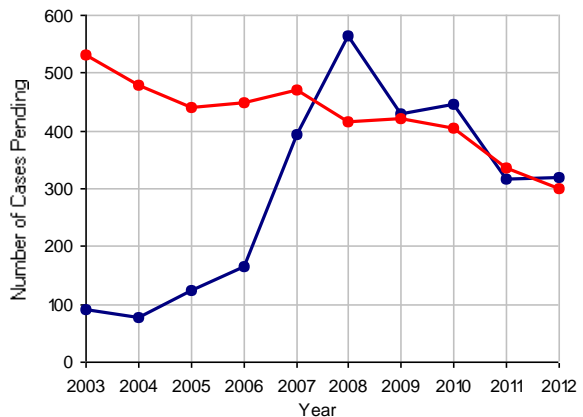


Clearance Rate, 2003-2012



Note: Clearance Rate = Cases Processed / New Cases Filed

Cases Pending at the End of Year, 2003-2012

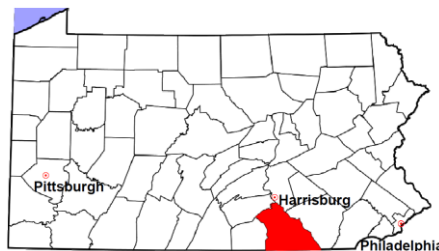


# York County

2012 Population Estimate: 437,846

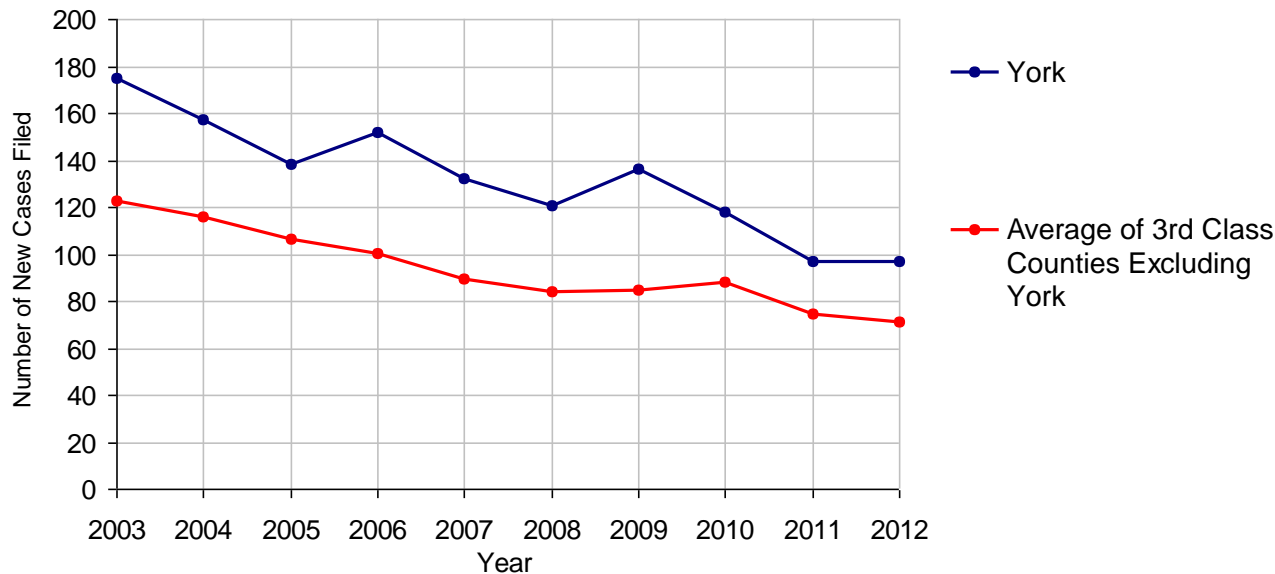
Class of County: 3rd

No. of Common Pleas Court Judgeships: 15



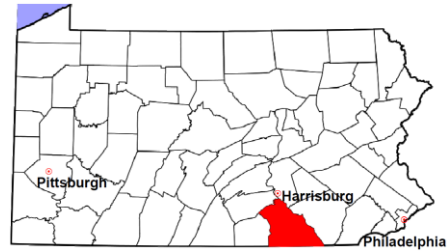
<b>2012 Accounts</b>	<b>No. of Cases</b>	
Cases Pending 1/1/2012	28	
New Cases Filed in 2012	97	
<b>Cases Available for Processing</b>	<b>125</b>	
Processed By:		
Contested before a Judge	23	20.9%
Contested before a Non-judicial Officer	0	
Uncontested	87	79.1%
Other	0	
<b>Cases Processed</b>	<b>110</b>	<b>100.0%</b>
<b>Cases Pending 12/31/2012</b>	<b>15</b>	

**Accounts New Cases Filed, 2003-2012**



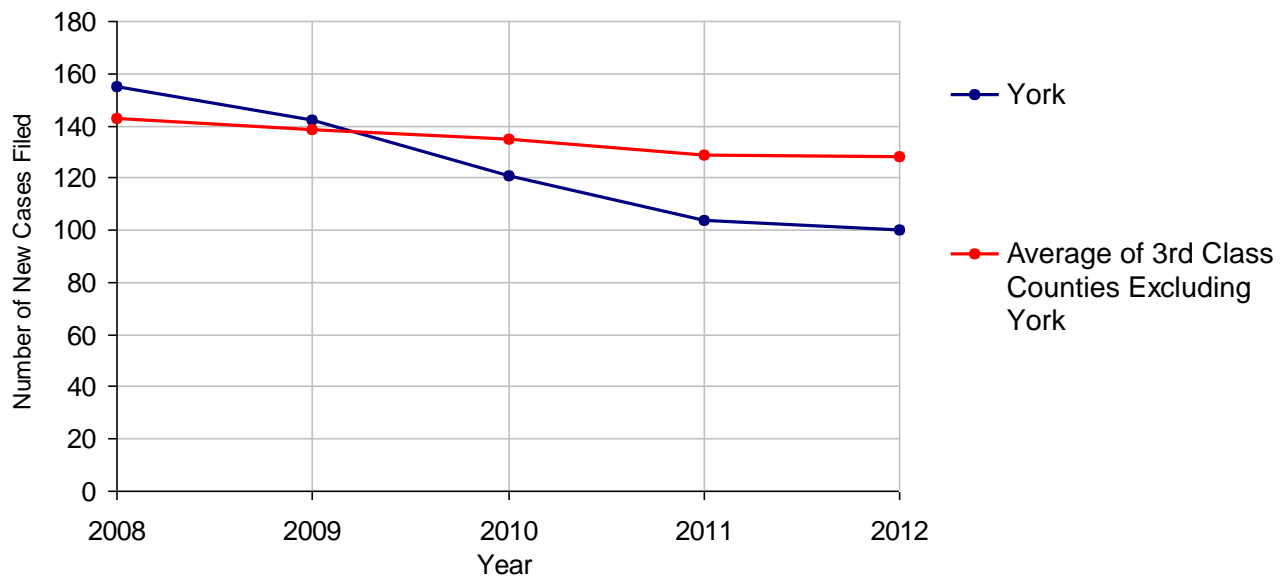
# York County

2012 Population Estimate: 437,846  
 Class of County: 3rd  
 No. of Common Pleas Court Judgeships: 15



<b>2012 Adoptions</b>		<b>No. of Cases</b>	
Cases Pending 1/1/2012		45	
New Cases Filed in 2012		100	
<b>Cases Available for Processing</b>		<b>145</b>	
Processed By:			
Contested before a Judge	Granted	0	
	Denied	0	
Uncontested	Granted	106	92.2%
	Denied	0	
Other		9	7.8%
<b>Cases Processed</b>		<b>115</b>	<b>100.0%</b>
<b>Cases Pending 12/31/2012</b>		<b>30</b>	

**Adoptions New Cases Filed, 2008-2012**



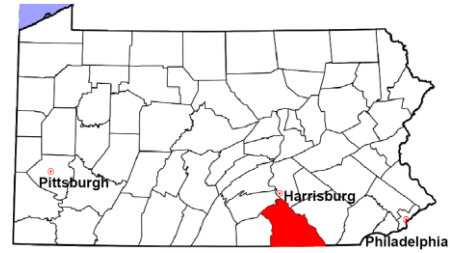
Note: Prior to 2008, each petition was counted as one new case, regardless of the number of children listed on the petition. Starting in 2008, each child listed on a petition is counted as a separate case. Therefore, statistics since 2008 should not be compared to statistics prior to 2008.

# York County

2012 Population Estimate: 437,846

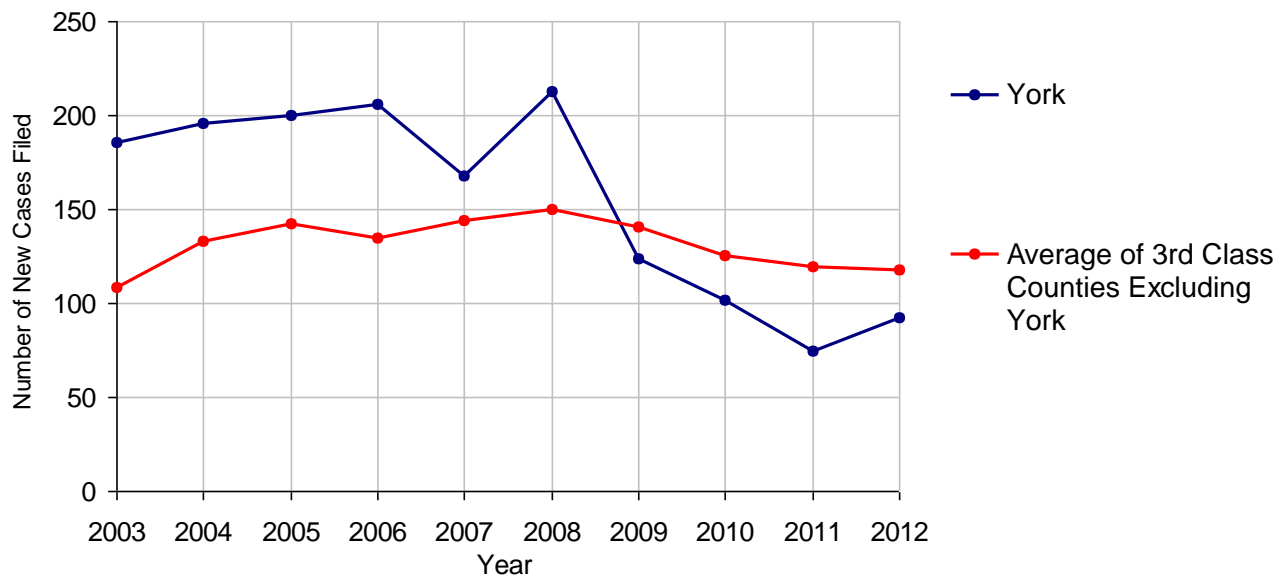
Class of County: 3rd

No. of Common Pleas Court Judgeships: 15



<b>2012 Relinquishments/Terminations</b>		<b>No. of Cases</b>	
Cases Pending 1/1/2012		37	
New Cases Filed in 2012		92	
<b>Cases Available for Processing</b>		<b>129</b>	
Processed By:			
Contested before a Judge	12	13.0%	
Uncontested	76	82.6%	
Other	4	4.3%	
<b>Cases Processed</b>	<b>92</b>	<b>100.0%</b>	
<b>Cases Pending 12/31/2012</b>		<b>37</b>	

**Relinquishments/Terminations New Cases Filed, 2003-2012**

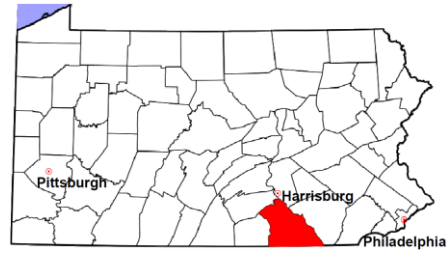


# York County

2012 Population Estimate: 437,846

Class of County: 3rd

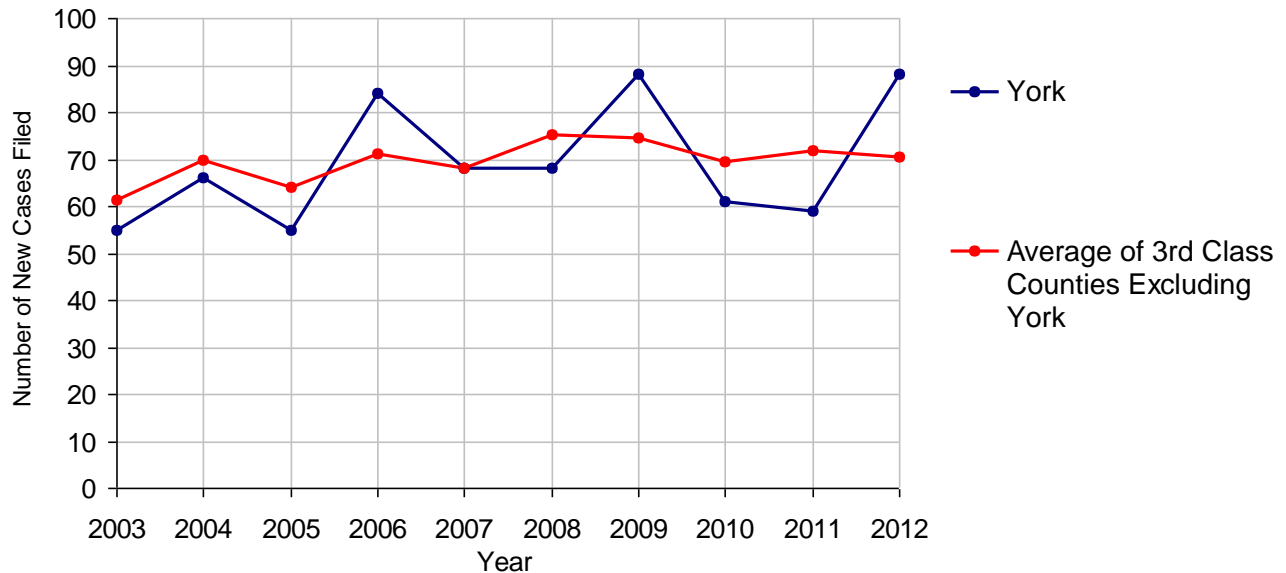
No. of Common Pleas Court Judgeships: 15



## 2012 Appointment of Guardians

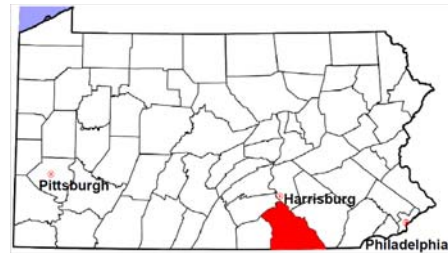
	No. of Cases
Cases Pending 1/1/2012	10
New Cases Filed in 2012	88
<b>Cases Available for Processing</b>	<b>98</b>
Processed By:	
Contested before a Judge	2 2.4%
Uncontested	68 81.0%
Other	14 16.7%
<b>Cases Processed</b>	<b>84 100.0%</b>
<b>Cases Pending 12/31/2012</b>	<b>14</b>

Appointment of Guardians New Cases Filed, 2003-2012



# York County

2012 Population Estimate: 437,846  
 Class of County: 3rd  
 No. of Common Pleas Court Judgeships: 15



## 2012 Jury Yield and Utilization

### Jury Yield

Qualification Questionnaires/Summonses Mailed:	11,519	A		
Returned Undeliverable:	1,246	B	10.8%	Of Qualification Questionnaires/ Summonses Mailed
Not Responded to:	2,419	C	21.0%	
the Number of Prospective Jurors:				
Disqualified:	727	D	6.3%	
Exempted:	0	E		
Excused:	4,002	F	34.7%	
Deferred to New Term:	280	G	2.4%	
Deferred from Previous Term:	0	H		
<b>Total Number of Qualified Jurors Available for Service:</b>	<b>2,845</b>	<b>I</b>	<b>24.7%</b>	

$I = A - B - C - D - E - F - G + H$

### Jury Utilization

the Number of Jurors:			
Reporting for Service:	3,862	135.7%	Of Jurors Qualified and Available
Told Not to Report for Service:	253	8.9%	
Sent to Courtroom for Jury Selection (Voir Dire):	11,026	285.5%	Of Jurors Reporting for Service
Impanelled or Sworn (jurors/alternates):	1,732	44.8%	
Removed for Cause/Hardship:	571		
Removed by Peremptory Challenge:	9,294		

### Jury Costs

Total Annual Budget for Juror Operations:	\$320,514.00	J
Average Cost Per Juror:	\$27.82	K

$K = J/A$

In mid-2011, AOPC began utilizing the National Center for State Courts' Jury Managers' Toolbox for collecting jury data. In 2012, the counties began providing additional jury data which included information about the summoning practices in the counties. With this additional data, we can now see not only how many citizens come to our courthouses every day in anticipation of serving on a jury, but the number of citizens actually summonsed and the number of those summonsed who are exempt, excused or disqualified from service. With this wider view of the jury process, we can determine the efficiency with which our courts operate, and with the assistance of the Jury Managers' Toolbox find guidance in streamlining the jury summoning practices.