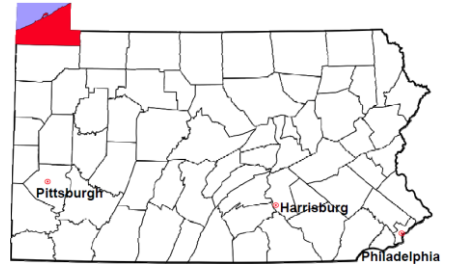


# Erie County

2012 Population Estimate: 280,646  
 Class of County: 3rd  
 No. of Common Pleas Court Judgeships: 9



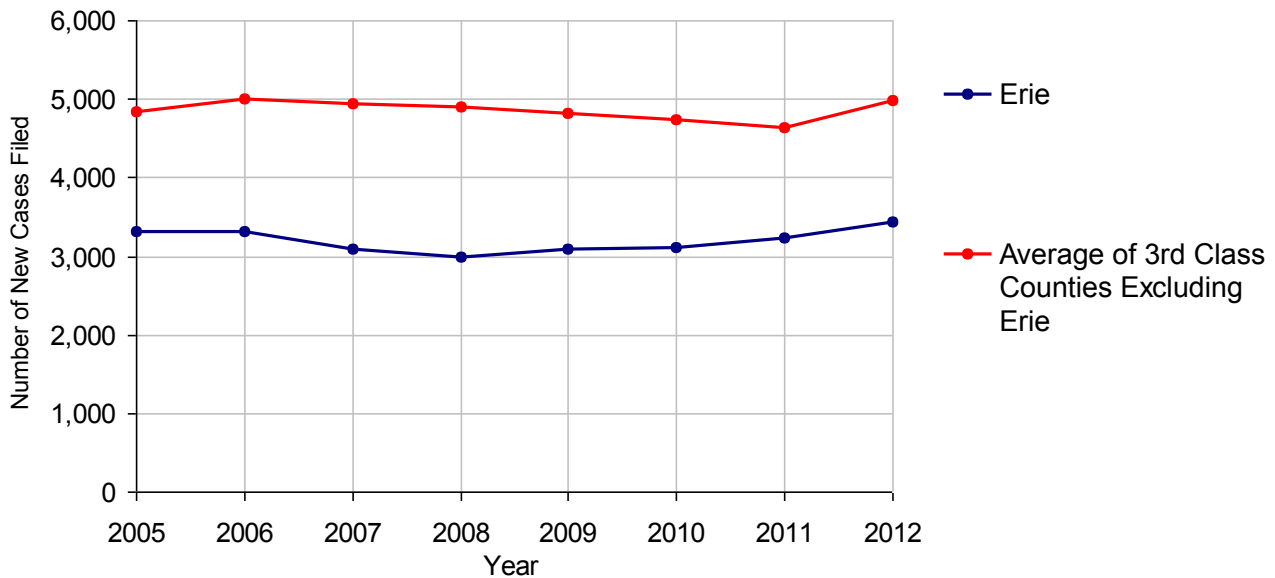
<b>2012 Criminal</b>	<b>No. of Cases</b>
Cases Pending 1/1/2012	1,510
New Cases Filed in 2012	3,443
Reopened Cases	146
<b>Cases Available for Disposition</b>	<b>5,099</b>
<b>Disposed by:</b>	
Withdrawn/Dismissed	304 9.8%
ARD	298 9.6%
Guilty Plea	2,122 68.6%
Non-Jury Trial	23 0.7%
Jury Trial	106 3.4%
Inactive	131 4.2%
Other	111 3.6%
<b>Total Cases Disposed</b>	<b>3,095 100.0%</b>
<b>Cases Pending 12/31/2012</b>	<b>2,004</b>
Cases Awaiting Sentencing	133



<b>Age of Pending Cases as of 12/31/2012</b>		
0-60 Days	628	31.3%
61-120 Days	605	30.2%
121-180 Days	389	19.4%
181-240 Days	214	10.7%
241-300 Days	101	5.0%
301-360 Days	24	1.2%
Over 360 Days	43	2.1%
<b>Total</b>	<b>2,004</b>	<b>100.0%</b>

Data provided by CPCMS

**Criminal New Cases Filed, 2005-2012**

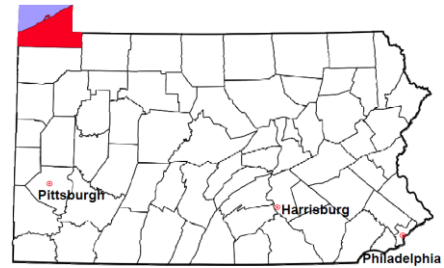


# Erie County

2012 Population Estimate: 280,646

Class of County: 3rd

No. of Common Pleas Court Judgeships: 9



## 2012 Criminal - New Cases by Case Type

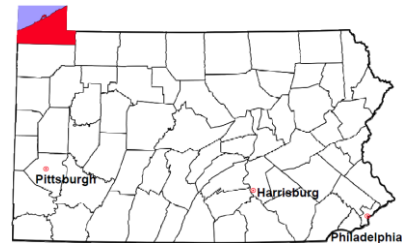


Case Type	Felony	Misdemeanor	Summary /Ungraded	Total
Person	297	267	0	564
Property	527	544	13	1,084
Drug	189	265	2	456
Weapon	47	12	0	59
Public Order	60	214	4	278
Motor Vehicle - DWI/DUI	0	981	1	982
Motor Vehicle - Other	3	13	0	16
Other	2	2	0	4
<b>Total</b>	<b>1,125</b>	<b>2,298</b>	<b>20</b>	<b>3,443</b>
	<b>32.7%</b>	<b>66.7%</b>	<b>0.6%</b>	<b>100.0%</b>

Data provided by CPCMS

# Erie County

2012 Population Estimate: 280,646  
 Class of County: 3rd  
 No. of Common Pleas Court Judgeships: 9



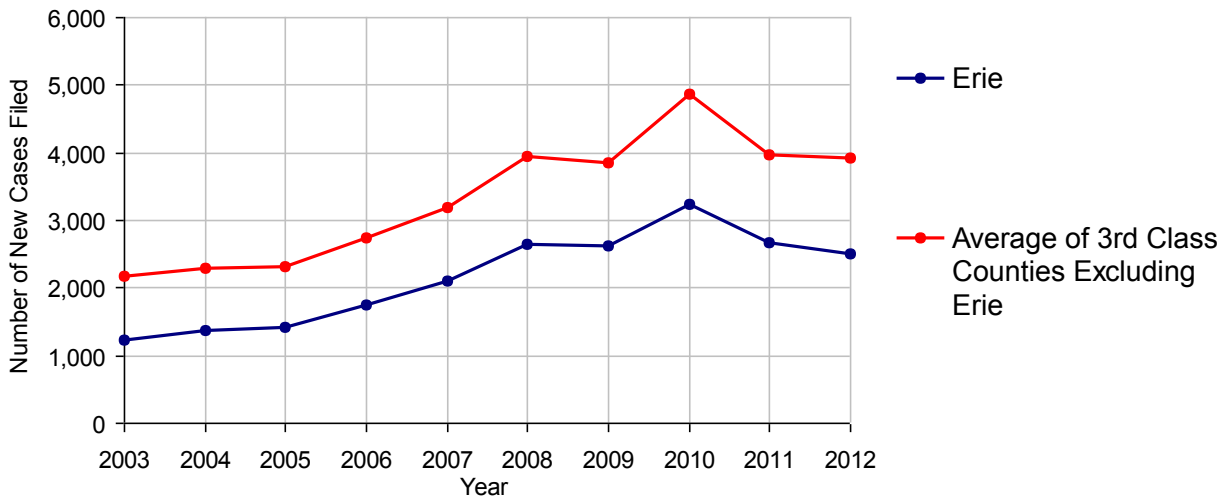
2012 Civil	Civil Action	Other	Total
Cases Pending 1/1/2012	1,861	2,037	3,898 (R)
Docketed Cases	1,583	925	2,508
Arbitration Appeals	0	0	0
Transferred In	0	0	0
Returned to Active	0	0	0
<b>Cases Available for Processing</b>	<b>3,444</b>	<b>2,962</b>	<b>6,406</b>
Disposed By:			
Default Judgments	649	407	1,056
Cases Decided by Arbitration Board	35	4	39
Dispositive Motions	37	42	79
Settlements	568	223	791
Moved to Inactive Status	0	0	0
Transferred/Withdrawn	1	0	1
Administrative Purge	0	0	0
Other	0	0	0
Jury Trial	14	0	14
Non-Jury Trial	0	0	0
<b>Total Cases Disposed</b>	<b>1,304</b>	<b>676</b>	<b>1,980</b>
<b>Cases Pending 12/31/2012</b>	<b>2,140</b>	<b>2,286</b>	<b>4,426</b>

### Age of Pending Cases as of 12/31/2012 (Civil Action Only)

0-6 months	595	27.8%
7-12 months	378	17.7%
13-18 months	363	17.0%
19-24 months	281	13.1%
25-30 months	299	14.0%
31-36 months	44	2.1%
37-42 months	59	2.8%
43-48 months	26	1.2%
49-54 months	34	1.6%
55-60 months	17	0.8%
61-66 months	19	0.9%
67-72 months	8	0.4%
Over 72 months	17	0.8%
<b>Total</b>	<b>2,140</b>	<b>100.0%</b>

(R) - Revised

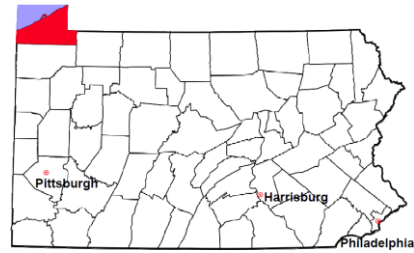
Docketed Cases, 2003-2012



Note: Prior to June 2010, docketed cases under the "Other" category were not reported. The inclusion of these cases starting from June 2010 may contribute to an increase in docketed cases from 2009 to 2010.

# Erie County

2012 Population Estimate: 280,646  
 Class of County: 3rd  
 No. of Common Pleas Court Judgeships: 9



## 2012 Civil - Docketed Cases Listed by Case Type

<b>TORT</b>	<b>423</b>	<b>16.9%</b>
<i>(does not include mass tort)</i>		
Intentional	15	
Malicious Prosecution	1	
Motor Vehicle	263	
Nuisance	1	
Premise Liability	81	
Product Liability	15	
Slander/Libel/Defamation	1	
Other	46	
<b>MASS TORT</b>	<b>2</b>	<b>0.1%</b>
Asbestos	1	
Tobacco	0	
Toxic Tort - DES	0	
Toxic Tort - Implant	0	
Toxic Waste	0	
Other	1	
<b>PROFESSIONAL LIABILITY</b>	<b>40</b>	<b>1.6%</b>
Dental	1	
Legal	3	
Medical Malpractice	34	
Other	2	
<b>CONTRACT</b>	<b>1,058</b>	<b>42.2%</b>
<i>(does not include judgments)</i>		
Buyer Plaintiff	35	
Debt Collection: Credit Card	516	
Debt Collection: Other	401	
Employment Dispute:		
Employment Dispute: Discriminatio	3	
Employment Dispute: Other	6	
Other	97	

<b>REAL PROPERTY</b>	<b>695</b>	<b>27.7%</b>
Ejectment*	61	
Eminent Domain/Condemnation	26	
Ground Rent	0	
Landlord/Tenant Dispute	60	
Mortgage Forclosures:		
Residential*	488	
Commercial*	13	
Partition of Real Property*	7	
Quiet Title*	28	
Other*	12	
<b>CIVIL APPEALS</b>	<b>200</b>	<b>8.0%</b>
<i>- Administrative Agencies</i>		
Board of Assessment*	79	
Board of Elections*	0	
Dept. of Transportation*	101	
Zoning Board*	8	
Statutory Appeal - Other*	9	
Other*	3	
<b>MISCELLANEOUS</b>	<b>90</b>	<b>3.6%</b>
Common Law/		
Statutory Arbitration*	0	
Declaratory Judgment*	15	
Mandamus*	1	
Non-Domestic Relations		
Restraining Order*	1	
Quo Warranto*	1	
Replevin*	21	
Other*	51	
<b>TOTAL DOCKETED CASES:</b>	<b>2,508</b>	<b>100%</b>

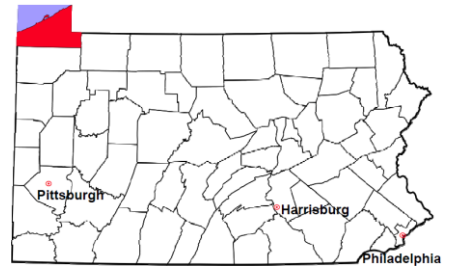
### Of the Docketed Cases:

Pro Se Filings: 172 6.9%      Class Action Suits: 8 0.3%      MDJ Appeals: 226 9.0%

\* Civil Other

# Erie County

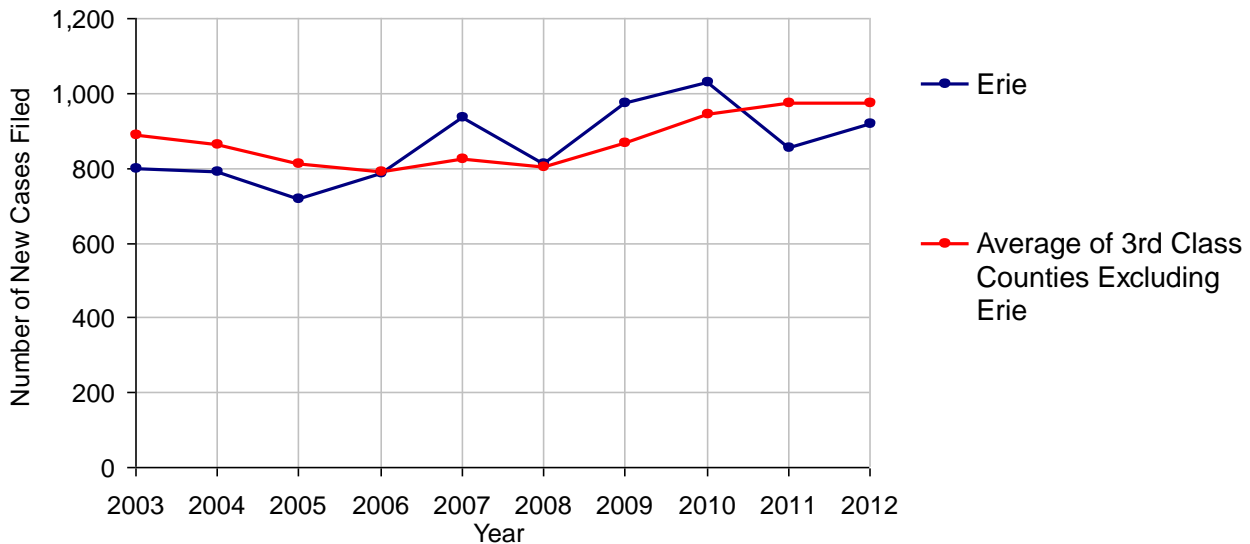
2012 Population Estimate: 280,646  
 Class of County: 3rd  
 No. of Common Pleas Court Judgeships: 9



## 2012 Protection From Abuse

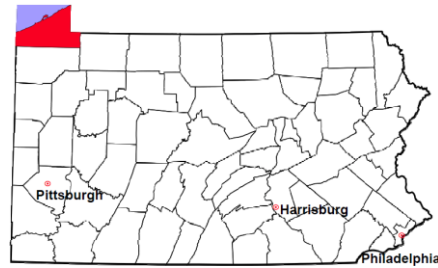
	No. of Petitions
Cases Pending 1/1/2012	8
New Cases Filed in 2012	918
<i>Of these, Petitions Requesting Temporary Orders: 918 (100.0%)</i>	
<i>Temporary Orders DENIED: 155 (16.9%), Temporary Orders GRANTED: 763 (83.1%)</i>	
<b>Cases Available for Processing</b>	<b>926</b>
Processed By:	
Temporary Order DENIED After Ex Parte Hearing and No Evidentiary Hearing Scheduled	146 16.0%
Temporary Order DISMISSED After Evidentiary Hearing and No Final Order Entered	5 0.5%
Final Order DENIED After Evidentiary Hearing Before a Judge	65 7.1%
Final Order GRANTED After Evidentiary Hearing Before a Judge	171 18.8%
Plaintiff Did Not Appear For Evidentiary Hearing	72 7.9%
Final Order by STIPULATION OR AGREEMENT Between the Parties	305 33.5%
Petition WITHDRAWN by Plaintiff	145 15.9%
TRANSFERRED to Another Jurisdiction	0
DECEASED Party	1 0.1%
Other	0
<b>Cases Processed</b>	<b>910 100.0%</b>
<b>Cases Pending 12/31/2012</b>	<b>16</b>

**PFA New Cases Filed, 2003-2012**



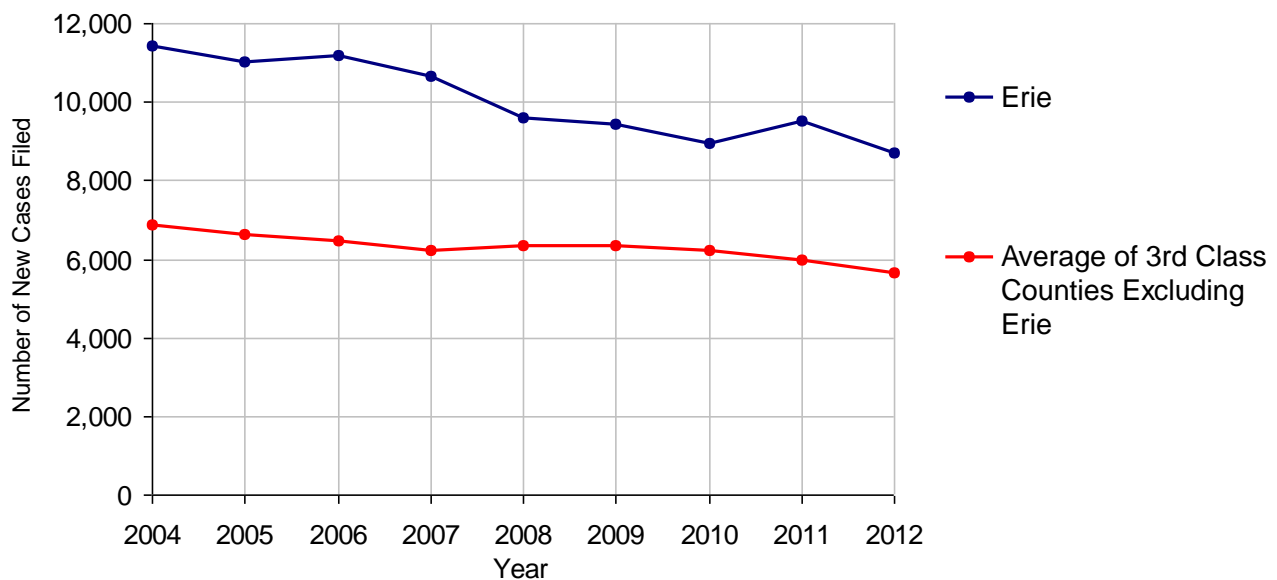
# Erie County

2012 Population Estimate: 280,646  
 Class of County: 3rd  
 No. of Common Pleas Court Judgeships: 9



<b>2012 Spousal &amp; Child Support</b>	<b>No. of Petitions</b>	
Cases Pending 1/1/2012	1,535	
New Cases Filed in 2012	8,714	
Dockets Transferred In (+)	57	
Dockets Transferred Out (-)	63	
<b>Cases Available for Processing</b>	<b>10,243</b>	
Processed By:		
Judge	383	4.3%
Intake Officer	8,440	95.7%
Hearing Officer	0	
Other	0	
<b>Cases Processed</b>	<b>8,823</b>	<b>100.0%</b>
<b>Cases Pending 12/31/2012</b>	<b>1,420</b>	

**Spousal & Child Support New Cases Filed, 2004-2012**

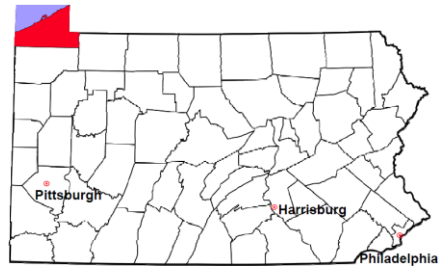


# Erie County

2012 Population Estimate: 280,646

Class of County: 3rd

No. of Common Pleas Court Judgeships: 9



## 2012 Custody/Partial Custody/Visitation

No. of  
Petitions

Cases Pending 1/1/2012 316

New Cases Filed in 2012 1,283

**Cases Available for Processing 1,599**

Processed By:

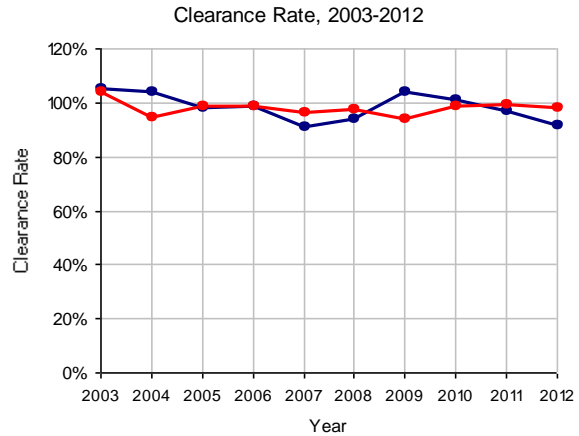
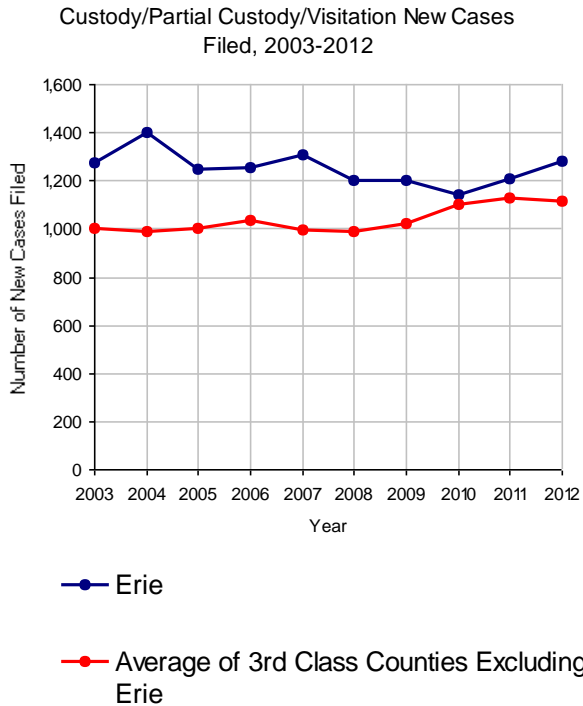
Judge 152 13.0%

Non-Judicial Officer 918 78.3%

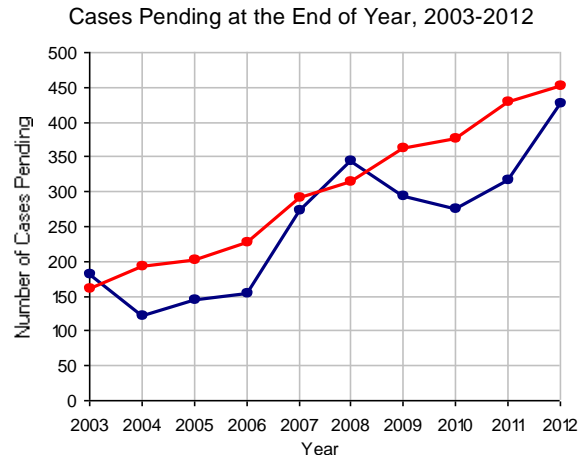
Other 103 8.8%

**Cases Processed 1,173 100.0%**

**Cases Pending 12/31/2012 426**

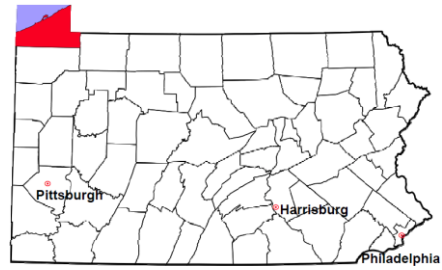


Note: Clearance Rate = Cases Processed / New Cases Filed



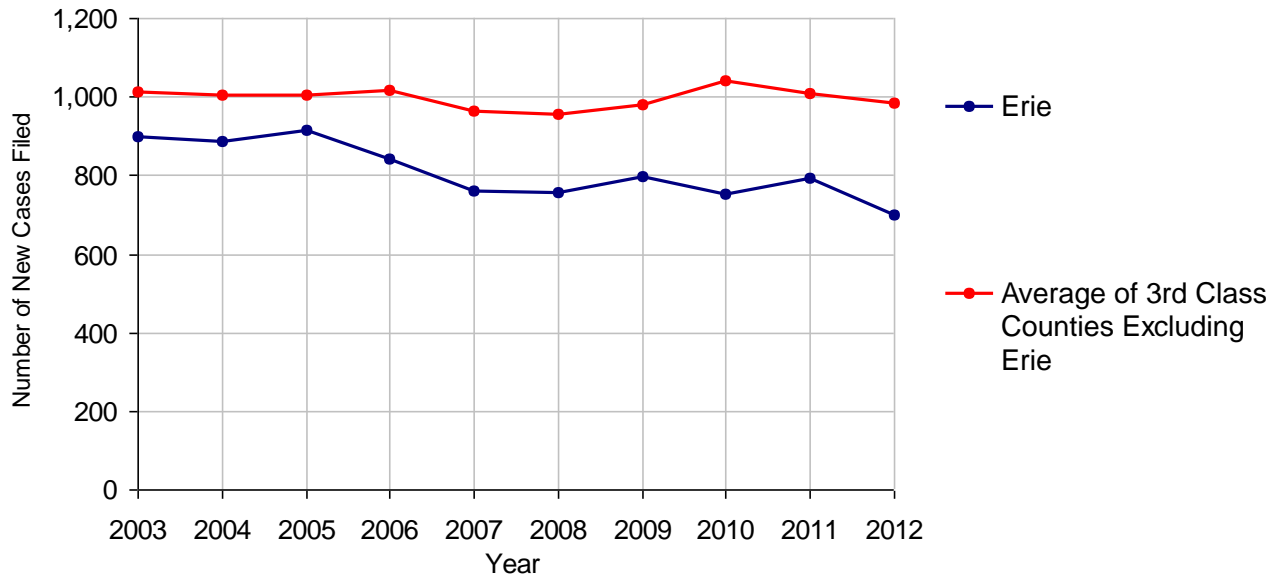
# Erie County

2012 Population Estimate: 280,646  
 Class of County: 3rd  
 No. of Common Pleas Court Judgeships: 9



<b>2012 Divorce</b>	<b>No. of Petitions</b>	
Cases Pending 1/1/2012	177	
New Cases Filed in 2012	699	
<b>Cases Available for Processing</b>	<b>876</b>	
Processed By:		
Contested Before a Judge	0	
Contested Before a Master	57	8.0%
Uncontested	658	92.0%
Other	0	
<b>Cases Processed</b>	<b>715</b>	<b>100.0%</b>
<b>Cases Pending 12/31/2012</b>	<b>161</b>	

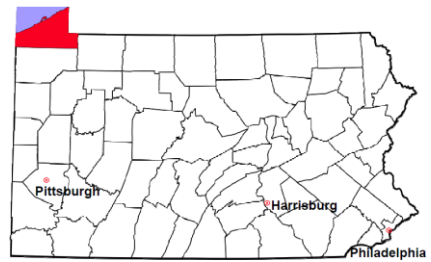
**Divorce New Cases Filed, 2003-2012**





# Erie County

2012 Population Estimate: 280,646  
 Class of County: 3rd  
 No. of Common Pleas Court Judgeships: 9



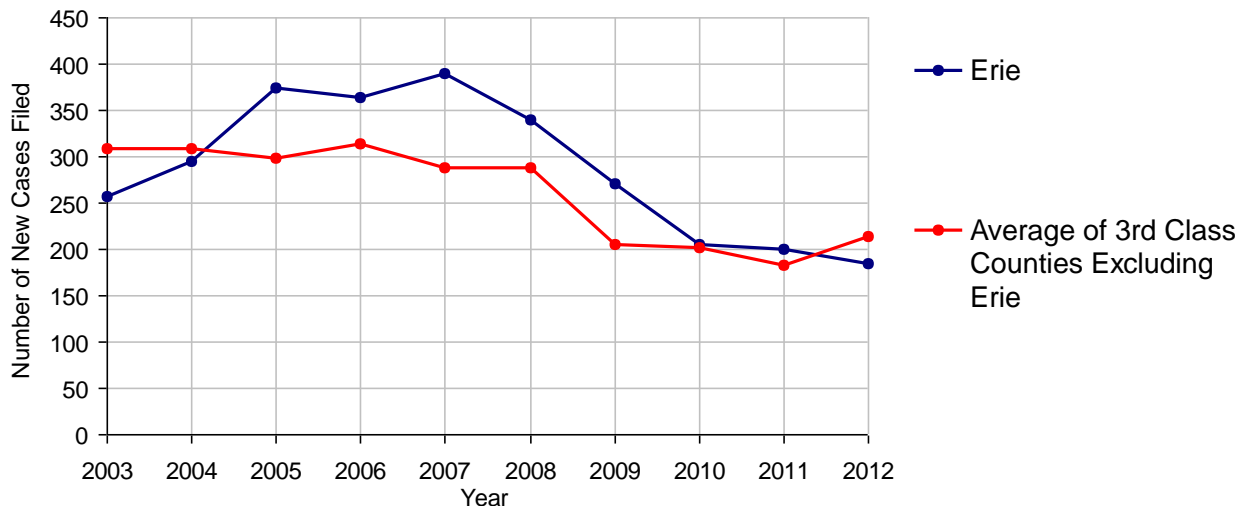
## 2012 Juvenile Dependency - Active Dependent Inventory



	Abuse/ Neglect	Status Offenses	Total
Cases Pending 1/1/2012	6	1	7
New Petitions Filed in 2012	183	1	184
Other	1	0	1
<b>Total Petitions Available for Processing</b>	<b>190</b>	<b>2</b>	<b>192</b>
Processed by:			
Adjudicated Dependent			
Judge	25	0	25
Master	148	2	150
Adjudicated NOT Dependent			
Judge	0	0	0
Master	7	0	7
Withdrawn/Dismissed/Inactive	0	0	0
Other	5	0	5
<b>Total Petitions Processed</b>	<b>185</b>	<b>2</b>	<b>187</b>
<b>Cases Pending 12/31/2012</b>	<b>5</b>	<b>0</b>	<b>5</b>

Data provided by CPCMS

Abuse/Neglect and Status Offenses New Cases Filed, 2003-2012



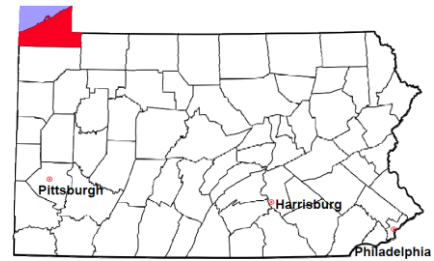
Note: Dependency data for 2002-2010 were collected manually. Dependency data for 2011 and 2012 were provided by CPCMS.

# Erie County

2012 Population Estimate: 280,646

Class of County: 3rd

No. of Common Pleas Court Judgeships: 9



## 2012 Juvenile Dependency - Adjudicated Dependent Inventory



	Abuse/ Neglect	Status Offenses	Total
Cases Pending 1/1/2012	315	3	318
New Adjudicated Dependent Cases	173	2	175
Other	3	0	3
<b>Total Adjudicated Dependent Cases</b>	<b>491</b>	<b>5</b>	<b>496</b>

### Court Supervision Terminated:

Family Reunification	23	15.2%	0	23	14.9%
Adoption	30	19.9%	1	31	20.1%
Placement with a Relative/Guardian	70	46.4%	0	70	45.5%
Aged Out	24	15.9%	2	26	16.9%
Other Permanency Outcomes*	3	2.0%	0	3	1.9%
Other**	1	0.7%	0	1	0.6%
<b>Total Adjudicated Dependent Cases Terminated</b>	<b>151</b>	<b>100.0%</b>	<b>3</b>	<b>154</b>	<b>100.0%</b>
<b>Cases Pending 12/31/2012</b>	<b>340</b>		<b>2</b>	<b>342</b>	

Data provided by CPCMS

\* Other Permanency Outcomes include: adjudicated delinquent, death due to natural causes, death due to negligence, emancipation, permanent living arrangement, and parent has come forward.

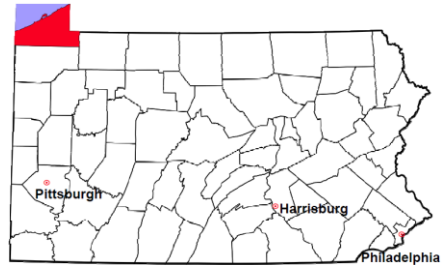
\*\* Other includes cases where court supervision is terminated due to transfer out of jurisdiction, withdrawal and administrative closure.

# Erie County

2012 Population Estimate: 280,646

Class of County: 3rd

No. of Common Pleas Court Judgeships: 9



## 2012 Juvenile Delinquency

**No. of Cases**

Cases Pending 1/1/2012 397

New Cases Filed in 2012 696

**Cases Available for Processing 1,093**

Processed By:

Judge 454 58.9%

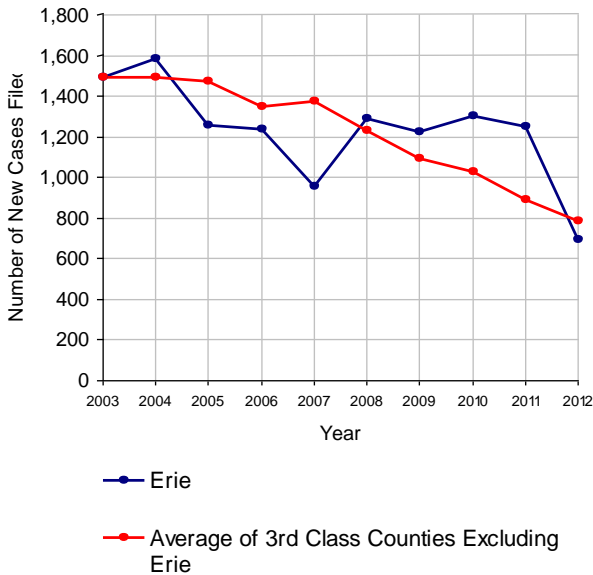
Non-Judicial Officer 228 29.6%

Other 89 11.5%

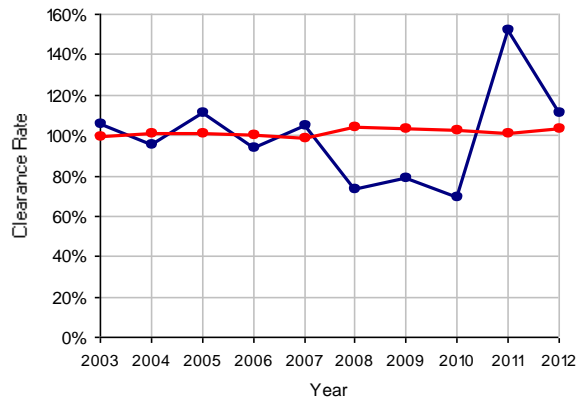
**Cases Processed 771 100.0%**

**Cases Pending 12/31/2012 322**

Juvenile Delinquency New Cases Filed, 2003-2012

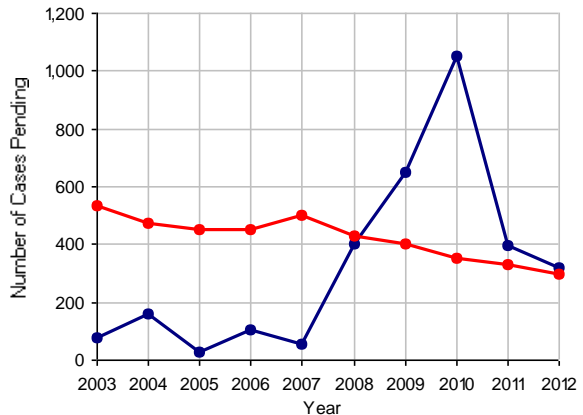


Clearance Rate, 2003-2012



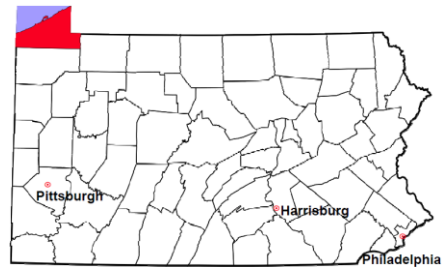
Note: Clearance Rate = Cases Processed / New Cases Filed

Cases Pending at the End of Year, 2003-2012



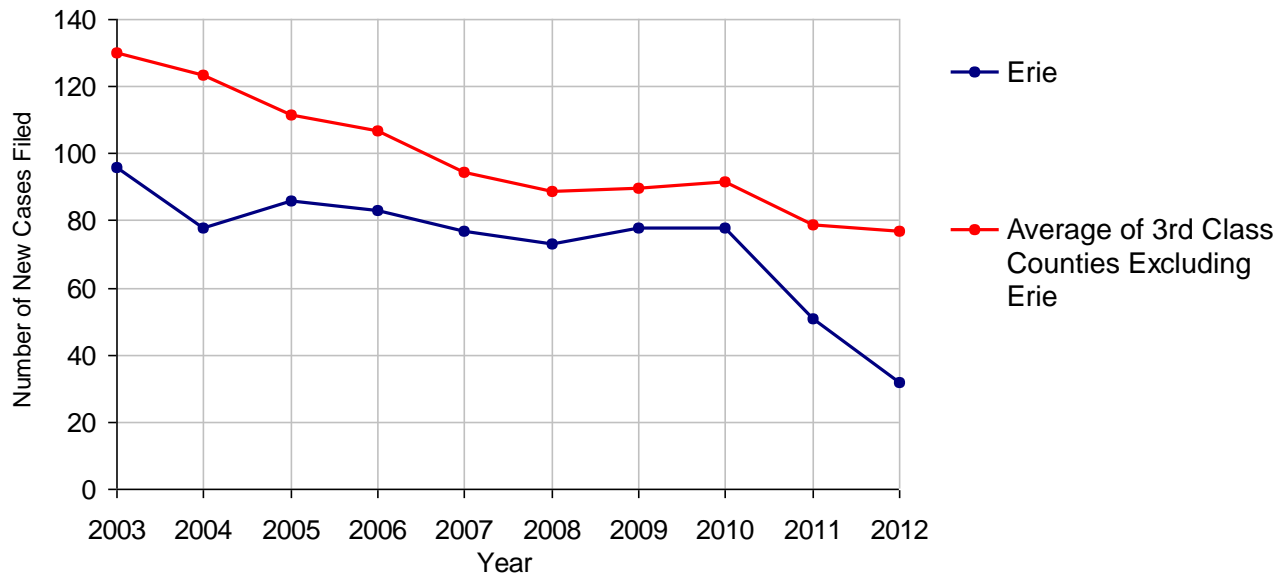
# Erie County

2012 Population Estimate: 280,646  
 Class of County: 3rd  
 No. of Common Pleas Court Judgeships: 9



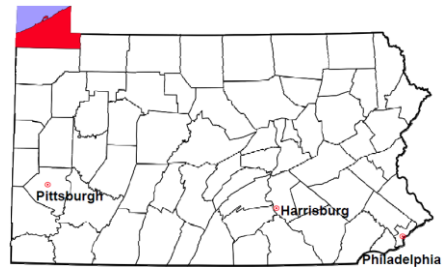
<b>2012 Accounts</b>	<b>No. of Cases</b>	
Cases Pending 1/1/2012	27	
New Cases Filed in 2012	32	
<b>Cases Available for Processing</b>	<b>59</b>	
Processed By:		
Contested before a Judge	0	
Contested before a Non-judicial Officer	0	
Uncontested	45	93.8%
Other	3	6.3%
<b>Cases Processed</b>	<b>48</b>	<b>100.0%</b>
<b>Cases Pending 12/31/2012</b>	<b>11</b>	

**Accounts New Cases Filed, 2003-2012**



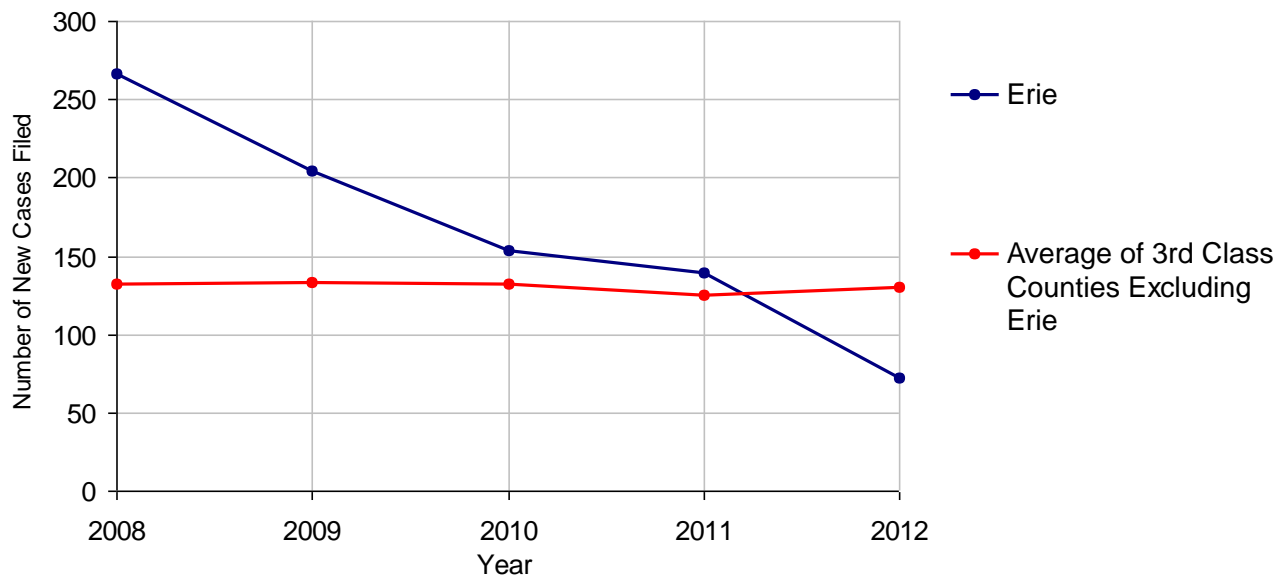
# Erie County

2012 Population Estimate: 280,646  
 Class of County: 3rd  
 No. of Common Pleas Court Judgeships: 9



<b>2012 Adoptions</b>		<b>No. of Cases</b>	
Cases Pending 1/1/2012		62	
New Cases Filed in 2012		72	
<b>Cases Available for Processing</b>		<b>134</b>	
Processed By:			
Contested before a Judge	Granted	0	
	Denied	0	
Uncontested	Granted	65	100.0%
	Denied	0	
Other		0	
<b>Cases Processed</b>		<b>65</b>	<b>100.0%</b>
<b>Cases Pending 12/31/2012</b>		<b>69</b>	

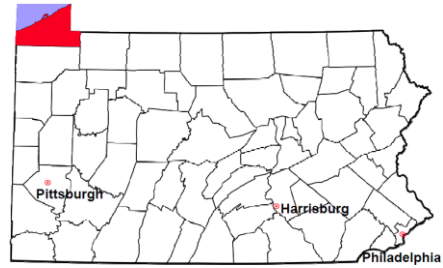
**Adoptions New Cases Filed, 2008-2012**



Note: Prior to 2008, each petition was counted as one new case, regardless of the number of children listed on the petition. Starting in 2008, each child listed on a petition is counted as a separate case. Therefore, statistics since 2008 should not be compared to statistics prior to 2008.

# Erie County

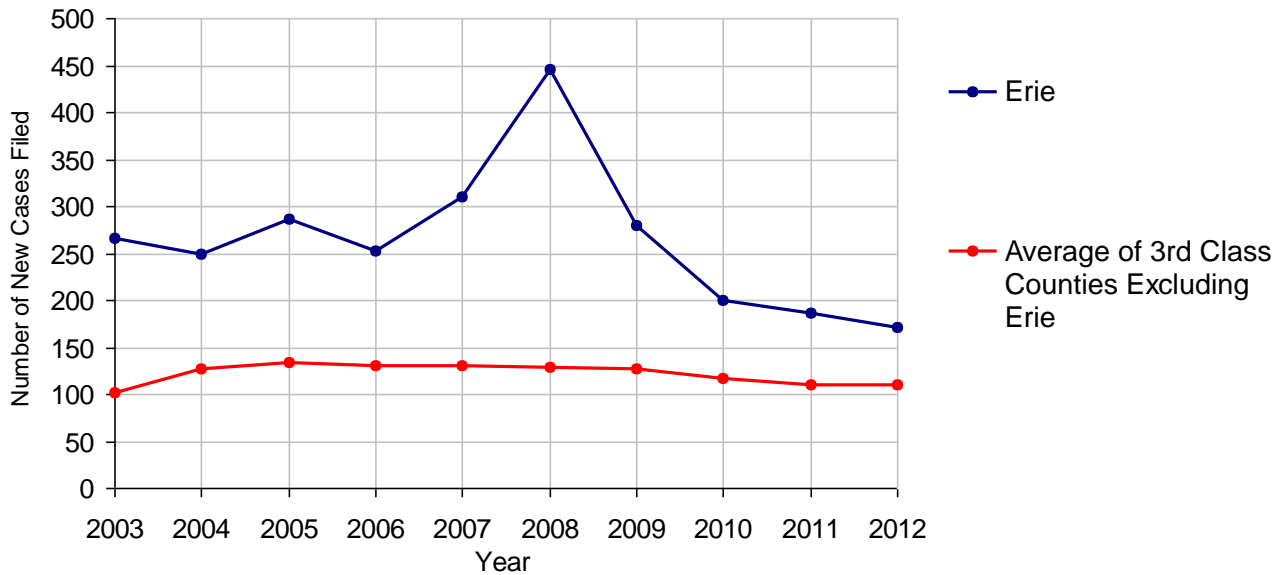
2012 Population Estimate: 280,646  
 Class of County: 3rd  
 No. of Common Pleas Court Judgeships: 9



## 2012 Relinquishments/Terminations

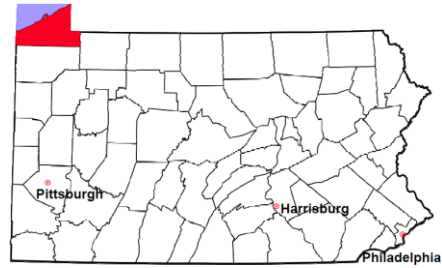
	No. of Cases
Cases Pending 1/1/2012	104
New Cases Filed in 2012	171
<b>Cases Available for Processing</b>	<b>275</b>
Processed By:	
Contested before a Judge	21 13.6%
Uncontested	133 86.4%
Other	0
<b>Cases Processed</b>	<b>154 100.0%</b>
<b>Cases Pending 12/31/2012</b>	<b>121</b>

Relinquishments/Terminations New Cases Filed, 2003-2012



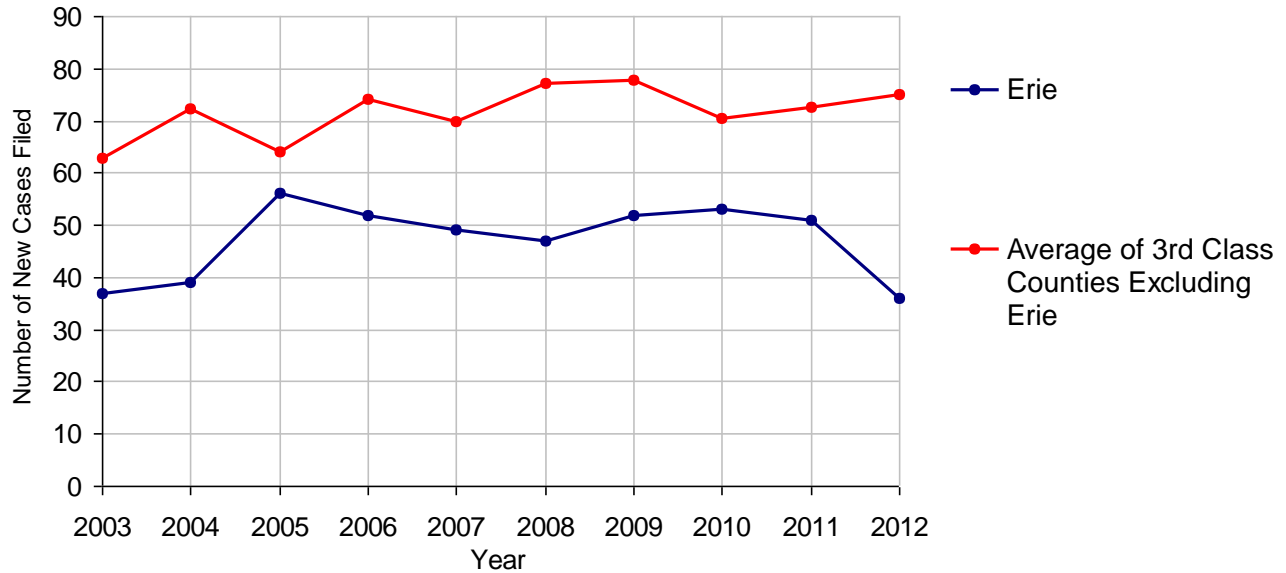
# Erie County

2012 Population Estimate: 280,646  
 Class of County: 3rd  
 No. of Common Pleas Court Judgeships: 9



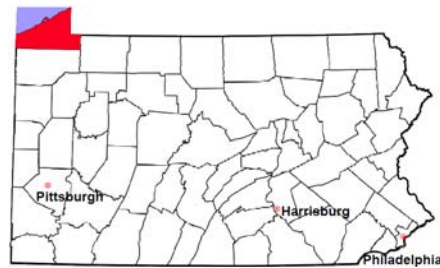
<b>2012 Appointment of Guardians</b>	<b>No. of Cases</b>
Cases Pending 1/1/2012	4
New Cases Filed in 2012	36
<b>Cases Available for Processing</b>	<b>40</b>
Processed By:	
Contested before a Judge	4    10.8%
Uncontested	31    83.8%
Other	2    5.4%
<b>Cases Processed</b>	<b>37    100.0%</b>
<b>Cases Pending 12/31/2012</b>	<b>3</b>

**Appointment of Guardians New Cases Filed, 2003-2012**



# Erie County

2012 Population Estimate: 280,646  
 Class of County: 3rd  
 No. of Common Pleas Court Judgeships: 9



## 2012 Jury Yield and Utilization

### Jury Yield

Qualification Questionnaires/Summonses Mailed:	31,704	A		
Returned Undeliverable:	4,213	B	13.3%	Of Qualification Questionnaires/Summonses Mailed
Not Responded to:	3,804	C	12.0%	
the Number of Prospective Jurors:				
Disqualified:	3,794	D	12.0%	
Exempted:	587	E	1.9%	
Excused:	3,473	F	11.0%	
Deferred to New Term:	2,826	G	8.9%	
Deferred from Previous Term:	3,952	H	12.5%	
<b>Total Number of Qualified Jurors Available for Service:</b>	<b>16,959</b>	<b>I</b>	<b>53.5%</b>	

*I=A-B-C-D-E-F-G+H*

### Jury Utilization

the Number of Jurors:				
Reporting for Service:	6,530		38.5%	Of Jurors Qualified and Available
Told Not to Report for Service:	5,121		30.2%	
Sent to Courtroom for Jury Selection (Voir Dire):	9,689		148.4%	Of Jurors Reporting for Service
Impanelled or Sworn (jurors/alternates):	2,353		36.0%	
Removed for Cause/Hardship:	1,358			
Removed by Peremptory Challenge:	1,057			

### Jury Costs

Total Annual Budget for Juror Operations:	\$204,777.00	J
Average Cost Per Juror:	\$6.46	K

*K=J/A*

In mid-2011, AOPC began utilizing the National Center for State Courts' Jury Managers' Toolbox for collecting jury data. In 2012, the counties began providing additional jury data which included information about the summoning practices in the counties. With this additional data, we can now see not only how many citizens come to our courthouses every day in anticipation of serving on a jury, but the number of citizens actually summoned and the number of those summonsed who are exempt, excused or disqualified from service. With this wider view of the jury process, we can determine the efficiency with which our courts operate, and with the assistance of the Jury Managers' Toolbox find guidance in streamlining the jury summoning practices.