

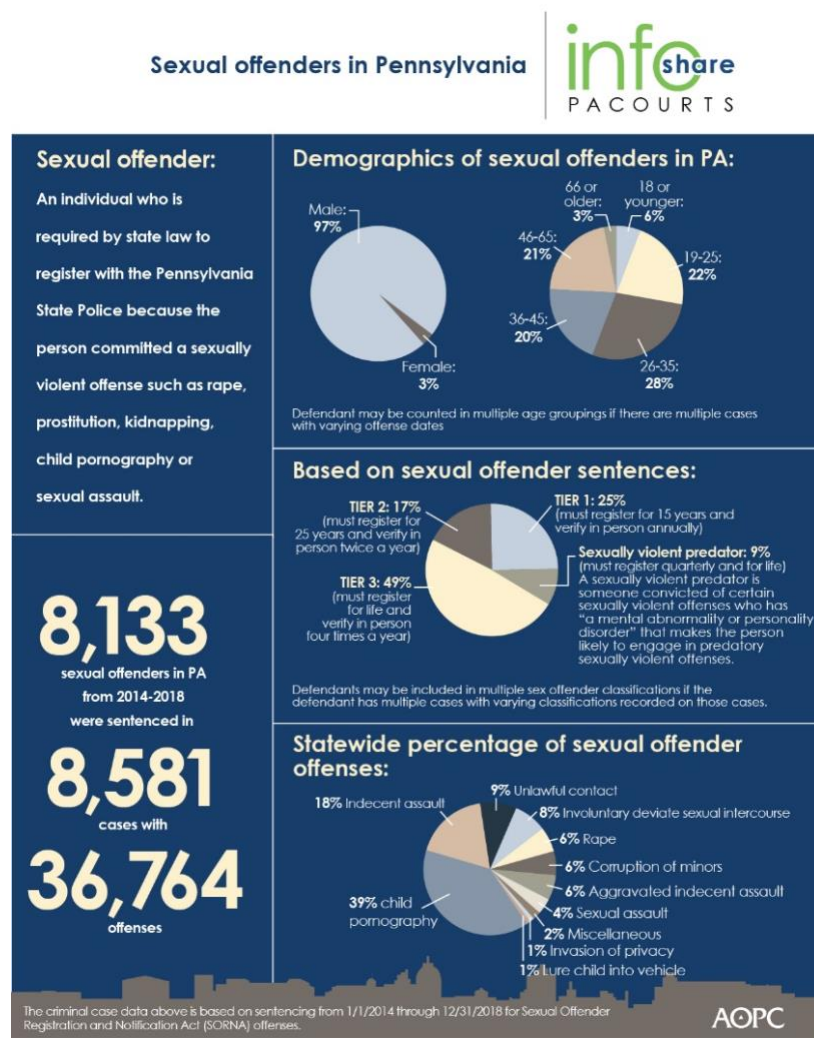
Infographic for Immediate Release

Aug. 23, 2019

A snapshot of sexual offenders in Pennsylvania

HARRISBURG—Under Pennsylvania’s Sexual Offender Registration and Notification Act (SORNA), **8,133 people** were sentenced as sexual offenders between 2014 to 2018, and were charged with 36,764 offenses. Of those sexual offenders who were sentenced, 50% were between the ages of 19-35, and 39% were charged with child pornography.

The infographic below highlights key data and demographics about sexual offenders in Pennsylvania. [Download a high-resolution version](#) of the graphic.



PA Courts InfoShare is a monthly product of the Administrative Office of Pennsylvania Courts (AOPC) that visually highlights the work of the courts with interesting data and statistics obtained through the judiciary's case management systems, interactive dashboards and other research. Reproduction is permissible with source cited.

Editor's Note:

County-level numbers of criminal cases sentenced from 1/1/2014 through 12/31/2018 for a SORNA offense; Grouped by County

County	2014	2015	2016	2017	2018	Grand Total	Percentage of Total
Adams	9	17	20	27	16	89	1.04%
Allegheny	141	144	156	130	170	741	8.64%
Armstrong	4	10	8	7	10	39	0.45%
Beaver	13	13	14	21	19	80	0.93%
Bedford	5	12	12	10	18	57	0.66%
Berks	44	57	51	53	42	247	2.88%
Blair	20	23	28	21	22	114	1.33%
Bradford	21	17	10	13	16	77	0.90%
Bucks	40	52	40	64	45	241	2.81%
Butler	16	14	14	6	11	61	0.71%
Cambria	22	12	19	15	21	89	1.04%
Cameron	0	2	3	1	2	8	0.09%
Carbon	9	12	20	20	12	73	0.85%
Centre	10	22	17	12	20	81	0.94%
Chester	29	41	52	57	55	234	2.73%
Clarion	5	3	8	7	13	36	0.42%
Clearfield	10	8	13	10	9	50	0.58%
Clinton	4	11	2	6	8	31	0.36%
Columbia	7	4	8	12	2	33	0.38%
Crawford	15	17	22	16	20	90	1.05%
Cumberland	30	32	30	27	32	151	1.76%
Dauphin	60	54	64	69	80	327	3.81%
Delaware	75	76	57	73	60	341	3.97%
Elk	4	5	1	4	4	18	0.21%
Erie	44	29	32	32	35	172	2.00%
Fayette	46	19	12	29	24	130	1.51%
Forest	1	2	0	1	2	6	0.07%
Franklin	23	31	27	32	31	144	1.68%
Fulton	2	8	2	4	3	19	0.22%
Greene	6	5	18	6	1	36	0.42%
Huntingdon	8	9	10	8	14	49	0.57%
Indiana	12	12	6	9	12	51	0.59%
Jefferson	7	8	13	14	12	54	0.63%

Juniata	3	4	8	2	6	23	0.27%
Lackawanna	20	32	26	38	26	142	1.65%
Lancaster	56	76	131	100	94	457	5.33%
Lawrence	9	6	12	7	17	51	0.59%
Lebanon	26	35	38	26	32	157	1.83%
Lehigh	16	26	19	29	24	114	1.33%
Luzerne	39	48	38	40	60	225	2.62%
Lycoming	12	15	20	13	15	75	0.87%
McKean	16	4	6	13	4	43	0.50%
Mercer	19	18	18	30	33	118	1.38%
Mifflin	5	5	2	15	8	35	0.41%
Monroe	31	26	33	29	25	144	1.68%
Montgomery	51	67	77	71	74	340	3.96%
Montour	0	2	3	2	6	13	0.15%
Northampton	22	22	27	39	29	139	1.62%
Northumberland	8	29	7	18	10	72	0.84%
Perry	11	5	5	9	7	37	0.43%
Philadelphia	230	210	219	312	339	1,310	15.27%
Pike	7	7	3	6	6	29	0.34%
Potter	7	5	9	0	7	28	0.33%
Schuylkill	10	26	10	21	18	85	0.99%
Snyder	4	3	3	2	7	19	0.22%
Somerset	11	9	8	3	10	41	0.48%
Sullivan	0	0	1	0	0	1	0.01%
Susquehanna	10	5	4	2	3	24	0.28%
Tioga	6	5	2	4	12	29	0.34%
Union	4	4	11	5	4	28	0.33%
Venango	6	10	13	14	16	59	0.69%
Warren	13	13	9	9	7	51	0.59%
Washington	12	37	20	16	26	111	1.29%
Wayne	5	8	4	8	5	30	0.35%
Westmoreland	29	37	35	75	40	216	2.52%
Wyoming	4	3	12	3	6	28	0.33%
York	52	49	79	77	81	338	3.94%
Grand Total	1,496	1,632	1,701	1,854	1,898	8,581	



##

Media contact: Kimberly Bathgate, 717-231-3331