

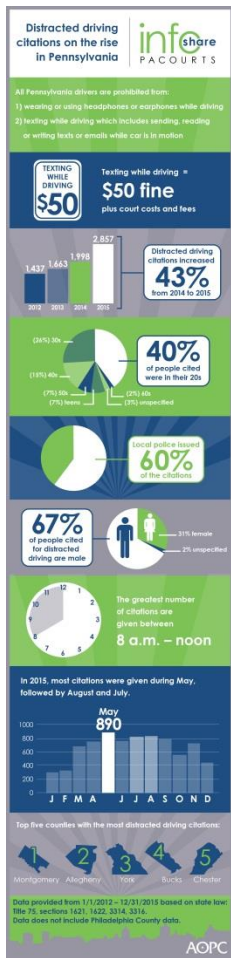
Infographic for Immediate Release

April 1, 2016

Distracted driving citations on the rise in Pennsylvania

HARRISBURG— Distracted driving citations **increased by 43%** statewide between 2014 and 2015 – with more men being cited (67%) than women (31%). In Pennsylvania, all drivers are prohibited from texting while driving which includes sending, reading or writing a text-based message or e-mail, and from wearing or using headphones or earphones while the car is in motion.

Data is based on the following state law: Title 75, sections 1621, 1622, 3316 (texting), and 3314 (headphones). The infographic below highlights key data and demographics about distracted drivers in Pennsylvania with the exception of Philadelphia County (data maintained by Philadelphia Municipal Court, traffic division). Or [download a high-resolution file](#) of the graphic.



PA Courts InfoShare is a bi-weekly product of the Administrative Office of Pennsylvania Courts (AOPC) that visually highlights the work of the courts with interesting data and statistics obtained through the judiciary's case management systems, interactive dashboards and other research. Reproduction is permissible with source cited.



Editor's Note:

County-level detail is below with the exception of Philadelphia County (data maintained by Philadelphia Municipal Court, traffic division).

By County	2012	2013	2014	2015	Grand Total
Montgomery	183	175	223	298	879
Allegheny	126	165	176	235	702
York	77	97	130	223	527
Bucks	106	113	117	183	519
Chester	70	120	130	166	486
Delaware	84	80	128	116	408
Berks	40	55	87	132	314
Lancaster	46	54	54	122	276
Cumberland	42	39	63	119	263
Lehigh	42	49	62	73	226
Centre	25	46	92	55	218
Westmoreland	37	51	53	75	216
Dauphin	32	45	55	68	200
Lackawanna	32	19	32	115	198
Luzerne	43	42	40	57	182
Northampton	27	32	48	71	178
Washington	26	42	43	59	170
Monroe	14	25	33	42	114
Franklin	17	28	20	30	95
Butler	16	20	12	43	91
Erie	21	27	13	30	91
Lycoming	24	26	12	18	80
Lebanon	12	18	23	22	75
Adams	12	16	18	26	72
Cambria	20	13	19	17	69
Bedford	7	14	21	24	66
Clearfield	13	15	17	18	63
Fayette	14	11	17	17	59
Columbia	13	8	16	19	56

Somerset	18	11	14	12	55
Beaver	11	10	10	22	53
Snyder	6	10	7	30	53
Blair	12	9	12	18	51
Lawrence	8	12	11	16	47
Schuylkill	13	6	12	16	47
Carbon	9	6	13	16	44
Venango	5	13	5	21	44
Mercer	9	6	12	15	42
Northumberland	8	9	8	17	42
Clarion	7	9	5	17	38
Susquehanna	12	9	7	10	38
Indiana	8	9	8	10	35
Armstrong	7	10	6	11	34
Crawford	9	2	5	18	34
Bradford	7	5	11	10	33
Perry	9	10	6	8	33
Union	7	7	9	10	33
Clinton	8	5	5	10	28
Fulton	1	4	13	10	28
Pike	4	6	9	8	27
Juniata	3	4	4	14	25
Tioga	5	5	7	7	24
Mifflin	5	6	7	4	22
Greene	4	6	2	8	20
Potter	0	9	4	7	20
Warren	2	4	3	10	19
Jefferson	2	3	7	3	15
Wayne	1	3	8	3	15
Huntingdon	4	1	4	5	14
Montour	2	1	3	8	14
Wyoming	4	4	1	5	14
McKean	3	1	2	2	8
Elk	3	1	1	1	6
Sullivan	0	0	1	2	3
Cameron	0	2	0	0	2
Forest	0	0	2	0	2
Grand Total	1437	1663	1998	2857	7955

##

Media contact: Kimberly Bathgate, 717-231-3331