

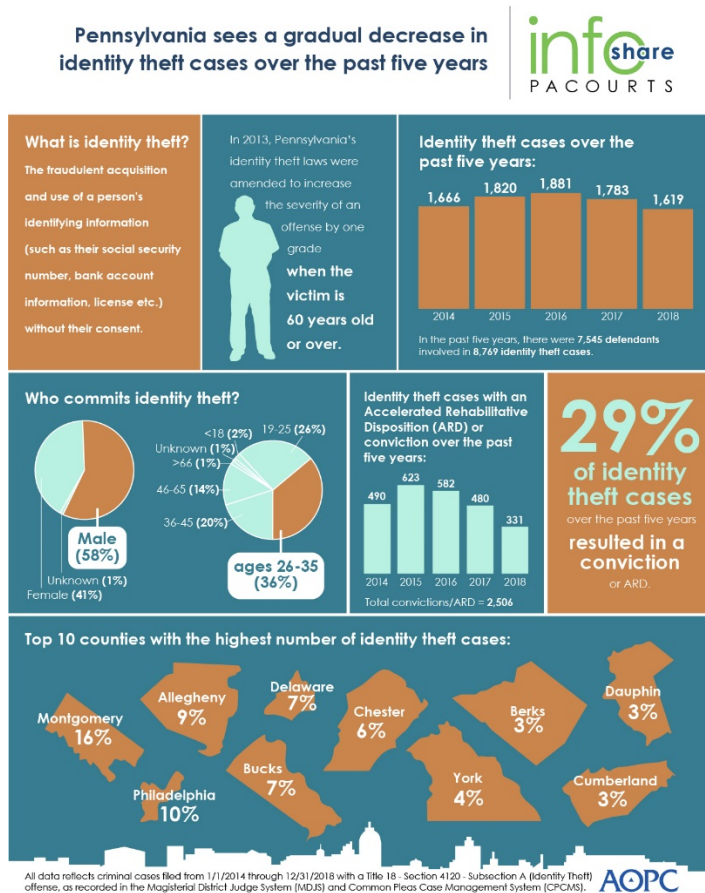
Infographic for Immediate Release
June 7, 2019

Pennsylvania identity theft case trends

HARRISBURG – Over the last five years, Pennsylvania has seen a gradual decrease in identity theft cases. Identity theft is defined as the fraudulent use of another person’s identifying information (social security number, bank account, birth certificate etc.).

The infographic below highlights key data including defendant demographics, identity theft case counts and outcomes as well as county-level data where identity theft is most prevalent (also see editor’s note).

A high-resolution file of the graphic is available for download at www.pacourts.us under [Media Resources](#).



PA Courts InfoShare is a monthly product of the Administrative Office of Pennsylvania Courts (AOPC) that visually highlights the work of the courts with interesting data and statistics obtained through the judiciary's case management systems, interactive dashboards and other research. Reproduction is encouraged with source cited.



##

Media contact: [Kim Bathgate](#), 717-231-3331

Editor's note:

Statewide number of criminal cases filed from 1/1/2014 through 12/31/2018 with a Title 18 - Section 4120 - Subsection A (Identity Theft) offense, as recorded in the Magisterial District Judge System (MDJS) and Common Pleas Case Management System (CPCMS)

County	2014	2015	2016	2017	2018	Total	Percentage of Total
Adams	8	6	8	8	8	38	0.43%
Allegheny	150	188	147	137	152	774	8.83%
Armstrong	1	5	12	1	2	21	0.24%
Beaver	15	31	7	12	19	84	0.96%
Bedford	3	4	5	6	2	20	0.23%
Berks	57	46	70	59	64	296	3.38%
Blair	21	21	18	16	13	89	1.01%
Bradford	6	4	3	3	2	18	0.21%
Bucks	115	135	127	147	111	635	7.24%
Butler	34	28	45	27	11	145	1.65%
Cambria	16	17	13	11	2	59	0.67%
Cameron	0	0	0	0	3	3	0.03%
Carbon	13	12	5	22	9	61	0.70%
Centre	15	41	7	19	14	96	1.09%
Chester	76	100	158	96	125	555	6.33%
Clarion	3	4	4	1	4	16	0.18%
Clearfield	1	1	2	1	2	7	0.08%
Clinton	0	0	4	3	2	9	0.10%
Columbia	8	9	10	6	3	36	0.41%
Crawford	4	8	12	6	5	35	0.40%

Cumberland	42	46	36	57	40	221	2.52%
Dauphin	50	53	39	65	50	257	2.93%
Delaware	125	137	121	123	113	619	7.06%
Elk	2	1	5	2	1	11	0.13%
Erie	25	23	19	13	15	95	1.08%
Fayette	9	9	13	12	4	47	0.54%
Forest	0	1	0	0	0	1	0.01%
Franklin	27	18	27	20	15	107	1.22%
Fulton	0	4	4	1	2	11	0.13%
Greene	4	7	5	9	0	25	0.29%
Huntingdon	4	5	6	2	3	20	0.23%
Indiana	3	6	2	9	10	30	0.34%
Jefferson	3	5	3	9	7	27	0.31%
Juniata	2	0	0	2	2	6	0.07%
Lackawanna	16	19	12	25	19	91	1.04%
Lancaster	24	31	26	27	33	141	1.61%
Lawrence	7	5	6	4	6	28	0.32%
Lebanon	25	15	27	16	19	102	1.16%
Lehigh	20	32	29	35	23	139	1.59%
Luzerne	35	17	18	22	28	120	1.37%
Lycoming	15	12	24	8	11	70	0.80%
McKean	3	4	1	2	2	12	0.14%
Mercer	15	10	28	10	11	74	0.84%
Mifflin	1	1	0	0	0	2	0.02%
Monroe	15	11	15	22	19	82	0.94%
Montgomery	257	262	302	311	259	1,391	15.86%
Montour	3	3	2	1	2	11	0.13%
Northampton	21	19	39	31	43	153	1.74%
Northumberland	5	16	11	9	13	54	0.62%
Perry	5	5	6	3	3	22	0.25%
Philadelphia	176	181	203	165	120	845	9.64%
Pike	4	4	6	7	8	29	0.33%
Potter	1	5	1	1	2	10	0.11%
Schuylkill	22	16	16	23	12	89	1.01%
Snyder	2	1	1	6	4	14	0.16%
Somerset	9	4	4	3	7	27	0.31%
Susquehanna	0	4	2	3	4	13	0.15%
Tioga	4	3	5	3	2	17	0.19%
Union	0	0	4	0	11	15	0.17%
Venango	9	10	13	15	9	56	0.64%
Warren	11	3	7	3	0	24	0.27%

Washington	18	24	25	10	20	97	1.11%
Wayne	8	4	3	5	1	21	0.24%
Westmoreland	34	49	51	40	43	217	2.47%
Wyoming	7	3	1	3	3	17	0.19%
York	52	72	56	65	67	312	3.56%
Grand Total	1,666	1,820	1,881	1,783	1,619	8,769	N/A

Total cases with an ARD or Conviction	2014	2015	2016	2017	2018	Total
ARD Only	110	140	97	98	80	525
Convictions Only	380	483	485	382	251	1,981
Total: ARD + Convictions	490	623	582	480	331	2,506

Percentage of cases with an ARD or Conviction	2014	2015	2016	2017	2018	Total
ARD Only	6.60%	7.69%	5.16%	5.50%	4.94%	5.99%
Convictions Only	22.81%	26.54%	25.78%	21.42%	15.50%	22.59%
Total: ARD + Convictions	29.41%	34.23%	30.94%	26.92%	20.44%	28.58%