

Infographic for Immediate Release

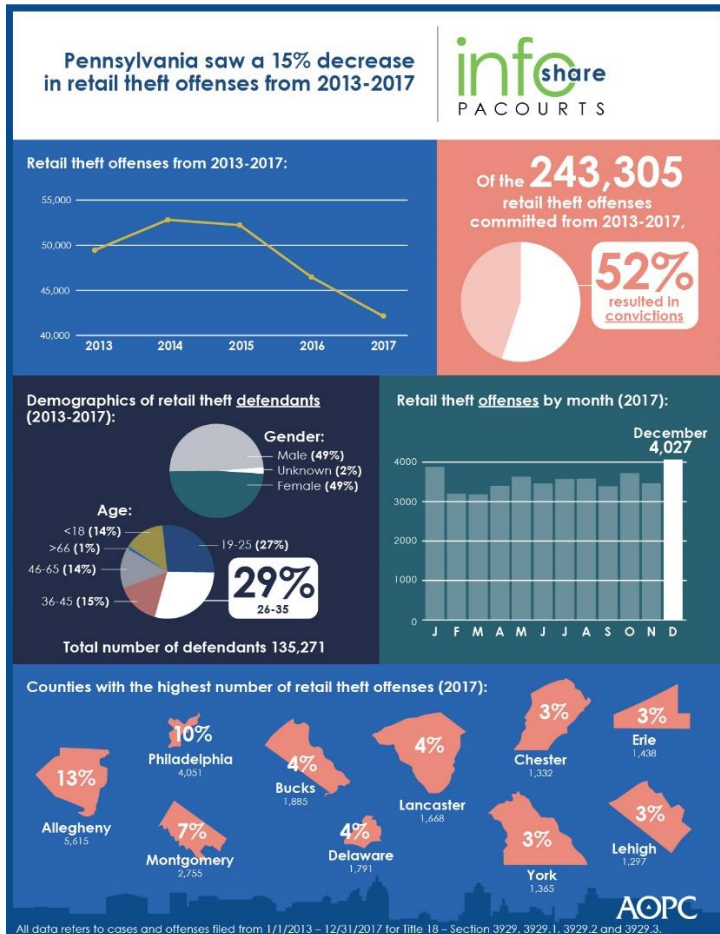
Dec. 14, 2018

Pennsylvania retail theft offenses decreased over past five years

HARRISBURG — Pennsylvania retail theft offenses are at a five-year low, having decreased 15 percent since 2013.

The infographic highlights retail theft data from 2013 to 2017 including the statewide number of retail theft offenses by month, the top 10 counties with the highest number of retail theft offenses and statewide defendant demographics.

A high-resolution file of the graphic is available for download at www.pacourts.us under [Media Resources](#). County numbers included at end of release.



PA Courts InfoShare is a monthly product of the Administrative Office of Pennsylvania Courts (AOPC) that visually highlights the work of the courts with interesting data and statistics obtained through the judiciary's case management systems, interactive dashboards and other research. Reproduction is permissible with source cited.



##

Media contact: [Kimberly Bathgate](#), 717-231-3331

Editor's Note: County-by-county retail theft data including cases, offense counts by county below.

Statewide number of offenses filed from 1/1/2013 through 12/31/2017 for Title 18 - Sections 3929, 3929.1, 3929.2, and 3929.3, as recorded in the Magisterial District Judge System (MDJS) and Common Pleas Case Management System (CPCMS); Grouped by County and Section							
County / Section	2013	2014	2015	2016	2017	Total	Percentage of Total
Adams	88	134	104	55	78	459	0.19%
3929	88	134	104	55	78	459	0.19%
Allegheny	5851	7266	7623	6770	5615	33125	13.61%
3929	5847	7263	7571	6727	5566	32974	13.55%
3929.1	1	1	3	1		6	0.00%
3929.2	3	2	5	1	7	18	0.01%
3929.3			44	41	42	127	0.05%
Armstrong	131	185	170	114	126	726	0.30%
3929	126	185	170	114	126	721	0.30%
3929.1	5					5	0.00%
Beaver	786	841	1097	812	880	4416	1.82%
3929	786	841	1088	812	878	4405	1.81%
3929.1					1	1	0.00%
3929.3			9		1	10	0.00%
Bedford	67	66	105	67	56	361	0.15%
3929	67	66	105	67	56	361	0.15%
Berks	1854	1809	1506	1202	1103	7474	3.07%
3929	1849	1748	1501	1201	1099	7398	3.04%
3929.1		31	1			32	0.01%
3929.2	2	28	2	1	1	34	0.01%
3929.3	3	2	2		3	10	0.00%

Blair	717	699	803	584	599	3402	1.40%
3929	716	699	803	584	599	3401	1.40%
3929.2	1					1	0.00%
Bradford	117	143	176	191	218	845	0.35%
3929	117	143	176	191	218	845	0.35%
Bucks	2210	2258	2465	2331	1885	11149	4.58%
3929	2205	2252	2456	2312	1885	11110	4.57%
3929.1			2	2		4	0.00%
3929.2	1	4	1	6		12	0.00%
3929.3	4	2	6	11		23	0.01%
Butler	767	985	1108	931	853	4644	1.91%
3929	738	964	1081	929	853	4565	1.88%
3929.2	1					1	0.00%
3929.3	28	21	27	2		78	0.03%
Cambria	743	880	760	598	595	3576	1.47%
3929	743	880	760	598	595	3576	1.47%
Cameron	5	4	3	14	9	35	0.01%
3929	5	4	3	14	9	35	0.01%
Carbon	239	175	224	195	208	1041	0.43%
3929	239	175	224	195	208	1041	0.43%
Centre	428	331	331	226	264	1580	0.65%
3929	418	331	331	226	264	1570	0.65%
3929.3	10					10	0.00%
Chester	1344	1875	1572	1739	1332	7862	3.23%
3929	1331	1871	1570	1736	1319	7827	3.22%
3929.1				1	1	2	0.00%
3929.2	13		2	2	10	27	0.01%
3929.3		4			2	6	0.00%
Clarion	156	125	215	67	50	613	0.25%
3929	156	125	215	67	50	613	0.25%
Clearfield	355	274	272	228	273	1402	0.58%
3929	355	273	270	228	273	1399	0.57%
3929.1		1				1	0.00%
3929.3			2			2	0.00%
Clinton	129	160	142	121	83	635	0.26%
3929	129	160	142	121	83	635	0.26%
Columbia	145	241	210	155	196	947	0.39%
3929	145	241	210	155	196	947	0.39%
Crawford	229	229	171	138	125	892	0.37%
3929	229	229	171	138	125	892	0.37%
Cumberland	1166	1367	1125	1195	1019	5872	2.41%

3929	1166	1367	1123	1195	1019	5870	2.41%
3929.1			1			1	0.00%
3929.3			1			1	0.00%
Dauphin	1346	1564	1279	1093	1344	6626	2.72%
3929	1346	1555	1278	1085	1341	6605	2.71%
3929.1				1		1	0.00%
3929.2		1	1	6	3	11	0.00%
3929.3		8		1		9	0.00%
Delaware	2250	2112	2017	1904	1791	10074	4.14%
3929	2246	2103	1996	1898	1767	10010	4.11%
3929.1	2					2	0.00%
3929.2	1	1	12	6	24	44	0.02%
3929.3	1	8	9			18	0.01%
Elk	200	147	44	84	159	634	0.26%
3929	200	147	44	84	159	634	0.26%
Erie	1274	1647	2080	1560	1438	7999	3.29%
3929	1273	1647	2080	1560	1436	7996	3.29%
3929.1					2	2	0.00%
3929.2	1					1	0.00%
Fayette	763	507	487	417	593	2767	1.14%
3929	763	507	487	417	593	2767	1.14%
Forest	2	3		1	1	7	0.00%
3929	2	3		1	1	7	0.00%
Franklin	633	913	651	566	491	3254	1.34%
3929	632	912	650	565	491	3250	1.34%
3929.1	1		1	1		3	0.00%
3929.2		1				1	0.00%
Fulton	21	6	13	16	10	66	0.03%
3929	21	6	13	16	10	66	0.03%
Greene	51	49	100	56	35	291	0.12%
3929	51	49	100	56	35	291	0.12%
Huntingdon	85	117	92	63	45	402	0.17%
3929	85	117	92	63	45	402	0.17%
Indiana	370	413	351	427	256	1817	0.75%
3929	370	413	351	427	256	1817	0.75%
Jefferson	207	76	89	50	129	551	0.23%
3929	207	76	89	50	128	550	0.23%
3929.1					1	1	0.00%
Juniata	11	7	6	10	11	45	0.02%
3929	11	7	6	10	11	45	0.02%
Lackawanna	685	772	754	705	602	3518	1.45%

3929	685	772	754	705	601	3517	1.45%
3929.2					1	1	0.00%
Lancaster	1823	1756	1590	1602	1668	8439	3.47%
3929	1823	1756	1586	1594	1660	8419	3.46%
3929.1				1		1	0.00%
3929.2			4			4	0.00%
3929.3				7	8	15	0.01%
Lawrence	453	525	417	266	273	1934	0.79%
3929	453	525	417	266	273	1934	0.79%
Lebanon	506	696	577	462	470	2711	1.11%
3929	506	696	571	462	470	2705	1.11%
3929.3			6			6	0.00%
Lehigh	1836	1673	1506	1373	1297	7685	3.16%
3929	1832	1669	1506	1372	1297	7676	3.15%
3929.1				1		1	0.00%
3929.3	4	4				8	0.00%
Luzerne	1551	1533	1439	1264	1130	6917	2.84%
3929	1550	1533	1439	1264	1130	6916	2.84%
3929.1	1					1	0.00%
Lycoming	499	503	381	370	393	2146	0.88%
3929	499	503	381	369	393	2145	0.88%
3929.3				1		1	0.00%
McKean	79	102	82	111	142	516	0.21%
3929	79	102	82	111	142	516	0.21%
Mercer	838	611	466	518	665	3098	1.27%
3929	837	598	466	518	665	3084	1.27%
3929.2	1					1	0.00%
3929.3		13				13	0.01%
Mifflin	113	117	150	140	77	597	0.25%
3929	113	117	150	140	77	597	0.25%
Monroe	1047	955	1109	723	922	4756	1.95%
3929	1041	952	1109	723	921	4746	1.95%
3929.2					1	1	0.00%
3929.3	6	3				9	0.00%
Montgomery	3308	3713	4223	3379	2755	17378	7.14%
3929	3196	3648	4118	3309	2727	16998	6.99%
3929.1	1					1	0.00%
3929.2	110	56	86	63	26	341	0.14%
3929.3	1	9	19	7	2	38	0.02%
Montour	10	25	15	42	18	110	0.05%
3929	10	25	15	42	18	110	0.05%

Northampton	813	782	644	719	609	3567	1.47%
3929	807	782	643	719	609	3560	1.46%
3929.1	1					1	0.00%
3929.2			1			1	0.00%
3929.3	5					5	0.00%
Northumberland	204	313	222	304	173	1216	0.50%
3929	204	313	222	304	173	1216	0.50%
Perry	30	20	35	23	22	130	0.05%
3929	30	20	35	19	22	126	0.05%
3929.2				4		4	0.00%
Philadelphia	5340	4957	4716	4532	4051	23596	9.70%
3929	5334	4957	4683	4518	4030	23522	9.67%
3929.1					1	1	0.00%
3929.2	3		6	7	2	18	0.01%
3929.3	3		27	7	18	55	0.02%
Pike	120	166	133	71	68	558	0.23%
3929	120	166	133	71	68	558	0.23%
Potter	9	5	1	7	15	37	0.02%
3929	9	5	1	7	15	37	0.02%
Schuylkill	450	513	477	492	591	2523	1.04%
3929	450	513	477	488	591	2519	1.04%
3929.1				4		4	0.00%
Snyder	166	328	249	259	190	1192	0.49%
3929	166	328	249	259	190	1192	0.49%
Somerset	135	137	231	233	104	840	0.35%
3929	135	137	231	193	104	800	0.33%
3929.3				40		40	0.02%
Sullivan				2	1	3	0.00%
3929				2	1	3	0.00%
Susquehanna	25	37	40	31	31	164	0.07%
3929	25	37	40	31	31	164	0.07%
Tioga	128	68	115	125	64	500	0.21%
3929	128	68	115	125	64	500	0.21%
Union	144	185	218	130	204	881	0.36%
3929	144	185	218	130	204	881	0.36%
Venango	172	149	143	126	132	722	0.30%
3929	172	149	143	126	132	722	0.30%
Warren	152	69	305	168	103	797	0.33%
3929	152	69	305	164	103	793	0.33%
3929.1				1		1	0.00%
3929.3				3		3	0.00%

Washington	657	828	904	859	734	3982	1.64%
3929	657	827	904	859	733	3980	1.64%
3929.1					1	1	0.00%
3929.2		1				1	0.00%
Wayne	92	109	116	99	67	483	0.20%
3929	92	109	116	98	67	482	0.20%
3929.2				1		1	0.00%
Westmoreland	1570	1814	1481	1457	1302	7624	3.13%
3929	1563	1814	1481	1457	1300	7615	3.13%
3929.1	7					7	0.00%
3929.2					2	2	0.00%
Wyoming	105	71	99	101	50	426	0.18%
3929	105	71	99	101	50	426	0.18%
York	1712	1733	2054	1806	1365	8670	3.56%
3929	1702	1733	2053	1697	1354	8539	3.51%
3929.3	10		1	109	11	131	0.05%
Grand Total	49512	52873	52283	46479	42158	243305	100.00%