

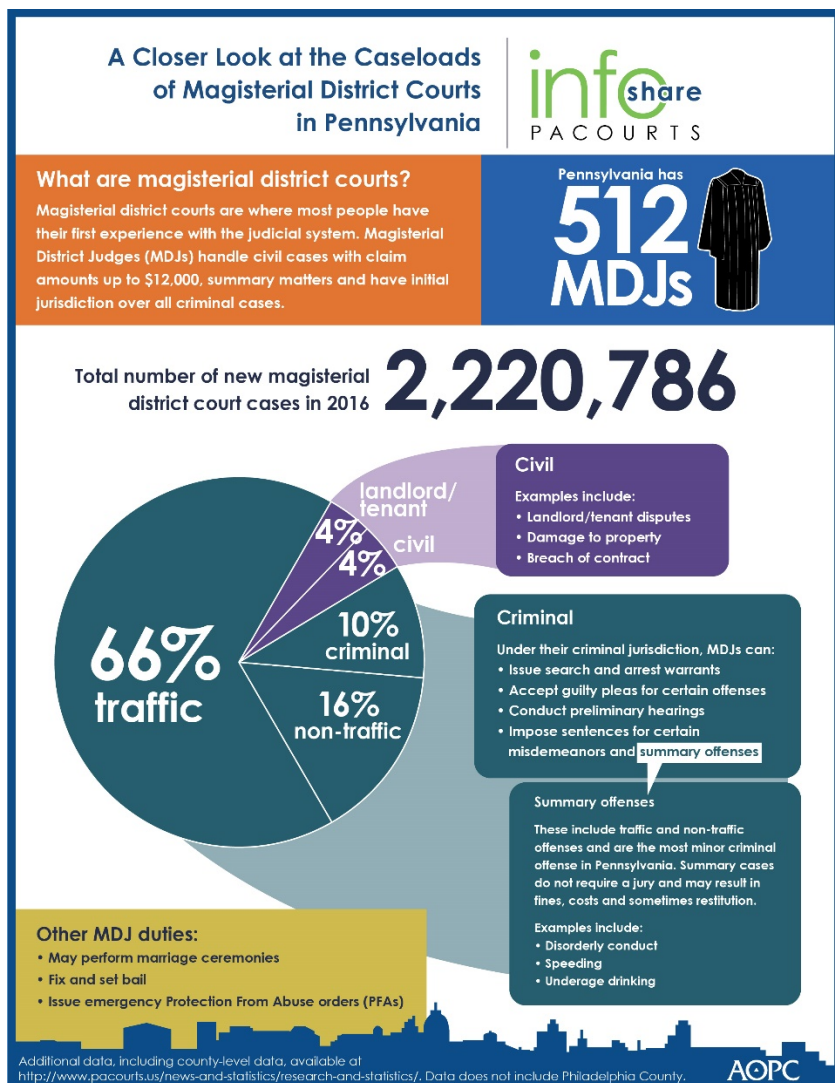
Infographic for Immediate Release

September 14, 2018

Traffic cases account for the majority of Pennsylvania magisterial district court cases in 2016

HARRISBURG — In 2016, **66 percent** of all new cases filed in Pennsylvania magisterial district courts were traffic-related. Magisterial district courts are the first level of the judicial system where magisterial district judges (MDJs) handle minor court cases and matters.

This infographic highlights statewide court case data and provides an educational glance at the specific types of cases that MDJs preside over. A high-resolution file of the graphic is available for download at www.pacourts.us under [Media Resources](#).



PA Courts InfoShare is a monthly product of the Administrative Office of Pennsylvania Courts (AOPC) that visually highlights the work of the courts with interesting data and statistics obtained through the judiciary's case management systems, interactive dashboards and other research. Reproduction is permissible with source cited.



##

Media contact: [Kimberly Bathgate](#), 717-231-3331