

**Proposed Reestablishment Plan for the Magisterial District Courts of the  
29<sup>th</sup> Judicial District, Lycoming County, Pennsylvania**

As required pursuant to constitutional and statutory provisions, reestablishment is a process by which the Supreme Court of Pennsylvania reviews the boundaries of the magisterial districts within each judicial district, except the First Judicial District—Philadelphia County. This review is undertaken in each year following the official reporting of the decennial census figures. The review is based upon reported population figures, case types and filings, case weights, geographic positioning of the magisterial districts, and related issues.

To inform you of this process, and to offer the opportunity for public comment to the proposal, copies of the proposed plan are available for review at the Lycoming County Courthouse, 48 West Third Street, Williamsport, PA 17701, in the Office of the District Court Administrator and in the Law Library. Copies are also available at each Magisterial District Court and the James V. Brown Library, 19 East Fourth Street, Williamsport, PA 17701. Additionally, it may be viewed online at <https://www.lyco.org/Courts>.

All comments to the proposed plan must be in writing and received **no later than February 18, 2022**. Comments specific to the proposed plan will be included with the proposed plan submitted to the Administrative Office of Pennsylvania Courts (AOPC). All comments must be addressed as follows:

Office of the District Court Administrator  
c/o Reestablishment Proposal Comments  
Lycoming County Courthouse  
48 West Third Street  
Williamsport, PA 17701

Comments may also be emailed to [astahl@lyco.org](mailto:astahl@lyco.org) with “Reestablishment Proposal Comments” in the subject line.

## **Summary of Proposed Changes to the Magisterial District Courts of the 29<sup>th</sup> Judicial District, Lycoming County, Pennsylvania**

The 29<sup>th</sup> Judicial District of Pennsylvania is comprised of six magisterial districts. In order to better balance the workloads within those magisterial districts, the following changes in the magisterial district boundaries are being proposed:

- 1) Effective January 1, 2023, Magisterial District 29-1-02 will include Williamsport wards 8 and 9 in addition to the wards within the district's existing boundaries—wards 1, 2, 10, 11, 12, and 13.
- 2) Effective January 1, 2023, Magisterial District 29-1-01 will exclude Williamsport wards 8 and 9. Consequently, Magisterial District 29-1-01 will include wards 3, 4, 5, 6, and 7.
- 3) Effective January 1, 2024, Magisterial District 29-3-04 will include Loyalsock Township precincts 1, 2, and 6 in addition to the municipalities within the district's existing boundaries—Armstrong Township, Cogan House Township, Duboistown Borough, Hepburn Township, Jackson Township, Lewis Township, Loyalsock Township precinct 3, Lycoming Township, McIntyre Township, McNett Township, Old Lycoming Township, and Susquehanna Township. The effective date of this realignment is delayed until January 1, 2024, because the magisterial district judge in Magisterial District 29-3-04 is assisting Magisterial District 29-3-03 during a two-year judicial vacancy (2022 and 2023).
- 4) Effective January 1, 2024, Magisterial District 29-3-02 will exclude Loyalsock Township precincts 1, 2, and 6. Consequently, Magisterial District 29-3-02 will include Cascade Township; Eldred Township; Fairfield Township; Gamble Township; Loyalsock Township precincts 4, 5, and 7; Montoursville Borough; Plunketts Creek Township; South Williamsport Borough; and Upper Fairfield Township. The effective date of this realignment is delayed until January 1, 2024, because the magisterial district judge in Magisterial District 29-3-04 is assisting Magisterial District 29-3-03 during a two-year judicial vacancy (2022 and 2023).

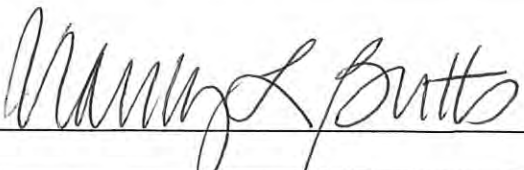
Magisterial Districts 29-3-01 and 29-3-03 will be reestablished with their current jurisdictional boundaries. Lycoming County is at the lower end of the caseload range when compared to other judicial districts in its class; however, Lycoming County is geographically the largest county in the Commonwealth of Pennsylvania. If a magisterial district were to be eliminated, the residents of Lycoming County would be denied adequate access to the courts due to the distance they would be required to travel to court.

Attached is a map of the proposed magisterial district boundaries as well as the Magisterial District Summary Worksheets that will be submitted to the Administrative Office of Pennsylvania Courts (AOPC).

## Judicial District Summary Worksheet – Reestablishment 2021-2022

Start by saving the fillable worksheet template locally on your system as a PDF form. Then, open and complete the worksheet in a PDF browser (not a web browser) to ensure all options and functionality are available. Answer the questions by typing or selecting responses. Press TAB or click on a field to advance. Hover the fields for tips and instructions. Save and upload the completed form to SharePoint. Complete one worksheet or one for each county if you are a joint judicial district.

<b>Judicial District Number:</b>	29	<b>County:</b>	Lycoming	<b>Class of County:</b>	5
<p>1. List the existing magisterial districts in your judicial district (##-#-##):                  29-1-01, 29-1-02, 29-3-01, 29-3-02, 29-3-03, 29-3-04</p>					
<b>Caseload Analysis</b>					
2. Average total caseloads:		<i>Avg for Judicial District</i>		<i>Avg for Class of County</i>	
		A.	3,306	B.	4,119
3. Compare the difference between the caseload average of your judicial district to the class of county.		<i>Difference (2A - 2B)</i>		<i>Ranking</i>	<i>Total</i>
		-813		7th	out of 7
4. Is your judicial district caseload average at the lower end of the caseload range when compared to the other judicial districts in your class of county?				Yes	
<b>Proposed Actions</b>					
5. Are any magisterial districts proposed for reestablishment? If <b>YES</b> , list the magisterial districts proposed for reestablishment (no changes).  29-3-01, 29-3-03					Yes
6. Are any magisterial district proposed for realignment? If <b>YES</b> , list the magisterial districts proposed for realignment (changes).  29-1-01, 29-1-02, 29-3-02, 29-3-04					Yes
7. Are any magisterial districts proposed for elimination? If <b>YES</b> , list the magisterial districts proposed for elimination.					No

<b>Additional Workload Factors</b>	
8. Do you have a night court operating within the judicial district?	No
9. Do you have a central court within your judicial district?	No
10. Do you have any special programs that will entail effort by the MDJs such as truancy programs or drug, DUI, veteran, or mental health diversion programs? If <b>YES</b> , briefly explain the types of programs. All six MDJs conduct truancy programs within their districts.	Yes
<b>Final Checklist</b>	
11. Was a request for public comment posted?	Yes
12. Method of posting - electronic, physical copy, or both?	Both
13. Were media outlets notified?	Yes
14. Were public comments received?	No
15. Did you include a copy of the posting and public comments in your submission?	Yes
16. Did you complete summary worksheets for all magisterial districts?	Yes
17. Did you include your petition and all supporting documentation, if applicable?	Yes
18. Did you confer with the MDJs in your county?	Yes
<b>19. Additional Remarks</b>	
<p>Lycoming County is at the lower end of the caseload range when compared to the other judicial districts in its class; however, Lycoming County is geographically the largest county in the Commonwealth of Pennsylvania. If a magisterial district were to be eliminated, the residents of Lycoming County would be denied adequate access to the courts due to the distance they would be required to travel to court.</p>	
<b>Verification of Submission</b>	
20. Date submitted to AOPC: 2/28/2022	
21. President Judge Name: Nancy L. Butts	
Signature	

## Magisterial District Summary Worksheet - Reestablishment 2021-2022

Start by saving the fillable worksheet template locally on your system as a PDF form. Then, open and complete the worksheets in a PDF browser (not a web browser) to ensure all options and functionality are available. Answer the questions by typing or selecting responses. Press TAB or click on a field to advance. Hover the fields for tips and instructions. Save and upload the completed form to SharePoint.

<b>Magisterial District Court Number:</b>	29-1-01	<b>County:</b>	Lycoming
1. Proposed plan for this magisterial district: <b>Realign</b>		2. Effective date: <b>1/1/2023</b>	
<b>Caseload Analysis</b>			
3. Average total caseloads:	<i>Avg for Magisterial District</i>	<i>Avg for Judicial District</i>	<i>Avg for Class of County</i>
	A. <b>3,121</b>	B. <b>3,306</b>	C. <b>4,119</b>
4. Compare the difference between the caseload average of this magisterial district to your judicial district caseload average.		<i>Difference (3A - 3B)</i>	<i>Ranking Total</i>
		<b>-185</b>	<b>3rd out of 6</b>
5. Compare the difference between the caseload average of this magisterial district to your class of county caseload average.		<i>Difference (3A - 3C)</i>	<i>% Above/Below</i>
		<b>-998</b>	<b>-24 %</b>
<p>6. If this magisterial district is at the lower end of the caseload range <b>and</b> you are proposing to <b>reestablish</b> (no changes), please summarize your response from the plan that explains why you are departing from caseload equity.</p> <p style="margin-left: 40px;">Although this district is at the lower end of the caseload range, this district has the highest workload.</p>			
<b>Workload Analysis</b>			
7. Average total workloads:	<i>Avg for Magisterial District</i>	<i>Avg for Judicial District</i>	
	A. <b>41,236</b>	B. <b>31,135</b>	
8. Compare the difference between the average total workloads of this magisterial district to the judicial district.		<i>Difference (7A - 7B)</i>	<i>% Above/Below</i>
		<b>10,101</b>	<b>32 %</b>
<p>9. If this magisterial district's average workload is fifteen (15%) percent <i>higher or lower than</i> your judicial district average workload <b>and</b> you are proposing to <b>reestablish</b> this magisterial district, please explain (<i>summarize your response from the plan</i>) why this does not result in an unwarranted inequity among the judges.</p>			



**Magisterial District Information**

10. Magisterial District Judge (MDJ) Information:

Christian D. Frey

*Magisterial District Judge Name*

██████████  
*Birthdate*

1/2/28

*Term Expiration Date*

12/31/52

*Mandatory Retirement Date*

11. Magisterial District Court Information - Physical Location:

605 West Fourth Street, Williamsport, PA 17701

12. Is this court within the boundaries of the magisterial district?

Yes

13. Is the MDJ's residence within the boundaries of the magisterial district?

Yes

14. Are all portions of the magisterial district contiguous?

Yes

15. To the best of your knowledge, are there any planned developments such as a mall, highway expansion or gas drilling that will likely cause an increase in the case filings for this office? If **YES**, please summarize your response below.

No/Not Sure

16. List any police departments located within this magisterial district.

Pennsylvania College of Technology, Pennsylvania State Police, Williamsport Bureau of Police

17. List any major highways within this magisterial district.

U.S. Route 220, I-180, U.S. Route 15

18. List the **current** municipalities for this magisterial district (alphabetically). For a list, click [HERE](#) for Realignment Orders submitted in the past.

Williamsport wards 3, 4, 5, 6, 7, 8, 9

19. Are the **proposed** municipalities the same as above? If **NO**, please list all proposed municipalities (alphabetically).

No

Williamsport wards 3, 4, 5, 6, 7

[In summary, this district (29-1-01) is transferring Williamsport wards 8 and 9 to District Court 29-1-02 in an effort to equalize the workloads among the districts.]

**20. Additional Comments:**

## Magisterial District Summary Worksheet - Reestablishment 2021-2022

Start by saving the fillable worksheet template locally on your system as a PDF form. Then, open and complete the worksheets in a PDF browser (not a web browser) to ensure all options and functionality are available. Answer the questions by typing or selecting responses. Press TAB or click on a field to advance. Hover the fields for tips and instructions. Save and upload the completed form to SharePoint.

<b>Magisterial District Court Number:</b>	29-1-02	<b>County:</b>	Lycoming
1. Proposed plan for this magisterial district: <b>Realign</b>		2. Effective date: <b>1/1/2023</b>	
<b>Caseload Analysis</b>			
3. Average total caseloads:	<i>Avg for Magisterial District</i>	<i>Avg for Judicial District</i>	<i>Avg for Class of County</i>
	A. <b>2,943</b>	B. <b>3,306</b>	C. <b>4,119</b>
4. Compare the difference between the caseload average of this magisterial district to your judicial district caseload average.		<i>Difference (3A - 3B)</i>	<i>Ranking Total</i>
		<b>-363</b>	<b>5th out of 6</b>
5. Compare the difference between the caseload average of this magisterial district to your class of county caseload average.		<i>Difference (3A - 3C)</i>	<i>% Above/Below</i>
		<b>-1176</b>	<b>-29 %</b>
6. If this magisterial district is at the lower end of the caseload range <b>and</b> you are proposing to <b>reestablish</b> (no changes), please summarize your response from the plan that explains why you are departing from caseload equity.			
<b>Workload Analysis</b>			
7. Average total workloads:	<i>Avg for Magisterial District</i>	<i>Avg for Judicial District</i>	
	A. <b>36,137</b>	B. <b>31,135</b>	
8. Compare the difference between the average total workloads of this magisterial district to the judicial district.		<i>Difference (7A - 7B)</i>	<i>% Above/Below</i>
		<b>5,002</b>	<b>16 %</b>
9. If this magisterial district's average workload is fifteen (15%) percent <i>higher or lower than</i> your judicial district average workload <b>and</b> you are proposing to <b>reestablish</b> this magisterial district, please explain ( <i>summarize your response from the plan</i> ) why this does not result in an unwarranted inequity among the judges.			



**Magisterial District Information**

10. Magisterial District Judge (MDJ) Information:

Aaron S. Biichle

*Magisterial District Judge Name*

██████████  
*Birthdate*

1/4/26

*Term Expiration Date*

12/31/56

*Mandatory Retirement Date*

11. Magisterial District Court Information - Physical Location:

48 West Third Street, Williamsport, PA 17701

12. Is this court within the boundaries of the magisterial district?

Yes

13. Is the MDJ's residence within the boundaries of the magisterial district?

Yes

14. Are all portions of the magisterial district contiguous?

Yes

15. To the best of your knowledge, are there any planned developments such as a mall, highway expansion or gas drilling that will likely cause an increase in the case filings for this office? If **YES**, please summarize your response below.

No/Not Sure

16. List any police departments located within this magisterial district.

Pennsylvania College of Technology, Pennsylvania State Police, Williamsport Bureau Police

17. List any major highways within this magisterial district.

U.S. Route 220, I-180, U.S. Route 15

18. List the **current** municipalities for this magisterial district (alphabetically). For a list, click [HERE](#) for Realignment Orders submitted in the past.

Williamsport wards 1, 2, 10, 11, 12, 13

19. Are the **proposed** municipalities the same as above? If **NO**, please list all proposed municipalities (alphabetically).

No

Williamsport wards 1, 2, 8, 9, 10, 11, 12, 13

[In summary, this district (29-1-02) is assuming Williamsport wards 8 and 9 from District Court 29-1-01 in an effort to equalize the workloads among the districts.]

**20. Additional Comments:**

## Magisterial District Summary Worksheet - Reestablishment 2021-2022

Start by saving the fillable worksheet template locally on your system as a PDF form. Then, open and complete the worksheets in a PDF browser (not a web browser) to ensure all options and functionality are available. Answer the questions by typing or selecting responses. Press TAB or click on a field to advance. Hover the fields for tips and instructions. Save and upload the completed form to SharePoint.

<b>Magisterial District Court Number:</b>	29-3-01	<b>County:</b>	Lycoming
1. Proposed plan for this magisterial district: Reestablish		2. Effective date:	
<b>Caseload Analysis</b>			
3. Average total caseloads:	<i>Avg for Magisterial District</i>	<i>Avg for Judicial District</i>	<i>Avg for Class of County</i>
	A. 3,393	B. 3,306	C. 4,119
4. Compare the difference between the caseload average of this magisterial district to your judicial district caseload average.		<i>Difference (3A - 3B)</i>	<i>Ranking Total</i>
		87	2nd out of
5. Compare the difference between the caseload average of this magisterial district to your class of county caseload average.		<i>Difference (3A - 3C)</i>	<i>% Above/Below</i>
		-726	-18 %
6. If this magisterial district is at the lower end of the caseload range <b>and</b> you are proposing to <b>reestablish</b> (no changes), please summarize your response from the plan that explains why you are departing from caseload equity.			
<b>Workload Analysis</b>			
7. Average total workloads:	<i>Avg for Magisterial District</i>	<i>Avg for Judicial District</i>	
	A. 23,745	B. 31,135	
8. Compare the difference between the average total workloads of this magisterial district to the judicial district.		<i>Difference (7A - 7B)</i>	<i>% Above/Below</i>
		-7,390	-24 %
9. If this magisterial district's average workload is fifteen (15%) percent <i>higher or lower than</i> your judicial district average workload <b>and</b> you are proposing to <b>reestablish</b> this magisterial district, please explain ( <i>summarize your response from the plan</i> ) why this does not result in an unwarranted inequity among the judges.			
<p>Lycoming County is the largest county by area in the Commonwealth of Pennsylvania. Public access considerations impede the realignment of this district, which would further increase the area of the district.</p>			

**Magisterial District Information**

10. Magisterial District Judge (MDJ) Information:

Denise L. Dieter

  
Birthdate

1/2/28

Term Expiration Date

12/31/43

Mandatory Retirement Date

11. Magisterial District Court Information - Physical Location:

216 Market Street, Jersey Shore, PA 17740

12. Is this court within the boundaries of the magisterial district?

Yes

13. Is the MDJ's residence within the boundaries of the magisterial district?

Yes

14. Are all portions of the magisterial district contiguous?

Yes

15. To the best of your knowledge, are there any planned developments such as a mall, highway expansion or gas drilling that will likely cause an increase in the case filings for this office? If **YES**, please summarize your response below.

No/Not Sure

16. List any police departments located within this magisterial district.

Pennsylvania State Police, Tiadaghton Valley Regional

17. List any major highways within this magisterial district.

U.S. Route 220, PA Route 287, PA Route 44

18. List the **current** municipalities for this magisterial district (alphabetically). For a list, click [HERE](#) for Realignment Orders submitted in the past.

Anthony Township, Bastress Township, Brown Township, Cummings Township, Jersey Shore Borough, Limestone Township, McHenry Township, Mifflin Township, Nippenose Township, Piatt Township, Pine Township, Porter Township, Salladasburg Borough, Watson Township, Woodward Township

19. Are the **proposed** municipalities the same as above? If **NO**, please list all proposed municipalities (alphabetically).

Yes

**20. Additional Comments:**

## Magisterial District Summary Worksheet - Reestablishment 2021-2022

Start by saving the fillable worksheet template locally on your system as a PDF form. Then, open and complete the worksheets in a PDF browser (not a web browser) to ensure all options and functionality are available. Answer the questions by typing or selecting responses. Press TAB or click on a field to advance. Hover the fields for tips and instructions. Save and upload the completed form to SharePoint.

<b>Magisterial District Court Number:</b>	29-3-02	<b>County:</b>	Lycoming
1. Proposed plan for this magisterial district: <b>Realign</b>		2. Effective date: 1/1/2024	
<b>Caseload Analysis</b>			
3. Average total caseloads:	<i>Avg for Magisterial District</i>	<i>Avg for Judicial District</i>	<i>Avg for Class of County</i>
	A. 4,593	B. 3,306	C. 4,119
4. Compare the difference between the caseload average of this magisterial district to your judicial district caseload average.		<i>Difference (3A - 3B)</i>	<i>Ranking Total</i>
		1287	1st out of 6
5. Compare the difference between the caseload average of this magisterial district to your class of county caseload average.		<i>Difference (3A - 3C)</i>	<i>% Above/Below</i>
		474	12 %
6. If this magisterial district is at the lower end of the caseload range <b>and</b> you are proposing to <b>reestablish</b> (no changes), please summarize your response from the plan that explains why you are departing from caseload equity.			
<b>Workload Analysis</b>			
7. Average total workloads:	<i>Avg for Magisterial District</i>	<i>Avg for Judicial District</i>	
	A. 39,763	B. 31,135	
8. Compare the difference between the average total workloads of this magisterial district to the judicial district.		<i>Difference (7A - 7B)</i>	<i>% Above/Below</i>
		8,628	28 %
9. If this magisterial district's average workload is fifteen (15%) percent <i>higher or lower than</i> your judicial district average workload <b>and</b> you are proposing to <b>reestablish</b> this magisterial district, please explain ( <i>summarize your response from the plan</i> ) why this does not result in an unwarranted inequity among the judges.			

**Magisterial District Information**

10. Magisterial District Judge (MDJ) Information:

Gary A. Whiteman

*Magisterial District Judge Name*

██████████

*Birthdate*

12/31/23

*Term Expiration Date*

12/31/38

*Mandatory Retirement Date*

11. Magisterial District Court Information - Physical Location:

542 County Farm Road, Suite 103, Montoursville, PA 17754

12. Is this court within the boundaries of the magisterial district?

Yes

13. Is the MDJ's residence within the boundaries of the magisterial district?

Yes

14. Are all portions of the magisterial district contiguous?

Yes

15. To the best of your knowledge, are there any planned developments such as a mall, highway expansion or gas drilling that will likely cause an increase in the case filings for this office? If **YES**, please summarize your response below.

No/Not Sure

16. List any police departments located within this magisterial district.

Montoursville Borough, Pennsylvania State Police, South Williamsport

17. List any major highways within this magisterial district.

U.S. Route 15, I-180, U.S. Route 220, PA Route 87

18. List the **current** municipalities for this magisterial district (alphabetically). For a list, click [HERE](#) for Realignment Orders submitted in the past.

Cascade Township; Eldred Township; Fairfield Township; Gamble Township; Loyalsock Township precincts 1, 2, 4, 5, 6, 7; Montoursville Borough; Plunketts Creek Township; South Williamsport Borough; Upper Fairfield Township

19. Are the **proposed** municipalities the same as above?

No

If **NO**, please list all proposed municipalities (alphabetically).

Cascade Township; Eldred Township; Fairfield Township; Gamble Township; Loyalsock Township precincts 4, 5, 7; Montoursville Borough; Plunketts Creek Township; South Williamsport Borough; Upper Fairfield Township

[In summary, this district (29-3-02) is transferring Loyalsock Township precincts 1, 2, and 6 to District Court 29-3-04 in an effort to equalize the workloads among the districts.]

**20. Additional Comments:**

The effective date of this realignment is 1/1/2024 because the magisterial district judge for District 29-3-04 (the district assuming Loyalsock Township precincts 1, 2, and 6 from this district (29-3-02)) is assisting District Court 29-3-03 during a two-year MDJ vacancy (2022 and 2023).

All portions of this magisterial district (29-3-02) are contiguous because Loyalsock Township precinct 4 is contiguous with South Williamsport Borough via the Susquehanna River, which is assigned to the jurisdiction of District Court 29-3-02.

## Magisterial District Summary Worksheet - Reestablishment 2021-2022

Start by saving the fillable worksheet template locally on your system as a PDF form. Then, open and complete the worksheets in a PDF browser (not a web browser) to ensure all options and functionality are available. Answer the questions by typing or selecting responses. Press TAB or click on a field to advance. Hover the fields for tips and instructions. Save and upload the completed form to SharePoint.

<b>Magisterial District Court Number:</b>	29-3-03	<b>County:</b>	Lycoming
1. Proposed plan for this magisterial district: Reestablish		2. Effective date:	
<b>Caseload Analysis</b>			
3. Average total caseloads:	<i>Avg for Magisterial District</i>	<i>Avg for Judicial District</i>	<i>Avg for Class of County</i>
	A. 3,032	B. 3,306	C. 4,119
4. Compare the difference between the caseload average of this magisterial district to your judicial district caseload average.		<i>Difference (3A - 3B)</i>	<i>Ranking Total</i>
		-273.67000000	4th out of 6
5. Compare the difference between the caseload average of this magisterial district to your class of county caseload average.		<i>Difference (3A - 3C)</i>	<i>% Above/Below</i>
		-1086.67	-26 %
<p>6. If this magisterial district is at the lower end of the caseload range <b>and</b> you are proposing to <b>reestablish</b> (no changes), please summarize your response from the plan that explains why you are departing from caseload equity.</p> <p style="margin-left: 40px;">We believe the number of filings in this district will increase due to anticipated land and business development plans in the district. For instance, a new Geisinger medical facility will be opening in January 2022, and new retail establishments are moving into the area. It is anticipated that this will cause an increase in the number of traffic and other filings in the district.</p>			
<b>Workload Analysis</b>			
7. Average total workloads:		<i>Avg for Magisterial District</i>	<i>Avg for Judicial District</i>
		A. 26,177	B. 31,135
8. Compare the difference between the average total workloads of this magisterial district to the judicial district.		<i>Difference (7A - 7B)</i>	<i>% Above/Below</i>
		-4,958	-16 %
<p>9. If this magisterial district's average workload is fifteen (15%) percent <i>higher or lower than</i> your judicial district average workload <b>and</b> you are proposing to <b>reestablish</b> this magisterial district, please explain (<i>summarize your response from the plan</i>) why this does not result in an unwarranted inequity among the judges.</p> <p style="margin-left: 40px;">We believe the number of filings in this district will increase due to anticipated land and business development plans in the district. For instance, a new Geisinger medical facility opened in January 2022, and new retail establishments are moving into the area. It is anticipated that this will cause an increase in the number of traffic and other filings in the district.</p>			



Magisterial District Information	
10. Magisterial District Judge (MDJ) Information:	
vacant	12/31/23
<i>Magisterial District Judge Name</i>	<i>Birthdate</i> <i>Term Expiration Date</i> <i>Mandatory Retirement Date</i>
11. Magisterial District Court Information - Physical Location:	
2134 Route 405 Highway, Muncy, PA 17756	
12. Is this court within the boundaries of the magisterial district?	Yes
13. Is the MDJ's residence within the boundaries of the magisterial district?	Yes
14. Are all portions of the magisterial district contiguous?	Yes
15. To the best of your knowledge, are there any planned developments such as a mall, highway expansion or gas drilling that will likely cause an increase in the case filings for this office? If <b>YES</b> , please summarize your response below.	Yes
A new Geisinger medical facility will be opening in January 2022 and new retail establishments are moving into the district.	
16. List any police departments located within this magisterial district.	
Hughesville, Montgomery Borough, Muncy Borough, Muncy Township, Pennsylvania College of Technology, Pennsylvania State Police	
17. List any major highways within this magisterial district.	
U.S. Route 15, I-180, U.S. Route 220	
18. List the <b>current</b> municipalities for this magisterial district (alphabetically). For a list, click <a href="#">HERE</a> for Realignment Orders submitted in the past.	
Brady Township, Clinton Township, Franklin Township, Hughesville Borough, Jordan Township, Mill Creek Township, Montgomery Borough, Moreland Township, Muncy Borough, Muncy Creek Township, Muncy Township, Penn Township, Picture Rocks Borough, Shrewsbury Township, Washington Township, Wolf Township	
19. Are the <b>proposed</b> municipalities the same as above? If <b>NO</b> , please list all proposed municipalities (alphabetically).	Yes
20. Additional Comments:	

## Magisterial District Summary Worksheet - Reestablishment 2021-2022

Start by saving the fillable worksheet template locally on your system as a PDF form. Then, open and complete the worksheets in a PDF browser (not a web browser) to ensure all options and functionality are available. Answer the questions by typing or selecting responses. Press TAB or click on a field to advance. Hover the fields for tips and instructions. Save and upload the completed form to SharePoint.

<b>Magisterial District Court Number:</b>	29-3-04	<b>County:</b>	Lycoming
1. Proposed plan for this magisterial district: <b>Realign</b>		2. Effective date: <b>1/1/2024</b>	
<b>Caseload Analysis</b>			
3. Average total caseloads:	<i>Avg for Magisterial District</i>	<i>Avg for Judicial District</i>	<i>Avg for Class of County</i>
	A. <b>2,756</b>	B. <b>3,306</b>	C. <b>4,119</b>
4. Compare the difference between the caseload average of this magisterial district to your judicial district caseload average.		<i>Difference (3A - 3B)</i>	<i>Ranking Total</i>
		<b>-550</b>	<b>6th out of 6</b>
5. Compare the difference between the caseload average of this magisterial district to your class of county caseload average.		<i>Difference (3A - 3C)</i>	<i>% Above/Below</i>
		<b>-1363</b>	<b>-33 %</b>
6. If this magisterial district is at the lower end of the caseload range <b>and</b> you are proposing to <b>reestablish</b> (no changes), please summarize your response from the plan that explains why you are departing from caseload equity.			
<b>Workload Analysis</b>			
7. Average total workloads:	<i>Avg for Magisterial District</i>	<i>Avg for Judicial District</i>	
	A. <b>19,754</b>	B. <b>31,135</b>	
8. Compare the difference between the average total workloads of this magisterial district to the judicial district.		<i>Difference (7A - 7B)</i>	<i>% Above/Below</i>
		<b>-11,381</b>	<b>-37 %</b>
9. If this magisterial district's average workload is fifteen (15%) percent <i>higher or lower than</i> your judicial district average workload <b>and</b> you are proposing to <b>reestablish</b> this magisterial district, please explain ( <i>summarize your response from the plan</i> ) why this does not result in an unwarranted inequity among the judges.			

**Magisterial District Information**

10. Magisterial District Judge (MDJ) Information:

William C. Solomon

*Magisterial District Judge Name*

██████████  
*Birthdate*

1/2/28

*Term Expiration Date*

12/31/37

*Mandatory Retirement Date*

11. Magisterial District Court Information - Physical Location:

1965 Lycoming Creek Road, Room 101, Williamsport, PA 17701

12. Is this court within the boundaries of the magisterial district?

Yes

13. Is the MDJ's residence within the boundaries of the magisterial district?

Yes

14. Are all portions of the magisterial district contiguous?

Yes

15. To the best of your knowledge, are there any planned developments such as a mall, highway expansion or gas drilling that will likely cause an increase in the case filings for this office? If **YES**, please summarize your response below.

No/Not Sure

16. List any police departments located within this magisterial district.

Old Lycoming Township, Pennsylvania State Police, South Williamsport, Tiadaghton Valley Regional

17. List any major highways within this magisterial district.

U.S. Route 15, PA Route 14

18. List the **current** municipalities for this magisterial district (alphabetically). For a list, click [HERE](#) for Realignment Orders submitted in the past.

Armstrong Township, Cogan House Township, Duboistown Borough, Hepburn Township, Jackson Township, Lewis Township, Loyalsock Township precinct 3, Lycoming Township, McIntyre Township, McNett Township, Old Lycoming Township, Susquehanna Township

19. Are the **proposed** municipalities the same as above?

No

If **NO**, please list all proposed municipalities (alphabetically).

Armstrong Township; Cogan House Township; Duboistown Borough; Hepburn Township; Jackson Township; Lewis Township; Loyalsock Township precincts 1, 2, 3, 6; Lycoming Township; McIntyre Township; McNett Township; Old Lycoming Township; Susquehanna Township

[In summary, this district (29-3-04) is assuming Loyalsock Township precincts 1, 2, and 6 from District Court 29-3-02 in an effort to equalize the workloads among the districts.]

**20. Additional Comments:**

The effective date of this realignment is 1/1/2024 because the magisterial district judge for this district (29-3-04) is assisting District Court 29-3-03 during a two-year MDJ vacancy (2022 and 2023).

This district (29-3-04) is assuming all truancy filings from District Court 29-1-01 effective 1/1/2022.



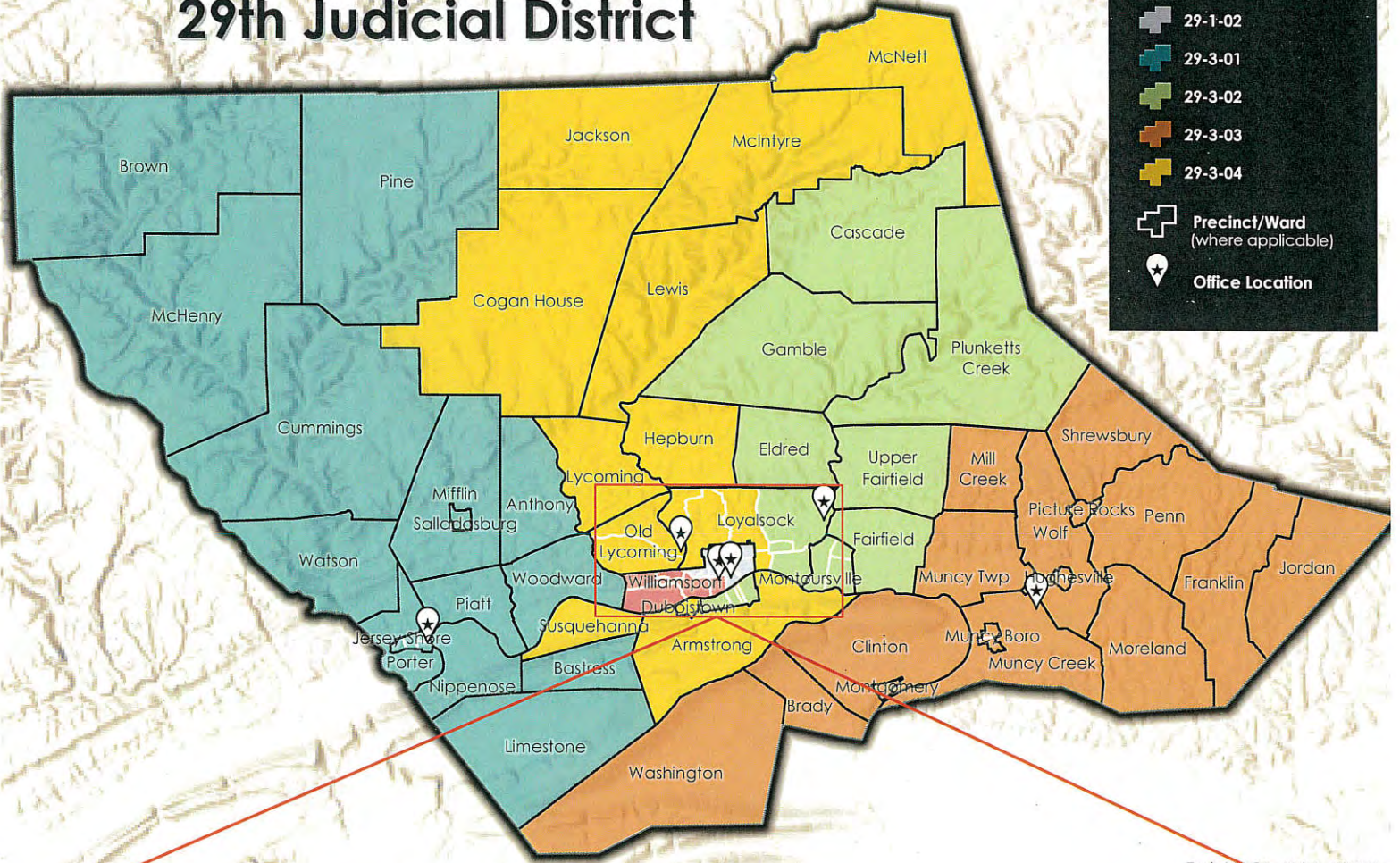
# Magisterial Districts for the 29th Judicial District

**Magisterial District**

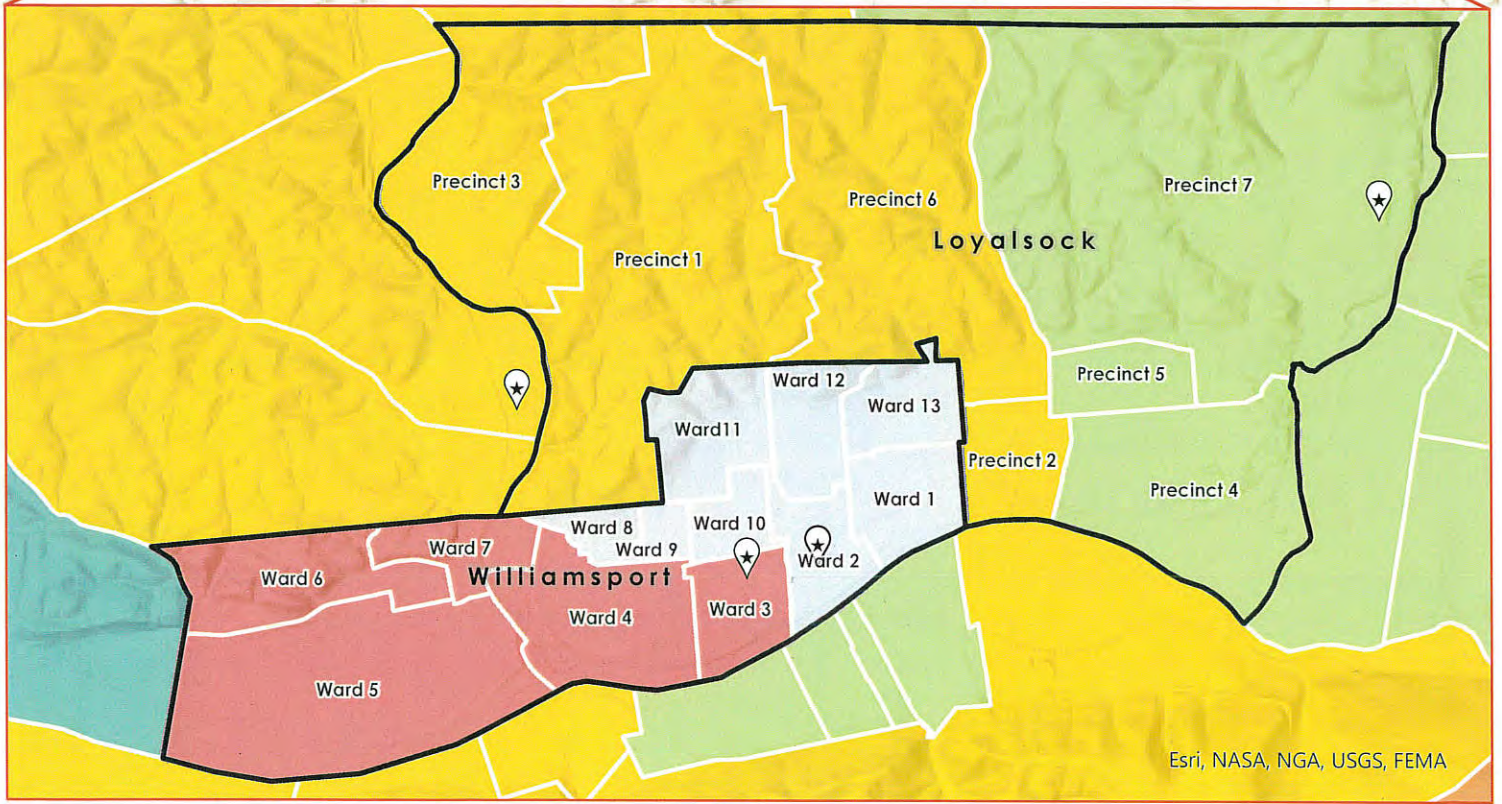
- 29-1-01
- 29-1-02
- 29-3-01
- 29-3-02
- 29-3-03
- 29-3-04

  Precinct/Ward  
(where applicable)

★ Office Location



Esri, NASA, NGA, USGS



Esri, NASA, NGA, USGS, FEMA