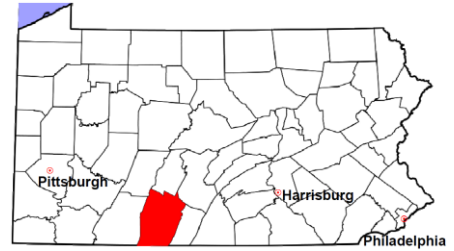


# Bedford County

2012 Population Estimate: 49,324

Class of County: 6th

No. of Common Pleas Court Judgeships: 2



2012 Criminal	No. of Cases
---------------	--------------

Cases Pending 1/1/2012	205
New Cases Filed in 2012	496
Reopened Cases	29
<b>Cases Available for Disposition</b>	<b>730</b>
<b>Disposed by:</b>	
Withdrawn/Dismissed	21 4.2%
ARD	51 10.2%
Guilty Plea	380 75.8%
Non-Jury Trial	0
Jury Trial	9 1.8%
Inactive	6 1.2%
Other	34 6.8%
<b>Total Cases Disposed</b>	<b>501 100.0%</b>
<b>Cases Pending 12/31/2012</b>	<b>229</b>
Cases Awaiting Sentencing	46

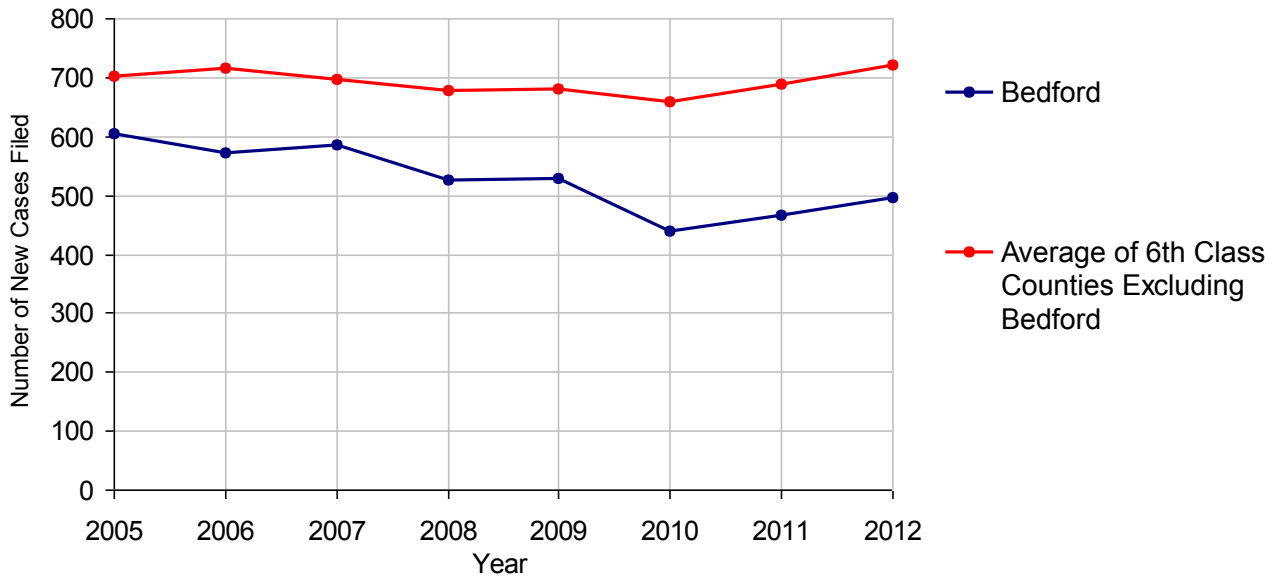


### Age of Pending Cases as of 12/31/2012

0-60 Days	99	43.2%
61-120 Days	64	27.9%
121-180 Days	41	17.9%
181-240 Days	6	2.6%
241-300 Days	4	1.7%
301-360 Days	2	0.9%
Over 360 Days	13	5.7%
<b>Total</b>	<b>229</b>	<b>100.0%</b>

Data provided by CPCMS

**Criminal New Cases Filed, 2005-2012**

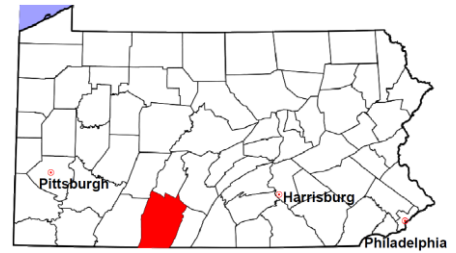


# Bedford County

2012 Population Estimate: 49,324

Class of County: 6th

No. of Common Pleas Court Judgeships: 2



## 2012 Criminal - New Cases by Case Type

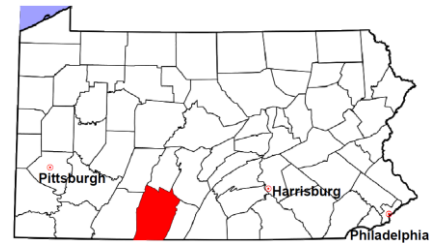


Case Type	Felony	Misdemeanor	Summary /Ungraded	Total
Person	26	54	0	80
Property	87	84	0	171
Drug	33	39	0	72
Weapon	3	2	0	5
Public Order	10	30	0	40
Motor Vehicle - DWI/DUI	0	125	0	125
Motor Vehicle - Other	0	3	0	3
Other	0	0	0	0
<b>Total</b>	<b>159</b>	<b>337</b>	<b>0</b>	<b>496</b>
	<b>32.1%</b>	<b>67.9%</b>		<b>100.0%</b>

Data provided by CPCMS

# Bedford County

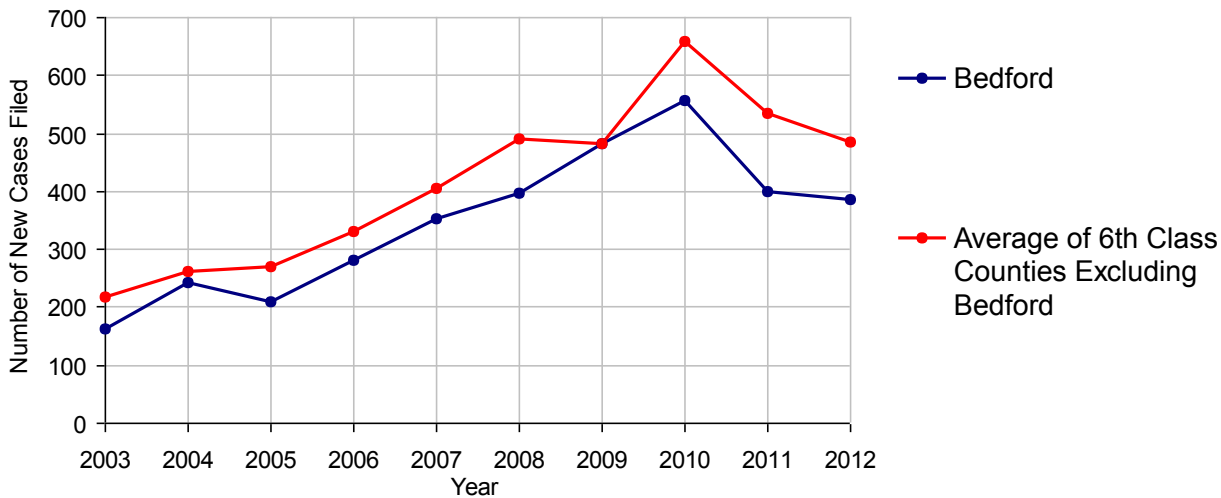
2012 Population Estimate: 49,324  
 Class of County: 6th  
 No. of Common Pleas Court Judgeships: 2



2012 Civil	Civil Action	Other	Total
Cases Pending 1/1/2012	313	275	588
Docketed Cases	221	164	385
Arbitration Appeals	0	0	0
Transferred In	0	1	1
Returned to Active	1	1	2
<b>Cases Available for Processing</b>	<b>535</b>	<b>441</b>	<b>976</b>
Disposed By:			
Default Judgments	75	62	137
Cases Decided by Arbitration Board	5	1	6
Dispositive Motions	12	8	20
Settlements	19	6	25
Moved to Inactive Status	0	0	0
Transferred/Withdrawn	0	0	0
Administrative Purge	0	0	0
Other	73	45	118
Jury Trial	0	1	1
Non-Jury Trial	1	3	4
<b>Total Cases Disposed</b>	<b>185</b>	<b>126</b>	<b>311</b>
<b>Cases Pending 12/31/2012</b>	<b>350</b>	<b>315</b>	<b>665</b>

Age of Pending Cases as of 12/31/2012 (Civil Action Only)		
0-6 months	75	21.4%
7-12 months	79	22.6%
13-18 months	47	13.4%
19-24 months	35	10.0%
25-30 months	47	13.4%
31-36 months	19	5.4%
37-42 months	21	6.0%
43-48 months	11	3.1%
49-54 months	3	0.9%
55-60 months	4	1.1%
61-66 months	4	1.1%
67-72 months	2	0.6%
Over 72 months	3	0.9%
<b>Total</b>	<b>350</b>	<b>100.0%</b>

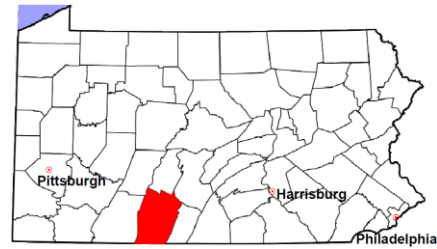
Docketed Cases, 2003-2012



Note: Prior to June 2010, docketed cases under the "Other" category were not reported. The inclusion of these cases starting from June 2010 may contribute to an increase in docketed cases from 2009 to 2010.

# Bedford County

2012 Population Estimate: 49,324  
 Class of County: 6th  
 No. of Common Pleas Court Judgeships: 2



## 2012 Civil - Docketed Cases Listed by Case Type

### TORT 42 10.9%

*(does not include mass tort)*

Intentional	1
Malicious Prosecution	1
Motor Vehicle	26
Nuisance	0
Premise Liability	4
Product Liability	1
Slander/Libel/Defamation	0
Other	9

### MASS TORT 0

Asbestos	0
Tobacco	0
Toxic Tort - DES	0
Toxic Tort - Implant	0
Toxic Waste	0
Other	0

### PROFESSIONAL LIABILITY 8 2.1%

Dental	0
Legal	0
Medical Malpractice	5
Other	3

### CONTRACT 167 43.4%

*(does not include judgments)*

Buyer Plaintiff	4
Debt Collection: Credit Card	102
Debt Collection: Other	56
Employment Dispute:	
Employment Dispute: Discriminatio	0
Employment Dispute: Other	0
Other	5

### REAL PROPERTY 112 29.1%

Ejectment*	5
Eminent Domain/Condemnation	1
Ground Rent	0
Landlord/Tenant Dispute	4
Mortgage Forclosures:	
Residential*	87
Commercial*	4
Partition of Real Property*	3
Quiet Title*	3
Other*	5

### CIVIL APPEALS 49 12.7%

*- Administrative Agencies*

Board of Assessment*	38
Board of Elections*	0
Dept. of Transportation*	11
Zoning Board*	0
Statutory Appeal - Other*	0
Other*	0

### MISCELLANEOUS 7 1.8%

Common Law/	
Statutory Arbitration*	0
Declaratory Judgment*	1
Mandamus*	0
Non-Domestic Relations	
Restraining Order*	0
Quo Warranto*	0
Replevin*	2
Other*	4

### TOTAL DOCKETED CASES: 385 100%

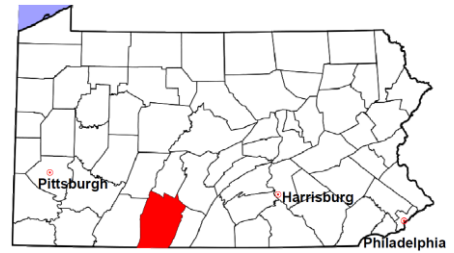
#### Of the Docketed Cases:

Pro Se Filings:	16	4.2%	Class Action Suits:	0	MDJ Appeals:	22	5.7%
-----------------	----	------	---------------------	---	--------------	----	------

\* Civil Other

# Bedford County

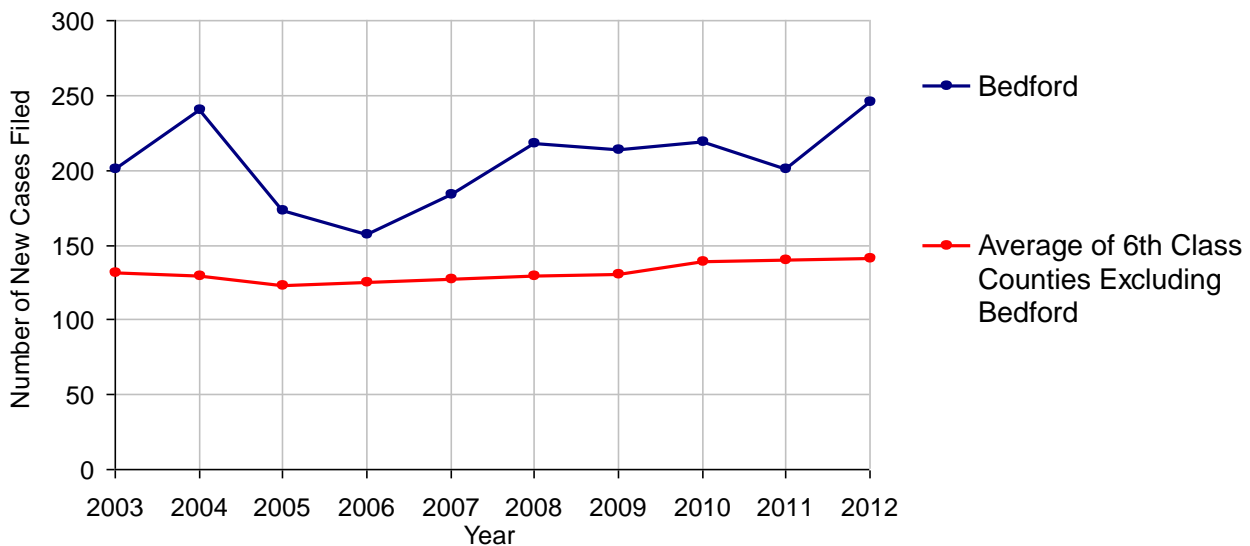
2012 Population Estimate: 49,324  
 Class of County: 6th  
 No. of Common Pleas Court Judgeships: 2



## 2012 Protection From Abuse

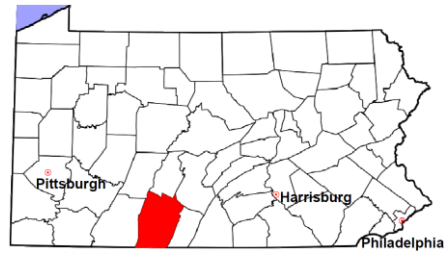
	No. of Petitions
Cases Pending 1/1/2012	4
New Cases Filed in 2012	246
<i>Of these, Petitions Requesting Temporary Orders: 232 (94.3%)</i>	
<i>Temporary Orders DENIED: 10 (4.3%), Temporary Orders GRANTED: 222 (95.7%)</i>	
<b>Cases Available for Processing</b>	<b>250</b>
Processed By:	
Temporary Order DENIED After Ex Parte Hearing and No Evidentiary Hearing Scheduled	1 0.4%
Temporary Order DISMISSED After Evidentiary Hearing and No Final Order Entered	5 2.2%
Final Order DENIED After Evidentiary Hearing Before a Judge	4 1.7%
Final Order GRANTED After Evidentiary Hearing Before a Judge	21 9.2%
Plaintiff Did Not Appear For Evidentiary Hearing	9 3.9%
Final Order by STIPULATION OR AGREEMENT Between the Parties	120 52.4%
Petition WITHDRAWN by Plaintiff	67 29.3%
TRANSFERRED to Another Jurisdiction	0
DECEASED Party	0
Other	2 0.9%
<b>Cases Processed</b>	<b>229 100.0%</b>
<b>Cases Pending 12/31/2012</b>	<b>21</b>

**PFA New Cases Filed, 2003-2012**



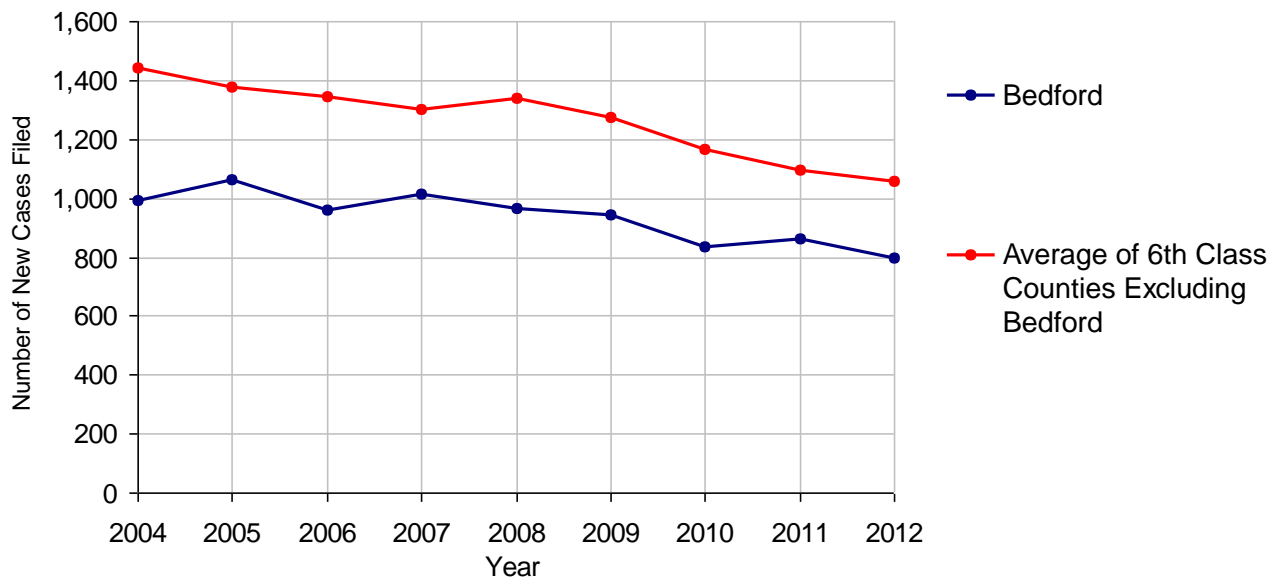
# Bedford County

2012 Population Estimate: 49,324  
 Class of County: 6th  
 No. of Common Pleas Court Judgeships: 2



<b>2012 Spousal &amp; Child Support</b>	<b>No. of Petitions</b>	
Cases Pending 1/1/2012	182	
New Cases Filed in 2012	796	
Dockets Transferred In (+)	26	
Dockets Transferred Out (-)	12	
<b>Cases Available for Processing</b>	<b>992</b>	
Processed By:		
Judge	113	13.5%
Intake Officer	721	86.5%
Hearing Officer	0	
Other	0	
<b>Cases Processed</b>	<b>834</b>	<b>100.0%</b>
<b>Cases Pending 12/31/2012</b>	<b>158</b>	

**Spousal & Child Support New Cases Filed, 2004-2012**

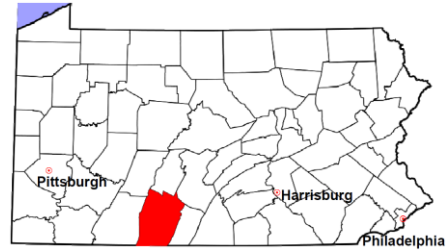


# Bedford County

2012 Population Estimate: 49,324

Class of County: 6th

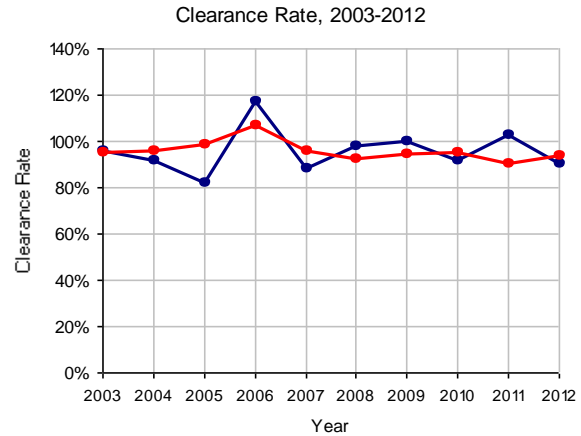
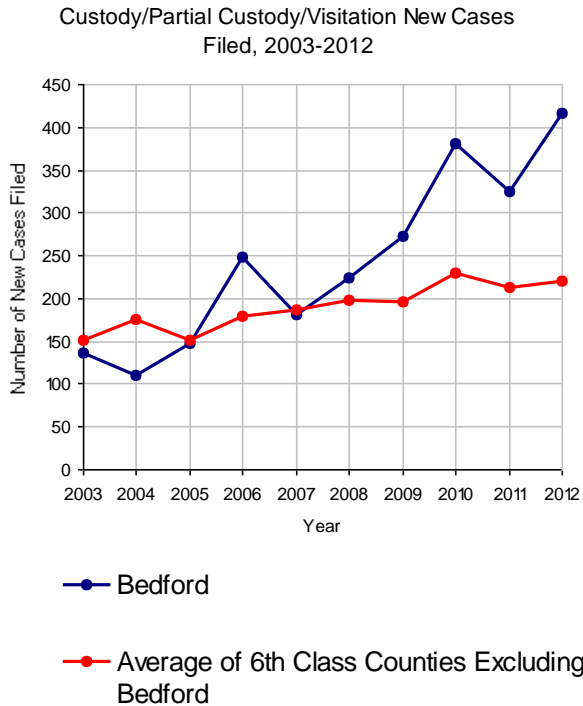
No. of Common Pleas Court Judgeships: 2



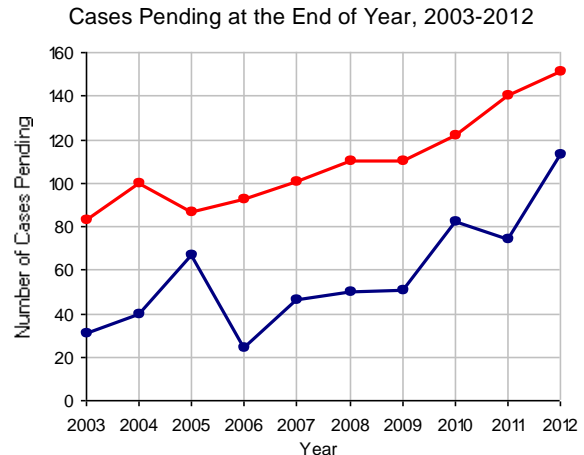
## 2012 Custody/Partial Custody/Visitation

No. of Petitions

Cases Pending 1/1/2012	74
New Cases Filed in 2012	417
<b>Cases Available for Processing</b>	<b>491</b>
Processed By:	
Judge	378 100.0%
Non-Judicial Officer	0
Other	0
<b>Cases Processed</b>	<b>378 100.0%</b>
<b>Cases Pending 12/31/2012</b>	<b>113</b>

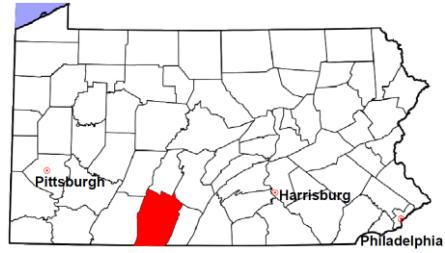


Note: Clearance Rate = Cases Processed / New Cases Filed



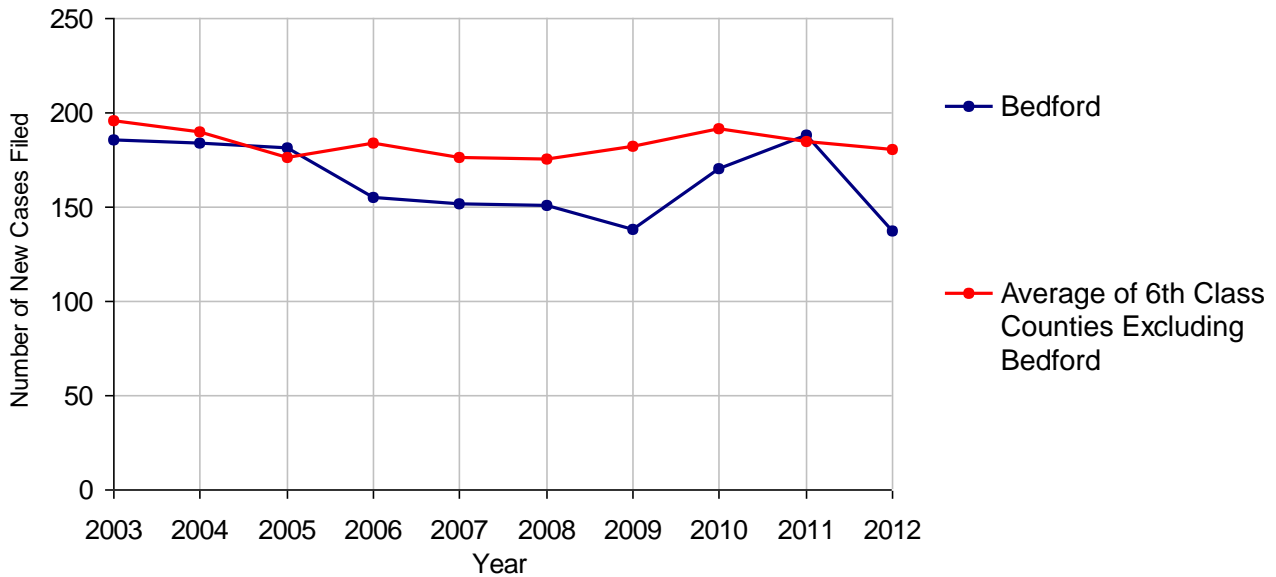
# Bedford County

2012 Population Estimate: 49,324  
 Class of County: 6th  
 No. of Common Pleas Court Judgeships: 2



<b>2012 Divorce</b>	<b>No. of Petitions</b>	
Cases Pending 1/1/2012	296	
New Cases Filed in 2012	137	
<b>Cases Available for Processing</b>	<b>433</b>	
Processed By:		
Contested Before a Judge	0	
Contested Before a Master	0	
Uncontested	141	97.2%
Other	4	2.8%
<b>Cases Processed</b>	<b>145</b>	<b>100.0%</b>
<b>Cases Pending 12/31/2012</b>	<b>288</b>	

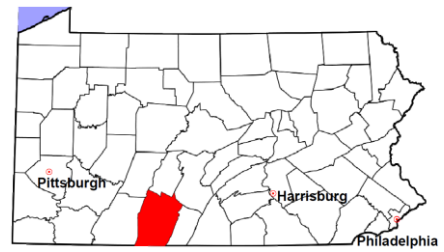
**Divorce New Cases Filed, 2003-2012**





# Bedford County

2012 Population Estimate: 49,324  
 Class of County: 6th  
 No. of Common Pleas Court Judgeships: 2



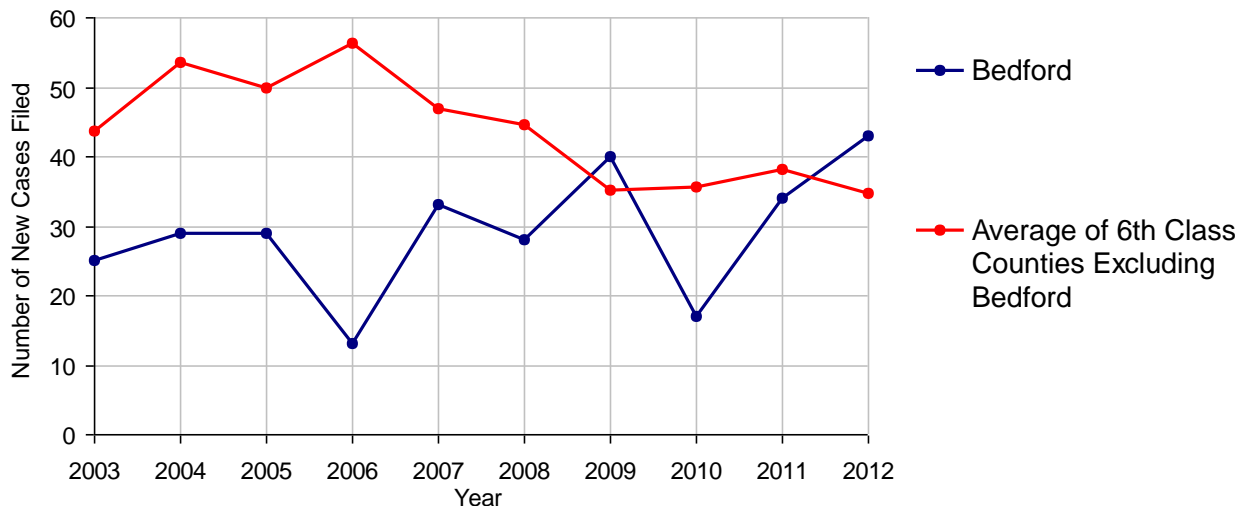
## 2012 Juvenile Dependency - Active Dependent Inventory



	Abuse/ Neglect	Status Offenses	Total
Cases Pending 1/1/2012	5	0	5
New Petitions Filed in 2012	43	0	43
Other	1	0	1
<b>Total Petitions Available for Processing</b>	<b>49</b>	<b>0</b>	<b>49</b>
Processed by:			
Adjudicated Dependent			
Judge	39	0	39
Master	0	0	0
Adjudicated NOT Dependent			
Judge	0	0	0
Master	0	0	0
Withdrawn/Dismissed/Inactive	3	0	3
Other	0	0	0
<b>Total Petitions Processed</b>	<b>42</b>	<b>0</b>	<b>42</b>
<b>Cases Pending 12/31/2012</b>	<b>7</b>	<b>0</b>	<b>7</b>

Data provided by CPCMS

Abuse/Neglect and Status Offenses New Cases Filed, 2003-2012



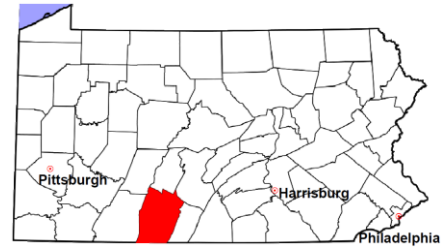
Note: Dependency data for 2002-2010 were collected manually. Dependency data for 2011 and 2012 were provided by CPCMS.

# Bedford County

2012 Population Estimate: 49,324

Class of County: 6th

No. of Common Pleas Court Judgeships: 2



## 2012 Juvenile Dependency - Adjudicated Dependent Inventory



	Abuse/ Neglect	Status Offenses	Total
Cases Pending 1/1/2012	30	1	31
New Adjudicated Dependent Cases	39	0	39
Other	0	0	0
<b>Total Adjudicated Dependent Cases</b>	<b>69</b>	<b>1</b>	<b>70</b>
<b><u>Court Supervision Terminated:</u></b>			
Family Reunification	9 26.5%	0	9 26.5%
Adoption	5 14.7%	0	5 14.7%
Placement with a Relative/Guardian	13 38.2%	0	13 38.2%
Aged Out	6 17.6%	0	6 17.6%
Other Permanency Outcomes*	0	0	0
Other**	1 2.9%	0	1 2.9%
<b>Total Adjudicated Dependent Cases Terminated</b>	<b>34 100.0%</b>	<b>0 100.0%</b>	<b>34 100.0%</b>
<b>Cases Pending 12/31/2012</b>	<b>35</b>	<b>1</b>	<b>36</b>

Data provided by CPCMS

\* Other Permanency Outcomes include: adjudicated delinquent, death due to natural causes, death due to negligence, emancipation, permanent living arrangement, and parent has come forward.

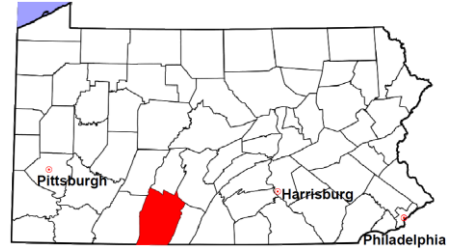
\*\* Other includes cases where court supervision is terminated due to transfer out of jurisdiction, withdrawal and administrative closure.

# Bedford County

2012 Population Estimate: 49,324

Class of County: 6th

No. of Common Pleas Court Judgeships: 2

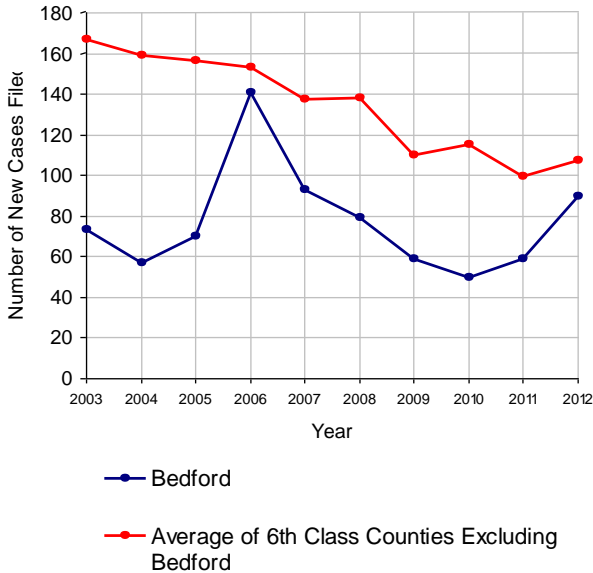


## 2012 Juvenile Delinquency

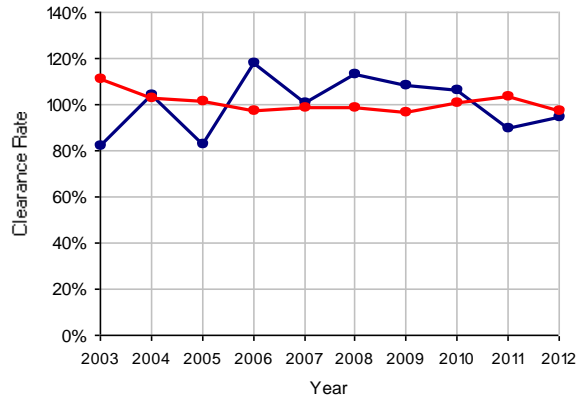
**No. of Cases**

Cases Pending 1/1/2012	15
New Cases Filed in 2012	90
<b>Cases Available for Processing</b>	<b>105</b>
Processed By:	
Judge	27 31.8%
Non-Judicial Officer	55 64.7%
Other	3 3.5%
<b>Cases Processed</b>	<b>85 100.0%</b>
<b>Cases Pending 12/31/2012</b>	<b>20</b>

Juvenile Delinquency New Cases Filed, 2003-2012

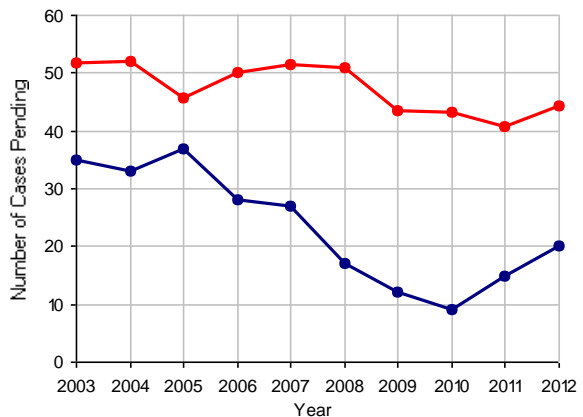


Clearance Rate, 2003-2012



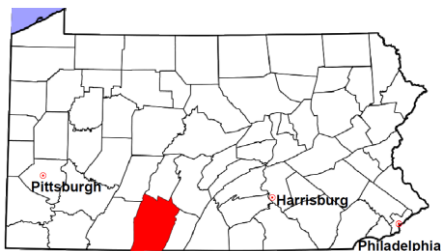
Note: Clearance Rate = Cases Processed / New Cases Filed

Cases Pending at the End of Year, 2003-2012



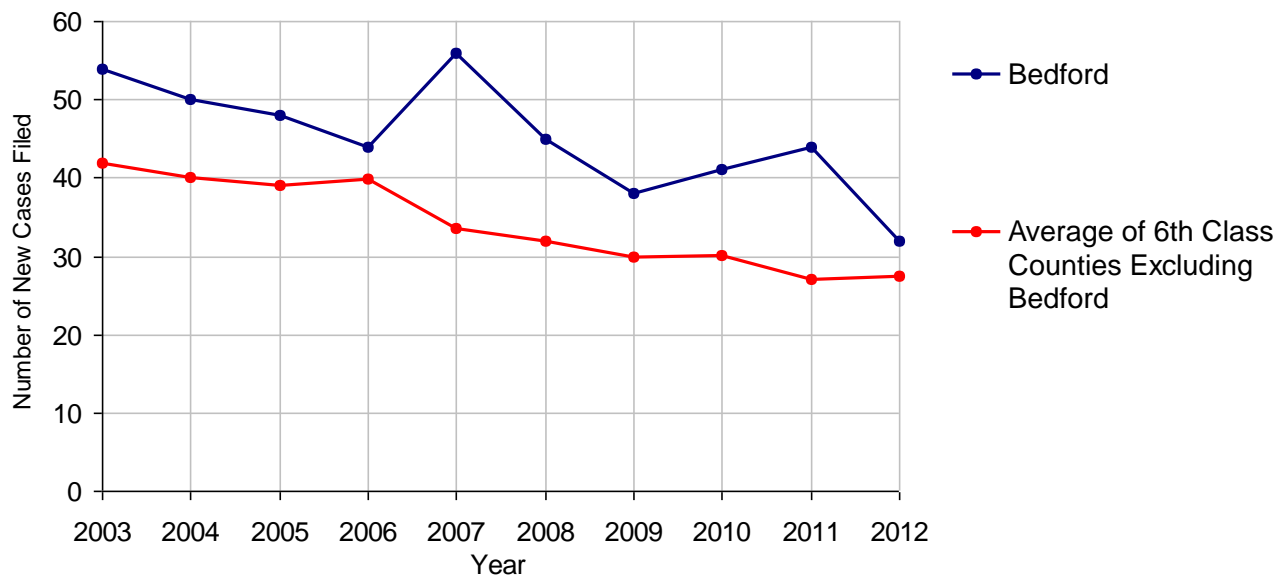
# Bedford County

2012 Population Estimate: 49,324  
 Class of County: 6th  
 No. of Common Pleas Court Judgeships: 2



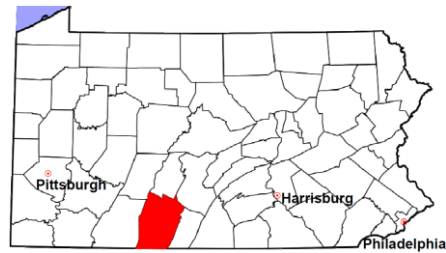
<b>2012 Accounts</b>	<b>No. of Cases</b>	
Cases Pending 1/1/2012	7	
New Cases Filed in 2012	32	
<b>Cases Available for Processing</b>	<b>39</b>	
Processed By:		
Contested before a Judge	2	6.5%
Contested before a Non-judicial Officer	0	
Uncontested	29	93.5%
Other	0	
<b>Cases Processed</b>	<b>31</b>	<b>100.0%</b>
<b>Cases Pending 12/31/2012</b>	<b>8</b>	

**Accounts New Cases Filed, 2003-2012**



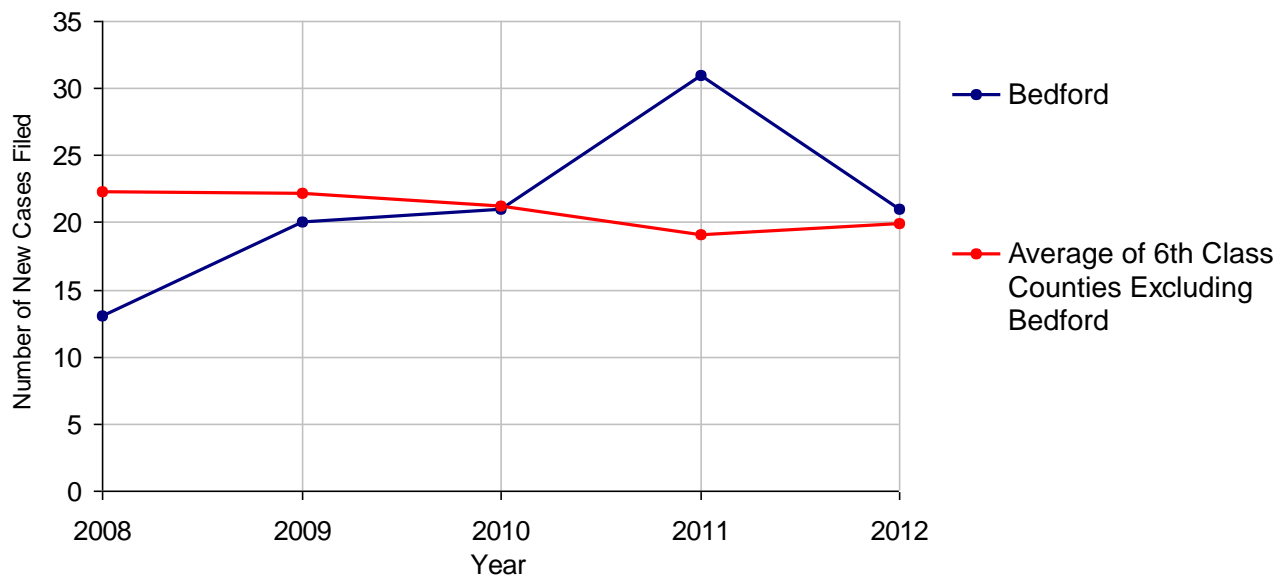
# Bedford County

2012 Population Estimate: 49,324  
 Class of County: 6th  
 No. of Common Pleas Court Judgeships: 2



<b>2012 Adoptions</b>		<b>No. of Cases</b>	
Cases Pending 1/1/2012		4	
New Cases Filed in 2012		21	
<b>Cases Available for Processing</b>		<b>25</b>	
Processed By:			
Contested before a Judge	Granted	2	12.5%
	Denied	0	
Uncontested	Granted	14	87.5%
	Denied	0	
Other		0	
<b>Cases Processed</b>		<b>16</b>	<b>100.0%</b>
<b>Cases Pending 12/31/2012</b>		<b>9</b>	

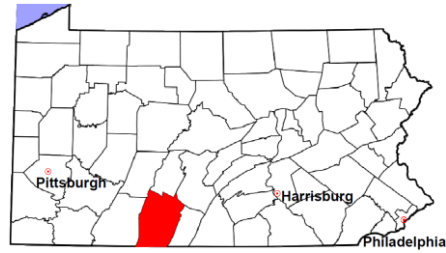
**Adoptions New Cases Filed, 2008-2012**



Note: Prior to 2008, each petition was counted as one new case, regardless of the number of children listed on the petition. Starting in 2008, each child listed on a petition is counted as a separate case. Therefore, statistics since 2008 should not be compared to statistics prior to 2008.

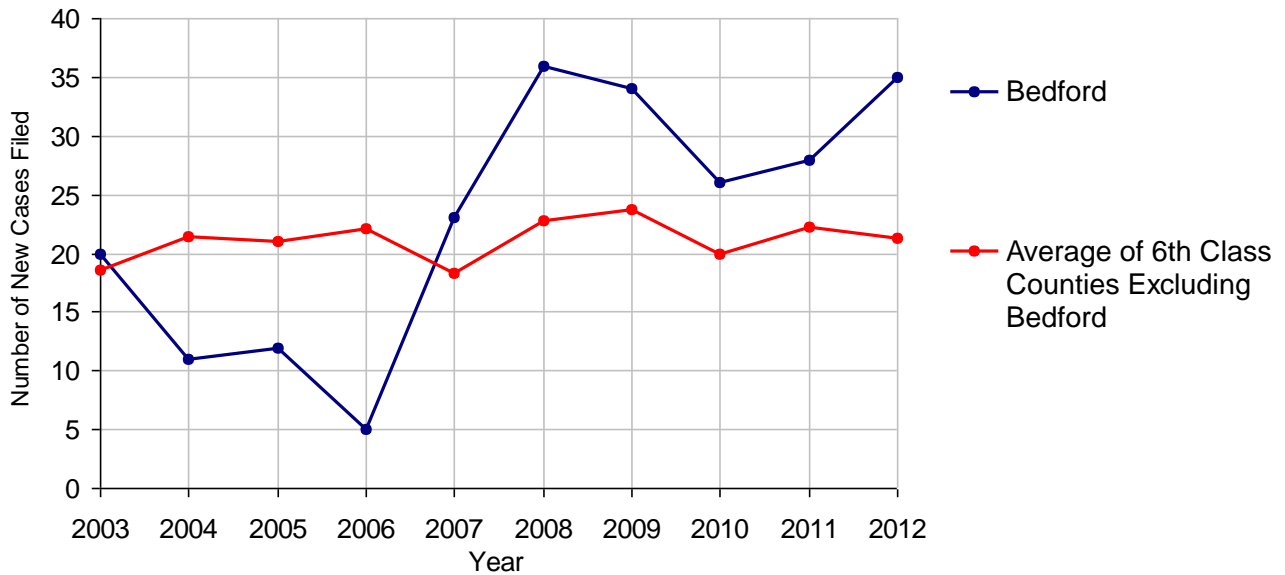
# Bedford County

2012 Population Estimate: 49,324  
 Class of County: 6th  
 No. of Common Pleas Court Judgeships: 2



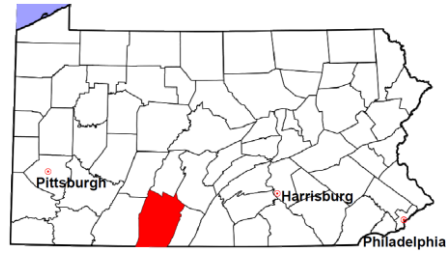
2012 Relinquishments/Terminations	No. of Cases
Cases Pending 1/1/2012	2
New Cases Filed in 2012	35
<b>Cases Available for Processing</b>	<b>37</b>
Processed By:	
Contested before a Judge	0
Uncontested	30 100.0%
Other	0
<b>Cases Processed</b>	<b>30 100.0%</b>
<b>Cases Pending 12/31/2012</b>	<b>7</b>

Relinquishments/Terminations New Cases Filed, 2003-2012



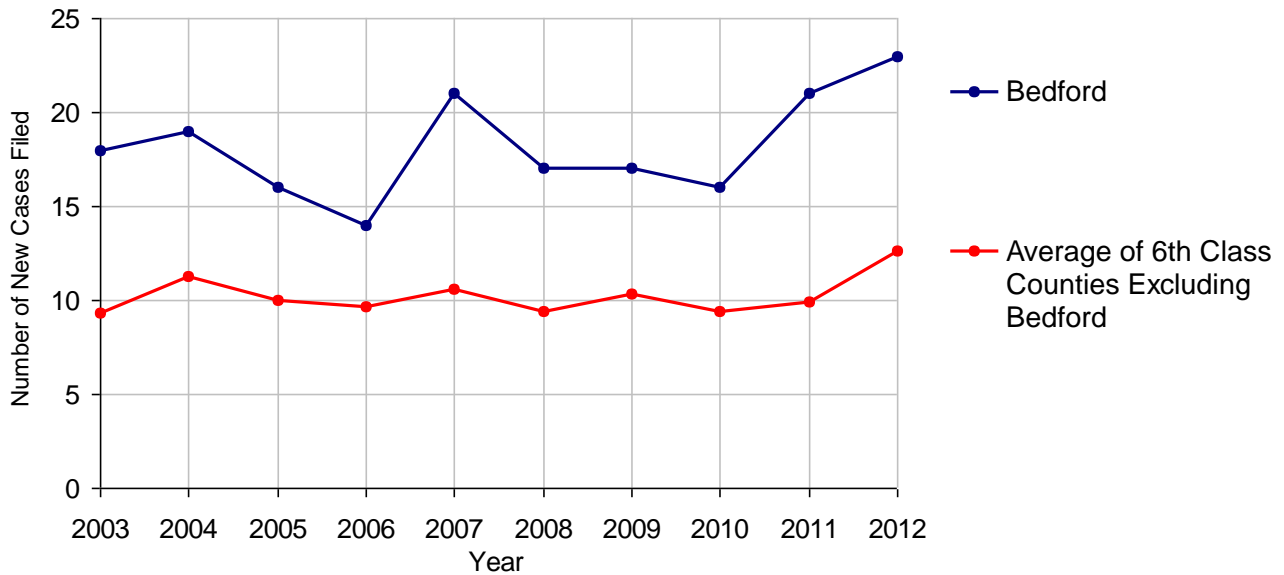
# Bedford County

2012 Population Estimate: 49,324  
 Class of County: 6th  
 No. of Common Pleas Court Judgeships: 2



2012 Appointment of Guardians	No. of Cases
Cases Pending 1/1/2012	2
New Cases Filed in 2012	23
<b>Cases Available for Processing</b>	<b>25</b>
Processed By:	
Contested before a Judge	0
Uncontested	23    95.8%
Other	1    4.2%
<b>Cases Processed</b>	<b>24    100.0%</b>
<b>Cases Pending 12/31/2012</b>	<b>1</b>

Appointment of Guardians New Cases Filed, 2003-2012



# Bedford County

2012 Population Estimate: 49,324  
 Class of County: 6th  
 No. of Common Pleas Court Judgeships: 2



## 2012 Jury Yield and Utilization

### Jury Yield

Qualification Questionnaires/Summonses Mailed:	2,035	A		
Returned Undeliverable:	15	B	0.7%	Of Qualification Questionnaires/Summonses Mailed
Not Responded to:	100	C	4.9%	
the Number of Prospective Jurors:				
Disqualified:	41	D	2.0%	
Exempted:	75	E	3.7%	
Excused:	745	F	36.6%	
Deferred to New Term:	157	G	7.7%	
Deferred from Previous Term:	159	H	7.8%	
<b>Total Number of Qualified Jurors Available for Service:</b>	<b>1,061</b>	<b>I</b>	<b>52.1%</b>	

*I=A-B-C-D-E-F-G+H*

### Jury Utilization

the Number of Jurors:				
Reporting for Service:	1,193		112.4%	Of Jurors Qualified and Available
Told Not to Report for Service:	480		45.2%	
Sent to Courtroom for Jury Selection (Voir Dire):	412		34.5%	Of Jurors Reporting for Service
Impanelled or Sworn (jurors/alternates):	145		12.2%	
Removed for Cause/Hardship:	74			
Removed by Peremptory Challenge:	125			

### Jury Costs

Total Annual Budget for Juror Operations:	\$55,500.00	J
Average Cost Per Juror:	\$27.27	K

*K=J/A*

In mid-2011, AOPC began utilizing the National Center for State Courts' Jury Managers' Toolbox for collecting jury data. In 2012, the counties began providing additional jury data which included information about the summoning practices in the counties. With this additional data, we can now see not only how many citizens come to our courthouses every day in anticipation of serving on a jury, but the number of citizens actually summonsed and the number of those summonsed who are exempt, excused or disqualified from service. With this wider view of the jury process, we can determine the efficiency with which our courts operate, and with the assistance of the Jury Managers' Toolbox find guidance in streamlining the jury summonsing practices.