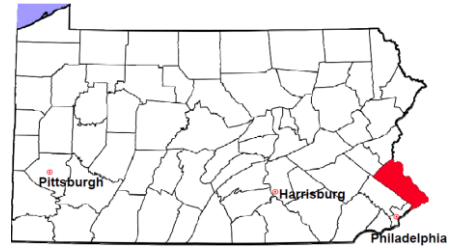


# Bucks County

2012 Population Estimate: 627,053  
 Class of County: 2A  
 No. of Common Pleas Court Judgeships: 13



<b>2012 Criminal</b>	<b>No. of Cases</b>
----------------------	---------------------

Cases Pending 1/1/2012	2,215
New Cases Filed in 2012	8,534
Reopened Cases	500
<b>Cases Available for Disposition</b>	<b>11,249</b>

**Disposed by:**

Withdrawn/Dismissed	209	2.4%
ARD	2,086	23.6%
Guilty Plea	5,704	64.6%
Non-Jury Trial	72	0.8%
Jury Trial	41	0.5%
Inactive	540	6.1%
Other	180	2.0%
<b>Total Cases Disposed</b>	<b>8,832</b>	<b>100.0%</b>

<b>Cases Pending 12/31/2012</b>	<b>2,417</b>
Cases Awaiting Sentencing	360

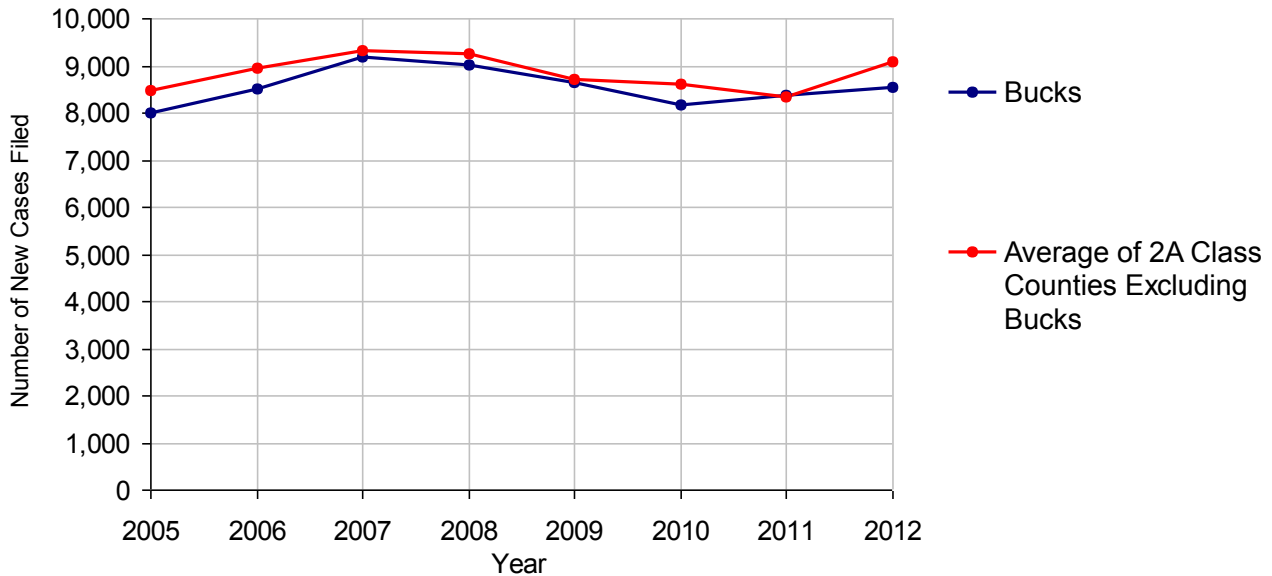
Data provided by CPCMS



**Age of Pending Cases as of 12/31/2012**

0-60 Days	1,305	54.0%
61-120 Days	706	29.2%
121-180 Days	187	7.7%
181-240 Days	91	3.8%
241-300 Days	36	1.5%
301-360 Days	26	1.1%
Over 360 Days	66	2.7%
<b>Total</b>	<b>2,417</b>	<b>100.0%</b>

**Criminal New Cases Filed, 2005-2012**

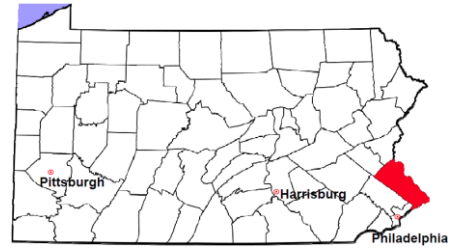


# Bucks County

2012 Population Estimate: 627,053

Class of County: 2A

No. of Common Pleas Court Judgeships: 13



## 2012 Criminal - New Cases by Case Type



Case Type	Felony	Misdemeanor	Summary /Ungraded	Total
Person	258	585	11	854
Property	1,011	1,334	6	2,351
Drug	441	1,321	0	1,762
Weapon	34	39	0	73
Public Order	124	438	8	570
Motor Vehicle - DWI/DUI	0	2,878	0	2,878
Motor Vehicle - Other	0	41	0	41
Other	3	2	0	5
<b>Total</b>	<b>1,871</b>	<b>6,638</b>	<b>25</b>	<b>8,534</b>
	<b>21.9%</b>	<b>77.8%</b>	<b>0.3%</b>	<b>100.0%</b>

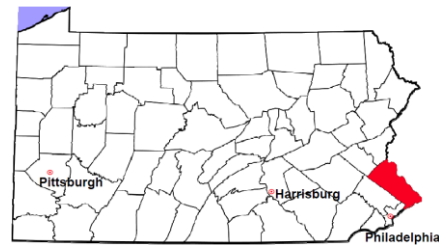
Data provided by CPCMS

# Bucks County

2012 Population Estimate: 627,053

Class of County: 2A

No. of Common Pleas Court Judgeships: 13



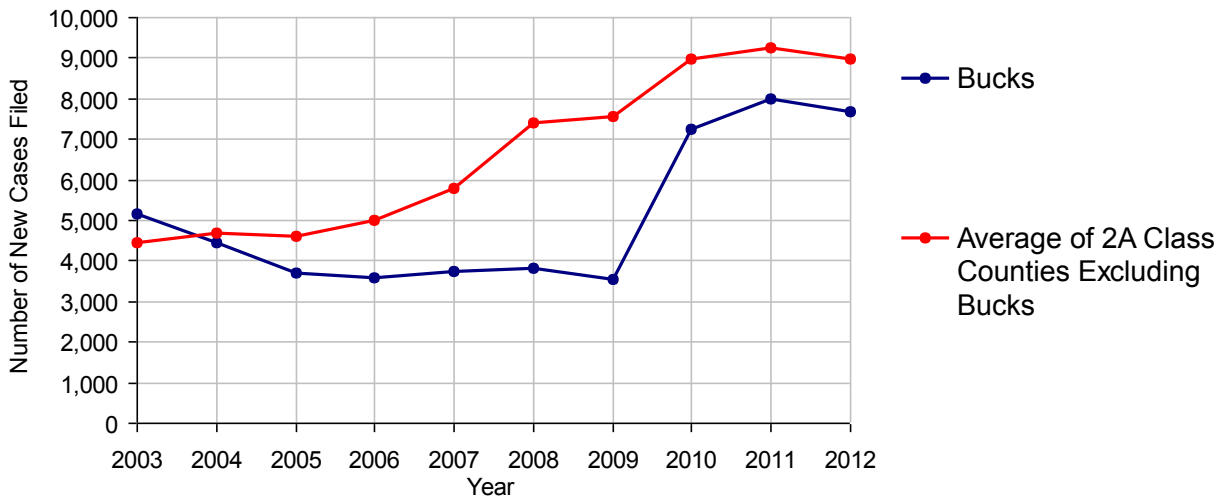
2012 Civil	Civil Action	Other	Total
Cases Pending 1/1/2012	16,268	1,183	17,451 (R)
Docketed Cases	4,694	2,998	7,692
Arbitration Appeals	83	1	84
Transferred In	38	0	38
Returned to Active	5	0	5
<b>Cases Available for Processing</b>	<b>21,088</b>	<b>4,182</b>	<b>25,270</b>
Disposed By:			
Default Judgments	1,670	1,095	2,765
Cases Decided by Arbitration Board	100	6	106
Dispositive Motions	2,105	1,030	3,135
Settlements	1,467	236	1,703
Moved to Inactive Status	119	19	138
Transferred/Withdrawn	1,271	381	1,652
Administrative Purge	1,769	0	1,769
Other	37	11	48
Jury Trial	40	1	41
Non-Jury Trial	11	4	15
<b>Total Cases Disposed</b>	<b>8,589</b>	<b>2,783</b>	<b>11,372</b>
<b>Cases Pending 12/31/2012</b>	<b>12,499</b>	<b>1,399</b>	<b>13,898</b>

### Age of Pending Cases as of 12/31/2012 (Civil Action Only)

0-6 months	1,706	13.6%
7-12 months	1,153	9.2%
13-18 months	861	6.9%
19-24 months	1,100	8.8%
25-30 months	1,057	8.5%
31-36 months	645	5.2%
37-42 months	494	4.0%
43-48 months	543	4.3%
49-54 months	640	5.1%
55-60 months	407	3.3%
61-66 months	252	2.0%
67-72 months	201	1.6%
Over 72 months	3,440	27.5%
<b>Total</b>	<b>12,499</b>	<b>100.0%</b>

(R) - Revised

Docketed Cases, 2003-2012



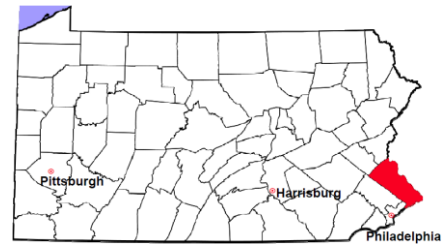
Note: Prior to June 2010, docketed cases under the "Other" category were not reported. The inclusion of these cases starting from June 2010 may contribute to an increase in docketed cases from 2009 to 2010.

# Bucks County

2012 Population Estimate: 627,053

Class of County: 2A

No. of Common Pleas Court Judgeships: 13



## 2012 Civil - Docketed Cases Listed by Case Type

### TORT 1,339 17.4%

*(does not include mass tort)*

Intentional	38
Malicious Prosecution	4
Motor Vehicle	788
Nuisance	3
Premise Liability	237
Product Liability	16
Slander/Libel/Defamation	4
Other	249

### MASS TORT 22 0.3%

Asbestos	22
Tobacco	0
Toxic Tort - DES	0
Toxic Tort - Implant	0
Toxic Waste	0
Other	0

### PROFESSIONAL LIABILITY 89 1.2%

Dental	7
Legal	12
Medical Malpractice	55
Other	15

### CONTRACT 3,194 41.5%

*(does not include judgments)*

Buyer Plaintiff	66
Debt Collection: Credit Card	1,668
Debt Collection: Other	1,102
Employment Dispute:	
Employment Dispute: Discriminatio	3
Employment Dispute: Other	26
Other	329

### REAL PROPERTY 2,143 27.9%

Ejectment*	178
Eminent Domain/Condemnation	26
Ground Rent	2
Landlord/Tenant Dispute	48
Mortgage Forclosures:	
Residential*	1,758
Commercial*	44
Partition of Real Property*	16
Quiet Title*	38
Other*	33

### CIVIL APPEALS 739 9.6%

*- Administrative Agencies*

Board of Assessment*	10
Board of Elections*	58
Dept. of Transportation*	216
Zoning Board*	22
Statutory Appeal - Other*	6
Other*	427

### MISCELLANEOUS 166 2.2%

Common Law/	
Statutory Arbitration*	1
Declaratory Judgment*	26
Mandamus*	4
Non-Domestic Relations	
Restraining Order*	43
Quo Warranto*	0
Replevin*	32
Other*	60

### TOTAL DOCKETED CASES: 7,692 100%

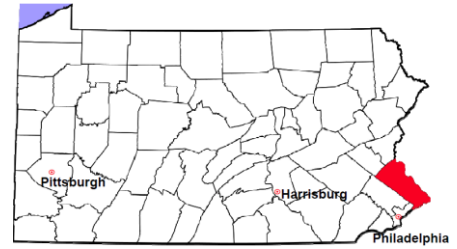
#### Of the Docketed Cases:

Pro Se Filings:	197	2.6%	Class Action Suits:	0	MDJ Appeals:	354	4.6%
-----------------	-----	------	---------------------	---	--------------	-----	------

\* Civil Other

# Bucks County

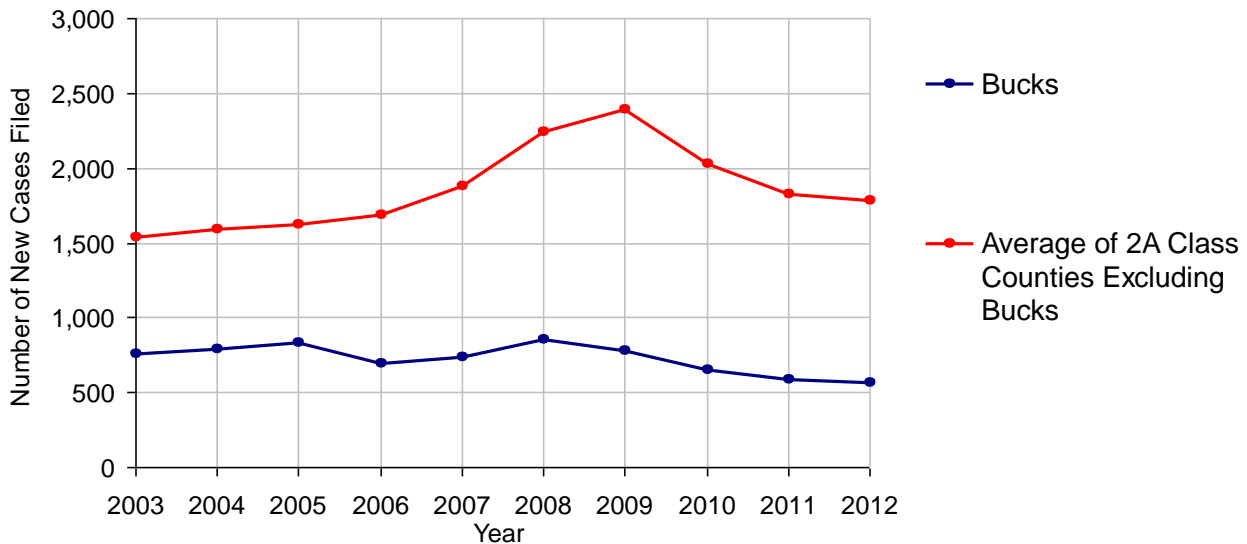
2012 Population Estimate: 627,053  
 Class of County: 2A  
 No. of Common Pleas Court Judgeships: 13



## 2012 Protection From Abuse

	No. of Petitions
Cases Pending 1/1/2012	72
New Cases Filed in 2012	568
<i>Of these, Petitions Requesting Temporary Orders: 568 (100.0%)</i>	
<i>Temporary Orders DENIED: 385 (67.8%), Temporary Orders GRANTED: 183 (32.2%)</i>	
<b>Cases Available for Processing</b>	<b>640</b>
Processed By:	
Temporary Order DENIED After Ex Parte Hearing and No Evidentiary Hearing Scheduled	2 0.4%
Temporary Order DISMISSED After Evidentiary Hearing and No Final Order Entered	65 12.8%
Final Order DENIED After Evidentiary Hearing Before a Judge	8 1.6%
Final Order GRANTED After Evidentiary Hearing Before a Judge	107 21.1%
Plaintiff Did Not Appear For Evidentiary Hearing	77 15.2%
Final Order by STIPULATION OR AGREEMENT Between the Parties	155 30.6%
Petition WITHDRAWN by Plaintiff	91 17.9%
TRANSFERRED to Another Jurisdiction	0
DECEASED Party	1 0.2%
Other	1 0.2%
<b>Cases Processed</b>	<b>507 100.0%</b>
<b>Cases Pending 12/31/2012</b>	<b>133</b>

**PFA New Cases Filed, 2003-2012**



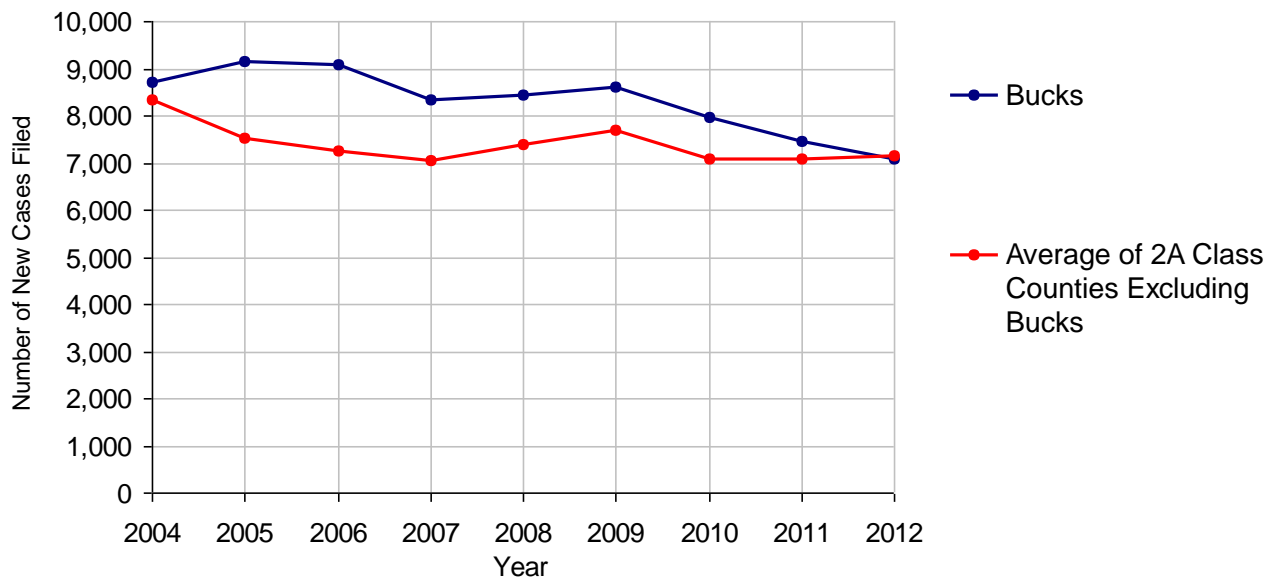
# Bucks County

2012 Population Estimate: 627,053  
 Class of County: 2A  
 No. of Common Pleas Court Judgeships: 13



<b>2012 Spousal &amp; Child Support</b>	<b>No. of Petitions</b>	
Cases Pending 1/1/2012	1,454	
New Cases Filed in 2012	7,084	
Dockets Transferred In (+)	60	
Dockets Transferred Out (-)	92	
<b>Cases Available for Processing</b>	<b>8,506</b>	
Processed By:		
Judge	998	13.7%
Intake Officer	6,261	86.3%
Hearing Officer	0	
Other	0	
<b>Cases Processed</b>	<b>7,259</b>	<b>100.0%</b>
<b>Cases Pending 12/31/2012</b>	<b>1,247</b>	

**Spousal & Child Support New Cases Filed, 2004-2012**

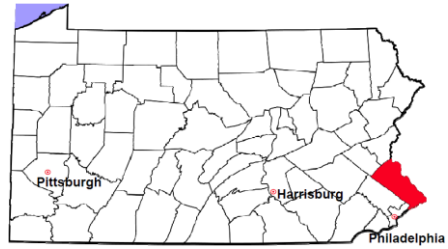


# Bucks County

2012 Population Estimate: 627,053

Class of County: 2A

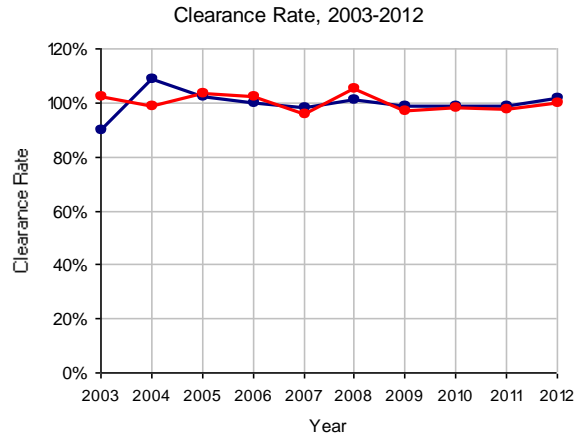
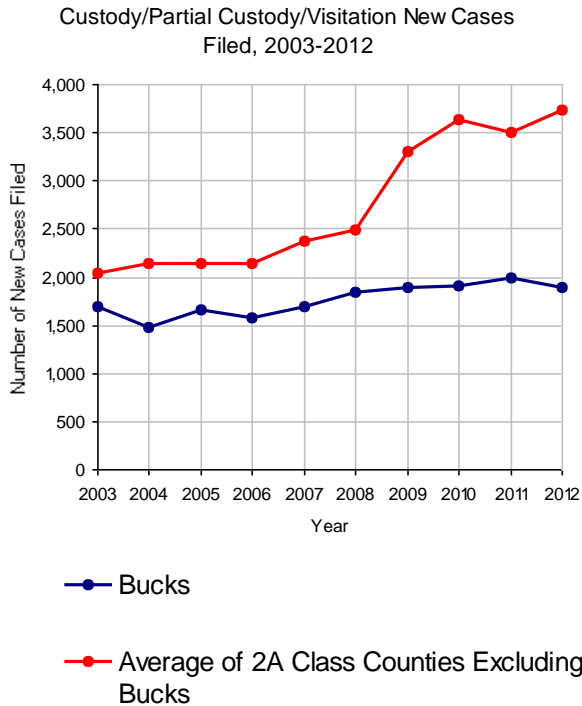
No. of Common Pleas Court Judgeships: 13



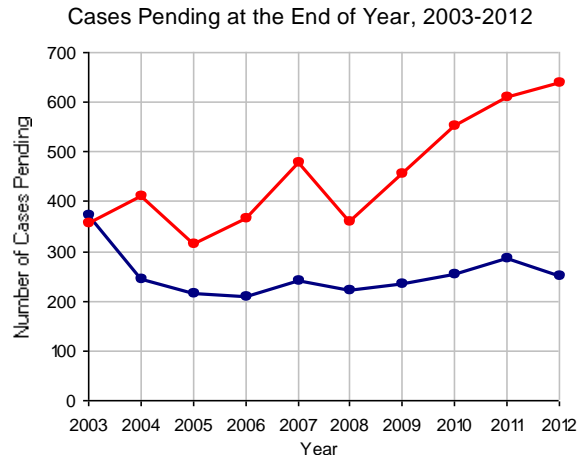
## 2012 Custody/Partial Custody/Visitation

No. of  
Petitions

Cases Pending 1/1/2012	285
New Cases Filed in 2012	1,898
<b>Cases Available for Processing</b>	<b>2,183</b>
Processed By:	
Judge	746 38.6%
Non-Judicial Officer	725 37.5%
Other	463 23.9%
<b>Cases Processed</b>	<b>1,934 100.0%</b>
<b>Cases Pending 12/31/2012</b>	<b>249</b>



Note: Clearance Rate = Cases Processed / New Cases Filed

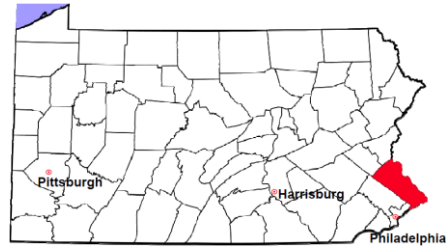


# Bucks County

2012 Population Estimate: 627,053

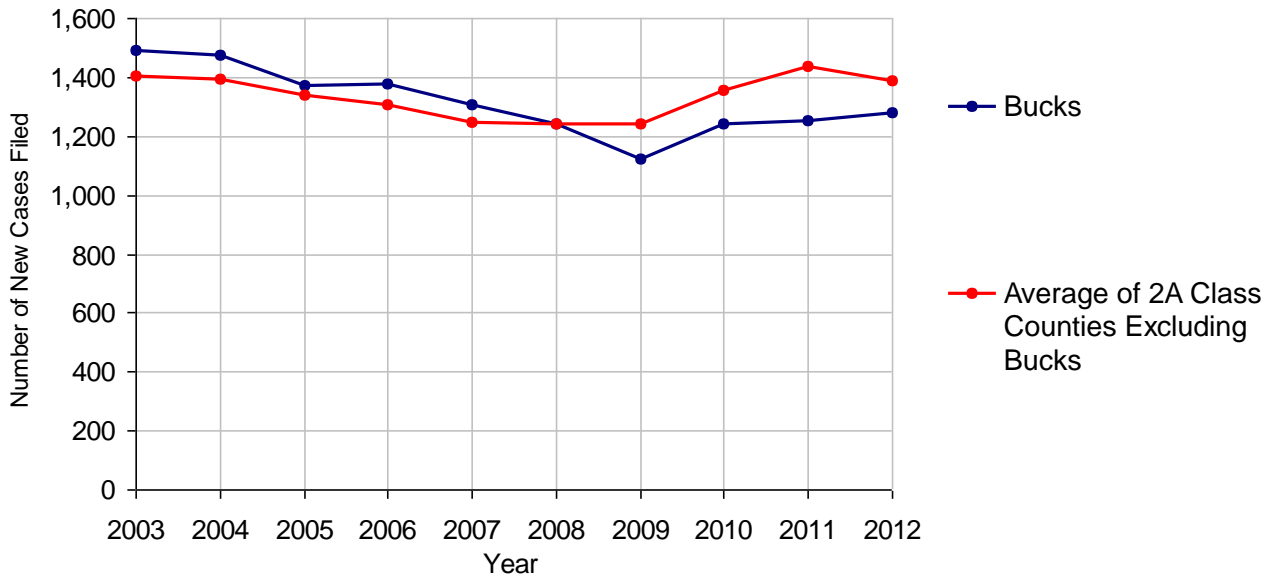
Class of County: 2A

No. of Common Pleas Court Judgeships: 13



<b>2012 Divorce</b>	<b>No. of Petitions</b>	
Cases Pending 1/1/2012	422	
New Cases Filed in 2012	1,278	
<b>Cases Available for Processing</b>	<b>1,700</b>	
Processed By:		
Contested Before a Judge	25	2.0%
Contested Before a Master	139	11.3%
Uncontested	1,064	86.6%
Other	0	
<b>Cases Processed</b>	<b>1,228</b>	<b>100.0%</b>
<b>Cases Pending 12/31/2012</b>	<b>472</b>	

**Divorce New Cases Filed, 2003-2012**



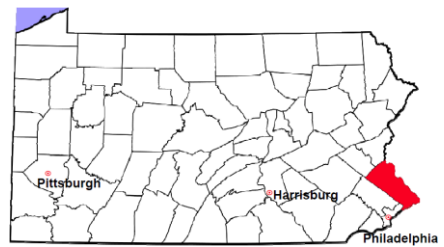


# Bucks County

2012 Population Estimate: 627,053

Class of County: 2A

No. of Common Pleas Court Judgeships: 13



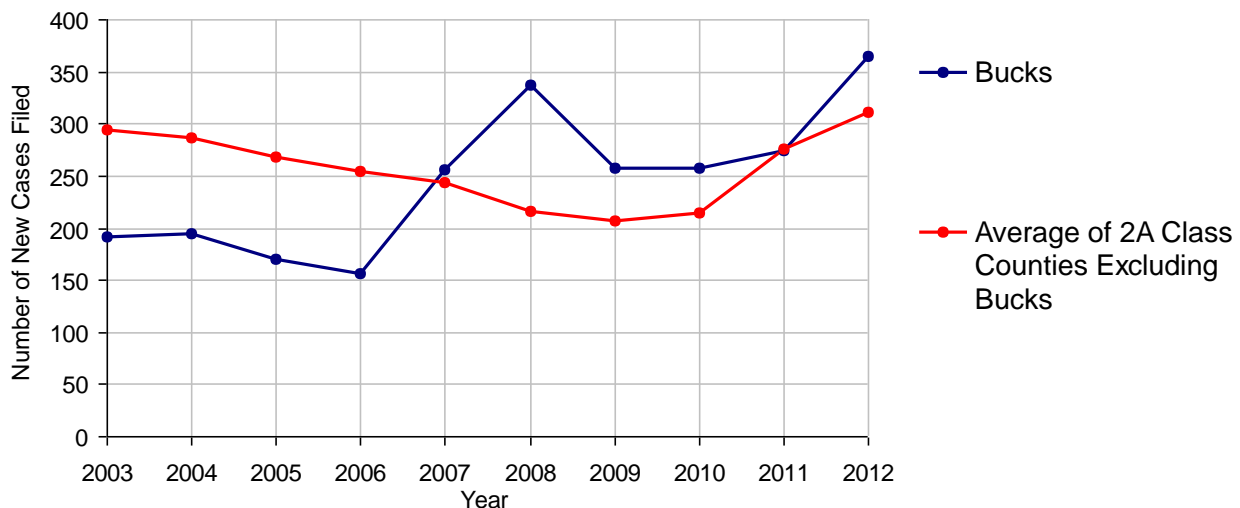
## 2012 Juvenile Dependency - Active Dependent Inventory



	Abuse/ Neglect	Status Offenses	Total
Cases Pending 1/1/2012	132	1	133
New Petitions Filed in 2012	365	0	365
Other	2	0	2
<b>Total Petitions Available for Processing</b>	<b>499</b>	<b>1</b>	<b>500</b>
Processed by:			
Adjudicated Dependent			
Judge	228	0	228
Master	0	0	0
Adjudicated NOT Dependent			
Judge	19	0	19
Master	0	0	0
Withdrawn/Dismissed/Inactive	136	0	136
Other	22	1	23
<b>Total Petitions Processed</b>	<b>405</b>	<b>1</b>	<b>406</b>
<b>Cases Pending 12/31/2012</b>	<b>94</b>	<b>0</b>	<b>94</b>

Data provided by CPCMS

Abuse/Neglect and Status Offenses New Cases Filed, 2003-2012



Note: Dependency data for 2002-2010 were collected manually. Dependency data for 2011 and 2012 were provided by CPCMS.

# Bucks County

2012 Population Estimate: 627,053

Class of County: 2A

No. of Common Pleas Court Judgeships: 13



## 2012 Juvenile Dependency - Adjudicated Dependent Inventory

	Abuse/ Neglect	Status Offenses	Total			
Cases Pending 1/1/2012	424	0	424			
New Adjudicated Dependent Cases	228	0	228			
Other	9	0	9			
<b>Total Adjudicated Dependent Cases</b>	<b>661</b>	<b>0</b>	<b>661</b>			
<b><u>Court Supervision Terminated:</u></b>						
Family Reunification	43	24.4%	0	43	24.4%	
Adoption	32	18.2%	0	32	18.2%	
Placement with a Relative/Guardian	68	38.6%	0	68	38.6%	
Aged Out	24	13.6%	0	24	13.6%	
Other Permanency Outcomes*	5	2.8%	0	5	2.8%	
Other**	4	2.3%	0	4	2.3%	
<b>Total Adjudicated Dependent Cases Terminated</b>	<b>176</b>	<b>100.0%</b>	<b>0</b>	<b>100.0%</b>	<b>176</b>	<b>100.0%</b>
<b>Cases Pending 12/31/2012</b>	<b>485</b>		<b>0</b>		<b>485</b>	

Data provided by CPCMS

\* Other Permanency Outcomes include: adjudicated delinquent, death due to natural causes, death due to negligence, emancipation, permanent living arrangement, and parent has come forward.

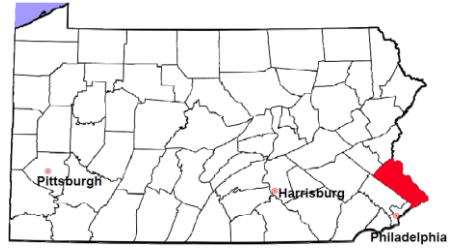
\*\* Other includes cases where court supervision is terminated due to transfer out of jurisdiction, withdrawal and administrative closure.

# Bucks County

2012 Population Estimate: 627,053

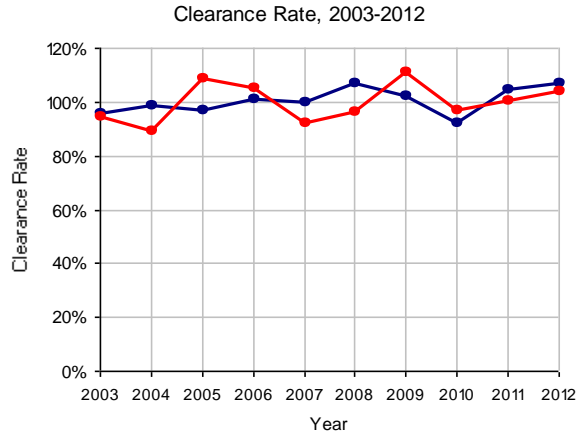
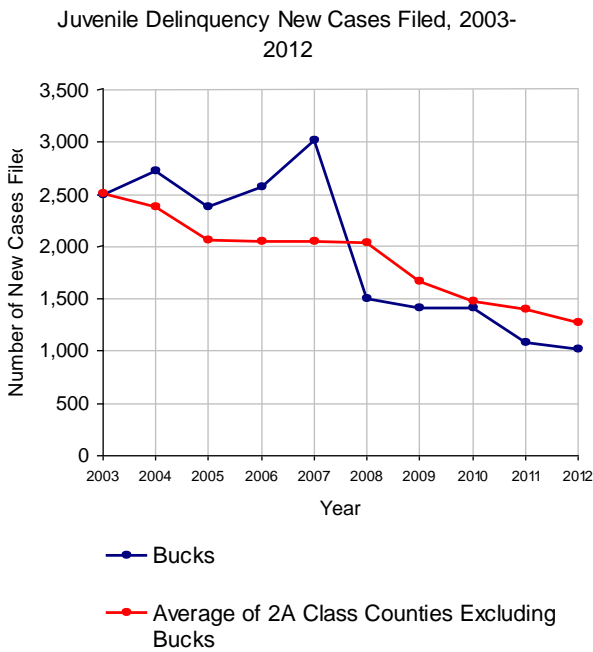
Class of County: 2A

No. of Common Pleas Court Judgeships: 13

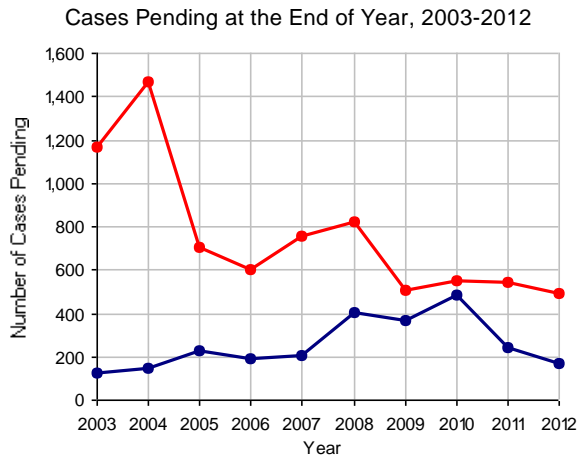


## 2012 Juvenile Delinquency

	No. of Cases
Cases Pending 1/1/2012	243
New Cases Filed in 2012	1,018
<b>Cases Available for Processing</b>	<b>1,261</b>
Processed By:	
Judge	796 73.1%
Non-Judicial Officer	293 26.9%
Other	0
<b>Cases Processed</b>	<b>1,089 100.0%</b>
<b>Cases Pending 12/31/2012</b>	<b>172</b>



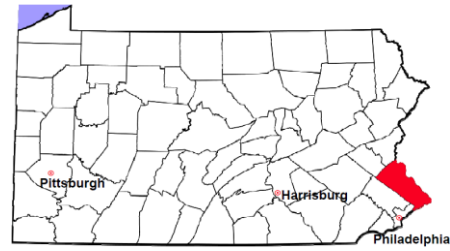
Note: Clearance Rate = Cases Processed / New Cases Filed



Note: The significant drop in new cases filed from 2007 to 2008 reflects a change in reporting methods.

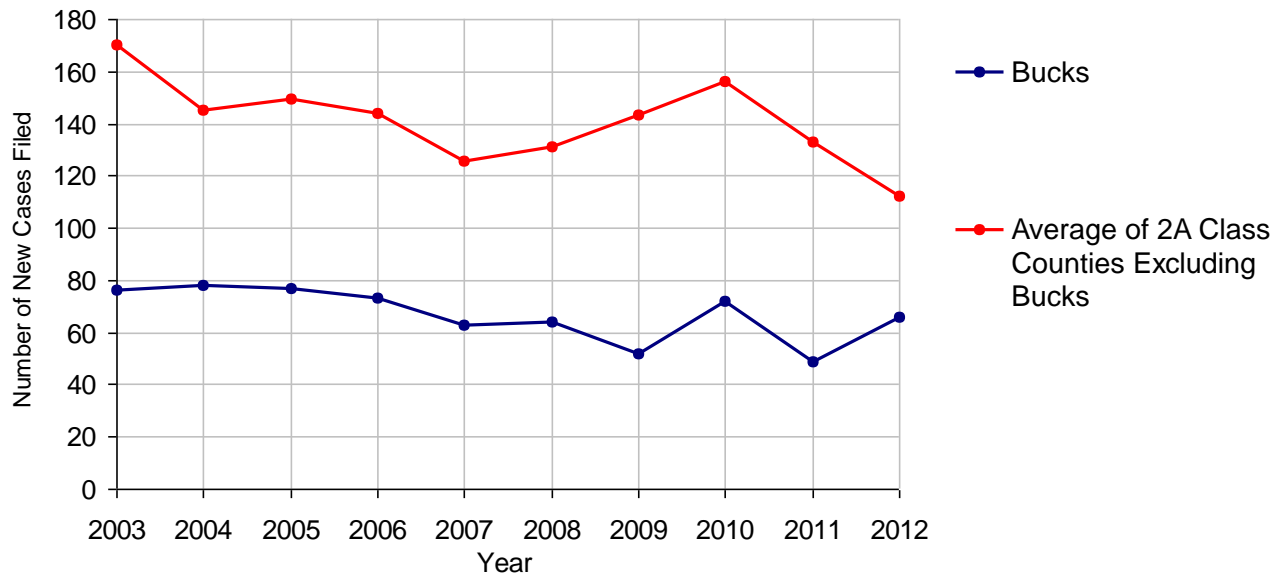
# Bucks County

2012 Population Estimate: 627,053  
 Class of County: 2A  
 No. of Common Pleas Court Judgeships: 13



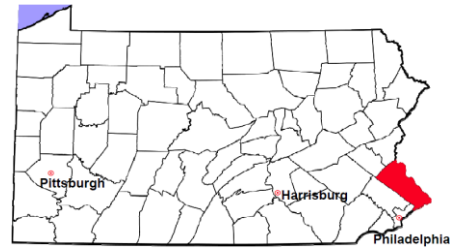
<b>2012 Accounts</b>	<b>No. of Cases</b>	
Cases Pending 1/1/2012	56	
New Cases Filed in 2012	66	
<b>Cases Available for Processing</b>	<b>122</b>	
Processed By:		
Contested before a Judge	7	15.2%
Contested before a Non-judicial Officer	0	
Uncontested	37	80.4%
Other	2	4.3%
<b>Cases Processed</b>	<b>46</b>	<b>100.0%</b>
<b>Cases Pending 12/31/2012</b>	<b>76</b>	

**Accounts New Cases Filed, 2003-2012**



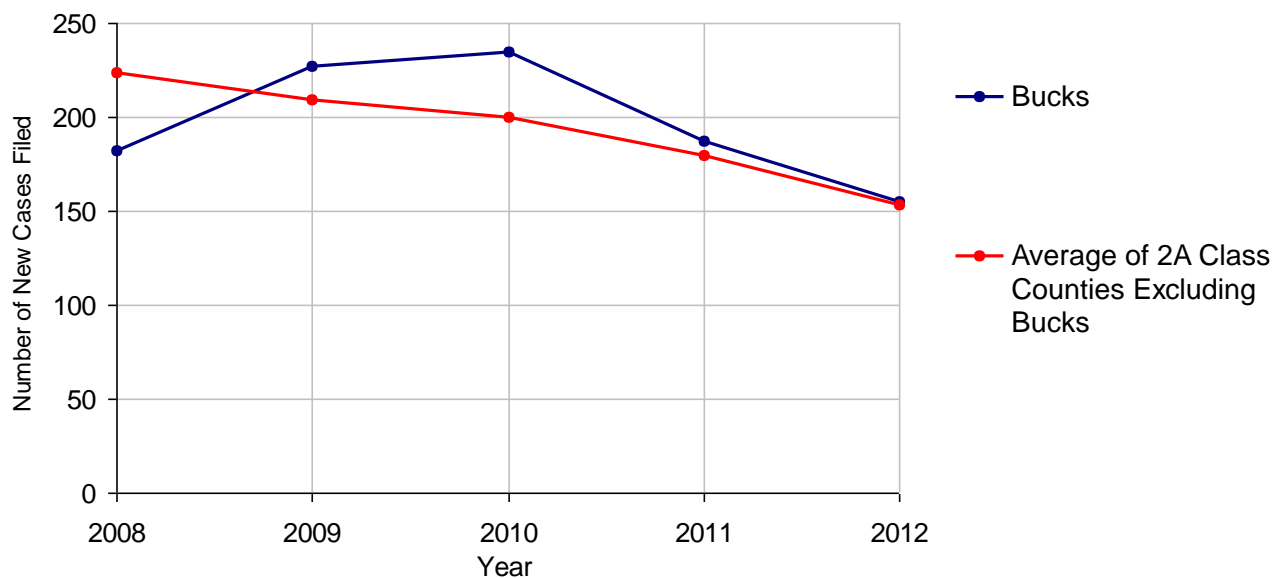
# Bucks County

2012 Population Estimate: 627,053  
 Class of County: 2A  
 No. of Common Pleas Court Judgeships: 13



<b>2012 Adoptions</b>		<b>No. of Cases</b>	
Cases Pending 1/1/2012		87	
New Cases Filed in 2012		155	
<b>Cases Available for Processing</b>		<b>242</b>	
Processed By:			
Contested before a Judge	Granted	0	
	Denied	0	
Uncontested	Granted	125	89.3%
	Denied	0	
Other		15	10.7%
<b>Cases Processed</b>		<b>140</b>	<b>100.0%</b>
<b>Cases Pending 12/31/2012</b>		<b>102</b>	

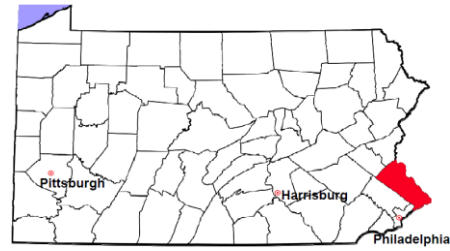
**Adoptions New Cases Filed, 2008-2012**



Note: Prior to 2008, each petition was counted as one new case, regardless of the number of children listed on the petition. Starting in 2008, each child listed on a petition is counted as a separate case. Therefore, statistics since 2008 should not be compared to statistics prior to 2008.

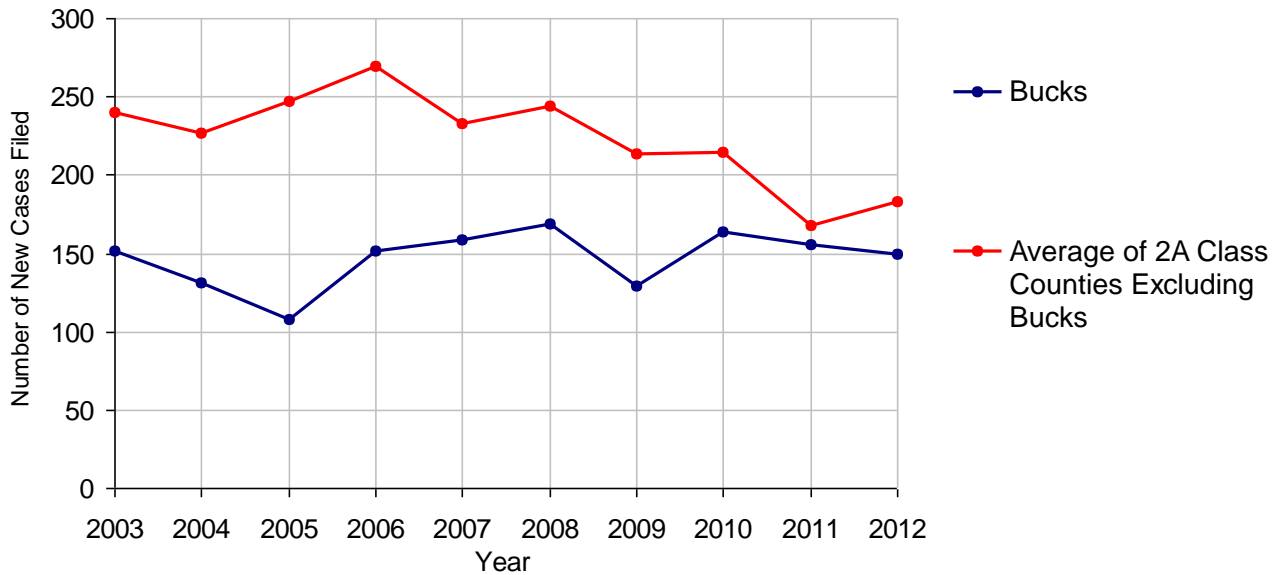
# Bucks County

2012 Population Estimate: 627,053  
 Class of County: 2A  
 No. of Common Pleas Court Judgeships: 13



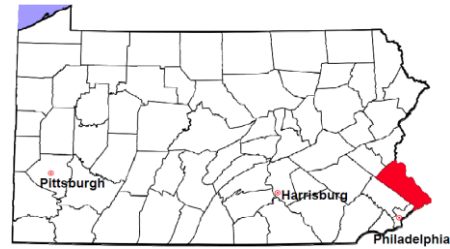
2012 Relinquishments/Terminations	No. of Cases	
Cases Pending 1/1/2012	88	
New Cases Filed in 2012	149	
<b>Cases Available for Processing</b>	<b>237</b>	
Processed By:		
Contested before a Judge	30	20.5%
Uncontested	84	57.5%
Other	32	21.9%
<b>Cases Processed</b>	<b>146</b>	<b>100.0%</b>
<b>Cases Pending 12/31/2012</b>	<b>91</b>	

Relinquishments/Terminations New Cases Filed, 2003-2012



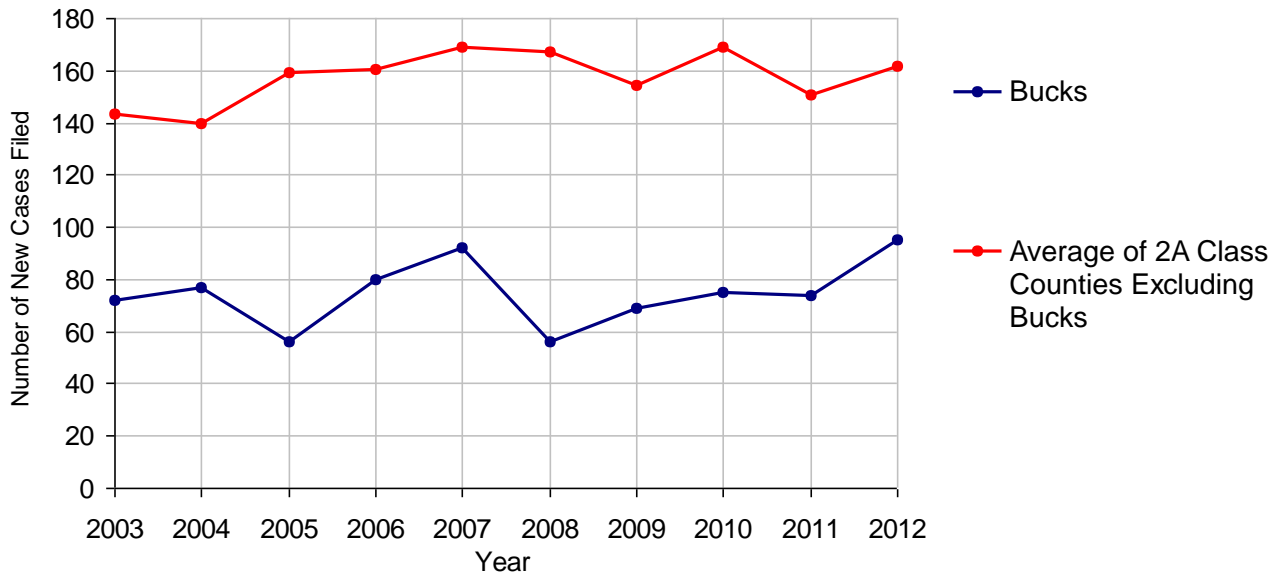
# Bucks County

2012 Population Estimate: 627,053  
 Class of County: 2A  
 No. of Common Pleas Court Judgeships: 13



<b>2012 Appointment of Guardians</b>	<b>No. of Cases</b>
Cases Pending 1/1/2012	38
New Cases Filed in 2012	95
<b>Cases Available for Processing</b>	<b>133</b>
Processed By:	
Contested before a Judge	8      9.3%
Uncontested	64      74.4%
Other	14      16.3%
<b>Cases Processed</b>	<b>86      100.0%</b>
<b>Cases Pending 12/31/2012</b>	<b>47</b>

**Appointment of Guardians New Cases Filed, 2003-2012**



# Bucks County

2012 Population Estimate: 627,053  
 Class of County: 2A  
 No. of Common Pleas Court Judgeships: 13



## 2012 Jury Yield and Utilization

### Jury Yield

Qualification Questionnaires/Summonses Mailed:	35,175	A		
Returned Undeliverable:	4,358	B	12.4%	Of Qualification Questionnaires/Summonses Mailed
Not Responded to:	4,380	C	12.5%	
the Number of Prospective Jurors:				
Disqualified:	3,259	D	9.3%	
Exempted:	5,061	E	14.4%	
Excused:	3,735	F	10.6%	
Deferred to New Term:	2,996	G	8.5%	
Deferred from Previous Term:	43	H	0.1%	
<b>Total Number of Qualified Jurors Available for Service:</b>	<b>11,429</b>	<b>I</b>	<b>32.5%</b>	

*I=A-B-C-D-E-F-G+H*

### Jury Utilization

the Number of Jurors:				
Reporting for Service:	9,205		80.5%	Of Jurors Qualified and Available
Told Not to Report for Service:	3,589		31.4%	
Sent to Courtroom for Jury Selection (Voir Dire):	3,862		42.0%	Of Jurors Reporting for Service
Impanelled or Sworn (jurors/alternates):	1,138		12.4%	
Removed for Cause/Hardship:	730			
Removed by Peremptory Challenge:	873			

### Jury Costs

Total Annual Budget for Juror Operations:	\$534,981.00	J
Average Cost Per Juror:	\$15.21	K

*K=J/A*

In mid-2011, AOPC began utilizing the National Center for State Courts' Jury Managers' Toolbox for collecting jury data. In 2012, the counties began providing additional jury data which included information about the summoning practices in the counties. With this additional data, we can now see not only how many citizens come to our courthouses every day in anticipation of serving on a jury, but the number of citizens actually summonsed and the number of those summonsed who are exempt, excused or disqualified from service. With this wider view of the jury process, we can determine the efficiency with which our courts operate, and with the assistance of the Jury Managers' Toolbox find guidance in streamlining the jury summonsing practices.