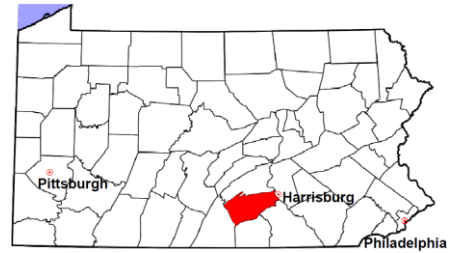


Cumberland County

2012 Population Estimate: 238,614
 Class of County: 3rd
 No. of Common Pleas Court Judgeships: 6



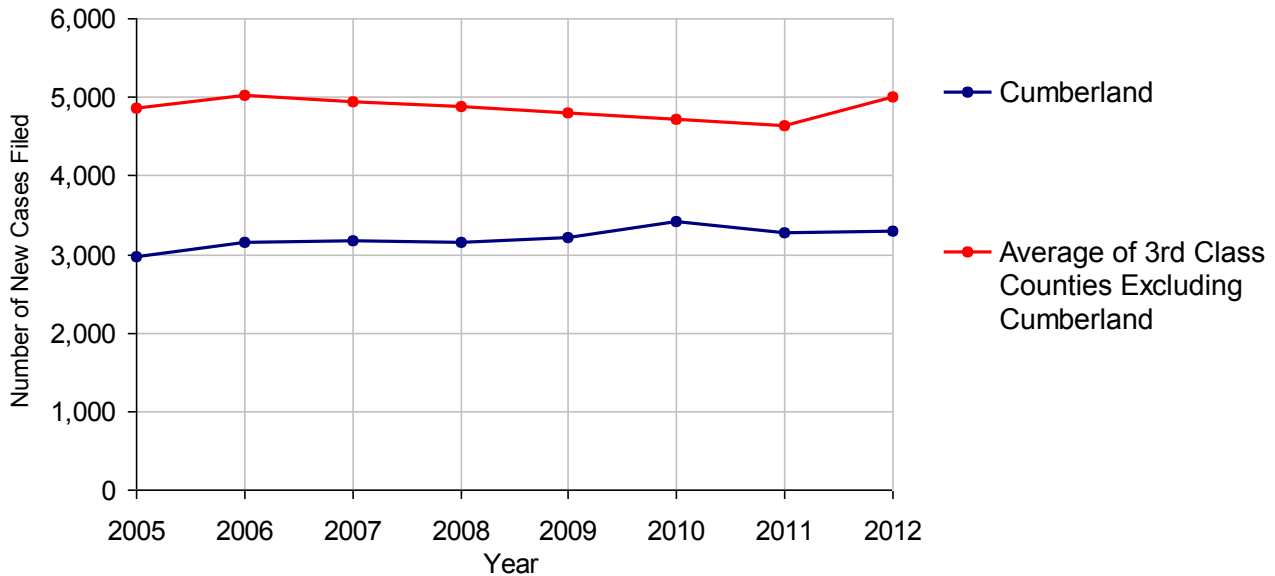
2012 Criminal	No. of Cases
Cases Pending 1/1/2012	1,862
New Cases Filed in 2012	3,285
Reopened Cases	136
Cases Available for Disposition	5,283
Disposed by:	
Withdrawn/Dismissed	146 4.3%
ARD	999 29.5%
Guilty Plea	1,964 58.0%
Non-Jury Trial	22 0.6%
Jury Trial	47 1.4%
Inactive	104 3.1%
Other	104 3.1%
Total Cases Disposed	3,386 100.0%
Cases Pending 12/31/2012	1,897
Cases Awaiting Sentencing	271



Age of Pending Cases as of 12/31/2012		
0-60 Days	525	27.7%
61-120 Days	452	23.8%
121-180 Days	351	18.5%
181-240 Days	150	7.9%
241-300 Days	144	7.6%
301-360 Days	84	4.4%
Over 360 Days	191	10.1%
Total	1,897	100.0%

Data provided by CPCMS

Criminal New Cases Filed, 2005-2012

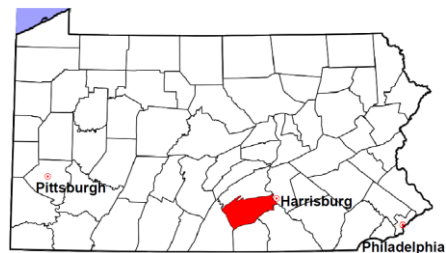


Cumberland County

2012 Population Estimate: 238,614

Class of County: 3rd

No. of Common Pleas Court Judgeships: 6



2012 Criminal - New Cases by Case Type

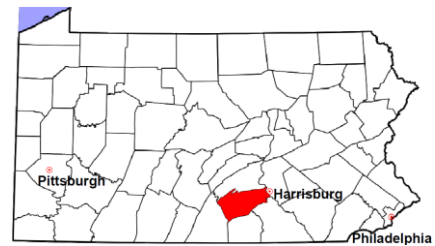


Case Type	Felony	Misdemeanor	Summary /Ungraded	Total
Person	158	326	3	487
Property	426	477	16	919
Drug	150	248	2	400
Weapon	17	11	0	28
Public Order	57	128	0	185
Motor Vehicle - DWI/DUI	0	1,243	0	1,243
Motor Vehicle - Other	1	19	2	22
Other	0	1	0	1
Total	809	2,453	23	3,285
	24.6%	74.7%	0.7%	100.0%

Data provided by CPCMS

Cumberland County

2012 Population Estimate: 238,614
 Class of County: 3rd
 No. of Common Pleas Court Judgeships: 6



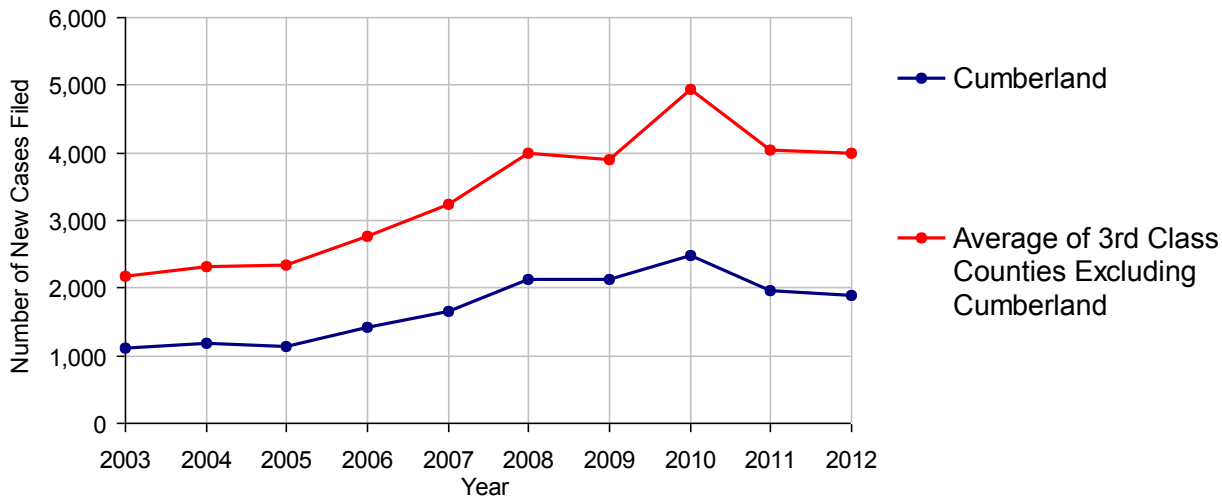
2012 Civil	Civil Action	Other	Total
Cases Pending 1/1/2012	2,769	1,989	4,758 (R)
Docketed Cases	1,123	765	1,888
Arbitration Appeals	7	3	10
Transferred In	24	53	77
Returned to Active	0	0	0
Cases Available for Processing	3,923	2,810	6,733
Disposed By:			
Default Judgments	38	526	564
Cases Decided by Arbitration Board	24	33	57
Dispositive Motions	0	0	0
Settlements	362	251	613
Moved to Inactive Status	0	0	0
Transferred/Withdrawn	30	31	61
Administrative Purge	350	62	412
Other	17	34	51
Jury Trial	4	6	10
Non-Jury Trial	2	1	3
Total Cases Disposed	827	944	1,771
Cases Pending 12/31/2012	3,096	1,866	4,962

Age of Pending Cases as of 12/31/2012 (Civil Action Only)

0-6 months	503	16.2%
7-12 months	517	16.7%
13-18 months	480	15.5%
19-24 months	446	14.4%
25-30 months	719	23.2%
31-36 months	104	3.4%
37-42 months	45	1.5%
43-48 months	21	0.7%
49-54 months	51	1.6%
55-60 months	48	1.6%
61-66 months	36	1.2%
67-72 months	21	0.7%
Over 72 months	105	3.4%
Total	3,096	100.0%

(R) - Revised

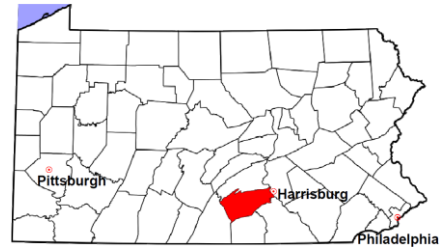
Docketed Cases, 2003-2012



Note: Prior to June 2010, docketed cases under the "Other" category were not reported. The inclusion of these cases starting from June 2010 may contribute to an increase in docketed cases from 2009 to 2010.

Cumberland County

2012 Population Estimate: 238,614
 Class of County: 3rd
 No. of Common Pleas Court Judgeships: 6



2012 Civil - Docketed Cases Listed by Case Type

TORT	244	12.9%
<i>(does not include mass tort)</i>		
Intentional	14	
Malicious Prosecution	1	
Motor Vehicle	154	
Nuisance	1	
Premise Liability	26	
Product Liability	5	
Slander/Libel/Defamation	7	
Other	36	
MASS TORT	0	
Asbestos	0	
Tobacco	0	
Toxic Tort - DES	0	
Toxic Tort - Implant	0	
Toxic Waste	0	
Other	0	
PROFESSIONAL LIABILITY	31	1.6%
Dental	0	
Legal	3	
Medical Malpractice	21	
Other	7	
CONTRACT	803	42.5%
<i>(does not include judgments)</i>		
Buyer Plaintiff	20	
Debt Collection: Credit Card	364	
Debt Collection: Other	311	
Employment Dispute:		
Employment Dispute: Discriminatio	0	
Employment Dispute: Other	21	
Other	87	

REAL PROPERTY	606	32.1%
Ejectment*	41	
Eminent Domain/Condemnation	13	
Ground Rent	3	
Landlord/Tenant Dispute	42	
Mortgage Foreclosure:		
Residential*	438	
Commercial*	29	
Partition of Real Property*	8	
Quiet Title*	14	
Other*	18	
CIVIL APPEALS	127	6.7%
<i>- Administrative Agencies</i>		
Board of Assessment*	17	
Board of Elections*	0	
Dept. of Transportation*	62	
Zoning Board*	3	
Statutory Appeal - Other*	7	
Other*	38	
MISCELLANEOUS	77	4.1%
Common Law/		
Statutory Arbitration*	2	
Declaratory Judgment*	10	
Mandamus*	0	
Non-Domestic Relations		
Restraining Order*	1	
Quo Warranto*	0	
Replevin*	10	
Other*	54	
TOTAL DOCKETED CASES:	1,888	100%

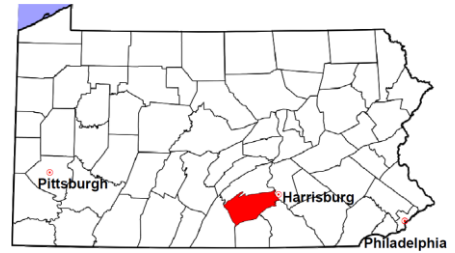
Of the Docketed Cases:

Pro Se Filings: 148 7.8% Class Action Suits: 11 0.6% MDJ Appeals: 146 7.7%

* Civil Other

Cumberland County

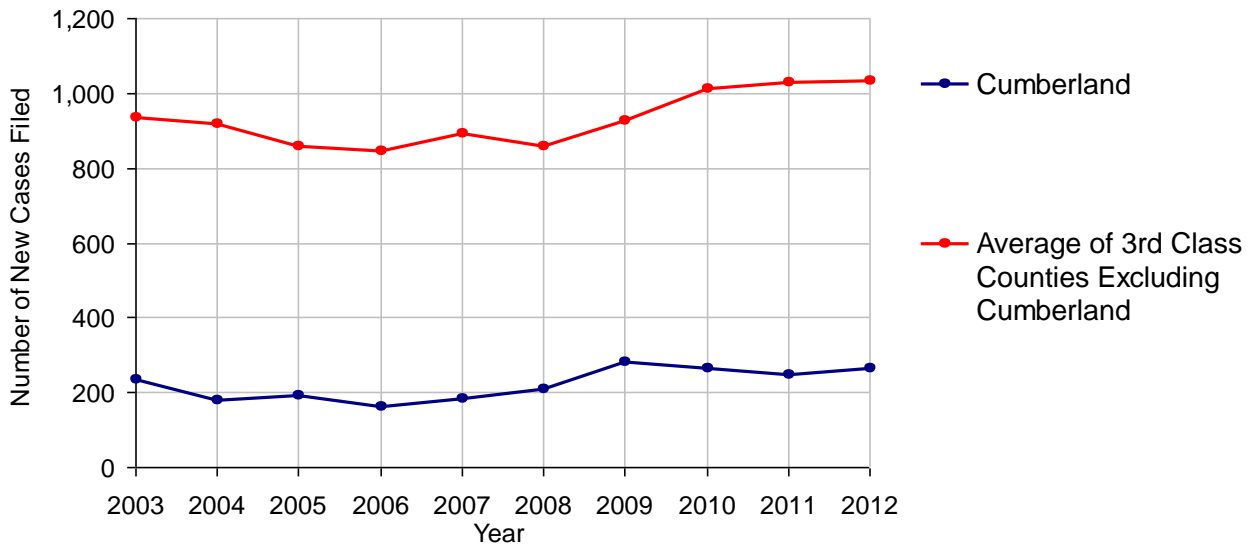
2012 Population Estimate: 238,614
 Class of County: 3rd
 No. of Common Pleas Court Judgeships: 6



2012 Protection From Abuse

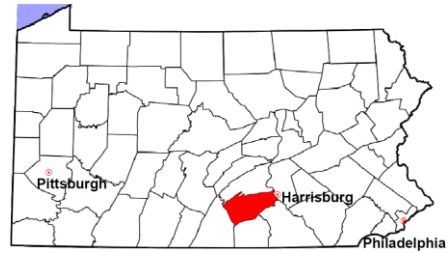
	No. of Petitions
Cases Pending 1/1/2012	85
New Cases Filed in 2012	266
<i>Of these, Petitions Requesting Temporary Orders: 260 (97.7%)</i>	
<i>Temporary Orders DENIED: 11 (4.2%), Temporary Orders GRANTED: 249 (95.8%)</i>	
Cases Available for Processing	351
Processed By:	
Temporary Order DENIED After Ex Parte Hearing and No Evidentiary Hearing Scheduled	8 3.3%
Temporary Order DISMISSED After Evidentiary Hearing and No Final Order Entered	7 2.9%
Final Order DENIED After Evidentiary Hearing Before a Judge	6 2.5%
Final Order GRANTED After Evidentiary Hearing Before a Judge	153 62.7%
Plaintiff Did Not Appear For Evidentiary Hearing	5 2.0%
Final Order by STIPULATION OR AGREEMENT Between the Parties	9 3.7%
Petition WITHDRAWN by Plaintiff	54 22.1%
TRANSFERRED to Another Jurisdiction	1 0.4%
DECEASED Party	0
Other	1 0.4%
Cases Processed	244 100.0%
Cases Pending 12/31/2012	107

PFA New Cases Filed, 2003-2012



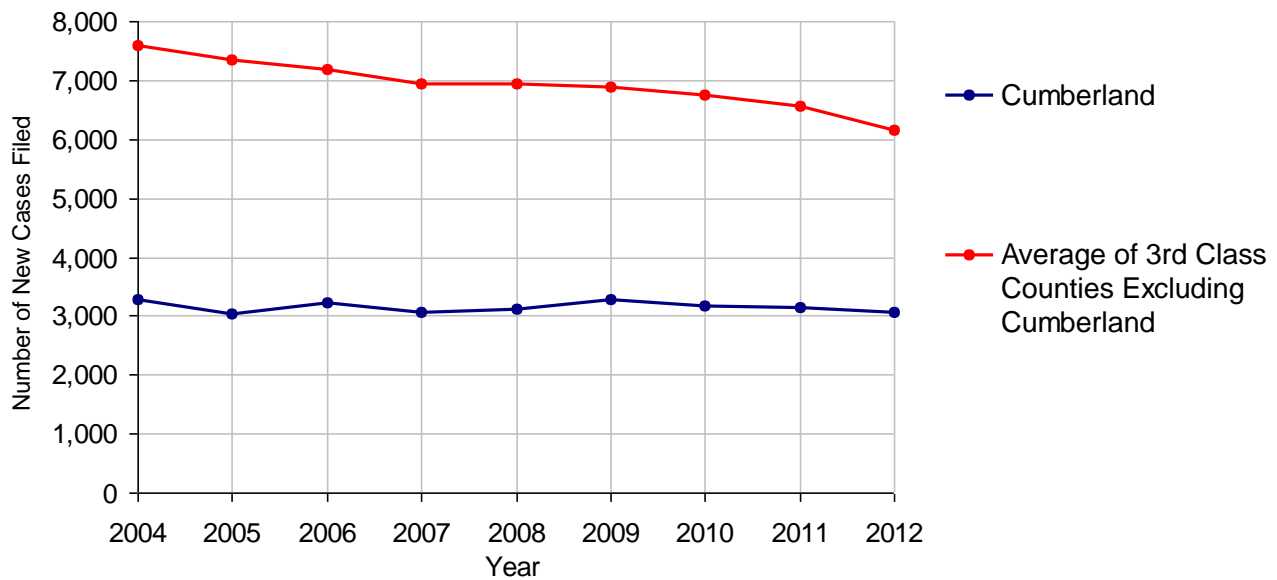
Cumberland County

2012 Population Estimate: 238,614
 Class of County: 3rd
 No. of Common Pleas Court Judgeships: 6



2012 Spousal & Child Support	No. of Petitions	
Cases Pending 1/1/2012	375	
New Cases Filed in 2012	3,068	
Dockets Transferred In (+)	43	
Dockets Transferred Out (-)	47	
Cases Available for Processing	3,439	
Processed By:		
Judge	43	1.4%
Intake Officer	2,829	91.9%
Hearing Officer	206	6.7%
Other	0	
Cases Processed	3,078	100.0%
Cases Pending 12/31/2012	361	

Spousal & Child Support New Cases Filed, 2004-2012

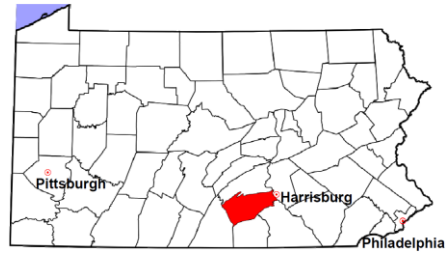


Cumberland County

2012 Population Estimate: 238,614

Class of County: 3rd

No. of Common Pleas Court Judgeships: 6



2012 Custody/Partial Custody/Visitation

No. of
Petitions

Cases Pending 1/1/2012

426

New Cases Filed in 2012

745

Cases Available for Processing

1,171

Processed By:

Judge

108

13.1%

Non-Judicial Officer

480

58.1%

Other

238

28.8%

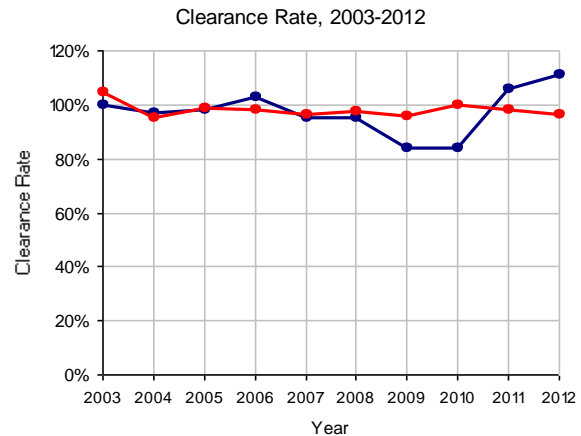
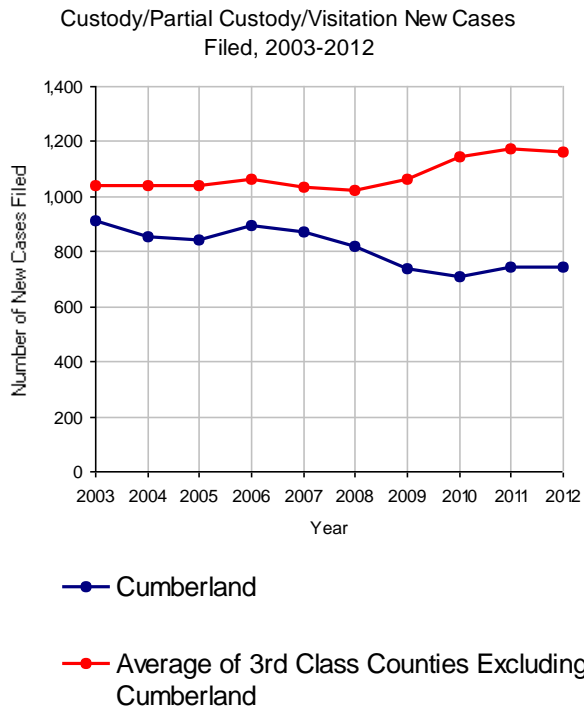
Cases Processed

826

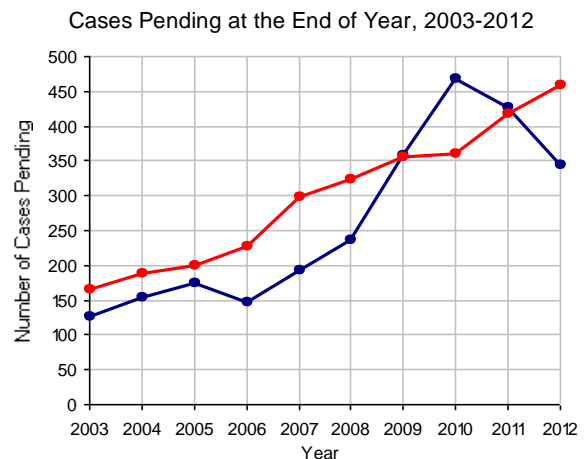
100.0%

Cases Pending 12/31/2012

345

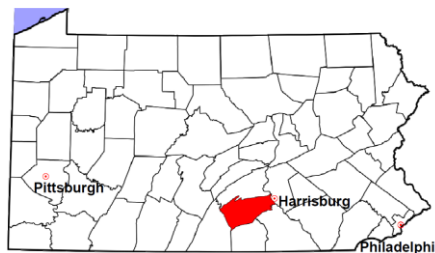


Note: Clearance Rate = Cases Processed / New Cases Filed



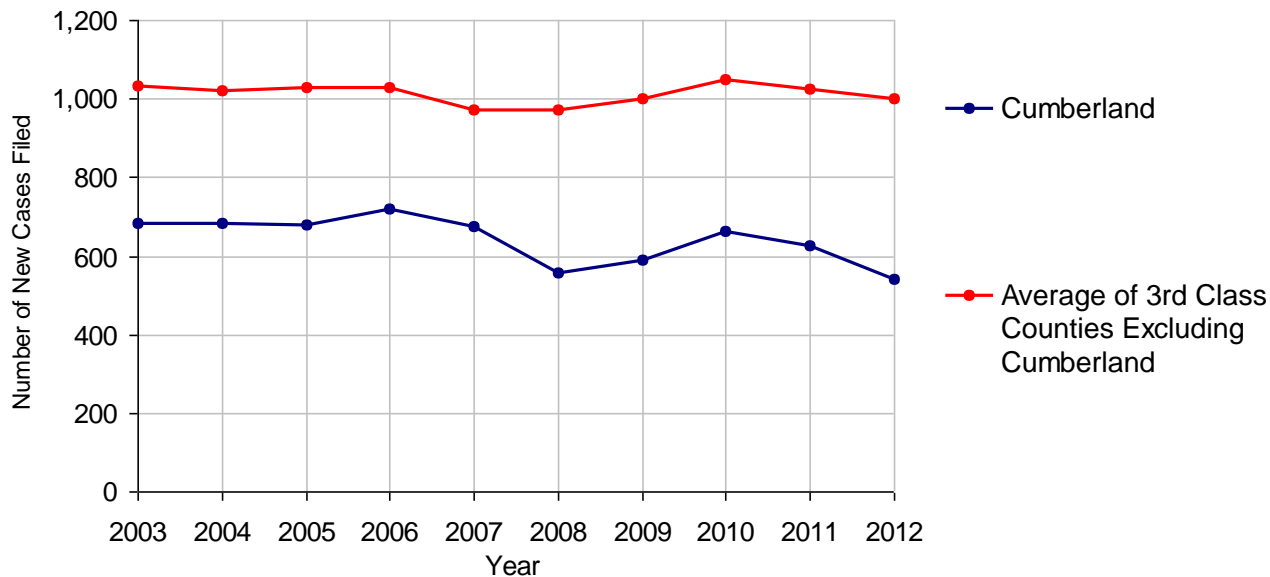
Cumberland County

2012 Population Estimate: 238,614
 Class of County: 3rd
 No. of Common Pleas Court Judgeships: 6



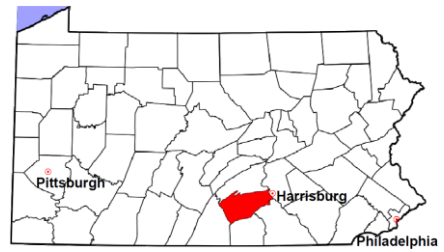
2012 Divorce	No. of Petitions	
Cases Pending 1/1/2012	1,015	
New Cases Filed in 2012	542	
Cases Available for Processing	1,557	
Processed By:		
Contested Before a Judge	1	0.1%
Contested Before a Master	108	14.5%
Uncontested	585	78.4%
Other	52	7.0%
Cases Processed	746	100.0%
Cases Pending 12/31/2012	811	

Divorce New Cases Filed, 2003-2012



Cumberland County

2012 Population Estimate: 238,614
 Class of County: 3rd
 No. of Common Pleas Court Judgeships: 6

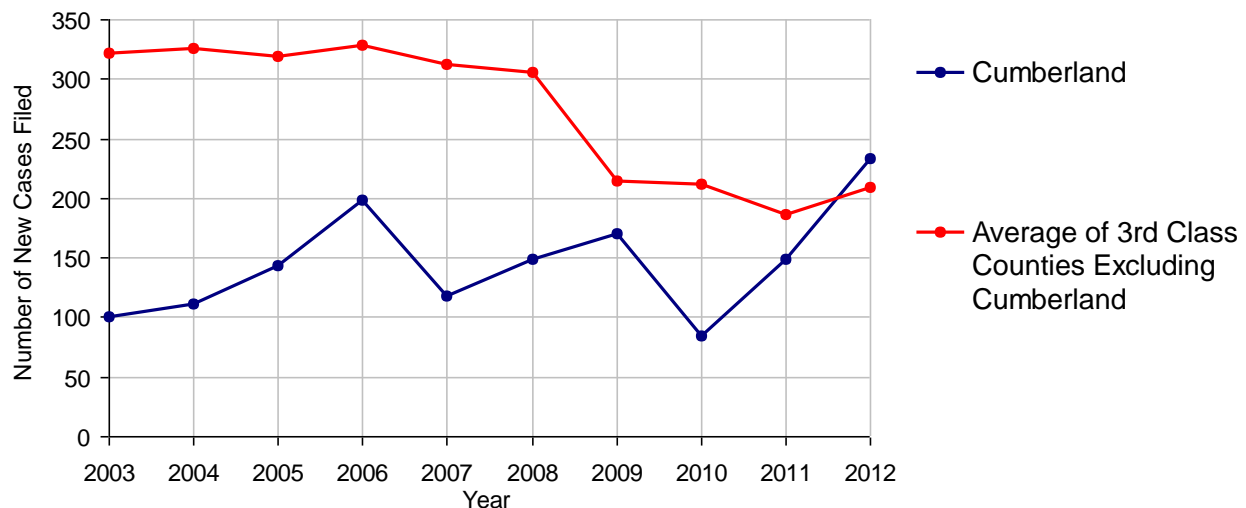


2012 Juvenile Dependency - Active Dependent Inventory

	Abuse/ Neglect	Status Offenses	Total
Cases Pending 1/1/2012	15	2	17
New Petitions Filed in 2012	229	5	234
Other	8	1	9
Total Petitions Available for Processing	252	8	260
Processed by:			
Adjudicated Dependent			
Judge	2	0	2
Master	144	5	149
Adjudicated NOT Dependent			
Judge	1	0	1
Master	71	0	71
Withdrawn/Dismissed/Inactive	0	0	0
Other	12	1	13
Total Petitions Processed	230	6	236
Cases Pending 12/31/2012	22	2	24

Data provided by CPCMS

Abuse/Neglect and Status Offenses New Cases Filed, 2003-2012



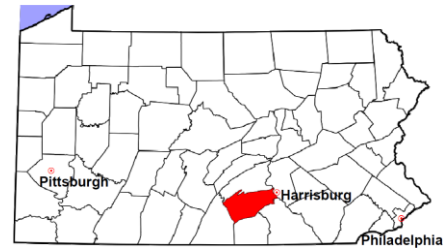
Note: Dependency data for 2002-2010 were collected manually. Dependency data for 2011 and 2012 were provided by CPCMS.

Cumberland County

2012 Population Estimate: 238,614

Class of County: 3rd

No. of Common Pleas Court Judgeships: 6



2012 Juvenile Dependency - Adjudicated Dependent Inventory



	Abuse/ Neglect	Status Offenses	Total
Cases Pending 1/1/2012	156	12	168
New Adjudicated Dependent Cases	146	5	151
Other	10	1	11
Total Adjudicated Dependent Cases	312	18	330

Court Supervision Terminated:

Family Reunification	18	14.2%	1	8.3%	19	13.7%
Adoption	31	24.4%	0		31	22.3%
Placement with a Relative/Guardian	51	40.2%	6	50.0%	57	41.0%
Aged Out	10	7.9%	3	25.0%	13	9.4%
Other Permanency Outcomes*	5	3.9%	0		5	3.6%
Other**	12	9.4%	2	16.7%	14	10.1%
Total Adjudicated Dependent Cases Terminated	127	100.0%	12	100.0%	139	100.0%
Cases Pending 12/31/2012	185		6		191	

Data provided by CPCMS

* Other Permanency Outcomes include: adjudicated delinquent, death due to natural causes, death due to negligence, emancipation, permanent living arrangement, and parent has come forward.

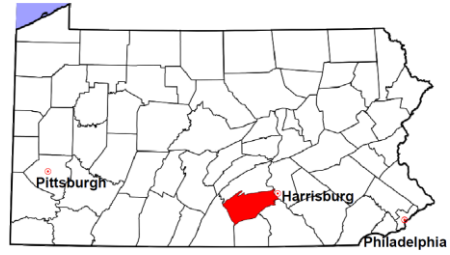
** Other includes cases where court supervision is terminated due to transfer out of jurisdiction, withdrawal and administrative closure.

Cumberland County

2012 Population Estimate: 238,614

Class of County: 3rd

No. of Common Pleas Court Judgeships: 6

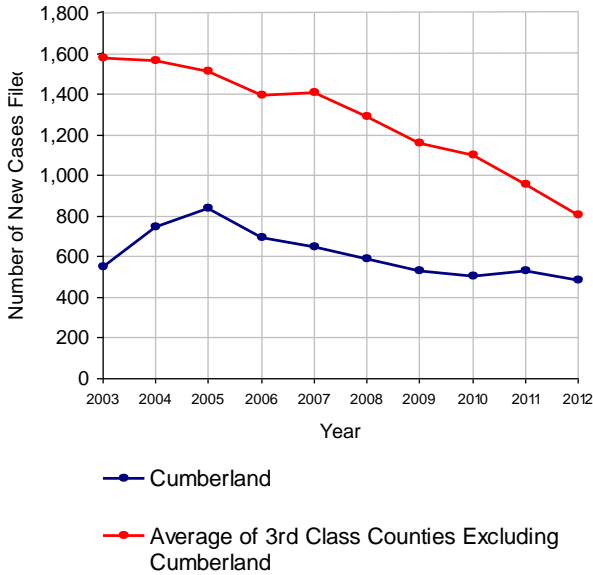


2012 Juvenile Delinquency

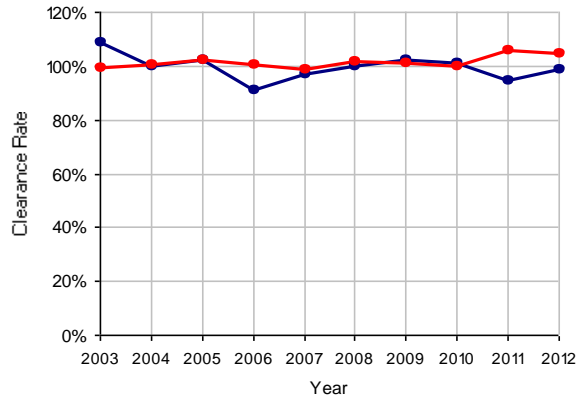
No. of Cases

Cases Pending 1/1/2012	127
New Cases Filed in 2012	486
Cases Available for Processing	613
Processed By:	
Judge	100 20.8%
Non-Judicial Officer	325 67.6%
Other	56 11.6%
Cases Processed	481 100.0%
Cases Pending 12/31/2012	132

Juvenile Delinquency New Cases Filed, 2003-2012

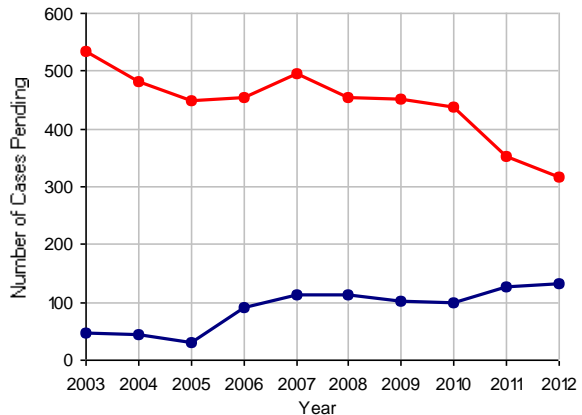


Clearance Rate, 2003-2012



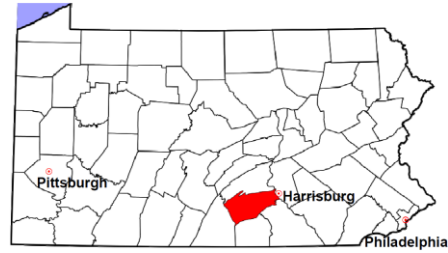
Note: Clearance Rate = Cases Processed / New Cases Filed

Cases Pending at the End of Year, 2003-2012



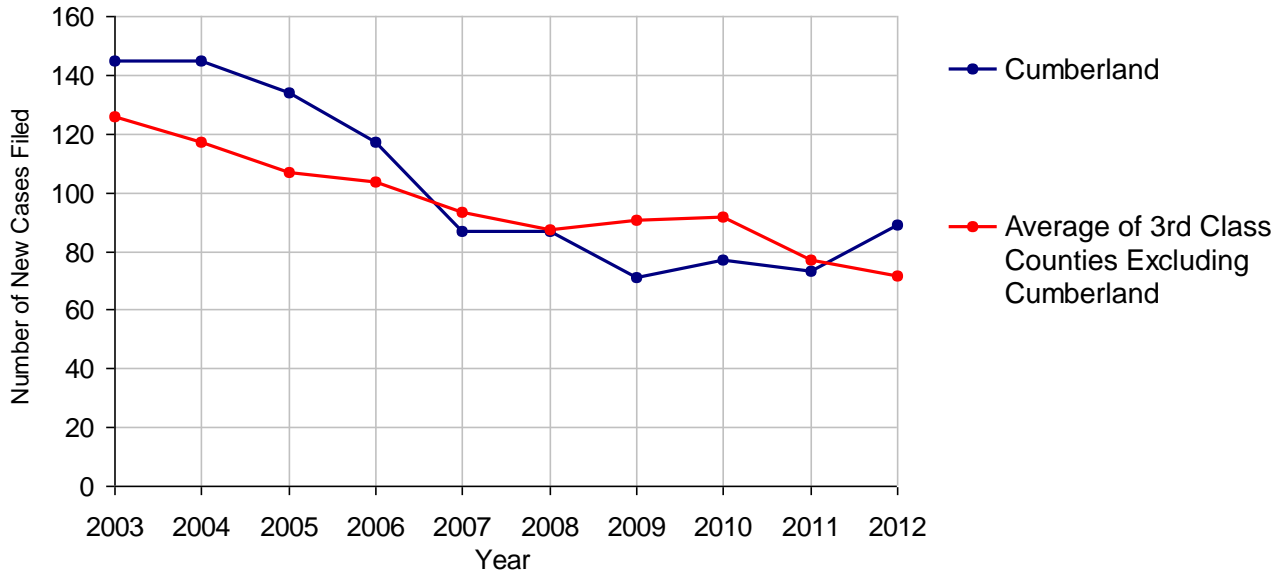
Cumberland County

2012 Population Estimate: 238,614
 Class of County: 3rd
 No. of Common Pleas Court Judgeships: 6



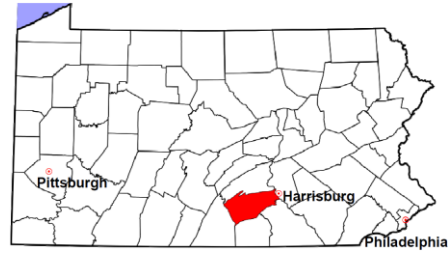
2012 Accounts	No. of Cases	
Cases Pending 1/1/2012	23	
New Cases Filed in 2012	89	
Cases Available for Processing	112	
Processed By:		
Contested before a Judge	5	5.5%
Contested before a Non-judicial Officer	0	
Uncontested	83	91.2%
Other	3	3.3%
Cases Processed	91	100.0%
Cases Pending 12/31/2012	21	

Accounts New Cases Filed, 2003-2012



Cumberland County

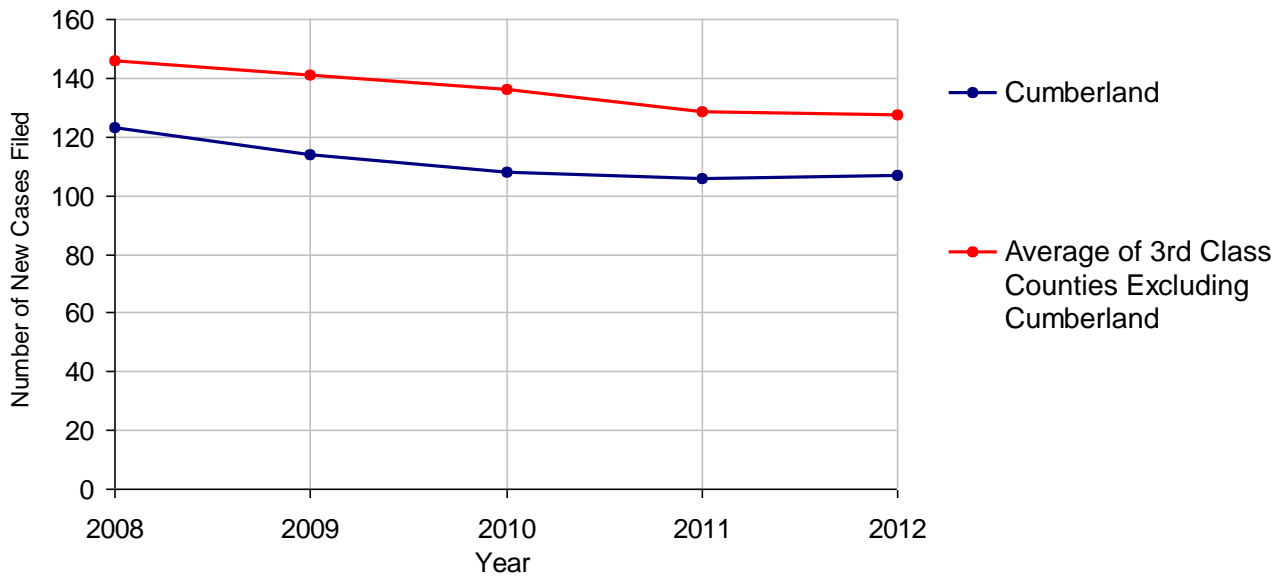
2012 Population Estimate: 238,614
 Class of County: 3rd
 No. of Common Pleas Court Judgeships: 6



2012 Adoptions

		No. of Cases	
Cases Pending 1/1/2012		26	
New Cases Filed in 2012		107	
Cases Available for Processing		133	
Processed By:			
Contested before a Judge	Granted	0	
	Denied	1	0.8%
Uncontested	Granted	113	95.8%
	Denied	0	
Other		4	3.4%
Cases Processed		118	100.0%
Cases Pending 12/31/2012		15	

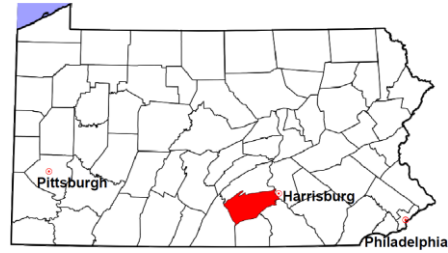
Adoptions New Cases Filed, 2008-2012



Note: Prior to 2008, each petition was counted as one new case, regardless of the number of children listed on the petition. Starting in 2008, each child listed on a petition is counted as a separate case. Therefore, statistics since 2008 should not be compared to statistics prior to 2008.

Cumberland County

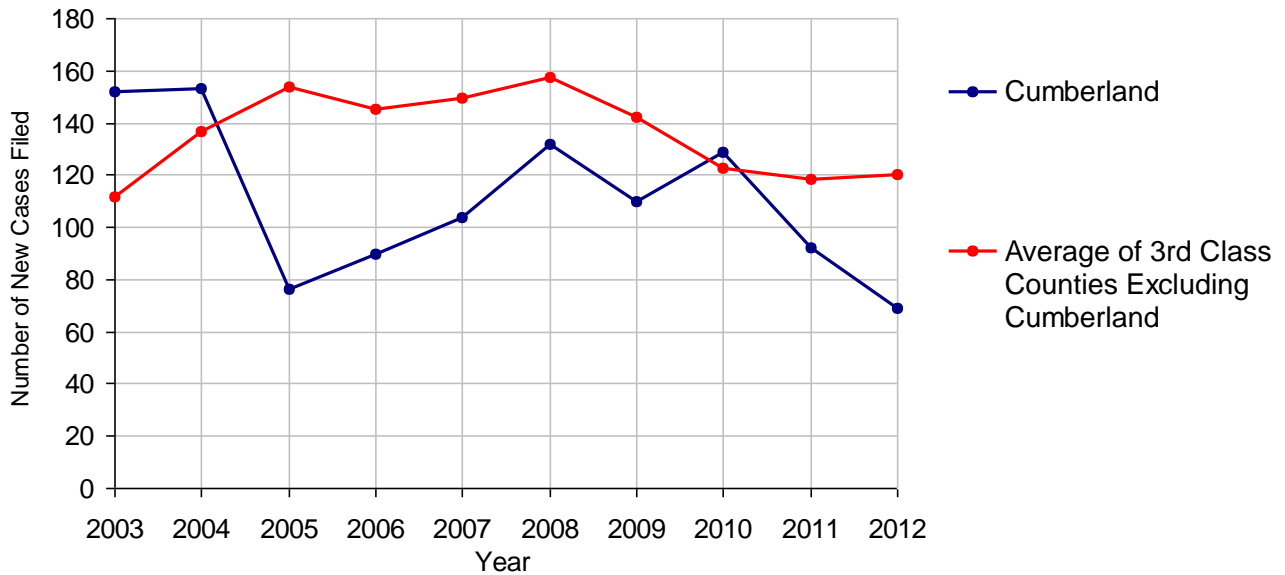
2012 Population Estimate: 238,614
 Class of County: 3rd
 No. of Common Pleas Court Judgeships: 6



2012 Relinquishments/Terminations

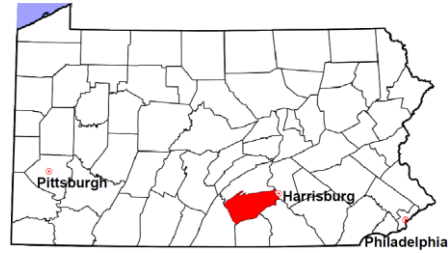
	No. of Cases
Cases Pending 1/1/2012	14
New Cases Filed in 2012	69
Cases Available for Processing	83
Processed By:	
Contested before a Judge	6 9.0%
Uncontested	59 88.1%
Other	2 3.0%
Cases Processed	67 100.0%
Cases Pending 12/31/2012	16

Relinquishments/Terminations New Cases Filed, 2003-2012



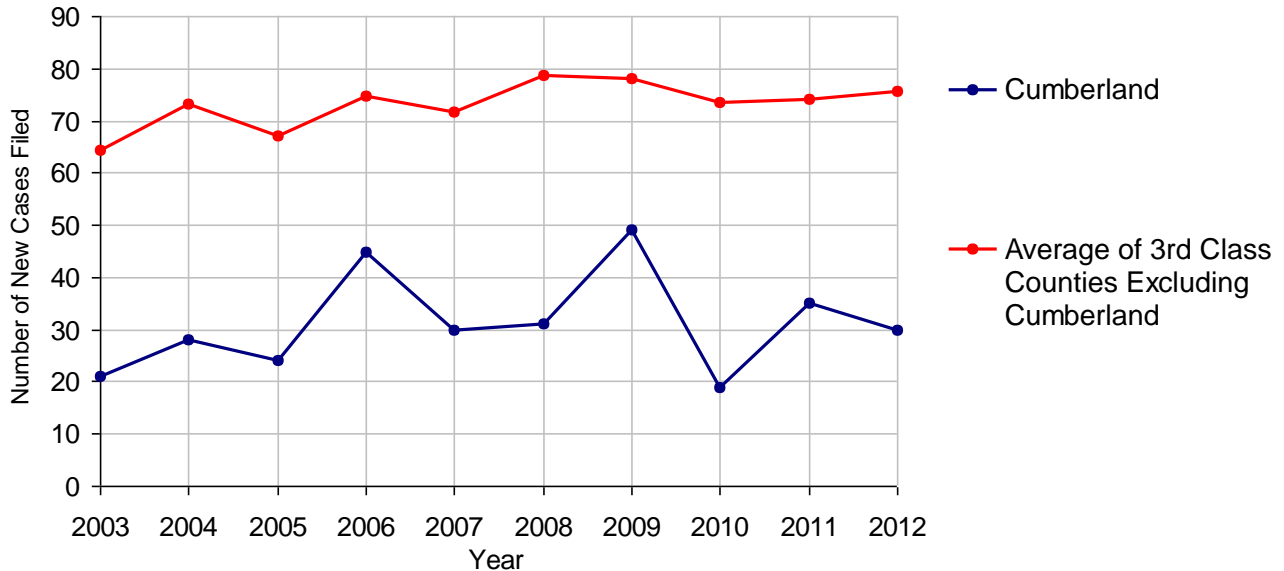
Cumberland County

2012 Population Estimate: 238,614
 Class of County: 3rd
 No. of Common Pleas Court Judgeships: 6



2012 Appointment of Guardians	No. of Cases
Cases Pending 1/1/2012	5
New Cases Filed in 2012	30
Cases Available for Processing	35
Processed By:	
Contested before a Judge	8 29.6%
Uncontested	17 63.0%
Other	2 7.4%
Cases Processed	27 100.0%
Cases Pending 12/31/2012	8

Appointment of Guardians New Cases Filed, 2003-2012



Cumberland County

2012 Population Estimate: 238,614
 Class of County: 3rd
 No. of Common Pleas Court Judgeships: 6



2012 Jury Yield and Utilization

Jury Yield

Qualification Questionnaires/Summonses Mailed:	4,203	A		
Returned Undeliverable:	215	B	5.1%	Of Qualification Questionnaires/Summonses Mailed
Not Responded to:	129	C	3.1%	
the Number of Prospective Jurors:				
Disqualified:	546	D	13.0%	
Exempted:	54	E	1.3%	
Excused:	1,633	F	38.9%	
Deferred to New Term:	199	G	4.7%	
Deferred from Previous Term:	163	H	3.9%	
Total Number of Qualified Jurors Available for Service:	1,590	I	37.8%	

I=A-B-C-D-E-F-G+H

Jury Utilization

the Number of Jurors:				
Reporting for Service:	1,578		99.2%	Of Jurors Qualified and Available
Told Not to Report for Service:	368		23.1%	
Sent to Courtroom for Jury Selection (Voir Dire):	2,035		129.0%	Of Jurors Reporting for Service
Impanelled or Sworn (jurors/alternates):	765		48.5%	
Removed for Cause/Hardship:	74			
Removed by Peremptory Challenge:	681			

Jury Costs

Total Annual Budget for Juror Operations:	\$157,872.00	J
Average Cost Per Juror:	\$37.56	K

K=J/A

In mid-2011, AOPC began utilizing the National Center for State Courts' Jury Managers' Toolbox for collecting jury data. In 2012, the counties began providing additional jury data which included information about the summoning practices in the counties. With this additional data, we can now see not only how many citizens come to our courthouses every day in anticipation of serving on a jury, but the number of citizens actually summonsed and the number of those summonsed who are exempt, excused or disqualified from service. With this wider view of the jury process, we can determine the efficiency with which our courts operate, and with the assistance of the Jury Managers' Toolbox find guidance in streamlining the jury summonsing practices.