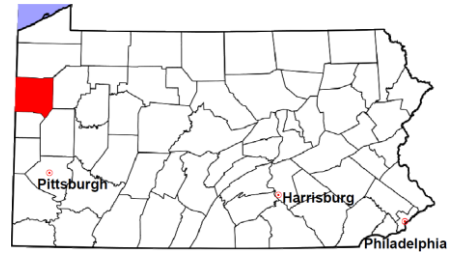


Mercer County

2012 Population Estimate: 115,655
 Class of County: 5th
 No. of Common Pleas Court Judgeships: 4



2012 Criminal	No. of Cases
---------------	--------------

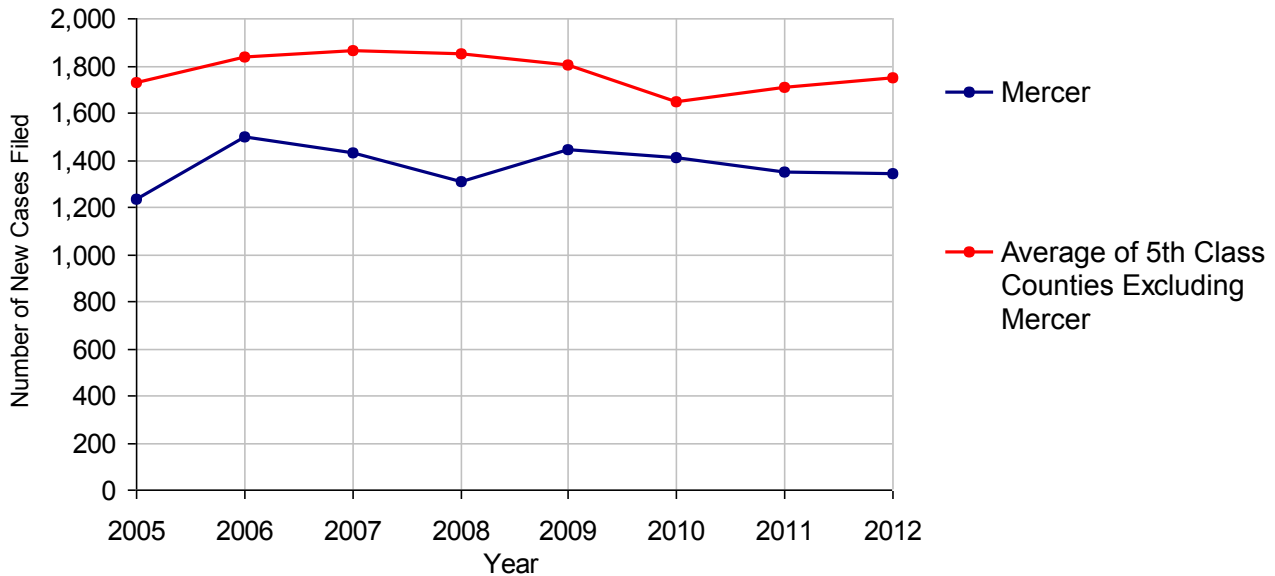
Cases Pending 1/1/2012	841
New Cases Filed in 2012	1,344
Reopened Cases	85
Cases Available for Disposition	2,270
Disposed by:	
Withdrawn/Dismissed	178 13.2%
ARD	265 19.6%
Guilty Plea	780 57.6%
Non-Jury Trial	8 0.6%
Jury Trial	19 1.4%
Inactive	43 3.2%
Other	60 4.4%
Total Cases Disposed	1,353 100.0%
Cases Pending 12/31/2012	917
Cases Awaiting Sentencing	107



Age of Pending Cases as of 12/31/2012		
0-60 Days	233	25.4%
61-120 Days	208	22.7%
121-180 Days	197	21.5%
181-240 Days	105	11.5%
241-300 Days	64	7.0%
301-360 Days	40	4.4%
Over 360 Days	70	7.6%
Total	917	100.0%

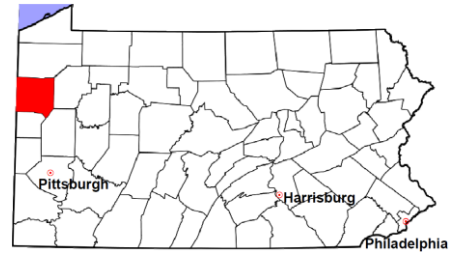
Data provided by CPCMS

Criminal New Cases Filed, 2005-2012



Mercer County

2012 Population Estimate: 115,655
 Class of County: 5th
 No. of Common Pleas Court Judgeships: 4



2012 Criminal - New Cases by Case Type



Case Type	Felony	Misdemeanor	Summary /Ungraded	Total
Person	154	77	0	231
Property	224	209	2	435
Drug	93	81	0	174
Weapon	15	3	0	18
Public Order	35	61	0	96
Motor Vehicle - DWI/DUI	0	389	0	389
Motor Vehicle - Other	0	1	0	1
Other	0	0	0	0
Total	521	821	2	1,344
	38.8%	61.1%	0.1%	100.0%

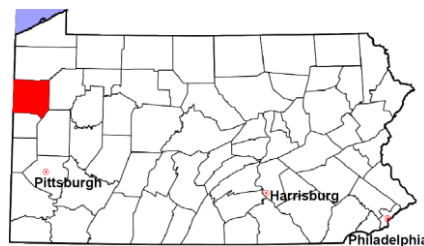
Data provided by CPCMS

Mercer County

2012 Population Estimate: 115,655

Class of County: 5th

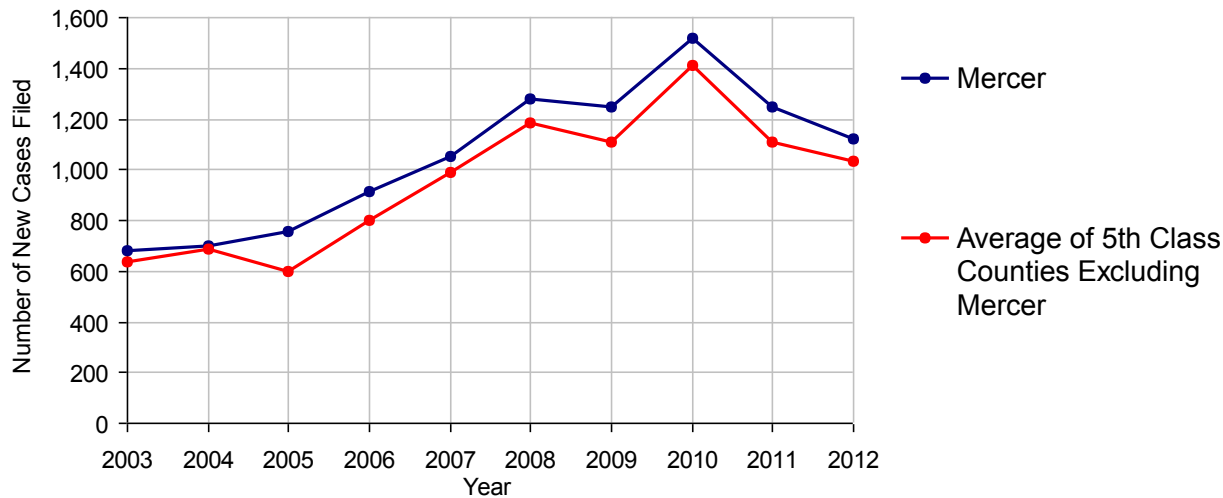
No. of Common Pleas Court Judgeships: 4



2012 Civil	Civil Action	Other	Total
Cases Pending 1/1/2012	658	382	1,040
Docketed Cases	733	390	1,123
Arbitration Appeals	0	0	0
Transferred In	0	0	0
Returned to Active	163	9	172
Cases Available for Processing	1,554	781	2,335
Disposed By:			
Default Judgments	344	203	547
Cases Decided by Arbitration Board	19	2	21
Dispositive Motions	11	51	62
Settlements	209	81	290
Moved to Inactive Status	0	0	0
Transferred/Withdrawn	8	5	13
Administrative Purge	0	3	3
Other	2	0	2
Jury Trial	1	0	1
Non-Jury Trial	0	0	0
Total Cases Disposed	594	345	939
Cases Pending 12/31/2012	960	436	1,396

Age of Pending Cases as of 12/31/2012 (Civil Action Only)		
0-6 months	279	29.1%
7-12 months	152	15.8%
13-18 months	150	15.6%
19-24 months	120	12.5%
25-30 months	117	12.2%
31-36 months	30	3.1%
37-42 months	39	4.1%
43-48 months	21	2.2%
49-54 months	12	1.3%
55-60 months	5	0.5%
61-66 months	7	0.7%
67-72 months	6	0.6%
Over 72 months	22	2.3%
Total	960	100.0%

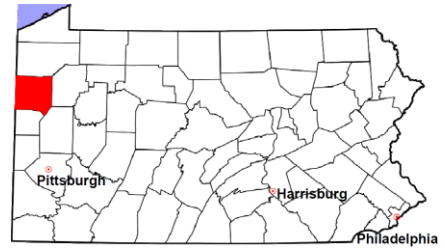
Docketed Cases, 2003-2012



Note: Prior to June 2010, docketed cases under the "Other" category were not reported. The inclusion of these cases starting from June 2010 may contribute to an increase in docketed cases from 2009 to 2010.

Mercer County

2012 Population Estimate: 115,655
 Class of County: 5th
 No. of Common Pleas Court Judgeships: 4



2012 Civil - Docketed Cases Listed by Case Type

TORT	148	13.2%
<i>(does not include mass tort)</i>		
Intentional	3	
Malicious Prosecution	0	
Motor Vehicle	91	
Nuisance	0	
Premise Liability	24	
Product Liability	1	
Slander/Libel/Defamation	1	
Other	28	
MASS TORT	0	
Asbestos	0	
Tobacco	0	
Toxic Tort - DES	0	
Toxic Tort - Implant	0	
Toxic Waste	0	
Other	0	
PROFESSIONAL LIABILITY	8	0.7%
Dental	0	
Legal	1	
Medical Malpractice	5	
Other	2	
CONTRACT	563	50.1%
<i>(does not include judgments)</i>		
Buyer Plaintiff	14	
Debt Collection: Credit Card	214	
Debt Collection: Other	295	
Employment Dispute:		
Employment Dispute: Discriminatio	0	
Employment Dispute: Other	5	
Other	35	

REAL PROPERTY	318	28.3%
Ejectment*	36	
Eminent Domain/Condemnation	4	
Ground Rent	0	
Landlord/Tenant Dispute	14	
Mortgage Forclosures:		
Residential*	231	
Commercial*	6	
Partition of Real Property*	4	
Quiet Title*	7	
Other*	16	
CIVIL APPEALS	40	3.6%
<i>- Administrative Agencies</i>		
Board of Assessment*	4	
Board of Elections*	0	
Dept. of Transportation*	14	
Zoning Board*	0	
Statutory Appeal - Other*	3	
Other*	19	
MISCELLANEOUS	46	4.1%
Common Law/		
Statutory Arbitration*	1	
Declaratory Judgment*	3	
Mandamus*	0	
Non-Domestic Relations		
Restraining Order*	0	
Quo Warranto*	0	
Replevin*	6	
Other*	36	
TOTAL DOCKETED CASES:	1,123	100%

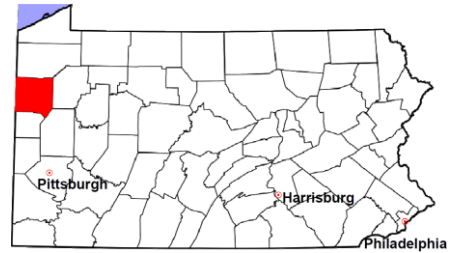
Of the Docketed Cases:

Pro Se Filings: 37 3.3% Class Action Suits: 7 0.6% MDJ Appeals: 57 5.1%

* Civil Other

Mercer County

2012 Population Estimate: 115,655
 Class of County: 5th
 No. of Common Pleas Court Judgeships: 4



2012 Protection From Abuse

**No. of
Petitions**

Cases Pending 1/1/2012	19
New Cases Filed in 2012	444

*Of these, Petitions Requesting Temporary Orders: 444 (100.0%)
 Temporary Orders DENIED: 154 (34.7%), Temporary Orders GRANTED: 290 (65.3%)*

Cases Available for Processing 463

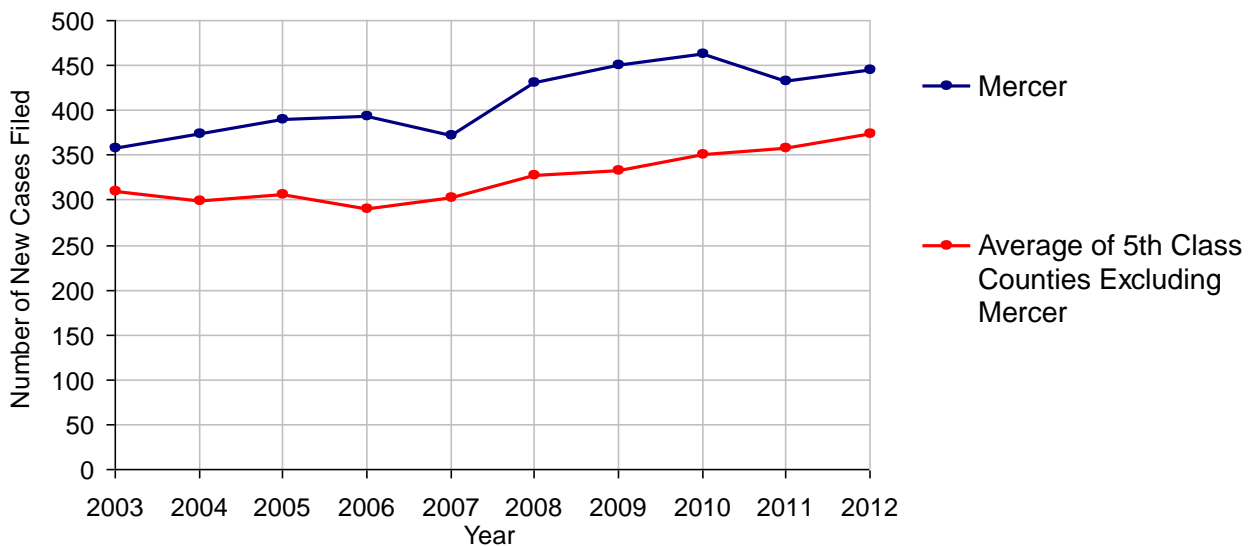
Processed By:

Temporary Order DENIED After Ex Parte Hearing and No Evidentiary Hearing Scheduled	4	0.9%
Temporary Order DISMISSED After Evidentiary Hearing and No Final Order Entered	0	
Final Order DENIED After Evidentiary Hearing Before a Judge	41	9.3%
Final Order GRANTED After Evidentiary Hearing Before a Judge	49	11.1%
Plaintiff Did Not Appear For Evidentiary Hearing	64	14.5%
Final Order by STIPULATION OR AGREEMENT Between the Parties	101	23.0%
Petition WITHDRAWN by Plaintiff	167	38.0%
TRANSFERRED to Another Jurisdiction	0	
DECEASED Party	0	
Other	14	3.2%

Cases Processed 440 100.0%

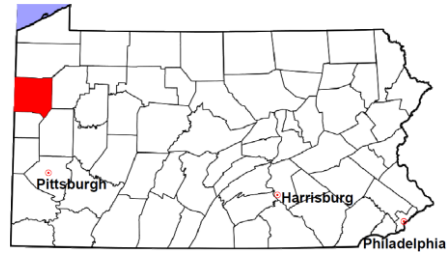
Cases Pending 12/31/2012 23

PFA New Cases Filed, 2003-2012



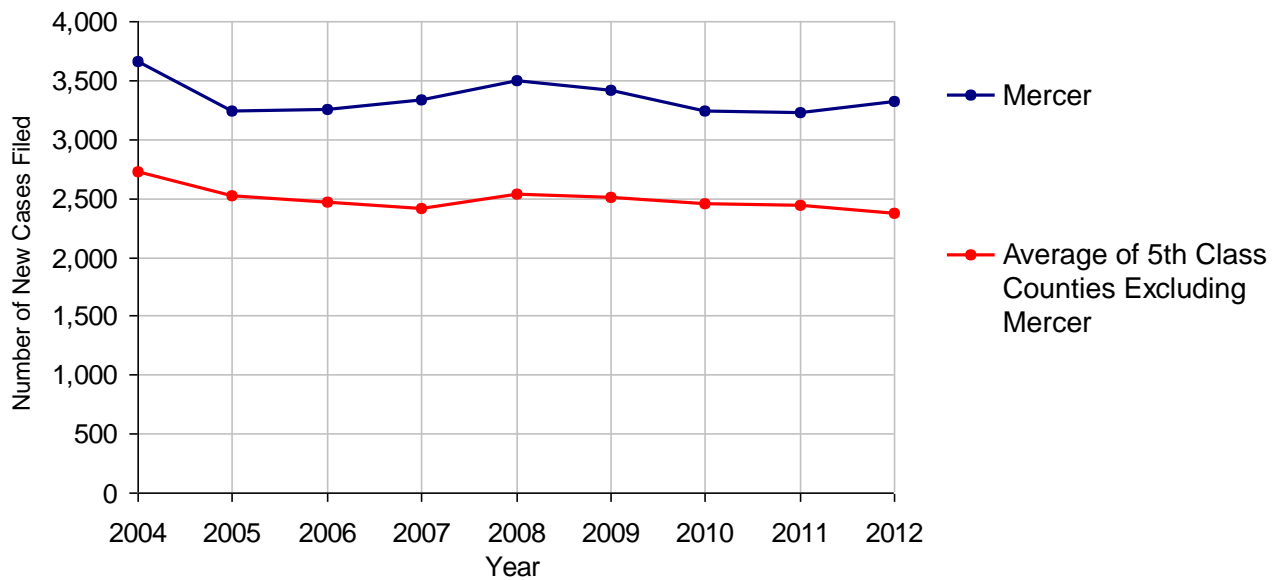
Mercer County

2012 Population Estimate: 115,655
 Class of County: 5th
 No. of Common Pleas Court Judgeships: 4



2012 Spousal & Child Support	No. of Petitions	
Cases Pending 1/1/2012	723	
New Cases Filed in 2012	3,323	
Dockets Transferred In (+)	36	
Dockets Transferred Out (-)	38	
Cases Available for Processing	4,044	
Processed By:		
Judge	144	4.4%
Intake Officer	3,109	95.6%
Hearing Officer	0	
Other	0	
Cases Processed	3,253	100.0%
Cases Pending 12/31/2012	791	

Spousal & Child Support New Cases Filed, 2004-2012

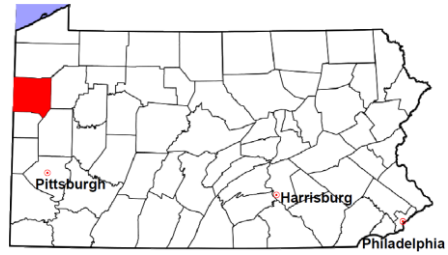


Mercer County

2012 Population Estimate: 115,655

Class of County: 5th

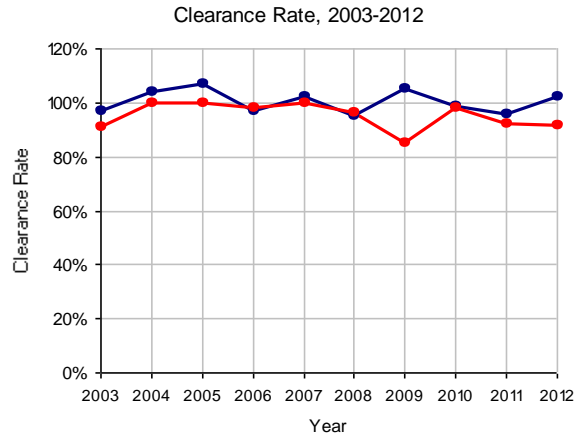
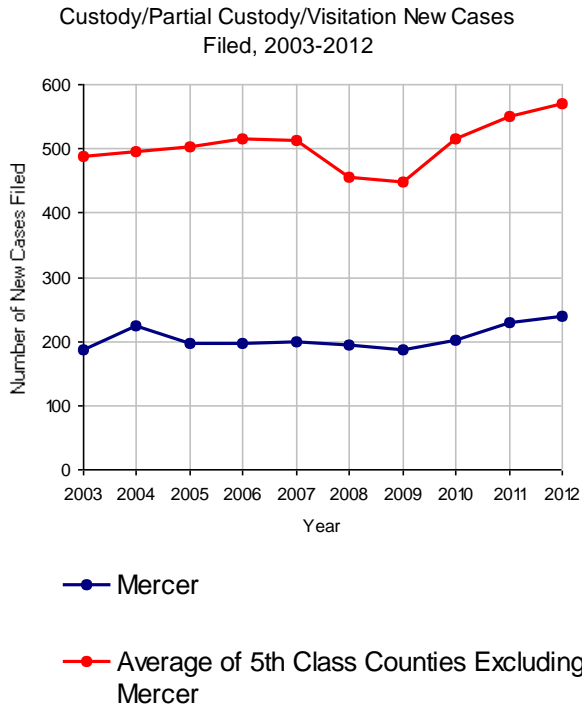
No. of Common Pleas Court Judgeships: 4



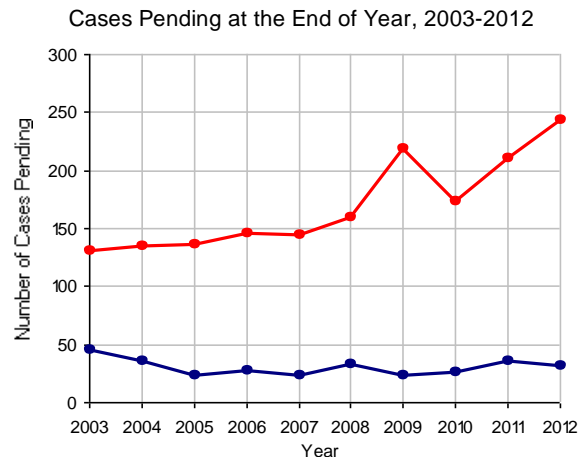
2012 Custody/Partial Custody/Visitation

No. of Petitions

Cases Pending 1/1/2012	36
New Cases Filed in 2012	239
Cases Available for Processing	275
Processed By:	
Judge	124 50.8%
Non-Judicial Officer	111 45.5%
Other	9 3.7%
Cases Processed	244 100.0%
Cases Pending 12/31/2012	31

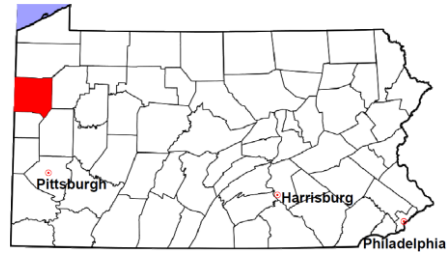


Note: Clearance Rate = Cases Processed / New Cases Filed



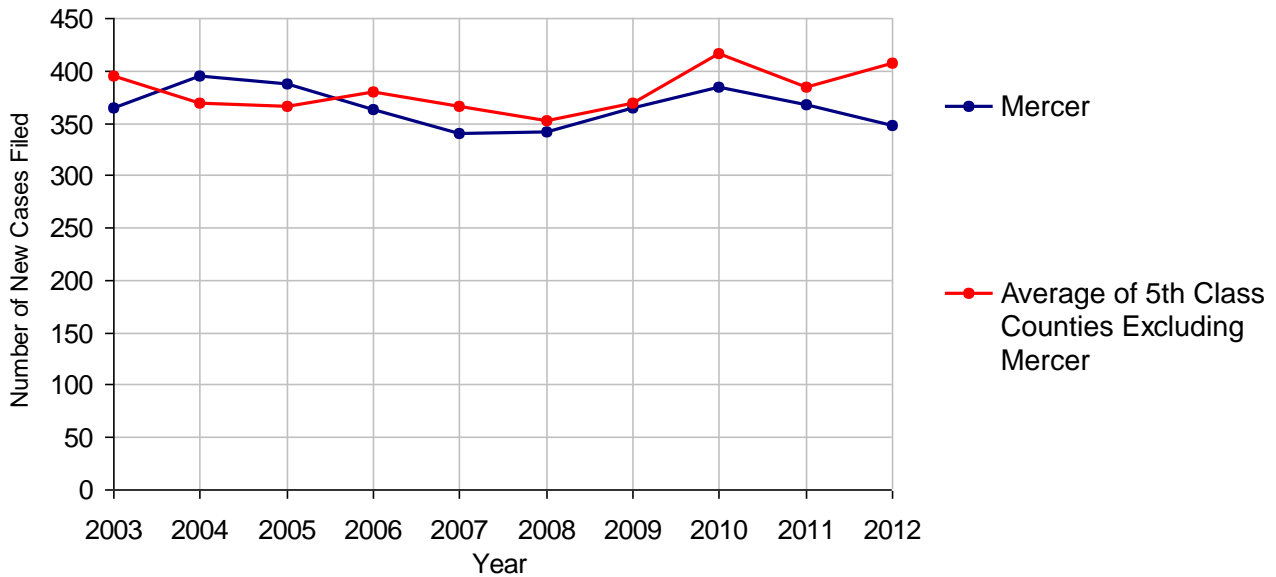
Mercer County

2012 Population Estimate: 115,655
 Class of County: 5th
 No. of Common Pleas Court Judgeships: 4



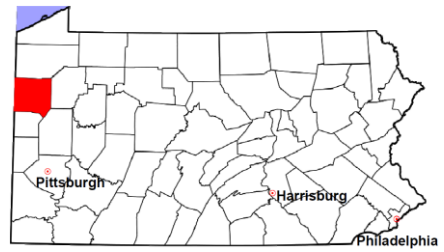
2012 Divorce	No. of Petitions	
Cases Pending 1/1/2012	500	
New Cases Filed in 2012	348	
Cases Available for Processing	848	
Processed By:		
Contested Before a Judge	1	0.3%
Contested Before a Master	32	8.4%
Uncontested	293	76.7%
Other	56	14.7%
Cases Processed	382	100.0%
Cases Pending 12/31/2012	466	

Divorce New Cases Filed, 2003-2012



Mercer County

2012 Population Estimate: 115,655
 Class of County: 5th
 No. of Common Pleas Court Judgeships: 4



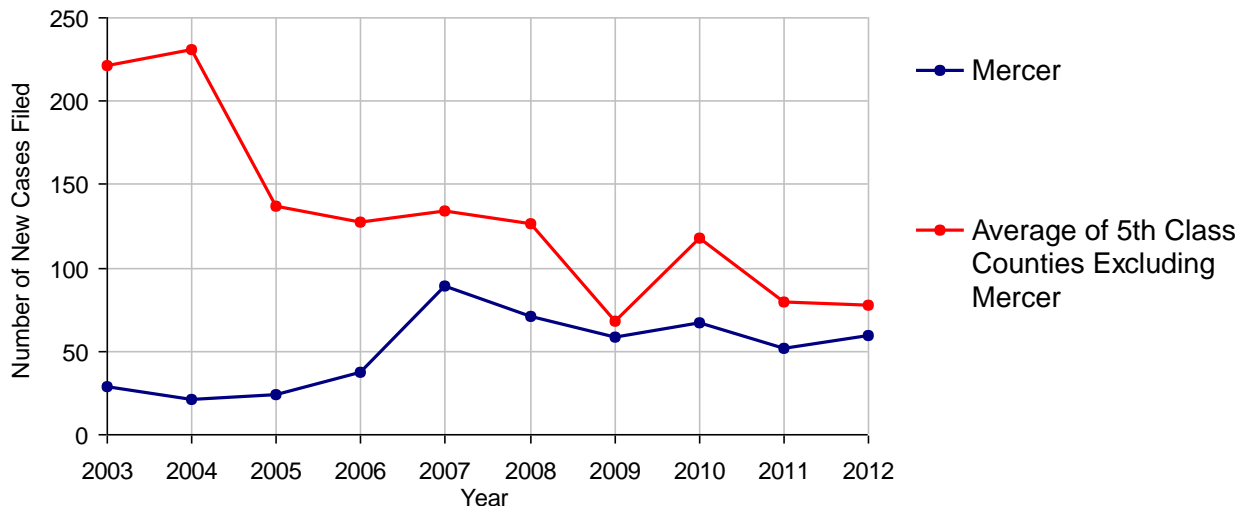
2012 Juvenile Dependency - Active Dependent Inventory



	Abuse/ Neglect	Status Offenses	Total
Cases Pending 1/1/2012	7	2	9
New Petitions Filed in 2012	45	14	59
Other	3	0	3
Total Petitions Available for Processing	55	16	71
Processed by:			
Adjudicated Dependent			
Judge	19	6	25
Master	0	0	0
Adjudicated NOT Dependent			
Judge	3	1	4
Master	0	0	0
Withdrawn/Dismissed/Inactive	0	0	0
Other	26	9	35
Total Petitions Processed	48	16	64
Cases Pending 12/31/2012	7	0	7

Data provided by CPCMS

Abuse/Neglect and Status Offenses New Cases Filed, 2003-2012



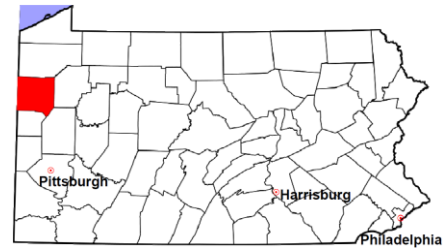
Note: Dependency data for 2002-2010 were collected manually. Dependency data for 2011 and 2012 were provided by CPCMS.

Mercer County

2012 Population Estimate: 115,655

Class of County: 5th

No. of Common Pleas Court Judgeships: 4



2012 Juvenile Dependency - Adjudicated Dependent Inventory



	Abuse/ Neglect	Status Offenses	Total
Cases Pending 1/1/2012	120	22	142
New Adjudicated Dependent Cases	19	6	25
Other	15	8	23
Total Adjudicated Dependent Cases	154	36	190

Court Supervision Terminated:

Family Reunification	9	16.1%	6	33.3%	15	20.3%
Adoption	5	8.9%	0		5	6.8%
Placement with a Relative/Guardian	22	39.3%	4	22.2%	26	35.1%
Aged Out	5	8.9%	2	11.1%	7	9.5%
Other Permanency Outcomes*	0		0		0	
Other**	15	26.8%	6	33.3%	21	28.4%
Total Adjudicated Dependent Cases Terminated	56	100.0%	18	100.0%	74	100.0%
Cases Pending 12/31/2012	98		18		116	

Data provided by CPCMS

* Other Permanency Outcomes include: adjudicated delinquent, death due to natural causes, death due to negligence, emancipation, permanent living arrangement, and parent has come forward.

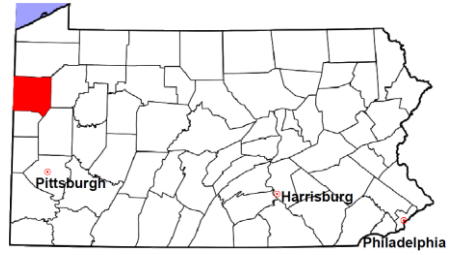
** Other includes cases where court supervision is terminated due to transfer out of jurisdiction, withdrawal and administrative closure.

Mercer County

2012 Population Estimate: 115,655

Class of County: 5th

No. of Common Pleas Court Judgeships: 4

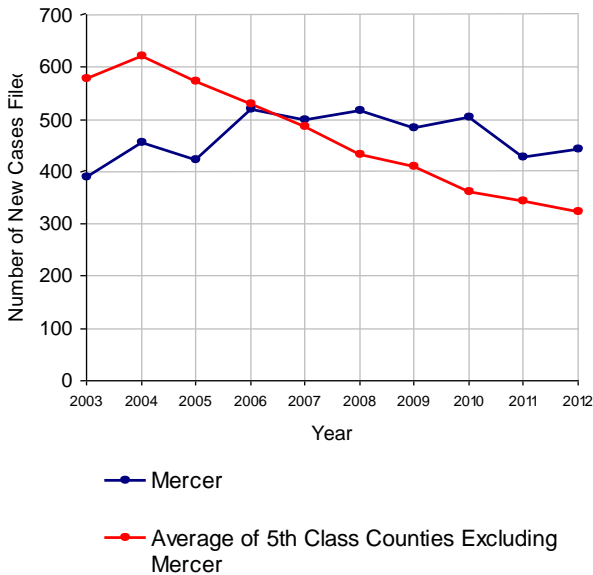


2012 Juvenile Delinquency

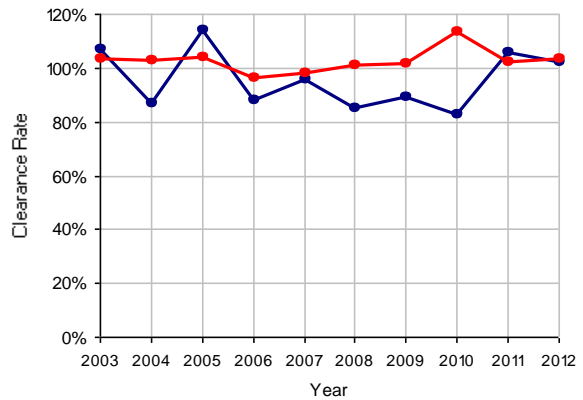
No. of Cases

Cases Pending 1/1/2012	371
New Cases Filed in 2012	442
Cases Available for Processing	813
Processed By:	
Judge	243 53.9%
Non-Judicial Officer	208 46.1%
Other	0
Cases Processed	451 100.0%
Cases Pending 12/31/2012	362

Juvenile Delinquency New Cases Filed, 2003-2012

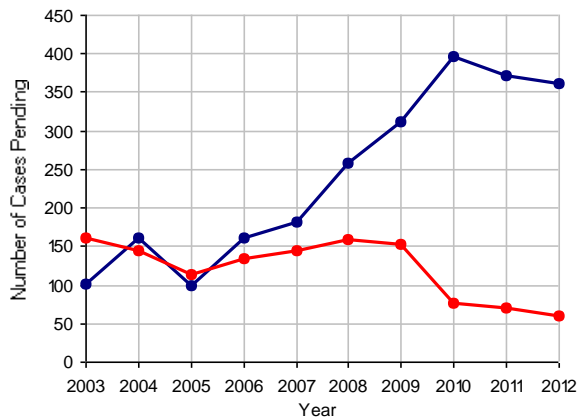


Clearance Rate, 2003-2012



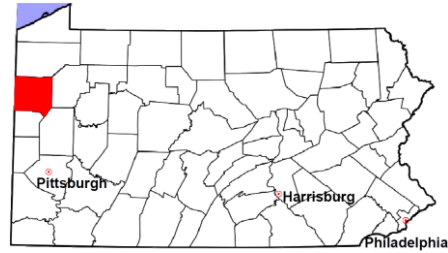
Note: Clearance Rate = Cases Processed / New Cases Filed

Cases Pending at the End of Year, 2003-2012



Mercer County

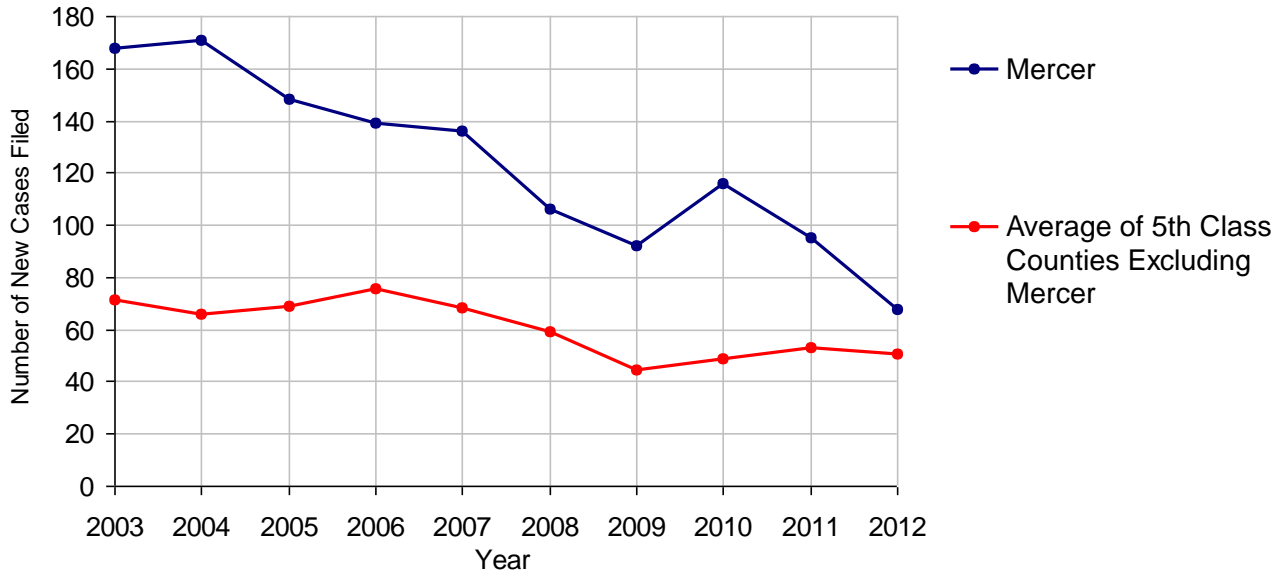
2012 Population Estimate: 115,655
 Class of County: 5th
 No. of Common Pleas Court Judgeships: 4



2012 Accounts

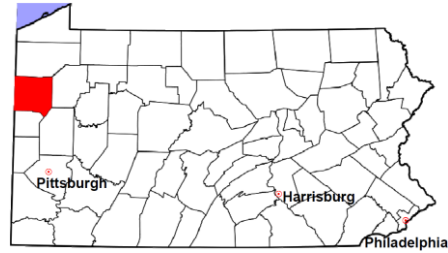
	No. of Cases	
Cases Pending 1/1/2012	40	
New Cases Filed in 2012	68	
Cases Available for Processing	108	
Processed By:		
Contested before a Judge	0	
Contested before a Non-judicial Officer	0	
Uncontested	83	100.0%
Other	0	
Cases Processed	83	100.0%
Cases Pending 12/31/2012	25	

Accounts New Cases Filed, 2003-2012



Mercer County

2012 Population Estimate: 115,655
 Class of County: 5th
 No. of Common Pleas Court Judgeships: 4

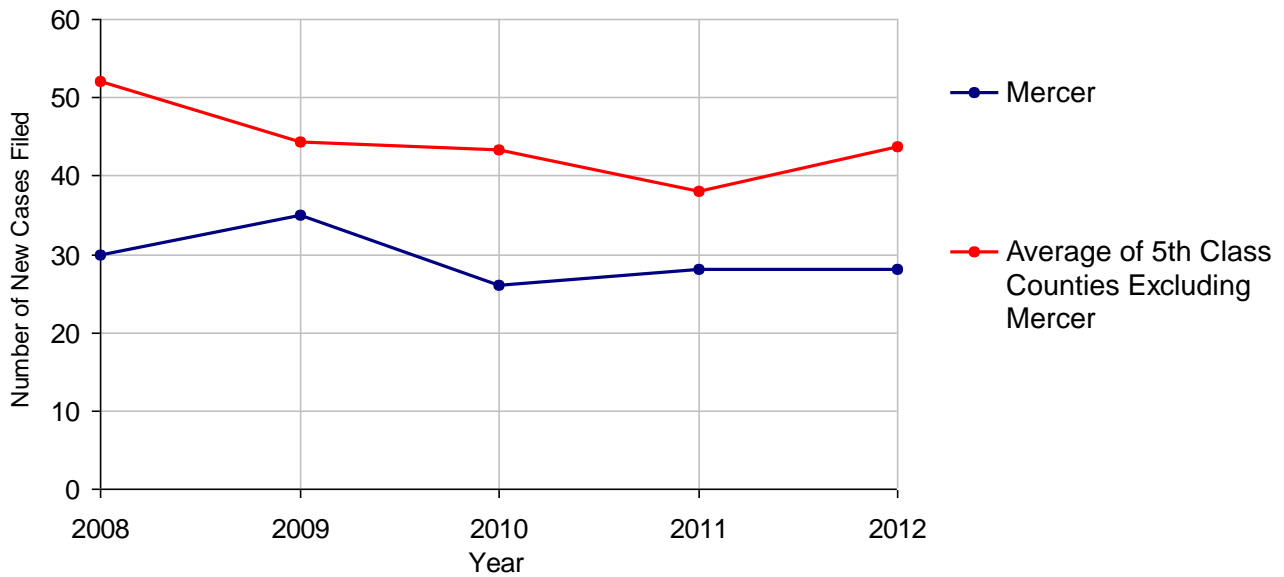


2012 Adoptions

		No. of Cases	
Cases Pending 1/1/2012		10 (R)	
New Cases Filed in 2012		28	
Cases Available for Processing		38	
Processed By:			
Contested before a Judge	Granted	0	
	Denied	0	
Uncontested	Granted	29	93.5%
	Denied	0	
Other		2	6.5%
Cases Processed		31	100.0%
Cases Pending 12/31/2012		7	

(R) - Revised

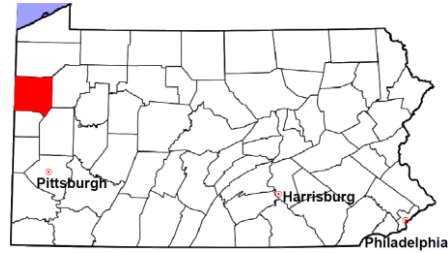
Adoptions New Cases Filed, 2008-2012



Note: Prior to 2008, each petition was counted as one new case, regardless of the number of children listed on the petition. Starting in 2008, each child listed on a petition is counted as a separate case. Therefore, statistics since 2008 should not be compared to statistics prior to 2008.

Mercer County

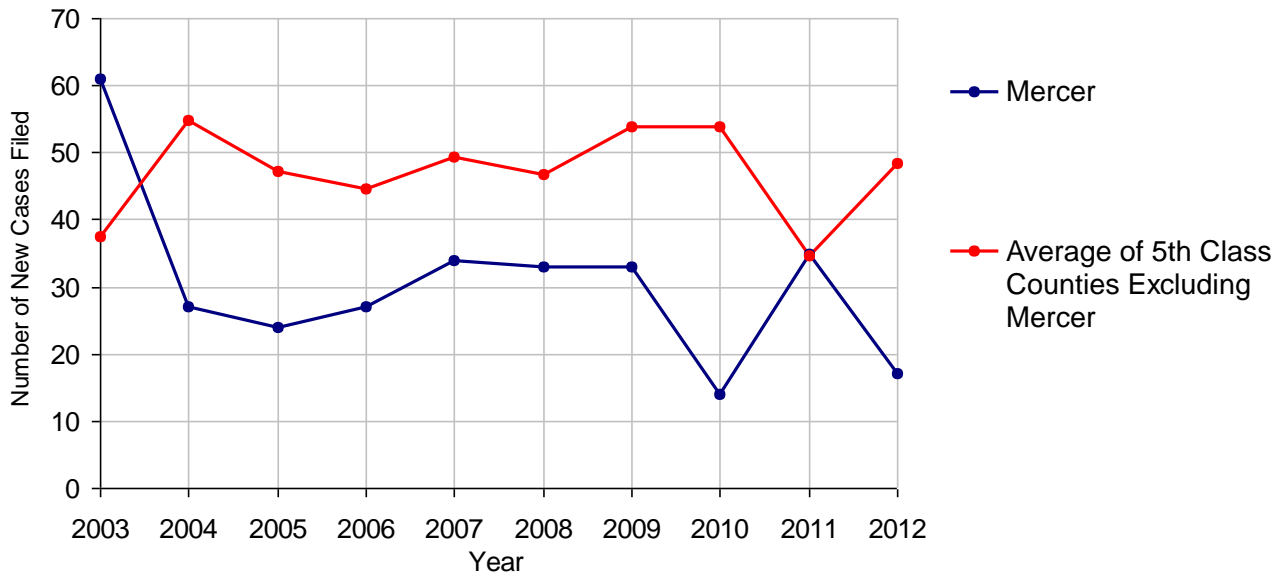
2012 Population Estimate: 115,655
 Class of County: 5th
 No. of Common Pleas Court Judgeships: 4



2012 Relinquishments/Terminations

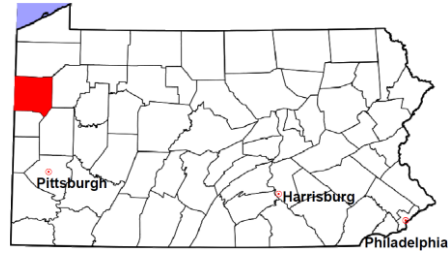
	No. of Cases
Cases Pending 1/1/2012	9
New Cases Filed in 2012	17
Cases Available for Processing	26
Processed By:	
Contested before a Judge	1 4.0%
Uncontested	22 88.0%
Other	2 8.0%
Cases Processed	25 100.0%
Cases Pending 12/31/2012	1

Relinquishments/Terminations New Cases Filed, 2003-2012



Mercer County

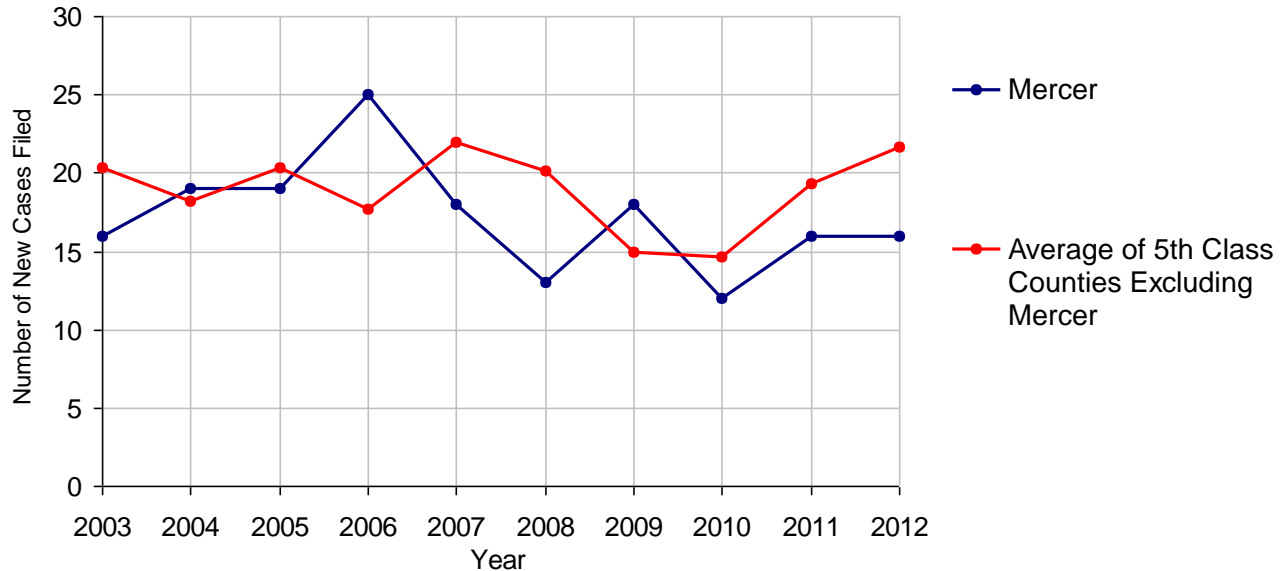
2012 Population Estimate: 115,655
 Class of County: 5th
 No. of Common Pleas Court Judgeships: 4



2012 Appointment of Guardians	No. of Cases
Cases Pending 1/1/2012	12 (R)
New Cases Filed in 2012	16
Cases Available for Processing	28
Processed By:	
Contested before a Judge	1 6.3%
Uncontested	13 81.3%
Other	2 12.5%
Cases Processed	16 100.0%
Cases Pending 12/31/2012	12

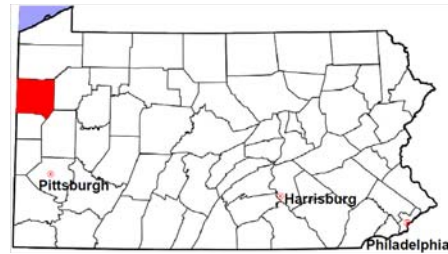
(R) - Revised

Appointment of Guardians New Cases Filed, 2003-2012



Mercer County

2012 Population Estimate: 115,655
 Class of County: 5th
 No. of Common Pleas Court Judgeships: 4



2012 Jury Yield and Utilization

Jury Yield

Qualification Questionnaires/Summonses Mailed:	5,997	A		
Returned Undeliverable:	384	B	6.4%	Of Qualification Questionnaires/Summonses Mailed
Not Responded to:	193	C	3.2%	
the Number of Prospective Jurors:				
Disqualified:	124	D	2.1%	
Exempted:	11	E	0.2%	
Excused:	2,442	F	40.7%	
Deferred to New Term:	528	G	8.8%	
Deferred from Previous Term:	0	H		
Total Number of Qualified Jurors Available for Service:	2,315	I	38.6%	

$I = A - B - C - D - E - F - G + H$

Jury Utilization

the Number of Jurors:			
Reporting for Service:	3,539		152.9%
Told Not to Report for Service:	0		
Sent to Courtroom for Jury Selection (Voir Dire):	1,779		50.3%
Impanelled or Sworn (jurors/alternates):	434		12.3%
Removed for Cause/Hardship:	0		
Removed by Peremptory Challenge:	0		

Jury Costs

Total Annual Budget for Juror Operations:	\$62,818.00	J
Average Cost Per Juror:	\$10.47	K

$K = J/A$

In mid-2011, AOPC began utilizing the National Center for State Courts' Jury Managers' Toolbox for collecting jury data. In 2012, the counties began providing additional jury data which included information about the summoning practices in the counties. With this additional data, we can now see not only how many citizens come to our courthouses every day in anticipation of serving on a jury, but the number of citizens actually summonsed and the number of those summonsed who are exempt, excused or disqualified from service. With this wider view of the jury process, we can determine the efficiency with which our courts operate, and with the assistance of the Jury Managers' Toolbox find guidance in streamlining the jury summonsing practices.