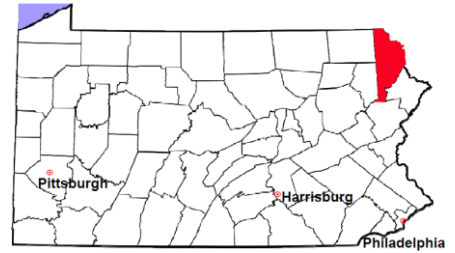


# Wayne County

2012 Population Estimate: 51,955

Class of County: 6th

No. of Common Pleas Court Judgeships: 1



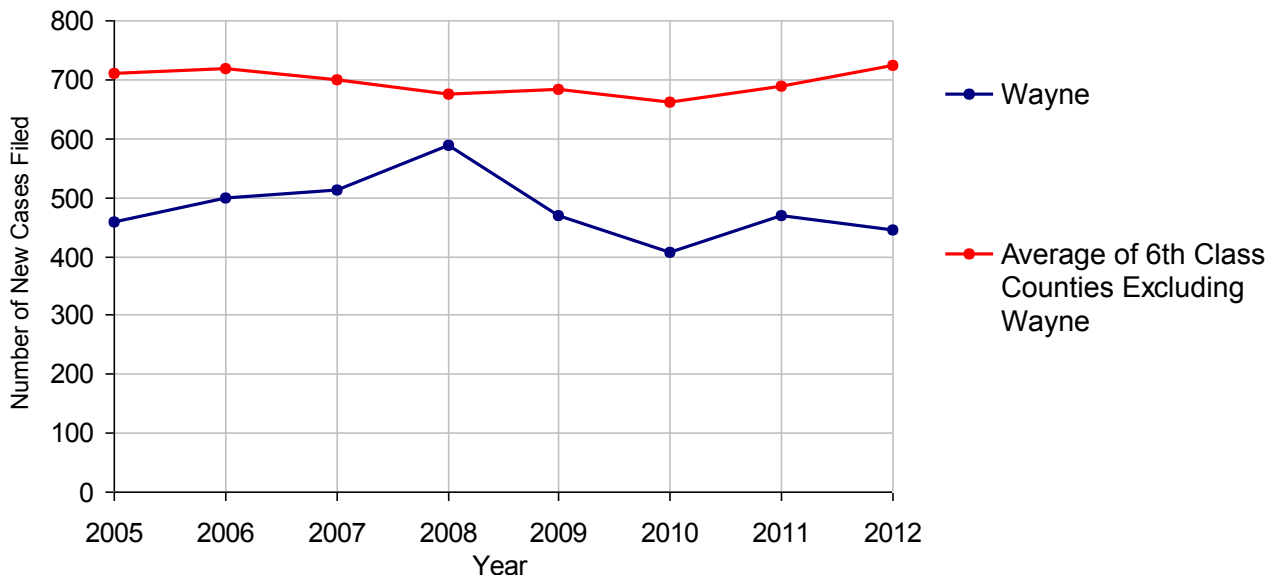
<b>2012 Criminal</b>	<b>No. of Cases</b>	
Cases Pending 1/1/2012	170	
New Cases Filed in 2012	444	
Reopened Cases	15	
<b>Cases Available for Disposition</b>	<b>629</b>	
<b>Disposed by:</b>		
Withdrawn/Dismissed	35	7.8%
ARD	72	16.1%
Guilty Plea	277	61.8%
Non-Jury Trial	3	0.7%
Jury Trial	10	2.2%
Inactive	7	1.6%
Other	44	9.8%
<b>Total Cases Disposed</b>	<b>448</b>	<b>100.0%</b>
<b>Cases Pending 12/31/2012</b>	<b>181</b>	
Cases Awaiting Sentencing	17	



<b>Age of Pending Cases as of 12/31/2012</b>		
0-60 Days	58	32.0%
61-120 Days	66	36.5%
121-180 Days	32	17.7%
181-240 Days	8	4.4%
241-300 Days	3	1.7%
301-360 Days	2	1.1%
Over 360 Days	12	6.6%
<b>Total</b>	<b>181</b>	<b>100.0%</b>

Data provided by CPCMS

**Criminal New Cases Filed, 2005-2012**

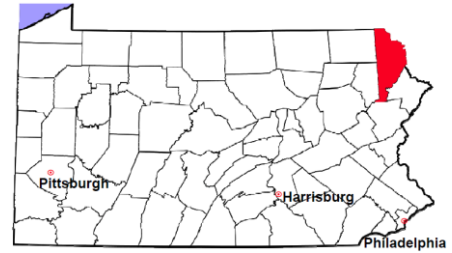


# Wayne County

2012 Population Estimate: 51,955

Class of County: 6th

No. of Common Pleas Court Judgeships: 1



## 2012 Criminal - New Cases by Case Type



Case Type	Felony	Misdemeanor	Summary /Ungraded	Total
Person	39	34	0	73
Property	89	56	2	147
Drug	33	30	0	63
Weapon	7	2	0	9
Public Order	5	17	0	22
Motor Vehicle - DWI/DUI	0	124	0	124
Motor Vehicle - Other	0	1	0	1
Other	5	0	0	5
<b>Total</b>	<b>178</b>	<b>264</b>	<b>2</b>	<b>444</b>
	<b>40.1%</b>	<b>59.5%</b>	<b>0.5%</b>	<b>100.0%</b>

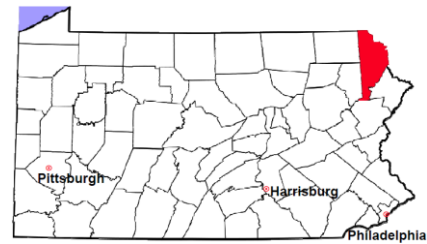
Data provided by CPCMS

# Wayne County

2012 Population Estimate: 51,955

Class of County: 6th

No. of Common Pleas Court Judgeships: 1

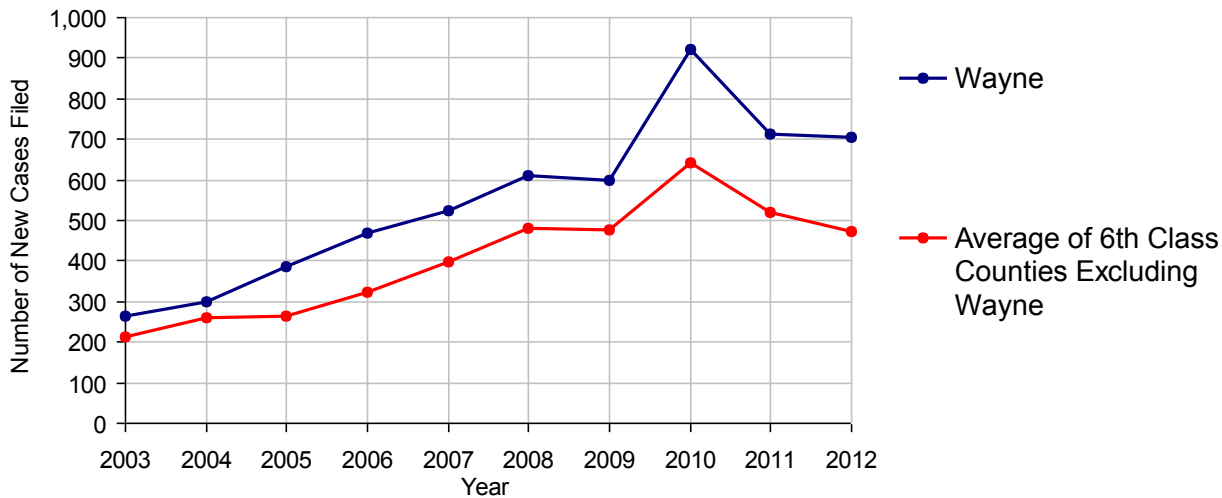


2012 Civil	Civil Action	Other	Total
Cases Pending 1/1/2012	253	174	427
Docketed Cases	352	351	703
Arbitration Appeals	7	2	9
Transferred In	4	0	4
Returned to Active	50	17	67
<b>Cases Available for Processing</b>	<b>666</b>	<b>544</b>	<b>1,210</b>
Disposed By:			
Default Judgments	136	194	330
Cases Decided by Arbitration Board	21	5	26
Dispositive Motions	13	16	29
Settlements	65	38	103
Moved to Inactive Status	8	5	13
Transferred/Withdrawn	95	27	122
Administrative Purge	0	0	0
Other	98	55	153
Jury Trial	3	0	3
Non-Jury Trial	10	5	15
<b>Total Cases Disposed</b>	<b>449</b>	<b>345</b>	<b>794</b>
<b>Cases Pending 12/31/2012</b>	<b>217</b>	<b>199</b>	<b>416</b>

### Age of Pending Cases as of 12/31/2012 (Civil Action Only)

0-6 months	107	49.3%
7-12 months	52	24.0%
13-18 months	35	16.1%
19-24 months	14	6.5%
25-30 months	3	1.4%
31-36 months	4	1.8%
37-42 months	0	
43-48 months	1	0.5%
49-54 months	0	
55-60 months	0	
61-66 months	0	
67-72 months	0	
Over 72 months	1	0.5%
<b>Total</b>	<b>217</b>	<b>100.0%</b>

Docketed Cases, 2003-2012



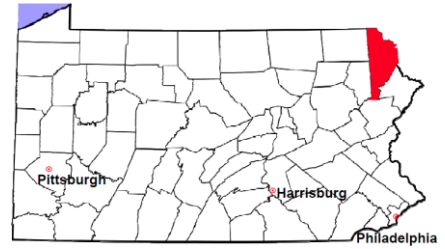
Note: Prior to June 2010, docketed cases under the "Other" category were not reported. The inclusion of these cases starting from June 2010 may contribute to an increase in docketed cases from 2009 to 2010.

# Wayne County

2012 Population Estimate: 51,955

Class of County: 6th

No. of Common Pleas Court Judgeships: 1



## 2012 Civil - Docketed Cases Listed by Case Type

<b>TORT</b>	<b>65</b>	<b>9.2%</b>	<b>REAL PROPERTY</b>	<b>295</b>	<b>42.0%</b>
<i>(does not include mass tort)</i>			Ejectment*	16	
Intentional	2		Eminent Domain/Condemnation	3	
Malicious Prosecution	0		Ground Rent	0	
Motor Vehicle	30		Landlord/Tenant Dispute	7	
Nuisance	0		Mortgage Foreclosure:		
Premise Liability	17		Residential*	222	
Product Liability	0		Commercial*	9	
Slander/Libel/Defamation	2		Partition of Real Property*	8	
Other	14		Quiet Title*	22	
<b>MASS TORT</b>	<b>0</b>		Other*	8	
Asbestos	0		<b>CIVIL APPEALS</b>	<b>26</b>	<b>3.7%</b>
Tobacco	0		<i>- Administrative Agencies</i>		
Toxic Tort - DES	0		Board of Assessment*	4	
Toxic Tort - Implant	0		Board of Elections*	0	
Toxic Waste	0		Dept. of Transportation*	20	
Other	0		Zoning Board*	0	
<b>PROFESSIONAL LIABILITY</b>	<b>1</b>	<b>0.1%</b>	Statutory Appeal - Other*	0	
Dental	0		Other*	2	
Legal	0		<b>MISCELLANEOUS</b>	<b>37</b>	<b>5.3%</b>
Medical Malpractice	1		Common Law/		
Other	0		Statutory Arbitration*	0	
<b>CONTRACT</b>	<b>279</b>	<b>39.7%</b>	Declaratory Judgment*	6	
<i>(does not include judgments)</i>			Mandamus*	0	
Buyer Plaintiff	2		Non-Domestic Relations		
Debt Collection: Credit Card	185		Restraining Order*	0	
Debt Collection: Other	37		Quo Warranto*	0	
Employment Dispute:			Replevin*	9	
Employment Dispute: Discriminatio	0		Other*	22	
Employment Dispute: Other	0		<b>TOTAL DOCKETED CASES:</b>	<b>703</b>	<b>100%</b>
Other	55				

### Of the Docketed Cases:

Pro Se Filings: 23 3.3%      Class Action Suits: 7 1.0%      MDJ Appeals: 64 9.1%

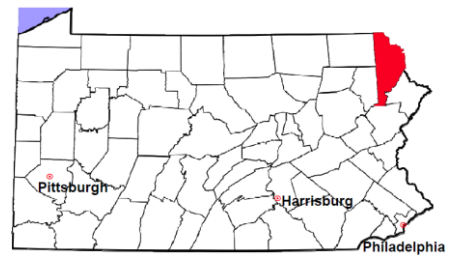
\* Civil Other

# Wayne County

2012 Population Estimate: 51,955

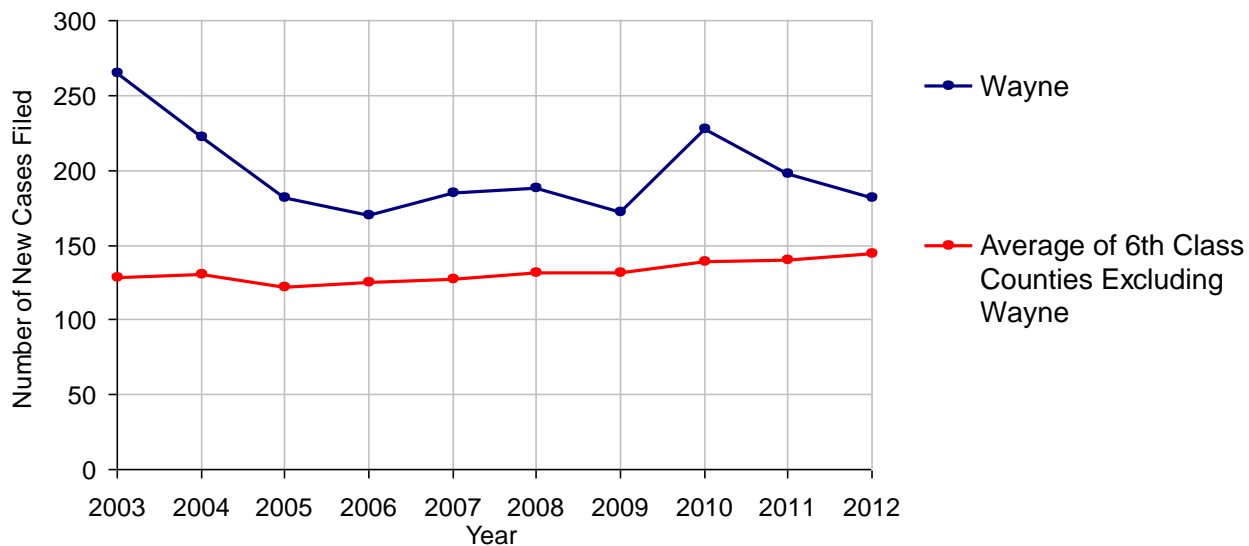
Class of County: 6th

No. of Common Pleas Court Judgeships: 1



<b>2012 Protection From Abuse</b>	<b>No. of Petitions</b>
Cases Pending 1/1/2012	14
New Cases Filed in 2012	182
<i>Of these, Petitions Requesting Temporary Orders: 182 (100.0%)</i>	
<i>Temporary Orders DENIED: 28 (15.4%), Temporary Orders GRANTED: 154 (84.6%)</i>	
<b>Cases Available for Processing</b>	<b>196</b>
Processed By:	
Temporary Order DENIED After Ex Parte Hearing and No Evidentiary Hearing Scheduled	5 2.6%
Temporary Order DISMISSED After Evidentiary Hearing and No Final Order Entered	6 3.1%
Final Order DENIED After Evidentiary Hearing Before a Judge	8 4.1%
Final Order GRANTED After Evidentiary Hearing Before a Judge	29 14.9%
Plaintiff Did Not Appear For Evidentiary Hearing	20 10.3%
Final Order by STIPULATION OR AGREEMENT Between the Parties	63 32.3%
Petition WITHDRAWN by Plaintiff	51 26.2%
TRANSFERRED to Another Jurisdiction	1 0.5%
DECEASED Party	1 0.5%
Other	11 5.6%
<b>Cases Processed</b>	<b>195 100.0%</b>
<b>Cases Pending 12/31/2012</b>	<b>1</b>

**PFA New Cases Filed, 2003-2012**

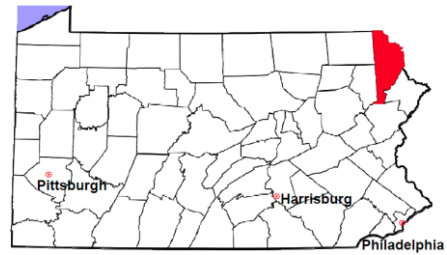


# Wayne County

2012 Population Estimate: 51,955

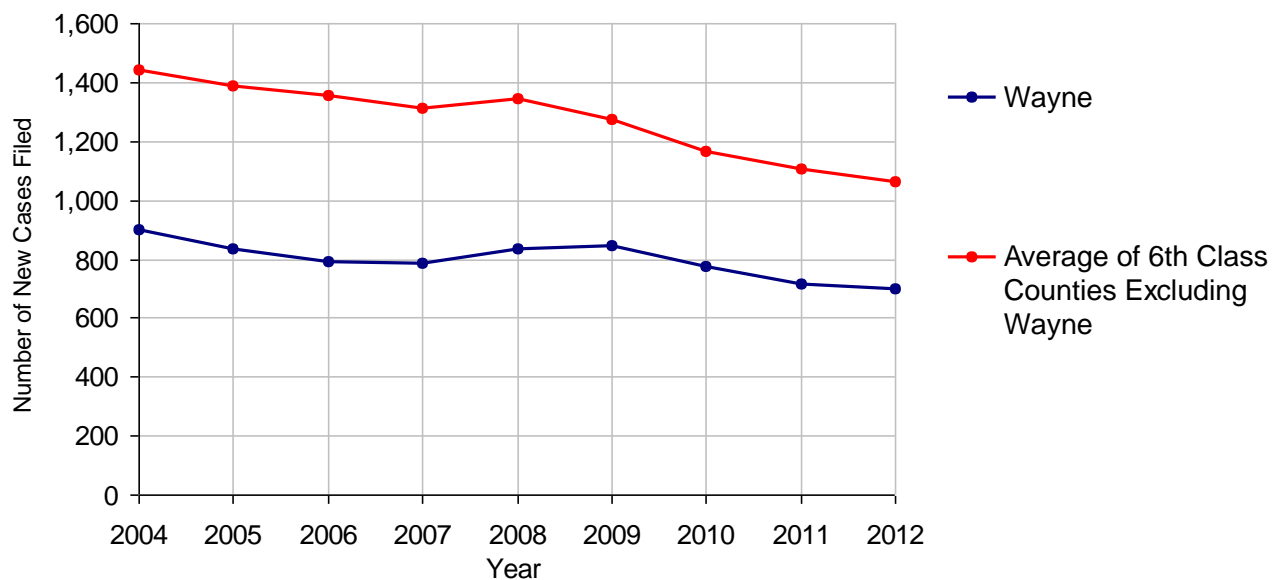
Class of County: 6th

No. of Common Pleas Court Judgeships: 1



<b>2012 Spousal &amp; Child Support</b>	<b>No. of Petitions</b>	
Cases Pending 1/1/2012	89	
New Cases Filed in 2012	701	
Dockets Transferred In (+)	8	
Dockets Transferred Out (-)	16	
<b>Cases Available for Processing</b>	<b>782</b>	
Processed By:		
Judge	24	3.5%
Intake Officer	653	96.5%
Hearing Officer	0	
Other	0	
<b>Cases Processed</b>	<b>677</b>	<b>100.0%</b>
<b>Cases Pending 12/31/2012</b>	<b>105</b>	

**Spousal & Child Support New Cases Filed, 2004-2012**

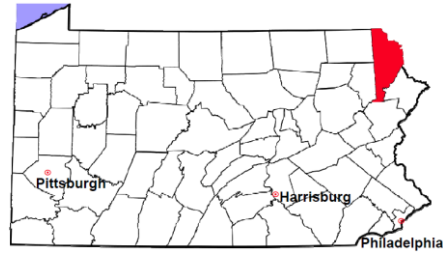


# Wayne County

2012 Population Estimate: 51,955

Class of County: 6th

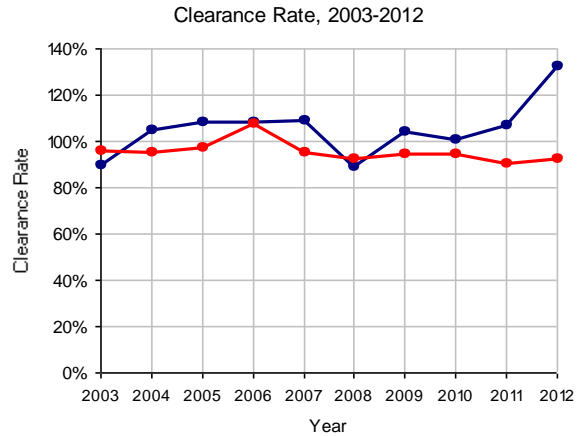
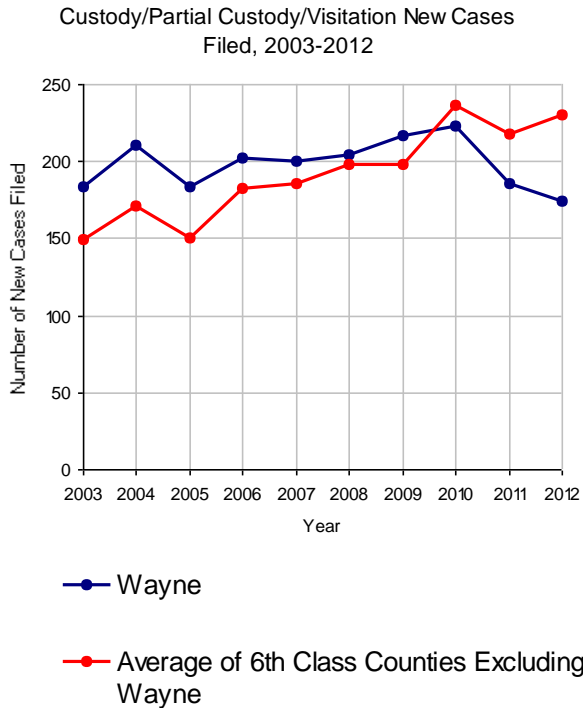
No. of Common Pleas Court Judgeships: 1



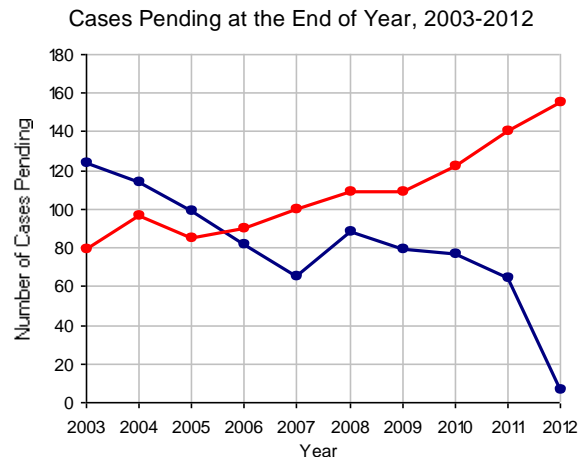
## 2012 Custody/Partial Custody/Visitation

No. of Petitions

Cases Pending 1/1/2012	64
New Cases Filed in 2012	174
<b>Cases Available for Processing</b>	<b>238</b>
Processed By:	
Judge	22 9.5%
Non-Judicial Officer	118 51.1%
Other	91 39.4%
<b>Cases Processed</b>	<b>231 100.0%</b>
<b>Cases Pending 12/31/2012</b>	<b>7</b>

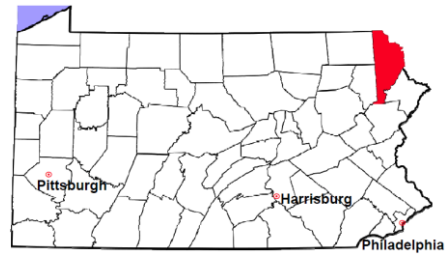


Note: Clearance Rate = Cases Processed / New Cases Filed



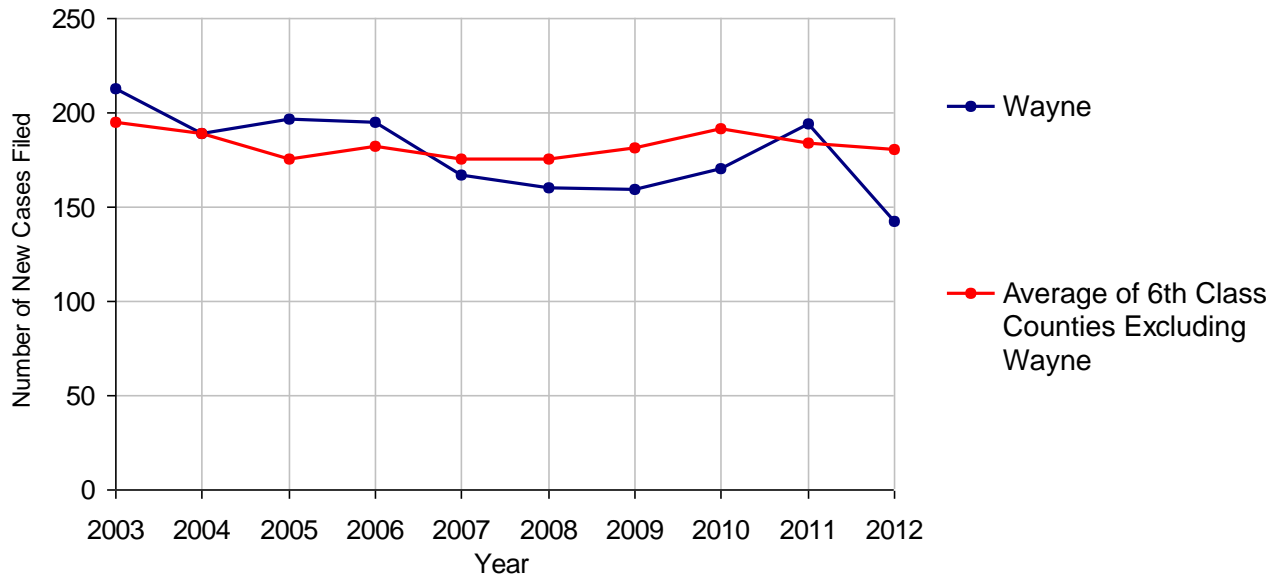
# Wayne County

2012 Population Estimate: 51,955  
 Class of County: 6th  
 No. of Common Pleas Court Judgeships: 1



<b>2012 Divorce</b>	<b>No. of Petitions</b>	
Cases Pending 1/1/2012	206	
New Cases Filed in 2012	142	
<b>Cases Available for Processing</b>	<b>348</b>	
Processed By:		
Contested Before a Judge	16	8.7%
Contested Before a Master	23	12.5%
Uncontested	99	53.8%
Other	46	25.0%
<b>Cases Processed</b>	<b>184</b>	<b>100.0%</b>
<b>Cases Pending 12/31/2012</b>	<b>164</b>	

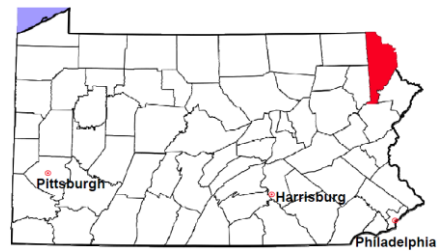
**Divorce New Cases Filed, 2003-2012**





# Wayne County

2012 Population Estimate: 51,955  
 Class of County: 6th  
 No. of Common Pleas Court Judgeships: 1

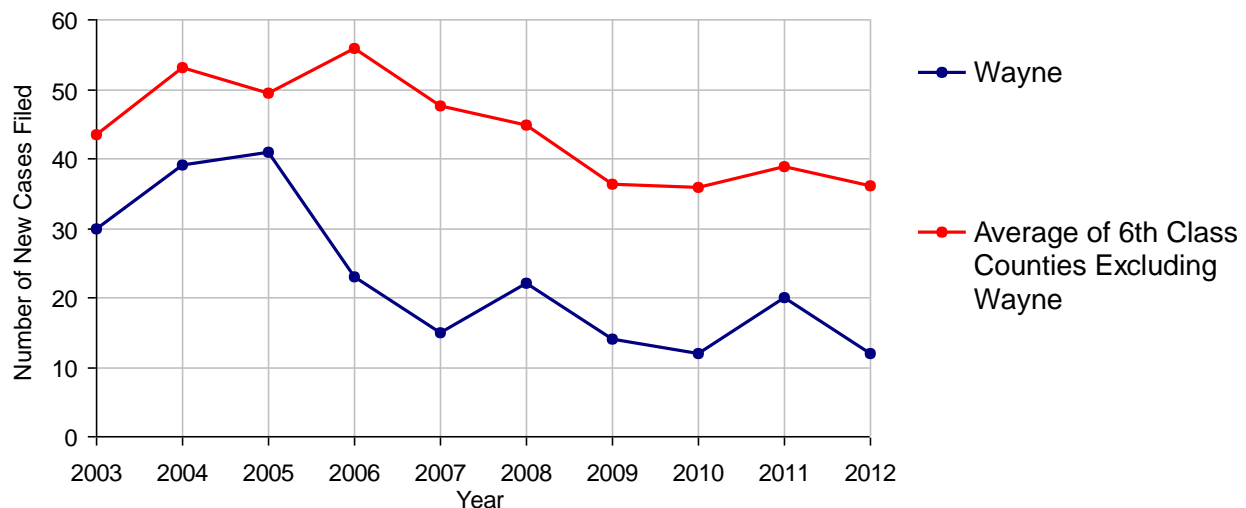


## 2012 Juvenile Dependency - Active Dependent Inventory

	Abuse/ Neglect	Status Offenses	Total
Cases Pending 1/1/2012	4	0	4
New Petitions Filed in 2012	11	1	12
Other	0	0	0
<b>Total Petitions Available for Processing</b>	<b>15</b>	<b>1</b>	<b>16</b>
Processed by:			
Adjudicated Dependent			
Judge	8	1	9
Master	0	0	0
Adjudicated NOT Dependent			
Judge	0	0	0
Master	0	0	0
Withdrawn/Dismissed/Inactive	1	0	1
Other	5	0	5
<b>Total Petitions Processed</b>	<b>14</b>	<b>1</b>	<b>15</b>
<b>Cases Pending 12/31/2012</b>	<b>1</b>	<b>0</b>	<b>1</b>

Data provided by CPCMS

Abuse/Neglect and Status Offenses New Cases Filed, 2003-2012



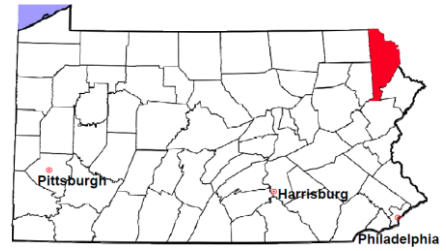
Note: Dependency data for 2002-2010 were collected manually. Dependency data for 2011 and 2012 were provided by CPCMS.

# Wayne County

2012 Population Estimate: 51,955

Class of County: 6th

No. of Common Pleas Court Judgeships: 1



## 2012 Juvenile Dependency - Adjudicated Dependent Inventory

	Abuse/ Neglect	Status Offenses	Total
Cases Pending 1/1/2012	37	3	40
New Adjudicated Dependent Cases	8	1	9
Other	3	0	3
<b>Total Adjudicated Dependent Cases</b>	<b>48</b>	<b>4</b>	<b>52</b>
<b><u>Court Supervision Terminated:</u></b>			
Family Reunification	0	0	0
Adoption	0	0	0
Placement with a Relative/Guardian	7 87.5%	0	7 87.5%
Aged Out	1 12.5%	0	1 12.5%
Other Permanency Outcomes*	0	0	0
Other**	0	0	0
<b>Total Adjudicated Dependent Cases Terminated</b>	<b>8 100.0%</b>	<b>0 100.0%</b>	<b>8 100.0%</b>
<b>Cases Pending 12/31/2012</b>	<b>40</b>	<b>4</b>	<b>44</b>

Data provided by CPCMS

\* Other Permanency Outcomes include: adjudicated delinquent, death due to natural causes, death due to negligence, emancipation, permanent living arrangement, and parent has come forward.

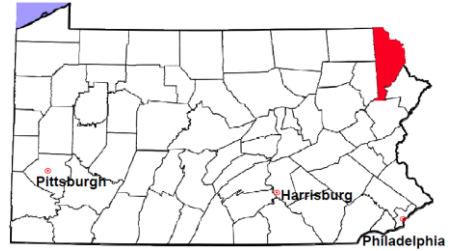
\*\* Other includes cases where court supervision is terminated due to transfer out of jurisdiction, withdrawal and administrative closure.

# Wayne County

2012 Population Estimate: 51,955

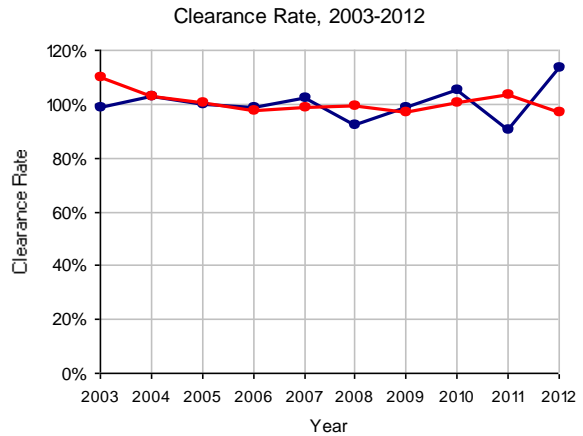
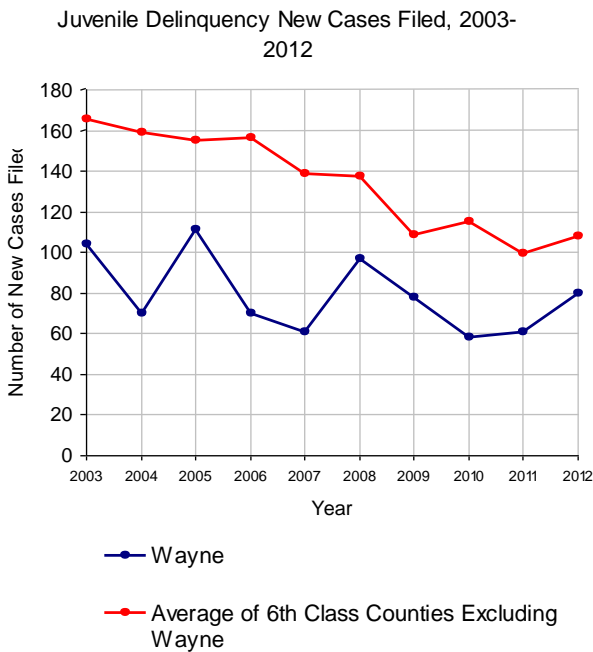
Class of County: 6th

No. of Common Pleas Court Judgeships: 1

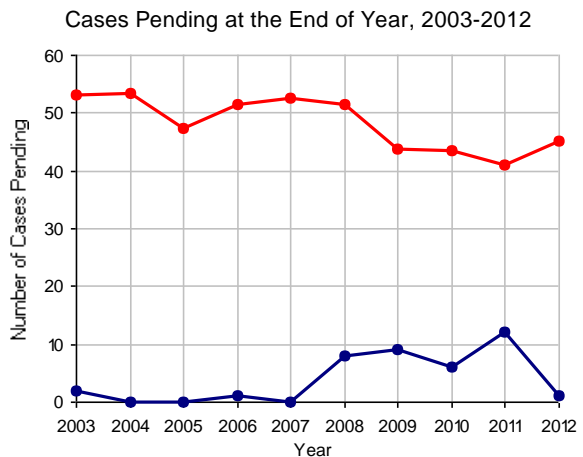


## 2012 Juvenile Delinquency

	No. of Cases
Cases Pending 1/1/2012	12
New Cases Filed in 2012	80
<b>Cases Available for Processing</b>	<b>92</b>
Processed By:	
Judge	56 61.5%
Non-Judicial Officer	26 28.6%
Other	9 9.9%
<b>Cases Processed</b>	<b>91 100.0%</b>
<b>Cases Pending 12/31/2012</b>	<b>1</b>

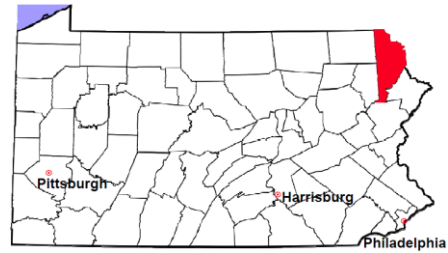


Note: Clearance Rate = Cases Processed / New Cases Filed



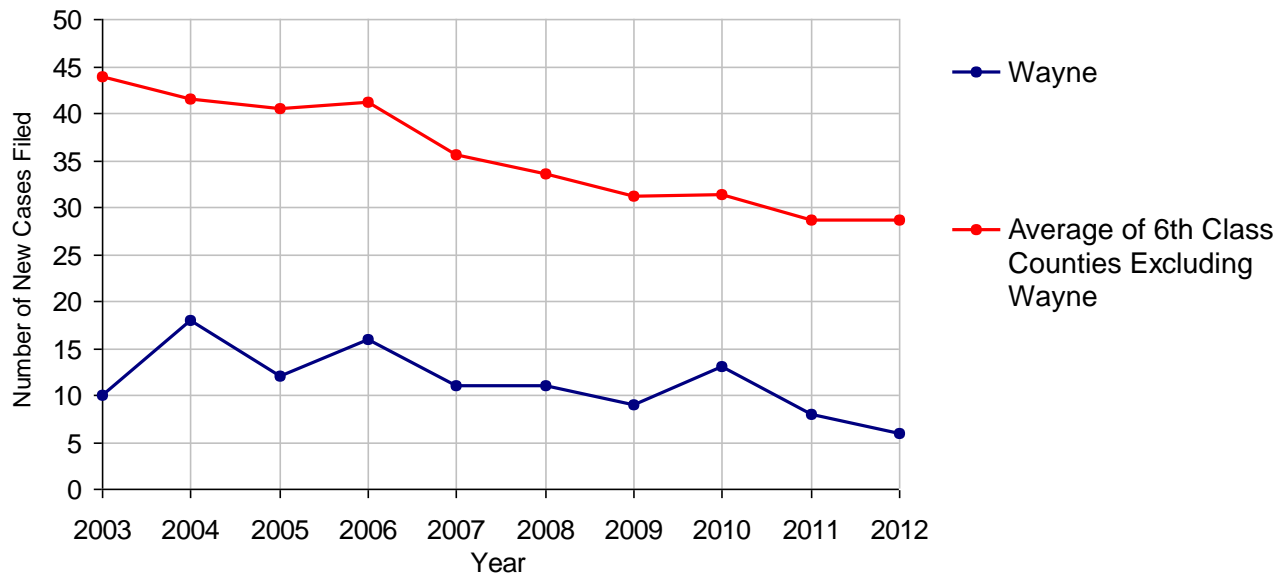
# Wayne County

2012 Population Estimate: 51,955  
 Class of County: 6th  
 No. of Common Pleas Court Judgeships: 1



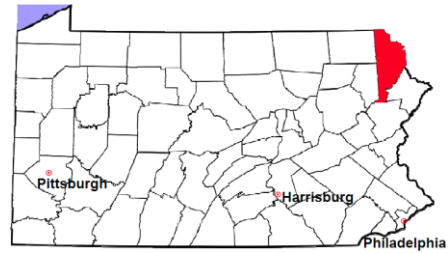
<b>2012 Accounts</b>	<b>No. of Cases</b>	
Cases Pending 1/1/2012	2	
New Cases Filed in 2012	6	
<b>Cases Available for Processing</b>	<b>8</b>	
Processed By:		
Contested before a Judge	1	25.0%
Contested before a Non-judicial Officer	0	
Uncontested	3	75.0%
Other	0	
<b>Cases Processed</b>	<b>4</b>	<b>100.0%</b>
<b>Cases Pending 12/31/2012</b>	<b>4</b>	

**Accounts New Cases Filed, 2003-2012**



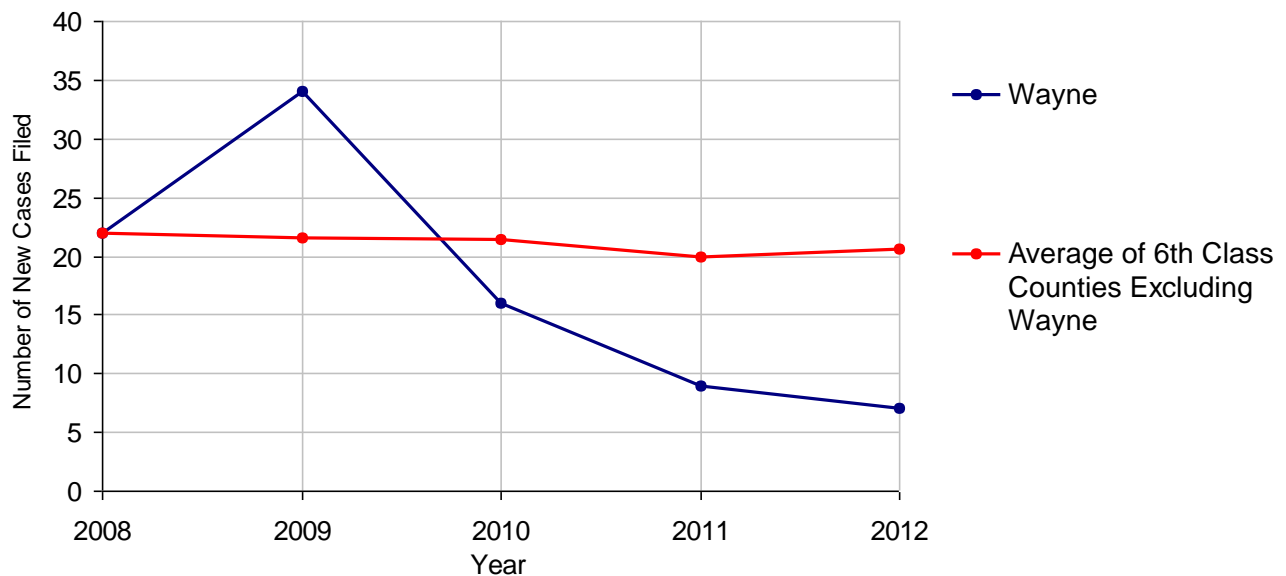
# Wayne County

2012 Population Estimate: 51,955  
 Class of County: 6th  
 No. of Common Pleas Court Judgeships: 1



<b>2012 Adoptions</b>		<b>No. of Cases</b>	
Cases Pending 1/1/2012		6	
New Cases Filed in 2012		7	
<b>Cases Available for Processing</b>		<b>13</b>	
Processed By:			
Contested before a Judge	Granted	2	18.2%
	Denied	0	
Uncontested	Granted	8	72.7%
	Denied	0	
Other		1	9.1%
<b>Cases Processed</b>		<b>11</b>	<b>100.0%</b>
<b>Cases Pending 12/31/2012</b>		<b>2</b>	

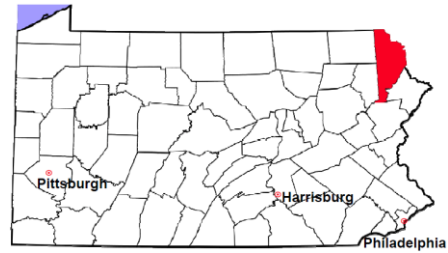
**Adoptions New Cases Filed, 2008-2012**



Note: Prior to 2008, each petition was counted as one new case, regardless of the number of children listed on the petition. Starting in 2008, each child listed on a petition is counted as a separate case. Therefore, statistics since 2008 should not be compared to statistics prior to 2008.

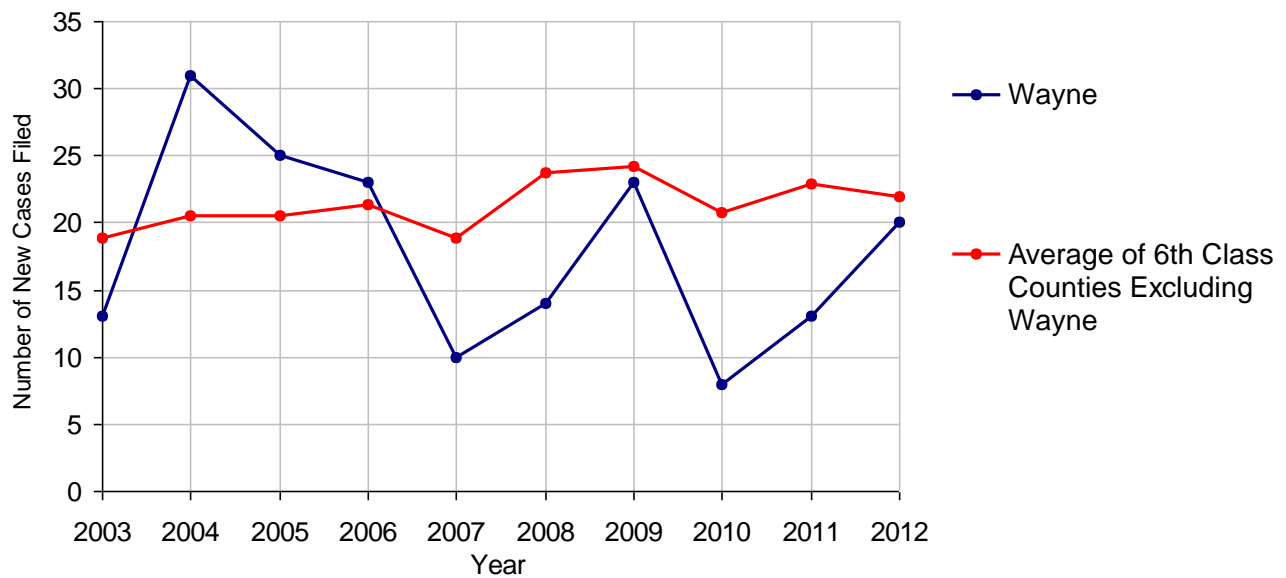
# Wayne County

2012 Population Estimate: 51,955  
 Class of County: 6th  
 No. of Common Pleas Court Judgeships: 1



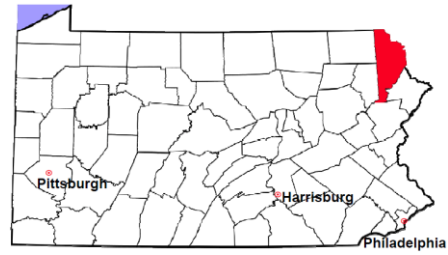
2012 Relinquishments/Terminations	No. of Cases
Cases Pending 1/1/2012	9
New Cases Filed in 2012	20
<b>Cases Available for Processing</b>	<b>29</b>
Processed By:	
Contested before a Judge	1      8.3%
Uncontested	9      75.0%
Other	2      16.7%
<b>Cases Processed</b>	<b>12      100.0%</b>
<b>Cases Pending 12/31/2012</b>	<b>17</b>

**Relinquishments/Terminations New Cases Filed, 2003-2012**



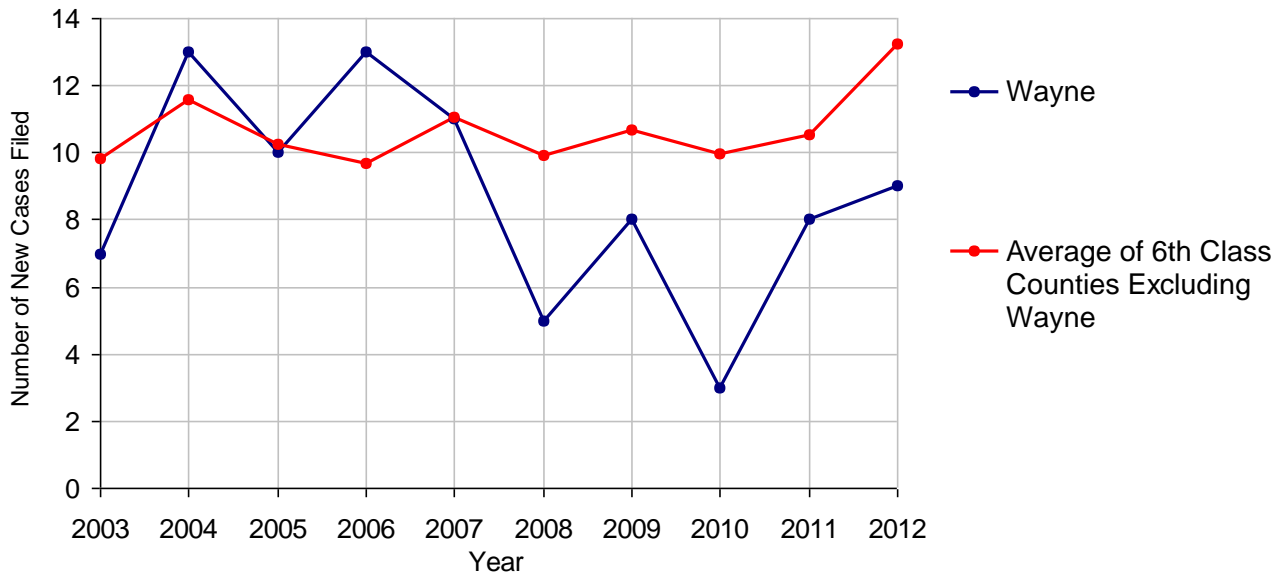
# Wayne County

2012 Population Estimate: 51,955  
 Class of County: 6th  
 No. of Common Pleas Court Judgeships: 1



<b>2012 Appointment of Guardians</b>		<b>No. of Cases</b>
Cases Pending 1/1/2012		1
New Cases Filed in 2012		9
<b>Cases Available for Processing</b>		<b>10</b>
Processed By:		
Contested before a Judge	1	12.5%
Uncontested	6	75.0%
Other	1	12.5%
<b>Cases Processed</b>	<b>8</b>	<b>100.0%</b>
<b>Cases Pending 12/31/2012</b>		<b>2</b>

**Appointment of Guardians New Cases Filed, 2003-2012**

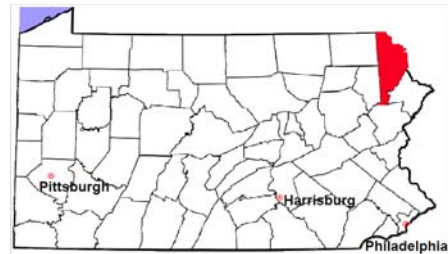


# Wayne County

2012 Population Estimate: 51,955

Class of County: 6th

No. of Common Pleas Court Judgeships: 1



## 2012 Jury Yield and Utilization

### Jury Yield

Qualification Questionnaires/Summonses Mailed:	2,492	A		
Returned Undeliverable:	188	B	7.5%	Of Qualification Questionnaires/ Summonses Mailed
Not Responded to:	143	C	5.7%	
the Number of Prospective Jurors:				
Disqualified:	396	D	15.9%	
Exempted:	153	E	6.1%	
Excused:	543	F	21.8%	
Deferred to New Term:	101	G	4.1%	
Deferred from Previous Term:	68	H	2.7%	
<b>Total Number of Qualified Jurors Available for Service:</b>	<b>1,036</b>	<b>I</b>	<b>41.6%</b>	

$I = A - B - C - D - E - F - G + H$

### Jury Utilization

the Number of Jurors:			
Reporting for Service:	932	90.0%	Of Jurors Qualified and Available
Told Not to Report for Service:	0		
Sent to Courtroom for Jury Selection (Voir Dire):	472	50.6%	Of Jurors Reporting for Service
Impanelled or Sworn (jurors/alternates):	224	24.0%	
Removed for Cause/Hardship:	16		
Removed by Peremptory Challenge:	232		

### Jury Costs

<b>Total Annual Budget for Juror Operations:</b>	<b>\$36,683.00</b>	<b>J</b>
<b>Average Cost Per Juror:</b>	<b>\$14.72</b>	<b>K</b>

$K = J/A$

In mid-2011, AOPC began utilizing the National Center for State Courts' Jury Managers' Toolbox for collecting jury data. In 2012, the counties began providing additional jury data which included information about the summoning practices in the counties. With this additional data, we can now see not only how many citizens come to our courthouses every day in anticipation of serving on a jury, but the number of citizens actually summonsed and the number of those summonsed who are exempt, excused or disqualified from service. With this wider view of the jury process, we can determine the efficiency with which our courts operate, and with the assistance of the Jury Managers' Toolbox find guidance in streamlining the jury summoning practices.