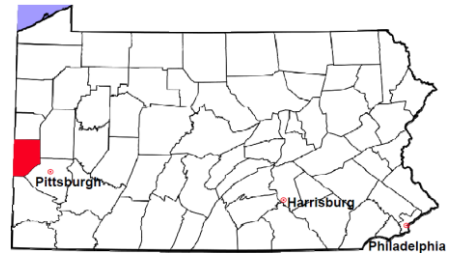


Beaver County

2012 Population Estimate: 170,245
 Class of County: 4th
 No. of Common Pleas Court Judgeships: 7



2012 Criminal	No. of Cases
---------------	--------------

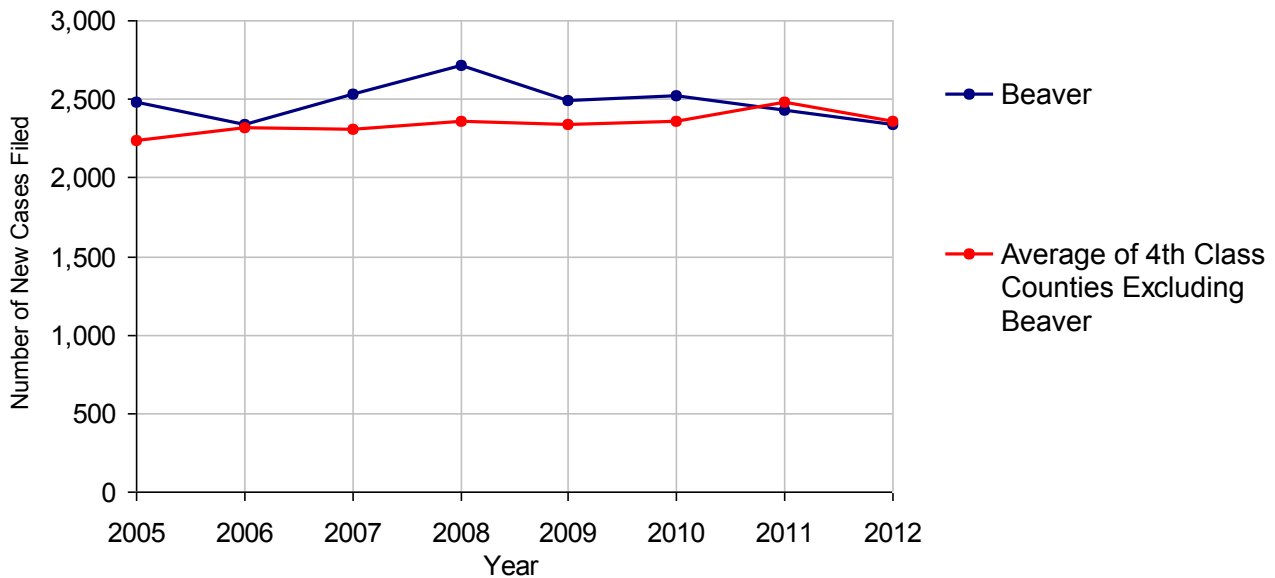
Cases Pending 1/1/2012	880
New Cases Filed in 2012	2,335
Reopened Cases	213
Cases Available for Disposition	3,428
Disposed by:	
Withdrawn/Dismissed	211 8.3%
ARD	607 23.8%
Guilty Plea	1,551 60.7%
Non-Jury Trial	27 1.1%
Jury Trial	29 1.1%
Inactive	58 2.3%
Other	71 2.8%
Total Cases Disposed	2,554 100.0%
Cases Pending 12/31/2012	874
Cases Awaiting Sentencing	21



Age of Pending Cases as of 12/31/2012		
0-60 Days	338	38.7%
61-120 Days	201	23.0%
121-180 Days	132	15.1%
181-240 Days	59	6.8%
241-300 Days	41	4.7%
301-360 Days	17	1.9%
Over 360 Days	86	9.8%
Total	874	100.0%

Data provided by CPCMS

Criminal New Cases Filed, 2005-2012

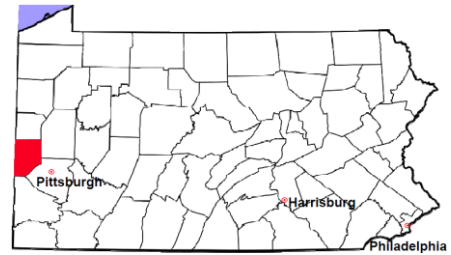


Beaver County

2012 Population Estimate: 170,245

Class of County: 4th

No. of Common Pleas Court Judgeships: 7



2012 Criminal - New Cases by Case Type

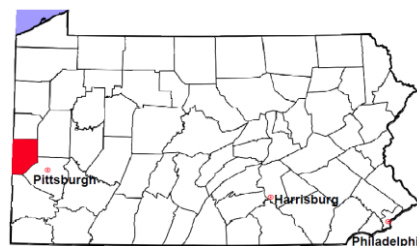


Case Type	Felony	Misdemeanor	Summary /Ungraded	Total
Person	177	200	0	377
Property	359	369	2	730
Drug	195	187	0	382
Weapon	27	7	0	34
Public Order	34	131	2	167
Motor Vehicle - DWI/DUI	0	627	0	627
Motor Vehicle - Other	3	15	0	18
Other	0	0	0	0
Total	795	1,536	4	2,335
	34.0%	65.8%	0.2%	100.0%

Data provided by CPCMS

Beaver County

2012 Population Estimate: 170,245
 Class of County: 4th
 No. of Common Pleas Court Judgeships: 7

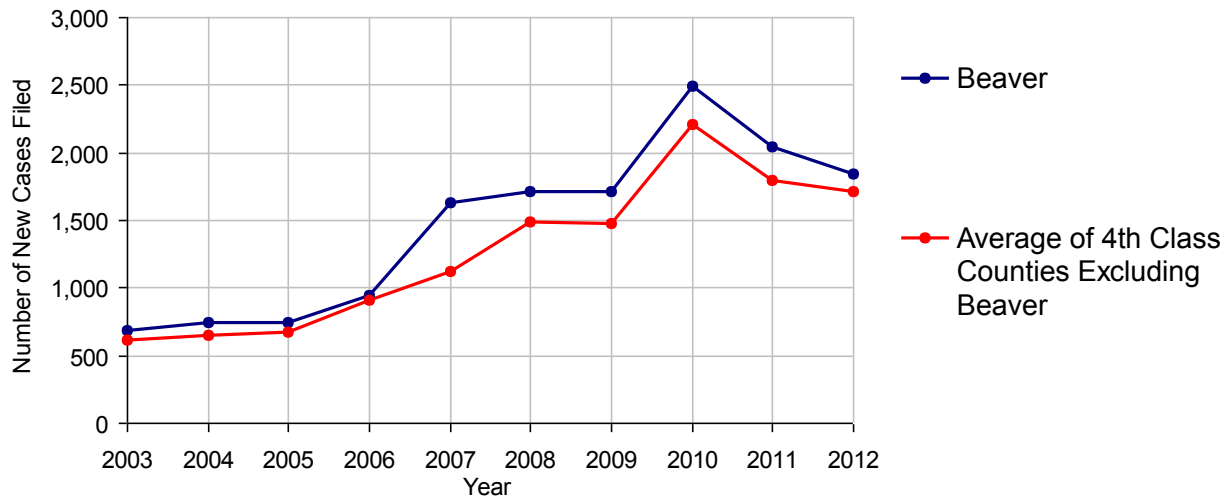


2012 Civil	Civil Action	Other	Total
Cases Pending 1/1/2012	4,981	2,782	7,763 (R)
Docketed Cases	883	964	1,847
Arbitration Appeals	4	1	5
Transferred In	0	0	0
Returned to Active	13	8	21
Cases Available for Processing	5,881	3,755	9,636
Disposed By:			
Default Judgments	301	348	649
Cases Decided by Arbitration Board	48	26	74
Dispositive Motions	8	1	9
Settlements	166	101	267
Moved to Inactive Status	3,503	1,705	5,208
Transferred/Withdrawn	5	2	7
Administrative Purge	0	0	0
Other	542	678	1,220
Jury Trial	8	0	8
Non-Jury Trial	0	13	13
Total Cases Disposed	4,581	2,874	7,455
Cases Pending 12/31/2012	1,300	881	2,181

Age of Pending Cases as of 12/31/2012 (Civil Action Only)		
0-6 months	334	25.7%
7-12 months	247	19.0%
13-18 months	203	15.6%
19-24 months	159	12.2%
25-30 months	156	12.0%
31-36 months	33	2.5%
37-42 months	25	1.9%
43-48 months	22	1.7%
49-54 months	14	1.1%
55-60 months	9	0.7%
61-66 months	10	0.8%
67-72 months	4	0.3%
Over 72 months	84	6.5%
Total	1,300	100.0%

(R) - Revised

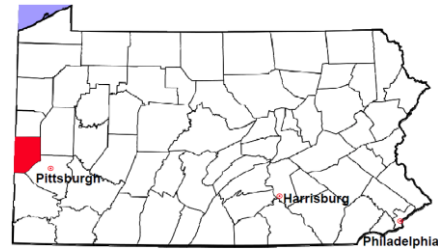
Docketed Cases, 2003-2012



Note: Prior to June 2010, docketed cases under the "Other" category were not reported. The inclusion of these cases starting from June 2010 may contribute to an increase in docketed cases from 2009 to 2010.

Beaver County

2012 Population Estimate: 170,245
 Class of County: 4th
 No. of Common Pleas Court Judgeships: 7



2012 Civil - Docketed Cases Listed by Case Type

TORT	240	13.0%
<i>(does not include mass tort)</i>		
Intentional	5	
Malicious Prosecution	0	
Motor Vehicle	145	
Nuisance	0	
Premise Liability	41	
Product Liability	4	
Slander/Libel/Defamation	0	
Other	45	
MASS TORT	3	0.2%
Asbestos	3	
Tobacco	0	
Toxic Tort - DES	0	
Toxic Tort - Implant	0	
Toxic Waste	0	
Other	0	
PROFESSIONAL LIABILITY	28	1.5%
Dental	1	
Legal	1	
Medical Malpractice	21	
Other	5	
CONTRACT	583	31.6%
<i>(does not include judgments)</i>		
Buyer Plaintiff	12	
Debt Collection: Credit Card	350	
Debt Collection: Other	186	
Employment Dispute:		
Employment Dispute: Discriminatio	3	
Employment Dispute: Other	2	
Other	30	

REAL PROPERTY	595	32.2%
Ejectment*	63	
Eminent Domain/Condemnation	3	
Ground Rent	0	
Landlord/Tenant Dispute	29	
Mortgage Forclosures:		
Residential*	420	
Commercial*	43	
Partition of Real Property*	4	
Quiet Title*	23	
Other*	10	
CIVIL APPEALS	231	12.5%
<i>- Administrative Agencies</i>		
Board of Assessment*	14	
Board of Elections*	0	
Dept. of Transportation*	82	
Zoning Board*	2	
Statutory Appeal - Other*	10	
Other*	123	
MISCELLANEOUS	167	9.0%
Common Law/		
Statutory Arbitration*	0	
Declaratory Judgment*	6	
Mandamus*	4	
Non-Domestic Relations		
Restraining Order*	1	
Quo Warranto*	0	
Replevin*	10	
Other*	146	
TOTAL DOCKETED CASES:	1,847	100%

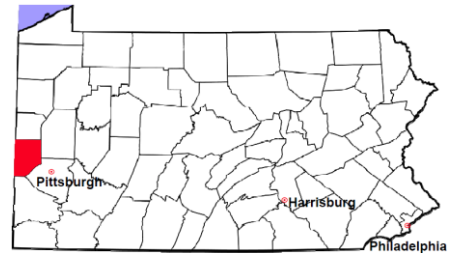
Of the Docketed Cases:

Pro Se Filings: 157 8.5% Class Action Suits: 0 MDJ Appeals: 187 10.1%

* Civil Other

Beaver County

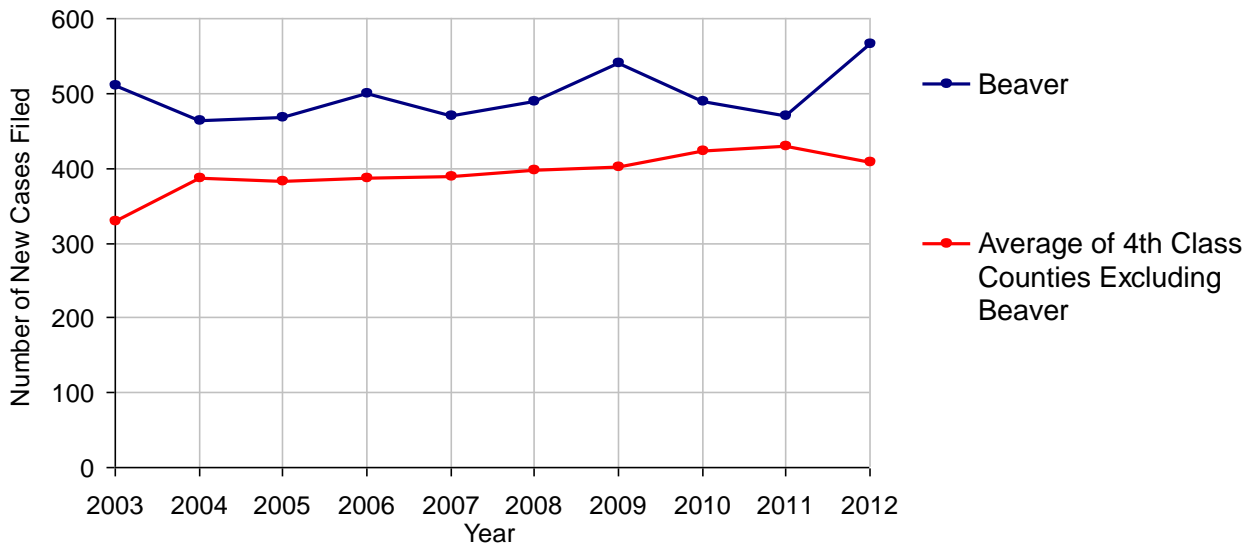
2012 Population Estimate: 170,245
 Class of County: 4th
 No. of Common Pleas Court Judgeships: 7



2012 Protection From Abuse

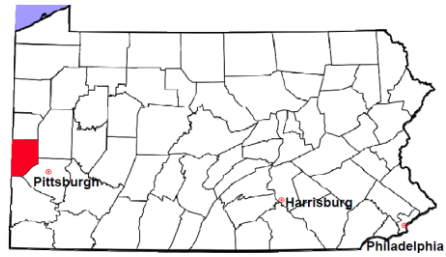
	No. of Petitions
Cases Pending 1/1/2012	77
New Cases Filed in 2012	566
<i>Of these, Petitions Requesting Temporary Orders: 566 (100.0%)</i>	
<i>Temporary Orders DENIED: 56 (9.9%), Temporary Orders GRANTED: 510 (90.1%)</i>	
Cases Available for Processing	643
Processed By:	
Temporary Order DENIED After Ex Parte Hearing and No Evidentiary Hearing Scheduled	50 9.2%
Temporary Order DISMISSED After Evidentiary Hearing and No Final Order Entered	99 18.2%
Final Order DENIED After Evidentiary Hearing Before a Judge	4 0.7%
Final Order GRANTED After Evidentiary Hearing Before a Judge	76 14.0%
Plaintiff Did Not Appear For Evidentiary Hearing	108 19.9%
Final Order by STIPULATION OR AGREEMENT Between the Parties	133 24.5%
Petition WITHDRAWN by Plaintiff	72 13.3%
TRANSFERRED to Another Jurisdiction	1 0.2%
DECEASED Party	0
Other	0
Cases Processed	543 100.0%
Cases Pending 12/31/2012	100

PFA New Cases Filed, 2003-2012



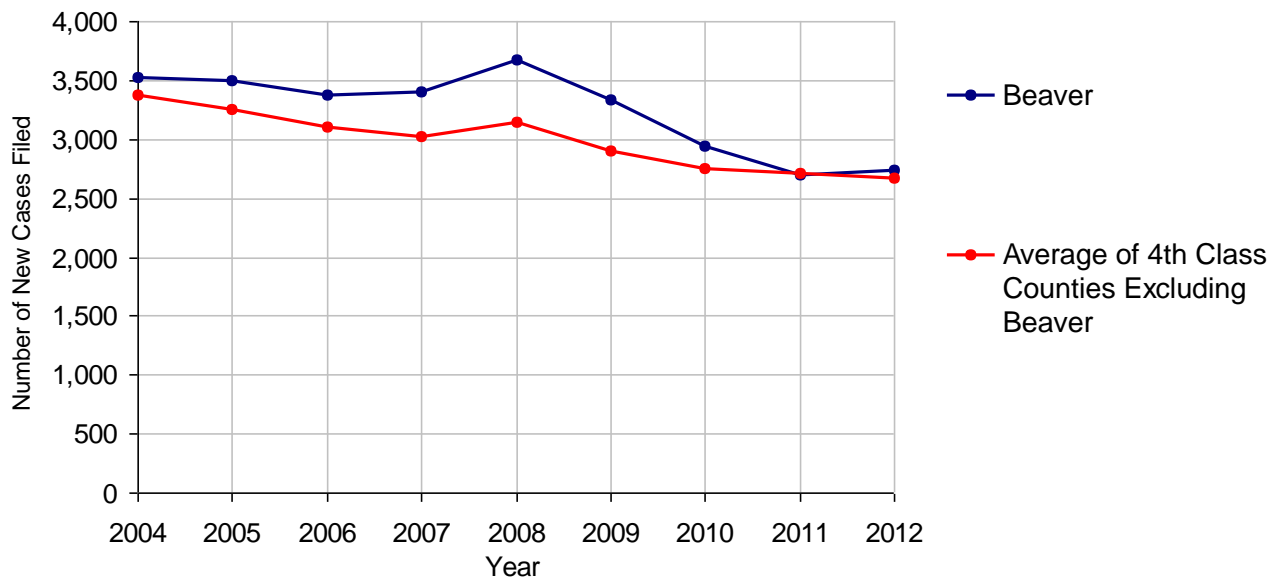
Beaver County

2012 Population Estimate: 170,245
 Class of County: 4th
 No. of Common Pleas Court Judgeships: 7



2012 Spousal & Child Support	No. of Petitions	
Cases Pending 1/1/2012	392	
New Cases Filed in 2012	2,735	
Dockets Transferred In (+)	33	
Dockets Transferred Out (-)	39	
Cases Available for Processing	3,121	
Processed By:		
Judge	132	4.9%
Intake Officer	2,554	95.1%
Hearing Officer	0	
Other	0	
Cases Processed	2,686	100.0%
Cases Pending 12/31/2012	435	

Spousal & Child Support New Cases Filed, 2004-2012

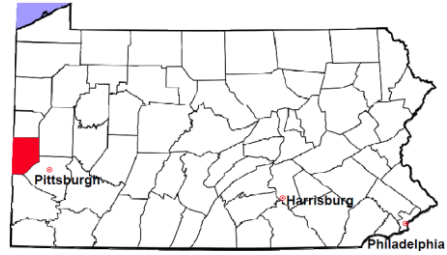


Beaver County

2012 Population Estimate: 170,245

Class of County: 4th

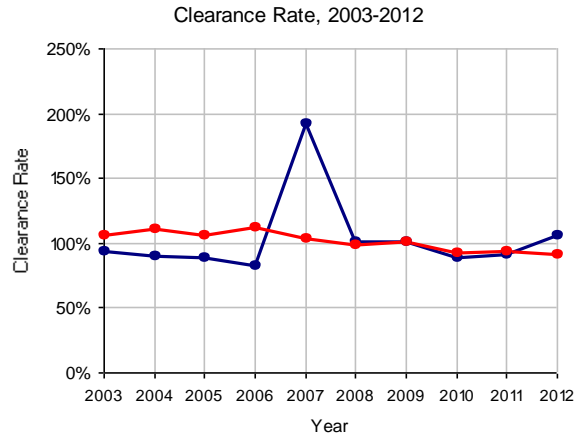
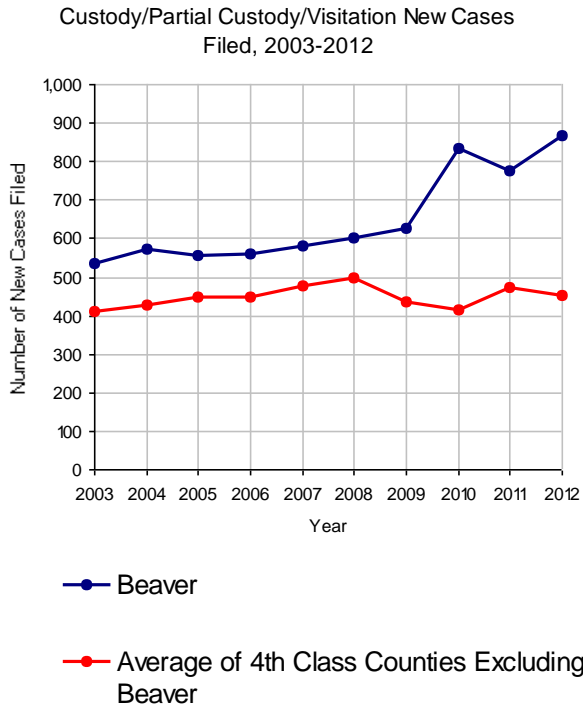
No. of Common Pleas Court Judgeships: 7



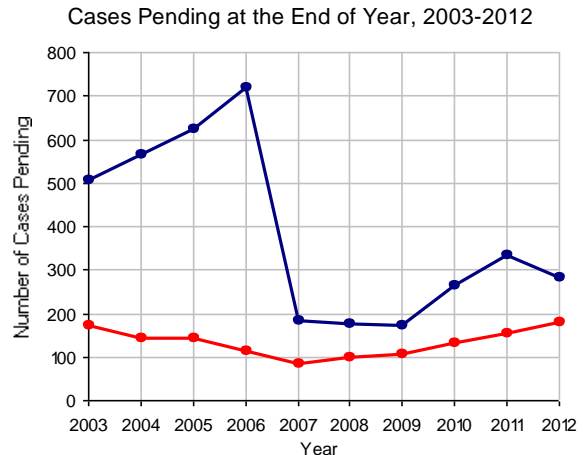
2012 Custody/Partial Custody/Visitation

No. of Petitions

Cases Pending 1/1/2012	333
New Cases Filed in 2012	866
Cases Available for Processing	1,199
Processed By:	
Judge	384 41.9%
Non-Judicial Officer	457 49.9%
Other	75 8.2%
Cases Processed	916 100.0%
Cases Pending 12/31/2012	283

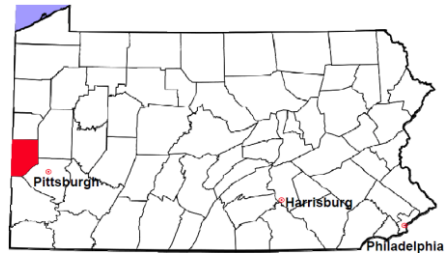


Note: Clearance Rate = Cases Processed / New Cases Filed



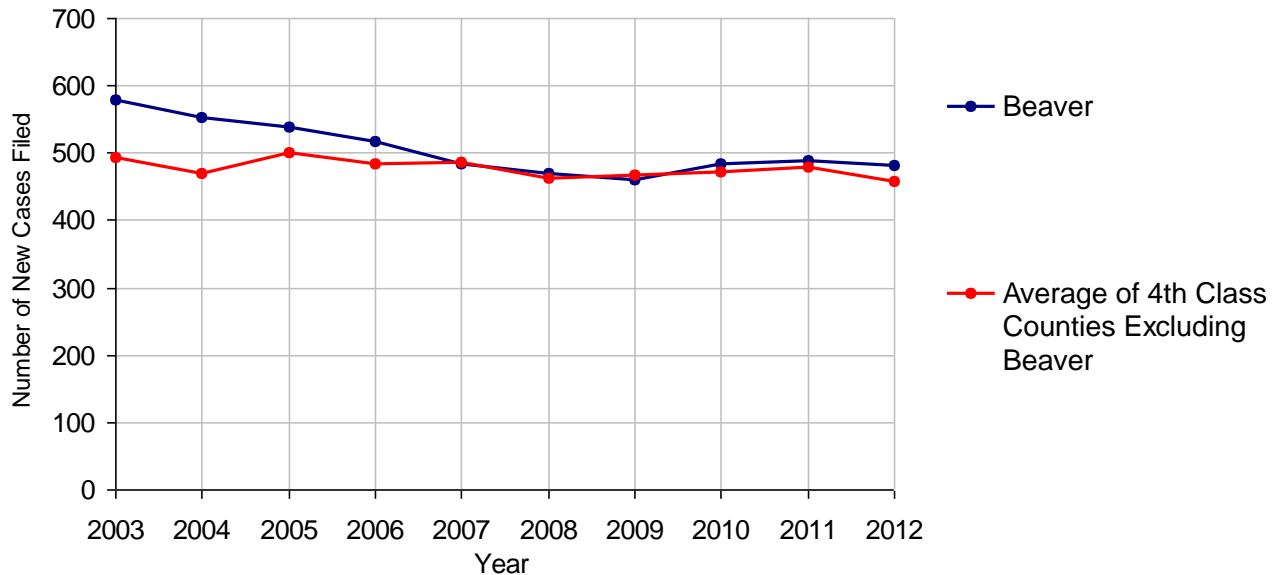
Beaver County

2012 Population Estimate: 170,245
 Class of County: 4th
 No. of Common Pleas Court Judgeships: 7



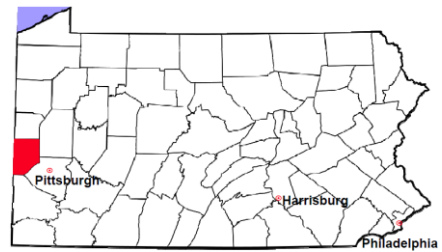
2012 Divorce	No. of Petitions	
Cases Pending 1/1/2012	764	
New Cases Filed in 2012	481	
Cases Available for Processing	1,245	
Processed By:		
Contested Before a Judge	7	1.2%
Contested Before a Master	0	
Uncontested	417	69.8%
Other	173	29.0%
Cases Processed	597	100.0%
Cases Pending 12/31/2012	648	

Divorce New Cases Filed, 2003-2012



Beaver County

2012 Population Estimate: 170,245
 Class of County: 4th
 No. of Common Pleas Court Judgeships: 7



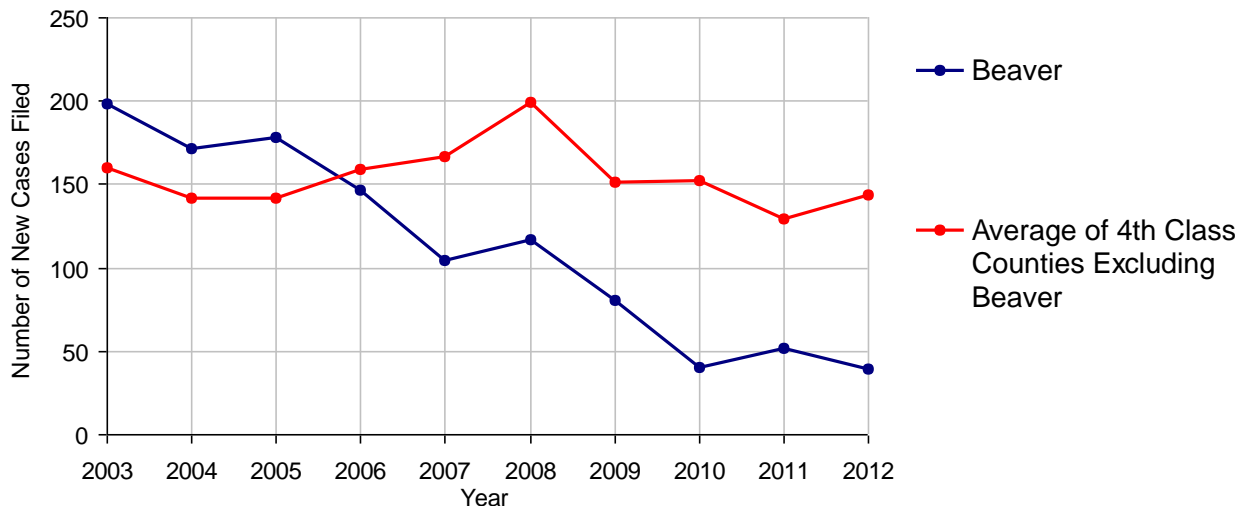
2012 Juvenile Dependency - Active Dependent Inventory



	Abuse/ Neglect	Status Offenses	Total
Cases Pending 1/1/2012	9	0	9
New Petitions Filed in 2012	35	4	39
Other	6	0	6
Total Petitions Available for Processing	50	4	54
Processed by:			
Adjudicated Dependent			
Judge	8	0	8
Master	23	2	25
Adjudicated NOT Dependent			
Judge	6	0	6
Master	3	1	4
Withdrawn/Dismissed/Inactive	0	0	0
Other	4	0	4
Total Petitions Processed	44	3	47
Cases Pending 12/31/2012	6	1	7

Data provided by CPCMS

Abuse/Neglect and Status Offenses New Cases Filed, 2003-2012



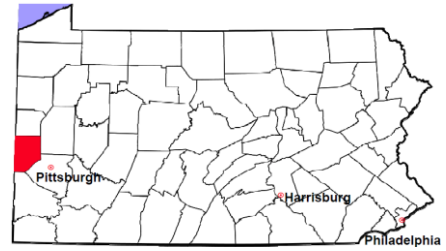
Note: Dependency data for 2002-2010 were collected manually. Dependency data for 2011 and 2012 were provided by CPCMS.

Beaver County

2012 Population Estimate: 170,245

Class of County: 4th

No. of Common Pleas Court Judgeships: 7



2012 Juvenile Dependency - Adjudicated Dependent Inventory



	Abuse/ Neglect	Status Offenses	Total
Cases Pending 1/1/2012	45	3	48
New Adjudicated Dependent Cases	31	2	33
Other	4	0	4
Total Adjudicated Dependent Cases	80	5	85
<u>Court Supervision Terminated:</u>			
Family Reunification	4 11.8%	1 100.0%	5 14.3%
Adoption	8 23.5%	0	8 22.9%
Placement with a Relative/Guardian	11 32.4%	0	11 31.4%
Aged Out	4 11.8%	0	4 11.4%
Other Permanency Outcomes*	1 2.9%	0	1 2.9%
Other**	6 17.6%	0	6 17.1%
Total Adjudicated Dependent Cases Terminated	34 100.0%	1 100.0%	35 100.0%
Cases Pending 12/31/2012	46	4	50

Data provided by CPCMS

* Other Permanency Outcomes include: adjudicated delinquent, death due to natural causes, death due to negligence, emancipation, permanent living arrangement, and parent has come forward.

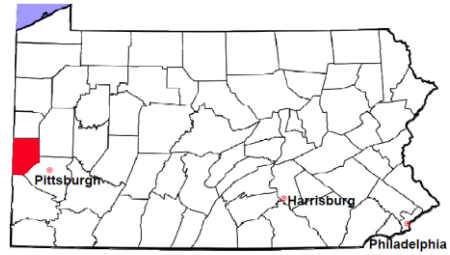
** Other includes cases where court supervision is terminated due to transfer out of jurisdiction, withdrawal and administrative closure.

Beaver County

2012 Population Estimate: 170,245

Class of County: 4th

No. of Common Pleas Court Judgeships: 7



2012 Juvenile Delinquency

No. of Cases

Cases Pending 1/1/2012 **33**

New Cases Filed in 2012 **413**

Cases Available for Processing 446

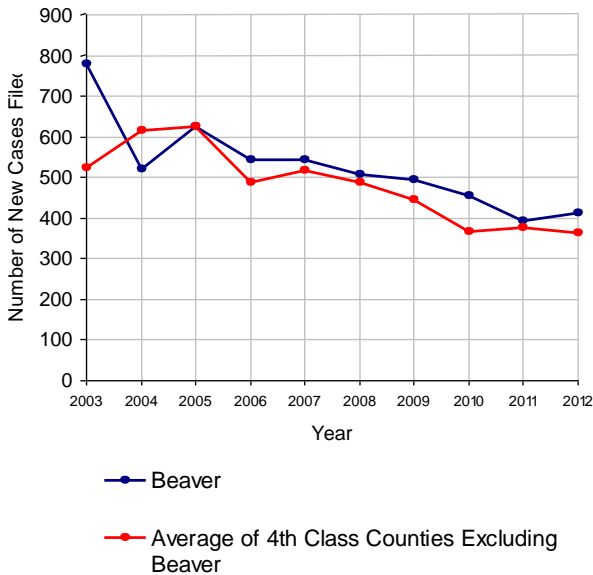
Processed By:

Judge	10	2.5%
Non-Judicial Officer	316	77.8%
Other	80	19.7%

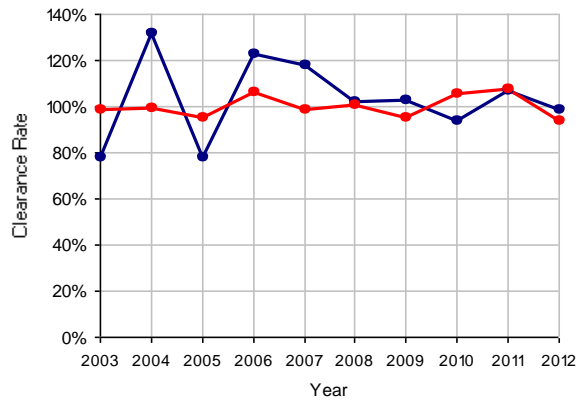
Cases Processed 406 100.0%

Cases Pending 12/31/2012 40

Juvenile Delinquency New Cases Filed, 2003-2012

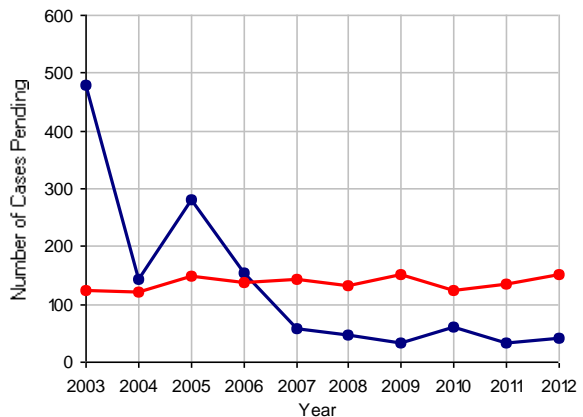


Clearance Rate, 2003-2012



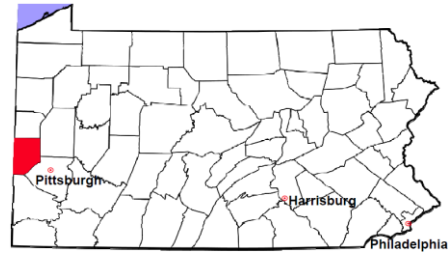
Note: Clearance Rate = Cases Processed / New Cases Filed

Cases Pending at the End of Year, 2003-2012



Beaver County

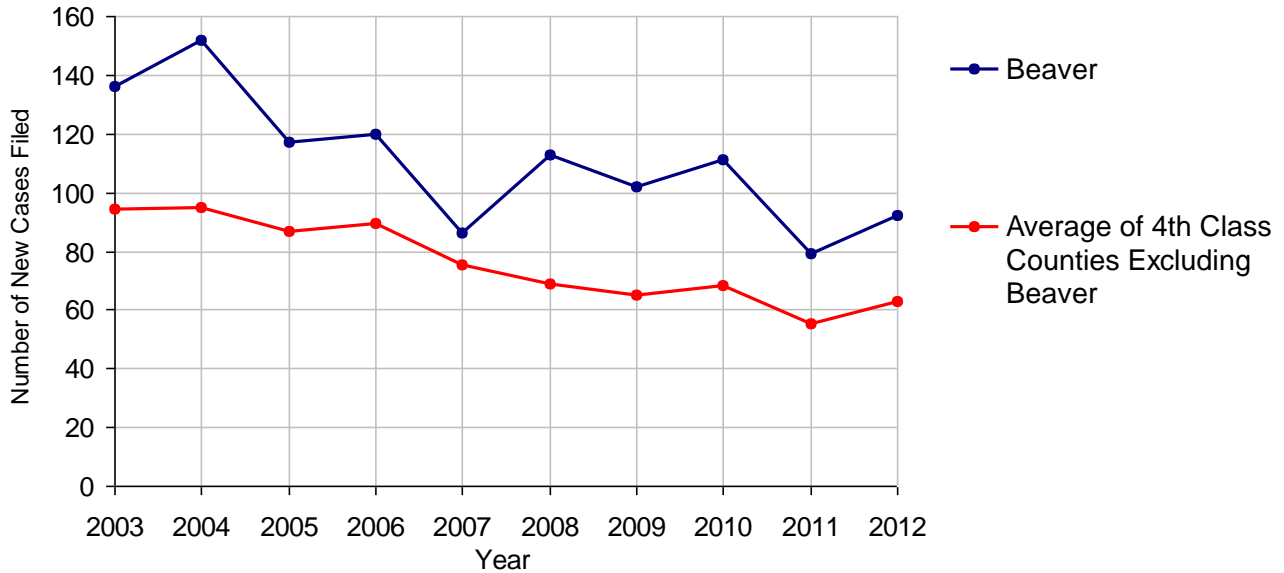
2012 Population Estimate: 170,245
 Class of County: 4th
 No. of Common Pleas Court Judgeships: 7



2012 Accounts

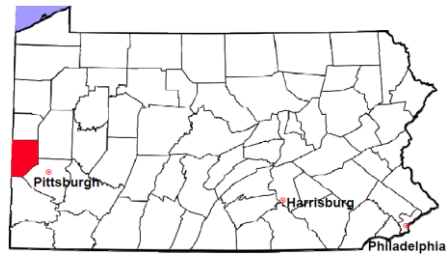
	No. of Cases	
Cases Pending 1/1/2012	14	
New Cases Filed in 2012	92	
Cases Available for Processing	106	
Processed By:		
Contested before a Judge	3	3.3%
Contested before a Non-judicial Officer	0	
Uncontested	81	90.0%
Other	6	6.7%
Cases Processed	90	100.0%
Cases Pending 12/31/2012	16	

Accounts New Cases Filed, 2003-2012



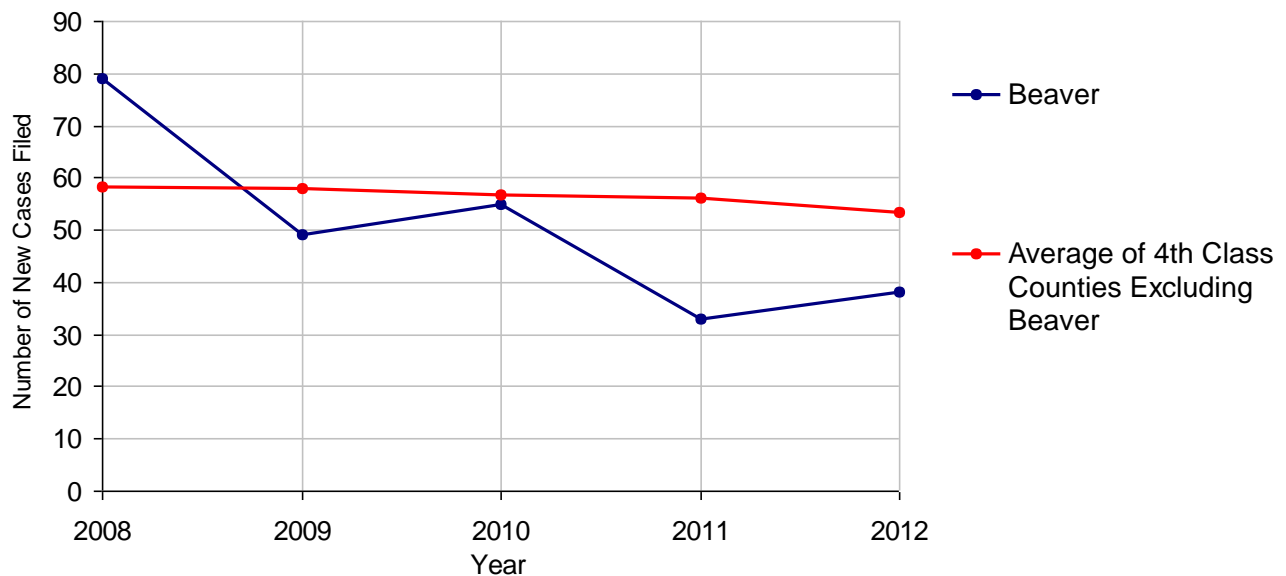
Beaver County

2012 Population Estimate: 170,245
 Class of County: 4th
 No. of Common Pleas Court Judgeships: 7



2012 Adoptions		No. of Cases	
Cases Pending 1/1/2012		3	
New Cases Filed in 2012		38	
Cases Available for Processing		41	
Processed By:			
Contested before a Judge	Granted	0	
	Denied	0	
Uncontested	Granted	37	100.0%
	Denied	0	
Other		0	
Cases Processed		37	100.0%
Cases Pending 12/31/2012		4	

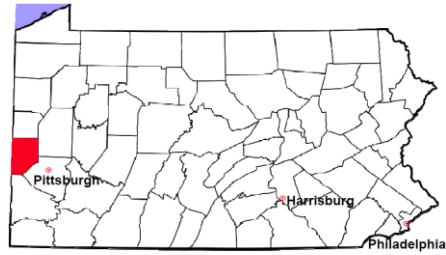
Adoptions New Cases Filed, 2008-2012



Note: Prior to 2008, each petition was counted as one new case, regardless of the number of children listed on the petition. Starting in 2008, each child listed on a petition is counted as a separate case. Therefore, statistics since 2008 should not be compared to statistics prior to 2008.

Beaver County

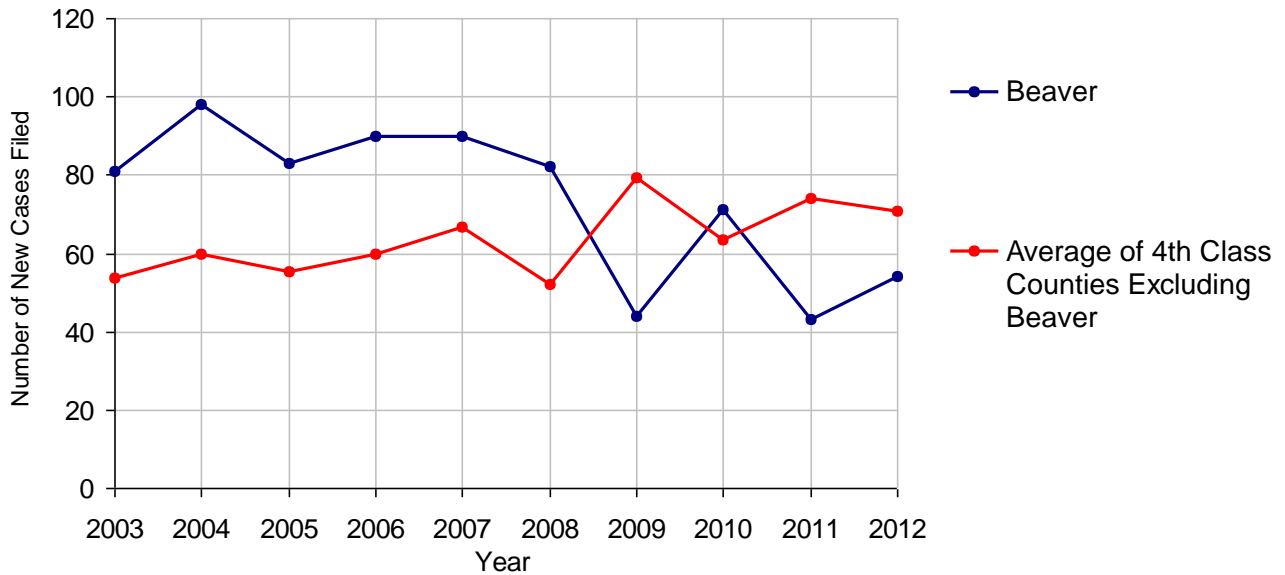
2012 Population Estimate: 170,245
 Class of County: 4th
 No. of Common Pleas Court Judgeships: 7



2012 Relinquishments/Terminations

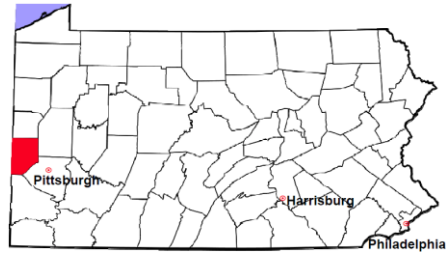
	No. of Cases
Cases Pending 1/1/2012	8
New Cases Filed in 2012	54
Cases Available for Processing	62
Processed By:	
Contested before a Judge	36 64.3%
Uncontested	10 17.9%
Other	10 17.9%
Cases Processed	56 100.0%
Cases Pending 12/31/2012	6

Relinquishments/Terminations New Cases Filed, 2003-2012



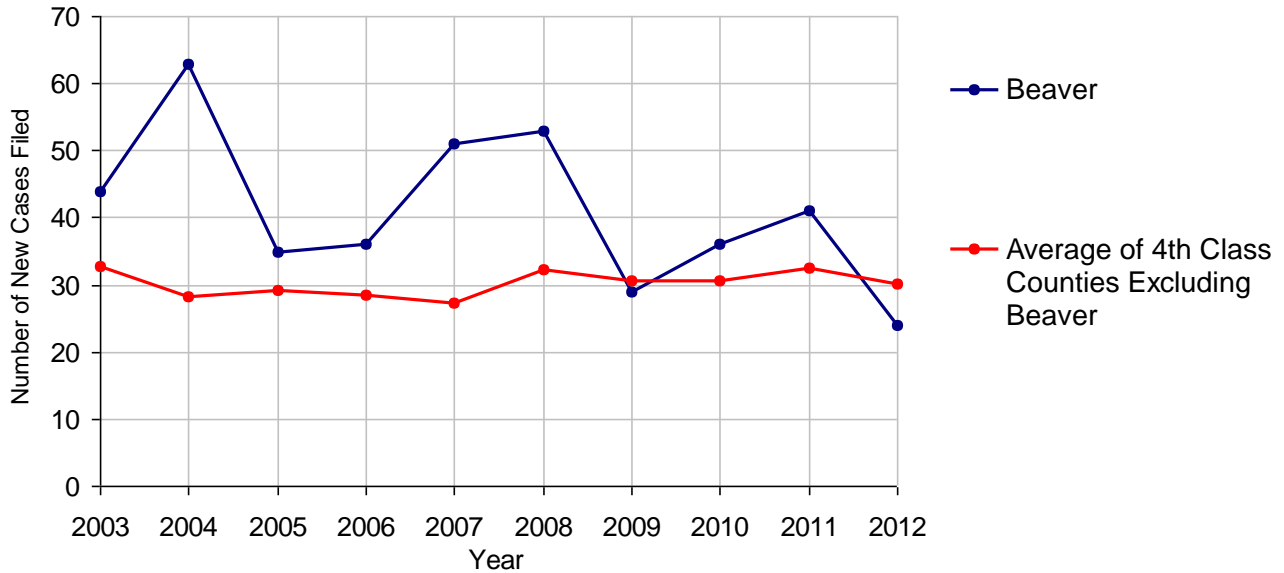
Beaver County

2012 Population Estimate: 170,245
 Class of County: 4th
 No. of Common Pleas Court Judgeships: 7



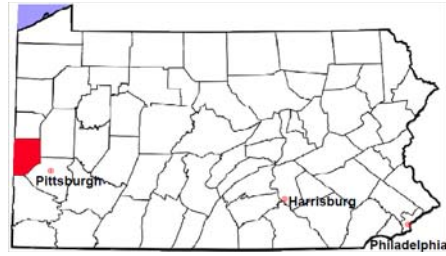
2012 Appointment of Guardians		No. of Cases
Cases Pending 1/1/2012		9
New Cases Filed in 2012		24
Cases Available for Processing		33
Processed By:		
Contested before a Judge	1	3.1%
Uncontested	29	90.6%
Other	2	6.3%
Cases Processed	32	100.0%
Cases Pending 12/31/2012		1

Appointment of Guardians New Cases Filed, 2003-2012



Beaver County

2012 Population Estimate: 170,245
 Class of County: 4th
 No. of Common Pleas Court Judgeships: 7



2012 Jury Yield and Utilization

Jury Yield

Qualification Questionnaires/Summonses Mailed:	4,227	A		
Returned Undeliverable:	12	B	0.3%	Of Qualification Questionnaires/Summonses Mailed
Not Responded to:	4	C	0.1%	
the Number of Prospective Jurors:				
Disqualified:	0	D		
Exempted:	0	E		
Excused:	634	F	15.0%	
Deferred to New Term:	490	G	11.6%	
Deferred from Previous Term:	472	H	11.2%	
Total Number of Qualified Jurors Available for Service:	3,559	I	84.2%	

$I = A - B - C - D - E - F - G + H$

Jury Utilization

the Number of Jurors:			
Reporting for Service:	2,547	71.6%	Of Jurors Qualified and Available
Told Not to Report for Service:	1,161	32.6%	
Sent to Courtroom for Jury Selection (Voir Dire):	3,267	128.3%	Of Jurors Reporting for Service
Impanelled or Sworn (jurors/alternates):	538	21.1%	
Removed for Cause/Hardship:	275		
Removed by Peremptory Challenge:	386		

Jury Costs

Total Annual Budget for Juror Operations:	\$137,844.00	J
Average Cost Per Juror:	\$32.61	K

$K = J/A$

In mid-2011, AOPC began utilizing the National Center for State Courts' Jury Managers' Toolbox for collecting jury data. In 2012, the counties began providing additional jury data which included information about the summoning practices in the counties. With this additional data, we can now see not only how many citizens come to our courthouses every day in anticipation of serving on a jury, but the number of citizens actually summonsed and the number of those summonsed who are exempt, excused or disqualified from service. With this wider view of the jury process, we can determine the efficiency with which our courts operate, and with the assistance of the Jury Managers' Toolbox find guidance in streamlining the jury summoning practices.