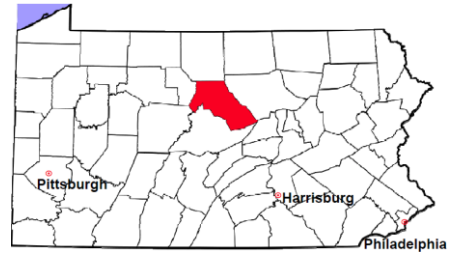


# Clinton County

2012 Population Estimate: 39,517  
 Class of County: 6th  
 No. of Common Pleas Court Judgeships: 2

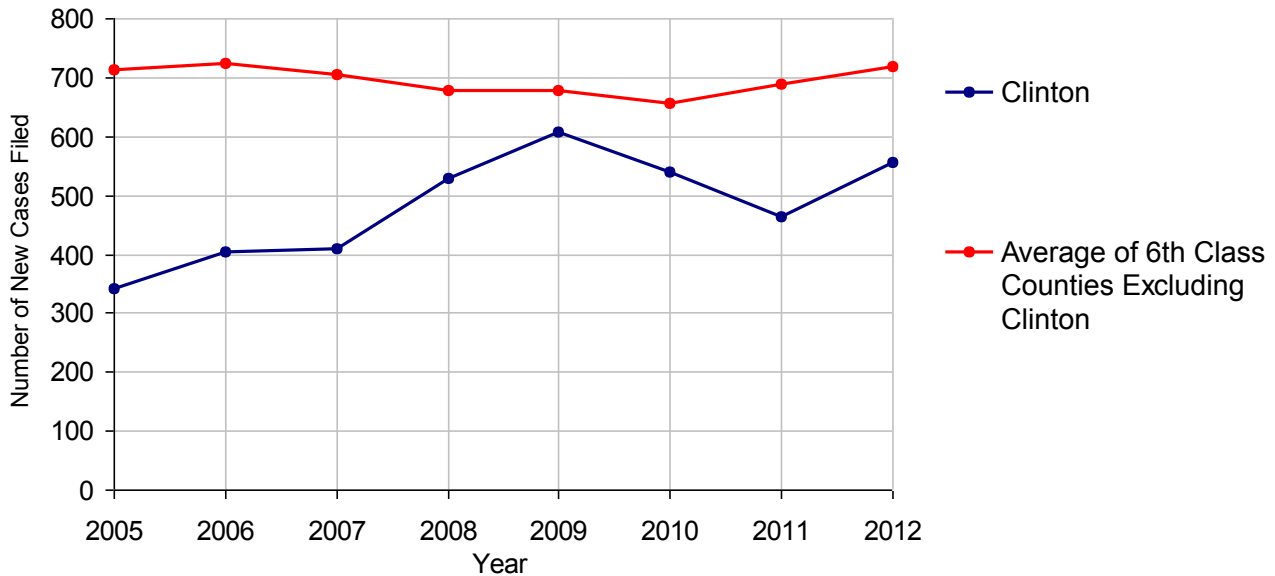


2012 Criminal	No. of Cases
Cases Pending 1/1/2012	111
New Cases Filed in 2012	556
Reopened Cases	23
<b>Cases Available for Disposition</b>	<b>690</b>
<b>Disposed by:</b>	
Withdrawn/Dismissed	35 6.5%
ARD	115 21.2%
Guilty Plea	307 56.6%
Non-Jury Trial	25 4.6%
Jury Trial	3 0.6%
Inactive	10 1.8%
Other	47 8.7%
<b>Total Cases Disposed</b>	<b>542 100.0%</b>
<b>Cases Pending 12/31/2012</b>	<b>148</b>
Cases Awaiting Sentencing	24

Age of Pending Cases as of 12/31/2012		
0-60 Days	70	47.3%
61-120 Days	51	34.5%
121-180 Days	12	8.1%
181-240 Days	3	2.0%
241-300 Days	2	1.4%
301-360 Days	0	
Over 360 Days	10	6.8%
<b>Total</b>	<b>148</b>	<b>100.0%</b>

Data provided by CPCMS

**Criminal New Cases Filed, 2005-2012**

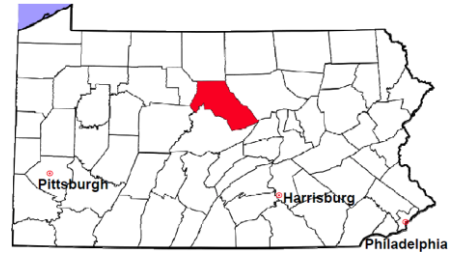


# Clinton County

2012 Population Estimate: 39,517

Class of County: 6th

No. of Common Pleas Court Judgeships: 2



## 2012 Criminal - New Cases by Case Type



Case Type	Felony	Misdemeanor	Summary /Ungraded	Total
Person	24	41	0	65
Property	49	84	2	135
Drug	13	62	0	75
Weapon	5	0	0	5
Public Order	6	66	3	75
Motor Vehicle - DWI/DUI	0	199	0	199
Motor Vehicle - Other	0	2	0	2
Other	0	0	0	0
<b>Total</b>	<b>97</b>	<b>454</b>	<b>5</b>	<b>556</b>
	<b>17.4%</b>	<b>81.7%</b>	<b>0.9%</b>	<b>100.0%</b>

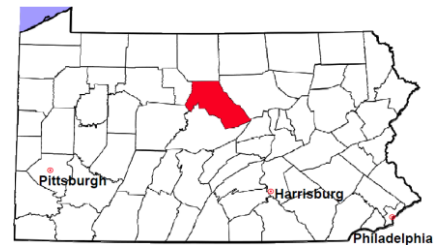
Data provided by CPCMS

# Clinton County

2012 Population Estimate: 39,517

Class of County: 6th

No. of Common Pleas Court Judgeships: 2



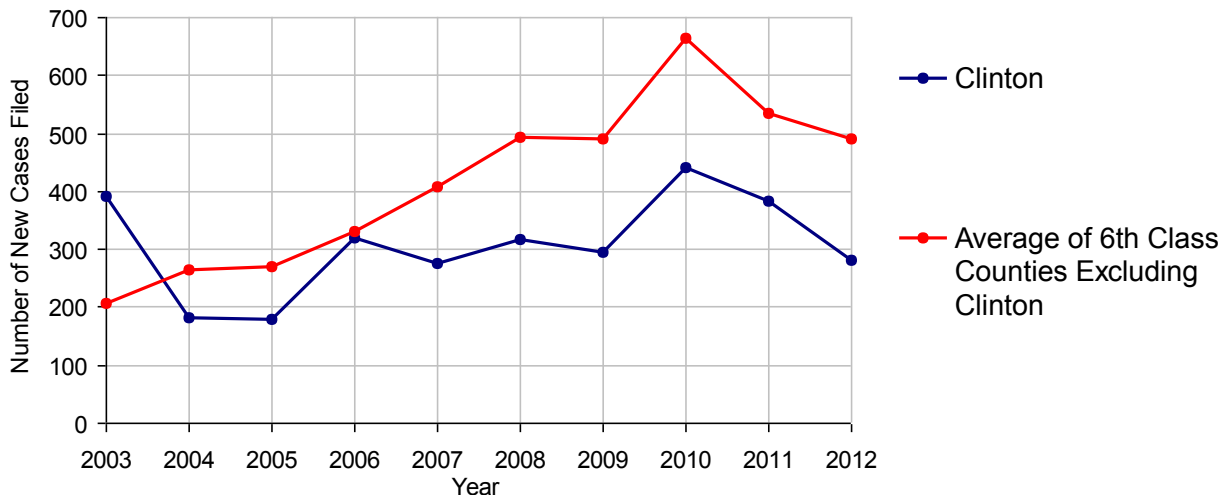
<b>2012 Civil</b>	<b>Civil Action</b>	<b>Other</b>	<b>Total</b>
Cases Pending 1/1/2012	333	303	636 (R)
Docketed Cases	144	138	282
Arbitration Appeals	0	1	1
Transferred In	0	0	0
Returned to Active	0	0	0
<b>Cases Available for Processing</b>	<b>477</b>	<b>442</b>	<b>919</b>
Disposed By:			
Default Judgments	0	1	1
Cases Decided by Arbitration Board	0	0	0
Dispositive Motions	0	0	0
Settlements	24	22	46
Moved to Inactive Status	0	0	0
Transferred/Withdrawn	1	2	3
Administrative Purge	0	0	0
Other	41	25	66
Jury Trial	1	0	1
Non-Jury Trial	10	4	14
<b>Total Cases Disposed</b>	<b>77</b>	<b>54</b>	<b>131</b>
<b>Cases Pending 12/31/2012</b>	<b>400</b>	<b>388</b>	<b>788</b>

### Age of Pending Cases as of 12/31/2012 (Civil Action Only)

0-6 months	69	17.3%
7-12 months	54	13.5%
13-18 months	85	21.3%
19-24 months	82	20.5%
25-30 months	108	27.0%
31-36 months	1	0.3%
37-42 months	1	0.3%
43-48 months	0	
49-54 months	0	
55-60 months	0	
61-66 months	0	
67-72 months	0	
Over 72 months	0	
<b>Total</b>	<b>400</b>	<b>100.0%</b>

(R) - Revised

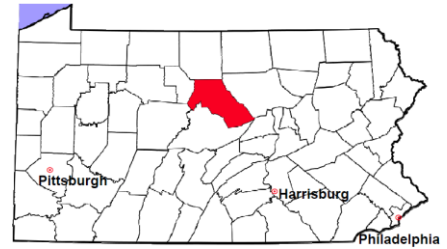
Docketed Cases, 2003-2012



Note: Prior to June 2010, docketed cases under the "Other" category were not reported. The inclusion of these cases starting from June 2010 may contribute to an increase in docketed cases from 2009 to 2010.

# Clinton County

2012 Population Estimate: 39,517  
 Class of County: 6th  
 No. of Common Pleas Court Judgeships: 2



## 2012 Civil - Docketed Cases Listed by Case Type

<b>TORT</b>	<b>29</b>	<b>10.3%</b>
<i>(does not include mass tort)</i>		
Intentional	3	
Malicious Prosecution	0	
Motor Vehicle	12	
Nuisance	0	
Premise Liability	4	
Product Liability	1	
Slander/Libel/Defamation	1	
Other	8	
<b>MASS TORT</b>	<b>0</b>	
Asbestos	0	
Tobacco	0	
Toxic Tort - DES	0	
Toxic Tort - Implant	0	
Toxic Waste	0	
Other	0	
<b>PROFESSIONAL LIABILITY</b>	<b>0</b>	
Dental	0	
Legal	0	
Medical Malpractice	0	
Other	0	
<b>CONTRACT</b>	<b>111</b>	<b>39.4%</b>
<i>(does not include judgments)</i>		
Buyer Plaintiff	0	
Debt Collection: Credit Card	61	
Debt Collection: Other	35	
Employment Dispute:		
Employment Dispute: Discriminatio	0	
Employment Dispute: Other	0	
Other	15	

<b>REAL PROPERTY</b>	<b>87</b>	<b>30.9%</b>
Ejectment*	7	
Eminent Domain/Condemnation	14	
Ground Rent	0	
Landlord/Tenant Dispute	4	
Mortgage Foreclosure:		
Residential*	44	
Commercial*	6	
Partition of Real Property*	2	
Quiet Title*	2	
Other*	8	
<b>CIVIL APPEALS</b>	<b>18</b>	<b>6.4%</b>
<i>- Administrative Agencies</i>		
Board of Assessment*	0	
Board of Elections*	0	
Dept. of Transportation*	9	
Zoning Board*	2	
Statutory Appeal - Other*	3	
Other*	4	
<b>MISCELLANEOUS</b>	<b>37</b>	<b>13.1%</b>
Common Law/		
Statutory Arbitration*	0	
Declaratory Judgment*	2	
Mandamus*	5	
Non-Domestic Relations		
Restraining Order*	0	
Quo Warranto*	0	
Replevin*	3	
Other*	27	
<b>TOTAL DOCKETED CASES:</b>	<b>282</b>	<b>100%</b>

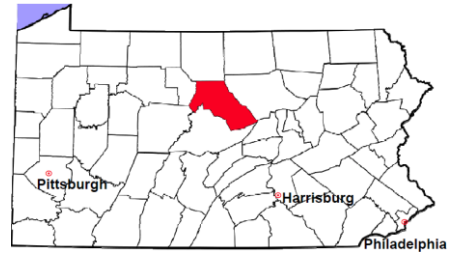
### Of the Docketed Cases:

Pro Se Filings: 1 0.4%      Class Action Suits: 0      MDJ Appeals: 5 1.8%

\* Civil Other

# Clinton County

2012 Population Estimate: 39,517  
 Class of County: 6th  
 No. of Common Pleas Court Judgeships: 2



## 2012 Protection From Abuse

**No. of  
Petitions**

Cases Pending 1/1/2012	6
New Cases Filed in 2012	87
<i>Of these, Petitions Requesting Temporary Orders: 87 (100.0%)</i>	
<i>Temporary Orders DENIED: 11 (12.6%), Temporary Orders GRANTED: 76 (87.4%)</i>	

### Cases Available for Processing 93

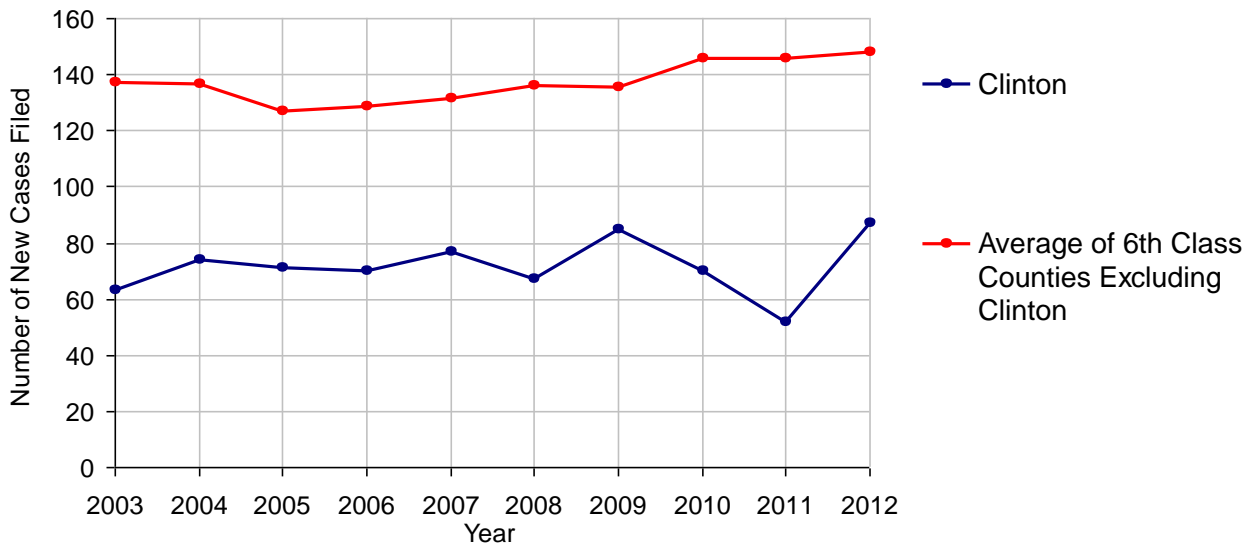
Processed By:

Temporary Order DENIED After Ex Parte Hearing and No Evidentiary Hearing Scheduled	0	
Temporary Order DISMISSED After Evidentiary Hearing and No Final Order Entered	26	33.8%
Final Order DENIED After Evidentiary Hearing Before a Judge	3	3.9%
Final Order GRANTED After Evidentiary Hearing Before a Judge	42	54.5%
Plaintiff Did Not Appear For Evidentiary Hearing	1	1.3%
Final Order by STIPULATION OR AGREEMENT Between the Parties	0	
Petition WITHDRAWN by Plaintiff	5	6.5%
TRANSFERRED to Another Jurisdiction	0	
DECEASED Party	0	
Other	0	

### Cases Processed 77 100.0%

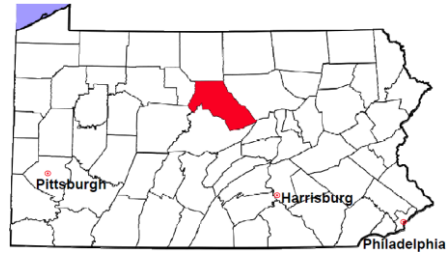
### Cases Pending 12/31/2012 16

**PFA New Cases Filed, 2003-2012**



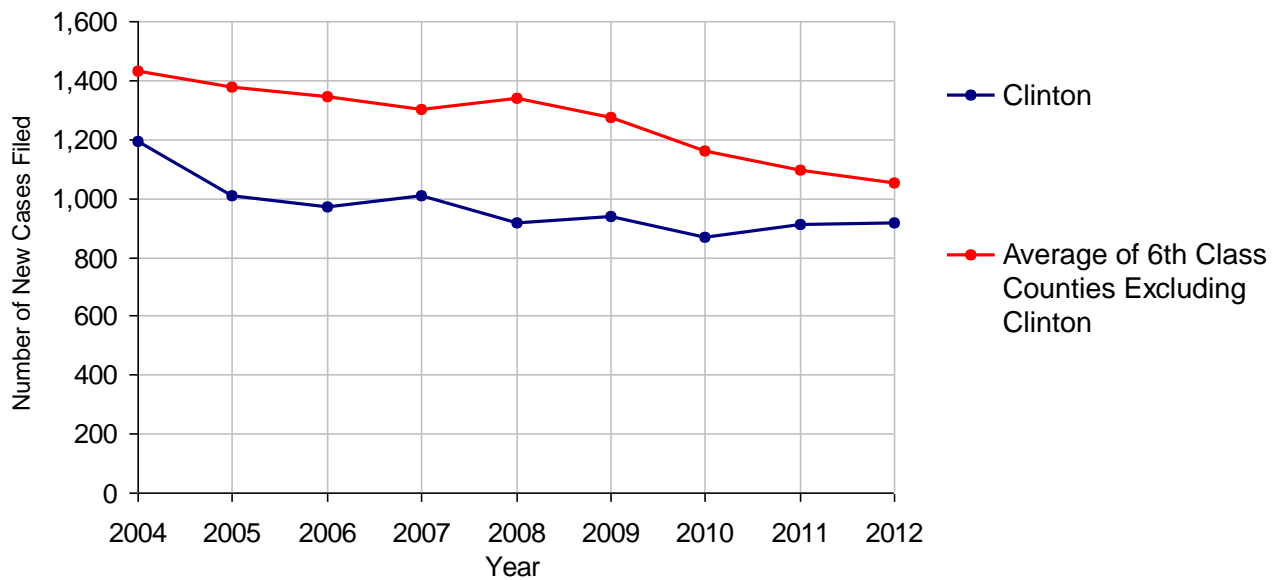
# Clinton County

2012 Population Estimate: 39,517  
 Class of County: 6th  
 No. of Common Pleas Court Judgeships: 2



<b>2012 Spousal &amp; Child Support</b>	<b>No. of Petitions</b>	
Cases Pending 1/1/2012	56	
New Cases Filed in 2012	916	
Dockets Transferred In (+)	17	
Dockets Transferred Out (-)	8	
<b>Cases Available for Processing</b>	<b>981</b>	
Processed By:		
Judge	81	8.8%
Intake Officer	844	91.2%
Hearing Officer	0	
Other	0	
<b>Cases Processed</b>	<b>925</b>	<b>100.0%</b>
<b>Cases Pending 12/31/2012</b>	<b>56</b>	

**Spousal & Child Support New Cases Filed, 2004-2012**

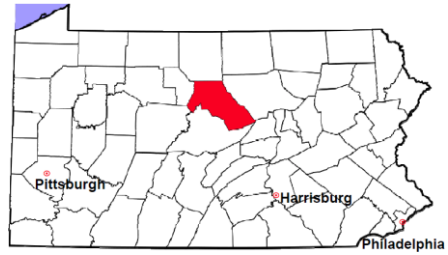


# Clinton County

2012 Population Estimate: 39,517

Class of County: 6th

No. of Common Pleas Court Judgeships: 2



## 2012 Custody/Partial Custody/Visitation

No. of Petitions

Cases Pending 1/1/2012

197

New Cases Filed in 2012

117

**Cases Available for Processing**

**314**

Processed By:

Judge

4

100.0%

Non-Judicial Officer

0

Other

0

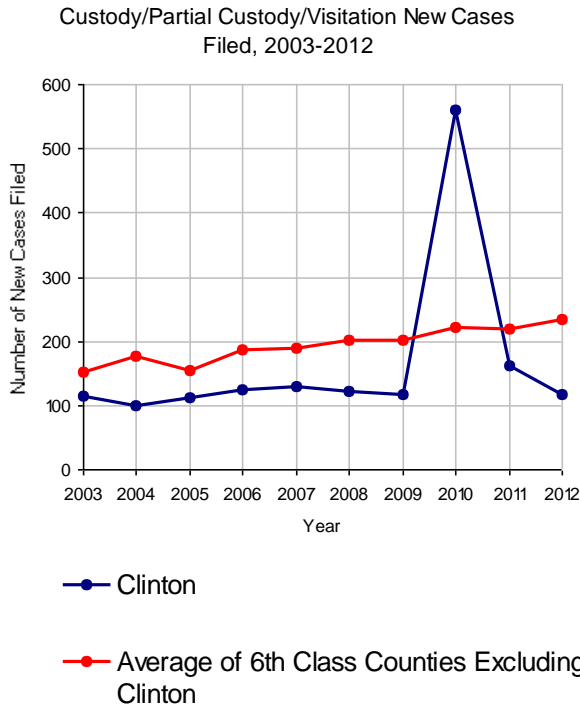
**Cases Processed**

**4**

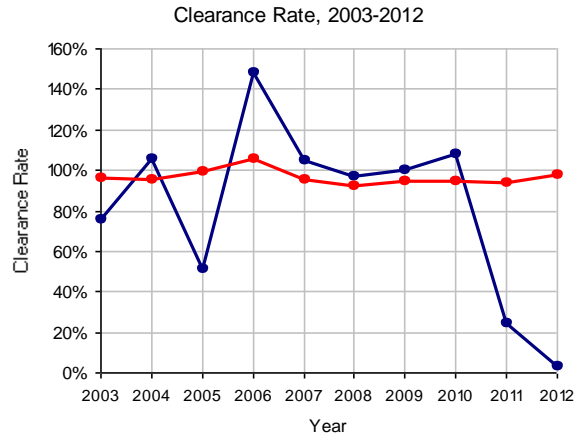
**100.0%**

**Cases Pending 12/31/2012**

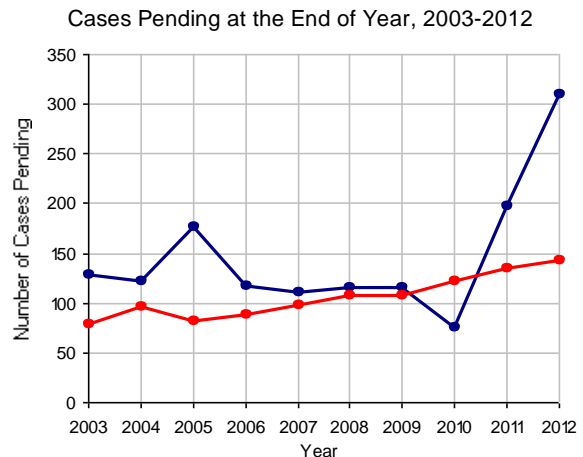
**310**



Note: The increase in filings for 2010 is due to cases returned to active status.

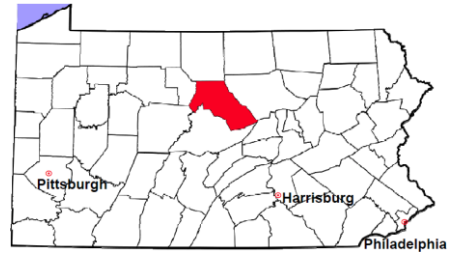


Note: Clearance Rate = Cases Processed / New Cases Filed



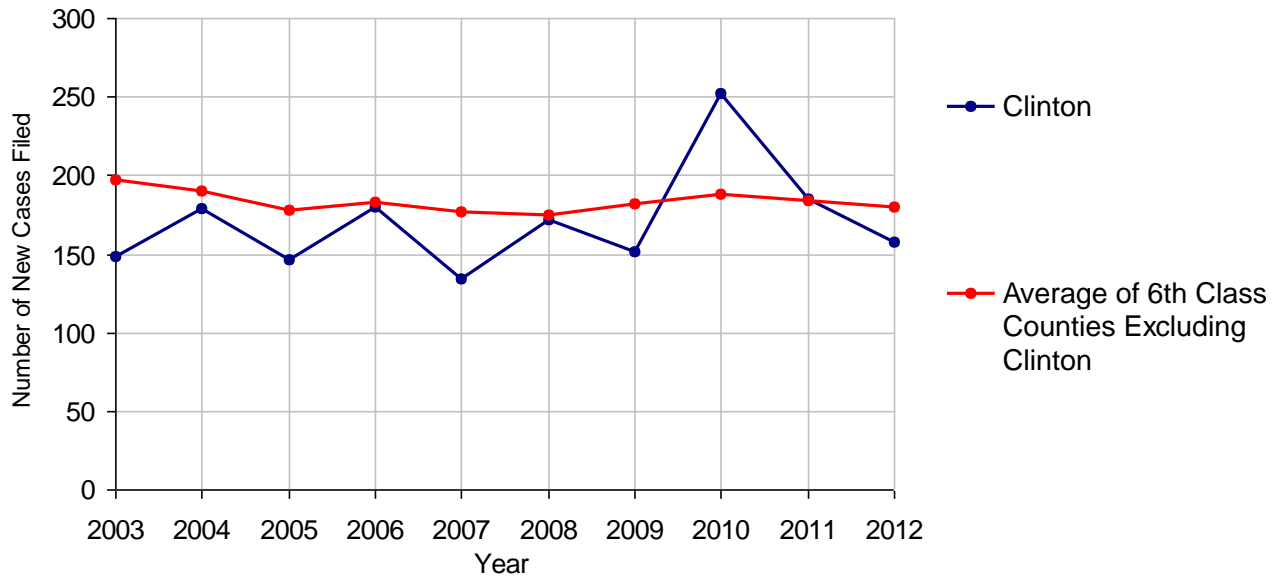
# Clinton County

2012 Population Estimate: 39,517  
 Class of County: 6th  
 No. of Common Pleas Court Judgeships: 2



<b>2012 Divorce</b>	<b>No. of Petitions</b>	
Cases Pending 1/1/2012	198	
New Cases Filed in 2012	158	
<b>Cases Available for Processing</b>	<b>356</b>	
Processed By:		
Contested Before a Judge	98	76.0%
Contested Before a Master	0	
Uncontested	31	24.0%
Other	0	
<b>Cases Processed</b>	<b>129</b>	<b>100.0%</b>
<b>Cases Pending 12/31/2012</b>	<b>227</b>	

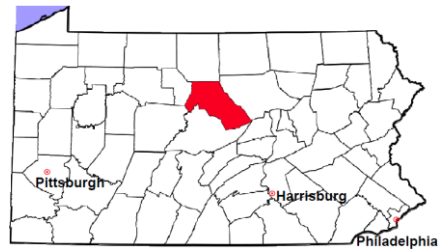
**Divorce New Cases Filed, 2003-2012**





# Clinton County

2012 Population Estimate: 39,517  
 Class of County: 6th  
 No. of Common Pleas Court Judgeships: 2



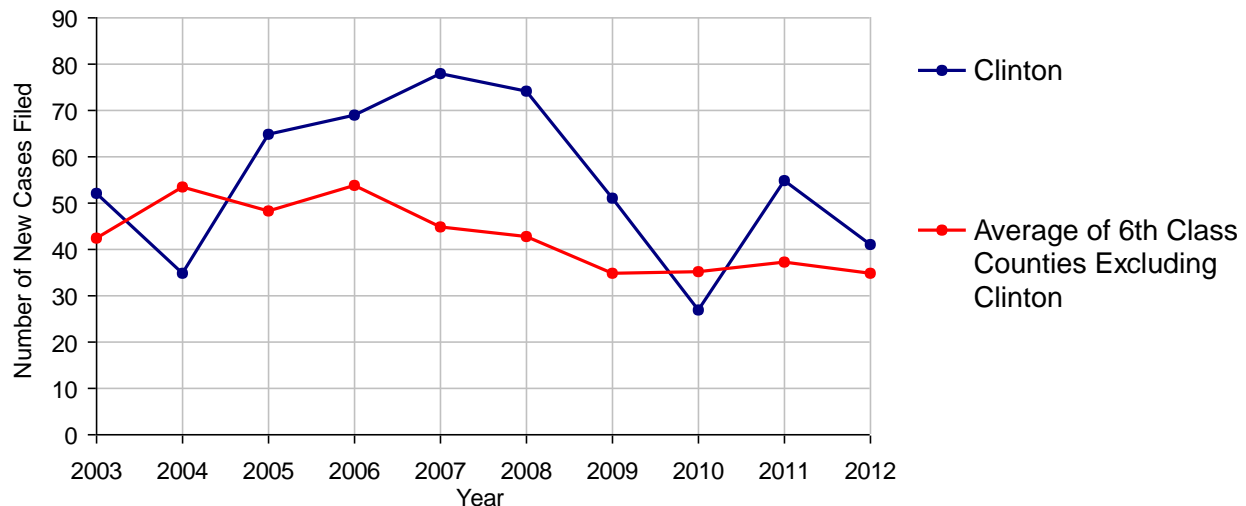
## 2012 Juvenile Dependency - Active Dependent Inventory



	Abuse/ Neglect	Status Offenses	Total
Cases Pending 1/1/2012	7	0	7
New Petitions Filed in 2012	31	10	41
Other	0	0	0
<b>Total Petitions Available for Processing</b>	<b>38</b>	<b>10</b>	<b>48</b>
Processed by:			
Adjudicated Dependent			
Judge	23	7	30
Master	0	0	0
Adjudicated NOT Dependent			
Judge	10	3	13
Master	0	0	0
Withdrawn/Dismissed/Inactive	0	0	0
Other	0	0	0
<b>Total Petitions Processed</b>	<b>33</b>	<b>10</b>	<b>43</b>
<b>Cases Pending 12/31/2012</b>	<b>5</b>	<b>0</b>	<b>5</b>

Data provided by CPCMS

Abuse/Neglect and Status Offenses New Cases Filed, 2003-2012



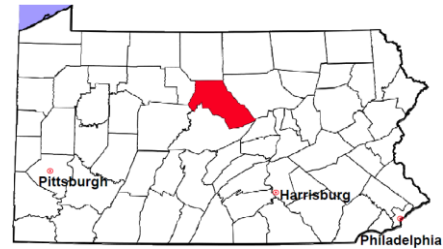
Note: Dependency data for 2002-2010 were collected manually. Dependency data for 2011 and 2012 were provided by CPCMS.

# Clinton County

2012 Population Estimate: 39,517

Class of County: 6th

No. of Common Pleas Court Judgeships: 2



## 2012 Juvenile Dependency - Adjudicated Dependent Inventory



	Abuse/ Neglect	Status Offenses	Total
Cases Pending 1/1/2012	57	6	63
New Adjudicated Dependent Cases	23	7	30
Other	0	0	0
<b>Total Adjudicated Dependent Cases</b>	<b>80</b>	<b>13</b>	<b>93</b>
<b><u>Court Supervision Terminated:</u></b>			
Family Reunification	4 9.1%	1 25.0%	5 10.4%
Adoption	9 20.5%	0	9 18.8%
Placement with a Relative/Guardian	21 47.7%	2 50.0%	23 47.9%
Aged Out	3 6.8%	0	3 6.3%
Other Permanency Outcomes*	4 9.1%	1 25.0%	5 10.4%
Other**	3 6.8%	0	3 6.3%
<b>Total Adjudicated Dependent Cases Terminated</b>	<b>44 100.0%</b>	<b>4 100.0%</b>	<b>48 100.0%</b>
<b>Cases Pending 12/31/2012</b>	<b>36</b>	<b>9</b>	<b>45</b>

Data provided by CPCMS

\* Other Permanency Outcomes include: adjudicated delinquent, death due to natural causes, death due to negligence, emancipation, permanent living arrangement, and parent has come forward.

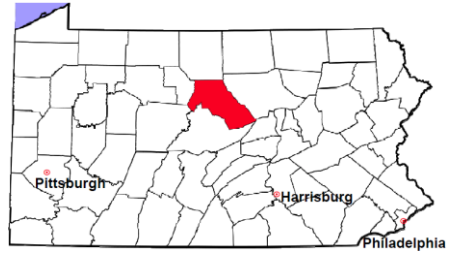
\*\* Other includes cases where court supervision is terminated due to transfer out of jurisdiction, withdrawal and administrative closure.

# Clinton County

2012 Population Estimate: 39,517

Class of County: 6th

No. of Common Pleas Court Judgeships: 2



## 2012 Juvenile Delinquency

**No. of Cases**

Cases Pending 1/1/2012 22

New Cases Filed in 2012 104

**Cases Available for Processing 126**

Processed By:

Judge 86 100.0%

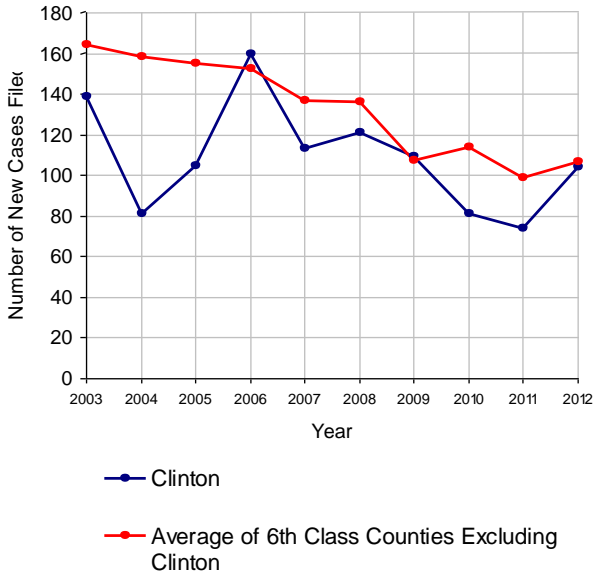
Non-Judicial Officer 0

Other 0

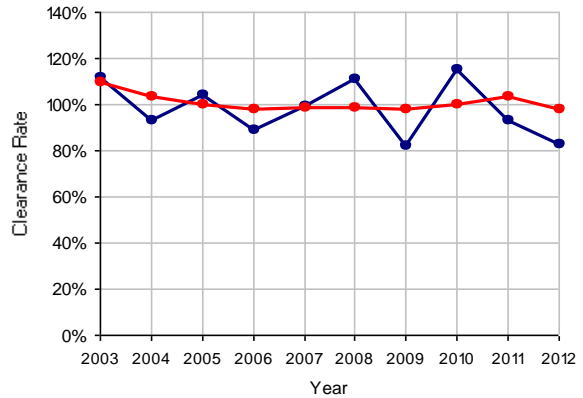
**Cases Processed 86 100.0%**

**Cases Pending 12/31/2012 40**

Juvenile Delinquency New Cases Filed, 2003-2012

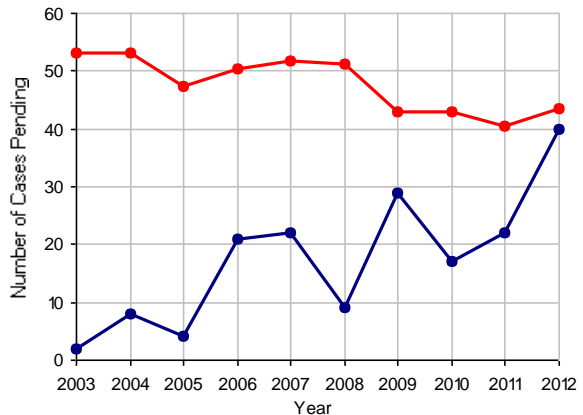


Clearance Rate, 2003-2012



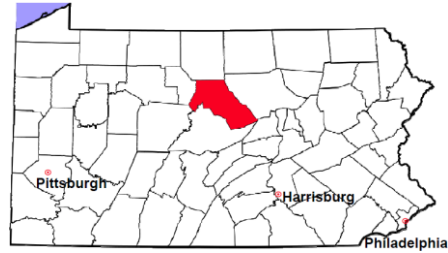
Note: Clearance Rate = Cases Processed / New Cases Filed

Cases Pending at the End of Year, 2003-2012



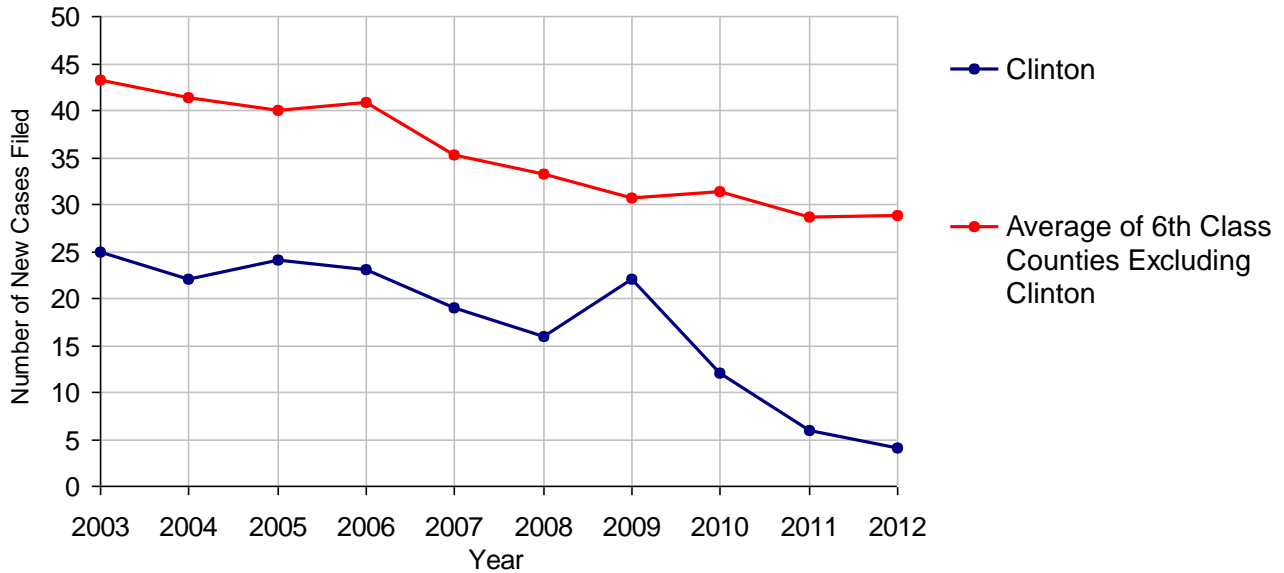
# Clinton County

2012 Population Estimate: 39,517  
 Class of County: 6th  
 No. of Common Pleas Court Judgeships: 2



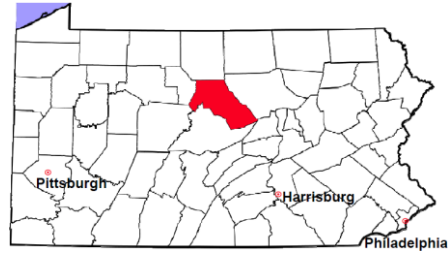
<b>2012 Accounts</b>	<b>No. of Cases</b>
Cases Pending 1/1/2012	2
New Cases Filed in 2012	4
<b>Cases Available for Processing</b>	<b>6</b>
Processed By:	
Contested before a Judge	0
Contested before a Non-judicial Officer	0
Uncontested	5    100.0%
Other	0
<b>Cases Processed</b>	<b>5    100.0%</b>
<b>Cases Pending 12/31/2012</b>	<b>1</b>

**Accounts New Cases Filed, 2003-2012**



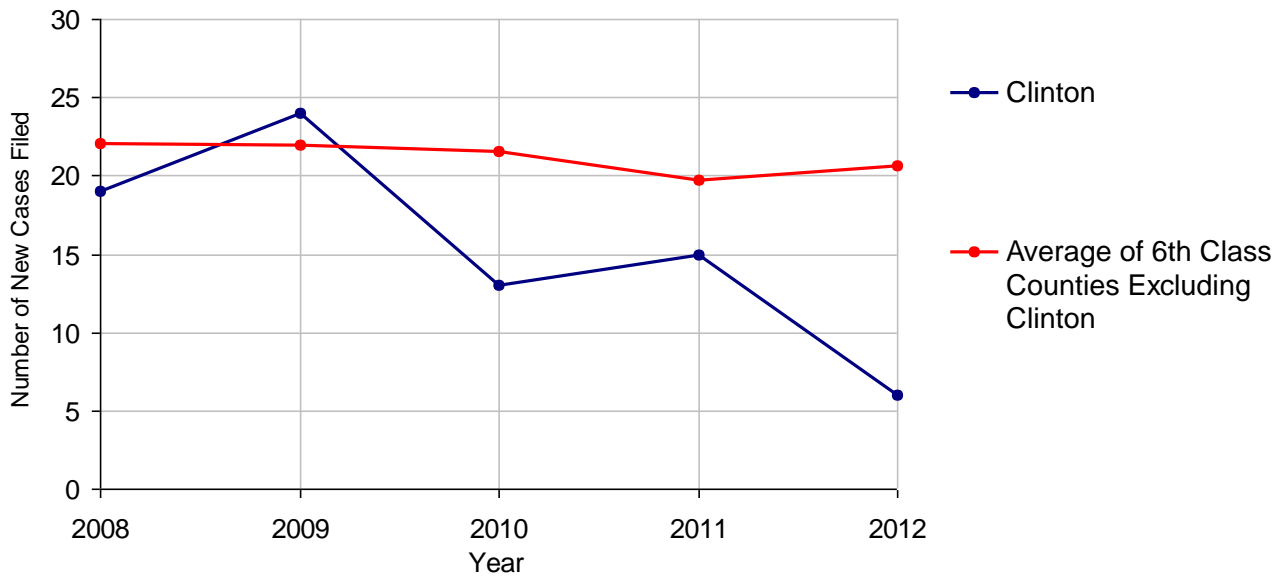
# Clinton County

2012 Population Estimate: 39,517  
 Class of County: 6th  
 No. of Common Pleas Court Judgeships: 2



<b>2012 Adoptions</b>		<b>No. of Cases</b>	
Cases Pending 1/1/2012		14	
New Cases Filed in 2012		6	
<b>Cases Available for Processing</b>		<b>20</b>	
Processed By:			
Contested before a Judge	Granted	8	66.7%
	Denied	0	
Uncontested	Granted	4	33.3%
	Denied	0	
Other		0	
<b>Cases Processed</b>		<b>12</b>	<b>100.0%</b>
<b>Cases Pending 12/31/2012</b>		<b>8</b>	

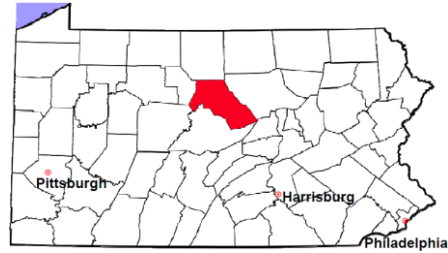
**Adoptions New Cases Filed, 2008-2012**



Note: Prior to 2008, each petition was counted as one new case, regardless of the number of children listed on the petition. Starting in 2008, each child listed on a petition is counted as a separate case. Therefore, statistics since 2008 should not be compared to statistics prior to 2008.

# Clinton County

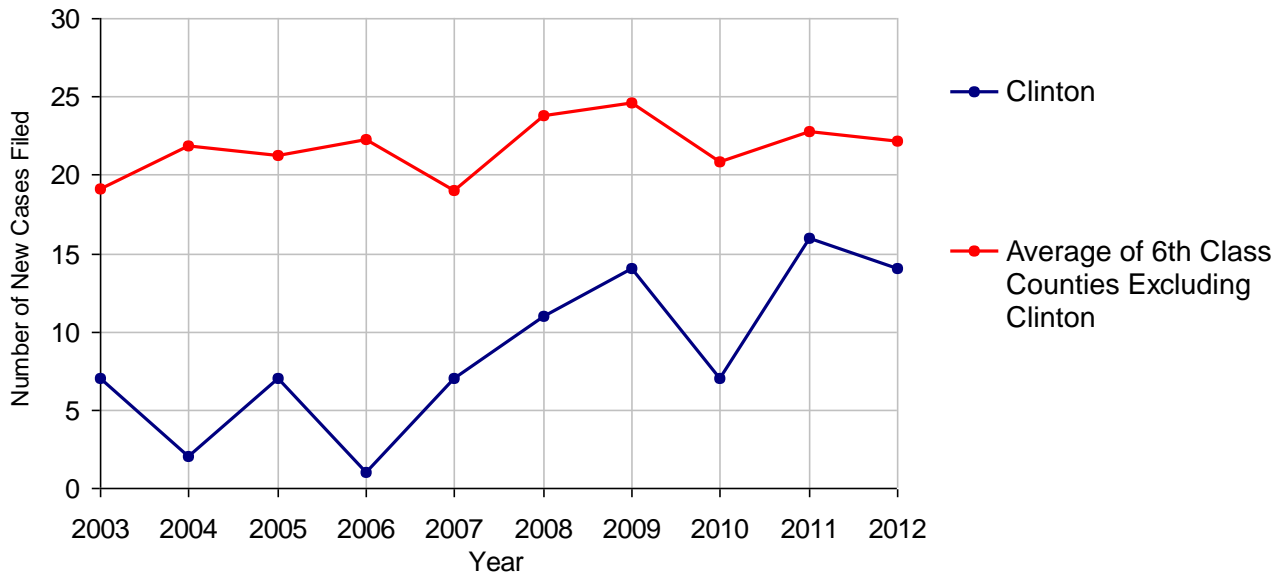
2012 Population Estimate: 39,517  
 Class of County: 6th  
 No. of Common Pleas Court Judgeships: 2



## 2012 Relinquishments/Terminations

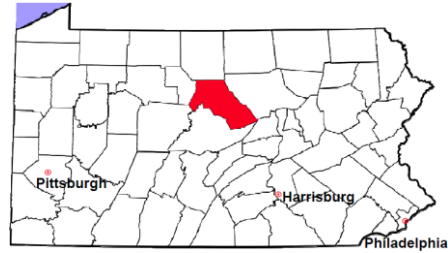
	No. of Cases	
Cases Pending 1/1/2012	5	
New Cases Filed in 2012	14	
<b>Cases Available for Processing</b>	<b>19</b>	
Processed By:		
Contested before a Judge	4	33.3%
Uncontested	5	41.7%
Other	3	25.0%
<b>Cases Processed</b>	<b>12</b>	<b>100.0%</b>
<b>Cases Pending 12/31/2012</b>	<b>7</b>	

Relinquishments/Terminations New Cases Filed, 2003-2012



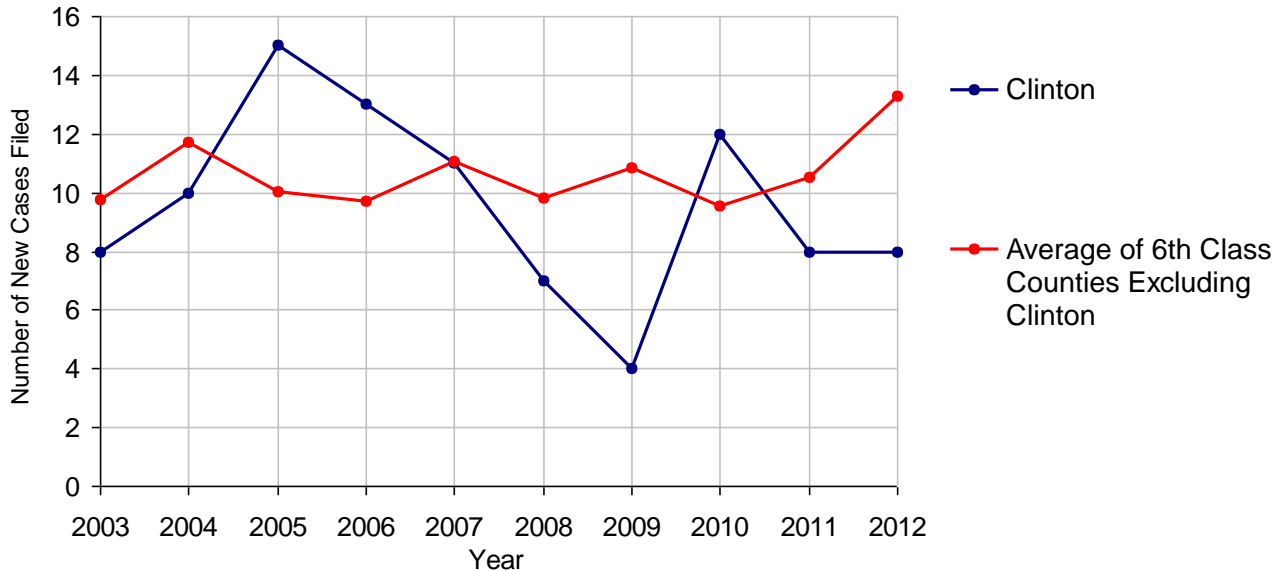
# Clinton County

2012 Population Estimate: 39,517  
 Class of County: 6th  
 No. of Common Pleas Court Judgeships: 2



<b>2012 Appointment of Guardians</b>		<b>No. of Cases</b>
Cases Pending 1/1/2012		4
New Cases Filed in 2012		8
<b>Cases Available for Processing</b>		<b>12</b>
Processed By:		
Contested before a Judge	3	60.0%
Uncontested	2	40.0%
Other	0	
<b>Cases Processed</b>	<b>5</b>	<b>100.0%</b>
<b>Cases Pending 12/31/2012</b>		<b>7</b>

**Appointment of Guardians New Cases Filed, 2003-2012**



# Clinton County

2012 Population Estimate: 39,517  
 Class of County: 6th  
 No. of Common Pleas Court Judgeships: 2



## 2012 Jury Yield and Utilization

### Jury Yield

Qualification Questionnaires/Summonses Mailed:	710	A		
Returned Undeliverable:	15	B	2.1%	Of Qualification Questionnaires/ Summonses Mailed
Not Responded to:	16	C	2.3%	
the Number of Prospective Jurors:				
Disqualified:	0	D		
Exempted:	0	E		
Excused:	249	F	35.1%	
Deferred to New Term:	8	G	1.1%	
Deferred from Previous Term:	10	H	1.4%	
<b>Total Number of Qualified Jurors Available for Service:</b>	<b>432</b>	<b>I</b>	<b>60.8%</b>	

$I = A - B - C - D - E - F - G + H$

### Jury Utilization

the Number of Jurors:			
Reporting for Service:	386	89.4%	Of Jurors Qualified and Available
Told Not to Report for Service:	0		
Sent to Courtroom for Jury Selection (Voir Dire):	405	104.9%	Of Jurors Reporting for Service
Impanelled or Sworn (jurors/alternates):	300	77.7%	
Removed for Cause/Hardship:	128		
Removed by Peremptory Challenge:	137		

### Jury Costs

Total Annual Budget for Juror Operations:	\$72,138.00	J
Average Cost Per Juror:	\$101.60	K

$K = J/A$

In mid-2011, AOPC began utilizing the National Center for State Courts' Jury Managers' Toolbox for collecting jury data. In 2012, the counties began providing additional jury data which included information about the summoning practices in the counties. With this additional data, we can now see not only how many citizens come to our courthouses every day in anticipation of serving on a jury, but the number of citizens actually summonsed and the number of those summonsed who are exempt, excused or disqualified from service. With this wider view of the jury process, we can determine the efficiency with which our courts operate, and with the assistance of the Jury Managers' Toolbox find guidance in streamlining the jury summonsing practices.