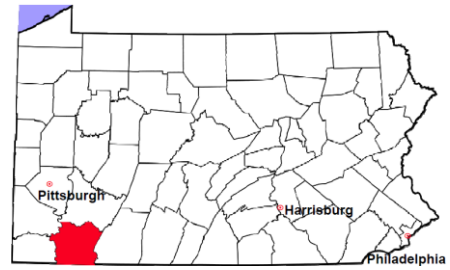


# Fayette County

2012 Population Estimate: 135,660  
 Class of County: 4th  
 No. of Common Pleas Court Judgeships: 5



2012 Criminal	No. of Cases
---------------	--------------

Cases Pending 1/1/2012	1,478
New Cases Filed in 2012	2,318
Reopened Cases	168
<b>Cases Available for Disposition</b>	<b>3,964</b>

**Disposed by:**

Withdrawn/Dismissed	150	6.0%
ARD	506	20.3%
Guilty Plea	1,616	65.0%
Non-Jury Trial	9	0.4%
Jury Trial	89	3.6%
Inactive	70	2.8%
Other	47	1.9%
<b>Total Cases Disposed</b>	<b>2,487</b>	<b>100.0%</b>

**Cases Pending 12/31/2012**                      **1,477**

Cases Awaiting Sentencing                      152

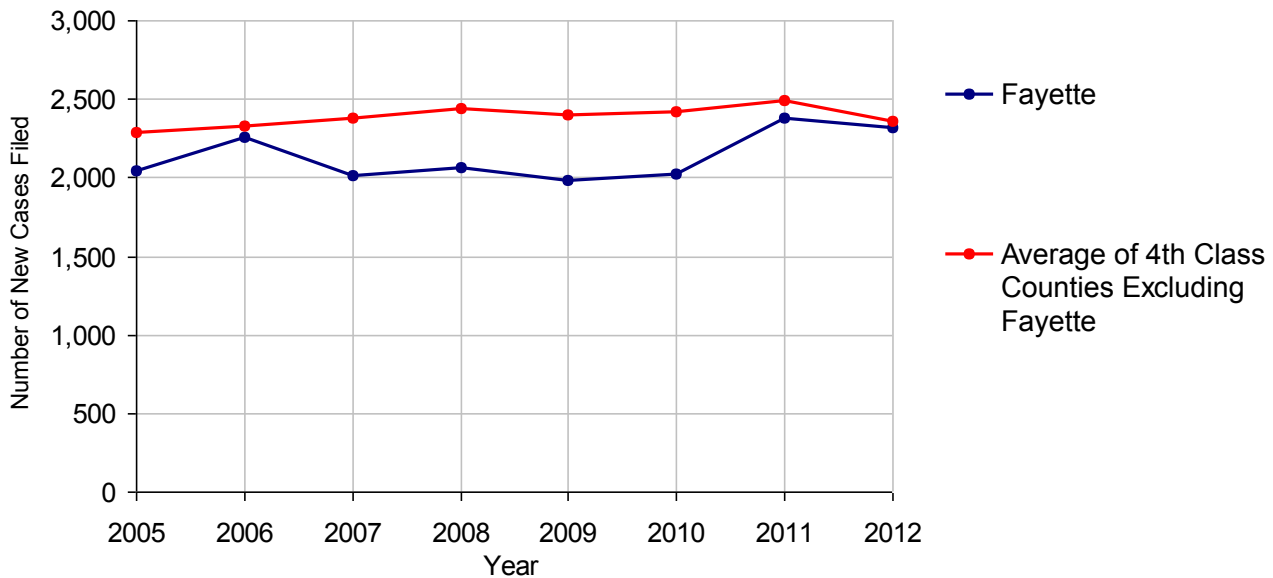
Data provided by CPCMS



**Age of Pending Cases  
as of 12/31/2012**

0-60 Days	355	24.0%
61-120 Days	323	21.9%
121-180 Days	265	17.9%
181-240 Days	151	10.2%
241-300 Days	154	10.4%
301-360 Days	71	4.8%
Over 360 Days	158	10.7%
<b>Total</b>	<b>1,477</b>	<b>100.0%</b>

**Criminal New Cases Filed, 2005-2012**

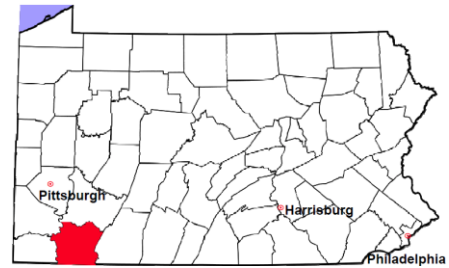


# Fayette County

2012 Population Estimate: 135,660

Class of County: 4th

No. of Common Pleas Court Judgeships: 5



## 2012 Criminal - New Cases by Case Type

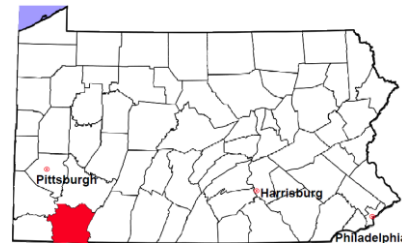


Case Type	Felony	Misdemeanor	Summary /Ungraded	Total
Person	137	159	1	297
Property	340	284	0	624
Drug	160	257	0	417
Weapon	28	11	0	39
Public Order	49	121	2	172
Motor Vehicle - DWI/DUI	0	758	0	758
Motor Vehicle - Other	1	10	0	11
Other	0	0	0	0
<b>Total</b>	<b>715</b>	<b>1,600</b>	<b>3</b>	<b>2,318</b>
	<b>30.8%</b>	<b>69.0%</b>	<b>0.1%</b>	<b>100.0%</b>

Data provided by CPCMS

# Fayette County

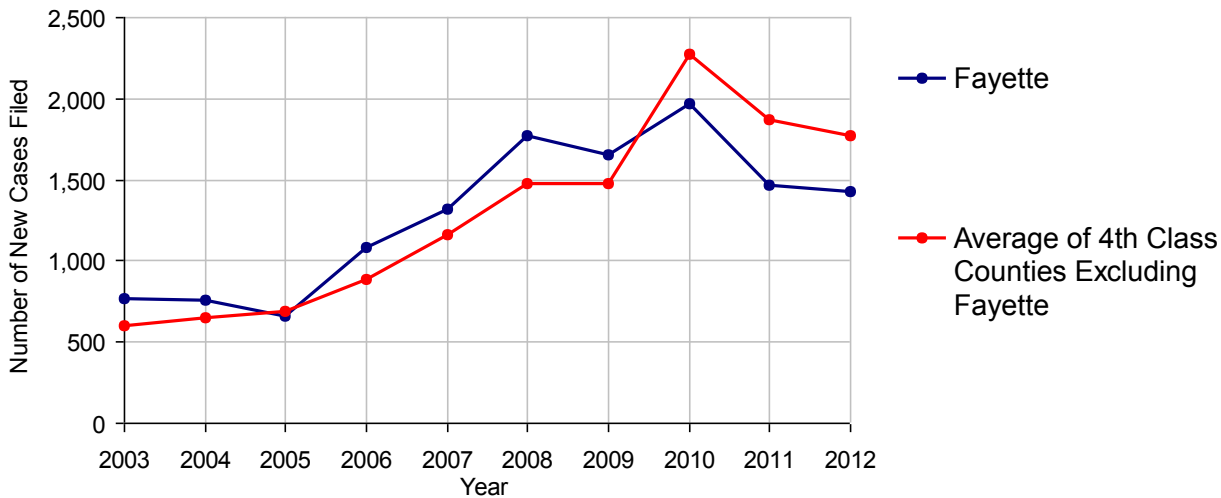
2012 Population Estimate: 135,660  
 Class of County: 4th  
 No. of Common Pleas Court Judgeships: 5



2012 Civil	Civil Action	Other	Total
Cases Pending 1/1/2012	1,917	1,237	3,154
Docketed Cases	941	491	1,432
Arbitration Appeals	13	5	18
Transferred In	0	0	0
Returned to Active	6	4	10
<b>Cases Available for Processing</b>	<b>2,877</b>	<b>1,737</b>	<b>4,614</b>
Disposed By:			
Default Judgments	366	234	600
Cases Decided by Arbitration Board	47	9	56
Dispositive Motions	37	115	152
Settlements	526	228	754
Moved to Inactive Status	4	248	252
Transferred/Withdrawn	26	11	37
Administrative Purge	413	166	579
Other	85	36	121
Jury Trial	1	0	1
Non-Jury Trial	8	11	19
<b>Total Cases Disposed</b>	<b>1,513</b>	<b>1,058</b>	<b>2,571</b>
<b>Cases Pending 12/31/2012</b>	<b>1,364</b>	<b>679</b>	<b>2,043</b>

Age of Pending Cases as of 12/31/2012 (Civil Action Only)		
0-6 months	342	25.1%
7-12 months	229	16.8%
13-18 months	172	12.6%
19-24 months	167	12.2%
25-30 months	131	9.6%
31-36 months	61	4.5%
37-42 months	60	4.4%
43-48 months	48	3.5%
49-54 months	41	3.0%
55-60 months	20	1.5%
61-66 months	15	1.1%
67-72 months	20	1.5%
Over 72 months	58	4.3%
<b>Total</b>	<b>1,364</b>	<b>100.0%</b>

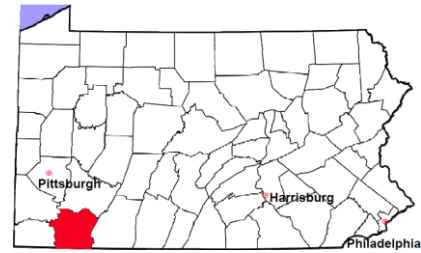
Docketed Cases, 2003-2012



Note: Prior to June 2010, docketed cases under the "Other" category were not reported. The inclusion of these cases starting from June 2010 may contribute to an increase in docketed cases from 2009 to 2010.

# Fayette County

2012 Population Estimate: 135,660  
 Class of County: 4th  
 No. of Common Pleas Court Judgeships: 5



## 2012 Civil - Docketed Cases Listed by Case Type

<b>TORT</b>	<b>221</b>	<b>15.4%</b>
<i>(does not include mass tort)</i>		
Intentional	11	
Malicious Prosecution	2	
Motor Vehicle	128	
Nuisance	2	
Premise Liability	25	
Product Liability	3	
Slander/Libel/Defamation	2	
Other	48	
<b>MASS TORT</b>	<b>1</b>	<b>0.1%</b>
Asbestos	1	
Tobacco	0	
Toxic Tort - DES	0	
Toxic Tort - Implant	0	
Toxic Waste	0	
Other	0	
<b>PROFESSIONAL LIABILITY</b>	<b>27</b>	<b>1.9%</b>
Dental	0	
Legal	10	
Medical Malpractice	14	
Other	3	
<b>CONTRACT</b>	<b>604</b>	<b>42.2%</b>
<i>(does not include judgments)</i>		
Buyer Plaintiff	12	
Debt Collection: Credit Card	312	
Debt Collection: Other	222	
Employment Dispute:		
Employment Dispute: Discriminatio	2	
Employment Dispute: Other	5	
Other	51	

<b>REAL PROPERTY</b>	<b>443</b>	<b>30.9%</b>
Ejectment*	31	
Eminent Domain/Condemnation	8	
Ground Rent	0	
Landlord/Tenant Dispute	88	
Mortgage Foreclosure:		
Residential*	233	
Commercial*	3	
Partition of Real Property*	5	
Quiet Title*	37	
Other*	38	
<b>CIVIL APPEALS</b>	<b>74</b>	<b>5.2%</b>
<i>- Administrative Agencies</i>		
Board of Assessment*	22	
Board of Elections*	0	
Dept. of Transportation*	32	
Zoning Board*	6	
Statutory Appeal - Other*	14	
Other*	0	
<b>MISCELLANEOUS</b>	<b>62</b>	<b>4.3%</b>
Common Law/		
Statutory Arbitration*	3	
Declaratory Judgment*	7	
Mandamus*	0	
Non-Domestic Relations		
Restraining Order*	0	
Quo Warranto*	0	
Replevin*	10	
Other*	42	
<b>TOTAL DOCKETED CASES:</b>	<b>1,432</b>	<b>100%</b>

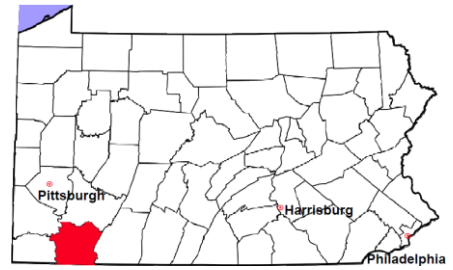
### Of the Docketed Cases:

Pro Se Filings: 5 0.3%      Class Action Suits: 6 0.4%      MDJ Appeals: 130 9.1%

\* Civil Other

# Fayette County

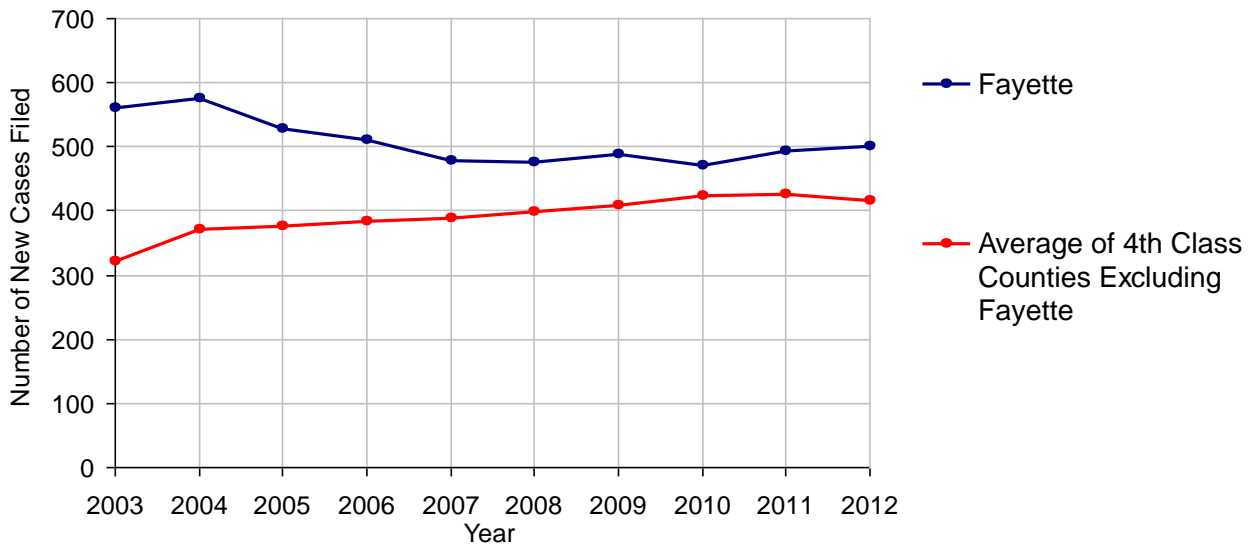
2012 Population Estimate: 135,660  
 Class of County: 4th  
 No. of Common Pleas Court Judgeships: 5



## 2012 Protection From Abuse

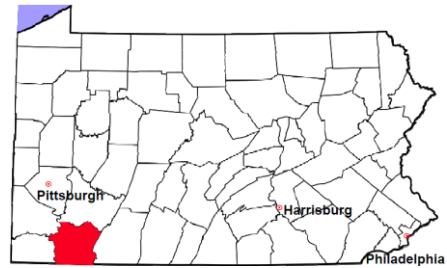
	No. of Petitions
Cases Pending 1/1/2012	1
New Cases Filed in 2012	501
<i>Of these, Petitions Requesting Temporary Orders: 496 (99.0%)</i>	
<i>Temporary Orders DENIED: 188 (37.9%), Temporary Orders GRANTED: 308 (62.1%)</i>	
<b>Cases Available for Processing</b>	<b>502</b>
Processed By:	
Temporary Order DENIED After Ex Parte Hearing and No Evidentiary Hearing Scheduled	74 15.1%
Temporary Order DISMISSED After Evidentiary Hearing and No Final Order Entered	4 0.8%
Final Order DENIED After Evidentiary Hearing Before a Judge	24 4.9%
Final Order GRANTED After Evidentiary Hearing Before a Judge	100 20.4%
Plaintiff Did Not Appear For Evidentiary Hearing	149 30.3%
Final Order by STIPULATION OR AGREEMENT Between the Parties	110 22.4%
Petition WITHDRAWN by Plaintiff	29 5.9%
TRANSFERRED to Another Jurisdiction	0
DECEASED Party	0
Other	1 0.2%
<b>Cases Processed</b>	<b>491 100.0%</b>
<b>Cases Pending 12/31/2012</b>	<b>11</b>

**PFA New Cases Filed, 2003-2012**



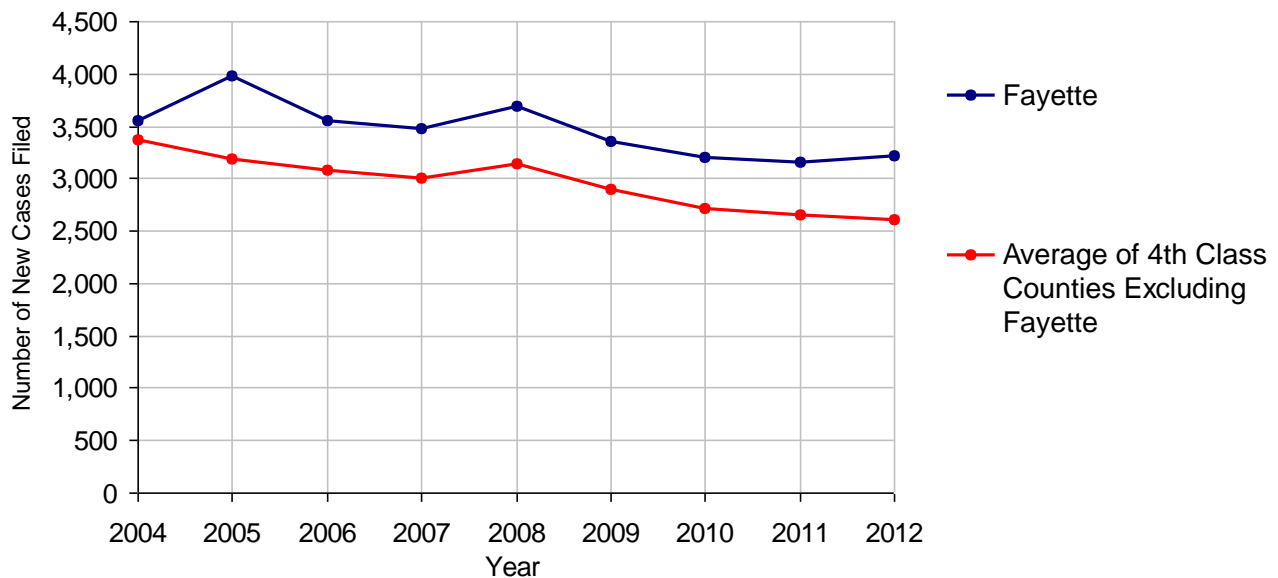
# Fayette County

2012 Population Estimate: 135,660  
 Class of County: 4th  
 No. of Common Pleas Court Judgeships: 5



<b>2012 Spousal &amp; Child Support</b>	<b>No. of Petitions</b>	
Cases Pending 1/1/2012	357	
New Cases Filed in 2012	3,217	
Dockets Transferred In (+)	27	
Dockets Transferred Out (-)	29	
<b>Cases Available for Processing</b>	<b>3,572</b>	
Processed By:		
Judge	95	3.0%
Intake Officer	3,073	97.0%
Hearing Officer	0	
Other	0	
<b>Cases Processed</b>	<b>3,168</b>	<b>100.0%</b>
<b>Cases Pending 12/31/2012</b>	<b>404</b>	

**Spousal & Child Support New Cases Filed, 2004-2012**

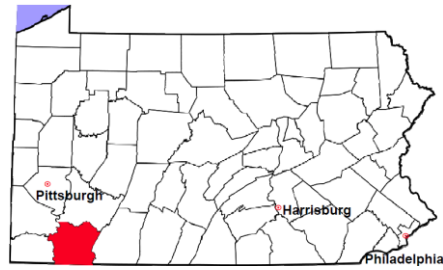


# Fayette County

2012 Population Estimate: 135,660

Class of County: 4th

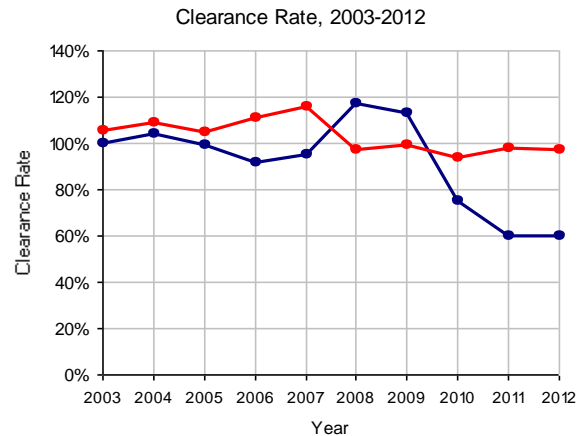
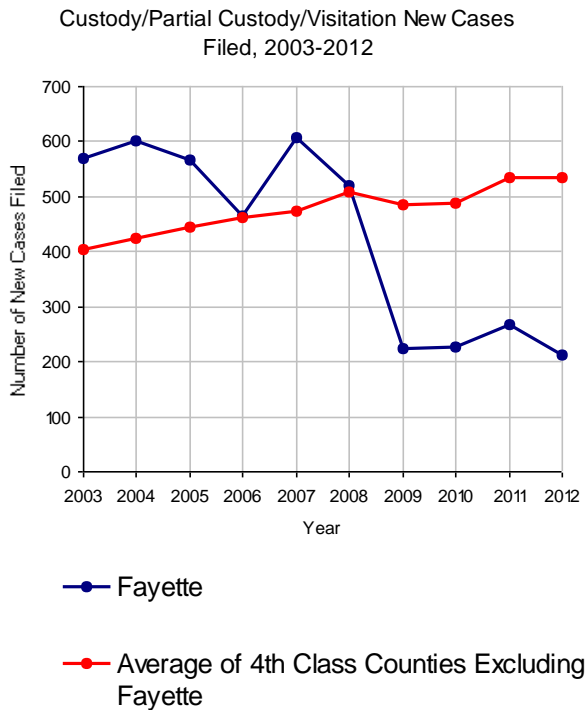
No. of Common Pleas Court Judgeships: 5



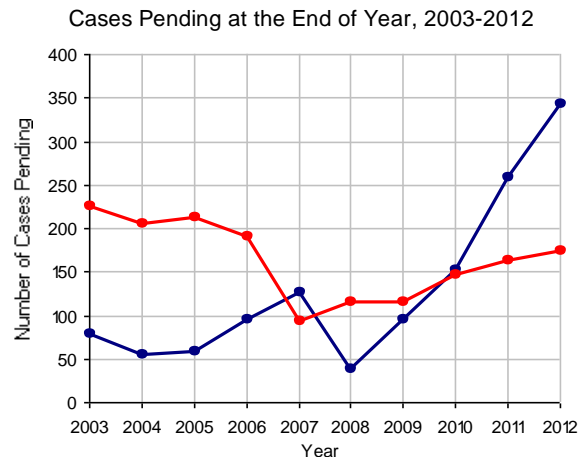
## 2012 Custody/Partial Custody/Visitation

No. of  
Petitions

Cases Pending 1/1/2012	259
New Cases Filed in 2012	213
<b>Cases Available for Processing</b>	<b>472</b>
Processed By:	
Judge	11 8.6%
Non-Judicial Officer	117 91.4%
Other	0
<b>Cases Processed</b>	<b>128 100.0%</b>
<b>Cases Pending 12/31/2012</b>	<b>344</b>

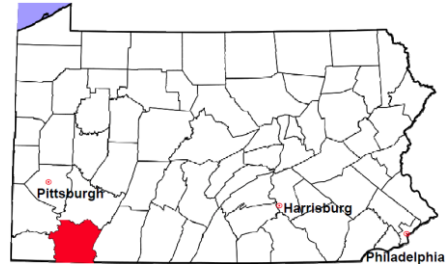


Note: Clearance Rate = Cases Processed / New Cases Filed



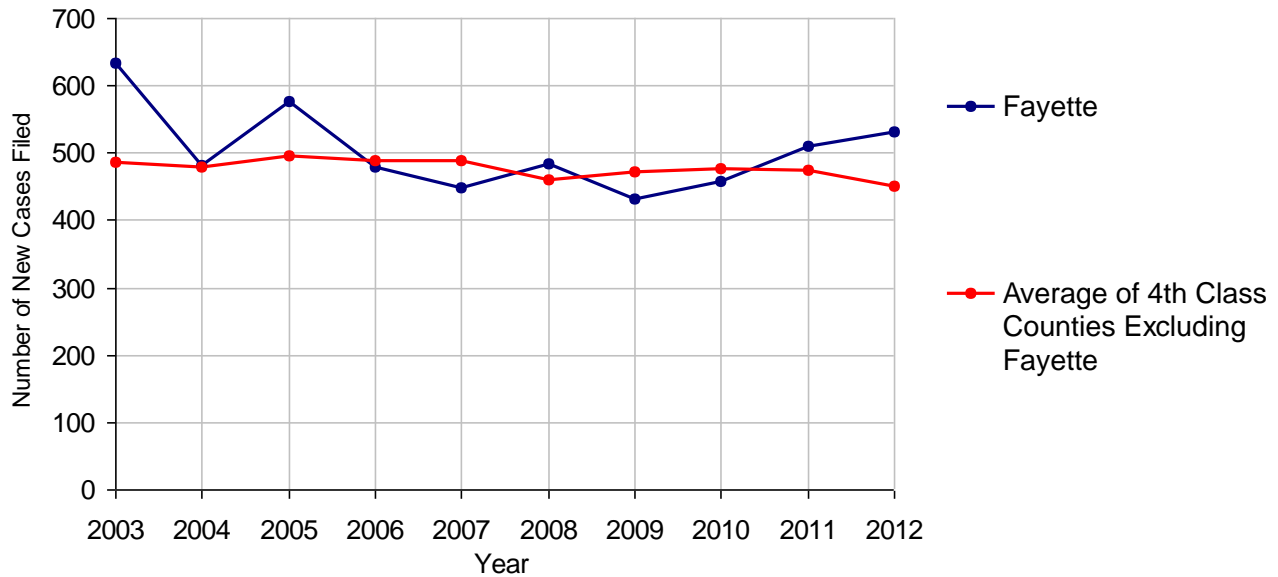
# Fayette County

2012 Population Estimate: 135,660  
 Class of County: 4th  
 No. of Common Pleas Court Judgeships: 5



<b>2012 Divorce</b>	<b>No. of Petitions</b>	
Cases Pending 1/1/2012	711	
New Cases Filed in 2012	531	
<b>Cases Available for Processing</b>	<b>1,242</b>	
Processed By:		
Contested Before a Judge	1	0.2%
Contested Before a Master	0	
Uncontested	442	82.3%
Other	94	17.5%
<b>Cases Processed</b>	<b>537</b>	<b>100.0%</b>
<b>Cases Pending 12/31/2012</b>	<b>705</b>	

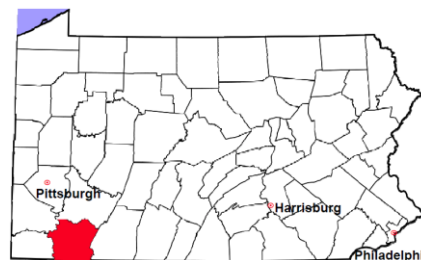
**Divorce New Cases Filed, 2003-2012**





# Fayette County

2012 Population Estimate: 135,660  
 Class of County: 4th  
 No. of Common Pleas Court Judgeships: 5



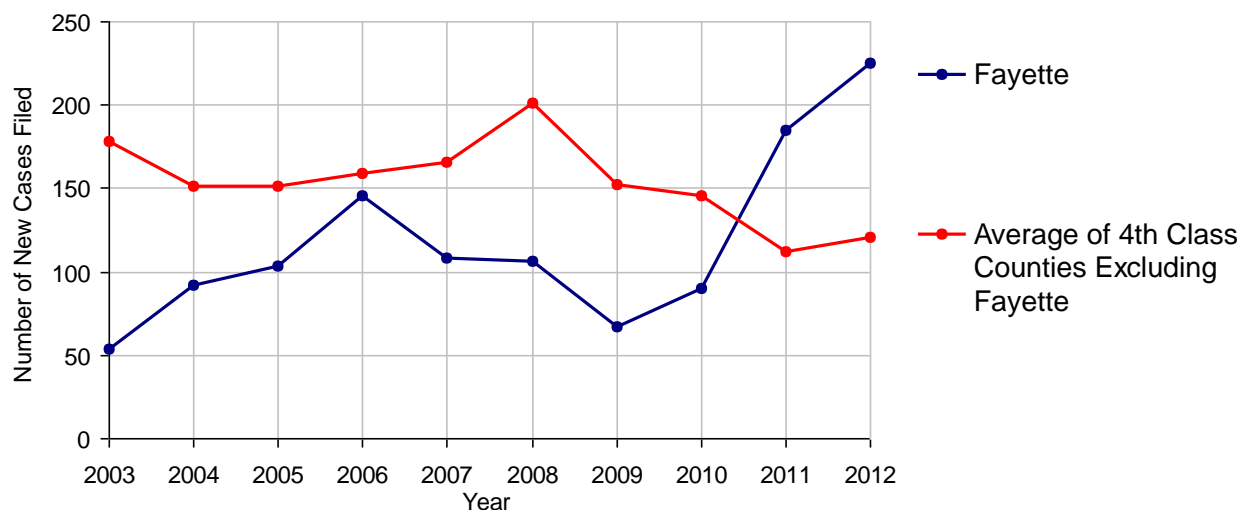
## 2012 Juvenile Dependency - Active Dependent Inventory



	Abuse/ Neglect	Status Offenses	Total
Cases Pending 1/1/2012	15	1	16
New Petitions Filed in 2012	216	9	225
Other	0	0	0
<b>Total Petitions Available for Processing</b>	<b>231</b>	<b>10</b>	<b>241</b>
Processed by:			
Adjudicated Dependent			
Judge	160	8	168
Master	0	0	0
Adjudicated NOT Dependent			
Judge	36	1	37
Master	0	0	0
Withdrawn/Dismissed/Inactive	0	0	0
Other	14	0	14
<b>Total Petitions Processed</b>	<b>210</b>	<b>9</b>	<b>219</b>
<b>Cases Pending 12/31/2012</b>	<b>21</b>	<b>1</b>	<b>22</b>

Data provided by CPCMS

Abuse/Neglect and Status Offenses New Cases Filed, 2003-2012



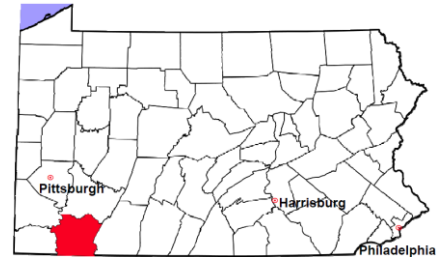
Note: Dependency data for 2002-2010 were collected manually. Dependency data for 2011 and 2012 were provided by CPCMS.

# Fayette County

2012 Population Estimate: 135,660

Class of County: 4th

No. of Common Pleas Court Judgeships: 5



## 2012 Juvenile Dependency - Adjudicated Dependent Inventory



	Abuse/ Neglect	Status Offenses	Total
Cases Pending 1/1/2012	219	13	232
New Adjudicated Dependent Cases	160	8	168
Other	9	0	9
<b>Total Adjudicated Dependent Cases</b>	<b>388</b>	<b>21</b>	<b>409</b>

### Court Supervision Terminated:

Family Reunification	2	1.6%	1	20.0%	3	2.4%
Adoption	12	9.8%	1	20.0%	13	10.2%
Placement with a Relative/Guardian	98	80.3%	1	20.0%	99	78.0%
Aged Out	5	4.1%	2	40.0%	7	5.5%
Other Permanency Outcomes*	3	2.5%	0		3	2.4%
Other**	2	1.6%	0		2	1.6%
<b>Total Adjudicated Dependent Cases Terminated</b>	<b>122</b>	<b>100.0%</b>	<b>5</b>	<b>100.0%</b>	<b>127</b>	<b>100.0%</b>
<b>Cases Pending 12/31/2012</b>	<b>266</b>		<b>16</b>		<b>282</b>	

Data provided by CPCMS

\* Other Permanency Outcomes include: adjudicated delinquent, death due to natural causes, death due to negligence, emancipation, permanent living arrangement, and parent has come forward.

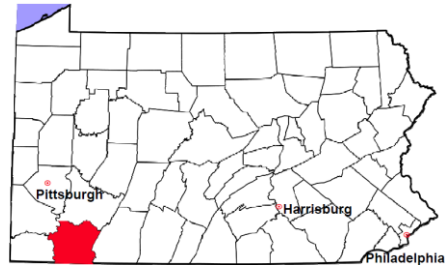
\*\* Other includes cases where court supervision is terminated due to transfer out of jurisdiction, withdrawal and administrative closure.

# Fayette County

2012 Population Estimate: 135,660

Class of County: 4th

No. of Common Pleas Court Judgeships: 5

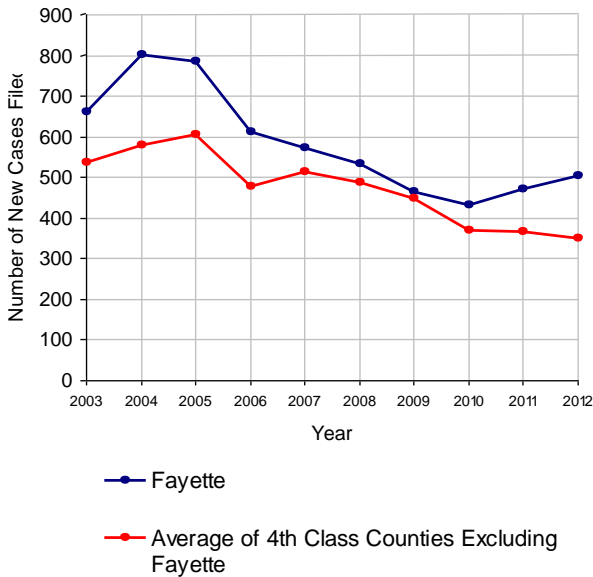


## 2012 Juvenile Delinquency

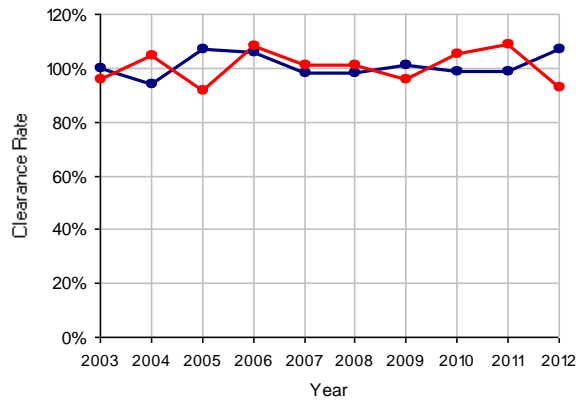
**No. of Cases**

Cases Pending 1/1/2012	88
New Cases Filed in 2012	503
<b>Cases Available for Processing</b>	<b>591</b>
Processed By:	
Judge	87 16.2%
Non-Judicial Officer	451 83.8%
Other	0
<b>Cases Processed</b>	<b>538 100.0%</b>
<b>Cases Pending 12/31/2012</b>	<b>53</b>

Juvenile Delinquency New Cases Filed, 2003-2012

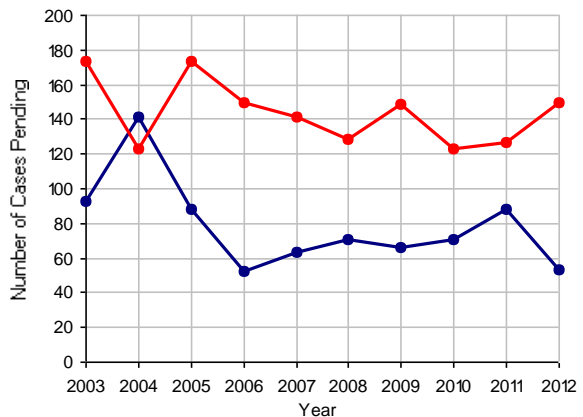


Clearance Rate, 2003-2012



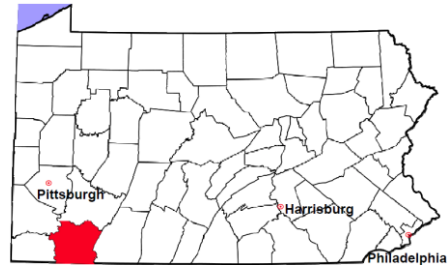
Note: Clearance Rate = Cases Processed / New Cases Filed

Cases Pending at the End of Year, 2003-2012



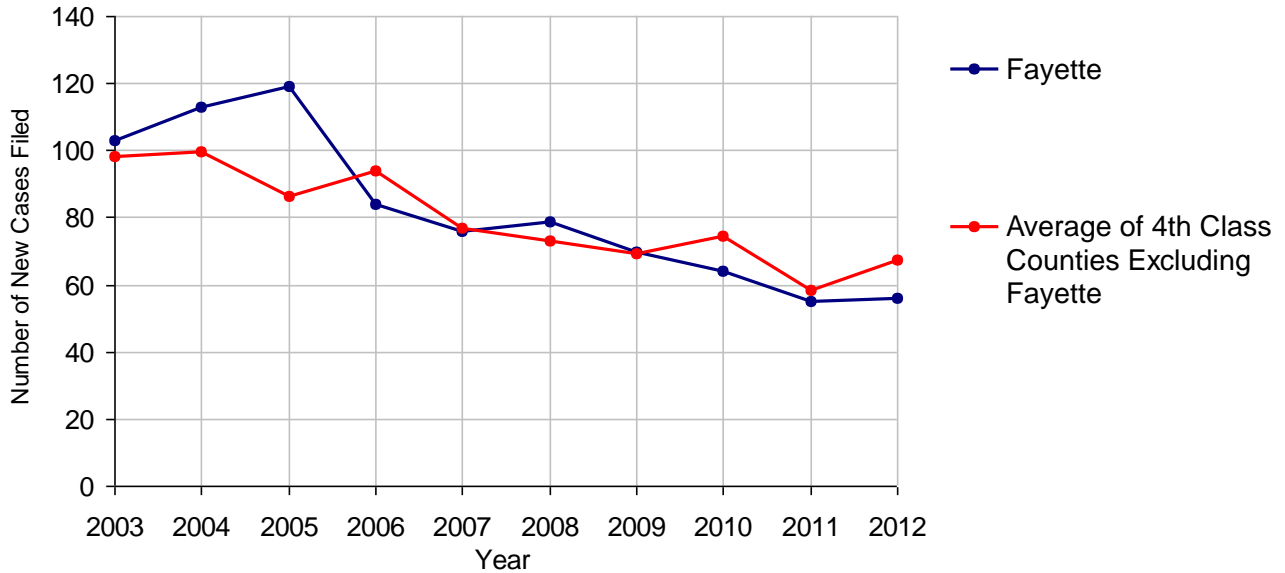
# Fayette County

2012 Population Estimate: 135,660  
 Class of County: 4th  
 No. of Common Pleas Court Judgeships: 5



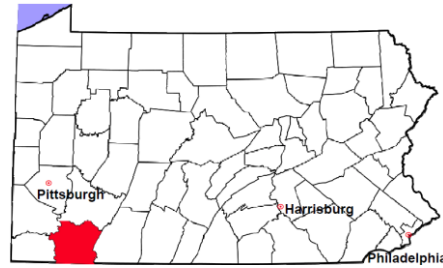
<b>2012 Accounts</b>	<b>No. of Cases</b>
Cases Pending 1/1/2012	21
New Cases Filed in 2012	56
<b>Cases Available for Processing</b>	<b>77</b>
Processed By:	
Contested before a Judge	0
Contested before a Non-judicial Officer	0
Uncontested	53 100.0%
Other	0
<b>Cases Processed</b>	<b>53 100.0%</b>
<b>Cases Pending 12/31/2012</b>	<b>24</b>

**Accounts New Cases Filed, 2003-2012**



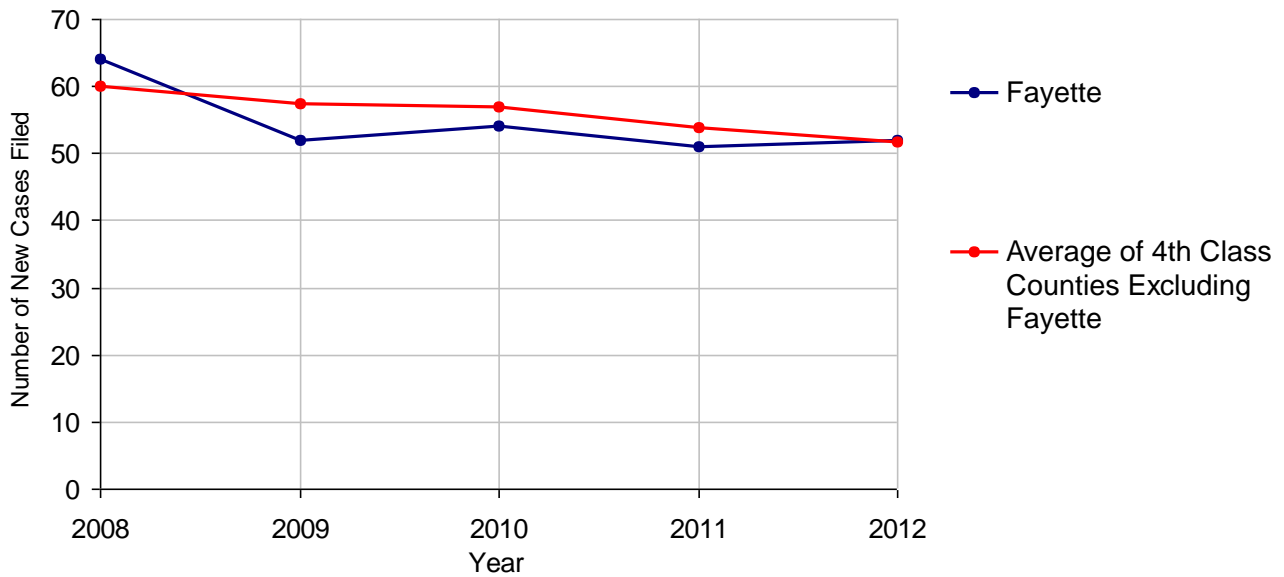
# Fayette County

2012 Population Estimate: 135,660  
 Class of County: 4th  
 No. of Common Pleas Court Judgeships: 5



<b>2012 Adoptions</b>		<b>No. of Cases</b>	
Cases Pending 1/1/2012		12	
New Cases Filed in 2012		52	
<b>Cases Available for Processing</b>		<b>64</b>	
Processed By:			
Contested before a Judge	Granted	0	
	Denied	0	
Uncontested	Granted	48	100.0%
	Denied	0	
Other		0	
<b>Cases Processed</b>		<b>48</b>	<b>100.0%</b>
<b>Cases Pending 12/31/2012</b>		<b>16</b>	

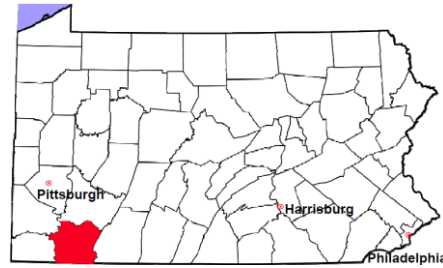
**Adoptions New Cases Filed, 2008-2012**



Note: Prior to 2008, each petition was counted as one new case, regardless of the number of children listed on the petition. Starting in 2008, each child listed on a petition is counted as a separate case. Therefore, statistics since 2008 should not be compared to statistics prior to 2008.

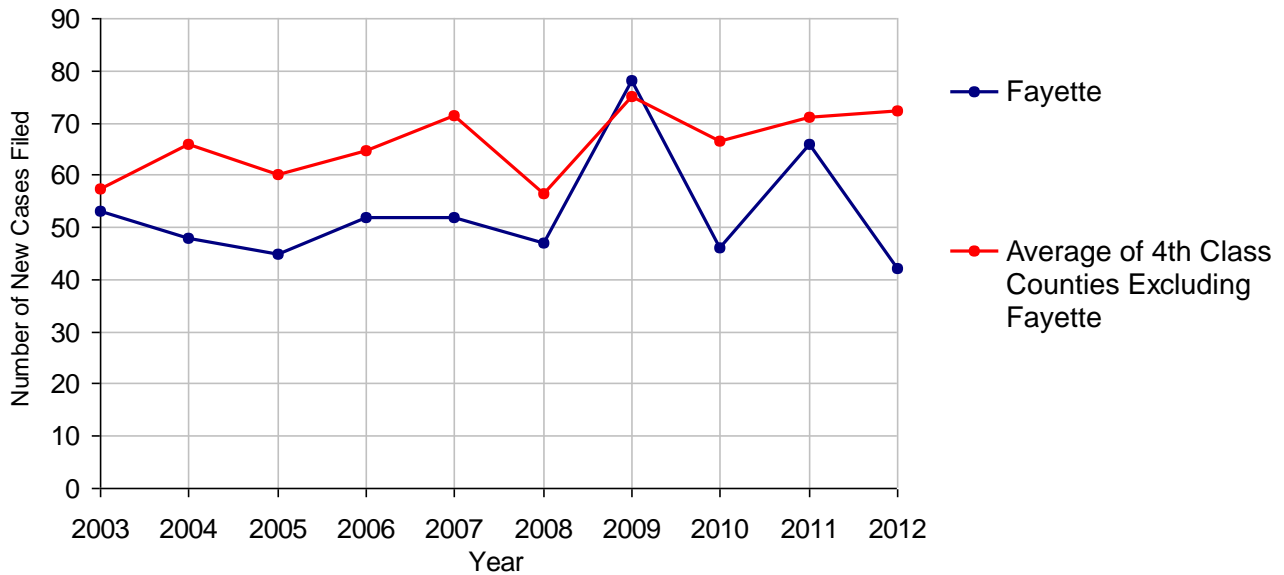
# Fayette County

2012 Population Estimate: 135,660  
 Class of County: 4th  
 No. of Common Pleas Court Judgeships: 5



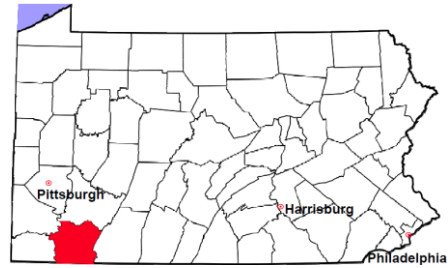
<b>2012 Relinquishments/Terminations</b>	<b>No. of Cases</b>
Cases Pending 1/1/2012	24
New Cases Filed in 2012	42
<b>Cases Available for Processing</b>	<b>66</b>
Processed By:	
Contested before a Judge	12    25.5%
Uncontested	34    72.3%
Other	1    2.1%
<b>Cases Processed</b>	<b>47    100.0%</b>
<b>Cases Pending 12/31/2012</b>	<b>19</b>

**Relinquishments/Terminations New Cases Filed, 2003-2012**



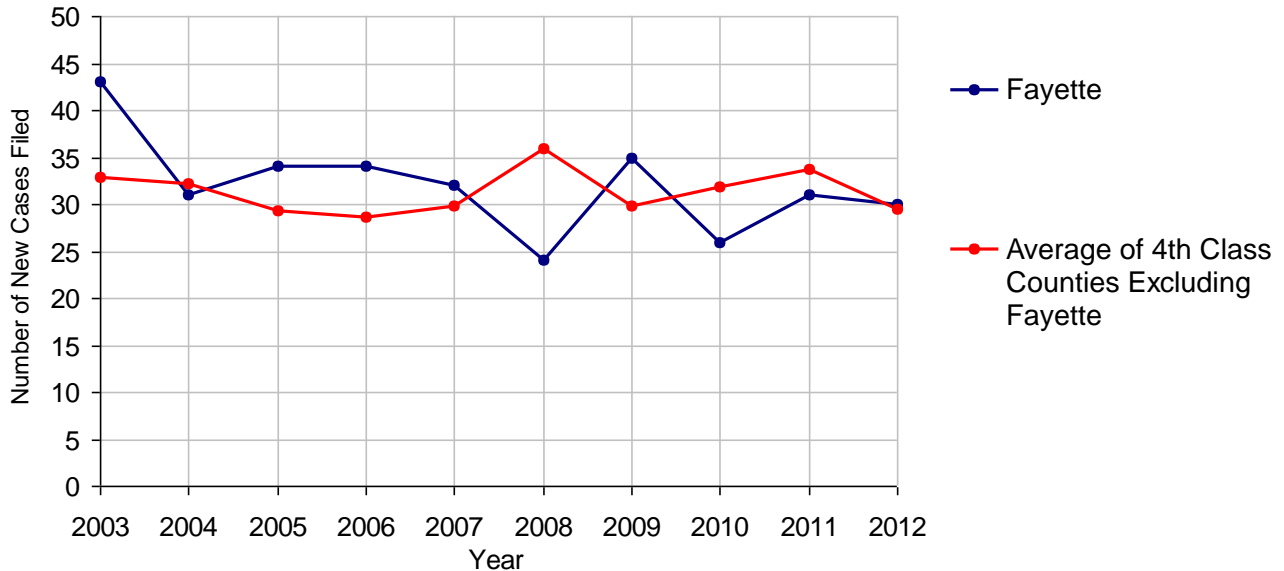
# Fayette County

2012 Population Estimate: 135,660  
 Class of County: 4th  
 No. of Common Pleas Court Judgeships: 5



<b>2012 Appointment of Guardians</b>	<b>No. of Cases</b>
Cases Pending 1/1/2012	15
New Cases Filed in 2012	30
<b>Cases Available for Processing</b>	<b>45</b>
Processed By:	
Contested before a Judge	0
Uncontested	25 100.0%
Other	0
<b>Cases Processed</b>	<b>25 100.0%</b>
<b>Cases Pending 12/31/2012</b>	<b>20</b>

**Appointment of Guardians New Cases Filed, 2003-2012**



# Fayette County

2012 Population Estimate: 135,660  
 Class of County: 4th  
 No. of Common Pleas Court Judgeships: 5



## 2012 Jury Yield and Utilization

### Jury Yield

Qualification Questionnaires/Summonses Mailed:	11,500	A		
Returned Undeliverable:	2,122	B	18.5%	Of Qualification Questionnaires/Summonses Mailed
Not Responded to:	1,176	C	10.2%	
the Number of Prospective Jurors:				
Disqualified:	721	D	6.3%	
Exempted:	2,509	E	21.8%	
Excused:	522	F	4.5%	
Deferred to New Term:	1,239	G	10.8%	
Deferred from Previous Term:	99	H	0.9%	
<b>Total Number of Qualified Jurors Available for Service:</b>	<b>3,310</b>	<b>I</b>	<b>28.8%</b>	

*I=A-B-C-D-E-F-G+H*

### Jury Utilization

the Number of Jurors:				
Reporting for Service:	6,078		183.6%	Of Jurors Qualified and Available
Told Not to Report for Service:	678		20.5%	
Sent to Courtroom for Jury Selection (Voir Dire):	3,717		61.2%	Of Jurors Reporting for Service
Impanelled or Sworn (jurors/alternates):	1,548		25.5%	
Removed for Cause/Hardship:	163			
Removed by Peremptory Challenge:	1,458			

### Jury Costs

Total Annual Budget for Juror Operations:	\$205,837.00	J
Average Cost Per Juror:	\$17.90	K

*K=J/A*

In mid-2011, AOPC began utilizing the National Center for State Courts' Jury Managers' Toolbox for collecting jury data. In 2012, the counties began providing additional jury data which included information about the summoning practices in the counties. With this additional data, we can now see not only how many citizens come to our courthouses every day in anticipation of serving on a jury, but the number of citizens actually summonsed and the number of those summonsed who are exempt, excused or disqualified from service. With this wider view of the jury process, we can determine the efficiency with which our courts operate, and with the assistance of the Jury Managers' Toolbox find guidance in streamlining the jury summonsing practices.