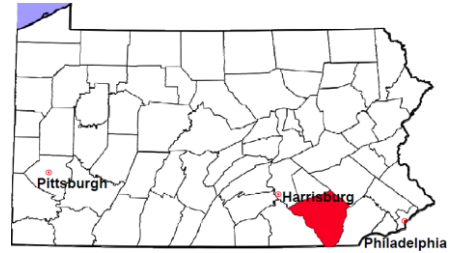


Lancaster County

2012 Population Estimate: 526,823
 Class of County: 3rd
 No. of Common Pleas Court Judgeships: 15



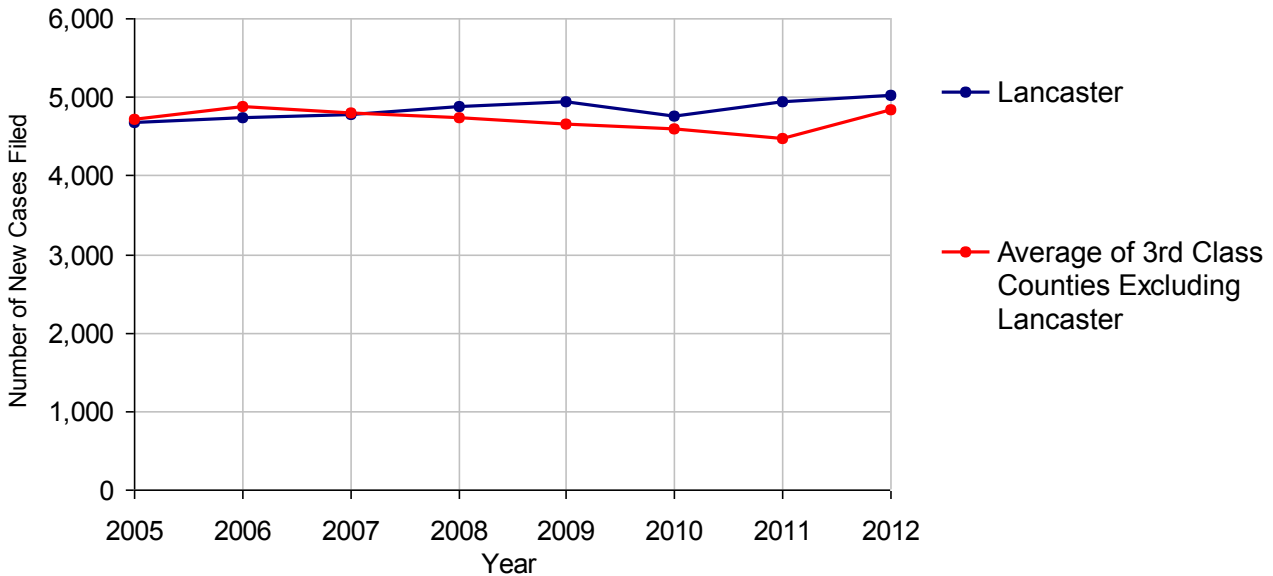
2012 Criminal	No. of Cases
---------------	--------------

Cases Pending 1/1/2012	4,160
New Cases Filed in 2012	5,014
Reopened Cases	276
Cases Available for Disposition	9,450
Disposed by:	
Withdrawn/Dismissed	298 5.0%
ARD	1,069 17.9%
Guilty Plea	4,238 71.1%
Non-Jury Trial	21 0.4%
Jury Trial	80 1.3%
Inactive	206 3.5%
Other	50 0.8%
Total Cases Disposed	5,962 100.0%
Cases Pending 12/31/2012	3,488
Cases Awaiting Sentencing	44

Age of Pending Cases as of 12/31/2012		
0-60 Days	824	23.6%
61-120 Days	734	21.0%
121-180 Days	543	15.6%
181-240 Days	449	12.9%
241-300 Days	247	7.1%
301-360 Days	161	4.6%
Over 360 Days	530	15.2%
Total	3,488	100.0%

Data provided by CPCMS

Criminal New Cases Filed, 2005-2012

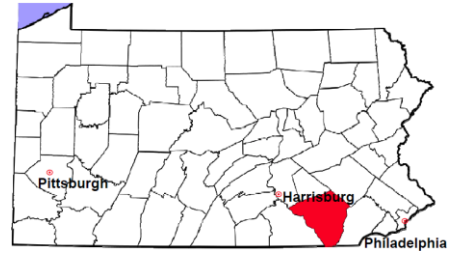


Lancaster County

2012 Population Estimate: 526,823

Class of County: 3rd

No. of Common Pleas Court Judgeships: 15



2012 Criminal - New Cases by Case Type



Case Type	Felony	Misdemeanor	Summary /Ungraded	Total
Person	363	403	0	766
Property	845	733	3	1,581
Drug	576	191	2	769
Weapon	38	19	0	57
Public Order	105	217	0	322
Motor Vehicle - DWI/DUI	0	1,497	0	1,497
Motor Vehicle - Other	3	15	0	18
Other	2	2	0	4
Total	1,932	3,077	5	5,014
	38.5%	61.4%	0.1%	100.0%

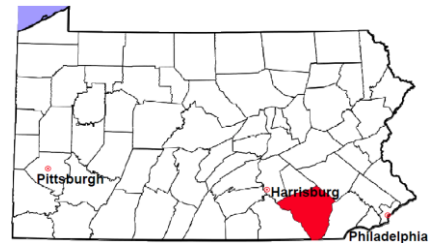
Data provided by CPCMS

Lancaster County

2012 Population Estimate: 526,823

Class of County: 3rd

No. of Common Pleas Court Judgeships: 15

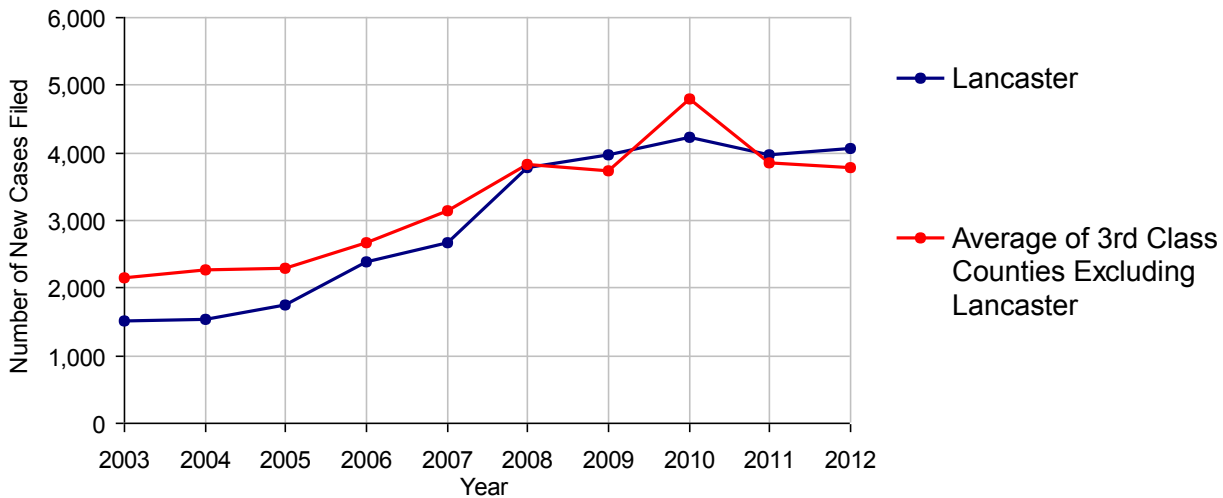


2012 Civil	Civil Action	Other	Total
Cases Pending 1/1/2012	3,072	1,352	4,424
Docketed Cases	2,451	1,604	4,055
Arbitration Appeals	19	1	20
Transferred In	0	0	0
Returned to Active	0	0	0
Cases Available for Processing	5,542	2,957	8,499
Disposed By:			
Default Judgments	760	748	1,508
Cases Decided by Arbitration Board	44	9	53
Dispositive Motions	66	23	89
Settlements	1	5	6
Moved to Inactive Status	55	22	77
Transferred/Withdrawn	4	2	6
Administrative Purge	0	0	0
Other	15	2	17
Jury Trial	14	0	14
Non-Jury Trial	2	1	3
Total Cases Disposed	961	812	1,773
Cases Pending 12/31/2012	4,581	2,145	6,726

Age of Pending Cases as of 12/31/2012 (Civil Action Only)

0-6 months	929	20.3%
7-12 months	1,094	23.9%
13-18 months	867	18.9%
19-24 months	717	15.7%
25-30 months	974	21.3%
31-36 months	0	
37-42 months	0	
43-48 months	0	
49-54 months	0	
55-60 months	0	
61-66 months	0	
67-72 months	0	
Over 72 months	0	
Total	4,581	100.0%

Docketed Cases, 2003-2012



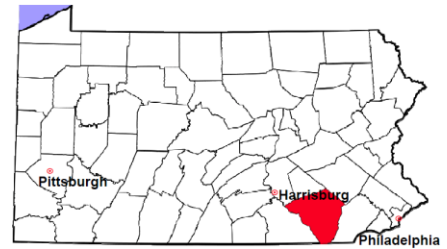
Note: Prior to June 2010, docketed cases under the "Other" category were not reported. The inclusion of these cases starting from June 2010 may contribute to an increase in docketed cases from 2009 to 2010.

Lancaster County

2012 Population Estimate: 526,823

Class of County: 3rd

No. of Common Pleas Court Judgeships: 15



2012 Civil - Docketed Cases Listed by Case Type

TORT	528	13.0%	REAL PROPERTY	1,289	31.8%
<i>(does not include mass tort)</i>			Ejectment*	80	
Intentional	15		Eminent Domain/Condemnation	26	
Malicious Prosecution	1		Ground Rent	0	
Motor Vehicle	351		Landlord/Tenant Dispute	48	
Nuisance	2		Mortgage Foreclosure:		
Premise Liability	64		Residential*	1,075	
Product Liability	11		Commercial*	0	
Slander/Libel/Defamation	0		Partition of Real Property*	5	
Other	84		Quiet Title*	12	
MASS TORT	7	0.2%	Other*	43	
Asbestos	0		CIVIL APPEALS	165	4.1%
Tobacco	0		<i>- Administrative Agencies</i>		
Toxic Tort - DES	0		Board of Assessment*	26	
Toxic Tort - Implant	0		Board of Elections*	1	
Toxic Waste	0		Dept. of Transportation*	78	
Other	7		Zoning Board*	17	
PROFESSIONAL LIABILITY	53	1.3%	Statutory Appeal - Other*	4	
Dental	1		Other*	39	
Legal	2		MISCELLANEOUS	198	4.9%
Medical Malpractice	35		Common Law/		
Other	15		Statutory Arbitration*	1	
CONTRACT	1,815	44.8%	Declaratory Judgment*	11	
<i>(does not include judgments)</i>			Mandamus*	5	
Buyer Plaintiff	19		Non-Domestic Relations		
Debt Collection: Credit Card	931		Restraining Order*	0	
Debt Collection: Other	697		Quo Warranto*	3	
Employment Dispute:			Replevin*	57	
Employment Dispute: Discriminatio	4		Other*	121	
Employment Dispute: Other	3		TOTAL DOCKETED CASES:	4,055	100%
Other	161				

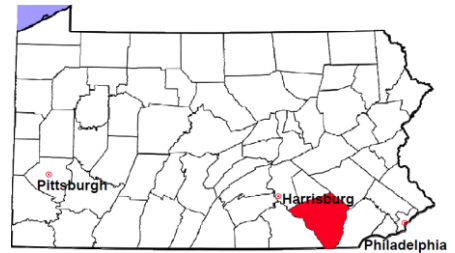
Of the Docketed Cases:

Pro Se Filings: 12 0.3% Class Action Suits: 0 MDJ Appeals: 190 4.7%

* Civil Other

Lancaster County

2012 Population Estimate: 526,823
 Class of County: 3rd
 No. of Common Pleas Court Judgeships: 15



2012 Protection From Abuse

**No. of
Petitions**

Cases Pending 1/1/2012 222

New Cases Filed in 2012 1,188

Of these, Petitions Requesting Temporary Orders: 1,188 (100.0%)

Temporary Orders DENIED: 347 (29.2%), Temporary Orders GRANTED: 841 (70.8%)

Cases Available for Processing 1,410

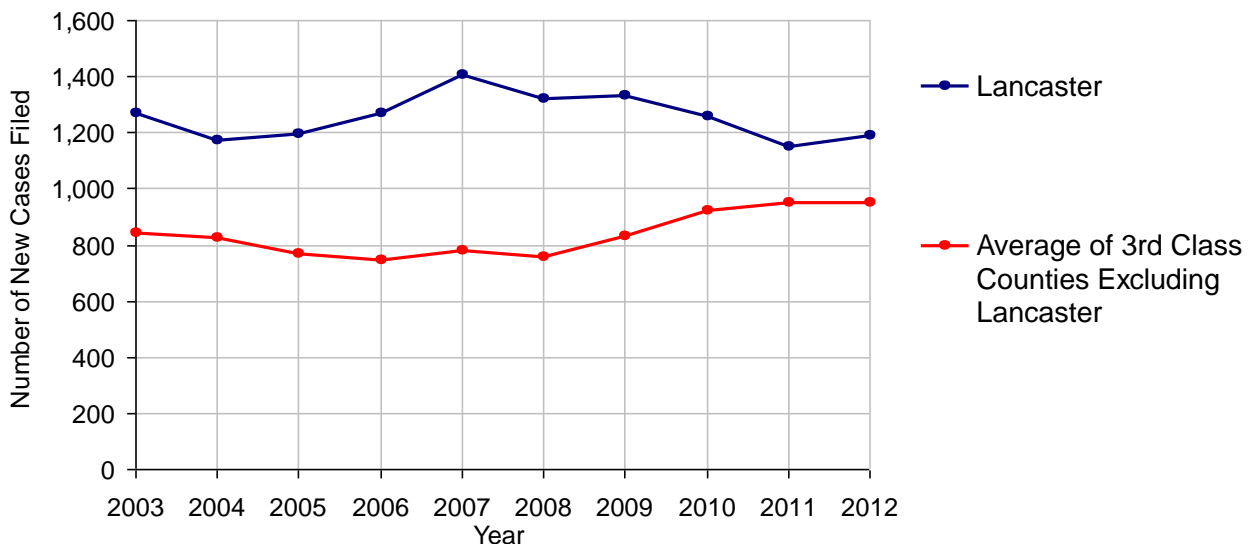
Processed By:

Temporary Order DENIED After Ex Parte Hearing and No Evidentiary Hearing Scheduled	0	
Temporary Order DISMISSED After Evidentiary Hearing and No Final Order Entered	0	
Final Order DENIED After Evidentiary Hearing Before a Judge	33	2.7%
Final Order GRANTED After Evidentiary Hearing Before a Judge	90	7.4%
Plaintiff Did Not Appear For Evidentiary Hearing	263	21.7%
Final Order by STIPULATION OR AGREEMENT Between the Parties	247	20.4%
Petition WITHDRAWN by Plaintiff	580	47.8%
TRANSFERRED to Another Jurisdiction	0	
DECEASED Party	0	
Other	0	

Cases Processed 1,213 100.0%

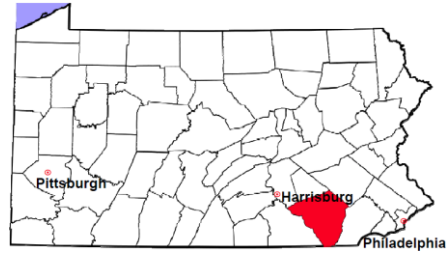
Cases Pending 12/31/2012 197

PFA New Cases Filed, 2003-2012



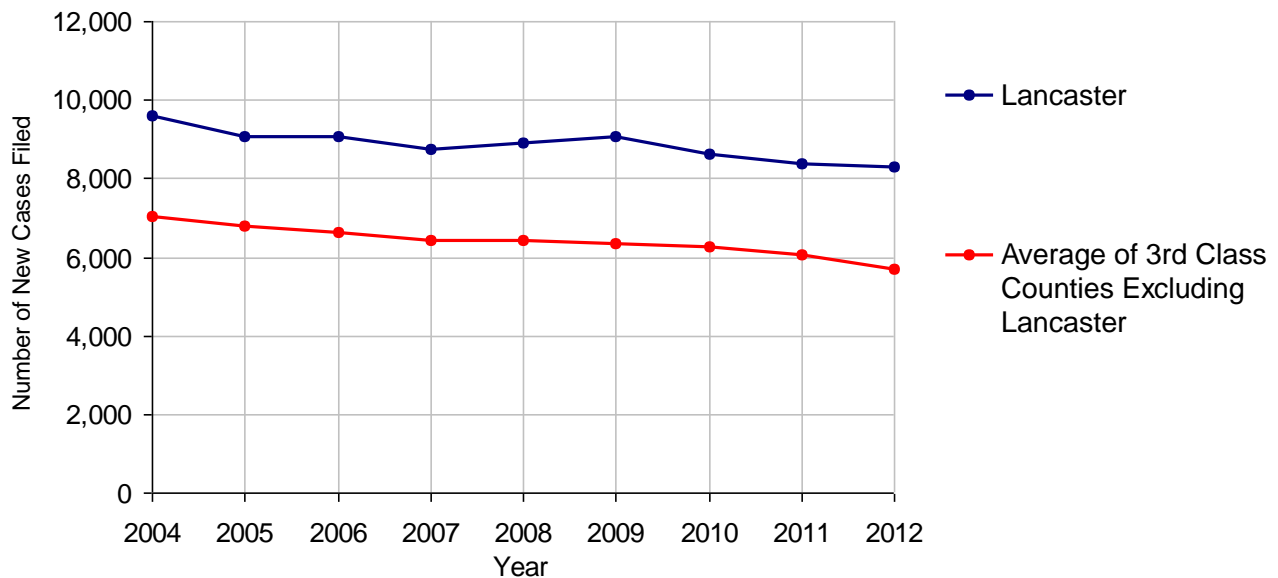
Lancaster County

2012 Population Estimate: 526,823
 Class of County: 3rd
 No. of Common Pleas Court Judgeships: 15



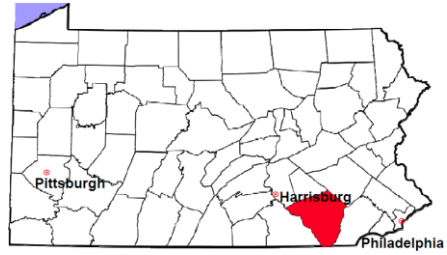
2012 Spousal & Child Support	No. of Petitions	
Cases Pending 1/1/2012	1,858	
New Cases Filed in 2012	8,300	
Dockets Transferred In (+)	119	
Dockets Transferred Out (-)	171	
Cases Available for Processing	10,106	
Processed By:		
Judge	818	9.8%
Intake Officer	7,514	90.2%
Hearing Officer	0	
Other	1	<0.1%
Cases Processed	8,333	100.0%
Cases Pending 12/31/2012	1,773	

Spousal & Child Support New Cases Filed, 2004-2012



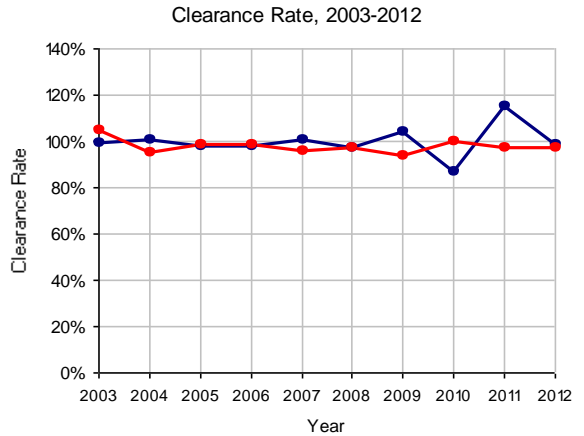
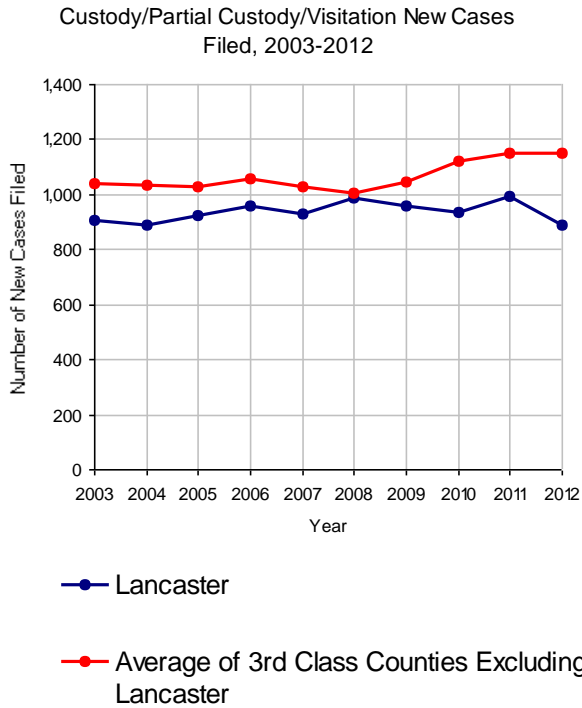
Lancaster County

2012 Population Estimate: 526,823
 Class of County: 3rd
 No. of Common Pleas Court Judgeships: 15

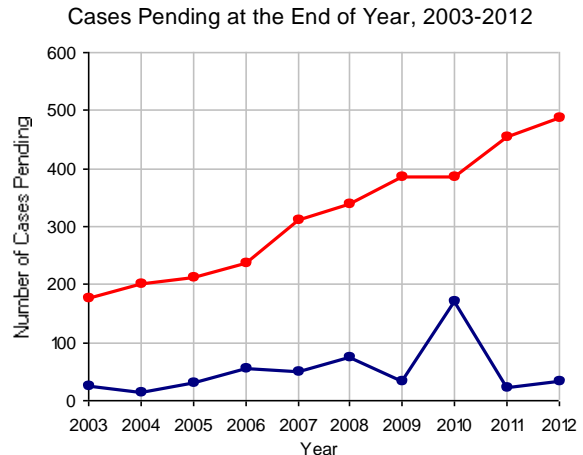


2012 Custody/Partial Custody/Visitation

	No. of Petitions	
Cases Pending 1/1/2012	21	
New Cases Filed in 2012	886	
Cases Available for Processing	907	
Processed By:		
Judge	252	28.9%
Non-Judicial Officer	534	61.2%
Other	87	10.0%
Cases Processed	873	100.0%
Cases Pending 12/31/2012	34	

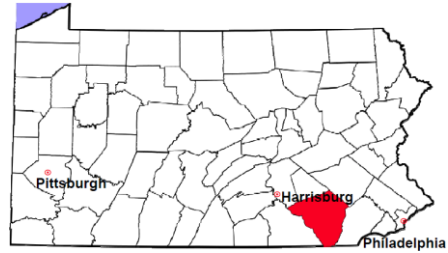


Note: Clearance Rate = Cases Processed / New Cases Filed



Lancaster County

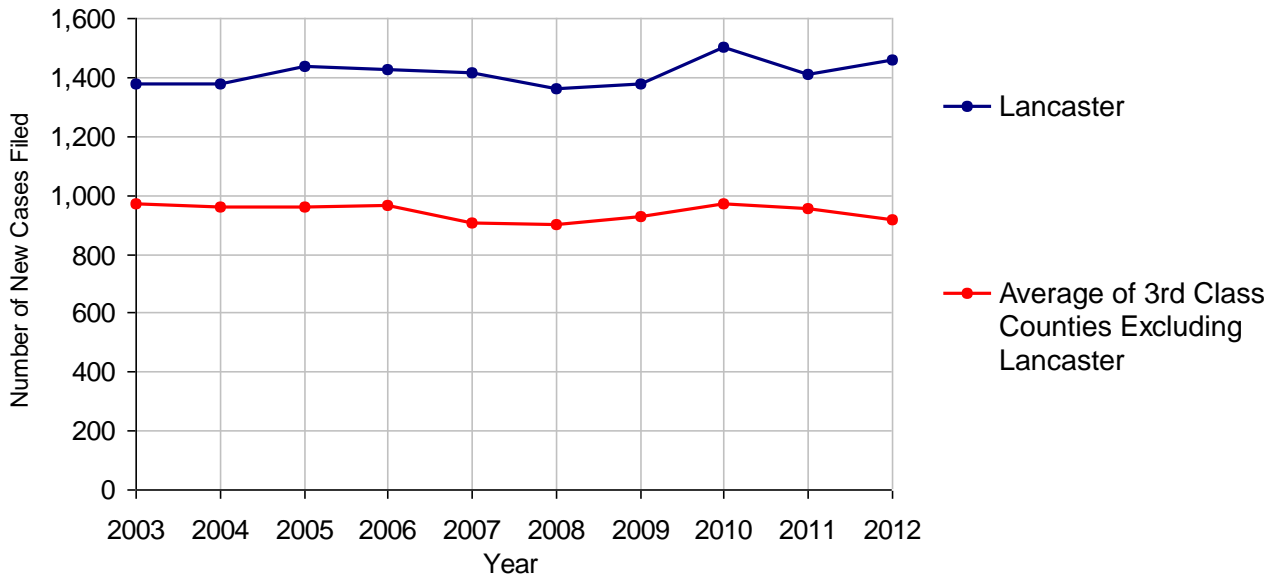
2012 Population Estimate: 526,823
 Class of County: 3rd
 No. of Common Pleas Court Judgeships: 15



2012 Divorce	No. of Petitions	
Cases Pending 1/1/2012	3,140 ^(R)	
New Cases Filed in 2012	1,457	
Cases Available for Processing	4,597	
Processed By:		
Contested Before a Judge	0	
Contested Before a Master	19	1.4%
Uncontested	1,331	98.4%
Other	2	0.1%
Cases Processed	1,352	100.0%
Cases Pending 12/31/2012	3,245	

(R) - Revised

Divorce New Cases Filed, 2003-2012

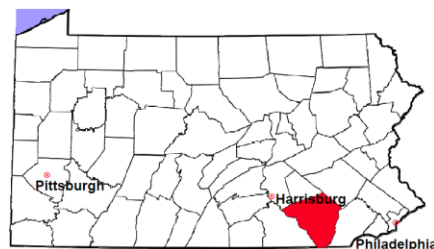


Lancaster County

2012 Population Estimate: 526,823

Class of County: 3rd

No. of Common Pleas Court Judgeships: 15



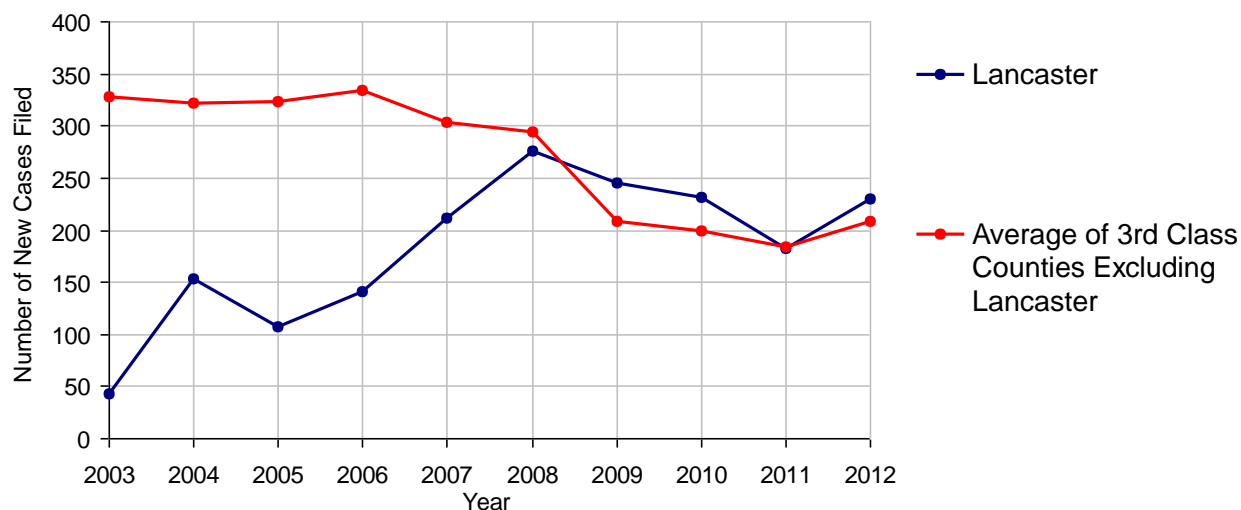
2012 Juvenile Dependency - Active Dependent Inventory



	Abuse/ Neglect	Status Offenses	Total
Cases Pending 1/1/2012	39	0	39
New Petitions Filed in 2012	229	1	230
Other	8	0	8
Total Petitions Available for Processing	276	1	277
Processed by:			
Adjudicated Dependent			
Judge	183	1	184
Master	0	0	0
Adjudicated NOT Dependent			
Judge	13	0	13
Master	0	0	0
Withdrawn/Dismissed/Inactive	1	0	1
Other	38	0	38
Total Petitions Processed	235	1	236
Cases Pending 12/31/2012	41	0	41

Data provided by CPCMS

Abuse/Neglect and Status Offenses New Cases Filed, 2003-2012



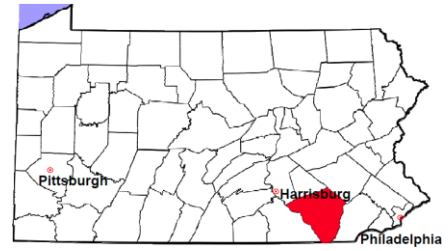
Note: Dependency data for 2002-2010 were collected manually. Dependency data for 2011 and 2012 were provided by CPCMS.

Lancaster County

2012 Population Estimate: 526,823

Class of County: 3rd

No. of Common Pleas Court Judgeships: 15



2012 Juvenile Dependency - Adjudicated Dependent Inventory

	Abuse/ Neglect	Status Offenses	Total			
Cases Pending 1/1/2012	484	2	486			
New Adjudicated Dependent Cases	183	1	184			
Other	19	0	19			
Total Adjudicated Dependent Cases	686	3	689			
<u>Court Supervision Terminated:</u>						
Family Reunification	21	9.9%	0	21	9.9%	
Adoption	81	38.0%	0	81	38.0%	
Placement with a Relative/Guardian	55	25.8%	0	55	25.8%	
Aged Out	26	12.2%	0	26	12.2%	
Other Permanency Outcomes*	6	2.8%	0	6	2.8%	
Other**	24	11.3%	0	24	11.3%	
Total Adjudicated Dependent Cases Terminated	213	100.0%	0	100.0%	213	100.0%
Cases Pending 12/31/2012	473		3		476	

Data provided by CPCMS

* Other Permanency Outcomes include: adjudicated delinquent, death due to natural causes, death due to negligence, emancipation, permanent living arrangement, and parent has come forward.

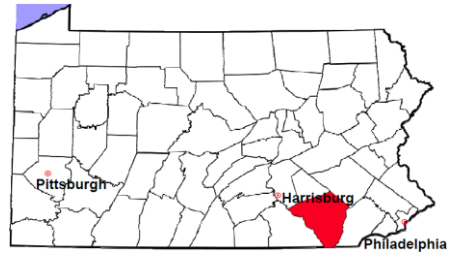
** Other includes cases where court supervision is terminated due to transfer out of jurisdiction, withdrawal and administrative closure.

Lancaster County

2012 Population Estimate: 526,823

Class of County: 3rd

No. of Common Pleas Court Judgeships: 15



2012 Juvenile Delinquency

No. of Cases

Cases Pending 1/1/2012 419

New Cases Filed in 2012 1,346

Cases Available for Processing 1,765

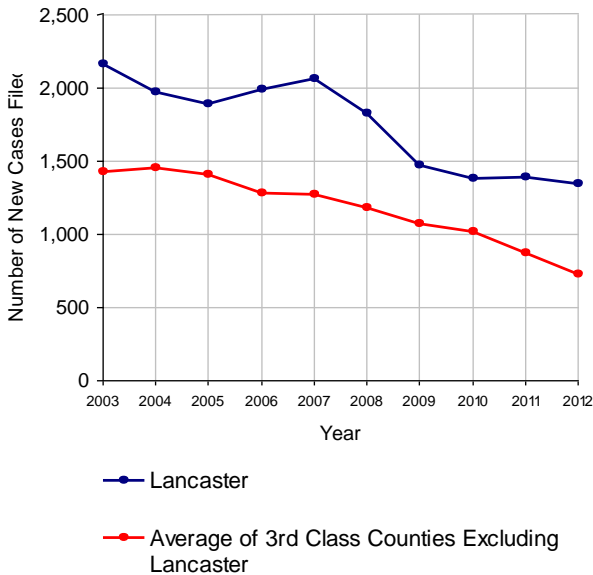
Processed By:

Judge	942	66.0%
Non-Judicial Officer	451	31.6%
Other	35	2.5%

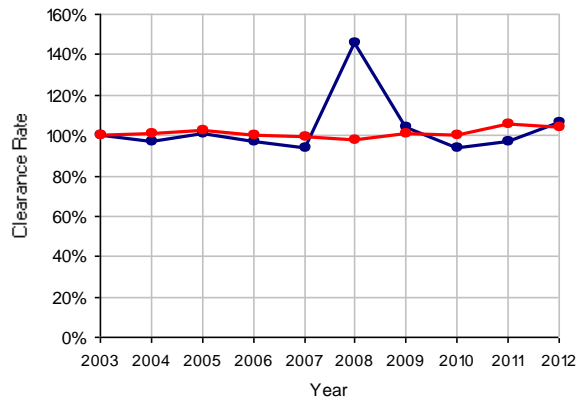
Cases Processed 1,428 100.0%

Cases Pending 12/31/2012 337

Juvenile Delinquency New Cases Filed, 2003-2012

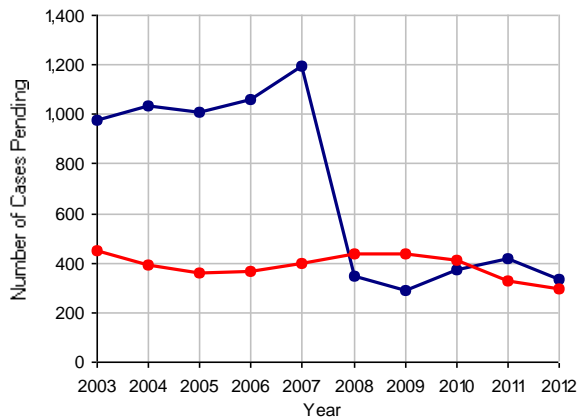


Clearance Rate, 2003-2012



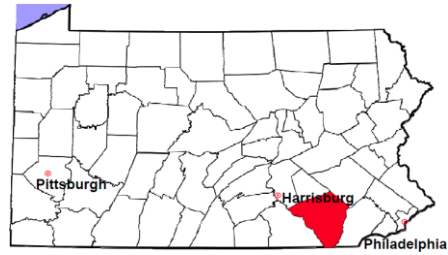
Note: Clearance Rate = Cases Processed / New Cases Filed

Cases Pending at the End of Year, 2003-2012



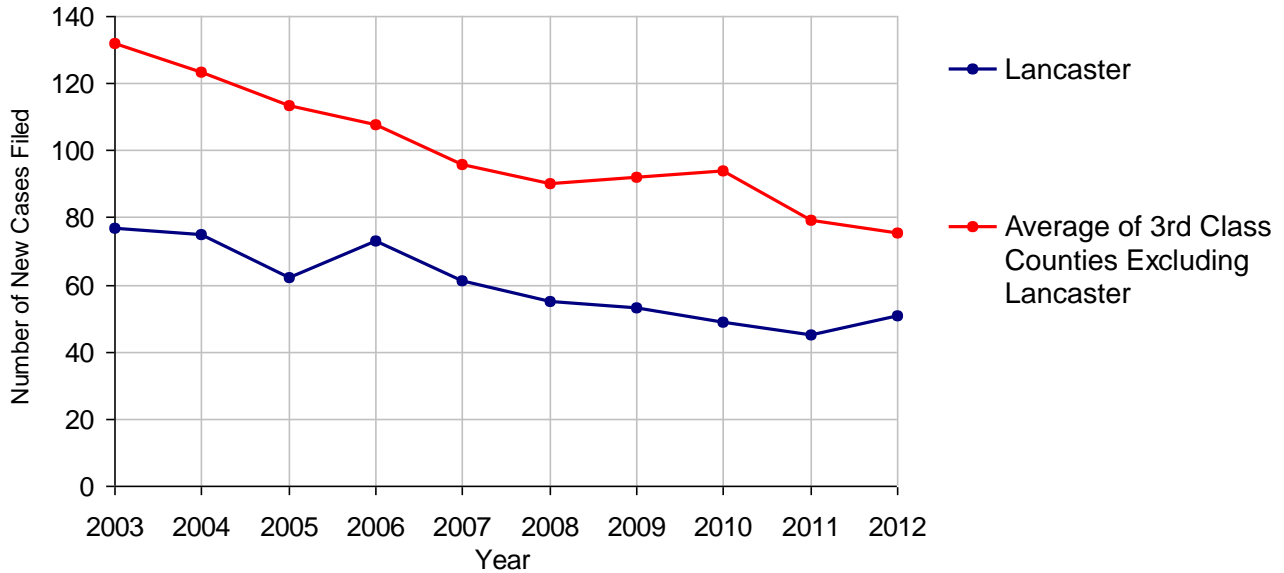
Lancaster County

2012 Population Estimate: 526,823
 Class of County: 3rd
 No. of Common Pleas Court Judgeships: 15



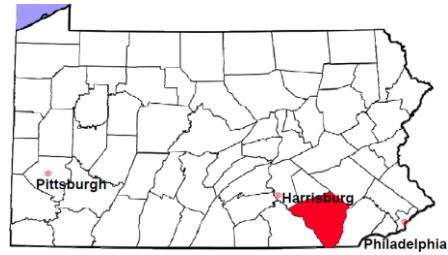
2012 Accounts	No. of Cases	
Cases Pending 1/1/2012	60	
New Cases Filed in 2012	51	
Cases Available for Processing	111	
Processed By:		
Contested before a Judge	2	4.3%
Contested before a Non-judicial Officer	0	
Uncontested	38	82.6%
Other	6	13.0%
Cases Processed	46	100.0%
Cases Pending 12/31/2012	65	

Accounts New Cases Filed, 2003-2012



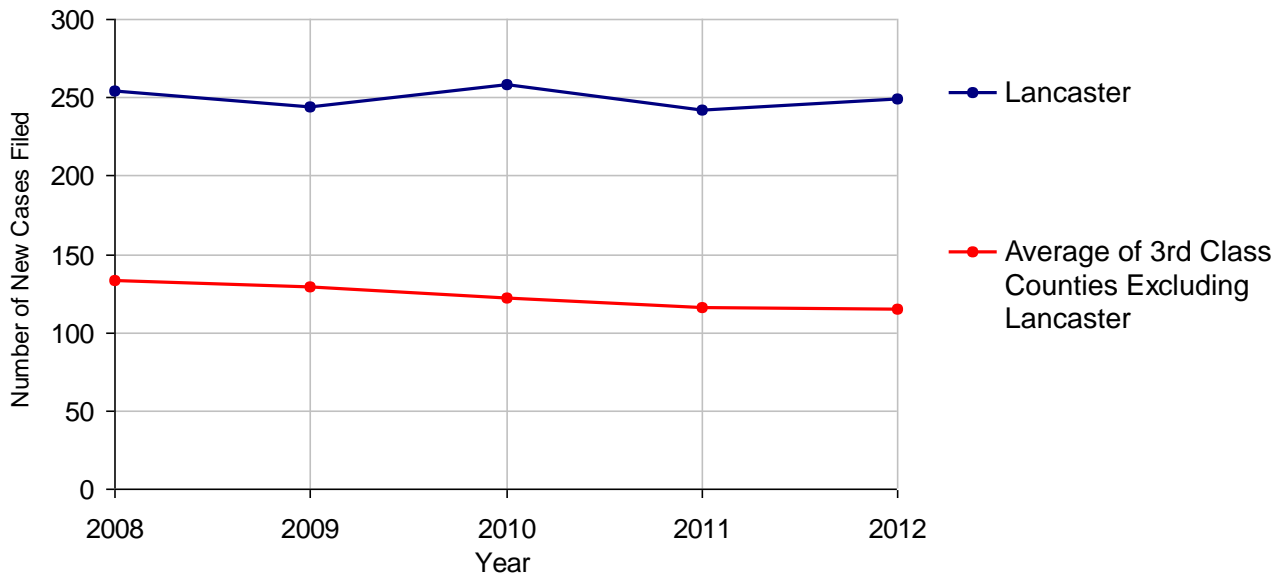
Lancaster County

2012 Population Estimate: 526,823
 Class of County: 3rd
 No. of Common Pleas Court Judgeships: 15



2012 Adoptions		No. of Cases	
Cases Pending 1/1/2012		66	
New Cases Filed in 2012		249	
Cases Available for Processing		315	
Processed By:			
Contested before a Judge	Granted	1	0.4%
	Denied	0	
Uncontested	Granted	240	99.6%
	Denied	0	
Other		0	
Cases Processed		241	100.0%
Cases Pending 12/31/2012		74	

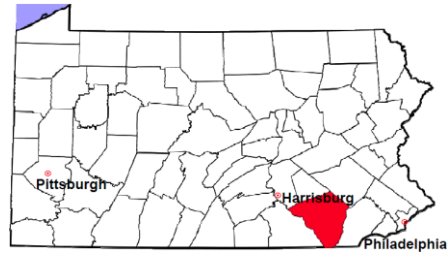
Adoptions New Cases Filed, 2008-2012



Note: Prior to 2008, each petition was counted as one new case, regardless of the number of children listed on the petition. Starting in 2008, each child listed on a petition is counted as a separate case. Therefore, statistics since 2008 should not be compared to statistics prior to 2008.

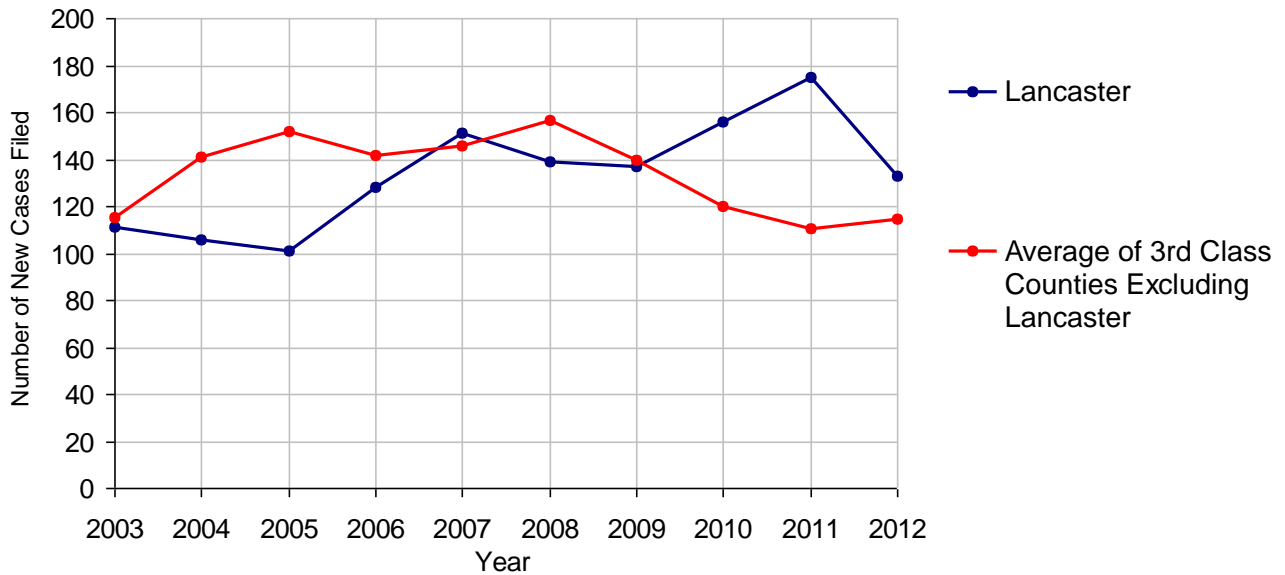
Lancaster County

2012 Population Estimate: 526,823
 Class of County: 3rd
 No. of Common Pleas Court Judgeships: 15



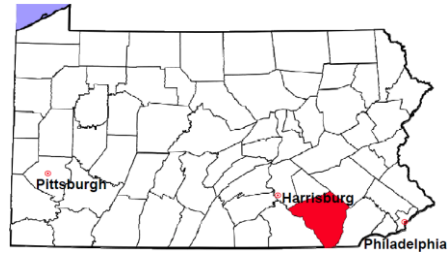
2012 Relinquishments/Terminations	No. of Cases	
Cases Pending 1/1/2012	89	
New Cases Filed in 2012	133	
Cases Available for Processing	222	
Processed By:		
Contested before a Judge	34	28.8%
Uncontested	82	69.5%
Other	2	1.7%
Cases Processed	118	100.0%
Cases Pending 12/31/2012	104	

Relinquishments/Terminations New Cases Filed, 2003-2012



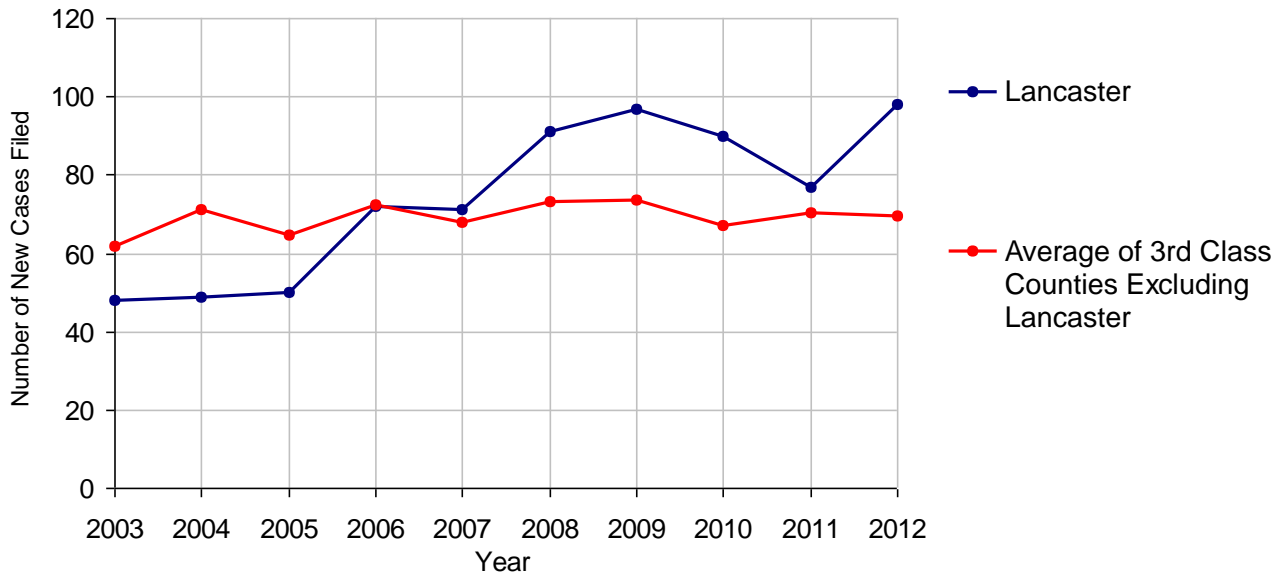
Lancaster County

2012 Population Estimate: 526,823
 Class of County: 3rd
 No. of Common Pleas Court Judgeships: 15



2012 Appointment of Guardians		No. of Cases
Cases Pending 1/1/2012		28
New Cases Filed in 2012		98
Cases Available for Processing		126
Processed By:		
Contested before a Judge	34	35.1%
Uncontested	52	53.6%
Other	11	11.3%
Cases Processed	97	100.0%
Cases Pending 12/31/2012		29

Appointment of Guardians New Cases Filed, 2003-2012



Lancaster County

2012 Population Estimate: 526,823
 Class of County: 3rd
 No. of Common Pleas Court Judgeships: 15



2012 Jury Yield and Utilization

Jury Yield

Qualification Questionnaires/Summonses Mailed:	12,770	A		
Returned Undeliverable:	1,005	B	7.9%	Of Qualification Questionnaires/Summonses Mailed
Not Responded to:	740	C	5.8%	
the Number of Prospective Jurors:				
Disqualified:	1,842	D	14.4%	
Exempted:	65	E	0.5%	
Excused:	429	F	3.4%	
Deferred to New Term:	3,402	G	26.6%	
Deferred from Previous Term:	2,893	H	22.7%	
Total Number of Qualified Jurors Available for Service:	8,180	I	64.1%	

I=A-B-C-D-E-F-G+H

Jury Utilization

the Number of Jurors:				
Reporting for Service:	6,210		75.9%	Of Jurors Qualified and Available
Told Not to Report for Service:	2,117		25.9%	
Sent to Courtroom for Jury Selection (Voir Dire):	2,997		48.3%	Of Jurors Reporting for Service
Impanelled or Sworn (jurors/alternates):	1,005		16.2%	
Removed for Cause/Hardship:	465			
Removed by Peremptory Challenge:	745			

Jury Costs

Total Annual Budget for Juror Operations:	\$383,888.00	J
Average Cost Per Juror:	\$30.06	K

K=J/A

In mid-2011, AOPC began utilizing the National Center for State Courts' Jury Managers' Toolbox for collecting jury data. In 2012, the counties began providing additional jury data which included information about the summoning practices in the counties. With this additional data, we can now see not only how many citizens come to our courthouses every day in anticipation of serving on a jury, but the number of citizens actually summonsed and the number of those summonsed who are exempt, excused or disqualified from service. With this wider view of the jury process, we can determine the efficiency with which our courts operate, and with the assistance of the Jury Managers' Toolbox find guidance in streamlining the jury summonsing practices.