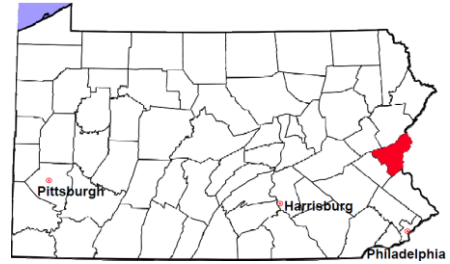


Northampton County

2012 Population Estimate: 299,267
 Class of County: 3rd
 No. of Common Pleas Court Judgeships: 9



2012 Criminal No. of Cases

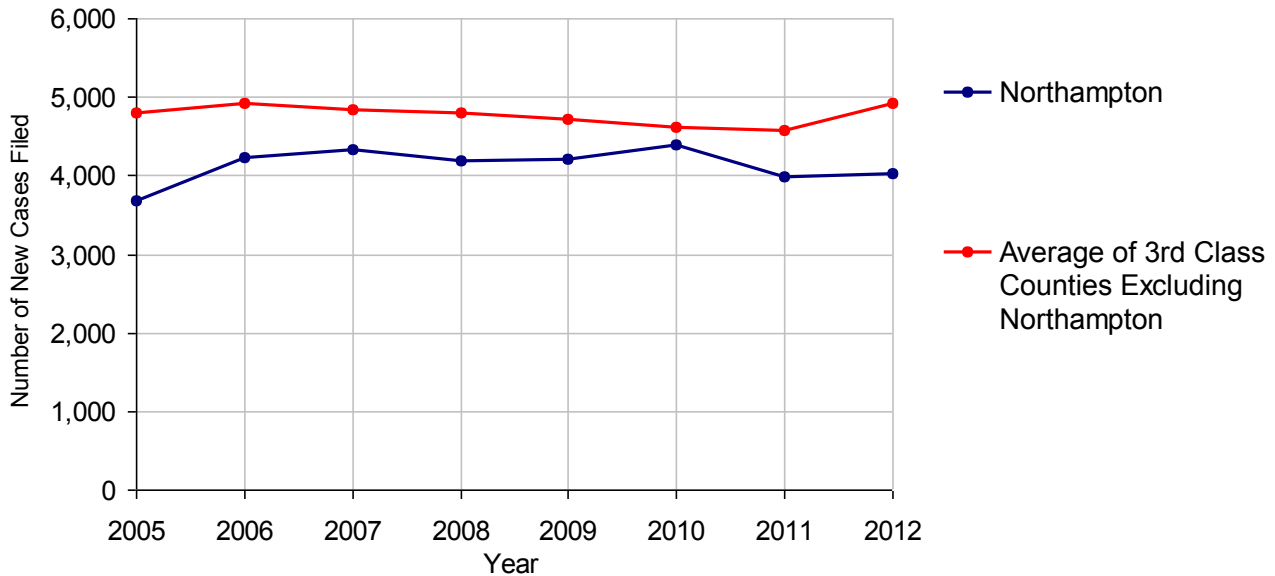
| | | |
|--|--------------|---------------|
| Cases Pending 1/1/2012 | 1,333 | |
| New Cases Filed in 2012 | 4,035 | |
| Reopened Cases | 300 | |
| Cases Available for Disposition | 5,668 | |
| Disposed by: | | |
| Withdrawn/Dismissed | 188 | 4.3% |
| ARD | 1,373 | 31.4% |
| Guilty Plea | 2,601 | 59.4% |
| Non-Jury Trial | 4 | 0.1% |
| Jury Trial | 21 | 0.5% |
| Inactive | 108 | 2.5% |
| Other | 81 | 1.9% |
| Total Cases Disposed | 4,376 | 100.0% |
| Cases Pending 12/31/2012 | 1,292 | |
| Cases Awaiting Sentencing | 69 | |



| Age of Pending Cases as of 12/31/2012 | | |
|---------------------------------------|--------------|---------------|
| 0-60 Days | 673 | 52.1% |
| 61-120 Days | 325 | 25.2% |
| 121-180 Days | 162 | 12.5% |
| 181-240 Days | 64 | 5.0% |
| 241-300 Days | 30 | 2.3% |
| 301-360 Days | 21 | 1.6% |
| Over 360 Days | 17 | 1.3% |
| Total | 1,292 | 100.0% |

Data provided by CPCMS

Criminal New Cases Filed, 2005-2012



Northampton County

2012 Population Estimate: 299,267

Class of County: 3rd

No. of Common Pleas Court Judgeships: 9



2012 Criminal - New Cases by Case Type



| Case Type | Felony | Misdemeanor | Summary /Ungraded | Total |
|-------------------------|--------------|--------------|-------------------|---------------|
| Person | 226 | 324 | 0 | 550 |
| Property | 380 | 426 | 3 | 809 |
| Drug | 251 | 643 | 0 | 894 |
| Weapon | 26 | 17 | 0 | 43 |
| Public Order | 53 | 267 | 2 | 322 |
| Motor Vehicle - DWI/DUI | 0 | 1,393 | 0 | 1,393 |
| Motor Vehicle - Other | 0 | 22 | 2 | 24 |
| Other | 0 | 0 | 0 | 0 |
| Total | 936 | 3,092 | 7 | 4,035 |
| | 23.2% | 76.6% | 0.2% | 100.0% |

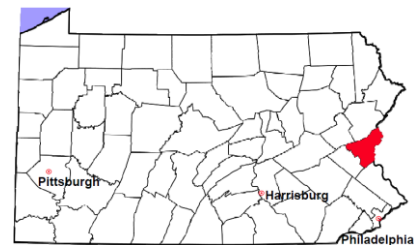
Data provided by CPCMS

Northampton County

2012 Population Estimate: 299,267

Class of County: 3rd

No. of Common Pleas Court Judgeships: 9

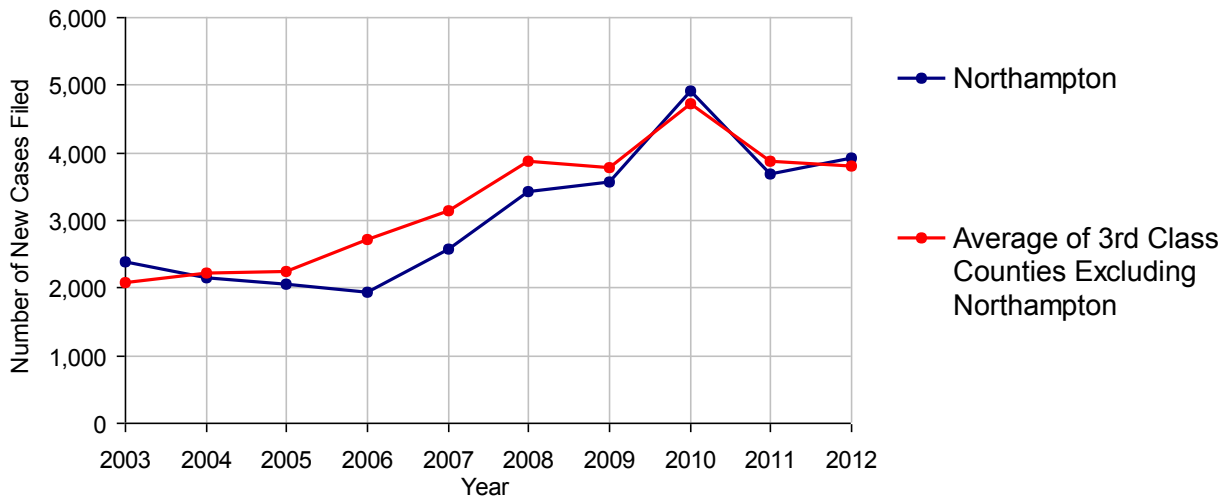


| 2012 Civil | Civil Action | Other | Total |
|---------------------------------------|---------------|--------------|---------------|
| Cases Pending 1/1/2012 | 8,913 | 4,179 | 13,092 |
| Docketed Cases | 2,109 | 1,814 | 3,923 |
| Arbitration Appeals | 20 | 5 | 25 |
| Transferred In | 15 | 0 | 15 |
| Returned to Active | 90 | 236 | 326 |
| Cases Available for Processing | 11,147 | 6,234 | 17,381 |
| Disposed By: | | | |
| Default Judgments | 734 | 789 | 1,523 |
| Cases Decided by Arbitration Board | 139 | 44 | 183 |
| Dispositive Motions | 20 | 29 | 49 |
| Settlements | 350 | 194 | 544 |
| Moved to Inactive Status | 4,740 | 0 | 4,740 |
| Transferred/Withdrawn | 91 | 266 | 357 |
| Administrative Purge | 0 | 0 | 0 |
| Other | 1,134 | 57 | 1,191 |
| Jury Trial | 13 | 1 | 14 |
| Non-Jury Trial | 17 | 19 | 36 |
| Total Cases Disposed | 7,238 | 1,399 | 8,637 |
| Cases Pending 12/31/2012 | 3,909 | 4,835 | 8,744 |

Age of Pending Cases as of 12/31/2012 (Civil Action Only)

| | | |
|----------------|--------------|---------------|
| 0-6 months | 697 | 17.8% |
| 7-12 months | 500 | 12.8% |
| 13-18 months | 251 | 6.4% |
| 19-24 months | 221 | 5.7% |
| 25-30 months | 149 | 3.8% |
| 31-36 months | 127 | 3.2% |
| 37-42 months | 98 | 2.5% |
| 43-48 months | 123 | 3.1% |
| 49-54 months | 79 | 2.0% |
| 55-60 months | 144 | 3.7% |
| 61-66 months | 38 | 1.0% |
| 67-72 months | 53 | 1.4% |
| Over 72 months | 1,429 | 36.6% |
| Total | 3,909 | 100.0% |

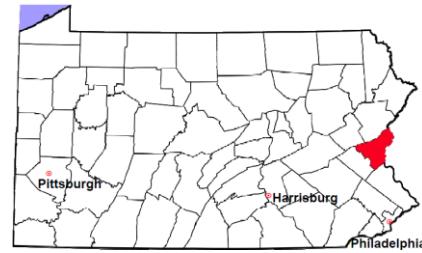
Docketed Cases, 2003-2012



Note: Prior to June 2010, docketed cases under the "Other" category were not reported. The inclusion of these cases starting from June 2010 may contribute to an increase in docketed cases from 2009 to 2010.

Northampton County

2012 Population Estimate: 299,267
 Class of County: 3rd
 No. of Common Pleas Court Judgeships: 9



2012 Civil - Docketed Cases Listed by Case Type

| | | | | | |
|-------------------------------------|--------------|--------------|----------------------------------|--------------|--------------|
| TORT | 544 | 13.9% | REAL PROPERTY | 1,471 | 37.5% |
| <i>(does not include mass tort)</i> | | | Ejectment* | 111 | |
| Intentional | 17 | | Eminent Domain/Condemnation | 10 | |
| Malicious Prosecution | 3 | | Ground Rent | 1 | |
| Motor Vehicle | 315 | | Landlord/Tenant Dispute | 6 | |
| Nuisance | 3 | | Mortgage Foreclosure: | | |
| Premise Liability | 114 | | Residential* | 1,286 | |
| Product Liability | 8 | | Commercial* | 12 | |
| Slander/Libel/Defamation | 3 | | Partition of Real Property* | 12 | |
| Other | 81 | | Quiet Title* | 16 | |
| MASS TORT | 60 | 1.5% | Other* | 17 | |
| Asbestos | 60 | | CIVIL APPEALS | 249 | 6.3% |
| Tobacco | 0 | | <i>- Administrative Agencies</i> | | |
| Toxic Tort - DES | 0 | | Board of Assessment* | 79 | |
| Toxic Tort - Implant | 0 | | Board of Elections* | 0 | |
| Toxic Waste | 0 | | Dept. of Transportation* | 156 | |
| Other | 0 | | Zoning Board* | 10 | |
| PROFESSIONAL LIABILITY | 37 | 0.9% | Statutory Appeal - Other* | 3 | |
| Dental | 1 | | Other* | 1 | |
| Legal | 6 | | MISCELLANEOUS | 101 | 2.6% |
| Medical Malpractice | 28 | | Common Law/ | | |
| Other | 2 | | Statutory Arbitration* | 0 | |
| CONTRACT | 1,461 | 37.2% | Declaratory Judgment* | 10 | |
| <i>(does not include judgments)</i> | | | Mandamus* | 2 | |
| Buyer Plaintiff | 13 | | Non-Domestic Relations | | |
| Debt Collection: Credit Card | 775 | | Restraining Order* | 0 | |
| Debt Collection: Other | 510 | | Quo Warranto* | 0 | |
| Employment Dispute: | | | Replevin* | 17 | |
| Employment Dispute: Discriminatio | 46 | | Other* | 72 | |
| Employment Dispute: Other | 12 | | TOTAL DOCKETED CASES: | 3,923 | 100% |
| Other | 105 | | | | |

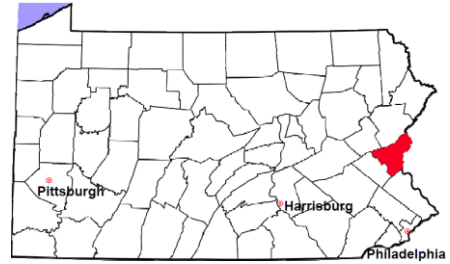
Of the Docketed Cases:

Pro Se Filings: 64 1.6% Class Action Suits: 0 MDJ Appeals: 284 7.2%

* Civil Other

Northampton County

2012 Population Estimate: 299,267
 Class of County: 3rd
 No. of Common Pleas Court Judgeships: 9



2012 Protection From Abuse

**No. of
Petitions**

Cases Pending 1/1/2012 82

New Cases Filed in 2012 1,030

Of these, Petitions Requesting Temporary Orders: 1,030 (100.0%)

Temporary Orders DENIED: 222 (21.6%), Temporary Orders GRANTED: 808 (78.4%)

Cases Available for Processing 1,112

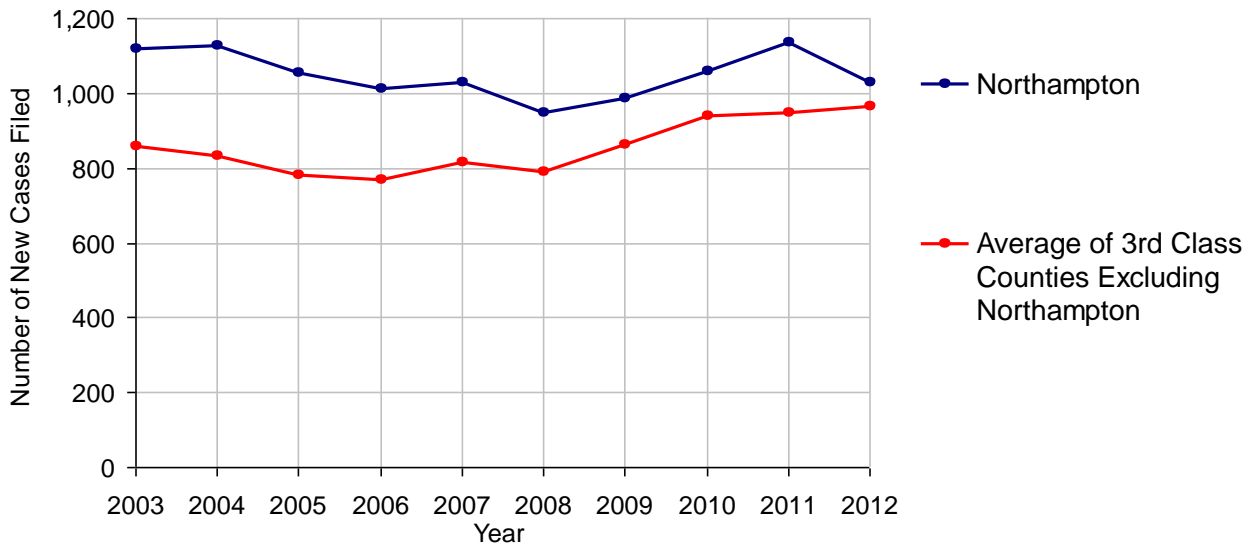
Processed By:

| | | |
|--|-----|-------|
| Temporary Order DENIED After Ex Parte Hearing and No Evidentiary Hearing Scheduled | 9 | 0.8% |
| Temporary Order DISMISSED After Evidentiary Hearing and No Final Order Entered | 162 | 14.9% |
| Final Order DENIED After Evidentiary Hearing Before a Judge | 53 | 4.9% |
| Final Order GRANTED After Evidentiary Hearing Before a Judge | 300 | 27.6% |
| Plaintiff Did Not Appear For Evidentiary Hearing | 160 | 14.7% |
| Final Order by STIPULATION OR AGREEMENT Between the Parties | 90 | 8.3% |
| Petition WITHDRAWN by Plaintiff | 312 | 28.7% |
| TRANSFERRED to Another Jurisdiction | 0 | |
| DECEASED Party | 2 | 0.2% |
| Other | 0 | |

Cases Processed 1,088 100.0%

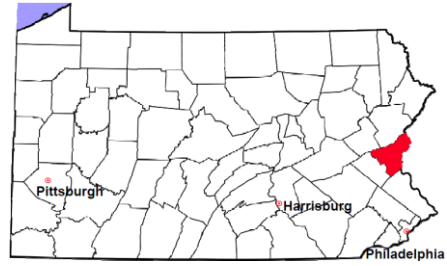
Cases Pending 12/31/2012 24

PFA New Cases Filed, 2003-2012



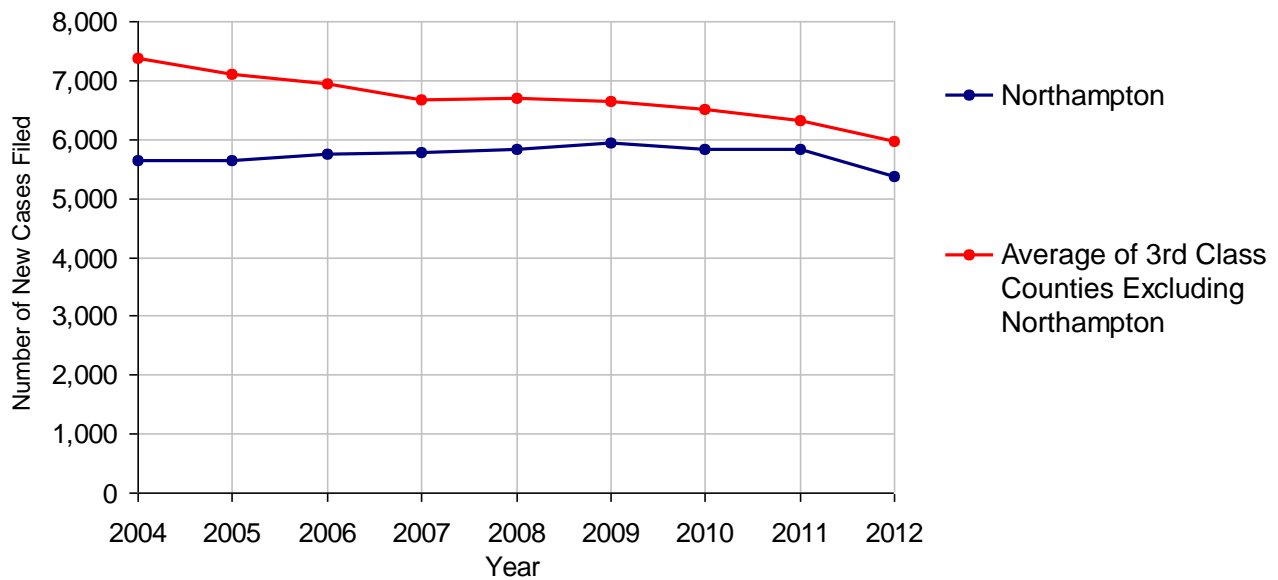
Northampton County

2012 Population Estimate: 299,267
 Class of County: 3rd
 No. of Common Pleas Court Judgeships: 9



| 2012 Spousal & Child Support | No. of Petitions | |
|---|-------------------------|---------------|
| Cases Pending 1/1/2012 | 1,251 | |
| New Cases Filed in 2012 | 5,357 | |
| Dockets Transferred In (+) | 182 | |
| Dockets Transferred Out (-) | 137 | |
| Cases Available for Processing | 6,653 | |
| Processed By: | | |
| Judge | 542 | 9.8% |
| Intake Officer | 4,989 | 90.2% |
| Hearing Officer | 0 | |
| Other | 0 | |
| Cases Processed | 5,531 | 100.0% |
| Cases Pending 12/31/2012 | 1,122 | |

Spousal & Child Support New Cases Filed, 2004-2012

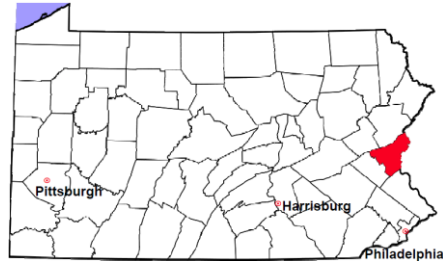


Northampton County

2012 Population Estimate: 299,267

Class of County: 3rd

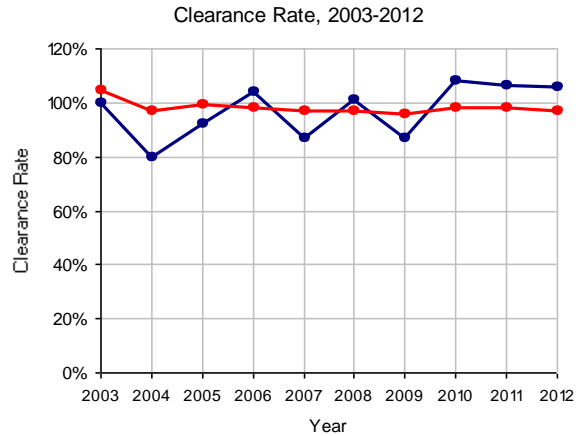
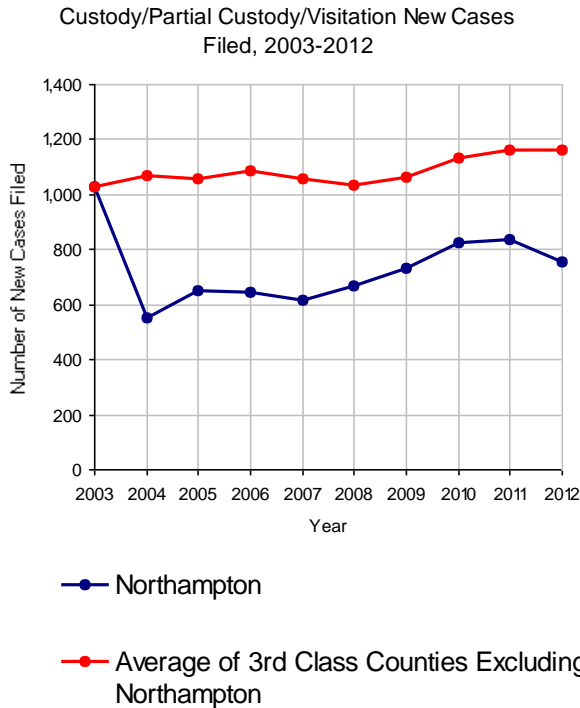
No. of Common Pleas Court Judgeships: 9



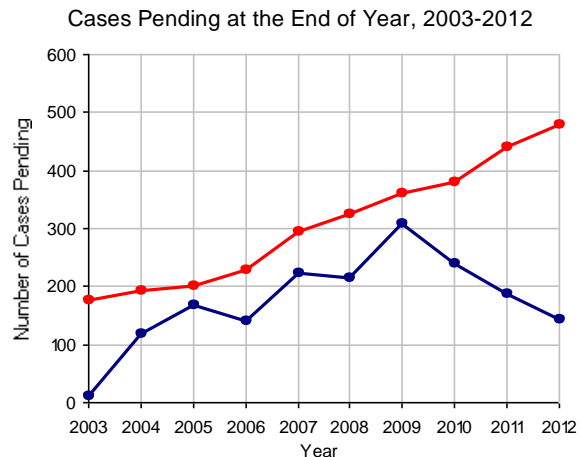
2012 Custody/Partial Custody/Visitation

No. of Petitions

| | |
|---------------------------------------|-------------------|
| Cases Pending 1/1/2012 | 188 |
| New Cases Filed in 2012 | 756 |
| Cases Available for Processing | 944 |
| Processed By: | |
| Judge | 75 9.4% |
| Non-Judicial Officer | 431 53.7% |
| Other | 296 36.9% |
| Cases Processed | 802 100.0% |
| Cases Pending 12/31/2012 | 142 |

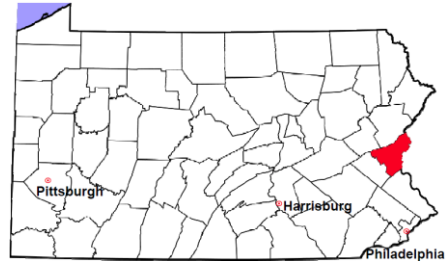


Note: Clearance Rate = Cases Processed / New Cases Filed



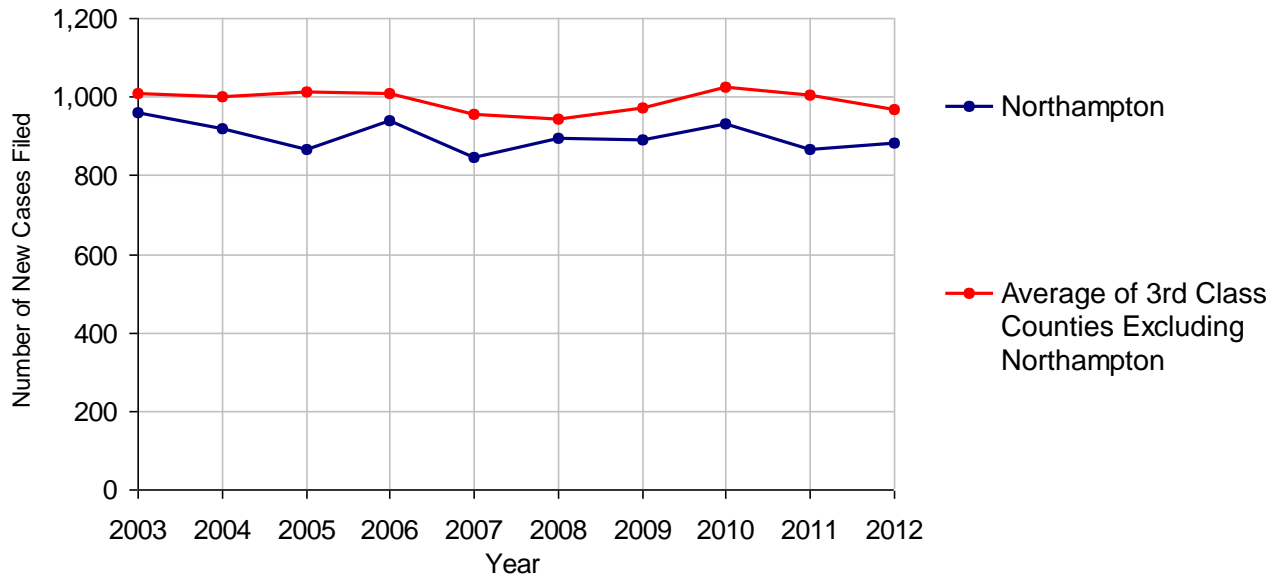
Northampton County

2012 Population Estimate: 299,267
 Class of County: 3rd
 No. of Common Pleas Court Judgeships: 9



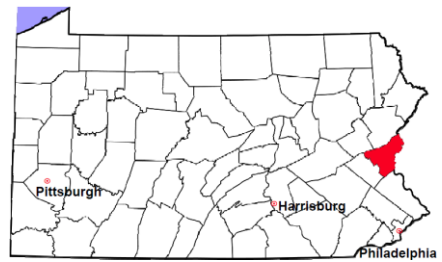
| 2012 Divorce | No. of Petitions | |
|---------------------------------------|-------------------------|---------------|
| Cases Pending 1/1/2012 | 1,336 | |
| New Cases Filed in 2012 | 882 | |
| Cases Available for Processing | 2,218 | |
| Processed By: | | |
| Contested Before a Judge | 1 | 0.1% |
| Contested Before a Master | 68 | 9.6% |
| Uncontested | 641 | 90.3% |
| Other | 0 | |
| Cases Processed | 710 | 100.0% |
| Cases Pending 12/31/2012 | 1,508 | |

Divorce New Cases Filed, 2003-2012



Northampton County

2012 Population Estimate: 299,267
 Class of County: 3rd
 No. of Common Pleas Court Judgeships: 9



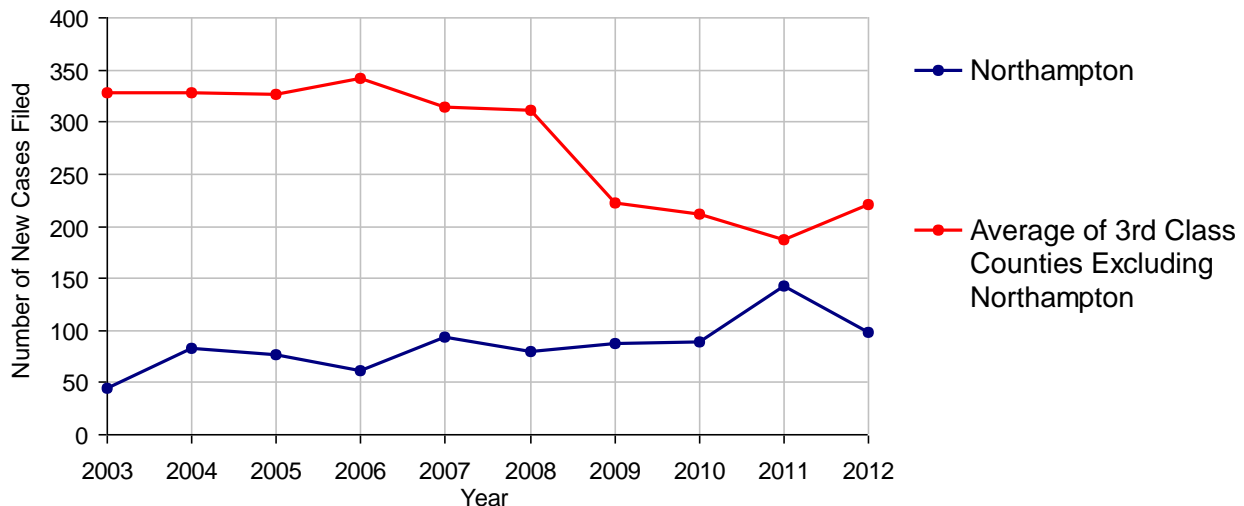
2012 Juvenile Dependency - Active Dependent Inventory



| | Abuse/ Neglect | Status Offenses | Total |
|---|-------------------|--------------------|------------|
| Cases Pending 1/1/2012 | 14 | 0 | 14 |
| New Petitions Filed in 2012 | 95 | 3 | 98 |
| Other | 5 | 1 | 6 |
| Total Petitions Available for Processing | 114 | 4 | 118 |
| Processed by: | | | |
| Adjudicated Dependent | | | |
| Judge | 9 | 0 | 9 |
| Master | 80 | 3 | 83 |
| Adjudicated NOT Dependent | | | |
| Judge | 4 | 0 | 4 |
| Master | 0 | 0 | 0 |
| Withdrawn/Dismissed/Inactive | 1 | 0 | 1 |
| Other | 8 | 0 | 8 |
| Total Petitions Processed | 102 | 3 | 105 |
| Cases Pending 12/31/2012 | 12 | 1 | 13 |

Data provided by CPCMS

Abuse/Neglect and Status Offenses New Cases Filed, 2003-2012



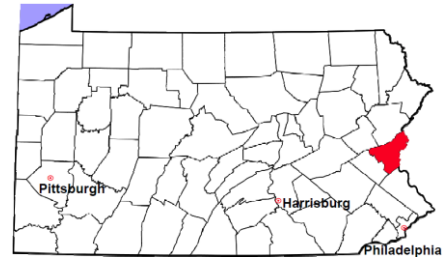
Note: Dependency data for 2002-2010 were collected manually. Dependency data for 2011 and 2012 were provided by CPCMS.

Northampton County

2012 Population Estimate: 299,267

Class of County: 3rd

No. of Common Pleas Court Judgeships: 9



2012 Juvenile Dependency - Adjudicated Dependent Inventory



| | Abuse/ Neglect | Status Offenses | Total | | | |
|---|-------------------|--------------------|------------|---------------|------------|---------------|
| Cases Pending 1/1/2012 | 259 | 17 | 276 | | | |
| New Adjudicated Dependent Cases | 89 | 3 | 92 | | | |
| Other | 8 | 0 | 8 | | | |
| Total Adjudicated Dependent Cases | 356 | 20 | 376 | | | |
| <u>Court Supervision Terminated:</u> | | | | | | |
| Family Reunification | 8 | 6.3% | 0 | 8 | 5.8% | |
| Adoption | 36 | 28.1% | 0 | 36 | 25.9% | |
| Placement with a Relative/Guardian | 58 | 45.3% | 6 | 54.5% | 64 | 46.0% |
| Aged Out | 6 | 4.7% | 3 | 27.3% | 9 | 6.5% |
| Other Permanency Outcomes* | 5 | 3.9% | 1 | 9.1% | 6 | 4.3% |
| Other** | 15 | 11.7% | 1 | 9.1% | 16 | 11.5% |
| Total Adjudicated Dependent Cases Terminated | 128 | 100.0% | 11 | 100.0% | 139 | 100.0% |
| Cases Pending 12/31/2012 | 228 | | 9 | | 237 | |

Data provided by CPCMS

* Other Permanency Outcomes include: adjudicated delinquent, death due to natural causes, death due to negligence, emancipation, permanent living arrangement, and parent has come forward.

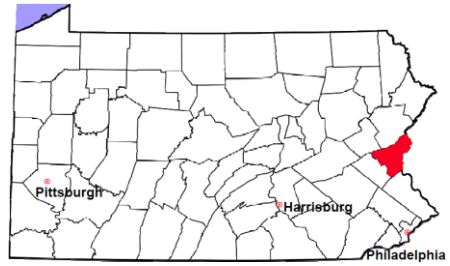
** Other includes cases where court supervision is terminated due to transfer out of jurisdiction, withdrawal and administrative closure.

Northampton County

2012 Population Estimate: 299,267

Class of County: 3rd

No. of Common Pleas Court Judgeships: 9



2012 Juvenile Delinquency

No. of Cases

Cases Pending 1/1/2012 **339**

New Cases Filed in 2012 **598**

Cases Available for Processing 937

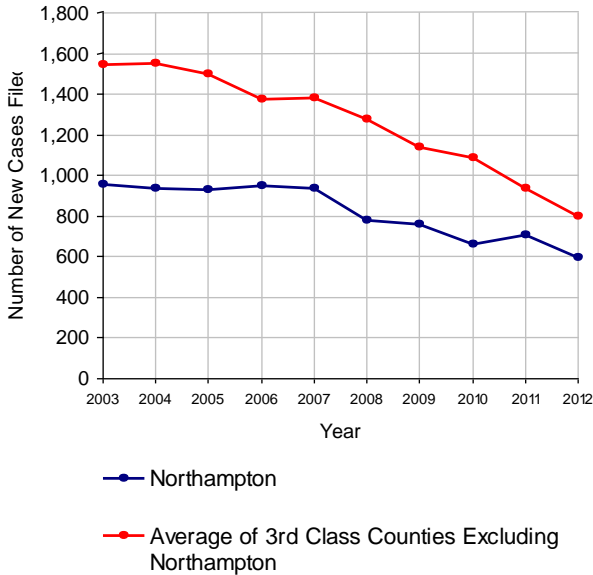
Processed By:

| | | |
|----------------------|-----|-------|
| Judge | 408 | 52.0% |
| Non-Judicial Officer | 356 | 45.4% |
| Other | 21 | 2.7% |

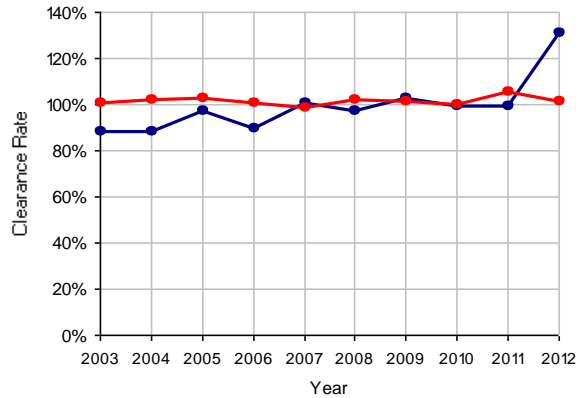
Cases Processed 785 100.0%

Cases Pending 12/31/2012 152

Juvenile Delinquency New Cases Filed, 2003-2012

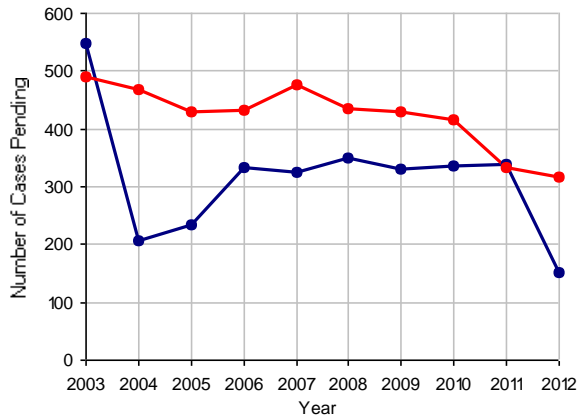


Clearance Rate, 2003-2012



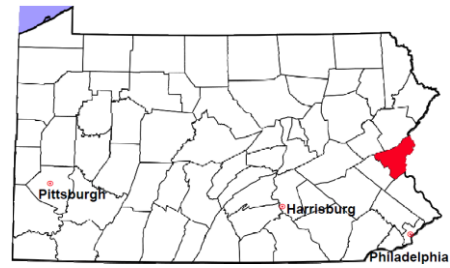
Note: Clearance Rate = Cases Processed / New Cases Filed

Cases Pending at the End of Year, 2003-2012



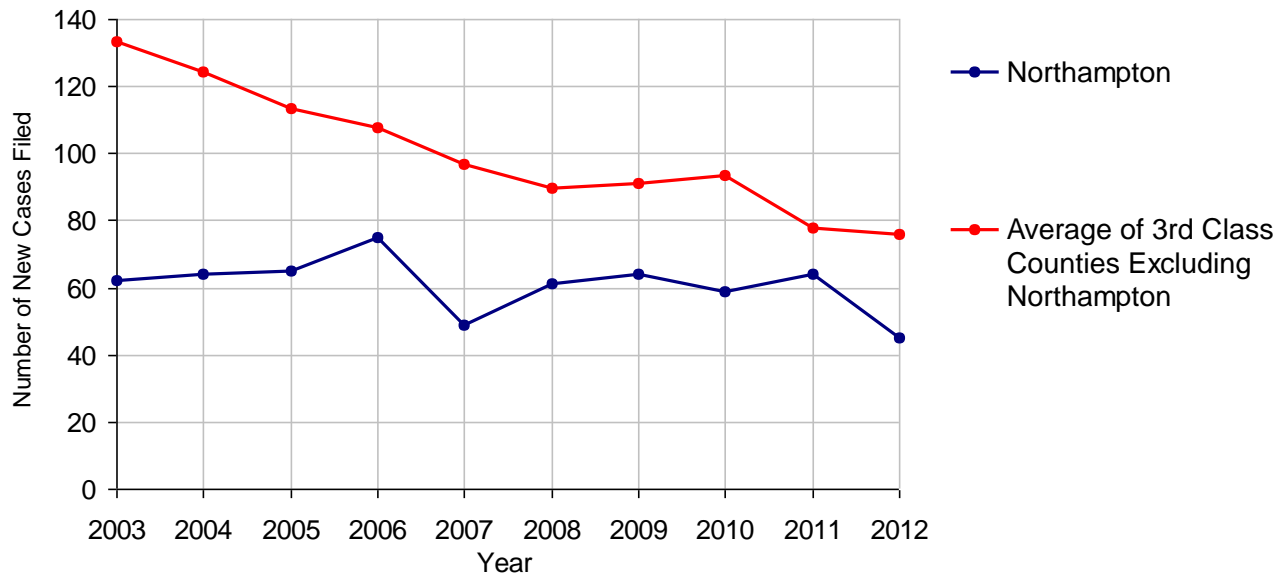
Northampton County

2012 Population Estimate: 299,267
 Class of County: 3rd
 No. of Common Pleas Court Judgeships: 9



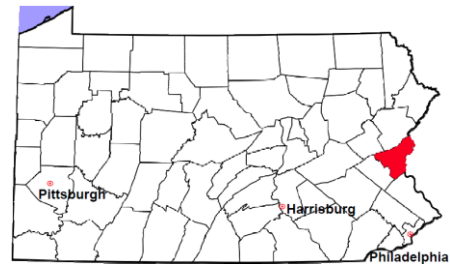
| 2012 Accounts | No. of Cases | |
|---|---------------------|---------------|
| Cases Pending 1/1/2012 | 15 | |
| New Cases Filed in 2012 | 45 | |
| Cases Available for Processing | 60 | |
| Processed By: | | |
| Contested before a Judge | 9 | 18.8% |
| Contested before a Non-judicial Officer | 0 | |
| Uncontested | 39 | 81.3% |
| Other | 0 | |
| Cases Processed | 48 | 100.0% |
| Cases Pending 12/31/2012 | 12 | |

Accounts New Cases Filed, 2003-2012



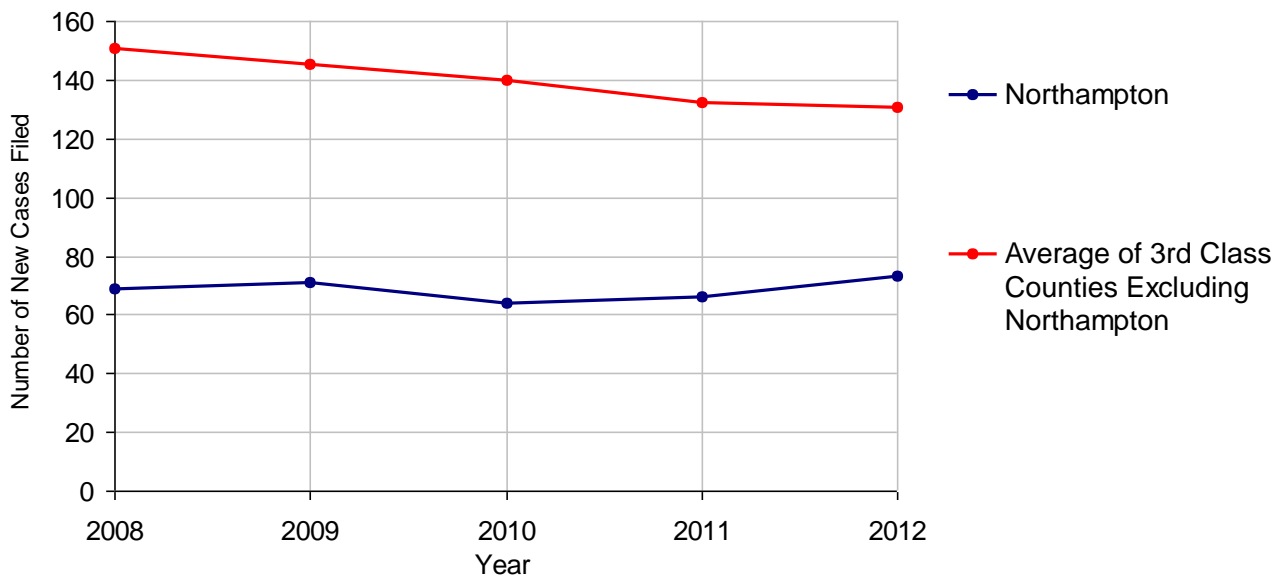
Northampton County

2012 Population Estimate: 299,267
 Class of County: 3rd
 No. of Common Pleas Court Judgeships: 9



| 2012 Adoptions | | No. of Cases | |
|---------------------------------------|---------|---------------------|---------------|
| Cases Pending 1/1/2012 | | 3 | |
| New Cases Filed in 2012 | | 73 | |
| Cases Available for Processing | | 76 | |
| Processed By: | | | |
| Contested before a Judge | Granted | 6 | 8.0% |
| | Denied | 0 | |
| Uncontested | Granted | 69 | 92.0% |
| | Denied | 0 | |
| Other | | 0 | |
| Cases Processed | | 75 | 100.0% |
| Cases Pending 12/31/2012 | | 1 | |

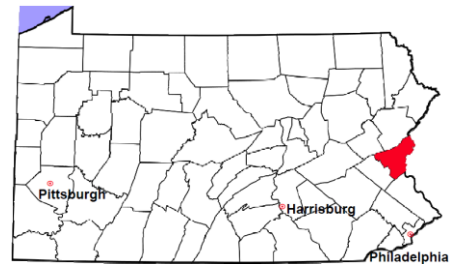
Adoptions New Cases Filed, 2008-2012



Note: Prior to 2008, each petition was counted as one new case, regardless of the number of children listed on the petition. Starting in 2008, each child listed on a petition is counted as a separate case. Therefore, statistics since 2008 should not be compared to statistics prior to 2008.

Northampton County

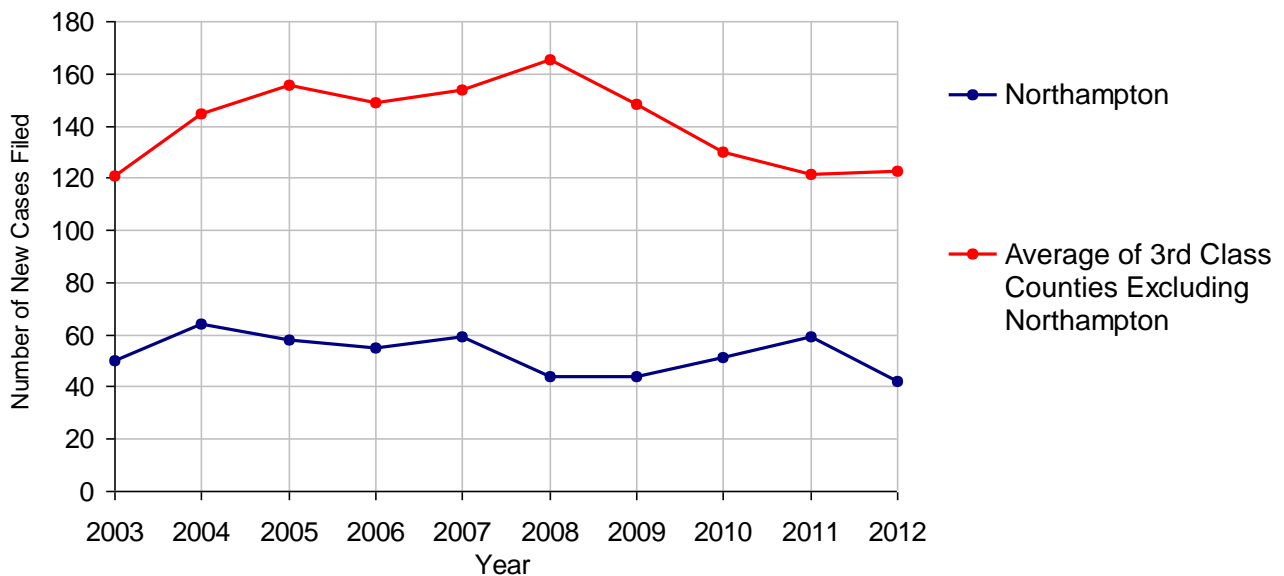
2012 Population Estimate: 299,267
 Class of County: 3rd
 No. of Common Pleas Court Judgeships: 9



2012 Relinquishments/Terminations

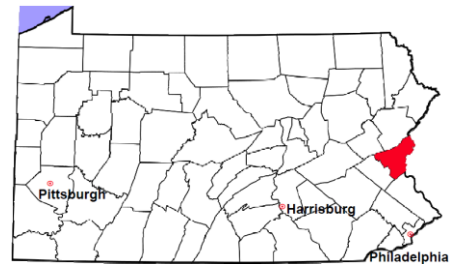
| | No. of Cases |
|---------------------------------------|---------------------|
| Cases Pending 1/1/2012 | 8 |
| New Cases Filed in 2012 | 42 |
| Cases Available for Processing | 50 |
| Processed By: | |
| Contested before a Judge | 14 30.4% |
| Uncontested | 30 65.2% |
| Other | 2 4.3% |
| Cases Processed | 46 100.0% |
| Cases Pending 12/31/2012 | 4 |

Relinquishments/Terminations New Cases Filed, 2003-2012



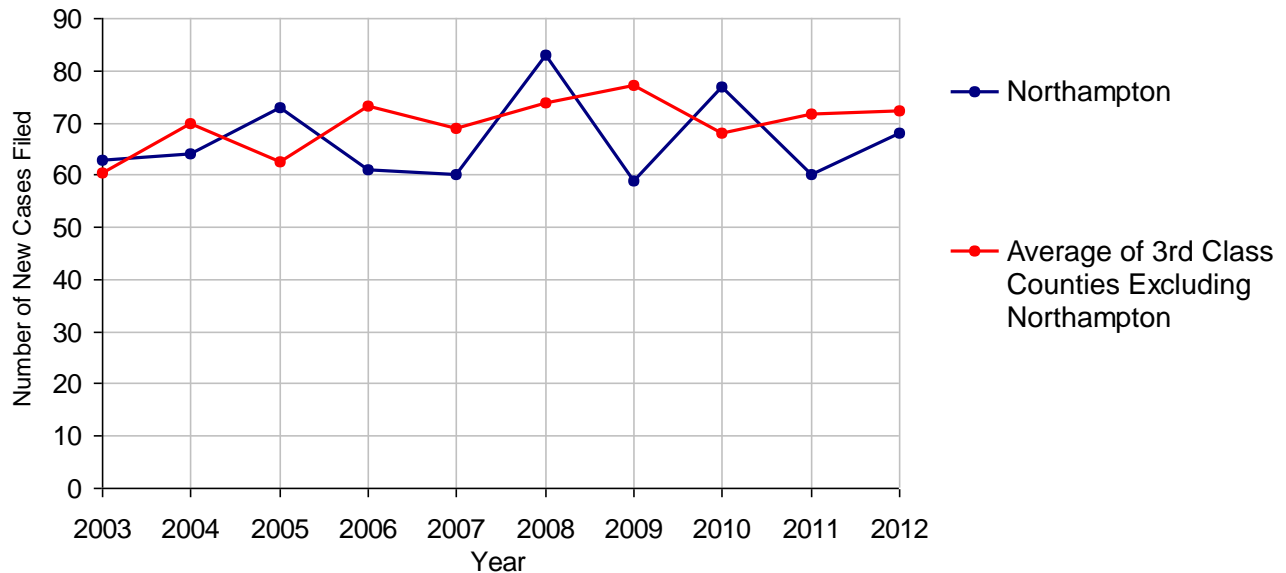
Northampton County

2012 Population Estimate: 299,267
 Class of County: 3rd
 No. of Common Pleas Court Judgeships: 9



| 2012 Appointment of Guardians | | No. of Cases |
|---------------------------------------|-----------|---------------------|
| Cases Pending 1/1/2012 | | 10 |
| New Cases Filed in 2012 | | 68 |
| Cases Available for Processing | | 78 |
| Processed By: | | |
| Contested before a Judge | 17 | 23.0% |
| Uncontested | 47 | 63.5% |
| Other | 10 | 13.5% |
| Cases Processed | 74 | 100.0% |
| Cases Pending 12/31/2012 | | 4 |

Appointment of Guardians New Cases Filed, 2003-2012



Northampton County

2012 Population Estimate: 299,267
 Class of County: 3rd
 No. of Common Pleas Court Judgeships: 9



2012 Jury Yield and Utilization

Jury Yield

| | | | | |
|--|--------------|----------|--------------|---|
| Qualification Questionnaires/Summonses Mailed: | 17,873 | A | | |
| Returned Undeliverable: | 2,527 | B | 14.1% | Of Qualification Questionnaires/ Summonses Mailed |
| Not Responded to: | 1,063 | C | 5.9% | |
| the Number of Prospective Jurors: | | | | |
| Disqualified: | 3,226 | D | 18.0% | |
| Exempted: | 172 | E | 1.0% | |
| Excused: | 3,298 | F | 18.5% | |
| Deferred to New Term: | 759 | G | 4.2% | |
| Deferred from Previous Term: | 887 | H | 5.0% | |
| Total Number of Qualified Jurors Available for Service: | 7,715 | I | 43.2% | |

I=A-B-C-D-E-F-G+H

Jury Utilization

| | | | | |
|---|-------|--|-------|-----------------------------------|
| the Number of Jurors: | | | | |
| Reporting for Service: | 2,808 | | 36.4% | Of Jurors Qualified and Available |
| Told Not to Report for Service: | 4,203 | | 54.5% | |
| Sent to Courtroom for Jury Selection (Voir Dire): | 1,494 | | 53.2% | Of Jurors Reporting for Service |
| Impanelled or Sworn (jurors/alternates): | 463 | | 16.5% | |
| Removed for Cause/Hardship: | 281 | | | |
| Removed by Peremptory Challenge: | 403 | | | |

Jury Costs

| | | |
|---|--------------|---|
| Total Annual Budget for Juror Operations: | \$185,324.00 | J |
| Average Cost Per Juror: | \$10.37 | K |

K=J/A

In mid-2011, AOPC began utilizing the National Center for State Courts' Jury Managers' Toolbox for collecting jury data. In 2012, the counties began providing additional jury data which included information about the summoning practices in the counties. With this additional data, we can now see not only how many citizens come to our courthouses every day in anticipation of serving on a jury, but the number of citizens actually summonsed and the number of those summonsed who are exempt, excused or disqualified from service. With this wider view of the jury process, we can determine the efficiency with which our courts operate, and with the assistance of the Jury Managers' Toolbox find guidance in streamlining the jury summoning practices.