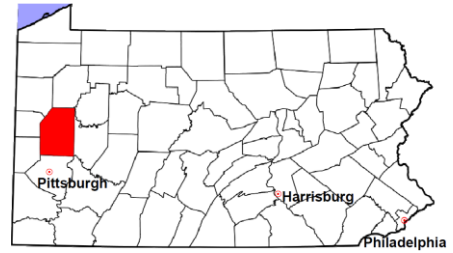


Butler County

2012 Population Estimate: 184,970
 Class of County: 4th
 No. of Common Pleas Court Judgeships: 6



2012 Criminal No. of Cases

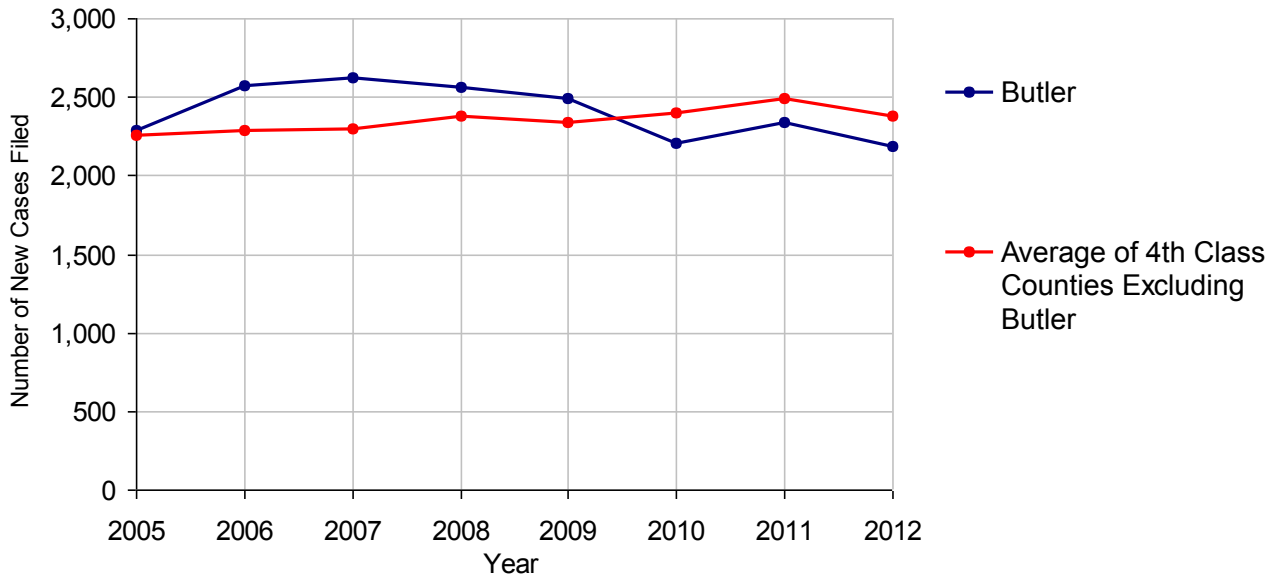
Cases Pending 1/1/2012	1,055	
New Cases Filed in 2012	2,187	
Reopened Cases	123	
Cases Available for Disposition	3,365	
Disposed by:		
Withdrawn/Dismissed	148	6.0%
ARD	513	20.8%
Guilty Plea	1,659	67.2%
Non-Jury Trial	8	0.3%
Jury Trial	8	0.3%
Inactive	88	3.6%
Other	45	1.8%
Total Cases Disposed	2,469	100.0%
Cases Pending 12/31/2012	896	
Cases Awaiting Sentencing	233	



Age of Pending Cases as of 12/31/2012		
0-60 Days	308	34.4%
61-120 Days	262	29.2%
121-180 Days	125	14.0%
181-240 Days	81	9.0%
241-300 Days	40	4.5%
301-360 Days	36	4.0%
Over 360 Days	44	4.9%
Total	896	100.0%

Data provided by CPCMS

Criminal New Cases Filed, 2005-2012

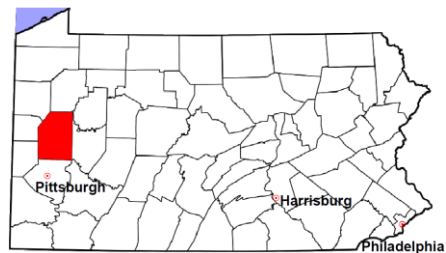


Butler County

2012 Population Estimate: 184,970

Class of County: 4th

No. of Common Pleas Court Judgeships: 6



2012 Criminal - New Cases by Case Type

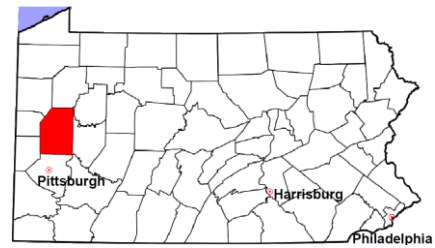


Case Type	Felony	Misdemeanor	Summary /Ungraded	Total
Person	112	223	0	335
Property	318	345	0	663
Drug	183	208	0	391
Weapon	7	6	0	13
Public Order	43	86	0	129
Motor Vehicle - DWI/DUI	0	653	0	653
Motor Vehicle - Other	0	3	0	3
Other	0	0	0	0
Total	663	1,524	0	2,187
	30.3%	69.7%		100.0%

Data provided by CPCMS

Butler County

2012 Population Estimate: 184,970
 Class of County: 4th
 No. of Common Pleas Court Judgeships: 6

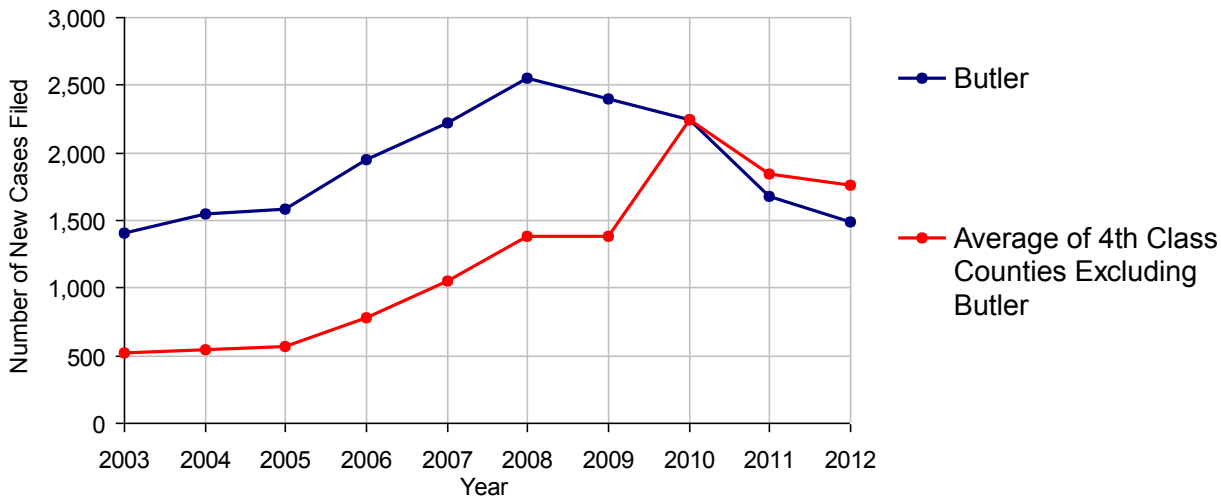


2012 Civil	Civil Action	Other	Total
Cases Pending 1/1/2012	1,019	599	1,618 (R)
Docketed Cases	983	502	1,485
Arbitration Appeals	0	0	0
Transferred In	1	0	1
Returned to Active	0	0	0
Cases Available for Processing	2,003	1,101	3,104
Disposed By:			
Default Judgments	324	208	532
Cases Decided by Arbitration Board	0	0	0
Dispositive Motions	4	0	4
Settlements	442	171	613
Moved to Inactive Status	1	1	2
Transferred/Withdrawn	3	2	5
Administrative Purge	33	22	55
Other	15	32	47
Jury Trial	15	4	19
Non-Jury Trial	3	1	4
Total Cases Disposed	840	441	1,281
Cases Pending 12/31/2012	1,163	660	1,823

Age of Pending Cases as of 12/31/2012 (Civil Action Only)		
0-6 months	373	32.1%
7-12 months	238	20.5%
13-18 months	185	15.9%
19-24 months	164	14.1%
25-30 months	166	14.3%
31-36 months	19	1.6%
37-42 months	15	1.3%
43-48 months	0	
49-54 months	0	
55-60 months	1	0.1%
61-66 months	0	
67-72 months	0	
Over 72 months	2	0.2%
Total	1,163	100.0%

(R) - Revised

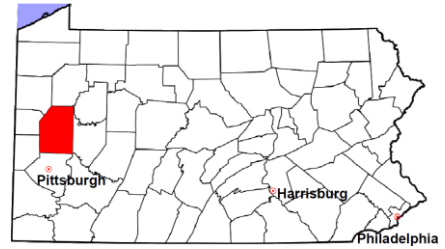
Docketed Cases, 2003-2012



Note: Prior to June 2010, docketed cases under the "Other" category were not reported. The inclusion of these cases starting from June 2010 may contribute to an increase in docketed cases from 2009 to 2010.

Butler County

2012 Population Estimate: 184,970
 Class of County: 4th
 No. of Common Pleas Court Judgeships: 6



2012 Civil - Docketed Cases Listed by Case Type

TORT	189	12.7%
<i>(does not include mass tort)</i>		
Intentional	8	
Malicious Prosecution	2	
Motor Vehicle	104	
Nuisance	0	
Premise Liability	30	
Product Liability	1	
Slander/Libel/Defamation	5	
Other	39	
MASS TORT	1	0.1%
Asbestos	0	
Tobacco	0	
Toxic Tort - DES	0	
Toxic Tort - Implant	0	
Toxic Waste	0	
Other	1	
PROFESSIONAL LIABILITY	14	0.9%
Dental	2	
Legal	4	
Medical Malpractice	7	
Other	1	
CONTRACT	738	49.7%
<i>(does not include judgments)</i>		
Buyer Plaintiff	25	
Debt Collection: Credit Card	474	
Debt Collection: Other	134	
Employment Dispute:		
Employment Dispute: Discriminatio	2	
Employment Dispute: Other	8	
Other	95	

REAL PROPERTY	419	28.2%
Ejectment*	31	
Eminent Domain/Condemnation	9	
Ground Rent	0	
Landlord/Tenant Dispute	41	
Mortgage Foreclosure:		
Residential*	269	
Commercial*	8	
Partition of Real Property*	2	
Quiet Title*	30	
Other*	29	
CIVIL APPEALS	48	3.2%
<i>- Administrative Agencies</i>		
Board of Assessment*	2	
Board of Elections*	0	
Dept. of Transportation*	38	
Zoning Board*	2	
Statutory Appeal - Other*	2	
Other*	4	
MISCELLANEOUS	76	5.1%
Common Law/		
Statutory Arbitration*	0	
Declaratory Judgment*	15	
Mandamus*	2	
Non-Domestic Relations		
Restraining Order*	0	
Quo Warranto*	0	
Replevin*	10	
Other*	49	
TOTAL DOCKETED CASES:	1,485	100%

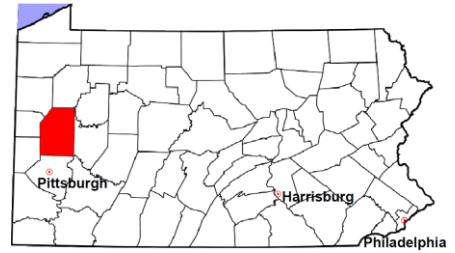
Of the Docketed Cases:

Pro Se Filings: 62 4.2% Class Action Suits: 3 0.2% MDJ Appeals: 109 7.3%

* Civil Other

Butler County

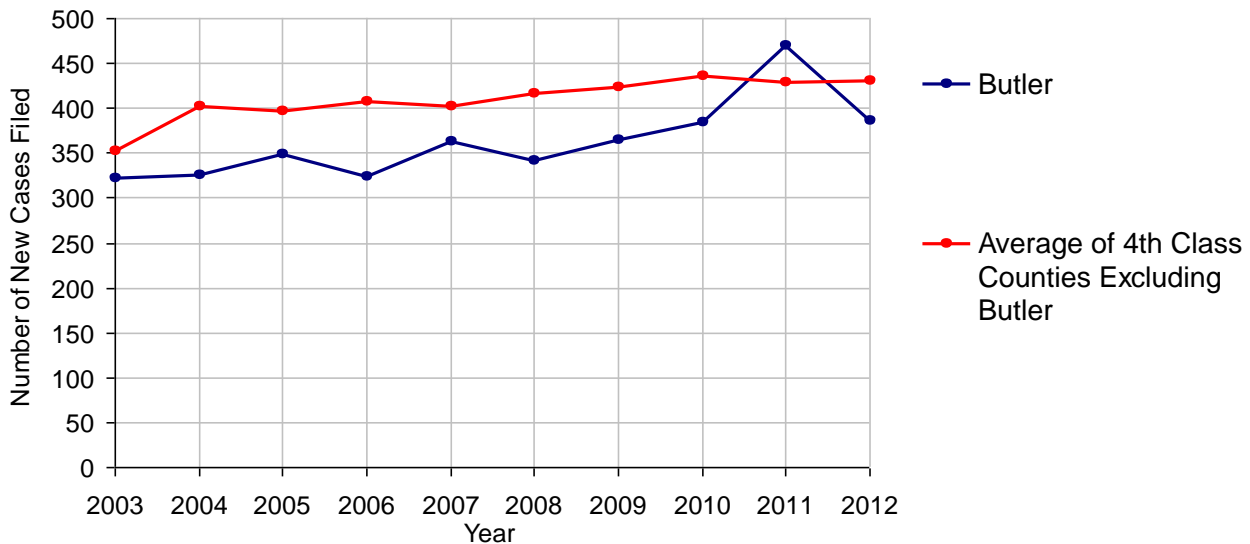
2012 Population Estimate: 184,970
 Class of County: 4th
 No. of Common Pleas Court Judgeships: 6



2012 Protection From Abuse

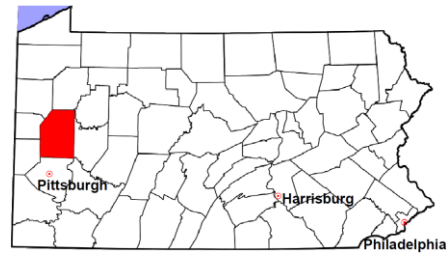
	No. of Petitions
Cases Pending 1/1/2012	79
New Cases Filed in 2012	387
<i>Of these, Petitions Requesting Temporary Orders: 387 (100.0%)</i>	
<i>Temporary Orders DENIED: 36 (9.3%), Temporary Orders GRANTED: 351 (90.7%)</i>	
Cases Available for Processing	466
Processed By:	
Temporary Order DENIED After Ex Parte Hearing and No Evidentiary Hearing Scheduled	36 8.7%
Temporary Order DISMISSED After Evidentiary Hearing and No Final Order Entered	121 29.1%
Final Order DENIED After Evidentiary Hearing Before a Judge	13 3.1%
Final Order GRANTED After Evidentiary Hearing Before a Judge	52 12.5%
Plaintiff Did Not Appear For Evidentiary Hearing	42 10.1%
Final Order by STIPULATION OR AGREEMENT Between the Parties	88 21.2%
Petition WITHDRAWN by Plaintiff	56 13.5%
TRANSFERRED to Another Jurisdiction	0
DECEASED Party	0
Other	8 1.9%
Cases Processed	416 100.0%
Cases Pending 12/31/2012	50

PFA New Cases Filed, 2003-2012



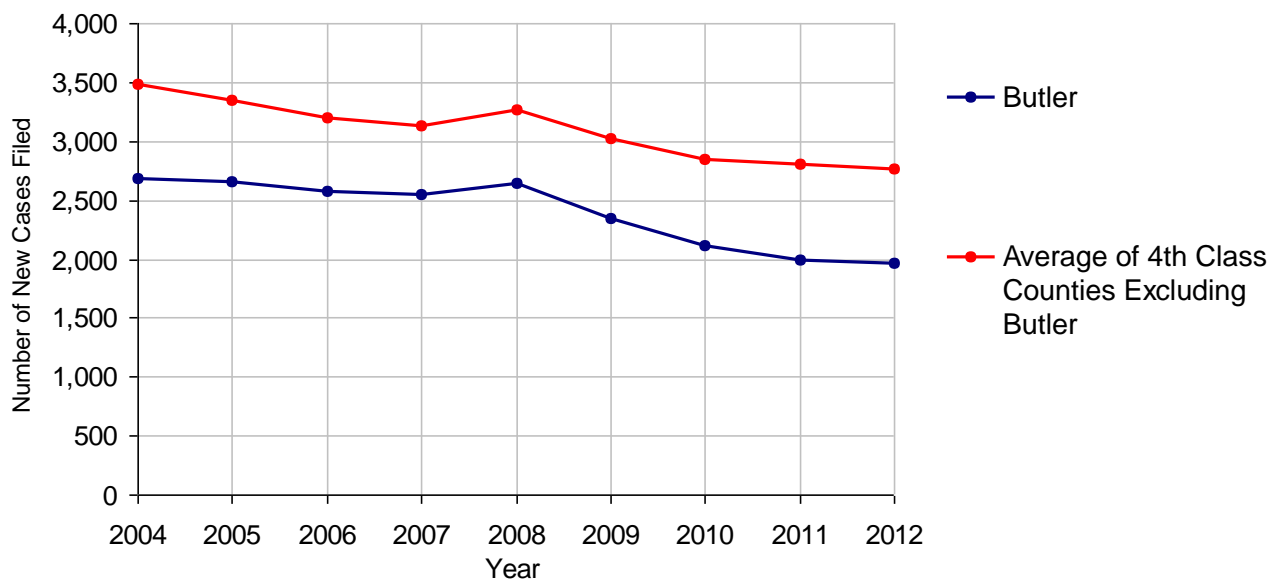
Butler County

2012 Population Estimate: 184,970
 Class of County: 4th
 No. of Common Pleas Court Judgeships: 6



2012 Spousal & Child Support	No. of Petitions	
Cases Pending 1/1/2012	450	
New Cases Filed in 2012	1,972	
Dockets Transferred In (+)	19	
Dockets Transferred Out (-)	22	
Cases Available for Processing	2,419	
Processed By:		
Judge	183	8.9%
Intake Officer	1,871	91.1%
Hearing Officer	0	
Other	0	
Cases Processed	2,054	100.0%
Cases Pending 12/31/2012	365	

Spousal & Child Support New Cases Filed, 2004-2012

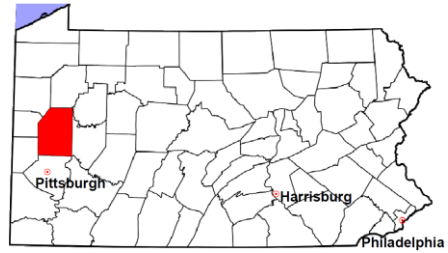


Butler County

2012 Population Estimate: 184,970

Class of County: 4th

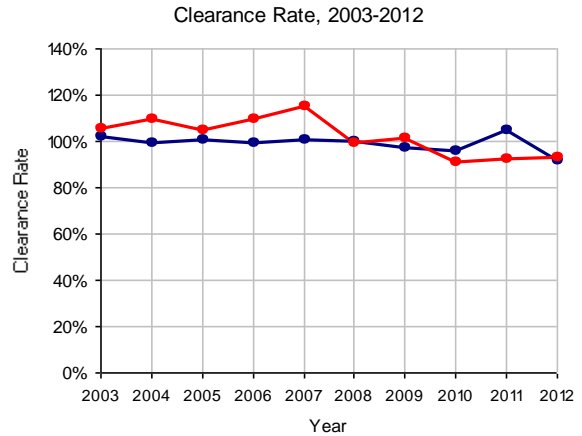
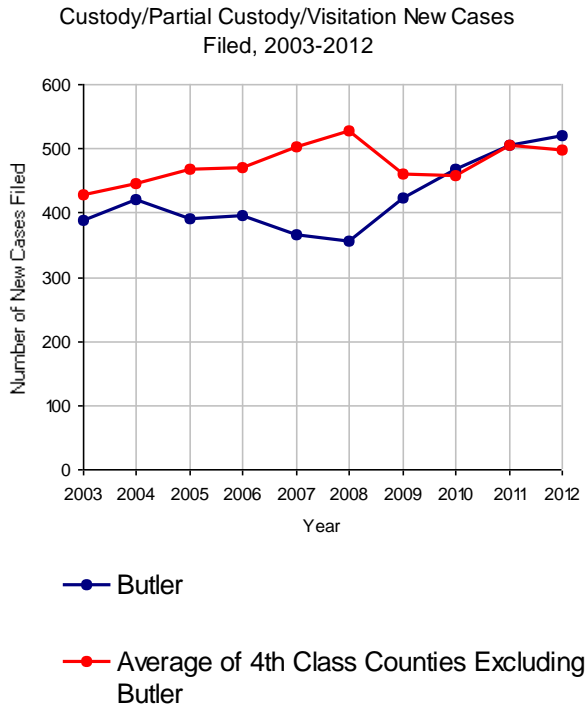
No. of Common Pleas Court Judgeships: 6



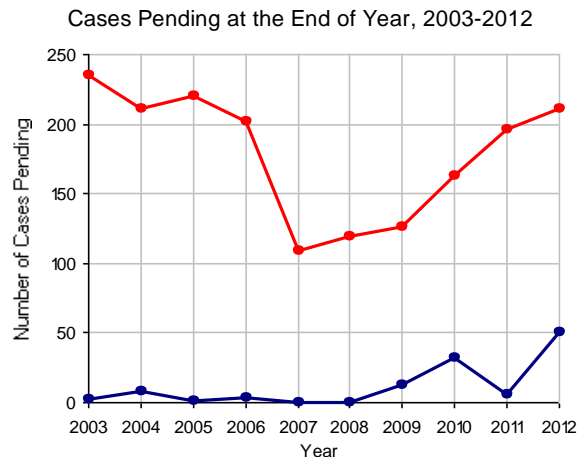
2012 Custody/Partial Custody/Visitation

No. of
Petitions

Cases Pending 1/1/2012	6
New Cases Filed in 2012	520
Cases Available for Processing	526
Processed By:	
Judge	28 5.9%
Non-Judicial Officer	400 84.0%
Other	48 10.1%
Cases Processed	476 100.0%
Cases Pending 12/31/2012	50

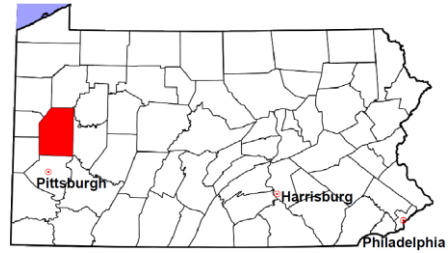


Note: Clearance Rate = Cases Processed / New Cases Filed



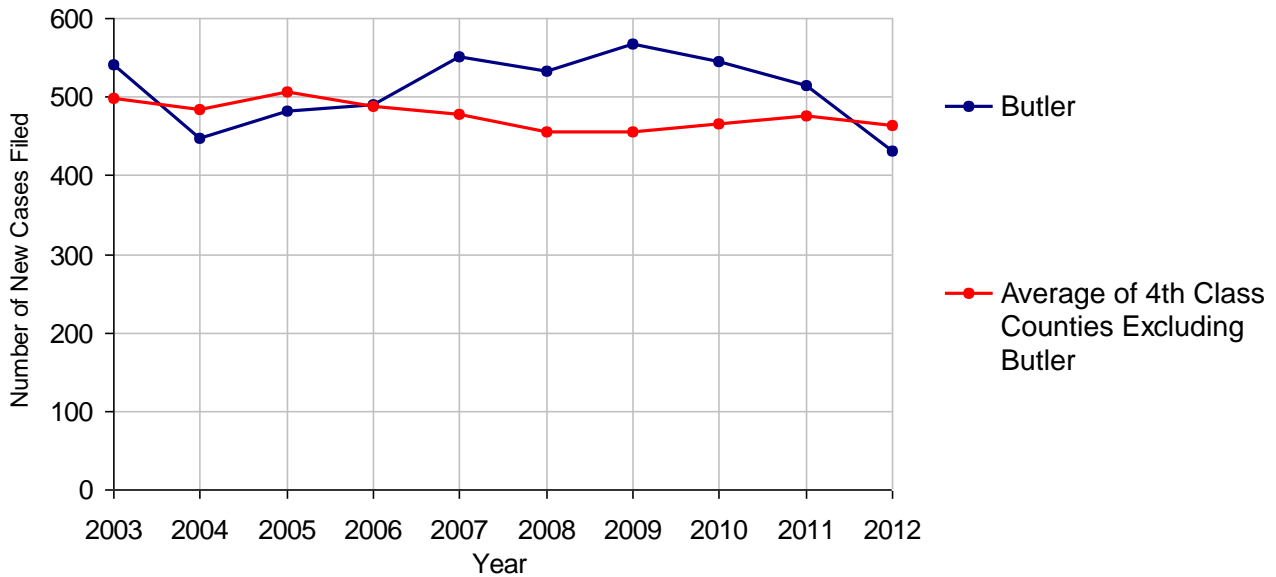
Butler County

2012 Population Estimate: 184,970
 Class of County: 4th
 No. of Common Pleas Court Judgeships: 6



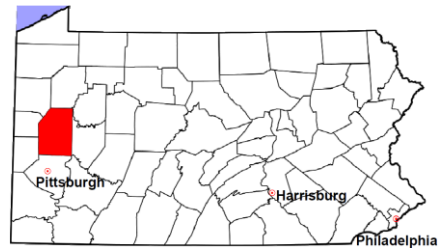
2012 Divorce	No. of Petitions	
Cases Pending 1/1/2012	1,938	
New Cases Filed in 2012	431	
Cases Available for Processing	2,369	
Processed By:		
Contested Before a Judge	11	1.0%
Contested Before a Master	0	
Uncontested	468	41.9%
Other	638	57.1%
Cases Processed	1,117	100.0%
Cases Pending 12/31/2012	1,252	

Divorce New Cases Filed, 2003-2012



Butler County

2012 Population Estimate: 184,970
 Class of County: 4th
 No. of Common Pleas Court Judgeships: 6



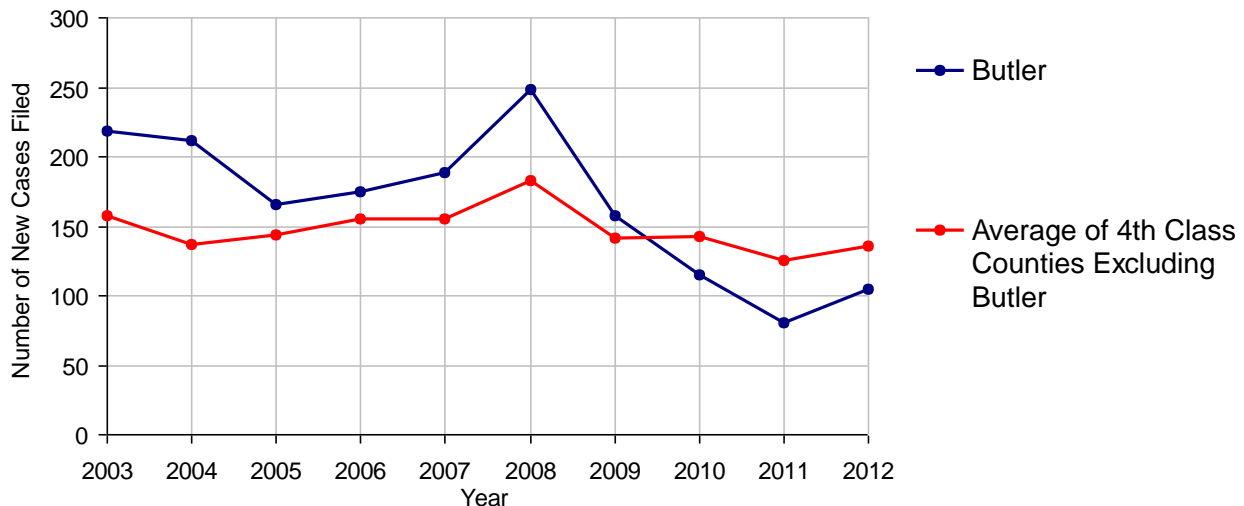
2012 Juvenile Dependency - Active Dependent Inventory



	Abuse/ Neglect	Status Offenses	Total
Cases Pending 1/1/2012	7	1	8
New Petitions Filed in 2012	103	2	105
Other	5	0	5
Total Petitions Available for Processing	115	3	118
Processed by:			
Adjudicated Dependent			
Judge	4	0	4
Master	77	0	77
Adjudicated NOT Dependent			
Judge	0	0	0
Master	9	0	9
Withdrawn/Dismissed/Inactive	13	2	15
Other	7	1	8
Total Petitions Processed	110	3	113
Cases Pending 12/31/2012	5	0	5

Data provided by CPCMS

Abuse/Neglect and Status Offenses New Cases Filed, 2003-2012



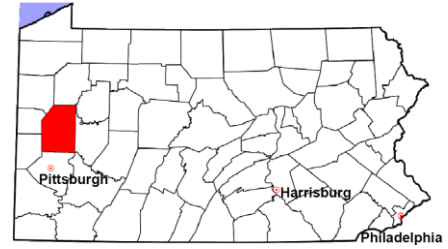
Note: Dependency data for 2002-2010 were collected manually. Dependency data for 2011 and 2012 were provided by CPCMS.

Butler County

2012 Population Estimate: 184,970

Class of County: 4th

No. of Common Pleas Court Judgeships: 6



2012 Juvenile Dependency - Adjudicated Dependent Inventory



	Abuse/ Neglect	Status Offenses	Total
Cases Pending 1/1/2012	109	7	116
New Adjudicated Dependent Cases	81	0	81
Other	5	0	5
Total Adjudicated Dependent Cases	195	7	202

Court Supervision Terminated:

Family Reunification	23	32.4%	3	50.0%	26	33.8%
Adoption	19	26.8%	0		19	24.7%
Placement with a Relative/Guardian	15	21.1%	2	33.3%	17	22.1%
Aged Out	5	7.0%	1	16.7%	6	7.8%
Other Permanency Outcomes*	3	4.2%	0		3	3.9%
Other**	6	8.5%	0		6	7.8%
Total Adjudicated Dependent Cases Terminated	71	100.0%	6	100.0%	77	100.0%
Cases Pending 12/31/2012	124		1		125	

Data provided by CPCMS

* Other Permanency Outcomes include: adjudicated delinquent, death due to natural causes, death due to negligence, emancipation, permanent living arrangement, and parent has come forward.

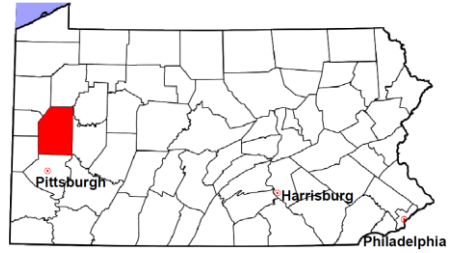
** Other includes cases where court supervision is terminated due to transfer out of jurisdiction, withdrawal and administrative closure.

Butler County

2012 Population Estimate: 184,970

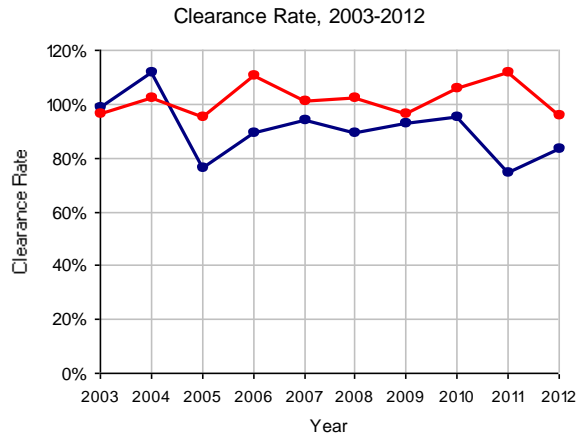
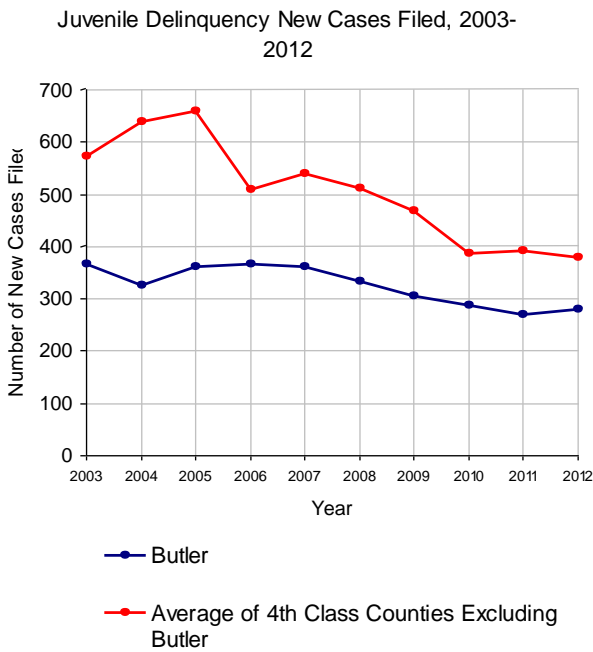
Class of County: 4th

No. of Common Pleas Court Judgeships: 6

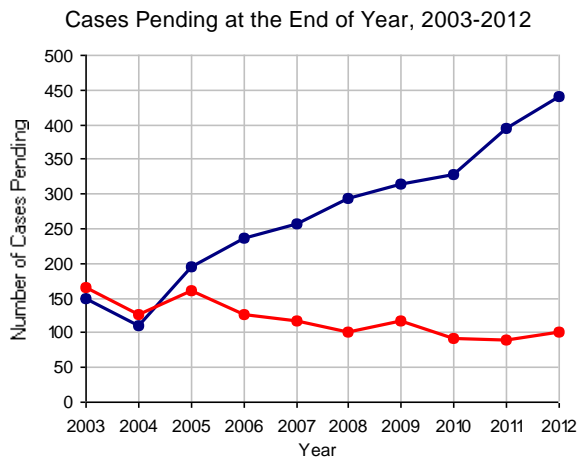


2012 Juvenile Delinquency

	No. of Cases	
Cases Pending 1/1/2012	395	
New Cases Filed in 2012	281	
Cases Available for Processing	676	
Processed By:		
Judge	79	33.6%
Non-Judicial Officer	156	66.4%
Other	0	
Cases Processed	235	100.0%
Cases Pending 12/31/2012	441	

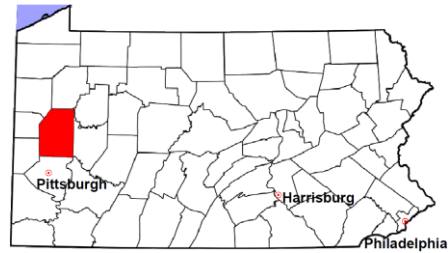


Note: Clearance Rate = Cases Processed / New Cases Filed



Butler County

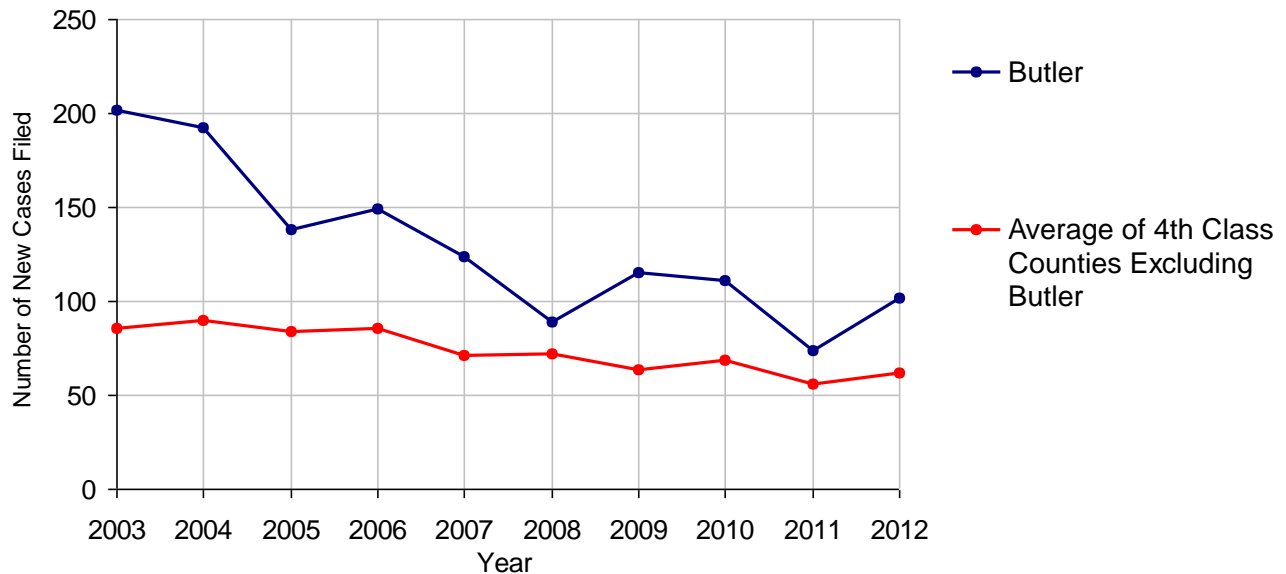
2012 Population Estimate: 184,970
 Class of County: 4th
 No. of Common Pleas Court Judgeships: 6



2012 Accounts

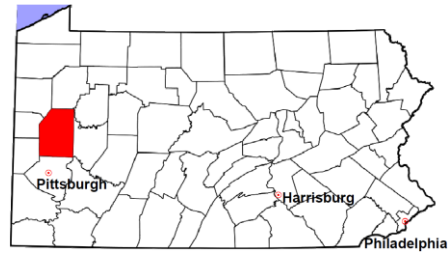
	No. of Cases	
Cases Pending 1/1/2012	23	
New Cases Filed in 2012	102	
Cases Available for Processing	125	
Processed By:		
Contested before a Judge	0	
Contested before a Non-judicial Officer	1	1.2%
Uncontested	80	98.8%
Other	0	
Cases Processed	81	100.0%
Cases Pending 12/31/2012	44	

Accounts New Cases Filed, 2003-2012



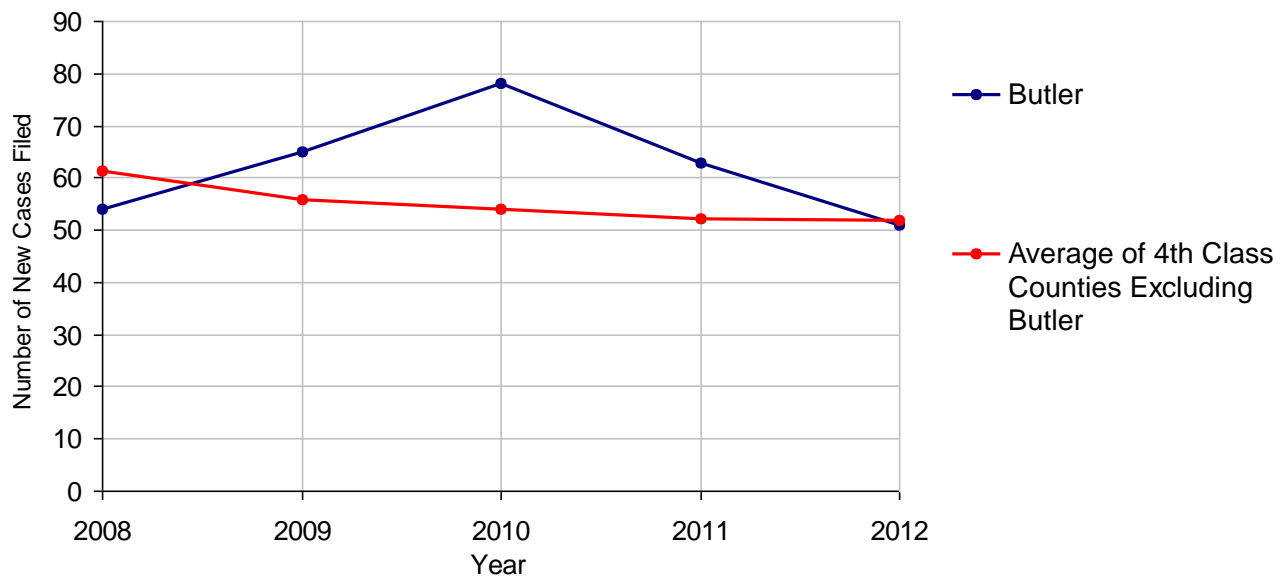
Butler County

2012 Population Estimate: 184,970
 Class of County: 4th
 No. of Common Pleas Court Judgeships: 6



2012 Adoptions		No. of Cases	
Cases Pending 1/1/2012		25	
New Cases Filed in 2012		51	
Cases Available for Processing		76	
Processed By:			
Contested before a Judge	Granted	0	
	Denied	0	
Uncontested	Granted	51	81.0%
	Denied	0	
Other		12	19.0%
Cases Processed		63	100.0%
Cases Pending 12/31/2012		13	

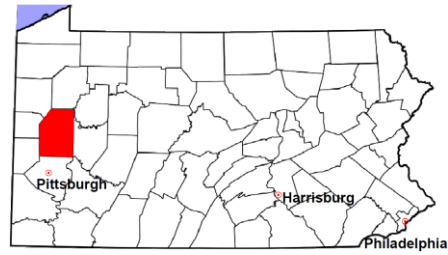
Adoptions New Cases Filed, 2008-2012



Note: Prior to 2008, each petition was counted as one new case, regardless of the number of children listed on the petition. Starting in 2008, each child listed on a petition is counted as a separate case. Therefore, statistics since 2008 should not be compared to statistics prior to 2008.

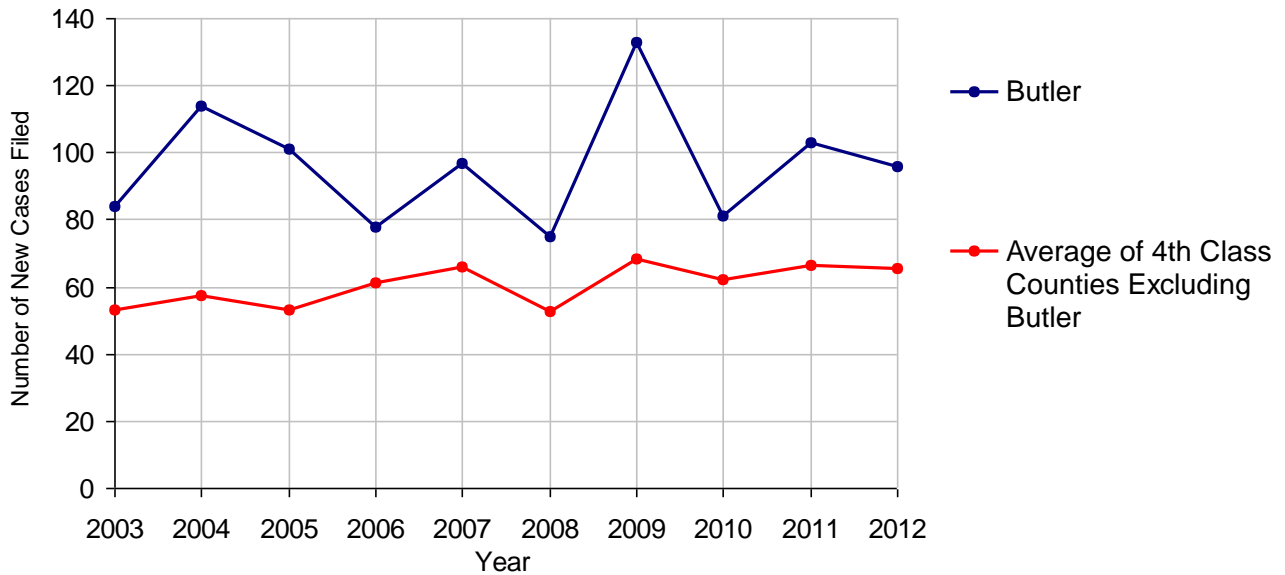
Butler County

2012 Population Estimate: 184,970
 Class of County: 4th
 No. of Common Pleas Court Judgeships: 6



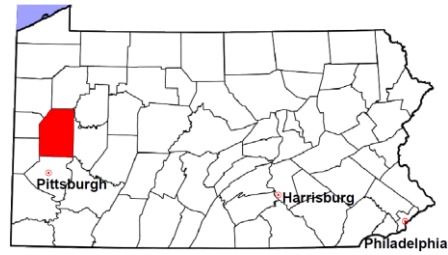
2012 Relinquishments/Terminations		No. of Cases
Cases Pending 1/1/2012		54
New Cases Filed in 2012		96
Cases Available for Processing		150
Processed By:		
Contested before a Judge	1	1.0%
Uncontested	75	75.0%
Other	24	24.0%
Cases Processed	100	100.0%
Cases Pending 12/31/2012		50

Relinquishments/Terminations New Cases Filed, 2003-2012



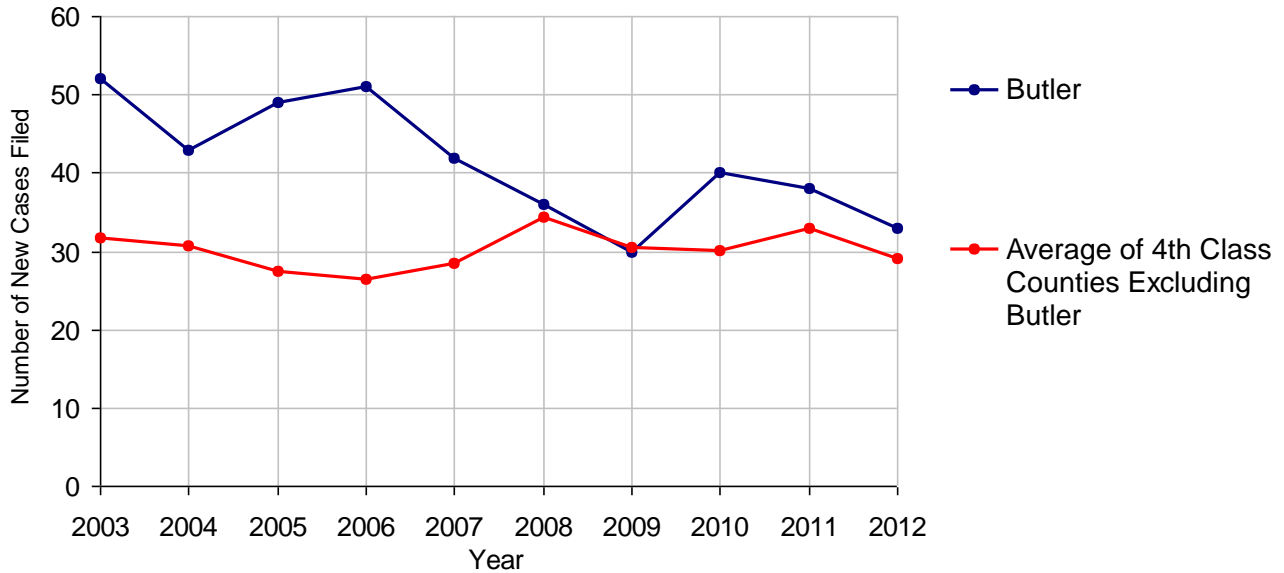
Butler County

2012 Population Estimate: 184,970
 Class of County: 4th
 No. of Common Pleas Court Judgeships: 6



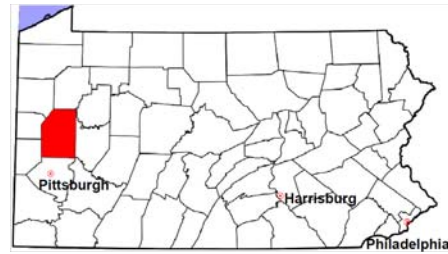
2012 Appointment of Guardians		No. of Cases
Cases Pending 1/1/2012		21
New Cases Filed in 2012		33
Cases Available for Processing		54
Processed By:		
Contested before a Judge		0
Uncontested	34	85.0%
Other	6	15.0%
Cases Processed	40	100.0%
Cases Pending 12/31/2012		14

Appointment of Guardians New Cases Filed, 2003-2012



Butler County

2012 Population Estimate: 184,970
 Class of County: 4th
 No. of Common Pleas Court Judgeships: 6



2012 Jury Yield and Utilization

Jury Yield

Qualification Questionnaires/Summonses Mailed:	5,442	A		
Returned Undeliverable:	8	B	0.1%	Of Qualification Questionnaires/Summonses Mailed
Not Responded to:	0	C		
the Number of Prospective Jurors:				
Disqualified:	40	D	0.7%	
Exempted:	3	E	0.1%	
Excused:	313	F	5.8%	
Deferred to New Term:	916	G	16.8%	
Deferred from Previous Term:	403	H	7.4%	
Total Number of Qualified Jurors Available for Service:	4,565	I	83.9%	

$I = A - B - C - D - E - F - G + H$

Jury Utilization

the Number of Jurors:			
Reporting for Service:	2,152	47.1%	Of Jurors Qualified and Available
Told Not to Report for Service:	1,447	31.7%	
Sent to Courtroom for Jury Selection (Voir Dire):	995	46.2%	Of Jurors Reporting for Service
Impanelled or Sworn (jurors/alternates):	308	14.3%	
Removed for Cause/Hardship:	182		
Removed by Peremptory Challenge:	277		

Jury Costs

Total Annual Budget for Juror Operations:	\$114,443.00	J
Average Cost Per Juror:	\$21.03	K

$K = J/A$

In mid-2011, AOPC began utilizing the National Center for State Courts' Jury Managers' Toolbox for collecting jury data. In 2012, the counties began providing additional jury data which included information about the summoning practices in the counties. With this additional data, we can now see not only how many citizens come to our courthouses every day in anticipation of serving on a jury, but the number of citizens actually summonsed and the number of those summonsed who are exempt, excused or disqualified from service. With this wider view of the jury process, we can determine the efficiency with which our courts operate, and with the assistance of the Jury Managers' Toolbox find guidance in streamlining the jury summoning practices.