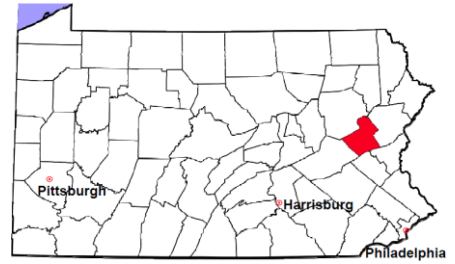


Carbon County

2012 Population Estimate: 65,006

Class of County: 6th

No. of Common Pleas Court Judgeships: 3



2012 Criminal	No. of Cases
---------------	--------------

Cases Pending 1/1/2012	536
New Cases Filed in 2012	1,159
Reopened Cases	99
Cases Available for Disposition	1,794

Disposed by:

Withdrawn/Dismissed	33	2.7%
ARD	279	22.6%
Guilty Plea	837	67.9%
Non-Jury Trial	2	0.2%
Jury Trial	11	0.9%
Inactive	30	2.4%
Other	40	3.2%
Total Cases Disposed	1,232	100.0%

Cases Pending 12/31/2012	562
Cases Awaiting Sentencing	73

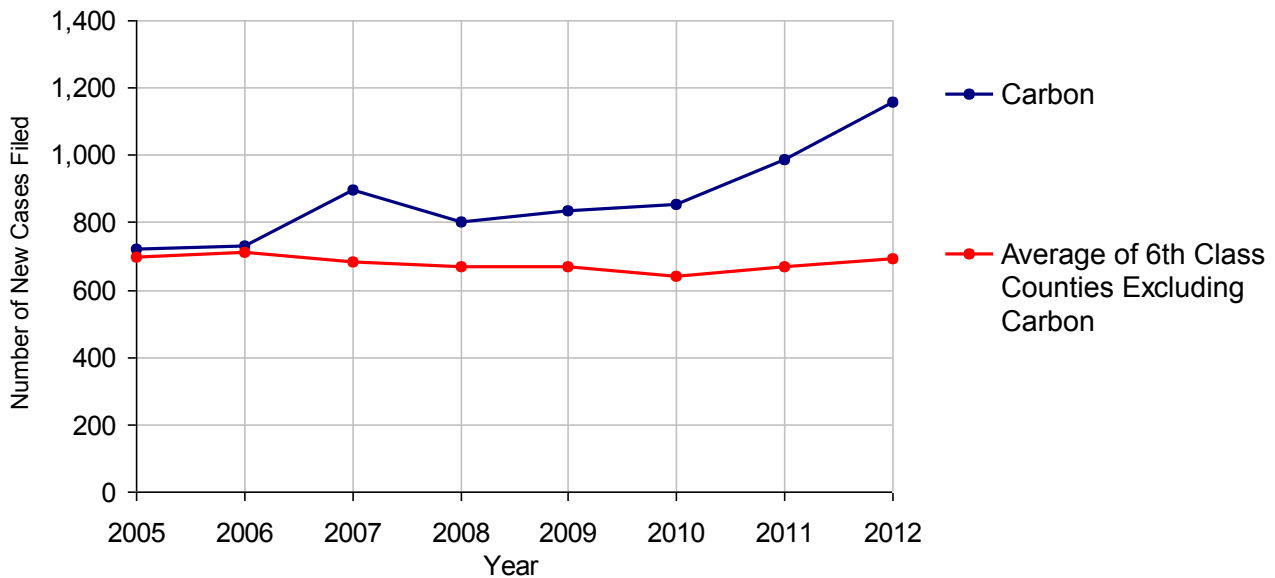
Data provided by CPCMS



Age of Pending Cases as of 12/31/2012

0-60 Days	164	29.2%
61-120 Days	125	22.2%
121-180 Days	91	16.2%
181-240 Days	28	5.0%
241-300 Days	33	5.9%
301-360 Days	36	6.4%
Over 360 Days	85	15.1%
Total	562	100.0%

Criminal New Cases Filed, 2005-2012

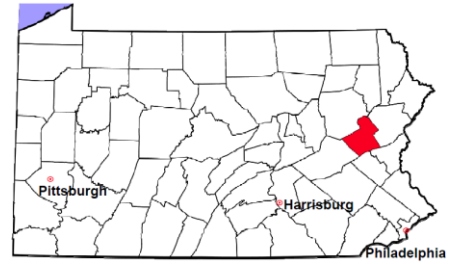


Carbon County

2012 Population Estimate: 65,006

Class of County: 6th

No. of Common Pleas Court Judgeships: 3



2012 Criminal - New Cases by Case Type



Case Type	Felony	Misdemeanor	Summary /Ungraded	Total
Person	69	101	0	170
Property	118	159	0	277
Drug	82	118	0	200
Weapon	3	2	0	5
Public Order	22	79	1	102
Motor Vehicle - DWI/DUI	0	402	0	402
Motor Vehicle - Other	0	3	0	3
Other	0	0	0	0
Total	294	864	1	1,159
	25.4%	74.5%	0.1%	100.0%

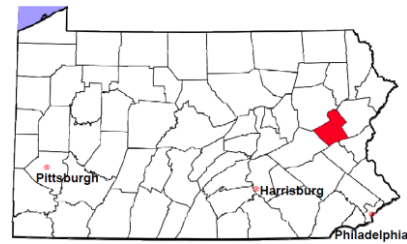
Data provided by CPCMS

Carbon County

2012 Population Estimate: 65,006

Class of County: 6th

No. of Common Pleas Court Judgeships: 3

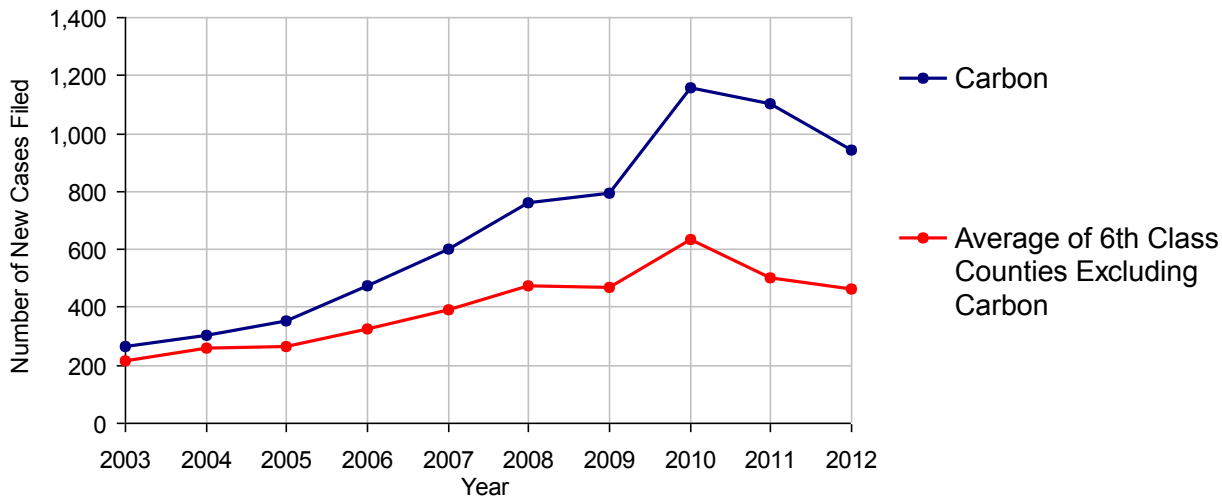


2012 Civil	Civil Action	Other	Total
Cases Pending 1/1/2012	506	335	841
Docketed Cases	463	481	944
Arbitration Appeals	18	0	18
Transferred In	5	0	5
Returned to Active	4	2	6
Cases Available for Processing	996	818	1,814
Disposed By:			
Default Judgments	151	262	413
Cases Decided by Arbitration Board	71	1	72
Dispositive Motions	56	41	97
Settlements	206	113	319
Moved to Inactive Status	16	9	25
Transferred/Withdrawn	33	8	41
Administrative Purge	1	0	1
Other	15	6	21
Jury Trial	3	0	3
Non-Jury Trial	28	63	91
Total Cases Disposed	580	503	1,083
Cases Pending 12/31/2012	416	315	731

Age of Pending Cases as of 12/31/2012 (Civil Action Only)

0-6 months	145	34.9%
7-12 months	93	22.4%
13-18 months	42	10.1%
19-24 months	41	9.9%
25-30 months	34	8.2%
31-36 months	16	3.8%
37-42 months	17	4.1%
43-48 months	9	2.2%
49-54 months	6	1.4%
55-60 months	4	1.0%
61-66 months	2	0.5%
67-72 months	2	0.5%
Over 72 months	5	1.2%
Total	416	100.0%

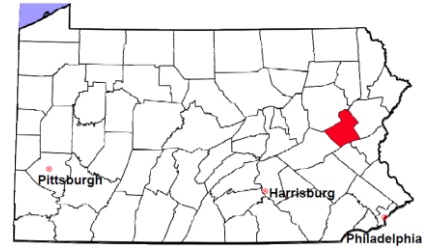
Docketed Cases, 2003-2012



Note: Prior to June 2010, docketed cases under the "Other" category were not reported. The inclusion of these cases starting from June 2010 may contribute to an increase in docketed cases from 2009 to 2010.

Carbon County

2012 Population Estimate: 65,006
 Class of County: 6th
 No. of Common Pleas Court Judgeships: 3



2012 Civil - Docketed Cases Listed by Case Type

TORT	83	8.8%	REAL PROPERTY	407	43.1%
<i>(does not include mass tort)</i>			Ejectment*	27	
Intentional	4		Eminent Domain/Condemnation	10	
Malicious Prosecution	0		Ground Rent	0	
Motor Vehicle	35		Landlord/Tenant Dispute	23	
Nuisance	5		Mortgage Foreclosure:		
Premise Liability	14		Residential*	327	
Product Liability	0		Commercial*	8	
Slander/Libel/Defamation	1		Partition of Real Property*	4	
Other	24		Quiet Title*	4	
MASS TORT	1	0.1%	Other*	4	
Asbestos	0		CIVIL APPEALS	44	4.7%
Tobacco	0		<i>- Administrative Agencies</i>		
Toxic Tort - DES	0		Board of Assessment*	16	
Toxic Tort - Implant	0		Board of Elections*	0	
Toxic Waste	0		Dept. of Transportation*	22	
Other	1		Zoning Board*	3	
PROFESSIONAL LIABILITY	4	0.4%	Statutory Appeal - Other*	3	
Dental	0		Other*	0	
Legal	0		MISCELLANEOUS	53	5.6%
Medical Malpractice	3		Common Law/		
Other	1		Statutory Arbitration*	0	
CONTRACT	352	37.3%	Declaratory Judgment*	10	
<i>(does not include judgments)</i>			Mandamus*	1	
Buyer Plaintiff	14		Non-Domestic Relations		
Debt Collection: Credit Card	202		Restraining Order*	0	
Debt Collection: Other	106		Quo Warranto*	0	
Employment Dispute:			Replevin*	4	
Employment Dispute: Discriminatio	0		Other*	38	
Employment Dispute: Other	3		TOTAL DOCKETED CASES:	944	100%
Other	27				

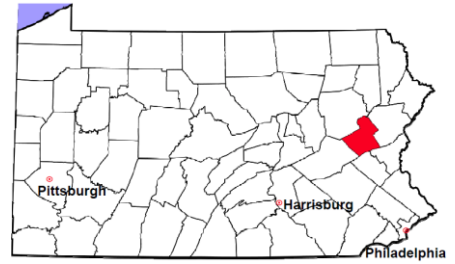
Of the Docketed Cases:

Pro Se Filings: 76 8.1% Class Action Suits: 0 MDJ Appeals: 76 8.1%

* Civil Other

Carbon County

2012 Population Estimate: 65,006
 Class of County: 6th
 No. of Common Pleas Court Judgeships: 3



2012 Protection From Abuse

**No. of
Petitions**

Cases Pending 1/1/2012	36
New Cases Filed in 2012	338

*Of these, Petitions Requesting Temporary Orders: 338 (100.0%)
 Temporary Orders DENIED: 91 (26.9%), Temporary Orders GRANTED: 247 (73.1%)*

Cases Available for Processing 374

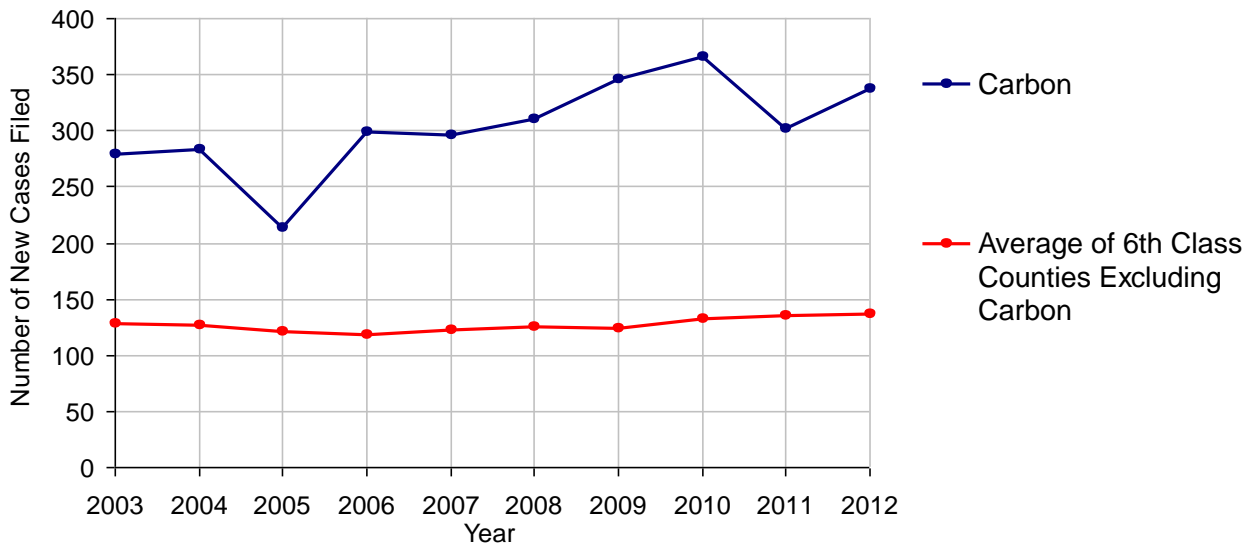
Processed By:

Temporary Order DENIED After Ex Parte Hearing and No Evidentiary Hearing Scheduled	0	
Temporary Order DISMISSED After Evidentiary Hearing and No Final Order Entered	15	4.3%
Final Order DENIED After Evidentiary Hearing Before a Judge	62	17.8%
Final Order GRANTED After Evidentiary Hearing Before a Judge	60	17.2%
Plaintiff Did Not Appear For Evidentiary Hearing	64	18.4%
Final Order by STIPULATION OR AGREEMENT Between the Parties	41	11.8%
Petition WITHDRAWN by Plaintiff	103	29.6%
TRANSFERRED to Another Jurisdiction	1	0.3%
DECEASED Party	2	0.6%
Other	0	

Cases Processed 348 100.0%

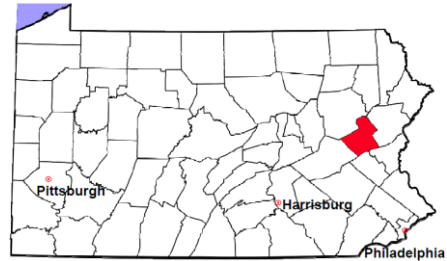
Cases Pending 12/31/2012 26

PFA New Cases Filed, 2003-2012



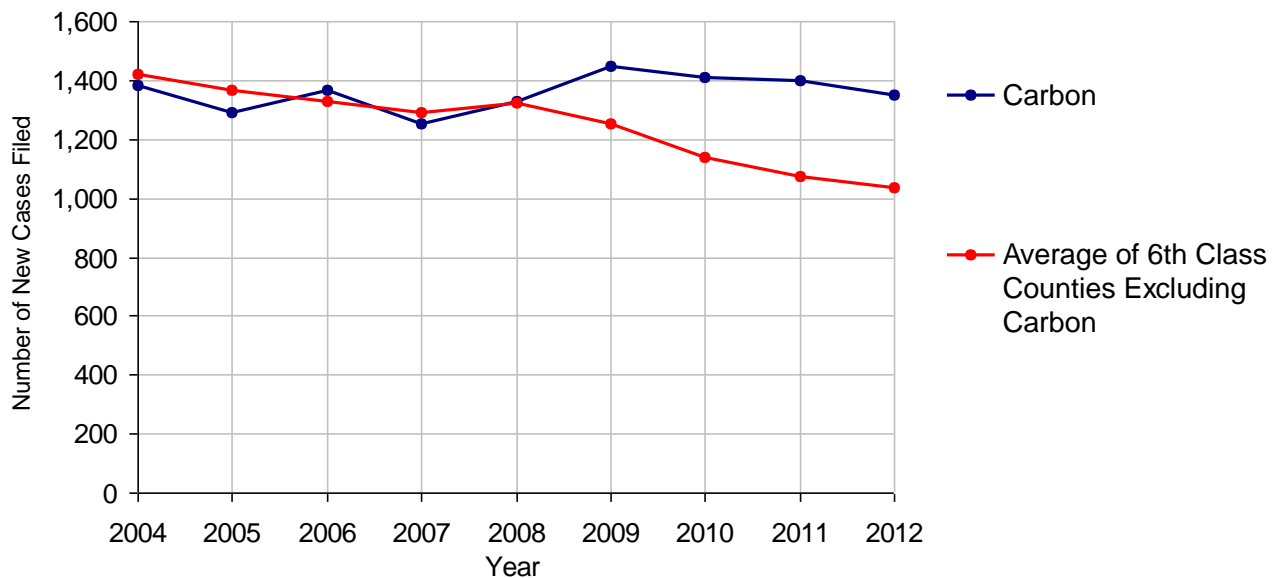
Carbon County

2012 Population Estimate: 65,006
 Class of County: 6th
 No. of Common Pleas Court Judgeships: 3



2012 Spousal & Child Support	No. of Petitions	
Cases Pending 1/1/2012	260	
New Cases Filed in 2012	1,353	
Dockets Transferred In (+)	43	
Dockets Transferred Out (-)	53	
Cases Available for Processing	1,603	
Processed By:		
Judge	23	1.7%
Intake Officer	1,278	91.8%
Hearing Officer	90	6.5%
Other	1	0.1%
Cases Processed	1,392	100.0%
Cases Pending 12/31/2012	211	

Spousal & Child Support New Cases Filed, 2004-2012

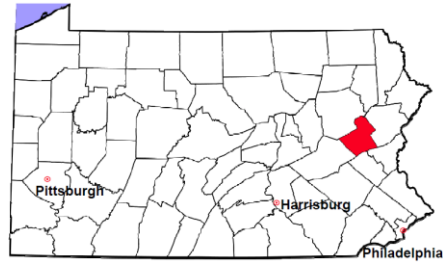


Carbon County

2012 Population Estimate: 65,006

Class of County: 6th

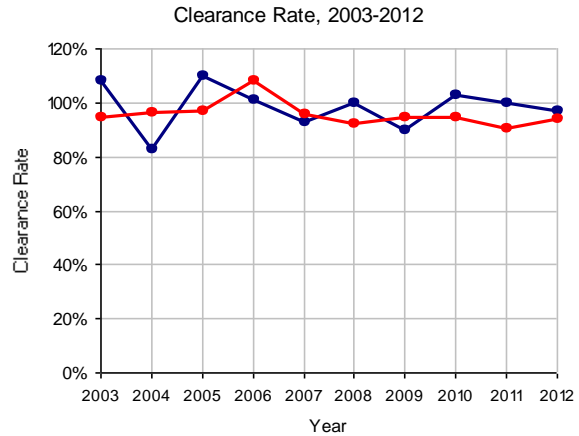
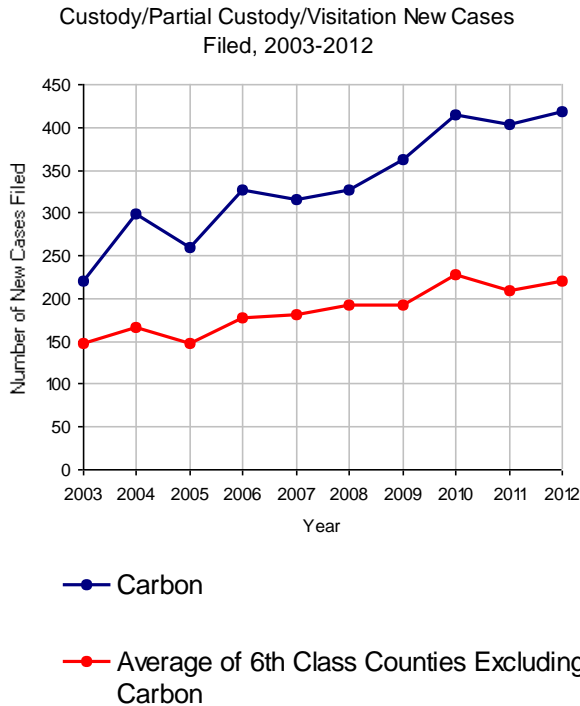
No. of Common Pleas Court Judgeships: 3



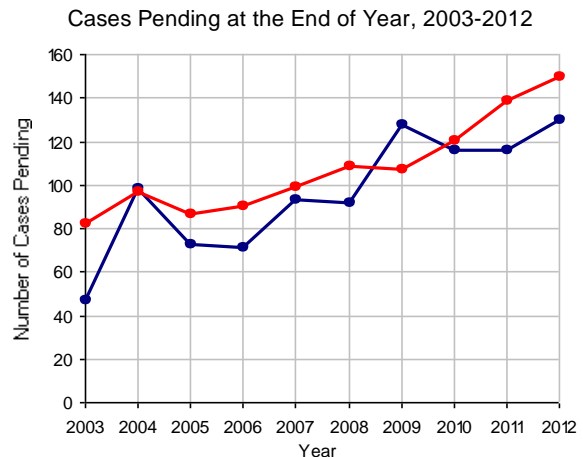
2012 Custody/Partial Custody/Visitation

No. of Petitions

Cases Pending 1/1/2012	116
New Cases Filed in 2012	419
Cases Available for Processing	535
Processed By:	
Judge	226 55.8%
Non-Judicial Officer	150 37.0%
Other	29 7.2%
Cases Processed	405 100.0%
Cases Pending 12/31/2012	130

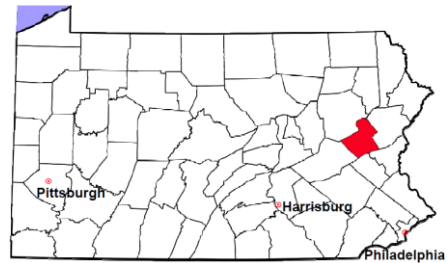


Note: Clearance Rate = Cases Processed / New Cases Filed



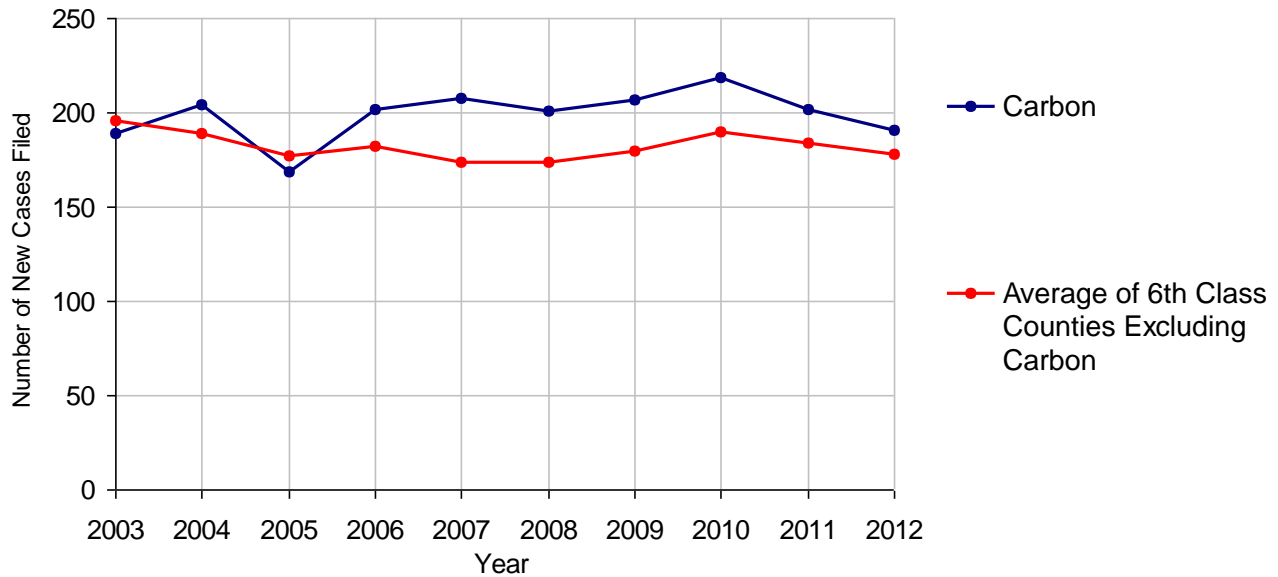
Carbon County

2012 Population Estimate: 65,006
 Class of County: 6th
 No. of Common Pleas Court Judgeships: 3



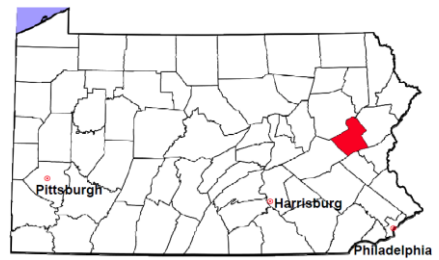
2012 Divorce	No. of Petitions	
Cases Pending 1/1/2012	224	
New Cases Filed in 2012	191	
Cases Available for Processing	415	
Processed By:		
Contested Before a Judge	0	
Contested Before a Master	19	10.9%
Uncontested	115	66.1%
Other	40	23.0%
Cases Processed	174	100.0%
Cases Pending 12/31/2012	241	

Divorce New Cases Filed, 2003-2012



Carbon County

2012 Population Estimate: 65,006
 Class of County: 6th
 No. of Common Pleas Court Judgeships: 3



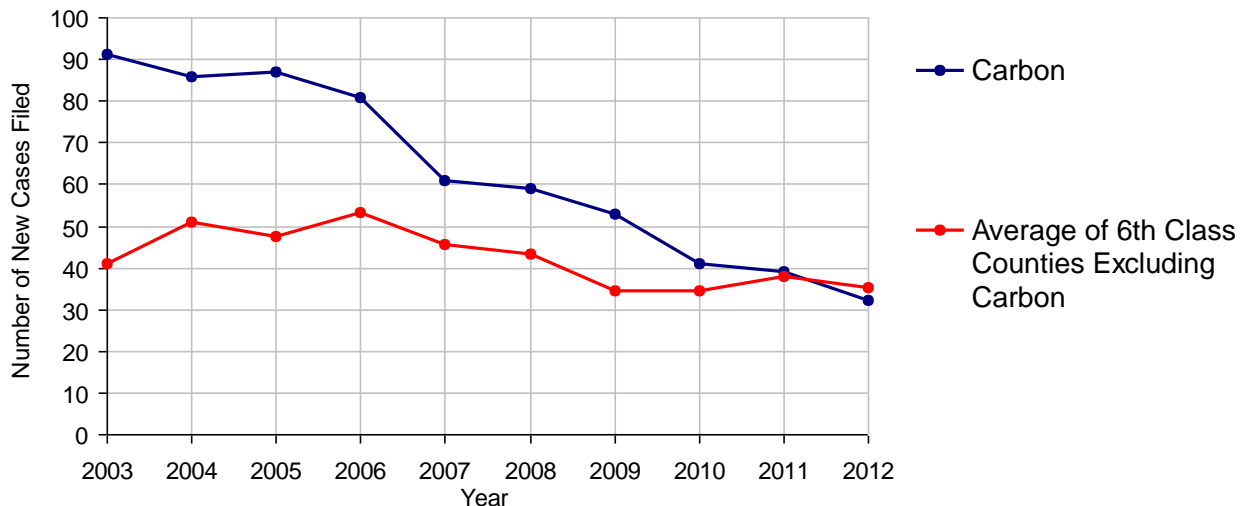
2012 Juvenile Dependency - Active Dependent Inventory



	Abuse/ Neglect	Status Offenses	Total
Cases Pending 1/1/2012	1	2	3
New Petitions Filed in 2012	21	11	32
Other	0	0	0
Total Petitions Available for Processing	22	13	35
Processed by:			
Adjudicated Dependent			
Judge	15	9	24
Master	0	0	0
Adjudicated NOT Dependent			
Judge	4	0	4
Master	0	0	0
Withdrawn/Dismissed/Inactive	3	4	7
Other	0	0	0
Total Petitions Processed	22	13	35
Cases Pending 12/31/2012	0	0	0

Data provided by CPCMS

Abuse/Neglect and Status Offenses New Cases Filed, 2003-2012



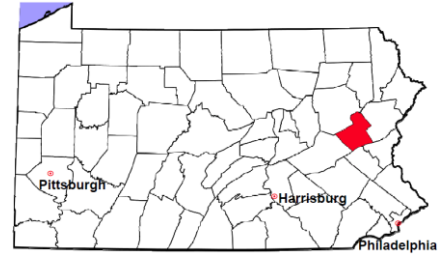
Note: Dependency data for 2002-2010 were collected manually. Dependency data for 2011 and 2012 were provided by CPCMS.

Carbon County

2012 Population Estimate: 65,006

Class of County: 6th

No. of Common Pleas Court Judgeships: 3



2012 Juvenile Dependency - Adjudicated Dependent Inventory



	Abuse/ Neglect	Status Offenses	Total
Cases Pending 1/1/2012	37	5	42
New Adjudicated Dependent Cases	15	9	24
Other	0	0	0
Total Adjudicated Dependent Cases	52	14	66

Court Supervision Terminated:

Family Reunification	7	29.2%	5	50.0%	12	35.3%
Adoption	1	4.2%	0		1	2.9%
Placement with a Relative/Guardian	10	41.7%	5	50.0%	15	44.1%
Aged Out	4	16.7%	0		4	11.8%
Other Permanency Outcomes*	2	8.3%	0		2	5.9%
Other**	0		0		0	
Total Adjudicated Dependent Cases Terminated	24	100.0%	10	100.0%	34	100.0%
Cases Pending 12/31/2012	28		4		32	

Data provided by CPCMS

* Other Permanency Outcomes include: adjudicated delinquent, death due to natural causes, death due to negligence, emancipation, permanent living arrangement, and parent has come forward.

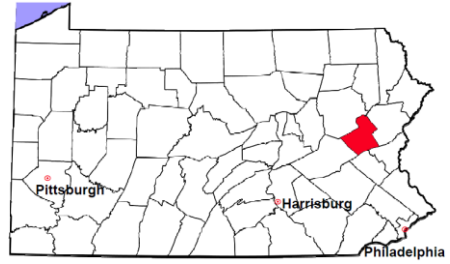
** Other includes cases where court supervision is terminated due to transfer out of jurisdiction, withdrawal and administrative closure.

Carbon County

2012 Population Estimate: 65,006

Class of County: 6th

No. of Common Pleas Court Judgeships: 3

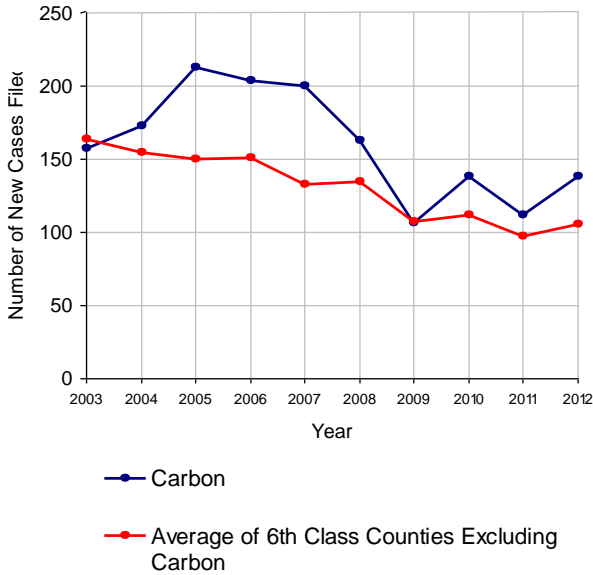


2012 Juvenile Delinquency

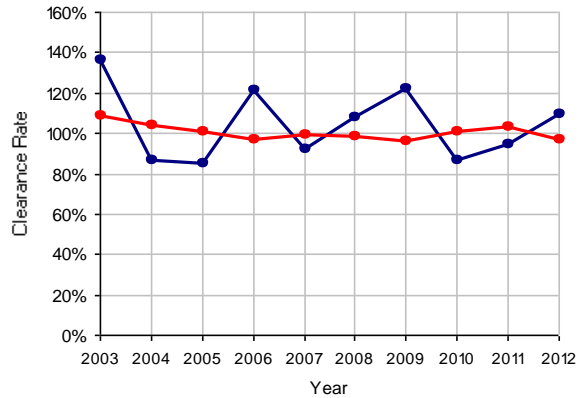
No. of Cases

Cases Pending 1/1/2012	58
New Cases Filed in 2012	138
Cases Available for Processing	196
Processed By:	
Judge	52 34.4%
Non-Judicial Officer	52 34.4%
Other	47 31.1%
Cases Processed	151 100.0%
Cases Pending 12/31/2012	45

Juvenile Delinquency New Cases Filed, 2003-2012

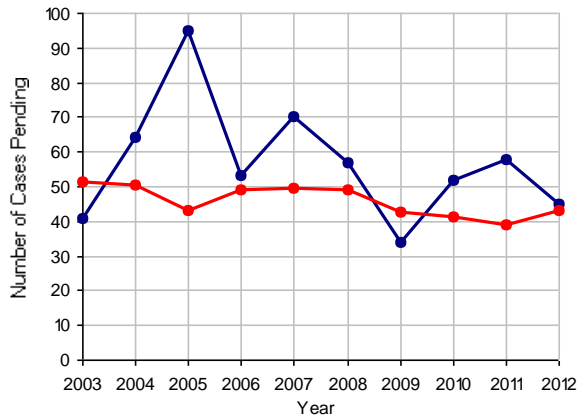


Clearance Rate, 2003-2012



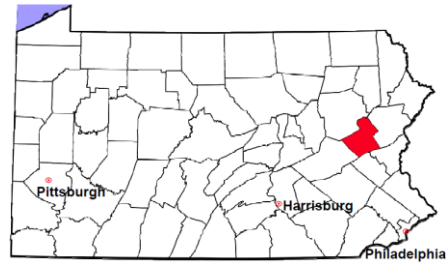
Note: Clearance Rate = Cases Processed / New Cases Filed

Cases Pending at the End of Year, 2003-2012



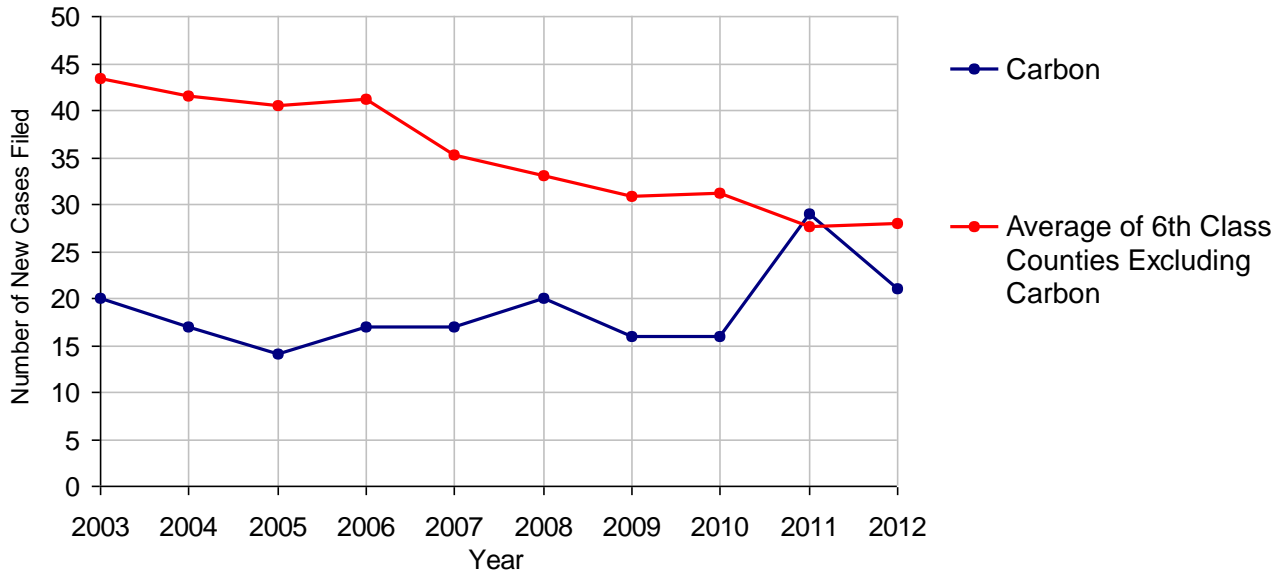
Carbon County

2012 Population Estimate: 65,006
 Class of County: 6th
 No. of Common Pleas Court Judgeships: 3



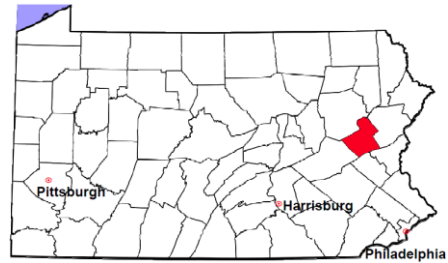
2012 Accounts	No. of Cases	
Cases Pending 1/1/2012	12	
New Cases Filed in 2012	21	
Cases Available for Processing	33	
Processed By:		
Contested before a Judge	4	18.2%
Contested before a Non-judicial Officer	0	
Uncontested	17	77.3%
Other	1	4.5%
Cases Processed	22	100.0%
Cases Pending 12/31/2012	11	

Accounts New Cases Filed, 2003-2012



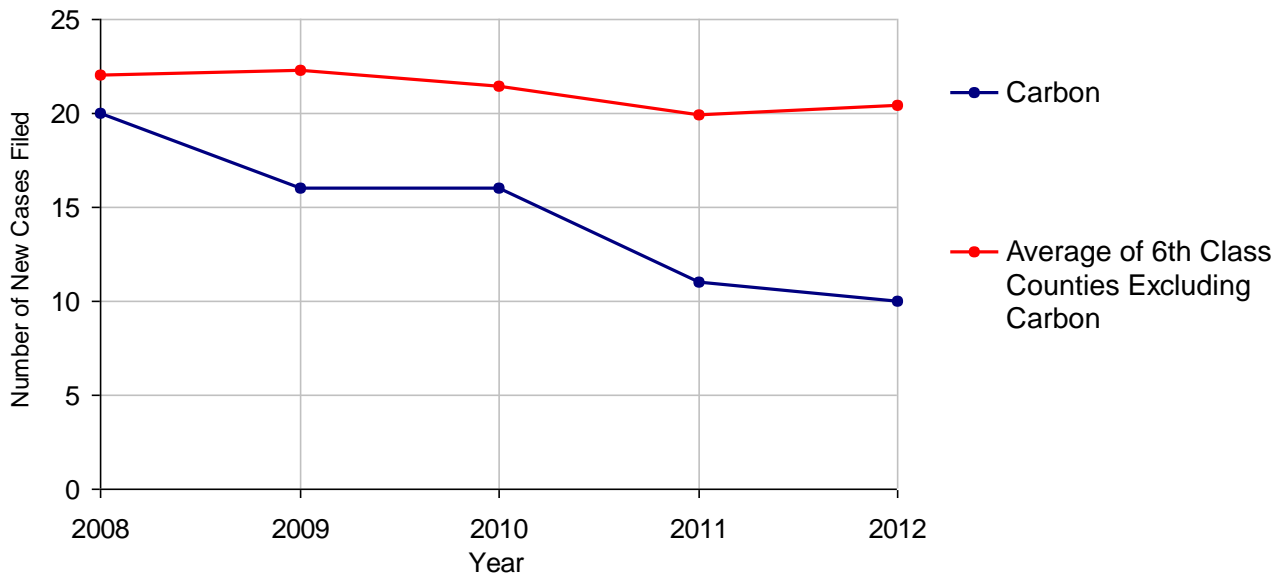
Carbon County

2012 Population Estimate: 65,006
 Class of County: 6th
 No. of Common Pleas Court Judgeships: 3



2012 Adoptions		No. of Cases	
Cases Pending 1/1/2012		4	
New Cases Filed in 2012		10	
Cases Available for Processing		14	
Processed By:			
Contested before a Judge	Granted	0	
	Denied	0	
Uncontested	Granted	10	100.0%
	Denied	0	
Other		0	
Cases Processed		10	100.0%
Cases Pending 12/31/2012		4	

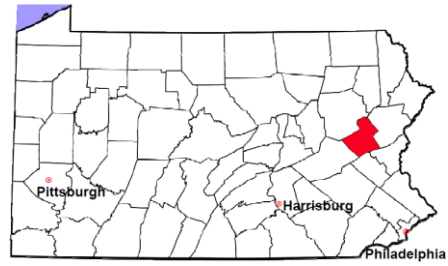
Adoptions New Cases Filed, 2008-2012



Note: Prior to 2008, each petition was counted as one new case, regardless of the number of children listed on the petition. Starting in 2008, each child listed on a petition is counted as a separate case. Therefore, statistics since 2008 should not be compared to statistics prior to 2008.

Carbon County

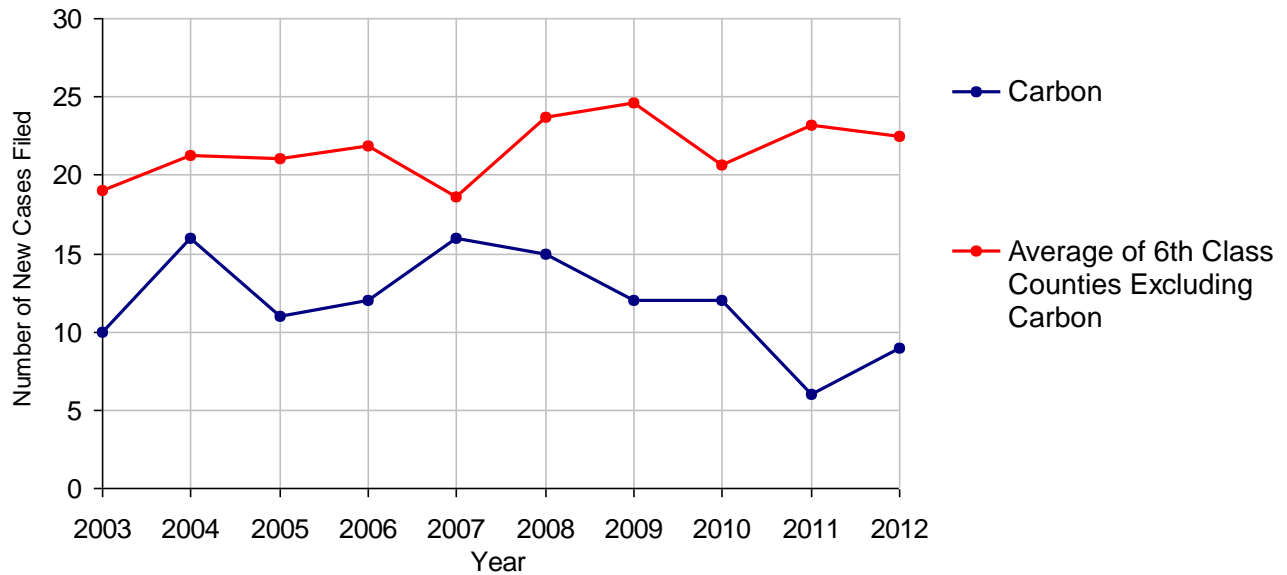
2012 Population Estimate: 65,006
 Class of County: 6th
 No. of Common Pleas Court Judgeships: 3



2012 Relinquishments/Terminations	No. of Cases
Cases Pending 1/1/2012	5 (R)
New Cases Filed in 2012	9
Cases Available for Processing	14
Processed By:	
Contested before a Judge	6 66.7%
Uncontested	3 33.3%
Other	0
Cases Processed	9 100.0%
Cases Pending 12/31/2012	5

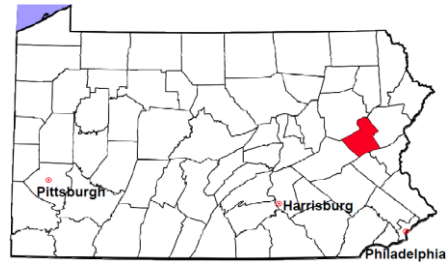
(R) - Revised

Relinquishments/Terminations New Cases Filed, 2003-2012



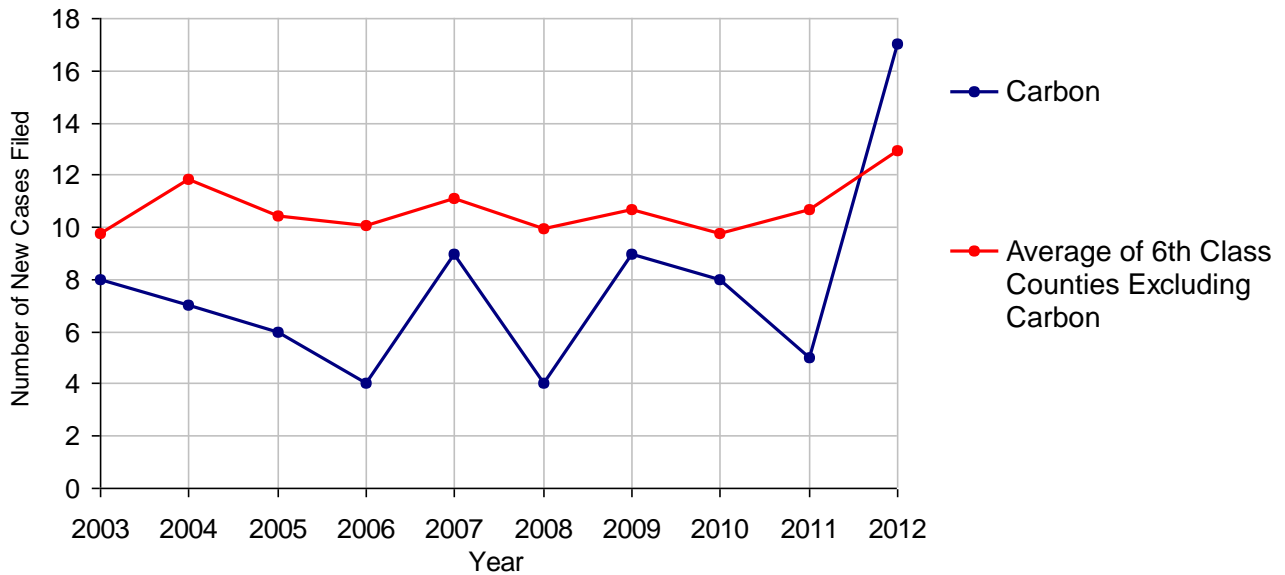
Carbon County

2012 Population Estimate: 65,006
 Class of County: 6th
 No. of Common Pleas Court Judgeships: 3



2012 Appointment of Guardians	No. of Cases	
Cases Pending 1/1/2012	0	
New Cases Filed in 2012	17	
Cases Available for Processing	17	
Processed By:		
Contested before a Judge	0	
Uncontested	10	76.9%
Other	3	23.1%
Cases Processed	13	100.0%
Cases Pending 12/31/2012	4	

Appointment of Guardians New Cases Filed, 2003-2012



Carbon County

2012 Population Estimate: 65,006
 Class of County: 6th
 No. of Common Pleas Court Judgeships: 3



2012 Jury Yield and Utilization

Jury Yield

Qualification Questionnaires/Summonses Mailed:	4,500	A		
Returned Undeliverable:	220	B	4.9%	Of Qualification Questionnaires/Summonses Mailed
Not Responded to:	141	C	3.1%	
the Number of Prospective Jurors:				
Disqualified:	454	D	10.1%	
Exempted:	742	E	16.5%	
Excused:	595	F	13.2%	
Deferred to New Term:	273	G	6.1%	
Deferred from Previous Term:	173	H	3.8%	
Total Number of Qualified Jurors Available for Service:	2,248	I	50.0%	

I=A-B-C-D-E-F-G+H

Jury Utilization

the Number of Jurors:			
Reporting for Service:	1,181		52.5%
Told Not to Report for Service:	275		12.2%
Sent to Courtroom for Jury Selection (Voir Dire):	1,131		95.8%
Impanelled or Sworn (jurors/alternates):	307		26.0%
Removed for Cause/Hardship:	228		
Removed by Peremptory Challenge:	236		

Jury Costs

Total Annual Budget for Juror Operations:	\$62,720.00	J
Average Cost Per Juror:	\$13.94	K

K=J/A

In mid-2011, AOPC began utilizing the National Center for State Courts' Jury Managers' Toolbox for collecting jury data. In 2012, the counties began providing additional jury data which included information about the summoning practices in the counties. With this additional data, we can now see not only how many citizens come to our courthouses every day in anticipation of serving on a jury, but the number of citizens actually summoned and the number of those summonsed who are exempt, excused or disqualified from service. With this wider view of the jury process, we can determine the efficiency with which our courts operate, and with the assistance of the Jury Managers' Toolbox find guidance in streamlining the jury summoning practices.