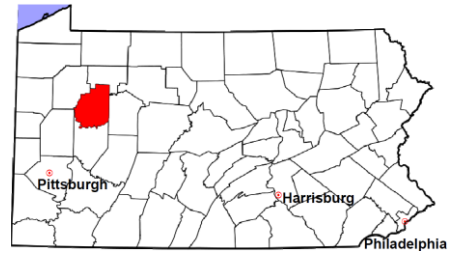


Clarion County

2012 Population Estimate: 39,646

Class of County: 6th

No. of Common Pleas Court Judgeships: 1



2012 Criminal	No. of Cases
---------------	--------------

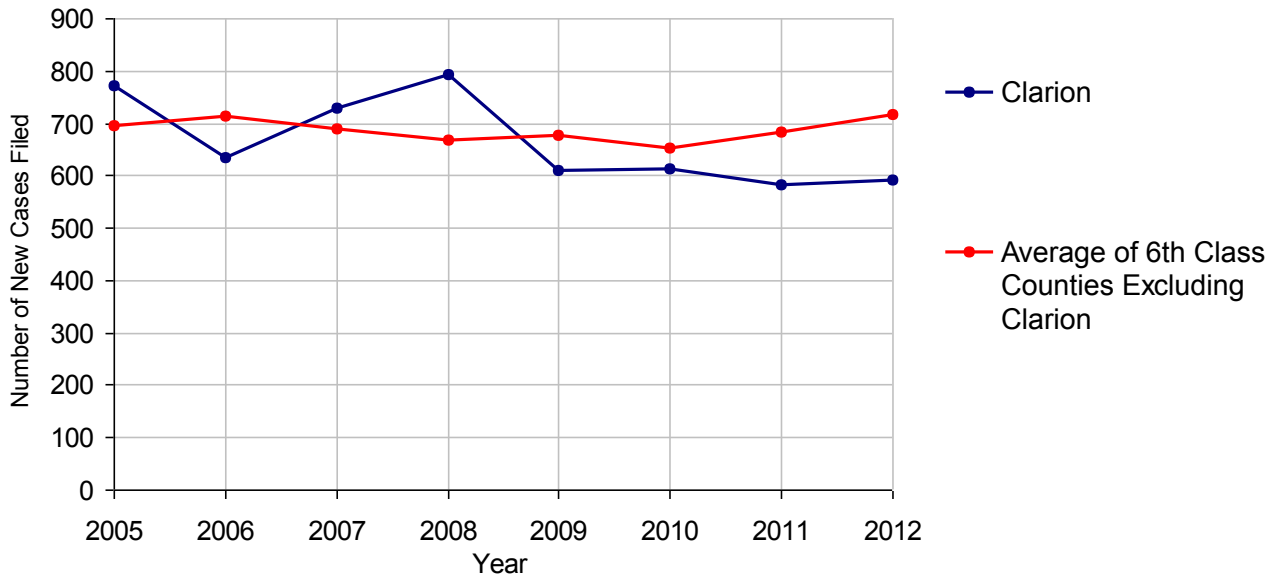
Cases Pending 1/1/2012	243
New Cases Filed in 2012	591
Reopened Cases	19
Cases Available for Disposition	853
Disposed by:	
Withdrawn/Dismissed	72 12.3%
ARD	166 28.4%
Guilty Plea	320 54.8%
Non-Jury Trial	1 0.2%
Jury Trial	9 1.5%
Inactive	7 1.2%
Other	9 1.5%
Total Cases Disposed	584 100.0%
Cases Pending 12/31/2012	269
Cases Awaiting Sentencing	37



Age of Pending Cases as of 12/31/2012		
0-60 Days	95	35.3%
61-120 Days	78	29.0%
121-180 Days	45	16.7%
181-240 Days	18	6.7%
241-300 Days	18	6.7%
301-360 Days	3	1.1%
Over 360 Days	12	4.5%
Total	269	100.0%

Data provided by CPCMS

Criminal New Cases Filed, 2005-2012

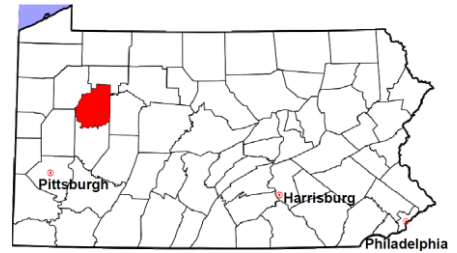


Clarion County

2012 Population Estimate: 39,646

Class of County: 6th

No. of Common Pleas Court Judgeships: 1



2012 Criminal - New Cases by Case Type



Case Type	Felony	Misdemeanor	Summary /Ungraded	Total
Person	22	38	0	60
Property	113	110	0	223
Drug	60	55	0	115
Weapon	4	2	0	6
Public Order	11	21	0	32
Motor Vehicle - DWI/DUI	0	154	0	154
Motor Vehicle - Other	0	1	0	1
Other	0	0	0	0
Total	210	381	0	591
	35.5%	64.5%		100.0%

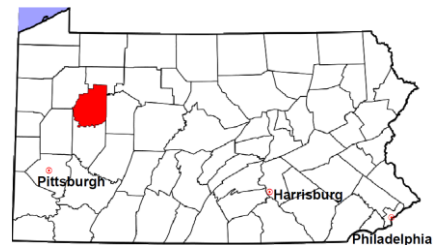
Data provided by CPCMS

Clarion County

2012 Population Estimate: 39,646

Class of County: 6th

No. of Common Pleas Court Judgeships: 1



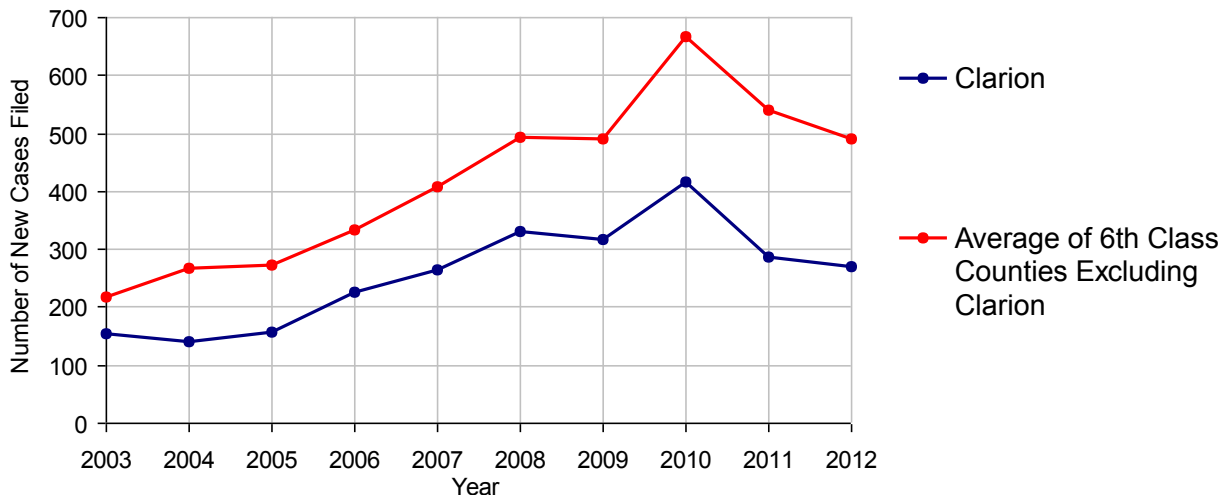
2012 Civil	Civil Action	Other	Total
Cases Pending 1/1/2012	273	158	431 (R)
Docketed Cases	129	141	270
Arbitration Appeals	3	3	6
Transferred In	0	0	0
Returned to Active	1	1	2
Cases Available for Processing	406	303	709
Disposed By:			
Default Judgments	41	30	71
Cases Decided by Arbitration Board	1	0	1
Dispositive Motions	1	18	19
Settlements	59	44	103
Moved to Inactive Status	0	2	2
Transferred/Withdrawn	14	1	15
Administrative Purge	59	10	69
Other	3	2	5
Jury Trial	1	0	1
Non-Jury Trial	2	0	2
Total Cases Disposed	181	107	288
Cases Pending 12/31/2012	225	196	421

Age of Pending Cases as of 12/31/2012 (Civil Action Only)

0-6 months	52	23.1%
7-12 months	36	16.0%
13-18 months	19	8.4%
19-24 months	20	8.9%
25-30 months	32	14.2%
31-36 months	26	11.6%
37-42 months	6	2.7%
43-48 months	8	3.6%
49-54 months	7	3.1%
55-60 months	3	1.3%
61-66 months	4	1.8%
67-72 months	2	0.9%
Over 72 months	10	4.4%
Total	225	100.0%

(R) - Revised

Docketed Cases, 2003-2012



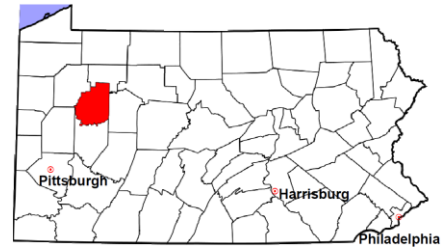
Note: Prior to June 2010, docketed cases under the "Other" category were not reported. The inclusion of these cases starting from June 2010 may contribute to an increase in docketed cases from 2009 to 2010.

Clarion County

2012 Population Estimate: 39,646

Class of County: 6th

No. of Common Pleas Court Judgeships: 1



2012 Civil - Docketed Cases Listed by Case Type

TORT 28 10.4%

(does not include mass tort)

Intentional	0
Malicious Prosecution	0
Motor Vehicle	11
Nuisance	0
Premise Liability	8
Product Liability	2
Slander/Libel/Defamation	0
Other	7

MASS TORT 0

Asbestos	0
Tobacco	0
Toxic Tort - DES	0
Toxic Tort - Implant	0
Toxic Waste	0
Other	0

PROFESSIONAL LIABILITY 1 0.4%

Dental	0
Legal	0
Medical Malpractice	1
Other	0

CONTRACT 99 36.7%

(does not include judgments)

Buyer Plaintiff	3
Debt Collection: Credit Card	50
Debt Collection: Other	31
Employment Dispute:	
Employment Dispute: Discriminatio	0
Employment Dispute: Other	2
Other	13

REAL PROPERTY 93 34.4%

Ejectment*	4
Eminent Domain/Condemnation	2
Ground Rent	0
Landlord/Tenant Dispute	1
Mortgage Forclosures:	
Residential*	50
Commercial*	17
Partition of Real Property*	2
Quiet Title*	13
Other*	4

CIVIL APPEALS 18 6.7%

- Administrative Agencies

Board of Assessment*	1
Board of Elections*	0
Dept. of Transportation*	15
Zoning Board*	0
Statutory Appeal - Other*	0
Other*	2

MISCELLANEOUS 31 11.5%

Common Law/	
Statutory Arbitration*	1
Declaratory Judgment*	1
Mandamus*	0
Non-Domestic Relations	
Restraining Order*	0
Quo Warranto*	0
Replevin*	1
Other*	28

TOTAL DOCKETED CASES: 270 100%

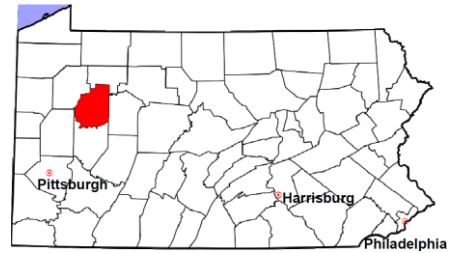
Of the Docketed Cases:

Pro Se Filings:	10	3.7%	Class Action Suits:	0	MDJ Appeals:	11	4.1%
-----------------	----	------	---------------------	---	--------------	----	------

* Civil Other

Clarion County

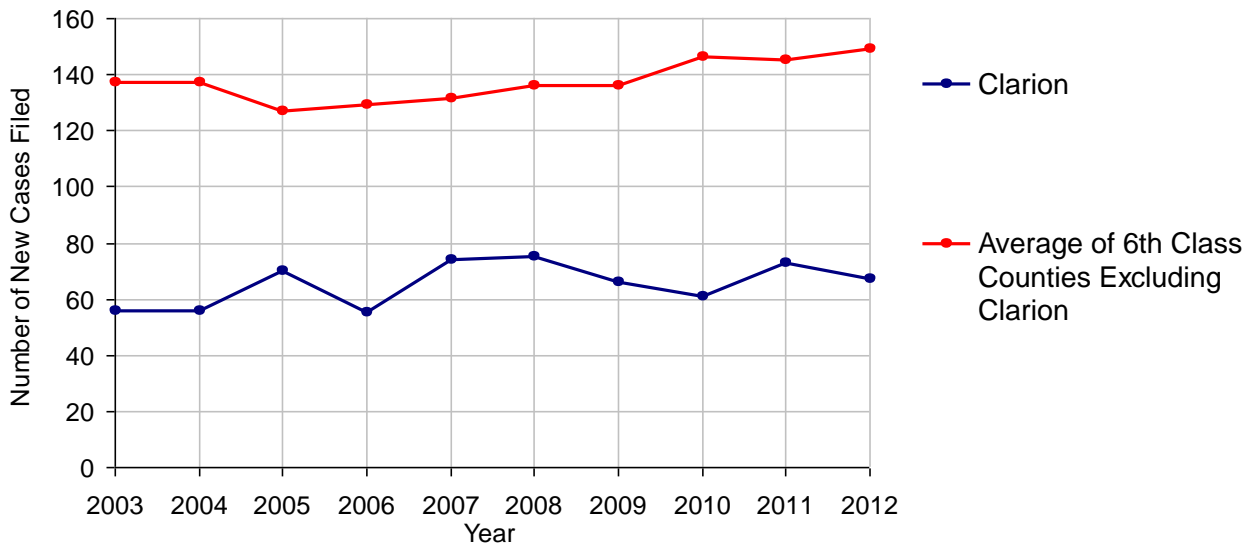
2012 Population Estimate: 39,646
 Class of County: 6th
 No. of Common Pleas Court Judgeships: 1



2012 Protection From Abuse

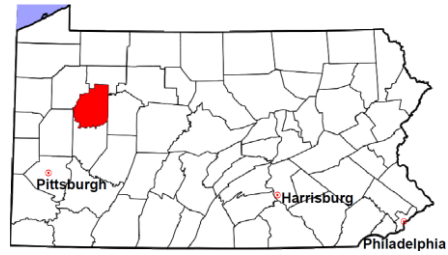
	No. of Petitions	
Cases Pending 1/1/2012	2	
New Cases Filed in 2012	67	
<i>Of these, Petitions Requesting Temporary Orders: 67 (100.0%)</i>		
<i>Temporary Orders DENIED: 2 (3.0%), Temporary Orders GRANTED: 65 (97.0%)</i>		
Cases Available for Processing	69	
Processed By:		
Temporary Order DENIED After Ex Parte Hearing and No Evidentiary Hearing Scheduled	0	
Temporary Order DISMISSED After Evidentiary Hearing and No Final Order Entered	2	3.1%
Final Order DENIED After Evidentiary Hearing Before a Judge	4	6.2%
Final Order GRANTED After Evidentiary Hearing Before a Judge	11	16.9%
Plaintiff Did Not Appear For Evidentiary Hearing	1	1.5%
Final Order by STIPULATION OR AGREEMENT Between the Parties	34	52.3%
Petition WITHDRAWN by Plaintiff	12	18.5%
TRANSFERRED to Another Jurisdiction	0	
DECEASED Party	0	
Other	1	1.5%
Cases Processed	65	100.0%
Cases Pending 12/31/2012	4	

PFA New Cases Filed, 2003-2012



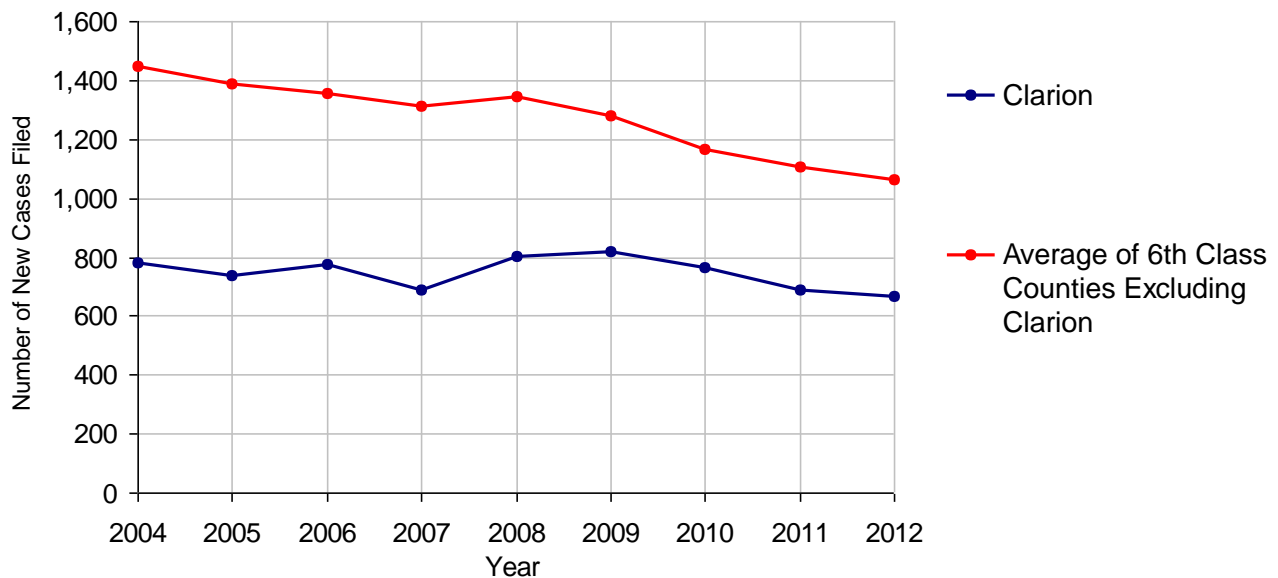
Clarion County

2012 Population Estimate: 39,646
 Class of County: 6th
 No. of Common Pleas Court Judgeships: 1



2012 Spousal & Child Support	No. of Petitions	
Cases Pending 1/1/2012	40	
New Cases Filed in 2012	669	
Dockets Transferred In (+)	10	
Dockets Transferred Out (-)	8	
Cases Available for Processing	711	
Processed By:		
Judge	1	0.2%
Intake Officer	626	96.6%
Hearing Officer	21	3.2%
Other	0	
Cases Processed	648	100.0%
Cases Pending 12/31/2012	63	

Spousal & Child Support New Cases Filed, 2004-2012

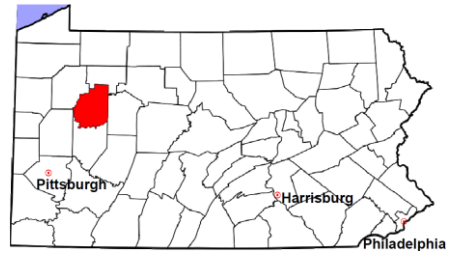


Clarion County

2012 Population Estimate: 39,646

Class of County: 6th

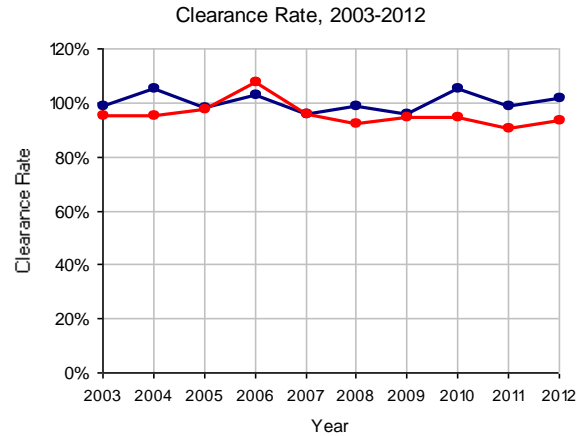
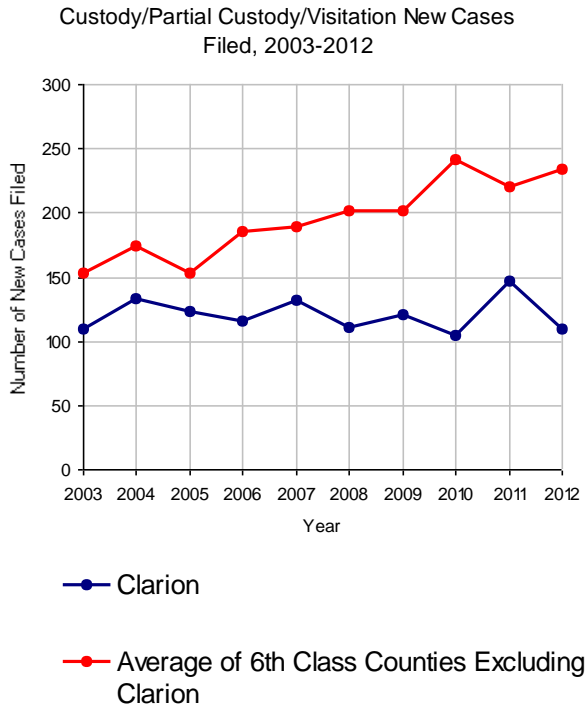
No. of Common Pleas Court Judgeships: 1



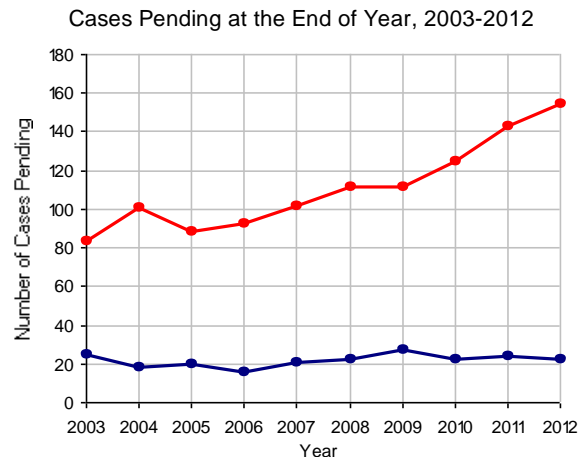
2012 Custody/Partial Custody/Visitation

No. of Petitions

Cases Pending 1/1/2012	24
New Cases Filed in 2012	110
Cases Available for Processing	134
Processed By:	
Judge	15 13.4%
Non-Judicial Officer	36 32.1%
Other	61 54.5%
Cases Processed	112 100.0%
Cases Pending 12/31/2012	22



Note: Clearance Rate = Cases Processed / New Cases Filed

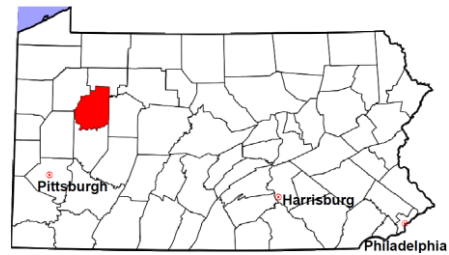


Clarion County

2012 Population Estimate: 39,646

Class of County: 6th

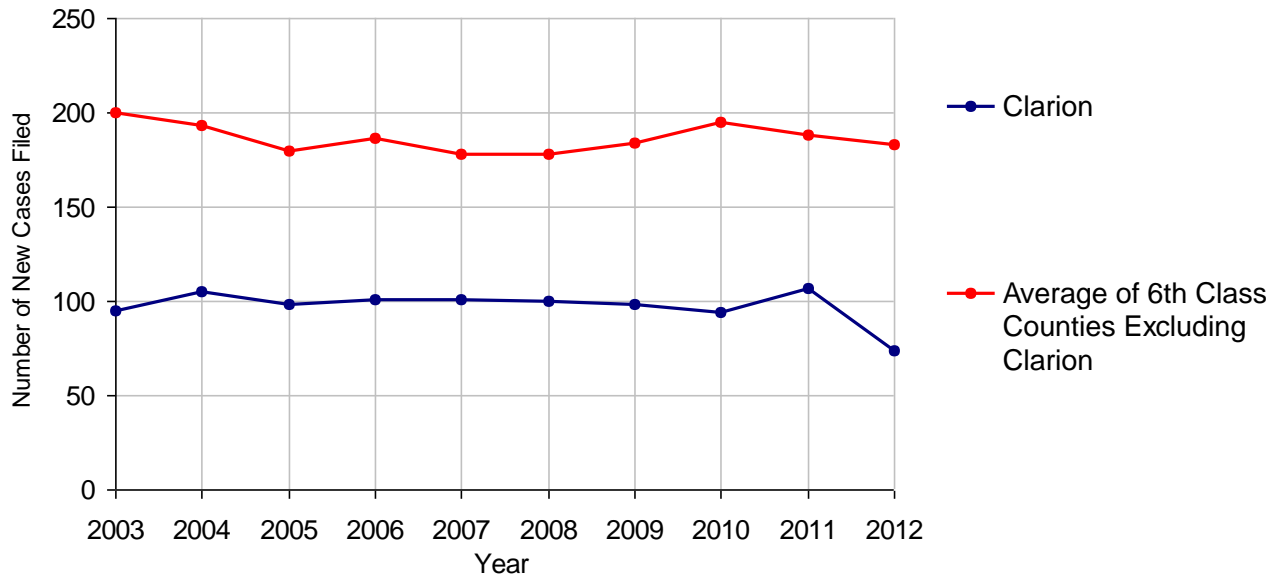
No. of Common Pleas Court Judgeships: 1



2012 Divorce

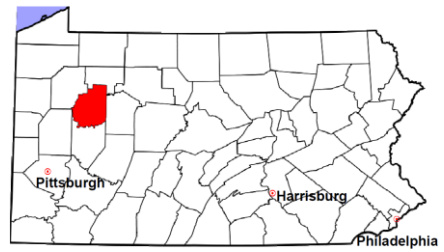
	No. of Petitions	
Cases Pending 1/1/2012	38	
New Cases Filed in 2012	74	
Cases Available for Processing	112	
Processed By:		
Contested Before a Judge	3	4.1%
Contested Before a Master	0	
Uncontested	54	73.0%
Other	17	23.0%
Cases Processed	74	100.0%
Cases Pending 12/31/2012	38	

Divorce New Cases Filed, 2003-2012



Clarion County

2012 Population Estimate: 39,646
 Class of County: 6th
 No. of Common Pleas Court Judgeships: 1



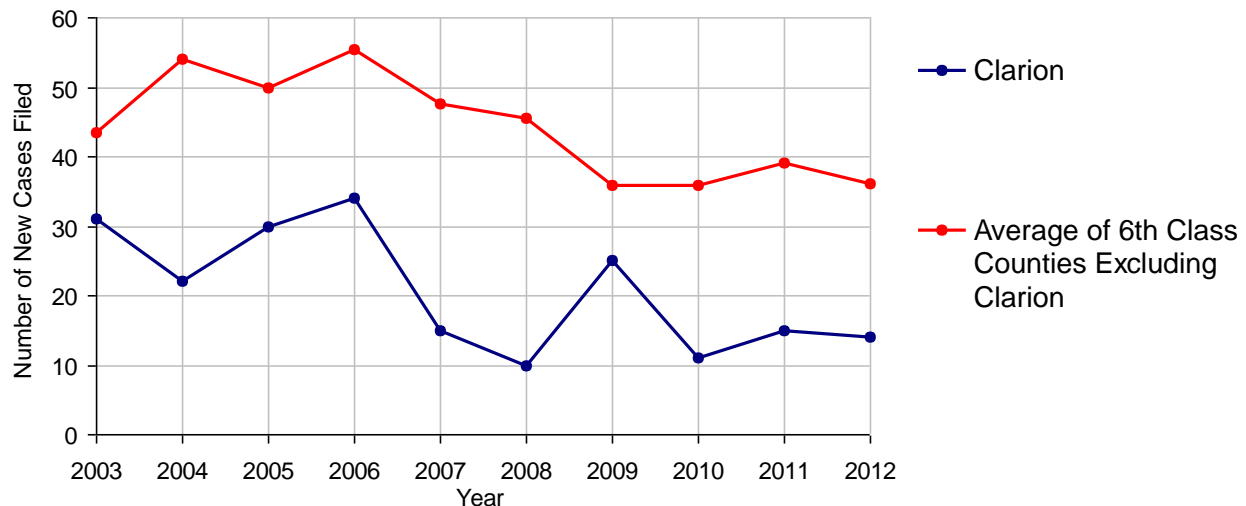
2012 Juvenile Dependency - Active Dependent Inventory



	Abuse/ Neglect	Status Offenses	Total
Cases Pending 1/1/2012	0	0	0
New Petitions Filed in 2012	14	0	14
Other	0	0	0
Total Petitions Available for Processing	14	0	14
Processed by:			
Adjudicated Dependent			
Judge	12	0	12
Master	0	0	0
Adjudicated NOT Dependent			
Judge	0	0	0
Master	0	0	0
Withdrawn/Dismissed/Inactive	0	0	0
Other	2	0	2
Total Petitions Processed	14	0	14
Cases Pending 12/31/2012	0	0	0

Data provided by CPCMS

Abuse/Neglect and Status Offenses New Cases Filed, 2003-2012



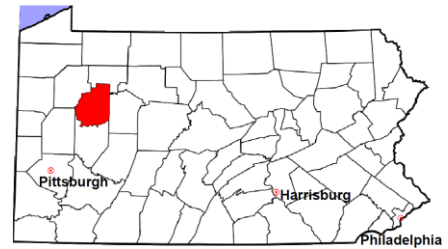
Note: Dependency data for 2002-2010 were collected manually. Dependency data for 2011 and 2012 were provided by CPCMS.

Clarion County

2012 Population Estimate: 39,646

Class of County: 6th

No. of Common Pleas Court Judgeships: 1



2012 Juvenile Dependency - Adjudicated Dependent Inventory



	Abuse/ Neglect	Status Offenses	Total
Cases Pending 1/1/2012	21	1	22
New Adjudicated Dependent Cases	12	0	12
Other	0	0	0
Total Adjudicated Dependent Cases	33	1	34
<u>Court Supervision Terminated:</u>			
Family Reunification	0	0	0
Adoption	2 22.2%	0	2 20.0%
Placement with a Relative/Guardian	4 44.4%	1 100.0%	5 50.0%
Aged Out	2 22.2%	0	2 20.0%
Other Permanency Outcomes*	0	0	0
Other**	1 11.1%	0	1 10.0%
Total Adjudicated Dependent Cases Terminated	9 100.0%	1 100.0%	10 100.0%
Cases Pending 12/31/2012	24	0	24

Data provided by CPCMS

* Other Permanency Outcomes include: adjudicated delinquent, death due to natural causes, death due to negligence, emancipation, permanent living arrangement, and parent has come forward.

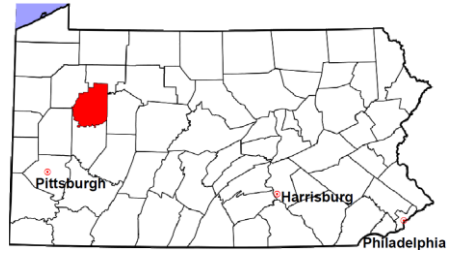
** Other includes cases where court supervision is terminated due to transfer out of jurisdiction, withdrawal and administrative closure.

Clarion County

2012 Population Estimate: 39,646

Class of County: 6th

No. of Common Pleas Court Judgeships: 1



2012 Juvenile Delinquency

No. of Cases

Cases Pending 1/1/2012 **9**

New Cases Filed in 2012 **73**

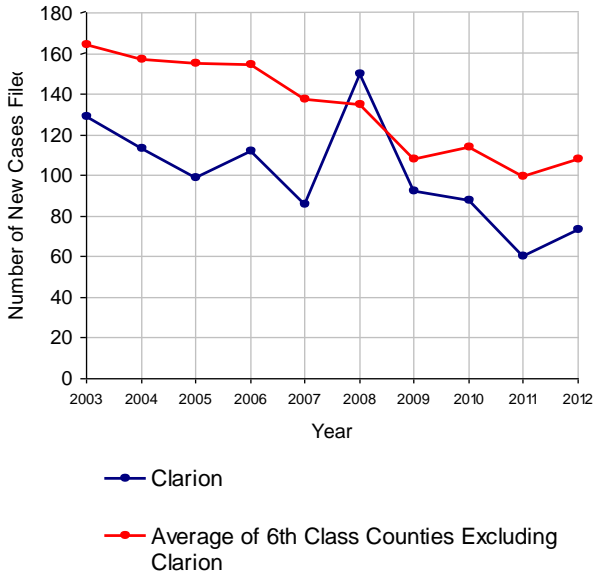
Cases Available for Processing 82

Processed By:

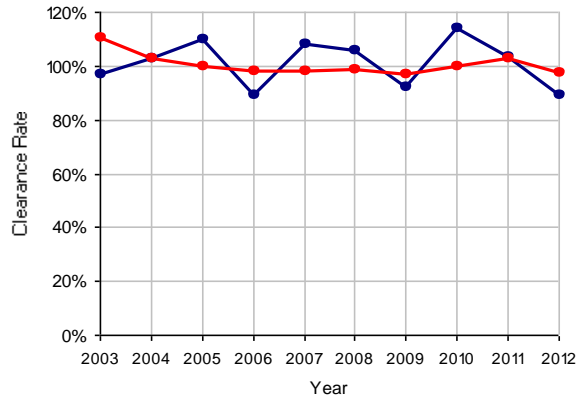
Judge	12	18.5%
Non-Judicial Officer	28	43.1%
Other	25	38.5%
Cases Processed	65	100.0%

Cases Pending 12/31/2012 17

Juvenile Delinquency New Cases Filed, 2003-2012

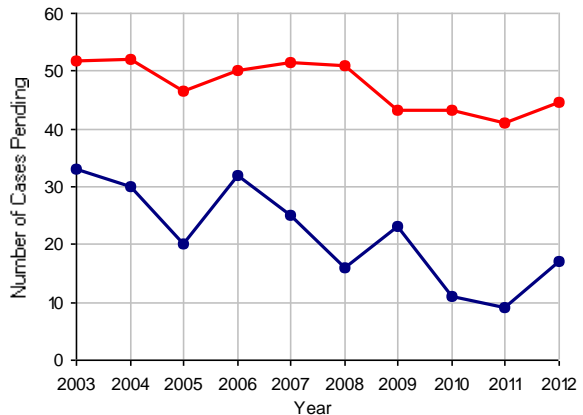


Clearance Rate, 2003-2012



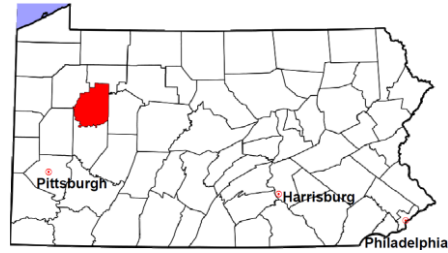
Note: Clearance Rate = Cases Processed / New Cases Filed

Cases Pending at the End of Year, 2003-2012



Clarion County

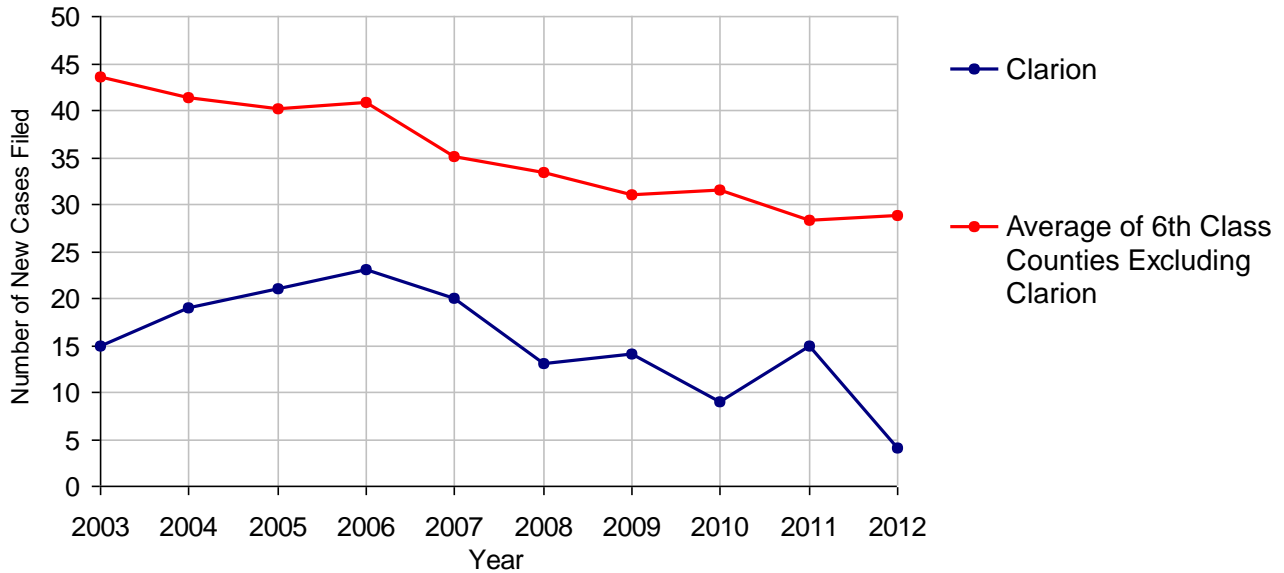
2012 Population Estimate: 39,646
 Class of County: 6th
 No. of Common Pleas Court Judgeships: 1



2012 Accounts

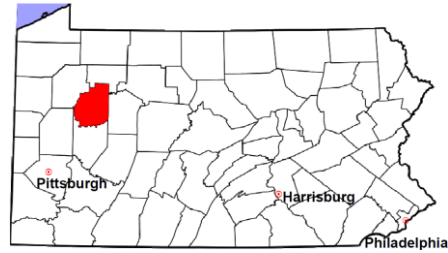
	No. of Cases	
Cases Pending 1/1/2012	0	
New Cases Filed in 2012	4	
Cases Available for Processing	4	
Processed By:		
Contested before a Judge	0	
Contested before a Non-judicial Officer	0	
Uncontested	4	100.0%
Other	0	
Cases Processed	4	100.0%
Cases Pending 12/31/2012	0	

Accounts New Cases Filed, 2003-2012



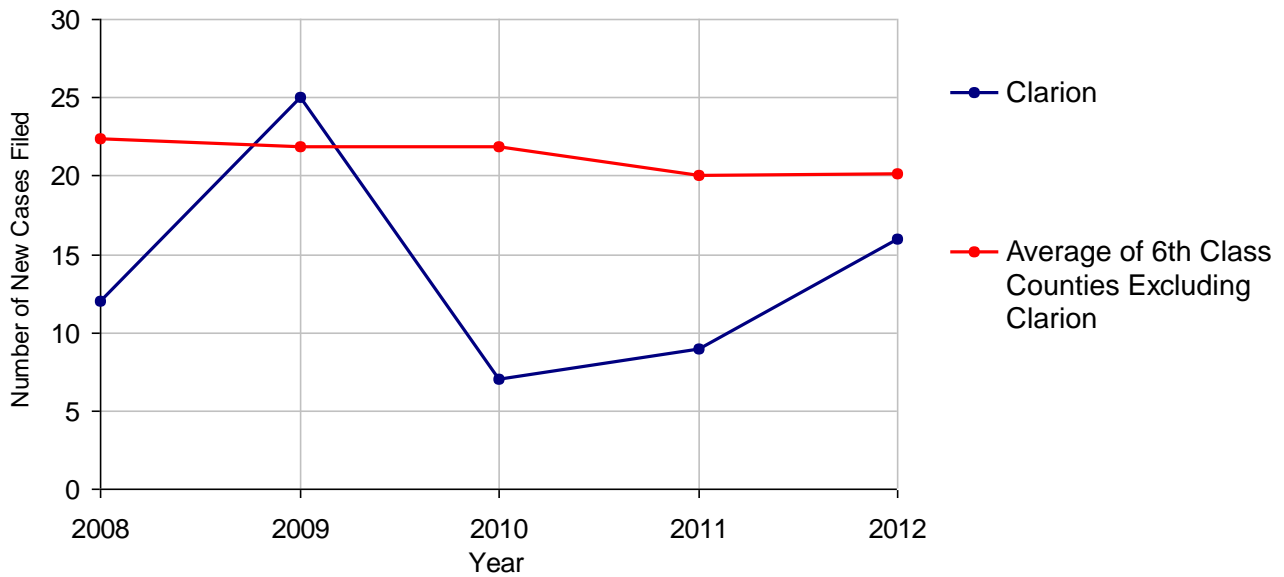
Clarion County

2012 Population Estimate: 39,646
 Class of County: 6th
 No. of Common Pleas Court Judgeships: 1



2012 Adoptions		No. of Cases	
Cases Pending 1/1/2012		1	
New Cases Filed in 2012		16	
Cases Available for Processing		17	
Processed By:			
Contested before a Judge	Granted	0	
	Denied	0	
Uncontested	Granted	16	100.0%
	Denied	0	
Other		0	
Cases Processed		16	100.0%
Cases Pending 12/31/2012		1	

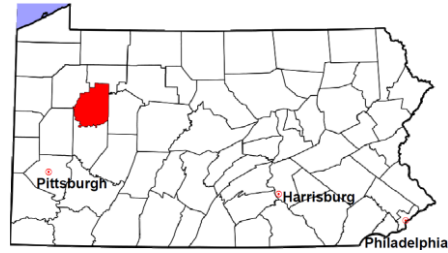
Adoptions New Cases Filed, 2008-2012



Note: Prior to 2008, each petition was counted as one new case, regardless of the number of children listed on the petition. Starting in 2008, each child listed on a petition is counted as a separate case. Therefore, statistics since 2008 should not be compared to statistics prior to 2008.

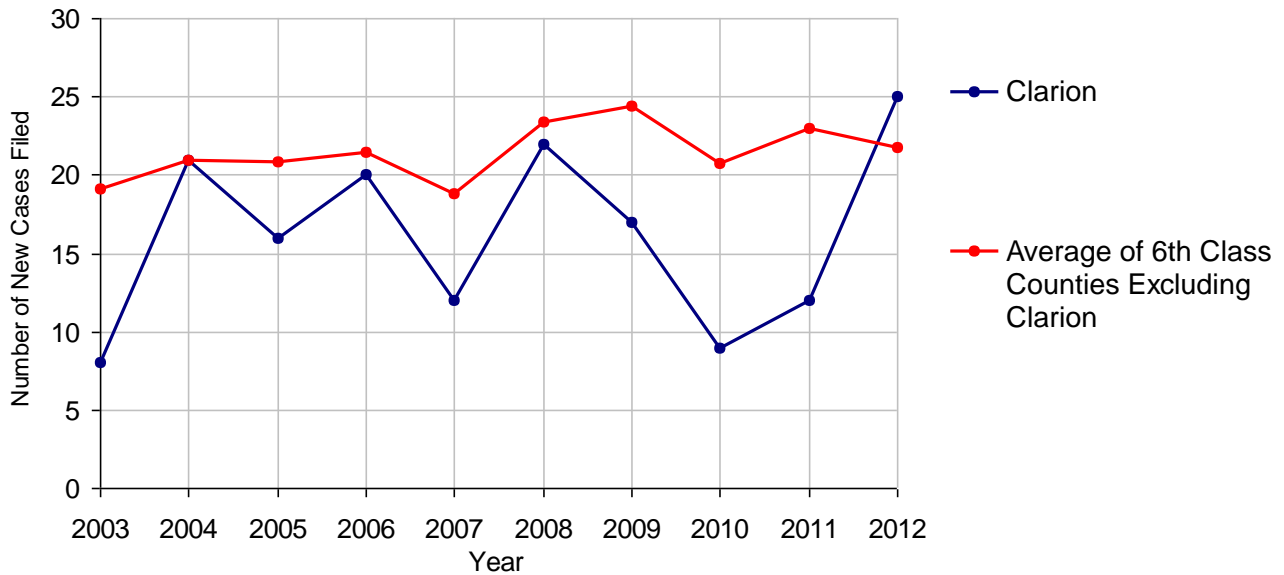
Clarion County

2012 Population Estimate: 39,646
 Class of County: 6th
 No. of Common Pleas Court Judgeships: 1



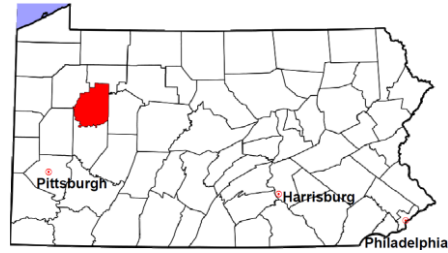
2012 Relinquishments/Terminations	No. of Cases
Cases Pending 1/1/2012	1
New Cases Filed in 2012	25
Cases Available for Processing	26
Processed By:	
Contested before a Judge	1 5.3%
Uncontested	16 84.2%
Other	2 10.5%
Cases Processed	19 100.0%
Cases Pending 12/31/2012	7

Relinquishments/Terminations New Cases Filed, 2003-2012



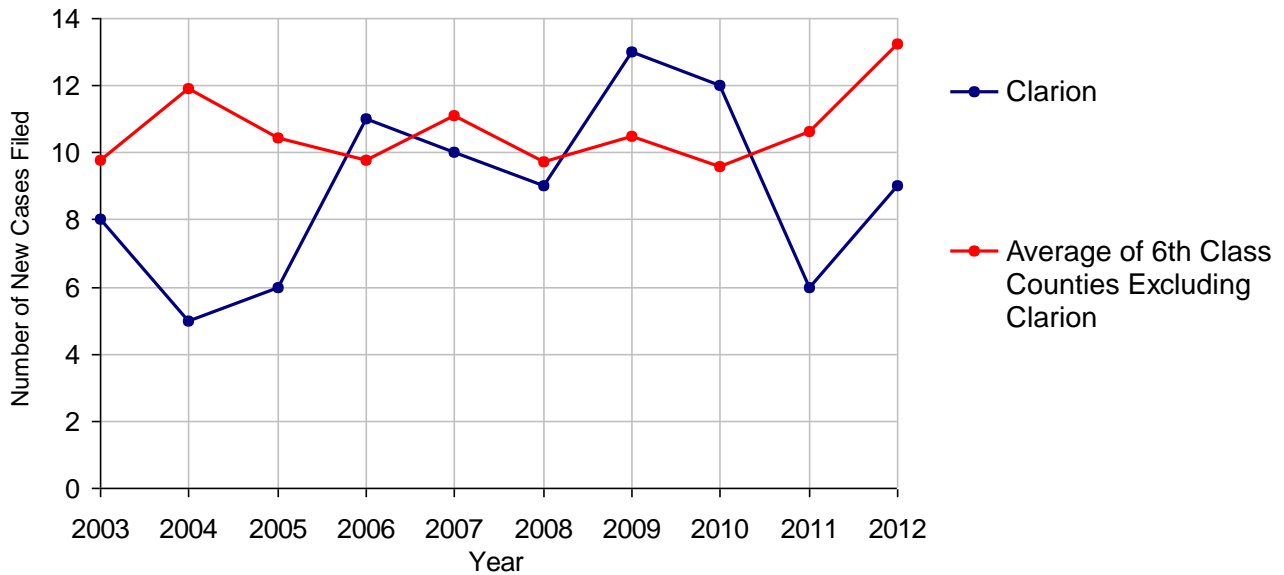
Clarion County

2012 Population Estimate: 39,646
 Class of County: 6th
 No. of Common Pleas Court Judgeships: 1



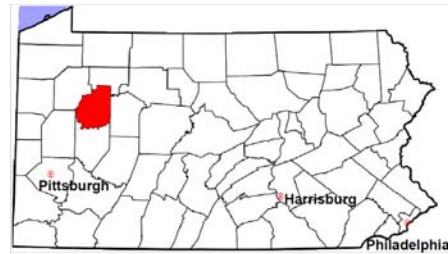
2012 Appointment of Guardians		No. of Cases	
Cases Pending 1/1/2012		4	
New Cases Filed in 2012		9	
Cases Available for Processing		13	
Processed By:			
Contested before a Judge		0	
Uncontested		10	90.9%
Other		1	9.1%
Cases Processed		11	100.0%
Cases Pending 12/31/2012		2	

Appointment of Guardians New Cases Filed, 2003-2012



Clarion County

2012 Population Estimate: 39,646
 Class of County: 6th
 No. of Common Pleas Court Judgeships: 1



2012 Jury Yield and Utilization

Jury Yield

Qualification Questionnaires/Summonses Mailed:	850	A		
Returned Undeliverable:	0	B		Of Qualification Questionnaires/Summonses Mailed
Not Responded to:	22	C	2.6%	
the Number of Prospective Jurors:				
Disqualified:	9	D	1.1%	
Exempted:	12	E	1.4%	
Excused:	121	F	14.2%	
Deferred to New Term:	65	G	7.6%	
Deferred from Previous Term:	37	H	4.4%	
Total Number of Qualified Jurors Available for Service:	658	I	77.4%	

$I = A - B - C - D - E - F - G + H$

Jury Utilization

the Number of Jurors:			
Reporting for Service:	526	79.9%	Of Jurors Qualified and Available
Told Not to Report for Service:	50	7.6%	
Sent to Courtroom for Jury Selection (Voir Dire):	526	100.0%	Of Jurors Reporting for Service
Impanelled or Sworn (jurors/alternates):	210	39.9%	
Removed for Cause/Hardship:	111		
Removed by Peremptory Challenge:	129		

Jury Costs

Total Annual Budget for Juror Operations:	\$49,560.00	J
Average Cost Per Juror:	\$58.31	K

$K = J/A$

In mid-2011, AOPC began utilizing the National Center for State Courts' Jury Managers' Toolbox for collecting jury data. In 2012, the counties began providing additional jury data which included information about the summoning practices in the counties. With this additional data, we can now see not only how many citizens come to our courthouses every day in anticipation of serving on a jury, but the number of citizens actually summonsed and the number of those summonsed who are exempt, excused or disqualified from service. With this wider view of the jury process, we can determine the efficiency with which our courts operate, and with the assistance of the Jury Managers' Toolbox find guidance in streamlining the jury summoning practices.