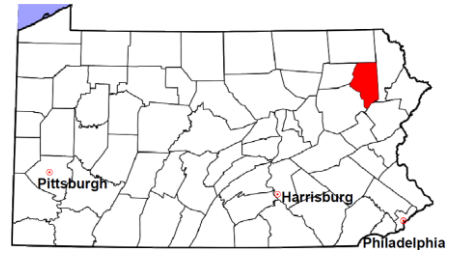


# Lackawanna County

2012 Population Estimate: 214,477

Class of County: 3rd

No. of Common Pleas Court Judgeships: 9



<b>2012 Criminal</b>	<b>No. of Cases</b>
----------------------	---------------------

Cases Pending 1/1/2012	717
New Cases Filed in 2012	2,537
Reopened Cases	154
<b>Cases Available for Disposition</b>	<b>3,408</b>
<b>Disposed by:</b>	
Withdrawn/Dismissed	179 6.7%
ARD	603 22.6%
Guilty Plea	1,697 63.5%
Non-Jury Trial	7 0.3%
Jury Trial	12 0.4%
Inactive	76 2.8%
Other	100 3.7%
<b>Total Cases Disposed</b>	<b>2,674 100.0%</b>
<b>Cases Pending 12/31/2012</b>	<b>734</b>
Cases Awaiting Sentencing	479

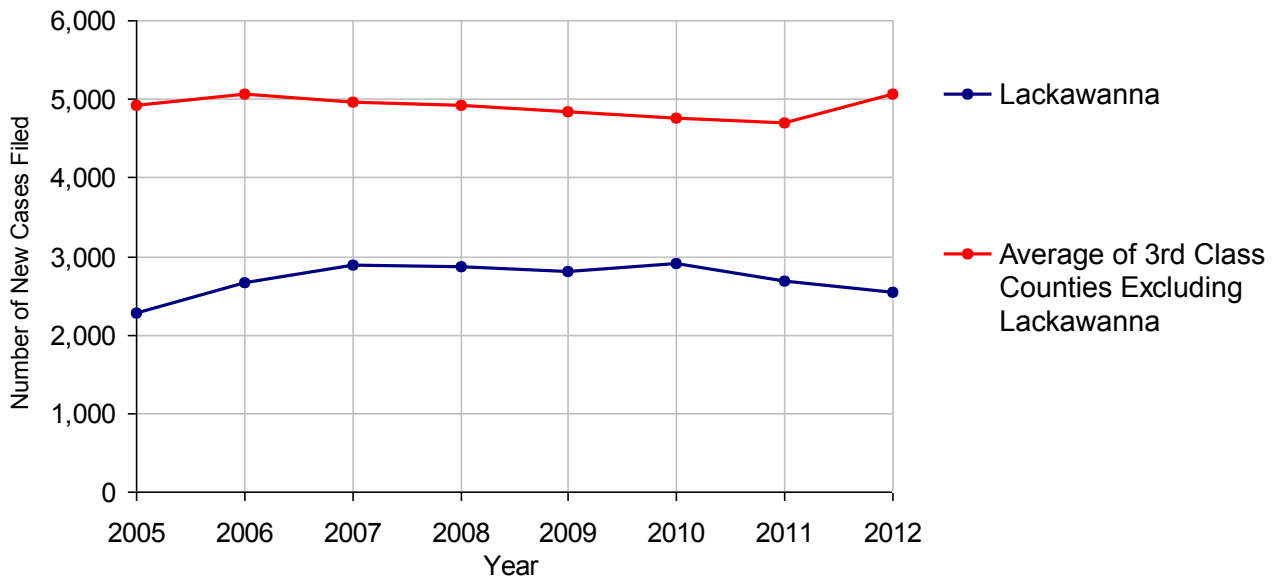


### Age of Pending Cases as of 12/31/2012

0-60 Days	400	54.5%
61-120 Days	147	20.0%
121-180 Days	56	7.6%
181-240 Days	56	7.6%
241-300 Days	21	2.9%
301-360 Days	22	3.0%
Over 360 Days	32	4.4%
<b>Total</b>	<b>734</b>	<b>100.0%</b>

Data provided by CPCMS

### Criminal New Cases Filed, 2005-2012

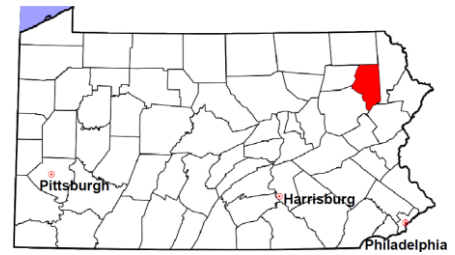


# Lackawanna County

2012 Population Estimate: 214,477

Class of County: 3rd

No. of Common Pleas Court Judgeships: 9



## 2012 Criminal - New Cases by Case Type



Case Type	Felony	Misdemeanor	Summary /Ungraded	Total
Person	185	201	35	421
Property	350	322	52	724
Drug	338	142	12	492
Weapon	14	12	1	27
Public Order	44	136	14	194
Motor Vehicle - DWI/DUI	0	667	3	670
Motor Vehicle - Other	0	5	1	6
Other	2	0	1	3
<b>Total</b>	<b>933</b>	<b>1,485</b>	<b>119</b>	<b>2,537</b>
	<b>36.8%</b>	<b>58.5%</b>	<b>4.7%</b>	<b>100.0%</b>

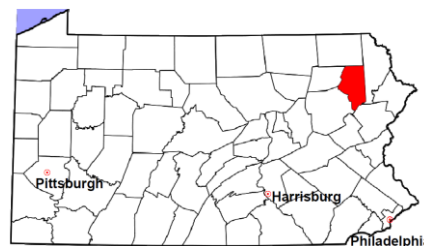
Data provided by CPCMS

# Lackawanna County

2012 Population Estimate: 214,477

Class of County: 3rd

No. of Common Pleas Court Judgeships: 9

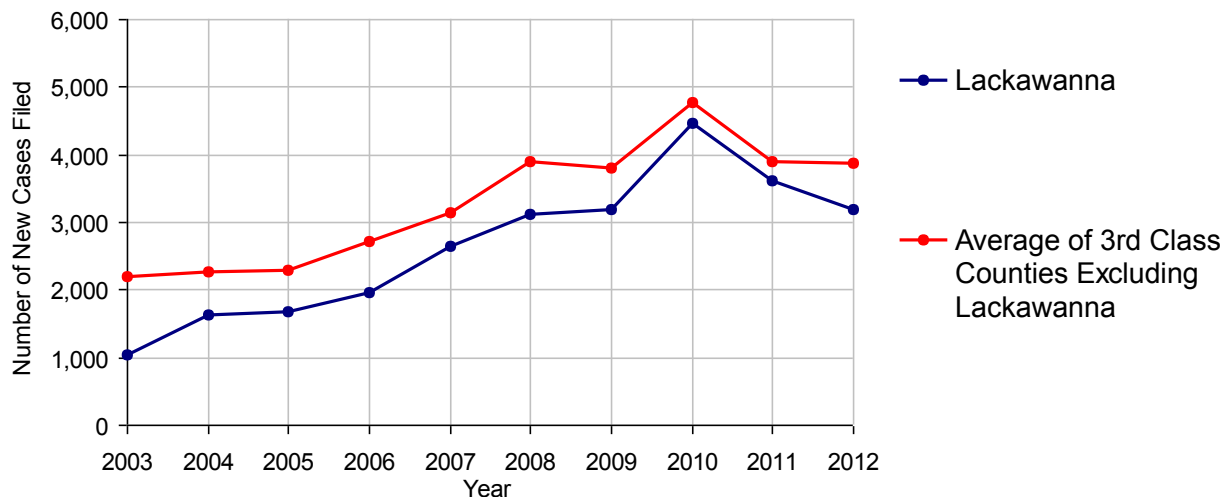


2012 Civil	Civil Action	Other	Total
Cases Pending 1/1/2012	2,938	1,780	4,718
Docketed Cases	2,017	1,166	3,183
Arbitration Appeals	27	0	27
Transferred In	185	0	185
Returned to Active	47	0	47
<b>Cases Available for Processing</b>	<b>5,214</b>	<b>2,946</b>	<b>8,160</b>
Disposed By:			
Default Judgments	119	41	160
Cases Decided by Arbitration Board	130	0	130
Dispositive Motions	289	118	407
Settlements	625	212	837
Moved to Inactive Status	0	0	0
Transferred/Withdrawn	123	33	156
Administrative Purge	0	0	0
Other	163	34	197
Jury Trial	27	0	27
Non-Jury Trial	5	0	5
<b>Total Cases Disposed</b>	<b>1,481</b>	<b>438</b>	<b>1,919</b>
<b>Cases Pending 12/31/2012</b>	<b>3,733</b>	<b>2,508</b>	<b>6,241</b>

## Age of Pending Cases as of 12/31/2012 (Civil Action Only)

0-6 months	1,998	53.5%
7-12 months	1,207	32.3%
13-18 months	317	8.5%
19-24 months	117	3.1%
25-30 months	72	1.9%
31-36 months	19	0.5%
37-42 months	2	0.1%
43-48 months	0	
49-54 months	1	<0.1%
55-60 months	0	
61-66 months	0	
67-72 months	0	
Over 72 months	0	
<b>Total</b>	<b>3,733</b>	<b>100.0%</b>

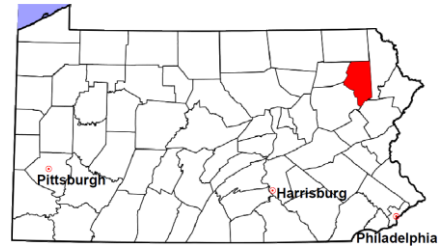
Docketed Cases, 2003-2012



Note: Prior to June 2010, docketed cases under the "Other" category were not reported. The inclusion of these cases starting from June 2010 may contribute to an increase in docketed cases from 2009 to 2010.

# Lackawanna County

2012 Population Estimate: 214,477  
 Class of County: 3rd  
 No. of Common Pleas Court Judgeships: 9



## 2012 Civil - Docketed Cases Listed by Case Type

<b>TORT</b>	<b>700</b>	<b>22.0%</b>
<i>(does not include mass tort)</i>		
Intentional	39	
Malicious Prosecution	2	
Motor Vehicle	374	
Nuisance	6	
Premise Liability	121	
Product Liability	10	
Slander/Libel/Defamation	2	
Other	146	
<b>MASS TORT</b>	<b>2</b>	<b>0.1%</b>
Asbestos	1	
Tobacco	0	
Toxic Tort - DES	0	
Toxic Tort - Implant	0	
Toxic Waste	0	
Other	1	
<b>PROFESSIONAL LIABILITY</b>	<b>41</b>	<b>1.3%</b>
Dental	2	
Legal	6	
Medical Malpractice	30	
Other	3	
<b>CONTRACT</b>	<b>1,253</b>	<b>39.4%</b>
<i>(does not include judgments)</i>		
Buyer Plaintiff	16	
Debt Collection: Credit Card	754	
Debt Collection: Other	248	
Employment Dispute:		
Employment Dispute: Discriminatio	14	
Employment Dispute: Other	13	
Other	208	

<b>REAL PROPERTY</b>	<b>763</b>	<b>24.0%</b>
Ejectment*	64	
Eminent Domain/Condemnation	4	
Ground Rent	0	
Landlord/Tenant Dispute	21	
Mortgage Foreclosure:		
Residential*	552	
Commercial*	14	
Partition of Real Property*	4	
Quiet Title*	57	
Other*	47	
<b>CIVIL APPEALS</b>	<b>180</b>	<b>5.7%</b>
<i>- Administrative Agencies</i>		
Board of Assessment*	28	
Board of Elections*	1	
Dept. of Transportation*	99	
Zoning Board*	8	
Statutory Appeal - Other*	0	
Other*	44	
<b>MISCELLANEOUS</b>	<b>244</b>	<b>7.7%</b>
Common Law/		
Statutory Arbitration*	1	
Declaratory Judgment*	15	
Mandamus*	4	
Non-Domestic Relations		
Restraining Order*	1	
Quo Warranto*	0	
Replevin*	13	
Other*	210	
<b>TOTAL DOCKETED CASES:</b>	<b>3,183</b>	<b>100%</b>

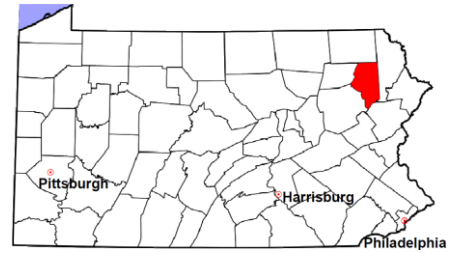
### Of the Docketed Cases:

Pro Se Filings: 0                      Class Action Suits: 0                      MDJ Appeals: 263    8.3%

\* Civil Other

# Lackawanna County

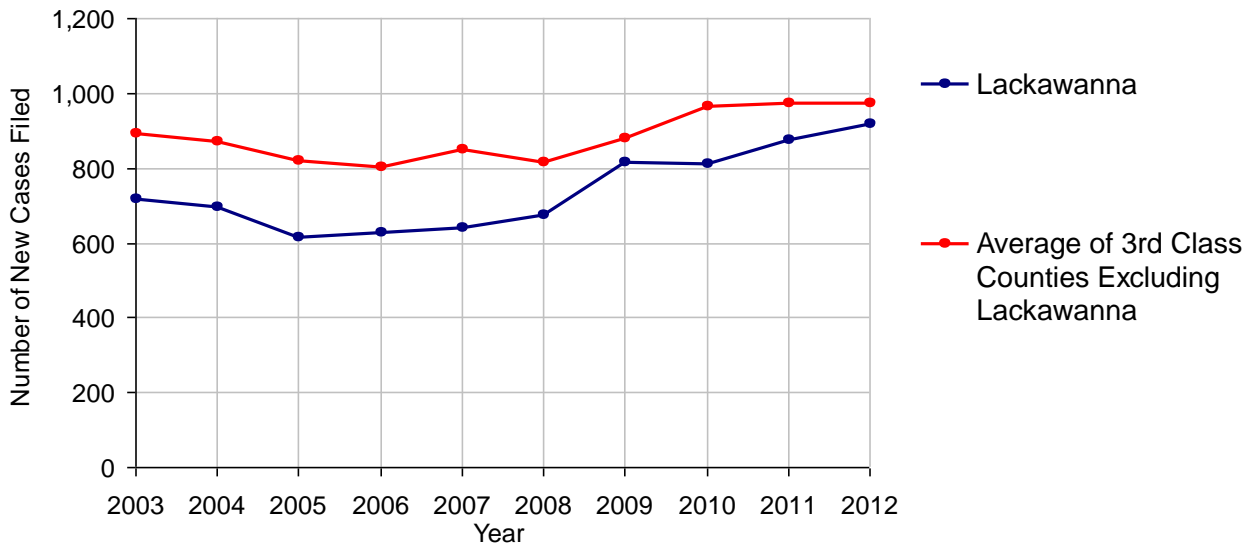
2012 Population Estimate: 214,477  
 Class of County: 3rd  
 No. of Common Pleas Court Judgeships: 9



## 2012 Protection From Abuse

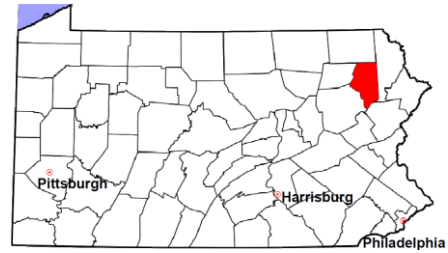
	<b>No. of Petitions</b>
Cases Pending 1/1/2012	275
New Cases Filed in 2012	920
<i>Of these, Petitions Requesting Temporary Orders: 920 (100.0%)</i>	
<i>Temporary Orders DENIED: 7 (0.8%), Temporary Orders GRANTED: 913 (99.2%)</i>	
<b>Cases Available for Processing</b>	<b>1,195</b>
Processed By:	
Temporary Order DENIED After Ex Parte Hearing and No Evidentiary Hearing Scheduled	3 0.4%
Temporary Order DISMISSED After Evidentiary Hearing and No Final Order Entered	13 1.8%
Final Order DENIED After Evidentiary Hearing Before a Judge	21 2.9%
Final Order GRANTED After Evidentiary Hearing Before a Judge	106 14.5%
Plaintiff Did Not Appear For Evidentiary Hearing	78 10.6%
Final Order by STIPULATION OR AGREEMENT Between the Parties	240 32.7%
Petition WITHDRAWN by Plaintiff	272 37.1%
TRANSFERRED to Another Jurisdiction	0
DECEASED Party	0
Other	0
<b>Cases Processed</b>	<b>733 100.0%</b>
<b>Cases Pending 12/31/2012</b>	<b>462</b>

**PFA New Cases Filed, 2003-2012**



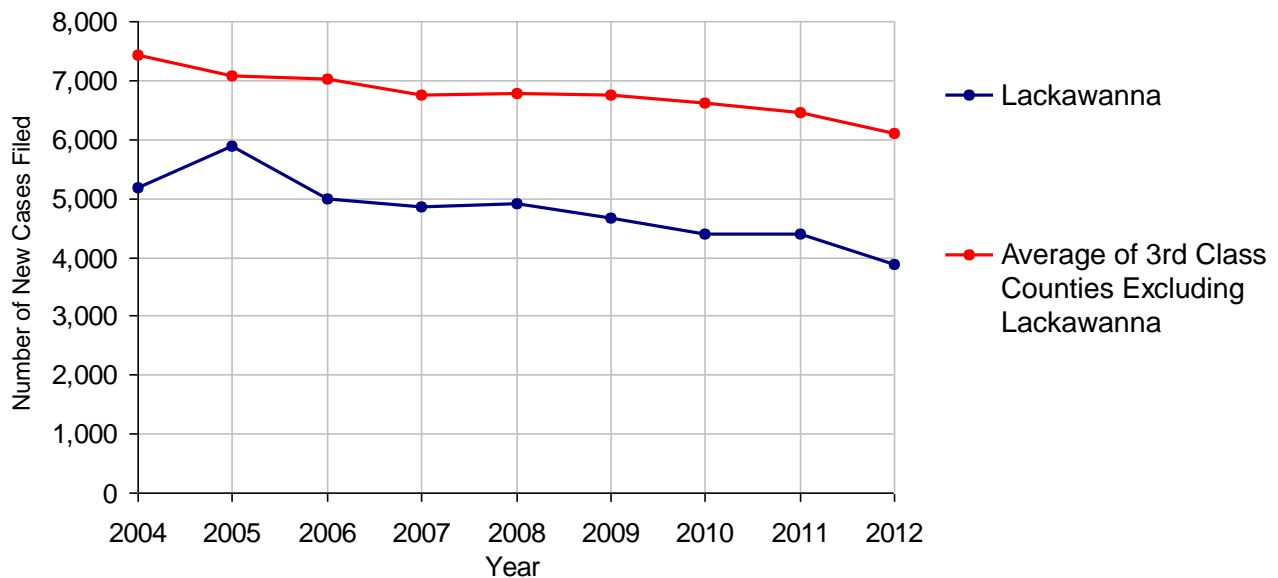
# Lackawanna County

2012 Population Estimate: 214,477  
 Class of County: 3rd  
 No. of Common Pleas Court Judgeships: 9



<b>2012 Spousal &amp; Child Support</b>	<b>No. of Petitions</b>	
Cases Pending 1/1/2012	760	
New Cases Filed in 2012	3,889	
Dockets Transferred In (+)	39	
Dockets Transferred Out (-)	56	
<b>Cases Available for Processing</b>	<b>4,632</b>	
Processed By:		
Judge	8	0.2%
Intake Officer	3,644	97.4%
Hearing Officer	88	2.4%
Other	3	0.1%
<b>Cases Processed</b>	<b>3,743</b>	<b>100.0%</b>
<b>Cases Pending 12/31/2012</b>	<b>889</b>	

**Spousal & Child Support New Cases Filed, 2004-2012**

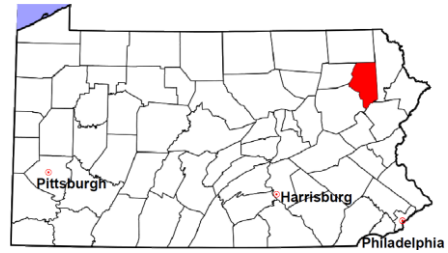


# Lackawanna County

2012 Population Estimate: 214,477

Class of County: 3rd

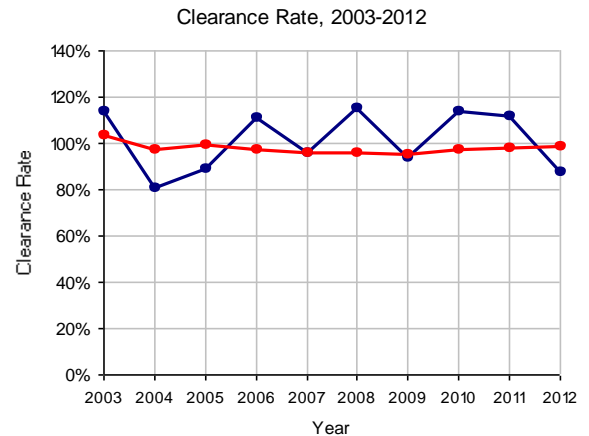
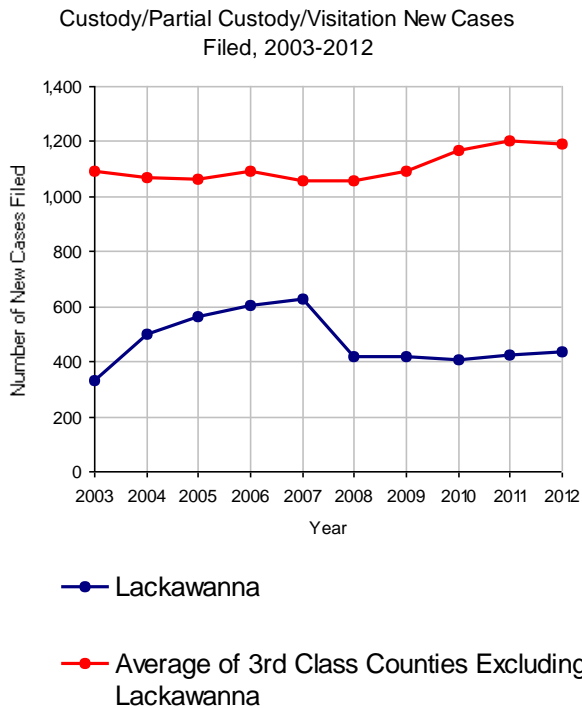
No. of Common Pleas Court Judgeships: 9



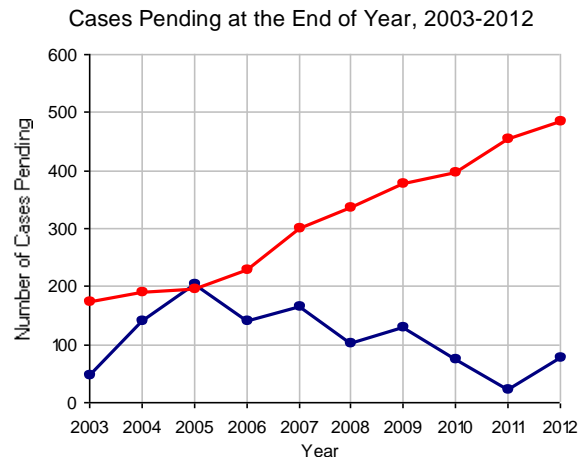
## 2012 Custody/Partial Custody/Visitation

No. of Petitions

Cases Pending 1/1/2012	22
New Cases Filed in 2012	434
<b>Cases Available for Processing</b>	<b>456</b>
Processed By:	
Judge	36 9.5%
Non-Judicial Officer	297 78.4%
Other	46 12.1%
<b>Cases Processed</b>	<b>379 100.0%</b>
<b>Cases Pending 12/31/2012</b>	<b>77</b>

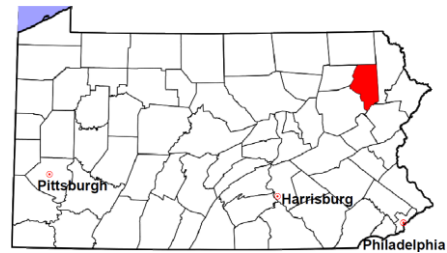


Note: Clearance Rate = Cases Processed / New Cases Filed



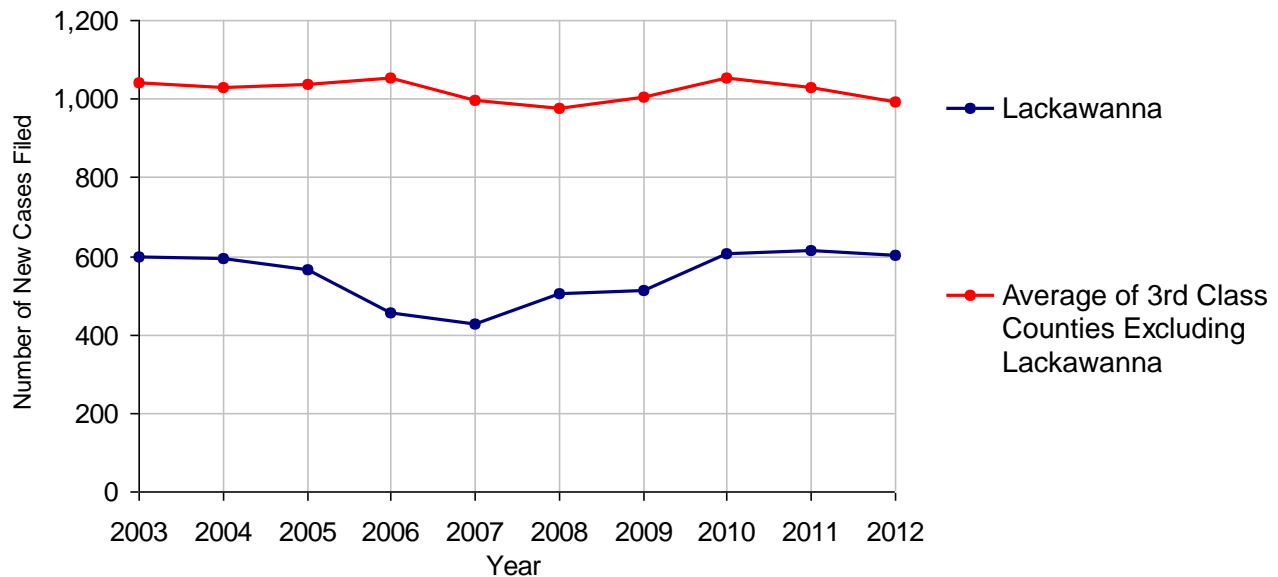
# Lackawanna County

2012 Population Estimate: 214,477  
 Class of County: 3rd  
 No. of Common Pleas Court Judgeships: 9



<b>2012 Divorce</b>	<b>No. of Petitions</b>	
Cases Pending 1/1/2012	230	
New Cases Filed in 2012	604	
<b>Cases Available for Processing</b>	<b>834</b>	
Processed By:		
Contested Before a Judge	0	
Contested Before a Master	60	11.1%
Uncontested	481	88.9%
Other	0	
<b>Cases Processed</b>	<b>541</b>	<b>100.0%</b>
<b>Cases Pending 12/31/2012</b>	<b>293</b>	

**Divorce New Cases Filed, 2003-2012**



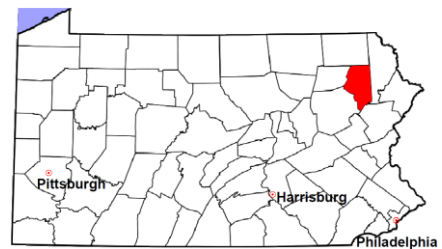


# Lackawanna County

2012 Population Estimate: 214,477

Class of County: 3rd

No. of Common Pleas Court Judgeships: 9



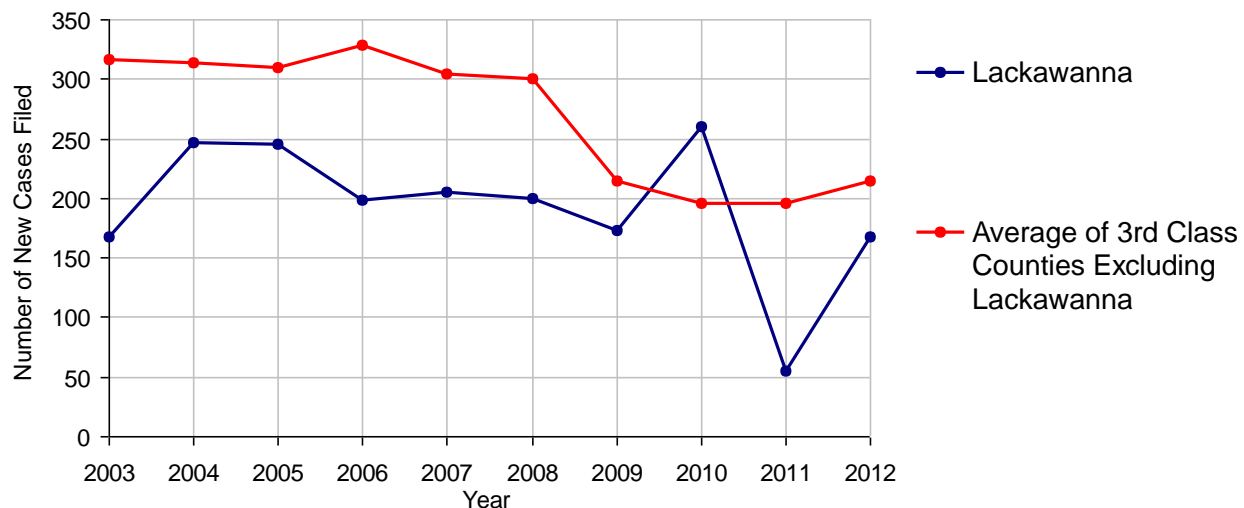
## 2012 Juvenile Dependency - Active Dependent Inventory



	Abuse/ Neglect	Status Offenses	Total
Cases Pending 1/1/2012	65	5	70
New Petitions Filed in 2012	152	15	167
Other	4	0	4
<b>Total Petitions Available for Processing</b>	<b>221</b>	<b>20</b>	<b>241</b>
Processed by:			
Adjudicated Dependent			
Judge	110	12	122
Master	0	0	0
Adjudicated NOT Dependent			
Judge	5	1	6
Master	0	0	0
Withdrawn/Dismissed/Inactive	0	0	0
Other	10	0	10
<b>Total Petitions Processed</b>	<b>125</b>	<b>13</b>	<b>138</b>
<b>Cases Pending 12/31/2012</b>	<b>96</b>	<b>7</b>	<b>103</b>

Data provided by CPCMS

Abuse/Neglect and Status Offenses New Cases Filed, 2003-2012



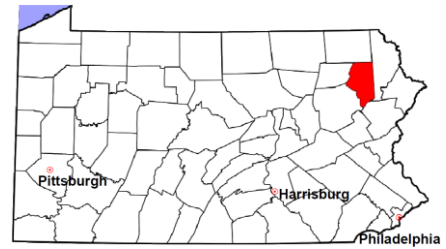
Note: (1) Dependency data for 2002-2010 were collected manually. Dependency data for 2011 and 2012 were provided by CPCMS. (2) A sharp increase or decrease may reflect changes in practice or counting methods.

# Lackawanna County

2012 Population Estimate: 214,477

Class of County: 3rd

No. of Common Pleas Court Judgeships: 9



## 2012 Juvenile Dependency - Adjudicated Dependent Inventory



	Abuse/ Neglect	Status Offenses	Total
Cases Pending 1/1/2012	327	17	344
New Adjudicated Dependent Cases	110	12	122
Other	43	1	44
<b>Total Adjudicated Dependent Cases</b>	<b>480</b>	<b>30</b>	<b>510</b>

### Court Supervision Terminated:

Family Reunification	2	1.8%	0	2	1.8%
Adoption	23	21.1%	0	23	20.2%
Placement with a Relative/Guardian	62	56.9%	4	66	57.9%
Aged Out	5	4.6%	0	5	4.4%
Other Permanency Outcomes*	1	0.9%	0	1	0.9%
Other**	16	14.7%	1	17	14.9%
<b>Total Adjudicated Dependent Cases Terminated</b>	<b>109</b>	<b>100.0%</b>	<b>5</b>	<b>114</b>	<b>100.0%</b>
<b>Cases Pending 12/31/2012</b>	<b>371</b>		<b>25</b>	<b>396</b>	

Data provided by CPCMS

\* Other Permanency Outcomes include: adjudicated delinquent, death due to natural causes, death due to negligence, emancipation, permanent living arrangement, and parent has come forward.

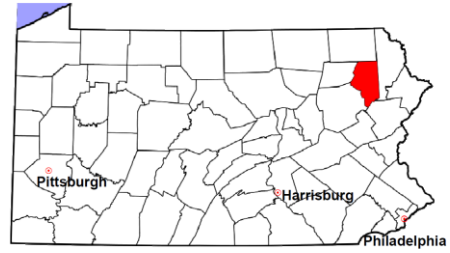
\*\* Other includes cases where court supervision is terminated due to transfer out of jurisdiction, withdrawal and administrative closure.

# Lackawanna County

2012 Population Estimate: 214,477

Class of County: 3rd

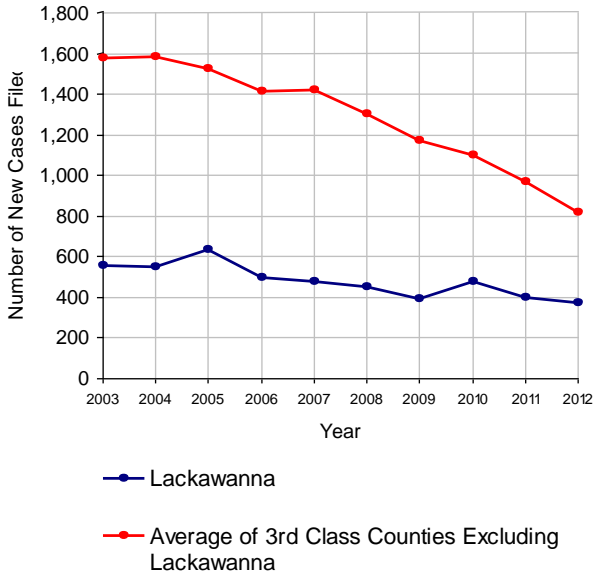
No. of Common Pleas Court Judgeships: 9



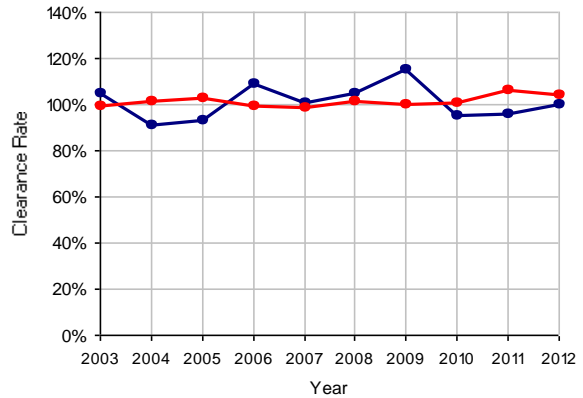
## 2012 Juvenile Delinquency

	No. of Cases	
Cases Pending 1/1/2012	283	
New Cases Filed in 2012	370	
<b>Cases Available for Processing</b>	<b>653</b>	
Processed By:		
Judge	137	37.1%
Non-Judicial Officer	170	46.1%
Other	62	16.8%
<b>Cases Processed</b>	<b>369</b>	<b>100.0%</b>
<b>Cases Pending 12/31/2012</b>	<b>284</b>	

Juvenile Delinquency New Cases Filed, 2003-2012

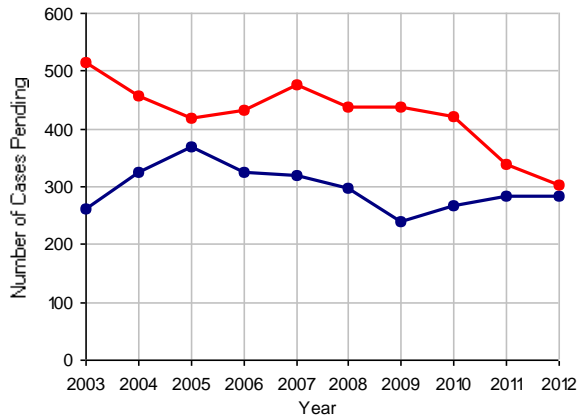


Clearance Rate, 2003-2012



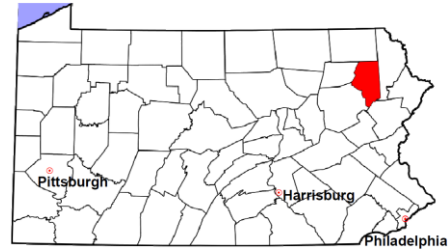
Note: Clearance Rate = Cases Processed / New Cases Filed

Cases Pending at the End of Year, 2003-2012



# Lackawanna County

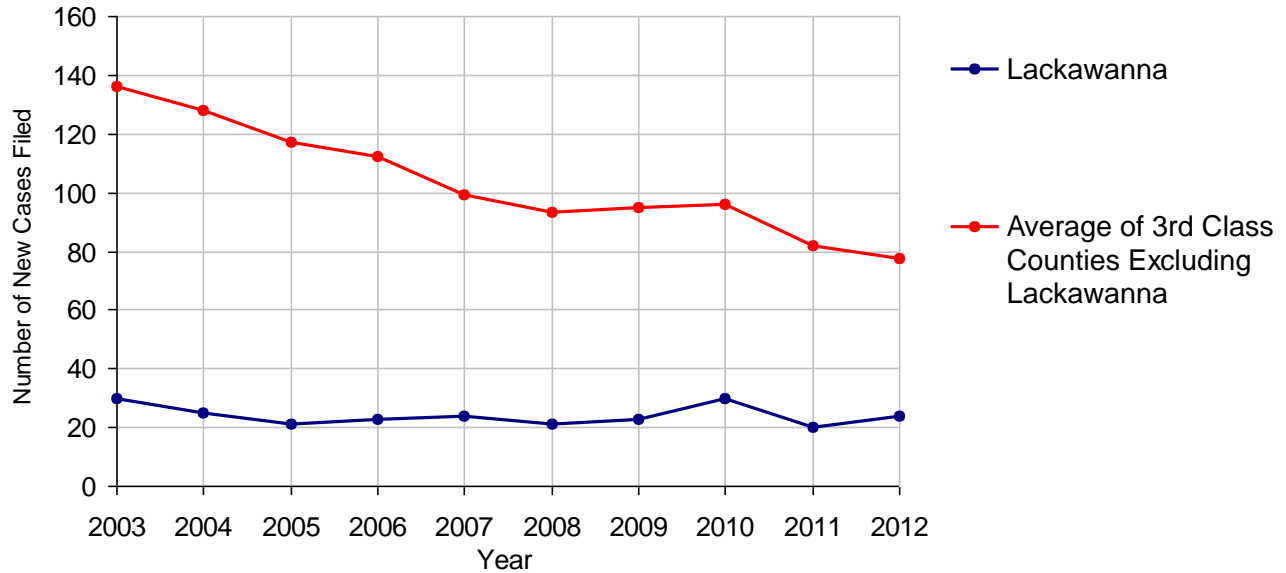
2012 Population Estimate: 214,477  
 Class of County: 3rd  
 No. of Common Pleas Court Judgeships: 9



## 2012 Accounts

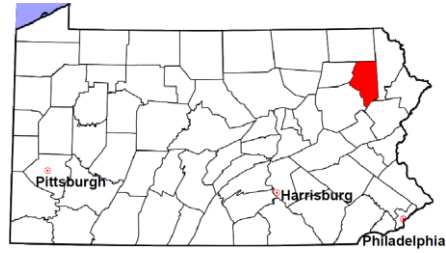
	No. of Cases	
Cases Pending 1/1/2012	20	
New Cases Filed in 2012	24	
<b>Cases Available for Processing</b>	<b>44</b>	
Processed By:		
Contested before a Judge	4	17.4%
Contested before a Non-judicial Officer	0	
Uncontested	15	65.2%
Other	4	17.4%
<b>Cases Processed</b>	<b>23</b>	<b>100.0%</b>
<b>Cases Pending 12/31/2012</b>	<b>21</b>	

Accounts New Cases Filed, 2003-2012



# Lackawanna County

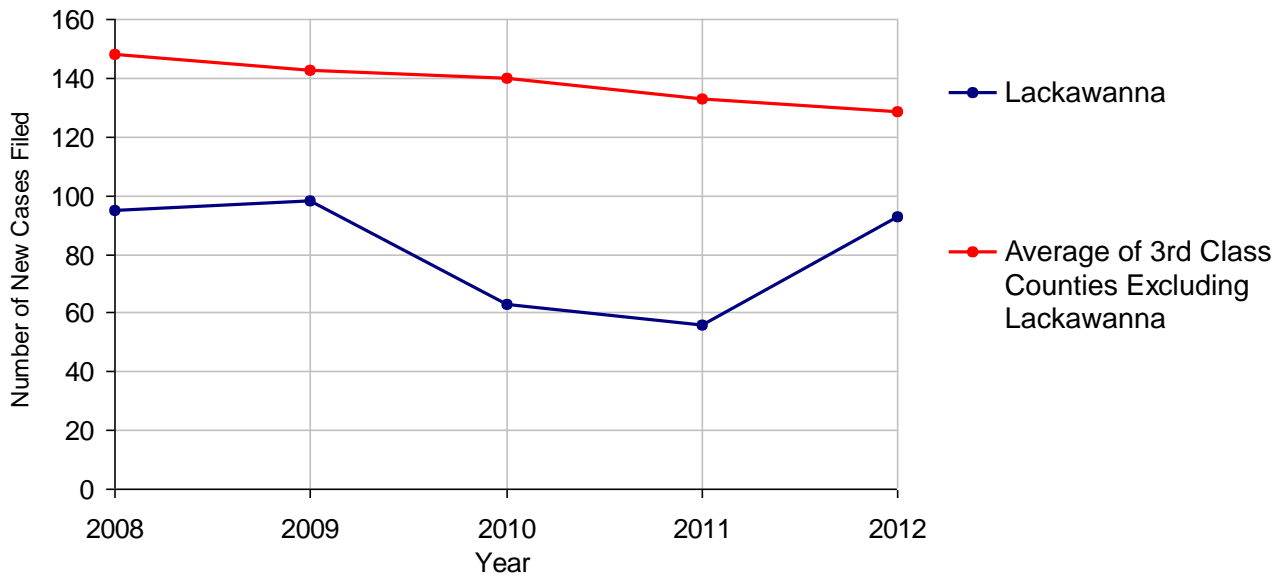
2012 Population Estimate: 214,477  
 Class of County: 3rd  
 No. of Common Pleas Court Judgeships: 9



## 2012 Adoptions

		No. of Cases	
Cases Pending 1/1/2012		21	
New Cases Filed in 2012		93	
<b>Cases Available for Processing</b>		<b>114</b>	
Processed By:			
Contested before a Judge	Granted	1	0.9%
	Denied	0	
Uncontested	Granted	100	93.5%
	Denied	0	
Other		6	5.6%
<b>Cases Processed</b>		<b>107</b>	<b>100.0%</b>
<b>Cases Pending 12/31/2012</b>		<b>7</b>	

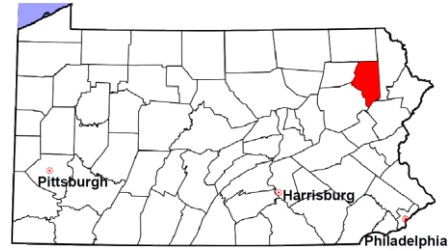
Adoptions New Cases Filed, 2008-2012



Note: Prior to 2008, each petition was counted as one new case, regardless of the number of children listed on the petition. Starting in 2008, each child listed on a petition is counted as a separate case. Therefore, statistics since 2008 should not be compared to statistics prior to 2008.

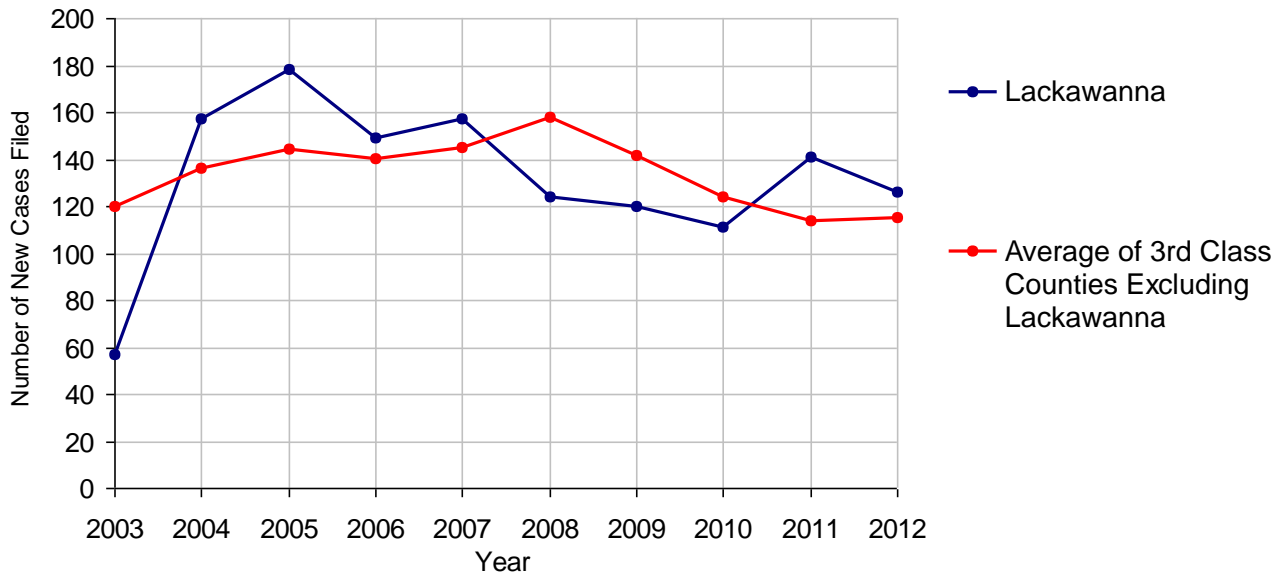
# Lackawanna County

2012 Population Estimate: 214,477  
 Class of County: 3rd  
 No. of Common Pleas Court Judgeships: 9



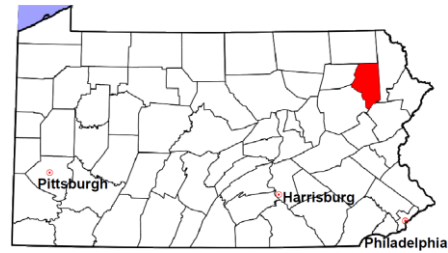
2012 Relinquishments/Terminations	No. of Cases
Cases Pending 1/1/2012	64
New Cases Filed in 2012	126
<b>Cases Available for Processing</b>	<b>190</b>
Processed By:	
Contested before a Judge	1      0.7%
Uncontested	128    85.3%
Other	21     14.0%
<b>Cases Processed</b>	<b>150    100.0%</b>
<b>Cases Pending 12/31/2012</b>	<b>40</b>

**Relinquishments/Terminations New Cases Filed, 2003-2012**



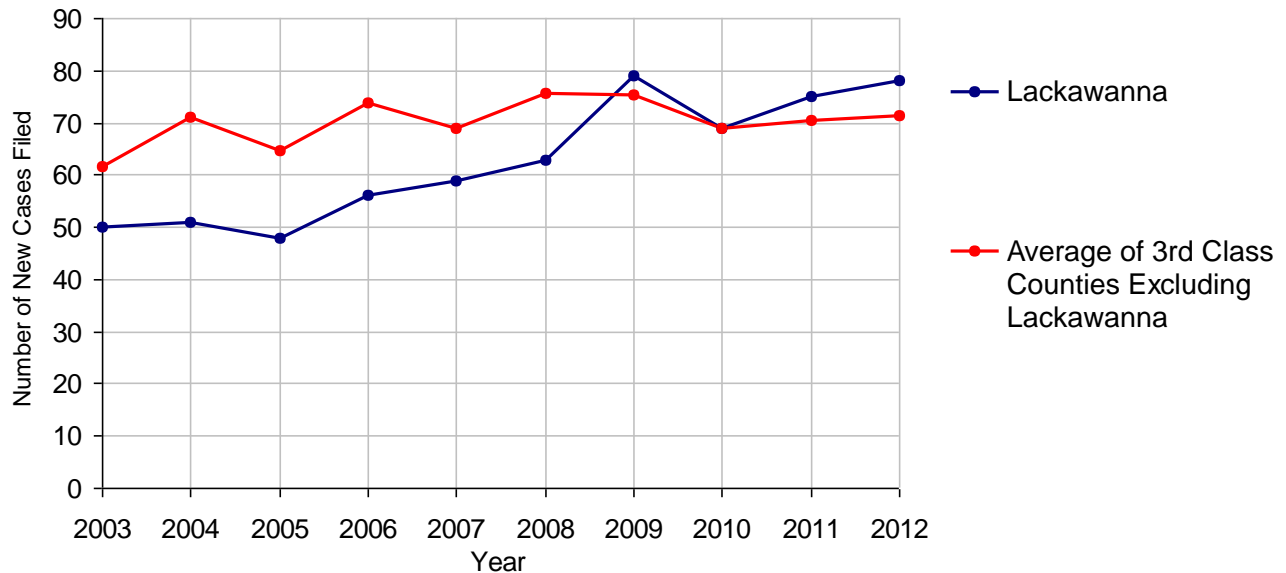
# Lackawanna County

2012 Population Estimate: 214,477  
 Class of County: 3rd  
 No. of Common Pleas Court Judgeships: 9



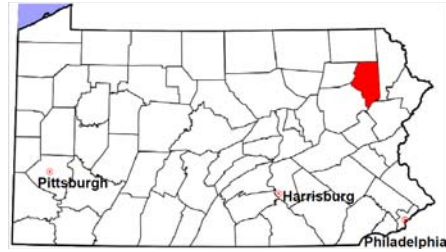
<b>2012 Appointment of Guardians</b>	<b>No. of Cases</b>
Cases Pending 1/1/2012	49
New Cases Filed in 2012	78
<b>Cases Available for Processing</b>	<b>127</b>
Processed By:	
Contested before a Judge	0
Uncontested	65    66.3%
Other	33    33.7%
<b>Cases Processed</b>	<b>98    100.0%</b>
<b>Cases Pending 12/31/2012</b>	<b>29</b>

**Appointment of Guardians New Cases Filed, 2003-2012**



# Lackawanna County

2012 Population Estimate: 214,477  
 Class of County: 3rd  
 No. of Common Pleas Court Judgeships: 9



## 2012 Jury Yield and Utilization

### Jury Yield

Qualification Questionnaires/Summonses Mailed:	27,400	A		
Returned Undeliverable:	3,684	B	13.4%	Of Qualification Questionnaires/Summonses Mailed
Not Responded to:	0	C		
the Number of Prospective Jurors:				
Disqualified:	6,698	D	24.4%	
Exempted:	1,641	E	6.0%	
Excused:	683	F	2.5%	
Deferred to New Term:	1,179	G	4.3%	
Deferred from Previous Term:	1,051	H	3.8%	
<b>Total Number of Qualified Jurors Available for Service:</b>	<b>14,566</b>	<b>I</b>	<b>53.2%</b>	

$I = A - B - C - D - E - F - G + H$

### Jury Utilization

the Number of Jurors:			
Reporting for Service:	3,008	20.7%	Of Jurors Qualified and Available
Told Not to Report for Service:	5,429	37.3%	
Sent to Courtroom for Jury Selection (Voir Dire):	2,325	77.3%	Of Jurors Reporting for Service
Impanelled or Sworn (jurors/alternates):	585	19.4%	
Removed for Cause/Hardship:	381		
Removed by Peremptory Challenge:	475		

### Jury Costs

Total Annual Budget for Juror Operations:	\$134,006.00	J
Average Cost Per Juror:	\$4.89	K

$K = J/A$

In mid-2011, AOPC began utilizing the National Center for State Courts' Jury Managers' Toolbox for collecting jury data. In 2012, the counties began providing additional jury data which included information about the summoning practices in the counties. With this additional data, we can now see not only how many citizens come to our courthouses every day in anticipation of serving on a jury, but the number of citizens actually summonsed and the number of those summonsed who are exempt, excused or disqualified from service. With this wider view of the jury process, we can determine the efficiency with which our courts operate, and with the assistance of the Jury Managers' Toolbox find guidance in streamlining the jury summoning practices.