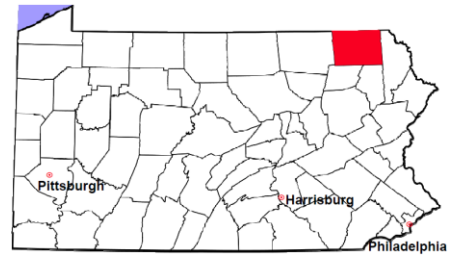


Susquehanna County

2012 Population Estimate: 42,696

Class of County: 6th

No. of Common Pleas Court Judgeships: 1



2012 Criminal	No. of Cases
----------------------	---------------------

Cases Pending 1/1/2012	189
New Cases Filed in 2012	542
Reopened Cases	15
Cases Available for Disposition	746
Disposed by:	
Withdrawn/Dismissed	29 5.4%
ARD	113 21.0%
Guilty Plea	376 69.9%
Non-Jury Trial	0
Jury Trial	3 0.6%
Inactive	8 1.5%
Other	9 1.7%
Total Cases Disposed	538 100.0%
Cases Pending 12/31/2012	208
Cases Awaiting Sentencing	26

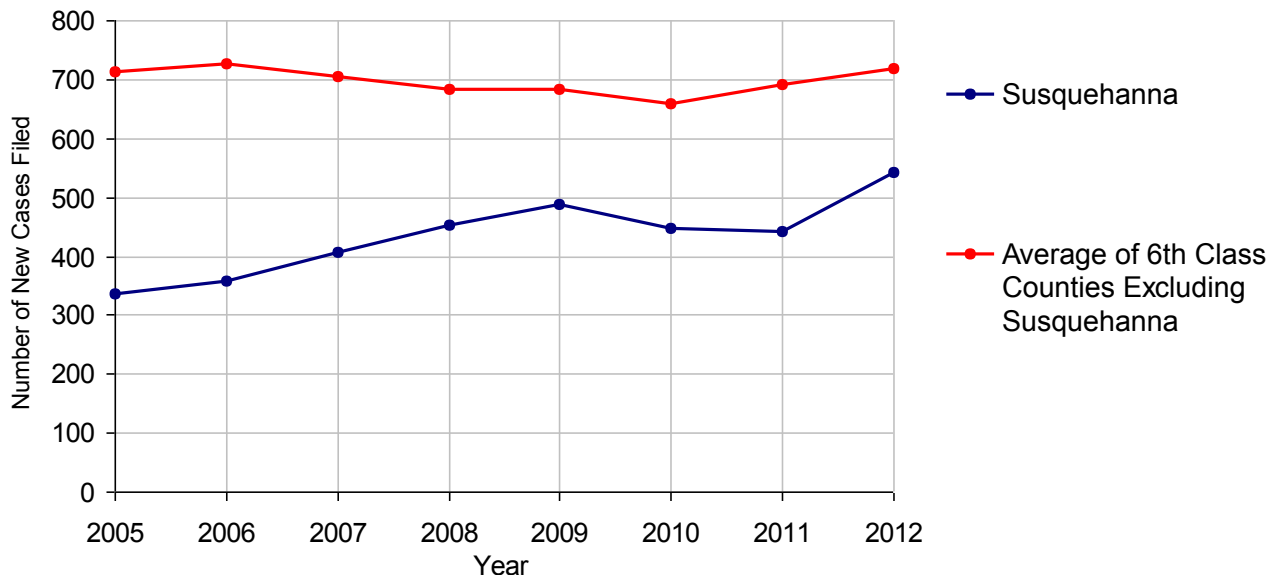


Age of Pending Cases as of 12/31/2012

0-60 Days	65	31.3%
61-120 Days	55	26.4%
121-180 Days	23	11.1%
181-240 Days	26	12.5%
241-300 Days	13	6.3%
301-360 Days	9	4.3%
Over 360 Days	17	8.2%
Total	208	100.0%

Data provided by CPCMS

Criminal New Cases Filed, 2005-2012

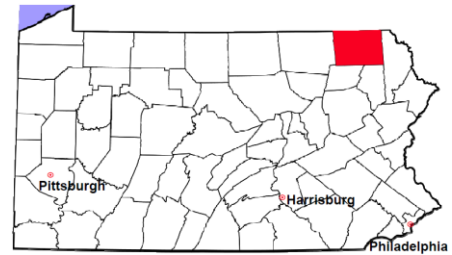


Susquehanna County

2012 Population Estimate: 42,696

Class of County: 6th

No. of Common Pleas Court Judgeships: 1



2012 Criminal - New Cases by Case Type



Case Type	Felony	Misdemeanor	Summary /Ungraded	Total
Person	48	22	0	70
Property	172	47	0	219
Drug	31	20	0	51
Weapon	1	1	0	2
Public Order	15	26	0	41
Motor Vehicle - DWI/DUI	0	154	0	154
Motor Vehicle - Other	0	1	0	1
Other	4	0	0	4
Total	271	271	0	542
	50.0%	50.0%		100.0%

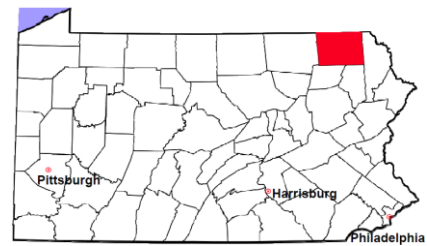
Data provided by CPCMS

Susquehanna County

2012 Population Estimate: 42,696

Class of County: 6th

No. of Common Pleas Court Judgeships: 1

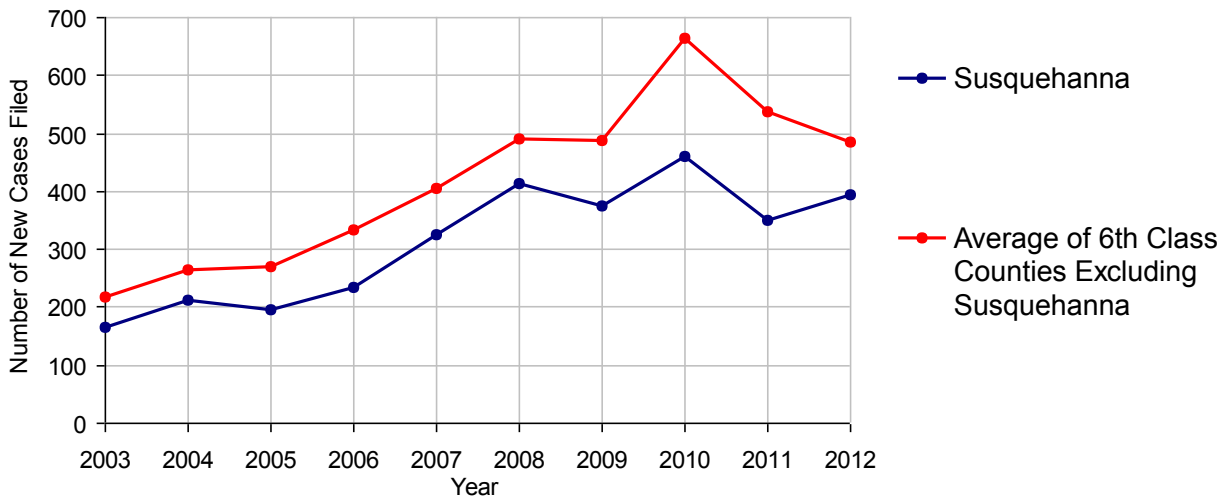


2012 Civil	Civil Action	Other	Total
Cases Pending 1/1/2012	188	168	356
Docketed Cases	231	163	394
Arbitration Appeals	7	0	7
Transferred In	0	0	0
Returned to Active	0	0	0
Cases Available for Processing	426	331	757
Disposed By:			
Default Judgments	70	57	127
Cases Decided by Arbitration Board	0	0	0
Dispositive Motions	0	0	0
Settlements	24	25	49
Moved to Inactive Status	1	0	1
Transferred/Withdrawn	1	1	2
Administrative Purge	7	6	13
Other	12	18	30
Jury Trial	2	0	2
Non-Jury Trial	0	0	0
Total Cases Disposed	117	107	224
Cases Pending 12/31/2012	309	224	533

Age of Pending Cases as of 12/31/2012 (Civil Action Only)

0-6 months	102	33.0%
7-12 months	80	25.9%
13-18 months	47	15.2%
19-24 months	40	12.9%
25-30 months	40	12.9%
31-36 months	0	
37-42 months	0	
43-48 months	0	
49-54 months	0	
55-60 months	0	
61-66 months	0	
67-72 months	0	
Over 72 months	0	
Total	309	100.0%

Docketed Cases, 2003-2012



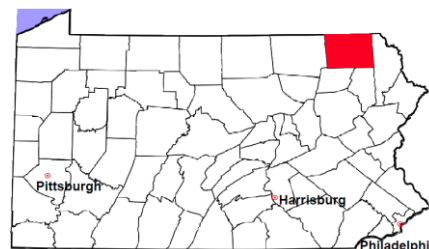
Note: Prior to June 2010, docketed cases under the "Other" category were not reported. The inclusion of these cases starting from June 2010 may contribute to an increase in docketed cases from 2009 to 2010.

Susquehanna County

2012 Population Estimate: 42,696

Class of County: 6th

No. of Common Pleas Court Judgeships: 1



2012 Civil - Docketed Cases Listed by Case Type

TORT 40 10.2%

(does not include mass tort)

Intentional	1
Malicious Prosecution	0
Motor Vehicle	22
Nuisance	2
Premise Liability	7
Product Liability	0
Slander/Libel/Defamation	0
Other	8

MASS TORT 0

Asbestos	0
Tobacco	0
Toxic Tort - DES	0
Toxic Tort - Implant	0
Toxic Waste	0
Other	0

PROFESSIONAL LIABILITY 6 1.5%

Dental	0
Legal	0
Medical Malpractice	6
Other	0

CONTRACT 182 46.2%

(does not include judgments)

Buyer Plaintiff	2
Debt Collection: Credit Card	101
Debt Collection: Other	65
Employment Dispute:	
Employment Dispute: Discriminatio	0
Employment Dispute: Other	2
Other	12

REAL PROPERTY 111 28.2%

Ejectment*	4
Eminent Domain/Condemnation	2
Ground Rent	0
Landlord/Tenant Dispute	3
Mortgage Forclosures:	
Residential*	78
Commercial*	1
Partition of Real Property*	3
Quiet Title*	17
Other*	3

CIVIL APPEALS 31 7.9%

- Administrative Agencies

Board of Assessment*	0
Board of Elections*	0
Dept. of Transportation*	9
Zoning Board*	1
Statutory Appeal - Other*	2
Other*	19

MISCELLANEOUS 24 6.1%

Common Law/	
Statutory Arbitration*	0
Declaratory Judgment*	3
Mandamus*	0
Non-Domestic Relations	
Restraining Order*	0
Quo Warranto*	0
Replevin*	3
Other*	18

TOTAL DOCKETED CASES: 394 100%

Of the Docketed Cases:

Pro Se Filings:	8	2.0%	Class Action Suits:	0	MDJ Appeals:	28	7.1%
-----------------	---	------	---------------------	---	--------------	----	------

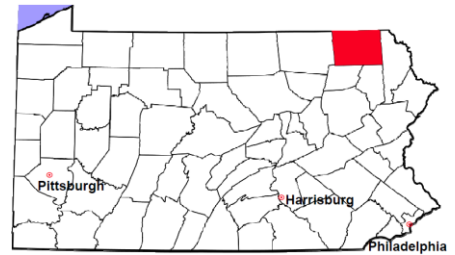
* Civil Other

Susquehanna County

2012 Population Estimate: 42,696

Class of County: 6th

No. of Common Pleas Court Judgeships: 1



2012 Protection From Abuse

**No. of
Petitions**

Cases Pending 1/1/2012 14

New Cases Filed in 2012 161

Of these, Petitions Requesting Temporary Orders: 161 (100.0%)

Temporary Orders DENIED: 20 (12.4%), Temporary Orders GRANTED: 141 (87.6%)

Cases Available for Processing

175

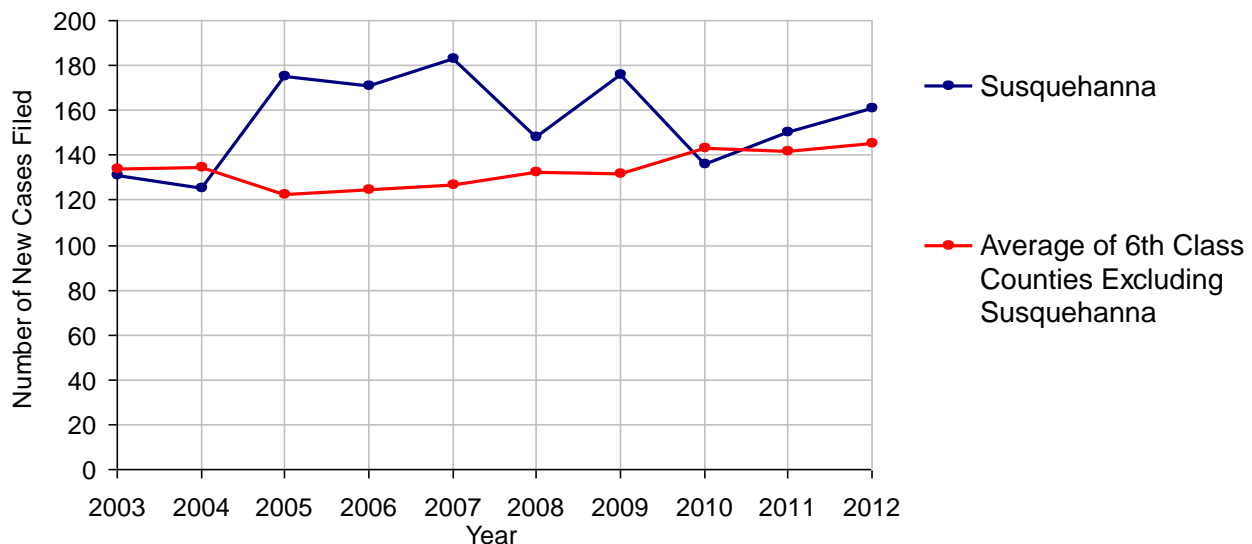
Processed By:

Temporary Order DENIED After Ex Parte Hearing and No Evidentiary Hearing Scheduled	22	13.9%
Temporary Order DISMISSED After Evidentiary Hearing and No Final Order Entered	3	1.9%
Final Order DENIED After Evidentiary Hearing Before a Judge	9	5.7%
Final Order GRANTED After Evidentiary Hearing Before a Judge	59	37.3%
Plaintiff Did Not Appear For Evidentiary Hearing	3	1.9%
Final Order by STIPULATION OR AGREEMENT Between the Parties	31	19.6%
Petition WITHDRAWN by Plaintiff	30	19.0%
TRANSFERRED to Another Jurisdiction	0	
DECEASED Party	0	
Other	1	0.6%

Cases Processed 158 100.0%

Cases Pending 12/31/2012 17

PFA New Cases Filed, 2003-2012

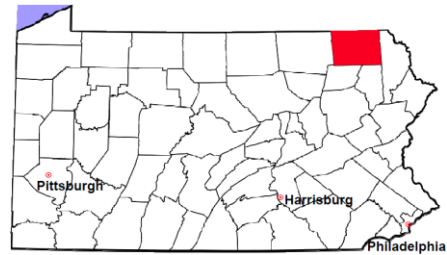


Susquehanna County

2012 Population Estimate: 42,696

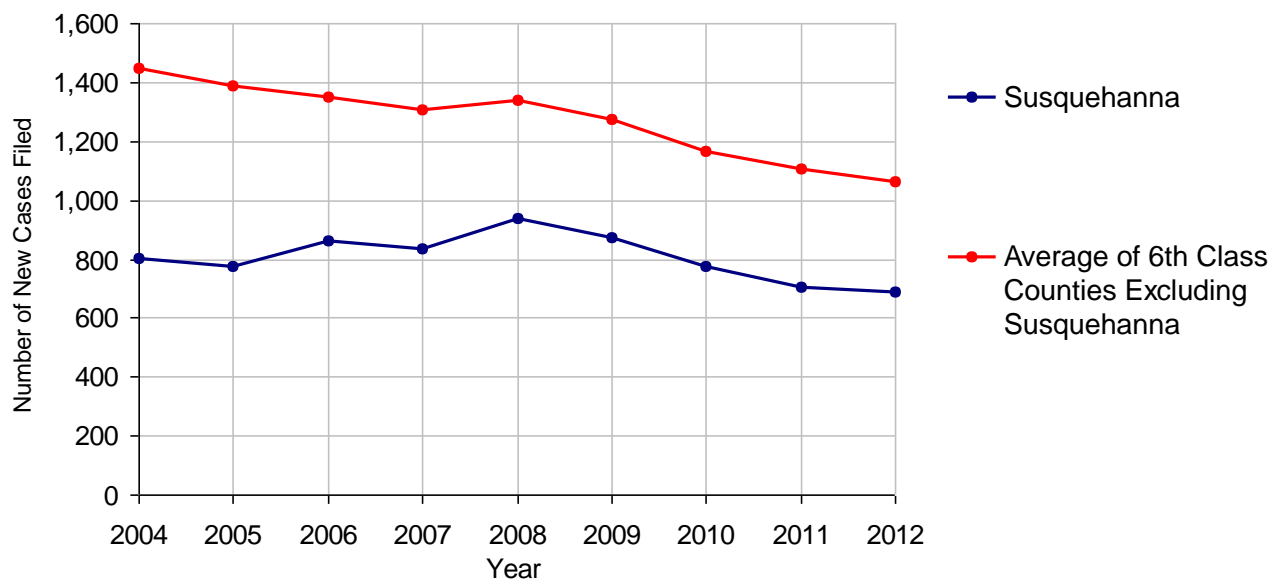
Class of County: 6th

No. of Common Pleas Court Judgeships: 1



2012 Spousal & Child Support	No. of Petitions	
Cases Pending 1/1/2012	103	
New Cases Filed in 2012	691	
Dockets Transferred In (+)	10	
Dockets Transferred Out (-)	9	
Cases Available for Processing	795	
Processed By:		
Judge	10	1.4%
Intake Officer	626	89.0%
Hearing Officer	67	9.5%
Other	0	
Cases Processed	703	100.0%
Cases Pending 12/31/2012	92	

Spousal & Child Support New Cases Filed, 2004-2012

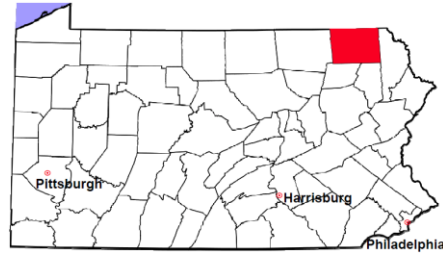


Susquehanna County

2012 Population Estimate: 42,696

Class of County: 6th

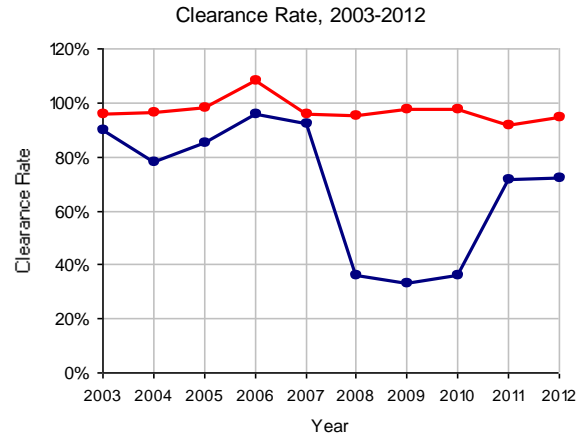
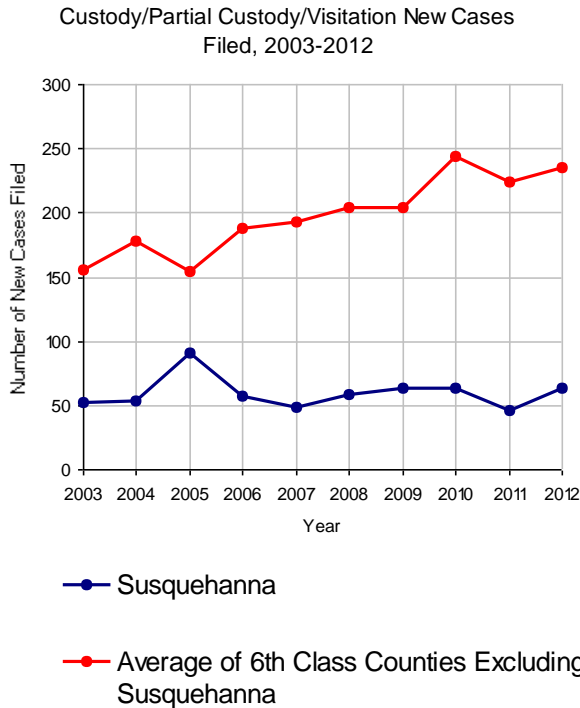
No. of Common Pleas Court Judgeships: 1



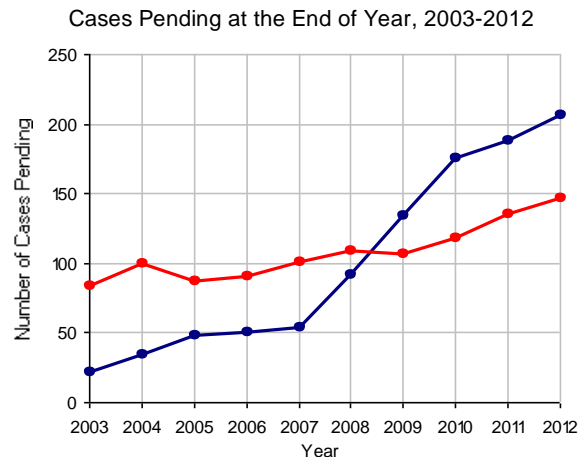
2012 Custody/Partial Custody/Visitation

No. of Petitions

Cases Pending 1/1/2012	188
New Cases Filed in 2012	64
Cases Available for Processing	252
Processed By:	
Judge	34 73.9%
Non-Judicial Officer	2 4.3%
Other	10 21.7%
Cases Processed	46 100.0%
Cases Pending 12/31/2012	206

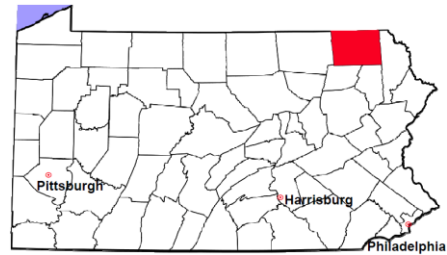


Note: Clearance Rate = Cases Processed / New Cases Filed



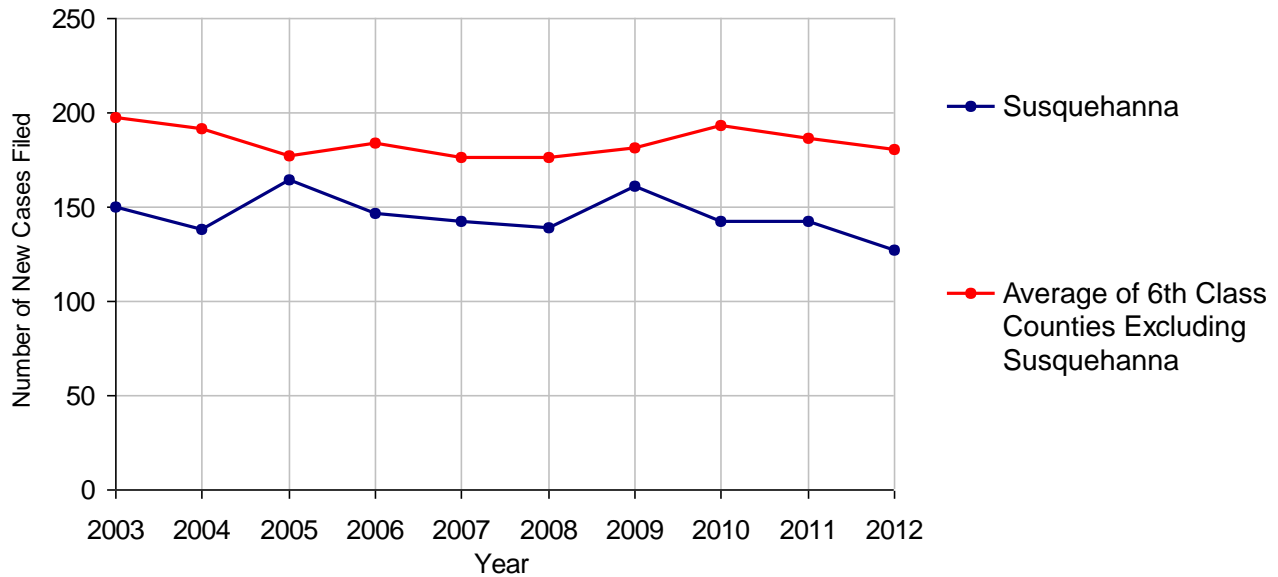
Susquehanna County

2012 Population Estimate: 42,696
 Class of County: 6th
 No. of Common Pleas Court Judgeships: 1



2012 Divorce	No. of Petitions	
Cases Pending 1/1/2012	277	
New Cases Filed in 2012	127	
Cases Available for Processing	404	
Processed By:		
Contested Before a Judge	57	40.7%
Contested Before a Master	17	12.1%
Uncontested	42	30.0%
Other	24	17.1%
Cases Processed	140	100.0%
Cases Pending 12/31/2012	264	

Divorce New Cases Filed, 2003-2012

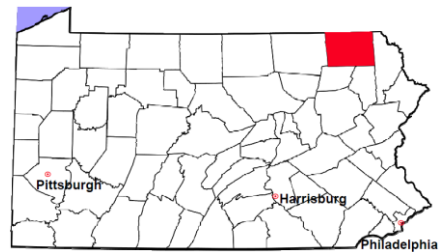


Susquehanna County

2012 Population Estimate: 42,696

Class of County: 6th

No. of Common Pleas Court Judgeships: 1



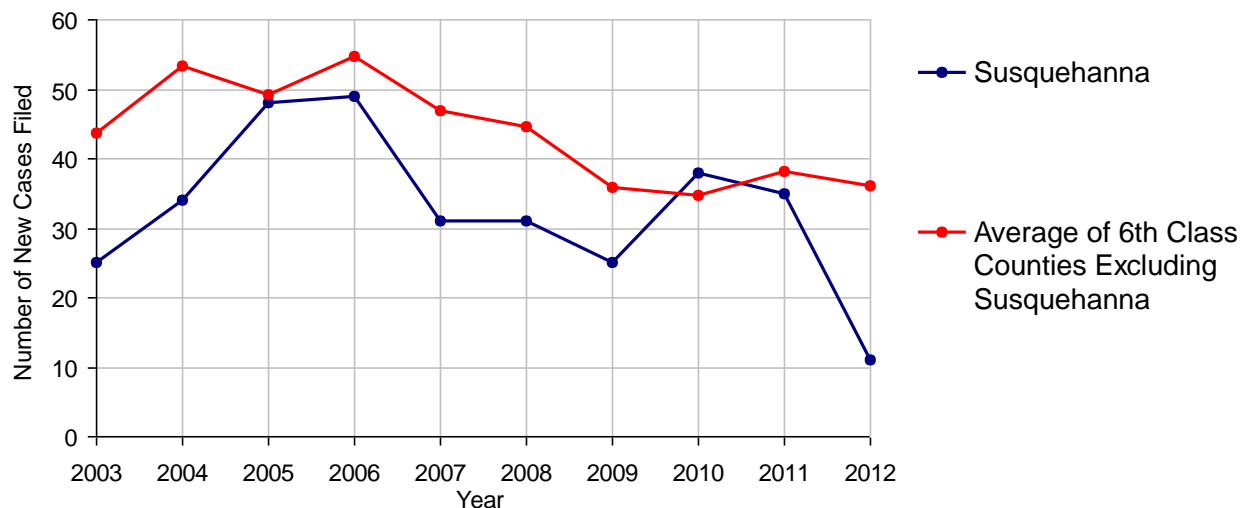
2012 Juvenile Dependency - Active Dependent Inventory



	Abuse/ Neglect	Status Offenses	Total
Cases Pending 1/1/2012	0	0	0
New Petitions Filed in 2012	9	2	11
Other	1	0	1
Total Petitions Available for Processing	10	2	12
Processed by:			
Adjudicated Dependent			
Judge	9	1	10
Master	0	0	0
Adjudicated NOT Dependent			
Judge	0	0	0
Master	0	0	0
Withdrawn/Dismissed/Inactive	0	0	0
Other	1	1	2
Total Petitions Processed	10	2	12
Cases Pending 12/31/2012	0	0	0

Data provided by CPCMS

Abuse/Neglect and Status Offenses New Cases Filed, 2003-2012



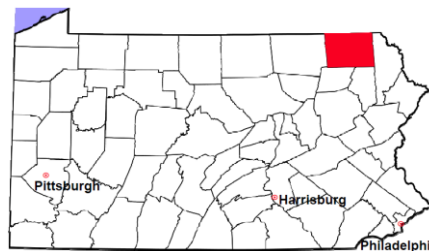
Note: Dependency data for 2002-2010 were collected manually. Dependency data for 2011 and 2012 were provided by CPCMS.

Susquehanna County

2012 Population Estimate: 42,696

Class of County: 6th

No. of Common Pleas Court Judgeships: 1



2012 Juvenile Dependency - Adjudicated Dependent Inventory



	Abuse/ Neglect	Status Offenses	Total
Cases Pending 1/1/2012	46	2	48
New Adjudicated Dependent Cases	9	1	10
Other	0	0	0
Total Adjudicated Dependent Cases	55	3	58

Court Supervision Terminated:

Family Reunification	7	41.2%	0	7	41.2%
Adoption	3	17.6%	0	3	17.6%
Placement with a Relative/Guardian	4	23.5%	0	4	23.5%
Aged Out	2	11.8%	0	2	11.8%
Other Permanency Outcomes*	0		0	0	
Other**	1	5.9%	0	1	5.9%
Total Adjudicated Dependent Cases Terminated	17	100.0%	0	17	100.0%
Cases Pending 12/31/2012	38		3	41	

Data provided by CPCMS

* Other Permanency Outcomes include: adjudicated delinquent, death due to natural causes, death due to negligence, emancipation, permanent living arrangement, and parent has come forward.

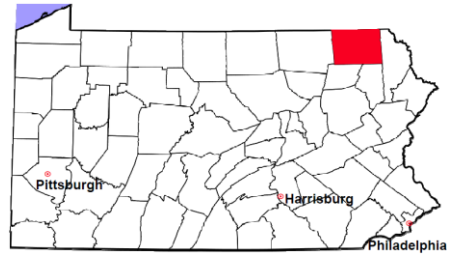
** Other includes cases where court supervision is terminated due to transfer out of jurisdiction, withdrawal and administrative closure.

Susquehanna County

2012 Population Estimate: 42,696

Class of County: 6th

No. of Common Pleas Court Judgeships: 1

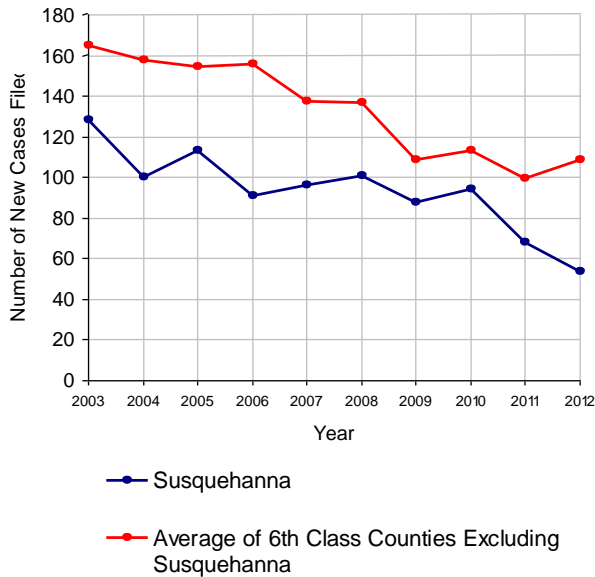


2012 Juvenile Delinquency

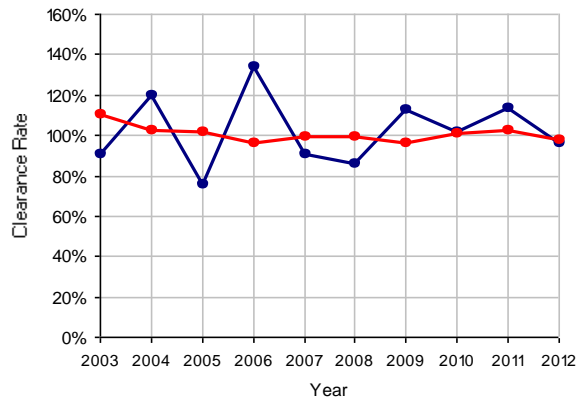
No. of Cases

Cases Pending 1/1/2012	15
New Cases Filed in 2012	54
Cases Available for Processing	69
Processed By:	
Judge	18 34.6%
Non-Judicial Officer	16 30.8%
Other	18 34.6%
Cases Processed	52 100.0%
Cases Pending 12/31/2012	17

Juvenile Delinquency New Cases Filed, 2003-2012

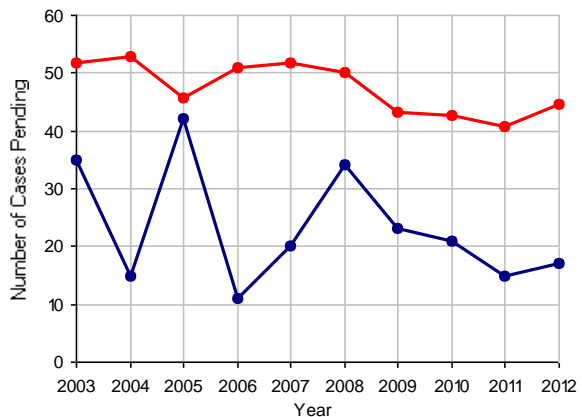


Clearance Rate, 2003-2012



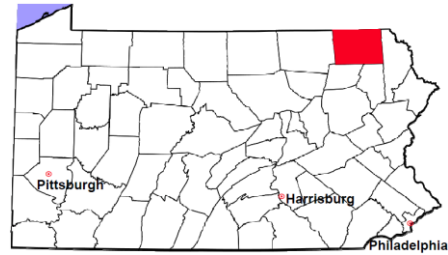
Note: Clearance Rate = Cases Processed / New Cases Filed

Cases Pending at the End of Year, 2003-2012



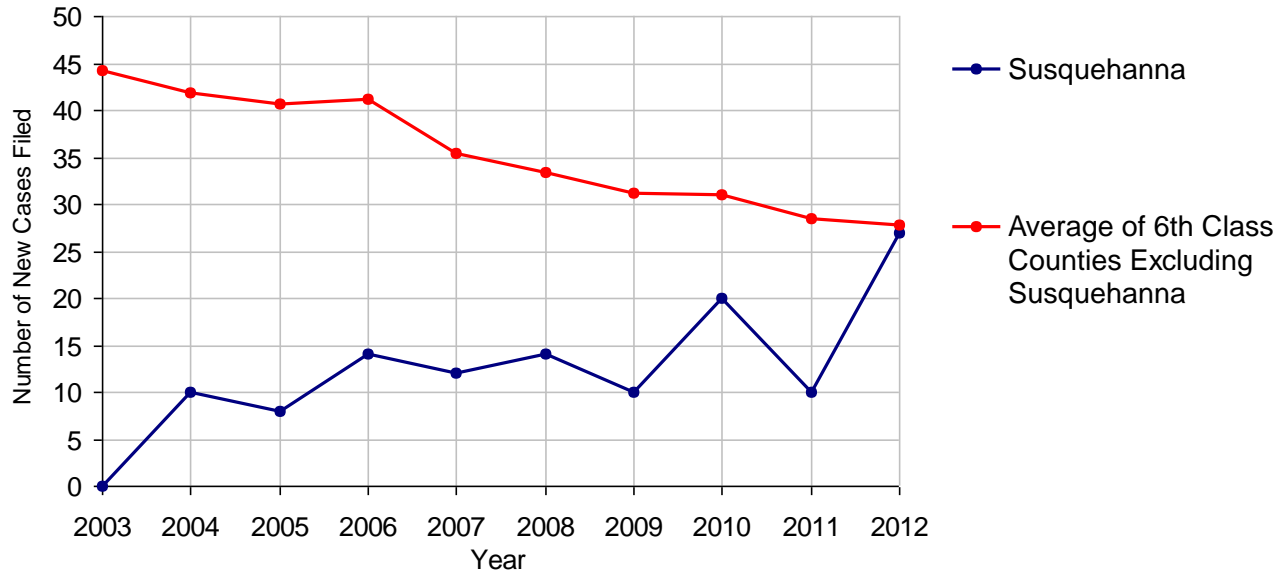
Susquehanna County

2012 Population Estimate: 42,696
 Class of County: 6th
 No. of Common Pleas Court Judgeships: 1



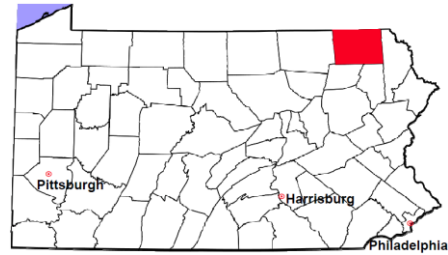
2012 Accounts	No. of Cases	
Cases Pending 1/1/2012	7	
New Cases Filed in 2012	27	
Cases Available for Processing	34	
Processed By:		
Contested before a Judge	3	14.3%
Contested before a Non-judicial Officer	0	
Uncontested	17	81.0%
Other	1	4.8%
Cases Processed	21	100.0%
Cases Pending 12/31/2012	13	

Accounts New Cases Filed, 2003-2012



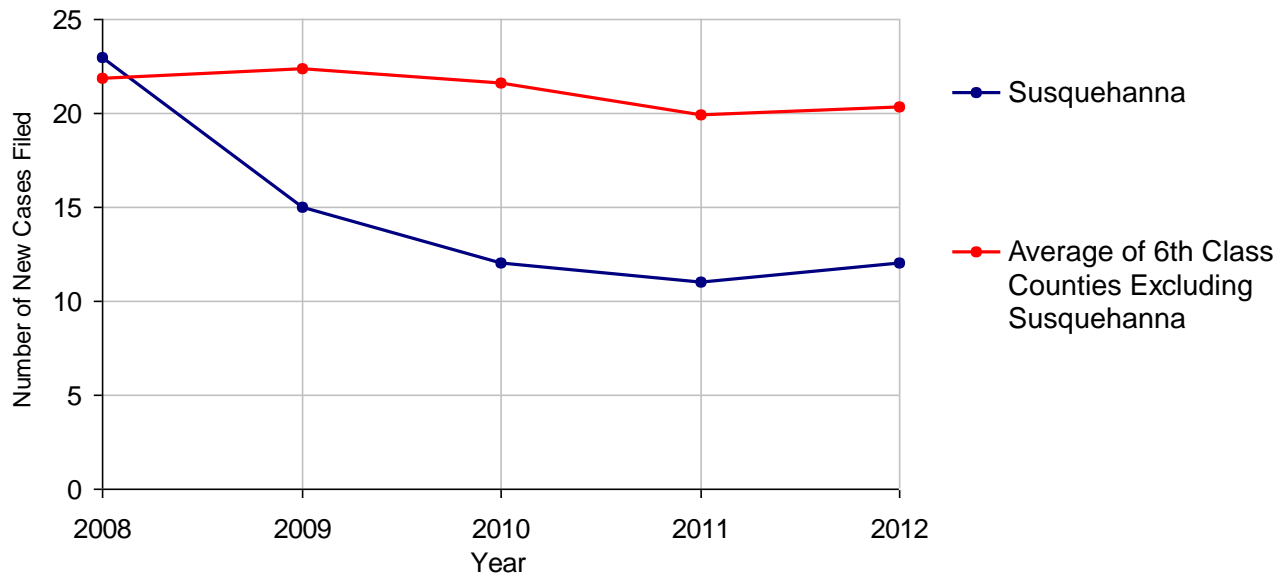
Susquehanna County

2012 Population Estimate: 42,696
 Class of County: 6th
 No. of Common Pleas Court Judgeships: 1



2012 Adoptions		No. of Cases	
Cases Pending 1/1/2012		0	
New Cases Filed in 2012		12	
Cases Available for Processing		12	
Processed By:			
Contested before a Judge	Granted	0	
	Denied	0	
Uncontested	Granted	12	100.0%
	Denied	0	
Other		0	
Cases Processed		12	100.0%
Cases Pending 12/31/2012		0	

Adoptions New Cases Filed, 2008-2012



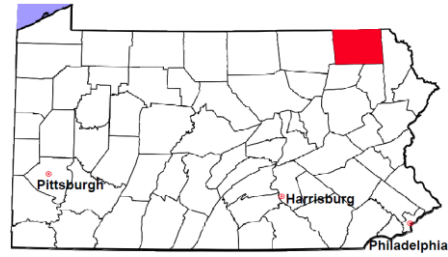
Note: Prior to 2008, each petition was counted as one new case, regardless of the number of children listed on the petition. Starting in 2008, each child listed on a petition is counted as a separate case. Therefore, statistics since 2008 should not be compared to statistics prior to 2008.

Susquehanna County

2012 Population Estimate: 42,696

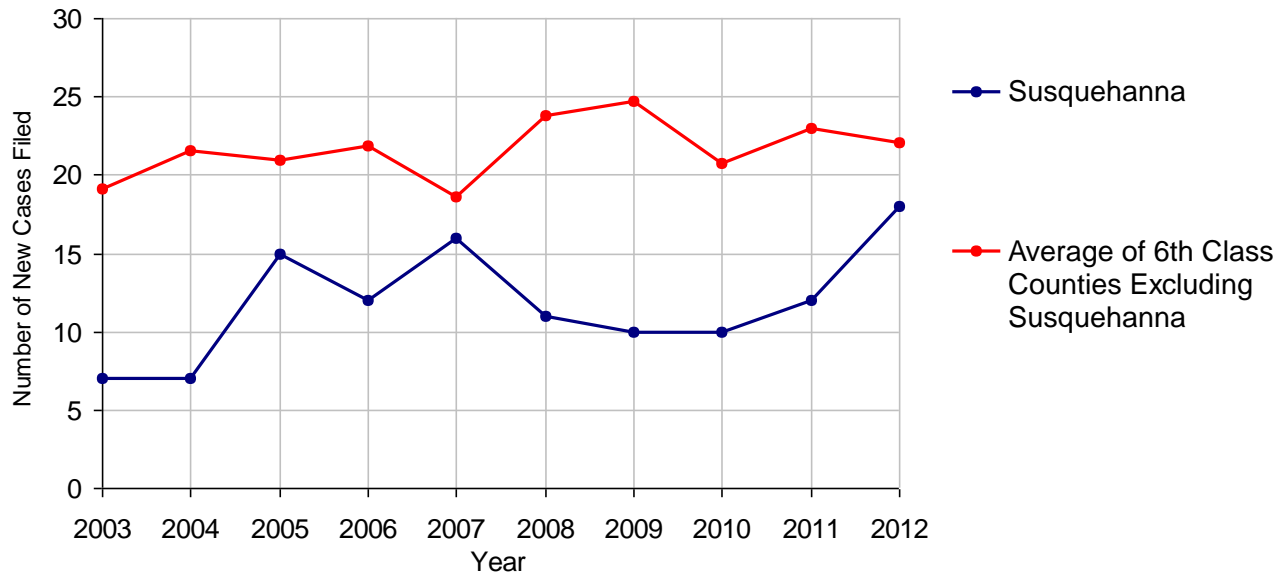
Class of County: 6th

No. of Common Pleas Court Judgeships: 1



2012 Relinquishments/Terminations		No. of Cases
Cases Pending 1/1/2012		12
New Cases Filed in 2012		18
Cases Available for Processing		30
Processed By:		
Contested before a Judge	7	33.3%
Uncontested	14	66.7%
Other	0	
Cases Processed	21	100.0%
Cases Pending 12/31/2012		9

Relinquishments/Terminations New Cases Filed, 2003-2012

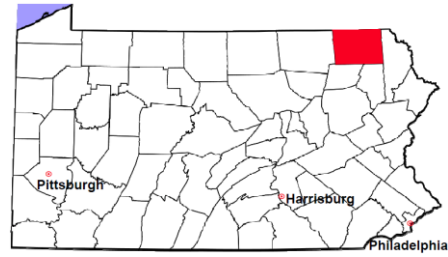


Susquehanna County

2012 Population Estimate: 42,696

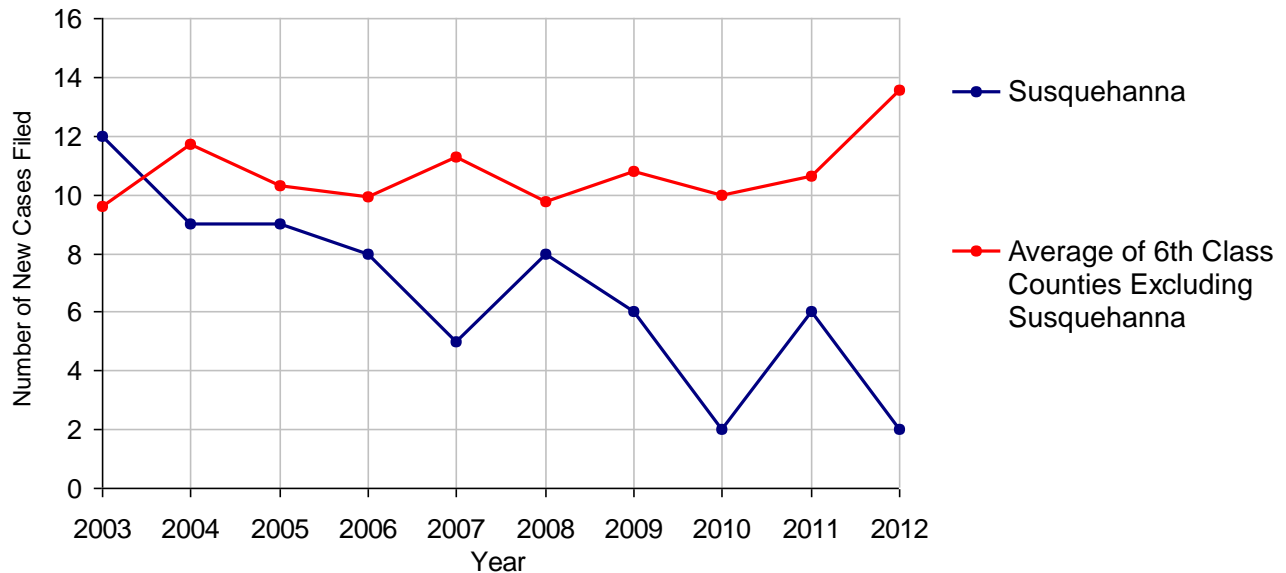
Class of County: 6th

No. of Common Pleas Court Judgeships: 1



2012 Appointment of Guardians		No. of Cases
Cases Pending 1/1/2012		0
New Cases Filed in 2012		2
Cases Available for Processing		2
Processed By:		
Contested before a Judge	1	50.0%
Uncontested	1	50.0%
Other	0	
Cases Processed	2	100.0%
Cases Pending 12/31/2012		0

Appointment of Guardians New Cases Filed, 2003-2012



Susquehanna County

2012 Population Estimate: 42,696

Class of County: 6th

No. of Common Pleas Court Judgeships: 1



2012 Jury Yield and Utilization

Jury Yield

Qualification Questionnaires/Summonses Mailed:	804	A		
Returned Undeliverable:	0	B		
Not Responded to:	7	C	0.9%	Of Qualification Questionnaires/Summonses Mailed
the Number of Prospective Jurors:				
Disqualified:	80	D	10.0%	
Exempted:	46	E	5.7%	
Excused:	79	F	9.8%	
Deferred to New Term:	57	G	7.1%	
Deferred from Previous Term:	76	H	9.5%	
Total Number of Qualified Jurors Available for Service:	611	I	76.0%	

$I = A - B - C - D - E - F - G + H$

Jury Utilization

the Number of Jurors:				
Reporting for Service:	419		68.6%	Of Jurors Qualified and Available
Told Not to Report for Service:	63		10.3%	
Sent to Courtroom for Jury Selection (Voir Dire):	237		56.6%	Of Jurors Reporting for Service
Impanelled or Sworn (jurors/alternates):	56		13.4%	
Removed for Cause/Hardship:	8			
Removed by Peremptory Challenge:	1			

Jury Costs

Total Annual Budget for Juror Operations:	\$38,542.00	J
Average Cost Per Juror:	\$47.94	K

$K = J/A$

In mid-2011, AOPC began utilizing the National Center for State Courts' Jury Managers' Toolbox for collecting jury data. In 2012, the counties began providing additional jury data which included information about the summoning practices in the counties. With this additional data, we can now see not only how many citizens come to our courthouses every day in anticipation of serving on a jury, but the number of citizens actually summonsed and the number of those summonsed who are exempt, excused or disqualified from service. With this wider view of the jury process, we can determine the efficiency with which our courts operate, and with the assistance of the Jury Managers' Toolbox find guidance in streamlining the jury summonsing practices.