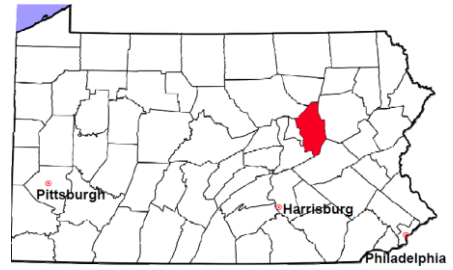


# Columbia County

2012 Population Estimate: 66,887

Class of County: 6th

No. of Common Pleas Court Judgeships: 2  
(Columbia and Montour combined)



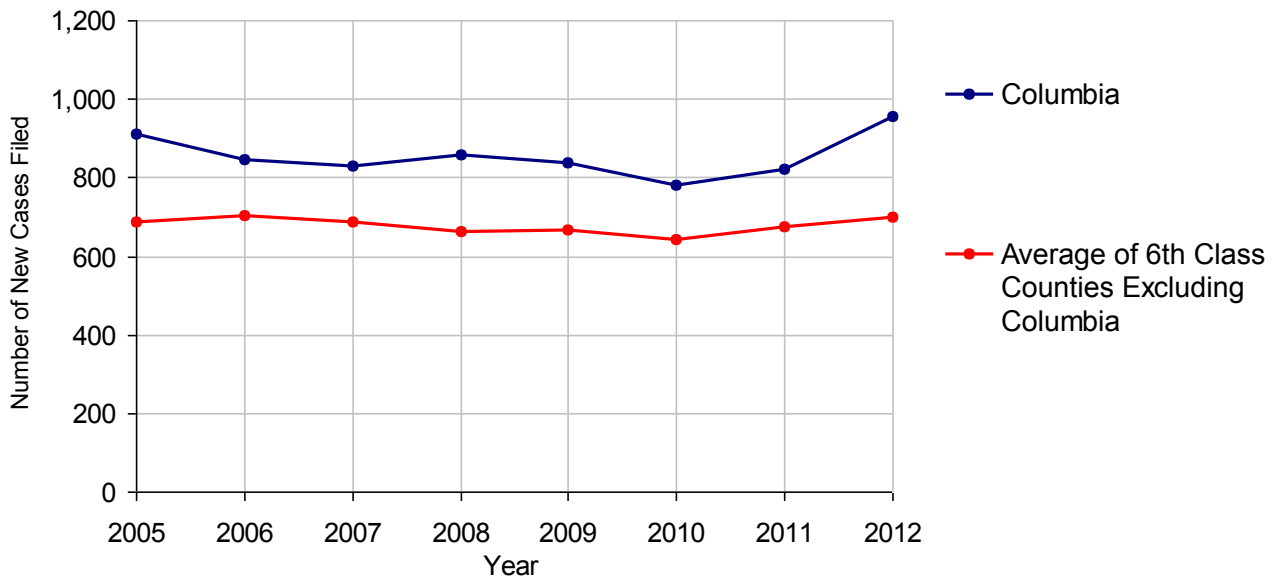
2012 Criminal	No. of Cases
---------------	--------------

Cases Pending 1/1/2012	658
New Cases Filed in 2012	955
Reopened Cases	80
<b>Cases Available for Disposition</b>	<b>1,693</b>
<b>Disposed by:</b>	
Withdrawn/Dismissed	56 6.0%
ARD	187 20.2%
Guilty Plea	572 61.6%
Non-Jury Trial	4 0.4%
Jury Trial	4 0.4%
Inactive	77 8.3%
Other	28 3.0%
<b>Total Cases Disposed</b>	<b>928 100.0%</b>
<b>Cases Pending 12/31/2012</b>	<b>765</b>
Cases Awaiting Sentencing	116

Age of Pending Cases as of 12/31/2012		
0-60 Days	178	23.3%
61-120 Days	118	15.4%
121-180 Days	107	14.0%
181-240 Days	104	13.6%
241-300 Days	70	9.2%
301-360 Days	43	5.6%
Over 360 Days	145	19.0%
<b>Total</b>	<b>765</b>	<b>100.0%</b>

Data provided by CPCMS

**Criminal New Cases Filed, 2005-2012**

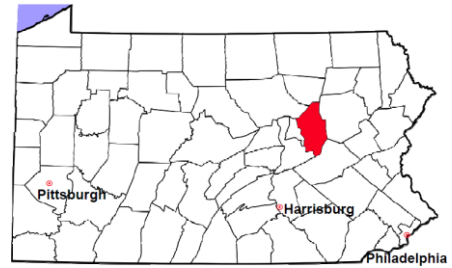


# Columbia County

2012 Population Estimate: 66,887

Class of County: 6th

No. of Common Pleas Court Judgeships: 2  
(Columbia and Montour combined)



## 2012 Criminal - New Cases by Case Type

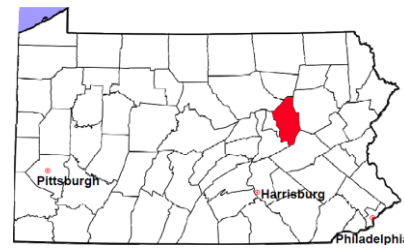


Case Type	Felony	Misdemeanor	Summary /Ungraded	Total
Person	58	30	0	88
Property	134	165	1	300
Drug	139	81	1	221
Weapon	2	4	0	6
Public Order	18	56	0	74
Motor Vehicle - DWI/DUI	0	261	0	261
Motor Vehicle - Other	0	3	1	4
Other	0	1	0	1
<b>Total</b>	<b>351</b>	<b>601</b>	<b>3</b>	<b>955</b>
	<b>36.8%</b>	<b>62.9%</b>	<b>0.3%</b>	<b>100.0%</b>

Data provided by CPCMS

# Columbia County

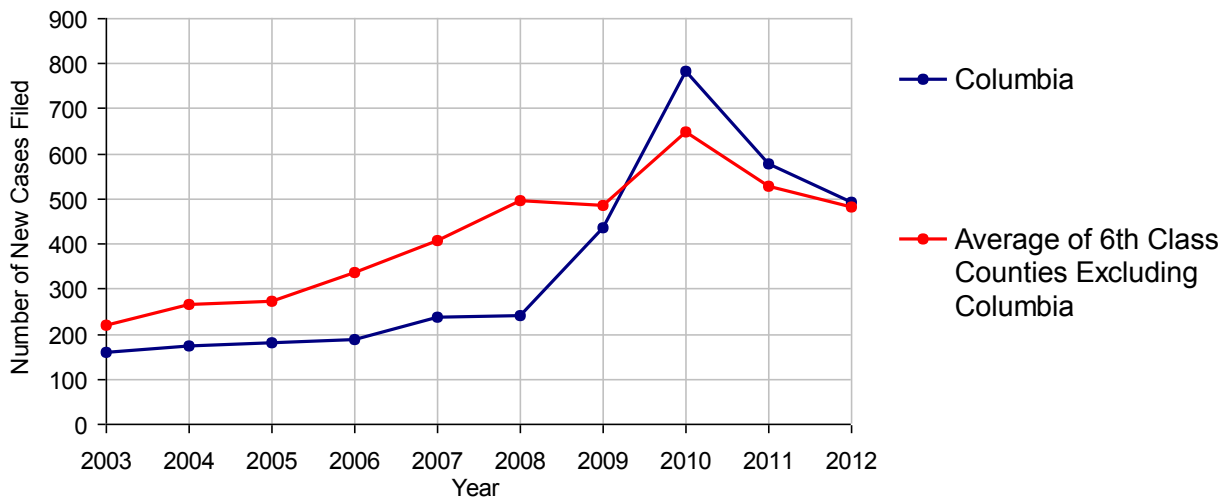
2012 Population Estimate: 66,887  
 Class of County: 6th  
 No. of Common Pleas Court Judgeships: 2  
 (Columbia and Montour combined)



2012 Civil	Civil Action	Other	Total
Cases Pending 1/1/2012	542	1,272	1,814
Docketed Cases	327	167	494
Arbitration Appeals	0	0	0
Transferred In	2	0	2
Returned to Active	0	0	0
<b>Cases Available for Processing</b>	<b>871</b>	<b>1,439</b>	<b>2,310</b>
Disposed By:			
Default Judgments	112	68	180
Cases Decided by Arbitration Board	11	3	14
Dispositive Motions	9	16	25
Settlements	3	0	3
Moved to Inactive Status	0	0	0
Transferred/Withdrawn	113	46	159
Administrative Purge	59	11	70
Other	11	5	16
Jury Trial	0	0	0
Non-Jury Trial	0	0	0
<b>Total Cases Disposed</b>	<b>318</b>	<b>149</b>	<b>467</b>
<b>Cases Pending 12/31/2012</b>	<b>553</b>	<b>1,290</b>	<b>1,843</b>

Age of Pending Cases as of 12/31/2012 (Civil Action Only)		
0-6 months	137	24.8%
7-12 months	90	16.3%
13-18 months	60	10.8%
19-24 months	55	9.9%
25-30 months	49	8.9%
31-36 months	23	4.2%
37-42 months	12	2.2%
43-48 months	22	4.0%
49-54 months	38	6.9%
55-60 months	30	5.4%
61-66 months	7	1.3%
67-72 months	7	1.3%
Over 72 months	23	4.2%
<b>Total</b>	<b>553</b>	<b>100.0%</b>

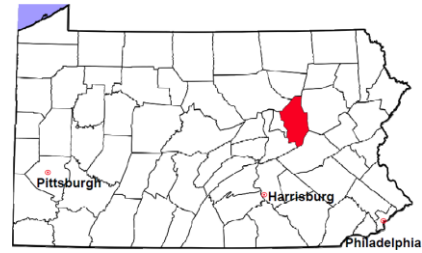
Docketed Cases, 2003-2012



Note: Prior to June 2010, docketed cases under the "Other" category were not reported. The inclusion of these cases starting from June 2010 may contribute to an increase in docketed cases from 2009 to 2010.

# Columbia County

2012 Population Estimate: 66,887  
 Class of County: 6th  
 No. of Common Pleas Court Judgeships: 2  
 (Columbia and Montour combined)



## 2012 Civil - Docketed Cases Listed by Case Type

<b>TORT</b>	<b>74</b>	<b>15.0%</b>
<i>(does not include mass tort)</i>		
Intentional	4	
Malicious Prosecution	0	
Motor Vehicle	39	
Nuisance	0	
Premise Liability	10	
Product Liability	0	
Slander/Libel/Defamation	2	
Other	19	
<b>MASS TORT</b>	<b>1</b>	<b>0.2%</b>
Asbestos	0	
Tobacco	0	
Toxic Tort - DES	0	
Toxic Tort - Implant	0	
Toxic Waste	0	
Other	1	
<b>PROFESSIONAL LIABILITY</b>	<b>5</b>	<b>1.0%</b>
Dental	0	
Legal	0	
Medical Malpractice	4	
Other	1	
<b>CONTRACT</b>	<b>219</b>	<b>44.3%</b>
<i>(does not include judgments)</i>		
Buyer Plaintiff	7	
Debt Collection: Credit Card	119	
Debt Collection: Other	68	
Employment Dispute:		
Employment Dispute: Discriminatio	0	
Employment Dispute: Other	3	
Other	22	

<b>REAL PROPERTY</b>	<b>143</b>	<b>28.9%</b>
Ejectment*	7	
Eminent Domain/Condemnation	3	
Ground Rent	0	
Landlord/Tenant Dispute	28	
Mortgage Foreclosure:		
Residential*	83	
Commercial*	5	
Partition of Real Property*	1	
Quiet Title*	8	
Other*	8	
<b>CIVIL APPEALS</b>	<b>27</b>	<b>5.5%</b>
<i>- Administrative Agencies</i>		
Board of Assessment*	1	
Board of Elections*	9	
Dept. of Transportation*	12	
Zoning Board*	1	
Statutory Appeal - Other*	3	
Other*	1	
<b>MISCELLANEOUS</b>	<b>25</b>	<b>5.1%</b>
Common Law/		
Statutory Arbitration*	1	
Declaratory Judgment*	4	
Mandamus*	0	
Non-Domestic Relations		
Restraining Order*	0	
Quo Warranto*	0	
Replevin*	5	
Other*	15	
<b>TOTAL DOCKETED CASES:</b>	<b>494</b>	<b>100%</b>

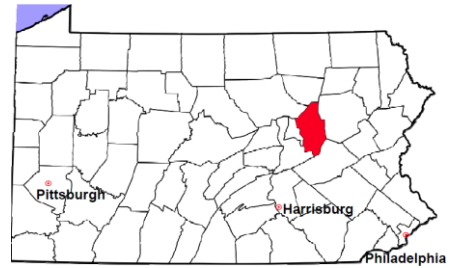
### Of the Docketed Cases:

Pro Se Filings: 22 4.5%      Class Action Suits: 0      MDJ Appeals: 53 10.7%

\* Civil Other

# Columbia County

2012 Population Estimate: 66,887  
 Class of County: 6th  
 No. of Common Pleas Court Judgeships: 2  
 (Columbia and Montour combined)



## 2012 Protection From Abuse

**No. of  
Petitions**

Cases Pending 1/1/2012 36

New Cases Filed in 2012 211

*Of these, Petitions Requesting Temporary Orders: 211 (100.0%)*

*Temporary Orders DENIED: 15 (7.1%), Temporary Orders GRANTED: 196 (92.9%)*

**Cases Available for Processing 247**

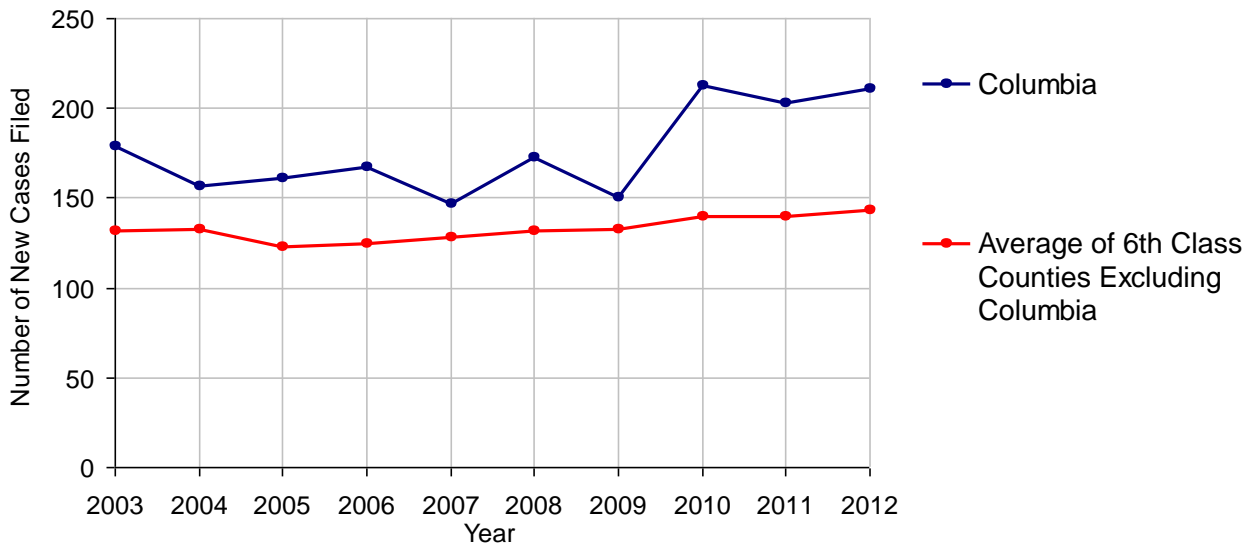
Processed By:

Temporary Order DENIED After Ex Parte Hearing and No Evidentiary Hearing Scheduled	0	
Temporary Order DISMISSED After Evidentiary Hearing and No Final Order Entered	17	8.7%
Final Order DENIED After Evidentiary Hearing Before a Judge	3	1.5%
Final Order GRANTED After Evidentiary Hearing Before a Judge	55	28.1%
Plaintiff Did Not Appear For Evidentiary Hearing	16	8.2%
Final Order by STIPULATION OR AGREEMENT Between the Parties	49	25.0%
Petition WITHDRAWN by Plaintiff	54	27.6%
TRANSFERRED to Another Jurisdiction	1	0.5%
DECEASED Party	0	
Other	1	0.5%

**Cases Processed 196 100.0%**

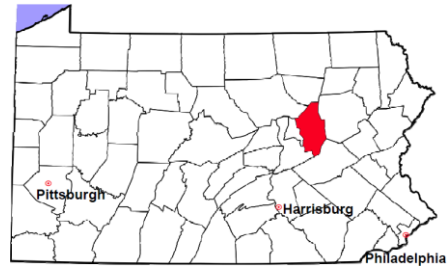
**Cases Pending 12/31/2012 51**

**PFA New Cases Filed, 2003-2012**



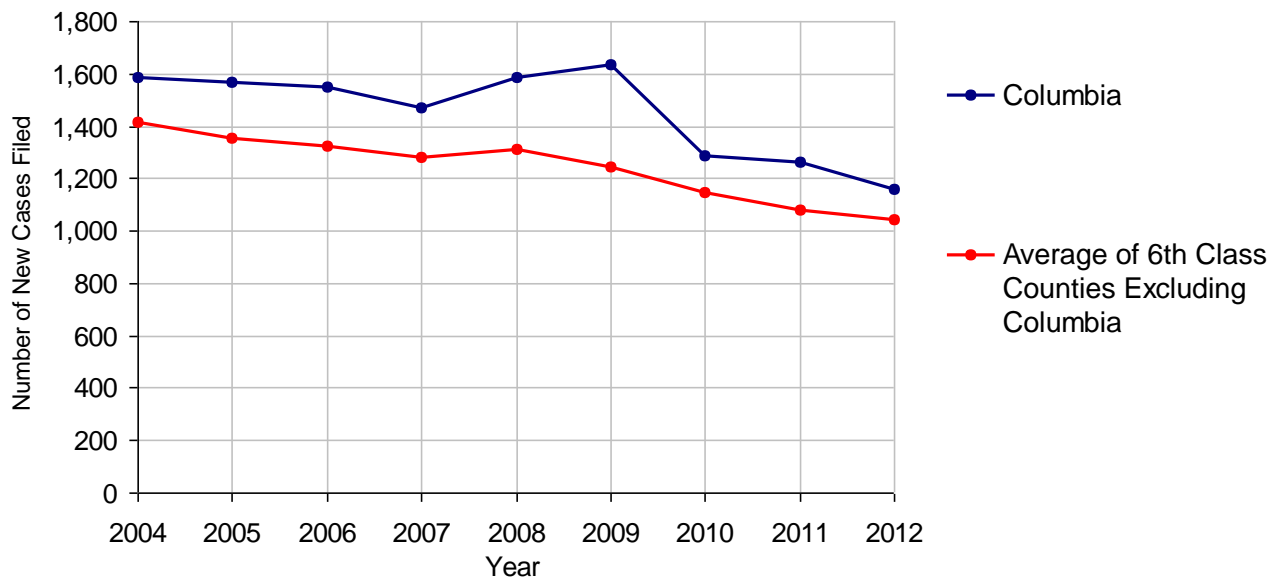
# Columbia County

2012 Population Estimate: 66,887  
 Class of County: 6th  
 No. of Common Pleas Court Judgeships: 2  
 (Columbia and Montour combined)



<b>2012 Spousal &amp; Child Support</b>	<b>No. of Petitions</b>	
Cases Pending 1/1/2012	229	
New Cases Filed in 2012	1,161	
Dockets Transferred In (+)	8	
Dockets Transferred Out (-)	16	
<b>Cases Available for Processing</b>	<b>1,382</b>	
Processed By:		
Judge	22	1.9%
Intake Officer	1,085	92.7%
Hearing Officer	63	5.4%
Other	0	
<b>Cases Processed</b>	<b>1,170</b>	<b>100.0%</b>
<b>Cases Pending 12/31/2012</b>	<b>212</b>	

**Spousal & Child Support New Cases Filed, 2004-2012**

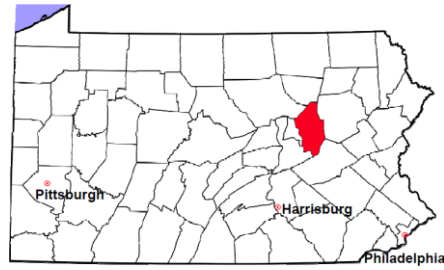


# Columbia County

2012 Population Estimate: 66,887

Class of County: 6th

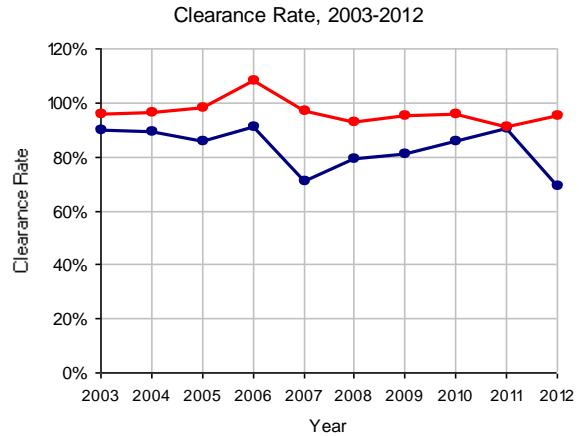
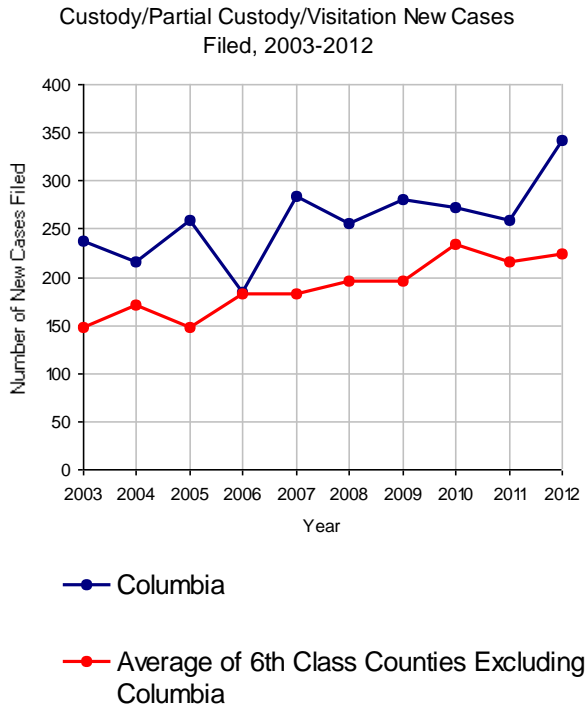
No. of Common Pleas Court Judgeships: 2  
(Columbia and Montour combined)



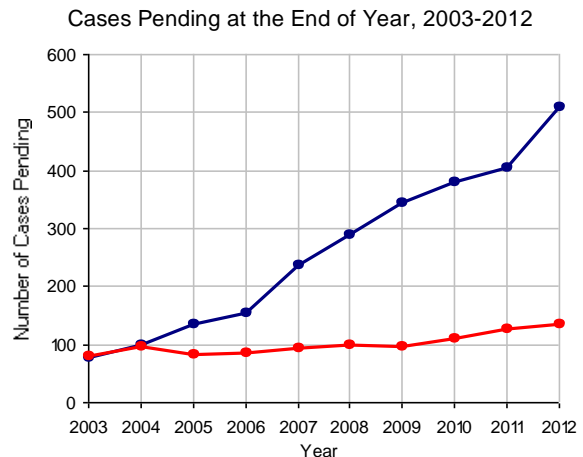
## 2012 Custody/Partial Custody/Visitation

No. of  
Petitions

Cases Pending 1/1/2012	405
New Cases Filed in 2012	342
<b>Cases Available for Processing</b>	<b>747</b>
Processed By:	
Judge	2 0.8%
Non-Judicial Officer	228 96.2%
Other	7 3.0%
<b>Cases Processed</b>	<b>237 100.0%</b>
<b>Cases Pending 12/31/2012</b>	<b>510</b>

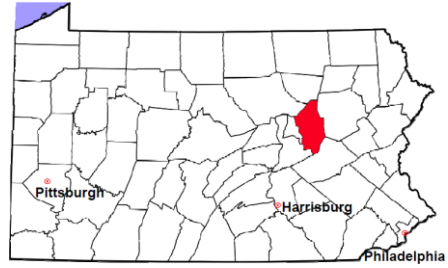


Note: Clearance Rate = Cases Processed / New Cases Filed



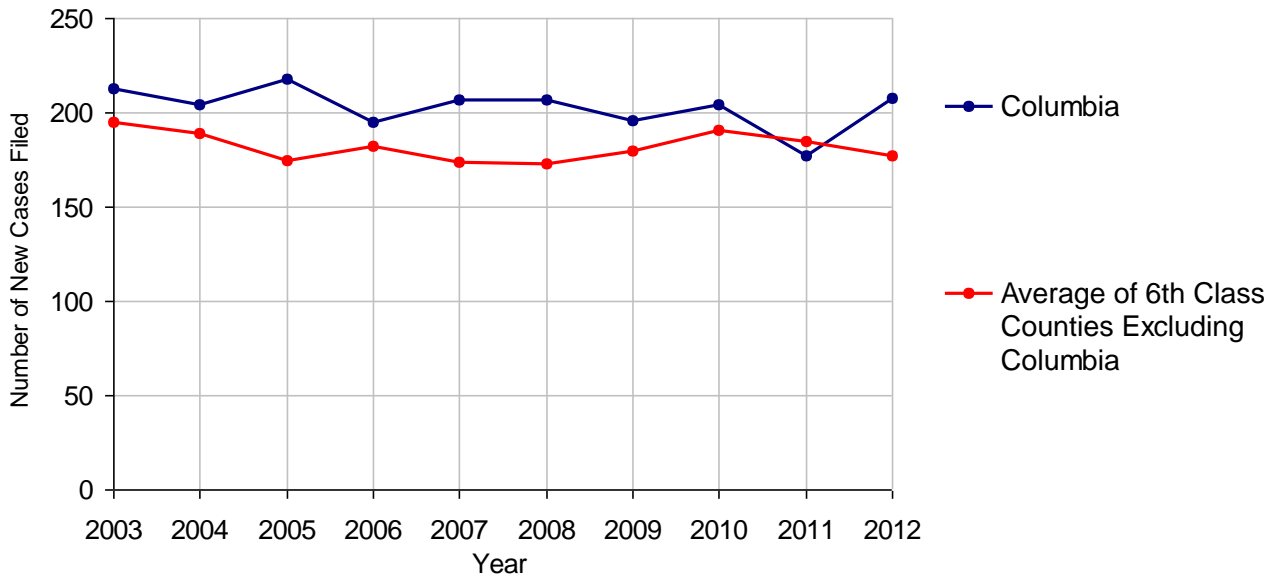
# Columbia County

2012 Population Estimate: 66,887  
 Class of County: 6th  
 No. of Common Pleas Court Judgeships: 2  
 (Columbia and Montour combined)



<b>2012 Divorce</b>	<b>No. of Petitions</b>	
Cases Pending 1/1/2012	458	
New Cases Filed in 2012	208	
<b>Cases Available for Processing</b>	<b>666</b>	
Processed By:		
Contested Before a Judge	0	
Contested Before a Master	16	8.6%
Uncontested	166	88.8%
Other	5	2.7%
<b>Cases Processed</b>	<b>187</b>	<b>100.0%</b>
<b>Cases Pending 12/31/2012</b>	<b>479</b>	

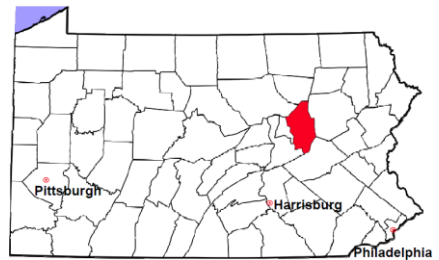
**Divorce New Cases Filed, 2003-2012**





# Columbia County

2012 Population Estimate: 66,887  
 Class of County: 6th  
 No. of Common Pleas Court Judgeships: 2  
 (Columbia and Montour combined)



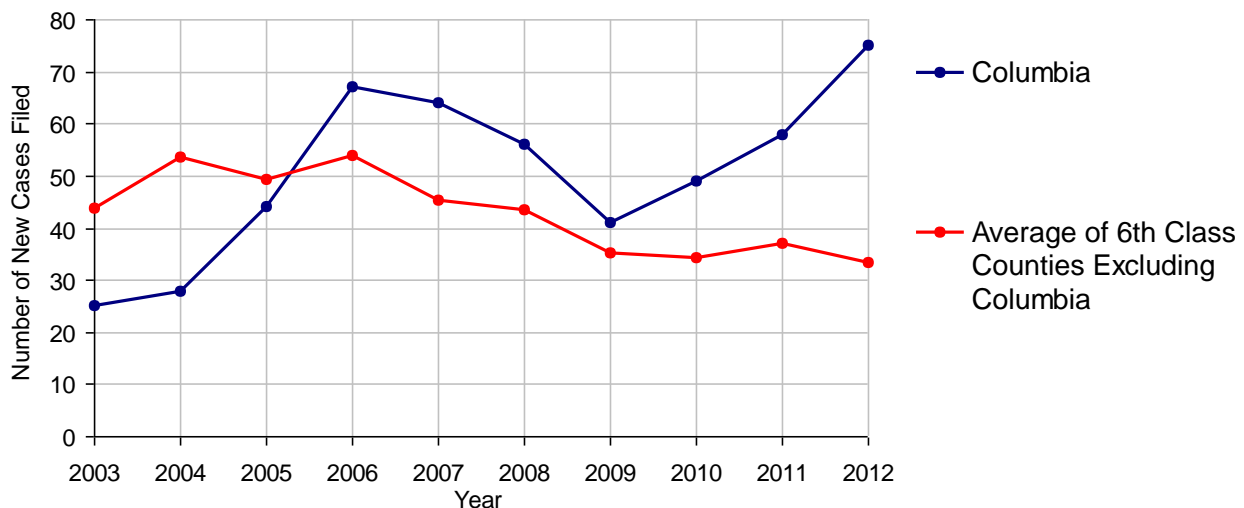
## 2012 Juvenile Dependency - Active Dependent Inventory



	Abuse/ Neglect	Status Offenses	Total
Cases Pending 1/1/2012	34	1	35
New Petitions Filed in 2012	70	5	75
Other	0	0	0
<b>Total Petitions Available for Processing</b>	<b>104</b>	<b>6</b>	<b>110</b>
Processed by:			
Adjudicated Dependent			
Judge	6	0	6
Master	19	2	21
Adjudicated NOT Dependent			
Judge	0	0	0
Master	1	0	1
Withdrawn/Dismissed/Inactive	26	2	28
Other	1	0	1
<b>Total Petitions Processed</b>	<b>53</b>	<b>4</b>	<b>57</b>
<b>Cases Pending 12/31/2012</b>	<b>51</b>	<b>2</b>	<b>53</b>

Data provided by CPCMS

Abuse/Neglect and Status Offenses New Cases Filed, 2003-2012



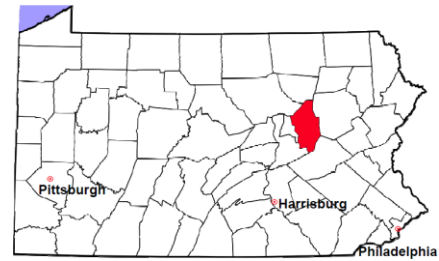
Note: Dependency data for 2002-2010 were collected manually. Dependency data for 2011 and 2012 were provided by CPCMS.

# Columbia County

2012 Population Estimate: 66,887

Class of County: 6th

No. of Common Pleas Court Judgeships: 2  
(Columbia and Montour combined)



## 2012 Juvenile Dependency - Adjudicated Dependent Inventory



	Abuse/ Neglect	Status Offenses	Total
Cases Pending 1/1/2012	163	0	163
New Adjudicated Dependent Cases	25	2	27
Other	1	0	1
<b>Total Adjudicated Dependent Cases</b>	<b>189</b>	<b>2</b>	<b>191</b>
<b><u>Court Supervision Terminated:</u></b>			
Family Reunification	4 30.8%	0	4 28.6%
Adoption	2 15.4%	0	2 14.3%
Placement with a Relative/Guardian	3 23.1%	0	3 21.4%
Aged Out	4 30.8%	0	4 28.6%
Other Permanency Outcomes*	0	0	0
Other**	0	1 100.0%	1 7.1%
<b>Total Adjudicated Dependent Cases Terminated</b>	<b>13 100.0%</b>	<b>1 100.0%</b>	<b>14 100.0%</b>
<b>Cases Pending 12/31/2012</b>	<b>176</b>	<b>1</b>	<b>177</b>

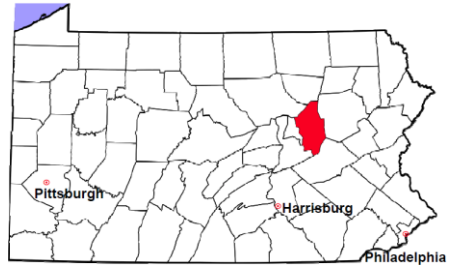
Data provided by CPCMS

\* Other Permanency Outcomes include: adjudicated delinquent, death due to natural causes, death due to negligence, emancipation, permanent living arrangement, and parent has come forward.

\*\* Other includes cases where court supervision is terminated due to transfer out of jurisdiction, withdrawal and administrative closure.

# Columbia County

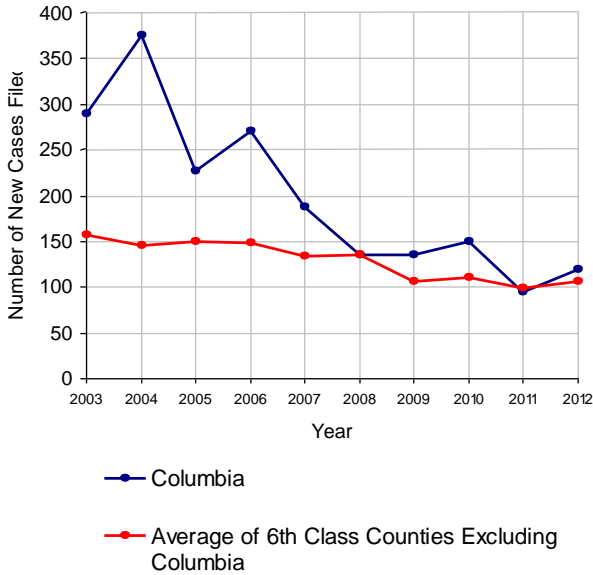
2012 Population Estimate: 66,887  
 Class of County: 6th  
 No. of Common Pleas Court Judgeships: 2  
 (Columbia and Montour combined)



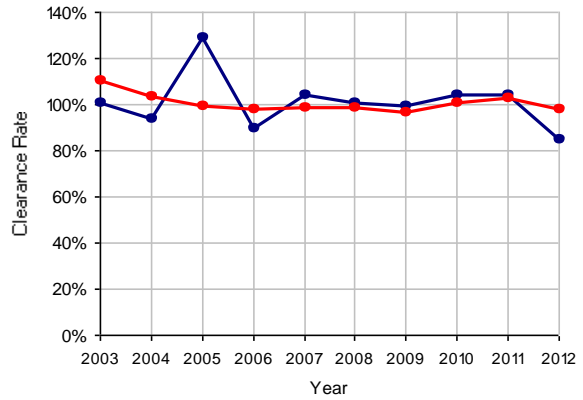
## 2012 Juvenile Delinquency

	No. of Cases
Cases Pending 1/1/2012	17
New Cases Filed in 2012	119
<b>Cases Available for Processing</b>	<b>136</b>
Processed By:	
Judge	75 74.3%
Non-Judicial Officer	18 17.8%
Other	8 7.9%
<b>Cases Processed</b>	<b>101 100.0%</b>
<b>Cases Pending 12/31/2012</b>	<b>35</b>

Juvenile Delinquency New Cases Filed, 2003-2012

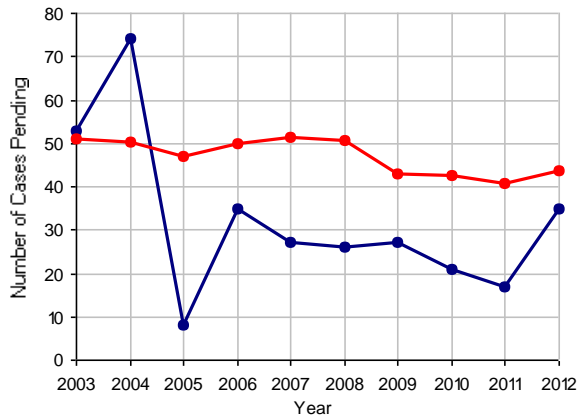


Clearance Rate, 2003-2012



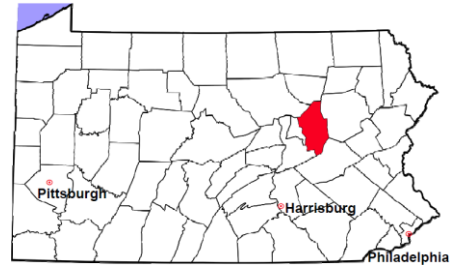
Note: Clearance Rate = Cases Processed / New Cases Filed

Cases Pending at the End of Year, 2003-2012



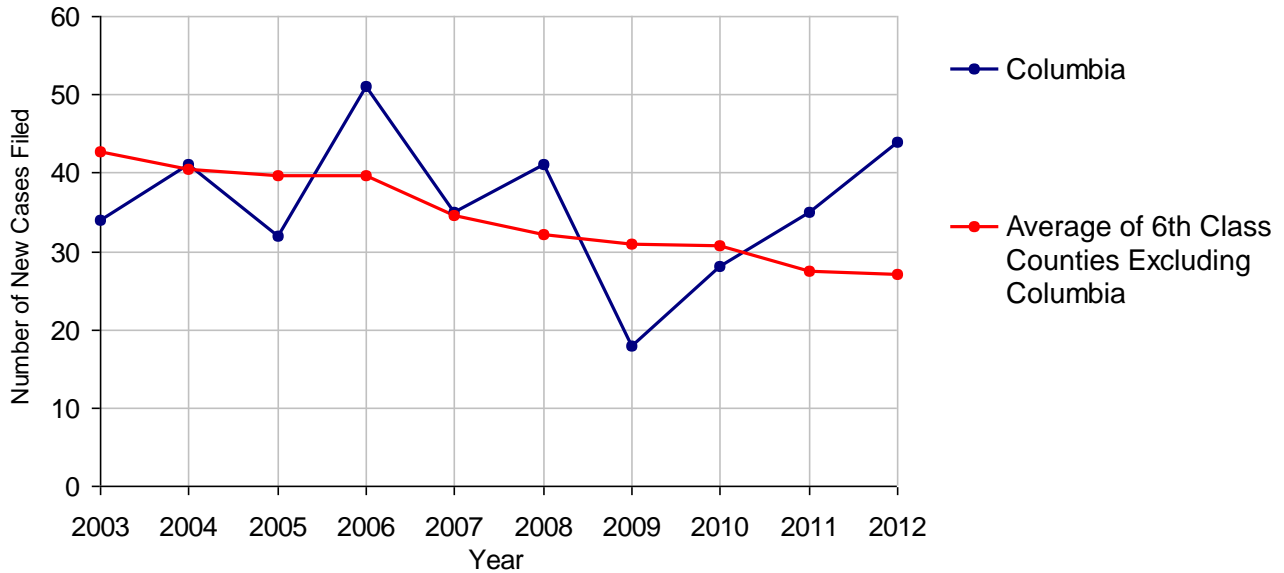
# Columbia County

2012 Population Estimate: 66,887  
 Class of County: 6th  
 No. of Common Pleas Court Judgeships: 2  
 (Columbia and Montour combined)



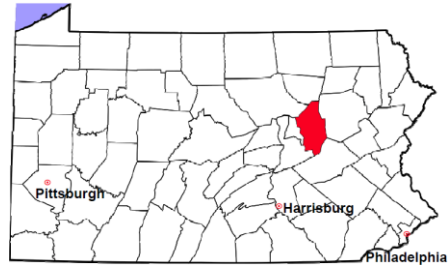
<b>2012 Accounts</b>	<b>No. of Cases</b>	
Cases Pending 1/1/2012	13	
New Cases Filed in 2012	44	
<b>Cases Available for Processing</b>	<b>57</b>	
Processed By:		
Contested before a Judge	0	
Contested before a Non-judicial Officer	1	2.3%
Uncontested	41	93.2%
Other	2	4.5%
<b>Cases Processed</b>	<b>44</b>	<b>100.0%</b>
<b>Cases Pending 12/31/2012</b>	<b>13</b>	

**Accounts New Cases Filed, 2003-2012**



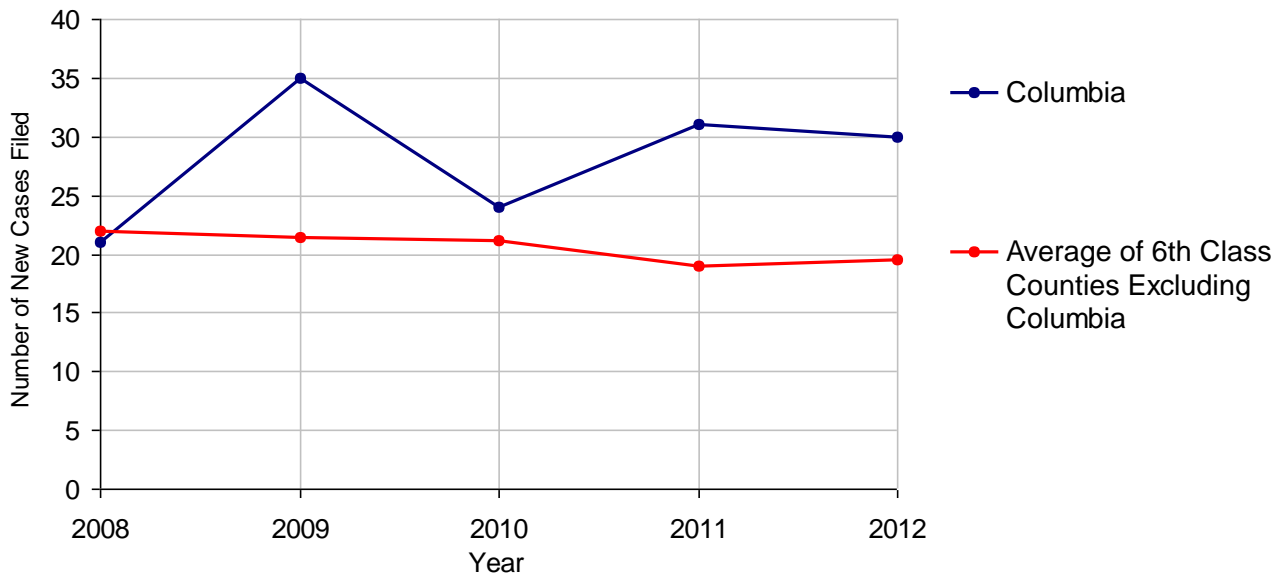
# Columbia County

2012 Population Estimate: 66,887  
 Class of County: 6th  
 No. of Common Pleas Court Judgeships: 2  
 (Columbia and Montour combined)



<b>2012 Adoptions</b>		<b>No. of Cases</b>	
Cases Pending 1/1/2012		4	
New Cases Filed in 2012		30	
<b>Cases Available for Processing</b>		<b>34</b>	
Processed By:			
Contested before a Judge	Granted	0	
	Denied	0	
Uncontested	Granted	28	93.3%
	Denied	0	
Other		2	6.7%
<b>Cases Processed</b>		<b>30</b>	<b>100.0%</b>
<b>Cases Pending 12/31/2012</b>		<b>4</b>	

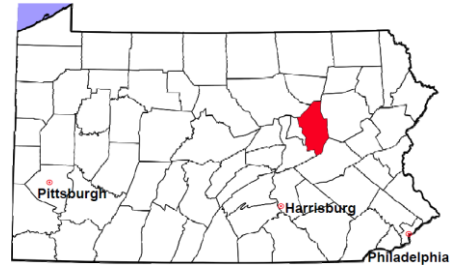
**Adoptions New Cases Filed, 2008-2012**



Note: Prior to 2008, each petition was counted as one new case, regardless of the number of children listed on the petition. Starting in 2008, each child listed on a petition is counted as a separate case. Therefore, statistics since 2008 should not be compared to statistics prior to 2008.

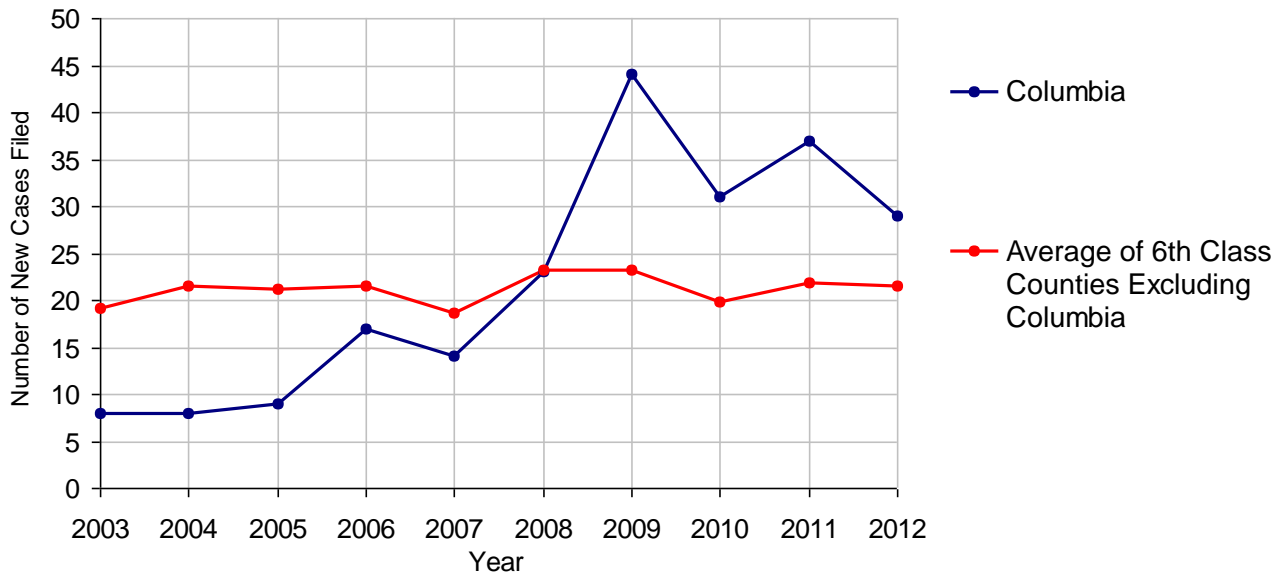
# Columbia County

2012 Population Estimate: 66,887  
 Class of County: 6th  
 No. of Common Pleas Court Judgeships: 2  
 (Columbia and Montour combined)



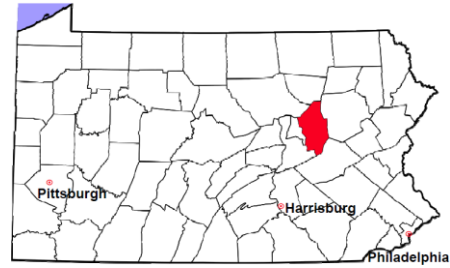
<b>2012 Relinquishments/Terminations</b>	<b>No. of Cases</b>
Cases Pending 1/1/2012	8
New Cases Filed in 2012	29
<b>Cases Available for Processing</b>	<b>37</b>
Processed By:	
Contested before a Judge	1      4.0%
Uncontested	23      92.0%
Other	1      4.0%
<b>Cases Processed</b>	<b>25      100.0%</b>
<b>Cases Pending 12/31/2012</b>	<b>12</b>

**Relinquishments/Terminations New Cases Filed, 2003-2012**



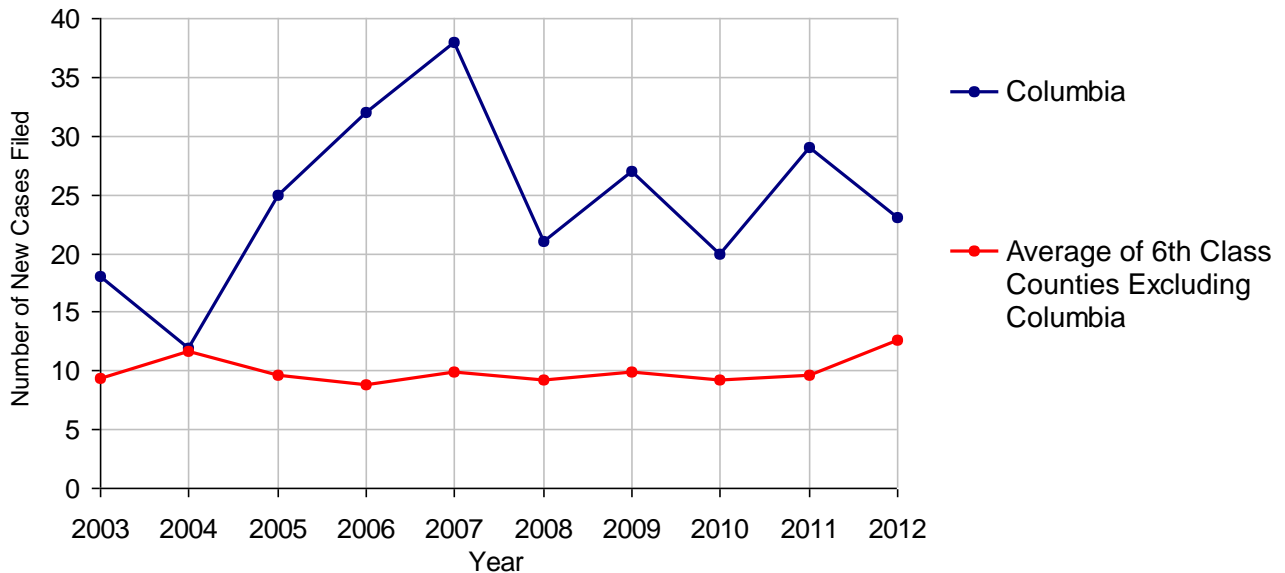
# Columbia County

2012 Population Estimate: 66,887  
 Class of County: 6th  
 No. of Common Pleas Court Judgeships: 2  
 (Columbia and Montour combined)



<b>2012 Appointment of Guardians</b>	<b>No. of Cases</b>
Cases Pending 1/1/2012	6
New Cases Filed in 2012	23
<b>Cases Available for Processing</b>	<b>29</b>
Processed By:	
Contested before a Judge	1    5.3%
Uncontested	16    84.2%
Other	2    10.5%
<b>Cases Processed</b>	<b>19    100.0%</b>
<b>Cases Pending 12/31/2012</b>	<b>10</b>

**Appointment of Guardians New Cases Filed, 2003-2012**



# Columbia County

2012 Population Estimate: 66,887  
 Class of County: 6th  
 No. of Common Pleas Court Judgeships: 2  
 (Columbia and Montour combined)



## 2012 Jury Yield and Utilization

### Jury Yield

Qualification Questionnaires/Summonses Mailed:  A  
 Returned Undeliverable:  B  
 Not Responded to:  C  
 the Number of Prospective Jurors:  
 Disqualified:  D  
 Exempted:  E  
 Excused:  F  
 Deferred to New Term:  G  
 Deferred from Previous Term:  H  
**Total Number of Qualified Jurors Available for Service:  I**  
*I=A-B-C-D-E-F-G+H*

There was no jury selection held in Columbia County in 2012.

### Jury Utilization

the Number of Jurors:  
 Reporting for Service:   
 Told Not to Report for Service:   
 Sent to Courtroom for Jury Selection (Voir Dire):   
 Impanelled or Sworn (jurors/alternates):   
 Removed for Cause/Hardship:   
 Removed by Peremptory Challenge:

### Jury Costs

**Total Annual Budget for Juror Operations:  J**  
**Average Cost Per Juror:  K**  
*K=J/A*

In mid-2011, AOPC began utilizing the National Center for State Courts' Jury Managers' Toolbox for collecting jury data. In 2012, the counties began providing additional jury data which included information about the summoning practices in the counties. With this additional data, we can now see not only how many citizens come to our courthouses every day in anticipation of serving on a jury, but the number of citizens actually summonsed and the number of those summonsed who are exempt, excused or disqualified from service. With this wider view of the jury process, we can determine the efficiency with which our courts operate, and with the assistance of the Jury Managers' Toolbox find guidance in streamlining the jury summoning practices.